

TRACT 40506 - Jefferson and Plaquemines Parishes, Louisiana

All of the lands now or formerly constituting the beds and bottoms of all water bodies of every nature and description as to which title is vested in the State of Louisiana, together with all islands arising therein and other lands formed by accretion or by reliction, where allowed by law, excepting tax adjudicated lands, and not presently under mineral lease on November 12, 2008, situated in Jefferson and Plaquemines Parishes, Louisiana, and more particularly described as follows: Beginning at a point having Coordinates of X = 2,432,700.00 and Y = 301,303.64; thence South 5,603.64 feet to a point having Coordinates of X = 2,432,700.00 and Y = 295,700.00; thence West 5,432.00 feet to a point on the East boundary of State Lease No. 19379 having Coordinates of X = 2,427,268.00 and Y = 295,700.00; thence North 5,603.64 feet along the East boundary of said State Lease No. 19379 to its Northeast corner having Coordinates of X = 2,427,268.00 and Y = 301,303.64; thence East 5,432.00 feet to the point of beginning, (This tract includes only waterbottoms claimed and owned by the state and specifically excludes any land which the state may claim or own and to which the mineral rights are vested in the state), containing approximately **500 acres**, all as more particularly outlined on a plat on file in the Office of Mineral Resources, Department of Natural Resources. All bearings, distances and coordinates are based on Louisiana Coordinate System of 1927, (North or South Zone), where applicable.

NOTE: The above description of the Tract nominated for lease has been provided and corrected, where required, exclusively by the nomination party. Any mineral lease selected from this Tract and awarded by the Louisiana State Mineral Board shall be without warranty of any kind, either express, implied, or statutory, including, but not limited to, the implied warranties of merchantability and fitness for a particular purpose. Should the mineral lease awarded by the Louisiana State Mineral Board be subsequently modified, cancelled or abrogated due to the existence of conflicting leases, operating agreements, private claims or other future obligations or conditions which may affect all or any portion of the leased Tract, it shall not relieve the Lessee of the obligation to pay any bonus due thereon to the Louisiana State Mineral Board, nor shall the Louisiana State Mineral Board be obligated to refund any consideration paid by the Lessor prior to such modification, cancellation, or abrogation, including, but not limited to, bonuses, rentals and royalties.

NOTE: The State of Louisiana does hereby reserve, and this lease shall be subject to, the imprescriptible right of surface use in the nature of a servitude in favor of the Department of Natural Resources, including its Offices and Commissions, for the sole purpose of implementing, constructing, servicing and maintaining approved coastal zone management and/or restoration projects. Utilization of any and all rights derived under this lease by the mineral lessee, its agents, successors or assigns, shall not interfere with nor hinder the reasonable surface use by the Department of Natural Resources, its Offices or Commissions, as herein above reserved.

NOTE: The Department of Wildlife and Fisheries has designated certain areas in the coastal waters of the State of Louisiana as Oyster Seed Bed Areas. The exact location of those Seed Bed Areas must be obtained from the Department of Wildlife and Fisheries and any work done under a mineral lease from the State of Louisiana may necessarily be conducted in conformity with the rules and regulations promulgated by the said Department of Wildlife and Fisheries for Oyster Seed Bed Areas.

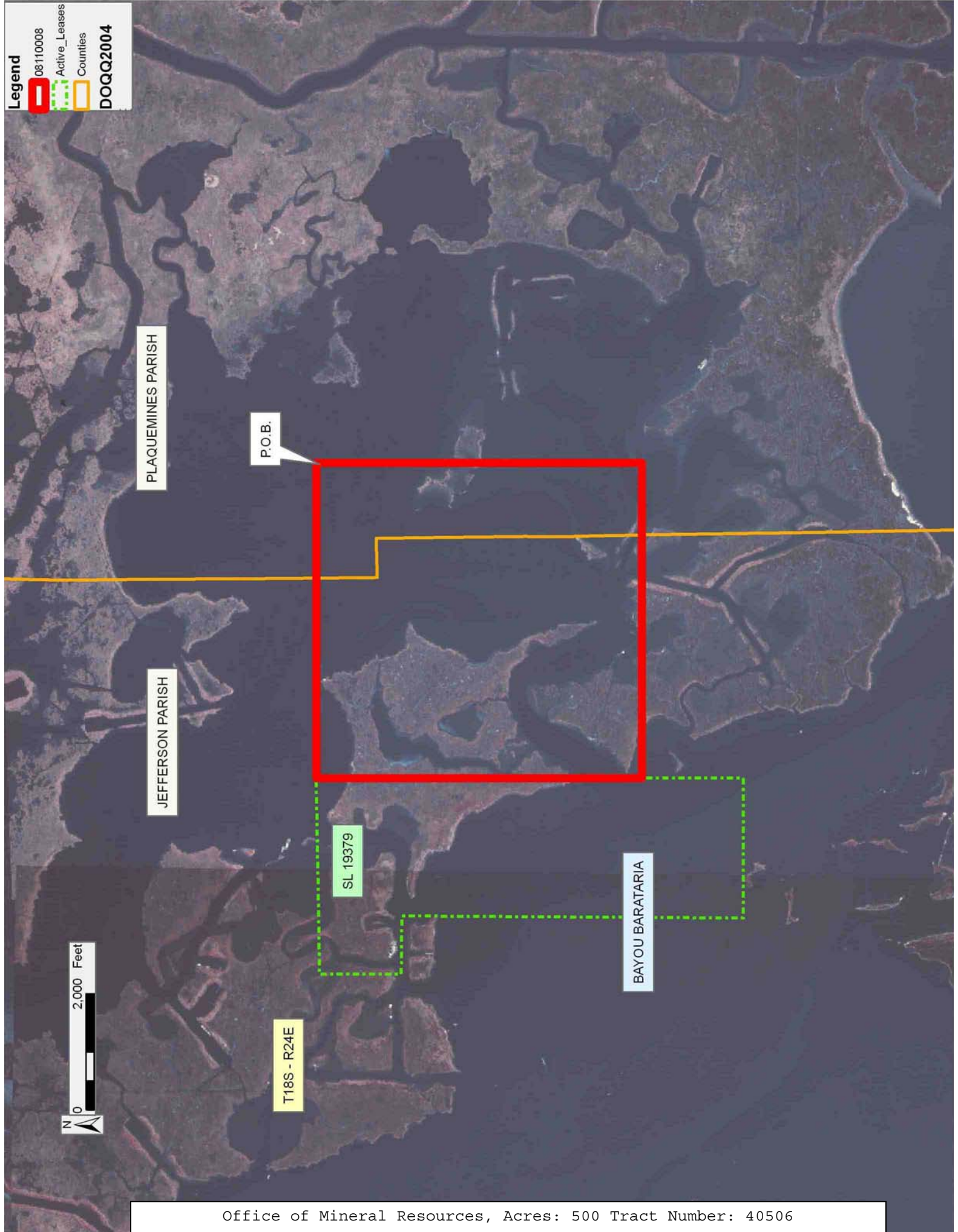
Applicant: HAMMERDRILL EXPLORATION COMPANY

Bidder	Cash Payment	Price/Acre	Rental	Oil	Gas	Other

Legend

- 08110008
- Active_Leases
- Counties

DOQQ2004



PLAQUEMINES PARISH

P.O.B.

JEFFERSON PARISH

SL 19379

BAYOU BARATARIA

T18S - R24E



TRACT 40507 - Plaquemines Parish, Louisiana

All of the lands now or formerly constituting the beds and bottoms of all water bodies of every nature and description as to which title is vested in the State of Louisiana, together with all islands arising therein and other lands formed by accretion or by reliction, where allowed by law, excepting tax adjudicated lands, and not presently under mineral lease on November 12, 2008, situated in Plaquemines Parish, Louisiana, and more particularly described as follows: Beginning at a point having Coordinates of X = 2,572,074.60 and Y = 261,506.24; thence South 51 degrees 53 minutes 15 seconds East 4,522.30 feet to a point having Coordinates of X = 2,575,632.75 and Y = 258,715.04; thence South 33 degrees 02 minutes 11 seconds West 5,685.93 feet to the Northwest corner of State Lease No. 19250 having Coordinates of X = 2,572,532.93 and Y = 253,948.39; thence South 36 degrees 21 minutes 57 seconds West 5,277.49 feet along the Western boundary of said State Lease No. 19250 to its Southwest corner having Coordinates of X = 2,569,403.70 and Y = 249,698.71; thence North 54 degrees 55 minutes 09 seconds West 4,390.12 feet to a point having Coordinates of X = 2,565,811.08 and Y = 252,221.84; thence North 34 degrees 00 minutes 17 seconds East 11,199.63 feet to the point of beginning, (This tract includes only waterbottoms claimed and owned by the state and specifically excludes any land which the state may claim or own and to which the mineral rights are vested in the state), containing approximately **629 acres**, all as more particularly outlined on a plat on file in the Office of Mineral Resources, Department of Natural Resources. All bearings, distances and coordinates are based on Louisiana Coordinate System of 1927, (North or South Zone), where applicable.

NOTE: The above description of the Tract nominated for lease has been provided and corrected, where required, exclusively by the nomination party. Any mineral lease selected from this Tract and awarded by the Louisiana State Mineral Board shall be without warranty of any kind, either express, implied, or statutory, including, but not limited to, the implied warranties of merchantability and fitness for a particular purpose. Should the mineral lease awarded by the Louisiana State Mineral Board be subsequently modified, cancelled or abrogated due to the existence of conflicting leases, operating agreements, private claims or other future obligations or conditions which may affect all or any portion of the leased Tract, it shall not relieve the Lessee of the obligation to pay any bonus due thereon to the Louisiana State Mineral Board, nor shall the Louisiana State Mineral Board be obligated to refund any consideration paid by the Lessor prior to such modification, cancellation, or abrogation, including, but not limited to, bonuses, rentals and royalties.

NOTE: The State of Louisiana does hereby reserve, and this lease shall be subject to, the imprescriptible right of surface use in the nature of a servitude in favor of the Department of Natural Resources, including its Offices and Commissions, for the sole purpose of implementing, constructing, servicing and maintaining approved coastal zone management and/or restoration projects. Utilization of any and all rights derived

under this lease by the mineral lessee, its agents, successors or assigns, shall not interfere with nor hinder the reasonable surface use by the Department of Natural Resources, its Offices or Commissions, as herein above reserved.

NOTE: The Department of Wildlife and Fisheries has designated certain areas in the coastal waters of the State of Louisiana as Oyster Seed Bed Areas. The exact location of those Seed Bed Areas must be obtained from the Department of Wildlife and Fisheries and any work done under a mineral lease from the State of Louisiana may necessarily be conducted in conformity with the rules and regulations promulgated by the said Department of Wildlife and Fisheries for Oyster Seed Bed Areas.

Applicant: CYPRESS ENERGY CORPORATION

Bidder	Cash Payment	Price/Acre	Rental	Oil	Gas	Other

Legend
08110142
Active_Leases
DOQQ2004

PLAQUEMINES PARISH

T19S - R17E

P.O.B.

MISSISSIPPI RIVER

SL 19250

T20S - R29E

BAY POMME D'OR



TRACT 40508 - Plaquemines Parish, Louisiana

All of the lands now or formerly constituting the beds and bottoms of all water bodies of every nature and description as to which title is vested in the State of Louisiana, together with all islands arising therein and other lands formed by accretion or by reliction, where allowed by law, excepting tax adjudicated lands, and not presently under mineral lease on November 12, 2008, situated in Plaquemines Parish, Louisiana, and more particularly described as follows: Beginning at a point having Coordinates of X = 2,576,925.72 and Y = 260,703.27; thence South 58 degrees 01 minutes 45 seconds East 3,972.30 feet to a point having Coordinates of X = 2,580,295.50 and Y = 258,600.00; thence South 30 degrees 45 minutes 16 seconds West 8,326.87 feet to the Northeast corner of State Lease No. 19250 having Coordinates of X = 2,576,037.46 and Y = 251,444.18; thence North 54 degrees 27 minutes 06 seconds West 4,307.29 feet along the Northern boundary of said State Lease No. 19250 to its Northwest corner having Coordinates of X = 2,572,532.93 and Y = 253,948.39; thence North 33 degrees 02 minutes 11 seconds East 8,057.61 feet to the point of beginning, containing approximately **248 acres**, all as more particularly outlined on a plat on file in the Office of Mineral Resources, Department of Natural Resources. All bearings, distances and coordinates are based on Louisiana Coordinate System of 1927, (North or South Zone), where applicable.

NOTE: The above description of the Tract nominated for lease has been provided and corrected, where required, exclusively by the nomination party. Any mineral lease selected from this Tract and awarded by the Louisiana State Mineral Board shall be without warranty of any kind, either express, implied, or statutory, including, but not limited to, the implied warranties of merchantability and fitness for a particular purpose. Should the mineral lease awarded by the Louisiana State Mineral Board be subsequently modified, cancelled or abrogated due to the existence of conflicting leases, operating agreements, private claims or other future obligations or conditions which may affect all or any portion of the leased Tract, it shall not relieve the Lessee of the obligation to pay any bonus due thereon to the Louisiana State Mineral Board, nor shall the Louisiana State Mineral Board be obligated to refund any consideration paid by the Lessor prior to such modification, cancellation, or abrogation, including, but not limited to, bonuses, rentals and royalties.

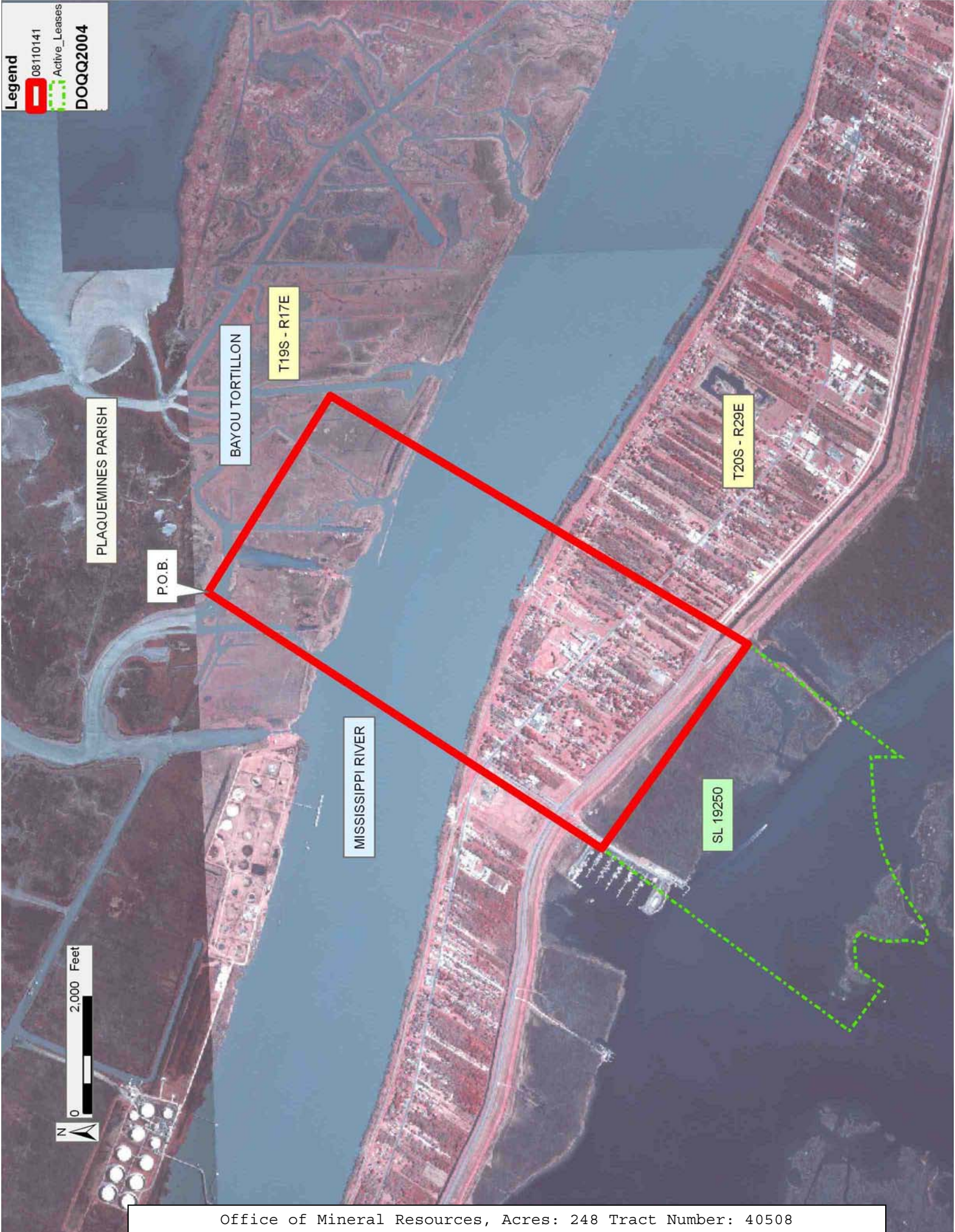
NOTE: The State of Louisiana does hereby reserve, and this lease shall be subject to, the imprescriptible right of surface use in the nature of a servitude in favor of the Department of Natural Resources, including its Offices and Commissions, for the sole purpose of implementing, constructing, servicing and maintaining approved coastal zone management and/or restoration projects. Utilization of any and all rights derived under this lease by the mineral lessee, its agents, successors or assigns, shall not interfere with nor hinder the reasonable surface use by the Department of Natural Resources, its Offices or Commissions, as herein above reserved.

NOTE: The Department of Wildlife and Fisheries has designated certain areas in the coastal waters of the State of Louisiana as Oyster Seed Bed Areas. The exact location of those Seed Bed Areas must be obtained from the Department of Wildlife and Fisheries and any work done under a mineral lease from the State of Louisiana may necessarily be conducted in conformity with the rules and regulations promulgated by the said Department of Wildlife and Fisheries for Oyster Seed Bed Areas.

Applicant: CYPRESS ENERGY CORPORATION

Bidder	Cash Payment	Price/Acre	Rental	Oil	Gas	Other

Legend
08110141
Active_Leases
DOQQ2004



TRACT 40509 - Plaquemines Parish, Louisiana

All of the lands now or formerly constituting the beds and bottoms of all water bodies of every nature and description as to which title is vested in the State of Louisiana, together with all islands arising therein and other lands formed by accretion or by reliction, where allowed by law, excepting tax adjudicated lands, and not presently under mineral lease on November 12, 2008, situated in Plaquemines Parish, Louisiana, and more particularly described as follows: Beginning at a point having Coordinates of X = 2,580,295.50 and Y = 258,600.00; thence South 59 degrees 28 minutes 12 seconds East 3,401.90 feet to a point having Coordinates of X = 2,583,225.77 and Y = 256,871.87; thence South 30 degrees 42 minutes 28 seconds West 13,532.36 feet to a point having Coordinates of X = 2,576,315.31 and Y = 245,237.00; thence West approximately 4,480 feet to a point on the East boundary of State Lease No. 192, as amended, having a Coordinate of Y = 245,237.00; thence along the meanders of the boundary of said State Lease No. 192 the following: Northerly, Northwesterly, Northerly, Easterly and Northerly to a point of intersection with State Lease No. 19250; thence along the boundary of said State Lease No. 19250 the following courses: South 51 degrees 03 minutes 38 seconds East approximately 5 feet; South 70 degrees 34 minutes 43 seconds East 169.43 feet; North 72 degrees 26 minutes 15 seconds East 132.98 feet; North 60 degrees 34 minutes 57 seconds East 162.87 feet; North 55 degrees 33 minutes 46 seconds East 441.47 feet; North 59 degrees 53 minutes 35 seconds East 433.10 feet and North 65 degrees 46 minutes 16 seconds East 300.35 feet to the Northwest corner of Tract 4 of AO 0220 having Coordinates of X = 2,572,333.11 and Y = 249,063.21; thence South 60 degrees 13 minutes 40 seconds East 522.32 feet along the West boundary of said AO 0220 to a point of intersection with State Lease No. 13566; thence South 60 degrees 13 minutes 45 seconds East approximately 881 feet along the boundary of said State Lease No. 13566 to its Southernmost corner; thence Southeasterly approximately 633 feet on a straight line to a point having Coordinates of X = 2,574,097.65 and Y = 248,053.83; thence North 760.45 feet to a point on the boundary of said State Lease No. 19250 having Coordinates of X = 2,574,097.65 and Y = 248,814.28; thence North 36 degrees 24 minutes 45 seconds East 3,267.90 feet along the Eastern boundary of said State Lease No. 19250 to its Northeast corner having Coordinates of X = 2,576,037.46 and Y = 251,444.18; thence North 30 degrees 45 minutes 16 seconds East 8,326.87 feet to the point of beginning, **LESS AND EXCEPT** that portion, if any, of Operating Agreement No. A0220, as amended, State Lease No. 192, as amended, State Lease No. 13566, as amended, and State Lease No. 19250 which may lie within the above described tract, containing approximately **559 acres**, all as more particularly outlined on a plat on file in the Office of Mineral Resources, Department of Natural Resources. All bearings, distances and coordinates are based on Louisiana Coordinate System of 1927, (North or South Zone), where applicable.

NOTE: The above description of the Tract nominated for lease has been provided and corrected, where required, exclusively by the nomination

party. Any mineral lease selected from this Tract and awarded by the Louisiana State Mineral Board shall be without warranty of any kind, either express, implied, or statutory, including, but not limited to, the implied warranties of merchantability and fitness for a particular purpose. Should the mineral lease awarded by the Louisiana State Mineral Board be subsequently modified, cancelled or abrogated due to the existence of conflicting leases, operating agreements, private claims or other future obligations or conditions which may affect all or any portion of the leased Tract, it shall not relieve the Lessee of the obligation to pay any bonus due thereon to the Louisiana State Mineral Board, nor shall the Louisiana State Mineral Board be obligated to refund any consideration paid by the Lessor prior to such modification, cancellation, or abrogation, including, but not limited to, bonuses, rentals and royalties.

NOTE: The State of Louisiana does hereby reserve, and this lease shall be subject to, the imprescriptible right of surface use in the nature of a servitude in favor of the Department of Natural Resources, including its Offices and Commissions, for the sole purpose of implementing, constructing, servicing and maintaining approved coastal zone management and/or restoration projects. Utilization of any and all rights derived under this lease by the mineral lessee, its agents, successors or assigns, shall not interfere with nor hinder the reasonable surface use by the Department of Natural Resources, its Offices or Commissions, as herein above reserved.

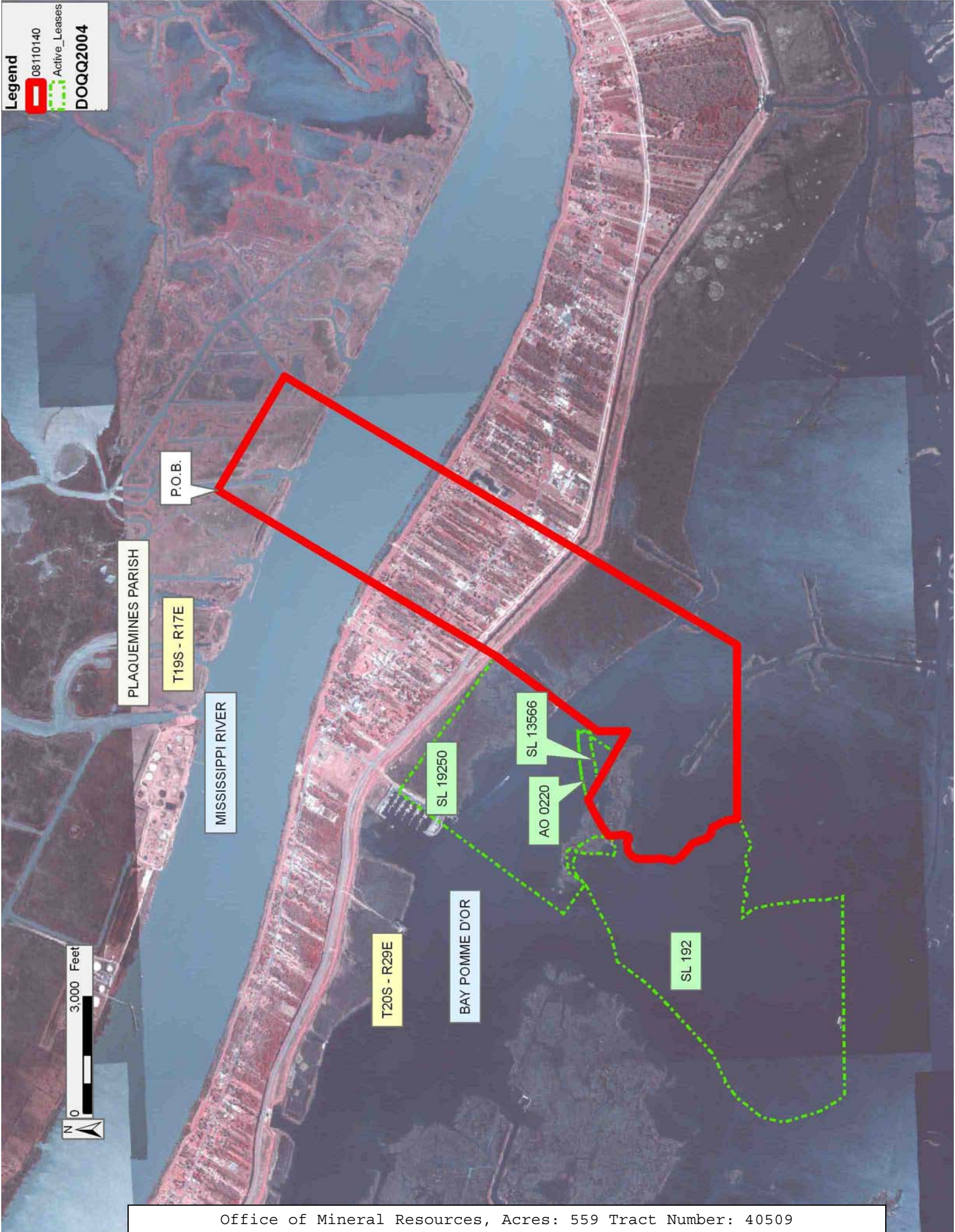
NOTE: The Department of Wildlife and Fisheries has designated certain areas in the coastal waters of the State of Louisiana as Oyster Seed Bed Areas. The exact location of those Seed Bed Areas must be obtained from the Department of Wildlife and Fisheries and any work done under a mineral lease from the State of Louisiana may necessarily be conducted in conformity with the rules and regulations promulgated by the said Department of Wildlife and Fisheries for Oyster Seed Bed Areas.

Applicant: CYPRESS ENERGY CORPORATION

Bidder	Cash Payment	Price/Acre	Rental	Oil	Gas	Other

Legend

- 08110140
- Active_Leases
- DOQQ2004



TRACT 40510 - Plaquemines Parish, Louisiana

All of the lands now or formerly constituting the beds and bottoms of all water bodies of every nature and description as to which title is vested in the State of Louisiana, together with all islands arising therein and other lands formed by accretion or by reliction, where allowed by law, excepting tax adjudicated lands, and not presently under mineral lease on November 12, 2008, situated in Plaquemines Parish, Louisiana, and more particularly described as follows: Beginning at a point having Coordinates of X = 2,490,900.00 and Y = 247,500.00; thence South 1,024.72 feet to a point having Coordinates of X = 2,490,900.00 and Y = 246,475.28; thence West 1,831.53 feet to a point having Coordinates of X = 2,489,068.47 and Y = 246,475.28; thence North 3,368.12 feet to the Southeast corner of State Lease No. 19505 having Coordinates of X = 2,489,068.47 and Y = 249,843.40; thence North 660.00 feet along the East boundary of said State Lease No. 19505 to its Northeast corner having Coordinates of X = 2,489,068.47 and Y = 250,503.40; thence South 89 degrees 49 minutes 53 seconds East 1,831.54 feet to a point having Coordinates of X = 2,490,900.00 and Y = 250,498.01; thence South 1,096.25 feet to a point on the boundary of the Easternmost portion of State Lease No. 17722, as amended, having Coordinates of X = 2,490,900.00 and Y = 249,401.76; thence along the boundary of the Easternmost portion of said State Lease No. 17722 the following courses: North 40 degrees 27 minutes 07 seconds West 97.52 feet to a point having Coordinates of X = 2,490,836.73 and Y = 249,475.97; South 49 degrees 32 minutes 53 seconds West 700.00 feet to a point having Coordinates of X = 2,490,304.06 and Y = 249,021.80; South 40 degrees 27 minutes 07 seconds East 700.00 feet to a point having Coordinates of X = 2,490,758.23 and Y = 248,489.14 and North 49 degrees 32 minutes 53 seconds East 186.30 feet to a point having Coordinates of X = 2,490,900.00 and Y = 248,610.01; thence South 1,110.01 feet to the point of beginning, **LESS AND EXCEPT** in its entirety the Northernmost portion of State Lease No. 17722, as amended, which lies within the above described tract, the Northernmost portion of said State Lease No. 17722 being more particularly described as follows: Commencing at the point of beginning of the above described tract having Coordinates of X = 2,490,900.00 and Y = 247,500.00; thence North 20 degrees 24 minutes 38 seconds West 3,008.86 feet to the Northernmost corner of said Northernmost portion of State Lease No. 17722 having Coordinates of X = 2,489,850.67 and Y = 250,319.96; thence along the boundary of said Northernmost portion of State Lease No. 17722 the following courses: South 57 degrees 05 minutes 15 seconds East 700.00 feet; South 32 degrees 54 minutes 40 seconds West 799.19 feet; North 57 degrees 05 minutes 19 seconds West 700.00 feet; North 32 degrees 54 minutes 41 seconds East 799.20 feet back to its Northernmost corner, **ALSO LESS AND EXCEPT** in its entirety the Southernmost portion of State Lease No. 17722, as amended, which lies within the above described tract, the Southernmost portion of said State Lease No. 17722 being more particularly described as follows: Commencing at the point of beginning of the above described tract having Coordinates of X = 2,490,900.00 and Y = 247,500.00; thence North 53 degrees 52 minutes 38 seconds West 1,217.29 feet to the Northwest corner of said Southernmost portion of State Lease No. 17722

having Coordinates of X = 2,489,916.73 and Y = 248,217.61; thence along the boundary of said Southernmost portion of State Lease No. 17722 the following courses: South 79 degrees 56 minutes 44 seconds East 700.00 feet; South 10 degrees 03 minutes 16 seconds West 700.00 feet; North 79 degrees 56 minutes 44 seconds West 700.00 feet and North 10 degrees 03 minutes 16 seconds East 700.00 feet back to its Northwest corner; available acreage of above described tract being approximately **58.226 acres**, all as more particularly outlined on a plat on file in the Office of Mineral Resources, Department of Natural Resources. All bearings, distances and coordinates are based on Louisiana Coordinate System of 1927, (North or South Zone), where applicable.

NOTE: The above description of the Tract nominated for lease has been provided and corrected, where required, exclusively by the nomination party. Any mineral lease selected from this Tract and awarded by the Louisiana State Mineral Board shall be without warranty of any kind, either express, implied, or statutory, including, but not limited to, the implied warranties of merchantability and fitness for a particular purpose. Should the mineral lease awarded by the Louisiana State Mineral Board be subsequently modified, cancelled or abrogated due to the existence of conflicting leases, operating agreements, private claims or other future obligations or conditions which may affect all or any portion of the leased Tract, it shall not relieve the Lessee of the obligation to pay any bonus due thereon to the Louisiana State Mineral Board, nor shall the Louisiana State Mineral Board be obligated to refund any consideration paid by the Lessor prior to such modification, cancellation, or abrogation, including, but not limited to, bonuses, rentals and royalties.

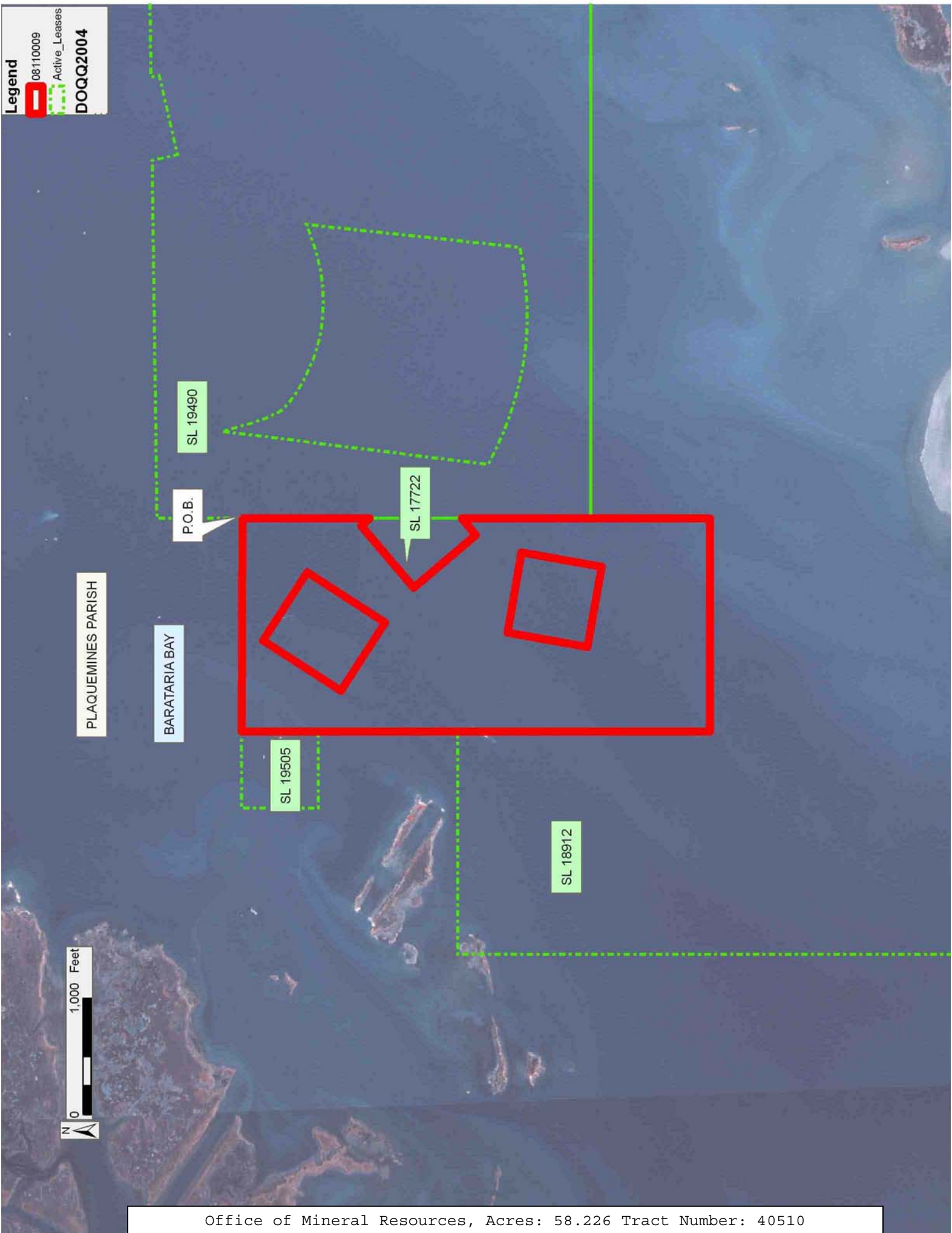
NOTE: The State of Louisiana does hereby reserve, and this lease shall be subject to, the imprescriptible right of surface use in the nature of a servitude in favor of the Department of Natural Resources, including its Offices and Commissions, for the sole purpose of implementing, constructing, servicing and maintaining approved coastal zone management and/or restoration projects. Utilization of any and all rights derived under this lease by the mineral lessee, its agents, successors or assigns, shall not interfere with nor hinder the reasonable surface use by the Department of Natural Resources, its Offices or Commissions, as herein above reserved.

NOTE: The Department of Wildlife and Fisheries has designated certain areas in the coastal waters of the State of Louisiana as Oyster Seed Bed Areas. The exact location of those Seed Bed Areas must be obtained from the Department of Wildlife and Fisheries and any work done under a mineral lease from the State of Louisiana may necessarily be conducted in conformity with the rules and regulations promulgated by the said Department of Wildlife and Fisheries for Oyster Seed Bed Areas.

Applicant: MARK A. O'NEAL & ASSOCIATES, INC.

Bidder	Cash Payment	Price/Acre	Rental	Oil	Gas	Other

Legend
08110009
Active_Leases
DOQQ2004



PLAQUEMINES PARISH

BARATARIA BAY

P.O.B.

SL 19490

SL 17722

SL 19505

SL 18912



TRACT 40511 - Lafourche Parish, Louisiana

All of the lands now or formerly constituting the beds and bottoms of all water bodies of every nature and description as to which title is vested in the State of Louisiana, together with all islands arising therein and other lands formed by accretion or by reliction, where allowed by law, excepting tax adjudicated lands, and not presently under mineral lease on November 12, 2008, situated in Lafourche Parish, Louisiana, and more particularly described as follows: Beginning at the Northeast corner of State Lease No. 192, Lafourche Parish, Louisiana, having Coordinates of X = 2,336,122.86 and Y = 163,269.61; thence South 68 degrees 22 minutes 13 seconds West 5,555.24 feet along the North boundary of said State Lease No. 192 to the Southeast corner of State Lease No. 1773, having Coordinates of X = 2,330,958.79 and Y = 161,221.91; thence along the boundary of said State Lease No. 1773 the following courses: North 21 degrees 37 minutes 48 seconds West 412.03 feet to a point having Coordinates of X = 2,330,806.91 and Y = 161,604.93, North 82 degrees 36 minutes 50 seconds West 1,087.00 feet to a point having Coordinates of X = 2,329,728.93 and Y = 161,744.67, South 80 degrees 39 minutes 19 seconds West 800.00 feet to a point having Coordinates of X = 2,328,939.55 and Y = 161,614.77, South 62 degrees 11 minutes 00 seconds West 123.24 feet to a intersecting point on State Lease No. 19572, having Coordinates of X = 2,328,830.55 and Y = 161,557.26; thence North 21 degrees 37 minutes 48 seconds West 973.77 feet to a point having Coordinates of X = 2,328,471.61 and Y = 162,462.46; thence North 68 degrees 22 minutes 13 seconds East 7,410.01 feet to a point on the East boundary of said State Lease No. 19572, and the West boundary of State Lease No. 19571, having Coordinates of X = 2,335,359.85 and Y = 165,193.84; thence North 21 degrees 37 minutes 48 seconds West 570.01 feet along the East boundary of said State Lease No. 19572, and the West boundary of said State Lease No. 19571, having Coordinates of X = 2,335,149.74 and Y = 165,723.71; thence North 68 degrees 22 minutes 12 seconds East 1,320.00 feet to a point having Coordinates of X = 2,336,376.79 and Y = 166,210.28; thence South 21 degrees 37 minutes 47 seconds East 5,280.01 feet to a point having Coordinates of X = 2,338,323.03 and Y = 161,302.06; thence South 68 degrees 22 minutes 13 seconds West 1,320.00 feet to a point on the West boundary of said State Lease No. 19571, and the East boundary of said State Lease No. 192, having Coordinates of X = 2,337,095.98 and Y = 160,815.50; thence North 21 degrees 37 minutes 47 seconds West 2,640.00 feet to the point of beginning, containing approximately **475.90 acres**, all as more particularly outlined on a plat on file in the Office of Mineral Resources, Department of Natural Resources. All bearings, distances and coordinates are based on Louisiana Coordinate System of 1927, (North or South Zone), where applicable.

NOTE: The above description of the Tract nominated for lease has been provided and corrected, where required, exclusively by the nomination party. Any mineral lease selected from this Tract and awarded by the Louisiana State Mineral Board shall be without warranty of any kind, either express, implied, or statutory, including, but not limited to, the

implied warranties of merchantability and fitness for a particular purpose. Should the mineral lease awarded by the Louisiana State Mineral Board be subsequently modified, cancelled or abrogated due to the existence of conflicting leases, operating agreements, private claims or other future obligations or conditions which may affect all or any portion of the leased Tract, it shall not relieve the Lessee of the obligation to pay any bonus due thereon to the Louisiana State Mineral Board, nor shall the Louisiana State Mineral Board be obligated to refund any consideration paid by the Lessor prior to such modification, cancellation, or abrogation, including, but not limited to, bonuses, rentals and royalties.

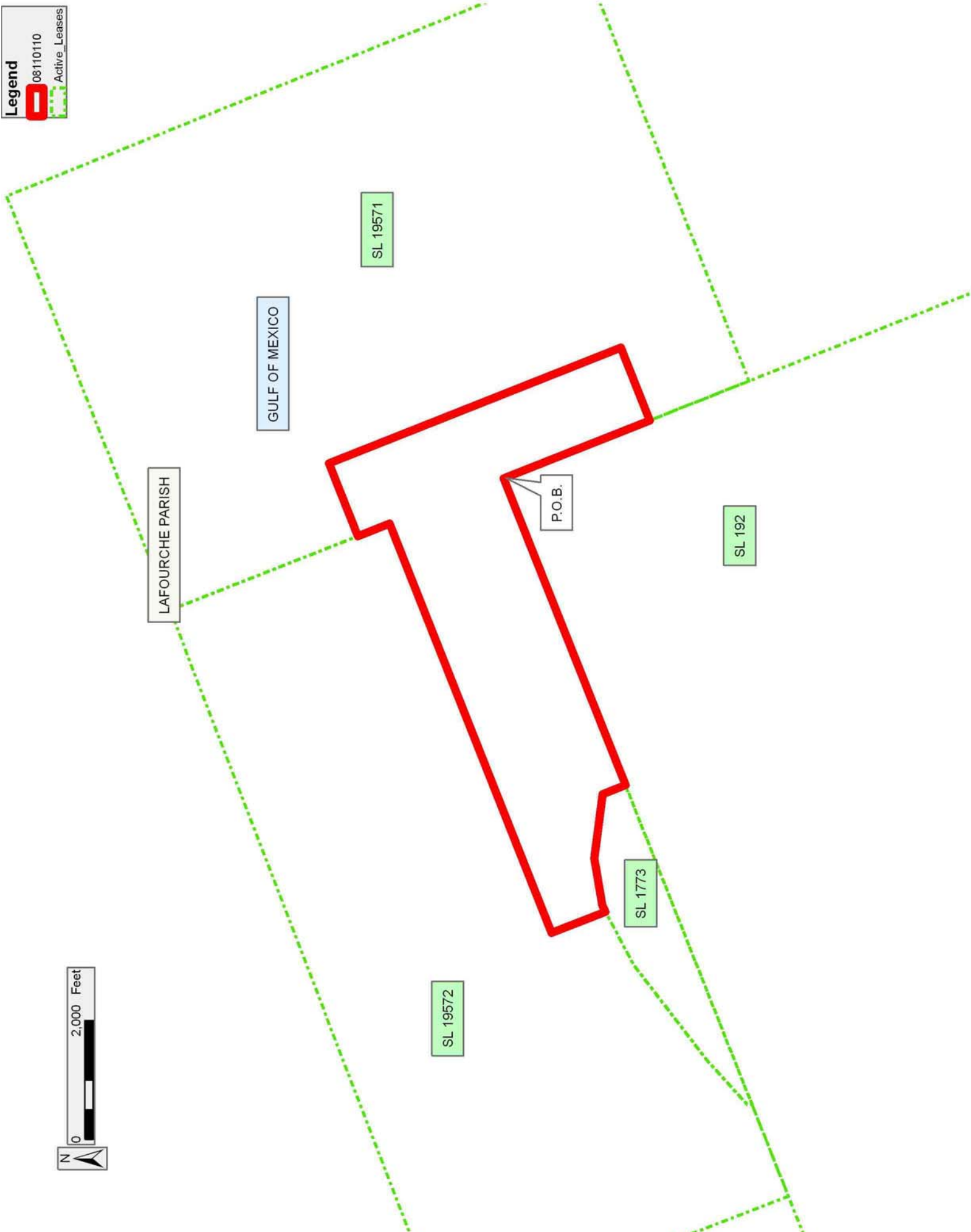
NOTE: The State of Louisiana does hereby reserve, and this lease shall be subject to, the imprescriptible right of surface use in the nature of a servitude in favor of the Department of Natural Resources, including its Offices and Commissions, for the sole purpose of implementing, constructing, servicing and maintaining approved coastal zone management and/or restoration projects. Utilization of any and all rights derived under this lease by the mineral lessee, its agents, successors or assigns, shall not interfere with nor hinder the reasonable surface use by the Department of Natural Resources, its Offices or Commissions, as herein above reserved.

NOTE: The Department of Wildlife and Fisheries has designated certain areas in the coastal waters of the State of Louisiana as Oyster Seed Bed Areas. The exact location of those Seed Bed Areas must be obtained from the Department of Wildlife and Fisheries and any work done under a mineral lease from the State of Louisiana may necessarily be conducted in conformity with the rules and regulations promulgated by the said Department of Wildlife and Fisheries for Oyster Seed Bed Areas.

Applicant: AUDUBON OIL AND GAS CORPORATION

Bidder	Cash Payment	Price/Acre	Rental	Oil	Gas	Other

Legend
08110110
Active_Leases



TRACT 40512 - Lafourche Parish, Louisiana

All of the lands now or formerly constituting the beds and bottoms of all water bodies of every nature and description as to which title is vested in the State of Louisiana, together with all islands arising therein and other lands formed by accretion or by reliction, where allowed by law, excepting tax adjudicated lands, and not presently under mineral lease on November 12, 2008, situated in Lafourche Parish, Louisiana, and more particularly described as follows: Beginning at a point on the West boundary of State Lease No. 192, and the Southwest corner of State Lease No. 19571, Lafourche Parish, Louisiana, having Coordinates of X = 2,337,759.32 and Y = 159,142.65; thence North 68 degrees 29 minutes 52 seconds East 5,992.42 feet along the South boundary of said State Lease No. 19571, to a point having Coordinates of X = 2,343,334.68 and Y = 161,339.11; thence South 22 degrees 32 minutes 54 seconds East 2,600.00 feet to a point having Coordinates of X = 2,344,331.69 and Y = 158,937.86; thence South 68 degrees 29 minutes 37 seconds West 6,034.11 feet to a point on the East boundary of said State Lease No. 192, having Coordinates of X = 2,338,717.69 and Y = 156,725.73; thence North 21 degrees 37 minutes 46 seconds West 2,600.00 feet along the boundary of said State Lease No. 192, to the point of beginning, containing approximately **358.89 acres**, all as more particularly outlined on a plat on file in the Office of Mineral Resources, Department of Natural Resources. All bearings, distances and coordinates are based on Louisiana Coordinate System of 1927, (North or South Zone), where applicable.

NOTE: The above description of the Tract nominated for lease has been provided and corrected, where required, exclusively by the nomination party. Any mineral lease selected from this Tract and awarded by the Louisiana State Mineral Board shall be without warranty of any kind, either express, implied, or statutory, including, but not limited to, the implied warranties of merchantability and fitness for a particular purpose. Should the mineral lease awarded by the Louisiana State Mineral Board be subsequently modified, cancelled or abrogated due to the existence of conflicting leases, operating agreements, private claims or other future obligations or conditions which may affect all or any portion of the leased Tract, it shall not relieve the Lessee of the obligation to pay any bonus due thereon to the Louisiana State Mineral Board, nor shall the Louisiana State Mineral Board be obligated to refund any consideration paid by the Lessor prior to such modification, cancellation, or abrogation, including, but not limited to, bonuses, rentals and royalties.

NOTE: The State of Louisiana does hereby reserve, and this lease shall be subject to, the imprescriptible right of surface use in the nature of a servitude in favor of the Department of Natural Resources, including its Offices and Commissions, for the sole purpose of implementing, constructing, servicing and maintaining approved coastal zone management and/or restoration projects. Utilization of any and all rights derived under this lease by the mineral lessee, its agents, successors or assigns, shall not interfere with nor hinder the reasonable surface use by the

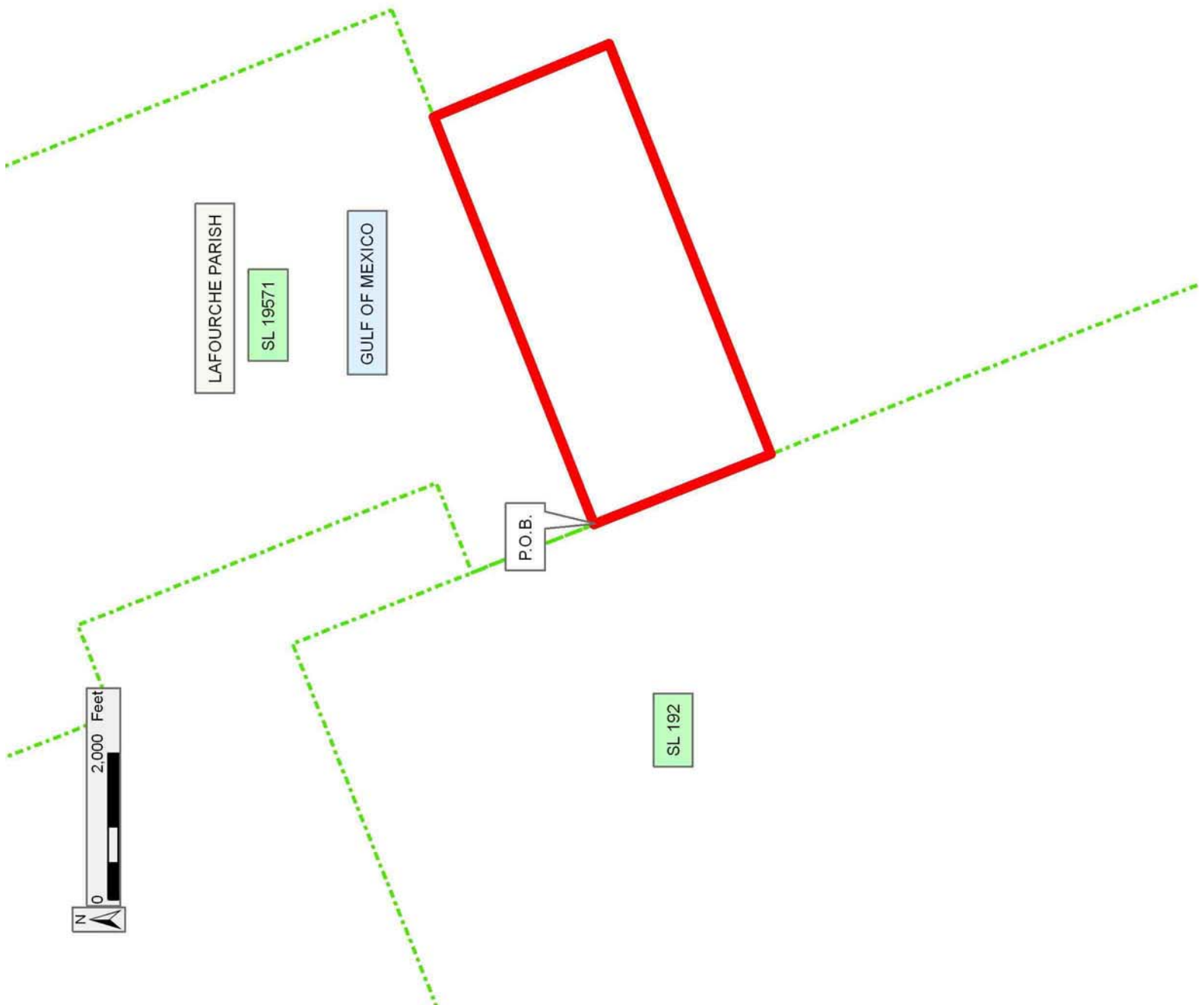
Department of Natural Resources, its Offices or Commissions, as herein above reserved.

NOTE: The Department of Wildlife and Fisheries has designated certain areas in the coastal waters of the State of Louisiana as Oyster Seed Bed Areas. The exact location of those Seed Bed Areas must be obtained from the Department of Wildlife and Fisheries and any work done under a mineral lease from the State of Louisiana may necessarily be conducted in conformity with the rules and regulations promulgated by the said Department of Wildlife and Fisheries for Oyster Seed Bed Areas.

Applicant: AUDUBON OIL AND GAS CORPORATION

Bidder	Cash Payment	Price/Acre	Rental	Oil	Gas	Other

Legend
08110113
Active_Leases



TRACT 40513 - Lafourche Parish, Louisiana

All of the lands now or formerly constituting the beds and bottoms of all water bodies of every nature and description as to which title is vested in the State of Louisiana, together with all islands arising therein and other lands formed by accretion or by reliction, where allowed by law, excepting tax adjudicated lands, and not presently under mineral lease on November 12, 2008, situated in Lafourche Parish, Louisiana, and more particularly described as follows: Beginning at a point on the Louisiana Coastline, as decreed by the Supreme Court of the United States, as determined by a Special Master appointed therein, in litigation styled *United States v. State of Louisiana et al No. 9 Original*, in 1975, also being a point on the East boundary of State Lease No. 192, Lafourche Parish, Louisiana, having Coordinates of X = 2,340,952.57 and Y = 151,089.60; thence North 21 degrees 37 minutes 46 seconds West 2,600.00 feet along the boundary of said State Lease No. 192, having Coordinates of X = 2,339,994.20 and Y = 153,506.52; thence North 70 degrees 17 minutes 46 seconds East 6,096.17 feet to a point having Coordinates of X = 2,345,733.42 and Y = 155,561.90; thence South 22 degrees 32 minutes 55 seconds East 2,600.00 feet to a point on said Louisiana Coastline, having Coordinates of X = 2,346,730.44 and Y = 153,160.66; thence along said Louisiana Coastline the following courses: South 70 degrees 31 minutes 29 seconds West 4,902.96 feet to a point having Coordinates of X = 2,342,108 and Y = 151,526 and South 69 degrees 18 minutes 31 seconds West 1,235.10 feet to the point of beginning, containing approximately **363.31 acres**, all as more particularly outlined on a plat on file in the Office of Mineral Resources, Department of Natural Resources. All bearings, distances and coordinates are based on Louisiana Coordinate System of 1927, (North or South Zone), where applicable.

NOTE: The above description of the Tract nominated for lease has been provided and corrected, where required, exclusively by the nomination party. Any mineral lease selected from this Tract and awarded by the Louisiana State Mineral Board shall be without warranty of any kind, either express, implied, or statutory, including, but not limited to, the implied warranties of merchantability and fitness for a particular purpose. Should the mineral lease awarded by the Louisiana State Mineral Board be subsequently modified, cancelled or abrogated due to the existence of conflicting leases, operating agreements, private claims or other future obligations or conditions which may affect all or any portion of the leased Tract, it shall not relieve the Lessee of the obligation to pay any bonus due thereon to the Louisiana State Mineral Board, nor shall the Louisiana State Mineral Board be obligated to refund any consideration paid by the Lessor prior to such modification, cancellation, or abrogation, including, but not limited to, bonuses, rentals and royalties.

NOTE: The State of Louisiana does hereby reserve, and this lease shall be subject to, the imprescriptible right of surface use in the nature of a servitude in favor of the Department of Natural Resources, including its Offices and Commissions, for the sole purpose of implementing,

constructing, servicing and maintaining approved coastal zone management and/or restoration projects. Utilization of any and all rights derived under this lease by the mineral lessee, its agents, successors or assigns, shall not interfere with nor hinder the reasonable surface use by the Department of Natural Resources, its Offices or Commissions, as herein above reserved.

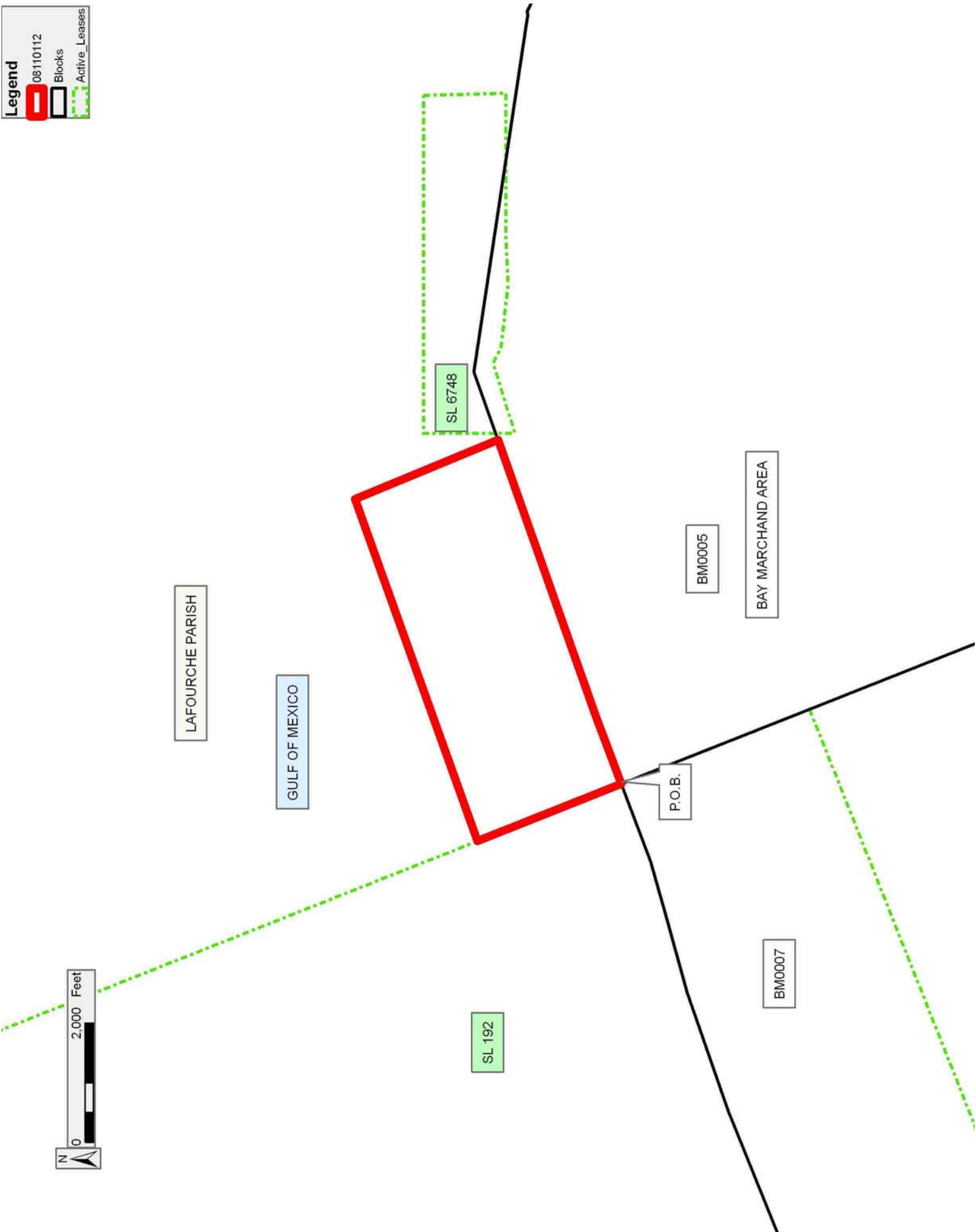
NOTE: The Department of Wildlife and Fisheries has designated certain areas in the coastal waters of the State of Louisiana as Oyster Seed Bed Areas. The exact location of those Seed Bed Areas must be obtained from the Department of Wildlife and Fisheries and any work done under a mineral lease from the State of Louisiana may necessarily be conducted in conformity with the rules and regulations promulgated by the said Department of Wildlife and Fisheries for Oyster Seed Bed Areas.

Applicant: AUDUBON OIL AND GAS CORPORATION

Bidder	Cash Payment	Price/Acre	Rental	Oil	Gas	Other

Legend

- 08110112
- Blocks
- Active_Leases



TRACT 40514 - Lafourche Parish, Louisiana

All of the lands now or formerly constituting the beds and bottoms of all water bodies of every nature and description as to which title is vested in the State of Louisiana, together with all islands arising therein and other lands formed by accretion or by reliction, where allowed by law, excepting tax adjudicated lands, and not presently under mineral lease on November 12, 2008, situated in Lafourche Parish, Louisiana, and more particularly described as follows: Beginning at a point on the Northern boundary of State Lease No. 1772, as amended, having Coordinates of X = 2,321,489.24 and Y = 151,875.00; thence North 89 degrees 58 minutes 41 seconds West 7,824.51 feet along the Northern boundary of said State Lease No. 1772 to its Westernmost Northwest corner having Coordinates of X = 2,313,664.73 and Y = 151,877.98; thence North 89 degrees 58 minutes 36 seconds West 49.33 feet to a point having Coordinates of X = 2,313,615.40 and Y = 151,878.00; thence North 1,311.66 feet to a point having Coordinates of X = 2,313,615.40 and Y = 153,189.66; thence North 89 degrees 50 minutes 16 seconds East 7,870.08 feet to a point on the Western boundary of said State Lease No. 1772 having Coordinates of X = 2,321,485.45 and Y = 153,211.93; thence South 00 degrees 09 minutes 45 seconds East 1,336.94 feet along the Western boundary of said State Lease No. 1772 to the point of beginning, containing approximately **239.32 acres**, all as more particularly outlined on a plat on file in the Office of Mineral Resources, Department of Natural Resources. All bearings, distances and coordinates are based on Louisiana Coordinate System of 1927, (North or South Zone), where applicable.

NOTE: The above description of the Tract nominated for lease has been provided and corrected, where required, exclusively by the nomination party. Any mineral lease selected from this Tract and awarded by the Louisiana State Mineral Board shall be without warranty of any kind, either express, implied, or statutory, including, but not limited to, the implied warranties of merchantability and fitness for a particular purpose. Should the mineral lease awarded by the Louisiana State Mineral Board be subsequently modified, cancelled or abrogated due to the existence of conflicting leases, operating agreements, private claims or other future obligations or conditions which may affect all or any portion of the leased Tract, it shall not relieve the Lessee of the obligation to pay any bonus due thereon to the Louisiana State Mineral Board, nor shall the Louisiana State Mineral Board be obligated to refund any consideration paid by the Lessor prior to such modification, cancellation, or abrogation, including, but not limited to, bonuses, rentals and royalties.

NOTE: The State of Louisiana does hereby reserve, and this lease shall be subject to, the imprescriptible right of surface use in the nature of a servitude in favor of the Department of Natural Resources, including its Offices and Commissions, for the sole purpose of implementing, constructing, servicing and maintaining approved coastal zone management and/or restoration projects. Utilization of any and all rights derived under this lease by the mineral lessee, its agents, successors or assigns,

shall not interfere with nor hinder the reasonable surface use by the Department of Natural Resources, its Offices or Commissions, as herein above reserved.

NOTE: The Department of Wildlife and Fisheries has designated certain areas in the coastal waters of the State of Louisiana as Oyster Seed Bed Areas. The exact location of those Seed Bed Areas must be obtained from the Department of Wildlife and Fisheries and any work done under a mineral lease from the State of Louisiana may necessarily be conducted in conformity with the rules and regulations promulgated by the said Department of Wildlife and Fisheries for Oyster Seed Bed Areas.

Applicant: AUDUBON OIL AND GAS CORPORATION

Bidder	Cash Payment	Price/Acre	Rental	Oil	Gas	Other



Legend

-  08110109
-  Active_Leases

LAFOURCHE PARISH

GULF OF MEXICO



P.O.B.

SL 1772

