

**TRACT 40496 - Jefferson and Lafourche Parishes, Louisiana**

All of the lands now or formerly constituting the beds and bottoms of all water bodies of every nature and description as to which title is vested in the State of Louisiana, together with all islands arising therein and other lands formed by accretion or by reliction, where allowed by law, excepting tax adjudicated lands, and not presently under mineral lease on November 12, 2008, situated in Jefferson and Lafourche Parishes, Louisiana, and more particularly described as follows: Beginning at a point having Coordinates of X = 2,362,860.00 and Y = 379,500.00; thence East 9,869.00 feet having Coordinates of X = 2,372,729.00 and Y = 379,500.00; thence South 8,263.00 feet to the Northeast corner of State Lease No. 18748 having Coordinates of X = 2,372,729.00 and Y = 371,237.00; thence West 2,915.27 feet along the Northern boundary of said State Lease No. 18748 to its Northwest corner, also being the Northeast corner of State Lease No. 18868 having Coordinates of X = 2,369,813.73 and Y = 371,237.00; thence West 600.00 feet along the Northern boundary of said State Lease No. 18868 to its Northwest corner, also being the Northeast corner of State Lease No. 19208 having Coordinates of X = 2,369,213.73 and Y = 371,237.00; thence along the boundary of said State Lease No. 19208 the following courses: West 500.00 feet and South 49 degrees 36 minutes 30 seconds East 1,882.62 feet to its Southernmost corner, also being a point on the boundary of said State Lease No. 18868 having Coordinates of X = 2,370,147.59 and Y = 370,017.05; thence South 37 degrees 26 minutes 02 seconds East 1,385.35 feet along the boundary of said State Lease No. 18868 to its Southernmost corner, also being the Southwest corner of said State Lease No. 18748 having Coordinates of X = 2,370,989.67 and Y = 368,917.00; thence East 1,739.33 feet along the Southern boundary of said State Lease No. 18748 to its Southeast corner having Coordinates of X = 2,372,729.00 and Y = 368,917.00; thence South 7,897.00 feet to a point having Coordinates of X = 2,372,729.00 and Y = 361,020.00; thence West 9,869.00 feet to a point having Coordinates of X = 2,362,860.00 and Y = 361,020.00; thence North 18,480.00 feet to the point of beginning, containing approximately **1,047 acres**, all as more particularly outlined on a plat on file in the Office of Mineral Resources, Department of Natural Resources. All bearings, distances and coordinates are based on Louisiana Coordinate System of 1927, (North or South Zone), where applicable.

NOTE: The above description of the Tract nominated for lease has been provided and corrected, where required, exclusively by the nomination party. Any mineral lease selected from this Tract and awarded by the Louisiana State Mineral Board shall be without warranty of any kind, either express, implied, or statutory, including, but not limited to, the implied warranties of merchantability and fitness for a particular purpose. Should the mineral lease awarded by the Louisiana State Mineral Board be subsequently modified, cancelled or abrogated due to the existence of conflicting leases, operating agreements, private claims or other future obligations or conditions which may affect all or any portion of the leased Tract, it shall not relieve the Lessee of the obligation to pay any bonus due thereon to the Louisiana State Mineral Board, nor shall the Louisiana State Mineral Board be obligated to refund any consideration

paid by the Lessor prior to such modification, cancellation, or abrogation, including, but not limited to, bonuses, rentals and royalties.

NOTE: The State of Louisiana does hereby reserve, and this lease shall be subject to, the imprescriptible right of surface use in the nature of a servitude in favor of the Department of Natural Resources, including its Offices and Commissions, for the sole purpose of implementing, constructing, servicing and maintaining approved coastal zone management and/or restoration projects. Utilization of any and all rights derived under this lease by the mineral lessee, its agents, successors or assigns, shall not interfere with nor hinder the reasonable surface use by the Department of Natural Resources, its Offices or Commissions, as herein above reserved.

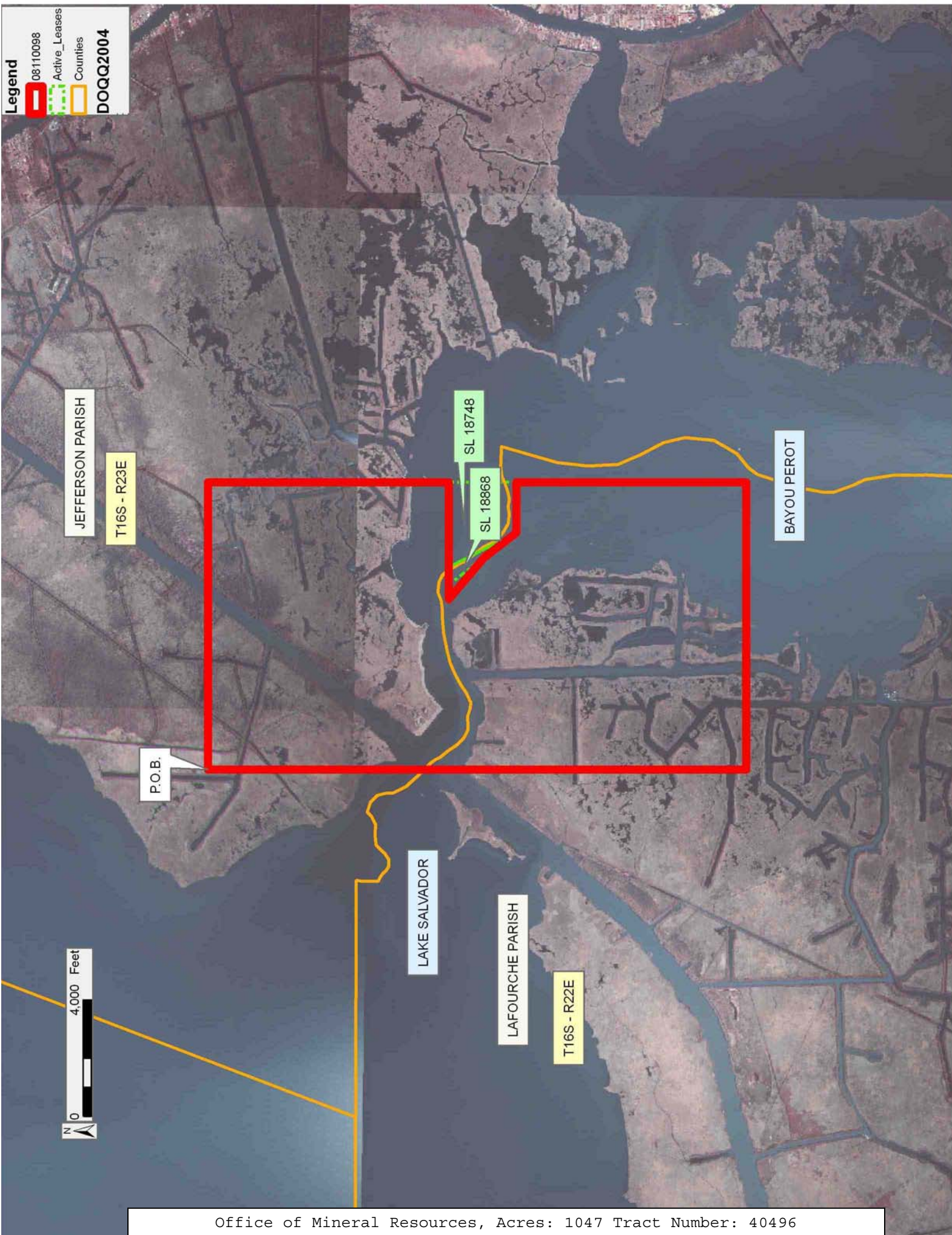
Applicant: HARPER PETROLEUM COMPANY, INC.

Bidder	Cash Payment	Price/Acre	Rental	Oil	Gas	Other

**Legend**

- 08110098
- Active\_Leases
- Counties

**DOQQ2004**



**TRACT 40497 - Jefferson Lafourche and St. Charles Parishes, Louisiana**

All of the lands now or formerly constituting the beds and bottoms of all water bodies of every nature and description as to which title is vested in the State of Louisiana, together with all islands arising therein and other lands formed by accretion or by reliction, where allowed by law, excepting tax adjudicated lands, and not presently under mineral lease on November 12, 2008, situated in Jefferson Lafourche and St. Charles Parishes, Louisiana, and more particularly described as follows: Beginning at a point on the East boundary of State Lease No. 19232 having Coordinates of X = 2,345,510.00 and Y = 378,250.00; thence East 8,075.00 feet to a point having Coordinates of X = 2,353,585.00 and Y = 378,250.00; thence South 17,230.00 feet to a point having Coordinates of X = 2,353,585.00 and Y = 361,020.00; thence West 8,075.00 feet to a point having Coordinates of X = 2,345,510.00 and Y = 361,020.00; thence North 12,280.00 feet to the Southeast corner of said State Lease No. 19232 having Coordinates of X = 2,345,510.00 and Y = 373,300.00; thence North 4,950.00 feet along the East boundary of said State Lease No. 19232 to the point of beginning, containing approximately **2,441 acres**, all as more particularly outlined on a plat on file in the Office of Mineral Resources, Department of Natural Resources. All bearings, distances and coordinates are based on Louisiana Coordinate System of 1927, (North or South Zone), where applicable.

NOTE: The above description of the Tract nominated for lease has been provided and corrected, where required, exclusively by the nomination party. Any mineral lease selected from this Tract and awarded by the Louisiana State Mineral Board shall be without warranty of any kind, either express, implied, or statutory, including, but not limited to, the implied warranties of merchantability and fitness for a particular purpose. Should the mineral lease awarded by the Louisiana State Mineral Board be subsequently modified, cancelled or abrogated due to the existence of conflicting leases, operating agreements, private claims or other future obligations or conditions which may affect all or any portion of the leased Tract, it shall not relieve the Lessee of the obligation to pay any bonus due thereon to the Louisiana State Mineral Board, nor shall the Louisiana State Mineral Board be obligated to refund any consideration paid by the Lessor prior to such modification, cancellation, or abrogation, including, but not limited to, bonuses, rentals and royalties.

NOTE: The State of Louisiana does hereby reserve, and this lease shall be subject to, the imprescriptible right of surface use in the nature of a servitude in favor of the Department of Natural Resources, including its Offices and Commissions, for the sole purpose of implementing, constructing, servicing and maintaining approved coastal zone management and/or restoration projects. Utilization of any and all rights derived under this lease by the mineral lessee, its agents, successors or assigns, shall not interfere with nor hinder the reasonable surface use by the Department of Natural Resources, its Offices or Commissions, as herein above reserved.

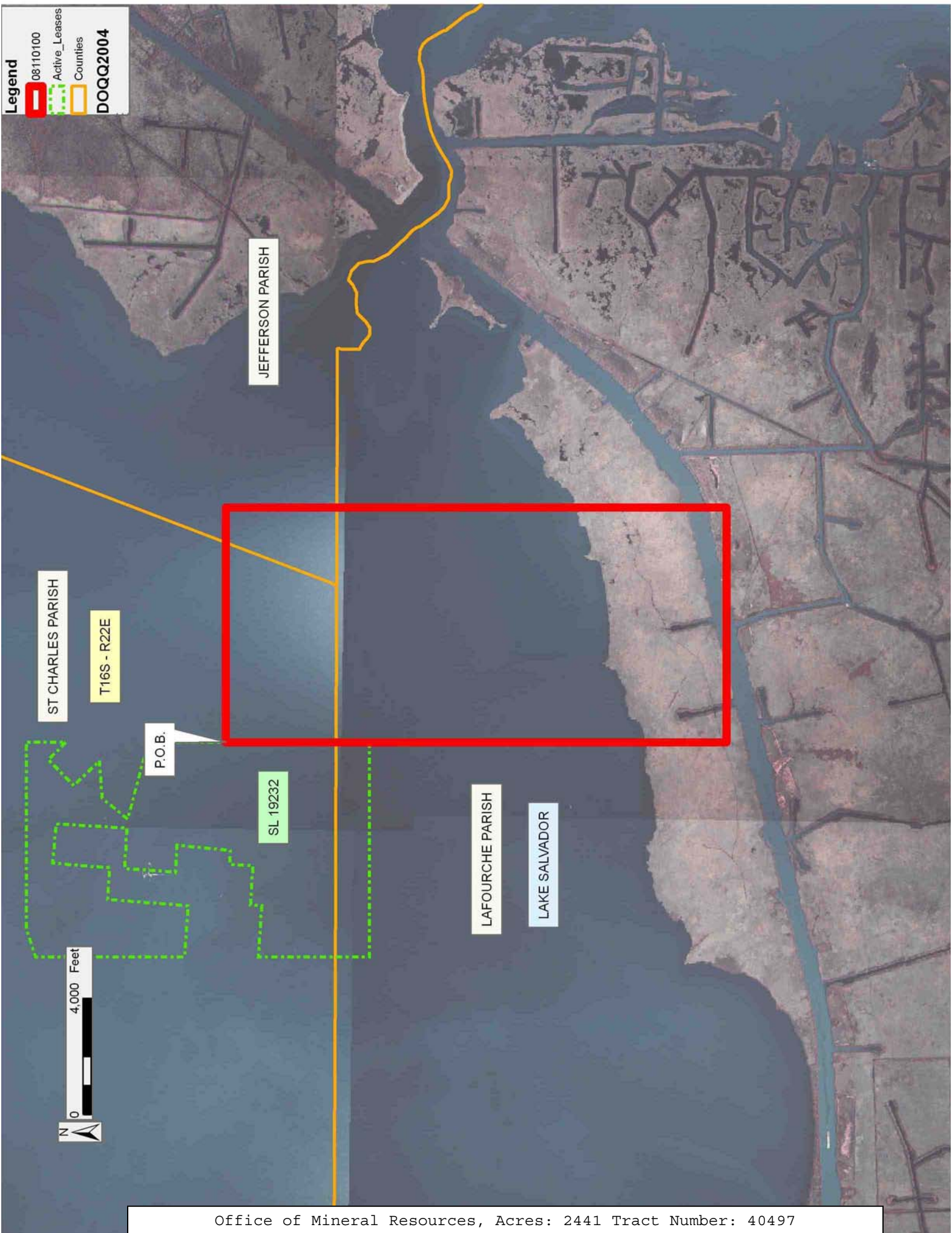
Applicant: HARPER PETROLEUM COMPANY, INC.

Bidder	Cash Payment	Price/Acre	Rental	Oil	Gas	Other

**Legend**

- 08110100
- Active\_Leases
- Counties

**DOQQ2004**



**TRACT 40498 - Lafourche Parish, Louisiana**

All of the lands now or formerly constituting the beds and bottoms of all water bodies of every nature and description as to which title is vested in the State of Louisiana, together with all islands arising therein and other lands formed by accretion or by reliction, where allowed by law, excepting tax adjudicated lands, and not presently under mineral lease on November 12, 2008, situated in Lafourche Parish, Louisiana, and more particularly described as follows: Beginning at the Southwest corner of State Lease No. 19232 having Coordinates of X = 2,338,135.00 and Y = 373,300.00; thence East 7,375.00 feet along the South boundary of said State Lease No. 19232 to its Southeast corner having Coordinates of X = 2,345,510.00 and Y = 373,300.00; thence South 12,280.00 feet to a point having Coordinates of X = 2,345,510.00 and Y = 361,020.00; thence West 7,375.00 feet to a point having Coordinates of X = 2,338,135.00 and Y = 361,020.00; thence North 12,280.00 feet to the point of beginning, containing approximately **1,680 acres**, all as more particularly outlined on a plat on file in the Office of Mineral Resources, Department of Natural Resources. All bearings, distances and coordinates are based on Louisiana Coordinate System of 1927, (North or South Zone), where applicable.

NOTE: The above description of the Tract nominated for lease has been provided and corrected, where required, exclusively by the nomination party. Any mineral lease selected from this Tract and awarded by the Louisiana State Mineral Board shall be without warranty of any kind, either express, implied, or statutory, including, but not limited to, the implied warranties of merchantability and fitness for a particular purpose. Should the mineral lease awarded by the Louisiana State Mineral Board be subsequently modified, cancelled or abrogated due to the existence of conflicting leases, operating agreements, private claims or other future obligations or conditions which may affect all or any portion of the leased Tract, it shall not relieve the Lessee of the obligation to pay any bonus due thereon to the Louisiana State Mineral Board, nor shall the Louisiana State Mineral Board be obligated to refund any consideration paid by the Lessor prior to such modification, cancellation, or abrogation, including, but not limited to, bonuses, rentals and royalties.

NOTE: The State of Louisiana does hereby reserve, and this lease shall be subject to, the imprescriptible right of surface use in the nature of a servitude in favor of the Department of Natural Resources, including its Offices and Commissions, for the sole purpose of implementing, constructing, servicing and maintaining approved coastal zone management and/or restoration projects. Utilization of any and all rights derived under this lease by the mineral lessee, its agents, successors or assigns, shall not interfere with nor hinder the reasonable surface use by the Department of Natural Resources, its Offices or Commissions, as herein above reserved.

Applicant: HARPER PETROLEUM COMPANY, INC.

Bidder	Cash Payment	Price/Acre	Rental	Oil	Gas	Other



**Legend**  
081110101  
Active\_Leases  
DOQQ2004

LAFOURCHE PARISH

T16S - R22E

SL 19232

P.O.B.

SL 19201

LAKE SALVADOR



**TRACT 40499 - Lafourche Parish, Louisiana**

All of the lands now or formerly constituting the beds and bottoms of all water bodies of every nature and description as to which title is vested in the State of Louisiana, together with all islands arising therein and other lands formed by accretion or by reliction, where allowed by law, excepting tax adjudicated lands, and not presently under mineral lease on November 12, 2008, situated in Lafourche Parish, Louisiana, and more particularly described as follows: Beginning at a point having Coordinates of X = 2,264,881.85 and Y = 350,227.62; thence East 6,060.14 feet to a point having Coordinates of X = 2,270,941.99 and Y = 350,227.62; thence Southerly approximately 7,571 feet to the Easternmost corner of State Lease No. 1730, as amended; thence along the boundary of said State Lease No. 1730 the following courses: Northwesterly and Southwesterly to its Westernmost corner; thence West approximately 459 feet to a point having Coordinates of X = 2,264,881.85 and Y = 341,697.87; thence North 8,529.74 feet to the point of beginning, containing approximately **14 acres**, all as more particularly outlined on a plat on file in the Office of Mineral Resources, Department of Natural Resources. All bearings, distances and coordinates are based on Louisiana Coordinate System of 1927, (North or South Zone), where applicable.

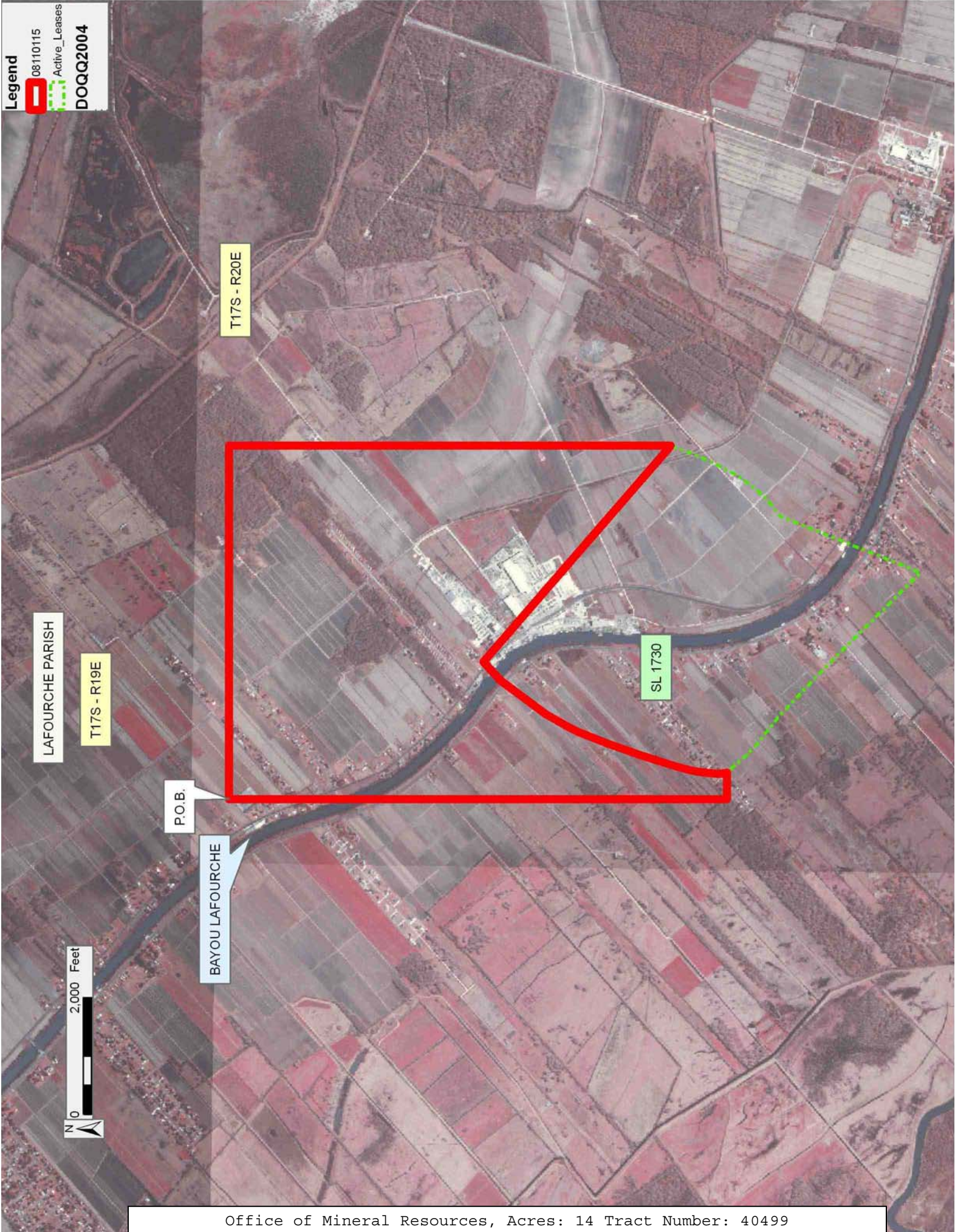
NOTE: The above description of the Tract nominated for lease has been provided and corrected, where required, exclusively by the nomination party. Any mineral lease selected from this Tract and awarded by the Louisiana State Mineral Board shall be without warranty of any kind, either express, implied, or statutory, including, but not limited to, the implied warranties of merchantability and fitness for a particular purpose. Should the mineral lease awarded by the Louisiana State Mineral Board be subsequently modified, cancelled or abrogated due to the existence of conflicting leases, operating agreements, private claims or other future obligations or conditions which may affect all or any portion of the leased Tract, it shall not relieve the Lessee of the obligation to pay any bonus due thereon to the Louisiana State Mineral Board, nor shall the Louisiana State Mineral Board be obligated to refund any consideration paid by the Lessor prior to such modification, cancellation, or abrogation, including, but not limited to, bonuses, rentals and royalties.

NOTE: The State of Louisiana does hereby reserve, and this lease shall be subject to, the imprescriptible right of surface use in the nature of a servitude in favor of the Department of Natural Resources, including its Offices and Commissions, for the sole purpose of implementing, constructing, servicing and maintaining approved coastal zone management and/or restoration projects. Utilization of any and all rights derived under this lease by the mineral lessee, its agents, successors or assigns, shall not interfere with nor hinder the reasonable surface use by the Department of Natural Resources, its Offices or Commissions, as herein above reserved.

Applicant: RDB RESOURCES

Bidder	Cash Payment	Price/Acre	Rental	Oil	Gas	Other

**Legend**  
08110115  
Active\_Leases  
DOQQ2004



**TRACT 40500 - Lafourche Parish, Louisiana**

All of the lands now or formerly constituting the beds and bottoms of all water bodies of every nature and description as to which title is vested in the State of Louisiana, together with all islands arising therein and other lands formed by accretion or by reliction, where allowed by law, excepting tax adjudicated lands, and not presently under mineral lease on November 12, 2008, situated in Lafourche Parish, Louisiana, and more particularly described as follows: Beginning at a point having Coordinates of X = 2,268,766.36 and Y = 331,609.83; thence Northerly approximately 6,772 feet to the Southernmost corner of said State Lease No. 1730, as amended; thence Northeasterly along the boundary of said State Lease No. 1730 to its Easternmost Northeast corner; thence East approximately 9,091 feet to a point having Coordinates of X = 2,280,029.79 and Y = 342,661.85; thence South 11,052.02 feet to a point having Coordinates of X = 2,280,029.79 and Y = 331,609.83; thence West 11,263.43 feet to the point of beginning, containing approximately **59 acres**, all as more particularly outlined on a plat on file in the Office of Mineral Resources, Department of Natural Resources. All bearings, distances and coordinates are based on Louisiana Coordinate System of 1927, (North or South Zone), where applicable.

NOTE: The above description of the Tract nominated for lease has been provided and corrected, where required, exclusively by the nomination party. Any mineral lease selected from this Tract and awarded by the Louisiana State Mineral Board shall be without warranty of any kind, either express, implied, or statutory, including, but not limited to, the implied warranties of merchantability and fitness for a particular purpose. Should the mineral lease awarded by the Louisiana State Mineral Board be subsequently modified, cancelled or abrogated due to the existence of conflicting leases, operating agreements, private claims or other future obligations or conditions which may affect all or any portion of the leased Tract, it shall not relieve the Lessee of the obligation to pay any bonus due thereon to the Louisiana State Mineral Board, nor shall the Louisiana State Mineral Board be obligated to refund any consideration paid by the Lessor prior to such modification, cancellation, or abrogation, including, but not limited to, bonuses, rentals and royalties.

NOTE: The State of Louisiana does hereby reserve, and this lease shall be subject to, the imprescriptible right of surface use in the nature of a servitude in favor of the Department of Natural Resources, including its Offices and Commissions, for the sole purpose of implementing, constructing, servicing and maintaining approved coastal zone management and/or restoration projects. Utilization of any and all rights derived under this lease by the mineral lessee, its agents, successors or assigns, shall not interfere with nor hinder the reasonable surface use by the Department of Natural Resources, its Offices or Commissions, as herein above reserved.

Applicant: RDB RESOURCES

Bidder	Cash Payment	Price/Acre	Rental	Oil	Gas	Other

**Legend**  
08110114  
Active\_Leases  
DOQQ2004

BAYOU LAFOURCHE

BAYOU L'EAU BLEU

P.O.B.

SL 1730



9E

**TRACT 40501 - Lafourche Parish, Louisiana**

All of the lands now or formerly constituting the beds and bottoms of all water bodies of every nature and description as to which title is vested in the State of Louisiana, together with all islands arising therein and other lands formed by accretion or by reliction, where allowed by law, excepting tax adjudicated lands, and not presently under mineral lease on November 12, 2008, situated in Lafourche Parish, Louisiana, and more particularly described as follows: Beginning at a point having Coordinates of X = 2,280,029.79 and Y = 342,661.85; thence East 11,263.43 feet to a point having Coordinates of X = 2,291,293.21 and Y = 342,661.85; thence South 11,052.02 feet to a point having Coordinates of X = 2,291,293.21 and Y = 331,609.83; thence West 11,263.43 feet to a point having Coordinates of X = 2,280,029.79 and Y = 331,609.83; thence North 11,052.02 feet to the point of beginning, containing approximately **59 acres**, all as more particularly outlined on a plat on file in the Office of Mineral Resources, Department of Natural Resources. All bearings, distances and coordinates are based on Louisiana Coordinate System of 1927, (North or South Zone), where applicable.

NOTE: The above description of the Tract nominated for lease has been provided and corrected, where required, exclusively by the nomination party. Any mineral lease selected from this Tract and awarded by the Louisiana State Mineral Board shall be without warranty of any kind, either express, implied, or statutory, including, but not limited to, the implied warranties of merchantability and fitness for a particular purpose. Should the mineral lease awarded by the Louisiana State Mineral Board be subsequently modified, cancelled or abrogated due to the existence of conflicting leases, operating agreements, private claims or other future obligations or conditions which may affect all or any portion of the leased Tract, it shall not relieve the Lessee of the obligation to pay any bonus due thereon to the Louisiana State Mineral Board, nor shall the Louisiana State Mineral Board be obligated to refund any consideration paid by the Lessor prior to such modification, cancellation, or abrogation, including, but not limited to, bonuses, rentals and royalties.

NOTE: The State of Louisiana does hereby reserve, and this lease shall be subject to, the imprescriptible right of surface use in the nature of a servitude in favor of the Department of Natural Resources, including its Offices and Commissions, for the sole purpose of implementing, constructing, servicing and maintaining approved coastal zone management and/or restoration projects. Utilization of any and all rights derived under this lease by the mineral lessee, its agents, successors or assigns, shall not interfere with nor hinder the reasonable surface use by the Department of Natural Resources, its Offices or Commissions, as herein above reserved.



Applicant: RDB RESOURCES

Bidder	Cash Payment	Price/Acre	Rental	Oil	Gas	Other

LAFOURCHE PARISH

T17S - R20E

BAYOU LAFOURCHE

P.O.B.



**TRACT 40502 - Portion of Blocks 29, 30, and 35, Breton Sound Area, Plaquemines Parish, Louisiana**

All of the lands now or formerly constituting the beds and bottoms of all water bodies of every nature and description as to which title is vested in the State of Louisiana, together with all islands arising therein and other lands formed by accretion or by reliction, where allowed by law, excepting tax adjudicated lands, and not presently under mineral lease on November 12, 2008, situated in Plaquemines Parish, Louisiana, and more particularly described as follows: Beginning at the Northeast Corner of Block 35, Breton Sound Area, having Coordinates of X = 2,679,600.00 and Y = 322,330.00; thence South, along the East line of Block 35, Breton Sound Area, for a distance of 2,850.00 feet, to a point on the East line of Block 35, Breton Sound Area, having Coordinates of X = 2,679,600.00 and Y = 319,480.00; thence West, for a distance of 7,500.00 feet to a point on the East boundary of State Lease No. 14561, having Coordinates of X = 2,672,100.00 and Y = 319,480.00; thence along the boundary of said State Lease No. 14561 the following courses: North for a distance of 1,530.00 feet to a point having Coordinates of X = 2,672,100.00 and Y = 321,010.00; thence West for a distance of 2,160.00 feet to a point having Coordinates of X = 2,669,940.00 and Y = 321,010.00; thence North for a distance of 1,320.00 feet to a corner on the North boundary of State Lease No. 14561, said point also being on the North line of Block 35, Breton Sound Area, having Coordinates of X = 2,669,940.00 and Y = 322,330.00; thence North for a distance of 7,375.00 feet to a point having Coordinates of X = 2,669,940.00 and Y = 329,705.00; thence East for a distance of 9,660.00 feet to a point on the East line of Block 30, Breton Sound Area, having Coordinates of X = 2,679,600.00 and Y = 329,705.00; thence East, for a distance of 3,000.00 feet, to a corner on the West boundary of State Lease No. 2000, having Coordinates of X = 2,682,600.00 and Y = 329,705.00, thence along the boundary of State Lease No. 2000 the following courses: South for a distance of 3,000.00 feet to a point having Coordinates of X = 2,682,600.00 and Y = 326,705.00; thence West for a distance of 3,000.00 feet to a point on the East line of Block 30, Breton Sound Area, having Coordinates of X = 2,679,600.00 and Y = 326,705.00; thence South along the East Line of Block 30, Breton Sound Area, for a distance of 4,375.00 feet to the point of beginning, containing approximately **2,398.27 acres**, all as more particularly outlined on a plat on file in the Office of Mineral Resources, Department of Natural Resources. All bearings, distances and coordinates are based on Louisiana Coordinate System of 1927, (North or South Zone), where applicable.

NOTE: The above description of the Tract nominated for lease has been provided and corrected, where required, exclusively by the nomination party. Any mineral lease selected from this Tract and awarded by the Louisiana State Mineral Board shall be without warranty of any kind, either express, implied, or statutory, including, but not limited to, the implied warranties of merchantability and fitness for a particular purpose. Should the mineral lease awarded by the Louisiana State Mineral Board be subsequently modified, cancelled or abrogated due to the

existence of conflicting leases, operating agreements, private claims or other future obligations or conditions which may affect all or any portion of the leased Tract, it shall not relieve the Lessee of the obligation to pay any bonus due thereon to the Louisiana State Mineral Board, nor shall the Louisiana State Mineral Board be obligated to refund any consideration paid by the Lessor prior to such modification, cancellation, or abrogation, including, but not limited to, bonuses, rentals and royalties.




NOTE: The State of Louisiana does hereby reserve, and this lease shall be subject to, the imprescriptible right of surface use in the nature of a servitude in favor of the Department of Natural Resources, including its Offices and Commissions, for the sole purpose of implementing, constructing, servicing and maintaining approved coastal zone management and/or restoration projects. Utilization of any and all rights derived under this lease by the mineral lessee, its agents, successors or assigns, shall not interfere with nor hinder the reasonable surface use by the Department of Natural Resources, its Offices or Commissions, as herein above reserved.

NOTE: It appears, according to our records, that a portion of this Tract is located within the restrictive safety fairway area as set out by the Corps of Engineers, U.S. Army and/or the restrictive anchorage area as set out by the U.S. Coast Guard.

Applicant: SOUTHERN TITLE & ABSTRACT CO., INC.

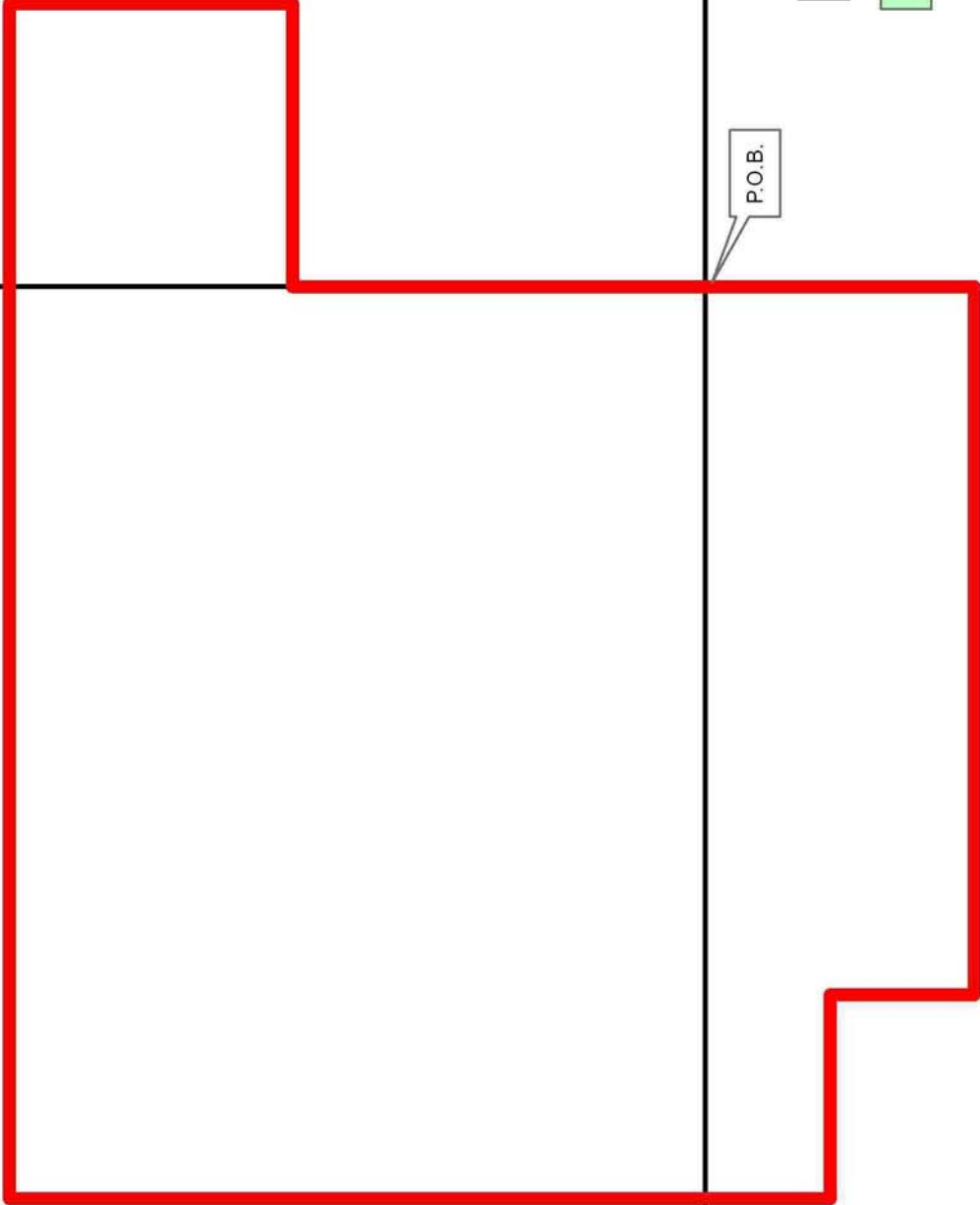
Bidder	Cash Payment	Price/Acre	Rental	Oil	Gas	Other

**Legend**

-  08110106
-  Blocks
-  Active\_Leases



PLAQUEMINES PARISH



BS0029

SL 2000

BS0036

SL 1230

P.O.B.

BS0030

GULF OF MEXICO

BRETON SOUND AREA

BS0035

SL 14561

**TRACT 40503 - Portion of Blocks 35, and 36, Breton Sound Area, Plaquemines Parish, Louisiana**

All of the lands now or formerly constituting the beds and bottoms of all water bodies of every nature and description as to which title is vested in the State of Louisiana, together with all islands arising therein and other lands formed by accretion or by reliction, where allowed by law, excepting tax adjudicated lands, and not presently under mineral lease on November 12, 2008, situated in Plaquemines Parish, Louisiana, and more particularly described as follows: Beginning at the Southeast Corner of Block 35, Breton Sound Area, having Coordinates of X = 2,679,600.00 and Y = 307,580.00; thence North, along the East line of Block 35, Breton Sound Area, for a distance of 1,750.00 feet, to the Northeast corner of State Lease No. 19167, having Coordinates of X = 2,679,600.00 and Y = 309,330.00; thence West, along the North boundary of State Lease No. 19167, for a distance of 4,000.00 feet to a corner on the East boundary of State Lease No. 18340, having Coordinates of X = 2,675,600.00 and Y = 309,330.00; thence along the boundary of said State Lease No. 18340 the following courses: North for a distance of 3,250.00 feet to a point having Coordinates of X = 2,675,600.00 and Y = 312,580.00; thence North 55 degrees 50 minutes 25 seconds West for a distance of 4,229.73 feet to a point on the Easternmost Southeast corner of State Lease No. 14561, having Coordinates of X = 2,672,100.00 and Y = 314,955.00; thence North, along the East boundary of State Lease No. 14561, for a distance of 4,525.00 feet to a point on the East boundary of State Lease No. 14561, having Coordinates of X = 2,672,100.00 and Y = 319,480.00; thence East for a distance of 7,500.00 feet to a point on the East line of Block 35, Breton Sound Area, having Coordinates of X = 2,679,600.00 and Y = 319,480.00; thence South, along the East line of Block 35, Breton Sound Area, for a distance of 2,200.00 feet, to a point on the boundary of State Lease No. 1230, having Coordinates of X = 2,679,600.00 and Y = 317,280.00, thence East, along the boundary of State Lease No. 1230, for a distance of 7,500.00 to a point having Coordinates of X = 2,687,100.00 and Y = 317,280.00; thence along the boundary of said State Lease No. 1230 the following courses: South for a distance of 1,300.00 feet to a point having Coordinates of X = 2,687,100.00 and Y = 315,980.00; thence South 37 degrees 20 minutes 00 seconds West, for a distance of 7,420.24 feet to a point having Coordinates of X = 2,682,600.00 and Y = 310,080.00; thence South 21 degrees 48 minutes 05 seconds West, for a distance of 2,692.58 feet to a point on the South line of Block 36, Breton Sound Area, having Coordinates of X = 2,681,600.00 and Y = 307,580.00; thence West, along the South line of Block 36, Breton Sound Area, for a distance of 2,000.00 feet to the point of beginning, containing approximately **2,469.44 acres**, all as more particularly outlined on a plat on file in the Office of Mineral Resources, Department of Natural Resources. All bearings, distances and coordinates are based on Louisiana Coordinate System of 1927, (North or South Zone), where applicable.

NOTE: The above description of the Tract nominated for lease has been provided and corrected, where required, exclusively by the nomination

party. Any mineral lease selected from this Tract and awarded by the Louisiana State Mineral Board shall be without warranty of any kind, either express, implied, or statutory, including, but not limited to, the implied warranties of merchantability and fitness for a particular purpose. Should the mineral lease awarded by the Louisiana State Mineral Board be subsequently modified, cancelled or abrogated due to the existence of conflicting leases, operating agreements, private claims or other future obligations or conditions which may affect all or any portion of the leased Tract, it shall not relieve the Lessee of the obligation to pay any bonus due thereon to the Louisiana State Mineral Board, nor shall the Louisiana State Mineral Board be obligated to refund any consideration paid by the Lessor prior to such modification, cancellation, or abrogation, including, but not limited to, bonuses, rentals and royalties.




NOTE: The State of Louisiana does hereby reserve, and this lease shall be subject to, the imprescriptible right of surface use in the nature of a servitude in favor of the Department of Natural Resources, including its Offices and Commissions, for the sole purpose of implementing, constructing, servicing and maintaining approved coastal zone management and/or restoration projects. Utilization of any and all rights derived under this lease by the mineral lessee, its agents, successors or assigns, shall not interfere with nor hinder the reasonable surface use by the Department of Natural Resources, its Offices or Commissions, as herein above reserved.

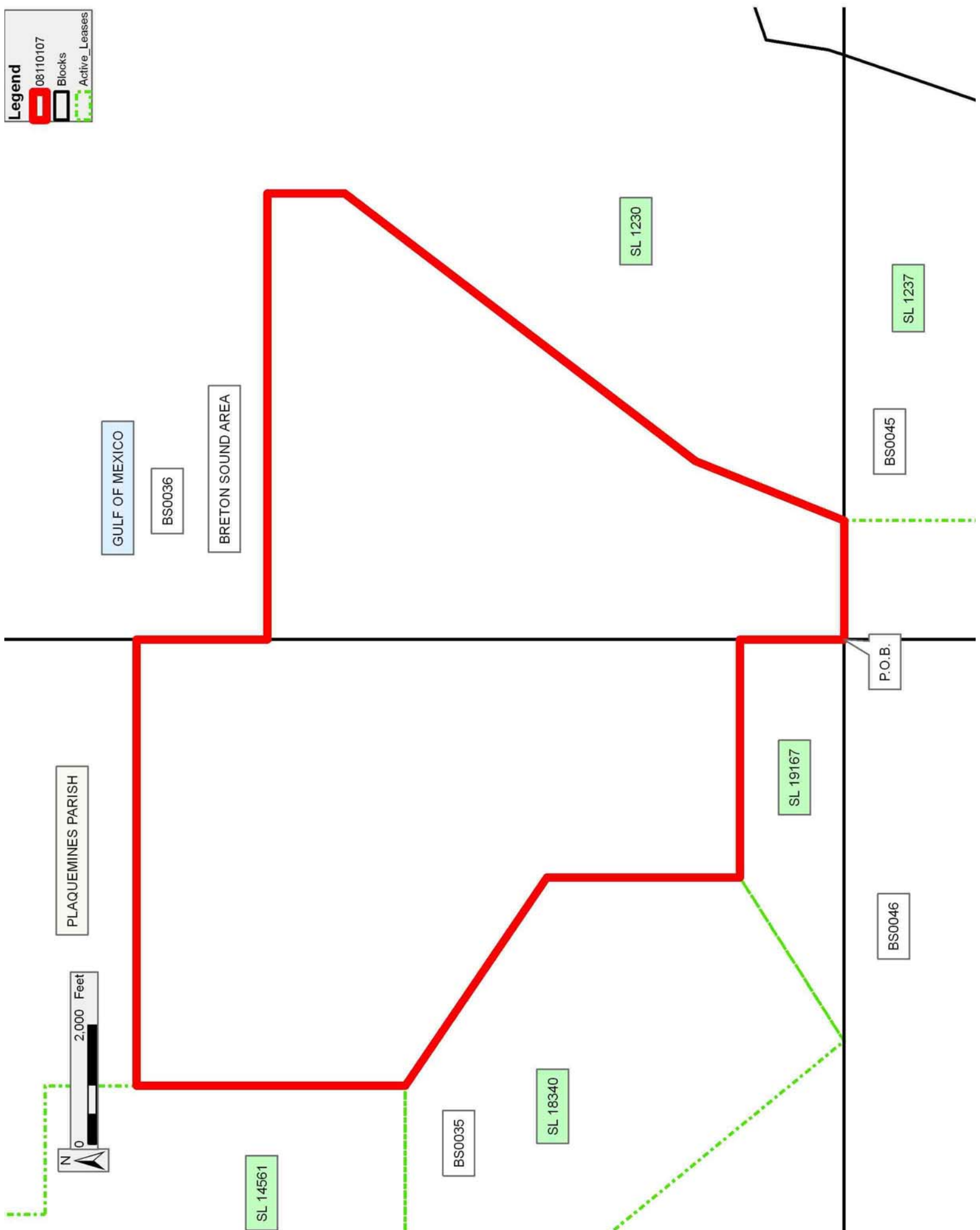
NOTE: It appears, according to our records, that a portion of this Tract is located within the restrictive safety fairway area as set out by the Corps of Engineers, U.S. Army and/or the restrictive anchorage area as set out by the U.S. Coast Guard.

Applicant: SOUTHERN TITLE & ABSTRACT CO., INC.

Bidder	Cash Payment	Price/Acre	Rental	Oil	Gas	Other

**Legend**

-  08110107
-  Blocks
-  Active\_Leases





**TRACT 40504 - Portion of Blocks 35, 45, and 46, Breton Sound Area, Plaquemines Parish, Louisiana**

All of the lands now or formerly constituting the beds and bottoms of all water bodies of every nature and description as to which title is vested in the State of Louisiana, together with all islands arising therein and other lands formed by accretion or by reliction, where allowed by law, excepting tax adjudicated lands, and not presently under mineral lease on November 12, 2008, situated in Plaquemines Parish, Louisiana, and more particularly described as follows: Beginning at the Northeast Corner of Block 46, Breton Sound Area, having Coordinates of X = 2,679,600.00 and Y = 307,580.00; thence East, for a distance of 2,000.00 feet to the Northwest corner of State Lease No. 1237, having Coordinates of X = 2,681,600.00 and Y = 307,580.00; thence South, along the West boundary of State Lease No. 1237, for a distance of 2,400.00 feet to a corner on the North boundary of State Lease No. 19407, having Coordinates of X = 2,681,600.00 and Y = 305,180.00; thence West, along the North boundary of State Lease No. 19407 for a distance of 2,000.00 feet to a point on the East boundary of Block 46, Breton Sound Area, having Coordinates of X = 2,679,600.00 and Y = 305,180.00; thence South, along the East line of Block 46, Breton Sound Area, for a distance of 3,950.00 feet to the most Northeastern corner of State Lease No. 17689, having Coordinates of X = 2,679,600.00 and Y = 301,230.00; thence South 52 degrees 33 minutes 15 seconds West, along the North boundary of State Lease No. 17689, for a distance of 4,038.24 feet to a point on State Lease No. 19079, having Coordinates of X = 2,676,393.93 and Y = 298,774.70; thence North 29 degrees 48 minutes 52 seconds West, along the boundary of State lease No. 19079, for a distance of 717.47 feet, to a point having Coordinates of X = 2,676,037.21 and Y = 299,397.20; thence South 23 degrees 05 minutes 31 seconds West, along the boundary of State Lease No. 19079, for a distance of 2,899.52 feet to a corner on the West boundary of State Lease No. 19079, having Coordinates of X = 2,674,900.00 and Y = 296,730.00; thence West, for a distance of 3,500.00 to a point having Coordinates of X = 2,671,400.00 and Y = 296,730.00; thence North for a distance of 10,850.00 feet to a point on the North line of Block 46, Breton Sound Area, having Coordinates of X = 2,671,400.00 and Y = 307,580.00; thence North, for a distance of 1,766.92 feet to a point on the West boundary of State Lease No. 18340, having Coordinates of X = 2,671,400.00 and Y = 309,346.92; thence South 39 degrees 22 minutes 25 seconds East, along the West boundary of State Lease No. 18340, for a distance of 2,285.72 feet to a point on the North line of Block 46, Breton Sound Area, having Coordinates of X = 2,672,850.00 and Y = 307,580.00; thence East, along the South line of Block 35, Breton Sound Area, for a distance of 6,750.00 feet to the point of beginning, containing approximately **1887.11 acres**, all as more particularly outlined on a plat on file in the Office of Mineral Resources, Department of Natural Resources. All bearings, distances and coordinates are based on Louisiana Coordinate System of 1927, (North or South Zone), where applicable.

NOTE: The above description of the Tract nominated for lease has been provided and corrected, where required, exclusively by the nomination party. Any mineral lease selected from this Tract and awarded by the Louisiana State Mineral Board shall be without warranty of any kind, either express, implied, or statutory, including, but not limited to, the implied warranties of merchantability and fitness for a particular purpose. Should the mineral lease awarded by the Louisiana State Mineral Board be subsequently modified, cancelled or abrogated due to the existence of conflicting leases, operating agreements, private claims or other future obligations or conditions which may affect all or any portion of the leased Tract, it shall not relieve the Lessee of the obligation to pay any bonus due thereon to the Louisiana State Mineral Board, nor shall the Louisiana State Mineral Board be obligated to refund any consideration paid by the Lessor prior to such modification, cancellation, or abrogation, including, but not limited to, bonuses, rentals and royalties.

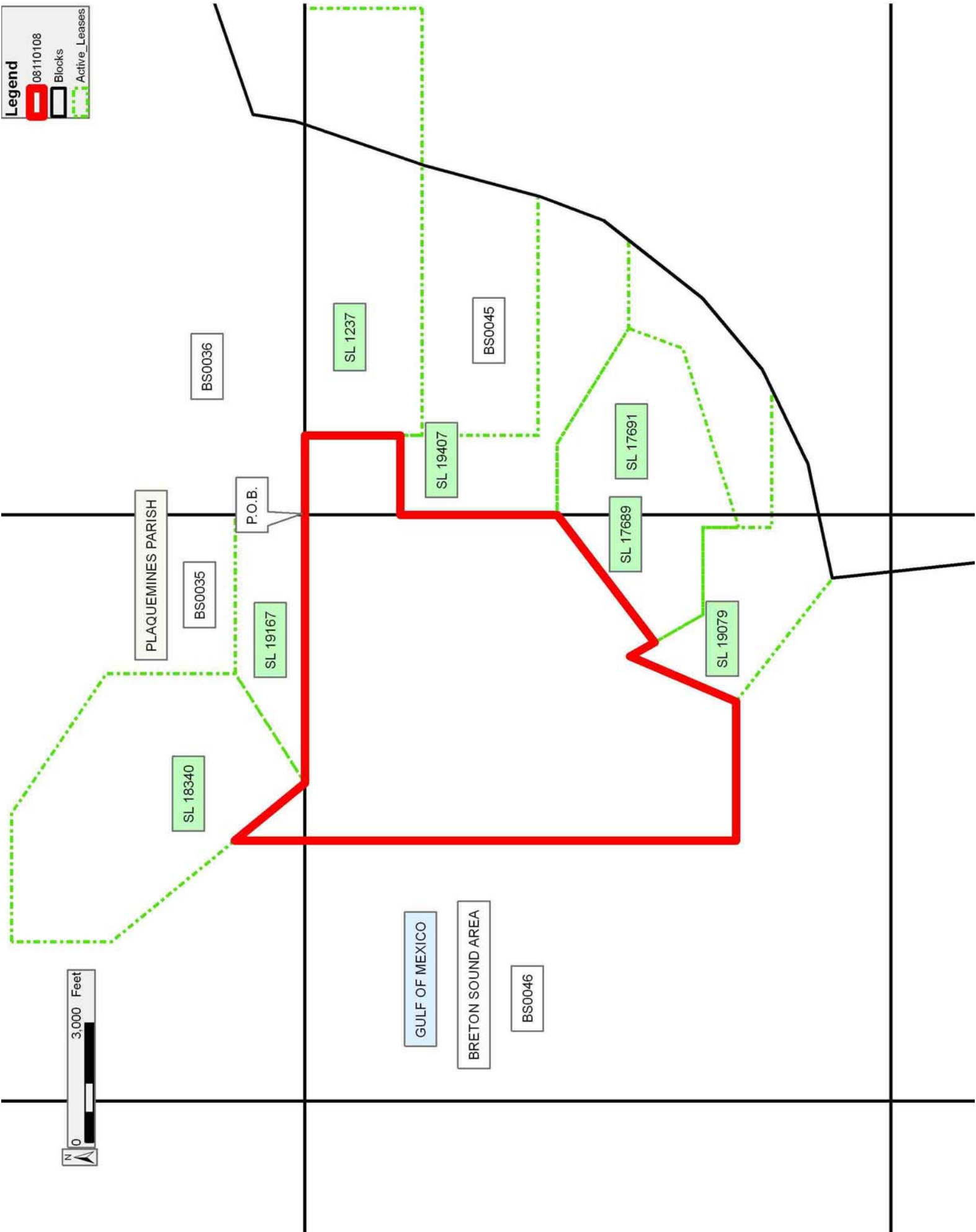
NOTE: The State of Louisiana does hereby reserve, and this lease shall be subject to, the imprescriptible right of surface use in the nature of a servitude in favor of the Department of Natural Resources, including its Offices and Commissions, for the sole purpose of implementing, constructing, servicing and maintaining approved coastal zone management and/or restoration projects. Utilization of any and all rights derived under this lease by the mineral lessee, its agents, successors or assigns, shall not interfere with nor hinder the reasonable surface use by the Department of Natural Resources, its Offices or Commissions, as herein above reserved.

Applicant: SOUTHERN TITLE & ABSTRACT CO., INC.

Bidder	Cash Payment	Price/Acre	Rental	Oil	Gas	Other

**Legend**

- 08110108
- Blocks
- Active\_Leases



**TRACT 40505 - Jefferson and Plaquemines Parishes, Louisiana**

All of the lands now or formerly constituting the beds and bottoms of all water bodies of every nature and description as to which title is vested in the State of Louisiana, together with all islands arising therein and other lands formed by accretion or by reliction, where allowed by law, excepting tax adjudicated lands, and not presently under mineral lease on November 12, 2008, situated in Jefferson and Plaquemines Parishes, Louisiana, and more particularly described as follows: Beginning at a point having Coordinates of X = 2,432,700.00 and Y = 301,303.64; thence West 5,432.00 feet to the Northeast corner of State Lease No. 19379 having Coordinates of X = 2,427,268.00 and Y = 301,303.64; thence South 89 degrees 00 minutes 00 seconds West 191.33 feet along the North boundary of said State Lease No. 19379 to the Southeast corner of State Lease No. 19282 having Coordinates of X = 2,427,076.70 and Y = 301,300.30; thence North 01 degrees 02 minutes 04 seconds West 5,279.16 feet along the East boundary of said State Lease No. 19282 to its Northeast corner having Coordinates of X = 2,426,981.40 and Y = 306,578.60; thence North 321.40 feet to a point having Coordinates of X = 2,426,981.40 and Y = 306,900.00; thence East 5,718.60 feet to a point having Coordinates of X = 2,432,700.00 and Y = 306,900.00; thence South 5,596.36 feet to the point of beginning, (This tract includes only waterbottoms claimed and owned by the state and specifically excludes any land which the state may claim or own and to which the mineral rights are vested in the state), containing approximately **424 acres**, all as more particularly outlined on a plat on file in the Office of Mineral Resources, Department of Natural Resources. All bearings, distances and coordinates are based on Louisiana Coordinate System of 1927, (North or South Zone), where applicable.

NOTE: The above description of the Tract nominated for lease has been provided and corrected, where required, exclusively by the nomination party. Any mineral lease selected from this Tract and awarded by the Louisiana State Mineral Board shall be without warranty of any kind, either express, implied, or statutory, including, but not limited to, the implied warranties of merchantability and fitness for a particular purpose. Should the mineral lease awarded by the Louisiana State Mineral Board be subsequently modified, cancelled or abrogated due to the existence of conflicting leases, operating agreements, private claims or other future obligations or conditions which may affect all or any portion of the leased Tract, it shall not relieve the Lessee of the obligation to pay any bonus due thereon to the Louisiana State Mineral Board, nor shall the Louisiana State Mineral Board be obligated to refund any consideration paid by the Lessor prior to such modification, cancellation, or abrogation, including, but not limited to, bonuses, rentals and royalties.

NOTE: The State of Louisiana does hereby reserve, and this lease shall be subject to, the imprescriptible right of surface use in the nature of a servitude in favor of the Department of Natural Resources, including its Offices and Commissions, for the sole purpose of implementing, constructing, servicing and maintaining approved coastal zone management

and/or restoration projects. Utilization of any and all rights derived under this lease by the mineral lessee, its agents, successors or assigns, shall not interfere with nor hinder the reasonable surface use by the Department of Natural Resources, its Offices or Commissions, as herein above reserved.

NOTE: The Department of Wildlife and Fisheries has designated certain areas in the coastal waters of the State of Louisiana as Oyster Seed Bed Areas. The exact location of those Seed Bed Areas must be obtained from the Department of Wildlife and Fisheries and any work done under a mineral lease from the State of Louisiana may necessarily be conducted in conformity with the rules and regulations promulgated by the said Department of Wildlife and Fisheries for Oyster Seed Bed Areas.

Applicant: HAMMERDRILL EXPLORATION COMPANY

Bidder	Cash Payment	Price/Acre	Rental	Oil	Gas	Other

**Legend**  
08110007  
Active\_Leases  
DOQQ2004

PLAQUEMINES PARISH

JEFFERSON PARISH

P.O.B.

SL 19282

SL 19379

T18S - R24E

