

TRACT 40486 - Iberia Parish, Louisiana

All of the lands now or formerly constituting the beds and bottoms of all water bodies of every nature and description as to which title is vested in the State of Louisiana, together with all islands arising therein and other lands formed by accretion or by reliction, where allowed by law, excepting tax adjudicated lands, and not presently under mineral lease on November 12, 2008, situated in Iberia Parish, Louisiana, and more particularly described as follows: Beginning at a point having Coordinates of X = 1,802,000.00 and Y = 423,000.00; thence East 15,000.00 feet to a point having Coordinates of X = 1,817,000.00 and Y = 423,000.00; thence South 9,958.75 feet to a point having Coordinates of X = 1,817,000.00 and Y = 413,041.25; thence West 15,000.00 feet to a point having Coordinates of X = 1,802,000.00 and Y = 413,041.25; thence North 9,958.75 feet to the point of beginning, containing approximately **2,483 acres**, all as more particularly outlined on a plat on file in the Office of Mineral Resources, Department of Natural Resources. All bearings, distances and coordinates are based on Louisiana Coordinate System of 1927, (North or South Zone), where applicable.

NOTE: The above description of the Tract nominated for lease has been provided and corrected, where required, exclusively by the nomination party. Any mineral lease selected from this Tract and awarded by the Louisiana State Mineral Board shall be without warranty of any kind, either express, implied, or statutory, including, but not limited to, the implied warranties of merchantability and fitness for a particular purpose. Should the mineral lease awarded by the Louisiana State Mineral Board be subsequently modified, cancelled or abrogated due to the existence of conflicting leases, operating agreements, private claims or other future obligations or conditions which may affect all or any portion of the leased Tract, it shall not relieve the Lessee of the obligation to pay any bonus due thereon to the Louisiana State Mineral Board, nor shall the Louisiana State Mineral Board be obligated to refund any consideration paid by the Lessor prior to such modification, cancellation, or abrogation, including, but not limited to, bonuses, rentals and royalties.

NOTE: The Department of Wildlife and Fisheries has designated certain areas in the coastal waters of the State of Louisiana as Oyster Seed Bed Areas. The exact location of those Seed Bed Areas must be obtained from the Department of Wildlife and Fisheries and any work done under a mineral lease from the State of Louisiana may necessarily be conducted in conformity with the rules and regulations promulgated by the said Department of Wildlife and Fisheries for Oyster Seed Bed Areas.

Bidder	Cash Payment	Price/Acre	Rental	Oil	Gas	Other

Applicant: KENTEX ENERGY LLC

IBERIA PARISH

TIGRE LAGOON

P.O.B.

VERMILION BAY



TRACT 40487 - Portion of Block 47, Chandeleur Sound Area, St. Bernard Parish, Louisiana

All of the lands now or formerly constituting the beds and bottoms of all water bodies of every nature and description as to which title is vested in the State of Louisiana, together with all islands arising therein and other lands formed by accretion or by reliction, where allowed by law, excepting tax adjudicated lands, and not presently under mineral lease on November 12, 2008, situated in St. Bernard Parish, Louisiana, and more particularly described as follows: Beginning at the Northwest corner of Block 47, Chandeleur Sound Area, having Coordinates of X = 2,591,100.00 and Y = 410,830.00; thence East 14,750.00 feet along the North line of said Block 47 to its Northeast corner having Coordinates of X = 2,605,850.00 and Y = 410,830.00; thence South 7,375.00 feet along the East line of said Block 47 to a point having Coordinates of X = 2,605,850.00 and Y = 403,455.00; thence West 14,750.00 feet to a point on the West line of said Block 47 having Coordinates of X = 2,591,100.00 and Y = 403,455.00; thence North 7,375.00 feet along the West line of said Block 47 to the point of beginning, containing approximately **1,473 acres**, all as more particularly outlined on a plat on file in the Office of Mineral Resources, Department of Natural Resources. All bearings, distances and coordinates are based on Louisiana Coordinate System of 1927, (North or South Zone), where applicable.

NOTE: The above description of the Tract nominated for lease has been provided and corrected, where required, exclusively by the nomination party. Any mineral lease selected from this Tract and awarded by the Louisiana State Mineral Board shall be without warranty of any kind, either express, implied, or statutory, including, but not limited to, the implied warranties of merchantability and fitness for a particular purpose. Should the mineral lease awarded by the Louisiana State Mineral Board be subsequently modified, cancelled or abrogated due to the existence of conflicting leases, operating agreements, private claims or other future obligations or conditions which may affect all or any portion of the leased Tract, it shall not relieve the Lessee of the obligation to pay any bonus due thereon to the Louisiana State Mineral Board, nor shall the Louisiana State Mineral Board be obligated to refund any consideration paid by the Lessor prior to such modification, cancellation, or abrogation, including, but not limited to, bonuses, rentals and royalties.

NOTE: The Office of Mineral Resources will require a minimum bonus of \$230 per acre and a minimum royalty of 23%.

NOTE: The State of Louisiana does hereby reserve, and this lease shall be subject to, the imprescriptible right of surface use in the nature of a servitude in favor of the Department of Natural Resources, including its Offices and Commissions, for the sole purpose of implementing, constructing, servicing and maintaining approved coastal zone management and/or restoration projects. Utilization of any and all rights derived under this lease by the mineral lessee, its agents, successors or assigns,

shall not interfere with nor hinder the reasonable surface use by the Department of Natural Resources, its Offices or Commissions, as herein above reserved.

NOTE: The Department of Wildlife and Fisheries has designated certain areas in the coastal waters of the State of Louisiana as Oyster Seed Bed Areas. The exact location of those Seed Bed Areas must be obtained from the Department of Wildlife and Fisheries and any work done under a mineral lease from the State of Louisiana may necessarily be conducted in conformity with the rules and regulations promulgated by the said Department of Wildlife and Fisheries for Oyster Seed Bed Areas.

Applicant: MINERAL SERVICES, INC.

Bidder	Cash Payment	Price/Acre	Rental	Oil	Gas	Other

Legend

081110147

DOQQ2004

T15S - R18E

ST BERNARD PARISH

LAKE ELOI

CHANDELEUR SOUND AREA

LAKE ATHANASIO

2,000 Feet



P.O.B.

TRACT 40488 - Iberia Parish, Louisiana

All of the lands now or formerly constituting the beds and bottoms of all water bodies of every nature and description as to which title is vested in the State of Louisiana, together with all islands arising therein and other lands formed by accretion or by reliction, where allowed by law, excepting tax adjudicated lands, and not presently under mineral lease on November 12, 2008, situated in Iberia Parish, Louisiana, and more particularly described as follows: Beginning at a point having Coordinates of X = 1,828,148.00 and Y = 414,737.00; thence East 9,240.00 feet to a point having Coordinates of X = 1,837,388.00 and Y = 414,737.00; thence South 8,856.00 feet to a point having Coordinates of X = 1,837,388.00 and Y = 405,881.00; thence West 9,240.00 feet to a point having Coordinates of X = 1,828,148.00 and Y = 405,881.00; thence North 8,856.00 feet to the point of beginning, (This tract includes only waterbottoms claimed and owned by the state and specifically excludes any land which the state may claim or own and to which the mineral rights are vested in the state), containing approximately **1,792 acres**, all as more particularly outlined on a plat on file in the Office of Mineral Resources, Department of Natural Resources. All bearings, distances and coordinates are based on Louisiana Coordinate System of 1927, (North or South Zone), where applicable.

NOTE: The above description of the Tract nominated for lease has been provided and corrected, where required, exclusively by the nomination party. Any mineral lease selected from this Tract and awarded by the Louisiana State Mineral Board shall be without warranty of any kind, either express, implied, or statutory, including, but not limited to, the implied warranties of merchantability and fitness for a particular purpose. Should the mineral lease awarded by the Louisiana State Mineral Board be subsequently modified, cancelled or abrogated due to the existence of conflicting leases, operating agreements, private claims or other future obligations or conditions which may affect all or any portion of the leased Tract, it shall not relieve the Lessee of the obligation to pay any bonus due thereon to the Louisiana State Mineral Board, nor shall the Louisiana State Mineral Board be obligated to refund any consideration paid by the Lessor prior to such modification, cancellation, or abrogation, including, but not limited to, bonuses, rentals and royalties.

NOTE: The State of Louisiana does hereby reserve, and this lease shall be subject to, the imprescriptible right of surface use in the nature of a servitude in favor of the Department of Natural Resources, including its Offices and Commissions, for the sole purpose of implementing, constructing, servicing and maintaining approved coastal zone management and/or restoration projects. Utilization of any and all rights derived under this lease by the mineral lessee, its agents, successors or assigns, shall not interfere with nor hinder the reasonable surface use by the Department of Natural Resources, its Offices or Commissions, as herein above reserved.

NOTE: The Department of Wildlife and Fisheries has designated certain areas in the coastal waters of the State of Louisiana as Oyster Seed Bed Areas. The exact location of those Seed Bed Areas must be obtained from the Department of Wildlife and Fisheries and any work done under a mineral lease from the State of Louisiana may necessarily be conducted in conformity with the rules and regulations promulgated by the said Department of Wildlife and Fisheries for Oyster Seed Bed Areas.

Applicant: HAROLD J. ANDERSON, INC.

Bidder	Cash Payment	Price/Acre	Rental	Oil	Gas	Other



IBERIA PARISH

VERMILION BAY

P.O.B.



T14S - R6E

TRACT 40489 - Iberia Parish, Louisiana

All of the lands now or formerly constituting the beds and bottoms of all water bodies of every nature and description as to which title is vested in the State of Louisiana, together with all islands arising therein and other lands formed by accretion or by reliction, where allowed by law, excepting tax adjudicated lands, and not presently under mineral lease on November 12, 2008, situated in Iberia Parish, Louisiana, and more particularly described as follows: Beginning at a point having Coordinates of X = 1,837,388.00 and Y = 414,737.00; thence East 5,228.33 feet to a point on the Western boundary of the Northern portion of State Lease No. 743, as amended, having Coordinates of X = 1,842,616.33 and Y = 414,737.00; thence along the boundary of said portion of State Lease No. 743 the following courses: South 02 degrees 14 minutes 37 seconds East 1,486.61 feet, East 1,995.47 feet, North 67 degrees 20 minutes 48 seconds East 13.49 feet, North 36 degrees 19 minutes 37 seconds West 12.41 feet, North 12 degrees 26 minutes 22 seconds West 69.64 feet, North 02 degrees 25 minutes 35 seconds East 118.11 feet, North 14 degrees 44 minutes 37 seconds East 117.89 feet, North 14 degrees 44 minutes 37 seconds West 39.30 feet, North 44 degrees 12 minutes 55 seconds West 51.63 feet, North 30 degrees 12 minutes 12 seconds West 77.53 feet, North 11 degrees 42 minutes 45 seconds West 83.75 feet, North 26 degrees 44 minutes 43 seconds West 142.22 feet, North 14 degrees 49 minutes 35 seconds West 35.18 feet, North 03 degrees 52 minutes 43 seconds West 59.14 feet, North 49 degrees 11 minutes 06 seconds West 87.21 feet, North 37 degrees 43 minutes 59 seconds West 33.72 feet, North 37 degrees 43 minutes 59 seconds West 72.50 feet, North 03 degrees 48 minutes 51 seconds West 30.07 feet, North 37 degrees 31 minutes 09 seconds West 70.61 feet, North 50 degrees 11 minutes 40 seconds West 39.06 feet, North 32 degrees 52 minutes 07 seconds West 77.39 feet, North 58 degrees 54 minutes 45 seconds West 79.41 feet, North 42 degrees 52 minutes 44 seconds West 95.53 feet, North 64 degrees 58 minutes 59 seconds West 33.11 feet, North 27 degrees 33 minutes 10 seconds West 77.83 feet, North 60 degrees 37 minutes 27 seconds West 173.29 feet, North 39 degrees 19 minutes 09 seconds West 135.73 feet and North 53 degrees 32 minutes 34 seconds West 42.36 feet to a point on its Eastern boundary having Coordinates of X = 1,843,797.97 and Y = 414,737.00; thence East approximately 2,230 feet to a point on the Western boundary of State Lease No. 500, as amended, having a Coordinate of Y = 414,737.00; thence along the meanders of the boundary of said State Lease No. 500 the following: Southeasterly, Easterly, Southwesterly, Southerly, Easterly and Southerly to a point of intersection with an East-West Line having a Coordinate of Y = 405,881.00; thence West approximately 15,403 feet along said line to a point having Coordinates of X = 1,837,388.00 and Y = 405,881.00; thence North 8,856.00 feet to the point of beginning, **LESS AND EXCEPT** the southern portion of State Lease No. 743, as amended, that lies within the above described tract, said portion being more particularly described as follows: Commencing at the point of beginning of the above described tract having Coordinates of X = 1,837,388.00 and Y = 414,737.00; thence South 73 degrees 35 minutes 54 seconds East 7,746.36 feet to a point on the boundary of said State Lease No. 743 having Coordinates of X

= 1,844,819.13 and Y = 412,549.67; thence along the boundary of said portion of State Lease No. 743 the following courses: North 40 degrees 54 minutes 52 seconds East 59.55 feet, South 72 degrees 13 minutes 43 seconds East 81.91 feet, South 43 degrees 15 minutes 51 seconds East 61.59 feet, South 63 degrees 21 minutes 41 seconds West 139.91 feet and North 21 degrees 18 minutes 13 seconds West 94.00 feet to the point of beginning of said portion of State Lease No. 743, **ALSO LESS AND EXCEPT** that portion if any, of State Lease No. 500, as amended, that may lie within the above described tract, (This tract includes only waterbottoms claimed and owned by the state and specifically excludes any land which the state may claim or own and to which the mineral rights are vested in the state), containing approximately **1,411 acres**, all as more particularly outlined on a plat on file in the Office of Mineral Resources, Department of Natural Resources. All bearings, distances and coordinates are based on Louisiana Coordinate System of 1927, (North or South Zone), where applicable.

NOTE: The above description of the Tract nominated for lease has been provided and corrected, where required, exclusively by the nomination party. Any mineral lease selected from this Tract and awarded by the Louisiana State Mineral Board shall be without warranty of any kind, either express, implied, or statutory, including, but not limited to, the implied warranties of merchantability and fitness for a particular purpose. Should the mineral lease awarded by the Louisiana State Mineral Board be subsequently modified, cancelled or abrogated due to the existence of conflicting leases, operating agreements, private claims or other future obligations or conditions which may affect all or any portion of the leased Tract, it shall not relieve the Lessee of the obligation to pay any bonus due thereon to the Louisiana State Mineral Board, nor shall the Louisiana State Mineral Board be obligated to refund any consideration paid by the Lessor prior to such modification, cancellation, or abrogation, including, but not limited to, bonuses, rentals and royalties.

NOTE: The State of Louisiana does hereby reserve, and this lease shall be subject to, the imprescriptible right of surface use in the nature of a servitude in favor of the Department of Natural Resources, including its Offices and Commissions, for the sole purpose of implementing, constructing, servicing and maintaining approved coastal zone management and/or restoration projects. Utilization of any and all rights derived under this lease by the mineral lessee, its agents, successors or assigns, shall not interfere with nor hinder the reasonable surface use by the Department of Natural Resources, its Offices or Commissions, as herein above reserved.

NOTE: The Department of Wildlife and Fisheries has designated certain areas in the coastal waters of the State of Louisiana as Oyster Seed Bed Areas. The exact location of those Seed Bed Areas must be obtained from the Department of Wildlife and Fisheries and any work done under a mineral lease from the State of Louisiana may necessarily be conducted in

conformity with the rules and regulations promulgated by the said Department of Wildlife and Fisheries for Oyster Seed Bed Areas.

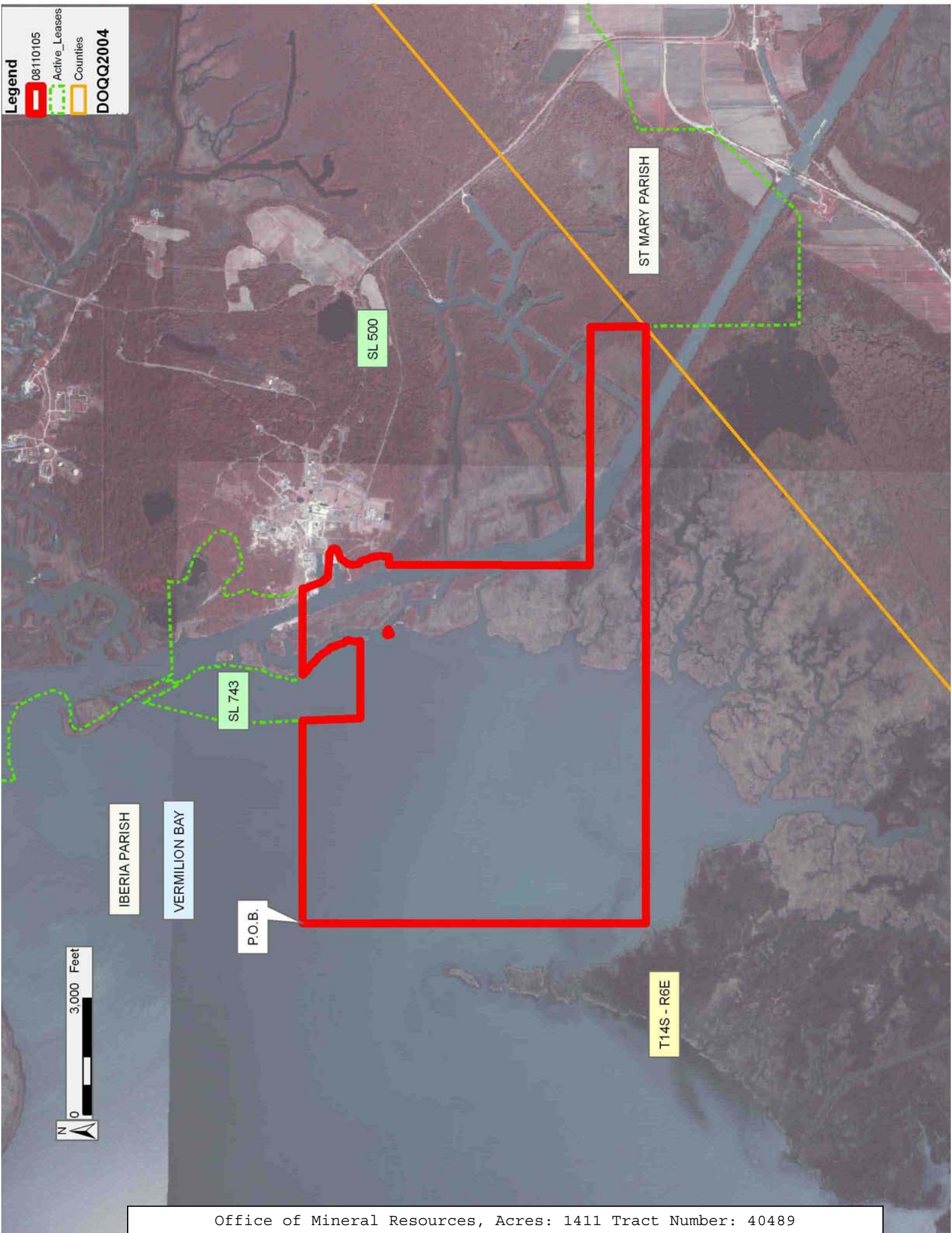
Applicant: HAROLD J. ANDERSON, INC.

Bidder	Cash Payment	Price/Acre	Rental	Oil	Gas	Other

Legend

- 08110105
- Active_Leases
- Counties

DOQQ2004



TRACT 40490 - Portion of Block 47, Chandeleur Sound Area, St. Bernard Parish, Louisiana

All of the lands now or formerly constituting the beds and bottoms of all water bodies of every nature and description as to which title is vested in the State of Louisiana, together with all islands arising therein and other lands formed by accretion or by reliction, where allowed by law, excepting tax adjudicated lands, and not presently under mineral lease on November 12, 2008, situated in St. Bernard Parish, Louisiana, and more particularly described as follows: Beginning at a point on the West line of Block 47, Chandeleur Sound Area, having Coordinates of X = 2,591,100.00 and Y = 403,455.00; thence East 14,750.00 feet to a point on the East line of said Block 47 having Coordinates of X = 2,605,850.00 and Y = 403,455.00; thence South 1,455.00 feet along the East line of said Block 47 to the Northeast corner of State Lease No. 4039, as amended having Coordinates of X = 2,605,850.00 and Y = 402,000.00; thence along the boundary of said State Lease No. 4039 the following courses: West 7,375.00 feet and South 5,920.00 feet to its Southwest corner, also being a point on the South line of said Block 47 having Coordinates of X = 2,598,475.00 and Y = 396,080.00; thence West 7,375.00 feet along the South line of said Block 47 to its Southwest corner having Coordinates of X = 2,591,100.00 and Y = 396,080.00; thence North 3,705.00 feet along the West line of said Block 47 to the Southwest corner of State Lease No. 19563 having Coordinates of X = 2,591,100.00 and Y = 399,785.00; thence along the boundary of said State Lease No. 19563 the following courses: North 68 degrees 11 minutes 55 seconds East 2,692.58 feet, North 1,805.00 feet and West 2,500.00 feet to its Northwest corner, also being a point on the West Line of said Block 47 having Coordinates of X = 2,591,100.00 and Y = 402,590.00; thence North 865.00 feet along the West Line of said Block 47 to the point of beginning, containing approximately **1,085 acres**, all as more particularly outlined on a plat on file in the Office of Mineral Resources, Department of Natural Resources. All bearings, distances and coordinates are based on Louisiana Coordinate System of 1927, (North or South Zone), where applicable.

NOTE: The above description of the Tract nominated for lease has been provided and corrected, where required, exclusively by the nomination party. Any mineral lease selected from this Tract and awarded by the Louisiana State Mineral Board shall be without warranty of any kind, either express, implied, or statutory, including, but not limited to, the implied warranties of merchantability and fitness for a particular purpose. Should the mineral lease awarded by the Louisiana State Mineral Board be subsequently modified, cancelled or abrogated due to the existence of conflicting leases, operating agreements, private claims or other future obligations or conditions which may affect all or any portion of the leased Tract, it shall not relieve the Lessee of the obligation to pay any bonus due thereon to the Louisiana State Mineral Board, nor shall the Louisiana State Mineral Board be obligated to refund any consideration paid by the Lessor prior to such modification, cancellation, or abrogation, including, but not limited to, bonuses, rentals and royalties.

NOTE: The State of Louisiana does hereby reserve, and this lease shall be subject to, the imprescriptible right of surface use in the nature of a servitude in favor of the Department of Natural Resources, including its Offices and Commissions, for the sole purpose of implementing, constructing, servicing and maintaining approved coastal zone management and/or restoration projects. Utilization of any and all rights derived under this lease by the mineral lessee, its agents, successors or assigns, shall not interfere with nor hinder the reasonable surface use by the Department of Natural Resources, its Offices or Commissions, as herein above reserved.

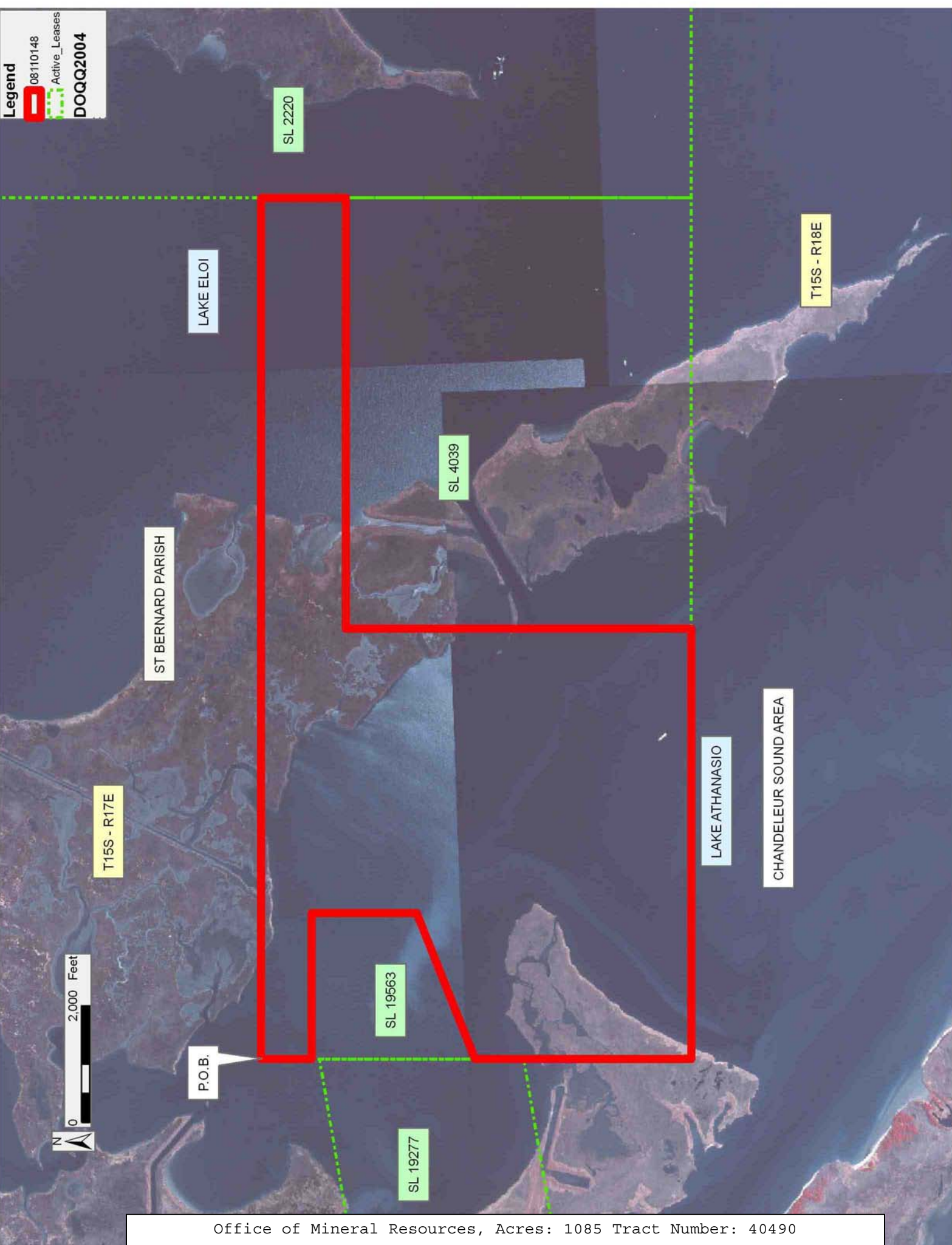
NOTE: The Department of Wildlife and Fisheries has designated certain areas in the coastal waters of the State of Louisiana as Oyster Seed Bed Areas. The exact location of those Seed Bed Areas must be obtained from the Department of Wildlife and Fisheries and any work done under a mineral lease from the State of Louisiana may necessarily be conducted in conformity with the rules and regulations promulgated by the said Department of Wildlife and Fisheries for Oyster Seed Bed Areas.

Applicant: MINERAL SERVICES, INC.

Bidder	Cash Payment	Price/Acre	Rental	Oil	Gas	Other

Legend

- 08110148
- Active_Leases
- DOQQ2004



TRACT 40491 - Jefferson and St. Charles Parishes, Louisiana

All of the lands now or formerly constituting the beds and bottoms of all water bodies of every nature and description as to which title is vested in the State of Louisiana, together with all islands arising therein and other lands formed by accretion or by reliction, where allowed by law, excepting tax adjudicated lands, and not presently under mineral lease on November 12, 2008, situated in Jefferson and St. Charles Parishes, Louisiana, and more particularly described as follows: Beginning at a point having Coordinates of X = 2,356,992.00 and Y = 395,435.00; thence East 7,963.00 feet to a point having Coordinates of X = 2,364,955.00 and Y = 395,435.00; thence South 15,935.00 feet to a point having Coordinates of X = 2,364,955.00 and Y = 379,500.00; thence West 4,455.00 feet to the Southeast corner of State Lease No. 19198 having Coordinates of X = 2,360,500.00 and Y = 379,500.00; thence North 31 degrees 03 minutes 06 seconds West 6,800.95 feet along the Eastern boundary of said State Lease No. 19198 to a point having Coordinates of X = 2,356,992.00 and Y = 385,326.40; thence North 10,108.60 feet to the point of beginning, containing approximately **2,207 acres**, all as more particularly outlined on a plat on file in the Office of Mineral Resources, Department of Natural Resources. All bearings, distances and coordinates are based on Louisiana Coordinate System of 1927, (North or South Zone), where applicable.

NOTE: The above description of the Tract nominated for lease has been provided and corrected, where required, exclusively by the nomination party. Any mineral lease selected from this Tract and awarded by the Louisiana State Mineral Board shall be without warranty of any kind, either express, implied, or statutory, including, but not limited to, the implied warranties of merchantability and fitness for a particular purpose. Should the mineral lease awarded by the Louisiana State Mineral Board be subsequently modified, cancelled or abrogated due to the existence of conflicting leases, operating agreements, private claims or other future obligations or conditions which may affect all or any portion of the leased Tract, it shall not relieve the Lessee of the obligation to pay any bonus due thereon to the Louisiana State Mineral Board, nor shall the Louisiana State Mineral Board be obligated to refund any consideration paid by the Lessor prior to such modification, cancellation, or abrogation, including, but not limited to, bonuses, rentals and royalties.

NOTE: The State of Louisiana does hereby reserve, and this lease shall be subject to, the imprescriptible right of surface use in the nature of a servitude in favor of the Department of Natural Resources, including its Offices and Commissions, for the sole purpose of implementing, constructing, servicing and maintaining approved coastal zone management and/or restoration projects. Utilization of any and all rights derived under this lease by the mineral lessee, its agents, successors or assigns, shall not interfere with nor hinder the reasonable surface use by the Department of Natural Resources, its Offices or Commissions, as herein above reserved.

Applicant: HARPER PETROLEUM COMPANY, INC.

Bidder	Cash Payment	Price/Acre	Rental	Oil	Gas	Other

Legend

- 08110096
- Active_Leases
- Counties

DOQQ2004

JEFFERSON PARISH

T16S - R23E



SL 19198

P.O.B.

ST CHARLES PARISH

LAKE SALVADOR



TRACT 40492 - Jefferson Parish, Louisiana

All of the lands now or formerly constituting the beds and bottoms of all water bodies of every nature and description as to which title is vested in the State of Louisiana, together with all islands arising therein and other lands formed by accretion or by reliction, where allowed by law, excepting tax adjudicated lands, and not presently under mineral lease on November 12, 2008, situated in Jefferson Parish, Louisiana, and more particularly described as follows: Beginning at a point having Coordinates of X = 2,364,955.00 and Y = 395,435.00; thence East 7,774.00 feet to a point having Coordinates of X = 2,372,729.00 and Y = 395,435.00; thence South 15,935.00 feet to a point having Coordinates of X = 2,372,729.00 and Y = 379,500.00; thence West 7,774.00 feet to a point having Coordinates of X = 2,364,955.00 and Y = 379,500.00; thence North 15,935.00 feet to the point of beginning, containing approximately **1,245 acres**, all as more particularly outlined on a plat on file in the Office of Mineral Resources, Department of Natural Resources. All bearings, distances and coordinates are based on Louisiana Coordinate System of 1927, (North or South Zone), where applicable.

NOTE: The above description of the Tract nominated for lease has been provided and corrected, where required, exclusively by the nomination party. Any mineral lease selected from this Tract and awarded by the Louisiana State Mineral Board shall be without warranty of any kind, either express, implied, or statutory, including, but not limited to, the implied warranties of merchantability and fitness for a particular purpose. Should the mineral lease awarded by the Louisiana State Mineral Board be subsequently modified, cancelled or abrogated due to the existence of conflicting leases, operating agreements, private claims or other future obligations or conditions which may affect all or any portion of the leased Tract, it shall not relieve the Lessee of the obligation to pay any bonus due thereon to the Louisiana State Mineral Board, nor shall the Louisiana State Mineral Board be obligated to refund any consideration paid by the Lessor prior to such modification, cancellation, or abrogation, including, but not limited to, bonuses, rentals and royalties.

NOTE: The State of Louisiana does hereby reserve, and this lease shall be subject to, the imprescriptible right of surface use in the nature of a servitude in favor of the Department of Natural Resources, including its Offices and Commissions, for the sole purpose of implementing, constructing, servicing and maintaining approved coastal zone management and/or restoration projects. Utilization of any and all rights derived under this lease by the mineral lessee, its agents, successors or assigns, shall not interfere with nor hinder the reasonable surface use by the Department of Natural Resources, its Offices or Commissions, as herein above reserved.

Applicant: HARPER PETROLEUM COMPANY, INC.

Bidder	Cash Payment	Price/Acre	Rental	Oil	Gas	Other

JEFFERSON PARISH

T15S - R23E

P.O.B.

T16S - R23E

LAKE SALVADOR



TRACT 40493 - St. Charles Parish, Louisiana

All of the lands now or formerly constituting the beds and bottoms of all water bodies of every nature and description as to which title is vested in the State of Louisiana, together with all islands arising therein and other lands formed by accretion or by reliction, where allowed by law, excepting tax adjudicated lands, and not presently under mineral lease on November 12, 2008, situated in St. Charles Parish, Louisiana, and more particularly described as follows: Beginning at a point having Coordinates of X = 2,338,135.00 and Y = 391,335.00; thence East 1,476.00 feet to a point having Coordinates of X = 2,339,611.00 and Y = 391,335.00; thence North 41 degrees 35 minutes 34 seconds East 2,807.93 feet to a point having Coordinates of X = 2,341,475.00 and Y = 393,435.00; thence East 6,850.00 feet to a point having Coordinates of X = 2,348,325.00 and Y = 393,435.00; thence South 15,185.00 feet to a point having Coordinates of X = 2,348,325.00 and Y = 378,250.00; thence West 2,815.00 feet to a point on the Eastern boundary of State Lease No. 19232 having Coordinates of X = 2,345,510.00 and Y = 378,250.00; thence North 2,672.61 feet along said State Lease No. 19232 to the Southeast corner of State Lease No. 19204 having Coordinates of X = 2,345,510.00 and Y = 380,922.61; thence North 1,023.13 feet along the Eastern boundary of said State Lease No. 19204 to its Northeast corner, also being the Southeast corner of State Lease No. 19203 to a point having Coordinates of X = 2,345,510.00 and Y = 381,945.74; thence North 1,807.05 feet along the Eastern boundary of said State Lease No. 19203 to its Northeast corner, also being a point on the boundary of said State Lease No. 19232 having Coordinates of X = 2,345,510.00 and Y = 383,752.79; thence along the boundary of said State Lease No. 19232 the following courses: North 1,355.21 feet and West 6,418.50 feet to the Eastern corner of State Lease No. 19207 having Coordinates of X = 2,339,091.50 and Y = 385,108.00; thence West 956.50 feet along the North boundary of said State Lease No. 19207 to its Northwest corner, also being the Northeast corner of State Lease No. 19199 having Coordinates of X = 2,338,135.00 and Y = 385,108.00; thence North 6,227.00 feet to the point of beginning, containing approximately **2,275.04 acres**, all as more particularly outlined on a plat on file in the Office of Mineral Resources, Department of Natural Resources. All bearings, distances and coordinates are based on Louisiana Coordinate System of 1927, (North or South Zone), where applicable.

NOTE: The above description of the Tract nominated for lease has been provided and corrected, where required, exclusively by the nomination party. Any mineral lease selected from this Tract and awarded by the Louisiana State Mineral Board shall be without warranty of any kind, either express, implied, or statutory, including, but not limited to, the implied warranties of merchantability and fitness for a particular purpose. Should the mineral lease awarded by the Louisiana State Mineral Board be subsequently modified, cancelled or abrogated due to the existence of conflicting leases, operating agreements, private claims or other future obligations or conditions which may affect all or any portion of the leased Tract, it shall not relieve the Lessee of the obligation to

pay any bonus due thereon to the Louisiana State Mineral Board, nor shall the Louisiana State Mineral Board be obligated to refund any consideration paid by the Lessor prior to such modification, cancellation, or abrogation, including, but not limited to, bonuses, rentals and royalties.

NOTE: The State of Louisiana does hereby reserve, and this lease shall be subject to, the imprescriptible right of surface use in the nature of a servitude in favor of the Department of Natural Resources, including its Offices and Commissions, for the sole purpose of implementing, constructing, servicing and maintaining approved coastal zone management and/or restoration projects. Utilization of any and all rights derived under this lease by the mineral lessee, its agents, successors or assigns, shall not interfere with nor hinder the reasonable surface use by the Department of Natural Resources, its Offices or Commissions, as herein above reserved.

Applicant: HARPER PETROLEUM COMPANY, INC.

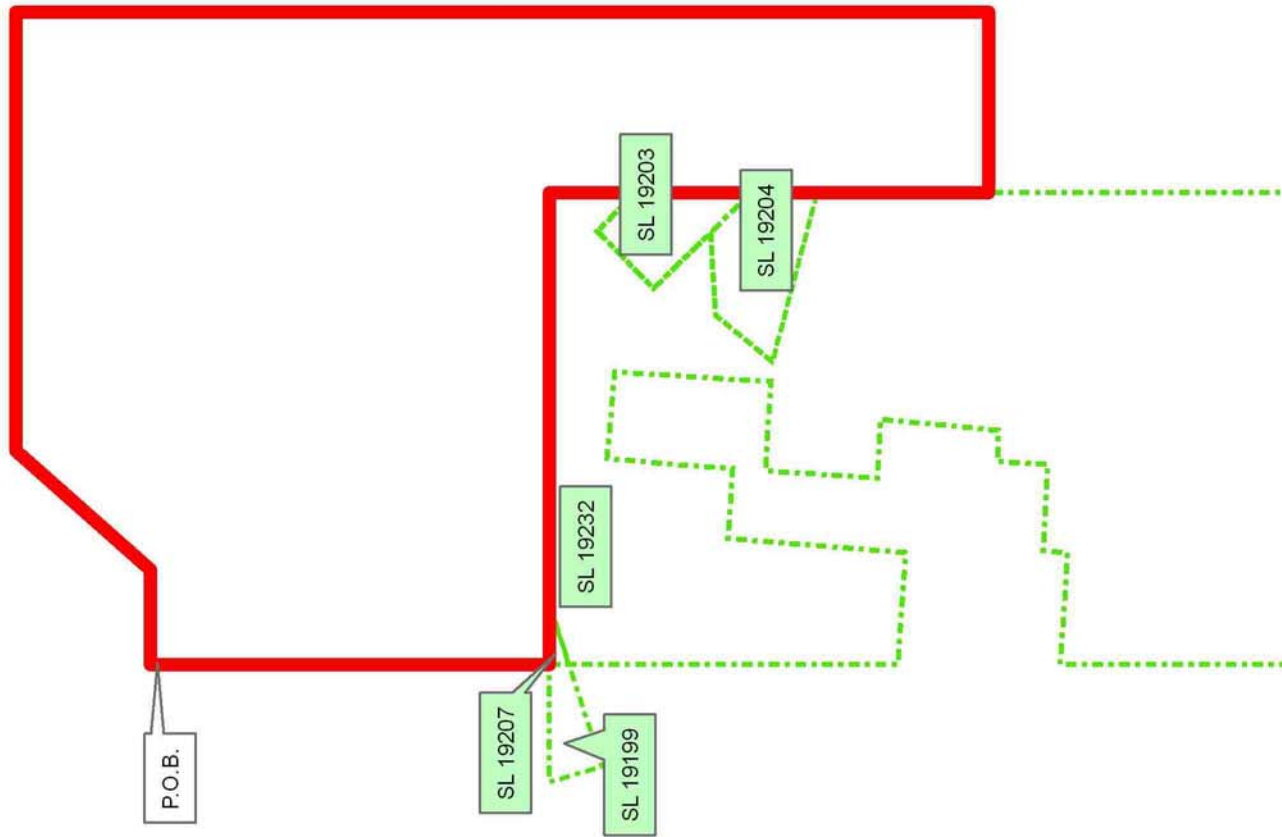
Bidder	Cash Payment	Price/Acre	Rental	Oil	Gas	Other

Legend

- 08110094
- Active_Leases

ST CHARLES PARISH

LAKE SALVADOR



TRACT 40494 - Jefferson and St. Charles Parishes, Louisiana

All of the lands now or formerly constituting the beds and bottoms of all water bodies of every nature and description as to which title is vested in the State of Louisiana, together with all islands arising therein and other lands formed by accretion or by reliction, where allowed by law, excepting tax adjudicated lands, and not presently under mineral lease on November 12, 2008, situated in Jefferson and St. Charles Parishes, Louisiana, and more particularly described as follows: Beginning at a point having Coordinates of X = 2,348,325.00 and Y = 393,435.00; thence East 8,667.00 feet to a point having Coordinates of X = 2,356,992.00 and Y = 393,435.00; thence South 8,108.60 feet to a point on the boundary of State Lease No. 19198 having Coordinates of X = 2,356,992.00 and Y = 385,326.40; thence along the boundary of said State Lease No. 19198 the following courses: North 31 degrees 03 minutes 06 seconds West 2,146.14 feet, West 3,000.00 feet, South 2,655.00 feet and South 33 degrees 19 minutes 08 seconds East 7,491.38 feet to its Southwest corner having Coordinates of X = 2,357,000.00 and Y = 378,250.00; thence West 8,675.00 feet to a point having Coordinates of X = 2,348,325.00 and Y = 378,250.00; thence North 15,185.00 feet to the point of beginning, containing approximately **2,499.82 acres**, all as more particularly outlined on a plat on file in the Office of Mineral Resources, Department of Natural Resources. All bearings, distances and coordinates are based on Louisiana Coordinate System of 1927, (North or South Zone), where applicable.

NOTE: The above description of the Tract nominated for lease has been provided and corrected, where required, exclusively by the nomination party. Any mineral lease selected from this Tract and awarded by the Louisiana State Mineral Board shall be without warranty of any kind, either express, implied, or statutory, including, but not limited to, the implied warranties of merchantability and fitness for a particular purpose. Should the mineral lease awarded by the Louisiana State Mineral Board be subsequently modified, cancelled or abrogated due to the existence of conflicting leases, operating agreements, private claims or other future obligations or conditions which may affect all or any portion of the leased Tract, it shall not relieve the Lessee of the obligation to pay any bonus due thereon to the Louisiana State Mineral Board, nor shall the Louisiana State Mineral Board be obligated to refund any consideration paid by the Lessor prior to such modification, cancellation, or abrogation, including, but not limited to, bonuses, rentals and royalties.

NOTE: The State of Louisiana does hereby reserve, and this lease shall be subject to, the imprescriptible right of surface use in the nature of a servitude in favor of the Department of Natural Resources, including its Offices and Commissions, for the sole purpose of implementing, constructing, servicing and maintaining approved coastal zone management and/or restoration projects. Utilization of any and all rights derived under this lease by the mineral lessee, its agents, successors or assigns, shall not interfere with nor hinder the reasonable surface use by the

Department of Natural Resources, its Offices or Commissions, as herein above reserved.

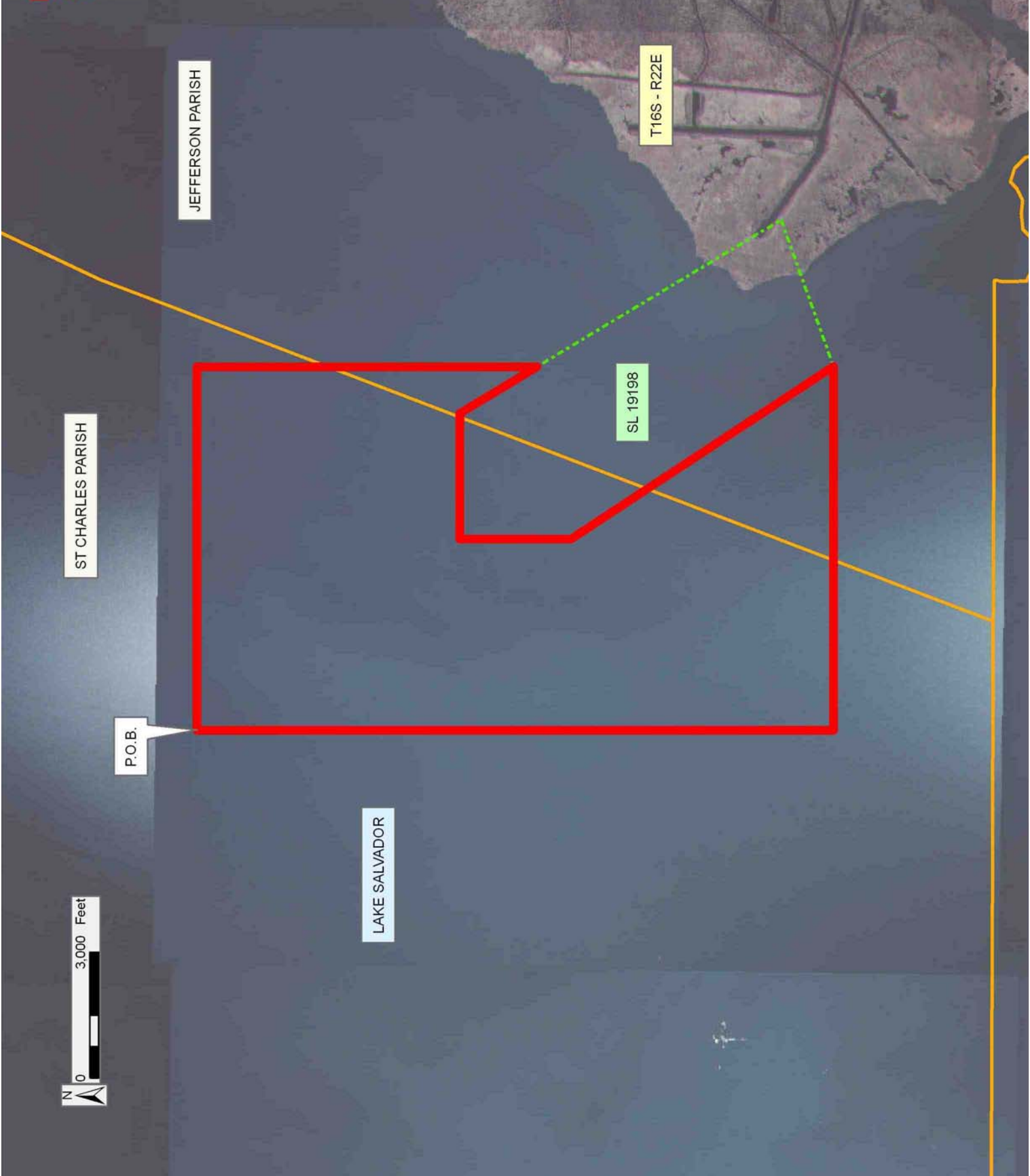
Applicant: HARPER PETROLEUM COMPANY, INC.

Bidder	Cash Payment	Price/Acre	Rental	Oil	Gas	Other

Legend

-  08110095
-  Active_Leases
-  Counties

DOQQ2004



TRACT 40495 - Jefferson and Lafourche Parishes, Louisiana

All of the lands now or formerly constituting the beds and bottoms of all water bodies of every nature and description as to which title is vested in the State of Louisiana, together with all islands arising therein and other lands formed by accretion or by reliction, where allowed by law, excepting tax adjudicated lands, and not presently under mineral lease on November 12, 2008, situated in Jefferson and Lafourche Parishes, Louisiana, and more particularly described as follows: Beginning at a point having Coordinates of X = 2,353,585.00 and Y = 378,250.00; thence East 3,415.00 feet to the Southwest corner of State Lease No. 19198 having Coordinates of X = 2,357,000.00 and Y = 378,250.00; thence North 70 degrees 20 minutes 46 seconds East 3,716.52 feet along the Southern boundary of said State Lease No. 19198 to its Southeast corner having Coordinates of X = 2,360,500.00 and Y = 379,500.00; thence East 2,360.00 feet to a point having Coordinates of X = 2,362,860.00 and Y = 379,500.00; thence South 18,480.00 feet to a point having Coordinates of X = 2,362,860.00 and Y = 361,020.00; thence West 9,275.00 feet to a point having Coordinates of X = 2,353,585.00 and Y = 361,020.00; thence North 17,230.00 feet to the point of beginning, containing approximately **1,870 acres**, all as more particularly outlined on a plat on file in the Office of Mineral Resources, Department of Natural Resources. All bearings, distances and coordinates are based on Louisiana Coordinate System of 1927, (North or South Zone), where applicable.

NOTE: The above description of the Tract nominated for lease has been provided and corrected, where required, exclusively by the nomination party. Any mineral lease selected from this Tract and awarded by the Louisiana State Mineral Board shall be without warranty of any kind, either express, implied, or statutory, including, but not limited to, the implied warranties of merchantability and fitness for a particular purpose. Should the mineral lease awarded by the Louisiana State Mineral Board be subsequently modified, cancelled or abrogated due to the existence of conflicting leases, operating agreements, private claims or other future obligations or conditions which may affect all or any portion of the leased Tract, it shall not relieve the Lessee of the obligation to pay any bonus due thereon to the Louisiana State Mineral Board, nor shall the Louisiana State Mineral Board be obligated to refund any consideration paid by the Lessor prior to such modification, cancellation, or abrogation, including, but not limited to, bonuses, rentals and royalties.

NOTE: The State of Louisiana does hereby reserve, and this lease shall be subject to, the imprescriptible right of surface use in the nature of a servitude in favor of the Department of Natural Resources, including its Offices and Commissions, for the sole purpose of implementing, constructing, servicing and maintaining approved coastal zone management and/or restoration projects. Utilization of any and all rights derived under this lease by the mineral lessee, its agents, successors or assigns, shall not interfere with nor hinder the reasonable surface use by the

Department of Natural Resources, its Offices or Commissions, as herein above reserved.

Applicant: HARPER PETROLEUM COMPANY, INC.

Bidder	Cash Payment	Price/Acre	Rental	Oil	Gas	Other

Legend

- 08110099
- Active_Leases
- Counties

DOQQ2004

JEFFERSON PARISH

T16S - R23E

SL 19198

P.O.B.

LAFOURCHE PARISH

T16S - R22E

