

TRACT 40476 - Cameron Parish, Louisiana

All of the lands now or formerly constituting the beds and bottoms of all water bodies of every nature and description as to which title is vested in the State of Louisiana, together with all islands arising therein and other lands formed by accretion or by reliction, where allowed by law, excepting tax adjudicated lands, and not presently under mineral lease on November 12, 2008, situated in Cameron Parish, Louisiana, and more particularly described as follows: Beginning at a point having Coordinates of X = 1,539,498.00 and Y = 451,682.00; thence East 10,435.00 feet to a point having Coordinates of X = 1,549,933.00 and Y = 451,682.00; thence South 10,435.00 feet to a point having Coordinates of X = 1,549,933.00 and Y = 441,247.00; thence West 10,435.00 feet to a point having Coordinates of X = 1,539,498.00 and Y = 441,247.00; thence North 10,435.00 feet to the point of beginning, containing approximately **2,499.75 acres**, all as more particularly outlined on a plat on file in the Office of Mineral Resources, Department of Natural Resources. All bearings, distances and coordinates are based on Louisiana Coordinate System of 1927, (North or South Zone), where applicable.

NOTE: The above description of the Tract nominated for lease has been provided and corrected, where required, exclusively by the nomination party. Any mineral lease selected from this Tract and awarded by the Louisiana State Mineral Board shall be without warranty of any kind, either express, implied, or statutory, including, but not limited to, the implied warranties of merchantability and fitness for a particular purpose. Should the mineral lease awarded by the Louisiana State Mineral Board be subsequently modified, cancelled or abrogated due to the existence of conflicting leases, operating agreements, private claims or other future obligations or conditions which may affect all or any portion of the leased Tract, it shall not relieve the Lessee of the obligation to pay any bonus due thereon to the Louisiana State Mineral Board, nor shall the Louisiana State Mineral Board be obligated to refund any consideration paid by the Lessor prior to such modification, cancellation, or abrogation, including, but not limited to, bonuses, rentals and royalties.

NOTE: The State of Louisiana does hereby reserve, and this lease shall be subject to, the imprescriptible right of surface use in the nature of a servitude in favor of the Department of Natural Resources, including its Offices and Commissions, for the sole purpose of implementing, constructing, servicing and maintaining approved coastal zone management and/or restoration projects. Utilization of any and all rights derived under this lease by the mineral lessee, its agents, successors or assigns, shall not interfere with nor hinder the reasonable surface use by the Department of Natural Resources, its Offices or Commissions, as herein above reserved.

Applicant: MIDNITE ENERGY, INC.

Bidder	Cash Payment	Price/Acre	Rental	Oil	Gas	Other

CAMERON PARISH

P.O.B.

T13S - R4W

GRAND LAKE



TRACT 40477 - Cameron Parish, Louisiana

All of the lands now or formerly constituting the beds and bottoms of all water bodies of every nature and description as to which title is vested in the State of Louisiana, together with all islands arising therein and other lands formed by accretion or by reliction, where allowed by law, excepting tax adjudicated lands, and not presently under mineral lease on November 12, 2008, situated in Cameron Parish, Louisiana, and more particularly described as follows: Beginning at a point having Coordinates of X = 1,549,933.00 and Y = 451,682.00; thence East 10,435.00 feet to a point having Coordinates of X = 1,560,368.00 and Y = 451,682.00; thence South 10,435.00 feet to a point having Coordinates of X = 1,560,368.00 and Y = 441,247.00; thence West 10,435.00 feet to a point having Coordinates of X = 1,549,933.00 and Y = 441,247.00; thence North 10,435.00 feet to the point of beginning, containing approximately **2,490 acres**, all as more particularly outlined on a plat on file in the Office of Mineral Resources, Department of Natural Resources. All bearings, distances and coordinates are based on Louisiana Coordinate System of 1927, (North or South Zone), where applicable.

NOTE: The above description of the Tract nominated for lease has been provided and corrected, where required, exclusively by the nomination party. Any mineral lease selected from this Tract and awarded by the Louisiana State Mineral Board shall be without warranty of any kind, either express, implied, or statutory, including, but not limited to, the implied warranties of merchantability and fitness for a particular purpose. Should the mineral lease awarded by the Louisiana State Mineral Board be subsequently modified, cancelled or abrogated due to the existence of conflicting leases, operating agreements, private claims or other future obligations or conditions which may affect all or any portion of the leased Tract, it shall not relieve the Lessee of the obligation to pay any bonus due thereon to the Louisiana State Mineral Board, nor shall the Louisiana State Mineral Board be obligated to refund any consideration paid by the Lessor prior to such modification, cancellation, or abrogation, including, but not limited to, bonuses, rentals and royalties.

NOTE: The State of Louisiana does hereby reserve, and this lease shall be subject to, the imprescriptible right of surface use in the nature of a servitude in favor of the Department of Natural Resources, including its Offices and Commissions, for the sole purpose of implementing, constructing, servicing and maintaining approved coastal zone management and/or restoration projects. Utilization of any and all rights derived under this lease by the mineral lessee, its agents, successors or assigns, shall not interfere with nor hinder the reasonable surface use by the Department of Natural Resources, its Offices or Commissions, as herein above reserved.

Applicant: MIDNITE ENERGY, INC.

Bidder	Cash Payment	Price/Acre	Rental	Oil	Gas	Other

Legend
08110088
DOQQ2004

CAMERON PARISH

GRAND LAKE

P.O.B.



TRACT 40478 - Cameron Parish, Louisiana

All of the lands now or formerly constituting the beds and bottoms of all water bodies of every nature and description as to which title is vested in the State of Louisiana, together with all islands arising therein and other lands formed by accretion or by reliction, where allowed by law, excepting tax adjudicated lands, and not presently under mineral lease on November 12, 2008, situated in Cameron Parish, Louisiana, and more particularly described as follows: Beginning at a point having Coordinates of X = 1,560,368.00 and Y = 451,682.00; thence East 10,435.00 feet to a point having Coordinates of X = 1,570,803.00 and Y = 451,682.00; thence South 10,435.00 feet to a point having Coordinates of X = 1,570,803.00 and Y = 441,247.00; thence West 10,435.00 feet to a point having Coordinates of X = 1,560,368.00 and Y = 441,247.00; thence North 10,435.00 feet to the point of beginning, containing approximately **2,305 acres**, all as more particularly outlined on a plat on file in the Office of Mineral Resources, Department of Natural Resources. All bearings, distances and coordinates are based on Louisiana Coordinate System of 1927, (North or South Zone), where applicable.

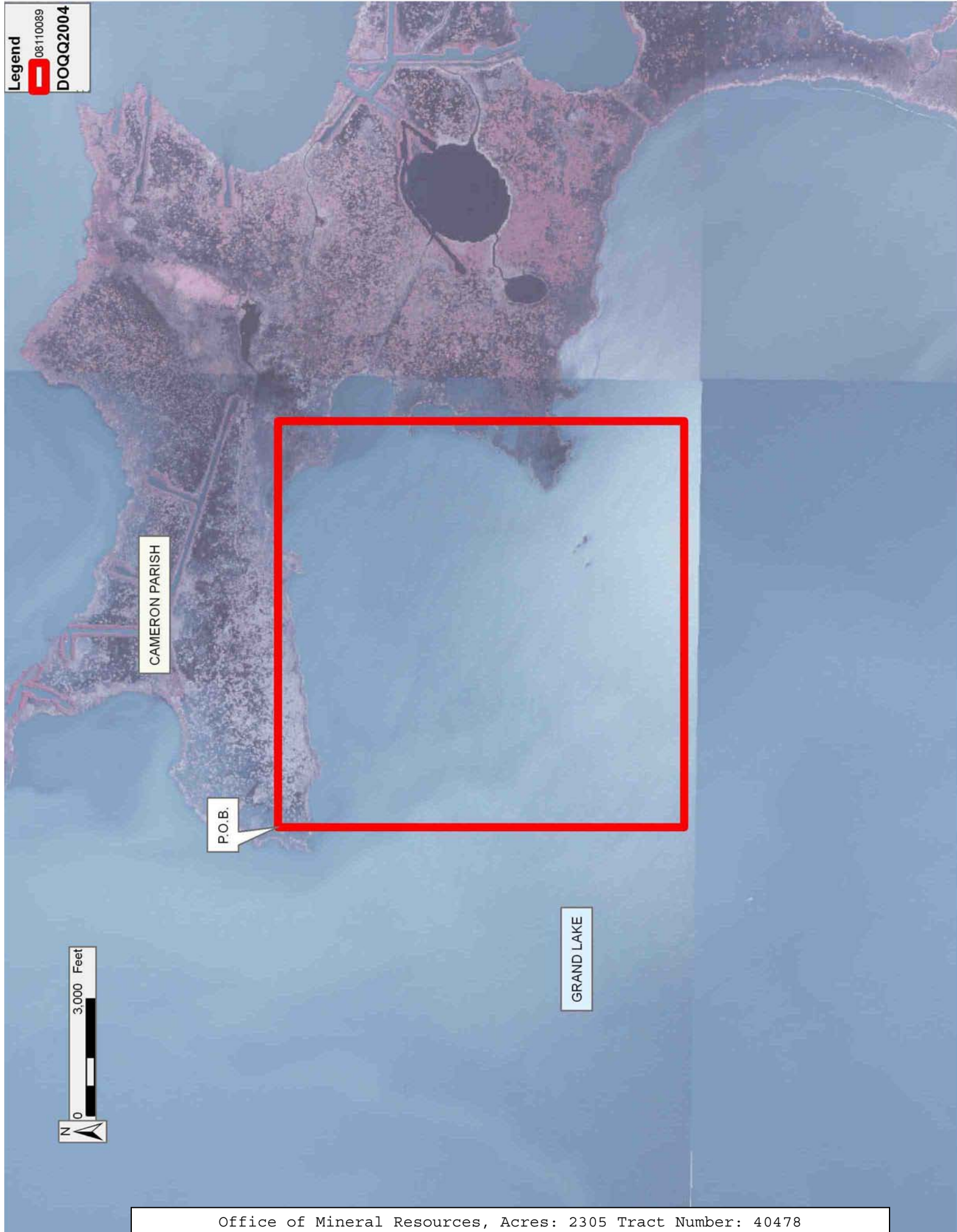
NOTE: The above description of the Tract nominated for lease has been provided and corrected, where required, exclusively by the nomination party. Any mineral lease selected from this Tract and awarded by the Louisiana State Mineral Board shall be without warranty of any kind, either express, implied, or statutory, including, but not limited to, the implied warranties of merchantability and fitness for a particular purpose. Should the mineral lease awarded by the Louisiana State Mineral Board be subsequently modified, cancelled or abrogated due to the existence of conflicting leases, operating agreements, private claims or other future obligations or conditions which may affect all or any portion of the leased Tract, it shall not relieve the Lessee of the obligation to pay any bonus due thereon to the Louisiana State Mineral Board, nor shall the Louisiana State Mineral Board be obligated to refund any consideration paid by the Lessor prior to such modification, cancellation, or abrogation, including, but not limited to, bonuses, rentals and royalties.

NOTE: The State of Louisiana does hereby reserve, and this lease shall be subject to, the imprescriptible right of surface use in the nature of a servitude in favor of the Department of Natural Resources, including its Offices and Commissions, for the sole purpose of implementing, constructing, servicing and maintaining approved coastal zone management and/or restoration projects. Utilization of any and all rights derived under this lease by the mineral lessee, its agents, successors or assigns, shall not interfere with nor hinder the reasonable surface use by the Department of Natural Resources, its Offices or Commissions, as herein above reserved.

Applicant: MIDNITE ENERGY, INC.

Bidder	Cash Payment	Price/Acre	Rental	Oil	Gas	Other

Legend
08110089
DOQQ2004



CAMERON PARISH

P.O.B.

GRAND LAKE



TRACT 40479 - Assumption Parish, Louisiana

All of the lands now or formerly constituting the beds and bottoms of all water bodies of every nature and description as to which title is vested in the State of Louisiana, together with all islands arising therein and other lands formed by accretion or by reliction, where allowed by law, excepting tax adjudicated lands, and not presently under mineral lease on November 12, 2008, situated in Assumption Parish, Louisiana, and more particularly described as follows: Beginning at a corner of State Lease No. 16626 having Coordinates of X = 2,054,075.00 and Y = 441,950.00; thence along the boundary of said State Lease No. 16626 the following courses: South 500.00 feet to its Southwest corner having Coordinates of X = 2,054,075.00 and Y = 441,450.00; East 4,000.00 feet to its Southeast corner having Coordinates of X = 2,058,075.00 and Y = 441,450.00 and North 47 degrees 33 minutes 50 seconds East 4,742.36 feet to a corner having Coordinates of X = 2,061,575.00 and Y = 444,650.00; thence South 6,700.00 feet to a point having Coordinates of X = 2,061,575.00 and Y = 437,950.00; thence West 15,125.00 feet to a point having Coordinates of X = 2,046,450.00 and Y = 437,950.00; thence North 4,000.00 feet to a point having Coordinates of X = 2,046,450.00 and Y = 441,950.00; thence East 7,625.00 feet to the point of beginning, containing approximately **1,384 acres**, all as more particularly outlined on a plat on file in the Office of Mineral Resources, Department of Natural Resources. All bearings, distances and coordinates are based on Louisiana Coordinate System of 1927, (North or South Zone), where applicable.

NOTE: The above description of the Tract nominated for lease has been provided and corrected, where required, exclusively by the nomination party. Any mineral lease selected from this Tract and awarded by the Louisiana State Mineral Board shall be without warranty of any kind, either express, implied, or statutory, including, but not limited to, the implied warranties of merchantability and fitness for a particular purpose. Should the mineral lease awarded by the Louisiana State Mineral Board be subsequently modified, cancelled or abrogated due to the existence of conflicting leases, operating agreements, private claims or other future obligations or conditions which may affect all or any portion of the leased Tract, it shall not relieve the Lessee of the obligation to pay any bonus due thereon to the Louisiana State Mineral Board, nor shall the Louisiana State Mineral Board be obligated to refund any consideration paid by the Lessor prior to such modification, cancellation, or abrogation, including, but not limited to, bonuses, rentals and royalties.

NOTE: The State of Louisiana does hereby reserve, and this lease shall be subject to, the imprescriptible right of surface use in the nature of a servitude in favor of the Department of Natural Resources, including its Offices and Commissions, for the sole purpose of implementing, constructing, servicing and maintaining approved coastal zone management and/or restoration projects. Utilization of any and all rights derived under this lease by the mineral lessee, its agents, successors or assigns, shall not interfere with nor hinder the reasonable surface use by the

Department of Natural Resources, its Offices or Commissions, as herein above reserved.

Applicant: CYPRESS ENERGY CORPORATION

Bidder	Cash Payment	Price/Acre	Rental	Oil	Gas	Other

Legend
08110138
Active_Leases
DOQQ2004

ASSUMPTION PARISH

LAKE VERRET

SL 16626

P.O.B.



SL 346

T14S - R12E

TRACT 40480 - Cameron Parish, Louisiana

All of the lands now or formerly constituting the beds and bottoms of all water bodies of every nature and description as to which title is vested in the State of Louisiana, together with all islands arising therein and other lands formed by accretion or by reliction, where allowed by law, excepting tax adjudicated lands, and not presently under mineral lease on November 12, 2008, situated in Cameron Parish, Louisiana, and more particularly described as follows: Beginning at a point having Coordinates of X = 1,549,933.00 and Y = 441,247.00; thence East 10,435.00 feet to a point having Coordinates of X = 1,560,368.00 and Y = 441,247.00; thence South 10,435.00 feet to a point having Coordinates of X = 1,560,368.00 and Y = 430,812.00; thence West 10,435.00 feet to a point having Coordinates of X = 1,549,933.00 and Y = 430,812.00; thence North 10,435.00 feet to the point of beginning, containing approximately **2,499.75 acres**, all as more particularly outlined on a plat on file in the Office of Mineral Resources, Department of Natural Resources. All bearings, distances and coordinates are based on Louisiana Coordinate System of 1927, (North or South Zone), where applicable.

NOTE: The above description of the Tract nominated for lease has been provided and corrected, where required, exclusively by the nomination party. Any mineral lease selected from this Tract and awarded by the Louisiana State Mineral Board shall be without warranty of any kind, either express, implied, or statutory, including, but not limited to, the implied warranties of merchantability and fitness for a particular purpose. Should the mineral lease awarded by the Louisiana State Mineral Board be subsequently modified, cancelled or abrogated due to the existence of conflicting leases, operating agreements, private claims or other future obligations or conditions which may affect all or any portion of the leased Tract, it shall not relieve the Lessee of the obligation to pay any bonus due thereon to the Louisiana State Mineral Board, nor shall the Louisiana State Mineral Board be obligated to refund any consideration paid by the Lessor prior to such modification, cancellation, or abrogation, including, but not limited to, bonuses, rentals and royalties.

NOTE: The State of Louisiana does hereby reserve, and this lease shall be subject to, the imprescriptible right of surface use in the nature of a servitude in favor of the Department of Natural Resources, including its Offices and Commissions, for the sole purpose of implementing, constructing, servicing and maintaining approved coastal zone management and/or restoration projects. Utilization of any and all rights derived under this lease by the mineral lessee, its agents, successors or assigns, shall not interfere with nor hinder the reasonable surface use by the Department of Natural Resources, its Offices or Commissions, as herein above reserved.

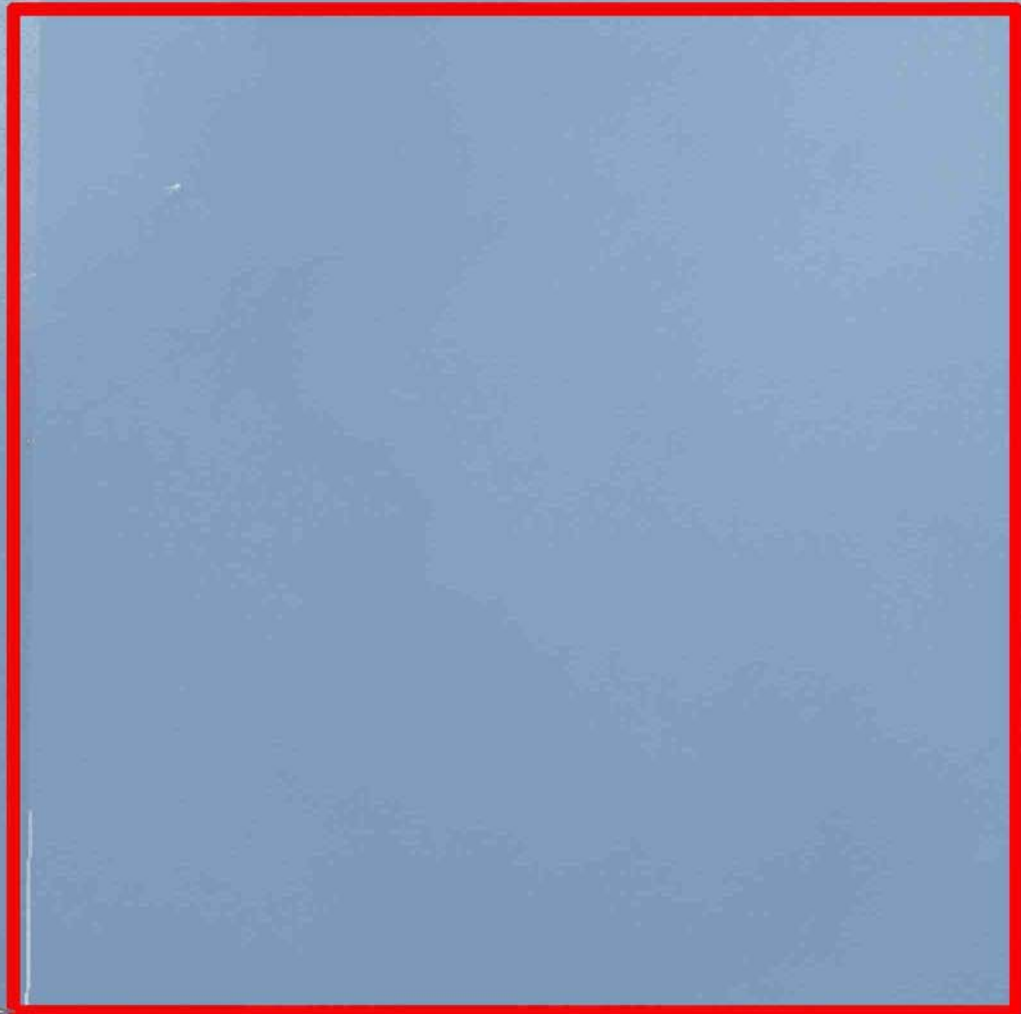
Applicant: MIDNITE ENERGY, INC.

Bidder	Cash Payment	Price/Acre	Rental	Oil	Gas	Other

Legend
08110091
DOQQ2004

CAMERON PARISH

GRAND LAKE



P.O.B.

T14S - R4W

TRACT 40481 - Cameron Parish, Louisiana

All of the lands now or formerly constituting the beds and bottoms of all water bodies of every nature and description as to which title is vested in the State of Louisiana, together with all islands arising therein and other lands formed by accretion or by reliction, where allowed by law, excepting tax adjudicated lands, and not presently under mineral lease on November 12, 2008, situated in Cameron Parish, Louisiana, and more particularly described as follows: Beginning at a point having Coordinates of X = 1,560,368.00 and Y = 441,247.00; thence East 10,435.00 feet to a point having Coordinates of X = 1,570,803.00 and Y = 441,247.00; thence South 10,435.00 feet to a point having Coordinates of X = 1,570,803.00 and Y = 430,812.00; thence West 10,435.00 feet to a point having Coordinates of X = 1,560,368.00 and Y = 430,812.00; thence North 10,435.00 feet to the point of beginning, containing approximately **2,499.75 acres**, all as more particularly outlined on a plat on file in the Office of Mineral Resources, Department of Natural Resources. All bearings, distances and coordinates are based on Louisiana Coordinate System of 1927, (North or South Zone), where applicable.

NOTE: The above description of the Tract nominated for lease has been provided and corrected, where required, exclusively by the nomination party. Any mineral lease selected from this Tract and awarded by the Louisiana State Mineral Board shall be without warranty of any kind, either express, implied, or statutory, including, but not limited to, the implied warranties of merchantability and fitness for a particular purpose. Should the mineral lease awarded by the Louisiana State Mineral Board be subsequently modified, cancelled or abrogated due to the existence of conflicting leases, operating agreements, private claims or other future obligations or conditions which may affect all or any portion of the leased Tract, it shall not relieve the Lessee of the obligation to pay any bonus due thereon to the Louisiana State Mineral Board, nor shall the Louisiana State Mineral Board be obligated to refund any consideration paid by the Lessor prior to such modification, cancellation, or abrogation, including, but not limited to, bonuses, rentals and royalties.

NOTE: The State of Louisiana does hereby reserve, and this lease shall be subject to, the imprescriptible right of surface use in the nature of a servitude in favor of the Department of Natural Resources, including its Offices and Commissions, for the sole purpose of implementing, constructing, servicing and maintaining approved coastal zone management and/or restoration projects. Utilization of any and all rights derived under this lease by the mineral lessee, its agents, successors or assigns, shall not interfere with nor hinder the reasonable surface use by the Department of Natural Resources, its Offices or Commissions, as herein above reserved.

Applicant: MIDNITE ENERGY, INC.

Bidder	Cash Payment	Price/Acre	Rental	Oil	Gas	Other

Legend
08110092
DOQQ2004

CAMERON PARISH

GRAND LAKE



P.O.B.



TRACT 40482 - Cameron Parish, Louisiana

All of the lands now or formerly constituting the beds and bottoms of all water bodies of every nature and description as to which title is vested in the State of Louisiana, together with all islands arising therein and other lands formed by accretion or by reliction, where allowed by law, excepting tax adjudicated lands, and not presently under mineral lease on November 12, 2008, situated in Cameron Parish, Louisiana, and more particularly described as follows: Beginning at a point having Coordinates of X = 1,539,498.00 and Y = 441,247.00; thence East 10,435.00 feet to a point having Coordinates of X = 1,549,933.00 and Y = 441,247.00; thence South 10,435.00 feet to a point having Coordinates of X = 1,549,933.00 and Y = 430,812.00; thence West 10,435.00 feet to a point having Coordinates of X = 1,539,498.00 and Y = 430,812.00; thence North 10,435.00 feet to the point of beginning, containing approximately **2,499 acres**, all as more particularly outlined on a plat on file in the Office of Mineral Resources, Department of Natural Resources. All bearings, distances and coordinates are based on Louisiana Coordinate System of 1927, (North or South Zone), where applicable.

NOTE: The above description of the Tract nominated for lease has been provided and corrected, where required, exclusively by the nomination party. Any mineral lease selected from this Tract and awarded by the Louisiana State Mineral Board shall be without warranty of any kind, either express, implied, or statutory, including, but not limited to, the implied warranties of merchantability and fitness for a particular purpose. Should the mineral lease awarded by the Louisiana State Mineral Board be subsequently modified, cancelled or abrogated due to the existence of conflicting leases, operating agreements, private claims or other future obligations or conditions which may affect all or any portion of the leased Tract, it shall not relieve the Lessee of the obligation to pay any bonus due thereon to the Louisiana State Mineral Board, nor shall the Louisiana State Mineral Board be obligated to refund any consideration paid by the Lessor prior to such modification, cancellation, or abrogation, including, but not limited to, bonuses, rentals and royalties.

NOTE: The State of Louisiana does hereby reserve, and this lease shall be subject to, the imprescriptible right of surface use in the nature of a servitude in favor of the Department of Natural Resources, including its Offices and Commissions, for the sole purpose of implementing, constructing, servicing and maintaining approved coastal zone management and/or restoration projects. Utilization of any and all rights derived under this lease by the mineral lessee, its agents, successors or assigns, shall not interfere with nor hinder the reasonable surface use by the Department of Natural Resources, its Offices or Commissions, as herein above reserved.

Applicant: MIDNITE ENERGY, INC.

Bidder	Cash Payment	Price/Acre	Rental	Oil	Gas	Other

Legend
08110090
DOQQ2004

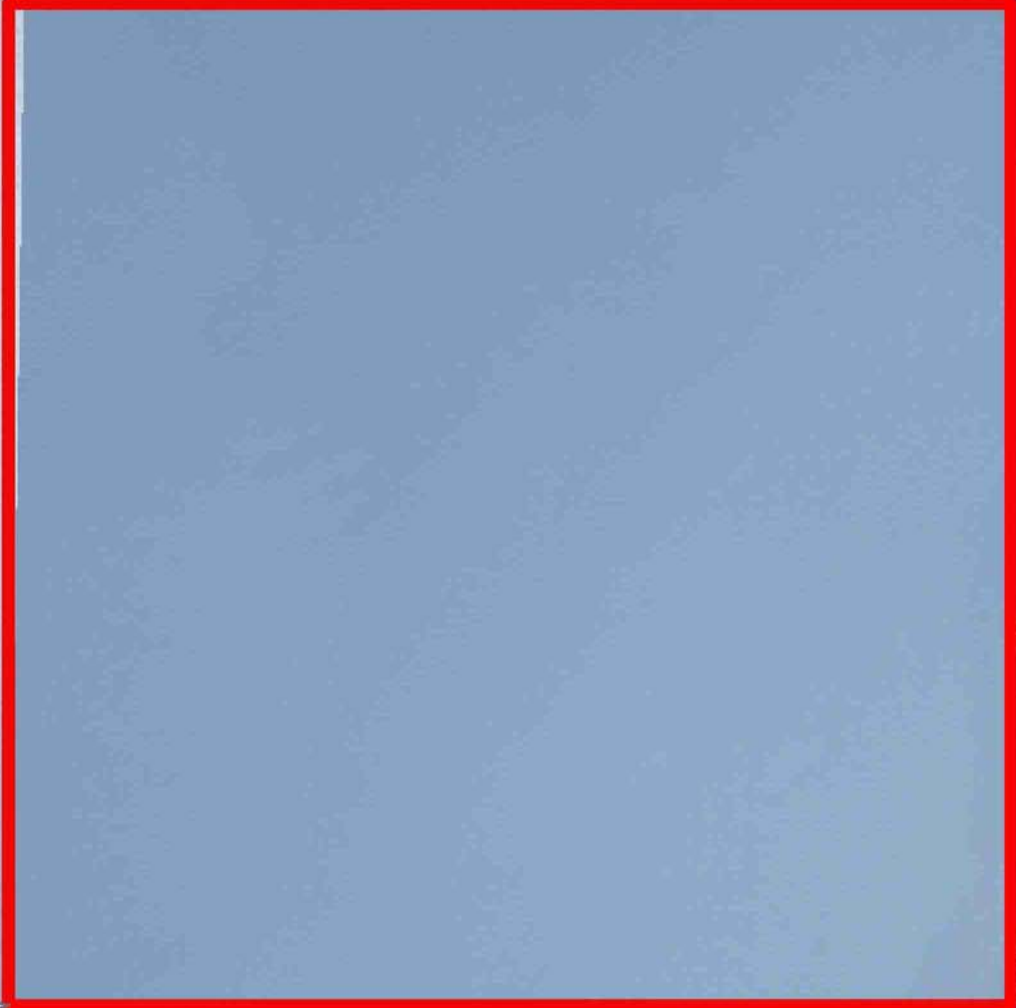
CAMERON PARISH

GRAND LAKE



P.O.B.

T14S - R4W



TRACT 40483 - Portion of Block 46, Chandeleur Sound Area, St. Bernard Parish, Louisiana

All of the lands now or formerly constituting the beds and bottoms of all water bodies of every nature and description as to which title is vested in the State of Louisiana, together with all islands arising therein and other lands formed by accretion or by reliction, where allowed by law, excepting tax adjudicated lands, and not presently under mineral lease on November 12, 2008, situated in St. Bernard Parish, Louisiana, and more particularly described as follows: Beginning at a point on the West line of Block 46, Chandeleur Sound Area, having Coordinates of X = 2,591,100.00 and Y = 418,205.00; thence East 14,750.00 feet to a point on the East line of said Block 46 having Coordinates of X = 2,605,850.00 and Y = 418,205.00; thence South 7,375.00 feet along the East line of said Block 46 to its Southeast corner having Coordinates of X = 2,605,850.00 and Y = 410,830.00; thence West 14,750.00 feet along the South line of said Block 46 to its Southwest corner having Coordinates of X = 2,591,100.00 and Y = 410,830.00; thence North 7,375.00 feet along the West line of said Block 46 to the point of beginning, containing approximately **1,580 acres**, all as more particularly outlined on a plat on file in the Office of Mineral Resources, Department of Natural Resources. All bearings, distances and coordinates are based on Louisiana Coordinate System of 1927, (North or South Zone), where applicable.

NOTE: The above description of the Tract nominated for lease has been provided and corrected, where required, exclusively by the nomination party. Any mineral lease selected from this Tract and awarded by the Louisiana State Mineral Board shall be without warranty of any kind, either express, implied, or statutory, including, but not limited to, the implied warranties of merchantability and fitness for a particular purpose. Should the mineral lease awarded by the Louisiana State Mineral Board be subsequently modified, cancelled or abrogated due to the existence of conflicting leases, operating agreements, private claims or other future obligations or conditions which may affect all or any portion of the leased Tract, it shall not relieve the Lessee of the obligation to pay any bonus due thereon to the Louisiana State Mineral Board, nor shall the Louisiana State Mineral Board be obligated to refund any consideration paid by the Lessor prior to such modification, cancellation, or abrogation, including, but not limited to, bonuses, rentals and royalties.

NOTE: The Office of Mineral Resources will require a minimum bonus of \$230 per acre and a minimum royalty of 23%.

NOTE: The State of Louisiana does hereby reserve, and this lease shall be subject to, the imprescriptible right of surface use in the nature of a servitude in favor of the Department of Natural Resources, including its Offices and Commissions, for the sole purpose of implementing, constructing, servicing and maintaining approved coastal zone management and/or restoration projects. Utilization of any and all rights derived under this lease by the mineral lessee, its agents, successors or assigns,

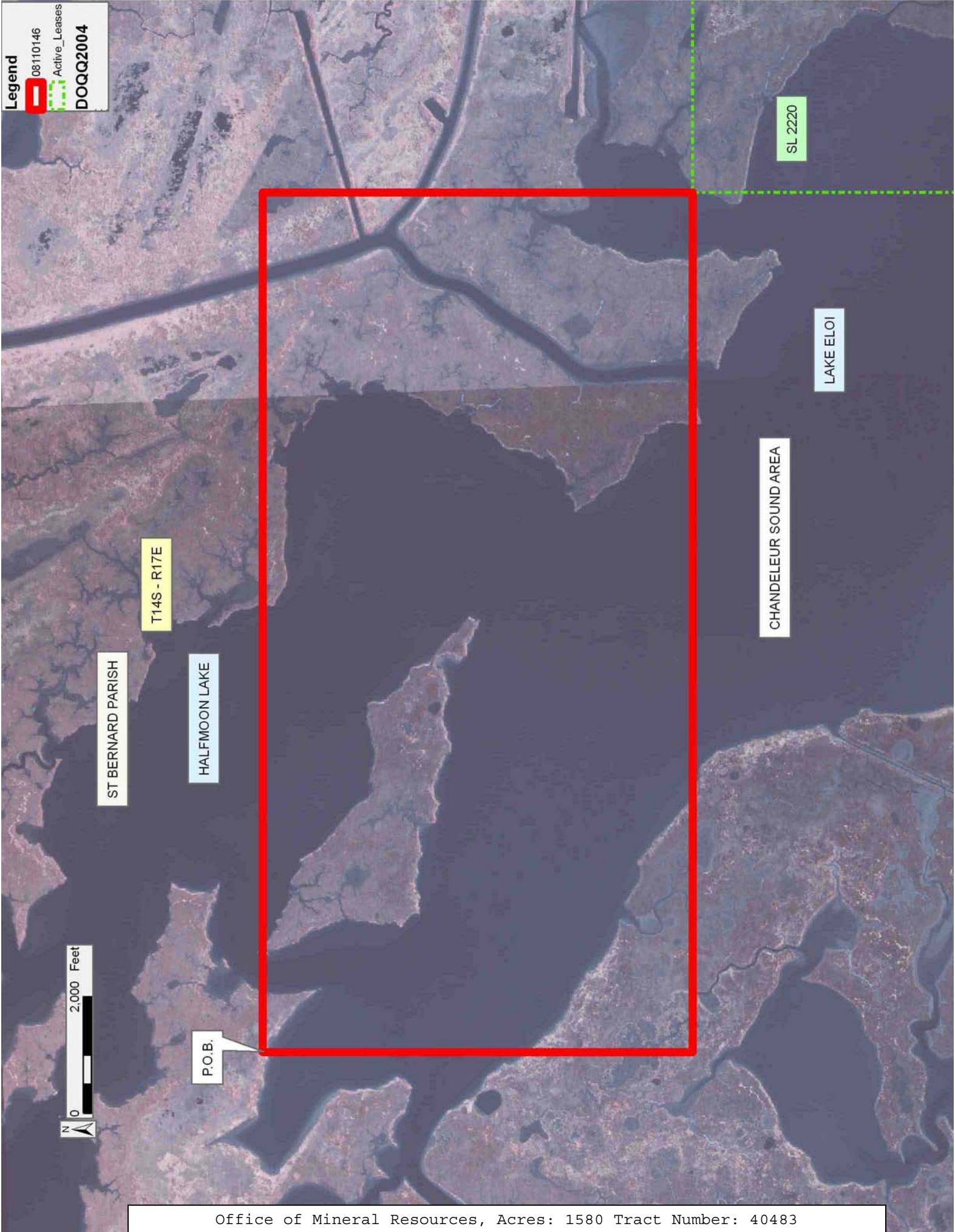
shall not interfere with nor hinder the reasonable surface use by the Department of Natural Resources, its Offices or Commissions, as herein above reserved.

NOTE: The Department of Wildlife and Fisheries has designated certain areas in the coastal waters of the State of Louisiana as Oyster Seed Bed Areas. The exact location of those Seed Bed Areas must be obtained from the Department of Wildlife and Fisheries and any work done under a mineral lease from the State of Louisiana may necessarily be conducted in conformity with the rules and regulations promulgated by the said Department of Wildlife and Fisheries for Oyster Seed Bed Areas.

Applicant: MINERAL SERVICES, INC.

Bidder	Cash Payment	Price/Acre	Rental	Oil	Gas	Other

Legend
08110146
Active_Leases
DOQQ2004



ST BERNARD PARISH

T14S - R17E

HALFMOON LAKE

P.O.B.

CHANDELEUR SOUND AREA

LAKE ELOI

SL 2220



TRACT 40484 - Iberia Parish, Louisiana

All of the lands now or formerly constituting the beds and bottoms of all water bodies of every nature and description as to which title is vested in the State of Louisiana, together with all islands arising therein and other lands formed by accretion or by reliction, where allowed by law, excepting tax adjudicated lands, and not presently under mineral lease on November 12, 2008, situated in Iberia Parish, Louisiana, and more particularly described as follows: Beginning at a point having Coordinates of X = 1,828,148.00 and Y = 423,145.00; thence East 9,240.00 feet to a point having Coordinates of X = 1,837,388.00 and Y = 423,145.00; thence South 8,408.00 feet to a point having Coordinates of X = 1,837,388.00 and Y = 414,737.00; thence West 9,240.00 feet to a point having Coordinates of X = 1,828,148.00 and Y = 414,737.00; thence North 8,408.00 feet to the point of beginning, containing approximately **1,667 acres**, all as more particularly outlined on a plat on file in the Office of Mineral Resources, Department of Natural Resources. All bearings, distances and coordinates are based on Louisiana Coordinate System of 1927, (North or South Zone), where applicable.

NOTE: The above description of the Tract nominated for lease has been provided and corrected, where required, exclusively by the nomination party. Any mineral lease selected from this Tract and awarded by the Louisiana State Mineral Board shall be without warranty of any kind, either express, implied, or statutory, including, but not limited to, the implied warranties of merchantability and fitness for a particular purpose. Should the mineral lease awarded by the Louisiana State Mineral Board be subsequently modified, cancelled or abrogated due to the existence of conflicting leases, operating agreements, private claims or other future obligations or conditions which may affect all or any portion of the leased Tract, it shall not relieve the Lessee of the obligation to pay any bonus due thereon to the Louisiana State Mineral Board, nor shall the Louisiana State Mineral Board be obligated to refund any consideration paid by the Lessor prior to such modification, cancellation, or abrogation, including, but not limited to, bonuses, rentals and royalties.

NOTE: The State of Louisiana does hereby reserve, and this lease shall be subject to, the imprescriptible right of surface use in the nature of a servitude in favor of the Department of Natural Resources, including its Offices and Commissions, for the sole purpose of implementing, constructing, servicing and maintaining approved coastal zone management and/or restoration projects. Utilization of any and all rights derived under this lease by the mineral lessee, its agents, successors or assigns, shall not interfere with nor hinder the reasonable surface use by the Department of Natural Resources, its Offices or Commissions, as herein above reserved.

NOTE: The Department of Wildlife and Fisheries has designated certain areas in the coastal waters of the State of Louisiana as Oyster Seed Bed Areas. The exact location of those Seed Bed Areas must be obtained from

the Department of Wildlife and Fisheries and any work done under a mineral lease from the State of Louisiana may necessarily be conducted in conformity with the rules and regulations promulgated by the said Department of Wildlife and Fisheries for Oyster Seed Bed Areas.

Applicant: HAROLD J. ANDERSON, INC.

Bidder	Cash Payment	Price/Acre	Rental	Oil	Gas	Other

IBERIA PARISH

P.O.B.

VERMILION BAY



TRACT 40485 - Iberia Parish, Louisiana

All of the lands now or formerly constituting the beds and bottoms of all water bodies of every nature and description as to which title is vested in the State of Louisiana, together with all islands arising therein and other lands formed by accretion or by reliction, where allowed by law, excepting tax adjudicated lands, and not presently under mineral lease on November 12, 2008, situated in Iberia Parish, Louisiana, and more particularly described as follows: Beginning at a point having Coordinates of X = 1,837,388.00 and Y = 423,145.00; thence East approximately 3,681 feet to a point on the Western boundary of State Lease No. 500, as amended, having a Coordinate of Y = 423,145.00; thence along the meanders of the boundary of said State Lease No. 500 the following: Southerly, Easterly, Southeasterly, Westerly, Southeasterly, Easterly, Southeasterly, Southwesterly, Northwesterly and Southerly to a point of intersection with an East-West line having a Coordinate of Y = 414,737.00; thence West approximately 2,230 feet along said line to a point on the boundary of State Lease No. 743, as amended, having Coordinates of X = 1,843,797.97 and Y = 414,737.00; thence along the boundary of said State Lease No. 743 the following courses: North 53 degrees 32 minutes 34 seconds West 124.25 feet, North 16 degrees 50 minutes 38 seconds West 113.89 feet, North 23 degrees 48 minutes 21 seconds East 37.17 feet, North 28 degrees 18 minutes 03 seconds West 73.83 feet, North 23 degrees 11 minutes 55 seconds East 152.32 feet, North 06 degrees 12 minutes 12 seconds East 46.28 feet, North 32 degrees 00 minutes 19 seconds East 47.17 feet, North 19 degrees 26 minutes 24 seconds East 54.09 feet, North 02 degrees 12 minutes 09 seconds West 104.08 feet, North 18 degrees 57 minutes 23 seconds East 243.19 feet, North 35 degrees 56 minutes 32 seconds East 148.22 feet, North 06 degrees 23 minutes 14 seconds East 134.84 feet, North 23 degrees 29 minutes 55 seconds East 50.16 feet, North 06 degrees 42 minutes 35 seconds East 85.59 feet, North 130.00 feet, North 18 degrees 12 minutes 31 seconds East 80.01 feet, North 06 degrees 39 minutes 29 seconds East 258.75 feet, North 12 degrees 06 minutes 42 seconds East 238.31 feet, North 04 degrees 36 minutes 38 seconds East 62.21 feet, North 27 degrees 08 minutes 24 seconds West 133.73 feet, North 08 degrees 39 minutes 51 seconds East 106.22 feet, North 19 degrees 34 minutes 23 seconds West 47.76 feet, North 10 degrees 18 minutes 17 seconds West 134.17 feet, North 07 degrees 41 minutes 46 seconds East 37.34 feet, North 11 degrees 35 minutes 32 seconds West 39.82 feet, North 02 degrees 31 minutes 01 seconds West 91.09 feet, North 23 degrees 50 minutes 42 seconds West 197.90 feet, North 35 degrees 53 minutes 51 seconds West 129.62 feet, North 52 degrees 15 minutes 12 seconds West 78.41 feet, West 22.00 feet, North 26 degrees 57 minutes 40 seconds West 194.10 feet and North 45 degrees 00 minutes 00 seconds West 74.97 feet to a point on the boundary of State Lease No. 15612, as amended, having Coordinates of X = 1,843,597.02 and Y = 417,900.96; thence along the boundary of said State Lease No. 15612 the following courses: Southeasterly along an arc to the left with a radius of 700.00 feet and a chord bearing of South 72 degrees 21 minutes 22 seconds East 4.49 feet, Northeasterly along an arc to the right with a radius of 500.00 feet and a chord bearing of North 08 degrees 49 minutes 38 seconds East 104.95 feet,

North 14 degrees 51 minutes 06 seconds East 126.37 feet, Northeasterly along an arc to the right with a radius of 2,800.00 feet and a chord bearing of North 16 degrees 07 minutes 25 seconds East 124.29 feet, North 27 degrees 34 minutes 43 seconds West 53.36 feet, South 17 degrees 31 minutes 32 seconds West 65.17 feet, South 13 degrees 37 minutes 37 seconds West 169.78 feet, South 07 degrees 51 minutes 12 seconds West 146.37 feet, North 60 degrees 15 minutes 18 seconds West 5.41 feet to a point on the Eastern boundary of said State Lease No. 743 having Coordinates of X = 1,843,575.29 and Y = 417,922.69; thence along the boundary of said State Lease No. 743 the following courses: North 45 degrees 00 minutes 00 seconds West 0.36 feet, North 37 degrees 55 minutes 35 seconds West 97.62 feet, North 26 degrees 57 minutes 08 seconds West 66.19 feet, North 55 degrees 00 minutes 29 seconds West 36.62 feet, North 32 degrees 41 minutes 31 seconds West 79.62 feet, North 01 degrees 19 minutes 56 seconds West 43.02 feet, North 24 degrees 34 minutes 02 seconds West 38.49 feet, North 55.00 feet, North 48 degrees 21 minutes 59 seconds West 60.21 feet, North 29 degrees 19 minutes 55 seconds West 120.45 feet, North 02 degrees 17 minutes 26 seconds West 100.08 feet, North 26 degrees 33 minutes 54 seconds West 38.02 feet, North 42 degrees 02 minutes 21 seconds West 82.14 feet, North 11 degrees 41 minutes 22 seconds West 59.23 feet, North 59 degrees 10 minutes 20 seconds West 72.21 feet, North 30 degrees 57 minutes 50 seconds West 82.21 feet, North 30 degrees 57 minutes 50 seconds West 40.24 feet, South 13 degrees 07 minutes 18 seconds West 2,344.23 feet and South 02 degrees 14 minutes 37 seconds East 1,801.36 feet to a point on its Western boundary having Coordinates of X = 1,842,616.33 and Y = 414,737.00; thence West 5,228.33 feet to a point having Coordinates of X = 1,837,388.00 and Y = 414,737.00; thence North 8,408.00 feet to the point of beginning, **LESS AND EXCEPT** that portion if any, of State Lease No. 500, as amended that may lie within the above described tract, containing approximately **986 acres**, all as more particularly outlined on a plat on file in the Office of Mineral Resources, Department of Natural Resources. All bearings, distances and coordinates are based on Louisiana Coordinate System of 1927, (North or South Zone), where applicable.

NOTE: The above description of the Tract nominated for lease has been provided and corrected, where required, exclusively by the nomination party. Any mineral lease selected from this Tract and awarded by the Louisiana State Mineral Board shall be without warranty of any kind, either express, implied, or statutory, including, but not limited to, the implied warranties of merchantability and fitness for a particular purpose. Should the mineral lease awarded by the Louisiana State Mineral Board be subsequently modified, cancelled or abrogated due to the existence of conflicting leases, operating agreements, private claims or other future obligations or conditions which may affect all or any portion of the leased Tract, it shall not relieve the Lessee of the obligation to pay any bonus due thereon to the Louisiana State Mineral Board, nor shall the Louisiana State Mineral Board be obligated to refund any consideration paid by the Lessor prior to such modification, cancellation, or abrogation, including, but not limited to, bonuses, rentals and royalties.

NOTE: The State of Louisiana does hereby reserve, and this lease shall be subject to, the imprescriptible right of surface use in the nature of a servitude in favor of the Department of Natural Resources, including its Offices and Commissions, for the sole purpose of implementing, constructing, servicing and maintaining approved coastal zone management and/or restoration projects. Utilization of any and all rights derived under this lease by the mineral lessee, its agents, successors or assigns, shall not interfere with nor hinder the reasonable surface use by the Department of Natural Resources, its Offices or Commissions, as herein above reserved.

NOTE: The Department of Wildlife and Fisheries has designated certain areas in the coastal waters of the State of Louisiana as Oyster Seed Bed Areas. The exact location of those Seed Bed Areas must be obtained from the Department of Wildlife and Fisheries and any work done under a mineral lease from the State of Louisiana may necessarily be conducted in conformity with the rules and regulations promulgated by the said Department of Wildlife and Fisheries for Oyster Seed Bed Areas.

Applicant: HAROLD J. ANDERSON, INC.

Bidder	Cash Payment	Price/Acre	Rental	Oil	Gas	Other

Legend
08110103
Active_Leases
DOQQ2004

