

TRACT 40446 - Concordia Parish, Louisiana

All of the lands now or formerly constituting the beds and bottoms of all water bodies of every nature and description as to which title is vested in the State of Louisiana, together with all islands arising therein and other lands formed by accretion or by reliction, where allowed by law, excepting tax adjudicated lands, and not presently under mineral lease on November 12, 2008, situated in Concordia Parish, Louisiana, and more particularly described as follows: Beginning at a point having Coordinates of X = 2,287,562.08 and Y = 148,959.72; thence East 2,308.58 feet to a point having Coordinates of X = 2,289,870.66 and Y = 148,959.72; thence South 50 degrees 53 minutes 38 seconds East 2,090.39 feet to a point having Coordinates of X = 2,291,492.76 and Y = 147,641.18; thence South 35 degrees 43 minutes 04 seconds West 2,678.39 feet to a point having Coordinates of X = 2,289,929.14 and Y = 145,466.59; thence North 51 degrees 07 minutes 15 seconds West 3,951.67 feet to a point having Coordinates of X = 2,286,852.88 and Y = 147,946.99; thence North 35 degrees 00 minutes 11 seconds East 1,236.36 feet to the point of beginning, containing approximately **149 acres**, all as more particularly outlined on a plat on file in the Office of Mineral Resources, Department of Natural Resources. All bearings, distances and coordinates are based on Louisiana Coordinate System of 1927, (North or South Zone), where applicable.

NOTE: The above description of the Tract nominated for lease has been provided and corrected, where required, exclusively by the nomination party. Any mineral lease selected from this Tract and awarded by the Louisiana State Mineral Board shall be without warranty of any kind, either express, implied, or statutory, including, but not limited to, the implied warranties of merchantability and fitness for a particular purpose. Should the mineral lease awarded by the Louisiana State Mineral Board be subsequently modified, cancelled or abrogated due to the existence of conflicting leases, operating agreements, private claims or other future obligations or conditions which may affect all or any portion of the leased Tract, it shall not relieve the Lessee of the obligation to pay any bonus due thereon to the Louisiana State Mineral Board, nor shall the Louisiana State Mineral Board be obligated to refund any consideration paid by the Lessor prior to such modification, cancellation, or abrogation, including, but not limited to, bonuses, rentals and royalties.

Bidder	Cash Payment	Price/Acre	Rental	Oil	Gas	Other

Applicant: LESLIE M. COOPER



TRACT 40447 - West Feliciana Parish, Louisiana

All of the lands now or formerly constituting the beds and bottoms of all water bodies of every nature and description as to which title is vested in the State of Louisiana, together with all islands arising therein and other lands formed by accretion or by reliction, where allowed by law, excepting tax adjudicated lands, and not presently under mineral lease on November 12, 2008, situated in West Feliciana Parish, Louisiana, and more particularly described as follows: Beginning at a point having Coordinates of X = 1,915,410.15 and Y = 841,676.75; thence East 10,000.00 feet to a point having Coordinates of X = 1,925,410.15 and Y = 841,676.75; thence South 8,800.00 feet to a point having Coordinates of X = 1,925,410.15 and Y = 832,876.75; thence West 10,000.00 feet to a point having Coordinates of X = 1,915,410.15 and Y = 832,876.75; thence North 8,800.00 feet to the point of beginning, (This tract includes only waterbottoms claimed and owned by the state and specifically excludes any land which the state may claim or own and to which the mineral rights are vested in the state), containing approximately **447 acres**, all as more particularly outlined on a plat on file in the Office of Mineral Resources, Department of Natural Resources. All bearings, distances and coordinates are based on Louisiana Coordinate System of 1927, (North or South Zone), where applicable.

NOTE: The above description of the Tract nominated for lease has been provided and corrected, where required, exclusively by the nomination party. Any mineral lease selected from this Tract and awarded by the Louisiana State Mineral Board shall be without warranty of any kind, either express, implied, or statutory, including, but not limited to, the implied warranties of merchantability and fitness for a particular purpose. Should the mineral lease awarded by the Louisiana State Mineral Board be subsequently modified, cancelled or abrogated due to the existence of conflicting leases, operating agreements, private claims or other future obligations or conditions which may affect all or any portion of the leased Tract, it shall not relieve the Lessee of the obligation to pay any bonus due thereon to the Louisiana State Mineral Board, nor shall the Louisiana State Mineral Board be obligated to refund any consideration paid by the Lessor prior to such modification, cancellation, or abrogation, including, but not limited to, bonuses, rentals and royalties.

Bidder	Cash Payment	Price/Acre	Rental	Oil	Gas	Other

Applicant: LESLIE M. COOPER

WEST FELICIANA PARISH

T1S - R5W

LAKE KILLARNEY

P.O.B.



TRACT 40448 - Iberville Parish, Louisiana

All of the lands now or formerly constituting the beds and bottoms of all water bodies of every nature and description as to which title is vested in the State of Louisiana, together with all islands arising therein and other lands formed by accretion or by reliction, where allowed by law, excepting tax adjudicated lands, and not presently under mineral lease on November 12, 2008, situated in Iberville Parish, Louisiana, and more particularly described as follows: Beginning at a point having Coordinates of X = 1,947,700.00 and Y = 604,596.00; thence South 6,696.00 feet to the Northeast corner of State Lease No. 19101 having Coordinates of X = 1,947,700.00 and Y = 597,900.00; thence West 4,200.00 feet along the North boundary of said State Lease No. 19101 to its Northwest corner having Coordinates of X = 1,943,500.00 and Y = 597,900.00; thence West 1,735.00 feet to a point having Coordinates of X = 1,941,765.00 and Y = 597,900.00; thence North approximately 5,227 feet to a point on the Southern boundary of State Lease No. 4219, as amended, having a Coordinate of X = 1,941,765.00; thence Easterly, Southeasterly and Northerly along the meanders of boundary of said State Lease No. 4219 to its Easternmost Northeast corner, also being a point on the Southern boundary of State Lease No. 19100; thence along the boundary of said State Lease No. 19100 the following: Southeasterly to its Southeast corner having a Coordinate of X = 1,943,700.00 and North approximately 304 feet to a point on its East boundary having Coordinates of X = 1,943,700.00 and Y = 604,596.00; thence East 4,000.00 feet to the point of beginning, **LESS AND EXCEPT** that portion, if any, of State Lease No. 4219, as amended, and State Lease No. 19100 that may lie within the above described tract, containing approximately **46 acres**, all as more particularly outlined on a plat on file in the Office of Mineral Resources, Department of Natural Resources. All bearings, distances and coordinates are based on Louisiana Coordinate System of 1927, (North or South Zone), where applicable.

NOTE: The above description of the Tract nominated for lease has been provided and corrected, where required, exclusively by the nomination party. Any mineral lease selected from this Tract and awarded by the Louisiana State Mineral Board shall be without warranty of any kind, either express, implied, or statutory, including, but not limited to, the implied warranties of merchantability and fitness for a particular purpose. Should the mineral lease awarded by the Louisiana State Mineral Board be subsequently modified, cancelled or abrogated due to the existence of conflicting leases, operating agreements, private claims or other future obligations or conditions which may affect all or any portion of the leased Tract, it shall not relieve the Lessee of the obligation to pay any bonus due thereon to the Louisiana State Mineral Board, nor shall the Louisiana State Mineral Board be obligated to refund any consideration paid by the Lessor prior to such modification, cancellation, or abrogation, including, but not limited to, bonuses, rentals and royalties.

Applicant: OMNI ENERGY, INC.

Bidder	Cash Payment	Price/Acre	Rental	Oil	Gas	Other

Legend
08110004
Active_Leases
DOQQ2004

IBERVILLE PARISH

T8S - R9E

T9S - R10E

P.O.B.

BAYOU MARINGOUIN

SL 19100

SL 4219

SL 19101



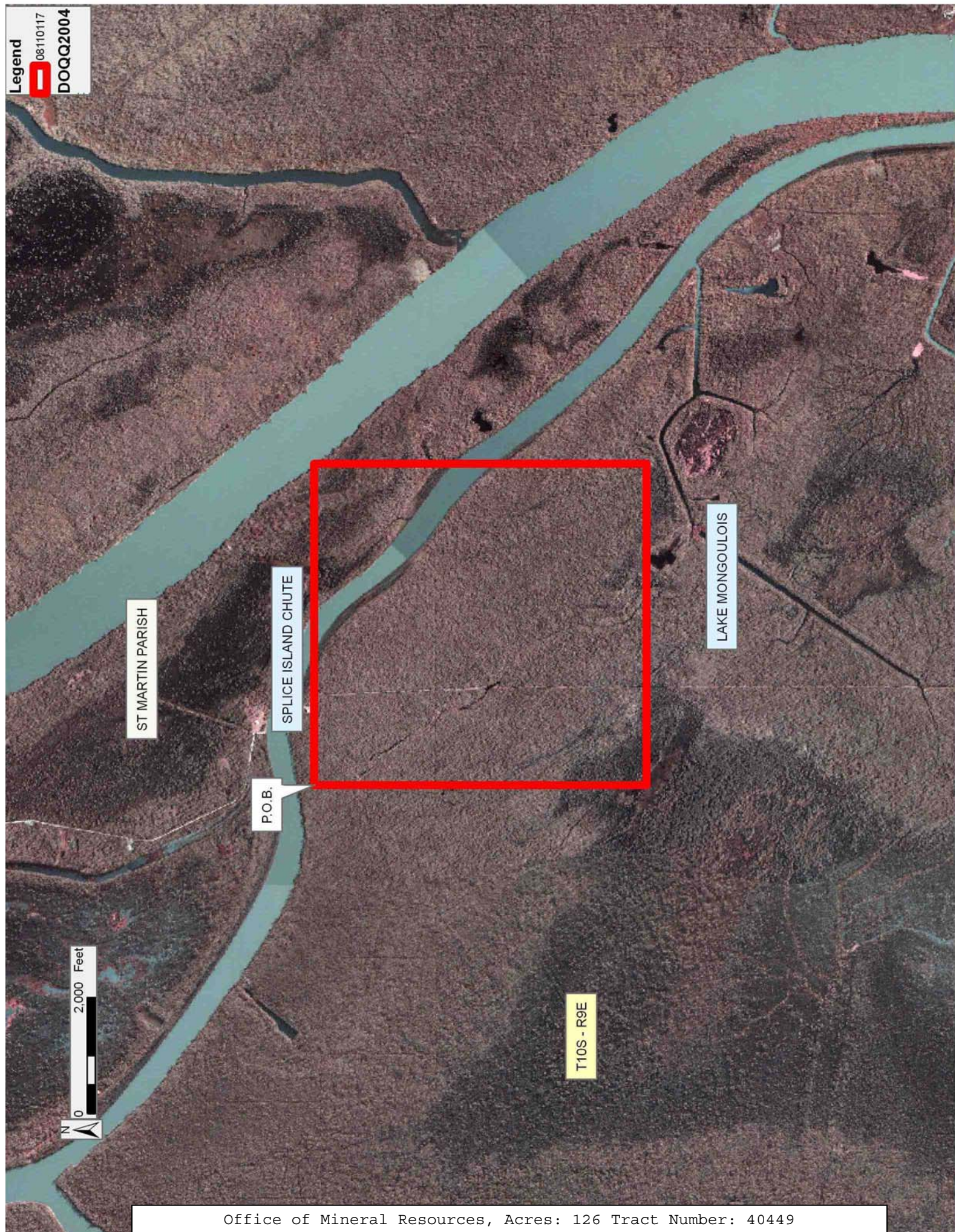
TRACT 40449 - St. Martin Parish, Louisiana

All of the lands now or formerly constituting the beds and bottoms of all water bodies of every nature and description as to which title is vested in the State of Louisiana, together with all islands arising therein and other lands formed by accretion or by reliction, where allowed by law, excepting tax adjudicated lands, and not presently under mineral lease on November 12, 2008, situated in St. Martin Parish, Louisiana, and more particularly described as follows: Beginning at a point having Coordinates of X = 1,926,855.00 and Y = 562,169.30; thence East 5,536.00 feet to a point having Coordinates of X = 1,932,391.00 and Y = 562,169.30; thence South 5,720.30 feet to a point having Coordinates of X = 1,932,391.00 and Y = 556,449.00; thence West 5,536.00 feet to a point having Coordinates of X = 1,926,855.00 and Y = 556,449.00; thence North 5,720.30 feet to the point of beginning, containing approximately **126 acres**, all as more particularly outlined on a plat on file in the Office of Mineral Resources, Department of Natural Resources. All bearings, distances and coordinates are based on Louisiana Coordinate System of 1927, (North or South Zone), where applicable.

NOTE: The above description of the Tract nominated for lease has been provided and corrected, where required, exclusively by the nomination party. Any mineral lease selected from this Tract and awarded by the Louisiana State Mineral Board shall be without warranty of any kind, either express, implied, or statutory, including, but not limited to, the implied warranties of merchantability and fitness for a particular purpose. Should the mineral lease awarded by the Louisiana State Mineral Board be subsequently modified, cancelled or abrogated due to the existence of conflicting leases, operating agreements, private claims or other future obligations or conditions which may affect all or any portion of the leased Tract, it shall not relieve the Lessee of the obligation to pay any bonus due thereon to the Louisiana State Mineral Board, nor shall the Louisiana State Mineral Board be obligated to refund any consideration paid by the Lessor prior to such modification, cancellation, or abrogation, including, but not limited to, bonuses, rentals and royalties.

Applicant: SPICE ISLAND OPERATORS

Bidder	Cash Payment	Price/Acre	Rental	Oil	Gas	Other



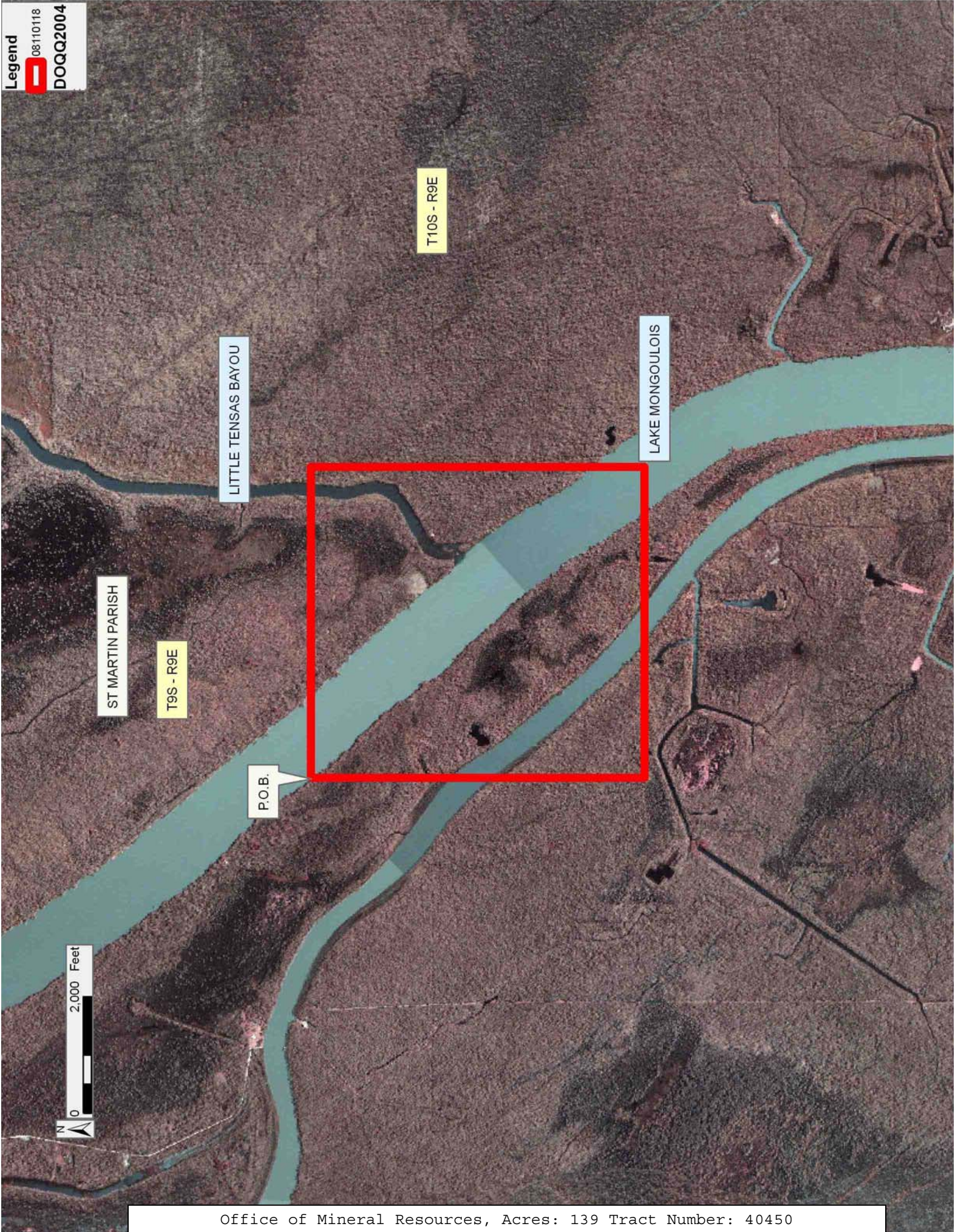
TRACT 40450 - St. Martin Parish, Louisiana

All of the lands now or formerly constituting the beds and bottoms of all water bodies of every nature and description as to which title is vested in the State of Louisiana, together with all islands arising therein and other lands formed by accretion or by reliction, where allowed by law, excepting tax adjudicated lands, and not presently under mineral lease on November 12, 2008, situated in St. Martin Parish, Louisiana, and more particularly described as follows: Beginning at a point having Coordinates of X = 1,932,391.00 and Y = 562,169.30; thence East 5,332.00 feet to a point having Coordinates of X = 1,937,723.00 and Y = 562,169.30; thence South 5,720.30 feet to a point having Coordinates of X = 1,937,723.00 and Y = 556,449.00; thence West 5,332.00 feet to a point having Coordinates of X = 1,932,391.00 and Y = 556,449.00; thence North 5,720.30 feet to the point of beginning, (This lease includes only waterbottoms claimed and owned by the state and specifically excludes any land which the state may claim or own and to which the mineral rights are vested in the state), containing approximately **139 acres**, all as more particularly outlined on a plat on file in the Office of Mineral Resources, Department of Natural Resources. All bearings, distances and coordinates are based on Louisiana Coordinate System of 1927, (North or South Zone), where applicable.

NOTE: The above description of the Tract nominated for lease has been provided and corrected, where required, exclusively by the nomination party. Any mineral lease selected from this Tract and awarded by the Louisiana State Mineral Board shall be without warranty of any kind, either express, implied, or statutory, including, but not limited to, the implied warranties of merchantability and fitness for a particular purpose. Should the mineral lease awarded by the Louisiana State Mineral Board be subsequently modified, cancelled or abrogated due to the existence of conflicting leases, operating agreements, private claims or other future obligations or conditions which may affect all or any portion of the leased Tract, it shall not relieve the Lessee of the obligation to pay any bonus due thereon to the Louisiana State Mineral Board, nor shall the Louisiana State Mineral Board be obligated to refund any consideration paid by the Lessor prior to such modification, cancellation, or abrogation, including, but not limited to, bonuses, rentals and royalties.

Bidder	Cash Payment	Price/Acre	Rental	Oil	Gas	Other

Applicant: SPICE ISLAND OPERATORS



TRACT 40451 - St. Martin Parish, Louisiana

All of the lands now or formerly constituting the beds and bottoms of all water bodies of every nature and description as to which title is vested in the State of Louisiana, together with all islands arising therein and other lands formed by accretion or by reliction, where allowed by law, excepting tax adjudicated lands, and not presently under mineral lease on November 12, 2008, situated in St. Martin Parish, Louisiana, and more particularly described as follows: Beginning at a point having Coordinates of X = 1,937,723.00 and Y = 562,169.30; thence East 5,404.00 feet to a point having Coordinates of X = 1,943,127.00 and Y = 562,169.30; thence South 5,720.30 feet to a point having Coordinates of X = 1,943,127.00 and Y = 556,449.00; thence West 5,404.00 feet to a point having Coordinates of X = 1,937,723.00 and Y = 556,449.00; thence North 5,720.30 feet to the point of beginning, (This lease includes only waterbottoms claimed and owned by the state and specifically excludes any land which the state may claim or own and to which the mineral rights are vested in the state), containing approximately **15 acres**, all as more particularly outlined on a plat on file in the Office of Mineral Resources, Department of Natural Resources. All bearings, distances and coordinates are based on Louisiana Coordinate System of 1927, (North or South Zone), where applicable.

NOTE: The above description of the Tract nominated for lease has been provided and corrected, where required, exclusively by the nomination party. Any mineral lease selected from this Tract and awarded by the Louisiana State Mineral Board shall be without warranty of any kind, either express, implied, or statutory, including, but not limited to, the implied warranties of merchantability and fitness for a particular purpose. Should the mineral lease awarded by the Louisiana State Mineral Board be subsequently modified, cancelled or abrogated due to the existence of conflicting leases, operating agreements, private claims or other future obligations or conditions which may affect all or any portion of the leased Tract, it shall not relieve the Lessee of the obligation to pay any bonus due thereon to the Louisiana State Mineral Board, nor shall the Louisiana State Mineral Board be obligated to refund any consideration paid by the Lessor prior to such modification, cancellation, or abrogation, including, but not limited to, bonuses, rentals and royalties.

Bidder	Cash Payment	Price/Acre	Rental	Oil	Gas	Other

Applicant: SPICE ISLAND OPERATORS

ST MARTIN PARISH

T9S - R9E

T10S - R9E

LAKE MONGOULOIS

P.O.B.



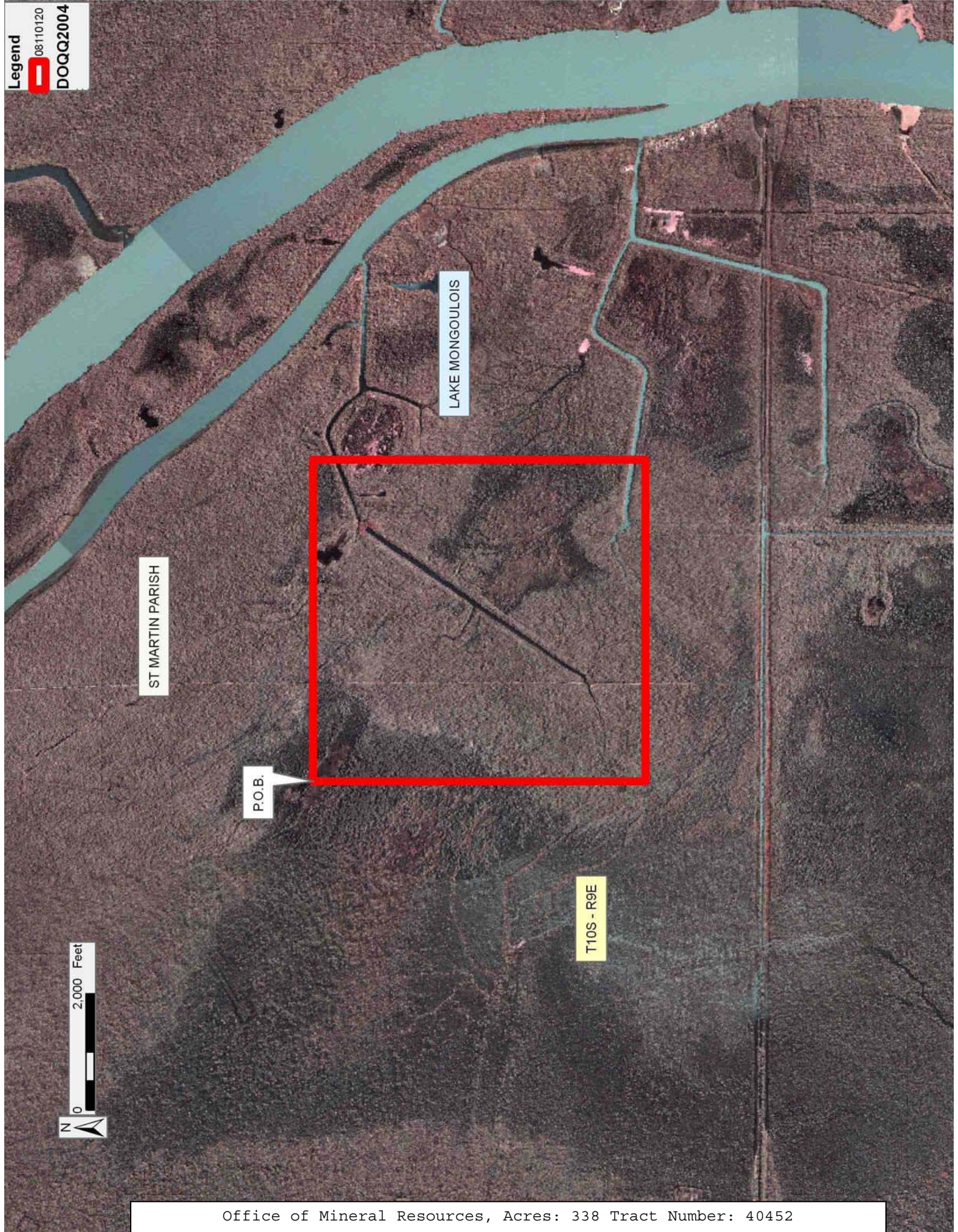
TRACT 40452 - St. Martin Parish, Louisiana

All of the lands now or formerly constituting the beds and bottoms of all water bodies of every nature and description as to which title is vested in the State of Louisiana, together with all islands arising therein and other lands formed by accretion or by reliction, where allowed by law, excepting tax adjudicated lands, and not presently under mineral lease on November 12, 2008, situated in St. Martin Parish, Louisiana, and more particularly described as follows: Beginning at a point having Coordinates of X = 1,926,855.00 and Y = 556,449.00; thence East 5,536.00 feet to a point having Coordinates of X = 1,932,391.00 and Y = 556,449.00; thence South 5,720.00 feet to a point having Coordinates of X = 1,932,391.00 and Y = 550,729.00; thence West 5,536.00 feet to a point having Coordinates of X = 1,926,855.00 and Y = 550,729.00; thence North 5,720.00 feet to the point of beginning, (This lease includes only waterbottoms claimed and owned by the state and specifically excludes any land which the state may claim or own and to which the mineral rights are vested in the state), containing approximately **338 acres**, all as more particularly outlined on a plat on file in the Office of Mineral Resources, Department of Natural Resources. All bearings, distances and coordinates are based on Louisiana Coordinate System of 1927, (North or South Zone), where applicable.

NOTE: The above description of the Tract nominated for lease has been provided and corrected, where required, exclusively by the nomination party. Any mineral lease selected from this Tract and awarded by the Louisiana State Mineral Board shall be without warranty of any kind, either express, implied, or statutory, including, but not limited to, the implied warranties of merchantability and fitness for a particular purpose. Should the mineral lease awarded by the Louisiana State Mineral Board be subsequently modified, cancelled or abrogated due to the existence of conflicting leases, operating agreements, private claims or other future obligations or conditions which may affect all or any portion of the leased Tract, it shall not relieve the Lessee of the obligation to pay any bonus due thereon to the Louisiana State Mineral Board, nor shall the Louisiana State Mineral Board be obligated to refund any consideration paid by the Lessor prior to such modification, cancellation, or abrogation, including, but not limited to, bonuses, rentals and royalties.

Bidder	Cash Payment	Price/Acre	Rental	Oil	Gas	Other

Applicant: SPICE ISLAND OPERATORS



TRACT 40453 - St. Martin Parish, Louisiana

All of the lands now or formerly constituting the beds and bottoms of all water bodies of every nature and description as to which title is vested in the State of Louisiana, together with all islands arising therein and other lands formed by accretion or by reliction, where allowed by law, excepting tax adjudicated lands, and not presently under mineral lease on November 12, 2008, situated in St. Martin Parish, Louisiana, and more particularly described as follows: Beginning at a point having Coordinates of X = 1,932,391.00 and Y = 556,449.00; thence East 5,332.00 feet to a point having Coordinates of X = 1,937,723.00 and Y = 556,449.00; thence South 5,720.00 feet to a point having Coordinates of X = 1,937,723.00 and Y = 550,729.00; thence West 5,332.00 feet to a point having Coordinates of X = 1,932,391.00 and Y = 550,729.00; thence North 5,720.00 feet to the point of beginning, (This lease includes only waterbottoms claimed and owned by the state and specifically excludes any land which the state may claim or own and to which the mineral rights are vested in the state), containing approximately **534 acres**, all as more particularly outlined on a plat on file in the Office of Mineral Resources, Department of Natural Resources. All bearings, distances and coordinates are based on Louisiana Coordinate System of 1927, (North or South Zone), where applicable.

NOTE: The above description of the Tract nominated for lease has been provided and corrected, where required, exclusively by the nomination party. Any mineral lease selected from this Tract and awarded by the Louisiana State Mineral Board shall be without warranty of any kind, either express, implied, or statutory, including, but not limited to, the implied warranties of merchantability and fitness for a particular purpose. Should the mineral lease awarded by the Louisiana State Mineral Board be subsequently modified, cancelled or abrogated due to the existence of conflicting leases, operating agreements, private claims or other future obligations or conditions which may affect all or any portion of the leased Tract, it shall not relieve the Lessee of the obligation to pay any bonus due thereon to the Louisiana State Mineral Board, nor shall the Louisiana State Mineral Board be obligated to refund any consideration paid by the Lessor prior to such modification, cancellation, or abrogation, including, but not limited to, bonuses, rentals and royalties.

Bidder	Cash Payment	Price/Acre	Rental	Oil	Gas	Other

Applicant: SPICE ISLAND OPERATORS

ST MARTIN PARISH

P.O.B.

LAKE MONGOULOIS

T10S - R9E



TRACT 40454 - St. Martin Parish, Louisiana

All of the lands now or formerly constituting the beds and bottoms of all water bodies of every nature and description as to which title is vested in the State of Louisiana, together with all islands arising therein and other lands formed by accretion or by reliction, where allowed by law, excepting tax adjudicated lands, and not presently under mineral lease on November 12, 2008, situated in St. Martin Parish, Louisiana, and more particularly described as follows: Beginning at a point having Coordinates of X = 1,937,723.00 and Y = 556,449.00; thence East 3,128.00 feet to a point having Coordinates of X = 1,940,851.00 and Y = 556,449.00; thence South 08 degrees 42 minutes 17 seconds East 944.88 feet to a point having Coordinates of X = 1,940,994.00 and Y = 555,515.00; thence South 16 degrees 26 minutes 29 seconds East 936.28 feet to a point having Coordinates of X = 1,941,259.00 and Y = 554,617.00; thence South 05 degrees 57 minutes 11 seconds East 964.20 feet to a point having Coordinates of X = 1,941,359.00 and Y = 553,658.00; thence East 2,048.00 feet to a point having Coordinates of X = 1,943,407.00 and Y = 553,658.00; thence South 03 degrees 31 minutes 07 seconds East 928.75 feet to a point having Coordinates of X = 1,943,464.00 and Y = 552,731.00; thence South 15 degrees 57 minutes 13 seconds West 964.13 feet to a point having Coordinates of X = 1,943,199.00 and Y = 551,804.00; thence South 04 degrees 14 minutes 42 seconds West 972.67 feet to a point having Coordinates of X = 1,943,127.00 and Y = 550,834.00; thence South 105.00 feet to a point having Coordinates of X = 1,943,127.00 and Y = 550,729.00; thence West 5,404.00 feet to a point having Coordinates of X = 1,937,723.00 and Y = 550,729.00; thence North 5,720.00 feet to the point of beginning, (This lease includes only waterbottoms claimed and owned by the state and specifically excludes any land which the state may claim or own and to which the mineral rights are vested in the state), containing approximately **208 acres**, all as more particularly outlined on a plat on file in the Office of Mineral Resources, Department of Natural Resources. All bearings, distances and coordinates are based on Louisiana Coordinate System of 1927, (North or South Zone), where applicable.

NOTE: The above description of the Tract nominated for lease has been provided and corrected, where required, exclusively by the nomination party. Any mineral lease selected from this Tract and awarded by the Louisiana State Mineral Board shall be without warranty of any kind, either express, implied, or statutory, including, but not limited to, the implied warranties of merchantability and fitness for a particular purpose. Should the mineral lease awarded by the Louisiana State Mineral Board be subsequently modified, cancelled or abrogated due to the existence of conflicting leases, operating agreements, private claims or other future obligations or conditions which may affect all or any portion of the leased Tract, it shall not relieve the Lessee of the obligation to pay any bonus due thereon to the Louisiana State Mineral Board, nor shall the Louisiana State Mineral Board be obligated to refund any consideration paid by the Lessor prior to such modification, cancellation, or abrogation, including, but not limited to, bonuses, rentals and royalties.

Applicant: SPICE ISLAND OPERATORS

Bidder	Cash Payment	Price/Acre	Rental	Oil	Gas	Other

ST MARTIN PARISH

T10S - R9E

P.O.B.

LAKE MONGOULOIS



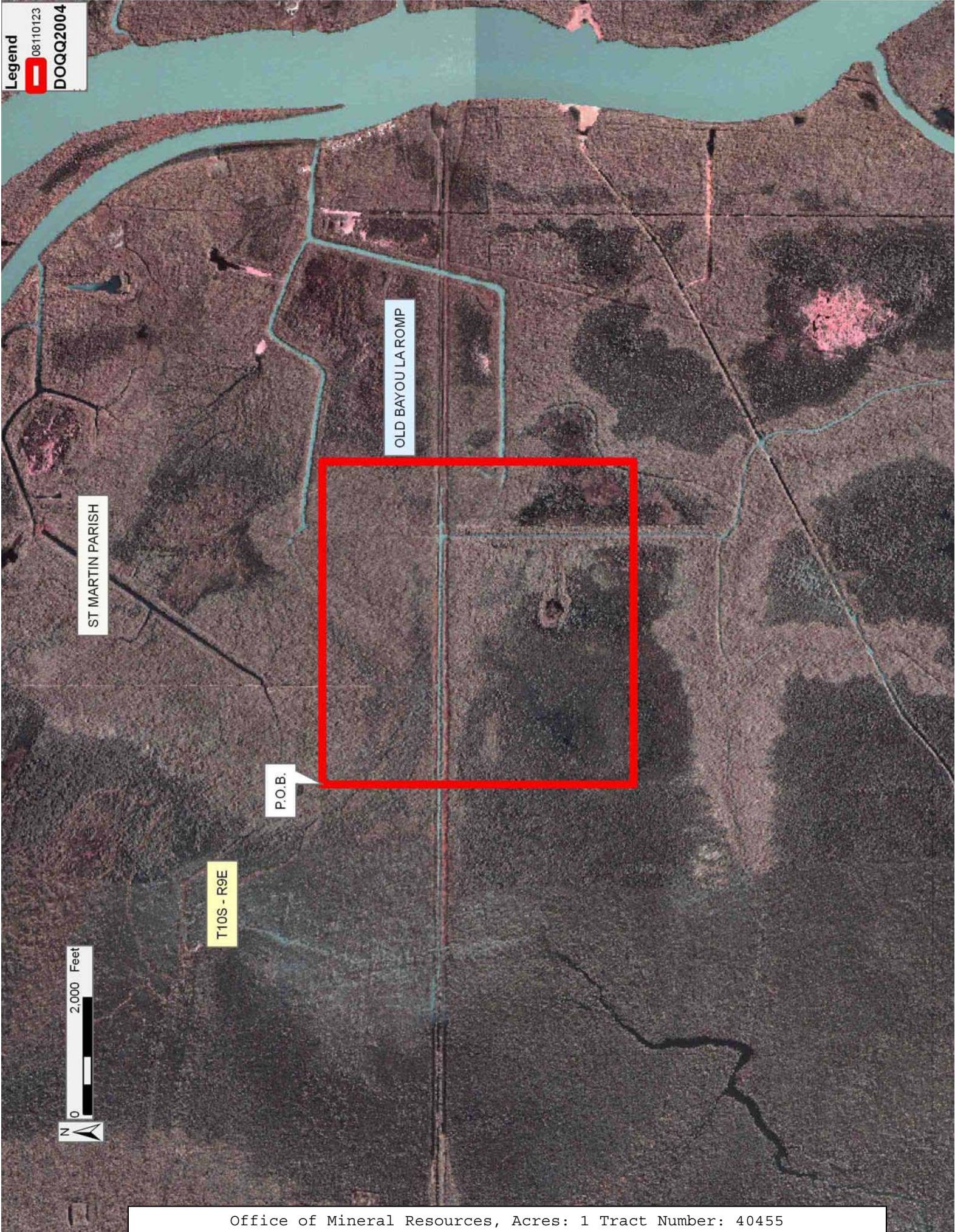
TRACT 40455 - St. Martin Parish, Louisiana

All of the lands now or formerly constituting the beds and bottoms of all water bodies of every nature and description as to which title is vested in the State of Louisiana, together with all islands arising therein and other lands formed by accretion or by reliction, where allowed by law, excepting tax adjudicated lands, and not presently under mineral lease on November 12, 2008, situated in St. Martin Parish, Louisiana, and more particularly described as follows: Beginning at a point having Coordinates of X = 1,926,855.00 and Y = 550,729.00; thence East 5,536.00 feet to a point having Coordinates of X = 1,932,391.00 and Y = 550,729.00; thence South 5,332.00 feet to a point having Coordinates of X = 1,932,391.00 and Y = 545,397.00; thence West 5,536.00 feet to a point having Coordinates of X = 1,926,855.00 and Y = 545,397.00; thence North 5,332.00 feet to the point of beginning, (This lease includes only waterbottoms claimed and owned by the state and specifically excludes any land which the state may claim or own and to which the mineral rights are vested in the state), containing approximately **1 acre**, all as more particularly outlined on a plat on file in the Office of Mineral Resources, Department of Natural Resources. All bearings, distances and coordinates are based on Louisiana Coordinate System of 1927, (North or South Zone), where applicable.

NOTE: The above description of the Tract nominated for lease has been provided and corrected, where required, exclusively by the nomination party. Any mineral lease selected from this Tract and awarded by the Louisiana State Mineral Board shall be without warranty of any kind, either express, implied, or statutory, including, but not limited to, the implied warranties of merchantability and fitness for a particular purpose. Should the mineral lease awarded by the Louisiana State Mineral Board be subsequently modified, cancelled or abrogated due to the existence of conflicting leases, operating agreements, private claims or other future obligations or conditions which may affect all or any portion of the leased Tract, it shall not relieve the Lessee of the obligation to pay any bonus due thereon to the Louisiana State Mineral Board, nor shall the Louisiana State Mineral Board be obligated to refund any consideration paid by the Lessor prior to such modification, cancellation, or abrogation, including, but not limited to, bonuses, rentals and royalties.

Applicant: SPICE ISLAND OPERATORS

Bidder	Cash Payment	Price/Acre	Rental	Oil	Gas	Other



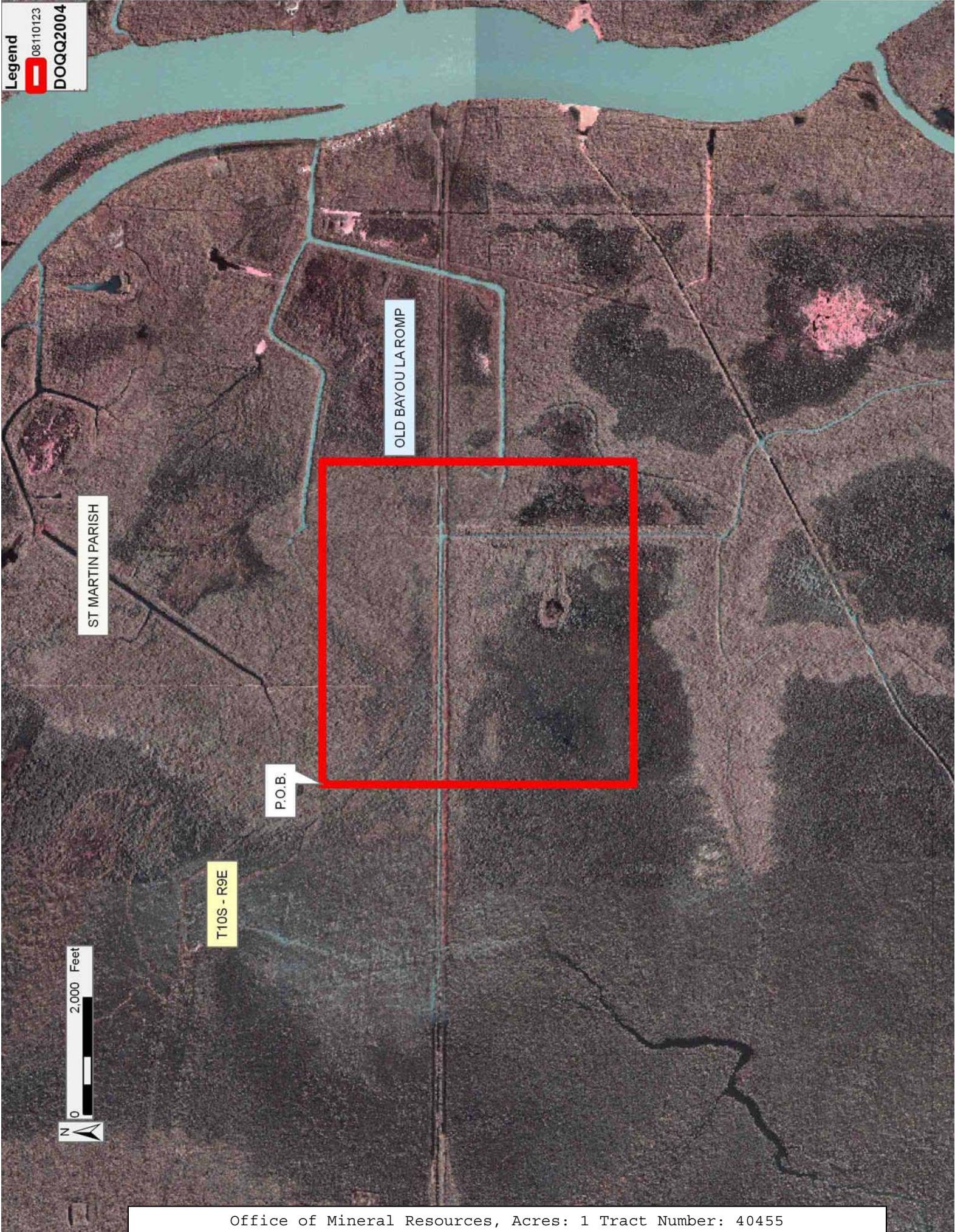
ST MARTIN PARISH

OLD BAYOU LA ROMP

P.O.B.

T10S - R9E





ST MARTIN PARISH

OLD BAYOU LA ROMP

P.O.B.

T10S - R9E

