

TRACT 40436 - Webster Parish, Louisiana

All of the lands now or formerly constituting the beds and bottoms of all water bodies of every nature and description as to which title is vested in the State of Louisiana, together with all islands arising therein and other lands formed by accretion or by reliction, where allowed by law, excepting tax adjudicated lands, and not presently under mineral lease on November 12, 2008, situated in Webster Parish, Louisiana, and more particularly described as follows: Beginning at a point having Coordinates of X = 1,735,540.80 and Y = 676,933.40; thence North 45 degrees 00 minutes 00 seconds East 8,437.34 feet to a point having Coordinates of X = 1,741,506.90 and Y = 682,899.50; thence East 5,000.00 feet to a point having Coordinates of X = 1,746,506.90 and Y = 682,899.50; thence South 45 degrees 00 minutes 00 seconds East 13,500.00 feet to a point having Coordinates of X = 1,756,052.84 and Y = 673,353.56; thence South 17,150.76 feet to a point having Coordinates of X = 1,756,052.84 and Y = 656,202.80; thence West 8,538.79 feet to a point having Coordinates of X = 1,747,514.05 and Y = 656,202.80; thence North 10,792.86 feet to a point having Coordinates of X = 1,747,514.05 and Y = 666,995.66; thence West 11,973.25 feet to a point having Coordinates of X = 1,735,540.80 and Y = 666,995.66; thence North 9,937.74 feet to the point of beginning, **LESS AND EXCEPT** that portion, if any, of the claimable state acreage of Lake Bistineau which may lie within the above described tract, (This tract includes only waterbottoms claimed and owned by the state and specifically excludes any land which the state may claim or own and to which the mineral rights are vested in the state), the above described tract containing approximately **82 acres**, all as more particularly outlined on a plat on file in the Office of Mineral Resources, Department of Natural Resources. All bearings, distances and coordinates are based on Louisiana Coordinate System of 1927, (North or South Zone), where applicable.

NOTE: The above description of the Tract nominated for lease has been provided and corrected, where required, exclusively by the nomination party. Any mineral lease selected from this Tract and awarded by the Louisiana State Mineral Board shall be without warranty of any kind, either express, implied, or statutory, including, but not limited to, the implied warranties of merchantability and fitness for a particular purpose. Should the mineral lease awarded by the Louisiana State Mineral Board be subsequently modified, cancelled or abrogated due to the existence of conflicting leases, operating agreements, private claims or other future obligations or conditions which may affect all or any portion of the leased Tract, it shall not relieve the Lessee of the obligation to pay any bonus due thereon to the Louisiana State Mineral Board, nor shall the Louisiana State Mineral Board be obligated to refund any consideration paid by the Lessor prior to such modification, cancellation, or abrogation, including, but not limited to, bonuses, rentals and royalties.

NOTE: The above Tract is located upon a restricted scenic river and all operations in this area must be conducted in strict conformity with the regulations of the Corps of Engineers, U.S. Army.

Applicant: STAFF OFFICE OF MINERAL RESOURCES

Bidder	Cash Payment	Price/ Acre	Rental	Oil	Gas	Other

WEBSTER PARISH

T18N - R9W

BRUSHY CREEK

BAYOU DORCHEAT

P.O.B.

T17N - R10W

0 4,000 Feet

TRACT 40437 - Bossier and Caddo Parishes, Louisiana

All of the lands now or formerly constituting the beds and bottoms of all water bodies of every nature and description as to which title is vested in the State of Louisiana, together with all islands arising therein and other lands formed by accretion or by reliction, where allowed by law, excepting tax adjudicated lands, and not presently under mineral lease on November 12, 2008, situated in Bossier and Caddo Parishes, Louisiana, and more particularly described as follows: Beginning at a point having Coordinates of X = 1,614,260.00 and Y = 668,906.70; thence East 15,840.00 feet to a point having Coordinates of X = 1,630,100.00 and Y = 668,906.70; thence South 16,542.03 feet to the Northwest corner of State Lease No. 19349 having Coordinates of X = 1,630,100.00 and Y = 652,364.67; thence West 15,840.00 feet to a point having Coordinates of X = 1,614,260.00 and Y = 652,364.67; thence North 16,542.03 feet to the point of beginning, (This tract includes only waterbottoms claimed and owned by the state and specifically excludes any land which the state may claim or own and to which the mineral rights are vested in the state), containing approximately **127 acres**, all as more particularly outlined on a plat on file in the Office of Mineral Resources, Department of Natural Resources. All bearings, distances and coordinates are based on Louisiana Coordinate System of 1927, (North or South Zone), where applicable.

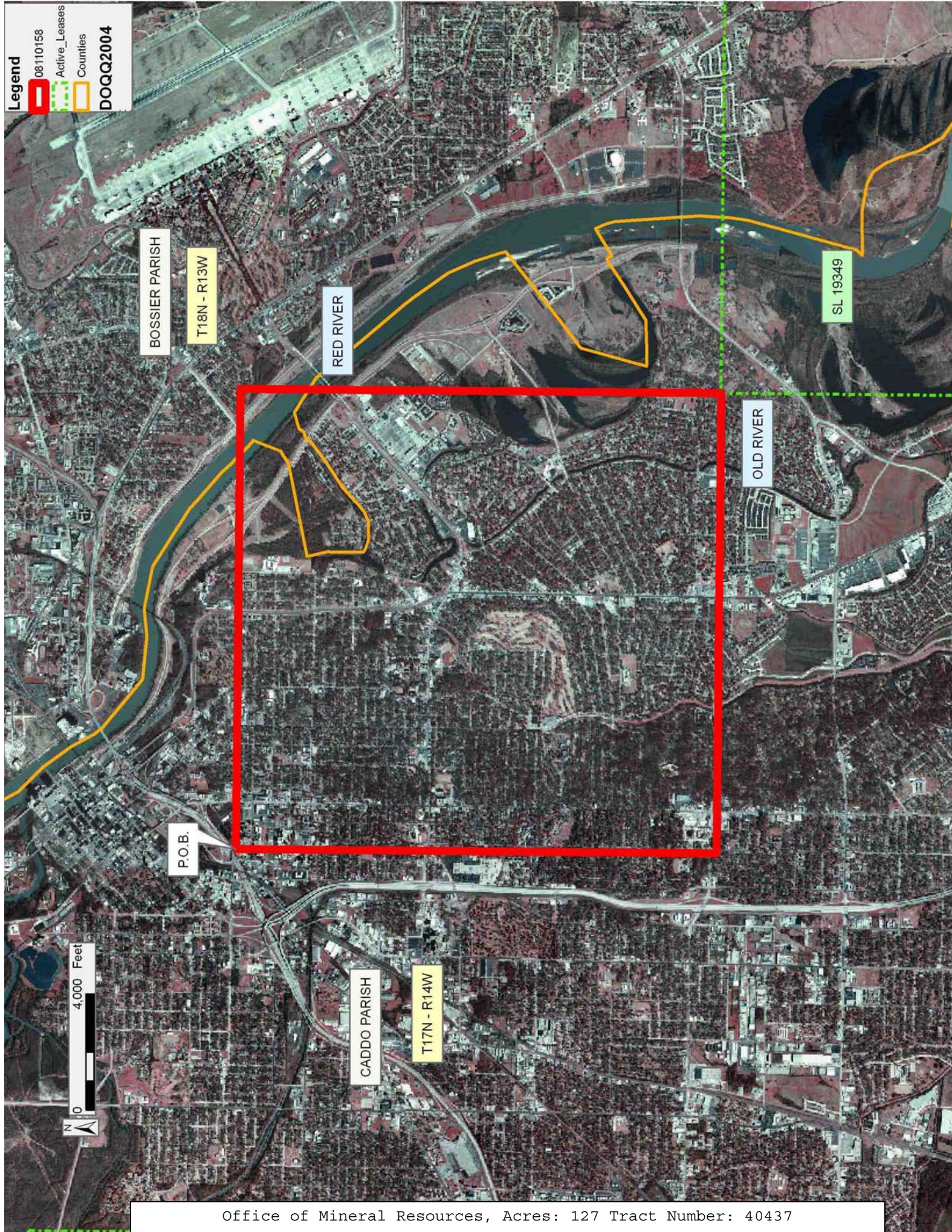
NOTE: The above description of the Tract nominated for lease has been provided and corrected, where required, exclusively by the nomination party. Any mineral lease selected from this Tract and awarded by the Louisiana State Mineral Board shall be without warranty of any kind, either express, implied, or statutory, including, but not limited to, the implied warranties of merchantability and fitness for a particular purpose. Should the mineral lease awarded by the Louisiana State Mineral Board be subsequently modified, cancelled or abrogated due to the existence of conflicting leases, operating agreements, private claims or other future obligations or conditions which may affect all or any portion of the leased Tract, it shall not relieve the Lessee of the obligation to pay any bonus due thereon to the Louisiana State Mineral Board, nor shall the Louisiana State Mineral Board be obligated to refund any consideration paid by the Lessor prior to such modification, cancellation, or abrogation, including, but not limited to, bonuses, rentals and royalties.

Bidder	Cash Payment	Price/ Acre	Rental	Oil	Gas	Other

Applicant: STAFF OFFICE OF MINERAL RESOURCES

Legend

- 08110158
- Active_Leases
- Counties
- DOQQ2004



TRACT 40438 - Bossier and Caddo Parishes, Louisiana

All of the lands now or formerly constituting the beds and bottoms of all water bodies of every nature and description as to which title is vested in the State of Louisiana, together with all islands arising therein and other lands formed by accretion or by reliction, where allowed by law, excepting tax adjudicated lands, and not presently under mineral lease on November 12, 2008, situated in Bossier and Caddo Parishes, Louisiana, and more particularly described as follows: Beginning at a point having Coordinates of X = 1,630,100.00 and Y = 668,906.70; thence East 15,628.17 feet to a point being the Northwest corner of State Lease No. 19574 having Coordinates of X = 1,645,728.17 and Y = 668,906.70; thence South 16,542.03 feet along the boundary of said State Lease No. 19574 to its Southwest corner also being the Northeast corner of State Lease No. 19349 having Coordinates of X = 1,645,728.17 and Y = 652,364.67; thence West 15,628.17 feet along the North boundary of said State Lease No. 19349 to its Northwest corner having Coordinates of X = 1,630,100.00 and Y = 652,364.67; thence North 16,542.03 feet to the point of beginning, (This tract includes only waterbottoms claimed and owned by the state and specifically excludes any land which the state may claim or own and to which the mineral rights are vested in the state), containing approximately **437 acres**, all as more particularly outlined on a plat on file in the Office of Mineral Resources, Department of Natural Resources. All bearings, distances and coordinates are based on Louisiana Coordinate System of 1927, (North or South Zone), where applicable.

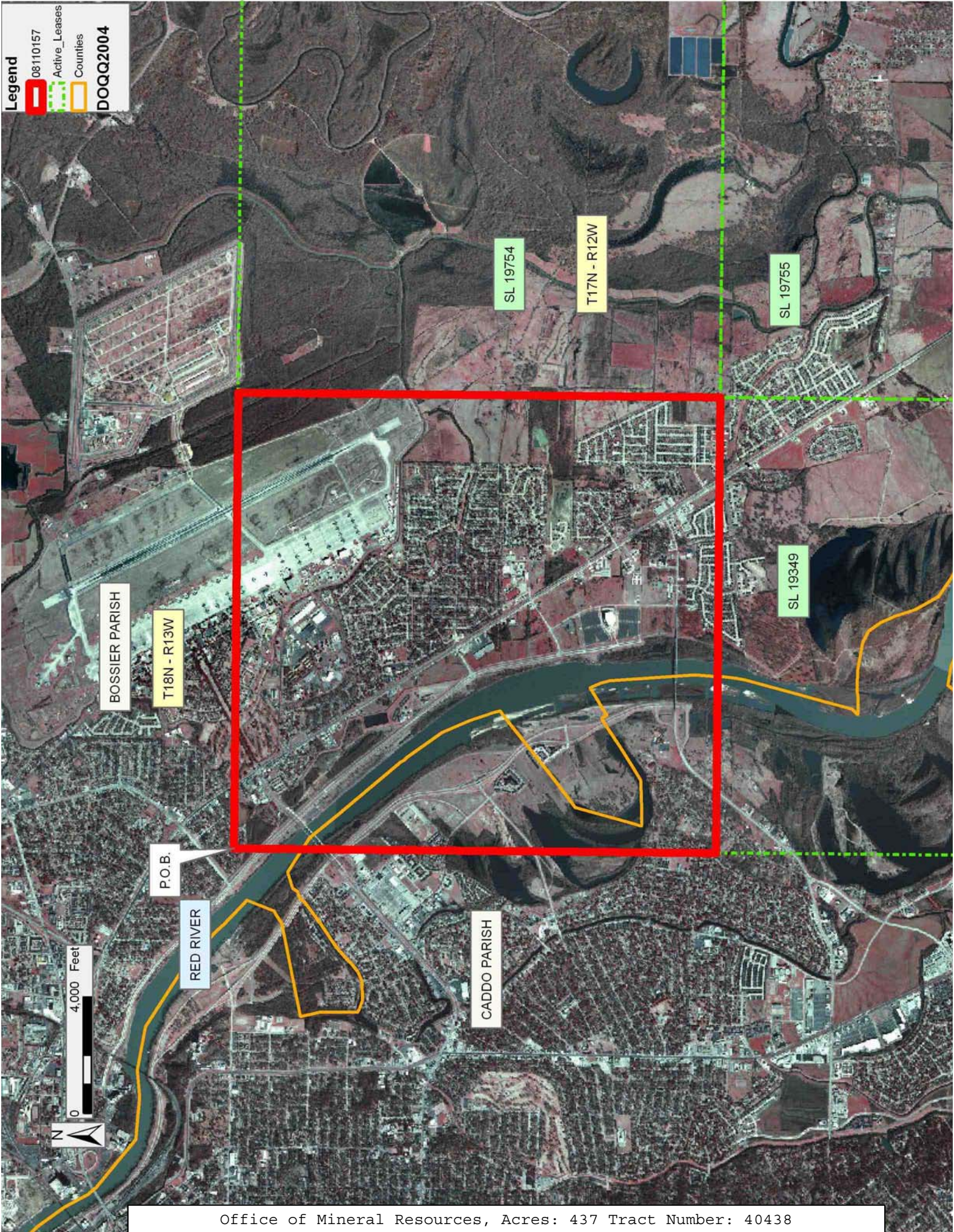
NOTE: The above description of the Tract nominated for lease has been provided and corrected, where required, exclusively by the nomination party. Any mineral lease selected from this Tract and awarded by the Louisiana State Mineral Board shall be without warranty of any kind, either express, implied, or statutory, including, but not limited to, the implied warranties of merchantability and fitness for a particular purpose. Should the mineral lease awarded by the Louisiana State Mineral Board be subsequently modified, cancelled or abrogated due to the existence of conflicting leases, operating agreements, private claims or other future obligations or conditions which may affect all or any portion of the leased Tract, it shall not relieve the Lessee of the obligation to pay any bonus due thereon to the Louisiana State Mineral Board, nor shall the Louisiana State Mineral Board be obligated to refund any consideration paid by the Lessor prior to such modification, cancellation, or abrogation, including, but not limited to, bonuses, rentals and royalties.

Applicant: STAFF OFFICE OF MINERAL RESOURCES

Bidder	Cash Payment	Price/ Acre	Rental	Oil	Gas	Other

Legend

- 08110157
- Active_Leases
- Counties
- DOQQ2004



TRACT 40439 - Caddo Parish, Louisiana

All of the lands now or formerly constituting the beds and bottoms of all water bodies of every nature and description as to which title is vested in the State of Louisiana, together with all islands arising therein and other lands formed by accretion or by reliction, where allowed by law, excepting tax adjudicated lands, and not presently under mineral lease on November 12, 2008, situated in Caddo Parish, Louisiana, and more particularly described as follows: Beginning at a point having Coordinates of X = 1,614,260.00 and Y = 652,364.67; thence East 15,840.00 feet to the Northwest corner of State Lease No. 19349 having Coordinates of X = 1,630,100.00 and Y = 652,364.67; thence South 13,564.67 feet along the West boundary of said State Lease No. 19349 to its Southwest corner, also being the Northwest corner of State Lease No. 11155, as amended, having Coordinate of X = 1,630,100.00 and Y = 638,800.00; thence South 1,681.21 feet along the West boundary of said State Lease No. 11155 to a point having Coordinates of X = 1,630,100.00 and Y = 637,118.79; thence Westerly approximately 2,325 feet to the Northeast corner of State Lease No. 6316, as amended; thence Westerly approximately 7,540 feet along the North boundary of said State Lease No. 6316 to its Northwest corner also being the Northeast corner of State Lease No. 19757; thence Westerly approximately 5,973 feet along the Northern boundary of said State Lease No. 19757 to its Northwest corner having Coordinates of X = 1,614,260.00 and Y = 637,320.80; thence North 15,043.87 feet to the point of beginning, (This tract includes only waterbottoms claimed and owned by the state and specifically excludes any land which the state may claim or own and to which the mineral rights are vested in the state), containing approximately **69 acres**, all as more particularly outlined on a plat on file in the Office of Mineral Resources, Department of Natural Resources. All bearings, distances and coordinates are based on Louisiana Coordinate System of 1927, (North or South Zone), where applicable.

NOTE: The above description of the Tract nominated for lease has been provided and corrected, where required, exclusively by the nomination party. Any mineral lease selected from this Tract and awarded by the Louisiana State Mineral Board shall be without warranty of any kind, either express, implied, or statutory, including, but not limited to, the implied warranties of merchantability and fitness for a particular purpose. Should the mineral lease awarded by the Louisiana State Mineral Board be subsequently modified, cancelled or abrogated due to the existence of conflicting leases, operating agreements, private claims or other future obligations or conditions which may affect all or any portion of the leased Tract, it shall not relieve the Lessee of the obligation to pay any bonus due thereon to the Louisiana State Mineral Board, nor shall the Louisiana State Mineral Board be obligated to refund any consideration paid by the Lessor prior to such modification, cancellation, or abrogation, including, but not limited to, bonuses, rentals and royalties.

Applicant: STAFF OFFICE OF MINERAL RESOURCES

Bidder	Cash Payment	Price/ Acre	Rental	Oil	Gas	Other

Legend
08110159
Active_Leases
DOQQ2004



TRACT 40440 - Webster Parish, Louisiana

All of the lands now or formerly constituting the beds and bottoms of all water bodies of every nature and description as to which title is vested in the State of Louisiana, together with all islands arising therein and other lands formed by accretion or by reliction, where allowed by law, excepting tax adjudicated lands, and not presently under mineral lease on November 12, 2008, situated in Webster Parish, Louisiana, and more particularly described as follows: Beginning at a point having Coordinates of X = 1,716,162.23 and Y = 648,400.00; thence East 4,000.00 feet to a point having Coordinates of X = 1,720,162.23 and Y = 648,400.00; thence South 2,000.00 feet to a point on the North boundary of State Lease No. 19542 having Coordinates of X = 1,720,162.23 and Y = 646,400.00; thence West 162.23 feet along the North boundary of said State Lease No. 19542 to its Northwest corner having Coordinates of X = 1,720,000.00 and Y = 646,400.00; thence West 3,837.77 feet to a point having Coordinates of X = 1,716,162.23 and Y = 646,400.00; thence North 2,000.00 feet to the point of beginning, **LESS AND EXCEPT** that portion, if any, of the claimable state acreage of Lake Bistineau which may lie within the above described tract, the above described tract containing approximately **6 acres**, all as more particularly outlined on a plat on file in the Office of Mineral Resources, Department of Natural Resources. All bearings, distances and coordinates are based on Louisiana Coordinate System of 1927, (North or South Zone), where applicable.

NOTE: The above description of the Tract nominated for lease has been provided and corrected, where required, exclusively by the nomination party. Any mineral lease selected from this Tract and awarded by the Louisiana State Mineral Board shall be without warranty of any kind, either express, implied, or statutory, including, but not limited to, the implied warranties of merchantability and fitness for a particular purpose. Should the mineral lease awarded by the Louisiana State Mineral Board be subsequently modified, cancelled or abrogated due to the existence of conflicting leases, operating agreements, private claims or other future obligations or conditions which may affect all or any portion of the leased Tract, it shall not relieve the Lessee of the obligation to pay any bonus due thereon to the Louisiana State Mineral Board, nor shall the Louisiana State Mineral Board be obligated to refund any consideration paid by the Lessor prior to such modification, cancellation, or abrogation, including, but not limited to, bonuses, rentals and royalties.

Applicant: STAFF OFFICE OF MINERAL RESOURCES

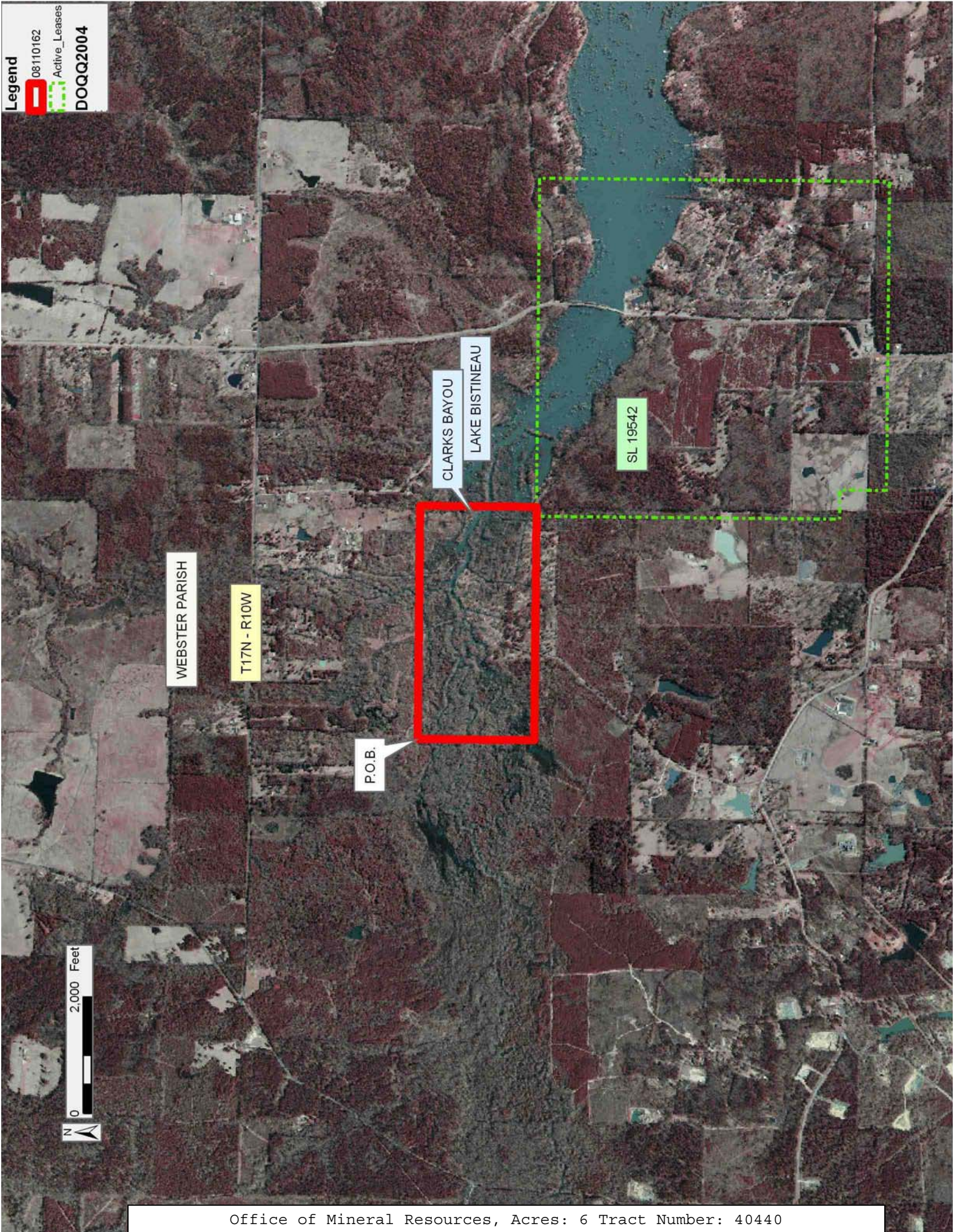
Bidder	Cash Payment	Price/ Acre	Rental	Oil	Gas	Other

Legend

08110162

Active_Leases

DOQQ2004



TRACT 40441 - Caddo Parish, Louisiana

All of the lands now or formerly constituting the beds and bottoms of all water bodies of every nature and description as to which title is vested in the State of Louisiana, together with all islands arising therein and other lands formed by accretion or by reliction, where allowed by law, excepting tax adjudicated lands, and not presently under mineral lease on November 12, 2008, situated in Caddo Parish, Louisiana, and more particularly described as follows: Beginning at a point being a point on the Eastern boundary of State Lease No. 19757 having Coordinates of X = 1,630,101.90 and Y = 626,500.00; thence Northerly approximately 5,319 feet along the Eastern boundary of said State Lease No. 19757 to its Northeast corner also being the Southeast corner of State Lease No. 6316, as amended; thence Northerly approximately 2,147 feet along the East boundary of said State Lease No. 6316 to its point of intersection with the Southwest boundary or a projection thereof of State Lease No. 11555, as amended; thence South 36 degrees 52 minutes 12 seconds East approximately 2,733 feet along the Southwest boundary or a projection thereof of said State Lease No. 11555 to its Southernmost Southwest corner, said point also being the Northwest corner of State Lease No. 11855 having Coordinates of X = 1,631,740.00 and Y = 631,780.00; thence South 36 degrees 52 minutes 12 seconds East 6,600.00 feet along the Southwest boundary of said State Lease No. 11855 to its Southernmost corner, also being the Northeast corner of State Lease No. 19121, as amended, having Coordinates of X = 1,635,700.00 and Y = 626,500.00; thence West 5,047.55 feet along the North boundary of said State Lease No. 19121 to its Northwest corner having Coordinates of X = 1,630,652.45 and Y = 626,500.00; thence West 550.55 feet to the point of beginning, **LESS AND EXCEPT** that portion, if any, of State Lease No. 6316, as amended, and State Lease No. 11155, as amended, that may lie within the above described tract, containing approximately **5 acres**, all as more particularly outlined on a plat on file in the Office of Mineral Resources, Department of Natural Resources. All bearings, distances and coordinates are based on Louisiana Coordinate System of 1927, (North or South Zone), where applicable.

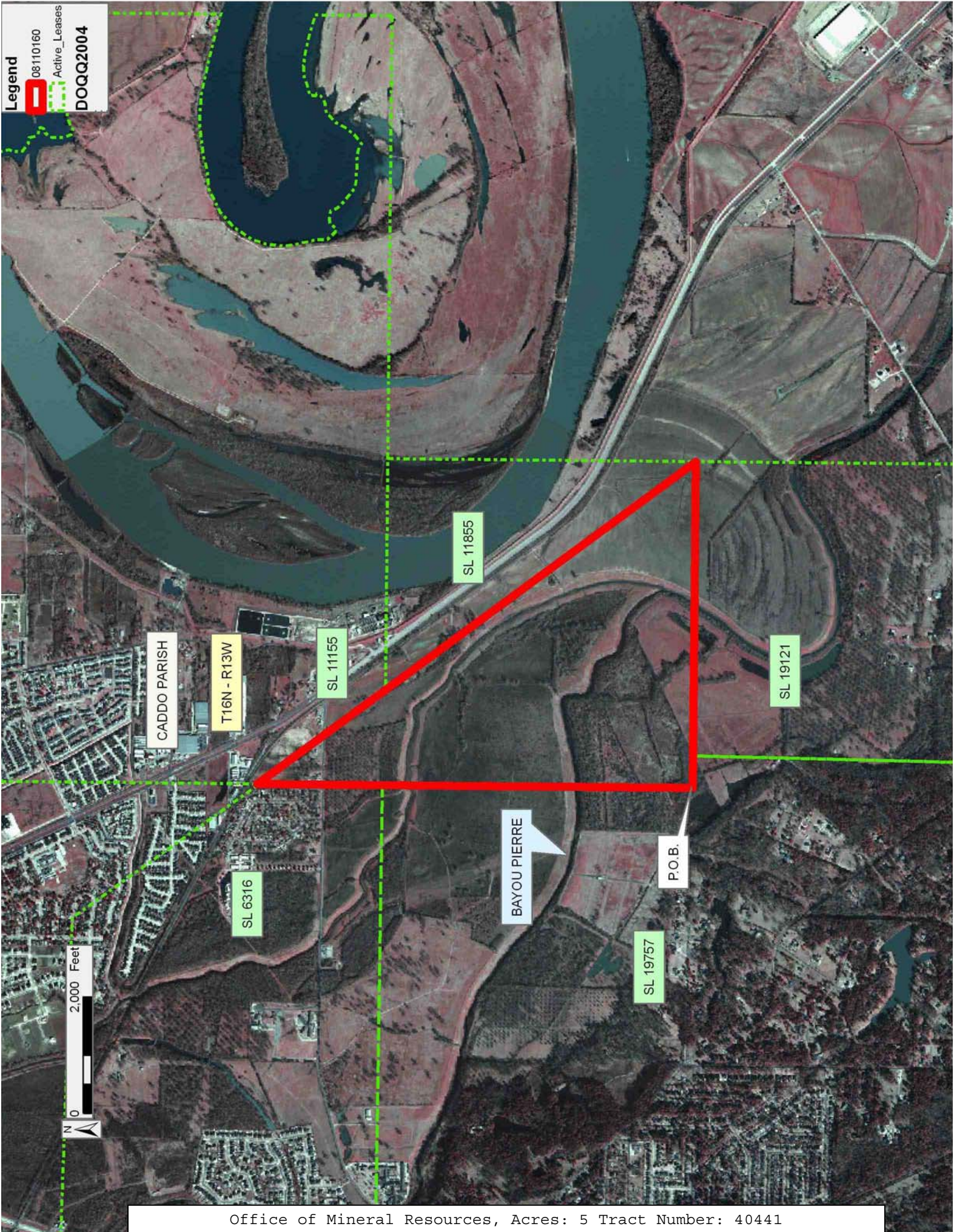
NOTE: The above description of the Tract nominated for lease has been provided and corrected, where required, exclusively by the nomination party. Any mineral lease selected from this Tract and awarded by the Louisiana State Mineral Board shall be without warranty of any kind, either express, implied, or statutory, including, but not limited to, the implied warranties of merchantability and fitness for a particular purpose. Should the mineral lease awarded by the Louisiana State Mineral Board be subsequently modified, cancelled or abrogated due to the existence of conflicting leases, operating agreements, private claims or other future obligations or conditions which may affect all or any portion of the leased Tract, it shall not relieve the Lessee of the obligation to pay any bonus due thereon to the Louisiana State Mineral Board, nor shall the Louisiana State Mineral Board be obligated to refund any consideration

paid by the Lessor prior to such modification, cancellation, or abrogation, including, but not limited to, bonuses, rentals and royalties.

Applicant: STAFF OFFICE OF MINERAL RESOURCES

Bidder	Cash Payment	Price/ Acre	Rental	Oil	Gas	Other

Legend
08110160
Active_Leases
DOQQ2004



TRACT 40442 - Caddo and De Soto Parishes, Louisiana

All of the lands now or formerly constituting the beds and bottoms of all water bodies of every nature and description as to which title is vested in the State of Louisiana, together with all islands arising therein and other lands formed by accretion or by reliction, where allowed by law, excepting tax adjudicated lands, and not presently under mineral lease on November 12, 2008, situated in Caddo and De Soto Parishes, Louisiana, and more particularly described as follows: Beginning at a point being the Northeast corner of State Lease No. 18368 having Coordinates of X = 1,625,175.73 and Y = 610,828.48; thence South 89 degrees 04 minutes 58 seconds East 10,525.62 feet to the Southwest corner of State Lease No. 16717 having Coordinates of X = 1,635,700.00 and Y = 610,660.00; thence South 5,280.00 feet to a point having Coordinates of X = 1,635,700.00 and Y = 605,380.00; thence East 323.51 feet to a point being the Northwest corner of State Lease No. 19122 having Coordinates of X = 1,636,023.51 and Y = 605,380.00; thence Southerly along the Western boundary of said State Lease No. 19122 approximately 5,338 feet to its Southwest corner also being the Northeast corner of State Lease No. 16503; thence Westerly and Southerly along the boundary of said State Lease No. 16503 to its Southwest corner; thence Westerly approximately 5,260 feet to a point being the Southeast corner of State Lease No. 18371 having Coordinates of X = 1,625,373.03 and Y = 594,854.37; thence along the boundary of said State Lease No. 18371 the following courses: North 01 degrees 19 minutes 37 seconds East 10,437.23 feet having Coordinates of X = 1,625,614.75 and Y = 605,288.81 and North 89 degrees 03 minutes 50 seconds West 532.13 feet to a point being the Southeastern corner of said State Lease No. 18368 having Coordinates of X = 1,625,082.70 and Y = 605,297.50; thence North 00 degrees 57 minutes 49 seconds East 5,531.76 feet along the Eastern boundary of said State Lease No. 18368 to the point of beginning, containing approximately **346 acres**, all as more particularly outlined on a plat on file in the Office of Mineral Resources, Department of Natural Resources. All bearings, distances and coordinates are based on Louisiana Coordinate System of 1927, (North or South Zone), where applicable.

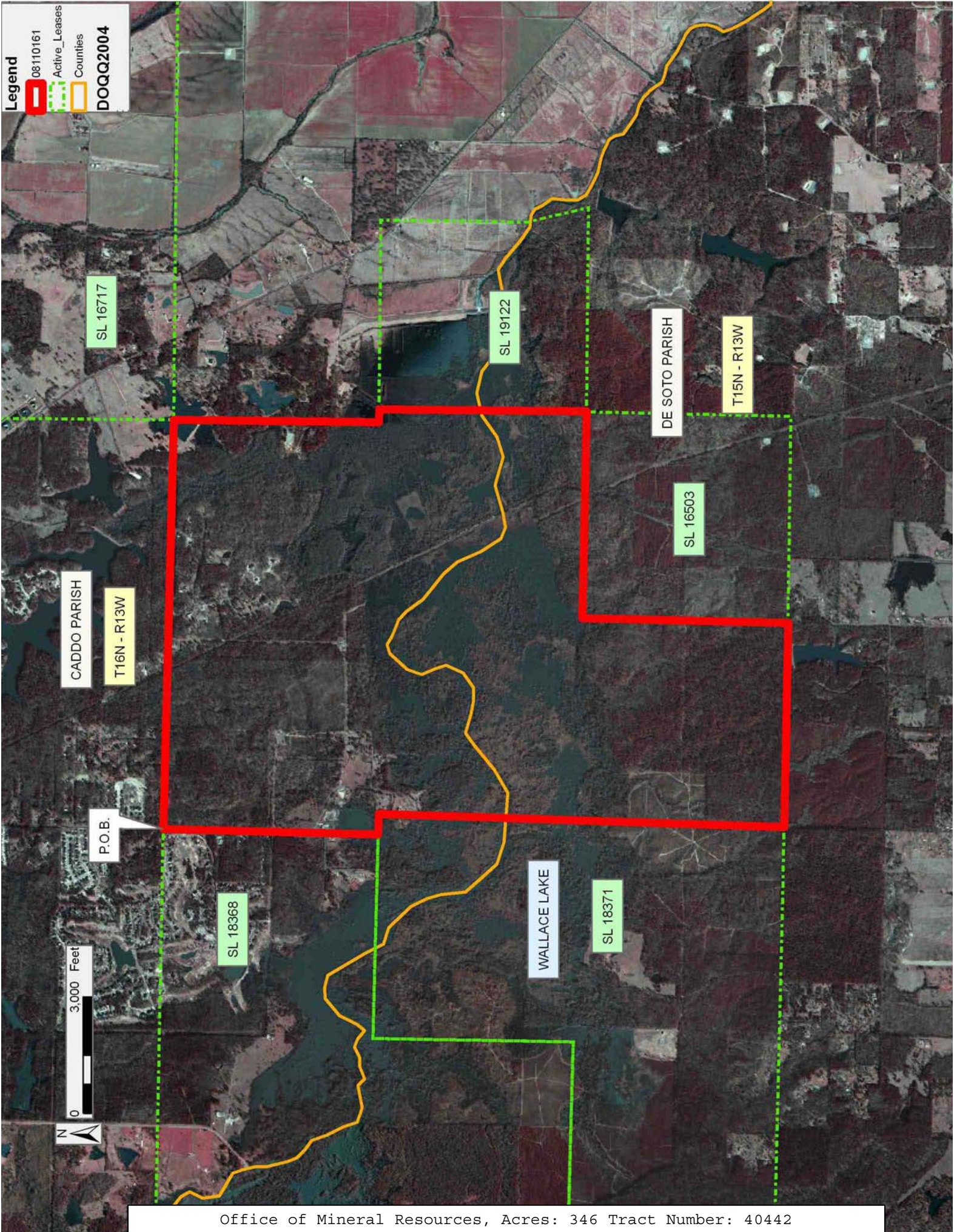
NOTE: The above description of the Tract nominated for lease has been provided and corrected, where required, exclusively by the nomination party. Any mineral lease selected from this Tract and awarded by the Louisiana State Mineral Board shall be without warranty of any kind, either express, implied, or statutory, including, but not limited to, the implied warranties of merchantability and fitness for a particular purpose. Should the mineral lease awarded by the Louisiana State Mineral Board be subsequently modified, cancelled or abrogated due to the existence of conflicting leases, operating agreements, private claims or other future obligations or conditions which may affect all or any portion of the leased Tract, it shall not relieve the Lessee of the obligation to pay any bonus due thereon to the Louisiana State Mineral Board, nor shall the Louisiana State Mineral Board be obligated to refund any consideration paid by the Lessor prior to such modification, cancellation, or abrogation, including, but not limited to, bonuses, rentals and royalties.

Applicant: STAFF OFFICE OF MINERAL RESOURCES

Bidder	Cash Payment	Price/ Acre	Rental	Oil	Gas	Other

Legend

- 08110161
- Active_Leases
- Counties
- DOQQ2004



TRACT 40443 - Red River Parish, Louisiana

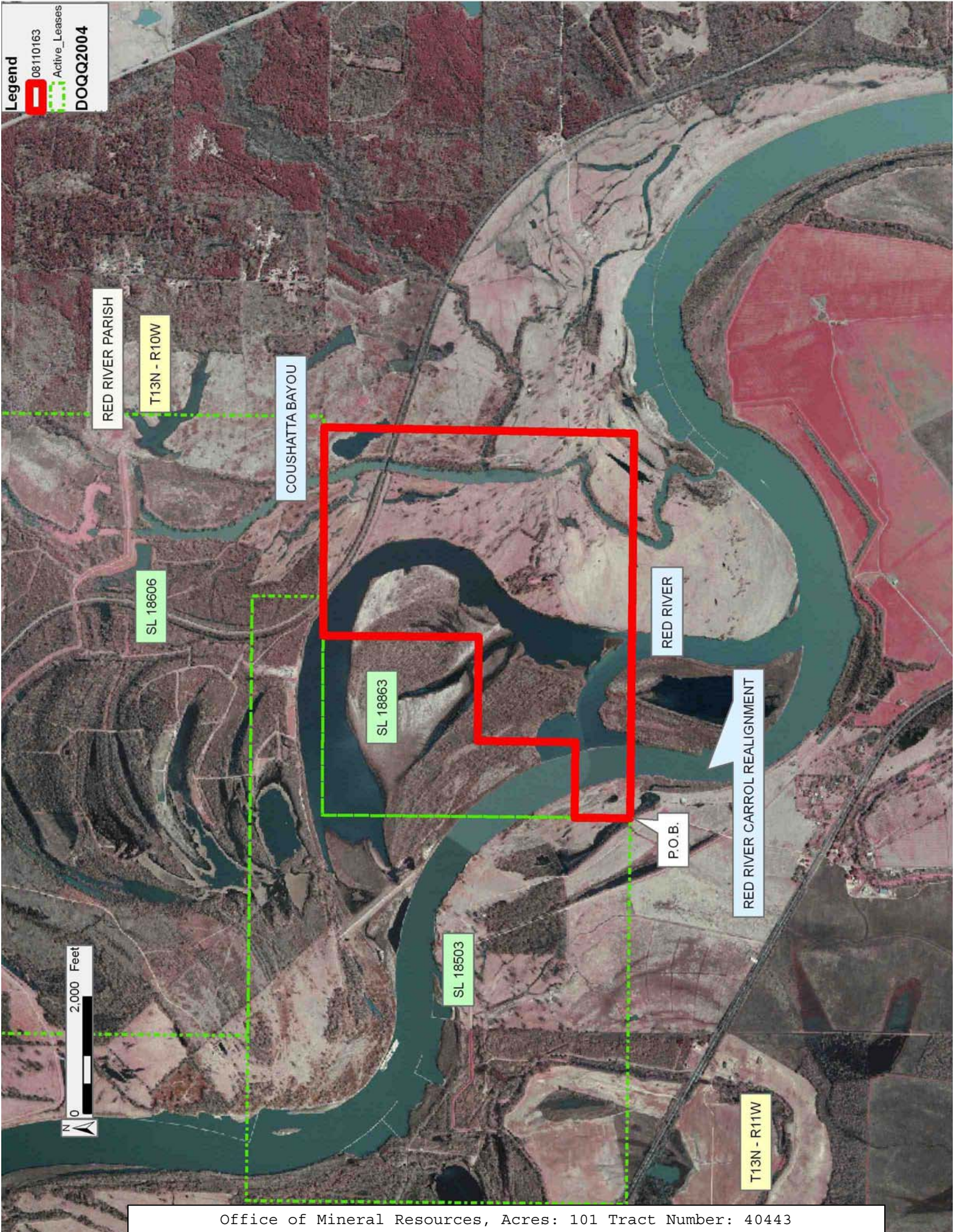
All of the lands now or formerly constituting the beds and bottoms of all water bodies of every nature and description as to which title is vested in the State of Louisiana, together with all islands arising therein and other lands formed by accretion or by reliction, where allowed by law, excepting tax adjudicated lands, and not presently under mineral lease on November 12, 2008, situated in Red River Parish, Louisiana, and more particularly described as follows: Beginning at the Southernmost Southeast corner of State Lease No. 18503 having Coordinates of X = 1,712,346.69 and Y = 513,454.43; thence North approximately 950 feet along the Eastern boundary of said State Lease No. 18503 to the Southwest corner of State Lease No. 18863, as amended, having a Coordinate of X = 1,712,346.69; thence along the boundary of said State Lease No. 18863 the following courses: Easterly approximately 1,323 feet; Northerly approximately 1,680 feet; Easterly approximately 1,785 feet and Northerly approximately 2,649 feet to its Northeast corner, also being a point on the boundary of said State Lease No. 18503; thence Easterly approximately 667 feet along the boundary of said State Lease No. 18503 to its Easternmost Southeast corner, also being the Southernmost Southwest corner of State Lease No. 18606 having Coordinates of X = 1,716,096.35 and Y = 518,755.14; thence North 89 degrees 41 minutes 00 seconds East 2,905.85 feet along the Southern boundary of said State Lease No. 18606 to a point having Coordinates of X = 1,719,002.16 and Y = 518,771.20; thence South 00 degrees 35 minutes 52 seconds West 5,317.06 feet to a point having Coordinates of X = 1,718,946.69 and Y = 513,454.43; thence West 6,600.00 feet to the point of beginning, **LESS AND EXCEPT** that portion, if any of State Lease No. 18503 and State Lease No. 18863, as amended, which may lie within the above described, containing approximately **101 acres**, all as more particularly outlined on a plat on file in the Office of Mineral Resources, Department of Natural Resources. All bearings, distances and coordinates are based on Louisiana Coordinate System of 1927, (North or South Zone), where applicable.

NOTE: The above description of the Tract nominated for lease has been provided and corrected, where required, exclusively by the nomination party. Any mineral lease selected from this Tract and awarded by the Louisiana State Mineral Board shall be without warranty of any kind, either express, implied, or statutory, including, but not limited to, the implied warranties of merchantability and fitness for a particular purpose. Should the mineral lease awarded by the Louisiana State Mineral Board be subsequently modified, cancelled or abrogated due to the existence of conflicting leases, operating agreements, private claims or other future obligations or conditions which may affect all or any portion of the leased Tract, it shall not relieve the Lessee of the obligation to pay any bonus due thereon to the Louisiana State Mineral Board, nor shall the Louisiana State Mineral Board be obligated to refund any consideration paid by the Lessor prior to such modification, cancellation, or abrogation, including, but not limited to, bonuses, rentals and royalties.

Applicant: STAFF OFFICE OF MINERAL RESOURCES

Bidder	Cash Payment	Price/ Acre	Rental	Oil	Gas	Other

Legend
08110163
Active_Leases
DOQQ2004



TRACT 40444 - Concordia Parish, Louisiana

All of the lands now or formerly constituting the beds and bottoms of all water bodies of every nature and description as to which title is vested in the State of Louisiana, together with all islands arising therein and other lands formed by accretion or by reliction, where allowed by law, excepting tax adjudicated lands, and not presently under mineral lease on November 12, 2008, situated in Concordia Parish, Louisiana, and more particularly described as follows: Beginning at the Northeast corner of State Lease No. 19696 having Coordinates of X = 2,309,788.26 and Y = 230,911.90; thence West 5,001.66 feet along the North boundary of said State Lease No. 19696 to its Northwest corner having Coordinates of X = 2,304,786.60 and Y = 230,911.90; thence North 20 degrees 13 minutes 00 seconds East 2,864.58 feet to a point having Coordinates of X = 2,305,776.52 and Y = 233,600.00; thence East 4,011.74 feet to a point having Coordinates of X = 2,309,788.26 and Y = 233,600.00; thence South 2,688.10 feet to the point of beginning, containing approximately **105 acres**, all as more particularly outlined on a plat on file in the Office of Mineral Resources, Department of Natural Resources. All bearings, distances and coordinates are based on Louisiana Coordinate System of 1927, (North or South Zone), where applicable.

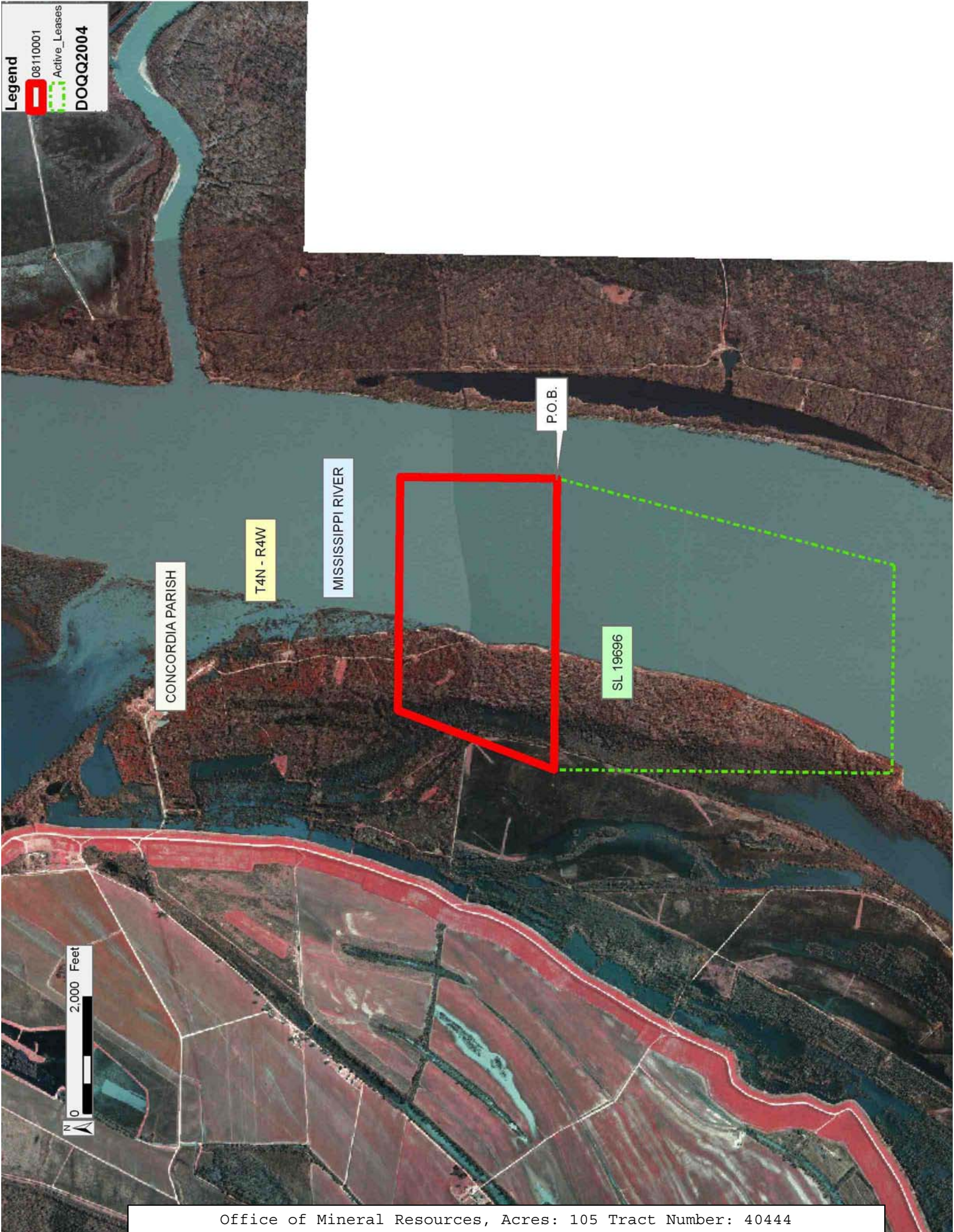
NOTE: The above description of the Tract nominated for lease has been provided and corrected, where required, exclusively by the nomination party. Any mineral lease selected from this Tract and awarded by the Louisiana State Mineral Board shall be without warranty of any kind, either express, implied, or statutory, including, but not limited to, the implied warranties of merchantability and fitness for a particular purpose. Should the mineral lease awarded by the Louisiana State Mineral Board be subsequently modified, cancelled or abrogated due to the existence of conflicting leases, operating agreements, private claims or other future obligations or conditions which may affect all or any portion of the leased Tract, it shall not relieve the Lessee of the obligation to pay any bonus due thereon to the Louisiana State Mineral Board, nor shall the Louisiana State Mineral Board be obligated to refund any consideration paid by the Lessor prior to such modification, cancellation, or abrogation, including, but not limited to, bonuses, rentals and royalties.

Bidder	Cash Payment	Price/ Acre	Rental	Oil	Gas	Other

Applicant: BAY GAS, L.L.C.

Legend

08110001
Active_Leases
DOQQ2004



TRACT 40445 - Concordia Parish, Louisiana

All of the lands now or formerly constituting the beds and bottoms of all water bodies of every nature and description as to which title is vested in the State of Louisiana, together with all islands arising therein and other lands formed by accretion or by reliction, where allowed by law, excepting tax adjudicated lands, and not presently under mineral lease on November 12, 2008, situated in Concordia Parish, Louisiana, and more particularly described as follows: Beginning at the Easternmost corner of State Lease No. 19581 having Coordinates of X = 2,303,683.67 and Y = 221,580.61; thence along the boundary of said State Lease No. 19581 the following courses: North 26 degrees 00 minutes 00 seconds West 1,040.00 feet to a point having Coordinates of X = 2,303,227.76 and Y = 222,515.36 and North 16 degrees 00 minutes 00 seconds West 420.00 feet to the Northernmost corner of said State Lease No. 19581 having Coordinates of X = 2,303,111.99 and Y = 222,919.09; thence North 16 degrees 00 minutes 02 seconds West 881.18 feet to a point having Coordinates of X = 2,302,869.10 and Y = 223,766.13; thence North 55 degrees 00 minutes 00 seconds East 2,340.84 feet to the Southwest corner of State Lease No. 19696 having Coordinates of X = 2,304,786.60 and Y = 225,108.78; thence East 3,573.20 feet along the South boundary of said State Lease No. 19696 to its Southeast corner having Coordinates of X = 2,308,359.80 and Y = 225,108.78; thence South 37 degrees 00 minutes 00 seconds West 6,452.84 feet to a point having Coordinates of X = 2,304,476.38 and Y = 219,955.31; thence North 26 degrees 00 minutes 00 seconds West 1,808.31 feet to the point of beginning, containing approximately **255 acres**, all as more particularly outlined on a plat on file in the Office of Mineral Resources, Department of Natural Resources. All bearings, distances and coordinates are based on Louisiana Coordinate System of 1927, (North or South Zone), where applicable.

NOTE: The above description of the Tract nominated for lease has been provided and corrected, where required, exclusively by the nomination party. Any mineral lease selected from this Tract and awarded by the Louisiana State Mineral Board shall be without warranty of any kind, either express, implied, or statutory, including, but not limited to, the implied warranties of merchantability and fitness for a particular purpose. Should the mineral lease awarded by the Louisiana State Mineral Board be subsequently modified, cancelled or abrogated due to the existence of conflicting leases, operating agreements, private claims or other future obligations or conditions which may affect all or any portion of the leased Tract, it shall not relieve the Lessee of the obligation to pay any bonus due thereon to the Louisiana State Mineral Board, nor shall the Louisiana State Mineral Board be obligated to refund any consideration paid by the Lessor prior to such modification, cancellation, or abrogation, including, but not limited to, bonuses, rentals and royalties.

Applicant: BAY GAS, L.L.C.

Bidder	Cash Payment	Price/ Acre	Rental	Oil	Gas	Other

Legend

08110002

Active_Leases

DOQQ2004

