

TRACT 39464 - Cameron Parish, Louisiana

All lands, including lands added by accretion and reliction and lands now or formerly constituting the beds and bottoms of all water bodies of every nature and description, owned by and not presently under mineral lease as of November 14, 2007 from the State of Louisiana, situated in Cameron Parish, Louisiana, and being more fully described as follows: Beginning at a point on the Louisiana Coastline, as decreed by the Supreme Court of the United States, as determined by a Special Master appointed therein, in litigation styled *United States v. State of Louisiana et al No. 9 Original*, in 1975, having Coordinates of X = 1,288,145.38 and Y = 403,746.45; thence North 592.15 feet to a point having Coordinates of X = 1,288,145.38 and Y = 404,338.60; thence North 82 degrees 00 minutes 51 seconds East 3,299.62 feet to a point having Coordinates of X = 1,291,413.00 and Y = 404,797.00; thence South 592.00 feet to a point on said Louisiana Coastline having Coordinates of X = 1,291,413 and Y = 404,205; thence Southwesterly on a straight line along said Louisiana Coastline to the point of beginning, containing approximately **26 acres**, all as more particularly outlined on a plat on file in the Office of Mineral Resources, Department of Natural Resources. All bearings, distances and coordinates are based on Louisiana Coordinate System of 1927, (North or South Zone), where applicable.

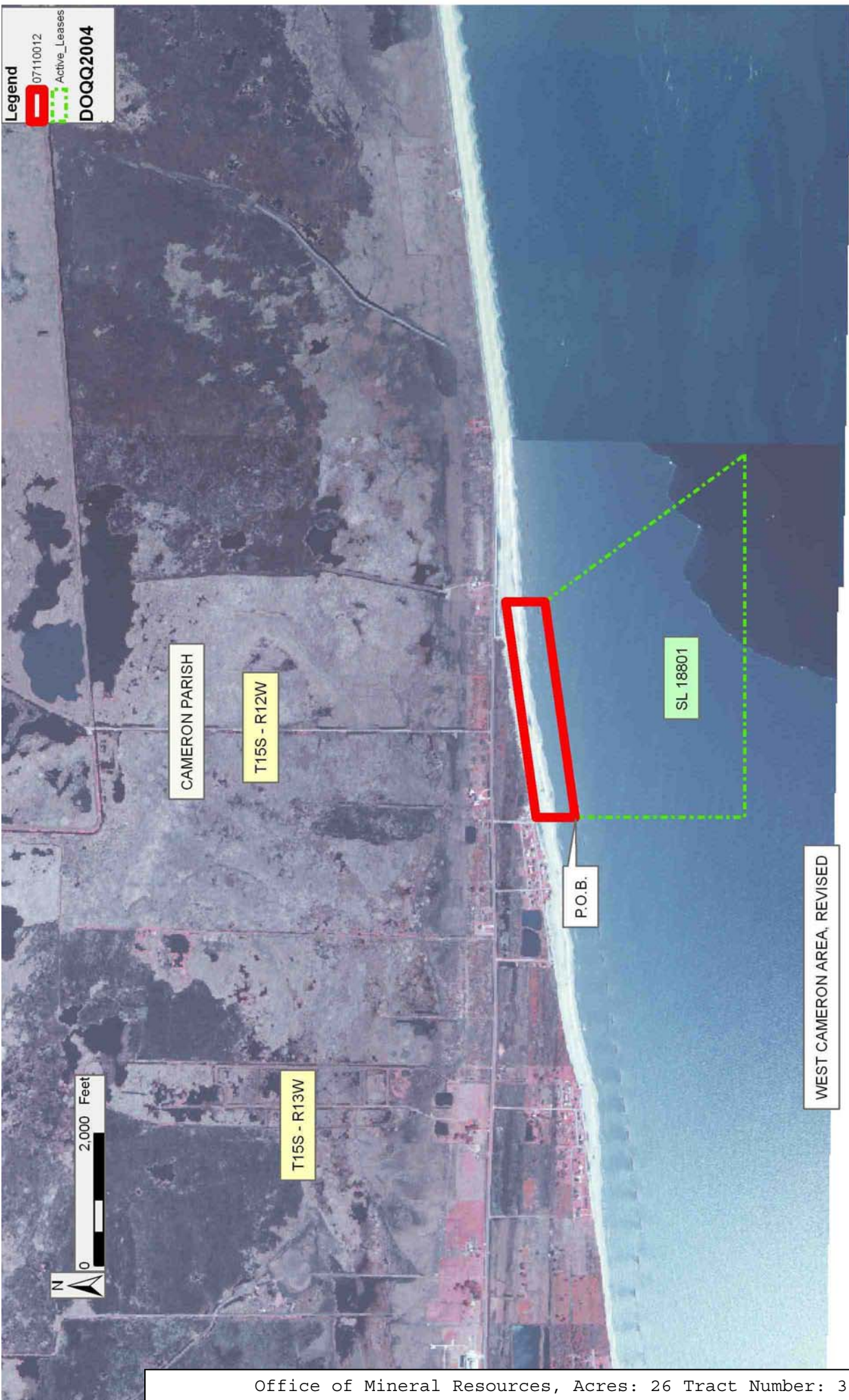
NOTE: The above description of the Tract nominated for lease has been provided and corrected, where required, exclusively by the nomination party. Any mineral lease selected from this Tract and awarded by the Louisiana State Mineral Board shall be without warranty of any kind, either express, implied, or statutory, including, but not limited to, the implied warranties of merchantability and fitness for a particular purpose. Should the mineral lease awarded by the Louisiana State Mineral Board be subsequently modified, cancelled or abrogated due to the existence of conflicting leases, operating agreements, private claims or other future obligations or conditions which may affect all or any portion of the leased Tract, it shall not relieve the Lessee of the obligation to pay any bonus due thereon to the Louisiana State Mineral Board, nor shall the Louisiana State Mineral Board be obligated to refund any consideration paid by the Lessor prior to such modification, cancellation, or abrogation, including, but not limited to, bonuses, rentals and royalties.

NOTE: The State of Louisiana does hereby reserve, and this lease shall be subject to, the imprescriptible right of surface use in the nature of a servitude in favor of the Department of Natural Resources, including its Offices and Commissions, for the sole purpose of implementing, constructing, servicing and maintaining approved coastal zone management and/or restoration projects. Utilization of any and all rights derived under this lease by the mineral lessee, its agents, successors or assigns, shall not interfere with nor hinder the reasonable surface use by the Department of Natural Resources, its Offices or Commissions, as herein above reserved.

Applicant: FRANZ P. SCHOEFFLER

Bidder	Cash Payment	Price/Acre	Rental	Oil	Gas	Other

Legend
07110012
Active_Leases
DOQQ2004



TRACT 39465 - Cameron Parish, Louisiana

All lands, including lands added by accretion and reliction and lands now or formerly constituting the beds and bottoms of all water bodies of every nature and description, owned by and not presently under mineral lease as of November 14, 2007 from the State of Louisiana, situated in Cameron Parish, Louisiana, and being more fully described as follows: Beginning at a point having Coordinates of X = 1,280,760.00 and Y = 403,398.00; thence North 84 degrees 20 minutes 39 seconds East 5,153.70 feet to a point having Coordinates of X = 1,285,888.61 and Y = 403,905.90; thence South 469.95 feet to a point on the Louisiana Coastline, as decreed by the Supreme Court of the United States, as determined by a Special Master appointed therein, in litigation styled *United States v. State of Louisiana et al No. 9 Original*, in 1975, having Coordinates of X = 1,285,888.61 and Y = 403,435.95; thence Southwesterly on a straight line, along said Louisiana Coastline, to a point having Coordinates of X = 1,280,760 and Y = 402,836; thence North 562.00 feet to the point of beginning, containing approximately **36 acres**, all as more particularly outlined on a plat on file in the Office of Mineral Resources, Department of Natural Resources. All bearings, distances and coordinates are based on Louisiana Coordinate System of 1927, (North or South Zone), where applicable.

NOTE: The above description of the Tract nominated for lease has been provided and corrected, where required, exclusively by the nomination party. Any mineral lease selected from this Tract and awarded by the Louisiana State Mineral Board shall be without warranty of any kind, either express, implied, or statutory, including, but not limited to, the implied warranties of merchantability and fitness for a particular purpose. Should the mineral lease awarded by the Louisiana State Mineral Board be subsequently modified, cancelled or abrogated due to the existence of conflicting leases, operating agreements, private claims or other future obligations or conditions which may affect all or any portion of the leased Tract, it shall not relieve the Lessee of the obligation to pay any bonus due thereon to the Louisiana State Mineral Board, nor shall the Louisiana State Mineral Board be obligated to refund any consideration paid by the Lessor prior to such modification, cancellation, or abrogation, including, but not limited to, bonuses, rentals and royalties.

NOTE: The State of Louisiana does hereby reserve, and this lease shall be subject to, the imprescriptible right of surface use in the nature of a servitude in favor of the Department of Natural Resources, including its Offices and Commissions, for the sole purpose of implementing, constructing, servicing and maintaining approved coastal zone management and/or restoration projects. Utilization of any and all rights derived under this lease by the mineral lessee, its agents, successors or assigns, shall not interfere with nor hinder the reasonable surface use by the Department of Natural Resources, its Offices or Commissions, as herein above reserved.

Applicant: FRANZ P. SCHOEFFLER

Bidder	Cash Payment	Price/Acre	Rental	Oil	Gas	Other

Legend
07110016
DOQQ2004



CAMERON PARISH

T15S - R13W

P.O.B.

GULF OF MEXICO

WEST CAMERON AREA, REVISED

2,000 Feet

TRACT 39466 - Cameron Parish, Louisiana

All lands, including lands added by accretion and reliction and lands now or formerly constituting the beds and bottoms of all water bodies of every nature and description, owned by and not presently under mineral lease as of November 14, 2007 from the State of Louisiana, situated in Cameron Parish, Louisiana, and being more fully described as follows: Beginning at a point on the Louisiana Coastline, as decreed by the Supreme Court of the United States, as determined by a Special Master appointed therein, in litigation styled *United States v. State of Louisiana et al No. 9 Original*, in 1975, having Coordinates of X = 1,288,145.38 and Y = 403,746.45; thence along said Louisiana Coastline the following courses: Southwesterly on a straight line to a point having Coordinates of X = 1,286,154 and Y = 403,467 and Southwesterly on a straight line to a point having Coordinates of X = 1,285,888.61 and Y = 403,435.95; thence North 586.05 feet to a point having Coordinates of X = 1,285,888.61 and Y = 404,022.00; thence North 82 degrees 00 minutes 51 seconds East 2,278.87 feet to a point having Coordinates of X = 1,288,145.38 and Y = 404,338.60; thence South 592.15 feet to the point of beginning, containing approximately **16 acres**, all as more particularly outlined on a plat on file in the Office of Mineral Resources, Department of Natural Resources. All bearings, distances and coordinates are based on Louisiana Coordinate System of 1927, (North or South Zone), where applicable.

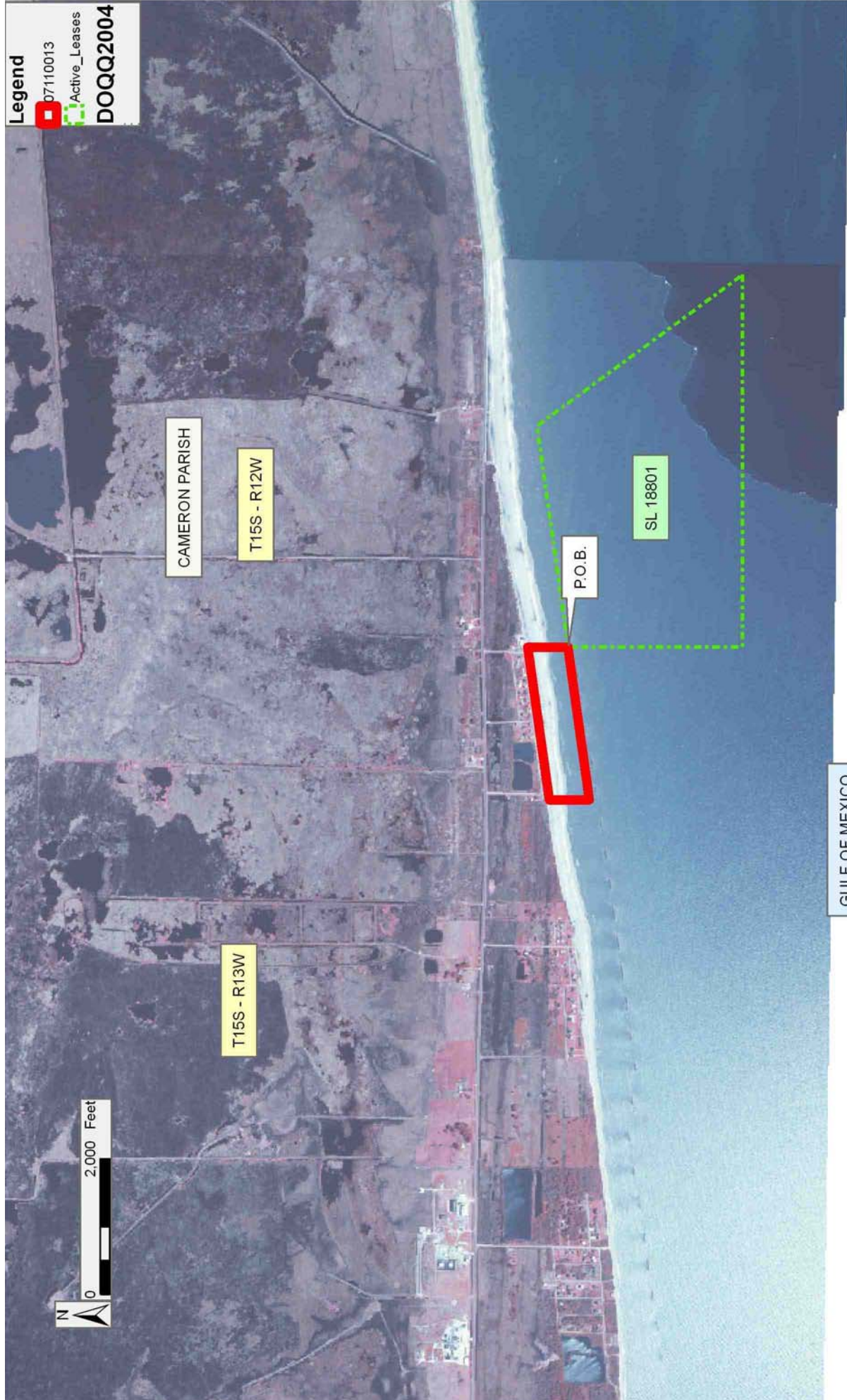
NOTE: The above description of the Tract nominated for lease has been provided and corrected, where required, exclusively by the nomination party. Any mineral lease selected from this Tract and awarded by the Louisiana State Mineral Board shall be without warranty of any kind, either express, implied, or statutory, including, but not limited to, the implied warranties of merchantability and fitness for a particular purpose. Should the mineral lease awarded by the Louisiana State Mineral Board be subsequently modified, cancelled or abrogated due to the existence of conflicting leases, operating agreements, private claims or other future obligations or conditions which may affect all or any portion of the leased Tract, it shall not relieve the Lessee of the obligation to pay any bonus due thereon to the Louisiana State Mineral Board, nor shall the Louisiana State Mineral Board be obligated to refund any consideration paid by the Lessor prior to such modification, cancellation, or abrogation, including, but not limited to, bonuses, rentals and royalties.

NOTE: The State of Louisiana does hereby reserve, and this lease shall be subject to, the imprescriptible right of surface use in the nature of a servitude in favor of the Department of Natural Resources, including its Offices and Commissions, for the sole purpose of implementing, constructing, servicing and maintaining approved coastal zone management and/or restoration projects. Utilization of any and all rights derived under this lease by the mineral lessee, its agents, successors or assigns, shall not interfere with nor hinder the reasonable surface use by the Department of Natural Resources, its Offices or Commissions, as herein above reserved.

Applicant: FRANZ P. SCHOEFFLER

Bidder	Cash Payment	Price/Acre	Rental	Oil	Gas	Other

Legend
07110013
Active_Leases
DOQQ2004



CAMERON PARISH

T15S - R12W

T15S - R13W

P.O.B.

SL 18801

GULF OF MEXICO

WEST CAMERON AREA, REVISED

TRACT 39467 - Iberia Parish, Louisiana

All of the lands now or formerly constituting the beds and bottoms of all water bodies of every nature and description as to which title is vested in the State of Louisiana, together with all islands arising therein and other lands formed by accretion or by reliction, where allowed by law, excepting tax adjudicated lands, and not presently under mineral lease on November 14, 2007, situated in Iberia Parish, Louisiana, and more particularly described as follows: Beginning at the Southeast corner of State Lease No. 19441 having Coordinates of 1,848,895.05 and Y = 344,957.06; thence along the boundary of said State Lease No. 19441 the following courses: North 13 degrees 58 minutes 15 seconds East 2,576.15 feet and North 13 degrees 58 minutes 04 seconds East approximately 2,573 feet to its Northernmost corner, also being a point on the boundary of the West Cote Blanche Bay portion of State Lease No. 340, as amended; thence Southeasterly approximately 9,600 feet to Easternmost corner of State Lease No. 19405 having Coordinates of X = 1,851,530.00 and Y = 340,455.00; thence along the boundary of said State Lease No. 19405 the following courses: North 22 degrees 30 minutes 30 seconds West 3,160.78 feet; North 46 degrees 13 minutes 55 seconds West 1,973.28 feet; North 89 degrees 19 minutes 36 seconds West 4,255.29 feet; South 58 degrees 58 minutes 59 seconds West 737.44 feet; South 15 degrees 43 minutes 41 seconds West 1,412.90 feet and South 06 degrees 34 minutes 45 seconds East 1,019.72 feet to a point said to be on the boundary of Marsh Island Wildlife Refuge having Coordinates of X = 1,843,741.84 and Y = 342,036.99; thence along the meanders of said Marsh Island Refuge the following: Northwesterly to a point having Coordinates of X = 1,842,222.22 and Y = 344,055.04 and Northwesterly to a point on the Southern boundary said State Lease No. 340; thence Easterly approximately 1,697 feet along the Southern boundary of said State Lease No. 340 to its Southernmost Southeast corner, also being the Southwest corner of said State Lease No. 19441; thence Easterly approximately 7,412 feet along the South boundary of said State Lease No. 19441 to the point of beginning, **LESS AND EXCEPT** those portions, if any, of State Lease No. 340, as amended, State Lease No. 19405 and State Lease No. 19441 that may lie within the above described tract, **ALSO LESS AND EXCEPT** that portion, if any, of the Marsh Island Wildlife Refuge that may lie within the above described tract, containing approximately **344 acres**, all as more particularly outlined on a plat on file in the Office of Mineral Resources, Department of Natural Resources. All bearings, distances and coordinates are based on Louisiana Coordinate System of 1927, (North or South Zone), where applicable.

NOTE: The above description of the Tract nominated for lease has been provided and corrected, where required, exclusively by the nomination party. Any mineral lease selected from this Tract and awarded by the Louisiana State Mineral Board shall be without warranty of any kind, either express, implied, or statutory, including, but not limited to, the implied warranties of merchantability and fitness for a particular purpose. Should the mineral lease awarded by the Louisiana State Mineral Board be subsequently modified, cancelled or abrogated due to the

existence of conflicting leases, operating agreements, private claims or other future obligations or conditions which may affect all or any portion of the leased Tract, it shall not relieve the Lessee of the obligation to pay any bonus due thereon to the Louisiana State Mineral Board, nor shall the Louisiana State Mineral Board be obligated to refund any consideration paid by the Lessor prior to such modification, cancellation, or abrogation, including, but not limited to, bonuses, rentals and royalties.

NOTE: The acreage contained herein, being a portion of State Lease 335, 340 or 341, was subject to the litigation between Texas, Inc. and the State of Louisiana which resulted in the Global Settlement Agreement compromise whereby this acreage was reassigned through various mesne conveyances to the successors of William T. Burton, the original lessee of said leases from the State, (hereinafter otherwise referred to as the "ORRO's) and approved by the State Mineral Board, becoming effective April 25, 1994. Under separate agreement by and between the State and the ORRO's, certain obligations were to be met within a specified time frame or the ORRO's became obligated to release the reassigned acreage back to the State. The obligations were not met within the specified time frame and the State began securing the releases for the acreage contained herein. Due to the extremely large number of ORRO's, their nationwide and worldwide dispersal, the unreliability of available contact information and/or a present inability to obtain full, requisite cooperation, the State has, as yet, not secured releases from certain ORRO's representing approximately a .0258336 interest in this acreage. Accordingly, although the State is diligently pursuing the requisite releases affecting this acreage (the furnishing of which the ORRO's representing the stated decimal interest are obligated), nevertheless, a party obtaining a mineral lease from the State of Louisiana on the acreage contained herein shall do so with full knowledge that a complete release of all specific ORRO interest in this acreage has not as yet been secured and shall assume a business risk commensurate with the unsecured interest release.

NOTE: The State of Louisiana does hereby reserve, and this lease shall be subject to, the imprescriptible right of surface use in the nature of a servitude in favor of the Department of Natural Resources, including its Offices and Commissions, for the sole purpose of implementing, constructing, servicing and maintaining approved coastal zone management and/or restoration projects. Utilization of any and all rights derived under this lease by the mineral lessee, its agents, successors or assigns, shall not interfere with nor hinder the reasonable surface use by the Department of Natural Resources, its Offices or Commissions, as herein above reserved.

NOTE: The Department of Wildlife and Fisheries has designated certain areas in the coastal waters of the State of Louisiana as Oyster Seed Bed Areas. The exact location of those Seed Bed Areas must be obtained from the Department of Wildlife and Fisheries and any work done under a mineral lease from the State of Louisiana may necessarily be conducted in

conformity with the rules and regulations promulgated by the said Department of Wildlife and Fisheries for Oyster Seed Bed Areas.

NOTE: All or a portion of this Tract lies within one nautical mile of the boundary of the Russell Sage or Marsh Island Wildlife Refuge and Game Preserve. Any activities connected with this lease conducted within this Tract which may pose potential environmental impacts to the said Wildlife Refuge and Game Preserve should be coordinated with the Louisiana Department of Wildlife and Fisheries.

Applicant: PATRICK L. DONOHUE PETROLEUM PROPERTIES, INC.

Bidder	Cash Payment	Price/Acre	Rental	Oil	Gas	Other

Legend
07110023
Active_Leases



IBERIA PARISH

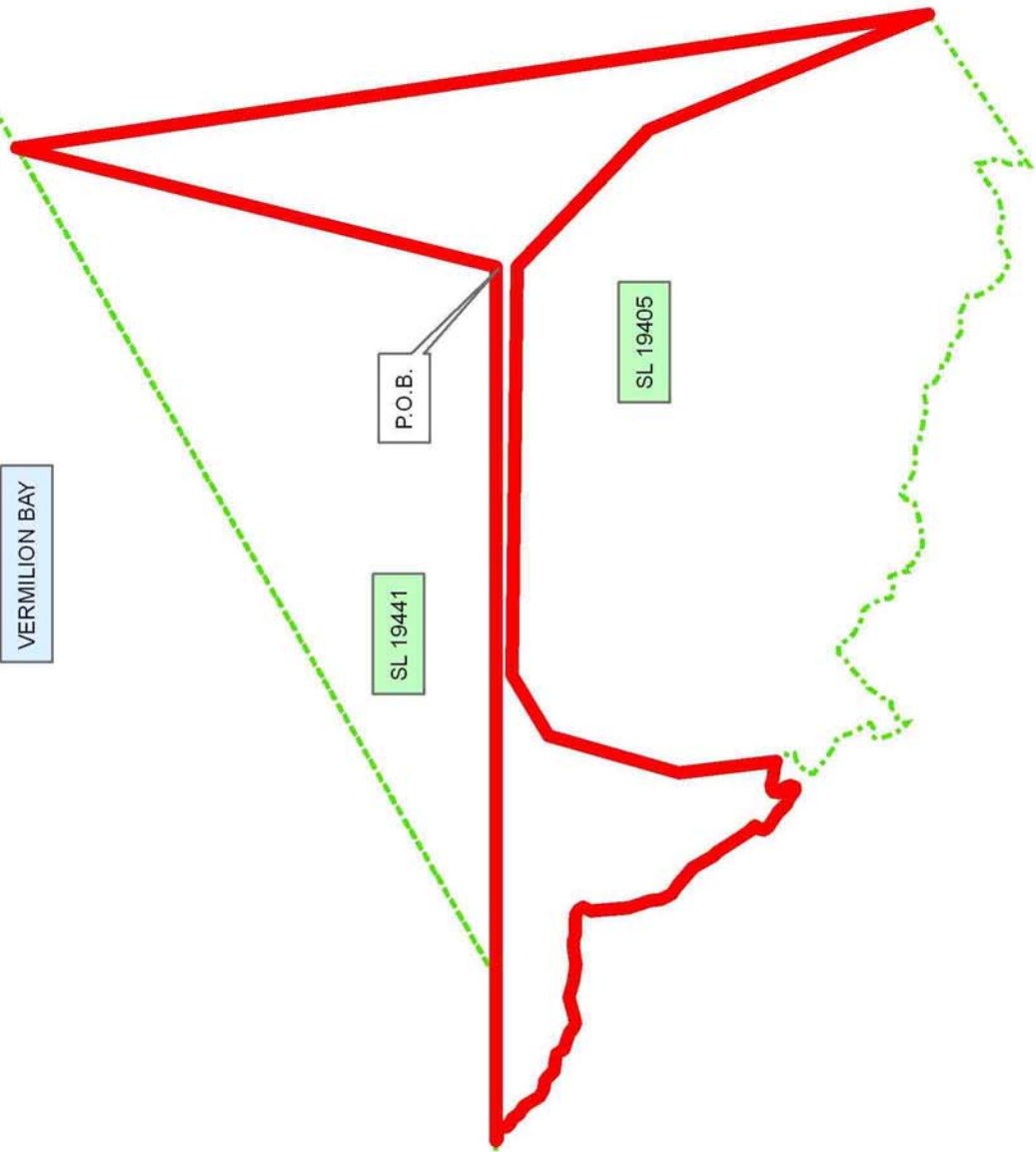
SL 340

VERMILION BAY

SL 19441

P.O.B.

SL 19405



TRACT 39468 - St. Mary Parish, Louisiana

All of the lands now or formerly constituting the beds and bottoms of all water bodies of every nature and description as to which title is vested in the State of Louisiana, together with all islands arising therein and other lands formed by accretion or by reliction, where allowed by law, excepting tax adjudicated lands, and not presently under mineral lease on November 14, 2007, situated in St. Mary Parish, Louisiana, and more particularly described as follows: Beginning at a point having Coordinates of X = 2,003,568.08 and Y = 327,113.00; thence North 00 degrees 11 minutes 10 seconds West 18,480.00 feet to a point having Coordinates of X = 2,003,508.05 and Y = 345,592.90; thence North 89 degrees 45 minutes 37 seconds East 10,752.09 feet to a point having Coordinates of X = 2,014,260.05 and Y = 345,637.89; thence Southerly approximately 4,936 feet to the Northwest corner of State Lease No. 1337, as amended; thence Southerly approximately 384 feet along the Western boundary of said State Lease No. 1337 to the Northeast corner of State Lease No. 18841 having a Coordinate of Y = 340,332.00; thence along the boundary of said State Lease No. 18841 the following courses: West approximately 5,351 feet to a point having Coordinates of X = 2,009,025.00 and Y = 340,332.00; South 5,295.00 feet to a point having Coordinates of X = 2,009,025.00 and Y = 335,037.00 and East approximately 5,408 feet to its Southeast corner, also being a point on the Western boundary of said State Lease No. 1337 having a Coordinate of Y = 335,037.00; thence Southerly approximately 7,801 feet along the Western boundary of said State Lease No. 1337 to a point of intersection with a line having a bearing of North 89 degrees 21 minutes 07 seconds East and commencing at a point having Coordinates of X = 2,003,568.08 and Y = 327,113.00; thence South 89 degrees 21 minutes 07 seconds West approximately 10,950 feet to the point of beginning, **LESS AND EXCEPT** that portion, if any, of State Lease No. 1337, as amended, and State Lease No. 18841 that may lie within the above describe tract, containing approximately **535 acres**, all as more particularly outlined on a plat on file in the Office of Mineral Resources, Department of Natural Resources. All bearings, distances and coordinates are based on Louisiana Coordinate System of 1927, (North or South Zone), where applicable.

NOTE: The above description of the Tract nominated for lease has been provided and corrected, where required, exclusively by the nomination party. Any mineral lease selected from this Tract and awarded by the Louisiana State Mineral Board shall be without warranty of any kind, either express, implied, or statutory, including, but not limited to, the implied warranties of merchantability and fitness for a particular purpose. Should the mineral lease awarded by the Louisiana State Mineral Board be subsequently modified, cancelled or abrogated due to the existence of conflicting leases, operating agreements, private claims or other future obligations or conditions which may affect all or any portion of the leased Tract, it shall not relieve the Lessee of the obligation to pay any bonus due thereon to the Louisiana State Mineral Board, nor shall the Louisiana State Mineral Board be obligated to refund any consideration

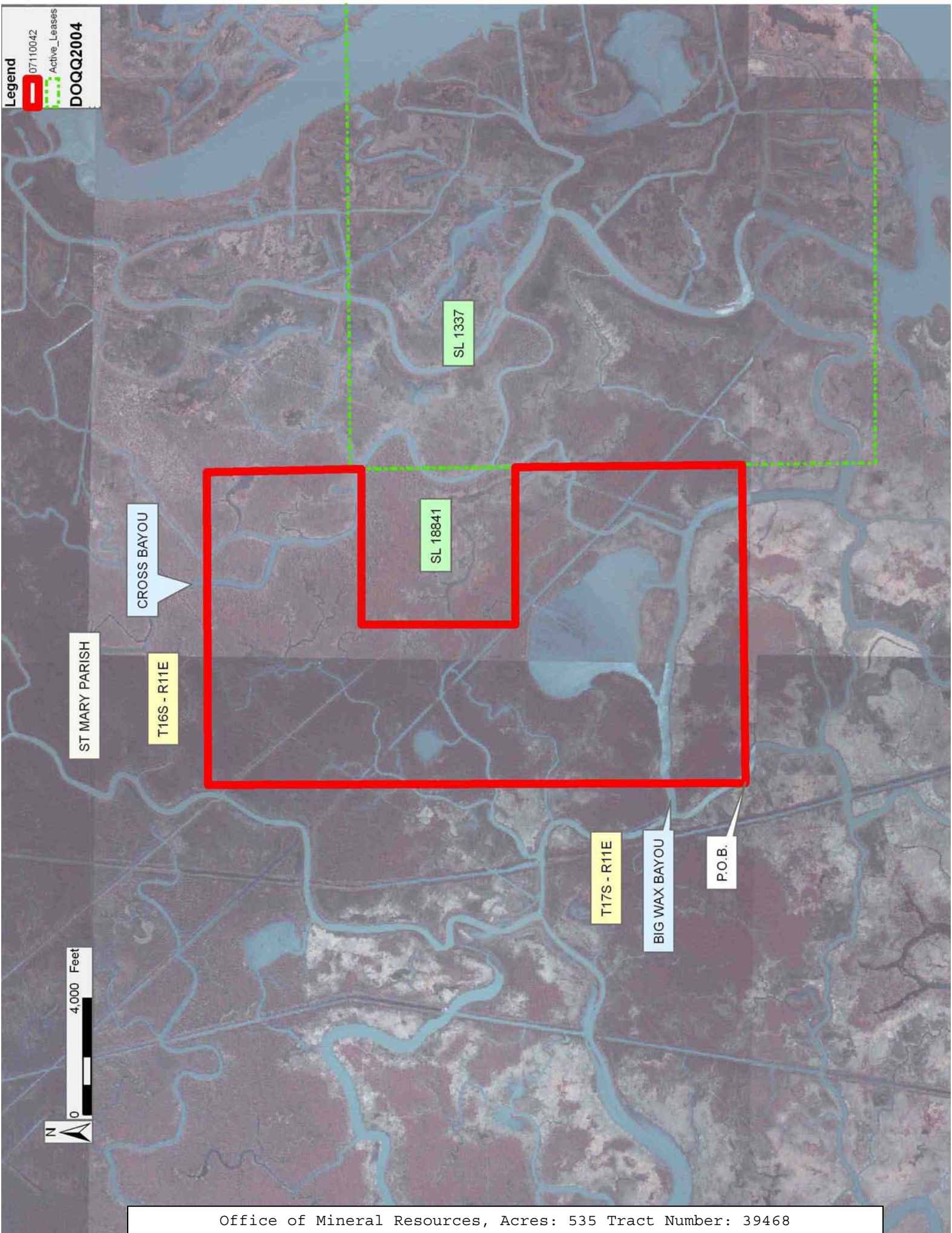
paid by the Lessor prior to such modification, cancellation, or abrogation, including, but not limited to, bonuses, rentals and royalties.

NOTE: The State of Louisiana does hereby reserve, and this lease shall be subject to, the imprescriptible right of surface use in the nature of a servitude in favor of the Department of Natural Resources, including its Offices and Commissions, for the sole purpose of implementing, constructing, servicing and maintaining approved coastal zone management and/or restoration projects. Utilization of any and all rights derived under this lease by the mineral lessee, its agents, successors or assigns, shall not interfere with nor hinder the reasonable surface use by the Department of Natural Resources, its Offices or Commissions, as herein above reserved.

Applicant: CYPRESS ENERGY CORPORATION

Bidder	Cash Payment	Price/Acre	Rental	Oil	Gas	Other

Legend
07110042
Active_Leases
DOQQ2004



TRACT 39469 - St. Mary Parish, Louisiana

All of the lands now or formerly constituting the beds and bottoms of all water bodies of every nature and description as to which title is vested in the State of Louisiana, together with all islands arising therein and other lands formed by accretion or by reliction, where allowed by law, excepting tax adjudicated lands, and not presently under mineral lease on November 14, 2007, situated in St. Mary Parish, Louisiana, and more particularly described as follows: Beginning at a point having Coordinates of X = 1,987,104.72 and Y = 342,821.90; thence North 89 degrees 33 minutes 49 seconds East 16,412.40 feet to a point having Coordinates of X = 2,003,516.65 and Y = 342,946.90; thence South 00 degrees 11 minutes 10 seconds East 18,480.00 feet to a point having Coordinates of X = 2,003,576.67 and Y = 324,467.00; thence South 89 degrees 58 minutes 07 seconds West 10,972.68 feet to a point having Coordinates of X = 1,992,604.00 and Y = 324,461.00; thence Southerly approximately 358 feet to the Northeast corner of State Lease No. 3184; thence Westerly approximately 2,665 feet along the North boundary of said State Lease No. 3184 to the Southeast corner of State Lease No. 3185, as amended; thence along the boundary of said State Lease No. 3185 the following courses: Northerly approximately 8,285 feet and Westerly approximately 2,721 feet to the point of intersection with a line having a bearing of South 00 degrees 12 minutes 22 seconds East and commencing at a point having Coordinates of X = 1,987,104.72 and Y = 342,821.90; thence North 00 degrees 12 minutes 22 seconds West approximately 10,444 feet along said line to the point of beginning, **LESS AND EXCEPT** that portion, if any, of State Lease No. 3184 and State Lease No. 3185, as amended, that may lie within the above describe tract, containing approximately **471 acres**, all as more particularly outlined on a plat on file in the Office of Mineral Resources, Department of Natural Resources. All bearings, distances and coordinates are based on Louisiana Coordinate System of 1927, (North or South Zone), where applicable.

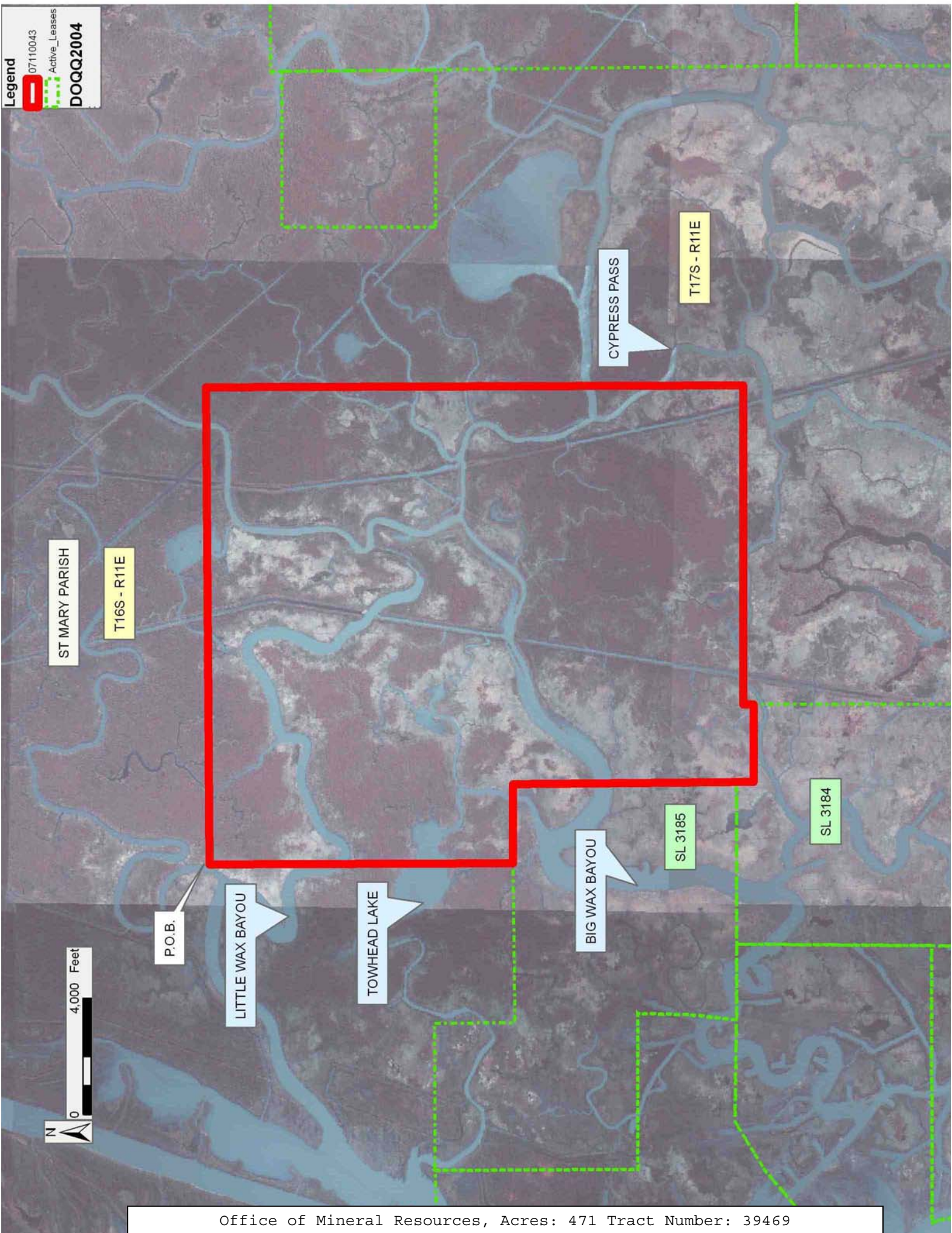
NOTE: The above description of the Tract nominated for lease has been provided and corrected, where required, exclusively by the nomination party. Any mineral lease selected from this Tract and awarded by the Louisiana State Mineral Board shall be without warranty of any kind, either express, implied, or statutory, including, but not limited to, the implied warranties of merchantability and fitness for a particular purpose. Should the mineral lease awarded by the Louisiana State Mineral Board be subsequently modified, cancelled or abrogated due to the existence of conflicting leases, operating agreements, private claims or other future obligations or conditions which may affect all or any portion of the leased Tract, it shall not relieve the Lessee of the obligation to pay any bonus due thereon to the Louisiana State Mineral Board, nor shall the Louisiana State Mineral Board be obligated to refund any consideration paid by the Lessor prior to such modification, cancellation, or abrogation, including, but not limited to, bonuses, rentals and royalties.

NOTE: The State of Louisiana does hereby reserve, and this lease shall be subject to, the imprescriptible right of surface use in the nature of a servitude in favor of the Department of Natural Resources, including its Offices and Commissions, for the sole purpose of implementing, constructing, servicing and maintaining approved coastal zone management and/or restoration projects. Utilization of any and all rights derived under this lease by the mineral lessee, its agents, successors or assigns, shall not interfere with nor hinder the reasonable surface use by the Department of Natural Resources, its Offices or Commissions, as herein above reserved.

Applicant: CYPRESS ENERGY CORPORATION

Bidder	Cash Payment	Price/Acre	Rental	Oil	Gas	Other

Legend
07110043
Active_Leases
DOQQ2004



TRACT 39470 - Plaquemines Parish, Louisiana

All of the lands now or formerly constituting the beds and bottoms of all water bodies of every nature and description as to which title is vested in the State of Louisiana, together with all islands arising therein and other lands formed by accretion or by reliction, where allowed by law, excepting tax adjudicated lands, and not presently under mineral lease on November 14, 2007, situated in Plaquemines Parish, Louisiana, and more particularly described as follows: Beginning at a point having Coordinates of X = 2,483,551.00 and Y = 330,851.00; thence South 34 degrees 28 minutes 56 seconds East 12,860.57 feet to a point having Coordinates of X = 2,490,832.00 and Y = 320,250.00; thence South 44 degrees 40 minutes 44 seconds West 3,154.45 feet to a point having Coordinates of X = 2,488,614.00 and Y = 318,007.00; thence North 34 degrees 24 minutes 46 seconds West 11,938.38 feet to a point having Coordinates of X = 2,481,867.00 and Y = 327,856.00; thence North 29 degrees 20 minutes 52 seconds East 3,435.97 feet to the point of beginning, containing approximately **49 acres**, all as more particularly outlined on a plat on file in the Office of Mineral Resources, Department of Natural Resources. All bearings, distances and coordinates are based on Louisiana Coordinate System of 1927, (North or South Zone), where applicable.

NOTE: The above description of the Tract nominated for lease has been provided and corrected, where required, exclusively by the nomination party. Any mineral lease selected from this Tract and awarded by the Louisiana State Mineral Board shall be without warranty of any kind, either express, implied, or statutory, including, but not limited to, the implied warranties of merchantability and fitness for a particular purpose. Should the mineral lease awarded by the Louisiana State Mineral Board be subsequently modified, cancelled or abrogated due to the existence of conflicting leases, operating agreements, private claims or other future obligations or conditions which may affect all or any portion of the leased Tract, it shall not relieve the Lessee of the obligation to pay any bonus due thereon to the Louisiana State Mineral Board, nor shall the Louisiana State Mineral Board be obligated to refund any consideration paid by the Lessor prior to such modification, cancellation, or abrogation, including, but not limited to, bonuses, rentals and royalties.

NOTE: The State of Louisiana does hereby reserve, and this lease shall be subject to, the imprescriptible right of surface use in the nature of a servitude in favor of the Department of Natural Resources, including its Offices and Commissions, for the sole purpose of implementing, constructing, servicing and maintaining approved coastal zone management and/or restoration projects. Utilization of any and all rights derived under this lease by the mineral lessee, its agents, successors or assigns, shall not interfere with nor hinder the reasonable surface use by the Department of Natural Resources, its Offices or Commissions, as herein above reserved.

NOTE: The Department of Wildlife and Fisheries has designated certain areas in the coastal waters of the State of Louisiana as Oyster Seed Bed Areas. The exact location of those Seed Bed Areas must be obtained from the Department of Wildlife and Fisheries and any work done under a mineral lease from the State of Louisiana may necessarily be conducted in conformity with the rules and regulations promulgated by the said Department of Wildlife and Fisheries for Oyster Seed Bed Areas.

Applicant: JONATHAN SMITH

Bidder	Cash Payment	Price/Acre	Rental	Oil	Gas	Other

PLAQUEMINES PARISH

T17S - R14E

P.O.B.

GRAND BAYOU

T18S - R26E

T17S - R26E



TRACT 39471 - Plaquemines Parish, Louisiana

All of the lands now or formerly constituting the beds and bottoms of all water bodies of every nature and description as to which title is vested in the State of Louisiana, together with all islands arising therein and other lands formed by accretion or by reliction, where allowed by law, excepting tax adjudicated lands, and not presently under mineral lease or if under a mineral lease, that lease does not contain the rights for solid minerals on November 14, 2007, situated in Plaquemines Parish, Louisiana, and more particularly described as follows: Beginning at a point having Coordinates of X = 2,450,682.00 and Y = 325,331.00; thence East 10,435.00 feet to a point having Coordinates of X = 2,461,117.00 and Y = 325,331.00; thence South 10,435.00 feet to a point having Coordinates of X = 2,461,117.00 and Y = 314,896.00; thence West 10,435.00 feet to a point having Coordinates of X = 2,450,682.00 and Y = 314,896.00; thence North 10,435.00 feet to the point of beginning, containing approximately **1,035.67 acres**, all as more particularly outlined on a plat on file in the Office of Mineral Resources, Department of Natural Resources. All bearings, distances and coordinates are based on Louisiana Coordinate System of 1927, (North or South Zone), where applicable.

NOTE: The above description of the Tract nominated for lease has been provided and corrected, where required, exclusively by the nomination party. Any mineral lease selected from this Tract and awarded by the Louisiana State Mineral Board shall be without warranty of any kind, either express, implied, or statutory, including, but not limited to, the implied warranties of merchantability and fitness for a particular purpose. Should the mineral lease awarded by the Louisiana State Mineral Board be subsequently modified, cancelled or abrogated due to the existence of conflicting leases, operating agreements, private claims or other future obligations or conditions which may affect all or any portion of the leased Tract, it shall not relieve the Lessee of the obligation to pay any bonus due thereon to the Louisiana State Mineral Board, nor shall the Louisiana State Mineral Board be obligated to refund any consideration paid by the Lessor prior to such modification, cancellation, or abrogation, including, but not limited to, bonuses, rentals and royalties.

NOTE: The State of Louisiana does hereby reserve, and this lease shall be subject to, the imprescriptible right of surface use in the nature of a servitude in favor of the Department of Natural Resources, including its Offices and Commissions, for the sole purpose of implementing, constructing, servicing and maintaining approved coastal zone management and/or restoration projects. Utilization of any and all rights derived under this lease by the mineral lessee, its agents, successors or assigns, shall not interfere with nor hinder the reasonable surface use by the Department of Natural Resources, its Offices or Commissions, as herein above reserved.

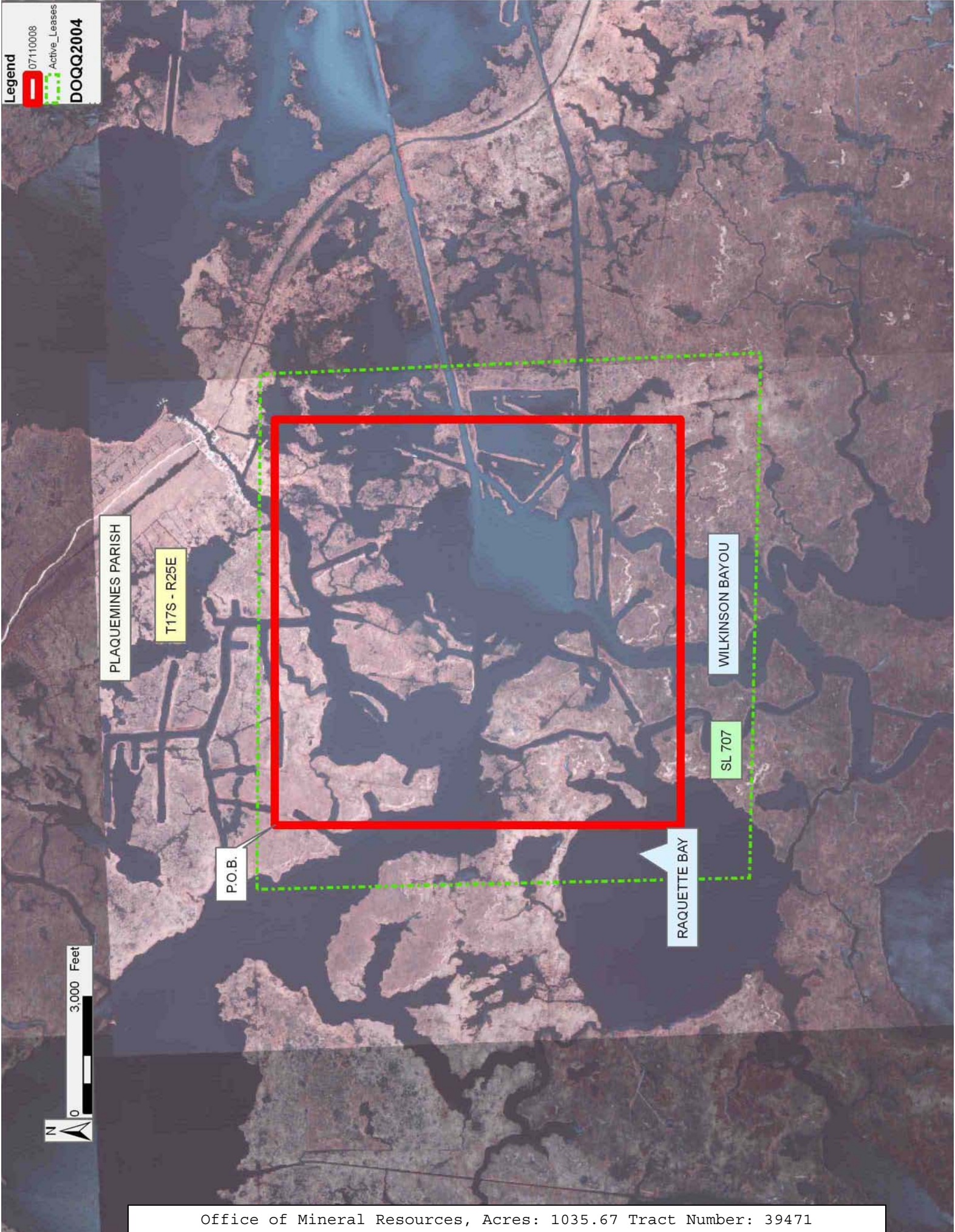
NOTE: The Department of Wildlife and Fisheries has designated certain areas in the coastal waters of the State of Louisiana as Oyster Seed Bed

Areas. The exact location of those Seed Bed Areas must be obtained from the Department of Wildlife and Fisheries and any work done under a mineral lease from the State of Louisiana may necessarily be conducted in conformity with the rules and regulations promulgated by the said Department of Wildlife and Fisheries for Oyster Seed Bed Areas.

Applicant: WCJ ENTERPRISES, INC.

Bidder	Cash Payment	Price/Acre	Rental	Oil	Gas	Other

Legend
07110008
Active_Leases
DOQQ2004



TRACT 39472 - St. Mary Parish, Louisiana

All of the lands now or formerly constituting the beds and bottoms of all water bodies of every nature and description as to which title is vested in the State of Louisiana, together with all islands arising therein and other lands formed by accretion or by reliction, where allowed by law, excepting tax adjudicated lands, and not presently under mineral lease on November 14, 2007, situated in St. Mary Parish, Louisiana, and more particularly described as follows: Beginning at a point having Coordinates of X = 2,003,628.00 and Y = 308,717.00; thence North 00 degrees 11 minutes 12 seconds West 18,396.10 feet to a point having Coordinates of X = 2,003,568.08 and Y = 327,113.00; thence North 89 degrees 21 minutes 07 seconds East approximately 10,950 feet to a point on the Western boundary of State Lease No. 1337, as amended; thence Southerly approximately 4,610 feet along the Western boundary of said State Lease No. 1337 to its Southwest corner, also being the Northwest corner of State Lease No. 19444; thence along the boundary of said State Lease No. 19444 the following courses: Southerly approximately 5,491 feet to a point having Coordinates of X = 2,014,566.70 and Y = 317,136.54 and East 3,317.30 feet to a point having a Coordinates of X = 2,017,884.00 and Y = 317,136.54; thence South 8,310.54 feet to a point having Coordinates of X = 2,017,884.00 and Y = 308,826.00; thence South 89 degrees 33 minutes 43 seconds West 14,256.42 feet to the point of beginning, **LESS AND EXCEPT** that portion, if any, of State Lease No. 1337, as amended, and State Lease No. 19444 that may lie within the above described tract, containing approximately **386 acres**, all as more particularly outlined on a plat on file in the Office of Mineral Resources, Department of Natural Resources. All bearings, distances and coordinates are based on Louisiana Coordinate System of 1927, (North or South Zone), where applicable.

NOTE: The above description of the Tract nominated for lease has been provided and corrected, where required, exclusively by the nomination party. Any mineral lease selected from this Tract and awarded by the Louisiana State Mineral Board shall be without warranty of any kind, either express, implied, or statutory, including, but not limited to, the implied warranties of merchantability and fitness for a particular purpose. Should the mineral lease awarded by the Louisiana State Mineral Board be subsequently modified, cancelled or abrogated due to the existence of conflicting leases, operating agreements, private claims or other future obligations or conditions which may affect all or any portion of the leased Tract, it shall not relieve the Lessee of the obligation to pay any bonus due thereon to the Louisiana State Mineral Board, nor shall the Louisiana State Mineral Board be obligated to refund any consideration paid by the Lessor prior to such modification, cancellation, or abrogation, including, but not limited to, bonuses, rentals and royalties.

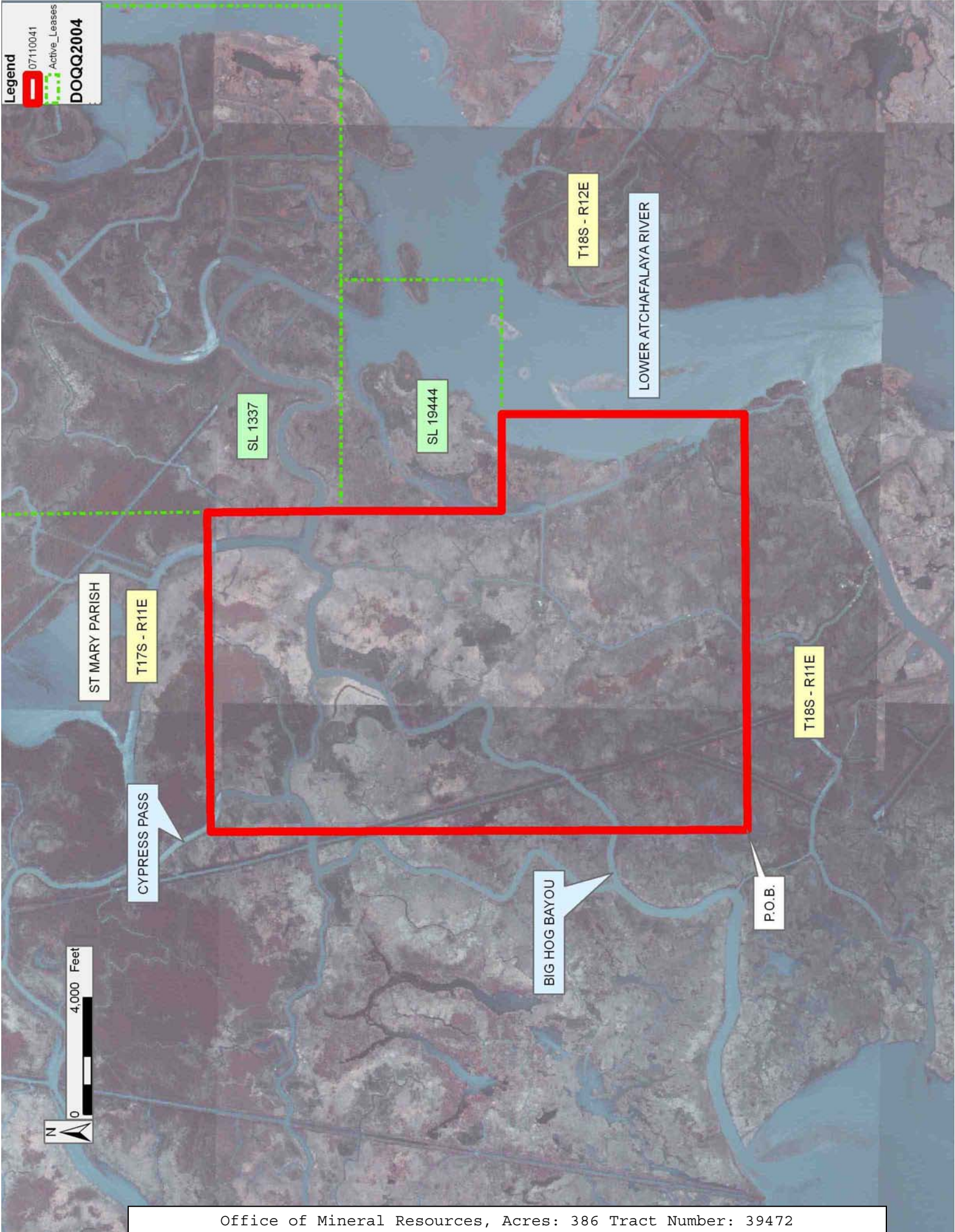
NOTE: The State of Louisiana does hereby reserve, and this lease shall be subject to, the imprescriptible right of surface use in the nature of a servitude in favor of the Department of Natural Resources, including its Offices and Commissions, for the sole purpose of implementing,

constructing, servicing and maintaining approved coastal zone management and/or restoration projects. Utilization of any and all rights derived under this lease by the mineral lessee, its agents, successors or assigns, shall not interfere with nor hinder the reasonable surface use by the Department of Natural Resources, its Offices or Commissions, as herein above reserved.

Applicant: CYPRESS ENERGY CORPORATION

Bidder	Cash Payment	Price/Acre	Rental	Oil	Gas	Other

Legend
07110041
Active_Leases
DOQQ2004



TRACT 39473 - Terrebonne Parish, Louisiana

All of the lands now or formerly constituting the beds and bottoms of all water bodies of every nature and description as to which title is vested in the State of Louisiana, together with all islands arising therein and other lands formed by accretion or by reliction, where allowed by law, excepting tax adjudicated lands, and not presently under mineral lease on November 14, 2007, situated in Terrebonne Parish, Louisiana, and more particularly described as follows: Beginning at a point having Coordinates of X = 2,030,204.96 and Y = 306,548.03; thence North 00 degrees 44 minutes 23 seconds West 10,593.58 feet to a point on the South boundary of State Lease No. 19037 having Coordinates of X = 2,030,068.18 and Y = 317,140.72; thence along the boundary of said State Lease No. 19037 the following courses: North 89 degrees 31 minutes 15 seconds East 5,326.27 feet and North 7,560.78 feet to its Northeast corner having Coordinates of X = 2,035,394.26 and Y = 324,746.04; thence North 407.96 feet to a point having Coordinates of X = 2,035,394.26 and Y = 325,154.00; thence North 89 degrees 07 minutes 46 seconds East 13,361.28 feet to a point having Coordinates of X = 2,048,754.00 and Y = 325,357.00; thence South 01 degrees 25 minutes 38 seconds East 11,884.88 feet to a point on the North boundary of State Lease No. 19372 having Coordinates of X = 2,049,050.00 and Y = 313,475.81; thence along the boundary of said State Lease No. 19372 the following courses: West 1,228.17 feet and South 6,520.00 feet to its Southwest corner having Coordinates of X = 2,047,821.83 and Y = 306,955.81; thence South 337.81 feet to a point having Coordinates of X = 2,047,821.83 and Y = 306,618.00; thence South 89 degrees 46 minutes 21 seconds West 17,617.01 feet to the point of beginning, containing approximately **286 acres**, all as more particularly outlined on a plat on file in the Office of Mineral Resources, Department of Natural Resources. All bearings, distances and coordinates are based on Louisiana Coordinate System of 1927, (North or South Zone), where applicable.

NOTE: The above description of the Tract nominated for lease has been provided and corrected, where required, exclusively by the nomination party. Any mineral lease selected from this Tract and awarded by the Louisiana State Mineral Board shall be without warranty of any kind, either express, implied, or statutory, including, but not limited to, the implied warranties of merchantability and fitness for a particular purpose. Should the mineral lease awarded by the Louisiana State Mineral Board be subsequently modified, cancelled or abrogated due to the existence of conflicting leases, operating agreements, private claims or other future obligations or conditions which may affect all or any portion of the leased Tract, it shall not relieve the Lessee of the obligation to pay any bonus due thereon to the Louisiana State Mineral Board, nor shall the Louisiana State Mineral Board be obligated to refund any consideration paid by the Lessor prior to such modification, cancellation, or abrogation, including, but not limited to, bonuses, rentals and royalties.

NOTE: The State of Louisiana does hereby reserve, and this lease shall be subject to, the imprescriptible right of surface use in the nature of a

servitude in favor of the Department of Natural Resources, including its Offices and Commissions, for the sole purpose of implementing, constructing, servicing and maintaining approved coastal zone management and/or restoration projects. Utilization of any and all rights derived under this lease by the mineral lessee, its agents, successors or assigns, shall not interfere with nor hinder the reasonable surface use by the Department of Natural Resources, its Offices or Commissions, as herein above reserved.

Applicant: CYPRESS ENERGY CORPORATION

Bidder	Cash Payment	Price/Acre	Rental	Oil	Gas	Other

Legend

07110044

SDE_BUS_83.ACTIVE_LEASES

DOQQ2004

TERREBONNE PARISH

SWORD BAYOU

PARTRIDGE BAYOU

LITTLE HORN BAYOU

SL 19372

DRY HORN BAYOU

DEER ISLAND BAYOU

SL 19037

BIG HORN BAYOU

P.O.B.

0 4,000 Feet