

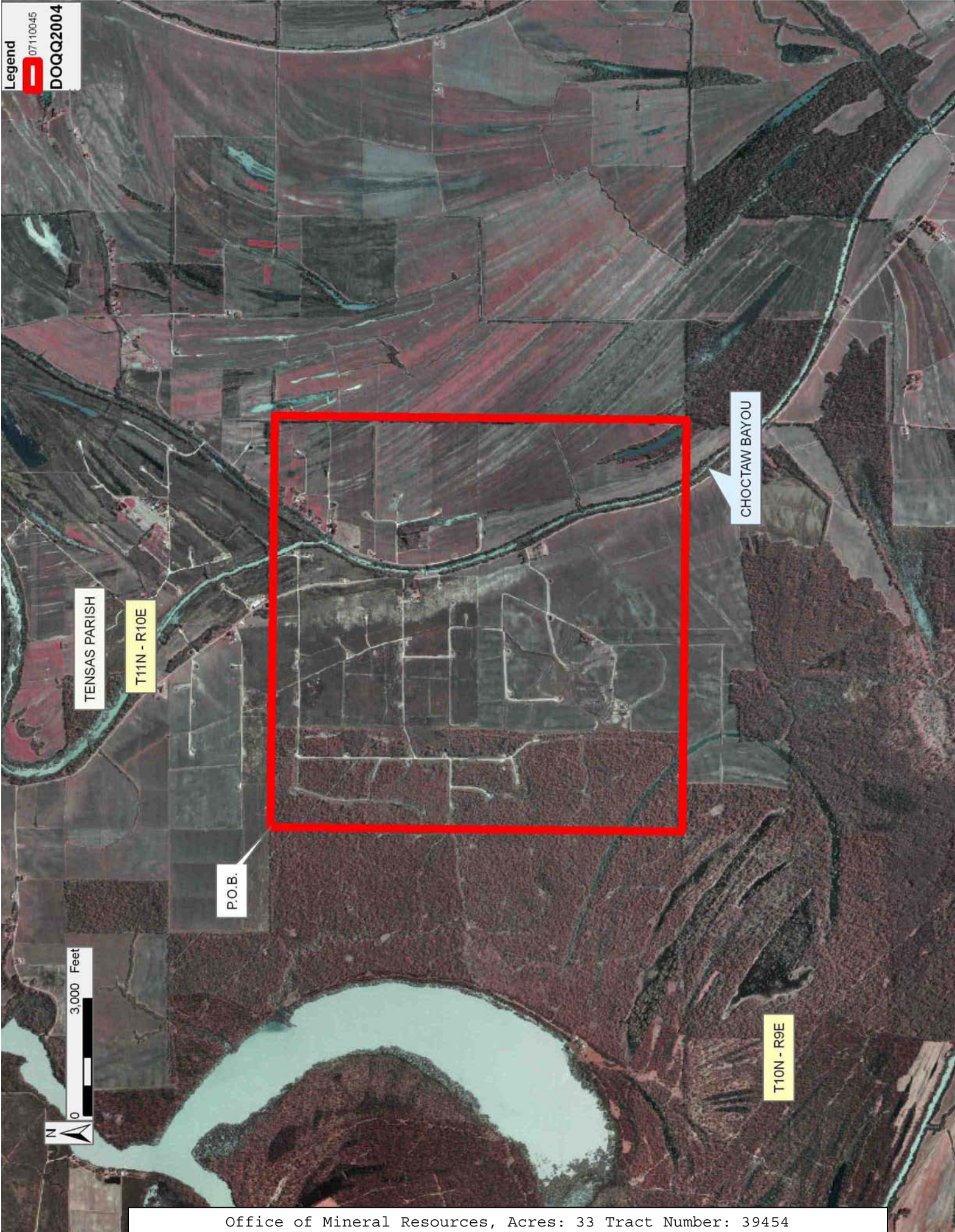
TRACT 39454 - Tensas Parish, Louisiana

All of the lands now or formerly constituting the beds and bottoms of all water bodies of every nature and description as to which title is vested in the State of Louisiana, together with all islands arising therein and other lands formed by accretion or by reliction, where allowed by law, excepting tax adjudicated lands, and not presently under mineral lease on November 14, 2007, situated in Tensas Parish, Louisiana, and more particularly described as follows: Beginning at a point having Coordinates of X = 2,312,149.16 and Y = 454,413.50; thence East 10,560.00 feet to a point having Coordinates of X = 2,322,709.16 and Y = 454,413.50; thence South 10,560.00 feet to a point having Coordinates of X = 2,322,709.16 and Y = 443,853.50; thence West 10,560.00 feet to a point having Coordinates of X = 2,312,149.16 and Y = 443,853.50; thence North 10,560.00 feet to the point of beginning, containing approximately **33 acres**, all as more particularly outlined on a plat on file in the Office of Mineral Resources, Department of Natural Resources. All bearings, distances and coordinates are based on Louisiana Coordinate System of 1927, (North or South Zone), where applicable.

NOTE: The above description of the Tract nominated for lease has been provided and corrected, where required, exclusively by the nomination party. Any mineral lease selected from this Tract and awarded by the Louisiana State Mineral Board shall be without warranty of any kind, either express, implied, or statutory, including, but not limited to, the implied warranties of merchantability and fitness for a particular purpose. Should the mineral lease awarded by the Louisiana State Mineral Board be subsequently modified, cancelled or abrogated due to the existence of conflicting leases, operating agreements, private claims or other future obligations or conditions which may affect all or any portion of the leased Tract, it shall not relieve the Lessee of the obligation to pay any bonus due thereon to the Louisiana State Mineral Board, nor shall the Louisiana State Mineral Board be obligated to refund any consideration paid by the Lessor prior to such modification, cancellation, or abrogation, including, but not limited to, bonuses, rentals and royalties.

Applicant: CYPRESS ENERGY CORPORATION

Bidder	Cash Payment	Price/Acre	Rental	Oil	Gas	Other



TRACT 39455 - Concordia Parish, Louisiana

All of the lands now or formerly constituting the beds and bottoms of all water bodies of every nature and description as to which title is vested in the State of Louisiana, together with all islands arising therein and other lands formed by accretion or by reliction, where allowed by law, excepting tax adjudicated lands, and not presently under mineral lease on November 14, 2007, situated in Concordia Parish, Louisiana, and more particularly described as follows: Beginning at a point having Coordinates of X = 2,304,240.00 and Y = 286,000.00; thence East 8,000.00 feet to a point having a Coordinates of X = 2,312,240.00 and Y = 286,000.00; thence go South for 8,895.83 feet to a point having Coordinates X = 2,312,240.00 and Y = 277,104.17; thence South 27 degrees 29 minutes 05 seconds West 1,724.41 feet to the Northeast corner of State Lease No. 16126, as amended, having Coordinates of X = 2,311,444.17 and Y = 275,574.39; thence along the south boundary of said State Lease No. 16126 South 27 degrees 29 minutes 05 seconds West 803.95 feet to its Southwest corner having Coordinates of X = 2,311,073.14 and Y = 274,861.18; thence continue South 27 degrees 29 minutes 05 seconds West 519.86 feet to a point having Coordinates of X = 2,310,833.22 and Y = 274,400.00; thence West 6,593.22 feet to a point having Coordinates of X = 2,304,240.00 and Y = 274,400.00; thence North 11,600.00 feet to the point of beginning, containing approximately **385 acres**, all as more particularly outlined on a plat on file in the Office of Mineral Resources, Department of Natural Resources. All bearings, distances and coordinates are based on Louisiana Coordinate System of 1927, (North or South Zone), where applicable.

NOTE: The above description of the Tract nominated for lease has been provided and corrected, where required, exclusively by the nomination party. Any mineral lease selected from this Tract and awarded by the Louisiana State Mineral Board shall be without warranty of any kind, either express, implied, or statutory, including, but not limited to, the implied warranties of merchantability and fitness for a particular purpose. Should the mineral lease awarded by the Louisiana State Mineral Board be subsequently modified, cancelled or abrogated due to the existence of conflicting leases, operating agreements, private claims or other future obligations or conditions which may affect all or any portion of the leased Tract, it shall not relieve the Lessee of the obligation to pay any bonus due thereon to the Louisiana State Mineral Board, nor shall the Louisiana State Mineral Board be obligated to refund any consideration paid by the Lessor prior to such modification, cancellation, or abrogation, including, but not limited to, bonuses, rentals and royalties.

Applicant: LESLIE M. COOPER

Bidder	Cash Payment	Price/Acre	Rental	Oil	Gas	Other

Legend

-  07110027
-  Active_Leases
- DOQQ2004**



TRACT 39456 - Concordia Parish, Louisiana

All of the lands now or formerly constituting the beds and bottoms of all water bodies of every nature and description as to which title is vested in the State of Louisiana, together with all islands arising therein and other lands formed by accretion or by reliction, where allowed by law, excepting tax adjudicated lands, and not presently under mineral lease on November 14, 2007, situated in Concordia Parish, Louisiana, and more particularly described as follows: Beginning at a point having Coordinates of X = 2,318,740.00 and Y = 260,316.00; thence North 30 degrees 00 minutes 00 seconds West 15,032.82 feet to a point having Coordinates of X = 2,311,223.59 and Y = 273,334.80; thence North 47 degrees 48 minutes 20 seconds East 980.93 feet to the southwest corner of State Lease No. 16126 having Coordinates of X = 2,311,950.33 and Y = 273,993.64; thence along the south boundary of said State Lease No. 16126 North 47 degrees 48 minutes 20 seconds East 729.58 feet to its Southeast corner having Coordinates of X = 2,312,490.85 and Y = 274,483.66; thence North 44 degrees 30 minutes 03 seconds East 2,125.99 feet to a point having Coordinates of X = 2,313,981.00 and Y = 276,000.00; thence East 3000.00 feet to a point having Coordinates of X = 2,316,981.00 and Y = 276,000.00; thence South 30 degrees 00 minutes 00 seconds East for 12,518.00 feet to a point having Coordinates of X = 2,323,240.00 and Y = 265,159.09; thence South for 4,843.09 feet to the southeast corner of within described tract, having Coordinates of X = 2,323,240.00 and Y = 260,316.00; thence West for 4,500.00 feet to the point of beginning, containing approximately **385 acres**, all as more particularly outlined on a plat on file in the Office of Mineral Resources, Department of Natural Resources. All bearings, distances and coordinates are based on Louisiana Coordinate System of 1927, (North or South Zone), where applicable.

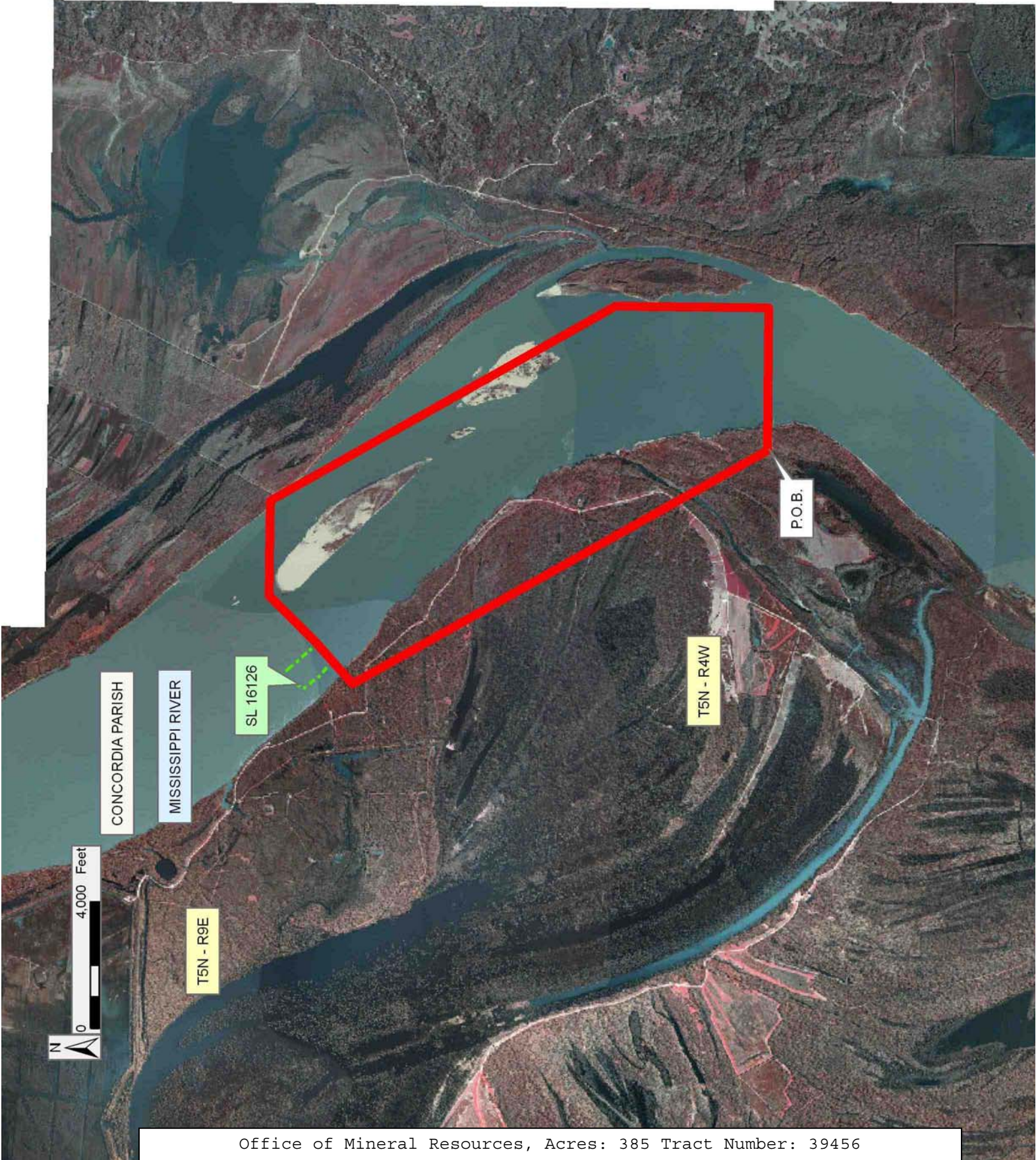
NOTE: The above description of the Tract nominated for lease has been provided and corrected, where required, exclusively by the nomination party. Any mineral lease selected from this Tract and awarded by the Louisiana State Mineral Board shall be without warranty of any kind, either express, implied, or statutory, including, but not limited to, the implied warranties of merchantability and fitness for a particular purpose. Should the mineral lease awarded by the Louisiana State Mineral Board be subsequently modified, cancelled or abrogated due to the existence of conflicting leases, operating agreements, private claims or other future obligations or conditions which may affect all or any portion of the leased Tract, it shall not relieve the Lessee of the obligation to pay any bonus due thereon to the Louisiana State Mineral Board, nor shall the Louisiana State Mineral Board be obligated to refund any consideration paid by the Lessor prior to such modification, cancellation, or abrogation, including, but not limited to, bonuses, rentals and royalties.

Applicant: LESLIE M. COOPER

Bidder	Cash Payment	Price/Acre	Rental	Oil	Gas	Other

Legend

- 07110028
- Active_Leases
- DOQQ2004



TRACT 39457 - Iberia and St. Martin Parishes, Louisiana

All of the lands now or formerly constituting the beds and bottoms of all water bodies of every nature and description as to which title is vested in the State of Louisiana, together with all islands arising therein and other lands formed by accretion or by reliction, where allowed by law, excepting tax adjudicated lands, and not presently under mineral lease or if under a mineral lease, that lease does not contain the rights for solid minerals on November 14, 2007, situated in Iberia and St. Martin Parishes, Louisiana, and more particularly described as follows: Beginning at a point, being the Southwest corner of the Northern retention of State Lease No. 293, having Coordinates of X = 1,899,856.40 and Y = 506,008.70; thence East 10,080.40 feet along the Southern boundary of the Northern retention of State Lease No. 293 to a point having Coordinates of X = 1,909,936.80 and Y = 506,008.70; thence Northerly 45.41 feet along the Southern boundary of the Northern retention of State Lease No. 293 to a point having Coordinates of X = 1,909,932.93 and Y = 506,053.94; thence Northeasterly 4,570.57 feet along the Southern boundary of the Northern retention of State Lease No. 293 to a point having Coordinates of X = 1,913,768.93 and Y = 508,538.93; thence East Southeasterly 1,091.76 feet along the Southern boundary of the Northern retention of State Lease No. 293 to a point having Coordinates of X = 1,914,849.92 and Y = 508,385.94; thence East 3,306.36 feet to a point having Coordinates of X = 1,918,156.28 and Y = 508,385.94; thence South 5,650.02 feet to a point having Coordinates of X = 1,918,156.28 and Y = 502,735.92; thence West 2,874.37 feet to a point, being the Northeast corner of the Southern retention of State Lease No. 293, having Coordinates of X = 1,915,281.91 and Y = 502,735.92; thence West Southwesterly 2,176.07 feet along the Northern boundary of the Southern retention of State Lease No. 293 to a point having Coordinates of X = 1,913,138.92 and Y = 502,357.93; thence West Southwesterly 2,875.20 feet along the Northern boundary of the Southern retention of State Lease No. 293 to a point having Coordinates of X = 1,910,273.92 and Y = 502,115.93; thence West 1,954.02 feet along the Northern boundary of the Southern retention of State Lease No. 293 to a point having Coordinates of X = 1,908,319.90 and Y = 502,115.93; thence West 8,463.50 feet to a point having Coordinates of X = 1,899,856.40 and Y = 502,115.93; thence North 3,892.77 feet to the point of beginning, containing approximately **1,290.06 acres**, all as more particularly outlined on a plat on file in the Office of Mineral Resources, Department of Natural Resources. All bearings, distances and coordinates are based on Louisiana Coordinate System of 1927, (North or South Zone), where applicable.

NOTE: The above description of the Tract nominated for lease has been provided and corrected, where required, exclusively by the nomination party. Any mineral lease selected from this Tract and awarded by the Louisiana State Mineral Board shall be without warranty of any kind, either express, implied, or statutory, including, but not limited to, the implied warranties of merchantability and fitness for a particular purpose. Should the mineral lease awarded by the Louisiana State Mineral

Board be subsequently modified, cancelled or abrogated due to the existence of conflicting leases, operating agreements, private claims or other future obligations or conditions which may affect all or any portion of the leased Tract, it shall not relieve the Lessee of the obligation to pay any bonus due thereon to the Louisiana State Mineral Board, nor shall the Louisiana State Mineral Board be obligated to refund any consideration paid by the Lessor prior to such modification, cancellation, or abrogation, including, but not limited to, bonuses, rentals and royalties.

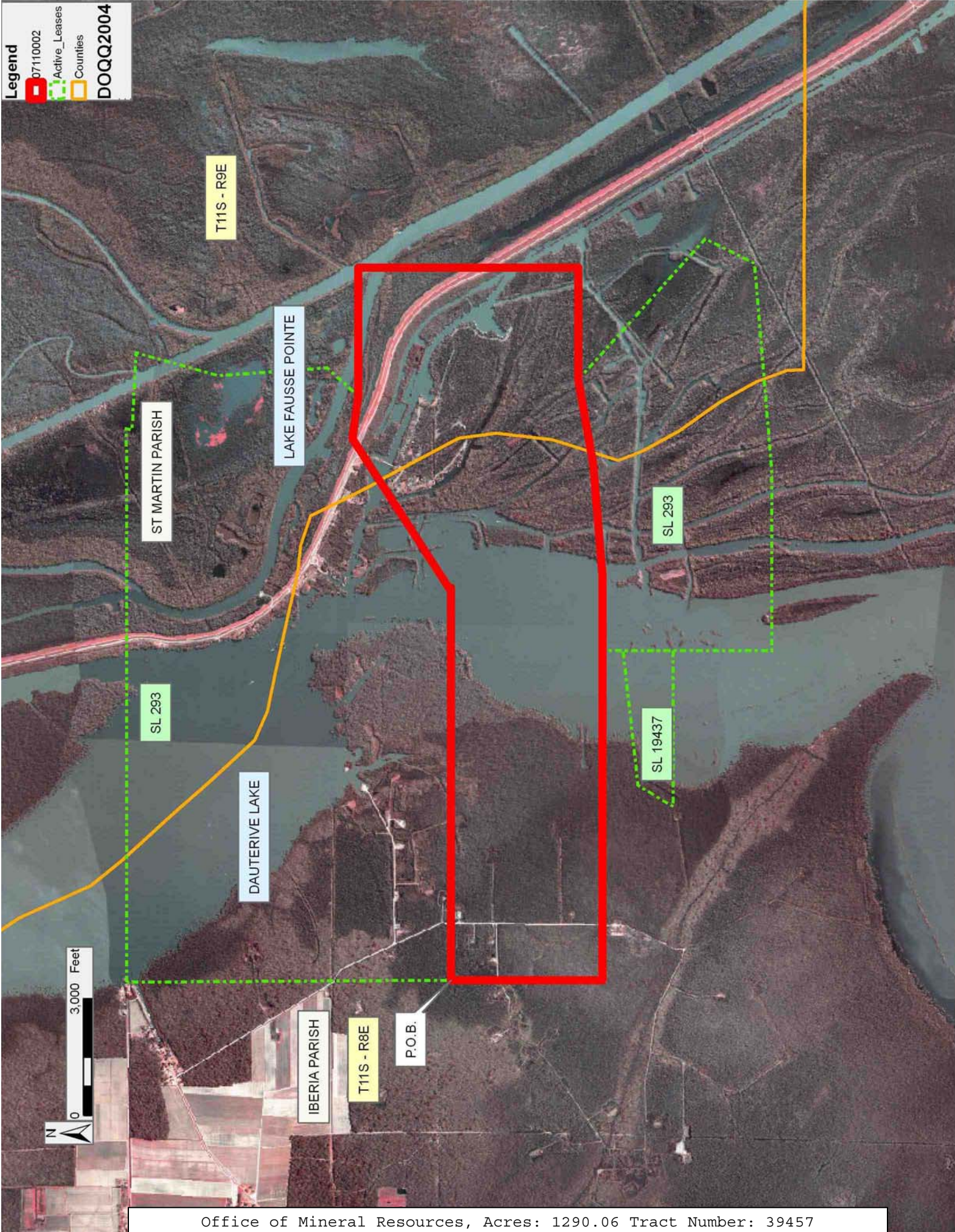
Applicant: WCJ ENTERPRISES, INC.

Bidder	Cash Payment	Price/Acre	Rental	Oil	Gas	Other

Legend

-  07110002
-  Active_Leases
-  Counties

DOQQ2004



TRACT 39458 - Assumption Parish, Louisiana

All of the lands now or formerly constituting the beds and bottoms of all water bodies of every nature and description as to which title is vested in the State of Louisiana, together with all islands arising therein and other lands formed by accretion or by reliction, where allowed by law, excepting tax adjudicated lands, and not presently under mineral lease on November 14, 2007, situated in Assumption Parish, Louisiana, and more particularly described as follows: Beginning at a point having Coordinates of X = 2,058,774.61 and Y = 488,524.67; thence East 2,000.00 feet to a point having Coordinates of X = 2,060,774.61 and Y = 488,524.67; thence South 2,000.00 feet to a point having Coordinates of X = 2,060,774.61 and Y = 486,524.67; thence West 2,000.00 feet to a point having Coordinates of X = 2,058,774.61 and Y = 486,524.67; thence North 2,000.00 feet to the point of beginning, containing approximately **5 acres**, all as more particularly outlined on a plat on file in the Office of Mineral Resources, Department of Natural Resources. All bearings, distances and coordinates are based on Louisiana Coordinate System of 1927, (North or South Zone), where applicable.

NOTE: The above description of the Tract nominated for lease has been provided and corrected, where required, exclusively by the nomination party. Any mineral lease selected from this Tract and awarded by the Louisiana State Mineral Board shall be without warranty of any kind, either express, implied, or statutory, including, but not limited to, the implied warranties of merchantability and fitness for a particular purpose. Should the mineral lease awarded by the Louisiana State Mineral Board be subsequently modified, cancelled or abrogated due to the existence of conflicting leases, operating agreements, private claims or other future obligations or conditions which may affect all or any portion of the leased Tract, it shall not relieve the Lessee of the obligation to pay any bonus due thereon to the Louisiana State Mineral Board, nor shall the Louisiana State Mineral Board be obligated to refund any consideration paid by the Lessor prior to such modification, cancellation, or abrogation, including, but not limited to, bonuses, rentals and royalties.

Applicant: PROLAND, LLC

Bidder	Cash Payment	Price/Acre	Rental	Oil	Gas	Other



TRACT 39459 - Cameron Parish, Louisiana

All of the lands now or formerly constituting the beds and bottoms of all water bodies of every nature and description as to which title is vested in the State of Louisiana, together with all islands arising therein and other lands formed by accretion or by reliction, where allowed by law, excepting tax adjudicated lands, and not presently under mineral lease or if under a mineral lease, that lease does not contain the rights for solid minerals on November 14, 2007, situated in Cameron Parish, Louisiana, and more particularly described as follows: Beginning at a point having Coordinates of X = 1,358,937.00 and Y = 472,423.00; thence East 10,435.00 feet to a point having Coordinates of X = 1,369,372.00 and Y = 472,423.00; thence South 10,435.00 feet to a point having Coordinates of X = 1,369,372.00 and Y = 461,988.00; thence West 10,435.00 feet to a point having Coordinates of X = 1,358,937.00 and Y = 461,988.00; thence North 10,435.00 feet to the point of beginning, containing approximately **1,802.71 acres**, all as more particularly outlined on a plat on file in the Office of Mineral Resources, Department of Natural Resources. All bearings, distances and coordinates are based on Louisiana Coordinate System of 1927, (North or South Zone), where applicable.

NOTE: The above description of the Tract nominated for lease has been provided and corrected, where required, exclusively by the nomination party. Any mineral lease selected from this Tract and awarded by the Louisiana State Mineral Board shall be without warranty of any kind, either express, implied, or statutory, including, but not limited to, the implied warranties of merchantability and fitness for a particular purpose. Should the mineral lease awarded by the Louisiana State Mineral Board be subsequently modified, cancelled or abrogated due to the existence of conflicting leases, operating agreements, private claims or other future obligations or conditions which may affect all or any portion of the leased Tract, it shall not relieve the Lessee of the obligation to pay any bonus due thereon to the Louisiana State Mineral Board, nor shall the Louisiana State Mineral Board be obligated to refund any consideration paid by the Lessor prior to such modification, cancellation, or abrogation, including, but not limited to, bonuses, rentals and royalties.

NOTE: The State of Louisiana does hereby reserve, and this lease shall be subject to, the imprescriptible right of surface use in the nature of a servitude in favor of the Department of Natural Resources, including its Offices and Commissions, for the sole purpose of implementing, constructing, servicing and maintaining approved coastal zone management and/or restoration projects. Utilization of any and all rights derived under this lease by the mineral lessee, its agents, successors or assigns, shall not interfere with nor hinder the reasonable surface use by the Department of Natural Resources, its Offices or Commissions, as herein above reserved.

Applicant: WCJ ENTERPRISES, INC.

Bidder	Cash Payment	Price/Acre	Rental	Oil	Gas	Other

CALCASIEU LAKE



CAMERON PARISH

T13S - R10W

T13S - R10W

P.O.B.



TRACT 39460 - Cameron Parish, Louisiana

All of the lands now or formerly constituting the beds and bottoms of all water bodies of every nature and description as to which title is vested in the State of Louisiana, together with all islands arising therein and other lands formed by accretion or by reliction, where allowed by law, excepting tax adjudicated lands, and not presently under mineral lease or if under a mineral lease, that lease does not contain the rights for solid minerals on November 14, 2007, situated in Cameron Parish, Louisiana, and more particularly described as follows: Beginning at a point having Coordinates of X = 1,381,200.00 and Y = 452,381.00; thence East 10,435.00 feet to a point having Coordinates of X = 1,391,635.00 and Y = 452,381.00; thence South 10,435.00 feet to a point having Coordinates of X = 1,391,635.00 and Y = 441,946.00; thence West 10,435.00 feet to a point having Coordinates of X = 1,381,200.00 and Y = 441,946.00; thence North 10,435.00 feet to the point of beginning, containing approximately **2,499.75 acres**, all as more particularly outlined on a plat on file in the Office of Mineral Resources, Department of Natural Resources. All bearings, distances and coordinates are based on Louisiana Coordinate System of 1927, (North or South Zone), where applicable.

NOTE: The above description of the Tract nominated for lease has been provided and corrected, where required, exclusively by the nomination party. Any mineral lease selected from this Tract and awarded by the Louisiana State Mineral Board shall be without warranty of any kind, either express, implied, or statutory, including, but not limited to, the implied warranties of merchantability and fitness for a particular purpose. Should the mineral lease awarded by the Louisiana State Mineral Board be subsequently modified, cancelled or abrogated due to the existence of conflicting leases, operating agreements, private claims or other future obligations or conditions which may affect all or any portion of the leased Tract, it shall not relieve the Lessee of the obligation to pay any bonus due thereon to the Louisiana State Mineral Board, nor shall the Louisiana State Mineral Board be obligated to refund any consideration paid by the Lessor prior to such modification, cancellation, or abrogation, including, but not limited to, bonuses, rentals and royalties.

NOTE: The State of Louisiana does hereby reserve, and this lease shall be subject to, the imprescriptible right of surface use in the nature of a servitude in favor of the Department of Natural Resources, including its Offices and Commissions, for the sole purpose of implementing, constructing, servicing and maintaining approved coastal zone management and/or restoration projects. Utilization of any and all rights derived under this lease by the mineral lessee, its agents, successors or assigns, shall not interfere with nor hinder the reasonable surface use by the Department of Natural Resources, its Offices or Commissions, as herein above reserved.

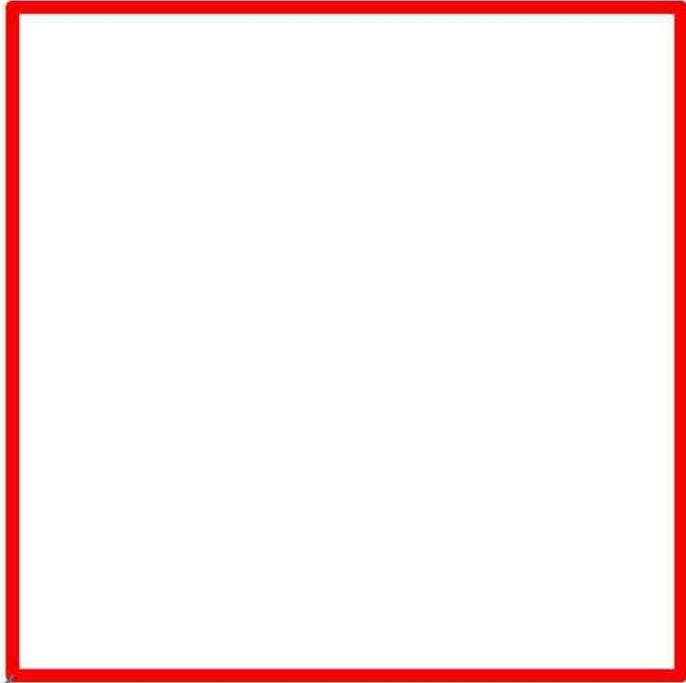
Applicant: WCJ ENTERPRISES, INC.

Bidder	Cash Payment	Price/Acre	Rental	Oil	Gas	Other

CAMERON PARISH

CALCASIEU LAKE

P.O.B.



TRACT 39461 - Cameron Parish, Louisiana

All lands, including lands added by accretion and reliction and lands now or formerly constituting the beds and bottoms of all water bodies of every nature and description, owned by and not presently under mineral lease as of November 14, 2007 from the State of Louisiana, situated in Cameron Parish, Louisiana, and being more fully described as follows: Beginning at a point having Coordinates of X = 1,302,903.42 and Y = 406,311.00; thence North 83 degrees 30 minutes 48 seconds East 7,701.17 feet to a point having Coordinates of X = 1,310,555.29 and Y = 407,181.00; thence South 626.32 feet to a point on the Louisiana Coastline, as decreed by the Supreme Court of the United States, as determined by a Special Master appointed therein, in litigation styled *United States v. State of Louisiana et al No. 9 Original*, in 1975, having Coordinates of X = 1,310,555.29 and Y = 406,554.68; thence along said Louisiana Coastline the following courses: Southwesterly on a straight line to a point having Coordinates of X = 1,307,312 and Y = 406,260 and Southwesterly on a straight line to a point having Coordinates of X = 1,302,903.42 and Y = 405,754.67; thence North 556.33 feet to the point of beginning, containing approximately **10 acres**, all as more particularly outlined on a plat on file in the Office of Mineral Resources, Department of Natural Resources. All bearings, distances and coordinates are based on Louisiana Coordinate System of 1927, (North or South Zone), where applicable.

NOTE: The above description of the Tract nominated for lease has been provided and corrected, where required, exclusively by the nomination party. Any mineral lease selected from this Tract and awarded by the Louisiana State Mineral Board shall be without warranty of any kind, either express, implied, or statutory, including, but not limited to, the implied warranties of merchantability and fitness for a particular purpose. Should the mineral lease awarded by the Louisiana State Mineral Board be subsequently modified, cancelled or abrogated due to the existence of conflicting leases, operating agreements, private claims or other future obligations or conditions which may affect all or any portion of the leased Tract, it shall not relieve the Lessee of the obligation to pay any bonus due thereon to the Louisiana State Mineral Board, nor shall the Louisiana State Mineral Board be obligated to refund any consideration paid by the Lessor prior to such modification, cancellation, or abrogation, including, but not limited to, bonuses, rentals and royalties.

NOTE: The State of Louisiana does hereby reserve, and this lease shall be subject to, the imprescriptible right of surface use in the nature of a servitude in favor of the Department of Natural Resources, including its Offices and Commissions, for the sole purpose of implementing, constructing, servicing and maintaining approved coastal zone management and/or restoration projects. Utilization of any and all rights derived under this lease by the mineral lessee, its agents, successors or assigns, shall not interfere with nor hinder the reasonable surface use by the Department of Natural Resources, its Offices or Commissions, as herein above reserved.

Applicant: FRANZ P. SCHOEFFLER

Bidder	Cash Payment	Price/Acre	Rental	Oil	Gas	Other

CAMERON PARISH

T15S - R12W

GULF OF MEXICO

WEST CAMERON AREA, REVISED

P.O.B.



TRACT 39462 - St. Mary Parish, Louisiana

All of the lands now or formerly constituting the beds and bottoms of all water bodies of every nature and description as to which title is vested in the State of Louisiana, together with all islands arising therein and other lands formed by accretion or by reliction, where allowed by law, excepting tax adjudicated lands, and not presently under mineral lease or if under a mineral lease, that lease does not contain the rights for solid minerals on November 14, 2007, situated in St. Mary Parish, Louisiana, and more particularly described as follows: Beginning at a point having Coordinates of X = 1,874,926.00 and Y = 398,595.00; thence East 10,435.00 feet to a point having Coordinates of X = 1,885,361.00 and Y = 398,595.00; thence South approximately 8,118 feet to a point of intersection with the North boundary of State Lease No. 340H, having an X Coordinate of 1,885,361.00; thence meandering Westerly along the North Boundary of said State Lease No. 340H, to a point having an X Coordinate of 1,874,926.00; thence North approximately 6,857 feet to the point of beginning, **LESS AND EXCEPT** any portion of State Lease No. 340 that may lie within the above described tract, containing approximately **233.45 acres**, all as more particularly outlined on a plat on file in the Office of Mineral Resources, Department of Natural Resources. All bearings, distances and coordinates are based on Louisiana Coordinate System of 1927, (North or South Zone), where applicable.

NOTE: The above description of the Tract nominated for lease has been provided and corrected, where required, exclusively by the nomination party. Any mineral lease selected from this Tract and awarded by the Louisiana State Mineral Board shall be without warranty of any kind, either express, implied, or statutory, including, but not limited to, the implied warranties of merchantability and fitness for a particular purpose. Should the mineral lease awarded by the Louisiana State Mineral Board be subsequently modified, cancelled or abrogated due to the existence of conflicting leases, operating agreements, private claims or other future obligations or conditions which may affect all or any portion of the leased Tract, it shall not relieve the Lessee of the obligation to pay any bonus due thereon to the Louisiana State Mineral Board, nor shall the Louisiana State Mineral Board be obligated to refund any consideration paid by the Lessor prior to such modification, cancellation, or abrogation, including, but not limited to, bonuses, rentals and royalties.

NOTE: The State of Louisiana does hereby reserve, and this lease shall be subject to, the imprescriptible right of surface use in the nature of a servitude in favor of the Department of Natural Resources, including its Offices and Commissions, for the sole purpose of implementing, constructing, servicing and maintaining approved coastal zone management and/or restoration projects. Utilization of any and all rights derived under this lease by the mineral lessee, its agents, successors or assigns, shall not interfere with nor hinder the reasonable surface use by the Department of Natural Resources, its Offices or Commissions, as herein above reserved.

NOTE: The Department of Wildlife and Fisheries has designated certain areas in the coastal waters of the State of Louisiana as Oyster Seed Bed Areas. The exact location of those Seed Bed Areas must be obtained from the Department of Wildlife and Fisheries and any work done under a mineral lease from the State of Louisiana may necessarily be conducted in conformity with the rules and regulations promulgated by the said Department of Wildlife and Fisheries for Oyster Seed Bed Areas.

Applicant: WCJ ENTERPRISES, INC.

Bidder	Cash Payment	Price/Acre	Rental	Oil	Gas	Other

Legend
07110004
Active_Leases
DOQQ2004

T14S - R8E

ST MARY PARISH

INTRACOASTAL WATERWAY

P.O.B.

SL 18840

SL 18576

ATCHAFALAYA BAY



TRACT 39463 - Cameron Parish, Louisiana

All lands, including lands added by accretion and reliction and lands now or formerly constituting the beds and bottoms of all water bodies of every nature and description, owned by and not presently under mineral lease as of November 14, 2007 from the State of Louisiana, situated in Cameron Parish, Louisiana, and being more fully described as follows: Beginning at a point having Coordinates of X = 1,291,413.00 and Y = 404,765.34; thence North 82 degrees 20 minutes 19 seconds East 11,593.91 feet to a point having Coordinates of X = 1,302,903.42 and Y = 406,311.00; thence South 556.33 feet to a point on the Louisiana Coastline, as decreed by the Supreme Court of the United States, as determined by a Special Master appointed therein, in litigation styled *United States v. State of Louisiana et al No. 9 Original*, in 1975, having Coordinates of X = 1,302,903.42 and Y = 405,754.67; thence along said Louisiana Coastline the following courses: Southwesterly on a straight line to a point having Coordinates of X = 1,296,747 and Y = 405,049 and Southwesterly on a straight line to a point having Coordinates of X = 1,291,413 and Y = 404,205; thence North 560.34 feet to the point of beginning, containing approximately **19 acres**, all as more particularly outlined on a plat on file in the Office of Mineral Resources, Department of Natural Resources. All bearings, distances and coordinates are based on Louisiana Coordinate System of 1927, (North or South Zone), where applicable.

NOTE: The above description of the Tract nominated for lease has been provided and corrected, where required, exclusively by the nomination party. Any mineral lease selected from this Tract and awarded by the Louisiana State Mineral Board shall be without warranty of any kind, either express, implied, or statutory, including, but not limited to, the implied warranties of merchantability and fitness for a particular purpose. Should the mineral lease awarded by the Louisiana State Mineral Board be subsequently modified, cancelled or abrogated due to the existence of conflicting leases, operating agreements, private claims or other future obligations or conditions which may affect all or any portion of the leased Tract, it shall not relieve the Lessee of the obligation to pay any bonus due thereon to the Louisiana State Mineral Board, nor shall the Louisiana State Mineral Board be obligated to refund any consideration paid by the Lessor prior to such modification, cancellation, or abrogation, including, but not limited to, bonuses, rentals and royalties.

NOTE: The State of Louisiana does hereby reserve, and this lease shall be subject to, the imprescriptible right of surface use in the nature of a servitude in favor of the Department of Natural Resources, including its Offices and Commissions, for the sole purpose of implementing, constructing, servicing and maintaining approved coastal zone management and/or restoration projects. Utilization of any and all rights derived under this lease by the mineral lessee, its agents, successors or assigns, shall not interfere with nor hinder the reasonable surface use by the Department of Natural Resources, its Offices or Commissions, as herein above reserved.

Applicant: FRANZ P. SCHOEFFLER

Bidder	Cash Payment	Price/Acre	Rental	Oil	Gas	Other

Legend
07110015
Active_Leases
DOQQ2004

