

TRACT 39447 - Portion of Block 9, West Cameron Area, Revised, Cameron Parish, Louisiana

The beds and bottoms of all water bodies belonging to the State of Louisiana located in Block 9, West Cameron Area, Revised, together with any present lands formed by accretion to the shoreline or islands formed therein, located in Cameron Parish, Louisiana, owned by and not presently under mineral lease as of November 14, 2007, from the State of Louisiana, the geographical area of which is more fully described as follows: Beginning at the Northwest corner of Block 9, West Cameron Area, Revised, also being a point on the Louisiana Coastline, as decreed by the Supreme Court of the United States, as determined by a Special Master appointed therein, in litigation styled *United States v. State of Louisiana et al No. 9 Original*, in 1975, having Coordinates of X = 1,302,903.42 and Y = 405,754.67; thence along said Louisiana Coastline the following courses: Northeasterly on a straight line to a point having Coordinates X = 1,307,312 and Y = 406,260 and Northeasterly on a straight line to a point having Coordinates of X = 1,310,555.29 and Y = 406,554.68; thence South 1,559.43 feet to the Northernmost Northwest corner of State Lease No. 18283 having Coordinates of X = 1,310,555.29 and Y = 404,995.25; thence along the boundary of said State Lease No. 18283 the following courses: South 43 degrees 43 minutes 48 seconds West 3,796.00 feet and South 16 degrees 20 minutes 05 seconds East 1,920.16 feet to its Southwest corner, also being a point on the North boundary of State Lease No. 18287 having Coordinates of X = 1,308,471.31 and Y = 400,409.59; thence along the boundary of said State Lease No. 18287 the following courses: West 1,567.89 feet and South 5,218.87 feet to the Northeast corner of State Lease No. 18356 having Coordinates of X = 1,306,903.42 and Y = 395,190.72; thence along the boundary of said State Lease No. 18356 the following courses: South 53 degrees 56 minutes 53 seconds West 358.26 feet and North 89 degrees 40 minutes 11 seconds West 3,710.41 feet to its Northwest corner, also being a point on the West line of said Block 9 having Coordinates of X = 1,302,903.42 and Y = 395,001.27; thence North 10,753.40 feet along the West line of said Block 9 to the point of beginning, containing approximately **1,327.89 acres**, all as more particularly outlined on a plat on file in the Office of Mineral Resources, Department of Natural Resources. All bearings, distances and coordinates are based on Louisiana Coordinate System of 1927, (North or South Zone).

NOTE: The above description of the Tract nominated for lease has been provided and corrected, where required, exclusively by the nomination party. Any mineral lease selected from this Tract and awarded by the Louisiana State Mineral Board shall be without warranty of any kind, either express, implied, or statutory, including, but not limited to, the implied warranties of merchantability and fitness for a particular purpose. Should the mineral lease awarded by the Louisiana State Mineral Board be subsequently modified, cancelled or abrogated due to the existence of conflicting leases, operating agreements, private claims or other future obligations or conditions which may affect all or any portion of the leased Tract, it shall not relieve the Lessee of the obligation to

pay any bonus due thereon to the Louisiana State Mineral Board, nor shall the Louisiana State Mineral Board be obligated to refund any consideration paid by the Lessor prior to such modification, cancellation, or abrogation, including, but not limited to, bonuses, rentals and royalties.

NOTE: The State of Louisiana does hereby reserve, and this lease shall be subject to, the imprescriptible right of surface use in the nature of a servitude in favor of the Department of Natural Resources, including its Offices and Commissions, for the sole purpose of implementing, constructing, servicing and maintaining approved coastal zone management and/or restoration projects. Utilization of any and all rights derived under this lease by the mineral lessee, its agents, successors or assigns, shall not interfere with nor hinder the reasonable surface use by the Department of Natural Resources, its Offices or Commissions, as herein above reserved.

Applicant: FRANZ P. SCHOEFFLER

Bidder	Cash Payment	Price/Acre	Rental	Oil	Gas	Other

Legend

- 07110017
- Blocks
- Active_Leases



CAMERON PARISH

P.O.B.

WC0010

GULF OF MEXICO

WEST CAMERON AREA, REVISED

WC0009

SL 18283

SL 18287

SL 18356

SL 18355

SL 18284

TRACT 39448 - Portion of Block 10, West Cameron Area, Revised, Cameron Parish, Louisiana

The beds and bottoms of all water bodies belonging to the State of Louisiana located in Block 10, West Cameron Area, Revised, together with any present lands formed by accretion to the shoreline or islands formed therein, located in Cameron Parish, Louisiana, owned by and not presently under mineral lease as of November 14, 2007, from the State of Louisiana, the geographical area of which is more fully described as follows: Beginning at the Northeast corner of Block 10, West Cameron Area, Revised, also being a point on the Louisiana Coastline, as decreed by the Supreme Court of the United States, as determined by a Special Master appointed therein, in litigation styled *United States v. State of Louisiana et al No. 9 Original*, in 1975, having Coordinates of X = 1,302,903.42 and Y = 405,754.67; thence South 10,554.67 feet along the East line of said Block 10 to the Northeast corner of State Lease No. 18355 having Coordinates of X = 1,302,903.42 and Y = 395,200.00; thence West 3,273.42 feet along the North boundary of said State Lease No. 18355 to the Southeast corner of State Lease No. 19301 having Coordinates of X = 1,299,630.00 and Y = 395,200.00; thence North 45 degrees 04 minutes 25 seconds West 8,452.68 feet along the East boundary of said State Lease No. 19301 to its Northeast corner, also being the Southeast corner of State Lease No. 18801 having Coordinates of X = 1,293,645.38 and Y = 401,169.27; thence North 36 degrees 19 minutes 47 seconds West 3,768.18 feet along the East boundary of said State Lease No. 18801 to its Northeast corner, also being a point on said Louisiana Coastline having Coordinates of X = 1,291,413 and Y = 404,205; thence along said Louisiana Coastline the following courses: Northeasterly on a straight line to a point having Coordinates of X = 1,296,747 and Y = 405,049 and Northeasterly on a straight line to the point of beginning, containing approximately **1,802.44 acres**, all as more particularly outlined on a plat on file in the Office of Mineral Resources, Department of Natural Resources. All bearings, distances and coordinates are based on Louisiana Coordinate System of 1927, (North or South Zone).


NOTE: The above description of the Tract nominated for lease has been provided and corrected, where required, exclusively by the nomination party. Any mineral lease selected from this Tract and awarded by the Louisiana State Mineral Board shall be without warranty of any kind, either express, implied, or statutory, including, but not limited to, the implied warranties of merchantability and fitness for a particular purpose. Should the mineral lease awarded by the Louisiana State Mineral Board be subsequently modified, cancelled or abrogated due to the existence of conflicting leases, operating agreements, private claims or other future obligations or conditions which may affect all or any portion of the leased Tract, it shall not relieve the Lessee of the obligation to pay any bonus due thereon to the Louisiana State Mineral Board, nor shall the Louisiana State Mineral Board be obligated to refund any consideration paid by the Lessor prior to such modification, cancellation, or abrogation, including, but not limited to, bonuses, rentals and royalties.

NOTE: The State of Louisiana does hereby reserve, and this lease shall be subject to, the imprescriptible right of surface use in the nature of a servitude in favor of the Department of Natural Resources, including its Offices and Commissions, for the sole purpose of implementing, constructing, servicing and maintaining approved coastal zone management and/or restoration projects. Utilization of any and all rights derived under this lease by the mineral lessee, its agents, successors or assigns, shall not interfere with nor hinder the reasonable surface use by the Department of Natural Resources, its Offices or Commissions, as herein above reserved.

Applicant: FRANZ P. SCHOEFFLER

Bidder	Cash Payment	Price/Acre	Rental	Oil	Gas	Other

Legend

-  07110018
-  Blocks
-  Active_Leases

CAMERON PARISH



P.O.B.

WC0009

SL 18356

SL 18284

SL 18355

SL 18801

SL 19301

WC0010

WC0011

GULF OF MEXICO

WEST CAMERON AREA, REVISED

TRACT 39449 - Portion of Block 11, West Cameron Area, Revised, Cameron Parish, Louisiana

The beds and bottoms of all water bodies belonging to the State of Louisiana located in Block 11, West Cameron Area, Revised, together with any present lands formed by accretion to the shoreline or islands formed therein, located in Cameron Parish, Louisiana, owned by and not presently under mineral lease as of November 14, 2007, from the State of Louisiana, the geographical area of which is more fully described as follows: Beginning at a point on the Louisiana Coastline, as decreed by the Supreme Court of the United States, as determined by a Special Master appointed therein, in litigation styled *United States v. State of Louisiana et al No. 9 Original*, in 1975, said point also being the Northeast corner of Block 11, West Cameron Area, Revised, having Coordinates of X = 1,288,145.38 and Y = 403,746.45; thence South 2,577.45 feet along the East line of said Block 11 to the Northeast corner of State Lease No. 18361 having Coordinates of X = 1,288,145.38 and Y = 401,169.00; thence West 2,000.00 feet along the North boundary of said State Lease No. 18361 to its Northwest corner having Coordinates of X = 1,286,145.38 and Y = 401,169.00; thence North 2,296.99 feet to a point on said Louisiana Coastline having Coordinates of X = 1,286,145.38 and Y = 403,465.99; thence along said Louisiana Coastline the following courses: Northeasterly on a straight line to a point having Coordinates of X = 1,286,154 and Y = 403,467 and Northeasterly on a straight line to the point of beginning, containing approximately **111.90 acres**, all as more particularly outlined on a plat on file in the Office of Mineral Resources, Department of Natural Resources. All bearings, distances and coordinates are based on Louisiana Coordinate System of 1927, (North or South Zone).

NOTE: The above description of the Tract nominated for lease has been provided and corrected, where required, exclusively by the nomination party. Any mineral lease selected from this Tract and awarded by the Louisiana State Mineral Board shall be without warranty of any kind, either express, implied, or statutory, including, but not limited to, the implied warranties of merchantability and fitness for a particular purpose. Should the mineral lease awarded by the Louisiana State Mineral Board be subsequently modified, cancelled or abrogated due to the existence of conflicting leases, operating agreements, private claims or other future obligations or conditions which may affect all or any portion of the leased Tract, it shall not relieve the Lessee of the obligation to pay any bonus due thereon to the Louisiana State Mineral Board, nor shall the Louisiana State Mineral Board be obligated to refund any consideration paid by the Lessor prior to such modification, cancellation, or abrogation, including, but not limited to, bonuses, rentals and royalties.

NOTE: The State of Louisiana does hereby reserve, and this lease shall be subject to, the imprescriptible right of surface use in the nature of a servitude in favor of the Department of Natural Resources, including its Offices and Commissions, for the sole purpose of implementing, constructing, servicing and maintaining approved coastal zone management

and/or restoration projects. Utilization of any and all rights derived under this lease by the mineral lessee, its agents, successors or assigns, shall not interfere with nor hinder the reasonable surface use by the Department of Natural Resources, its Offices or Commissions, as herein above reserved.

Applicant: FRANZ P. SCHOEFFLER

Bidder	Cash Payment	Price/Acre	Rental	Oil	Gas	Other

Legend

-  07110011
-  Blocks
-  Active_Leases



CAMERON PARISH

P.O.B.

WC0010

SL 18801

SL 19301

SL 18362

SL 18361

GULF OF MEXICO

WEST CAMERON AREA, REVISED

WC0011

TRACT 39450 - Portion of Block 11, West Cameron Area, Revised, Cameron Parish, Louisiana

The beds and bottoms of all water bodies belonging to the State of Louisiana located in Block 11, West Cameron Area, Revised, together with any present lands formed by accretion to the shoreline or islands formed therein, located in Cameron Parish, Louisiana, owned by and not presently under mineral lease as of November 14, 2007, from the State of Louisiana, the geographical area of which is more fully described as follows: Beginning at a point on the South line of Block 11, West Cameron Area, Revised, having Coordinates of X = 1,280,760.00 and Y = 393,790.24; thence North 9,045.76 feet to a point on the Louisiana Coastline, as decreed by the Supreme Court of the United States, as determined by a Special Master appointed therein, in litigation styled *United States v. State of Louisiana et al No. 9 Original*, in 1975, having Coordinates of X = 1,280,760 and Y = 402,836; thence Northeasterly on a straight line along said Louisiana Coastline to a point having Coordinates of X = 1,286,145.38 and Y = 403,465.99; thence South 2,296.99 feet to the Northwest corner of State Lease No. 18361 having Coordinates of X = 1,286,145.38 and Y = 401,169.00; thence along the boundary of said State Lease No. 18361 the following courses: South 703.01 feet and South 42 degrees 01 minutes 18 seconds East 2,987.70 feet to its Southernmost corner, also being a point on the East line of said Block 11 having Coordinates of X = 1,288,145.38 and Y = 398,246.45; thence South 4,456.21 feet along the East line of said Block 11 to its Southeast corner having Coordinates of X = 1,288,145.38 and Y = 393,790.24; thence West 7,385.38 feet along the South line of said Block 11 to the point of beginning, containing approximately **1,412.84 acres**, all as more particularly outlined on a plat on file in the Office of Mineral Resources, Department of Natural Resources. All bearings, distances and coordinates are based on Louisiana Coordinate System of 1927, (North or South Zone).

NOTE: The above description of the Tract nominated for lease has been provided and corrected, where required, exclusively by the nomination party. Any mineral lease selected from this Tract and awarded by the Louisiana State Mineral Board shall be without warranty of any kind, either express, implied, or statutory, including, but not limited to, the implied warranties of merchantability and fitness for a particular purpose. Should the mineral lease awarded by the Louisiana State Mineral Board be subsequently modified, cancelled or abrogated due to the existence of conflicting leases, operating agreements, private claims or other future obligations or conditions which may affect all or any portion of the leased Tract, it shall not relieve the Lessee of the obligation to pay any bonus due thereon to the Louisiana State Mineral Board, nor shall the Louisiana State Mineral Board be obligated to refund any consideration paid by the Lessor prior to such modification, cancellation, or abrogation, including, but not limited to, bonuses, rentals and royalties.

NOTE: The State of Louisiana does hereby reserve, and this lease shall be subject to, the imprescriptible right of surface use in the nature of a

servitude in favor of the Department of Natural Resources, including its Offices and Commissions, for the sole purpose of implementing, constructing, servicing and maintaining approved coastal zone management and/or restoration projects. Utilization of any and all rights derived under this lease by the mineral lessee, its agents, successors or assigns, shall not interfere with nor hinder the reasonable surface use by the Department of Natural Resources, its Offices or Commissions, as herein above reserved.

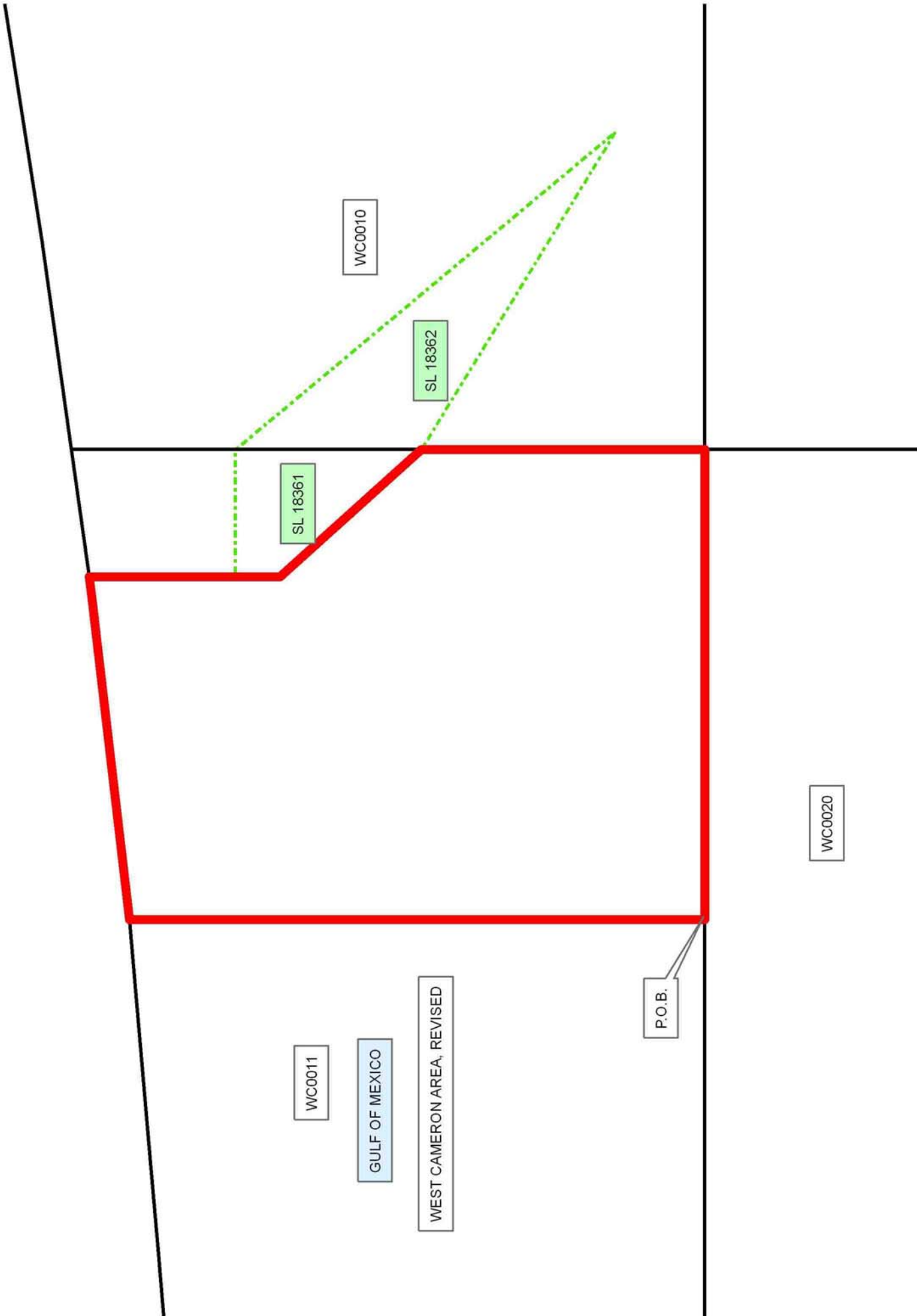
Applicant: FRANZ P. SCHOEFFLER

Bidder	Cash Payment	Price/Acre	Rental	Oil	Gas	Other

Legend

- 07110019
- Blocks
- Active_Leases

CAMERON PARISH



TRACT 39451 - Portion of Blocks 10, and 21, West Cameron Area, Revised, Cameron Parish, Louisiana

The beds and bottoms of all water bodies belonging to the State of Louisiana located in Blocks 10, and 21, West Cameron Area, Revised, together with any present lands formed by accretion to the shoreline or islands formed therein, located in Cameron Parish, Louisiana, owned by and not presently under mineral lease as of November 14, 2007, from the State of Louisiana, the geographical area of which is more fully described as follows: Beginning at a point on the West line of Block 10, West Cameron Area, Revised, also being the Southwest corner of State Lease No. 18362 having Coordinates of X = 1,288,145.38 and Y = 398,246.72; thence South 58 degrees 33 minutes 57 seconds East 5,842.00 feet along the boundary of said State Lease No. 18362 to its Southernmost corner, also being the Southwest corner of State Lease No. 19301 having Coordinates of X = 1,293,130.00 and Y = 395,200.00; thence East 3,380.00 feet along the South boundary of said State Lease No. 19301 to the Northwest corner of State Lease No. 18355 having Coordinates of X = 1,296,510.00 and Y = 395,200.00; thence South 1,409.76 feet along the West boundary of said State Lease No. 18355 to its Southwest corner, also being a point on the North line of Block 21, West Cameron Area, Revised, and also being a point on the North boundary of State Lease No. 17774 having Coordinates of X = 1,296,510.00 and Y = 393,790.24; thence along the boundary of said State Lease No. 17774 the following courses: West 9.18 feet and South 5,102.60 feet to its Southwest corner having Coordinates of X = 1,296,500.82 and Y = 388,687.64; thence West 8,355.44 feet to a point on the West line of said Block 21 having Coordinates of X = 1,288,145.38 and Y = 388,687.64; thence North 5,102.60 feet along the West line of said Block 21 to its Northwest corner also being the Southwest corner of said Block 10 having Coordinates of X = 1,288,145.38 and Y = 393,790.24; thence North 4,456.48 feet along the West line of said Block 10 to the point of beginning, containing approximately **1,423.78 acres**, all as more particularly outlined on a plat on file in the Office of Mineral Resources, Department of Natural Resources. All bearings, distances and coordinates are based on Louisiana Coordinate System of 1927, (North or South Zone).

NOTE: The above description of the Tract nominated for lease has been provided and corrected, where required, exclusively by the nomination party. Any mineral lease selected from this Tract and awarded by the Louisiana State Mineral Board shall be without warranty of any kind, either express, implied, or statutory, including, but not limited to, the implied warranties of merchantability and fitness for a particular purpose. Should the mineral lease awarded by the Louisiana State Mineral Board be subsequently modified, cancelled or abrogated due to the existence of conflicting leases, operating agreements, private claims or other future obligations or conditions which may affect all or any portion of the leased Tract, it shall not relieve the Lessee of the obligation to pay any bonus due thereon to the Louisiana State Mineral Board, nor shall the Louisiana State Mineral Board be obligated to refund any consideration

paid by the Lessor prior to such modification, cancellation, or abrogation, including, but not limited to, bonuses, rentals and royalties.

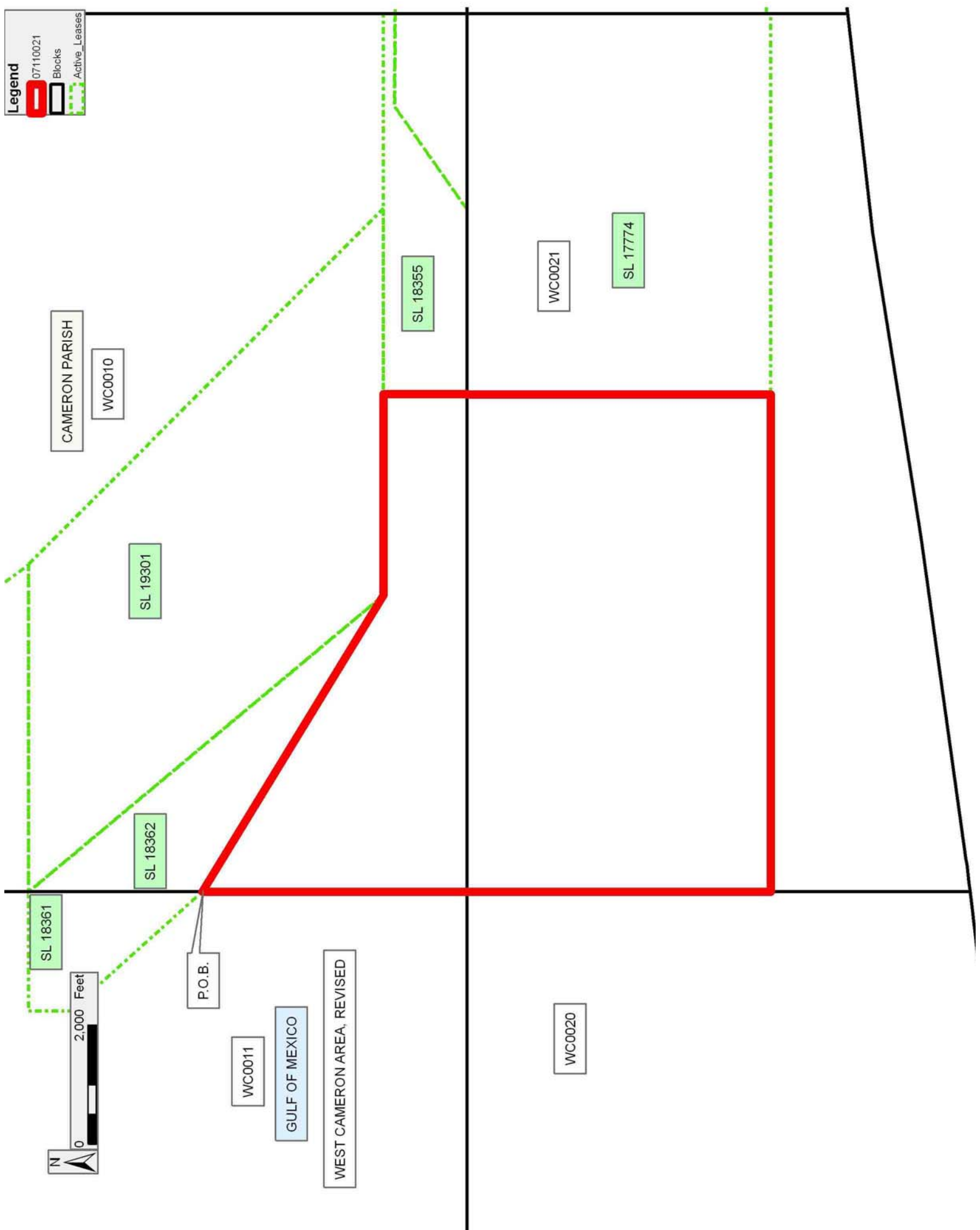
NOTE: The State of Louisiana does hereby reserve, and this lease shall be subject to, the imprescriptible right of surface use in the nature of a servitude in favor of the Department of Natural Resources, including its Offices and Commissions, for the sole purpose of implementing, constructing, servicing and maintaining approved coastal zone management and/or restoration projects. Utilization of any and all rights derived under this lease by the mineral lessee, its agents, successors or assigns, shall not interfere with nor hinder the reasonable surface use by the Department of Natural Resources, its Offices or Commissions, as herein above reserved.

Applicant: FRANZ P. SCHOEFFLER

Bidder	Cash Payment	Price/Acre	Rental	Oil	Gas	Other

Legend

- 07110021
- Blocks
- Active_Leases



TRACT 39452 - Portion of Block 20, West Cameron Area, Revised, Cameron Parish, Louisiana

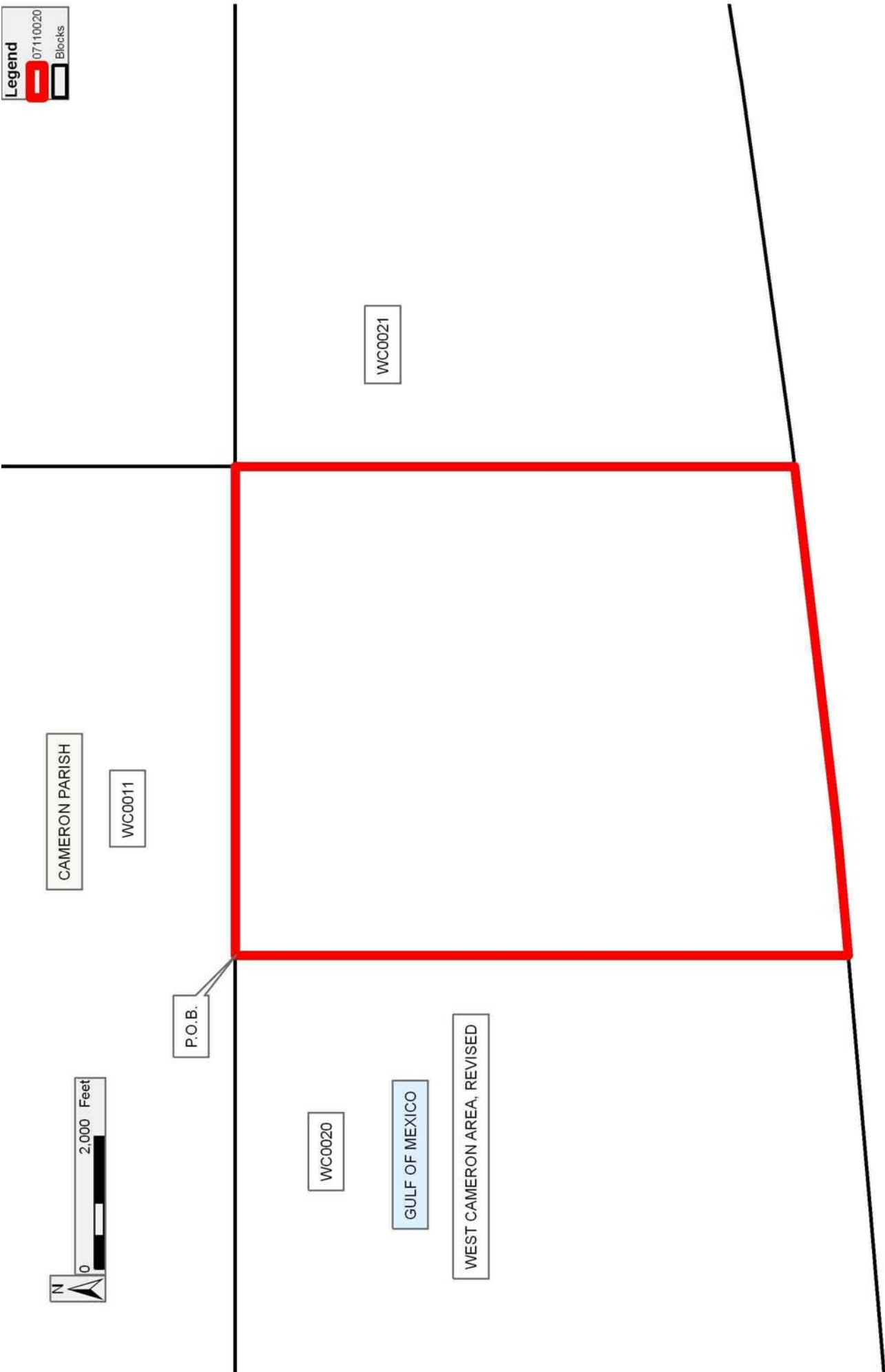
The beds and bottoms of all water bodies belonging to the State of Louisiana located in Block 20, West Cameron Area, Revised, together with any present lands formed by accretion to the shoreline or islands formed therein, located in Cameron Parish, Louisiana, owned by and not presently under mineral lease as of November 14, 2007, from the State of Louisiana, the geographical area of which is more fully described as follows: Beginning at a point on the North line of Block 20, West Cameron Area, Revised, having Coordinates of X = 1,280,760.00 and Y = 393,790.24; thence East 7,385.38 feet along the North line of said Block 20 to its Northeast corner having Coordinates X = 1,288,145.38 and Y = 393,790.24; thence South 8,455.17 feet along the East line of said Block 20 to a point on the Three Mile Line, as decreed by the Supreme Court of the United States, as determined by a Special Master appointed therein, in litigation styled *United States v. State of Louisiana et al No. 9 Original*, in 1975, having Coordinates of X = 1,288,145.38 and Y = 385,335.07; thence along said Three Mile Line the following courses: Southwesterly on a straight line to a point having Coordinates of X = 1,282,879 and Y = 384,719; Southwesterly along an arc to the right having a radius of 18,240.60 and a center at X = 1,280,760 and Y = 402,836 to a point having Coordinates of X = 1,282,343 and Y = 384,664 and Southwesterly on a straight line to a point having Coordinates of X = 1,280,760.00 and Y = 384,526.13; thence North 9,264.11 feet to the point of beginning, containing approximately **1,505.60 acres, LESS AND EXCEPT** that portion thereof, if any, lying seaward of the line three nautical miles from the coast line of Louisiana, as said three mile line has been decreed by the Supreme Court of the United States, as determined by a Special Master appointed therein, in litigation styled **United States v. State of Louisiana et al No. 9 Original**, in 1975, all as more particularly outlined on a plat in the Office of Mineral Resources, Department of Natural Resources. All bearings, distances and coordinates are based on the Louisiana Coordinate System of 1927, (South Zone).

NOTE: The above description of the Tract nominated for lease has been provided and corrected, where required, exclusively by the nomination party. Any mineral lease selected from this Tract and awarded by the Louisiana State Mineral Board shall be without warranty of any kind, either express, implied, or statutory, including, but not limited to, the implied warranties of merchantability and fitness for a particular purpose. Should the mineral lease awarded by the Louisiana State Mineral Board be subsequently modified, cancelled or abrogated due to the existence of conflicting leases, operating agreements, private claims or other future obligations or conditions which may affect all or any portion of the leased Tract, it shall not relieve the Lessee of the obligation to pay any bonus due thereon to the Louisiana State Mineral Board, nor shall the Louisiana State Mineral Board be obligated to refund any consideration paid by the Lessor prior to such modification, cancellation, or abrogation, including, but not limited to, bonuses, rentals and royalties.

NOTE: The State of Louisiana does hereby reserve, and this lease shall be subject to, the imprescriptible right of surface use in the nature of a servitude in favor of the Department of Natural Resources, including its Offices and Commissions, for the sole purpose of implementing, constructing, servicing and maintaining approved coastal zone management and/or restoration projects. Utilization of any and all rights derived under this lease by the mineral lessee, its agents, successors or assigns, shall not interfere with nor hinder the reasonable surface use by the Department of Natural Resources, its Offices or Commissions, as herein above reserved.

Applicant: FRANZ P. SCHOEFFLER

Bidder	Cash Payment	Price/Acre	Rental	Oil	Gas	Other



TRACT 39453 - Portion of Block 21, West Cameron Area, Revised, Cameron Parish, Louisiana

The beds and bottoms of all water bodies belonging to the State of Louisiana located in Block 21, West Cameron Area, Revised, together with any present lands formed by accretion to the shoreline or islands formed therein, located in Cameron Parish, Louisiana, owned by and not presently under mineral lease as of November 14, 2007, from the State of Louisiana, the geographical area of which is more fully described as follows: Beginning at a point on the West line of Block 21, West Cameron Area, Revised, having Coordinates of X = 1,288,145.38 and Y = 388,687.64; thence East 8,355.44 feet to the Southwest corner of State Lease No. 17774 having Coordinates X = 1,296,500.82 and Y = 388,687.64; thence East 6,402.60 feet along the South boundary of said State Lease No. 17774 to its Southeast corner, also being a point on the East line of said Block 21 having Coordinates of X = 1,302,903.42 and Y = 388,687.59; thence South 1,292.56 feet along the East line of said Block 21 to a point on the Three Mile Line, as decreed by the Supreme Court of the United States, as determined by a Special Master appointed therein, in litigation styled *United States v. State of Louisiana et al No. 9 Original*, in 1975, having Coordinates of X = 1,302,903.42 and Y = 387,395.08; thence along said Three Mile Line the following courses: Southwesterly on a straight line to a point having Coordinates of X = 1,299,212 and Y = 386,972; Southwesterly on a straight line to a point having Coordinates of X = 1,294,264 and Y = 386,189; Southwesterly along an arc to the right having a radius of 18,240.60 and a center at X = 1,291,413 and Y = 404,205 to a point having Coordinates of X = 1,293,948 and Y = 386,141; Southwesterly on a straight line to a point having Coordinates of X = 1,288,689 and Y = 385,403; Southwesterly along an arc to the right having a radius of 18,240.60 and a center at X = 1,286,154 and Y = 403,467 to a point having Coordinates of X = 1,288,273 and Y = 385,350 and Southwesterly on a straight line to a point on the West line of said Block 21 having Coordinates of X = 1,288,145.38 and Y = 385,335.07; thence North 3,352.57 feet along the West line of said Block 21 to the point of beginning, containing approximately **778.55 acres, LESS AND EXCEPT** that portion thereof, if any, lying seaward of the line three nautical miles from the coast line of Louisiana, as said three mile line has been decreed by the Supreme Court of the United States, as determined by a Special Master appointed therein, in litigation styled **United States v. State of Louisiana et al No. 9 Original**, in 1975, all as more particularly outlined on a plat in the Office of Mineral Resources, Department of Natural Resources. All bearings, distances and coordinates are based on the Louisiana Coordinate System of 1927, (South Zone).

NOTE: The above description of the Tract nominated for lease has been provided and corrected, where required, exclusively by the nomination party. Any mineral lease selected from this Tract and awarded by the Louisiana State Mineral Board shall be without warranty of any kind, either express, implied, or statutory, including, but not limited to, the implied warranties of merchantability and fitness for a particular purpose. Should the mineral lease awarded by the Louisiana State Mineral

Board be subsequently modified, cancelled or abrogated due to the existence of conflicting leases, operating agreements, private claims or other future obligations or conditions which may affect all or any portion of the leased Tract, it shall not relieve the Lessee of the obligation to pay any bonus due thereon to the Louisiana State Mineral Board, nor shall the Louisiana State Mineral Board be obligated to refund any consideration paid by the Lessor prior to such modification, cancellation, or abrogation, including, but not limited to, bonuses, rentals and royalties.

NOTE: The State of Louisiana does hereby reserve, and this lease shall be subject to, the imprescriptible right of surface use in the nature of a servitude in favor of the Department of Natural Resources, including its Offices and Commissions, for the sole purpose of implementing, constructing, servicing and maintaining approved coastal zone management and/or restoration projects. Utilization of any and all rights derived under this lease by the mineral lessee, its agents, successors or assigns, shall not interfere with nor hinder the reasonable surface use by the Department of Natural Resources, its Offices or Commissions, as herein above reserved.

Applicant: FRANZ P. SCHOEFFLER

Bidder	Cash Payment	Price/Acre	Rental	Oil	Gas	Other

Legend

- 07110022
- Blocks
- Active_Leases

