

TRACT 38729 - De Soto and Red River Parishes, Louisiana

All lands now or formerly constituting the beds and bottoms of water bodies of whatever description and nature owned by the State of Louisiana and located within the geographical boundaries of the the Bayou Pierre WMA and not presently under mineral lease by the State of Louisiana as of November 8, 2006, the area being set forth as follows: Beginning at the Northeast corner of State Lease No. 19027, and a point on the South line of State Lease No. 18764 having Coordinates of X = 1,661,630.00 and Y = 562,900.00; thence East 268.48 feet along the South line of said State Lease No. 18764 to a point having Coordinates of X = 1,661,898.48 and Y = 562,900.00; thence South 4,061.24 feet to a point having Coordinates of X = 1,661,898.48 and Y = 558,838.76; thence West 268.48 feet to a point of intersection with said State Lease No. 19027 having Coordinates of X = 1,661,630.00 and Y = 558,838.76; thence North 4,061.24 feet along the East line of said State Lease No. 19027 to the point of beginning, **LESS AND EXCEPT** all that portion of the above described tract lying outside the boundaries of the Bayou Pierre Wildlife Management Area, containing approximately **1 acre**, all as more particularly outlined on a plat on file in the Office of Mineral Resources, Department of Natural Resources. All bearings, distances and coordinates are based on Louisiana Coordinate System of 1927, (North or South Zone).

NOTE: The above description of the Tract nominated for lease has been provided and corrected, where required, exclusively by the nomination party. Any mineral lease selected from this Tract and awarded by the Louisiana State Mineral Board shall be without warranty of any kind, either express, implied, or statutory, including, but not limited to, the implied warranties of merchantability and fitness for a particular purpose. Should the mineral lease awarded by the Louisiana State Mineral Board be subsequently modified, cancelled or abrogated due to the existence of conflicting leases, operating agreements, private claims or other future obligations or conditions which may affect all or any portion of the leased Tract, it shall not relieve the Lessee of the obligation to pay any bonus due thereon to the Louisiana State Mineral Board, nor shall the Louisiana State Mineral Board be obligated to refund any consideration paid by the Lessor prior to such modification, cancellation, or abrogation, including, but not limited to, bonuses, rentals and royalties.

NOTE: This tract is located within the boundaries of a wildlife management area or refuge and any operations conducted thereon in conjunction with this mineral lease may be subject to rules and regulations promulgated by the Department of Wildlife and Fisheries for the protection of fish, birds and other wildlife including, but not necessarily limited to, the following:

1. No activities will be allowed without written authorization from the Louisiana Department of Wildlife and Fisheries.

2. Projects will be evaluated on a case by case basis. Modifications to projects may be required including, but not limited to, access routes, spoil placement, well sites, flow lines and other appurtenant structures.

3. Compensatory mitigation will be required to offset unavoidable wetland impacts.

4. Removal of all structures, facilities, and equipment will be required within 120 days of abandonment unless otherwise agreed to by the Department of Wildlife and Fisheries.

5. No activities will be allowed during the hunting season unless approved by the Department.

6. Compliance with the said WMA regulations will be required unless otherwise specified by the Department.

7. Prior to submitting applications for wetland permits to Federal and State permitting agencies the lease holder shall coordinate project details with the Louisiana Department of Wildlife and Fisheries, Fur and Refuge Division. Contact person for the Department will be Mike Windham at (504) 568-5886 or (225) 765-2807.

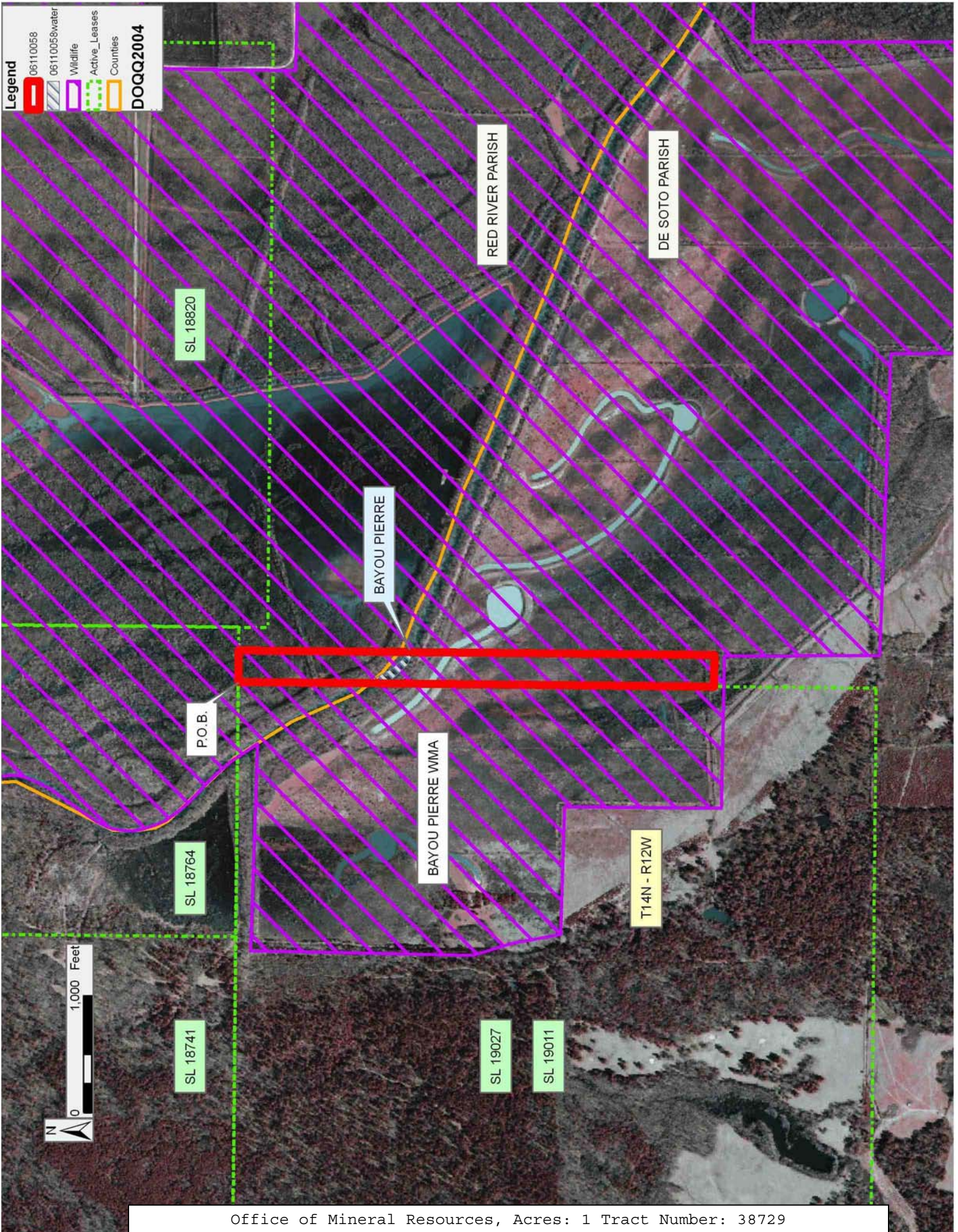
Applicant: DAY EXPLORATION

| Bidder | Cash Payment | Price/Acre | Rental | Oil | Gas | Other |
|--------|--------------|------------|--------|-----|-----|-------|
| | | | | | | |
| | | | | | | |
| | | | | | | |
| | | | | | | |

Legend

-  06110058
-  06110058:water
-  Wildlife
-  Active_Leases
-  Counties

DOQQ2004



TRACT 38730 - De Soto and Red River Parishes, LOUISIANA

All land, LESS AND EXCEPT land now or formerly constituting the beds and bottoms of any water body of whatever description and nature, all belonging to the State of Louisiana located within the geographical boundaries of the Bayou Pierre WMA and not presently under mineral lease by the State of Louisiana as of November 8, 2006, the area of which is set forth as follows: Beginning at the Northeast corner of State Lease No. 19027, and a point on the South line of State Lease No. 18764 having Coordinates of X = 1,661,630.00 and Y = 562,900.00; thence East 268.48 feet along the South line of said State Lease No. 18764 to a point having Coordinates of X = 1,661,898.48 and Y = 562,900.00; thence South 4,061.24 feet to a point having Coordinates of X = 1,661,898.48 and Y = 558,838.76; thence West 268.48 feet to a point of intersection with said State Lease No. 19027 having Coordinates of X = 1,661,630.00 and Y = 558,838.76; thence North 4,061.24 feet along the East line of said State Lease No. 19027 to the Point of Beginning, **LESS AND EXCEPT** that part of the above described tract lying South of Bayou Pierre; **ALSO LESS AND EXCEPT** all that portion of the above described tract lying outside the boundaries of the Bayou Pierre Wildlife Management Area, containing approximately **8 acres**, all as more particularly outlined on a plat on file in the Office of Mineral Resources, Department of Natural Resources. All bearings, distances and coordinates are based on Louisiana Coordinate System of 1927, (North or South Zone).

NOTE: The above description of the Tract nominated for lease has been provided and corrected, where required, exclusively by the nomination party. Any mineral lease selected from this Tract and awarded by the Louisiana State Mineral Board shall be without warranty of any kind, either express, implied, or statutory, including, but not limited to, the implied warranties of merchantability and fitness for a particular purpose. Should the mineral lease awarded by the Louisiana State Mineral Board be subsequently modified, cancelled or abrogated due to the existence of conflicting leases, operating agreements, private claims or other future obligations or conditions which may affect all or any portion of the leased Tract, it shall not relieve the Lessee of the obligation to pay any bonus due thereon to the Louisiana State Mineral Board, nor shall the Louisiana State Mineral Board be obligated to refund any consideration paid by the Lessor prior to such modification, cancellation, or abrogation, including, but not limited to, bonuses, rentals and royalties.

NOTE: This tract is located within the boundaries of a wildlife management area or refuge and any operations conducted thereon in conjunction with this mineral lease may be subject to rules and regulations promulgated by the Department of Wildlife and Fisheries for the protection of fish, birds and other wildlife including, but not necessarily limited to, the following:

1. No activities will be allowed without written authorization from the Louisiana Department of Wildlife and Fisheries.

2. Projects will be evaluated on a case by case basis. Modifications to projects may be required including, but not limited to, access routes, spoil placement, well sites, flow lines and other appurtenant structures.

3. Compensatory mitigation will be required to offset unavoidable wetland impacts.

4. Removal of all structures, facilities, and equipment will be required within 120 days of abandonment unless otherwise agreed to by the Department of Wildlife and Fisheries.

5. No activities will be allowed during the hunting season unless approved by the Department.

6. Compliance with the said WMA regulations will be required unless otherwise specified by the Department.

7. Prior to submitting applications for wetland permits to Federal and State permitting agencies the lease holder shall coordinate project details with the Louisiana Department of Wildlife and Fisheries, Fur and Refuge Division. Contact person for the Department will be Mike Windham at (504) 568-5886 or (225) 765-2807.

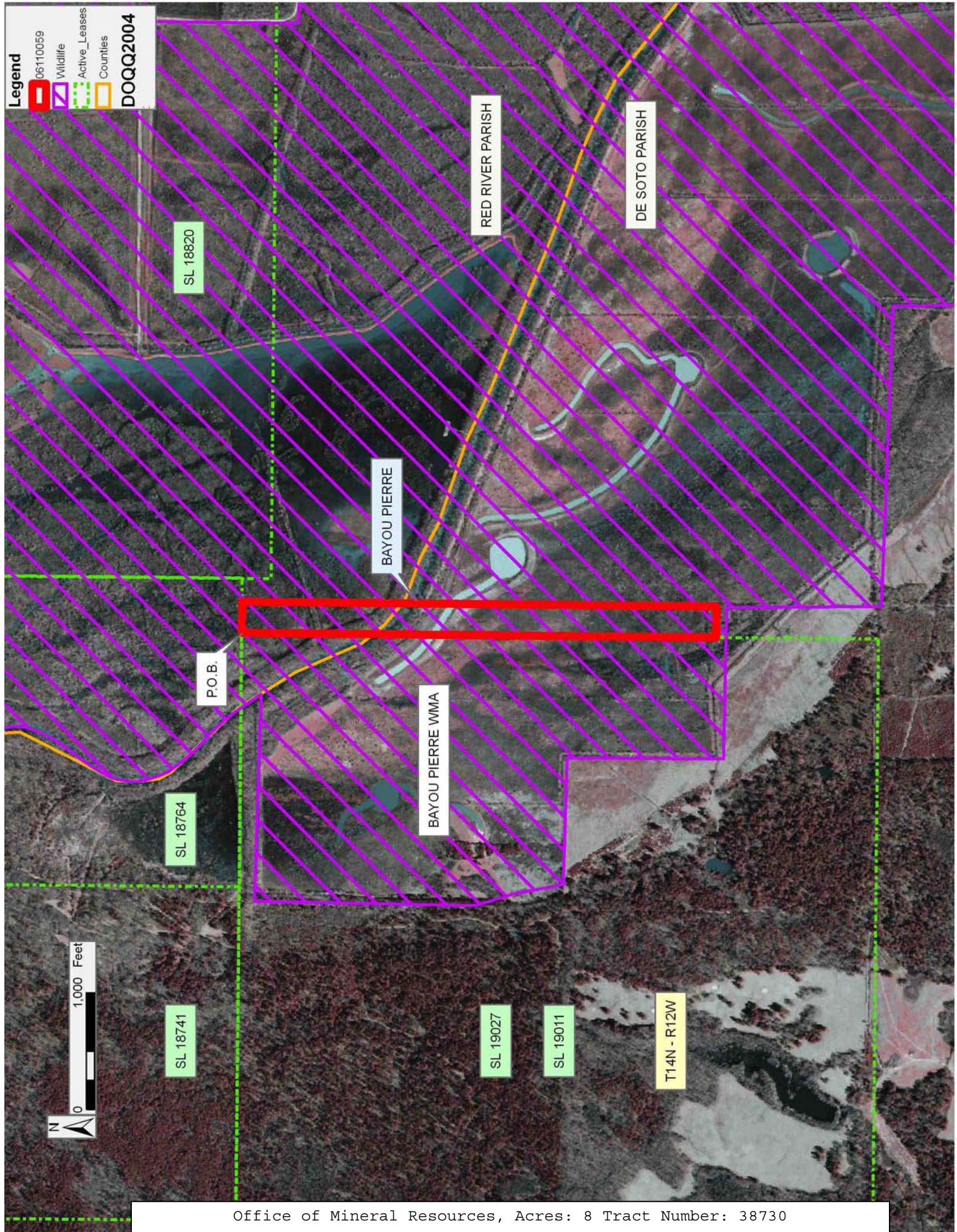
Applicant: DAY EXPLORATION

| Bidder | Cash Payment | Price/Acre | Rental | Oil | Gas | Other |
|--------|--------------|------------|--------|-----|-----|-------|
| | | | | | | |
| | | | | | | |
| | | | | | | |
| | | | | | | |

Legend

-  06110059
-  Wildlife
-  Active_Leases
-  Counties

DOQQ2004



TRACT 38731 - De Soto and Red River Parishes, LOUISIANA

All land, LESS AND EXCEPT land now or formerly constituting the beds and bottoms of any water body of whatever description and nature, all belonging to the State of Louisiana located within the geographical boundaries of the Bayou Pierre WMA and not presently under mineral lease by the State of Louisiana as of November 8, 2006, the area of which is set forth as follows: Beginning at the Northeast corner of State Lease No. 19027, and a point on the South line of State Lease No. 18764 having Coordinates of X = 1,661,630.00 and Y = 562,900.00; thence East 268.48 feet along the South line of said State Lease No. 18764 to a point having Coordinates of X = 1,661,898.48 and Y = 562,900.00; thence South 4,061.24 feet to a point having Coordinates of X = 1,661,898.48 and Y = 558,838.76; thence West 268.48 feet to a point of intersection with said State Lease No. 19027 having Coordinates of X = 1,661,630.00 and Y = 558,838.76; thence North 4,061.24 feet along the East line of said State Lease No. 19027 to the Point of Beginning, **LESS AND EXCEPT** that part of the above described tract lying North of Bayou Pierre; **ALSO LESS AND EXCEPT** all that portion of the above described tract lying outside the boundaries of the Bayou Pierre Wildlife Management Area, containing approximately 16 gross acres and **8 net acres**, all as more particularly outlined on a plat on file in the Office of Mineral Resources, Department of Natural Resources. All bearings, distances and coordinates are based on Louisiana Coordinate System of 1927, (North or South Zone).

NOTE: The above description of the Tract nominated for lease has been provided and corrected, where required, exclusively by the nomination party. Any mineral lease selected from this Tract and awarded by the Louisiana State Mineral Board shall be without warranty of any kind, either express, implied, or statutory, including, but not limited to, the implied warranties of merchantability and fitness for a particular purpose. Should the mineral lease awarded by the Louisiana State Mineral Board be subsequently modified, cancelled or abrogated due to the existence of conflicting leases, operating agreements, private claims or other future obligations or conditions which may affect all or any portion of the leased Tract, it shall not relieve the Lessee of the obligation to pay any bonus due thereon to the Louisiana State Mineral Board, nor shall the Louisiana State Mineral Board be obligated to refund any consideration paid by the Lessor prior to such modification, cancellation, or abrogation, including, but not limited to, bonuses, rentals and royalties.

NOTE: This tract is located within the boundaries of a wildlife management area or refuge and any operations conducted thereon in conjunction with this mineral lease may be subject to rules and regulations promulgated by the Department of Wildlife and Fisheries for the protection of fish, birds and other wildlife including, but not necessarily limited to, the following:

1. No activities will be allowed without written authorization from the Louisiana Department of Wildlife and Fisheries.

2. Projects will be evaluated on a case by case basis. Modifications to projects may be required including, but not limited to, access routes, spoil placement, well sites, flow lines and other appurtenant structures.

3. Compensatory mitigation will be required to offset unavoidable wetland impacts.

4. Removal of all structures, facilities, and equipment will be required within 120 days of abandonment unless otherwise agreed to by the Department of Wildlife and Fisheries.

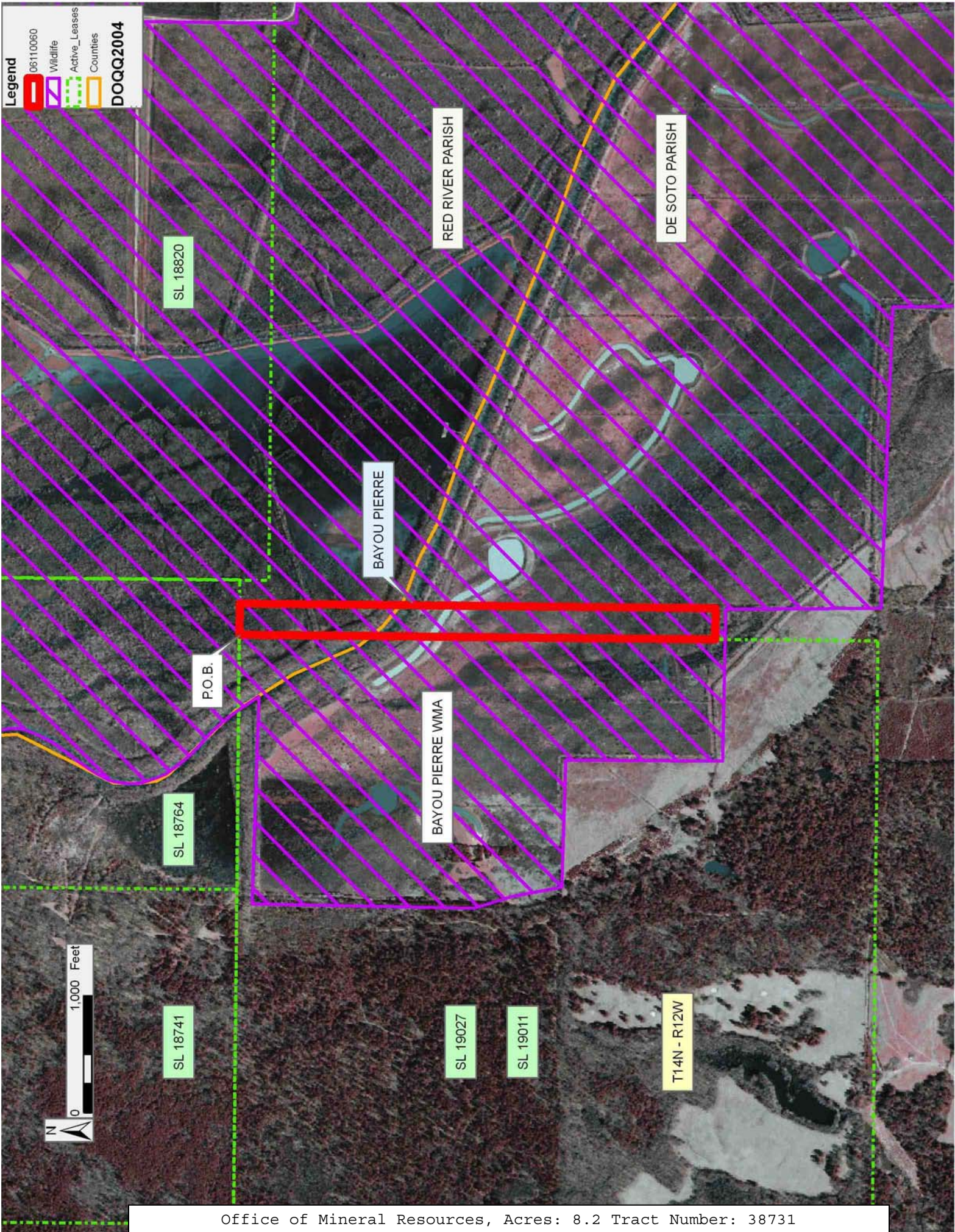
5. No activities will be allowed during the hunting season unless approved by the Department.

6. Compliance with the said WMA regulations will be required unless otherwise specified by the Department.

7. Prior to submitting applications for wetland permits to Federal and State permitting agencies the lease holder shall coordinate project details with the Louisiana Department of Wildlife and Fisheries, Fur and Refuge Division. Contact person for the Department will be Mike Windham at (504) 568-5886 or (225) 765-2807.

Applicant: DAY EXPLORATION

| Bidder | Cash Payment | Price/Acre | Rental | Oil | Gas | Other |
|--------|--------------|------------|--------|-----|-----|-------|
| | | | | | | |
| | | | | | | |
| | | | | | | |
| | | | | | | |



Legend

- 0611.0060
- Wildlife
- Active_Leases
- Counties

DOQQ2004

RED RIVER PARISH

DE SOTO PARISH

SL 18820

BAYOU PIERRE

P.O.B.

BAYOU PIERRE WMA

SL 18764

SL 18741

SL 19027

SL 19011

T14N - R12W