

**TRACT 38705 - Plaquemines Parish, Louisiana**

All of the lands now or formerly constituting the beds and bottoms of all water bodies of every nature and description the title of which vests in the State of Louisiana, together with all islands arising therein and other lands formed by accretion or by reliction, where allowed by law, excepting tax adjudicated lands, and not presently under mineral lease and cross hatched on November 8, 2006, situated in Plaquemines Parish, Louisiana, and more particularly described as follows: Beginning at the Westernmost Southwest corner of State Lease No. 17236 having Coordinates of X = 2,633,512.29 and Y = 257,698.81; thence along the Southern boundary of said State Lease No. 17236 the following: North 87 degrees 51 minutes 33 seconds East 910.78 feet, South 02 degrees 08 minutes 27 seconds East 320.00 feet, North 87 degrees 51 minutes 33 seconds East 1,320.00 feet, North 02 degrees 08 minutes 27 seconds West 320 feet and North 87 degrees 51 minutes 33 seconds East 1,320.00 feet to the Southwest corner of State Lease No. 18581, having Coordinates of X = 2,637,060.59 and Y = 257,831.45; thence South 02 degrees 08 minutes 27 seconds East 620.00 feet to a point having Coordinates of X = 2,637,083.75 and Y = 257,211.89; thence South 87 degrees 51 minutes 33 seconds West 1,320.00 feet to a point having Coordinates of X = 2,635,764.67 and Y = 257,162.58; thence South 02 degrees 08 minutes 27 seconds East 303.08 feet to a point on the North boundary of Operating Agreement AO261, having Coordinates of X = 2,635,775.99 and Y = 256,859.71; thence South 87 degrees 51 minutes 33 seconds West 2,603.07 feet along the North boundary of said Operating Agreement to its Northernmost Northwest corner having Coordinates of X = 2,633,174.74 and Y = 256,762.47; thence North 19 degrees 49 minutes 27 seconds East 995.33 feet to the point of beginning, **LESS AND EXCEPT** any portion of State Lease No. 195 that may lie within the above described tract, containing approximately 60 gross acres and **24 net acres**, all as more particularly outlined on a plat on file in the Office of Mineral Resources, Department of Natural Resources. All bearings, distances and coordinates are based on Louisiana Coordinate System of 1927, (North or South Zone), where applicable.

NOTE: The above description of the Tract nominated for lease has been provided and corrected, where required, exclusively by the nomination party. Any mineral lease selected from this Tract and awarded by the Louisiana State Mineral Board shall be without warranty of any kind, either express, implied, or statutory, including, but not limited to, the implied warranties of merchantability and fitness for a particular purpose. Should the mineral lease awarded by the Louisiana State Mineral Board be subsequently modified, cancelled or abrogated due to the existence of conflicting leases, operating agreements, private claims or other future obligations or conditions which may affect all or any portion of the leased Tract, it shall not relieve the Lessee of the obligation to pay any bonus due thereon to the Louisiana State Mineral Board, nor shall the Louisiana State Mineral Board be obligated to refund any consideration paid by the Lessor prior to such modification, cancellation, or abrogation, including, but not limited to, bonuses, rentals and royalties.

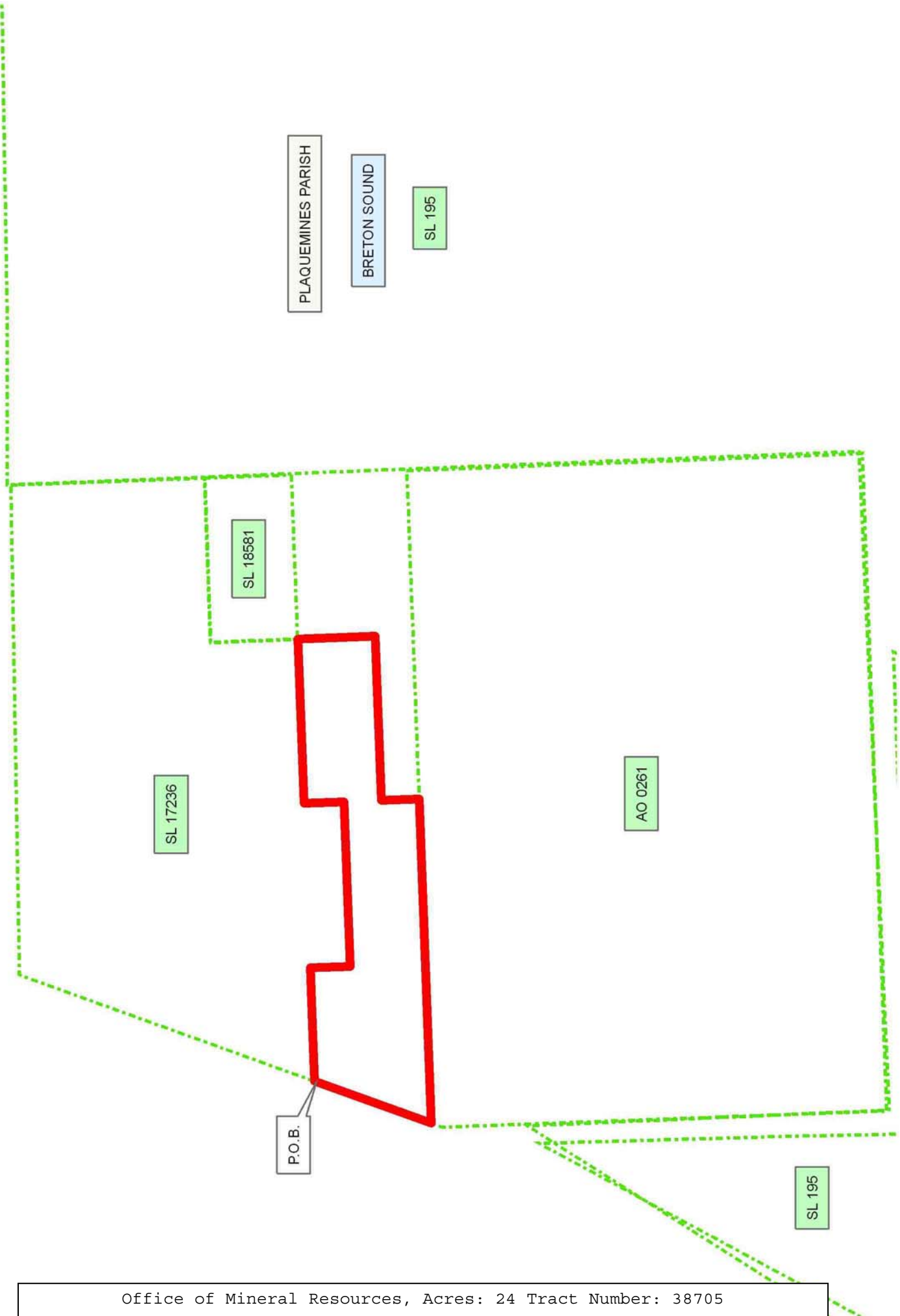
NOTE: The State of Louisiana does hereby reserve, and this lease shall be subject to, the imprescriptible right of surface use in the nature of a servitude in favor of the Department of Natural Resources, including its Offices and Commissions, for the sole purpose of implementing, constructing, servicing and maintaining approved coastal zone management and/or restoration projects. Utilization of any and all rights derived under this lease by the mineral lessee, its agents, successors or assigns, shall not interfere with nor hinder the reasonable surface use by the Department of Natural Resources, its Offices or Commissions, as herein above reserved.

NOTE: The Department of Wildlife and Fisheries has designated certain areas in the coastal waters of the State of Louisiana as Oyster Seed Bed Areas. The exact location of those Seed Bed Areas must be obtained from the Department of Wildlife and Fisheries and any work done under a mineral lease from the State of Louisiana may necessarily be conducted in conformity with the rules and regulations promulgated by the said Department of Wildlife and Fisheries for Oyster Seed Bed Areas.

Applicant: LOUISIANA MINERALS MANAGEMENT

Bidder	Cash Payment	Price/Acre	Rental	Oil	Gas	Other

**Legend**  
06110068  
Active\_Leases



**TRACT 38706 - Plaquemines Parish, Louisiana**

All of the lands now or formerly constituting the beds and bottoms of all water bodies of every nature and description the title of which vests in the State of Louisiana, together with all islands arising therein and other lands formed by accretion or by reliction, where allowed by law, excepting tax adjudicated lands, and not presently under mineral lease and cross hatched on November 8, 2006, situated in Plaquemines Parish, Louisiana, and more particularly described as follows: Beginning at the Southeast corner of State Lease No. 18581, having Coordinates of X = 2,638,379.68 and Y = 257,880.76; thence South 02 degrees 08 minutes 27 seconds East 923.07 feet to the Northeast corner of Operating Agreement AO261 having Coordinates of X = 2,638,414.15 and Y = 256,958.33; thence South 87 degrees 51 minutes 33 seconds West 2,640.00 feet along North boundary of said Operating Agreement AO261 to a point having Coordinates of X = 2,635,775.99 and Y = 256,859.71; thence North 02 degrees 08 minutes 27 seconds West 303.08 feet to a point having Coordinates of X = 2,635,764.67 and Y = 257,162.58; thence North 87 degrees 51 minutes 33 seconds East 1,320.00 feet to a point having Coordinates of X = 2,637,083.75 and Y = 257,211.89; thence North 02 degrees 08 minutes 27 seconds West 620.00 feet to the Southwest corner of said State Lease No. 18581, also being a Southeast Corner of State Lease No. 17236, having Coordinates 2,637,060.59 and Y = 257,831.45; thence North 87 degrees 51 minutes 33 seconds East 1,320.00 feet along the South boundary of said State Lease No. 18581 to the point of beginning, **LESS AND EXCEPT** any portions of State Lease No. 195 that may lie within the above described tract, containing approximately **37 acres**, all as more particularly outlined on a plat on file in the Office of Mineral Resources, Department of Natural Resources. All bearings, distances and coordinates are based on Louisiana Coordinate System of 1927, (North or South Zone), where applicable.

NOTE: The above description of the Tract nominated for lease has been provided and corrected, where required, exclusively by the nomination party. Any mineral lease selected from this Tract and awarded by the Louisiana State Mineral Board shall be without warranty of any kind, either express, implied, or statutory, including, but not limited to, the implied warranties of merchantability and fitness for a particular purpose. Should the mineral lease awarded by the Louisiana State Mineral Board be subsequently modified, cancelled or abrogated due to the existence of conflicting leases, operating agreements, private claims or other future obligations or conditions which may affect all or any portion of the leased Tract, it shall not relieve the Lessee of the obligation to pay any bonus due thereon to the Louisiana State Mineral Board, nor shall the Louisiana State Mineral Board be obligated to refund any consideration paid by the Lessor prior to such modification, cancellation, or abrogation, including, but not limited to, bonuses, rentals and royalties.

NOTE: The State of Louisiana does hereby reserve, and this lease shall be subject to, the imprescriptible right of surface use in the nature of a

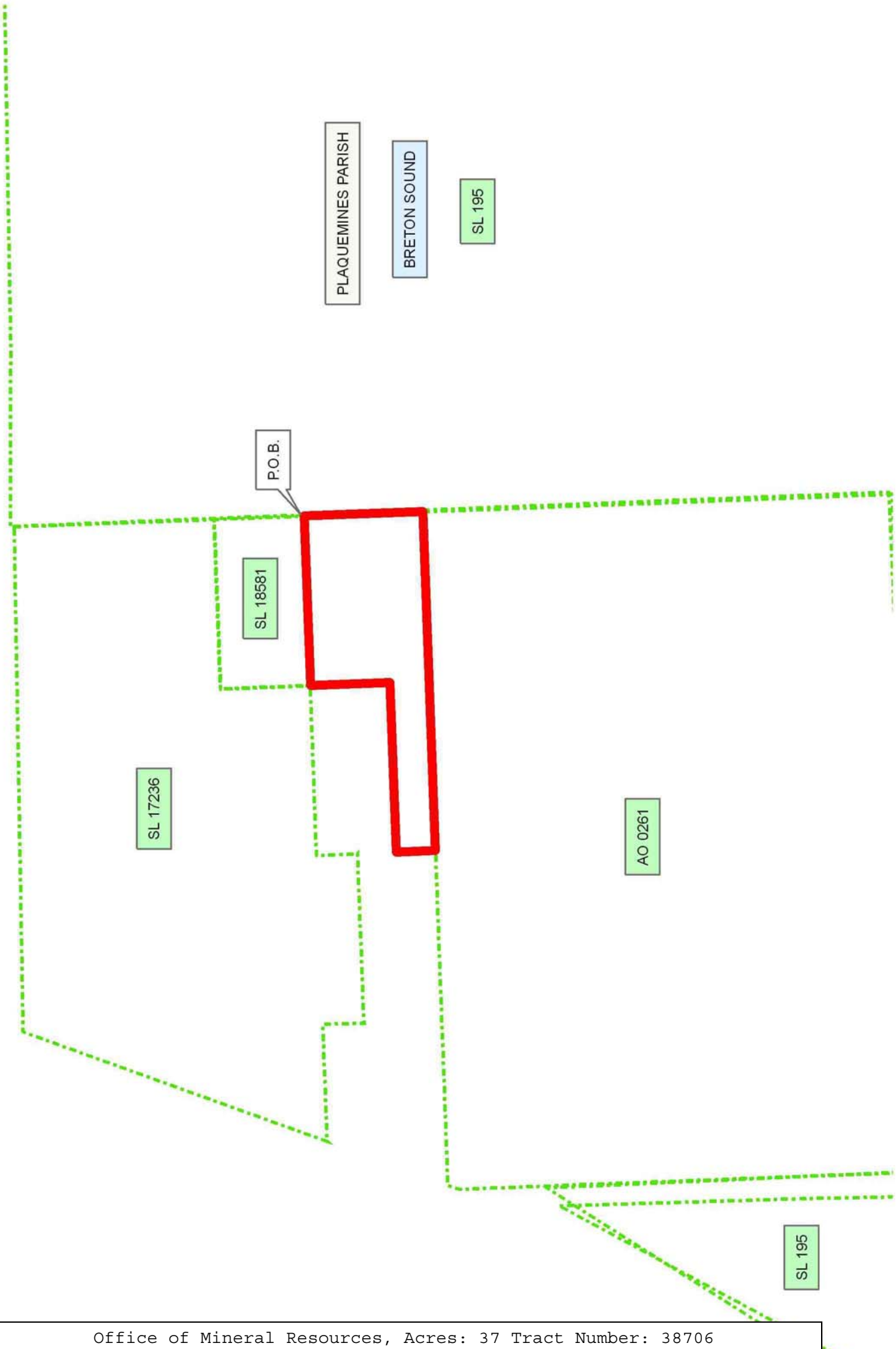
servitude in favor of the Department of Natural Resources, including its Offices and Commissions, for the sole purpose of implementing, constructing, servicing and maintaining approved coastal zone management and/or restoration projects. Utilization of any and all rights derived under this lease by the mineral lessee, its agents, successors or assigns, shall not interfere with nor hinder the reasonable surface use by the Department of Natural Resources, its Offices or Commissions, as herein above reserved.

NOTE: The Department of Wildlife and Fisheries has designated certain areas in the coastal waters of the State of Louisiana as Oyster Seed Bed Areas. The exact location of those Seed Bed Areas must be obtained from the Department of Wildlife and Fisheries and any work done under a mineral lease from the State of Louisiana may necessarily be conducted in conformity with the rules and regulations promulgated by the said Department of Wildlife and Fisheries for Oyster Seed Bed Areas.

Applicant: LOUISIANA MINERALS MANAGEMENT

Bidder	Cash Payment	Price/Acre	Rental	Oil	Gas	Other

**Legend**  
06110069  
Active\_Leases



**TRACT 38707 - Plaquemines Parish, Louisiana**

All of the lands now or formerly constituting the beds and bottoms of all water bodies of every nature and description the title of which vests in the State of Louisiana, together with all islands arising therein and other lands formed by accretion or by reliction, where allowed by law, excepting tax adjudicated lands, and not presently under mineral lease and cross hatched on November 8, 2006, situated in Plaquemines Parish, Louisiana, and more particularly described as follows: Beginning at the Northernmost Northwest corner of Operating Agreement No. A0261, having Coordinates of X = 2,633,174.74 and Y = 256,762.47; thence North 87 degrees 51 minutes 33 seconds East 2,603.07 feet along the North boundary of said Operating Agreement to a point having Coordinates of X = 2,635,775.99 and Y = 256,859.71; thence South 02 degrees 08 minutes 27 seconds East 1,016.92 feet to a point having Coordinates of X = 2,635,813.98 and Y = 255,843.50; thence South 87 degrees 51 minutes 33 seconds West 1,320.00 feet to a point having Coordinates of X = 2,634,494.90 and Y = 255,794.19; thence South 02 degrees 08 minutes 27 seconds East 1,320.00 feet to a point having Coordinates of X = 2,634,544.21 and Y = 254,475.11; thence South 87 degrees 51 minutes 33 seconds West 1,319.91 feet to a point located on the West boundary of said Operating Agreement, having Coordinates of X = 2,633,225.23 and Y = 254,425.80; thence North 02 degrees 08 minutes 27 seconds West 2,245.08 feet along the West boundary of said Operating Agreement to its most South Northwest corner having Coordinates of X = 2,633,141.36 and Y = 256,669.32; thence North 19 degrees 42 minutes 55 seconds East 98.95 feet along the Northwestern boundary of said Operating Agreement to the point of beginning, **LESS AND EXCEPT** any portion of State Lease No. 195 that may lie within the above described tract, **ALSO LESS AND EXCEPT** any portion of Operating Agreement A0261 from the surface to 100 feet below the stratigraphic equivalent of the 11,000' sd. as seen on the electric log for State Lease No. 2792 Well #9 at 10,982-11,010 feet, that may lie within the above described tract, containing approximately 102 gross acres and **40.8 net acres**, all as more particularly outlined on a plat on file in the Office of Mineral Resources, Department of Natural Resources. All bearings, distances and coordinates are based on Louisiana Coordinate System of 1927, (North or South Zone), where applicable.

NOTE: The above description of the Tract nominated for lease has been provided and corrected, where required, exclusively by the nomination party. Any mineral lease selected from this Tract and awarded by the Louisiana State Mineral Board shall be without warranty of any kind, either express, implied, or statutory, including, but not limited to, the implied warranties of merchantability and fitness for a particular purpose. Should the mineral lease awarded by the Louisiana State Mineral Board be subsequently modified, cancelled or abrogated due to the existence of conflicting leases, operating agreements, private claims or other future obligations or conditions which may affect all or any portion of the leased Tract, it shall not relieve the Lessee of the obligation to pay any bonus due thereon to the Louisiana State Mineral Board, nor shall

the Louisiana State Mineral Board be obligated to refund any consideration paid by the Lessor prior to such modification, cancellation, or abrogation, including, but not limited to, bonuses, rentals and royalties.

NOTE: The State of Louisiana does hereby reserve, and this lease shall be subject to, the imprescriptible right of surface use in the nature of a servitude in favor of the Department of Natural Resources, including its Offices and Commissions, for the sole purpose of implementing, constructing, servicing and maintaining approved coastal zone management and/or restoration projects. Utilization of any and all rights derived under this lease by the mineral lessee, its agents, successors or assigns, shall not interfere with nor hinder the reasonable surface use by the Department of Natural Resources, its Offices or Commissions, as herein above reserved.

NOTE: The Department of Wildlife and Fisheries has designated certain areas in the coastal waters of the State of Louisiana as Oyster Seed Bed Areas. The exact location of those Seed Bed Areas must be obtained from the Department of Wildlife and Fisheries and any work done under a mineral lease from the State of Louisiana may necessarily be conducted in conformity with the rules and regulations promulgated by the said Department of Wildlife and Fisheries for Oyster Seed Bed Areas.

Applicant: LOUISIANA MINERALS MANAGEMENT

Bidder	Cash Payment	Price/Acre	Rental	Oil	Gas	Other



**Legend**  
06110066  
Active\_Leases



PLAQUEMINES PARISH

BRETON SOUND

SL 195

SL 18581

SL 17236

AO 0261

P.O.B.

SL 195

**TRACT 38708 - Plaquemines Parish, Louisiana**

All of the lands now or formerly constituting the beds and bottoms of all water bodies of every nature and description the title of which vests in the State of Louisiana, together with all islands arising therein and other lands formed by accretion or by reliction, where allowed by law, excepting tax adjudicated lands, and not presently under mineral lease and cross hatched on November 8, 2006, situated in Plaquemines Parish, Louisiana, and more particularly described as follows: Beginning at a point on the North boundary of Operating Agreement No. A0261, having Coordinates of X = 2,635,775.99 and Y = 256,859.71; thence along the boundary of said Operating Agreement the following: North 87 degrees 51 minutes 33 seconds East 2,640.00 feet to a point having Coordinates of X = 2,638,414.15 and Y = 256,958.33, South 02 degrees 08 minutes 27 seconds East 3,656.95 feet to a point having Coordinates of X = 2,638,550.76 and Y = 253,303.93, South 87 degrees 51 minutes 33 seconds West 5,279.91 feet to a point having Coordinates of X = 2,633,274.54 and Y = 253,106.70 and North 02 degrees 08 minutes 27 seconds West 1,320.03 feet to a point having Coordinates of X = 2,633,225.23 and Y = 254,425.80; thence North 87 degrees 51 minutes 33 seconds East 1,319.91 feet to a point having Coordinates of X = 2,634,544.21 and Y = 254,475.11; thence North 02 degrees 08 minutes 27 seconds West 1,320.00 feet to a point having Coordinates of X = 2,634,494.90 and Y = 255,794.19; thence North 87 degrees 51 minutes 33 seconds East 1,320.00 feet to a point having Coordinates of X = 2,635,813.98 and Y = 255,843.50; thence North 02 degrees 08 minutes 27 seconds West 1,016.92 feet to the point of beginning, **LESS AND EXCEPT** any portion of State Lease No. 195 that may lie within the above described tract, **ALSO LESS AND EXCEPT** any portion of Operating Agreement A0261 from the surface to 100 feet below the stratigraphic equivalent of the 11,000' sd. as seen on the electric log for State Lease No. 2792 Well #9 at 10,982-11,010 feet, that may lie within the above described tract, containing approximately **342 acres**, all as more particularly outlined on a plat on file in the Office of Mineral Resources, Department of Natural Resources. All bearings, distances and coordinates are based on Louisiana Coordinate System of 1927, (North or South Zone), where applicable.

NOTE: The above description of the Tract nominated for lease has been provided and corrected, where required, exclusively by the nomination party. Any mineral lease selected from this Tract and awarded by the Louisiana State Mineral Board shall be without warranty of any kind, either express, implied, or statutory, including, but not limited to, the implied warranties of merchantability and fitness for a particular purpose. Should the mineral lease awarded by the Louisiana State Mineral Board be subsequently modified, cancelled or abrogated due to the existence of conflicting leases, operating agreements, private claims or other future obligations or conditions which may affect all or any portion of the leased Tract, it shall not relieve the Lessee of the obligation to pay any bonus due thereon to the Louisiana State Mineral Board, nor shall the Louisiana State Mineral Board be obligated to refund any consideration

paid by the Lessor prior to such modification, cancellation, or abrogation, including, but not limited to, bonuses, rentals and royalties.

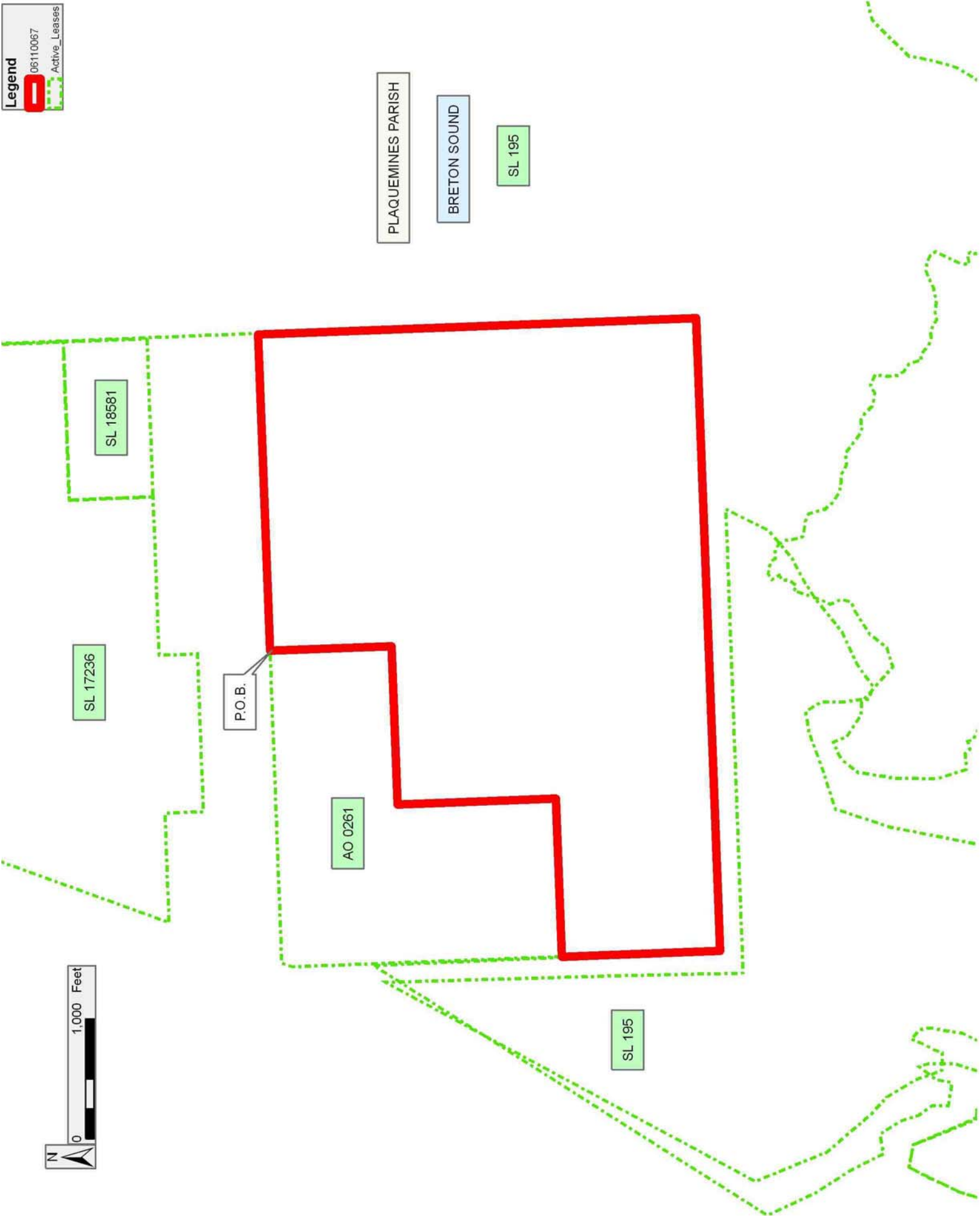
NOTE: The State of Louisiana does hereby reserve, and this lease shall be subject to, the imprescriptible right of surface use in the nature of a servitude in favor of the Department of Natural Resources, including its Offices and Commissions, for the sole purpose of implementing, constructing, servicing and maintaining approved coastal zone management and/or restoration projects. Utilization of any and all rights derived under this lease by the mineral lessee, its agents, successors or assigns, shall not interfere with nor hinder the reasonable surface use by the Department of Natural Resources, its Offices or Commissions, as herein above reserved.

NOTE: The Department of Wildlife and Fisheries has designated certain areas in the coastal waters of the State of Louisiana as Oyster Seed Bed Areas. The exact location of those Seed Bed Areas must be obtained from the Department of Wildlife and Fisheries and any work done under a mineral lease from the State of Louisiana may necessarily be conducted in conformity with the rules and regulations promulgated by the said Department of Wildlife and Fisheries for Oyster Seed Bed Areas.

Applicant: LOUISIANA MINERALS MANAGEMENT

Bidder	Cash Payment	Price/Acre	Rental	Oil	Gas	Other

**Legend**  
06110067  
Active\_Leases



**TRACT 38709 - Portion of Blocks 75, and 76, Main Pass Area, Revised, Blocks 1, and 2, South Pass Area, Plaquemines Parish, Louisiana**

All of the lands now or formerly constituting the beds and bottoms of all water bodies of every nature and description the title of which vests in the State of Louisiana, together with all islands arising therein and other lands formed by accretion or by reliction, where allowed by law, excepting tax adjudicated lands, and not presently under mineral lease and cross hatched on November 8, 2006, situated in Plaquemines Parish, Louisiana, and more particularly described as follows: Beginning at a point in Block 75 Main Pass Area on the Shoreline having Coordinates of X = 2,755,325.00 and Y = 204,680.00; thence along said Shoreline the following: Southwesterly on a straight line to a point having Coordinates of X = 2,755,178.00 and Y = 203,815.00, Southwesterly on a straight line through South line of said Block 75 into Block 76 Main Pass Area to a point having Coordinates of X = 2,754,635.20 and Y = 195,305.43; thence West 7,138.94 feet through the West line of said Block 76 into Block 2 South Pass Area to a point on the East boundary of Pass A Loutre Wildlife Management Area having Coordinates of X = 2,747,496.26 and Y = 195,305.43; thence thence along the boundary of said Wildlife Management Area an arc having a Radius of 21,825 and center at X = 2,725,759.55 and Y = 193,344.35 to a point in Block 1 South Pass Area having Coordinates of X = 2,740,368.92 and Y = 209,558.45, being an intersection with said Shoreline; thence Southeasterly on a straight line along said Shoreline out of said Block 1, through said Block 2 and into said Block 75 to a point having Coordinates of X = 2,750,755.00 and Y = 206,535.00 and Southeasterly along said Shoreline on a straight line to the Point of Beginning, containing approximately **2,499.48 acres**, all as more particularly outlined on a plat on file in the Office of Mineral Resources, Department of Natural Resources. All bearings, distances and coordinates are based on Louisiana Coordinate System of 1927, (North or South Zone), where applicable.

NOTE: The above description of the Tract nominated for lease has been provided and corrected, where required, exclusively by the nomination party. Any mineral lease selected from this Tract and awarded by the Louisiana State Mineral Board shall be without warranty of any kind, either express, implied, or statutory, including, but not limited to, the implied warranties of merchantability and fitness for a particular purpose. Should the mineral lease awarded by the Louisiana State Mineral Board be subsequently modified, cancelled or abrogated due to the existence of conflicting leases, operating agreements, private claims or other future obligations or conditions which may affect all or any portion of the leased Tract, it shall not relieve the Lessee of the obligation to pay any bonus due thereon to the Louisiana State Mineral Board, nor shall the Louisiana State Mineral Board be obligated to refund any consideration paid by the Lessor prior to such modification, cancellation, or abrogation, including, but not limited to, bonuses, rentals and royalties.

NOTE: The State of Louisiana does hereby reserve, and this lease shall be subject to, the imprescriptible right of surface use in the nature of a servitude in favor of the Department of Natural Resources, including its Offices and Commissions, for the sole purpose of implementing, constructing, servicing and maintaining approved coastal zone management and/or restoration projects. Utilization of any and all rights derived under this lease by the mineral lessee, its agents, successors or assigns, shall not interfere with nor hinder the reasonable surface use by the Department of Natural Resources, its Offices or Commissions, as herein above reserved.

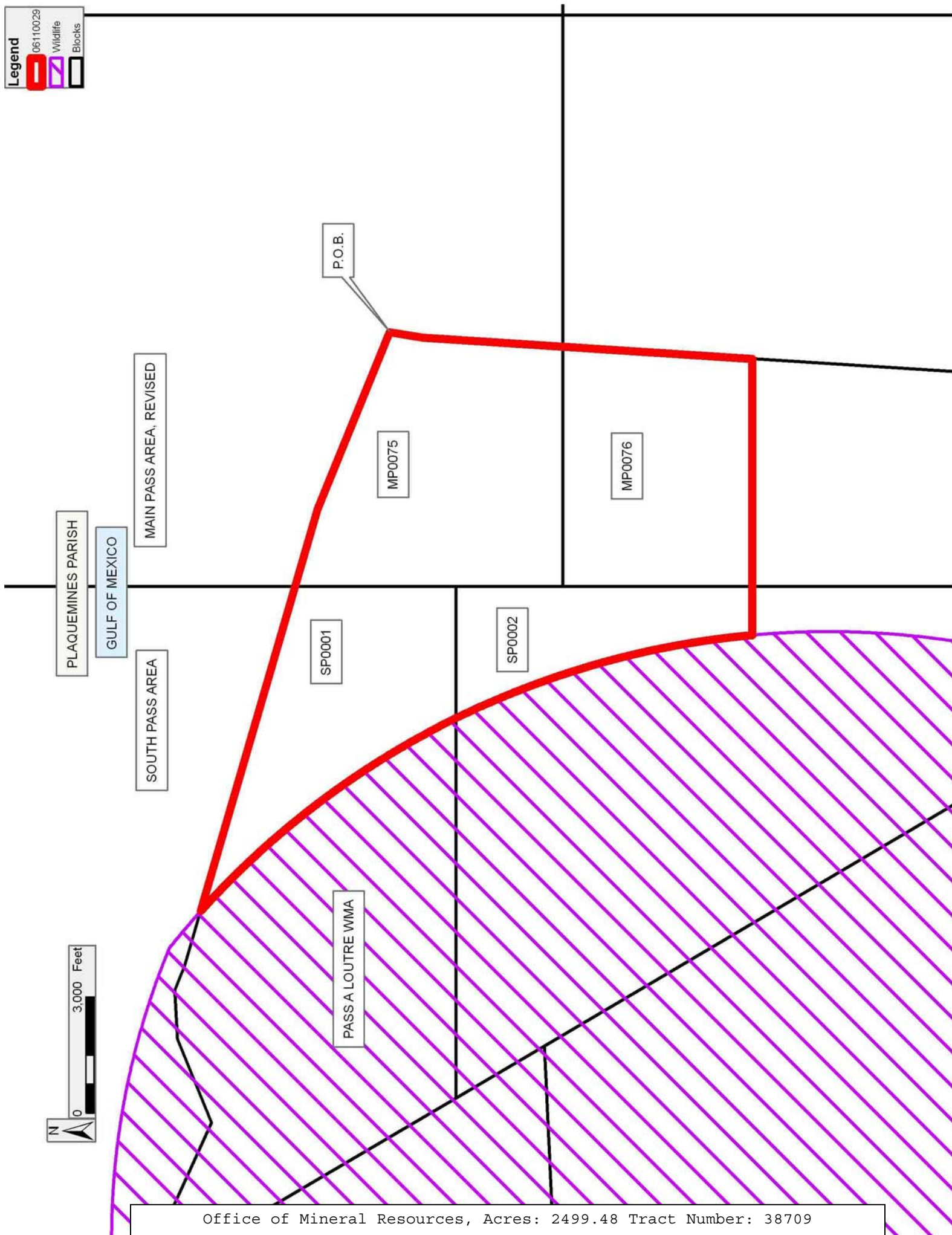
NOTE: The Department of Wildlife and Fisheries has designated certain areas in the coastal waters of the State of Louisiana as Oyster Seed Bed Areas. The exact location of those Seed Bed Areas must be obtained from the Department of Wildlife and Fisheries and any work done under a mineral lease from the State of Louisiana may necessarily be conducted in conformity with the rules and regulations promulgated by the said Department of Wildlife and Fisheries for Oyster Seed Bed Areas.

Applicant: BARKER COMPANIES

Bidder	Cash Payment	Price/Acre	Rental	Oil	Gas	Other

**Legend**

- 06110029
- Wildlife
- Blocks



Office of Mineral Resources, Acres: 2499.48 Tract Number: 38709