

TRACT 38695 - Portion of Block 46, Breton Sound Area, Plaquemines Parish, Louisiana

All of the lands now or formerly constituting the beds and bottoms of all water bodies of every nature and description the title of which vests in the State of Louisiana, together with all islands arising therein and other lands formed by accretion or by reliction, where allowed by law, excepting tax adjudicated lands, and not presently under mineral lease and cross hatched on November 8, 2006, situated in Plaquemines Parish, Louisiana, and more particularly described as follows: Beginning at a point on the West line of Block 46, Breton Sound Area, having Coordinates of X = 2,664,850.00 and Y = 300,205.00; thence East 11,716.65 feet to a point on the boundary of State Lease No. 17689 having Coordinates of X = 2,676,566.65 and Y = 300,205.00; thence South 33 degrees 14 minutes 29 seconds West 965.84 feet along the boundary of said State Lease No. 17689 to the Northernmost corner of State Lease No. 19079 having Coordinates of X = 2,676,037.21 and Y = 299,397.20; thence along the boundary of said State Lease No. 19079 the following courses: South 23 degrees 05 minutes 31 seconds West 2,899.52 feet and South 52 degrees 01 minutes 23 seconds East 3,944.14 feet to a point on the Louisiana Coastline, also being a point on the boundary of State Lease No. 19050 having Coordinates of X = 2,678,009.00 and Y = 294,303.00; thence Southeasterly on a straight line along said Louisiana Coastline to a point on the South line of said Block 46 having Coordinates of X = 2,678,166.42 and Y = 292,830.00; thence West 13,316.42 feet to the Southwest corner of said Block 46 having Coordinates of X = 2,664,850.00 and Y = 292,830.00; thence North 7,375.00 feet along the West line of said Block 46, to the point of beginning, containing approximately **1,956.75 acres**, all as more particularly outlined on a plat on file in the Office of Mineral Resources, Department of Natural Resources. All bearings, distances and coordinates are based on Louisiana Coordinate System of 1927, (North or South Zone), where applicable.

NOTE: The above description of the Tract nominated for lease has been provided and corrected, where required, exclusively by the nomination party. Any mineral lease selected from this Tract and awarded by the Louisiana State Mineral Board shall be without warranty of any kind, either express, implied, or statutory, including, but not limited to, the implied warranties of merchantability and fitness for a particular purpose. Should the mineral lease awarded by the Louisiana State Mineral Board be subsequently modified, cancelled or abrogated due to the existence of conflicting leases, operating agreements, private claims or other future obligations or conditions which may affect all or any portion of the leased Tract, it shall not relieve the Lessee of the obligation to pay any bonus due thereon to the Louisiana State Mineral Board, nor shall the Louisiana State Mineral Board be obligated to refund any consideration paid by the Lessor prior to such modification, cancellation, or abrogation, including, but not limited to, bonuses, rentals and royalties.

NOTE: The State of Louisiana does hereby reserve, and this lease shall be subject to, the imprescriptible right of surface use in the nature of a

servitude in favor of the Department of Natural Resources, including its Offices and Commissions, for the sole purpose of implementing, constructing, servicing and maintaining approved coastal zone management and/or restoration projects. Utilization of any and all rights derived under this lease by the mineral lessee, its agents, successors or assigns, shall not interfere with nor hinder the reasonable surface use by the Department of Natural Resources, its Offices or Commissions, as herein above reserved.

Applicant: HAROLD J. ANDERSON, INC.

Bidder	Cash Payment	Price/Acre	Rental	Oil	Gas	Other

Legend

- 06110039
- Active_Leases
- Tracts
- Blocks

BS00045

BS00052

SL 19050

SL 17689

SL 19079

PLAQUEMINES PARISH

BRETON SOUND AREA

BS00046

GULF OF MEXICO

BS00051



BS00047

P.O.B.

BS00050

TR 38571

SL 16569

SL 19081

TRACT 38696 - Jefferson and Lafourche Parishes, Louisiana

All of the lands now or formerly constituting the beds and bottoms of all water bodies of every nature and description the title of which vests in the State of Louisiana, together with all islands arising therein and other lands formed by accretion or by reliction, where allowed by law, excepting tax adjudicated lands, and not presently under mineral lease and cross hatched on November 8, 2006, situated in Jefferson and Lafourche Parishes, Louisiana, and more particularly described as follows: Beginning at a point having Coordinates of X = 2,403,862.54 and Y = 300,508.07; thence East 9,137.08 feet to Southwest corner of State Lease No. 4190 having Coordinates of X = 2,412,999.62 and Y = 300,508.07; thence East 1,950.00 feet along the South boundary of said State Lease No. 4190 to its Southeast corner, also being a point on the West boundary of State Lease No. 4192 having Coordinates of X = 2,414,949.62 and Y = 300,508.07; thence South 200.00 feet along the West boundary of said State Lease No. 4192 to its Southwest corner having Coordinates of X = 2,414,949.62 and Y = 300,308.07; thence South 9,494.24 feet to a point having Coordinates of X = 2,414,949.62 and Y = 290,813.83; thence West 11,087.08 feet to a point having Coordinates of X = 2,403,862.54 and Y = 290,813.83; thence North 9,694.24 feet to the Point of Beginning, containing approximately **1,332.00 acres**, all as more particularly outlined on a plat on file in the Office of Mineral Resources, Department of Natural Resources. All bearings, distances and coordinates are based on Louisiana Coordinate System of 1927, (North or South Zone), where applicable.

NOTE: The above description of the Tract nominated for lease has been provided and corrected, where required, exclusively by the nomination party. Any mineral lease selected from this Tract and awarded by the Louisiana State Mineral Board shall be without warranty of any kind, either express, implied, or statutory, including, but not limited to, the implied warranties of merchantability and fitness for a particular purpose. Should the mineral lease awarded by the Louisiana State Mineral Board be subsequently modified, cancelled or abrogated due to the existence of conflicting leases, operating agreements, private claims or other future obligations or conditions which may affect all or any portion of the leased Tract, it shall not relieve the Lessee of the obligation to pay any bonus due thereon to the Louisiana State Mineral Board, nor shall the Louisiana State Mineral Board be obligated to refund any consideration paid by the Lessor prior to such modification, cancellation, or abrogation, including, but not limited to, bonuses, rentals and royalties.

NOTE: The State of Louisiana does hereby reserve, and this lease shall be subject to, the imprescriptible right of surface use in the nature of a servitude in favor of the Department of Natural Resources, including its Offices and Commissions, for the sole purpose of implementing, constructing, servicing and maintaining approved coastal zone management and/or restoration projects. Utilization of any and all rights derived under this lease by the mineral lessee, its agents, successors or assigns, shall not interfere with nor hinder the reasonable surface use by the

Department of Natural Resources, its Offices or Commissions, as herein above reserved.

NOTE: The Department of Wildlife and Fisheries has designated certain areas in the coastal waters of the State of Louisiana as Oyster Seed Bed Areas. The exact location of those Seed Bed Areas must be obtained from the Department of Wildlife and Fisheries and any work done under a mineral lease from the State of Louisiana may necessarily be conducted in conformity with the rules and regulations promulgated by the said Department of Wildlife and Fisheries for Oyster Seed Bed Areas.

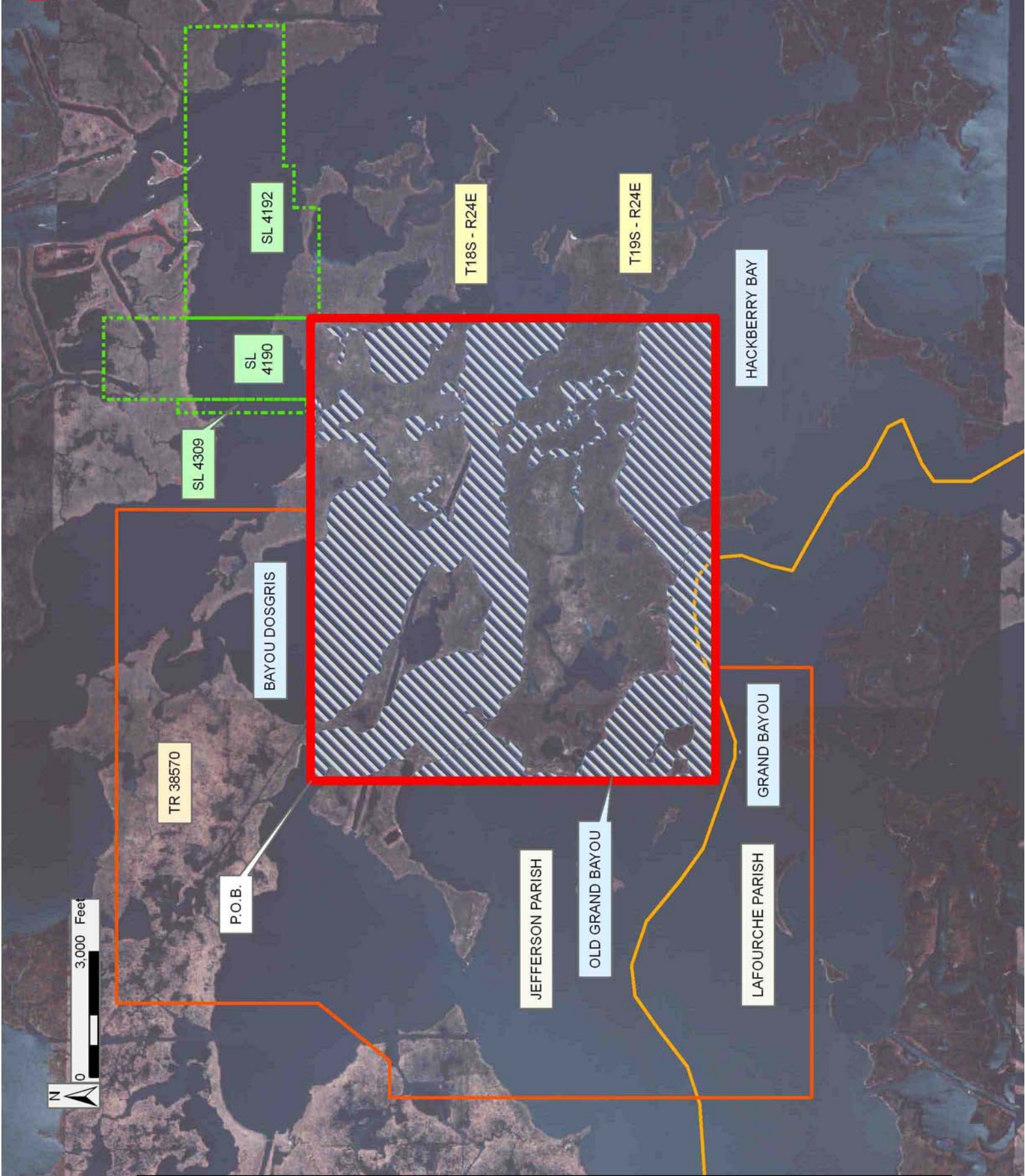
Applicant: LESLIE M. COOPER

Bidder	Cash Payment	Price/Acre	Rental	Oil	Gas	Other

Legend

-  06110015
-  06110015water
-  Tracts
-  Active_Leases
-  Counties

DOQQ2004



TRACT 38697 - Portion of Block 50, Breton Sound Area, Plaquemines Parish, Louisiana

All of the lands now or formerly constituting the beds and bottoms of all water bodies of every nature and description the title of which vests in the State of Louisiana, together with all islands arising therein and other lands formed by accretion or by reliction, where allowed by law, excepting tax adjudicated lands, and not presently under mineral lease and cross hatched on November 8, 2006, situated in Plaquemines Parish, Louisiana, and more particularly described as follows: Beginning at the Northwest corner of Block 50, Breton Sound Area, having Coordinates of X = 2,650,100.00 and Y = 292,830.00; thence East 7,375.00 feet along the North line of said Block 50, to a point having Coordinates of X = 2,657,475.00 and Y = 292,830.00; thence South 00 degrees 02 minutes 29 seconds East 12,636.62 feet to a point on the boundary of State Lease No. 18578 having Coordinates of X = 2,657,484.13 and Y = 280,193.38; thence South 27 degrees 27 minutes 07 seconds West 429.78 feet along the boundary of said State Lease No. 18578 to a point on its Westerly most Southwest corner having Coordinates of X = 2,657,286.00 and Y = 279,812.00; thence South 00 degrees 14 minutes 51 seconds West 1,732.02 feet to a point on the South line of said Block 50, having Coordinates of X = 2,657,278.52 and Y = 278,080.00; thence West 2,928.52 feet along the South line of said Block 50, to the Southeast corner of State Lease No. 16393 having Coordinates of X = 2,654,350.00 and Y = 278,080.00; thence along the boundary of said State Lease No. 16393 the following courses: North 2,000.00 feet, West 3,800.00 feet and South 2,000.00 feet to a point on the South line of said Block 50 having Coordinates of X = 2,650,550.00 and Y = 278,080.00; thence West 450.00 feet along said South line of Block 50, to its Southwest corner having Coordinates of X = 2,650,100.00 and Y = 278,080.00; thence North 14,750.00 feet along the West line of Block 50 to the point of beginning, containing approximately **2,315.68 acres**, all as more particularly outlined on a plat on file in the Office of Mineral Resources, Department of Natural Resources. All bearings, distances and coordinates are based on Louisiana Coordinate System of 1927, (North or South Zone), where applicable.

NOTE: The above description of the Tract nominated for lease has been provided and corrected, where required, exclusively by the nomination party. Any mineral lease selected from this Tract and awarded by the Louisiana State Mineral Board shall be without warranty of any kind, either express, implied, or statutory, including, but not limited to, the implied warranties of merchantability and fitness for a particular purpose. Should the mineral lease awarded by the Louisiana State Mineral Board be subsequently modified, cancelled or abrogated due to the existence of conflicting leases, operating agreements, private claims or other future obligations or conditions which may affect all or any portion of the leased Tract, it shall not relieve the Lessee of the obligation to pay any bonus due thereon to the Louisiana State Mineral Board, nor shall the Louisiana State Mineral Board be obligated to refund any consideration




paid by the Lessor prior to such modification, cancellation, or abrogation, including, but not limited to, bonuses, rentals and royalties.

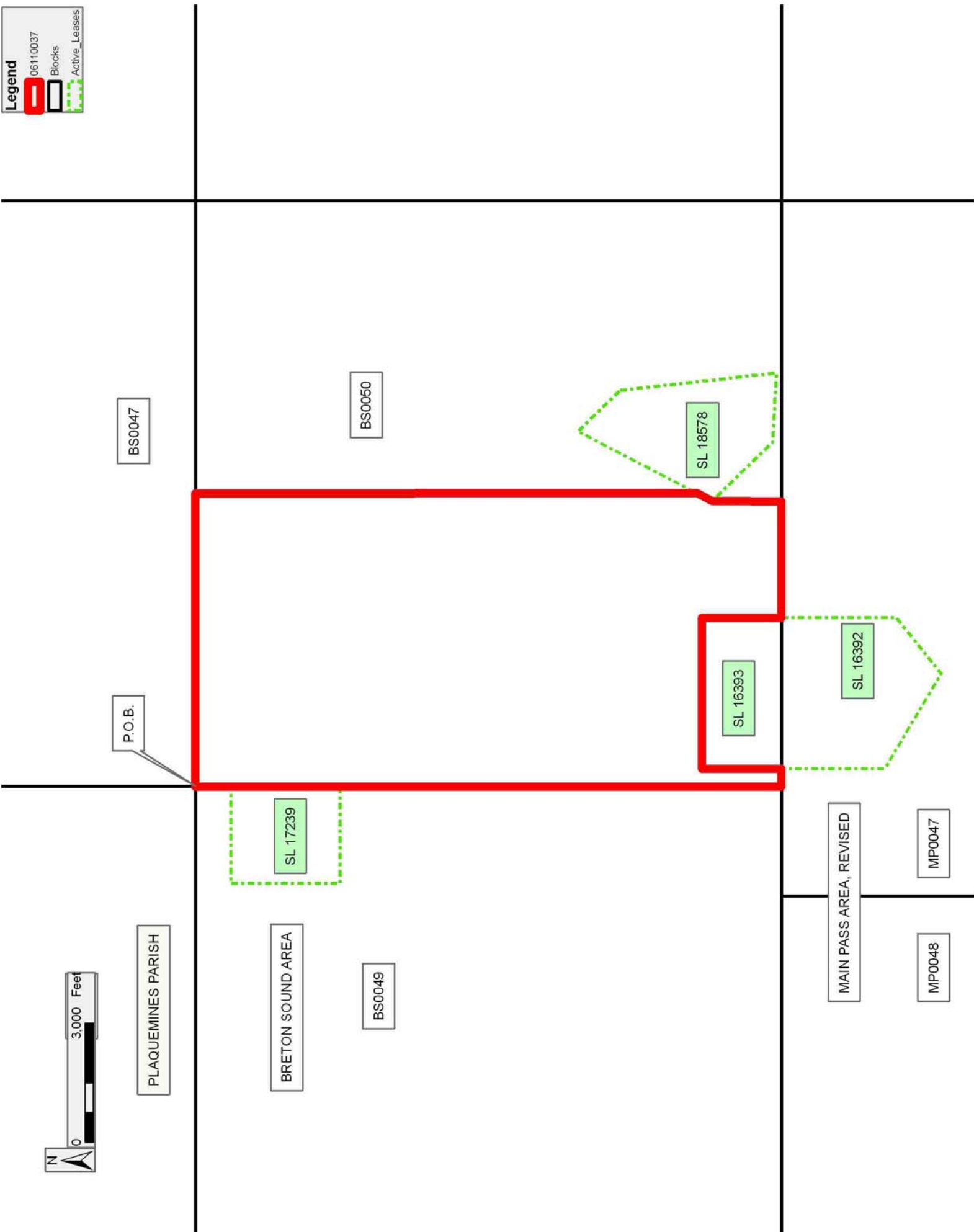
NOTE: The State of Louisiana does hereby reserve, and this lease shall be subject to, the imprescriptible right of surface use in the nature of a servitude in favor of the Department of Natural Resources, including its Offices and Commissions, for the sole purpose of implementing, constructing, servicing and maintaining approved coastal zone management and/or restoration projects. Utilization of any and all rights derived under this lease by the mineral lessee, its agents, successors or assigns, shall not interfere with nor hinder the reasonable surface use by the Department of Natural Resources, its Offices or Commissions, as herein above reserved.

Applicant: HAROLD J. ANDERSON, INC.

Bidder	Cash Payment	Price/Acre	Rental	Oil	Gas	Other

Legend

-  06110037
-  Blocks
-  Active_Leases



P.O.B.

PLAQUEMINES PARISH

BRETON SOUND AREA

MAIN PASS AREA, REVISED

TRACT 38698 - Portion of Blocks 50, and 51, Breton Sound Area, Plaquemines Parish, Louisiana

All of the lands now or formerly constituting the beds and bottoms of all water bodies of every nature and description the title of which vests in the State of Louisiana, together with all islands arising therein and other lands formed by accretion or by reliction, where allowed by law, excepting tax adjudicated lands, and not presently under mineral lease and cross hatched on November 8, 2006, situated in Plaquemines Parish, Louisiana, and more particularly described as follows: Beginning at the Northwest corner of Block 51, Breton Sound Area, having Coordinates of X = 2,664,850.00 and Y = 292,830.00; thence East 1,500.00 feet along the North line of said Block 51, to the Northwest corner of State Lease No. 19081, having Coordinates of X = 2,666,350.00 and Y = 292,830.00; thence along the boundary of said State Lease No. 19081 the following courses: South 19 degrees 39 minutes 14 seconds East 2,973.21 feet, East 1,700.00 feet and North 10 degrees 07 minutes 29 seconds West 2,844.29 feet to its Northeast corner having Coordinates of X = 2,668,550.00 and Y = 292,830.00; thence East 3,675.00 feet along the North line of said Block 51, to a point having Coordinates of X = 2,672,225.00 and Y = 292,830.00; thence South 4,894.65 feet to a point on the boundary of State Lease No. 16890 having Coordinates of X = 2,672,225.00 and Y = 287,935.35; thence along the boundary of said State Lease No. 16890 the following courses: South 73 degrees 14 minutes 30 seconds West 1,717.96 feet, South 05 degrees 15 minutes 21 seconds East 3,384.23 feet and South 87 degrees 28 minutes 59 seconds East 1,336.29 feet to a point on the South boundary having Coordinates of X = 2,672,225.00 and Y = 284,011.32; thence South 5,931.32 feet to a point on the South line of said Block 51, having Coordinates of X = 2,672,225.00 and Y = 278,080.00; thence West 7,375.00 feet along the South line of said Block 51, to its Southwest corner having Coordinates of X = 2,664,850.00 and Y = 278,080.00; thence West 7,571.48 feet to a point on the South line of Block 50, Breton Sound Area, having Coordinates of X = 2,657,278.52 and Y = 278,080.00; thence North 00 degrees 14 minutes 51 seconds East 1,732.02 feet to the Westernmost corner of State Lease No. 18578 having Coordinates of X = 2,657,286.00 and Y = 279,812.00; thence along the boundary of said State Lease No. 18578, the following courses: South 44 degrees 27 minutes 52 seconds East 2,118.58 feet, South 86 degrees 47 minutes 28 seconds East 1,750.74 feet and North 06 degrees 26 minutes 10 seconds West 1,397.55 feet to a point having Coordinates of X = 2,660,361.34 and Y = 279,590.74; thence East 4,488.66 feet to a point on the East line of said Block 50, having Coordinates of X = 2,664,850.00 and Y = 279,590.74; thence East 2,745.17 feet to a point within Block 51, having Coordinates of X = 2,667,595.17 and Y = 279,590.74; thence North 5,864.26 feet to a point having Coordinates of X = 2,667,595.17 and Y = 285,455.00; thence West 2,745.17 feet to a point on the West line of said Block 51, having Coordinates of X = 2,664,850.00 and Y = 285,455.00; thence North 7,375.00 feet along the West line of said Block 51, to the point of beginning, **LESS AND EXCEPT** that portion, if any, of State Lease No. 17245, as amended, more fully described as follows: Beginning at a point having Coordinates of X = 2,667,817.00 and Y = 283,087.39; thence

East 3,425.00 feet to a point having Coordinates of X = 2,671,242.00 and Y = 283,087.39; thence South 1,785.39 feet to a point having Coordinates of X = 2,671,242.00 and Y = 281,302.00; thence West 3,425.00 feet to a point having Coordinates of X = 2,667,817.00 and Y = 281,302.00; thence North 1,785.39 feet to the point of beginning, containing approximately **1,929.46 acres**, all as more particularly outlined on a plat on file in the Office of Mineral Resources, Department of Natural Resources. All bearings, distances and coordinates are based on Louisiana Coordinate System of 1927, (North or South Zone), where applicable.

NOTE: The above description of the Tract nominated for lease has been provided and corrected, where required, exclusively by the nomination party. Any mineral lease selected from this Tract and awarded by the Louisiana State Mineral Board shall be without warranty of any kind, either express, implied, or statutory, including, but not limited to, the implied warranties of merchantability and fitness for a particular purpose. Should the mineral lease awarded by the Louisiana State Mineral Board be subsequently modified, cancelled or abrogated due to the existence of conflicting leases, operating agreements, private claims or other future obligations or conditions which may affect all or any portion of the leased Tract, it shall not relieve the Lessee of the obligation to pay any bonus due thereon to the Louisiana State Mineral Board, nor shall the Louisiana State Mineral Board be obligated to refund any consideration paid by the Lessor prior to such modification, cancellation, or abrogation, including, but not limited to, bonuses, rentals and royalties.

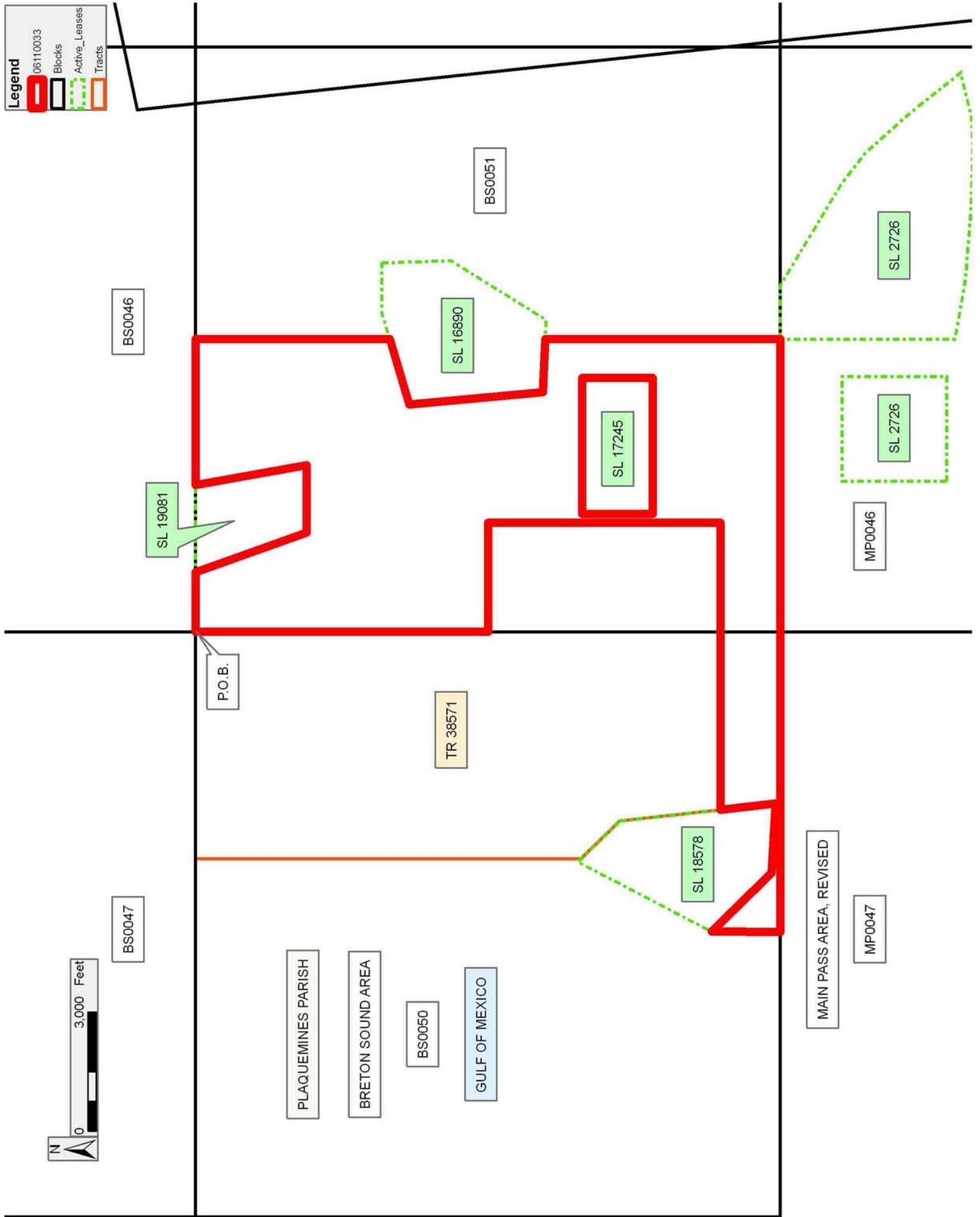
NOTE: The State of Louisiana does hereby reserve, and this lease shall be subject to, the imprescriptible right of surface use in the nature of a servitude in favor of the Department of Natural Resources, including its Offices and Commissions, for the sole purpose of implementing, constructing, servicing and maintaining approved coastal zone management and/or restoration projects. Utilization of any and all rights derived under this lease by the mineral lessee, its agents, successors or assigns, shall not interfere with nor hinder the reasonable surface use by the Department of Natural Resources, its Offices or Commissions, as herein above reserved.

Bidder	Cash Payment	Price/Acre	Rental	Oil	Gas	Other

Applicant: HAROLD J. ANDERSON, INC.

Legend

- 06110033
- Blocks
- Active_Leases
- Tracts



TRACT 38699 - Portion of Block 50, Breton Sound Area, Plaquemines Parish, Louisiana

All of the lands now or formerly constituting the beds and bottoms of all water bodies of every nature and description the title of which vests in the State of Louisiana, together with all islands arising therein and other lands formed by accretion or by reliction, where allowed by law, excepting tax adjudicated lands, and not presently under mineral lease and cross hatched on November 8, 2006, situated in Plaquemines Parish, Louisiana, and more particularly described as follows: Beginning at a point on the North line of Block 50, Breton Sound Area, having Coordinates of X = 2,657,475.00 and Y = 292,830.00; thence East 1,649.27 feet along the North line of said Block 50, to a point having Coordinates of X = 2,659,124.27 and Y = 292,830.00; thence South 9,716.45 feet to a point on the boundary of State Lease No. 18578 having Coordinates of X = 2,659,124.27 and Y = 283,113.55; thence along the boundary of said State Lease No. 18578 the following courses: North 44 degrees 13 minutes 57 seconds West 115.07 feet and South 27 degrees 27 minutes 07 seconds West 3,383.62 feet to a point having Coordinates of X = 2,657,484.13 and Y = 280,193.38; thence North 00 degrees 02 minutes 29 seconds West 12,636.62 feet to the point of beginning, containing approximately **417.91 acres**, all as more particularly outlined on a plat on file in the Office of Mineral Resources, Department of Natural Resources. All bearings, distances and coordinates are based on Louisiana Coordinate System of 1927, (North or South Zone), where applicable.

NOTE: The above description of the Tract nominated for lease has been provided and corrected, where required, exclusively by the nomination party. Any mineral lease selected from this Tract and awarded by the Louisiana State Mineral Board shall be without warranty of any kind, either express, implied, or statutory, including, but not limited to, the implied warranties of merchantability and fitness for a particular purpose. Should the mineral lease awarded by the Louisiana State Mineral Board be subsequently modified, cancelled or abrogated due to the existence of conflicting leases, operating agreements, private claims or other future obligations or conditions which may affect all or any portion of the leased Tract, it shall not relieve the Lessee of the obligation to pay any bonus due thereon to the Louisiana State Mineral Board, nor shall the Louisiana State Mineral Board be obligated to refund any consideration paid by the Lessor prior to such modification, cancellation, or abrogation, including, but not limited to, bonuses, rentals and royalties.

NOTE: The State of Louisiana does hereby reserve, and this lease shall be subject to, the imprescriptible right of surface use in the nature of a servitude in favor of the Department of Natural Resources, including its Offices and Commissions, for the sole purpose of implementing, constructing, servicing and maintaining approved coastal zone management and/or restoration projects. Utilization of any and all rights derived under this lease by the mineral lessee, its agents, successors or assigns, shall not interfere with nor hinder the reasonable surface use by the

Department of Natural Resources, its Offices or Commissions, as herein above reserved.

Applicant: HAROLD J. ANDERSON, INC.

Bidder	Cash Payment	Price/Acre	Rental	Oil	Gas	Other

Legend

- 06110032
- Blocks
- Tracts
- Active_Leases

BS0047

P.O.B.

BS0051

TR 38571

SL 18578

PLAQUEMINES PARISH

BRETON SOUND AREA

BS0050

GULF OF MEXICO

2,000 Feet



BS0049

TRACT 38700 - Portion of Blocks 51, and 52, Breton Sound Area, Plaquemines Parish, Louisiana

All of the lands now or formerly constituting the beds and bottoms of all water bodies of every nature and description the title of which vests in the State of Louisiana, together with all islands arising therein and other lands formed by accretion or by reliction, where allowed by law, excepting tax adjudicated lands, and not presently under mineral lease and cross hatched on November 8, 2006, situated in Plaquemines Parish, Louisiana, and more particularly described as follows: Beginning at a point on the North line of Block 51, Breton Sound Area, having Coordinates of X = 2,672,225.00 and Y = 292,830.00; thence East 5,941.42 feet along the North line of said Block 51 to a point on the 1975 Decree Shoreline, having Coordinates of X = 2,678,166.42 and Y = 292,830.00; thence Southeasterly on a straight line along said 1975 Decree Shoreline to the Northeast corner of State Lease No. 18577 having Coordinates of X = 2,678,270.74 and Y = 291,853.93; thence along the boundary of said State Lease No. 18577 the following courses: South 75 degrees 44 minutes 16 seconds West 1,412.27 feet, South 3,977.00 feet and South 88 degrees 44 minutes 25 seconds East 1,835.71 feet to its Southeast corner having Coordinates of X = 2,678,737.27 and Y = 287,488.64; thence Southeasterly on a straight line to a point on the South line of Block 52, Breton Sound Area having Coordinates of X = 2,679,742.80 and Y = 278,080.00; thence West 142.80 feet along the South line of said Block 52 to its Southwest corner, also being the Southeast corner of Block 51, Breton Sound Area, and the Southeast corner of State Lease No. 17244 having Coordinates of X = 2,679,600.00 and Y = 278,080.00; thence along the boundary of said State Lease No. 17244 the following courses: North 33 degrees 05 minutes 49 seconds West 1,607.88 feet, West 2,053.00 feet and South 1,347.00 feet to its Southwest corner and a point on the South line of said Block 51 having Coordinates of X = 2,676,669.00 and Y = 278,080.00; thence West 4,444.00 feet along the South line of said Block 51 to a point having Coordinates of X = 2,672,225.00 and Y = 278,080.00; thence North 5,931.32 feet to a point on the South line of State Lease No. 16890 having Coordinates of X = 2,672,225.00 and Y = 284,011.32; thence along the boundary of said State Lease No. 16890 the following courses: South 87 degrees 28 minutes 59 seconds East 485.47 feet and North 31 degrees 53 minutes 55 seconds East 1,725.59 feet to a point on its East line, also being the Southwest corner of State Lease No. 17243 having Coordinates of X = 2,673,621.83 and Y = 285,455.00; thence along the boundary of said State Lease No. 17243 the following courses: East 1,664.49 feet, North 39 degrees 23 minutes 05 seconds East 782.76 feet, North 1,332.00 feet and West 1,601.14 feet to its Northwest corner, also being a point on the boundary of said State Lease No. 16890 having Coordinates of X = 2,674,181.86 and Y = 287,392.00; thence along the boundary of said State Lease No. 16890 the following courses: North 01 degrees 37 minutes 30 seconds West 738.30 feet, West 1,289.52 feet and South 73 degrees 14 minutes 30 seconds West 675.07 feet to a point on its boundary having Coordinates of X = 2,672,225.00 and Y = 287,935.35; thence North 4,894.65 feet to the point of beginning, containing approximately **1,829.63 acres**, all as more particularly outlined

on a plat on file in the Office of Mineral Resources, Department of Natural Resources. All bearings, distances and coordinates are based on Louisiana Coordinate System of 1927, (North or South Zone), where applicable.

NOTE: The above description of the Tract nominated for lease has been provided and corrected, where required, exclusively by the nomination party. Any mineral lease selected from this Tract and awarded by the Louisiana State Mineral Board shall be without warranty of any kind, either express, implied, or statutory, including, but not limited to, the implied warranties of merchantability and fitness for a particular purpose. Should the mineral lease awarded by the Louisiana State Mineral Board be subsequently modified, cancelled or abrogated due to the existence of conflicting leases, operating agreements, private claims or other future obligations or conditions which may affect all or any portion of the leased Tract, it shall not relieve the Lessee of the obligation to pay any bonus due thereon to the Louisiana State Mineral Board, nor shall the Louisiana State Mineral Board be obligated to refund any consideration paid by the Lessor prior to such modification, cancellation, or abrogation, including, but not limited to, bonuses, rentals and royalties.

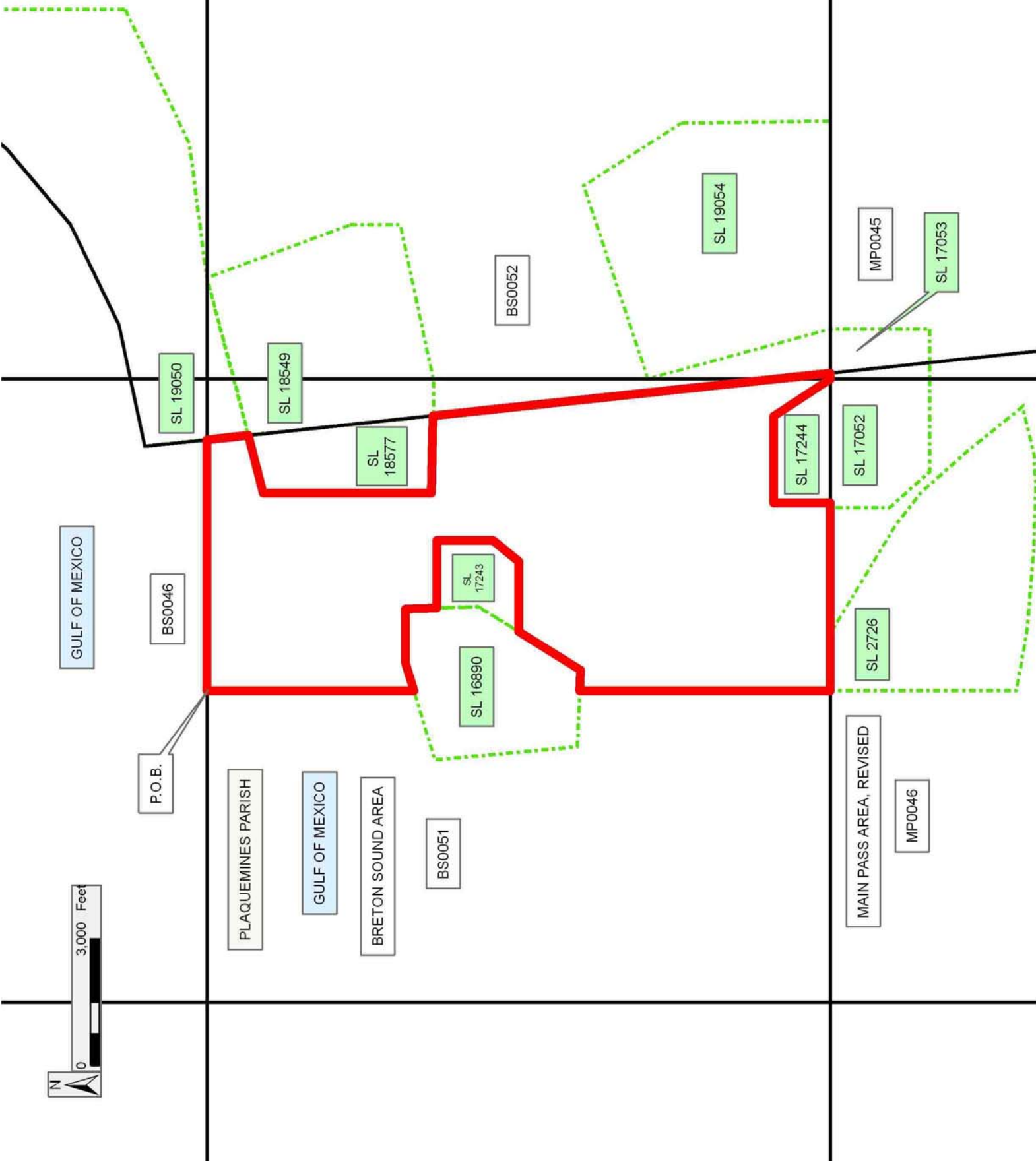
NOTE: The State of Louisiana does hereby reserve, and this lease shall be subject to, the imprescriptible right of surface use in the nature of a servitude in favor of the Department of Natural Resources, including its Offices and Commissions, for the sole purpose of implementing, constructing, servicing and maintaining approved coastal zone management and/or restoration projects. Utilization of any and all rights derived under this lease by the mineral lessee, its agents, successors or assigns, shall not interfere with nor hinder the reasonable surface use by the Department of Natural Resources, its Offices or Commissions, as herein above reserved.

Applicant: HAROLD J. ANDERSON, INC.

Bidder	Cash Payment	Price/Acre	Rental	Oil	Gas	Other

Legend

- 06110034
- Blocks
- Active_Leases



TRACT 38701 - Terrebonne Parish, Louisiana

All of the lands now or formerly constituting the beds and bottoms of all water bodies of every nature and description the title of which vests in the State of Louisiana, together with all islands arising therein and other lands formed by accretion or by reliction, where allowed by law, excepting tax adjudicated lands, and not presently under mineral lease and cross hatched on November 8, 2006, situated in Terrebonne Parish, Louisiana, and more particularly described as follows: Beginning at a point on the South boundary of State Lease No. 18891, having Coordinates of X = 2,207,014.52 and Y = 277,957.90; thence East 2,605.48 feet along the South boundary of said State Lease No. 18891 to the Northwest corner of State Lease No. 18892 having Coordinates of X = 2,209,620.00 and Y = 277,957.90; thence South 4,053.76 feet along the West boundary of said State Lease No. 18892 to its Southwest corner, also being the Northwest corner of State Lease No. 18893, having Coordinates of X = 2,209,620.00 and Y = 273,904.14; thence West 2,605.48 feet to a point having Coordinates of X = 2,207,014.52 and Y = 273,904.14; thence North 4,053.76 feet to the point of beginning, containing approximately **158 acres**, all as more particularly outlined on a plat on file in the Office of Mineral Resources, Department of Natural Resources. All bearings, distances and coordinates are based on Louisiana Coordinate System of 1927, (North or South Zone), where applicable.

NOTE: The above description of the Tract nominated for lease has been provided and corrected, where required, exclusively by the nomination party. Any mineral lease selected from this Tract and awarded by the Louisiana State Mineral Board shall be without warranty of any kind, either express, implied, or statutory, including, but not limited to, the implied warranties of merchantability and fitness for a particular purpose. Should the mineral lease awarded by the Louisiana State Mineral Board be subsequently modified, cancelled or abrogated due to the existence of conflicting leases, operating agreements, private claims or other future obligations or conditions which may affect all or any portion of the leased Tract, it shall not relieve the Lessee of the obligation to pay any bonus due thereon to the Louisiana State Mineral Board, nor shall the Louisiana State Mineral Board be obligated to refund any consideration paid by the Lessor prior to such modification, cancellation, or abrogation, including, but not limited to, bonuses, rentals and royalties.

NOTE: The State of Louisiana does hereby reserve, and this lease shall be subject to, the imprescriptible right of surface use in the nature of a servitude in favor of the Department of Natural Resources, including its Offices and Commissions, for the sole purpose of implementing, constructing, servicing and maintaining approved coastal zone management and/or restoration projects. Utilization of any and all rights derived under this lease by the mineral lessee, its agents, successors or assigns, shall not interfere with nor hinder the reasonable surface use by the Department of Natural Resources, its Offices or Commissions, as herein above reserved.

NOTE: The Department of Wildlife and Fisheries has designated certain areas in the coastal waters of the State of Louisiana as Oyster Seed Bed Areas. The exact location of those Seed Bed Areas must be obtained from the Department of Wildlife and Fisheries and any work done under a mineral lease from the State of Louisiana may necessarily be conducted in conformity with the rules and regulations promulgated by the said Department of Wildlife and Fisheries for Oyster Seed Bed Areas.

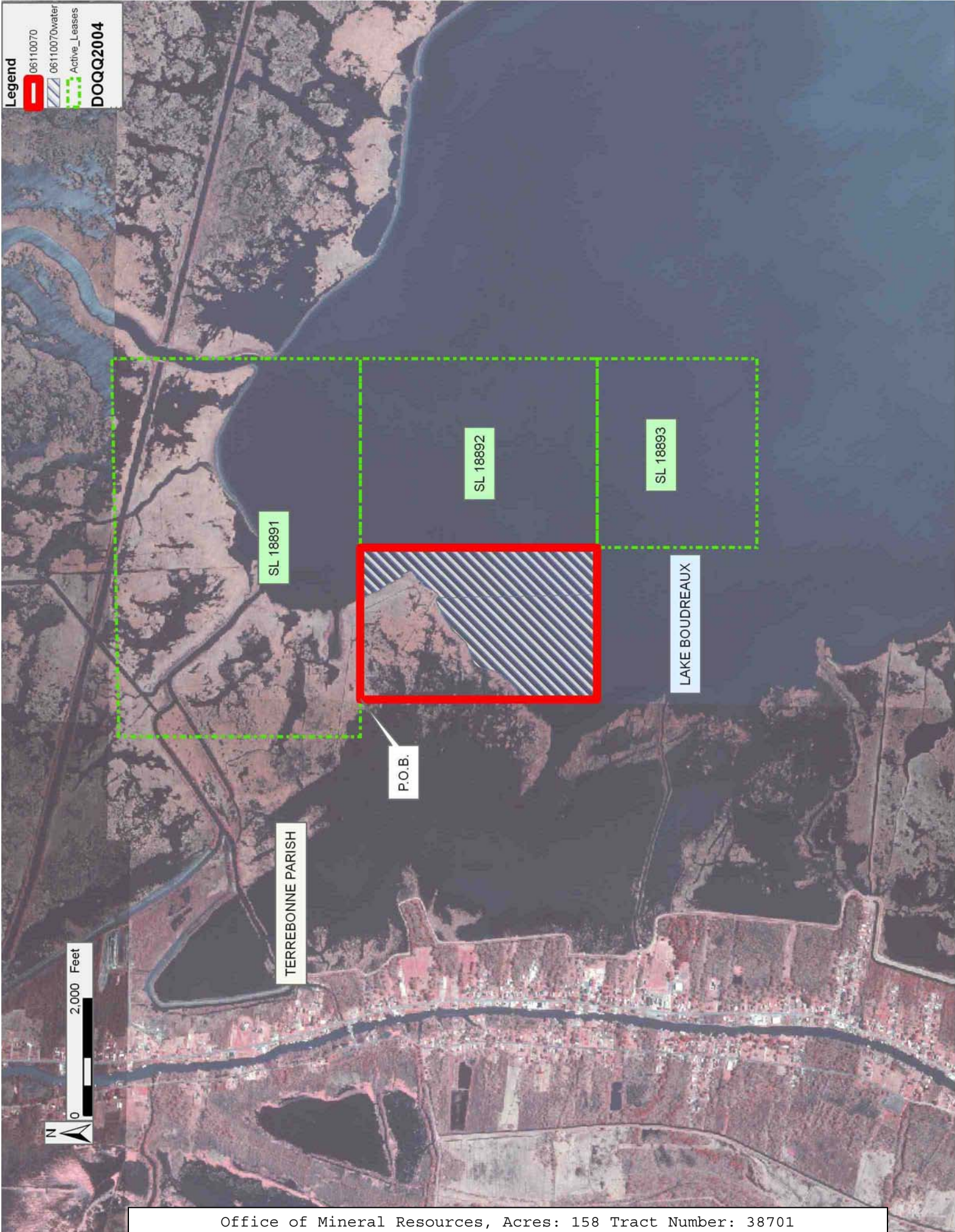
Applicant: THEOPHILUS OIL, GAS & LAND SERVICES, LLC

Bidder	Cash Payment	Price/Acre	Rental	Oil	Gas	Other

Legend

-  06110070
-  06110070water
-  Active_Leases

DOQQ2004



TRACT 38702 - Terrebonne Parish, Louisiana

All of the lands now or formerly constituting the beds and bottoms of all water bodies of every nature and description the title of which vests in the State of Louisiana, together with all islands arising therein and other lands formed by accretion or by reliction, where allowed by law, excepting tax adjudicated lands, and not presently under mineral lease and cross hatched on November 8, 2006, situated in Terrebonne Parish, Louisiana, and more particularly described as follows: Beginning at a point having Coordinates of X = 2,207,014.52 and Y = 273,904.14; thence East 2,605.48 feet to the Northwest corner of State Lease No. 18893, also being the Southwest corner of State Lease No. 18892 having Coordinates of X = 2,209,620.00 and Y = 273,904.14; thence South 2,736.25 feet along the West boundary of said State Lease No. 18893 to its Southwest corner, having Coordinates of X = 2,209,620.00 and Y = 271,167.89; thence West 2,605.48 feet to a point having Coordinates of X = 2,207,014.52 and Y = 271,167.89; thence North 2,736.25 feet to the point of beginning, containing approximately **161 acres**, all as more particularly outlined on a plat on file in the Office of Mineral Resources, Department of Natural Resources. All bearings, distances and coordinates are based on Louisiana Coordinate System of 1927, (North or South Zone), where applicable.

NOTE: The above description of the Tract nominated for lease has been provided and corrected, where required, exclusively by the nomination party. Any mineral lease selected from this Tract and awarded by the Louisiana State Mineral Board shall be without warranty of any kind, either express, implied, or statutory, including, but not limited to, the implied warranties of merchantability and fitness for a particular purpose. Should the mineral lease awarded by the Louisiana State Mineral Board be subsequently modified, cancelled or abrogated due to the existence of conflicting leases, operating agreements, private claims or other future obligations or conditions which may affect all or any portion of the leased Tract, it shall not relieve the Lessee of the obligation to pay any bonus due thereon to the Louisiana State Mineral Board, nor shall the Louisiana State Mineral Board be obligated to refund any consideration paid by the Lessor prior to such modification, cancellation, or abrogation, including, but not limited to, bonuses, rentals and royalties.

NOTE: The State of Louisiana does hereby reserve, and this lease shall be subject to, the imprescriptible right of surface use in the nature of a servitude in favor of the Department of Natural Resources, including its Offices and Commissions, for the sole purpose of implementing, constructing, servicing and maintaining approved coastal zone management and/or restoration projects. Utilization of any and all rights derived under this lease by the mineral lessee, its agents, successors or assigns, shall not interfere with nor hinder the reasonable surface use by the Department of Natural Resources, its Offices or Commissions, as herein above reserved.

NOTE: The Department of Wildlife and Fisheries has designated certain areas in the coastal waters of the State of Louisiana as Oyster Seed Bed Areas. The exact location of those Seed Bed Areas must be obtained from the Department of Wildlife and Fisheries and any work done under a mineral lease from the State of Louisiana may necessarily be conducted in conformity with the rules and regulations promulgated by the said Department of Wildlife and Fisheries for Oyster Seed Bed Areas.

Applicant: THEOPHILUS OIL, GAS & LAND SERVICES, LLC

Bidder	Cash Payment	Price/Acre	Rental	Oil	Gas	Other

Legend

06110071

06110071water

Active_Leases

DOQQ2004

TERREBONNE PARISH

LAKE BOUDREAUX

SL 18892

SL 18893

P.O.B.



TRACT 38703 - Terrebonne Parish, Louisiana

All of the lands now or formerly constituting the beds and bottoms of all water bodies of every nature and description the title of which vests in the State of Louisiana, together with all islands arising therein and other lands formed by accretion or by reliction, where allowed by law, excepting tax adjudicated lands, and not presently under mineral lease and cross hatched on November 8, 2006, situated in Terrebonne Parish, Louisiana, and more particularly described as follows: Beginning at a point having Coordinates of X = 2,207,014.52 and Y = 271,167.89; thence East 2,605.48 feet to the Southwest corner of State Lease No. 18893 having Coordinates of X = 2,209,620.00 and Y = 271,167.89; thence East 3,232.54 feet along the South boundary of said State Lease No. 18893 to its Southeast corner, also being the Southwest corner of State Lease No. 17968, having Coordinates of X = 2,212,852.54 and Y = 271,167.89; thence East 955.44 feet along the South boundary of said State Lease No. 17968 to a corner located on the West boundary of State Lease No. 17967, having Coordinates of X = 2,213,807.98 and Y = 271,167.89; thence South 950.89 feet along the West boundary of said State Lease No. 17967 to the Northeast corner of State Lease No. 18843, having Coordinates of X = 2,213,807.98 and Y = 270,217.00; thence West 6,793.46 feet along the North boundary of said State Lease No. 18843 to its Northwest corner, having Coordinates of X = 2,207,014.52 and Y = 270,217.00; thence North 950.89 feet to the point of beginning, containing approximately **141 acres**, all as more particularly outlined on a plat on file in the Office of Mineral Resources, Department of Natural Resources. All bearings, distances and coordinates are based on Louisiana Coordinate System of 1927, (North or South Zone), where applicable.

NOTE: The above description of the Tract nominated for lease has been provided and corrected, where required, exclusively by the nomination party. Any mineral lease selected from this Tract and awarded by the Louisiana State Mineral Board shall be without warranty of any kind, either express, implied, or statutory, including, but not limited to, the implied warranties of merchantability and fitness for a particular purpose. Should the mineral lease awarded by the Louisiana State Mineral Board be subsequently modified, cancelled or abrogated due to the existence of conflicting leases, operating agreements, private claims or other future obligations or conditions which may affect all or any portion of the leased Tract, it shall not relieve the Lessee of the obligation to pay any bonus due thereon to the Louisiana State Mineral Board, nor shall the Louisiana State Mineral Board be obligated to refund any consideration paid by the Lessor prior to such modification, cancellation, or abrogation, including, but not limited to, bonuses, rentals and royalties.

NOTE: The State of Louisiana does hereby reserve, and this lease shall be subject to, the imprescriptible right of surface use in the nature of a servitude in favor of the Department of Natural Resources, including its Offices and Commissions, for the sole purpose of implementing, constructing, servicing and maintaining approved coastal zone management

and/or restoration projects. Utilization of any and all rights derived under this lease by the mineral lessee, its agents, successors or assigns, shall not interfere with nor hinder the reasonable surface use by the Department of Natural Resources, its Offices or Commissions, as herein above reserved.

NOTE: The Department of Wildlife and Fisheries has designated certain areas in the coastal waters of the State of Louisiana as Oyster Seed Bed Areas. The exact location of those Seed Bed Areas must be obtained from the Department of Wildlife and Fisheries and any work done under a mineral lease from the State of Louisiana may necessarily be conducted in conformity with the rules and regulations promulgated by the said Department of Wildlife and Fisheries for Oyster Seed Bed Areas.

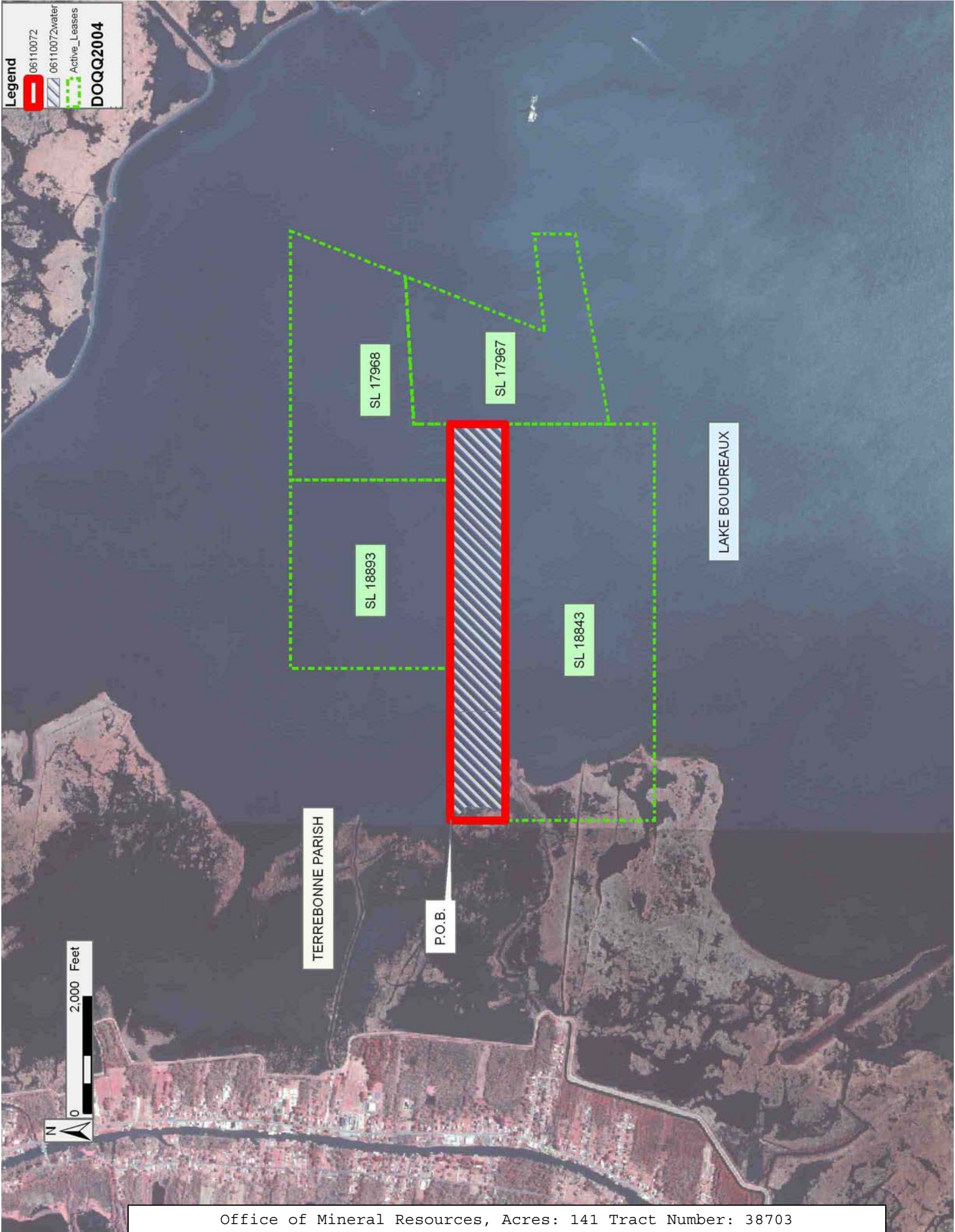
Applicant: THEPHILUS OIL, GAS & LAND SERVICES, LLC

Bidder	Cash Payment	Price/Acre	Rental	Oil	Gas	Other

Legend

-  06110072
-  06110072water
-  Active_Leases

DOQQ2004



TRACT 38704 - Portion of Block 52, Main Pass Area, Revised, Plaquemines Parish, Louisiana

All of the lands now or formerly constituting the beds and bottoms of all water bodies of every nature and description the title of which vests in the State of Louisiana, together with all islands arising therein and other lands formed by accretion or by reliction, where allowed by law, excepting tax adjudicated lands, and not presently under mineral lease and cross hatched on November 8, 2006, situated in Plaquemines Parish, Louisiana, and more particularly described as follows: Beginning at the most West corner of State Lease No. 18895, said point located within Block 52, Main Pass Area, Revised, having Coordinates of X = 2,656,904.00 and Y = 261,271.20; thence South 66 degrees 30 minutes 50 seconds East 4,990.80 feet along the Southwest boundary of said State Lease No. 18895 to its most South corner, also being the Southwest corner of State Lease No. 16849, as amended, having Coordinates of X = 2,661,481.34 and Y = 259,282.23; thence along the Southern boundary of said State Lease No. 16849 the following: South 82 degrees 11 minutes 24 seconds East 1,464.54 feet and South 54 degrees 11 minutes 51 seconds East 0.62 feet to a point having Coordinates of X = 2,662,932.80 and Y = 259,082.85, also being the Northwest corner of State Lease No. 16850; thence South 54 degrees 11 minutes 51 seconds East 2,363.88 feet to the South corner of said State Lease No. 16850, also being the North corner of State Lease No. 11188, as amended, located on the East line of said Block 52, having Coordinates of X = 2,664,850.00 and Y = 257,700.00; thence South 37 degrees 23 minutes 49 seconds West 4,420.00 feet along the Northwest boundary of said State Lease No. 11188 to its West corner having Coordinates of X = 2,662,165.59 and Y = 254,188.54; thence Southeasterly approximately 4,719 feet along the Southwest boundary of said State Lease No. 11188 to its South corner located on the North boundary of State Lease No. 195, as amended, and on the East line of said Block 52, having a Coordinate of X = 2,664,850.00; thence Southwesterly approximately 860 feet and Northwesterly approximately 15,248 feet along the Northerly boundary of said State Lease No. 195 to a Northeast corner; thence Northeasterly approximately 4,000 feet to the point of beginning, **LESS AND EXCEPT** any portions of State Lease No. 195, as amended, that may lie within the above described tract, containing approximately **1,163 acres**, all as more particularly outlined on a plat on file in the Office of Mineral Resources, Department of Natural Resources. All bearings, distances and coordinates are based on Louisiana Coordinate System of 1927, (North or South Zone), where applicable.

NOTE: The above description of the Tract nominated for lease has been provided and corrected, where required, exclusively by the nomination party. Any mineral lease selected from this Tract and awarded by the Louisiana State Mineral Board shall be without warranty of any kind, either express, implied, or statutory, including, but not limited to, the implied warranties of merchantability and fitness for a particular purpose. Should the mineral lease awarded by the Louisiana State Mineral Board be subsequently modified, cancelled or abrogated due to the existence of conflicting leases, operating agreements, private claims or

other future obligations or conditions which may affect all or any portion of the leased Tract, it shall not relieve the Lessee of the obligation to pay any bonus due thereon to the Louisiana State Mineral Board, nor shall the Louisiana State Mineral Board be obligated to refund any consideration paid by the Lessor prior to such modification, cancellation, or abrogation, including, but not limited to, bonuses, rentals and royalties.

NOTE: The State of Louisiana does hereby reserve, and this lease shall be subject to, the imprescriptible right of surface use in the nature of a servitude in favor of the Department of Natural Resources, including its Offices and Commissions, for the sole purpose of implementing, constructing, servicing and maintaining approved coastal zone management and/or restoration projects. Utilization of any and all rights derived under this lease by the mineral lessee, its agents, successors or assigns, shall not interfere with nor hinder the reasonable surface use by the Department of Natural Resources, its Offices or Commissions, as herein above reserved.

NOTE: The Department of Wildlife and Fisheries has designated certain areas in the coastal waters of the State of Louisiana as Oyster Seed Bed Areas. The exact location of those Seed Bed Areas must be obtained from the Department of Wildlife and Fisheries and any work done under a mineral lease from the State of Louisiana may necessarily be conducted in conformity with the rules and regulations promulgated by the said Department of Wildlife and Fisheries for Oyster Seed Bed Areas.

Applicant: LOUISIANA MINERALS MANAGEMENT

Bidder	Cash Payment	Price/Acre	Rental	Oil	Gas	Other

Legend

- 06110062
- Blocks
- Active_Leases

