

**TRACT 38675 - Plaquemines Parish, Louisiana**

All of the lands now or formerly constituting the beds and bottoms of all water bodies of every nature and description the title of which vests in the State of Louisiana, together with all islands arising therein and other lands formed by accretion or by reliction, where allowed by law, excepting tax adjudicated lands, and not presently under mineral lease and cross hatched on November 8, 2006, situated in Plaquemines Parish, Louisiana, and more particularly described as follows: Beginning at a point having Coordinates of X = 2,525,660.00 and Y = 346,147.00, said point being the Westernmost point of State Lease No. 18654; Thence West 1,535.05 feet to a point having Coordinates of X = 2,524,124.95 and Y = 346,147.00; Thence North 02 degrees 43 minutes 34 seconds West 10,337.22 feet to a point having Coordinates of X = 2,523,633.32 and Y = 356,472.52; Thence North 89 degrees 17 minutes 51 seconds East 14,107.74 feet to a point having Coordinates of X = 2,537,740.00 and Y = 356,645.51; Thence South 1,765.51 feet to a point having Coordinates of X = 2,537,740.00 and Y = 354,880.00, said point being the Northernmost point of said State Lease No. 18654; Thence South 54 degrees 08 minutes 09 seconds West 14,906.10 feet on and along the Northwestern boundary of said State Lease No. 18654 to the point of beginning, containing approximately **1,585 acres**, all as more particularly outlined on a plat on file in the Office of Mineral Resources, Department of Natural Resources. All bearings, distances and coordinates are based on Louisiana Coordinate System of 1927, (North or South Zone), where applicable.

NOTE: The above description of the Tract nominated for lease has been provided and corrected, where required, exclusively by the nomination party. Any mineral lease selected from this Tract and awarded by the Louisiana State Mineral Board shall be without warranty of any kind, either express, implied, or statutory, including, but not limited to, the implied warranties of merchantability and fitness for a particular purpose. Should the mineral lease awarded by the Louisiana State Mineral Board be subsequently modified, cancelled or abrogated due to the existence of conflicting leases, operating agreements, private claims or other future obligations or conditions which may affect all or any portion of the leased Tract, it shall not relieve the Lessee of the obligation to pay any bonus due thereon to the Louisiana State Mineral Board, nor shall the Louisiana State Mineral Board be obligated to refund any consideration paid by the Lessor prior to such modification, cancellation, or abrogation, including, but not limited to, bonuses, rentals and royalties.

NOTE: The State of Louisiana does hereby reserve, and this lease shall be subject to, the imprescriptible right of surface use in the nature of a servitude in favor of the Department of Natural Resources, including its Offices and Commissions, for the sole purpose of implementing, constructing, servicing and maintaining approved coastal zone management and/or restoration projects. Utilization of any and all rights derived under this lease by the mineral lessee, its agents, successors or assigns, shall not interfere with nor hinder the reasonable surface use by the

Department of Natural Resources, its Offices or Commissions, as herein above reserved.

NOTE: The Department of Wildlife and Fisheries has designated certain areas in the coastal waters of the State of Louisiana as Oyster Seed Bed Areas. The exact location of those Seed Bed Areas must be obtained from the Department of Wildlife and Fisheries and any work done under a mineral lease from the State of Louisiana may necessarily be conducted in conformity with the rules and regulations promulgated by the said Department of Wildlife and Fisheries for Oyster Seed Bed Areas.

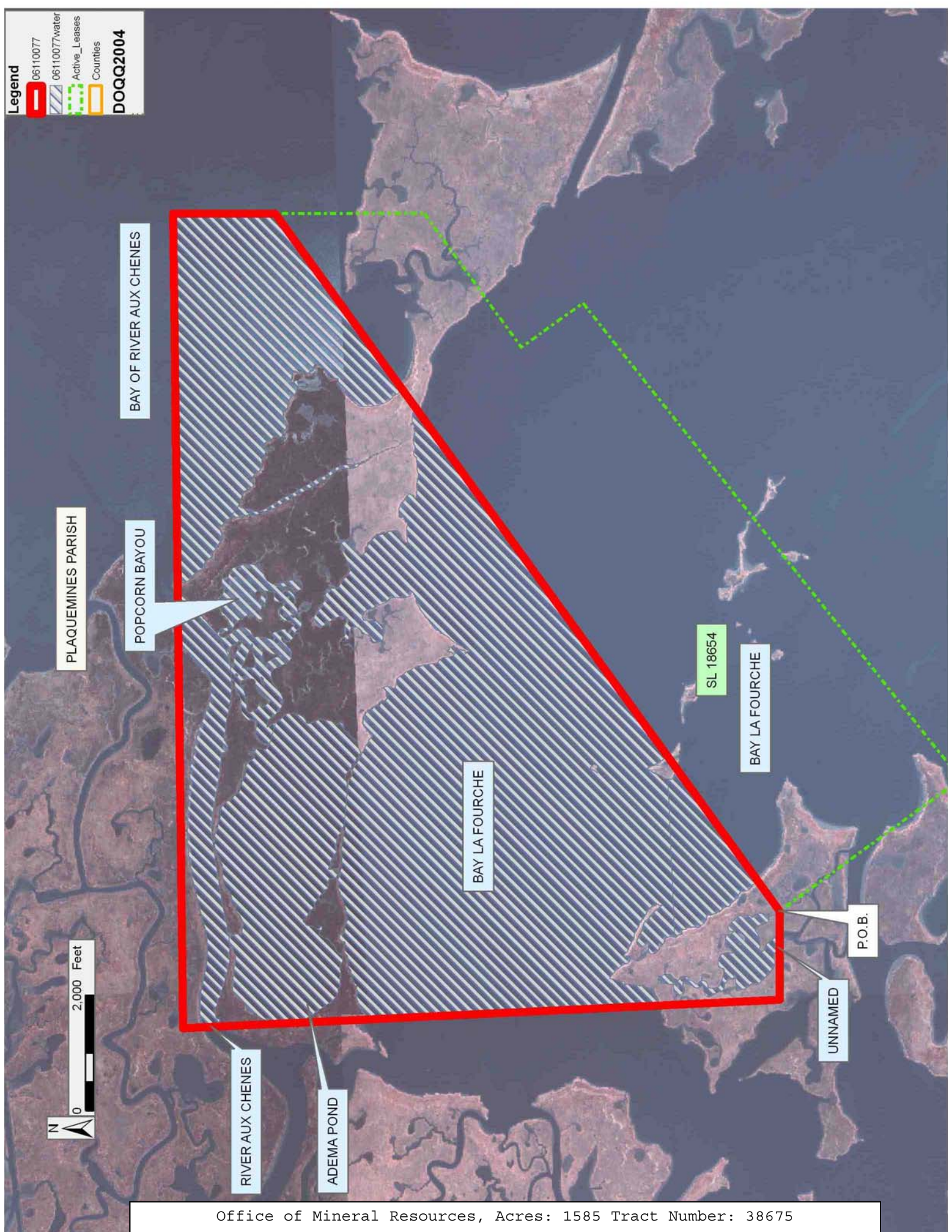
Applicant: ROBERT A. SCHROEDER, INC.

Bidder	Cash Payment	Price/Acre	Rental	Oil	Gas	Other

**Legend**

- 06110077
- 06110077/water
- Active\_Leases
- Counties

**DOQQ2004**



BAY OF RIVER AUX CHENES

PLAQUEMINES PARISH

POPCORN BAYOU

RIVER AUX CHENES

ADEMA POND

BAY LA FOURCHE

SL 18654

BAY LA FOURCHE

UNNAMED

P.O.B.

**TRACT 38676 - Terrebonne Parish, Louisiana**

All of the lands now or formerly constituting the beds and bottoms of all water bodies of every nature and description the title of which vests in the State of Louisiana, together with all islands arising therein and other lands formed by accretion or by reliction, where allowed by law, excepting tax adjudicated lands, and not presently under mineral lease and cross hatched on November 8, 2006, situated in Terrebonne Parish, Louisiana, and more particularly described as follows: Beginning at a point having Coordinates of X = 2,123,222.19 and Y = 353,883.34; thence South 45 degrees 00 minutes 00 seconds West 4,000.00 feet to a point having Coordinates of X = 2,120,393.76 and Y = 351,054.91; thence North 45 degrees 00 minutes 00 seconds West 9,300.00 feet to a point having Coordinates of X = 2,113,817.67 and Y = 357,631.00; thence North 45 degrees 00 minutes 00 seconds East 4,000.00 feet to a point having Coordinates of X = 2,116,646.10 and Y = 360,459.43; thence South 45 degrees 00 minutes 00 seconds East 9,300.00 feet to the Point of Beginning, containing approximately **25 acres**, all as more particularly outlined on a plat on file in the Office of Mineral Resources, Department of Natural Resources. All bearings, distances and coordinates are based on Louisiana Coordinate System of 1927, (North or South Zone), where applicable.

NOTE: The above description of the Tract nominated for lease has been provided and corrected, where required, exclusively by the nomination party. Any mineral lease selected from this Tract and awarded by the Louisiana State Mineral Board shall be without warranty of any kind, either express, implied, or statutory, including, but not limited to, the implied warranties of merchantability and fitness for a particular purpose. Should the mineral lease awarded by the Louisiana State Mineral Board be subsequently modified, cancelled or abrogated due to the existence of conflicting leases, operating agreements, private claims or other future obligations or conditions which may affect all or any portion of the leased Tract, it shall not relieve the Lessee of the obligation to pay any bonus due thereon to the Louisiana State Mineral Board, nor shall the Louisiana State Mineral Board be obligated to refund any consideration paid by the Lessor prior to such modification, cancellation, or abrogation, including, but not limited to, bonuses, rentals and royalties.

Bidder	Cash Payment	Price/Acre	Rental	Oil	Gas	Other

Applicant: ACL EXPLORATION, INC.

Legend

- 06110007
- 06110007/water
- DOQQ2004

TERREBONNE PARISH

T16S - R15E

P.O.B.

BAYOU BLACK



**TRACT 38677 - Plaquemines Parish, Louisiana**

All of the lands now or formerly constituting the beds and bottoms of all water bodies of every nature and description the title of which vests in the State of Louisiana, together with all islands arising therein and other lands formed by accretion or by reliction, where allowed by law, excepting tax adjudicated lands, and not presently under mineral lease and cross hatched on November 8, 2006, situated in Plaquemines Parish, Louisiana, and more particularly described as follows: Beginning at a point having Coordinates of X = 2,525,660.00 and Y = 346,147.00, said point being the westernmost point of State Lease No. 18654; Thence along the western and southern boundaries of said State Lease No. 18654 the following courses and distances, to wit: South 36 degrees 06 minutes 24 seconds East 3,874.14 feet to a point having Coordinates of X = 2,527,943.00 and Y = 343,017.00; North 51 degrees 36 minutes 56 seconds East 10,526.08 feet to a point having Coordinates of X = 2,536,194.00 and Y = 349,553.00; North 35 degrees 46 minutes 15 seconds West 1,313.84 feet to a point having Coordinates of X = 2,535,426.00 and Y = 350,619.00; and North 54 degrees 05 minutes 05 seconds East 2,857.20 feet to a point having Coordinates of X = 2,537,740.00 and Y = 352,295.00; Thence East 1,934.65 feet to a point having Coordinates of X = 2,539,674.65 and Y = 352,295.00; Thence South 02 degrees 11 minutes 09 seconds East 7,042.20 feet to a point having Coordinates of X = 2,539,943.25 and Y = 345,257.92, said point being on a northern boundary of State Lease No. 18655; Thence along the northern, western and southern boundaries of said State of Louisiana State Lease No. 18655 the following courses and distances, to wit: North 81 degrees 47 minutes 51 seconds West 1,822.90 feet to a point having Coordinates of X = 2,538,139.00 and Y = 345,518.00; South 40 degrees 30 minutes 20 seconds West 2,463.36 feet to a point having Coordinates of X = 2,536,539.00 and Y = 343,645.00; South 54 degrees 15 minutes 53 seconds East 2,804.82 feet to a point having Coordinates of X = 2,538,815.74 and Y = 342,006.87; and North 38 degrees 36 minutes 10 seconds East 1,918.22 feet to a point having Coordinates of X = 2,540,012.55 and Y = 343,505.95; Thence South 02 degrees 15 minutes 50 seconds East 1,834.54 feet to a point having Coordinates of X = 2,540,085.02 and Y = 341,672.84; Thence South 87 degrees 30 minutes 18 seconds West 15,675.60 feet to a point having Coordinates of X = 2,524,424.28 and Y = 340,990.41; Thence North 03 degrees 19 minutes 20 seconds West 5,165.27 feet to a point having Coordinates of X = 2,524,124.95 and Y = 346,147.00; Thence East 1,535.05 feet to the point of beginning, containing approximately **1,632 acres**, all as more particularly outlined on a plat on file in the Office of Mineral Resources, Department of Natural Resources. All bearings, distances and coordinates are based on Louisiana Coordinate System of 1927, (North or South Zone), where applicable.

NOTE: The above description of the Tract nominated for lease has been provided and corrected, where required, exclusively by the nomination party. Any mineral lease selected from this Tract and awarded by the Louisiana State Mineral Board shall be without warranty of any kind,

either express, implied, or statutory, including, but not limited to, the implied warranties of merchantability and fitness for a particular purpose. Should the mineral lease awarded by the Louisiana State Mineral Board be subsequently modified, cancelled or abrogated due to the existence of conflicting leases, operating agreements, private claims or other future obligations or conditions which may affect all or any portion of the leased Tract, it shall not relieve the Lessee of the obligation to pay any bonus due thereon to the Louisiana State Mineral Board, nor shall the Louisiana State Mineral Board be obligated to refund any consideration paid by the Lessor prior to such modification, cancellation, or abrogation, including, but not limited to, bonuses, rentals and royalties.

NOTE: The State of Louisiana does hereby reserve, and this lease shall be subject to, the imprescriptible right of surface use in the nature of a servitude in favor of the Department of Natural Resources, including its Offices and Commissions, for the sole purpose of implementing, constructing, servicing and maintaining approved coastal zone management and/or restoration projects. Utilization of any and all rights derived under this lease by the mineral lessee, its agents, successors or assigns, shall not interfere with nor hinder the reasonable surface use by the Department of Natural Resources, its Offices or Commissions, as herein above reserved.

NOTE: The Department of Wildlife and Fisheries has designated certain areas in the coastal waters of the State of Louisiana as Oyster Seed Bed Areas. The exact location of those Seed Bed Areas must be obtained from the Department of Wildlife and Fisheries and any work done under a mineral lease from the State of Louisiana may necessarily be conducted in conformity with the rules and regulations promulgated by the said Department of Wildlife and Fisheries for Oyster Seed Bed Areas.

Applicant: ROBERT A. SCHROEDER, INC.

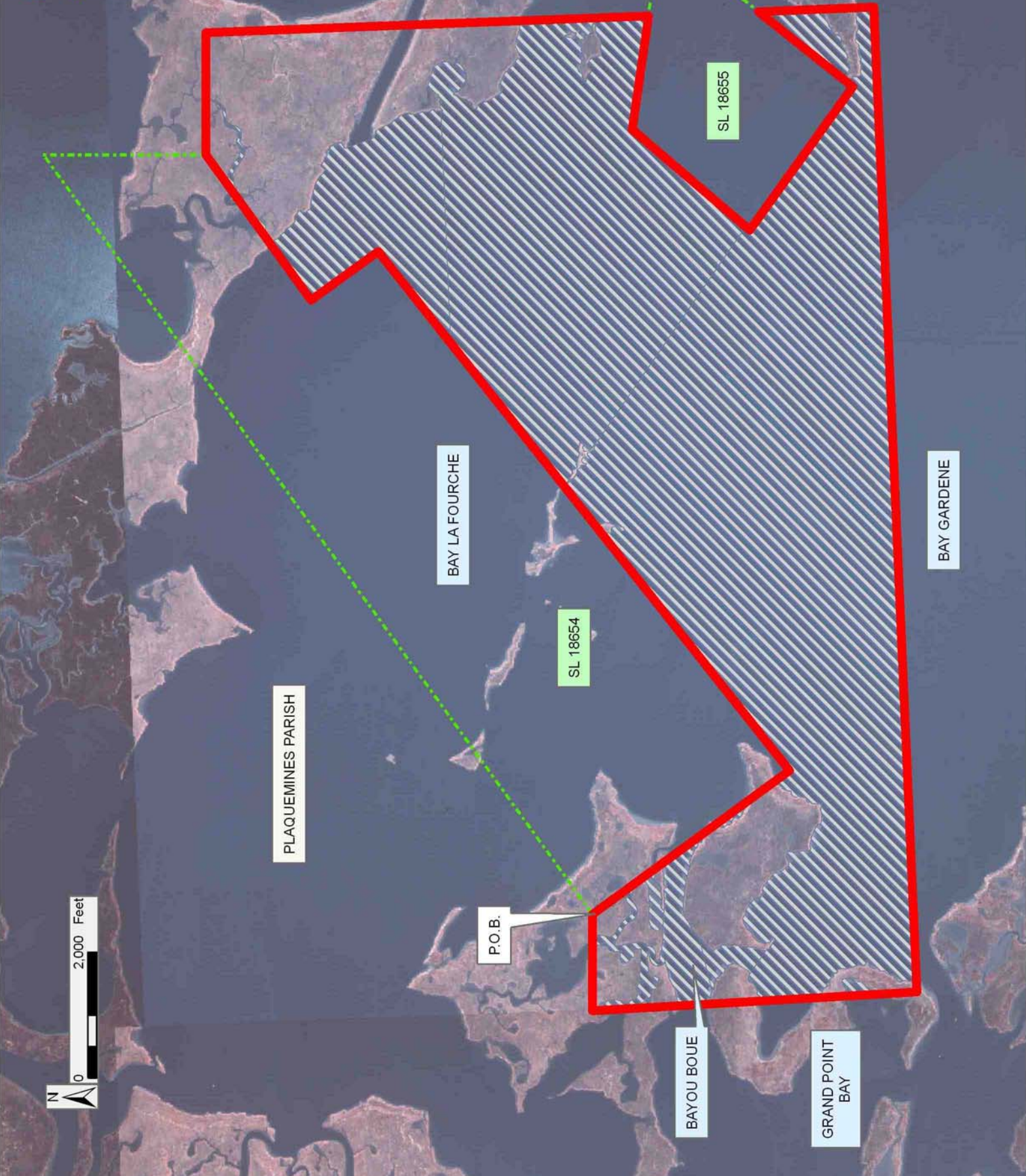
Bidder	Cash Payment	Price/Acre	Rental	Oil	Gas	Other



**Legend**

- 06110078
- 06110078water
- Active\_Leases

**DOQQ2004**



**TRACT 38678 - Plaquemines Parish, Louisiana**

All of the lands now or formerly constituting the beds and bottoms of all water bodies of every nature and description the title of which vests in the State of Louisiana, together with all islands arising therein and other lands formed by accretion or by reliction, where allowed by law, excepting tax adjudicated lands, and not presently under mineral lease and cross hatched on November 8, 2006, situated in Plaquemines Parish, Louisiana, and more particularly described as follows: Beginning at a point having Coordinates of X = 2,541,259.76 and Y = 345,068.15, said point being the easternmost point of State Lease No. 18655; Thence North 81 degrees 47 minutes 51 seconds West 1,330.11 feet along the northern boundary said State Lease No. 18655 to a point having Coordinates of X = 2,539,943.25 and Y = 345,257.92; Thence North 02 degrees 11 minutes 09 seconds West 3,359.69 feet to a point having Coordinates of X = 2,539,815.11 and Y = 348,615.17; Thence North 88 degrees 54 minutes 28 seconds East 10,435.00 feet to a point having Coordinates of X = 2,550,248.21 and Y = 348,814.08; Thence South 02 degrees 14 minutes 35 seconds East 6,692.09 feet to a point having Coordinates of X = 2,550,510.13 and Y = 342,127.12; Thence South 87 degrees 30 minutes 18 seconds West 10,435.00 feet to a point having Coordinates of X = 2,540,085.02 and Y = 341,672.84; Thence North 02 degrees 15 minutes 50 seconds West 1,834.54 feet to a point having Coordinates of X = 2,540,012.55 and Y = 343,505.95, said point being on a southeastern boundary of said State Lease No. 18655; Thence North 38 degrees 36 minutes 10 seconds East 1,999.00 feet along said southeastern boundary of said State Lease No. 18655 to the point of beginning, containing approximately **1,203 acres**, all as more particularly outlined on a plat on file in the Office of Mineral Resources, Department of Natural Resources. All bearings, distances and coordinates are based on Louisiana Coordinate System of 1927, (North or South Zone), where applicable.

NOTE: The above description of the Tract nominated for lease has been provided and corrected, where required, exclusively by the nomination party. Any mineral lease selected from this Tract and awarded by the Louisiana State Mineral Board shall be without warranty of any kind, either express, implied, or statutory, including, but not limited to, the implied warranties of merchantability and fitness for a particular purpose. Should the mineral lease awarded by the Louisiana State Mineral Board be subsequently modified, cancelled or abrogated due to the existence of conflicting leases, operating agreements, private claims or other future obligations or conditions which may affect all or any portion of the leased Tract, it shall not relieve the Lessee of the obligation to pay any bonus due thereon to the Louisiana State Mineral Board, nor shall the Louisiana State Mineral Board be obligated to refund any consideration paid by the Lessor prior to such modification, cancellation, or abrogation, including, but not limited to, bonuses, rentals and royalties.

NOTE: The State of Louisiana does hereby reserve, and this lease shall be subject to, the imprescriptible right of surface use in the nature of a

servitude in favor of the Department of Natural Resources, including its Offices and Commissions, for the sole purpose of implementing, constructing, servicing and maintaining approved coastal zone management and/or restoration projects. Utilization of any and all rights derived under this lease by the mineral lessee, its agents, successors or assigns, shall not interfere with nor hinder the reasonable surface use by the Department of Natural Resources, its Offices or Commissions, as herein above reserved.

NOTE: The Department of Wildlife and Fisheries has designated certain areas in the coastal waters of the State of Louisiana as Oyster Seed Bed Areas. The exact location of those Seed Bed Areas must be obtained from the Department of Wildlife and Fisheries and any work done under a mineral lease from the State of Louisiana may necessarily be conducted in conformity with the rules and regulations promulgated by the said Department of Wildlife and Fisheries for Oyster Seed Bed Areas.

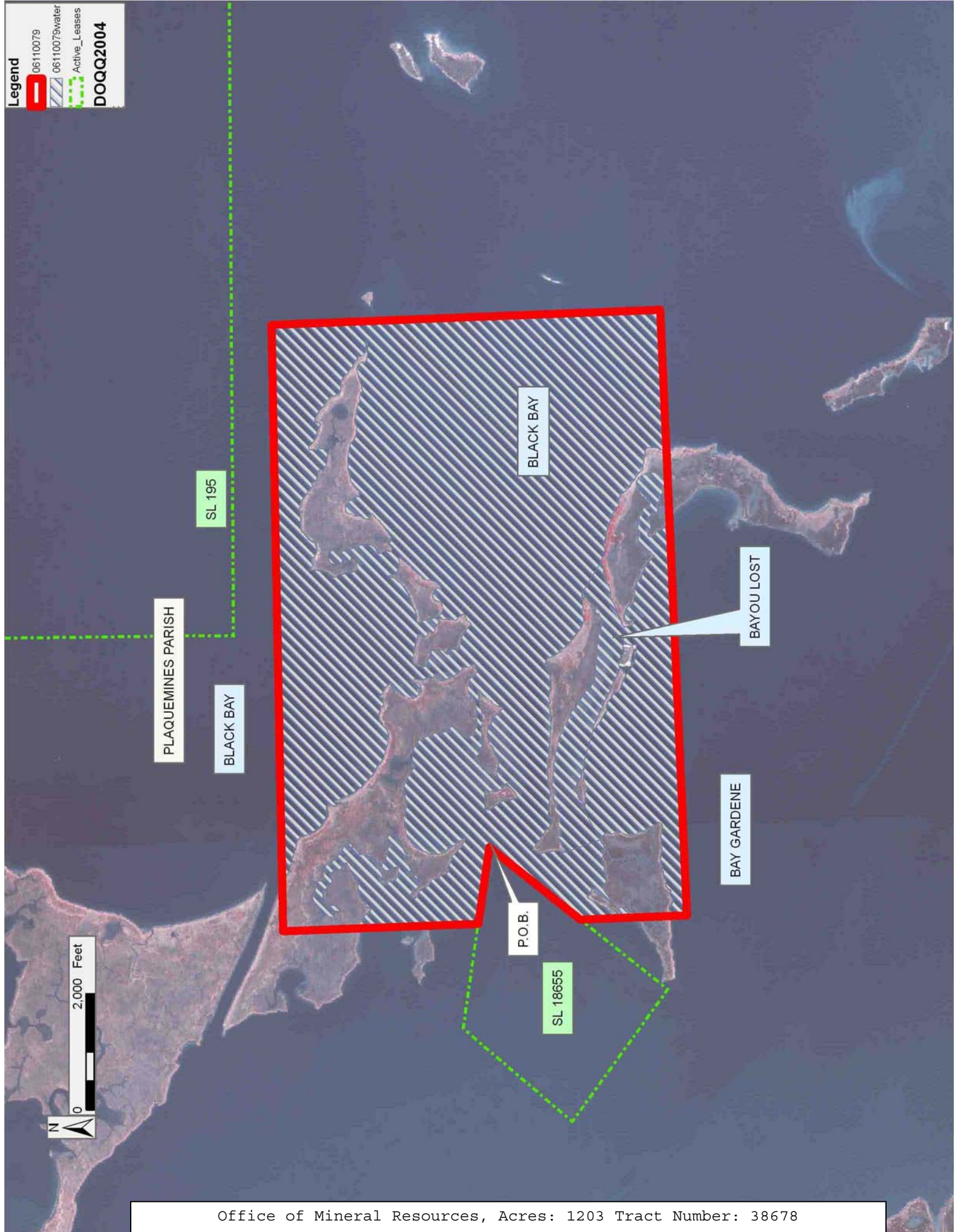
Applicant: ROBERT A. SCHROEDER, INC.

Bidder	Cash Payment	Price/Acre	Rental	Oil	Gas	Other

**Legend**

- 06110079
- 06110079water
- Active\_Leases

**DOQQ2004**



PLAQUEMINES PARISH

SL 195

BLACK BAY

BLACK BAY

BAYOU LOST

BAY GARDENE

P.O.B.

SL 18655



**TRACT 38679 - Terrebonne Parish, Louisiana**

All of the lands now or formerly constituting the beds and bottoms of all water bodies of every nature and description the title of which vests in the State of Louisiana, together with all islands arising therein and other lands formed by accretion or by reliction, where allowed by law, excepting tax adjudicated lands, and not presently under mineral lease and cross hatched on November 8, 2006, situated in Terrebonne Parish, Louisiana, and more particularly described as follows: Beginning at a point having Coordinates of X = 2,123,222.19 and Y = 353,883.34; thence South 82 degrees 00 minutes 00 seconds East 9,300.00 feet to a point having Coordinates of X = 2,132,431.68 and Y = 352,589.03; thence South 45 degrees 00 minutes 00 seconds West 4,000.00 feet to a point having Coordinates of X = 2,129,603.25 and Y = 349,760.60; thence North 82 degrees 00 minutes 00 seconds West 9,300.00 feet to a point having Coordinates of X = 2,120,393.76 and Y = 351,054.91; thence North 45 degrees 00 minutes 00 seconds East 4,000.00 feet to the Point of Beginning, containing approximately **22 acres**, all as more particularly outlined on a plat on file in the Office of Mineral Resources, Department of Natural Resources. All bearings, distances and coordinates are based on Louisiana Coordinate System of 1927, (North or South Zone), where applicable.

NOTE: The above description of the Tract nominated for lease has been provided and corrected, where required, exclusively by the nomination party. Any mineral lease selected from this Tract and awarded by the Louisiana State Mineral Board shall be without warranty of any kind, either express, implied, or statutory, including, but not limited to, the implied warranties of merchantability and fitness for a particular purpose. Should the mineral lease awarded by the Louisiana State Mineral Board be subsequently modified, cancelled or abrogated due to the existence of conflicting leases, operating agreements, private claims or other future obligations or conditions which may affect all or any portion of the leased Tract, it shall not relieve the Lessee of the obligation to pay any bonus due thereon to the Louisiana State Mineral Board, nor shall the Louisiana State Mineral Board be obligated to refund any consideration paid by the Lessor prior to such modification, cancellation, or abrogation, including, but not limited to, bonuses, rentals and royalties.

Bidder	Cash Payment	Price/Acre	Rental	Oil	Gas	Other

Applicant: ACL EXPLORATION, INC.

Legend

- 06110008
- 06110008water
- DOQQ2004



**TRACT 38680 - Plaquemines Parish, Louisiana**

All of the lands now or formerly constituting the beds and bottoms of all water bodies of every nature and description the title of which vests in the State of Louisiana, together with all islands arising therein and other lands formed by accretion or by reliction, where allowed by law, excepting tax adjudicated lands, and not presently under mineral lease and cross hatched on November 8, 2006, situated in Plaquemines Parish, Louisiana, and more particularly described as follows: Beginning at a point having Coordinates of X = 2,540,085.02 and Y = 341,672.84 Thence North 87 degrees 30 minutes 18 seconds East 10,435.00 feet to a point having Coordinates of X = 2,550,510.13 and Y = 342,127.12; Thence South 02 degrees 11 minutes 56 seconds East 10,434.92 feet to a point having Coordinates of X = 2,550,910.50 and Y = 331,699.89; Thence South 87 degrees 30 minutes 16 seconds West 10,435.00 feet to a point having Coordinates of X = 2,540,485.40 and Y = 331,245.51; Thence North 02 degrees 11 minutes 56 seconds West 10,435.02 feet to the point of beginning containing approximately **2,331 acres**, all as more particularly outlined on a plat on file in the Office of Mineral Resources, Department of Natural Resources. All bearings, distances and coordinates are based on Louisiana Coordinate System of 1927, (North or South Zone), where applicable.

NOTE: The above description of the Tract nominated for lease has been provided and corrected, where required, exclusively by the nomination party. Any mineral lease selected from this Tract and awarded by the Louisiana State Mineral Board shall be without warranty of any kind, either express, implied, or statutory, including, but not limited to, the implied warranties of merchantability and fitness for a particular purpose. Should the mineral lease awarded by the Louisiana State Mineral Board be subsequently modified, cancelled or abrogated due to the existence of conflicting leases, operating agreements, private claims or other future obligations or conditions which may affect all or any portion of the leased Tract, it shall not relieve the Lessee of the obligation to pay any bonus due thereon to the Louisiana State Mineral Board, nor shall the Louisiana State Mineral Board be obligated to refund any consideration paid by the Lessor prior to such modification, cancellation, or abrogation, including, but not limited to, bonuses, rentals and royalties.

NOTE: The State of Louisiana does hereby reserve, and this lease shall be subject to, the imprescriptible right of surface use in the nature of a servitude in favor of the Department of Natural Resources, including its Offices and Commissions, for the sole purpose of implementing, constructing, servicing and maintaining approved coastal zone management and/or restoration projects. Utilization of any and all rights derived under this lease by the mineral lessee, its agents, successors or assigns, shall not interfere with nor hinder the reasonable surface use by the Department of Natural Resources, its Offices or Commissions, as herein above reserved.



NOTE: The Department of Wildlife and Fisheries has designated certain areas in the coastal waters of the State of Louisiana as Oyster Seed Bed Areas. The exact location of those Seed Bed Areas must be obtained from the Department of Wildlife and Fisheries and any work done under a mineral lease from the State of Louisiana may necessarily be conducted in conformity with the rules and regulations promulgated by the said Department of Wildlife and Fisheries for Oyster Seed Bed Areas.

Applicant: ROBERT A. SCHROEDER, INC.

Bidder	Cash Payment	Price/Acre	Rental	Oil	Gas	Other

Legend

06110081



06110081water



DOQQ2004

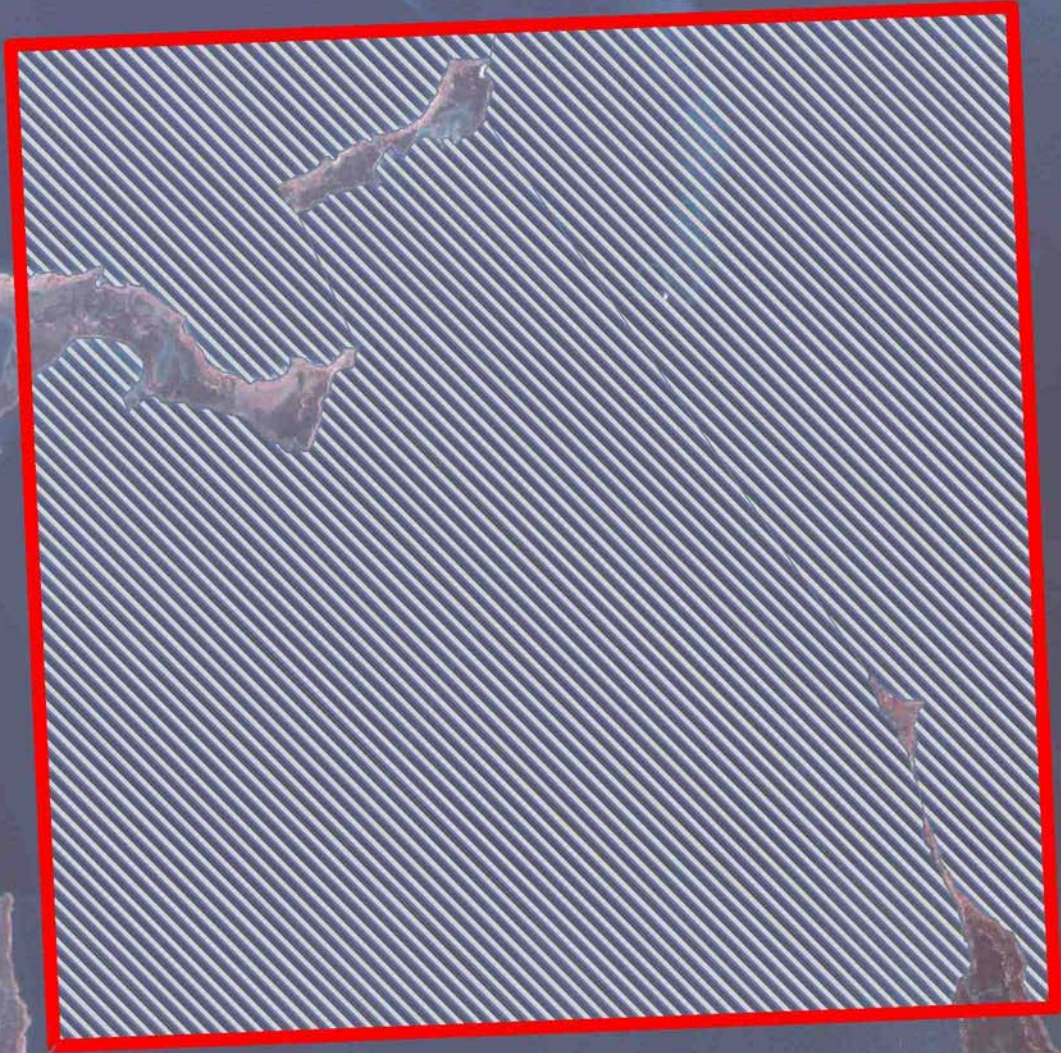
PLAQUEMINES PARISH

BLACK BAY

BAY CRABE

BAY GARDENE

P.O.B.



**TRACT 38681 - Plaquemines Parish, Louisiana**

All of the lands now or formerly constituting the beds and bottoms of all water bodies of every nature and description the title of which vests in the State of Louisiana, together with all islands arising therein and other lands formed by accretion or by reliction, where allowed by law, excepting tax adjudicated lands, and not presently under mineral lease and cross hatched on November 8, 2006, situated in Plaquemines Parish, Louisiana, and more particularly described as follows: Beginning at a point having Coordinates of X = 2,540,085.02 and Y = 341,672.84; thence South 02 degrees 11 minutes 56 seconds East 10,435.02 feet to a point having Coordinates of X = 2,540,485.40 and Y = 331,245.51; thence South 87 degrees 30 minutes 16 seconds West 10,544.57 feet to a point having Coordinates of X = 2,529,950.83 and Y = 330,786.35; thence North 02 degrees 23 minutes 05 seconds West 10,435.00 feet to a point having Coordinates of X = 2,529,516.61 and Y = 341,212.32; thence North 87 degrees 30 minutes 18 seconds East 10,578.44 feet to the point of beginning, **LESS AND EXCEPT** all that portion thereof affected by State Lease No. 18657, being more particularly described as follows: Beginning at a point having Coordinates of X = 2,531,992.00 and Y = 335,474.00; thence North 46 degrees 16 minutes 09 seconds West 750.47 feet to a point having Coordinates of X = 2,531,449.72 and Y = 335,992.78; thence North 01 degrees 28 minutes 46 seconds East 3,690.45 feet to a point having Coordinates of X = 2,531,545.00 and Y = 339,682.00; thence South 88 degrees 44 minutes 24 seconds East 4,298.11 feet to a point having Coordinates of X = 2,535,842.07 and Y = 339,587.50; thence South 43 degrees 06 minutes 20 seconds West 5,634.17 feet to the point of beginning, the nominated tract contains approximately **1,952 acres**, all as more particularly outlined on a plat on file in the Office of Mineral Resources, Department of Natural Resources. All bearings, distances and coordinates are based on Louisiana Coordinate System of 1927, (North or South Zone), where applicable.

NOTE: The above description of the Tract nominated for lease has been provided and corrected, where required, exclusively by the nomination party. Any mineral lease selected from this Tract and awarded by the Louisiana State Mineral Board shall be without warranty of any kind, either express, implied, or statutory, including, but not limited to, the implied warranties of merchantability and fitness for a particular purpose. Should the mineral lease awarded by the Louisiana State Mineral Board be subsequently modified, cancelled or abrogated due to the existence of conflicting leases, operating agreements, private claims or other future obligations or conditions which may affect all or any portion of the leased Tract, it shall not relieve the Lessee of the obligation to pay any bonus due thereon to the Louisiana State Mineral Board, nor shall the Louisiana State Mineral Board be obligated to refund any consideration paid by the Lessor prior to such modification, cancellation, or abrogation, including, but not limited to, bonuses, rentals and royalties.

NOTE: The State of Louisiana does hereby reserve, and this lease shall be subject to, the imprescriptible right of surface use in the nature of a servitude in favor of the Department of Natural Resources, including its Offices and Commissions, for the sole purpose of implementing, constructing, servicing and maintaining approved coastal zone management and/or restoration projects. Utilization of any and all rights derived under this lease by the mineral lessee, its agents, successors or assigns, shall not interfere with nor hinder the reasonable surface use by the Department of Natural Resources, its Offices or Commissions, as herein above reserved.

NOTE: The Department of Wildlife and Fisheries has designated certain areas in the coastal waters of the State of Louisiana as Oyster Seed Bed Areas. The exact location of those Seed Bed Areas must be obtained from the Department of Wildlife and Fisheries and any work done under a mineral lease from the State of Louisiana may necessarily be conducted in conformity with the rules and regulations promulgated by the said Department of Wildlife and Fisheries for Oyster Seed Bed Areas.

Applicant: ROBERT A. SCHROEDER, INC.

Bidder	Cash Payment	Price/Acre	Rental	Oil	Gas	Other

**Legend**

- 06110080
- 061100802water
- Active\_Leases

**DOQQ2004**



**TRACT 38682 - Cameron and Vermilion Parishes, Louisiana**

All of the lands now or formerly constituting the beds and bottoms of all water bodies of every nature and description the title of which vests in the State of Louisiana, together with all islands arising therein and other lands formed by accretion or by reliction, where allowed by law, excepting tax adjudicated lands, and not presently under mineral lease and cross hatched on November 8, 2006, situated in Cameron and Vermilion Parishes, Louisiana, and more particularly described as follows: Beginning at a point on the Louisiana Coastline having Coordinates of X = 1,595,210.00 and Y = 333,090.00; Thence along said Louisiana Coastline the following courses: North 67 degrees 45 minutes 04 seconds West 475.39 feet to a point having Coordinates of X = 1,594,770.00 and Y = 333,270.00, North 88 degrees 21 minutes 06 seconds West 695.29 feet to a point having Coordinates of X = 1,594,075.00 and Y = 333,290.00, North 24 degrees 55 minutes 43 seconds West 391.47 feet to a point having Coordinates of X = 1,593,910.00 and Y = 333,645.00, South 82 degrees 05 minutes 34 seconds West 908.64 feet to a point having Coordinates of X = 1,593,010.00 and Y = 333,520.00, North 78 degrees 41 minutes 24 seconds West 1,351.24 feet to a point having Coordinates of X = 1,591,685.00 and Y = 333,785.00, North 71 degrees 36 minutes 13 seconds West 2,344.83 feet to a point having Coordinates of X = 1,589,460.00 and Y = 334,525.00, North 75 degrees 27 minutes 43 seconds West 2,768.65 feet to a point having Coordinates of X = 1,586,780.00 and Y = 335,220.00, and Northwesterly approximately 1,534 feet to a point having an X Coordinate of X = 1,585,309.71; Thence leaving said Louisiana Coastline North approximately 4,504.00 feet to a point on the present day shoreline of the Gulf of Mexico having an X Coordinate of X = 1,585,309.71; Thence along said present day shoreline southeasterly approximately 14,208.12 feet to a point having an X coordinate of X = 1,596,555.78; Thence leaving said present day shoreline South approximately 2,244 feet to a point on the Louisiana Coastline having an X Coordinate of X = 1,596,555.78; Thence along said Louisiana Coastline Northwesterly approximately 1362 feet to the point of beginning, containing approximately **813 acres**, all as more particularly outlined on a plat on file in the Office of Mineral Resources, Department of Natural Resources. All bearings, distances and coordinates are based on Louisiana Coordinate System of 1927, (North or South Zone), where applicable.

NOTE: The above description of the Tract nominated for lease has been provided and corrected, where required, exclusively by the nomination party. Any mineral lease selected from this Tract and awarded by the Louisiana State Mineral Board shall be without warranty of any kind, either express, implied, or statutory, including, but not limited to, the implied warranties of merchantability and fitness for a particular purpose. Should the mineral lease awarded by the Louisiana State Mineral Board be subsequently modified, cancelled or abrogated due to the existence of conflicting leases, operating agreements, private claims or other future obligations or conditions which may affect all or any portion of the leased Tract, it shall not relieve the Lessee of the obligation to pay any bonus due thereon to the Louisiana State Mineral Board, nor shall

the Louisiana State Mineral Board be obligated to refund any consideration paid by the Lessor prior to such modification, cancellation, or abrogation, including, but not limited to, bonuses, rentals and royalties.

NOTE: The State of Louisiana does hereby reserve, and this lease shall be subject to, the imprescriptible right of surface use in the nature of a servitude in favor of the Department of Natural Resources, including its Offices and Commissions, for the sole purpose of implementing, constructing, servicing and maintaining approved coastal zone management and/or restoration projects. Utilization of any and all rights derived under this lease by the mineral lessee, its agents, successors or assigns, shall not interfere with nor hinder the reasonable surface use by the Department of Natural Resources, its Offices or Commissions, as herein above reserved.

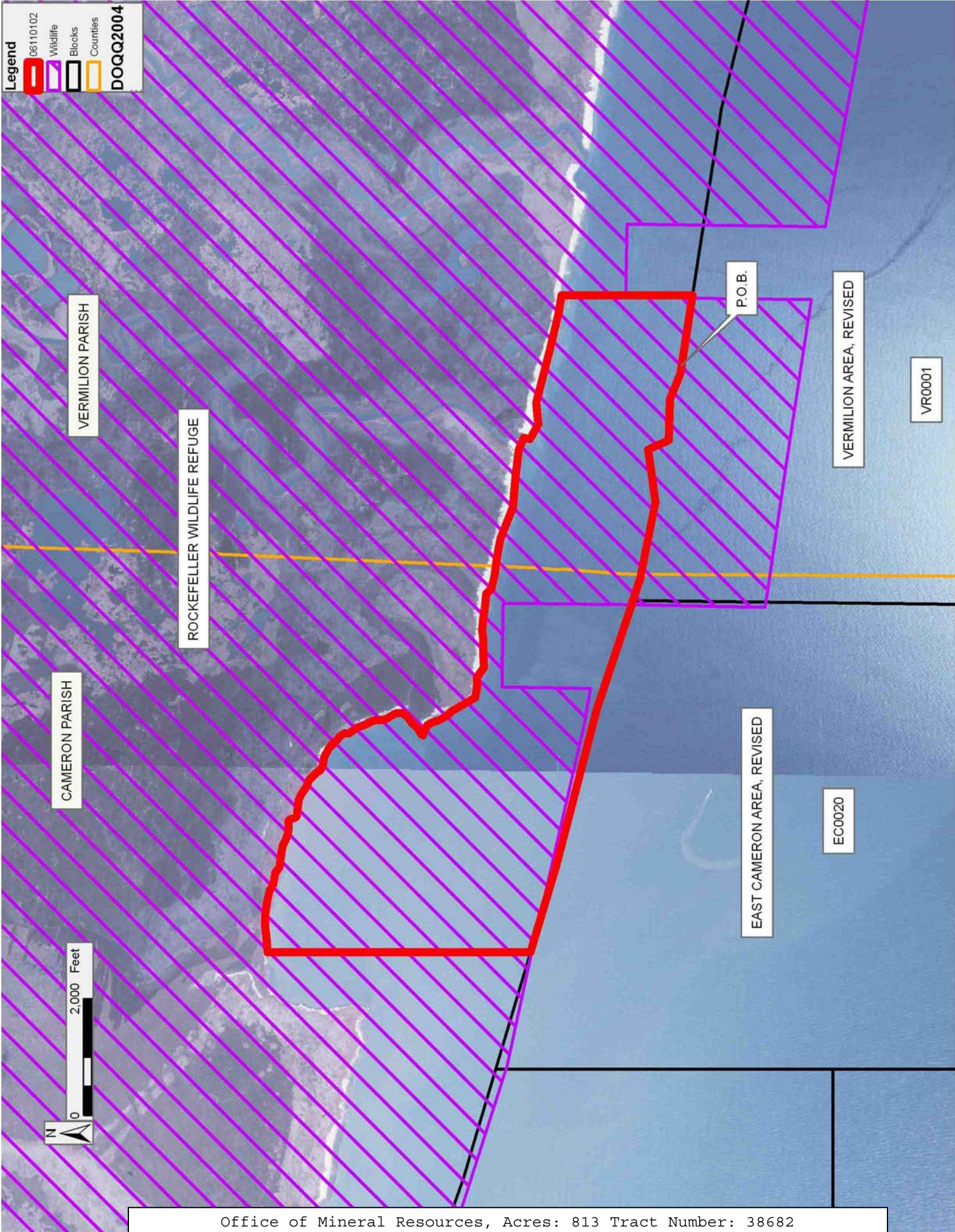
Applicant: GHJ LAND SERVICES, L.L.C.

Bidder	Cash Payment	Price/Acre	Rental	Oil	Gas	Other

**Legend**

-  06110102
-  Wildlife
-  Blocks
-  Counties

**DOQQ2004**



VERMILION PARISH

ROCKEFELLER WILDLIFE REFUGE

CAMERON PARISH

EAST CAMERON AREA, REVISED

VERMILION AREA, REVISED

P.O.B.

VR0001

EC0020





**TRACT 38683 - Portion of Block 34, Breton Sound Area, Plaquemines Parish, Louisiana**

All of the lands now or formerly constituting the beds and bottoms of all water bodies of every nature and description the title of which vests in the State of Louisiana, together with all islands arising therein and other lands formed by accretion or by reliction, where allowed by law, excepting tax adjudicated lands, and not presently under mineral lease and cross hatched on November 8, 2006, situated in Plaquemines Parish, Louisiana, and more particularly described as follows: Beginning at the Northwest corner of Block 34, Breton Sound Area, having Coordinates of X = 2,650,100.00 and Y = 322,330.00; thence East 996.66 feet to the Northwest corner of State Lease No. 4458 having Coordinates of X = 2,651,096.66 and Y = 322,330.00; thence along the boundary of said State Lease No. 4458 the following courses: South 00 degrees 02 minutes 21 seconds East 3,000.00 feet and East 2,101.29 feet to the Northwest corner of State Lease No. 17963 having Coordinates of X = 2,653,200.00 and Y = 319,330.00; thence South 2,114.46 feet along the Western boundary line of said State Lease No. 17963, to its Southwest corner, also being a point on the Northern boundary line of State Lease No. 14217, as amended, having Coordinates of X = 2,653,200.00 and Y = 317,215.54; thence West 3,100.00 feet to a point on the Western boundary line of said Block 34, also being the Northwest corner of said State Lease No. 14217, having Coordinates of X = 2,650,100.00 and Y = 317,215.54; thence North 5,114.46 feet along the Western boundary line of said Block 34 to the point of beginning, containing approximately **219.19 acres**, all as more particularly outlined on a plat on file in the Office of Mineral Resources, Department of Natural Resources. All bearings, distances and coordinates are based on Louisiana Coordinate System of 1927, (North or South Zone), where applicable.

NOTE: The above description of the Tract nominated for lease has been provided and corrected, where required, exclusively by the nomination party. Any mineral lease selected from this Tract and awarded by the Louisiana State Mineral Board shall be without warranty of any kind, either express, implied, or statutory, including, but not limited to, the implied warranties of merchantability and fitness for a particular purpose. Should the mineral lease awarded by the Louisiana State Mineral Board be subsequently modified, cancelled or abrogated due to the existence of conflicting leases, operating agreements, private claims or other future obligations or conditions which may affect all or any portion of the leased Tract, it shall not relieve the Lessee of the obligation to pay any bonus due thereon to the Louisiana State Mineral Board, nor shall the Louisiana State Mineral Board be obligated to refund any consideration paid by the Lessor prior to such modification, cancellation, or abrogation, including, but not limited to, bonuses, rentals and royalties.

NOTE: The State of Louisiana does hereby reserve, and this lease shall be subject to, the imprescriptible right of surface use in the nature of a servitude in favor of the Department of Natural Resources, including its

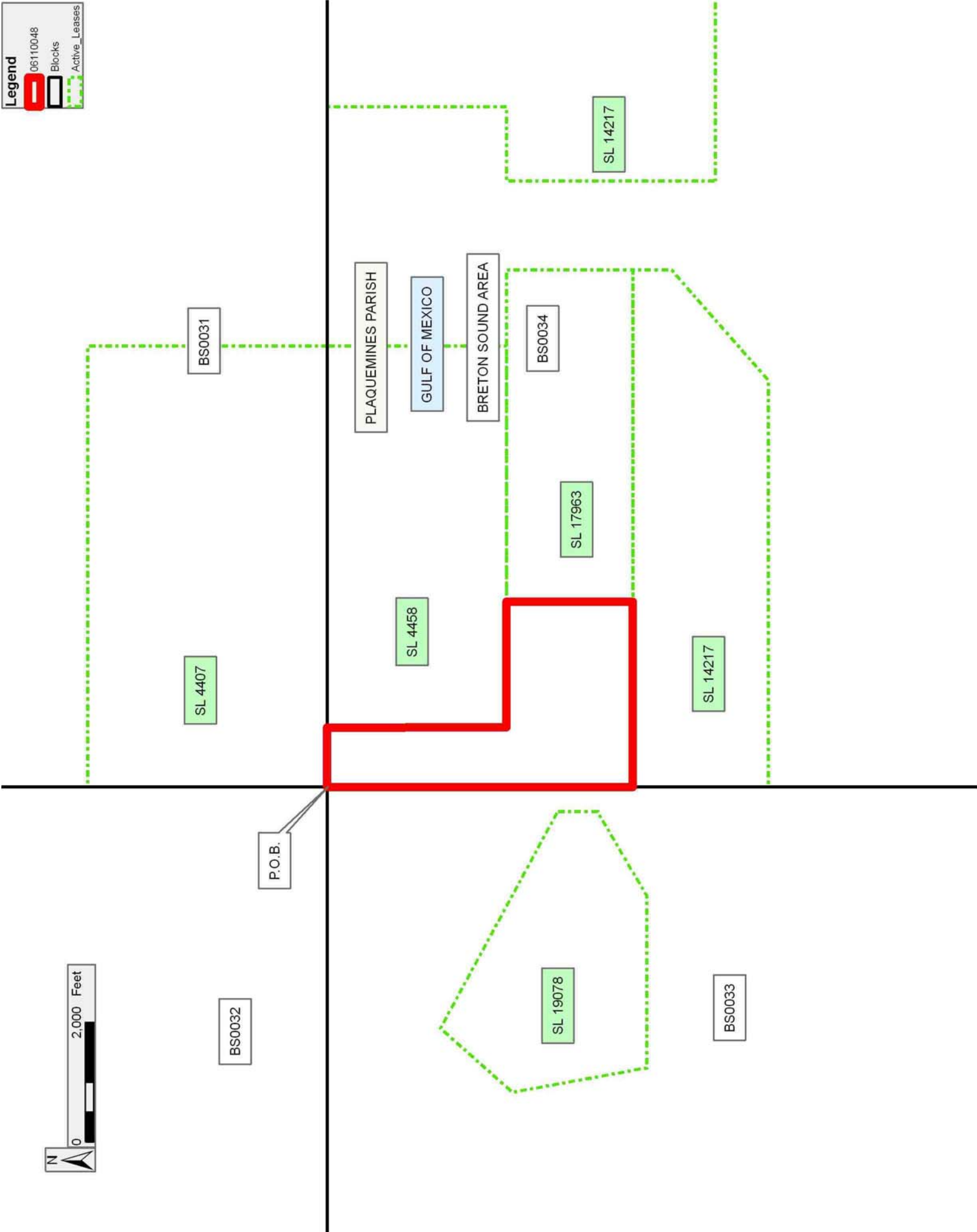
Offices and Commissions, for the sole purpose of implementing, constructing, servicing and maintaining approved coastal zone management and/or restoration projects. Utilization of any and all rights derived under this lease by the mineral lessee, its agents, successors or assigns, shall not interfere with nor hinder the reasonable surface use by the Department of Natural Resources, its Offices or Commissions, as herein above reserved.

Applicant: HAROLD J. ANDERSON, INC.

Bidder	Cash Payment	Price/Acre	Rental	Oil	Gas	Other

**Legend**

- 06110048
- Blocks
- Active\_Leases



**TRACT 38684 - Portion of Block 35, Breton Sound Area, Plaquemines Parish, Louisiana**

All of the lands now or formerly constituting the beds and bottoms of all water bodies of every nature and description the title of which vests in the State of Louisiana, together with all islands arising therein and other lands formed by accretion or by reliction, where allowed by law, excepting tax adjudicated lands, and not presently under mineral lease and cross hatched on November 8, 2006, situated in Plaquemines Parish, Louisiana, and more particularly described as follows: Beginning at a point on the North line of Block 35, Breton Sound Area, also being the most Northern Northeast corner of State Lease No. 14561 having Coordinates of X = 2,669,940.00 and Y = 322,330.00; thence East 9,660.00 feet along the North line of said Block 35, to its Northeast corner, having Coordinates of X = 2,679,600.00 and Y = 322,330.00; thence South 14,750.00 feet along the East line of said Block 35, to its Southeast corner, having Coordinates of X = 2,679,600.00 and Y = 307,580.00; thence West 6,750.00 feet along the South line of said Block 35 to the most Southern Southwest corner of State Lease No. 18340 having Coordinates of X = 2,672,850.00 and Y = 307,580.00; thence along the boundary of said State Lease No. 18340 the following courses: North 57 degrees 31 minutes 44 seconds East 3,259.60 feet, North 3,250.00 feet and North 55 degrees 50 minutes 25 seconds West 4,229.73 feet to its most Northern Northeast corner, also being the Southeast corner of State Lease No. 14561 having Coordinates of X = 2,672,100.00 and Y = 314,955.00; thence along the boundary of said State Lease No. 14561 the following courses: North 6,055.00 feet, West 2,160.00 feet and North 1,320.00 feet to the point of beginning, containing approximately **2,163.14 acres**, all as more particularly outlined on a plat on file in the Office of Mineral Resources, Department of Natural Resources. All bearings, distances and coordinates are based on Louisiana Coordinate System of 1927, (North or South Zone), where applicable.

NOTE: The above description of the Tract nominated for lease has been provided and corrected, where required, exclusively by the nomination party. Any mineral lease selected from this Tract and awarded by the Louisiana State Mineral Board shall be without warranty of any kind, either express, implied, or statutory, including, but not limited to, the implied warranties of merchantability and fitness for a particular purpose. Should the mineral lease awarded by the Louisiana State Mineral Board be subsequently modified, cancelled or abrogated due to the existence of conflicting leases, operating agreements, private claims or other future obligations or conditions which may affect all or any portion of the leased Tract, it shall not relieve the Lessee of the obligation to pay any bonus due thereon to the Louisiana State Mineral Board, nor shall the Louisiana State Mineral Board be obligated to refund any consideration paid by the Lessor prior to such modification, cancellation, or abrogation, including, but not limited to, bonuses, rentals and royalties.

NOTE: The State of Louisiana does hereby reserve, and this lease shall be subject to, the imprescriptible right of surface use in the nature of a servitude in favor of the Department of Natural Resources, including its Offices and Commissions, for the sole purpose of implementing, constructing, servicing and maintaining approved coastal zone management and/or restoration projects. Utilization of any and all rights derived under this lease by the mineral lessee, its agents, successors or assigns, shall not interfere with nor hinder the reasonable surface use by the Department of Natural Resources, its Offices or Commissions, as herein above reserved.

NOTE: It appears, according to our records, that a portion of this Tract is located within the restrictive safety fairway area as set out by the Corps of Engineers, U.S. Army and/or the restrictive anchorage area as set out by the U.S. Coast Guard.

Applicant: HAROLD J. ANDERSON, INC.

Bidder	Cash Payment	Price/Acre	Rental	Oil	Gas	Other

**Legend**

- 06110049
- Active\_Leases
- Blocks

