

TRACT 38665 - Allen and Beauregard Parishes, Louisiana

All of the lands now or formerly constituting the beds and bottoms of all water bodies of every nature and description the title of which vests in the State of Louisiana, together with all islands arising therein and other lands formed by accretion or by reliction, where allowed by law, excepting tax adjudicated lands, and not presently under mineral lease and cross hatched on November 8, 2006, situated in Allen and Beauregard Parishes, Louisiana, and more particularly described as follows: Beginning at a point having Coordinates of X = 1,423,325.00 and Y = 683,340.00; thence East 10,825.00 feet to a point having Coordinates of X = 1,434,150.00 and Y = 683,340.00; thence South 10,520.00 feet to a point having Coordinates of X = 1,434,150.00 and Y = 672,820.00; thence West 5,560.00 feet to a point having Coordinates of X = 1,428,590.00 and Y = 672,820.00; thence North 5,330.00 feet to a point having Coordinates of X = 1,428,590.00 and Y = 678,150.00; thence West 5,265.00 feet to a point having Coordinates of X = 1,423,325.00 and Y = 678,150.00; thence North 5,190.00 feet to the point of beginning, containing approximately **50 acres**, all as more particularly outlined on a plat on file in the Office of Mineral Resources, Department of Natural Resources. All bearings, distances and coordinates are based on Louisiana Coordinate System of 1927, (North or South Zone), where applicable.

NOTE: The above description of the Tract nominated for lease has been provided and corrected, where required, exclusively by the nomination party. Any mineral lease selected from this Tract and awarded by the Louisiana State Mineral Board shall be without warranty of any kind, either express, implied, or statutory, including, but not limited to, the implied warranties of merchantability and fitness for a particular purpose. Should the mineral lease awarded by the Louisiana State Mineral Board be subsequently modified, cancelled or abrogated due to the existence of conflicting leases, operating agreements, private claims or other future obligations or conditions which may affect all or any portion of the leased Tract, it shall not relieve the Lessee of the obligation to pay any bonus due thereon to the Louisiana State Mineral Board, nor shall the Louisiana State Mineral Board be obligated to refund any consideration paid by the Lessor prior to such modification, cancellation, or abrogation, including, but not limited to, bonuses, rentals and royalties.

Applicant: THEOPHILUS OIL, GAS & LAND SERVICES, LLC

Bidder	Cash Payment	Price/Acre	Rental	Oil	Gas	Other

Legend

- 06110075
- 06110075water
- Counties
- DOQQ2004**

ALLEN PARISH

T6S - R7W

BEAUREGARD PARISH

T6S - R8W

RIGHT HAND CREEK

BARNES CREEK

P.O.B.



TRACT 38666 - Allen Parish, Louisiana

All of the lands now or formerly constituting the beds and bottoms of all water bodies of every nature and description the title of which vests in the State of Louisiana, together with all islands arising therein and other lands formed by accretion or by reliction, where allowed by law, excepting tax adjudicated lands, and not presently under mineral lease and cross hatched on November 8, 2006, situated in Allen Parish, Louisiana, and more particularly described as follows: Beginning at a point having Coordinates of X = 1,434,150.00 and Y = 674,543.68; thence East 5,560.00 feet to a point having Coordinates of X = 1,439,710.00 and Y = 674,543.68; thence South 10,000.00 feet to a point having Coordinates of X = 1,439,710.00 and Y = 664,543.68; thence West 5,560.00 feet to a point having Coordinates of X = 1,434,150.00 and Y = 664,543.68; thence North 10,000.00 feet to the point of beginning, containing approximately **18 acres**, all as more particularly outlined on a plat on file in the Office of Mineral Resources, Department of Natural Resources. All bearings, distances and coordinates are based on Louisiana Coordinate System of 1927, (North or South Zone), where applicable.

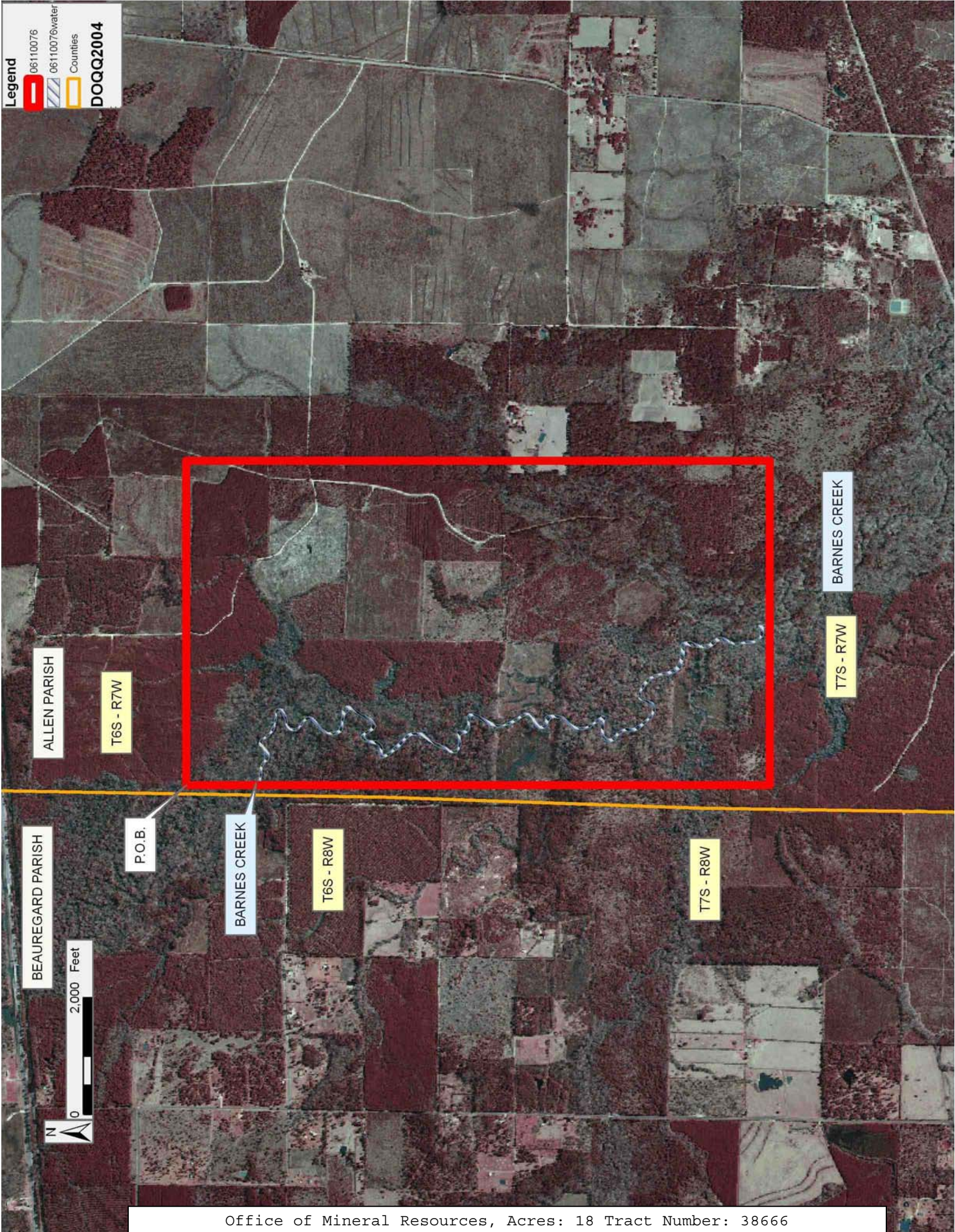
NOTE: The above description of the Tract nominated for lease has been provided and corrected, where required, exclusively by the nomination party. Any mineral lease selected from this Tract and awarded by the Louisiana State Mineral Board shall be without warranty of any kind, either express, implied, or statutory, including, but not limited to, the implied warranties of merchantability and fitness for a particular purpose. Should the mineral lease awarded by the Louisiana State Mineral Board be subsequently modified, cancelled or abrogated due to the existence of conflicting leases, operating agreements, private claims or other future obligations or conditions which may affect all or any portion of the leased Tract, it shall not relieve the Lessee of the obligation to pay any bonus due thereon to the Louisiana State Mineral Board, nor shall the Louisiana State Mineral Board be obligated to refund any consideration paid by the Lessor prior to such modification, cancellation, or abrogation, including, but not limited to, bonuses, rentals and royalties.

Applicant: THEOPHILUS OIL, GAS & LAND SERVICES, LLC

Bidder	Cash Payment	Price/Acre	Rental	Oil	Gas	Other

Legend

- 06110076
- 06110076water
- Counties
- DOQQ2004



TRACT 38667 - Acadia and Vermilion Parishes, Louisiana

All of the lands now or formerly constituting the beds and bottoms of all water bodies of every nature and description the title of which vests in the State of Louisiana, together with all islands arising therein and other lands formed by accretion or by reliction, where allowed by law, excepting tax adjudicated lands, and not presently under mineral lease and cross hatched on November 8, 2006, situated in Acadia and Vermilion Parishes, Louisiana, and more particularly described as follows: Beginning at a point having Coordinates of X = 1,606,000.00 and Y = 525,600.00; thence South 4,200.00 feet to a point having Coordinates of X = 1,606,000.00 and Y = 521,400.00; thence West 4,000.00 feet to a point having Coordinates of X = 1,602,000.00 and Y = 521,400.00; thence North 4,200.00 feet to a point having Coordinates of X = 1,602,000.00 and Y = 525,600.00; thence East 4,000.00 feet to the Point of Beginning, containing approximately **21 acres**, all as more particularly outlined on a plat on file in the Office of Mineral Resources, Department of Natural Resources. All bearings, distances and coordinates are based on Louisiana Coordinate System of 1927, (North or South Zone), where applicable.

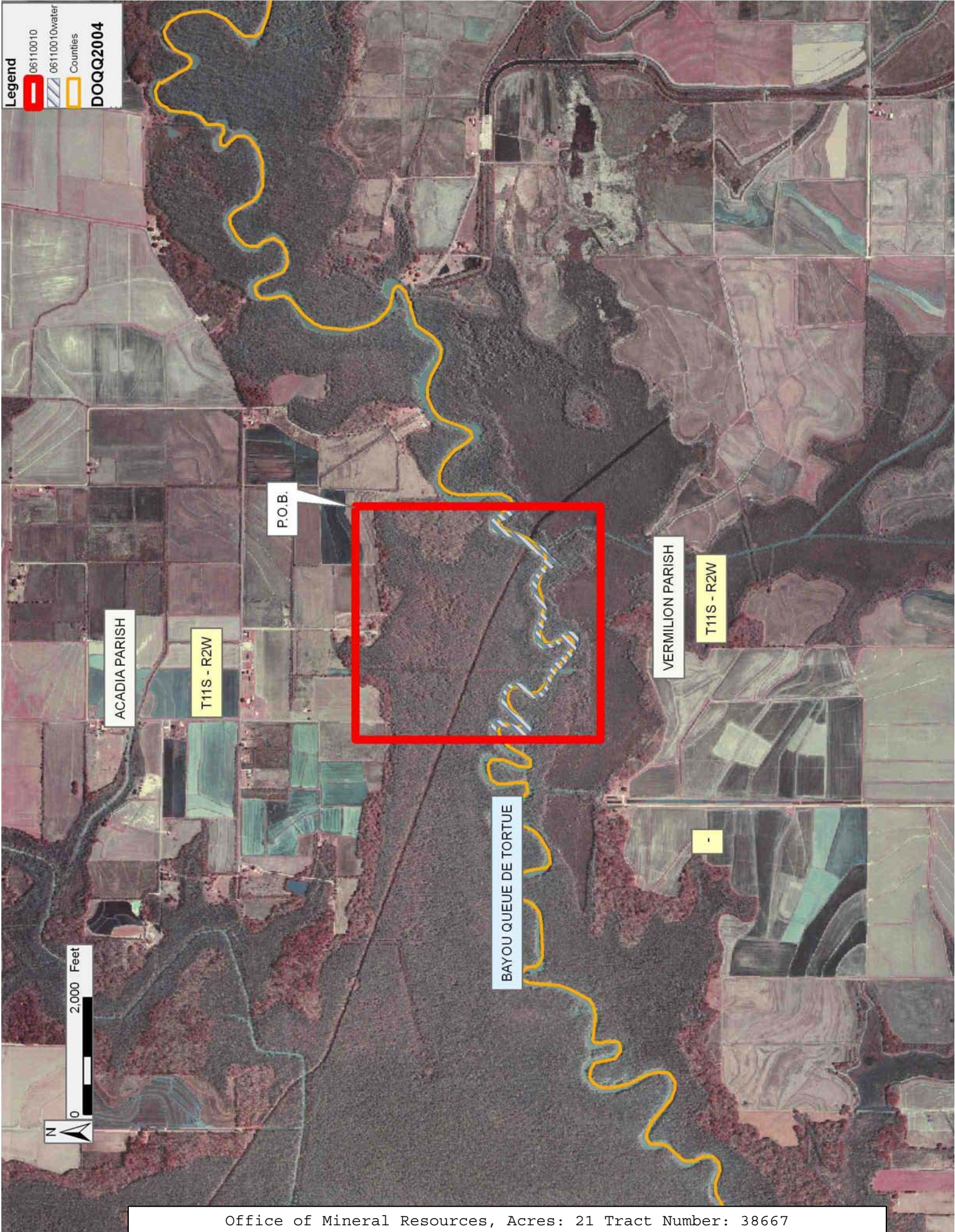
NOTE: The above description of the Tract nominated for lease has been provided and corrected, where required, exclusively by the nomination party. Any mineral lease selected from this Tract and awarded by the Louisiana State Mineral Board shall be without warranty of any kind, either express, implied, or statutory, including, but not limited to, the implied warranties of merchantability and fitness for a particular purpose. Should the mineral lease awarded by the Louisiana State Mineral Board be subsequently modified, cancelled or abrogated due to the existence of conflicting leases, operating agreements, private claims or other future obligations or conditions which may affect all or any portion of the leased Tract, it shall not relieve the Lessee of the obligation to pay any bonus due thereon to the Louisiana State Mineral Board, nor shall the Louisiana State Mineral Board be obligated to refund any consideration paid by the Lessor prior to such modification, cancellation, or abrogation, including, but not limited to, bonuses, rentals and royalties.

Applicant: ACL EXPLORATION, INC.

Bidder	Cash Payment	Price/Acre	Rental	Oil	Gas	Other

Legend

- 06110010
- 06110010water
- Counties
- DOQQ2004



TRACT 38668 - Acadia and Vermilion Parishes, Louisiana

All of the lands now or formerly constituting the beds and bottoms of all water bodies of every nature and description the title of which vests in the State of Louisiana, together with all islands arising therein and other lands formed by accretion or by reliction, where allowed by law, excepting tax adjudicated lands, and not presently under mineral lease and cross hatched on November 8, 2006, situated in Acadia and Vermilion Parishes, Louisiana, and more particularly described as follows: Beginning at a point having Coordinates of X = 1,606,000.00 and Y = 525,600.00; thence East 4,000.00 feet to a point having Coordinates of X = 1,610,000.00 and Y = 525,600.00; thence South 4,200.00 feet to a point having Coordinates of X = 1,610,000.00 and Y = 521,400.00; thence West 4,000.00 feet to a point having Coordinates of X = 1,606,000.00 and Y = 521,400.00; thence North 4,200.00 feet to the Point of Beginning, containing approximately **22 acres**, all as more particularly outlined on a plat on file in the Office of Mineral Resources, Department of Natural Resources. All bearings, distances and coordinates are based on Louisiana Coordinate System of 1927, (North or South Zone), where applicable.

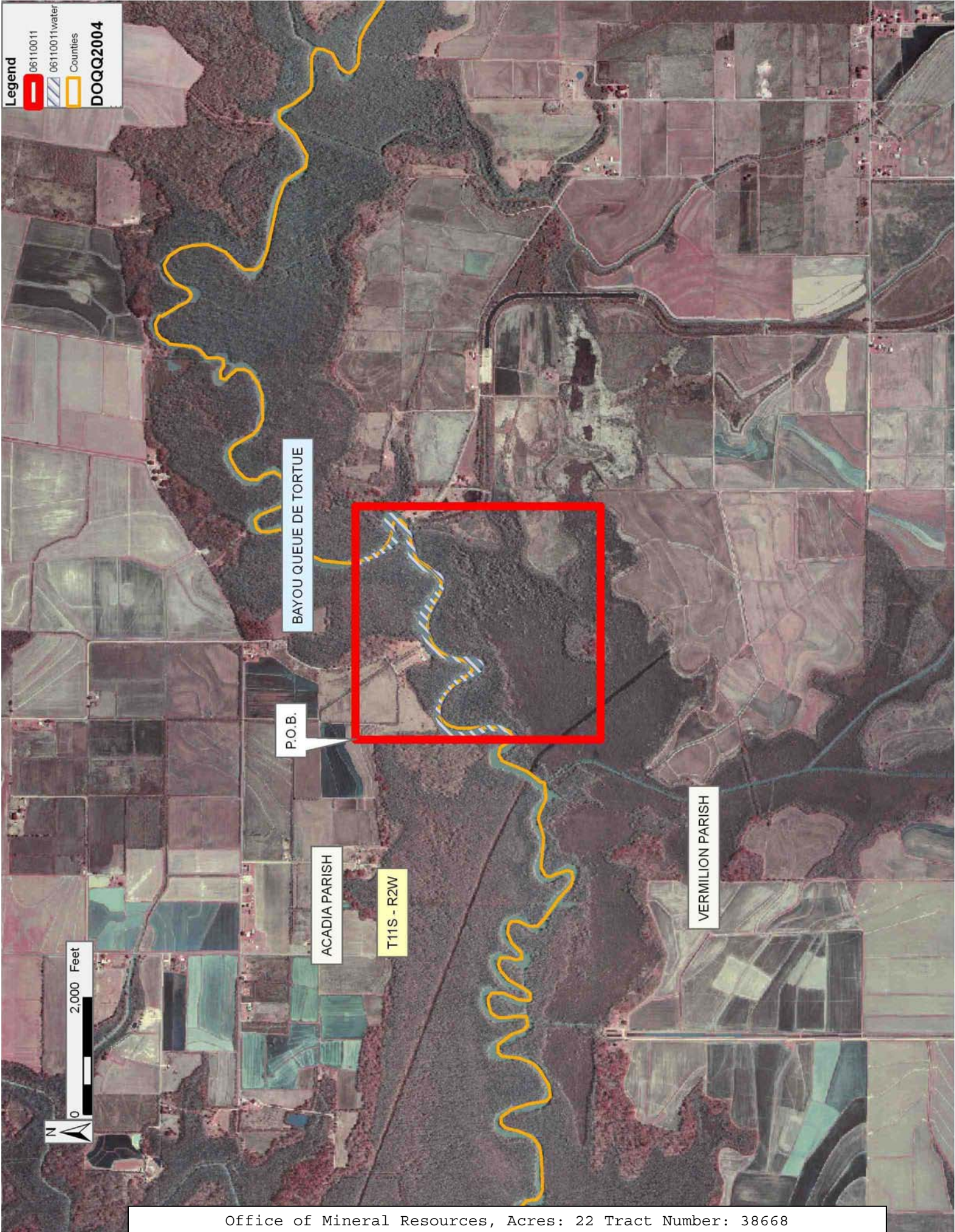
NOTE: The above description of the Tract nominated for lease has been provided and corrected, where required, exclusively by the nomination party. Any mineral lease selected from this Tract and awarded by the Louisiana State Mineral Board shall be without warranty of any kind, either express, implied, or statutory, including, but not limited to, the implied warranties of merchantability and fitness for a particular purpose. Should the mineral lease awarded by the Louisiana State Mineral Board be subsequently modified, cancelled or abrogated due to the existence of conflicting leases, operating agreements, private claims or other future obligations or conditions which may affect all or any portion of the leased Tract, it shall not relieve the Lessee of the obligation to pay any bonus due thereon to the Louisiana State Mineral Board, nor shall the Louisiana State Mineral Board be obligated to refund any consideration paid by the Lessor prior to such modification, cancellation, or abrogation, including, but not limited to, bonuses, rentals and royalties.

Applicant: ACL EXPLORATION, INC.

Bidder	Cash Payment	Price/Acre	Rental	Oil	Gas	Other

Legend

- 06110011
- 06110011|water
- Counties
- DOQQ2004



BAYOU QUEUE DE TORTUE

P.O.B.

ACADIA PARISH

T11S - R2W

VERMILION PARISH

2,000 Feet

TRACT 38669 - Assumption Parish, Louisiana

All of the lands now or formerly constituting the beds and bottoms of all water bodies of every nature and description the title of which vests in the State of Louisiana, together with all islands arising therein and other lands formed by accretion or by reliction, where allowed by law, excepting tax adjudicated lands, and not presently under mineral lease and cross hatched on November 8, 2006, situated in Assumption Parish, Louisiana, and more particularly described as follows: Beginning at a point having Coordinates of X = 2,054,000.00 and Y = 436,500.00; Thence South 7,381.52 feet to a point having Coordinates of X = 2,054,000.00 and Y = 429,118.48; Thence North 72 degrees 23 minutes 01 seconds West 7,869.03 feet to a point having Coordinates of X = 2,046,500.00 and Y = 431,500.00; Thence North 5,000.00 feet to a point having Coordinates of X = 2,046,500.00 and Y = 436,500.00; Thence East 7,500.00 feet to the point of beginning, containing approximately **632 acres**, all as more particularly outlined on a plat on file in the Office of Mineral Resources, Department of Natural Resources. All bearings, distances and coordinates are based on Louisiana Coordinate System of 1927, (North or South Zone), where applicable.

NOTE: The above description of the Tract nominated for lease has been provided and corrected, where required, exclusively by the nomination party. Any mineral lease selected from this Tract and awarded by the Louisiana State Mineral Board shall be without warranty of any kind, either express, implied, or statutory, including, but not limited to, the implied warranties of merchantability and fitness for a particular purpose. Should the mineral lease awarded by the Louisiana State Mineral Board be subsequently modified, cancelled or abrogated due to the existence of conflicting leases, operating agreements, private claims or other future obligations or conditions which may affect all or any portion of the leased Tract, it shall not relieve the Lessee of the obligation to pay any bonus due thereon to the Louisiana State Mineral Board, nor shall the Louisiana State Mineral Board be obligated to refund any consideration paid by the Lessor prior to such modification, cancellation, or abrogation, including, but not limited to, bonuses, rentals and royalties.

NOTE: The State of Louisiana does hereby reserve, and this lease shall be subject to, the imprescriptible right of surface use in the nature of a servitude in favor of the Department of Natural Resources, including its Offices and Commissions, for the sole purpose of implementing, constructing, servicing and maintaining approved coastal zone management and/or restoration projects. Utilization of any and all rights derived under this lease by the mineral lessee, its agents, successors or assigns, shall not interfere with nor hinder the reasonable surface use by the Department of Natural Resources, its Offices or Commissions, as herein above reserved.

Applicant: AUDUBON OIL AND GAS CORPORATION

Bidder	Cash Payment	Price/Acre	Rental	Oil	Gas	Other

Legend

-  06110084
-  06110084water
-  Active_Leases
-  Counties

DOQQ2004

P.O.B.

LAKE VERRET

T14S - R13E

T14S - R12E

SL 346

ASSUMPTION PARISH

2,000 Feet



TRACT 38670 - Assumption Parish, Louisiana

All of the lands now or formerly constituting the beds and bottoms of all water bodies of every nature and description the title of which vests in the State of Louisiana, together with all islands arising therein and other lands formed by accretion or by reliction, where allowed by law, excepting tax adjudicated lands, and not presently under mineral lease and cross hatched on November 8, 2006, situated in Assumption Parish, Louisiana, and more particularly described as follows: Beginning at a point having Coordinates of X = 2,054,000.00 and Y = 436,500.00; Thence East 7,000.00 feet to a point having Coordinates of X = 2,061,000.00 and Y = 436,500.00; Thence South 9,604.27 feet to a point having Coordinates of X = 2,061,000.00 and Y = 426,895.73; Thence North 72 degrees 23 minutes 01 seconds West 7,344.43 feet to a point having Coordinates of X = 2,054,000.00 and Y = 429,118.48; Thence North 7,381.52 feet to the point of beginning, containing approximately **1,225 acres**, all as more particularly outlined on a plat on file in the Office of Mineral Resources, Department of Natural Resources. All bearings, distances and coordinates are based on Louisiana Coordinate System of 1927, (North or South Zone), where applicable.

NOTE: The above description of the Tract nominated for lease has been provided and corrected, where required, exclusively by the nomination party. Any mineral lease selected from this Tract and awarded by the Louisiana State Mineral Board shall be without warranty of any kind, either express, implied, or statutory, including, but not limited to, the implied warranties of merchantability and fitness for a particular purpose. Should the mineral lease awarded by the Louisiana State Mineral Board be subsequently modified, cancelled or abrogated due to the existence of conflicting leases, operating agreements, private claims or other future obligations or conditions which may affect all or any portion of the leased Tract, it shall not relieve the Lessee of the obligation to pay any bonus due thereon to the Louisiana State Mineral Board, nor shall the Louisiana State Mineral Board be obligated to refund any consideration paid by the Lessor prior to such modification, cancellation, or abrogation, including, but not limited to, bonuses, rentals and royalties.

NOTE: The State of Louisiana does hereby reserve, and this lease shall be subject to, the imprescriptible right of surface use in the nature of a servitude in favor of the Department of Natural Resources, including its Offices and Commissions, for the sole purpose of implementing, constructing, servicing and maintaining approved coastal zone management and/or restoration projects. Utilization of any and all rights derived under this lease by the mineral lessee, its agents, successors or assigns, shall not interfere with nor hinder the reasonable surface use by the Department of Natural Resources, its Offices or Commissions, as herein above reserved.

Applicant: AUDUBON OIL AND GAS CORPORATION

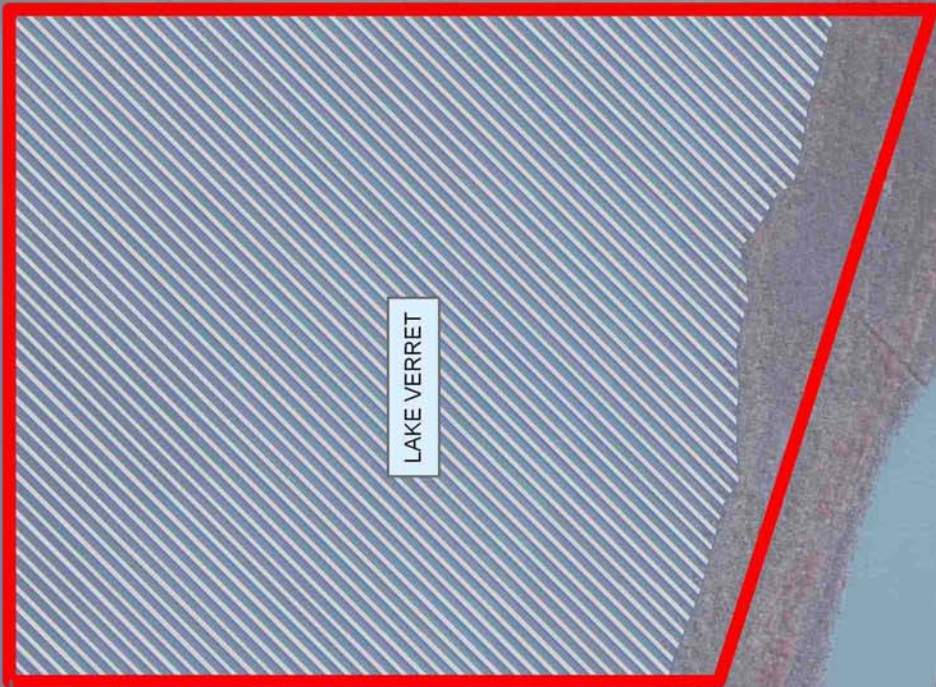
Bidder	Cash Payment	Price/Acre	Rental	Oil	Gas	Other

Legend

-  06110083
-  06110083water

DOQQ2004

ASSUMPTION PARISH



LAKE VERRET

P.O.B.

T14S - R13E

0 2,000 Feet



TRACT 38671 - Assumption Parish, Louisiana

All of the lands now or formerly constituting the beds and bottoms of all water bodies of every nature and description the title of which vests in the State of Louisiana, together with all islands arising therein and other lands formed by accretion or by reliction, where allowed by law, excepting tax adjudicated lands, and not presently under mineral lease and cross hatched on November 8, 2006, situated in Assumption Parish, Louisiana, and more particularly described as follows: Beginning at the Northwest corner of State Lease No. 18574 having Coordinates of X = 2,063,355.94 and Y = 430,547.64; Thence South 4,400.00 feet along the West boundary of State Lease No. 18574 to a point having Coordinates of X = 2,063,355.94 and Y = 426,147.64; Thence North 72 degrees 23 minutes 01 seconds West 2,471.86 feet to a point having Coordinates of X = 2,061,000.00 and Y = 426,895.73; Thence North 9,604.27 feet to a point having Coordinates of X = 2,061,000.00 and Y = 436,500.00; Thence East 7,000.00 feet to a point having Coordinates of X = 2,068,000.00 and Y = 436,500.00; Thence South 5,952.36 feet to a point on the North boundary of State Lease No. 18574 having Coordinates of X = 2,068,000.00 and Y = 430,547.64; Thence West 4,644.06 feet along the North boundary of State Lease No. 18574 to the point of beginning, containing approximately **841 acres**, all as more particularly outlined on a plat on file in the Office of Mineral Resources, Department of Natural Resources. All bearings, distances and coordinates are based on Louisiana Coordinate System of 1927, (North or South Zone), where applicable.

NOTE: The above description of the Tract nominated for lease has been provided and corrected, where required, exclusively by the nomination party. Any mineral lease selected from this Tract and awarded by the Louisiana State Mineral Board shall be without warranty of any kind, either express, implied, or statutory, including, but not limited to, the implied warranties of merchantability and fitness for a particular purpose. Should the mineral lease awarded by the Louisiana State Mineral Board be subsequently modified, cancelled or abrogated due to the existence of conflicting leases, operating agreements, private claims or other future obligations or conditions which may affect all or any portion of the leased Tract, it shall not relieve the Lessee of the obligation to pay any bonus due thereon to the Louisiana State Mineral Board, nor shall the Louisiana State Mineral Board be obligated to refund any consideration paid by the Lessor prior to such modification, cancellation, or abrogation, including, but not limited to, bonuses, rentals and royalties.

NOTE: The State of Louisiana does hereby reserve, and this lease shall be subject to, the imprescriptible right of surface use in the nature of a servitude in favor of the Department of Natural Resources, including its Offices and Commissions, for the sole purpose of implementing, constructing, servicing and maintaining approved coastal zone management and/or restoration projects. Utilization of any and all rights derived under this lease by the mineral lessee, its agents, successors or assigns, shall not interfere with nor hinder the reasonable surface use by the

Department of Natural Resources, its Offices or Commissions, as herein above reserved.

Applicant: AUDUBON OIL AND GAS CORPORATION

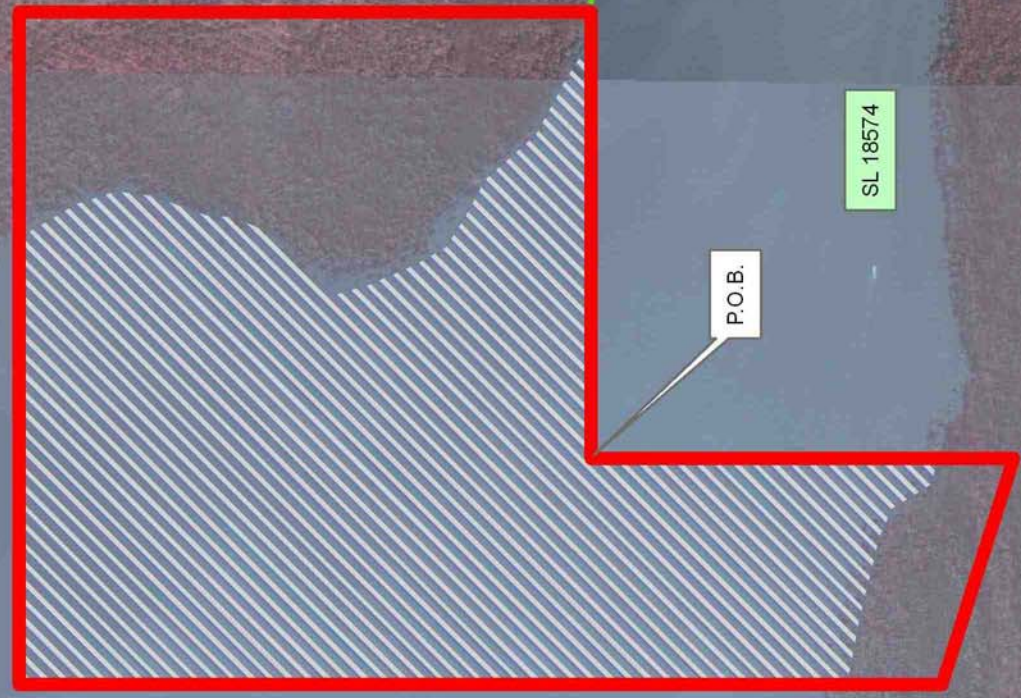
Bidder	Cash Payment	Price/Acre	Rental	Oil	Gas	Other

Legend

- 06110082
- 06110082water
- Active_Leases
- Counties
- DOQQ2004

ASSUMPTION PARISH

T14S - R13E



SL 18574

LAKE VERRET

TRACT 38672 - St. Bernard Parish, Louisiana

All of the lands now or formerly constituting the beds and bottoms of all water bodies of every nature and description the title of which vests in the State of Louisiana, together with all islands arising therein and other lands formed by accretion or by reliction, where allowed by law, excepting tax adjudicated lands, and not presently under mineral lease and cross hatched on November 8, 2006, situated in St. Bernard Parish, Louisiana, and more particularly described as follows: Beginning at a point having Coordinates of X = 2,479,460.00 and Y = 422,955.00; thence East 4,830.00 feet to a point having Coordinates of X = 2,484,290.00 and Y = 422,955.00; thence South 6,290.00 feet to a point having Coordinates of X = 2,484,290.00 and Y = 416,665.00; thence West 4,830.00 feet to a point having Coordinates of X = 2,479,460.00 and Y = 416,665.00; thence North 6,290.00 feet to the point of beginning, containing approximately **353 acres**, all as more particularly outlined on a plat on file in the Office of Mineral Resources, Department of Natural Resources. All bearings, distances and coordinates are based on Louisiana Coordinate System of 1927, (North or South Zone), where applicable.

NOTE: The above description of the Tract nominated for lease has been provided and corrected, where required, exclusively by the nomination party. Any mineral lease selected from this Tract and awarded by the Louisiana State Mineral Board shall be without warranty of any kind, either express, implied, or statutory, including, but not limited to, the implied warranties of merchantability and fitness for a particular purpose. Should the mineral lease awarded by the Louisiana State Mineral Board be subsequently modified, cancelled or abrogated due to the existence of conflicting leases, operating agreements, private claims or other future obligations or conditions which may affect all or any portion of the leased Tract, it shall not relieve the Lessee of the obligation to pay any bonus due thereon to the Louisiana State Mineral Board, nor shall the Louisiana State Mineral Board be obligated to refund any consideration paid by the Lessor prior to such modification, cancellation, or abrogation, including, but not limited to, bonuses, rentals and royalties.

NOTE: The State of Louisiana does hereby reserve, and this lease shall be subject to, the imprescriptible right of surface use in the nature of a servitude in favor of the Department of Natural Resources, including its Offices and Commissions, for the sole purpose of implementing, constructing, servicing and maintaining approved coastal zone management and/or restoration projects. Utilization of any and all rights derived under this lease by the mineral lessee, its agents, successors or assigns, shall not interfere with nor hinder the reasonable surface use by the Department of Natural Resources, its Offices or Commissions, as herein above reserved.

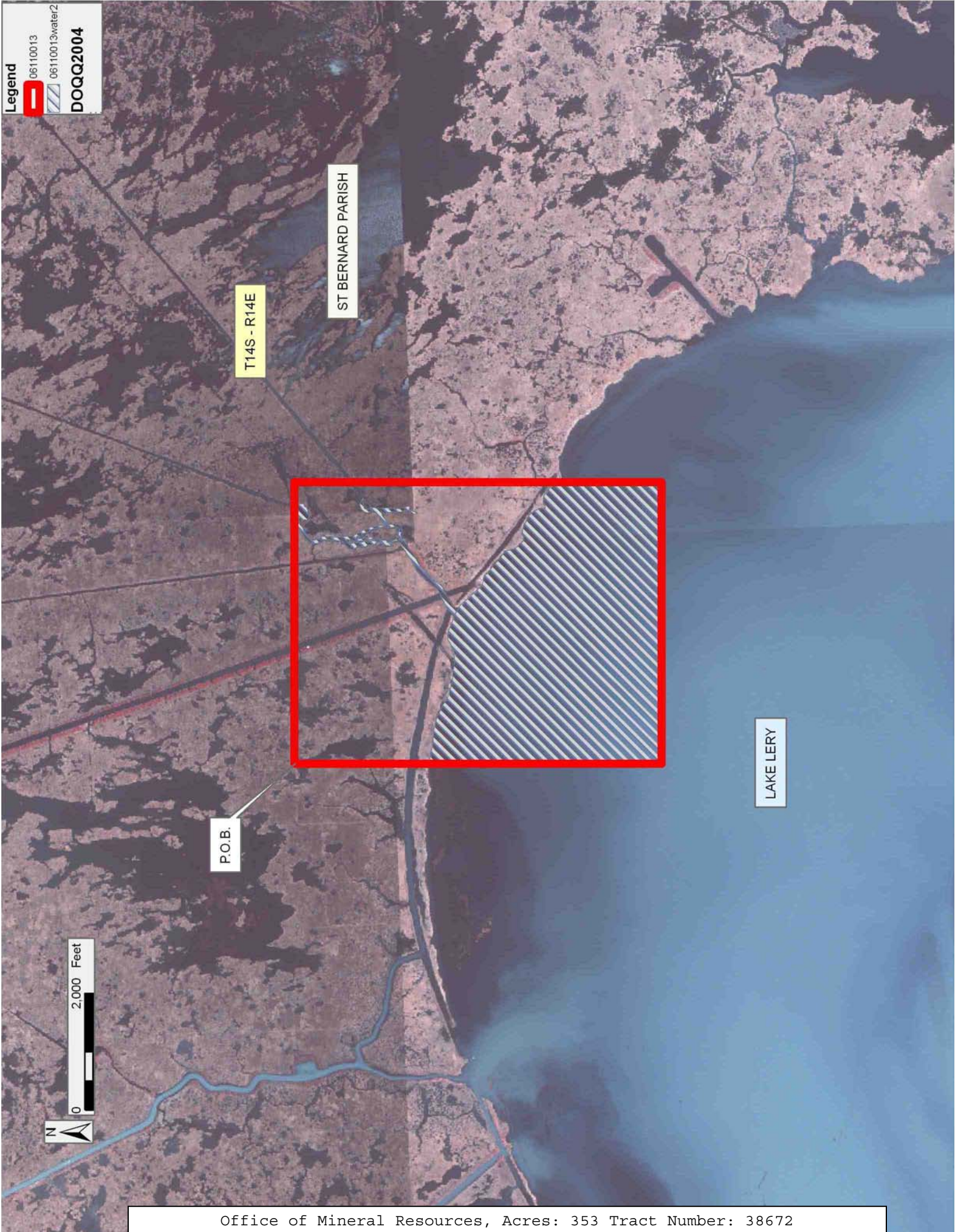
NOTE: The Department of Wildlife and Fisheries has designated certain areas in the coastal waters of the State of Louisiana as Oyster Seed Bed Areas. The exact location of those Seed Bed Areas must be obtained from

the Department of Wildlife and Fisheries and any work done under a mineral lease from the State of Louisiana may necessarily be conducted in conformity with the rules and regulations promulgated by the said Department of Wildlife and Fisheries for Oyster Seed Bed Areas.

Applicant: SOUTHERN LAND ASSOCIATES, LLC

Bidder	Cash Payment	Price/Acre	Rental	Oil	Gas	Other

Legend
06110013
06110013:water2
DOQQ2004



T14S - R14E

ST BERNARD PARISH

P.O.B.

LAKE LERY

0 2,000 Feet

TRACT 38673 - Plaquemines and St. Bernard Parishes, Louisiana

All of the lands now or formerly constituting the beds and bottoms of all water bodies of every nature and description the title of which vests in the State of Louisiana, together with all islands arising therein and other lands formed by accretion or by reliction, where allowed by law, excepting tax adjudicated lands, and not presently under mineral lease and cross hatched on November 8, 2006, situated in Plaquemines and St. Bernard Parishes, Louisiana, and more particularly described as follows: Beginning at a point having Coordinates of X = 2,483,074.00 and Y = 414,966.00; thence East 5,675.00 feet to a point having Coordinates of X = 2,488,749.00 and Y = 414,966.00; thence South 4,600.00 feet to a point having Coordinates of X = 2,488,749.00 and Y = 410,366.00; thence West 5,675.00 feet to a point having Coordinates of X = 2,483,074.00 and Y = 410,366.00; thence North 4,600.00 feet to the point of beginning, containing approximately **471 acres**, all as more particularly outlined on a plat on file in the Office of Mineral Resources, Department of Natural Resources. All bearings, distances and coordinates are based on Louisiana Coordinate System of 1927, (North or South Zone), where applicable.

NOTE: The above description of the Tract nominated for lease has been provided and corrected, where required, exclusively by the nomination party. Any mineral lease selected from this Tract and awarded by the Louisiana State Mineral Board shall be without warranty of any kind, either express, implied, or statutory, including, but not limited to, the implied warranties of merchantability and fitness for a particular purpose. Should the mineral lease awarded by the Louisiana State Mineral Board be subsequently modified, cancelled or abrogated due to the existence of conflicting leases, operating agreements, private claims or other future obligations or conditions which may affect all or any portion of the leased Tract, it shall not relieve the Lessee of the obligation to pay any bonus due thereon to the Louisiana State Mineral Board, nor shall the Louisiana State Mineral Board be obligated to refund any consideration paid by the Lessor prior to such modification, cancellation, or abrogation, including, but not limited to, bonuses, rentals and royalties.

NOTE: The State of Louisiana does hereby reserve, and this lease shall be subject to, the imprescriptible right of surface use in the nature of a servitude in favor of the Department of Natural Resources, including its Offices and Commissions, for the sole purpose of implementing, constructing, servicing and maintaining approved coastal zone management and/or restoration projects. Utilization of any and all rights derived under this lease by the mineral lessee, its agents, successors or assigns, shall not interfere with nor hinder the reasonable surface use by the Department of Natural Resources, its Offices or Commissions, as herein above reserved.

NOTE: The Department of Wildlife and Fisheries has designated certain areas in the coastal waters of the State of Louisiana as Oyster Seed Bed Areas. The exact location of those Seed Bed Areas must be obtained from

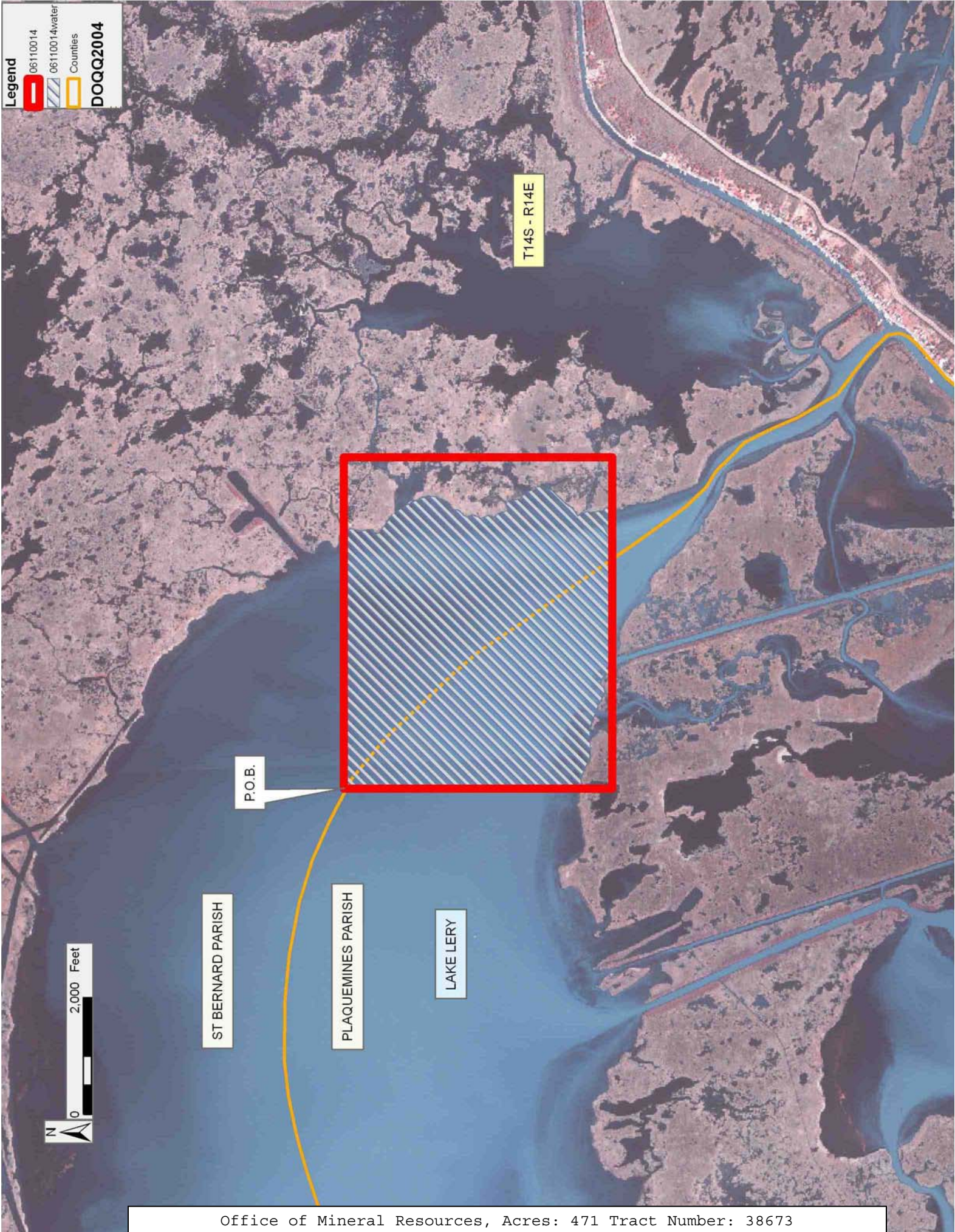
the Department of Wildlife and Fisheries and any work done under a mineral lease from the State of Louisiana may necessarily be conducted in conformity with the rules and regulations promulgated by the said Department of Wildlife and Fisheries for Oyster Seed Bed Areas.

Applicant: SOUTHERN LAND ASSOCIATES, LLC

Bidder	Cash Payment	Price/Acre	Rental	Oil	Gas	Other

Legend

- 06110014
- 06110014water
- Counties
- DOQQ2004



TRACT 38674 - Terrebonne Parish, Louisiana

All of the lands now or formerly constituting the beds and bottoms of all water bodies of every nature and description the title of which vests in the State of Louisiana, together with all islands arising therein and other lands formed by accretion or by reliction, where allowed by law, excepting tax adjudicated lands, and not presently under mineral lease and cross hatched on November 8, 2006, situated in Terrebonne Parish, Louisiana, and more particularly described as follows: Beginning at a point having Coordinates of X = 2,115,111.76 and Y = 366,185.63; thence South 15 degrees 00 minutes 00 seconds East 5,928.20 feet to a point having Coordinates of X = 2,116,646.10 and Y = 360,459.43; thence South 45 degrees 00 minutes 00 seconds West 4,000.00 feet to a point having Coordinates of X = 2,113,817.67 and Y = 357,631.00; thence North 15 degrees 00 minutes 00 seconds West 7,000.00 feet to a point having Coordinates of X = 2,112,005.93 and Y = 364,392.48; thence North 60 degrees 00 minutes 00 seconds East 3,586.30 feet to the Point of Beginning, containing approximately **14 acres**, all as more particularly outlined on a plat on file in the Office of Mineral Resources, Department of Natural Resources. All bearings, distances and coordinates are based on Louisiana Coordinate System of 1927, (North or South Zone), where applicable.

NOTE: The above description of the Tract nominated for lease has been provided and corrected, where required, exclusively by the nomination party. Any mineral lease selected from this Tract and awarded by the Louisiana State Mineral Board shall be without warranty of any kind, either express, implied, or statutory, including, but not limited to, the implied warranties of merchantability and fitness for a particular purpose. Should the mineral lease awarded by the Louisiana State Mineral Board be subsequently modified, cancelled or abrogated due to the existence of conflicting leases, operating agreements, private claims or other future obligations or conditions which may affect all or any portion of the leased Tract, it shall not relieve the Lessee of the obligation to pay any bonus due thereon to the Louisiana State Mineral Board, nor shall the Louisiana State Mineral Board be obligated to refund any consideration paid by the Lessor prior to such modification, cancellation, or abrogation, including, but not limited to, bonuses, rentals and royalties.

Bidder	Cash Payment	Price/Acre	Rental	Oil	Gas	Other

Applicant: ACL EXPLORATION, INC.

Legend

- 06110009
- 06110005water
- DOQQ2004

TERREBONNE PARISH

T16S - R15E

T16S - R14E

P.O.B.

BAYOU BLACK



0 2,000 Feet

A north arrow pointing upwards and a scale bar indicating 0 to 2,000 feet.