

TRACT 38642 - Portion of Block 20, East Cameron Area, Revised, and Block 1, Vermilion Area, Revised, Cameron and Vermilion Parishes, Louisiana

The beds and bottoms of all water bodies belonging to the State of Louisiana located in Block 20, East Cameron Area, Revised, and Block 1, Vermilion Area, Revised, together with any present lands formed by accretion to the shoreline or islands formed therein, located in Cameron and Vermilion Parishes, Louisiana, owned by and not presently under mineral lease as of November 8, 2006, from the State of Louisiana, the geographical area of which is more fully described as follows: Beginning at a Point having Coordinates of X = 1,596,555.78 and Y = 325,433.93; Thence West 11,246.07 feet to a point having Coordinates of X = 1,585,309.71 and Y = 325,433.93; Thence North approximately 10,222 feet to a point on the Louisiana Coastline; Thence along said Louisiana Coastline the following courses: South 73 degrees 29 minutes 19 seconds East 1,533.53 feet to a point having Coordinates of X = 1,586,780.00 and Y = 335,220.00, South 75 degrees 27 minutes 43 seconds East 2,768.65 feet to a point having Coordinates of X = 1,589,460.00 and Y = 334,525.00, South 71 degrees 36 minutes 13 seconds East 2,344.83 feet to a point having Coordinates of X = 1,591,685.00 and Y = 333,785.00, South 78 degrees 41 minutes 24 seconds East 1,351.24 feet to a point having Coordinates of X = 1,593,010.00 and Y = 333,520.00, North 82 degrees 05 minutes 34 seconds East 908.64 feet to a point having Coordinates of X = 1,593,910.00 and Y = 333,645.00, South 24 degrees 55 minutes 43 seconds East 391.47 feet to a point having Coordinates of X = 1,594,075.00 and Y = 333,290.00, South 88 degrees 21 minutes 06 seconds East 695.29 feet to a point having Coordinates of X = 1,594,770.00 and Y = 333,270.00, South 67 degrees 45 minutes 04 seconds East 475.39 feet to a point having Coordinates of X = 1,595,210.00 and Y = 333,090.00, and South 81 degrees 12 minutes 57 seconds East approximately 1,362 feet to a point having Coordinates of X = 1,596,555.78 and Y = 332,882.04; thence leaving said Louisiana Coastline South approximately 7,448 feet to the point of beginning, containing approximately **2,249 acres**, all as more particularly outlined on a plat on file in the Office of Mineral Resources, Department of Natural Resources. All bearings, distances and coordinates are based on Louisiana Coordinate System of 1927, (North or South Zone).

NOTE: The above description of the Tract nominated for lease has been provided and corrected, where required, exclusively by the nomination party. Any mineral lease selected from this Tract and awarded by the Louisiana State Mineral Board shall be without warranty of any kind, either express, implied, or statutory, including, but not limited to, the implied warranties of merchantability and fitness for a particular purpose. Should the mineral lease awarded by the Louisiana State Mineral Board be subsequently modified, cancelled or abrogated due to the existence of conflicting leases, operating agreements, private claims or other future obligations or conditions which may affect all or any portion of the leased Tract, it shall not relieve the Lessee of the obligation to pay any bonus due thereon to the Louisiana State Mineral Board, nor shall the Louisiana State Mineral Board be obligated to refund any consideration

paid by the Lessor prior to such modification, cancellation, or abrogation, including, but not limited to, bonuses, rentals and royalties.

NOTE: The State of Louisiana does hereby reserve, and this lease shall be subject to, the imprescriptible right of surface use in the nature of a servitude in favor of the Department of Natural Resources, including its Offices and Commissions, for the sole purpose of implementing, constructing, servicing and maintaining approved coastal zone management and/or restoration projects. Utilization of any and all rights derived under this lease by the mineral lessee, its agents, successors or assigns, shall not interfere with nor hinder the reasonable surface use by the Department of Natural Resources, its Offices or Commissions, as herein above reserved.

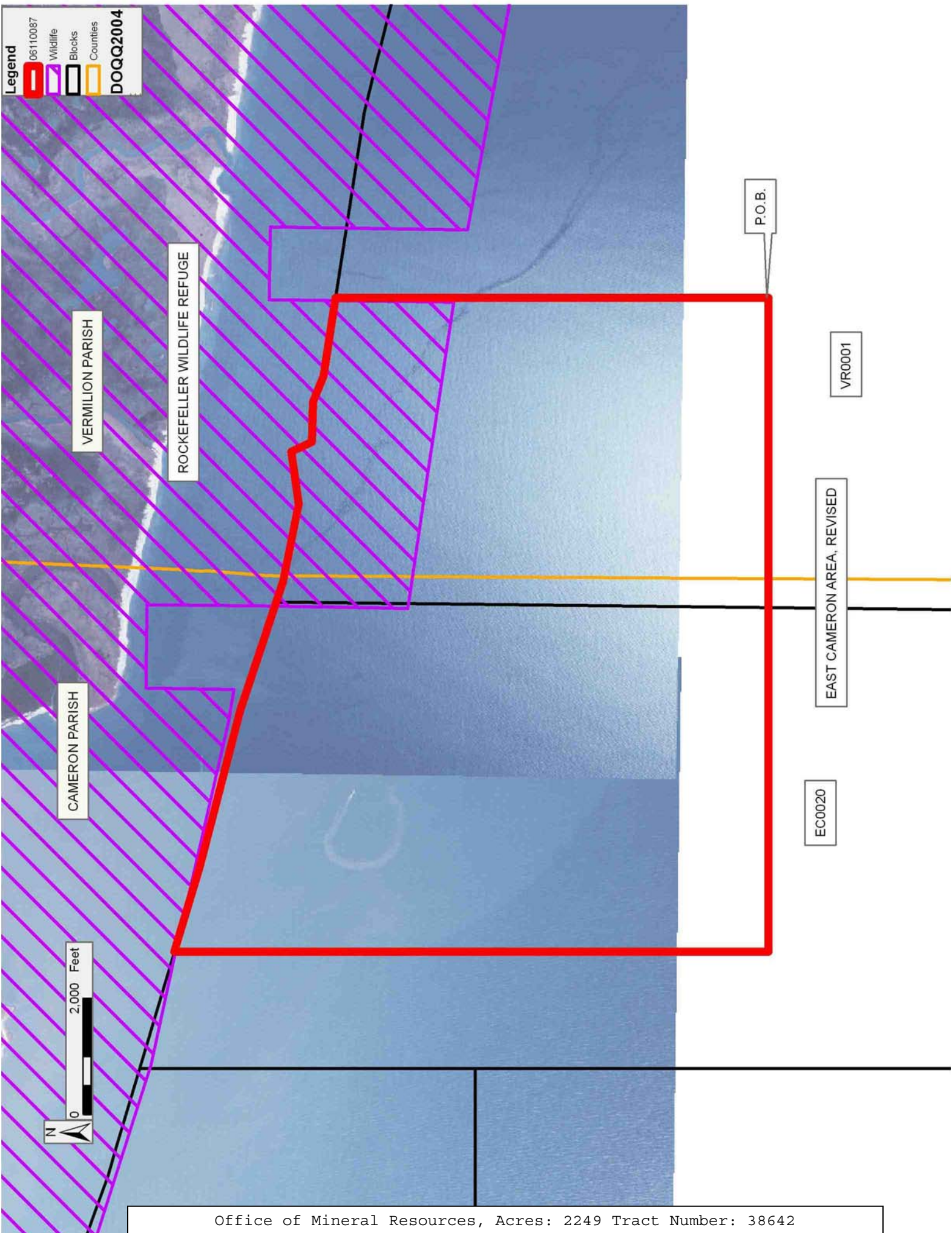
Applicant: GHJ LAND SERVICES, L.L.C.

Bidder	Cash Payment	Price/Acre	Rental	Oil	Gas	Other

Legend

- 06110087
- Wildlife
- Blocks
- Counties

DOQQ2004



VERMILION PARISH

ROCKEFELLER WILDLIFE REFUGE

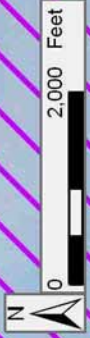
CAMERON PARISH

EAST CAMERON AREA, REVISED

VR0001

EC0020

P.O.B.



TRACT 38643 - Portion of Blocks 1, and 2, Vermilion Area, Revised, Vermilion Parish, Louisiana

The beds and bottoms of all water bodies belonging to the State of Louisiana located in Blocks 1, and 2, Vermilion Area, Revised, together with any present lands formed by accretion to the shoreline or islands formed therein, located in Vermilion Parish, Louisiana, owned by and not presently under mineral lease as of November 8, 2006, from the State of Louisiana, the geographical area of which is more fully described as follows: Beginning at a point having Coordinates of X = 1,607,794.44 and Y = 325,433.93; Thence West 11,238.66 feet to a point having Coordinates of X = 1,596,555.78 and Y = 325,433.93; Thence North approximately 7,448 feet to a point on the Louisiana Coastline having an X Coordinate of X = 1,596,555.78; Thence along said Louisiana Coastline the following courses: South 81 degrees 12 minutes 57 seconds East 3,222.01 feet to a point having Coordinates of X = 1,599,740.00 and Y = 332,390.00, South 76 degrees 17 minutes 35 seconds East 1,055.05 feet to a point having Coordinates of X = 1,600,765.00 and Y = 332,140.00, South 75 degrees 49 minutes 19 seconds East 2,449.62 feet to a point having Coordinates of X = 1,603,140.00 and Y = 331,540.00, South 83 degrees 52 minutes 49 seconds East 2,438.90 feet to a point having Coordinates of X = 1,605,565.00 and Y = 331,280.00, South 57 degrees 59 minutes 41 seconds East 471.70 feet to a point having Coordinates of X = 1,605,965.00 and Y = 331,030.00, and Southeasterly approximately 1,837 feet to a point having an X Coordinate of X = 1,607,794.44; Thence leaving said Louisiana Coastline South approximately 5,427 feet to the point of beginning, containing approximately **1,653 acres**, all as more particularly outlined on a plat on file in the Office of Mineral Resources, Department of Natural Resources. All bearings, distances and coordinates are based on Louisiana Coordinate System of 1927, (North or South Zone).

NOTE: The above description of the Tract nominated for lease has been provided and corrected, where required, exclusively by the nomination party. Any mineral lease selected from this Tract and awarded by the Louisiana State Mineral Board shall be without warranty of any kind, either express, implied, or statutory, including, but not limited to, the implied warranties of merchantability and fitness for a particular purpose. Should the mineral lease awarded by the Louisiana State Mineral Board be subsequently modified, cancelled or abrogated due to the existence of conflicting leases, operating agreements, private claims or other future obligations or conditions which may affect all or any portion of the leased Tract, it shall not relieve the Lessee of the obligation to pay any bonus due thereon to the Louisiana State Mineral Board, nor shall the Louisiana State Mineral Board be obligated to refund any consideration paid by the Lessor prior to such modification, cancellation, or abrogation, including, but not limited to, bonuses, rentals and royalties.

NOTE: The State of Louisiana does hereby reserve, and this lease shall be subject to, the imprescriptible right of surface use in the nature of a servitude in favor of the Department of Natural Resources, including its

Offices and Commissions, for the sole purpose of implementing, constructing, servicing and maintaining approved coastal zone management and/or restoration projects. Utilization of any and all rights derived under this lease by the mineral lessee, its agents, successors or assigns, shall not interfere with nor hinder the reasonable surface use by the Department of Natural Resources, its Offices or Commissions, as herein above reserved.

Applicant: GHJ LAND SERVICES, L.L.C.

Bidder	Cash Payment	Price/Acre	Rental	Oil	Gas	Other

Legend

06110095
 Wildlife
 Blocks

VERMILION PARISH

ROCKEFELLER WILDLIFE REFUGE

P.O.B.

GULF OF MEXICO

VERMILION AREA, REVISED

VR0002

VR0001

0 2,000 Feet

TRACT 38644 - Portion of Block 2, Vermilion Area, Revised, Vermilion Parish, Louisiana

The beds and bottoms of all water bodies belonging to the State of Louisiana located in Block 2, Vermilion Area, Revised, together with any present lands formed by accretion to the shoreline or islands formed therein, located in Vermilion Parish, Louisiana, owned by and not presently under mineral lease as of November 8, 2006, from the State of Louisiana, the geographical area of which is more fully described as follows: Beginning at a Point having Coordinates of X = 1,616,294.44 and Y = 319,564.17; Thence West 8,500.00 feet to a point having Coordinates of X = 1,607,794.44 and Y = 319,564.17; Thence North approximately 11,297 feet to a point on the Louisiana Coastline; Thence along said Louisiana Coastline the following courses: Southeasterly approximately 287 feet to a point having Coordinates of X = 1,608,080.00 and Y = 330,835.00; South 73 degrees 46 minutes 33 seconds East 1,270.60 feet to a point having Coordinates of X = 1,609,300.00 and Y = 330,480.00; South 79 degrees 47 minutes 56 seconds East 3,952.48 feet to a point having Coordinates of X = 1,613,190.00 and Y = 329,780.00; and Southeasterly approximately 3,113 feet to a point with an X Coordinate of X = 1,616,294.44: Thence leaving said Louisiana Coastline South approximately 9,981 feet to the point of beginning containing approximately **2,047 acres**, all as more particularly outlined on a plat on file in the Office of Mineral Resources, Department of Natural Resources. All bearings, distances and coordinates are based on Louisiana Coordinate System of 1927, (North or South Zone).

NOTE: The above description of the Tract nominated for lease has been provided and corrected, where required, exclusively by the nomination party. Any mineral lease selected from this Tract and awarded by the Louisiana State Mineral Board shall be without warranty of any kind, either express, implied, or statutory, including, but not limited to, the implied warranties of merchantability and fitness for a particular purpose. Should the mineral lease awarded by the Louisiana State Mineral Board be subsequently modified, cancelled or abrogated due to the existence of conflicting leases, operating agreements, private claims or other future obligations or conditions which may affect all or any portion of the leased Tract, it shall not relieve the Lessee of the obligation to pay any bonus due thereon to the Louisiana State Mineral Board, nor shall the Louisiana State Mineral Board be obligated to refund any consideration paid by the Lessor prior to such modification, cancellation, or abrogation, including, but not limited to, bonuses, rentals and royalties.

NOTE: The State of Louisiana does hereby reserve, and this lease shall be subject to, the imprescriptible right of surface use in the nature of a servitude in favor of the Department of Natural Resources, including its Offices and Commissions, for the sole purpose of implementing, constructing, servicing and maintaining approved coastal zone management and/or restoration projects. Utilization of any and all rights derived under this lease by the mineral lessee, its agents, successors or assigns, shall not interfere with nor hinder the reasonable surface use by the

Department of Natural Resources, its Offices or Commissions, as herein above reserved.

Applicant: GHJ LAND SERVICES, L.L.C.

Bidder	Cash Payment	Price/Acre	Rental	Oil	Gas	Other

Legend

- 06110090
- Wildlife
- Blocks

ROCKEFELLER WILDLIFE REFUGE



VERMILION PARISH

VERMILION AREA, REVISED

VR0002

P.O.B.

TRACT 38645 - Portion of Block 20, East Cameron Area, Revised, and Block 1, Vermilion Area, Revised, Cameron and Vermilion Parishes, Louisiana

The beds and bottoms of all water bodies belonging to the State of Louisiana located in Block 20, East Cameron Area, Revised, and Block 1, Vermilion Area, Revised, together with any present lands formed by accretion to the shoreline or islands formed therein, located in Cameron and Vermilion Parishes, Louisiana, owned by and not presently under mineral lease as of November 8, 2006, from the State of Louisiana, the geographical area of which is more fully described as follows: Beginning at a Point having Coordinates of X = 1,596,555.78 and Y = 325,433.93; Thence South 5,869.76 feet to a point having Coordinates of X = 1,596,555.78 and Y = 319,564.17; Thence West 11,246.07 feet to a point having Coordinates of X = 1,585,309.71 and Y = 319,564.17; Thence North 5,869.76 feet to a point having Coordinates of X = 1,585,309.71 and Y = 325,433.93; Thence East 11,246.07 feet to the point of beginning, containing **1515.42 acres**, all as more particularly outlined on a plat on file in the Office of Mineral Resources, Department of Natural Resources. All bearings, distances and coordinates are based on Louisiana Coordinate System of 1927, (North or South Zone).

NOTE: The above description of the Tract nominated for lease has been provided and corrected, where required, exclusively by the nomination party. Any mineral lease selected from this Tract and awarded by the Louisiana State Mineral Board shall be without warranty of any kind, either express, implied, or statutory, including, but not limited to, the implied warranties of merchantability and fitness for a particular purpose. Should the mineral lease awarded by the Louisiana State Mineral Board be subsequently modified, cancelled or abrogated due to the existence of conflicting leases, operating agreements, private claims or other future obligations or conditions which may affect all or any portion of the leased Tract, it shall not relieve the Lessee of the obligation to pay any bonus due thereon to the Louisiana State Mineral Board, nor shall the Louisiana State Mineral Board be obligated to refund any consideration paid by the Lessor prior to such modification, cancellation, or abrogation, including, but not limited to, bonuses, rentals and royalties.

NOTE: The State of Louisiana does hereby reserve, and this lease shall be subject to, the imprescriptible right of surface use in the nature of a servitude in favor of the Department of Natural Resources, including its Offices and Commissions, for the sole purpose of implementing, constructing, servicing and maintaining approved coastal zone management and/or restoration projects. Utilization of any and all rights derived under this lease by the mineral lessee, its agents, successors or assigns, shall not interfere with nor hinder the reasonable surface use by the Department of Natural Resources, its Offices or Commissions, as herein above reserved.

Applicant: GHJ LAND SERVICES, L.L.C.

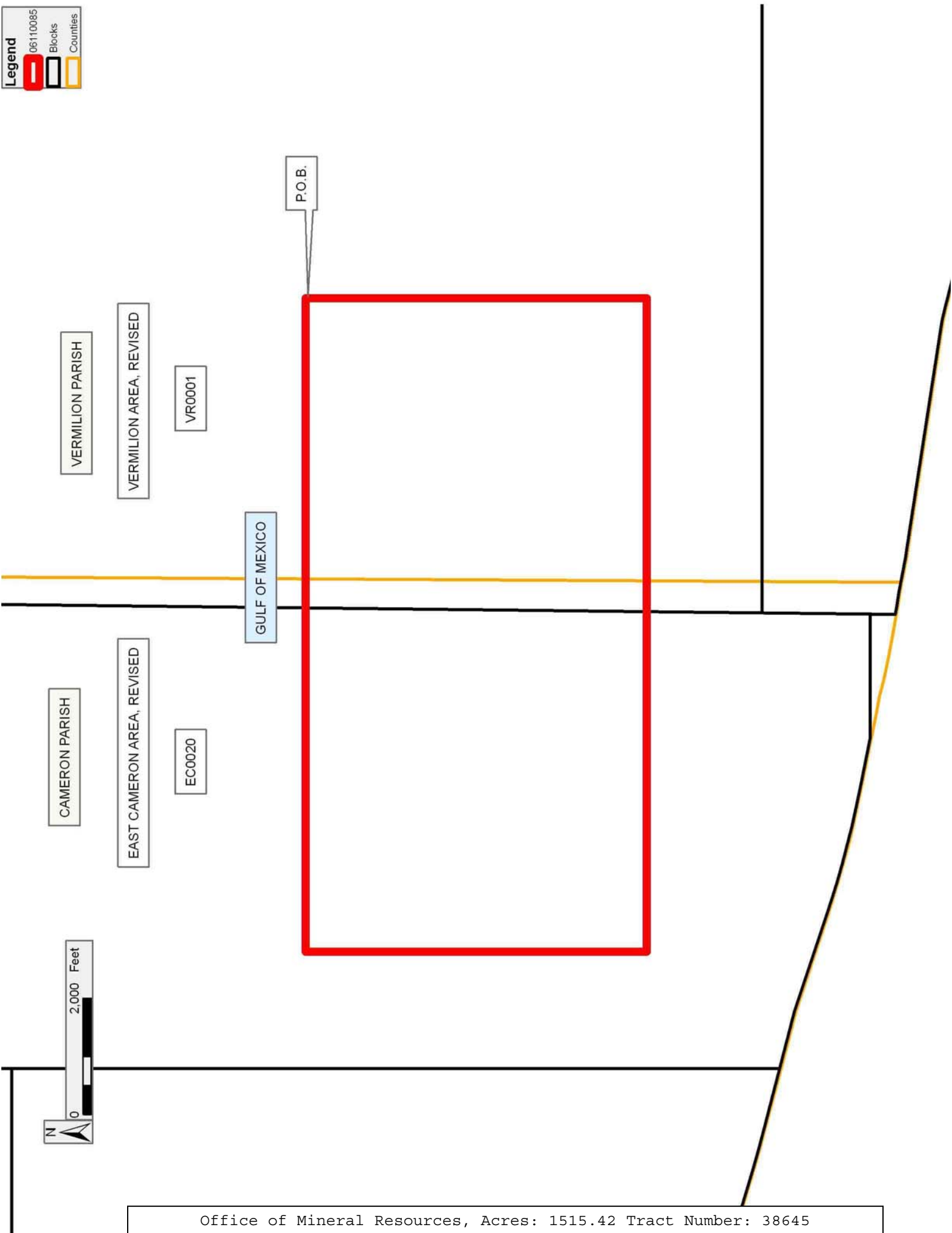
Bidder	Cash Payment	Price/Acre	Rental	Oil	Gas	Other

Legend

06110085

Blocks

Counties



TRACT 38646 - Portion of Blocks 1, and 2, Vermilion Area, Revised, Vermilion Parish, Louisiana

The beds and bottoms of all water bodies belonging to the State of Louisiana located in Blocks 1, and 2, Vermilion Area, Revised, together with any present lands formed by accretion to the shoreline or islands formed therein, located in Vermilion Parish, Louisiana, owned by and not presently under mineral lease as of November 8, 2006, from the State of Louisiana, the geographical area of which is more fully described as follows: Beginning at a Point having Coordinates of X = 1,596,555.78 and Y = 325,433.93; Thence East 11,238.66 feet to a point having Coordinates of X = 1,607,794.44 and Y = 325,433.93; Thence South 5,869.76 feet to a point having Coordinates of X = 1,607,794.44 and Y = 319,564.17; Thence West 11,238.66 feet to a point having Coordinates of X = 1,596,555.78 and Y = 319,564.17; Thence North 5,869.76 feet to the point of beginning, containing **1,514.42 acres**, all as more particularly outlined on a plat on file in the Office of Mineral Resources, Department of Natural Resources. All bearings, distances and coordinates are based on Louisiana Coordinate System of 1927, (North or South Zone).

NOTE: The above description of the Tract nominated for lease has been provided and corrected, where required, exclusively by the nomination party. Any mineral lease selected from this Tract and awarded by the Louisiana State Mineral Board shall be without warranty of any kind, either express, implied, or statutory, including, but not limited to, the implied warranties of merchantability and fitness for a particular purpose. Should the mineral lease awarded by the Louisiana State Mineral Board be subsequently modified, cancelled or abrogated due to the existence of conflicting leases, operating agreements, private claims or other future obligations or conditions which may affect all or any portion of the leased Tract, it shall not relieve the Lessee of the obligation to pay any bonus due thereon to the Louisiana State Mineral Board, nor shall the Louisiana State Mineral Board be obligated to refund any consideration paid by the Lessor prior to such modification, cancellation, or abrogation, including, but not limited to, bonuses, rentals and royalties.

NOTE: The State of Louisiana does hereby reserve, and this lease shall be subject to, the imprescriptible right of surface use in the nature of a servitude in favor of the Department of Natural Resources, including its Offices and Commissions, for the sole purpose of implementing, constructing, servicing and maintaining approved coastal zone management and/or restoration projects. Utilization of any and all rights derived under this lease by the mineral lessee, its agents, successors or assigns, shall not interfere with nor hinder the reasonable surface use by the Department of Natural Resources, its Offices or Commissions, as herein above reserved.

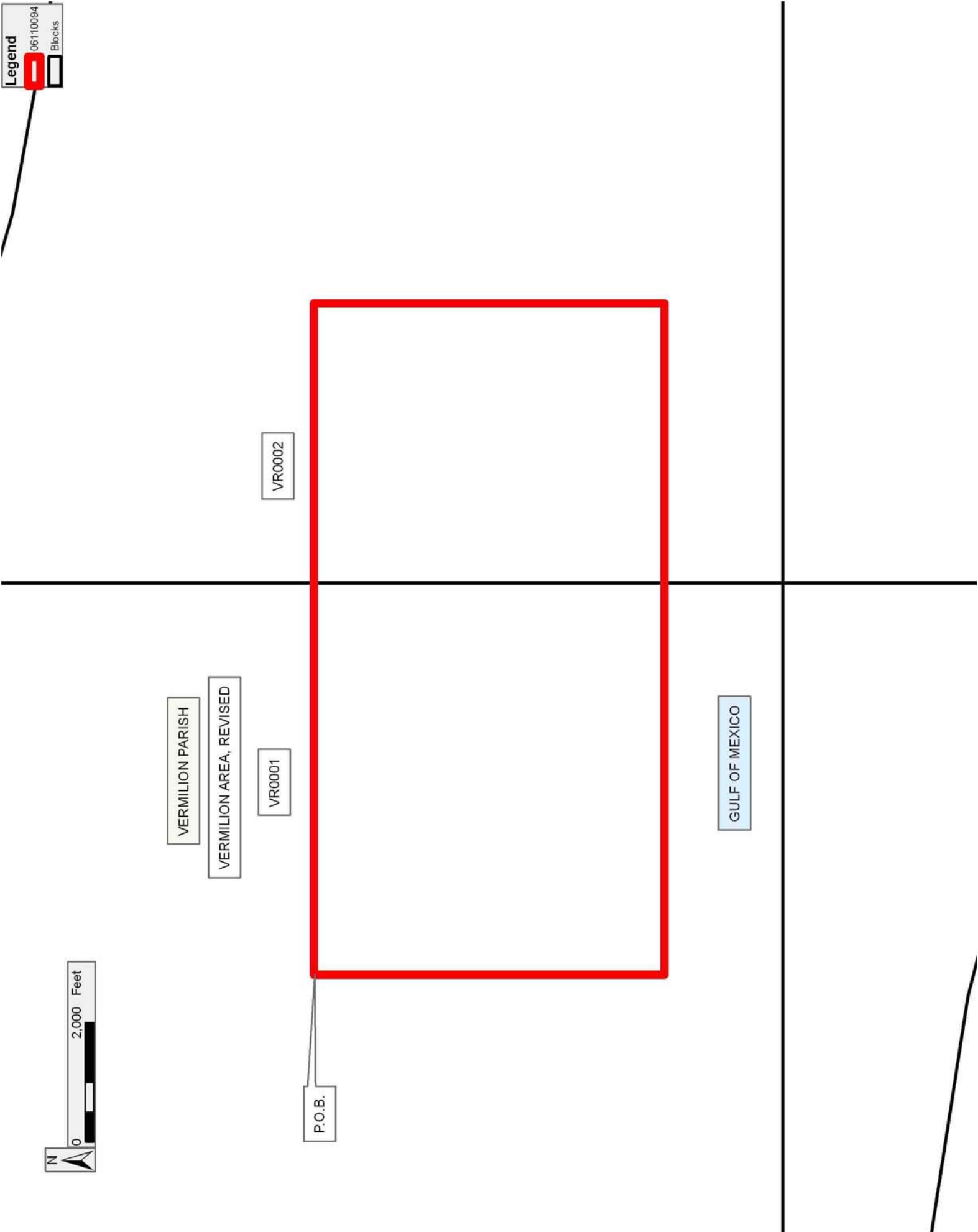
Applicant: GHJ LAND SERVICES, L.L.C.

Bidder	Cash Payment	Price/Acre	Rental	Oil	Gas	Other

Legend

06110094

Blocks



TRACT 38647 - Portion of Block 45, Breton Sound Area, Plaquemines Parish, Louisiana

The beds and bottoms of all water bodies belonging to the State of Louisiana located in Block 45, Breton Sound Area, together with any present lands formed by accretion to the shoreline or islands formed therein, located in Plaquemines Parish, Louisiana, owned by and not presently under mineral lease as of November 8, 2006, from the State of Louisiana, the geographical area of which is more fully described as follows: Beginning at the Northeast corner of State Lease No. 1237, as amended, also being a point on the North line of Block 45, Breton Sound Area, having Coordinates of X = 2,692,350.00 and Y = 307,580.00; thence East 2,000.00 feet along the North line of said Block 45 to its Northeast corner having Coordinates of X = 2,694,350.00 and Y = 307,580.00; thence South 6,750.00 feet along the East line of said Block 45 to the Northeast corner of State Lease No. 19052 having Coordinates of X = 2,694,350.00 and Y = 300,830.00; thence along the boundary of said State Lease No. 19052 the following courses: West 4,000.00 feet and South 5,101.07 feet to its Southwest corner, also being a point on the boundary of State Lease No. 17942 having Coordinates of X = 2,690,350.00 and Y = 295,728.93; thence South 64 degrees 19 minutes 11 seconds West 2,219.20 feet along the boundary of said State Lease No. 17942 to a corner of State Lease No. 19050 having Coordinates of X = 2,688,350.00 and Y = 294,767.24; thence along the boundary of said State Lease No. 19050 the following courses: North 4,662.76 feet and West 1,827.96 feet to the Easternmost corner of State Lease No. 19080, also being a point on the Louisiana Coastline having Coordinates of X = 2,686,522.04 and Y = 299,430.00; thence along the boundary of said Louisiana Coastline the following courses: Northeasterly along a straight line to a point having Coordinates of X = 2,687,014 and Y = 300,054, Northeasterly along a straight line to a point having Coordinates of X = 2,687,610 and Y = 301,648 and Northeasterly along a straight line to a point on the South boundary of State Lease No. 2001, as amended, having Coordinates of X = 2,687,625.35 and Y = 301,705.00; thence along the boundary of said State Lease No. 2001 the following courses: East 4,724.65 feet and North 2,925.00 feet to its Northeast corner, also being the Southeast corner of said State Lease No. 1237 having Coordinates of X = 2,692,350.00 and Y = 304,630.00; thence North 2,950.00 feet along the East boundary of said State Lease No. 1237 to its Northeast corner, also being the point of beginning, containing approximately **708.16 acres**, all as more particularly outlined on a plat on file in the Office of Mineral Resources, Department of Natural Resources. All bearings, distances and coordinates are based on Louisiana Coordinate System of 1927, (North or South Zone).

NOTE: The above description of the Tract nominated for lease has been provided and corrected, where required, exclusively by the nomination party. Any mineral lease selected from this Tract and awarded by the Louisiana State Mineral Board shall be without warranty of any kind, either express, implied, or statutory, including, but not limited to, the implied warranties of merchantability and fitness for a particular

purpose. Should the mineral lease awarded by the Louisiana State Mineral Board be subsequently modified, cancelled or abrogated due to the existence of conflicting leases, operating agreements, private claims or other future obligations or conditions which may affect all or any portion of the leased Tract, it shall not relieve the Lessee of the obligation to pay any bonus due thereon to the Louisiana State Mineral Board, nor shall the Louisiana State Mineral Board be obligated to refund any consideration paid by the Lessor prior to such modification, cancellation, or abrogation, including, but not limited to, bonuses, rentals and royalties.

NOTE: The State of Louisiana does hereby reserve, and this lease shall be subject to, the imprescriptible right of surface use in the nature of a servitude in favor of the Department of Natural Resources, including its Offices and Commissions, for the sole purpose of implementing, constructing, servicing and maintaining approved coastal zone management and/or restoration projects. Utilization of any and all rights derived under this lease by the mineral lessee, its agents, successors or assigns, shall not interfere with nor hinder the reasonable surface use by the Department of Natural Resources, its Offices or Commissions, as herein above reserved.

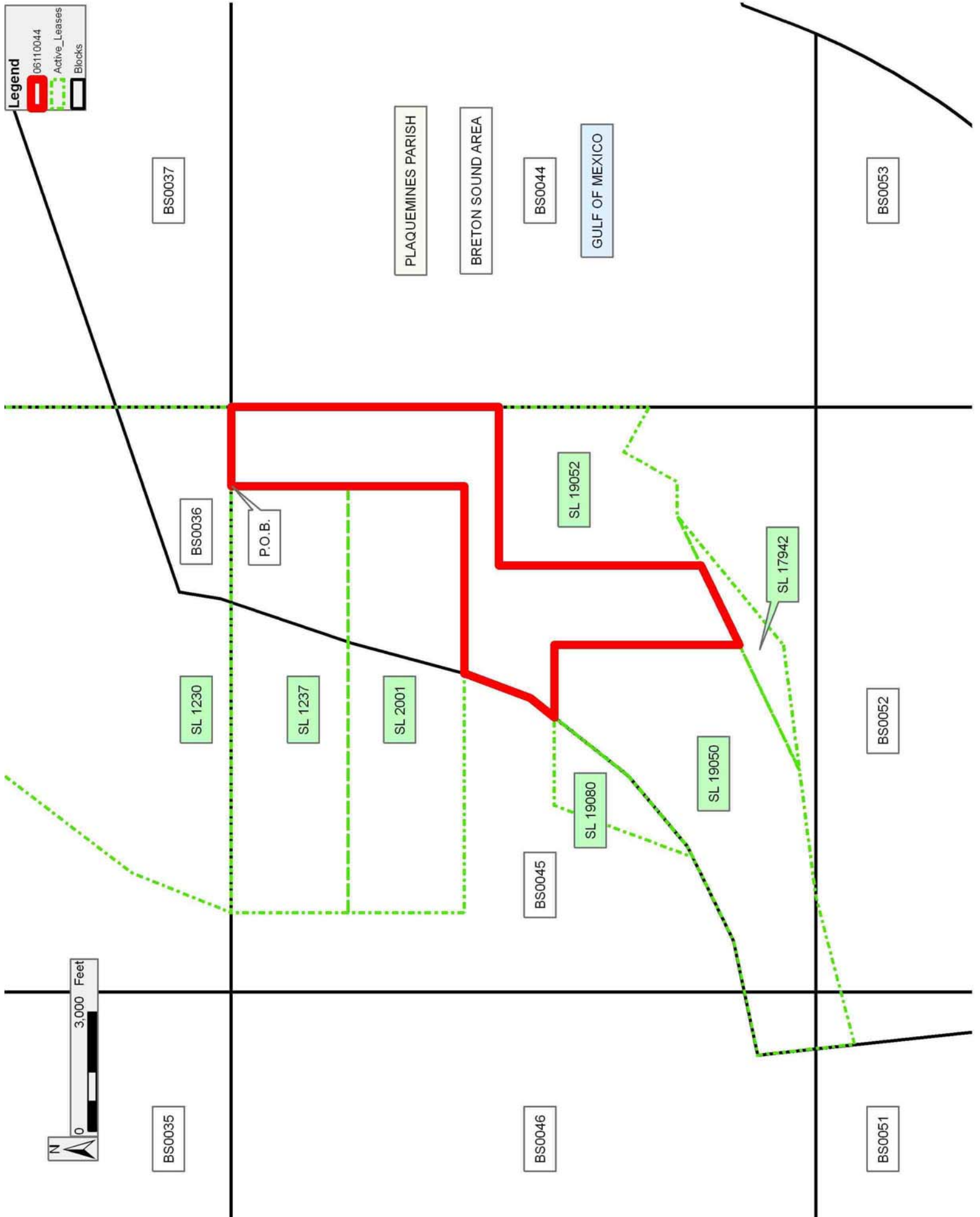
NOTE: It appears, according to our records, that a portion of this Tract is located within the restrictive safety fairway area as set out by the Corps of Engineers, U.S. Army and/or the restrictive anchorage area as set out by the U.S. Coast Guard.

Applicant: HAROLD J. ANDERSON, INC.

Bidder	Cash Payment	Price/Acre	Rental	Oil	Gas	Other

Legend

- 06110044
- Active_Leases
- Blocks



TRACT 38648 - Portion of Block 52, Breton Sound Area, Plaquemines Parish, Louisiana

The beds and bottoms of all water bodies belonging to the State of Louisiana located in Block 52, Breton Sound Area, together with any present lands formed by accretion to the shoreline or islands formed therein, located in Plaquemines Parish, Louisiana, owned by and not presently under mineral lease as of November 8, 2006, from the State of Louisiana, the geographical area of which is more fully described as follows: Beginning at a point on the Northeast corner of State Lease No. 17860, also being a point on the boundary of State Lease No. 12806, as amended, having Coordinates of X = 2,692,443.73 and Y = 289,580.18; thence North 60 degrees 17 minutes 03 seconds East 869.04 feet along the boundary of said State Lease No. 12806 to the Northwest corner of State Lease No. 16737, as amended, having Coordinates of X = 2,693,198.49 and Y = 290,010.96; thence along the boundary of said State Lease No. 16737 the following courses: South 58 degrees 34 minutes 46 seconds East 553.87 feet and North 29 degrees 33 minutes 36 seconds East 1,204.23 feet to its Eastern most corner having Coordinates of X = 2,694,265.23 and Y = 290,769.71; thence North 54 degrees 34 minutes 44 seconds East 104.02 feet along the boundary of said State Lease No. 12806 to a point on the East line of said Block 52, having Coordinates of X = 2,694,350.00 and Y = 290,830.00; thence South 12,750.00 feet along the East line of said Block 52 to its Southeast corner having Coordinates of X = 2,694,350.00 and Y = 278,080.00; thence West 2,500.00 feet along said Block 52 to the Southeast corner of State Lease No. 17860 having Coordinates of X = 2,691,850.00 and Y = 278,080.00; thence along the boundary of said State Lease No. 17860 the following courses: North 06 degrees 54 minutes 40 seconds East 8,310.39 feet and North 07 degrees 07 minutes 30 seconds West 3,275.47 feet to the point of beginning, containing approximately **524.16 acres**, all as more particularly outlined on a plat on file in the Office of Mineral Resources, Department of Natural Resources. All bearings, distances and coordinates are based on Louisiana Coordinate System of 1927, (North or South Zone).

NOTE: The above description of the Tract nominated for lease has been provided and corrected, where required, exclusively by the nomination party. Any mineral lease selected from this Tract and awarded by the Louisiana State Mineral Board shall be without warranty of any kind, either express, implied, or statutory, including, but not limited to, the implied warranties of merchantability and fitness for a particular purpose. Should the mineral lease awarded by the Louisiana State Mineral Board be subsequently modified, cancelled or abrogated due to the existence of conflicting leases, operating agreements, private claims or other future obligations or conditions which may affect all or any portion of the leased Tract, it shall not relieve the Lessee of the obligation to pay any bonus due thereon to the Louisiana State Mineral Board, nor shall the Louisiana State Mineral Board be obligated to refund any consideration paid by the Lessor prior to such modification, cancellation, or abrogation, including, but not limited to, bonuses, rentals and royalties.

NOTE: The State of Louisiana does hereby reserve, and this lease shall be subject to, the imprescriptible right of surface use in the nature of a servitude in favor of the Department of Natural Resources, including its Offices and Commissions, for the sole purpose of implementing, constructing, servicing and maintaining approved coastal zone management and/or restoration projects. Utilization of any and all rights derived under this lease by the mineral lessee, its agents, successors or assigns, shall not interfere with nor hinder the reasonable surface use by the Department of Natural Resources, its Offices or Commissions, as herein above reserved.

Applicant: HAROLD J. ANDERSON, INC.

Bidder	Cash Payment	Price/Acre	Rental	Oil	Gas	Other

Legend

- 06110035
- Blocks
- Active_Leases



TRACT 38649 - Portion of Blocks 51, and 52, Breton Sound Area, Plaquemines Parish, Louisiana

The beds and bottoms of all water bodies belonging to the State of Louisiana located in Blocks 51, and 52, Breton Sound Area, together with any present lands formed by accretion to the shoreline or islands formed therein, located in Plaquemines Parish, Louisiana, owned by and not presently under mineral lease as of November 8, 2006, from the State of Louisiana, the geographical area of which is more fully described as follows: Beginning at a point on the Louisiana Coastline, within Block 51, Breton Sound Area, also being the Southeast corner of State Lease No. 18577, and the Southwest corner of State Lease No. 18549, having Coordinates of X = 2,678,737.27 and Y = 287,488.64; thence along the boundary of said State Lease No. 18549 the following courses: South 88 degrees 58 minutes 31 seconds East 862.87 feet and North 77 degrees 54 minutes 38 seconds East 3,732.79 feet to its Southeast corner, also being the Southwest corner of State Lease No. 12806, as amended, having Coordinates of X = 2,683,250.00 and Y = 288,255.00; thence along the boundary of said State Lease No. 12806 the following courses: South 79 degrees 02 minutes 24 seconds East 2,050.87 feet and along an arc to the left having a radius of 6,073.33 feet and a chord bearing of South 85 degrees 50 minutes 18 seconds East 1,189.46 feet to a point on its South boundary, also being the Northernmost Northwest corner of State Lease No. 17861 having Coordinates of X = 2,686,449.78 and Y = 287,778.76; thence along the boundary of said State Lease No. 17861 the following courses: South 10 degrees 07 minutes 29 seconds West 4,265.18 feet, South 81 degrees 24 minutes 59 seconds East 2,680.02 feet and South 08 degrees 21 minutes 57 seconds West 5,154.85 feet to its Southernmost Southwest corner, also being a point on the South line of Block 52, Breton Sound Area, having Coordinates of X = 2,687,600.00 and Y = 278,080.00; thence West 1,890.00 feet along the South line of said Block 52, to the Southeast corner of State Lease No. 19054, having Coordinates of X = 2,685,710.00 and Y = 278,080.00; thence along the boundary of said State Lease No. 19054 the following courses: North 00 degrees 48 minutes 37 seconds West 3,535.35 feet, North 32 degrees 38 minutes 51 seconds West 2,743.45 feet, South 71 degrees 36 minutes 46 seconds West 4,826.40 feet and South 15 degrees 16 minutes 08 seconds East 4,480.75 feet to a point on the South line of said Block 52 having Coordinates of X = 2,680,780.00 and Y = 278,080.00; thence West 1,037.20 feet along the South line of said Block 52 to a point on the Louisiana Coastline having Coordinates of X = 2,679,742.80 and Y = 278,080.00; thence Northwesterly on a straight line along said Louisiana Coastline to the point of beginning, containing approximately **1,133.88 acres**, all as more particularly outlined on a plat on file in the Office of Mineral Resources, Department of Natural Resources. All bearings, distances and coordinates are based on Louisiana Coordinate System of 1927, (North or South Zone).

NOTE: The above description of the Tract nominated for lease has been provided and corrected, where required, exclusively by the nomination party. Any mineral lease selected from this Tract and awarded by the

Louisiana State Mineral Board shall be without warranty of any kind, either express, implied, or statutory, including, but not limited to, the implied warranties of merchantability and fitness for a particular purpose. Should the mineral lease awarded by the Louisiana State Mineral Board be subsequently modified, cancelled or abrogated due to the existence of conflicting leases, operating agreements, private claims or other future obligations or conditions which may affect all or any portion of the leased Tract, it shall not relieve the Lessee of the obligation to pay any bonus due thereon to the Louisiana State Mineral Board, nor shall the Louisiana State Mineral Board be obligated to refund any consideration paid by the Lessor prior to such modification, cancellation, or abrogation, including, but not limited to, bonuses, rentals and royalties.

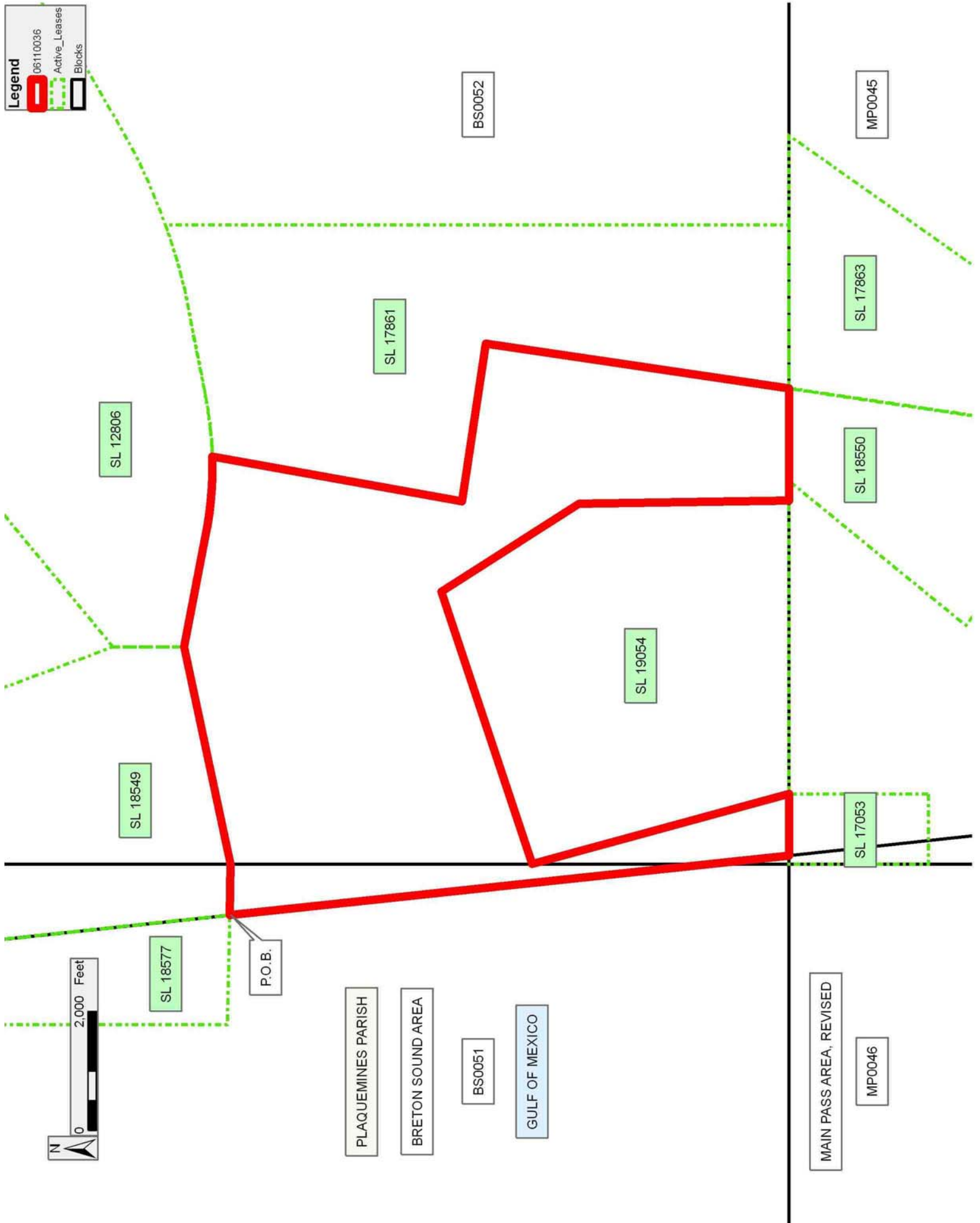
NOTE: The State of Louisiana does hereby reserve, and this lease shall be subject to, the imprescriptible right of surface use in the nature of a servitude in favor of the Department of Natural Resources, including its Offices and Commissions, for the sole purpose of implementing, constructing, servicing and maintaining approved coastal zone management and/or restoration projects. Utilization of any and all rights derived under this lease by the mineral lessee, its agents, successors or assigns, shall not interfere with nor hinder the reasonable surface use by the Department of Natural Resources, its Offices or Commissions, as herein above reserved.

Applicant: HAROLD J. ANDERSON, INC.

Bidder	Cash Payment	Price/Acre	Rental	Oil	Gas	Other

Legend

- 06110036
- Active_Leases
- Blocks



TRACT 38650 - Portion of Block 19, Eugene Island Area, Revised, St. Mary Parish, Louisiana

The beds and bottoms of all water bodies belonging to the State of Louisiana located in Block 19, Eugene Island Area, Revised, together with any present lands formed by accretion to the shoreline or islands formed therein, located in St. Mary Parish, Louisiana, owned by and not presently under mineral lease and cross hatched as of November 8, 2006, from the State of Louisiana, the geographical area of which is more fully described as follows: Beginning at a point on the West boundary of said Block 19, Eugene Island Area, Revised, and being the Northeast corner of State Lease No. 16556, having Coordinates of X = 1,924,889.20 and Y = 254,394.00; Thence South 78 degrees 28 minutes 13 seconds East 3,113.54 feet to the Northwest corner of State Lease No. 18240 having Coordinates of X = 1,927,939.91 and Y = 253,771.68; Thence South 6,157.80 feet along the West Boundary of said State Lease No. 18240 to its Southwest corner having Coordinates of X = 1,927,939.91 and Y = 247,613.88; Thence South 850.02 feet to a point on the three nautical mile line having Coordinates of X = 1,927,939.91 and Y = 246,763.86; Thence Northwesterly on an arc having a radius of 18,240.60 feet and a center at X = 1,933,172.00 and Y = 264,238.00 to a point on the West boundary of said Block 19, also being the Southeast corner of said State Lease No. 16556, having Coordinates of X = 1,924,889.20 and Y = 247,986.43; Thence North 6,407.57 feet along the West boundary of Block 19 and East boundary of said State Lease No. 16556 to the point of beginning and containing approximately **473.50 acres, LESS AND EXCEPT** that portion thereof, if any, lying seaward of the line three nautical miles from the coast line of Louisiana, as said three mile line has been decreed by the Supreme Court of the United States, as determined by a Special Master appointed therein, in litigation styled **United States v. State of Louisiana et al No. 9 Original**, in 1975, all as more particularly outlined on a plat in the Office of Mineral Resources, Department of Natural Resources. All bearings, distances and coordinates are based on the Louisiana Coordinate System of 1927, (South Zone).

NOTE: The above description of the Tract nominated for lease has been provided and corrected, where required, exclusively by the nomination party. Any mineral lease selected from this Tract and awarded by the Louisiana State Mineral Board shall be without warranty of any kind, either express, implied, or statutory, including, but not limited to, the implied warranties of merchantability and fitness for a particular purpose. Should the mineral lease awarded by the Louisiana State Mineral Board be subsequently modified, cancelled or abrogated due to the existence of conflicting leases, operating agreements, private claims or other future obligations or conditions which may affect all or any portion of the leased Tract, it shall not relieve the Lessee of the obligation to pay any bonus due thereon to the Louisiana State Mineral Board, nor shall the Louisiana State Mineral Board be obligated to refund any consideration paid by the Lessor prior to such modification, cancellation, or abrogation, including, but not limited to, bonuses, rentals and royalties.




NOTE: The State of Louisiana does hereby reserve, and this lease shall be subject to, the imprescriptible right of surface use in the nature of a servitude in favor of the Department of Natural Resources, including its Offices and Commissions, for the sole purpose of implementing, constructing, servicing and maintaining approved coastal zone management and/or restoration projects. Utilization of any and all rights derived under this lease by the mineral lessee, its agents, successors or assigns, shall not interfere with nor hinder the reasonable surface use by the Department of Natural Resources, its Offices or Commissions, as herein above reserved.

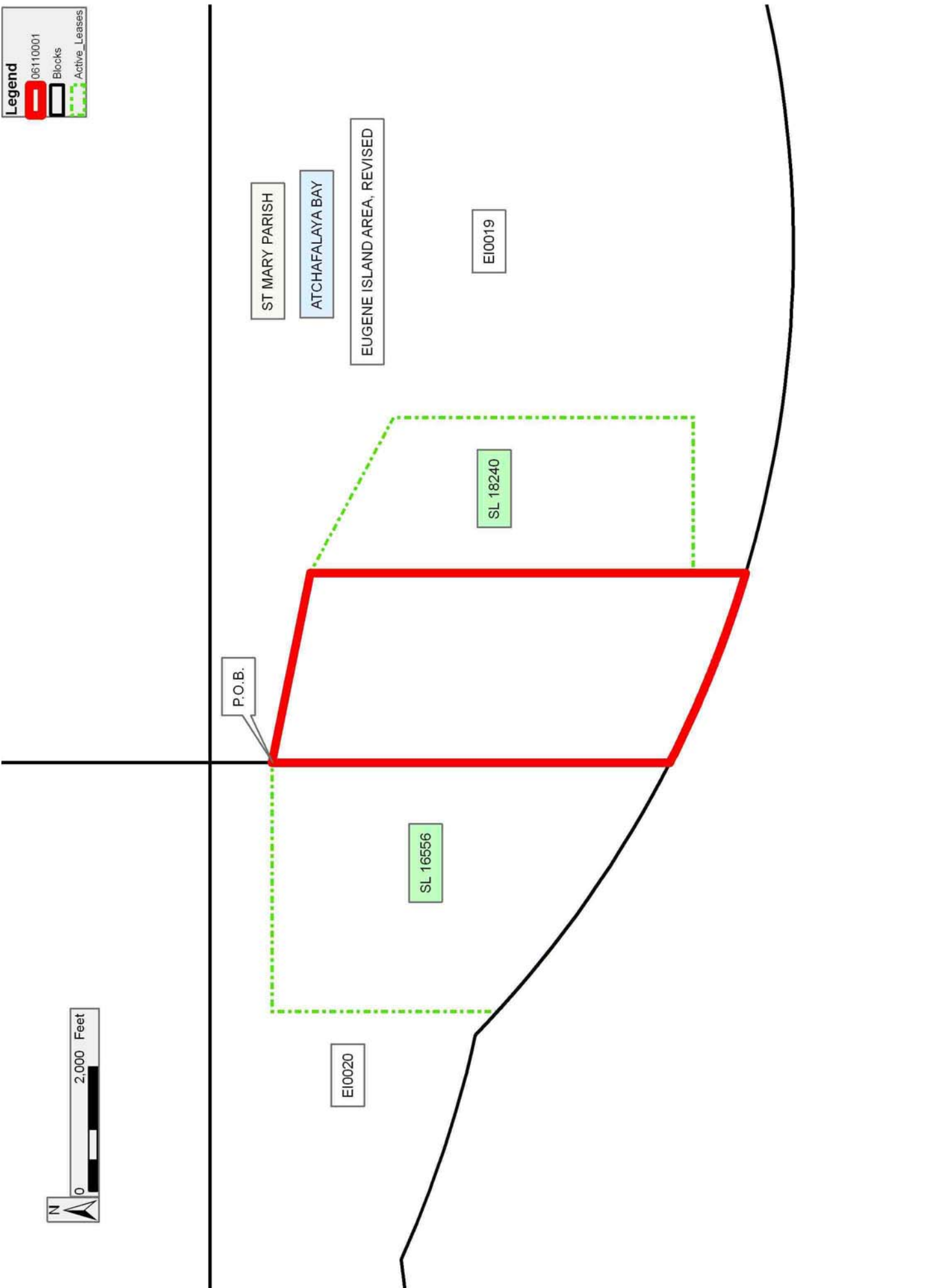
NOTE: The Department of Wildlife and Fisheries has designated certain areas in the coastal waters of the State of Louisiana as Oyster Seed Bed Areas. The exact location of those Seed Bed Areas must be obtained from the Department of Wildlife and Fisheries and any work done under a mineral lease from the State of Louisiana may necessarily be conducted in conformity with the rules and regulations promulgated by the said Department of Wildlife and Fisheries for Oyster Seed Bed Areas.

Applicant: CAMRYN OIL INVESTMENTS

Bidder	Cash Payment	Price/Acre	Rental	Oil	Gas	Other

Legend

-  06110001
-  Blocks
-  Active_Leases



TRACT 38651 - Portion of Blocks 70, and 71, Main Pass Area, Revised, Plaquemines Parish, Louisiana

The beds and bottoms of all water bodies belonging to the State of Louisiana located in Blocks 70, and 71, Main Pass Area, Revised, together with any present lands formed by accretion to the shoreline or islands formed therein, located in Plaquemines Parish, Louisiana, owned by and not presently under mineral lease as of November 8, 2006, from the State of Louisiana, the geographical area of which is more fully described as follows: Beginning at a point in Block 70 Main Pass Area and the Southeast corner of State Lease No. 17815 having Coordinates of X = 2,745,977.50 and Y = 218,325.00; thence North 2,319.35 feet along the East line of said State Lease No. 17815 to a point having Coordinates of X = 2,745,977.50 and Y = 220,644.35; thence East 15,802.50 feet through the East line of said Block 70 into Block 71 Main Pass Area, also being a point on the West boundary of State Lease No. 6894 having Coordinates of X = 2,761,780.00 and Y = 220,644.35; thence South 5,672.35 feet along the East line of said Block 71 and the West boundary of said State Lease No. 6894 to its Southwest corner having Coordinates of X = 2,761,780.00 and Y = 214,972.00; thence West 72.00 feet along the South line of said Block 71 to the Northeast corner of State Lease No. 15386, as amended having Coordinates of X = 2,761,708.00 and Y = 214,972.00; thence continue West 4,729.00 feet along the South line of said Block 71 and the North line of said State Lease No. 15386 to its Northwest corner having Coordinates of X = 2,756,979.00 and Y = 214,972.00; thence continue West 13,679.00 feet along the South line of said Block 71 through its Southwest corner into said Block 70 along its South line to a point having Coordinates of X = 2,743,300.00 and Y = 214,972.00; thence North 3,353.00 feet to a point on the South line of said State Lease No. 17815 having Coordinates of X = 2,743,300.00 and Y = 218,325.00; thence East 2,677.50 feet along the South line of said State Lease No. 17815 to the Point of Beginning, containing approximately **2,263.89 acres**, all as more particularly outlined on a plat on file in the Office of Mineral Resources, Department of Natural Resources. All bearings, distances and coordinates are based on Louisiana Coordinate System of 1927, (North or South Zone).

NOTE: The above description of the Tract nominated for lease has been provided and corrected, where required, exclusively by the nomination party. Any mineral lease selected from this Tract and awarded by the Louisiana State Mineral Board shall be without warranty of any kind, either express, implied, or statutory, including, but not limited to, the implied warranties of merchantability and fitness for a particular purpose. Should the mineral lease awarded by the Louisiana State Mineral Board be subsequently modified, cancelled or abrogated due to the existence of conflicting leases, operating agreements, private claims or other future obligations or conditions which may affect all or any portion of the leased Tract, it shall not relieve the Lessee of the obligation to pay any bonus due thereon to the Louisiana State Mineral Board, nor shall the Louisiana State Mineral Board be obligated to refund any consideration

paid by the Lessor prior to such modification, cancellation, or abrogation, including, but not limited to, bonuses, rentals and royalties.

NOTE: The State of Louisiana does hereby reserve, and this lease shall be subject to, the imprescriptible right of surface use in the nature of a servitude in favor of the Department of Natural Resources, including its Offices and Commissions, for the sole purpose of implementing, constructing, servicing and maintaining approved coastal zone management and/or restoration projects. Utilization of any and all rights derived under this lease by the mineral lessee, its agents, successors or assigns, shall not interfere with nor hinder the reasonable surface use by the Department of Natural Resources, its Offices or Commissions, as herein above reserved.

Applicant: BARKER COMPANIES

Bidder	Cash Payment	Price/Acre	Rental	Oil	Gas	Other

Legend

- 06110028
- Active_Leases
- Blocks

