

TRACT 37939 - Caddo Parish, Louisiana

A certain Tract of land, excluding the beds and bottoms of all navigable waters, belonging to and not presently under mineral lease from Caddo Parish Commission on November 9, 2005, being more fully described as follows: Tract A: The West 59.5 acres of the North Half of the Northeast Quarter of Section 4, T16N-R15W, Caddo Parish, Louisiana, being also the West 59.5 acres of the Resubdivision of Country Manor, Unit 1, as per map recorded in Conveyance Book 1200, Page 47 of the Records of Caddo Parish, Louisiana, excluding Lot 11 of said Subdivision therefrom being more particularly described as follows: Beginning at a point 40 feet South of and 867.7 feet West of the Northeast corner of said Section 4, proceed South 0 degrees 42 feet East along the common line of Lots Ten (10) and Eleven (11) of said Country Manor Subdivision a distance of 272 feet; thence North 89 degrees 56 minutes 45 seconds East a distance of 408.82 feet; thence South 0 degrees 42 feet East a distance 990 feet; thence South 89 degrees 56 minutes 45 seconds West a distance of 793.82 feet; thence North 0 degrees 42 feet West a distance of 30 feet; thence South 89 degrees 56 minutes 45 seconds West a distance of 1382.92 feet; thence North 0 degrees 43 feet West a distance of 1233.65 feet to the South right of Way of Shirley Frances Road; thence East a distance 1765.0 feet to the point of beginning **LESS AND EXCEPT** A 13.774 acre, more or less, tract of land in the Northwest Quarter of the Northeast Quarter of Section 4, Township 16 North, Range 15 West, Caddo Parish, Louisiana and being more particularly described as follows: Commence at a Railroad Spike set for corner at the Northwest corner of the Northwest Quarter of the Northeast Quarter of said Section 4; thence run South 0 degrees 48 minutes 35 seconds West along the Centerline of said Section 4 to the South Right of Way of the Shirley Frances Road, a distance of 40.00 feet, to a 1/2 inch Iron Rod set for corner; thence continue South 0 degrees 48 minutes 35 seconds West along the Centerline of Said Section 4, a distance of 483.10 feet, to a 1/2 inch Iron Rod set for corner and also being the Point of Beginning of the tract herein described; thence run South 88 degrees 44 minutes 44 seconds East a distance of 800.00 feet, to a 1/2 inch Iron Rod set for corner, thence run South 0 degrees 48 minutes 35 seconds West a distance of 750.00 feet, to a 1/2 inch Iron Rod set for corner; thence run North 88 degrees 44 minutes 44 seconds West to the Centerline of said Section 4, a distance of 800.00 feet, to a 1/2 inch Iron Rod set for corner; thence run North 0 degrees 48 minutes 35 seconds East along the Centerline of said Section 4, a distance of 750.00 feet to the Point of Beginning, containing approximately 45.726 acres; Tract B: That certain tract of land belonging to the Caddo Parish Commission, being more fully described as follows: all of the rights, title and interest in any highway, right of ways, roads, or other lands owned by and not presently under mineral lease from the Caddo Parish Commission, situated in Sections 3, 4, 9 and 10, Township 16 North, Range 15 West, Caddo Parish, Louisiana, **LESS AND EXCEPT** Tract A described above, containing approximately 44.565 acres. The above two tracts containing an aggregate of approximately **90.291 acres**, all as more particularly outlined on a plat on file in the Office of Mineral Resources, Department of Natural Resources. The

description is based on information provided by the State Agency regarding location and ownership of surface and mineral rights. All bearings, distances and coordinates, if applicable, are based on Louisiana Coordinate System of 1927, (North or South Zone).

NOTE: The above description of the Tract nominated for lease has been provided and corrected, where required, exclusively by the nomination party. Any mineral lease selected from this Tract and awarded by the Louisiana State Mineral Board shall be without warranty of any kind, either express, implied, or statutory, including, but not limited to, the implied warranties of merchantability and fitness for a particular purpose. Should the mineral lease awarded by the Louisiana State Mineral Board be subsequently modified, cancelled or abrogated due to the existence of conflicting leases, operating agreements, private claims or other future obligations or conditions which may affect all or any portion of the leased Tract, it shall not relieve the Lessee of the obligation to pay any bonus due thereon to the Louisiana State Mineral Board, nor shall the Louisiana State Mineral Board be obligated to refund any consideration paid by the Lessor prior to such modification, cancellation, or abrogation, including, but not limited to, bonuses, rentals and royalties.

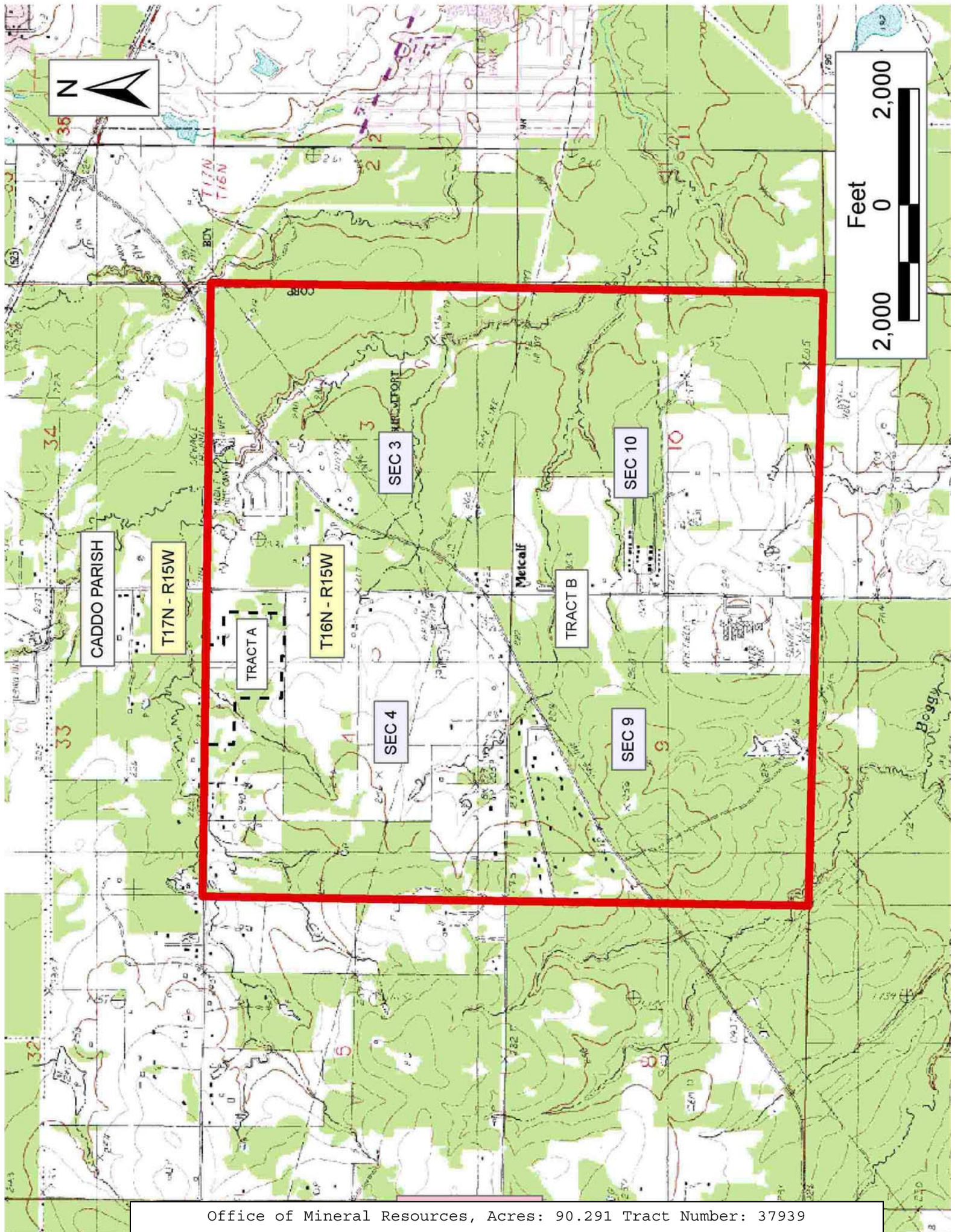
NOTE: No surface use of the Lessor's property for drilling or any other operations without the prior written permission of Lessor.

NOTE: There will be a minimum of not less than 25% royalty and \$200.00 per acre bonus.

NOTE: The lease will contain vertical and horizontal pugh clauses as submitted in Resolution on file in the Office of Mineral Resources.

Applicant: ST. MARY LAND & EXPLORATION COMPANY to Agency and by Resolution from the Caddo Parish Commission authorizing the Mineral Board to act in its behalf

Bidder	Cash Payment	Price/Acre	Rental	Oil	Gas	Other



TRACT 37940 - Calcasieu Parish School Board - Calcasieu Parish, Louisiana

The State Mineral Board acting on behalf of the Calcasieu Parish School Board, pursuant to Resolution(s) adopted by that (those) body(ies) and in accordance with Louisiana Revised Statutes 30:121-136 and 151-156, as amended, and Article XIV, Section 16(A)(9) and (B) of the Louisiana Constitution of 1974, as same may be continued and promulgated in proper statutory form and, further, amended from time to time, advertises the lands not under mineral lease on November 9, 2005, excluding the beds and bottoms of all navigable water bodies located within the following: All or a portion of Section 16, Township 10 South, Range 13 West in Calcasieu Parish, Louisiana, All of Section 16 of Township 10 South, Range 13 West, situated in Calcasieu Parish, Louisiana, containing approximately **640 acres**, all as more particularly outlined on a plat on file in the Office of Mineral Resources, Department of Natural Resources. All bearings, distances and coordinates are based on Louisiana Coordinate System of 1927, (North or South Zone).

NOTE: The above description of the Tract nominated for lease has been provided and corrected, where required, exclusively by the nomination party. Any mineral lease selected from this Tract and awarded by the Louisiana State Mineral Board shall be without warranty of any kind, either express, implied, or statutory, including, but not limited to, the implied warranties of merchantability and fitness for a particular purpose. Should the mineral lease awarded by the Louisiana State Mineral Board be subsequently modified, cancelled or abrogated due to the existence of conflicting leases, operating agreements, private claims or other future obligations or conditions which may affect all or any portion of the leased Tract, it shall not relieve the Lessee of the obligation to pay any bonus due thereon to the Louisiana State Mineral Board, nor shall the Louisiana State Mineral Board be obligated to refund any consideration paid by the Lessor prior to such modification, cancellation, or abrogation, including, but not limited to, bonuses, rentals and royalties.

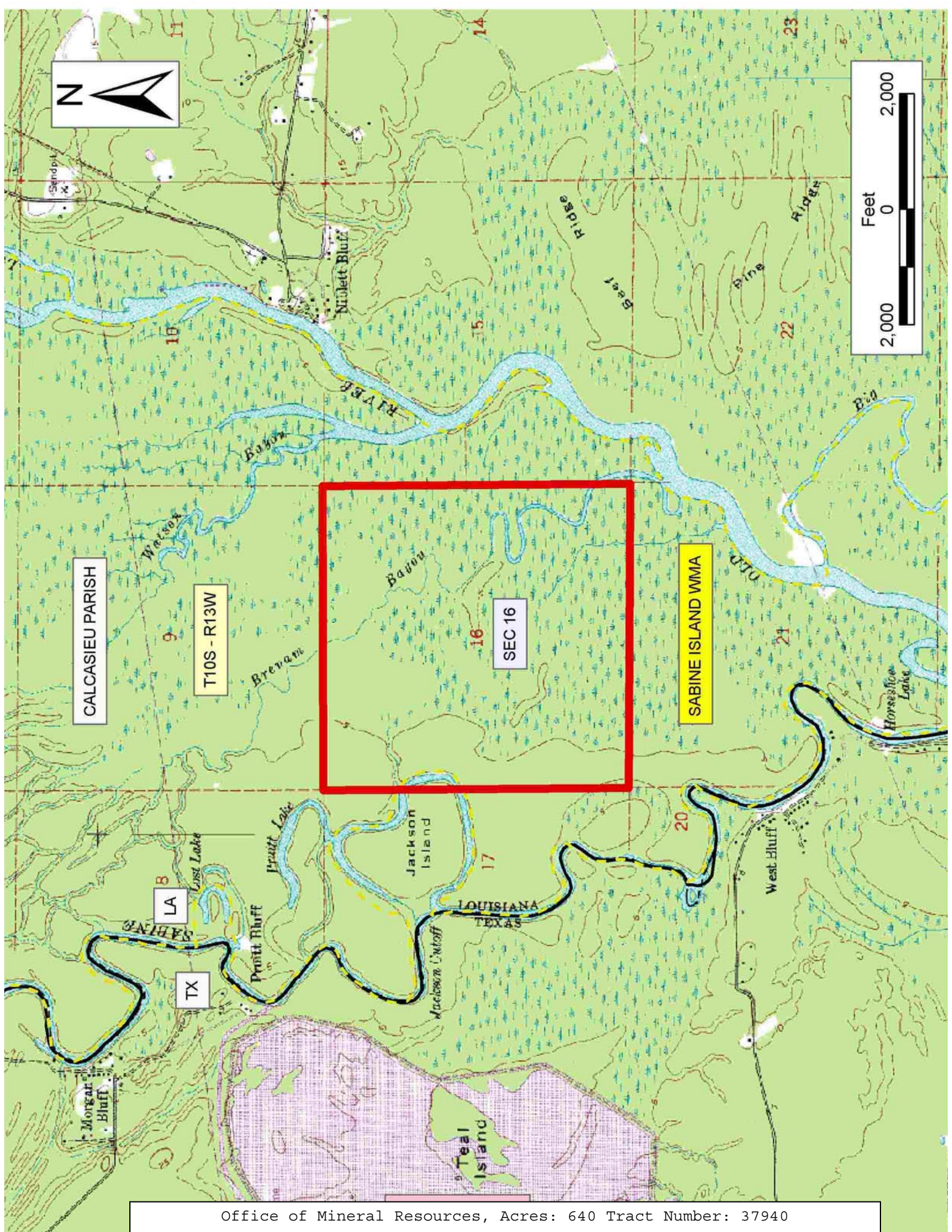
NOTE: This tract is located within the boundaries of a wildlife management area or refuge and any operations conducted thereon in conjunction with this mineral lease may be subject to rules and regulations promulgated by the Department of Wildlife and Fisheries for the protection of fish, birds and other wildlife including, but not necessarily limited to, the following:

1. No activities will be allowed without written authorization from the Louisiana Department of Wildlife and Fisheries. All projects will be coordinated and approved by the appropriate WMA Supervisor prior to any activities on the wildlife management area.
2. Proposed projects will be evaluated on a case by case basis. Modifications to proposed projects may be required including, but not limited to, access routes, spoil placement, well sites, flow lines and other appurtenant structures required by the Louisiana Department of Wildlife and Fisheries.

3. Compensatory mitigation will be required to offset unavoidable wetland impacts.
4. Removal of all structures, facilities, and equipment will be required within 120 days of abandonment unless otherwise agreed to by the Department of Wildlife and Fisheries.
5. No activities will be allowed during the hunting season unless approved by the Department.
6. Compliance with the said WMA regulations will be required unless otherwise specified by the Department.
7. Prior to submitting applications for wetland permits to Federal and State permitting agencies the lease holder shall coordinate project details with the Louisiana Department of Wildlife and Fisheries, Fur and Refuge Division. Contact person for the Department will be Mike Windham at (504) 568-5886.

Applicant: FRANZ P. SCHOEFFLER to Agency and by Resolution from the Calcasieu Parish School Board authorizing the Mineral Board to act in its behalf

Bidder	Cash Payment	Price/Acre	Rental	Oil	Gas	Other



CALCASIEU PARISH

T10S - R13W

SEC 16

SABINE ISLAND WMA