

**TRACT 37948 - Red River Parish, LOUISIANA**

All land, LESS AND EXCEPT land now or formerly constituting the beds and bottoms of any water body of whatever description and nature, all belonging to the State of Louisiana located within the geographical boundaries of the Bayou Pierre Wildlife Management Area and not presently under mineral lease by the State of Louisiana as of November 9, 2005, the area of which is set forth as follows: Beginning at a point having Coordinates of X = 1,662,100.00 and Y = 565,700.00; thence East 4,984.00 feet to a point having Coordinates of X = 1,667,084.00 and Y = 565,700.00; thence South 3,046.00 feet to a point on the North line of State Lease No. 17914, having Coordinates of X = 1,667,084.00 and Y = 562,654.00; thence West 541.00 feet along said North line of said State Lease No. 17914 to its Northwest Corner, having Coordinates of X = 1,666,543.00 and Y = 562,654.00; thence West 4,443.00 feet to a point having Coordinates of X = 1,662,100.00 and Y = 562,654.00; thence North 3,046.00 feet to the point of beginning, **LESS AND EXCEPT** all that portion of the above described tract lying outside the boundaries of the Bayou Pierre Wildlife Management Area, containing approximately **281 acres**, all as more particularly outlined on a plat on file in the Office of Mineral Resources, Department of Natural Resources. All bearings, distances and coordinates are based on Louisiana Coordinate System of 1927, (North or South Zone).

NOTE: The above description of the Tract nominated for lease has been provided and corrected, where required, exclusively by the nomination party. Any mineral lease selected from this Tract and awarded by the Louisiana State Mineral Board shall be without warranty of any kind, either express, implied, or statutory, including, but not limited to, the implied warranties of merchantability and fitness for a particular purpose. Should the mineral lease awarded by the Louisiana State Mineral Board be subsequently modified, cancelled or abrogated due to the existence of conflicting leases, operating agreements, private claims or other future obligations or conditions which may affect all or any portion of the leased Tract, it shall not relieve the Lessee of the obligation to pay any bonus due thereon to the Louisiana State Mineral Board, nor shall the Louisiana State Mineral Board be obligated to refund any consideration paid by the Lessor prior to such modification, cancellation, or abrogation, including, but not limited to, bonuses, rentals and royalties.

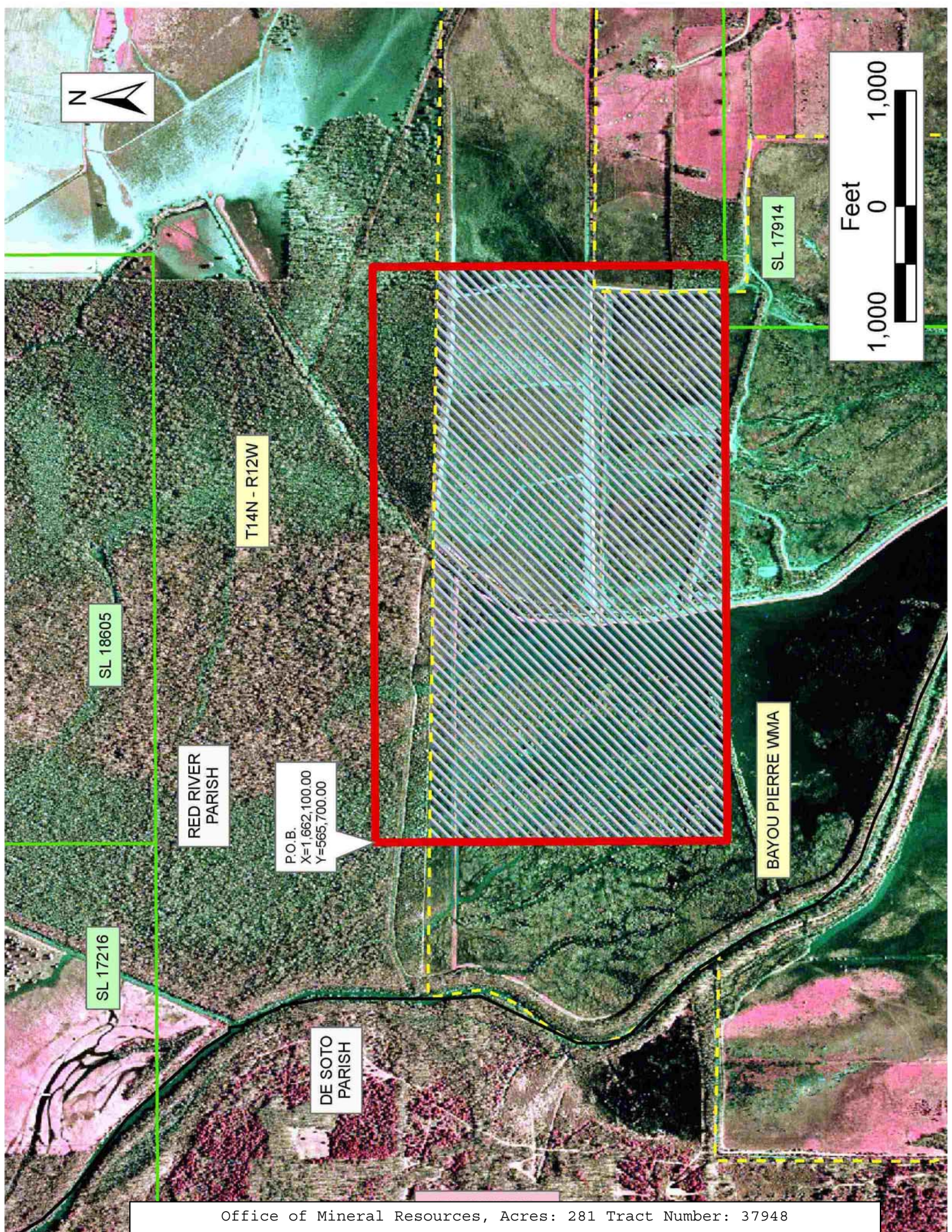
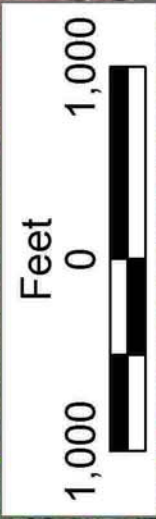
NOTE: The Office of Mineral Resources will require a minimum bonus of \$150 per acre and a minimum royalty of 25%.

NOTE: The mineral lease is located within the Bayou Pierre WMA under the jurisdiction of the Louisiana Department of Wildlife and Fisheries which has promulgated rules and regulations for the protection of game and wildlife on the aforesaid Tract and, therefore, shall be subject to said rules and regulations, a copy of which shall be attached to the mineral lease. In addition to the specific rules and regulations applicable, the following shall apply regarding operations under this mineral lease:

1. No activities will be allowed without written authorization from the Louisiana Department of Wildlife and Fisheries.
2. Projects will be evaluated on a case by case basis. Modifications to projects may be required including, but not limited to, access routes, spoil placement, well sites, flow lines and other appurtenant structures.
3. Mitigation will be required to offset avoidable wetland impacts.
4. Removal of all structures, facilities and equipment will be required within 120 days of abandonment unless otherwise agreed to by the Louisiana Department of Wildlife and Fisheries.
5. No activities will be allowed during the hunting season unless approved by the Department.
6. Compliance with the said WMA regulations will be required unless otherwise specified by the Department.
7. Prior to submitting applications for wetland permits to Federal and State permitting agencies the lease holder shall coordinate project details with the Louisiana Department of Wildlife and Fisheries, Fur and Refuge Division. Contact person for the Department will be Mike Windham at (504) 568-5886.

Applicant: STROUD PETROLEUM, INC.

Bidder	Cash Payment	Price/Acre	Rental	Oil	Gas	Other



N

Feet  
0 1,000  
1,000

SL 18605

T14N - R12W

SL 17914

RED RIVER  
PARISH

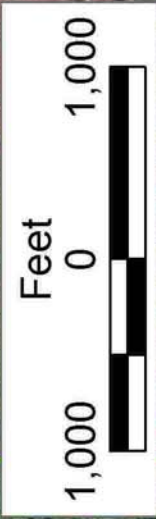
P.O.B.  
X=1,662,100.00  
Y=565,700.00



BAYOU PIERRE WMA

SL 17216

DE SOTO  
PARISH



SL 18605

T14N - R12W

SL 17914

RED RIVER  
PARISH

P.O.B.  
X=1,662,100.00  
Y=565,700.00



BAYOU PIERRE WMA

SL 17216

DE SOTO  
PARISH