

**TRACT 37930 - Cameron Parish, Louisiana**

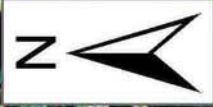
All of the lands now or formerly constituting the beds and bottoms of all water bodies of every nature and description the title of which vests in the State of Louisiana, together with all islands arising therein and other lands formed by accretion or by reliction, where allowed by law, excepting tax adjudicated lands, and not presently under mineral lease on November 9, 2005, situated in Cameron Parish, Louisiana, and more particularly described as follows: Beginning at a point having Coordinates of X = 1,570,803.00 and Y = 441,247.00; thence East 10,018.00 feet to a point having Coordinates of X = 1,580,821.00 and Y = 441,247.00; thence South 10,435.00 feet to a point having Coordinates of X = 1,580,821.00 and Y = 430,812.00; thence West 10,018.00 feet to a point having Coordinates of X = 1,570,803.00 and Y = 430,812.00; thence North 10,435.00 feet to the point of beginning, containing approximately **1,850 acres**, all as more particularly outlined on a plat on file in the Office of Mineral Resources, Department of Natural Resources. All bearings, distances and coordinates are based on Louisiana Coordinate System of 1927, (North or South Zone), where applicable.

NOTE: The above description of the Tract nominated for lease has been provided and corrected, where required, exclusively by the nomination party. Any mineral lease selected from this Tract and awarded by the Louisiana State Mineral Board shall be without warranty of any kind, either express, implied, or statutory, including, but not limited to, the implied warranties of merchantability and fitness for a particular purpose. Should the mineral lease awarded by the Louisiana State Mineral Board be subsequently modified, cancelled or abrogated due to the existence of conflicting leases, operating agreements, private claims or other future obligations or conditions which may affect all or any portion of the leased Tract, it shall not relieve the Lessee of the obligation to pay any bonus due thereon to the Louisiana State Mineral Board, nor shall the Louisiana State Mineral Board be obligated to refund any consideration paid by the Lessor prior to such modification, cancellation, or abrogation, including, but not limited to, bonuses, rentals and royalties.

NOTE: The State of Louisiana does hereby reserve, and this lease shall be subject to, the imprescriptible right of surface use in the nature of a servitude in favor of the Department of Natural Resources, including its Offices and Commissions, for the sole purpose of implementing, constructing, servicing and maintaining approved coastal zone management and/or restoration projects. Utilization of any and all rights derived under this lease by the mineral lessee, its agents, successors or assigns, shall not interfere with nor hinder the reasonable surface use by the Department of Natural Resources, its Offices or Commissions, as herein above reserved.

Applicant: HAROLD J. ANDERSON, INC.

Bidder	Cash Payment	Price/Acre	Rental	Oil	Gas	Other



CAMERON PARISH

ROUND LAKE

T14S - R3W

COLLICON LAKE



P.O.B.  
X = 1,570,803.00  
Y = 441,247.00

GRAND LAKE

**TRACT 37931 - Cameron Parish, Louisiana**

All of the lands now or formerly constituting the beds and bottoms of all water bodies of every nature and description the title of which vests in the State of Louisiana, together with all islands arising therein and other lands formed by accretion or by reliction, where allowed by law, excepting tax adjudicated lands, and not presently under mineral lease on November 9, 2005, situated in Cameron Parish, Louisiana, and more particularly described as follows: Beginning at a point having Coordinates of X = 1,549,933.00 and Y = 441,247.00; thence South 10,435.00 feet to a point having Coordinates of X = 1,549,933.00 and Y = 430,812.00; thence West 10,435.00 feet to a point having Coordinates of X = 1,539,498.00 and Y = 430,812.00; thence North 10,435.00 feet to a point having Coordinates of X = 1,539,498.00 and Y = 441,247.00; thence East 10,435.00 feet to the point of beginning, containing approximately **2,499 acres**, all as more particularly outlined on a plat on file in the Office of Mineral Resources, Department of Natural Resources. All bearings, distances and coordinates are based on Louisiana Coordinate System of 1927, (North or South Zone), where applicable.

NOTE: The above description of the Tract nominated for lease has been provided and corrected, where required, exclusively by the nomination party. Any mineral lease selected from this Tract and awarded by the Louisiana State Mineral Board shall be without warranty of any kind, either express, implied, or statutory, including, but not limited to, the implied warranties of merchantability and fitness for a particular purpose. Should the mineral lease awarded by the Louisiana State Mineral Board be subsequently modified, cancelled or abrogated due to the existence of conflicting leases, operating agreements, private claims or other future obligations or conditions which may affect all or any portion of the leased Tract, it shall not relieve the Lessee of the obligation to pay any bonus due thereon to the Louisiana State Mineral Board, nor shall the Louisiana State Mineral Board be obligated to refund any consideration paid by the Lessor prior to such modification, cancellation, or abrogation, including, but not limited to, bonuses, rentals and royalties.

NOTE: The State of Louisiana does hereby reserve, and this lease shall be subject to, the imprescriptible right of surface use in the nature of a servitude in favor of the Department of Natural Resources, including its Offices and Commissions, for the sole purpose of implementing, constructing, servicing and maintaining approved coastal zone management and/or restoration projects. Utilization of any and all rights derived under this lease by the mineral lessee, its agents, successors or assigns, shall not interfere with nor hinder the reasonable surface use by the Department of Natural Resources, its Offices or Commissions, as herein above reserved.

Applicant: HAROLD J. ANDERSON, INC.

Bidder	Cash Payment	Price/Acre	Rental	Oil	Gas	Other

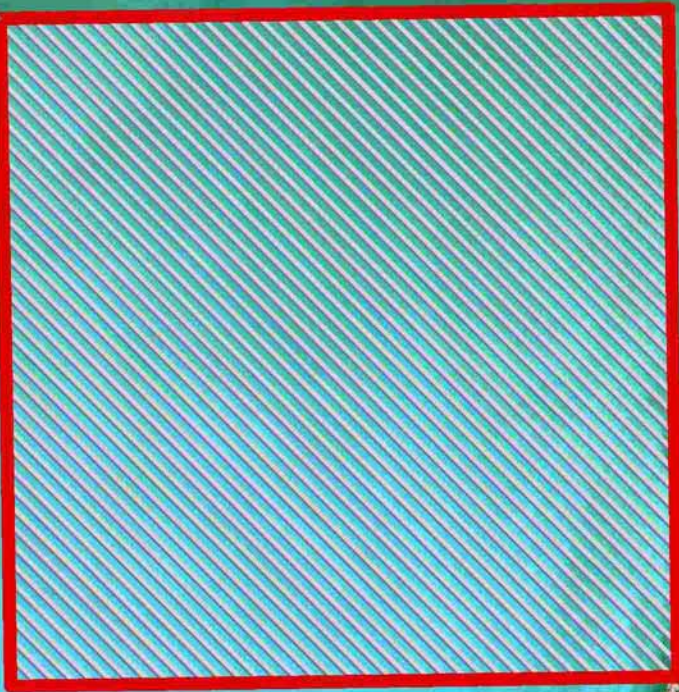


GRAND LAKE



P.O.B.  
X = 1,549,933.00  
Y = 441,247.00

CAMERON PARISH



T14S - R4W

**TRACT 37932 - Cameron Parish, Louisiana**

All of the lands now or formerly constituting the beds and bottoms of all water bodies of every nature and description the title of which vests in the State of Louisiana, together with all islands arising therein and other lands formed by accretion or by reliction, where allowed by law, excepting tax adjudicated lands, and not presently under mineral lease on November 9, 2005, situated in Cameron Parish, Louisiana, and more particularly described as follows: Beginning at a point having Coordinates of X = 1,549,933.00 and Y = 441,247.00; thence East 10,435.00 feet to a point having Coordinates of X = 1,560,368.00 and Y = 441,247.00; thence South 10,435.00 feet to a point having Coordinates of X = 1,560,368.00 and Y = 430,812.00; thence West 10,435.00 feet to a point having Coordinates of X = 1,549,933.00 and Y = 430,812.00; thence North 10,435.00 feet to the point of beginning, containing approximately **2,499.75 acres**, all as more particularly outlined on a plat on file in the Office of Mineral Resources, Department of Natural Resources. All bearings, distances and coordinates are based on Louisiana Coordinate System of 1927, (North or South Zone), where applicable.

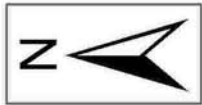
NOTE: The above description of the Tract nominated for lease has been provided and corrected, where required, exclusively by the nomination party. Any mineral lease selected from this Tract and awarded by the Louisiana State Mineral Board shall be without warranty of any kind, either express, implied, or statutory, including, but not limited to, the implied warranties of merchantability and fitness for a particular purpose. Should the mineral lease awarded by the Louisiana State Mineral Board be subsequently modified, cancelled or abrogated due to the existence of conflicting leases, operating agreements, private claims or other future obligations or conditions which may affect all or any portion of the leased Tract, it shall not relieve the Lessee of the obligation to pay any bonus due thereon to the Louisiana State Mineral Board, nor shall the Louisiana State Mineral Board be obligated to refund any consideration paid by the Lessor prior to such modification, cancellation, or abrogation, including, but not limited to, bonuses, rentals and royalties.

NOTE: The State of Louisiana does hereby reserve, and this lease shall be subject to, the imprescriptible right of surface use in the nature of a servitude in favor of the Department of Natural Resources, including its Offices and Commissions, for the sole purpose of implementing, constructing, servicing and maintaining approved coastal zone management and/or restoration projects. Utilization of any and all rights derived under this lease by the mineral lessee, its agents, successors or assigns, shall not interfere with nor hinder the reasonable surface use by the Department of Natural Resources, its Offices or Commissions, as herein above reserved.

Applicant: HAROLD J. ANDERSON, INC.

Bidder	Cash Payment	Price/Acre	Rental	Oil	Gas	Other

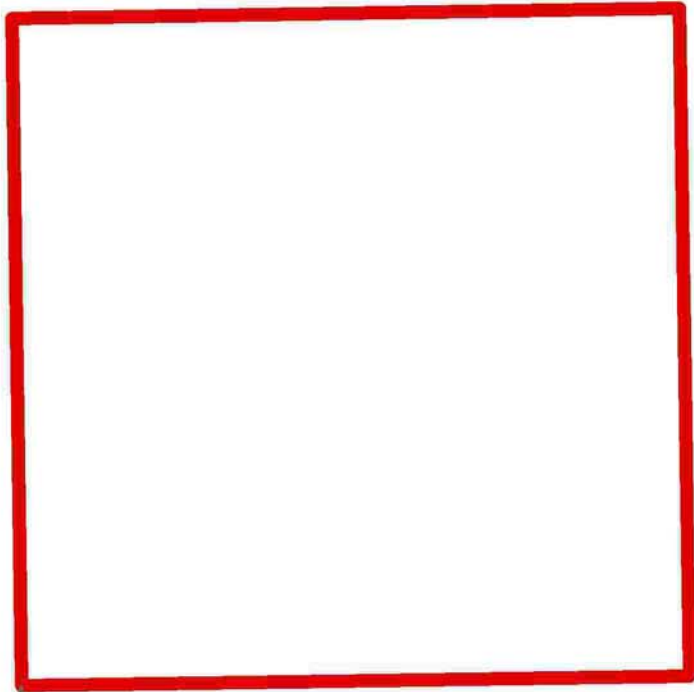




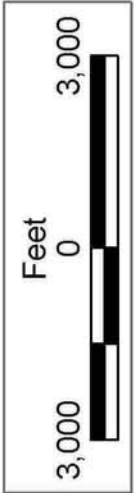
CAMERON PARISH

GRAND LAKE

P.O.B.  
X = 1,549,933.00  
Y = 441,247.00



T14S - R4W



**TRACT 37933 - Vermilion Parish, Louisiana**

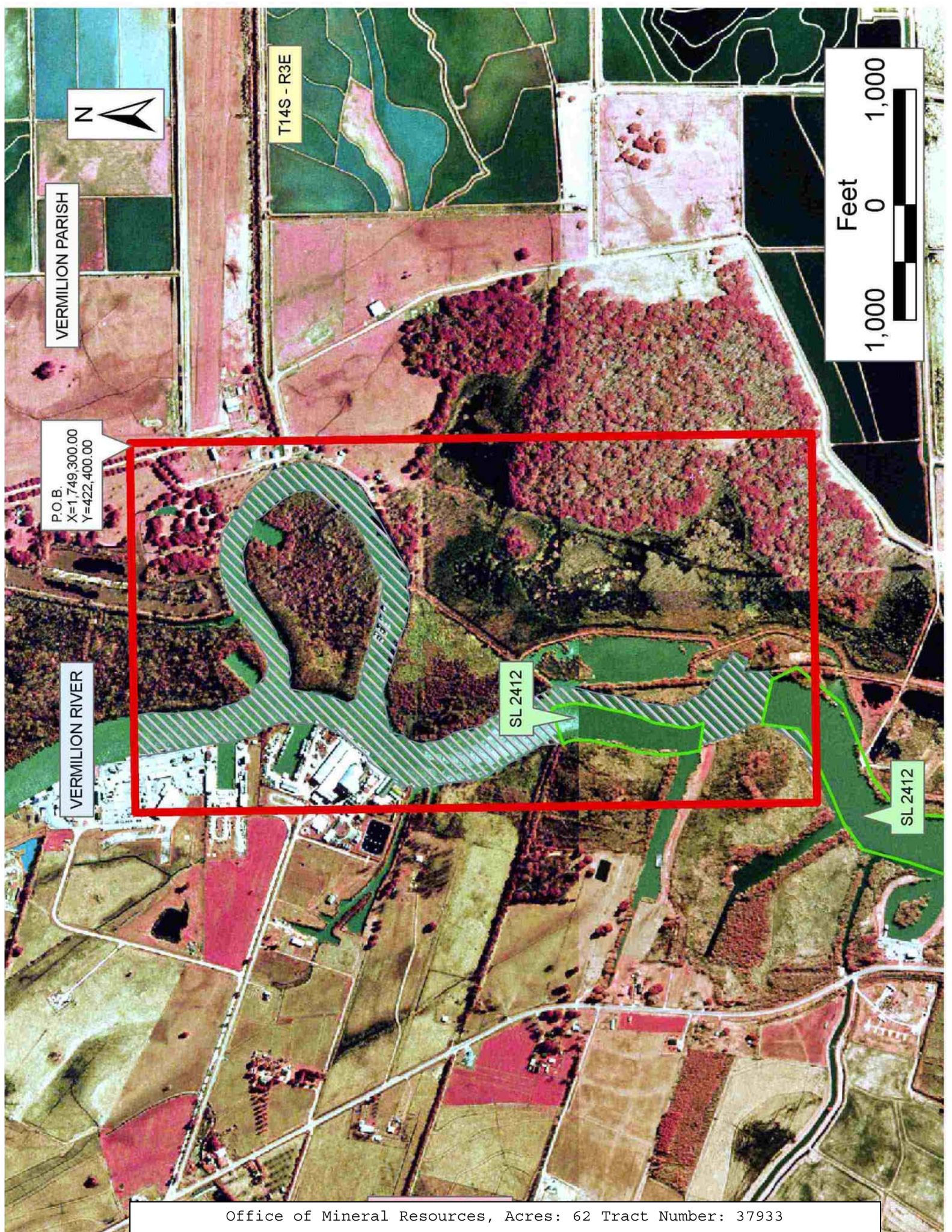
All of the lands now or formerly constituting the beds and bottoms of all water bodies of every nature and description the title of which vests in the State of Louisiana, together with all islands arising therein and other lands formed by accretion or by reliction, where allowed by law, excepting tax adjudicated lands, and not presently under mineral lease on November 9, 2005, situated in Vermilion Parish, Louisiana, and more particularly described as follows: Beginning at a point having Coordinates of X = 1,749,300.00 and Y = 422,400.00; thence South 5,900.00 feet to a point having Coordinates of X = 1,749,300.00 and Y = 416,500.00; thence West 3,200.00 feet to a point having Coordinates of X = 1,746,100.00 and Y = 416,500.00; thence North 5,900.00 feet to a point having Coordinates of X = 1,746,100.00 and Y = 422,400.00; thence East 3,200.00 feet to the point of beginning, **LESS AND EXCEPT** any portion of State Lease No. 2412, as amended, that lie within the above described tract, containing approximately **62 acres**, all as more particularly outlined on a plat on file in the Office of Mineral Resources, Department of Natural Resources. All bearings, distances and coordinates are based on Louisiana Coordinate System of 1927, (North or South Zone), where applicable.

NOTE: The above description of the Tract nominated for lease has been provided and corrected, where required, exclusively by the nomination party. Any mineral lease selected from this Tract and awarded by the Louisiana State Mineral Board shall be without warranty of any kind, either express, implied, or statutory, including, but not limited to, the implied warranties of merchantability and fitness for a particular purpose. Should the mineral lease awarded by the Louisiana State Mineral Board be subsequently modified, cancelled or abrogated due to the existence of conflicting leases, operating agreements, private claims or other future obligations or conditions which may affect all or any portion of the leased Tract, it shall not relieve the Lessee of the obligation to pay any bonus due thereon to the Louisiana State Mineral Board, nor shall the Louisiana State Mineral Board be obligated to refund any consideration paid by the Lessor prior to such modification, cancellation, or abrogation, including, but not limited to, bonuses, rentals and royalties.

NOTE: The State of Louisiana does hereby reserve, and this lease shall be subject to, the imprescriptible right of surface use in the nature of a servitude in favor of the Department of Natural Resources, including its Offices and Commissions, for the sole purpose of implementing, constructing, servicing and maintaining approved coastal zone management and/or restoration projects. Utilization of any and all rights derived under this lease by the mineral lessee, its agents, successors or assigns, shall not interfere with nor hinder the reasonable surface use by the Department of Natural Resources, its Offices or Commissions, as herein above reserved.

Applicant: PATRICK L. DONOHUE PETROLEUM PROPERTIES, INC.

Bidder	Cash Payment	Price/Acre	Rental	Oil	Gas	Other



VERMILION PARISH



T14S - R3E



P.O.B.  
X=1,749,300.00  
Y=422,400.00

VERMILION RIVER

SL 2412

SL 2412

**TRACT 37934 - Jefferson Parish, Louisiana**

All of the lands now or formerly constituting the beds and bottoms of all water bodies of every nature and description the title of which vests in the State of Louisiana, together with all islands arising therein and other lands formed by accretion or by reliction, where allowed by law, excepting tax adjudicated lands, and not presently under mineral lease on November 9, 2005, situated in Jefferson Parish, Louisiana, and more particularly described as follows: Beginning at a point on the North boundary of Portion "A" of State Lease No. 17263, as amended, having Coordinates of X = 2,401,070.00 and Y = 324,689.79; thence North 12,850.42 feet to a point having Coordinates of X = 2,401,070.00 and Y = 337,540.21; thence East 4,283.17 feet to a point having Coordinates of X = 2,405,353.17 and Y = 337,540.21; thence North 5,629.58 feet to a point having Coordinates of X = 2,405,353.17 and Y = 343,169.79; thence East 14,196.83 feet to a point having Coordinates of X = 2,419,550.00 and Y = 343,169.79; thence South 13,180.00 feet to a point having Coordinates of X = 2,419,550.00 and Y = 329,989.79; thence West 3,586.66 feet to a point having Coordinates of X = 2,415,963.34 and Y = 329,989.79; thence South 5,300.00 feet to a point having Coordinates of X = 2,415,963.34 and Y = 324,689.79; thence West 12,043.90 feet to the Northeast corner of Portion "B" of said State Lease No. 17263 having Coordinates of X = 2,403,919.44 and Y = 324,689.79; thence West 214.14 feet along the North boundary of said Portion "B" of said State Lease No. 17263, to its Northwest corner having Coordinates of X = 2,403,705.30 and Y = 324,689.79; thence West 652.56 feet to the Northeast corner of said Portion "A" of said State Lease No. 17263 having Coordinates of X = 2,403,052.74 and Y = 324,689.79; thence West 1,982.74 feet along the North boundary of said Portion "A" of said State Lease No. 17263 to the point of beginning, **LESS AND EXCEPT** all those portions of State Lease No. 10439, as amended, State Lease No. 14554, as amended, State Lease No. 15092, as amended, State Lease No. 16681, as amended and State Lease No. 17712, that lie entirely within the above described tract; also, **LESS AND EXCEPT** the beds and bottoms of all water bodies of every nature and description attributable to State Lease No. 356, as amended, that lies within the above described tract, containing approximately **290 acres**, all as more particularly outlined on a plat on file in the Office of Mineral Resources, Department of Natural Resources. All bearings, distances and coordinates are based on Louisiana Coordinate System of 1927, (North or South Zone), where applicable.

NOTE: The above description of the Tract nominated for lease has been provided and corrected, where required, exclusively by the nomination party. Any mineral lease selected from this Tract and awarded by the Louisiana State Mineral Board shall be without warranty of any kind, either express, implied, or statutory, including, but not limited to, the implied warranties of merchantability and fitness for a particular purpose. Should the mineral lease awarded by the Louisiana State Mineral Board be subsequently modified, cancelled or abrogated due to the existence of conflicting leases, operating agreements, private claims or other future obligations or conditions which may affect all or any portion

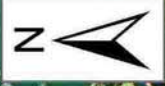
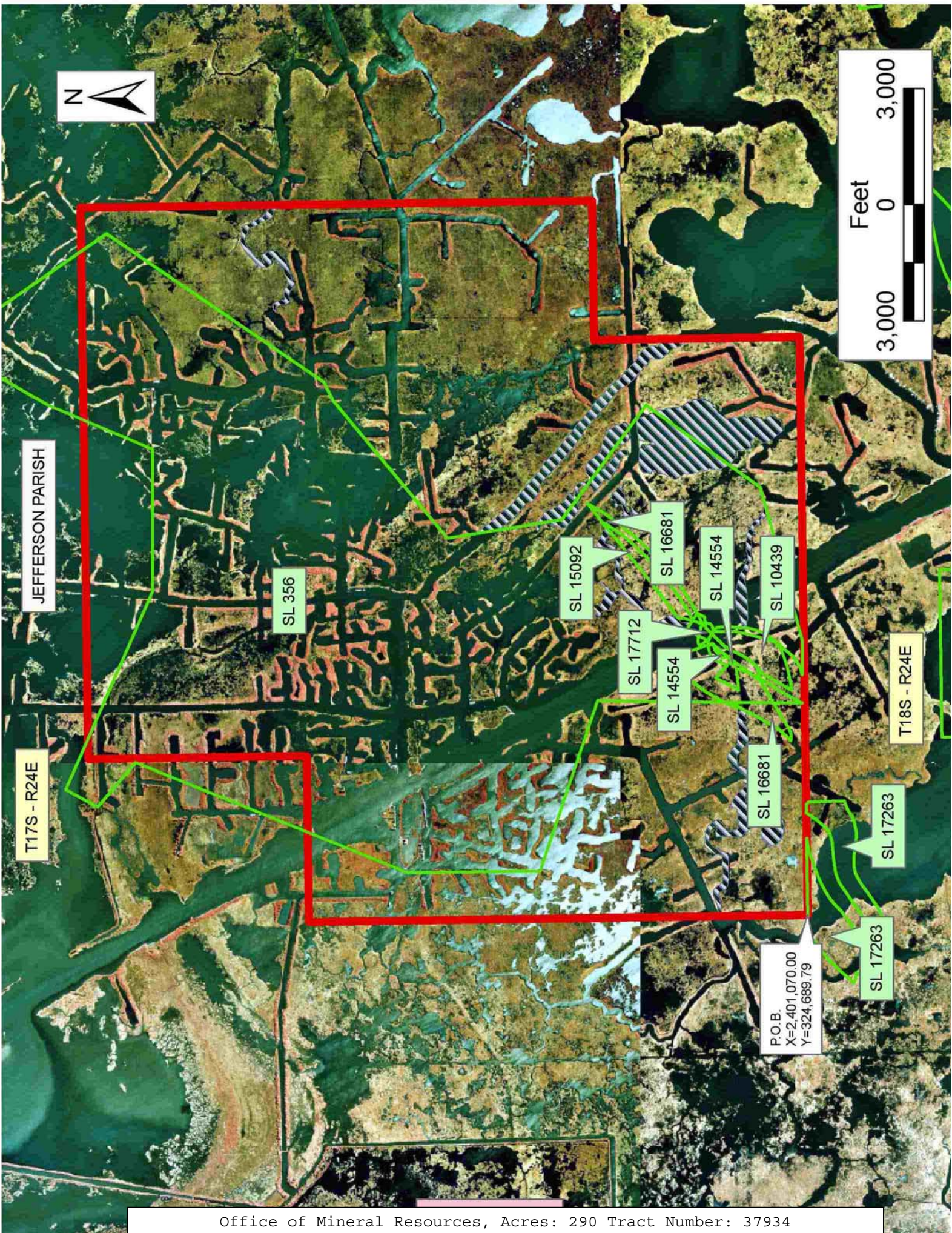
of the leased Tract, it shall not relieve the Lessee of the obligation to pay any bonus due thereon to the Louisiana State Mineral Board, nor shall the Louisiana State Mineral Board be obligated to refund any consideration paid by the Lessor prior to such modification, cancellation, or abrogation, including, but not limited to, bonuses, rentals and royalties.

NOTE: The State of Louisiana does hereby reserve, and this lease shall be subject to, the imprescriptible right of surface use in the nature of a servitude in favor of the Department of Natural Resources, including its Offices and Commissions, for the sole purpose of implementing, constructing, servicing and maintaining approved coastal zone management and/or restoration projects. Utilization of any and all rights derived under this lease by the mineral lessee, its agents, successors or assigns, shall not interfere with nor hinder the reasonable surface use by the Department of Natural Resources, its Offices or Commissions, as herein above reserved.

NOTE: The Department of Wildlife and Fisheries has designated certain areas in the coastal waters of the State of Louisiana as Oyster Seed Bed Areas. The exact location of those Seed Bed Areas must be obtained from the Department of Wildlife and Fisheries and any work done under a mineral lease from the State of Louisiana may necessarily be conducted in conformity with the rules and regulations promulgated by the said Department of Wildlife and Fisheries for Oyster Seed Bed Areas.

Applicant: STONE ENERGY CORPORATION

Bidder	Cash Payment	Price/Acre	Rental	Oil	Gas	Other



JEFFERSON PARISH

T17S - R24E

T18S - R24E

SL 356

SL 15092

SL 16681

SL 14554

SL 10439

SL 17712

SL 14554

SL 16681

SL 17263

SL 17263

P.O.B.  
X=2,401,070.00  
Y=324,689.79

**TRACT 37935 - Terrebonne Parish, Louisiana**

All of the lands now or formerly constituting the beds and bottoms of all water bodies of every nature and description the title of which vests in the State of Louisiana, together with all islands arising therein and other lands formed by accretion or by reliction, where allowed by law, excepting tax adjudicated lands, and not presently under mineral lease on November 9, 2005, situated in Terrebonne Parish, Louisiana, and more particularly described as follows: Beginning at a point on the East line of State Lease No. 18267 having Coordinates of X = 2,056,925.00 and Y = 280,371.58; thence North 5,172.56 feet along the East line of said State Lease No. 18267 to its Northeast corner also being a point on the South line of State Lease No. 17210 having Coordinates of X = 2,056,925.00 and Y = 285,544.14; thence along the boundaries of said State Lease No. 17210 the following courses: North 89 degrees 17 minutes 36 seconds East 6,431.97 feet and North 00 degrees 54 minutes 21 seconds West 13,229.75 feet to its Northeast corner having Coordinates of X = 2,063,147.32 and Y = 298,851.58; thence East 12,257.68 feet to a point having Coordinates of X = 2,075,405.00 and Y = 298,851.58; thence South 18,480.00 feet to a point having Coordinates of X = 2,075,405.00 and Y = 280,371.58; thence West 18,480.00 feet to the point of beginning, containing approximately **76 acres**, all as more particularly outlined on a plat on file in the Office of Mineral Resources, Department of Natural Resources. All bearings, distances and coordinates are based on Louisiana Coordinate System of 1927, (North or South Zone), where applicable.

NOTE: The above description of the Tract nominated for lease has been provided and corrected, where required, exclusively by the nomination party. Any mineral lease selected from this Tract and awarded by the Louisiana State Mineral Board shall be without warranty of any kind, either express, implied, or statutory, including, but not limited to, the implied warranties of merchantability and fitness for a particular purpose. Should the mineral lease awarded by the Louisiana State Mineral Board be subsequently modified, cancelled or abrogated due to the existence of conflicting leases, operating agreements, private claims or other future obligations or conditions which may affect all or any portion of the leased Tract, it shall not relieve the Lessee of the obligation to pay any bonus due thereon to the Louisiana State Mineral Board, nor shall the Louisiana State Mineral Board be obligated to refund any consideration paid by the Lessor prior to such modification, cancellation, or abrogation, including, but not limited to, bonuses, rentals and royalties.

NOTE: The State of Louisiana does hereby reserve, and this lease shall be subject to, the imprescriptible right of surface use in the nature of a servitude in favor of the Department of Natural Resources, including its Offices and Commissions, for the sole purpose of implementing, constructing, servicing and maintaining approved coastal zone management and/or restoration projects. Utilization of any and all rights derived under this lease by the mineral lessee, its agents, successors or assigns, shall not interfere with nor hinder the reasonable surface use by the



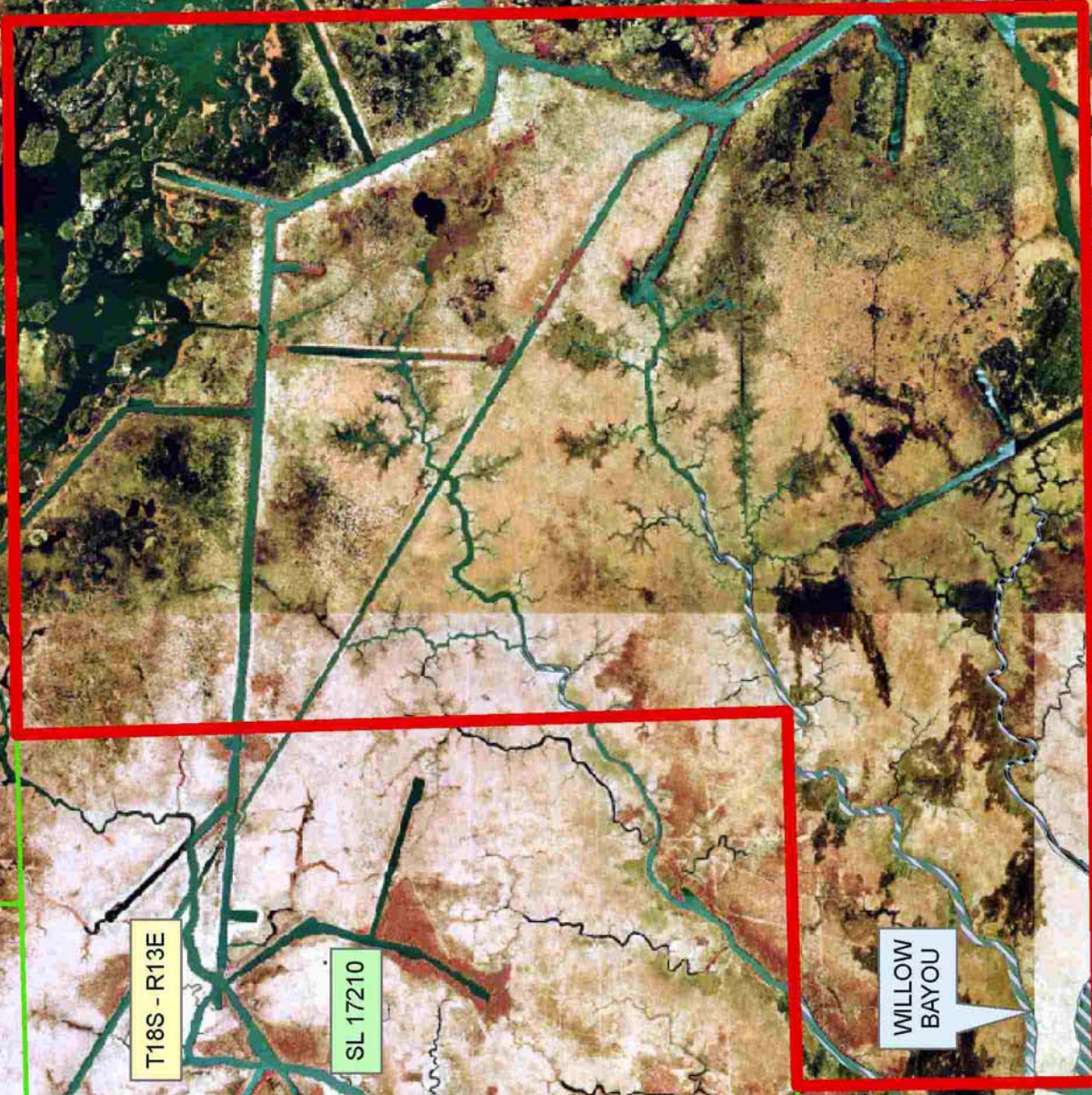
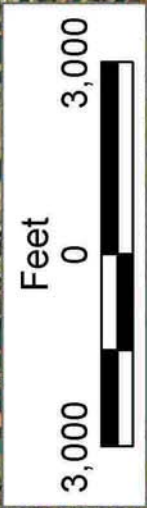
Department of Natural Resources, its Offices or Commissions, as herein above reserved.

Applicant: LESLIE M. COOPER

Bidder	Cash Payment	Price/Acre	Rental	Oil	Gas	Other



TERREBONNE PARISH



SL 18218

T18S - R13E

SL 17210

VICTORS BAYOU

SL 18267

P.O.B.  
X=2,056,925.00  
Y=280,371.58

WILLOW BAYOU

PLUMB BAYOU

T19S - R13E

**TRACT 37936 - Lafourche Parish, Louisiana**

All of the lands now or formerly constituting the beds and bottoms of all water bodies of every nature and description the title of which vests in the State of Louisiana, together with all islands arising therein and other lands formed by accretion or by reliction, where allowed by law, excepting tax adjudicated lands, and not presently under mineral lease on November 9, 2005, situated in Lafourche Parish, Louisiana, and more particularly described as follows: Beginning at a point having Coordinates of X = 2,351,700.00 and Y = 226,100.00; thence East 5,800.00 feet to a point having Coordinates of X = 2,357,500.00 and Y = 226,100.00; thence South 5,781.69 feet to a point having Coordinates of X = 2,357,500.00 and Y = 220,318.31; thence West 1,752.39 feet to the Northeast corner of State Lease No. 16707, as amended, having Coordinates of X = 2,355,747.61 and Y = 220,318.31; thence West 3,100.00 feet along the North boundary of said State Lease No. 16707 to its Northwest corner having Coordinates of X = 2,352,647.61 and Y = 220,318.31; thence West 947.61 feet to a point having Coordinates of X = 2,351,700.00 and Y = 220,318.31; thence North 5,781.69 feet to the point of beginning, containing approximately **74 acres**, all as more particularly outlined on a plat on file in the Office of Mineral Resources, Department of Natural Resources. All bearings, distances and coordinates are based on Louisiana Coordinate System of 1927, (North or South Zone), where applicable.

NOTE: The above description of the Tract nominated for lease has been provided and corrected, where required, exclusively by the nomination party. Any mineral lease selected from this Tract and awarded by the Louisiana State Mineral Board shall be without warranty of any kind, either express, implied, or statutory, including, but not limited to, the implied warranties of merchantability and fitness for a particular purpose. Should the mineral lease awarded by the Louisiana State Mineral Board be subsequently modified, cancelled or abrogated due to the existence of conflicting leases, operating agreements, private claims or other future obligations or conditions which may affect all or any portion of the leased Tract, it shall not relieve the Lessee of the obligation to pay any bonus due thereon to the Louisiana State Mineral Board, nor shall the Louisiana State Mineral Board be obligated to refund any consideration paid by the Lessor prior to such modification, cancellation, or abrogation, including, but not limited to, bonuses, rentals and royalties.

NOTE: The State of Louisiana does hereby reserve, and this lease shall be subject to, the imprescriptible right of surface use in the nature of a servitude in favor of the Department of Natural Resources, including its Offices and Commissions, for the sole purpose of implementing, constructing, servicing and maintaining approved coastal zone management and/or restoration projects. Utilization of any and all rights derived under this lease by the mineral lessee, its agents, successors or assigns, shall not interfere with nor hinder the reasonable surface use by the Department of Natural Resources, its Offices or Commissions, as herein above reserved.

NOTE: The Department of Wildlife and Fisheries has designated certain areas in the coastal waters of the State of Louisiana as Oyster Seed Bed Areas. The exact location of those Seed Bed Areas must be obtained from the Department of Wildlife and Fisheries and any work done under a mineral lease from the State of Louisiana may necessarily be conducted in conformity with the rules and regulations promulgated by the said Department of Wildlife and Fisheries for Oyster Seed Bed Areas.

Applicant: GRAY PRODUCTION COMPANY

Bidder	Cash Payment	Price/Acre	Rental	Oil	Gas	Other



LAFOURCHE PARISH

BAYOU LAFOURCHE

T21S - R22E



SL 16707

P.O.B.  
X=2,351,700.00  
Y=226,100.00

SL 1908



**TRACT 37937 - Lafourche Parish, Louisiana**

All of the lands now or formerly constituting the beds and bottoms of all water bodies of every nature and description the title of which vests in the State of Louisiana, together with all islands arising therein and other lands formed by accretion or by reliction, where allowed by law, excepting tax adjudicated lands, and not presently under mineral lease on November 9, 2005, situated in Lafourche Parish, Louisiana, and more particularly described as follows: Beginning at a point on the East boundary of State Lease No. 16707, as amended, having Coordinates of X = 2,355,747.61 and Y = 216,868.31; thence North 3,450.00 feet along the East boundary of said State Lease No. 16707 to its Northeast corner having Coordinates of X = 2,355,747.61 and Y = 220,318.31; thence East 3,752.39 feet to a point having Coordinates of X = 2,359,500.00 and Y = 220,318.31; thence South 3,450.00 feet to a point having Coordinates of X = 2,359,500.00 and Y = 216,868.31; thence West 3,752.39 feet to the point of beginning, containing approximately **33 acres**, all as more particularly outlined on a plat on file in the Office of Mineral Resources, Department of Natural Resources. All bearings, distances and coordinates are based on Louisiana Coordinate System of 1927, (North or South Zone), where applicable.

NOTE: The above description of the Tract nominated for lease has been provided and corrected, where required, exclusively by the nomination party. Any mineral lease selected from this Tract and awarded by the Louisiana State Mineral Board shall be without warranty of any kind, either express, implied, or statutory, including, but not limited to, the implied warranties of merchantability and fitness for a particular purpose. Should the mineral lease awarded by the Louisiana State Mineral Board be subsequently modified, cancelled or abrogated due to the existence of conflicting leases, operating agreements, private claims or other future obligations or conditions which may affect all or any portion of the leased Tract, it shall not relieve the Lessee of the obligation to pay any bonus due thereon to the Louisiana State Mineral Board, nor shall the Louisiana State Mineral Board be obligated to refund any consideration paid by the Lessor prior to such modification, cancellation, or abrogation, including, but not limited to, bonuses, rentals and royalties.

NOTE: The State of Louisiana does hereby reserve, and this lease shall be subject to, the imprescriptible right of surface use in the nature of a servitude in favor of the Department of Natural Resources, including its Offices and Commissions, for the sole purpose of implementing, constructing, servicing and maintaining approved coastal zone management and/or restoration projects. Utilization of any and all rights derived under this lease by the mineral lessee, its agents, successors or assigns, shall not interfere with nor hinder the reasonable surface use by the Department of Natural Resources, its Offices or Commissions, as herein above reserved.

NOTE: The Department of Wildlife and Fisheries has designated certain areas in the coastal waters of the State of Louisiana as Oyster Seed Bed Areas. The exact location of those Seed Bed Areas must be obtained from the Department of Wildlife and Fisheries and any work done under a mineral lease from the State of Louisiana may necessarily be conducted in conformity with the rules and regulations promulgated by the said Department of Wildlife and Fisheries for Oyster Seed Bed Areas.

Applicant: GRAY PRODUCTION COMPANY

Bidder	Cash Payment	Price/Acre	Rental	Oil	Gas	Other



LAFOURCHE PARISH

T21S - R22E



BAYOU LAFOURCHE

P.O.B.  
X=2,355,747.61  
Y=216,868.31

SL 16707



**TRACT 37938 - Lafourche Parish, Louisiana**

All of the lands now or formerly constituting the beds and bottoms of all water bodies of every nature and description the title of which vests in the State of Louisiana, together with all islands arising therein and other lands formed by accretion or by reliction, where allowed by law, excepting tax adjudicated lands, and not presently under mineral lease on November 9, 2005, situated in Lafourche Parish, Louisiana, and more particularly described as follows: Beginning at a point on the East boundary of State Lease No. 16707, as amended, having Coordinates of X = 2,355,747.61 and Y = 216,868.31; thence East 3,752.39 feet to a point having Coordinates of X = 2,359,500.00 and Y = 216,868.31; thence South 4,268.31 feet to a point having Coordinates of X = 2,359,500.00 and Y = 212,600.00; thence West 3,752.39 feet to a point having Coordinates of X = 2,355,747.61 and Y = 212,600.00; thence North 2,098.31 feet to the Southeast corner of said State Lease No. 16707 having Coordinates of X = 2,355,747.61 and Y = 214,698.31; thence North 2,170.00 feet along the East boundary of said State Lease No. 16707 to the point of beginning, containing approximately **44 acres**, all as more particularly outlined on a plat on file in the Office of Mineral Resources, Department of Natural Resources. All bearings, distances and coordinates are based on Louisiana Coordinate System of 1927, (North or South Zone), where applicable.

NOTE: The above description of the Tract nominated for lease has been provided and corrected, where required, exclusively by the nomination party. Any mineral lease selected from this Tract and awarded by the Louisiana State Mineral Board shall be without warranty of any kind, either express, implied, or statutory, including, but not limited to, the implied warranties of merchantability and fitness for a particular purpose. Should the mineral lease awarded by the Louisiana State Mineral Board be subsequently modified, cancelled or abrogated due to the existence of conflicting leases, operating agreements, private claims or other future obligations or conditions which may affect all or any portion of the leased Tract, it shall not relieve the Lessee of the obligation to pay any bonus due thereon to the Louisiana State Mineral Board, nor shall the Louisiana State Mineral Board be obligated to refund any consideration paid by the Lessor prior to such modification, cancellation, or abrogation, including, but not limited to, bonuses, rentals and royalties.

NOTE: The State of Louisiana does hereby reserve, and this lease shall be subject to, the imprescriptible right of surface use in the nature of a servitude in favor of the Department of Natural Resources, including its Offices and Commissions, for the sole purpose of implementing, constructing, servicing and maintaining approved coastal zone management and/or restoration projects. Utilization of any and all rights derived under this lease by the mineral lessee, its agents, successors or assigns, shall not interfere with nor hinder the reasonable surface use by the Department of Natural Resources, its Offices or Commissions, as herein above reserved.

NOTE: The Department of Wildlife and Fisheries has designated certain areas in the coastal waters of the State of Louisiana as Oyster Seed Bed Areas. The exact location of those Seed Bed Areas must be obtained from the Department of Wildlife and Fisheries and any work done under a mineral lease from the State of Louisiana may necessarily be conducted in conformity with the rules and regulations promulgated by the said Department of Wildlife and Fisheries for Oyster Seed Bed Areas.

Applicant: GRAY PRODUCTION COMPANY

Bidder	Cash Payment	Price/Acre	Rental	Oil	Gas	Other



1,000 0 1,000  
Feet



T21S - R22E

LAFOURCHE PARISH

BAYOU  
LAFOURCHE



P.O.B.  
X=2,355,747.61  
Y=216,868.31

SL 16707