

TRACT 37920 - Cameron Parish, Louisiana

All of the lands now or formerly constituting the beds and bottoms of all water bodies of every nature and description the title of which vests in the State of Louisiana, together with all islands arising therein and other lands formed by accretion or by reliction, where allowed by law, excepting tax adjudicated lands, and not presently under mineral lease on November 9, 2005, situated in Cameron Parish, Louisiana, and more particularly described as follows: Beginning at a point having Coordinates of X = 1,549,933.00 and Y = 451,682.00; thence North 11,308.00 feet to a point having Coordinates of X = 1,549,933.00 and Y = 462,990.00; thence East approximately 2,234 feet to a point on the boundary of State Lease No. 344, as amended having a Coordinate of Y = 462,990.00; thence Southwesterly, Southeasterly and Northerly on the boundary of said State Lease No. 344 to the point of intersection with an East West line having a Coordinate of Y = 462,990.00; thence East approximately 4,865 feet to a point having Coordinates of X = 1,560,368.00 and Y = 462,990.00; thence South 2,057.95 feet to a point on the boundary of State Lease No. 1812, as amended having Coordinates of X = 1,560,368.00 and Y = 460,932.05; thence along the boundary of said State Lease No. 1812 the following courses: North 89 degrees 17 minutes 54 seconds West 98.23 feet, South 00 degrees 42 minutes 06 seconds West 1,743.30 feet, North 89 degrees 17 minutes 54 seconds West 1,500.00 feet, South 33 degrees 58 minutes 55 seconds East 1,094.48 feet, South 53 degrees 06 minutes 20 seconds East 660.44 feet, South 00 degrees 42 minutes 06 seconds West 1,350.00 feet, and South 89 degrees 17 minutes 54 seconds East 496.11 feet to a point having Coordinates of X = 1,560,368.00 and Y = 456,548.42; thence South 4,866.42 feet to a point having Coordinates of X = 1,560,368.00 and Y = 451,682.00; thence West 10,435.00 feet to the point of beginning, **LESS AND EXCEPT** any portion of said State Lease No. 344 and said State Lease No. 1812 that may lie within the above described tract, containing approximately **2,191 acres**, all as more particularly outlined on a plat on file in the Office of Mineral Resources, Department of Natural Resources. All bearings, distances and coordinates are based on Louisiana Coordinate System of 1927, (North or South Zone), where applicable.

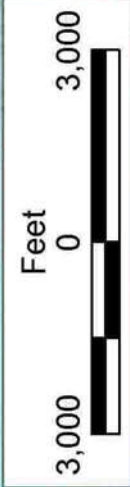
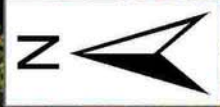
NOTE: The above description of the Tract nominated for lease has been provided and corrected, where required, exclusively by the nomination party. Any mineral lease selected from this Tract and awarded by the Louisiana State Mineral Board shall be without warranty of any kind, either express, implied, or statutory, including, but not limited to, the implied warranties of merchantability and fitness for a particular purpose. Should the mineral lease awarded by the Louisiana State Mineral Board be subsequently modified, cancelled or abrogated due to the existence of conflicting leases, operating agreements, private claims or other future obligations or conditions which may affect all or any portion of the leased Tract, it shall not relieve the Lessee of the obligation to pay any bonus due thereon to the Louisiana State Mineral Board, nor shall the Louisiana State Mineral Board be obligated to refund any consideration

paid by the Lessor prior to such modification, cancellation, or abrogation, including, but not limited to, bonuses, rentals and royalties.

NOTE: The State of Louisiana does hereby reserve, and this lease shall be subject to, the imprescriptible right of surface use in the nature of a servitude in favor of the Department of Natural Resources, including its Offices and Commissions, for the sole purpose of implementing, constructing, servicing and maintaining approved coastal zone management and/or restoration projects. Utilization of any and all rights derived under this lease by the mineral lessee, its agents, successors or assigns, shall not interfere with nor hinder the reasonable surface use by the Department of Natural Resources, its Offices or Commissions, as herein above reserved.

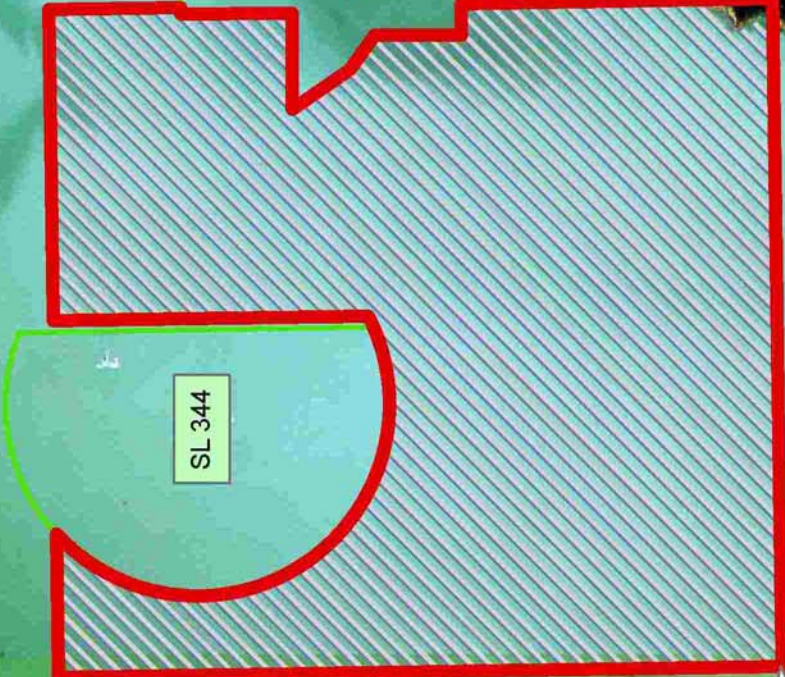
Applicant: HAROLD J. ANDERSON, INC.

Bidder	Cash Payment	Price/Acre	Rental	Oil	Gas	Other



CAMERON PARISH

GRAND LAKE



SL 344

SL 1812

SL 18505

T13S - R4W

P.O.B.
X = 1,549,933.00
Y = 451,682.00

TRACT 37921 - Cameron Parish, Louisiana

All of the lands now or formerly constituting the beds and bottoms of all water bodies of every nature and description the title of which vests in the State of Louisiana, together with all islands arising therein and other lands formed by accretion or by reliction, where allowed by law, excepting tax adjudicated lands, and not presently under mineral lease on November 9, 2005, situated in Cameron Parish, Louisiana, and more particularly described as follows: Beginning at a point having Coordinates of X = 1,570,803.00 and Y = 451,682.00; thence West 10,435.00 feet to a point having Coordinates of X = 1,560,368.00 and Y = 451,682.00; thence North 4,866.42 feet to a point on the South line of State Lease No. 1812, as amended, having Coordinates of X = 1,560,368.00 and Y = 456,548.42; thence along the boundary of said State Lease No. 1812 the following courses: South 89 degrees 17 minutes 54 seconds East 2,003.89 feet, North 00 degrees 42 minutes 06 seconds East 556.10 feet, South 89 degrees 17 minutes 54 seconds East 2,524.90 feet, North 00 degrees 42 minutes 06 seconds East 2,640.00 feet, North 89 degrees 17 minutes 54 seconds West 2,040.70 feet, North 00 degrees 42 minutes 06 seconds East 1,187.20 feet, and North 89 degrees 17 minutes 54 seconds West 2,541.77 feet to a point having Coordinates of X = 1,560,368.00 and Y = 460,932.05; thence North 2,057.95 feet to a point having Coordinates of X = 1,560,368.00 and Y = 462,990.00; thence East 10,435.00 feet to a point having Coordinates of X = 1,570,803.00 and Y = 462,990.00; thence South 2,459.14 feet to a point on the North line of State Lease No. 18505 having Coordinates of X = 1,570,803.00 and Y = 460,530.86; thence along the boundary of said State Lease No. 18505 the following courses: West 5,523.43 feet, South 02 degrees 41 minutes 16 seconds West 3,604.60 feet, South 60 degrees 10 minutes 57 seconds East 2,676.01 feet, and East 3,370.73 feet to a point having Coordinates of X = 1,570,803.00 and Y = 455,599.61; thence South 3,917.61 feet to the point of beginning, **LESS AND EXCEPT** any portion of said State Lease No. 1812 that may lie within the above described tract, containing approximately **815 acres**, all as more particularly outlined on a plat on file in the Office of Mineral Resources, Department of Natural Resources. All bearings, distances and coordinates are based on Louisiana Coordinate System of 1927, (North or South Zone), where applicable.

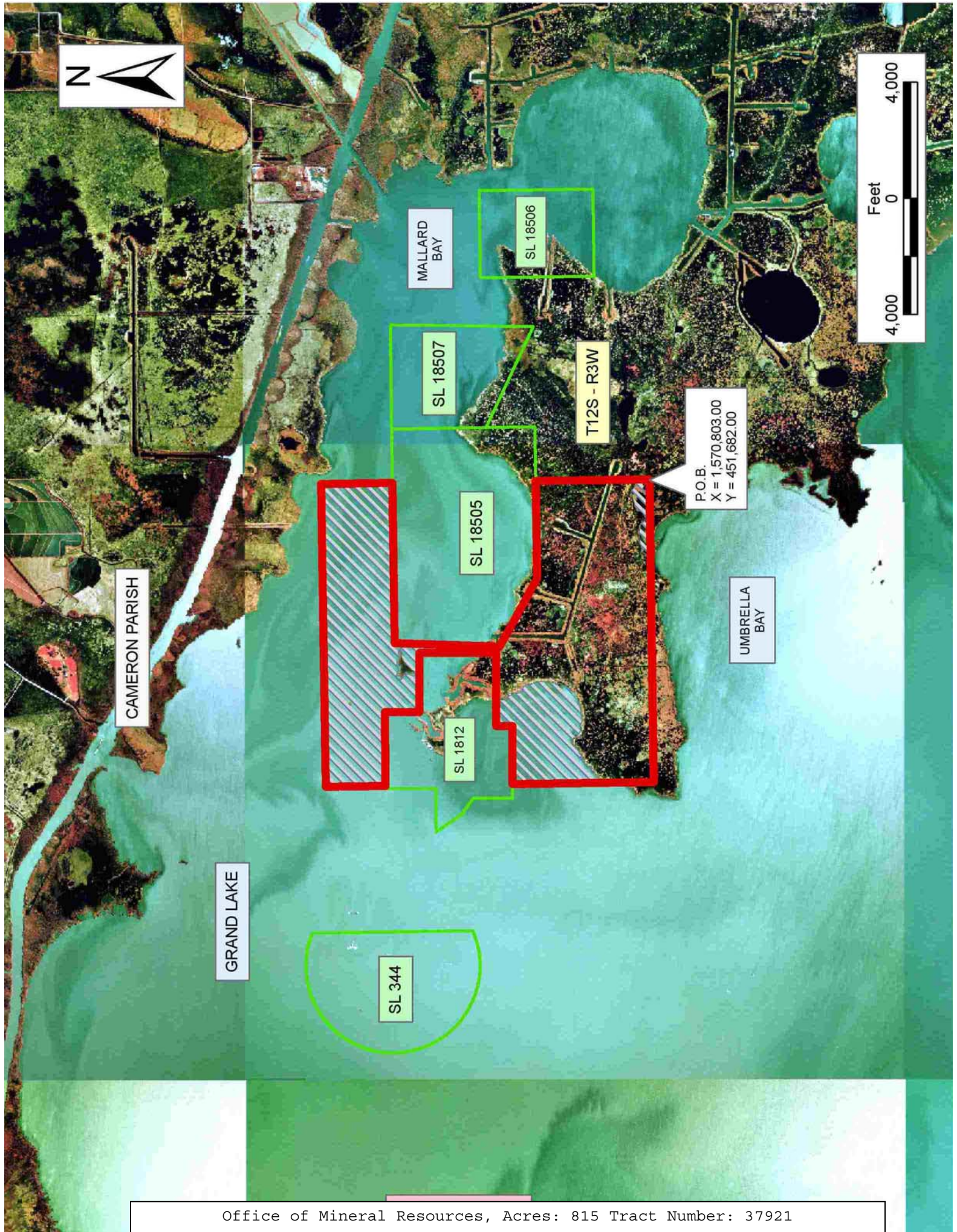
NOTE: The above description of the Tract nominated for lease has been provided and corrected, where required, exclusively by the nomination party. Any mineral lease selected from this Tract and awarded by the Louisiana State Mineral Board shall be without warranty of any kind, either express, implied, or statutory, including, but not limited to, the implied warranties of merchantability and fitness for a particular purpose. Should the mineral lease awarded by the Louisiana State Mineral Board be subsequently modified, cancelled or abrogated due to the existence of conflicting leases, operating agreements, private claims or other future obligations or conditions which may affect all or any portion of the leased Tract, it shall not relieve the Lessee of the obligation to pay any bonus due thereon to the Louisiana State Mineral Board, nor shall the Louisiana State Mineral Board be obligated to refund any consideration

paid by the Lessor prior to such modification, cancellation, or abrogation, including, but not limited to, bonuses, rentals and royalties.

NOTE: The State of Louisiana does hereby reserve, and this lease shall be subject to, the imprescriptible right of surface use in the nature of a servitude in favor of the Department of Natural Resources, including its Offices and Commissions, for the sole purpose of implementing, constructing, servicing and maintaining approved coastal zone management and/or restoration projects. Utilization of any and all rights derived under this lease by the mineral lessee, its agents, successors or assigns, shall not interfere with nor hinder the reasonable surface use by the Department of Natural Resources, its Offices or Commissions, as herein above reserved.

Applicant: HAROLD J. ANDERSON, INC.

Bidder	Cash Payment	Price/Acre	Rental	Oil	Gas	Other



CAMERON PARISH

GRAND LAKE

MALLARD BAY

UMBRELLA BAY

SL 18507

SL 18506

T12S - R3W

SL 1812

SL 18505

P.O.B.
X = 1,570,803.00
Y = 451,682.00

SL 344

TRACT 37922 - Cameron Parish, Louisiana

All of the lands now or formerly constituting the beds and bottoms of all water bodies of every nature and description the title of which vests in the State of Louisiana, together with all islands arising therein and other lands formed by accretion or by reliction, where allowed by law, excepting tax adjudicated lands, and not presently under mineral lease on November 9, 2005, situated in Cameron Parish, Louisiana, and more particularly described as follows: Beginning at a point having Coordinates of X = 1,570,803.00 and Y = 451,682.00; thence North 3,917.61 feet to a point on the South line of State Lease No. 18505 having Coordinates of X = 1,570,803.00 and Y = 455,599.61; thence along the boundary of said State Lease No. 18505 the following courses: East 1,863.71 feet and North 1,680.45 feet to the Southwest corner of State Lease No. 18507 having Coordinates of X = 1,572,666.71 and Y = 457,280.06; thence along the boundary of said State Lease No. 18507 the following courses: South 64 degrees 05 minutes 13 seconds East 3,845.36 feet, North 01 degrees 22 minutes 52 seconds East 4,932.68 feet, and West 3,577.64 feet to its Northwest corner, also being the Northeast corner of said State Lease No. 18505 having Coordinates of X = 1,572,666.71 and Y = 460,530.86; thence West 1,863.71 feet on the North line of said State Lease No. 18505 to a point having Coordinates of X = 1,570,803.00 and Y = 460,530.86; thence North 2,459.14 feet to a point having Coordinates of X = 1,570,803.00 and Y = 462,990.00; thence East 10,018.00 feet to a point having Coordinates of X = 1,580,821.00 and Y = 462,990.00; thence South 5,590.00 feet to a point on the North line of State Lease No. 18506 having Coordinates of X = 1,580,821.00 and Y = 457,400.00; thence along the boundary of said State Lease No. 18506 the following courses: West 2,990.00 feet, South 3,920.00 feet, and East 2,990.00 feet to a point having Coordinates of X = 1,580,821.00 and Y = 453,480.00; thence South 1,798.00 feet to a point having Coordinates of X = 1,580,821.00 and Y = 451,682.00; thence West 10,018.00 feet to the point of beginning, containing approximately **900 acres**, all as more particularly outlined on a plat on file in the Office of Mineral Resources, Department of Natural Resources. All bearings, distances and coordinates are based on Louisiana Coordinate System of 1927, (North or South Zone), where applicable.

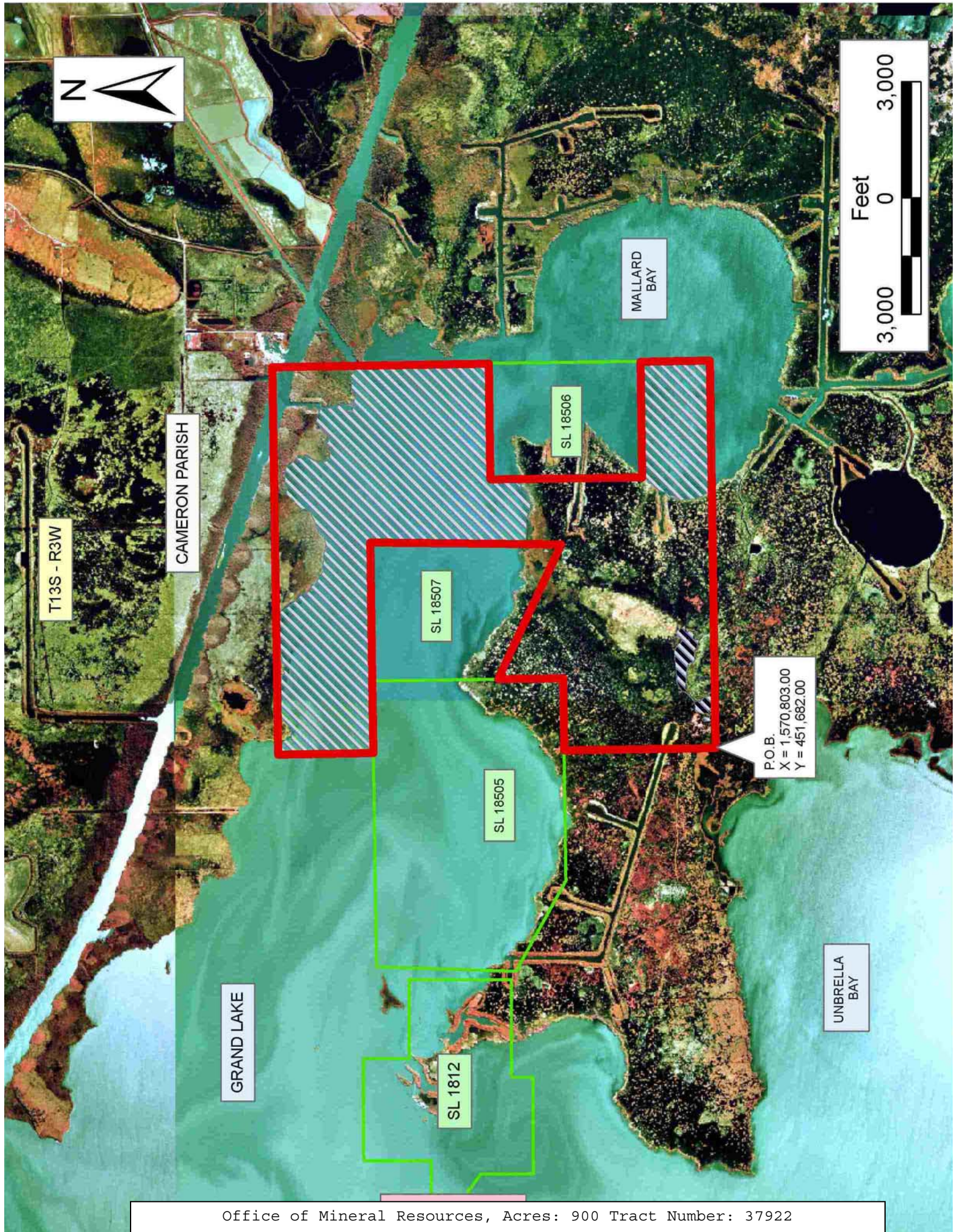
NOTE: The above description of the Tract nominated for lease has been provided and corrected, where required, exclusively by the nomination party. Any mineral lease selected from this Tract and awarded by the Louisiana State Mineral Board shall be without warranty of any kind, either express, implied, or statutory, including, but not limited to, the implied warranties of merchantability and fitness for a particular purpose. Should the mineral lease awarded by the Louisiana State Mineral Board be subsequently modified, cancelled or abrogated due to the existence of conflicting leases, operating agreements, private claims or other future obligations or conditions which may affect all or any portion of the leased Tract, it shall not relieve the Lessee of the obligation to pay any bonus due thereon to the Louisiana State Mineral Board, nor shall the Louisiana State Mineral Board be obligated to refund any consideration

paid by the Lessor prior to such modification, cancellation, or abrogation, including, but not limited to, bonuses, rentals and royalties.

NOTE: The State of Louisiana does hereby reserve, and this lease shall be subject to, the imprescriptible right of surface use in the nature of a servitude in favor of the Department of Natural Resources, including its Offices and Commissions, for the sole purpose of implementing, constructing, servicing and maintaining approved coastal zone management and/or restoration projects. Utilization of any and all rights derived under this lease by the mineral lessee, its agents, successors or assigns, shall not interfere with nor hinder the reasonable surface use by the Department of Natural Resources, its Offices or Commissions, as herein above reserved.

Applicant: HAROLD J. ANDERSON, INC.

Bidder	Cash Payment	Price/Acre	Rental	Oil	Gas	Other



T13S - R3W

CAMERON PARISH

MALLARD BAY

SL 18506

SL 18507

SL 18505

P.O.B.
X = 1,570,803.00
Y = 451,682.00

GRAND LAKE

SL 1812

UMBRELLA BAY

TRACT 37923 - Cameron Parish, Louisiana

All of the lands now or formerly constituting the beds and bottoms of all water bodies of every nature and description the title of which vests in the State of Louisiana, together with all islands arising therein and other lands formed by accretion or by reliction, where allowed by law, excepting tax adjudicated lands, and not presently under mineral lease on November 9, 2005, situated in Cameron Parish, Louisiana, and more particularly described as follows: Beginning at the Southwest corner of State Lease No. 18037, also being a point on the North line of State Lease No. 18038 having Coordinates of X = 1,222,704.54 and Y = 462,089.57; thence West 3,234.21 feet along the North line of said State Lease No. 18038 to its Northwest corner having Coordinates of X = 1,219,470.33 and Y = 462,089.57; thence West 7,101.41 feet to a point on the Texas Louisiana boundary having Coordinates of X = 1,212,368.92 and Y = 462,089.57; thence along the said Texas Louisiana boundary the following courses: North 21 degrees 41 minutes 28 seconds East 1,491.01 feet and North 14 degrees 23 minutes 58 seconds East 1,049.88 feet to the Southwest corner of State Lease No. 18722 having Coordinates of X = 1,213,181.08 and Y = 464,491.90; thence East 9,523.46 feet along the South line of said State Lease NO. 18722 to its Southeast corner and a point on the West line of State Lease No. 18534; thence along the boundaries of said State Lease No. 18534 the following: South 83.80 feet, East 1,743.93 feet and South 1,244.10 feet to its Southwest corner and a point on the North line of said State Lease No. 18037 having Coordinates of X = 1,224,448.47 and Y = 463,164.00; thence along the boundaries of said State Lease No. 18037 the following: West 1,743.93 feet and South 1,074.43 feet to the point of beginning, containing approximately **595.14 acres, LESS AND EXCEPT** that portion thereof, if any, located West of the boundary line between the States of Texas and Louisiana as determined by the report of the Special Master and adjudicated by the Supreme Court of the United States in litigation styled **Texas v. Louisiana, et al No. 36 Original**, or as otherwise approved by said court, all as more particularly outlined on a plat on file in the Office of Mineral Resources, Department of Natural Resources. All bearings, distances and coordinates are based on Louisiana Coordinate System of 1927, (North or South Zone), where applicable.

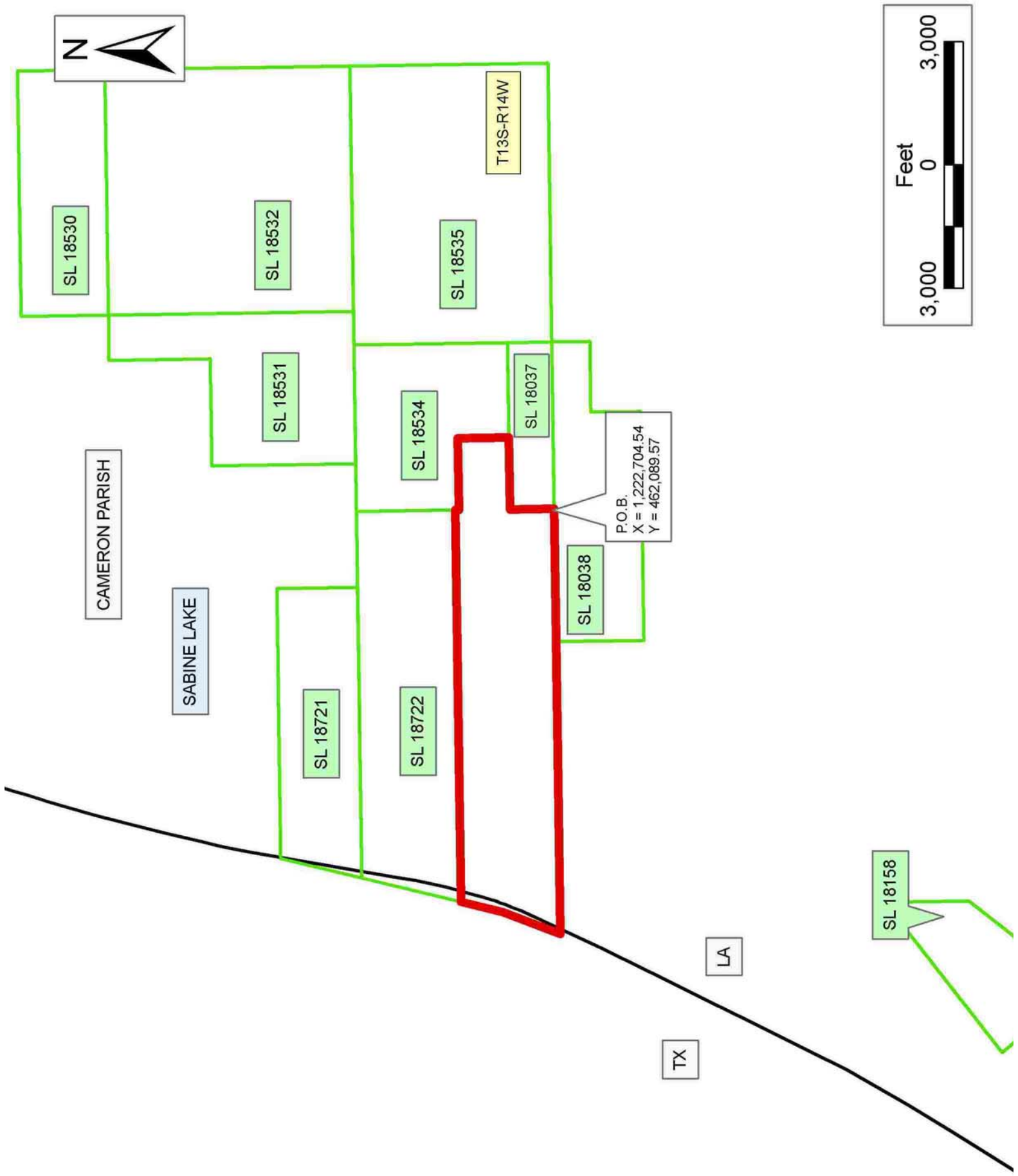
NOTE: The above description of the Tract nominated for lease has been provided and corrected, where required, exclusively by the nomination party. Any mineral lease selected from this Tract and awarded by the Louisiana State Mineral Board shall be without warranty of any kind, either express, implied, or statutory, including, but not limited to, the implied warranties of merchantability and fitness for a particular purpose. Should the mineral lease awarded by the Louisiana State Mineral Board be subsequently modified, cancelled or abrogated due to the existence of conflicting leases, operating agreements, private claims or other future obligations or conditions which may affect all or any portion of the leased Tract, it shall not relieve the Lessee of the obligation to pay any bonus due thereon to the Louisiana State Mineral Board, nor shall the Louisiana State Mineral Board be obligated to refund any consideration

paid by the Lessor prior to such modification, cancellation, or abrogation, including, but not limited to, bonuses, rentals and royalties.

NOTE: The State of Louisiana does hereby reserve, and this lease shall be subject to, the imprescriptible right of surface use in the nature of a servitude in favor of the Department of Natural Resources, including its Offices and Commissions, for the sole purpose of implementing, constructing, servicing and maintaining approved coastal zone management and/or restoration projects. Utilization of any and all rights derived under this lease by the mineral lessee, its agents, successors or assigns, shall not interfere with nor hinder the reasonable surface use by the Department of Natural Resources, its Offices or Commissions, as herein above reserved.

Applicant: SULLY OIL

Bidder	Cash Payment	Price/Acre	Rental	Oil	Gas	Other



TRACT 37924 - Cameron Parish, Louisiana

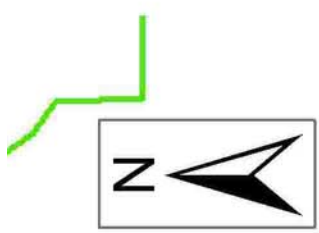
All of the lands now or formerly constituting the beds and bottoms of all water bodies of every nature and description the title of which vests in the State of Louisiana, together with all islands arising therein and other lands formed by accretion or by reliction, where allowed by law, excepting tax adjudicated lands, and not presently under mineral lease on November 9, 2005, situated in Cameron Parish, Louisiana, and more particularly described as follows: Beginning at a point having Coordinates of X = 1,549,933.00 and Y = 441,247.00; thence West 10,435.00 feet to a point having Coordinates of X = 1,539,498.00 and Y = 441,247.00; thence North 10,435.00 feet to a point having Coordinates of X = 1,539,498.00 and Y = 451,682.00; thence East 10,435.00 feet to a point having Coordinates of X = 1,549,933.00 and Y = 451,682.00; thence South 10,435.00 feet to the point of beginning, containing approximately **2,499.75 acres**, all as more particularly outlined on a plat on file in the Office of Mineral Resources, Department of Natural Resources. All bearings, distances and coordinates are based on Louisiana Coordinate System of 1927, (North or South Zone), where applicable.

NOTE: The above description of the Tract nominated for lease has been provided and corrected, where required, exclusively by the nomination party. Any mineral lease selected from this Tract and awarded by the Louisiana State Mineral Board shall be without warranty of any kind, either express, implied, or statutory, including, but not limited to, the implied warranties of merchantability and fitness for a particular purpose. Should the mineral lease awarded by the Louisiana State Mineral Board be subsequently modified, cancelled or abrogated due to the existence of conflicting leases, operating agreements, private claims or other future obligations or conditions which may affect all or any portion of the leased Tract, it shall not relieve the Lessee of the obligation to pay any bonus due thereon to the Louisiana State Mineral Board, nor shall the Louisiana State Mineral Board be obligated to refund any consideration paid by the Lessor prior to such modification, cancellation, or abrogation, including, but not limited to, bonuses, rentals and royalties.

NOTE: The State of Louisiana does hereby reserve, and this lease shall be subject to, the imprescriptible right of surface use in the nature of a servitude in favor of the Department of Natural Resources, including its Offices and Commissions, for the sole purpose of implementing, constructing, servicing and maintaining approved coastal zone management and/or restoration projects. Utilization of any and all rights derived under this lease by the mineral lessee, its agents, successors or assigns, shall not interfere with nor hinder the reasonable surface use by the Department of Natural Resources, its Offices or Commissions, as herein above reserved.

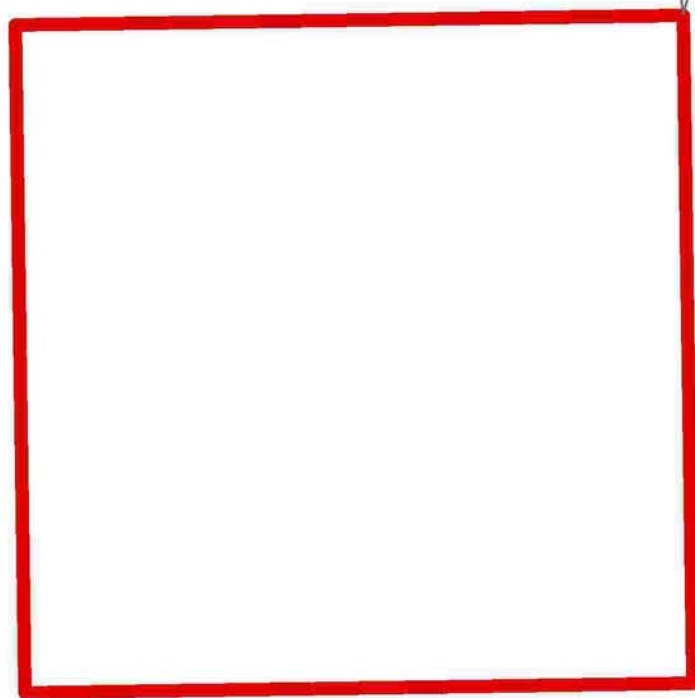
Applicant: HAROLD J. ANDERSON, INC.

Bidder	Cash Payment	Price/Acre	Rental	Oil	Gas	Other



CAMERON PARISH

GRAND LAKE



P.O.B.
X = 1,549,933.00
Y = 441,247.00

T13S - R4W



TRACT 37925 - Cameron Parish, Louisiana

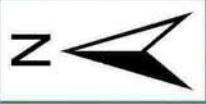
All of the lands now or formerly constituting the beds and bottoms of all water bodies of every nature and description the title of which vests in the State of Louisiana, together with all islands arising therein and other lands formed by accretion or by reliction, where allowed by law, excepting tax adjudicated lands, and not presently under mineral lease on November 9, 2005, situated in Cameron Parish, Louisiana, and more particularly described as follows: Beginning at a point having Coordinates of X = 1,549,933.00 and Y = 451,682.00; thence East 10,435.00 feet to a point having Coordinates of X = 1,560,368.00 and Y = 451,682.00; thence South 10,435.00 feet to a point having Coordinates of X = 1,560,368.00 and Y = 441,247.00; thence West 10,435.00 feet to a point having Coordinates of X = 1,549,933.00 and Y = 441,247.00; thence North 10,435.00 feet to the point of beginning, containing approximately **2,490 acres**, all as more particularly outlined on a plat on file in the Office of Mineral Resources, Department of Natural Resources. All bearings, distances and coordinates are based on Louisiana Coordinate System of 1927, (North or South Zone), where applicable.

NOTE: The above description of the Tract nominated for lease has been provided and corrected, where required, exclusively by the nomination party. Any mineral lease selected from this Tract and awarded by the Louisiana State Mineral Board shall be without warranty of any kind, either express, implied, or statutory, including, but not limited to, the implied warranties of merchantability and fitness for a particular purpose. Should the mineral lease awarded by the Louisiana State Mineral Board be subsequently modified, cancelled or abrogated due to the existence of conflicting leases, operating agreements, private claims or other future obligations or conditions which may affect all or any portion of the leased Tract, it shall not relieve the Lessee of the obligation to pay any bonus due thereon to the Louisiana State Mineral Board, nor shall the Louisiana State Mineral Board be obligated to refund any consideration paid by the Lessor prior to such modification, cancellation, or abrogation, including, but not limited to, bonuses, rentals and royalties.

NOTE: The State of Louisiana does hereby reserve, and this lease shall be subject to, the imprescriptible right of surface use in the nature of a servitude in favor of the Department of Natural Resources, including its Offices and Commissions, for the sole purpose of implementing, constructing, servicing and maintaining approved coastal zone management and/or restoration projects. Utilization of any and all rights derived under this lease by the mineral lessee, its agents, successors or assigns, shall not interfere with nor hinder the reasonable surface use by the Department of Natural Resources, its Offices or Commissions, as herein above reserved.

Applicant: HAROLD J. ANDERSON, INC.

Bidder	Cash Payment	Price/Acre	Rental	Oil	Gas	Other

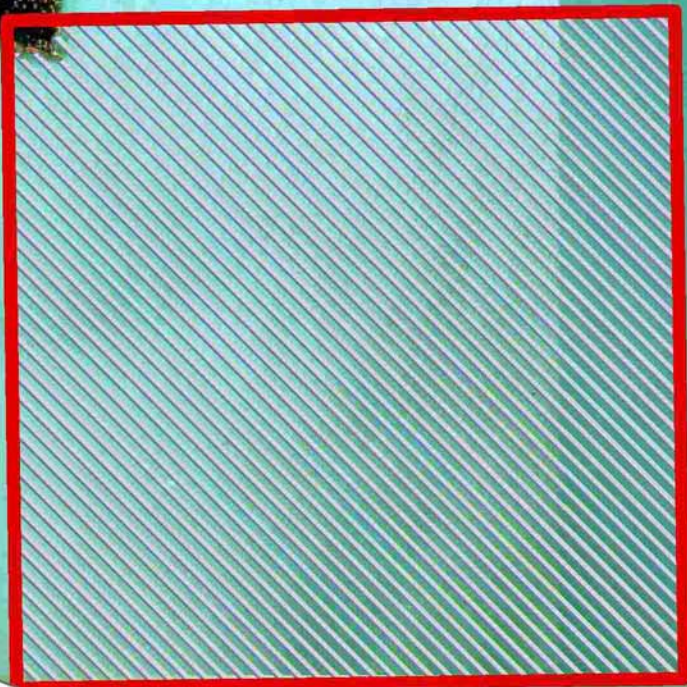


SL 1812

SL 344

CAMERON PARISH

P.O.B.
X = 1,549,933.00
Y = 451,682.00



GRAND LAKE



TRACT 37926 - Cameron Parish, Louisiana

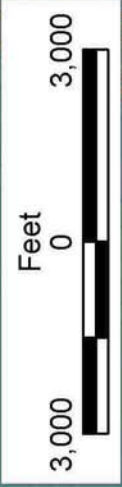
All of the lands now or formerly constituting the beds and bottoms of all water bodies of every nature and description the title of which vests in the State of Louisiana, together with all islands arising therein and other lands formed by accretion or by reliction, where allowed by law, excepting tax adjudicated lands, and not presently under mineral lease on November 9, 2005, situated in Cameron Parish, Louisiana, and more particularly described as follows: Beginning at a point having Coordinates of X = 1,570,803.00 and Y = 441,247.00; thence West 10,435.00 feet to a point having Coordinates of X = 1,560,368.00 and Y = 441,247.00; thence North 10,435.00 feet to a point having Coordinates of X = 1,560,368.00 and Y = 451,682.00; thence East 10,435.00 feet to a point having Coordinates of X = 1,570,803.00 and Y = 451,682.00; thence South 10,435.00 feet to the point of beginning, containing approximately **2,305 acres**, all as more particularly outlined on a plat on file in the Office of Mineral Resources, Department of Natural Resources. All bearings, distances and coordinates are based on Louisiana Coordinate System of 1927, (North or South Zone), where applicable.

NOTE: The above description of the Tract nominated for lease has been provided and corrected, where required, exclusively by the nomination party. Any mineral lease selected from this Tract and awarded by the Louisiana State Mineral Board shall be without warranty of any kind, either express, implied, or statutory, including, but not limited to, the implied warranties of merchantability and fitness for a particular purpose. Should the mineral lease awarded by the Louisiana State Mineral Board be subsequently modified, cancelled or abrogated due to the existence of conflicting leases, operating agreements, private claims or other future obligations or conditions which may affect all or any portion of the leased Tract, it shall not relieve the Lessee of the obligation to pay any bonus due thereon to the Louisiana State Mineral Board, nor shall the Louisiana State Mineral Board be obligated to refund any consideration paid by the Lessor prior to such modification, cancellation, or abrogation, including, but not limited to, bonuses, rentals and royalties.

NOTE: The State of Louisiana does hereby reserve, and this lease shall be subject to, the imprescriptible right of surface use in the nature of a servitude in favor of the Department of Natural Resources, including its Offices and Commissions, for the sole purpose of implementing, constructing, servicing and maintaining approved coastal zone management and/or restoration projects. Utilization of any and all rights derived under this lease by the mineral lessee, its agents, successors or assigns, shall not interfere with nor hinder the reasonable surface use by the Department of Natural Resources, its Offices or Commissions, as herein above reserved.

Applicant: HAROLD J. ANDERSON, INC.

Bidder	Cash Payment	Price/Acre	Rental	Oil	Gas	Other



SL 18507

SL 18505

SL 1812

CAMERON PARISH

GRAND LAKE

UMBRELLA BAY

P.O.B.
X = 1,570,803.00
Y = 441,247.00

TRACT 37927 - Cameron Parish, Louisiana

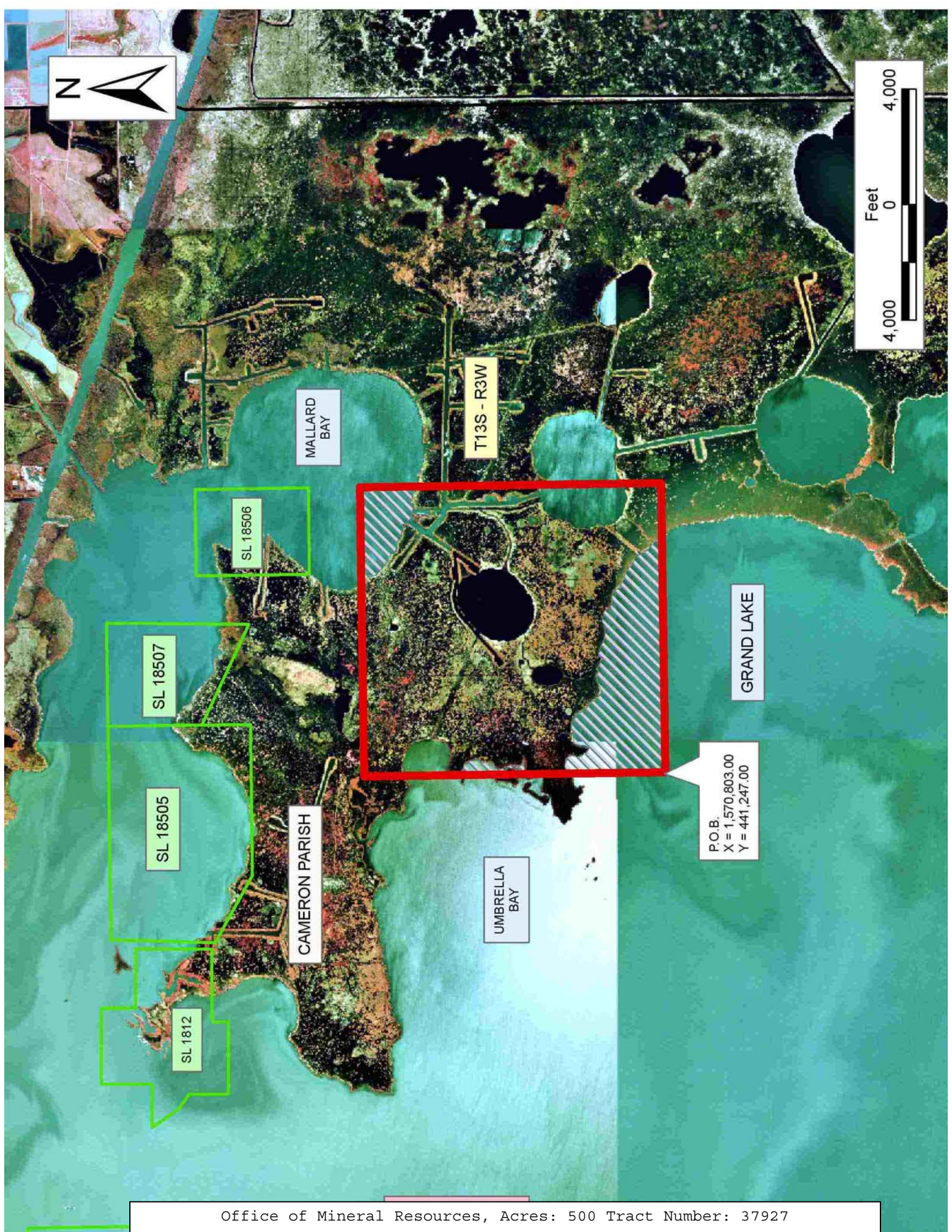
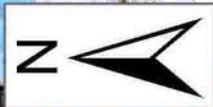
All of the lands now or formerly constituting the beds and bottoms of all water bodies of every nature and description the title of which vests in the State of Louisiana, together with all islands arising therein and other lands formed by accretion or by reliction, where allowed by law, excepting tax adjudicated lands, and not presently under mineral lease on November 9, 2005, situated in Cameron Parish, Louisiana, and more particularly described as follows: Beginning at a point having Coordinates of X = 1,570,803.00 and Y = 441,247.00; thence North 10,435.00 feet to a point having Coordinates of X = 1,570,803.00 and Y = 451,682.00; thence East 10,018.00 feet to a point having Coordinates of X = 1,580,821.00 and Y = 451,682.00; thence South 10,435.00 feet to a point having Coordinates of X = 1,580,821.00 and Y = 441,247.00; thence West 10,018.00 feet to the point of beginning, containing approximately **500 acres**, all as more particularly outlined on a plat on file in the Office of Mineral Resources, Department of Natural Resources. All bearings, distances and coordinates are based on Louisiana Coordinate System of 1927, (North or South Zone), where applicable.

NOTE: The above description of the Tract nominated for lease has been provided and corrected, where required, exclusively by the nomination party. Any mineral lease selected from this Tract and awarded by the Louisiana State Mineral Board shall be without warranty of any kind, either express, implied, or statutory, including, but not limited to, the implied warranties of merchantability and fitness for a particular purpose. Should the mineral lease awarded by the Louisiana State Mineral Board be subsequently modified, cancelled or abrogated due to the existence of conflicting leases, operating agreements, private claims or other future obligations or conditions which may affect all or any portion of the leased Tract, it shall not relieve the Lessee of the obligation to pay any bonus due thereon to the Louisiana State Mineral Board, nor shall the Louisiana State Mineral Board be obligated to refund any consideration paid by the Lessor prior to such modification, cancellation, or abrogation, including, but not limited to, bonuses, rentals and royalties.

NOTE: The State of Louisiana does hereby reserve, and this lease shall be subject to, the imprescriptible right of surface use in the nature of a servitude in favor of the Department of Natural Resources, including its Offices and Commissions, for the sole purpose of implementing, constructing, servicing and maintaining approved coastal zone management and/or restoration projects. Utilization of any and all rights derived under this lease by the mineral lessee, its agents, successors or assigns, shall not interfere with nor hinder the reasonable surface use by the Department of Natural Resources, its Offices or Commissions, as herein above reserved.

Applicant: HAROLD J. ANDERSON, INC.

Bidder	Cash Payment	Price/Acre	Rental	Oil	Gas	Other



TRACT 37928 - Iberia Parish, Louisiana

All of the lands now or formerly constituting the beds and bottoms of all water bodies of every nature and description the title of which vests in the State of Louisiana, together with all islands arising therein and other lands formed by accretion or by reliction, where allowed by law, excepting tax adjudicated lands, and not presently under mineral lease on November 9, 2005, situated in Iberia Parish, Louisiana, and more particularly described as follows: Beginning at a point having Coordinates of X = 1,835,695.00 and Y = 440,620.00; thence East 16,270.00 feet to a point having Coordinates of X = 1,851,965.00 and Y = 440,620.00; thence South approximately 11,021 feet to a point on the North boundary of State Lease No. 500, as amended, having a Coordinate of X = 1,851,965.00; thence Westerly approximately 11,100 feet along the North boundary of said State Lease No. 500 to its Northwest corner; thence along the West boundary of said State Lease No. 500 or the Northerly extension thereof to the point of intersection with an East West line having a Coordinate of Y = 429,362.00; thence West approximately 5,173 feet to a point having Coordinates of X = 1,835,695.00 and Y = 429,362.00; thence North 11,258.00 feet to the point of beginning, **LESS AND EXCEPT** all those portions of State Lease No. 500, as amended, that may lie within the above described tract, containing approximately **133 acres**, all as more particularly outlined on a plat on file in the Office of Mineral Resources, Department of Natural Resources. All bearings, distances and coordinates are based on Louisiana Coordinate System of 1927, (North or South Zone), where applicable.

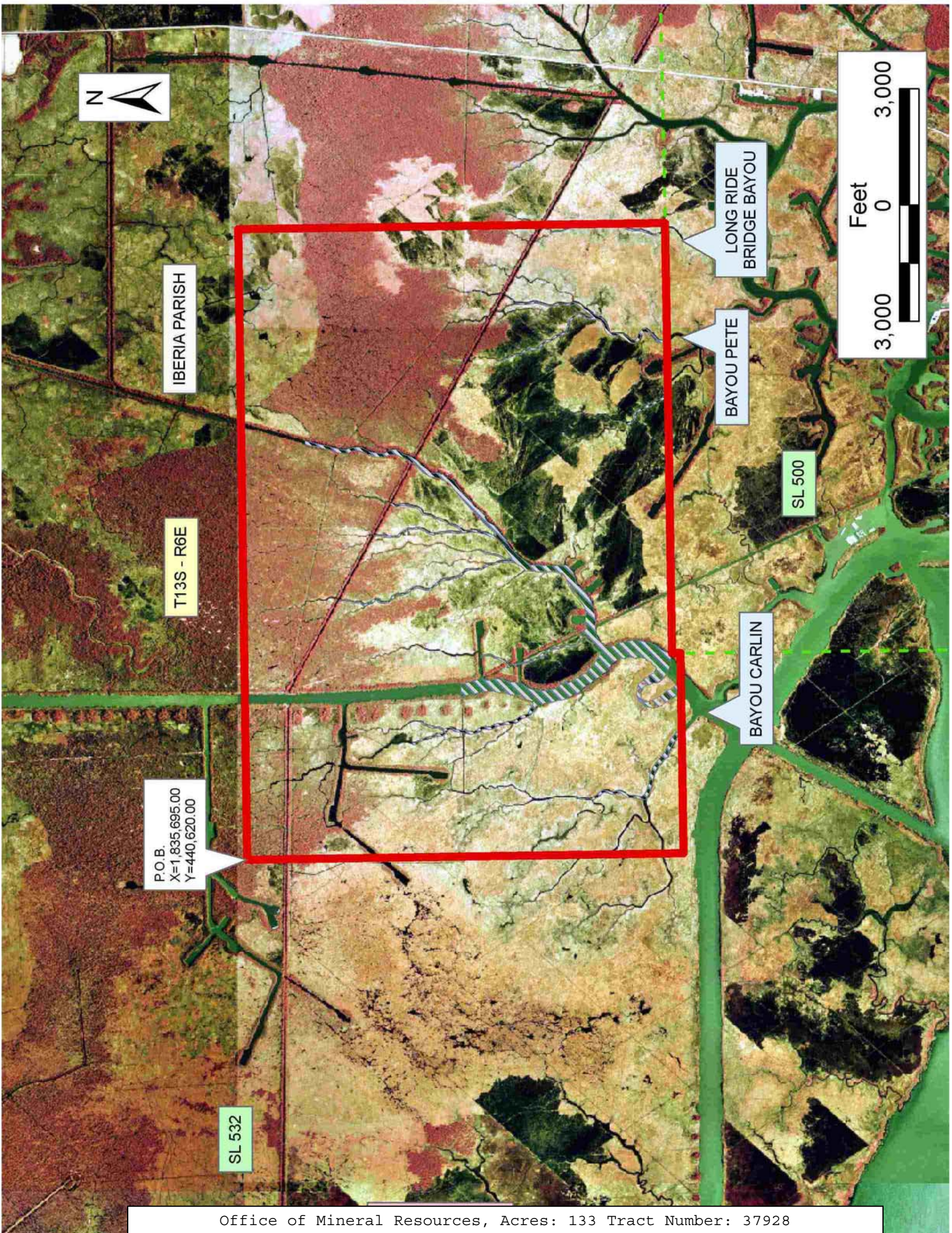
NOTE: The above description of the Tract nominated for lease has been provided and corrected, where required, exclusively by the nomination party. Any mineral lease selected from this Tract and awarded by the Louisiana State Mineral Board shall be without warranty of any kind, either express, implied, or statutory, including, but not limited to, the implied warranties of merchantability and fitness for a particular purpose. Should the mineral lease awarded by the Louisiana State Mineral Board be subsequently modified, cancelled or abrogated due to the existence of conflicting leases, operating agreements, private claims or other future obligations or conditions which may affect all or any portion of the leased Tract, it shall not relieve the Lessee of the obligation to pay any bonus due thereon to the Louisiana State Mineral Board, nor shall the Louisiana State Mineral Board be obligated to refund any consideration paid by the Lessor prior to such modification, cancellation, or abrogation, including, but not limited to, bonuses, rentals and royalties.

NOTE: The State of Louisiana does hereby reserve, and this lease shall be subject to, the imprescriptible right of surface use in the nature of a servitude in favor of the Department of Natural Resources, including its Offices and Commissions, for the sole purpose of implementing, constructing, servicing and maintaining approved coastal zone management and/or restoration projects. Utilization of any and all rights derived under this lease by the mineral lessee, its agents, successors or assigns,

shall not interfere with nor hinder the reasonable surface use by the Department of Natural Resources, its Offices or Commissions, as herein above reserved.

Applicant: OMNI ENERGY, INC.

Bidder	Cash Payment	Price/Acre	Rental	Oil	Gas	Other



IBERIA PARISH

T13S - R6E

P.O.B.
X=1,835,695.00
Y=440,620.00

SL 532

LONG RIDE
BRIDGE BAYOU

BAYOU PETE

SL 500

BAYOU CARLIN



TRACT 37929 - Cameron Parish, Louisiana

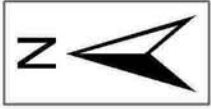
All of the lands now or formerly constituting the beds and bottoms of all water bodies of every nature and description the title of which vests in the State of Louisiana, together with all islands arising therein and other lands formed by accretion or by reliction, where allowed by law, excepting tax adjudicated lands, and not presently under mineral lease on November 9, 2005, situated in Cameron Parish, Louisiana, and more particularly described as follows: Beginning at a point having Coordinates of X = 1,570,803.00 and Y = 441,247.00; thence South 10,435.00 feet to a point having Coordinates of X = 1,570,803.00 and Y = 430,812.00; thence West 10,435.00 feet to a point having Coordinates of X = 1,560,368.00 and Y = 430,812.00; thence North 10,435.00 feet to a point having Coordinates of X = 1,560,368.00 and Y = 441,247.00; thence East 10,435.00 feet to the point of beginning, containing approximately **2,499.75 acres**, all as more particularly outlined on a plat on file in the Office of Mineral Resources, Department of Natural Resources. All bearings, distances and coordinates are based on Louisiana Coordinate System of 1927, (North or South Zone), where applicable.

NOTE: The above description of the Tract nominated for lease has been provided and corrected, where required, exclusively by the nomination party. Any mineral lease selected from this Tract and awarded by the Louisiana State Mineral Board shall be without warranty of any kind, either express, implied, or statutory, including, but not limited to, the implied warranties of merchantability and fitness for a particular purpose. Should the mineral lease awarded by the Louisiana State Mineral Board be subsequently modified, cancelled or abrogated due to the existence of conflicting leases, operating agreements, private claims or other future obligations or conditions which may affect all or any portion of the leased Tract, it shall not relieve the Lessee of the obligation to pay any bonus due thereon to the Louisiana State Mineral Board, nor shall the Louisiana State Mineral Board be obligated to refund any consideration paid by the Lessor prior to such modification, cancellation, or abrogation, including, but not limited to, bonuses, rentals and royalties.

NOTE: The State of Louisiana does hereby reserve, and this lease shall be subject to, the imprescriptible right of surface use in the nature of a servitude in favor of the Department of Natural Resources, including its Offices and Commissions, for the sole purpose of implementing, constructing, servicing and maintaining approved coastal zone management and/or restoration projects. Utilization of any and all rights derived under this lease by the mineral lessee, its agents, successors or assigns, shall not interfere with nor hinder the reasonable surface use by the Department of Natural Resources, its Offices or Commissions, as herein above reserved.

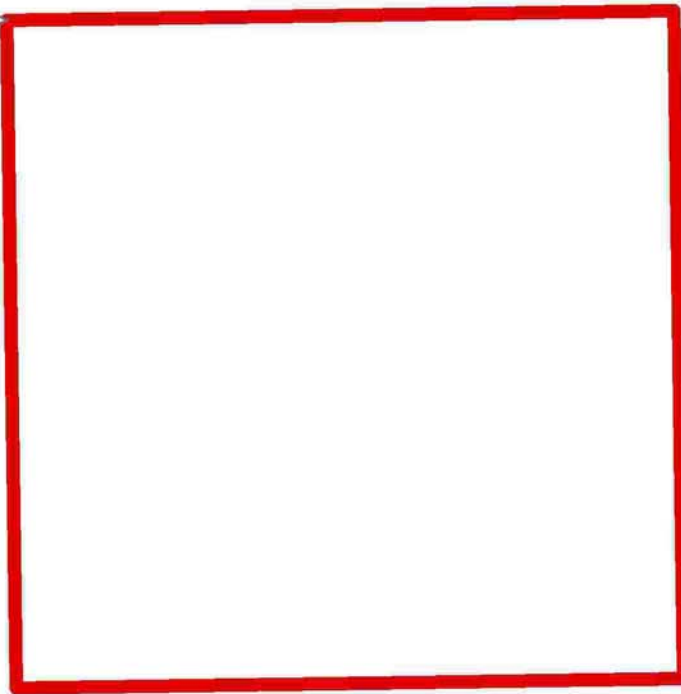
Applicant: HAROLD J. ANDERSON, INC.

Bidder	Cash Payment	Price/Acre	Rental	Oil	Gas	Other



CAMERON PARISH

P.O.B.
X = 1,570,803.00
Y = 441,247.00



GRAND LAKE

T14S - R4W

