

TRACT 37910 - Acadia Parish, Louisiana

All of the lands now or formerly constituting the beds and bottoms of all water bodies of every nature and description the title of which vests in the State of Louisiana, together with all islands arising therein and other lands formed by accretion or by reliction, where allowed by law, excepting tax adjudicated lands, and not presently under mineral lease on November 9, 2005, situated in Acadia Parish, Louisiana, and more particularly described as follows: Beginning at a point having Coordinates of X = 1,617,462.02 and Y = 617,705.06; thence East 1,882.91 feet to a point having Coordinates of X = 1,619,344.94 and Y = 617,705.06; thence North 2,885.92 feet to a point having Coordinates of X = 1,619,344.94 and Y = 620,590.98; thence South 28 degrees 40 minutes 34 seconds East 5,011.12 feet to a point having Coordinates of X = 1,621,749.56 and Y = 616,194.49; thence South 64 degrees 45 minutes 47 seconds West 3,042.28 feet to a point having Coordinates of X = 1,618,997.66 and Y = 614,897.38; thence North 28 degrees 40 minutes 34 seconds West 3,200.19 feet to the point of beginning, containing approximately **8.82 acres**, all as more particularly outlined on a plat on file in the Office of Mineral Resources, Department of Natural Resources. All bearings, distances and coordinates are based on Louisiana Coordinate System of 1927, (North or South Zone), where applicable.

NOTE: The above description of the Tract nominated for lease has been provided and corrected, where required, exclusively by the nomination party. Any mineral lease selected from this Tract and awarded by the Louisiana State Mineral Board shall be without warranty of any kind, either express, implied, or statutory, including, but not limited to, the implied warranties of merchantability and fitness for a particular purpose. Should the mineral lease awarded by the Louisiana State Mineral Board be subsequently modified, cancelled or abrogated due to the existence of conflicting leases, operating agreements, private claims or other future obligations or conditions which may affect all or any portion of the leased Tract, it shall not relieve the Lessee of the obligation to pay any bonus due thereon to the Louisiana State Mineral Board, nor shall the Louisiana State Mineral Board be obligated to refund any consideration paid by the Lessor prior to such modification, cancellation, or abrogation, including, but not limited to, bonuses, rentals and royalties.

Applicant: PATRICK L. DONOHUE PETROLEUM PROPERTIES, INC.

Bidder	Cash Payment	Price/Acre	Rental	Oil	Gas	Other

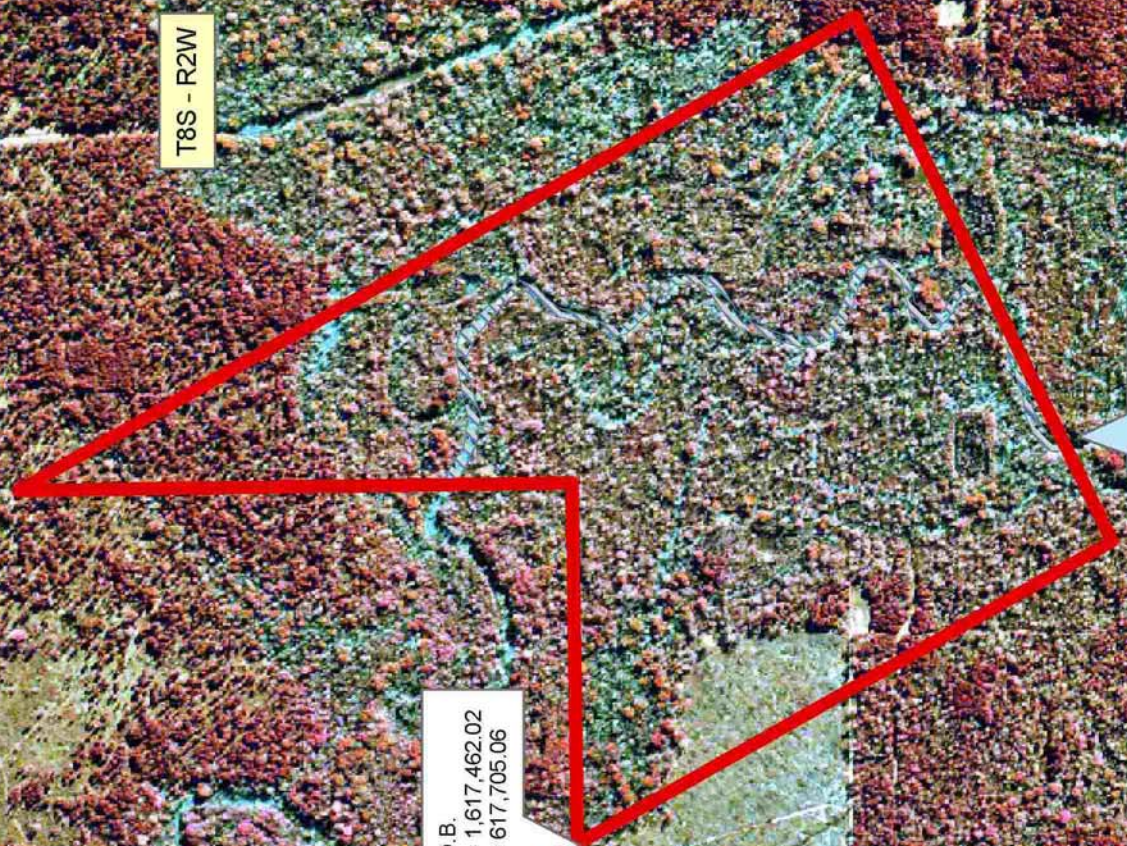


T8S - R2W

ACADIA PARISH

BAYOU
DES CANNES

P.O.B.
X = 1,617,462.02
Y = 617,705.06



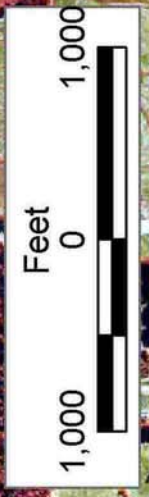
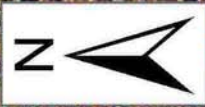
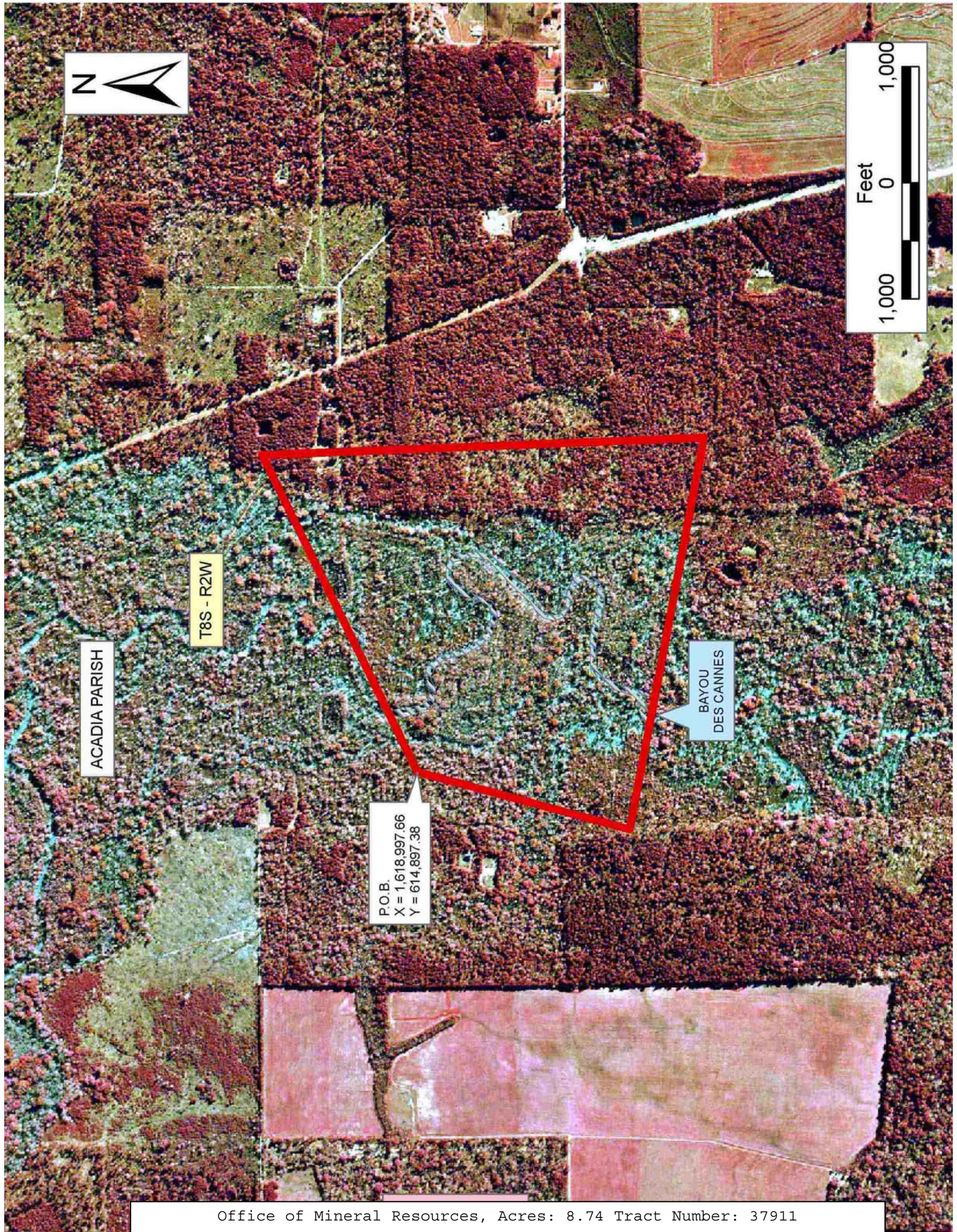
TRACT 37911 - Acadia Parish, Louisiana

All of the lands now or formerly constituting the beds and bottoms of all water bodies of every nature and description the title of which vests in the State of Louisiana, together with all islands arising therein and other lands formed by accretion or by reliction, where allowed by law, excepting tax adjudicated lands, and not presently under mineral lease on November 9, 2005, situated in Acadia Parish, Louisiana, and more particularly described as follows: Beginning at a point having Coordinates of X = 1,618,997.66 and Y = 614,897.38; thence North 64 degrees 45 minutes 47 seconds East 3,042.28 feet to a point having Coordinates of X = 1,621,749.56 and Y = 616,194.49; thence South 01 degrees 23 minutes 06 seconds East 3,810.36 feet to a point having Coordinates of X = 1,621,841.66 and Y = 612,385.24; thence North 78 degrees 21 minutes 43 seconds West 3,433.36 feet to a point having Coordinates of X = 1,618,478.89 and Y = 613,077.85; thence North 15 degrees 54 minutes 49 seconds East 1,892.04 to the point of beginning, containing approximately **8.74 acres**, all as more particularly outlined on a plat on file in the Office of Mineral Resources, Department of Natural Resources. All bearings, distances and coordinates are based on Louisiana Coordinate System of 1927, (North or South Zone), where applicable.

NOTE: The above description of the Tract nominated for lease has been provided and corrected, where required, exclusively by the nomination party. Any mineral lease selected from this Tract and awarded by the Louisiana State Mineral Board shall be without warranty of any kind, either express, implied, or statutory, including, but not limited to, the implied warranties of merchantability and fitness for a particular purpose. Should the mineral lease awarded by the Louisiana State Mineral Board be subsequently modified, cancelled or abrogated due to the existence of conflicting leases, operating agreements, private claims or other future obligations or conditions which may affect all or any portion of the leased Tract, it shall not relieve the Lessee of the obligation to pay any bonus due thereon to the Louisiana State Mineral Board, nor shall the Louisiana State Mineral Board be obligated to refund any consideration paid by the Lessor prior to such modification, cancellation, or abrogation, including, but not limited to, bonuses, rentals and royalties.

Bidder	Cash Payment	Price/Acre	Rental	Oil	Gas	Other

Applicant: PATRICK L. DONOHUE PETROLEUM PROPERTIES, INC.



ACADIA PARISH

T8S - R2W

BAYOU
DES CANNES

P.O.B.
X = 1,618,997.66
Y = 614,897.38

TRACT 37912 - Acadia Parish, Louisiana

All of the lands now or formerly constituting the beds and bottoms of all water bodies of every nature and description the title of which vests in the State of Louisiana, together with all islands arising therein and other lands formed by accretion or by reliction, where allowed by law, excepting tax adjudicated lands, and not presently under mineral lease on November 9, 2005, situated in Acadia Parish, Louisiana, and more particularly described as follows: Beginning at a point having Coordinates of X = 1,618,478.89 and Y = 613,077.85; thence South 78 degrees 21 minutes 43 seconds East 3,433.36 feet to a point having Coordinates of X = 1,621,841.66 and Y = 612,385.24; thence South 19 degrees 50 minutes 35 seconds West 4,865.25 feet to a point having Coordinates of X = 1,620,190.18 and Y = 607,808.86; thence North 72 degrees 50 minutes 22 seconds West 3,401.42 feet to a point having Coordinates of X = 1,616,940.19 and Y = 608,812.45; thence North 19 degrees 50 minutes 11 seconds East 4,534.45 feet to the point of beginning, containing approximately **11.82 acres**, all as more particularly outlined on a plat on file in the Office of Mineral Resources, Department of Natural Resources. All bearings, distances and coordinates are based on Louisiana Coordinate System of 1927, (North or South Zone), where applicable.

NOTE: The above description of the Tract nominated for lease has been provided and corrected, where required, exclusively by the nomination party. Any mineral lease selected from this Tract and awarded by the Louisiana State Mineral Board shall be without warranty of any kind, either express, implied, or statutory, including, but not limited to, the implied warranties of merchantability and fitness for a particular purpose. Should the mineral lease awarded by the Louisiana State Mineral Board be subsequently modified, cancelled or abrogated due to the existence of conflicting leases, operating agreements, private claims or other future obligations or conditions which may affect all or any portion of the leased Tract, it shall not relieve the Lessee of the obligation to pay any bonus due thereon to the Louisiana State Mineral Board, nor shall the Louisiana State Mineral Board be obligated to refund any consideration paid by the Lessor prior to such modification, cancellation, or abrogation, including, but not limited to, bonuses, rentals and royalties.

Bidder	Cash Payment	Price/Acre	Rental	Oil	Gas	Other

Applicant: PATRICK L. DONOHUE PETROLEUM PROPERTIES, INC.



T8S - R2W

ACADIA PARISH

BAYOU
DES CANNES

P.O.B.
X = 1,618,478.89
Y = 613,077.85



TRACT 37913 - Calcasieu Parish, Louisiana

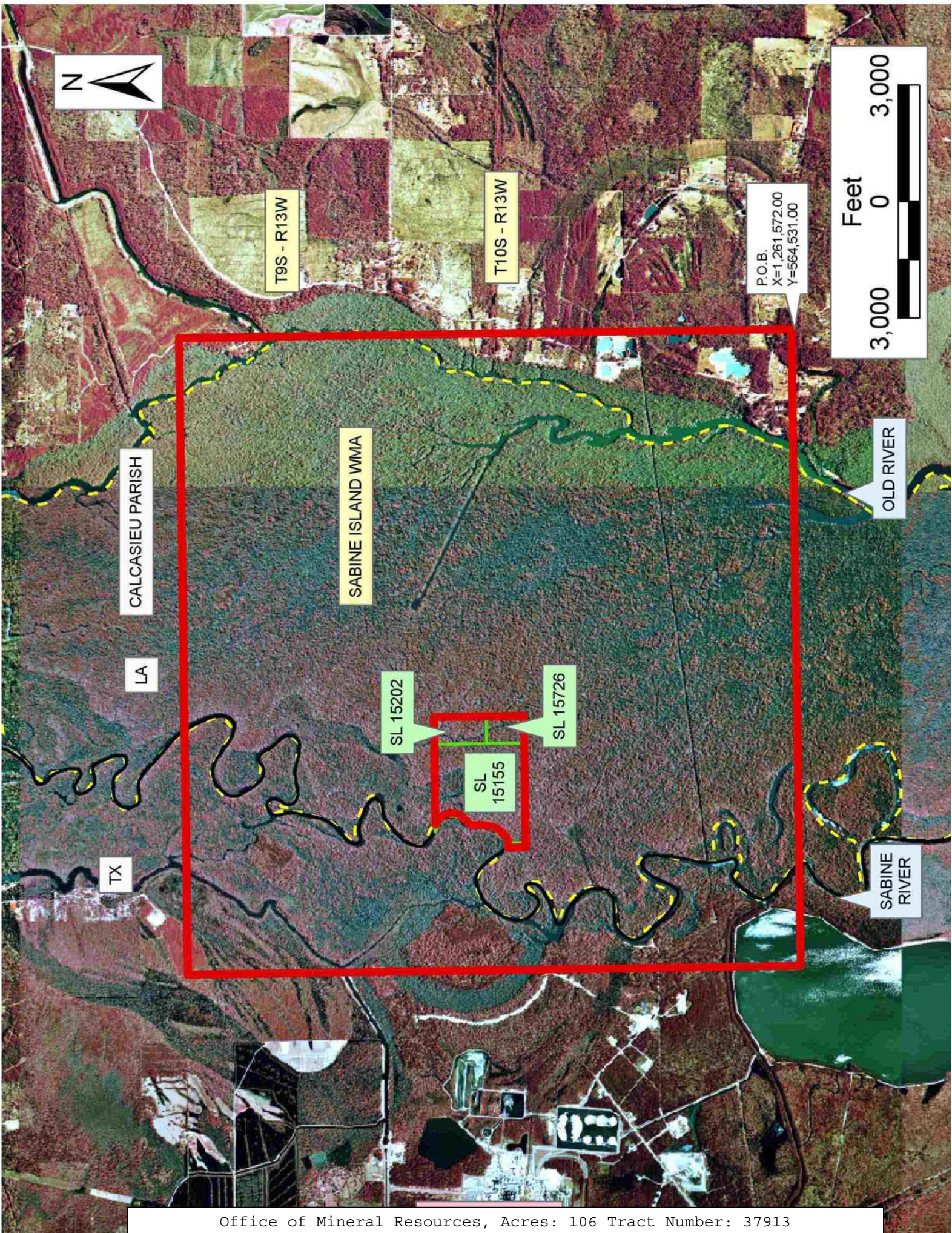
All of the lands now or formerly constituting the beds and bottoms of all water bodies of every nature and description the title of which vests in the State of Louisiana, together with all islands arising therein and other lands formed by accretion or by reliction, where allowed by law, excepting tax adjudicated lands, and not presently under mineral lease on November 9, 2005, situated in Calcasieu Parish, Louisiana, and more particularly described as follows: Beginning at a point having Coordinates of X = 1,261,572.00 and Y = 564,531.00; thence West 16,419.00 feet to a point having Coordinates of X = 1,245,153.00 and Y = 564,531.00; thence North 15,802.00 feet to a point having Coordinates of X = 1,245,153.00 and Y = 580,333.00; thence East 16,419.00 feet to a point having Coordinates of X = 1,261,572.00 and Y = 580,333.00; thence South 15,802.00 feet to the point of beginning, **LESS AND EXCEPT** any portion of the Sabine Island Wildlife Management Area that may lie within the above described tract, and **ALSO LESS AND EXCEPT** those portions of State Lease No. 15155, as amended, State Lease No. 15202, as amended, and State Lease No. 15726, as amended that lie within the above described tract and being more fully described as follows: Beginning at the Northeast corner of said State Lease No. 15202 having Coordinates of X = 1,251,703.41 and Y = 573,899.80; thence South 1,349.80 feet on the East boundary of said State Lease No. 15202 to its Southeast corner and the Northeast corner of said State Lease No. 15726 having Coordinates of X = 1,251,703.41 and Y = 572,550.00; thence along the boundary of said State Lease No. 15726 the following courses: South 970.20 feet and West 703.41 feet to its Southwest corner and the Southeast corner of said State Lease No. 15155 having Coordinates of X = 1,251,000.00 and Y = 571,579.80; thence along the boundary of said State Lease No. 15155 the following courses: West 2,680.09 feet, North approximately 591 feet, Northeasterly to its Northernmost Northwest corner having a Coordinate of Y = 573,899.80; thence East approximately 2,065 feet along the North boundary of said State Lease No. 15155 to its Northeast corner and the Northwest corner of said State Lease No. 15202 having Coordinates of X = 1,251,000.00 and Y = 573,899.80; thence East 703.41 feet on the North boundary of said State Lease No. 15202 to the point of beginning, containing approximately **106 acres**, **LESS AND EXCEPT** that portion thereof, if any, located West of the boundary line between the States of Texas and Louisiana as determined by the report of the Special Master and adjudicated by the Supreme Court of the United States in litigation styled **Texas v. Louisiana, et al No. 36 Original**, or as otherwise approved by said court, all as more particularly outlined on a plat on file in the Office of Mineral Resources, Department of Natural Resources. All bearings, distances and coordinates are based on Louisiana Coordinate System of 1927, (North or South Zone), where applicable.

NOTE: The above description of the Tract nominated for lease has been provided and corrected, where required, exclusively by the nomination party. Any mineral lease selected from this Tract and awarded by the Louisiana State Mineral Board shall be without warranty of any kind, either express, implied, or statutory, including, but not limited to, the

implied warranties of merchantability and fitness for a particular purpose. Should the mineral lease awarded by the Louisiana State Mineral Board be subsequently modified, cancelled or abrogated due to the existence of conflicting leases, operating agreements, private claims or other future obligations or conditions which may affect all or any portion of the leased Tract, it shall not relieve the Lessee of the obligation to pay any bonus due thereon to the Louisiana State Mineral Board, nor shall the Louisiana State Mineral Board be obligated to refund any consideration paid by the Lessor prior to such modification, cancellation, or abrogation, including, but not limited to, bonuses, rentals and royalties.

Applicant: FRANZ P. SCHOEFFLER

Bidder	Cash Payment	Price/Acre	Rental	Oil	Gas	Other



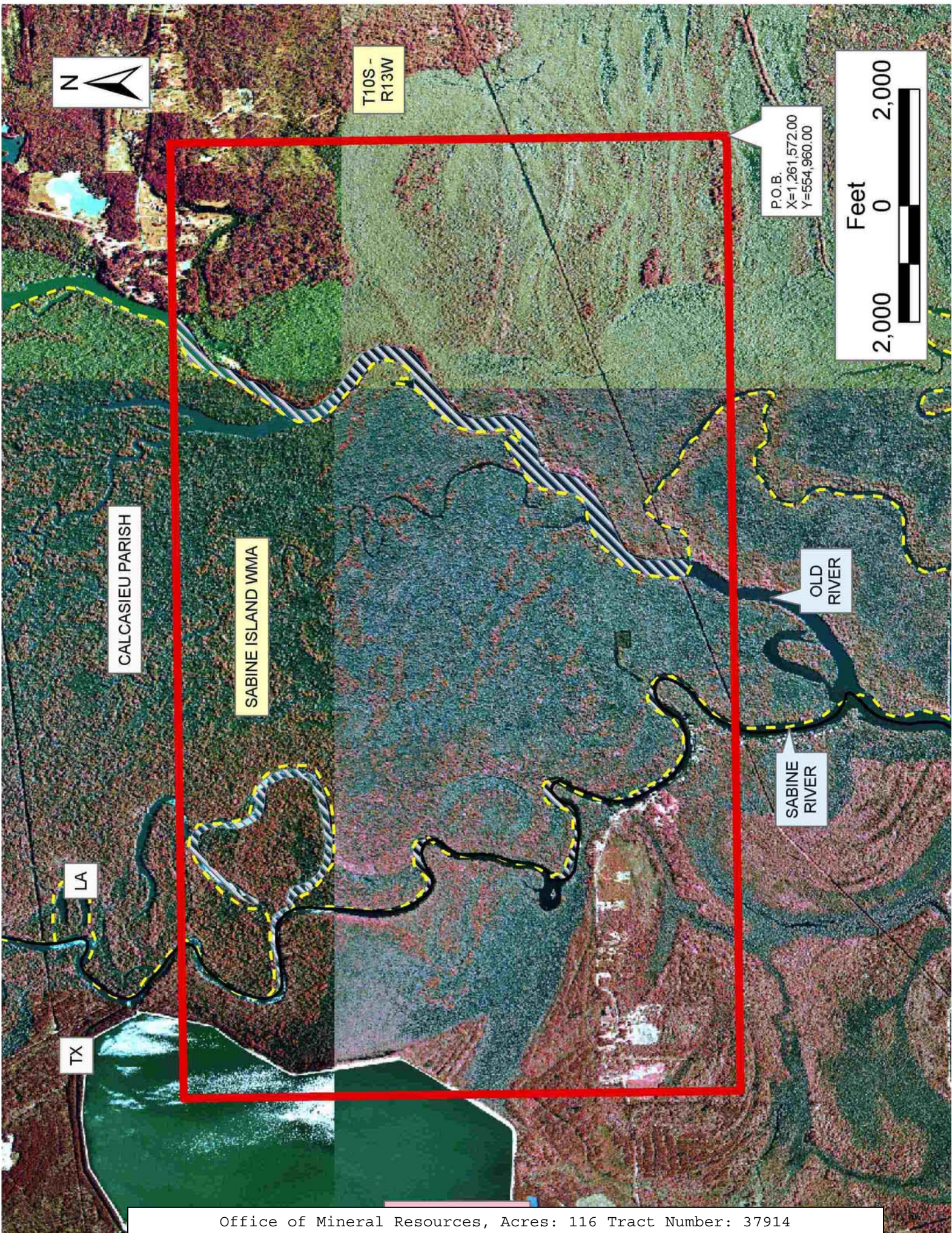
TRACT 37914 - Calcasieu Parish, Louisiana

All of the lands now or formerly constituting the beds and bottoms of all water bodies of every nature and description the title of which vests in the State of Louisiana, together with all islands arising therein and other lands formed by accretion or by reliction, where allowed by law, excepting tax adjudicated lands, and not presently under mineral lease on November 9, 2005, situated in Calcasieu Parish, Louisiana, and more particularly described as follows: Beginning at a point having Coordinates of X = 1,261,572.00 and Y = 554,960.00; thence West 16,419.00 feet to a point having Coordinates of X = 1,245,153.00 and Y = 554,960.00; thence North 9,571.00 feet to a point having Coordinates of X = 1,245,153.00 and Y = 564,531.00; thence East 16,419.00 feet to a point having Coordinates of X = 1,261,572.00 and Y = 564,531.00; thence South 9,571.00 feet to the point of beginning, **LESS AND EXCEPT** any portion of the Sabine Island Wildlife Management Area that may lie within the above described tract, containing approximately **116 acres**, **LESS AND EXCEPT** that portion thereof, if any, located West of the boundary line between the States of Texas and Louisiana as determined by the report of the Special Master and adjudicated by the Supreme Court of the United States in litigation styled **Texas v. Louisiana, et al No. 36 Original**, or as otherwise approved by said court, all as more particularly outlined on a plat on file in the Office of Mineral Resources, Department of Natural Resources. All bearings, distances and coordinates are based on Louisiana Coordinate System of 1927, (North or South Zone), where applicable.

NOTE: The above description of the Tract nominated for lease has been provided and corrected, where required, exclusively by the nomination party. Any mineral lease selected from this Tract and awarded by the Louisiana State Mineral Board shall be without warranty of any kind, either express, implied, or statutory, including, but not limited to, the implied warranties of merchantability and fitness for a particular purpose. Should the mineral lease awarded by the Louisiana State Mineral Board be subsequently modified, cancelled or abrogated due to the existence of conflicting leases, operating agreements, private claims or other future obligations or conditions which may affect all or any portion of the leased Tract, it shall not relieve the Lessee of the obligation to pay any bonus due thereon to the Louisiana State Mineral Board, nor shall the Louisiana State Mineral Board be obligated to refund any consideration paid by the Lessor prior to such modification, cancellation, or abrogation, including, but not limited to, bonuses, rentals and royalties.

Applicant: FRANZ P. SCHOEFFLER

Bidder	Cash Payment	Price/Acre	Rental	Oil	Gas	Other



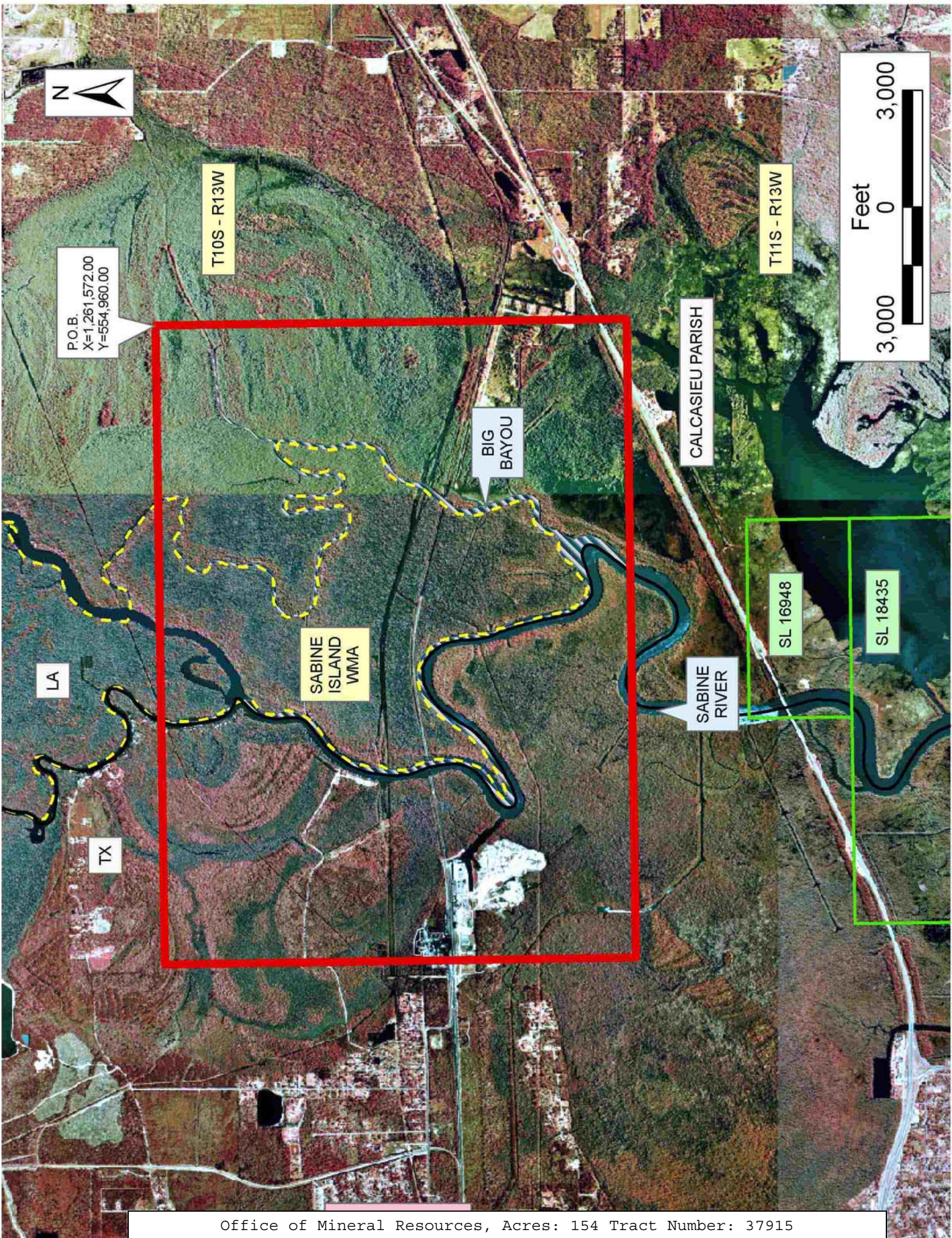
TRACT 37915 - Calcasieu Parish, Louisiana

All of the lands now or formerly constituting the beds and bottoms of all water bodies of every nature and description the title of which vests in the State of Louisiana, together with all islands arising therein and other lands formed by accretion or by reliction, where allowed by law, excepting tax adjudicated lands, and not presently under mineral lease on November 9, 2005, situated in Calcasieu Parish, Louisiana, and more particularly described as follows: Beginning at a point having Coordinates of X = 1,261,572.00 and Y = 554,960.00; thence South 12,111.00 feet to a point having Coordinates of X = 1,261,572.00 and Y = 542,849.00; thence West 16,419.00 feet to a point having Coordinates X = 1,245,153.00 and Y = 542,849.00; thence North 12,111.00 feet to a point having Coordinates of X = 1,245,153.00 and Y = 554,960.00; thence East 16,419.00 feet to the point of beginning, **LESS AND EXCEPT** any portion of the Sabine Island Wildlife Management Area that may lie within the above described tract, containing approximately **154 acres, LESS AND EXCEPT** that portion thereof, if any, located West of the boundary line between the States of Texas and Louisiana as determined by the report of the Special Master and adjudicated by the Supreme Court of the United States in litigation styled **Texas v. Louisiana, et al No. 36 Original**, or as otherwise approved by said court, all as more particularly outlined on a plat on file in the Office of Mineral Resources, Department of Natural Resources. All bearings, distances and coordinates are based on Louisiana Coordinate System of 1927, (North or South Zone), where applicable.

NOTE: The above description of the Tract nominated for lease has been provided and corrected, where required, exclusively by the nomination party. Any mineral lease selected from this Tract and awarded by the Louisiana State Mineral Board shall be without warranty of any kind, either express, implied, or statutory, including, but not limited to, the implied warranties of merchantability and fitness for a particular purpose. Should the mineral lease awarded by the Louisiana State Mineral Board be subsequently modified, cancelled or abrogated due to the existence of conflicting leases, operating agreements, private claims or other future obligations or conditions which may affect all or any portion of the leased Tract, it shall not relieve the Lessee of the obligation to pay any bonus due thereon to the Louisiana State Mineral Board, nor shall the Louisiana State Mineral Board be obligated to refund any consideration paid by the Lessor prior to such modification, cancellation, or abrogation, including, but not limited to, bonuses, rentals and royalties.

Applicant: FRANZ P. SCHOEFFLER

Bidder	Cash Payment	Price/Acre	Rental	Oil	Gas	Other



P.O.B.
X=1,261,572.00
Y=554,960.00

T10S - R13W

T11S - R13W



LA

TX

SABINE
ISLAND
WMA

BIG
BAYOU

CALCASIEU PARISH

SABINE
RIVER

SL 16948

SL 18435

TRACT 37916 - Cameron Parish, Louisiana

All of the lands now or formerly constituting the beds and bottoms of all water bodies of every nature and description the title of which vests in the State of Louisiana, together with all islands arising therein and other lands formed by accretion or by reliction, where allowed by law, excepting tax adjudicated lands, and not presently under mineral lease on November 9, 2005, situated in Cameron Parish, Louisiana, and more particularly described as follows: Beginning at a point on the East line of State Lease No. 7555 as amended, and the Southwest corner of State Lease No. 17807, having Coordinates of X = 1,223,381.79 and Y = 485,511.52; thence East 5,479.06 feet along the South line of said State Lease No. 17807 to a point having Coordinates of X = 1,228,860.85 and Y = 485,511.52, also being the most Western Northwest corner of State Lease No. 17915; thence South 6,379.85 feet along the West line of said State Lease No. 17915 to its Southwest corner having Coordinates of X = 1,228,860.85 and Y = 479,131.67; thence East 4,666.74 feet along the South line of said State Lease No. 17915 to its Southeast corner having Coordinates of X = 1,233,527.59 and Y = 479,131.67; thence South 4,156.67 feet to the Northeast corner of State Lease No. 18530 having Coordinates of X = 1,233,527.59 and Y = 474,975.00; thence West 5,963.72 feet along the North line of said State Lease No. 18530 to its Northwest corner; thence North 3,025.00 feet to a point having Coordinates of X = 1,227,563.87 and Y = 478,000.00; thence West 3,563.87 feet to the Southeast corner of State Lease No. 17701 having Coordinates of X = 1,224,000.00 and Y = 478,000.00; thence North 2,263.34 feet along the East line of said State Lease No. 17701 to its Northeast corner and a point on the South line of said State Lease No. 7555, having Coordinates of X = 1,224,000.00 and Y = 480,263.34; thence along the boundary of said State Lease the following: North 56 degrees 18 minutes 36 seconds East 480.74 feet, North 46 degree 00 minutes 18 seconds East 403.11 feet, North 32 degrees 04 minutes 56 seconds East 395.38 feet, North 15 degrees 43 minutes 55 seconds West 368.82 feet, North 29 degrees 03 minutes 17 seconds West 514.78 feet, North 36 degrees 52 minutes 12 seconds West 500.00 feet, North 49 degrees 45 minutes 49 seconds West 510.88 feet, North 47 degrees 45 minutes 50 seconds West 513.25 feet, North 43 degrees 01 minutes 30 seconds West 512.96 feet, North 22 degrees 50 minutes 01 West 206.15 feet, North 14 degrees 44 minutes 37 seconds West 196.47 feet, North 220.00 feet, North 07 degrees 58 minutes 11 seconds East 504.88 feet and North 17 degrees 07 minutes 54 seconds East 1,058.48 feet to the point of beginning, containing approximately **1272.00 acres**, all as more particularly outlined on a plat on file in the Office of Mineral Resources, Department of Natural Resources. All bearings, distances and coordinates are based on Louisiana Coordinate System of 1927, (North or South Zone), where applicable.

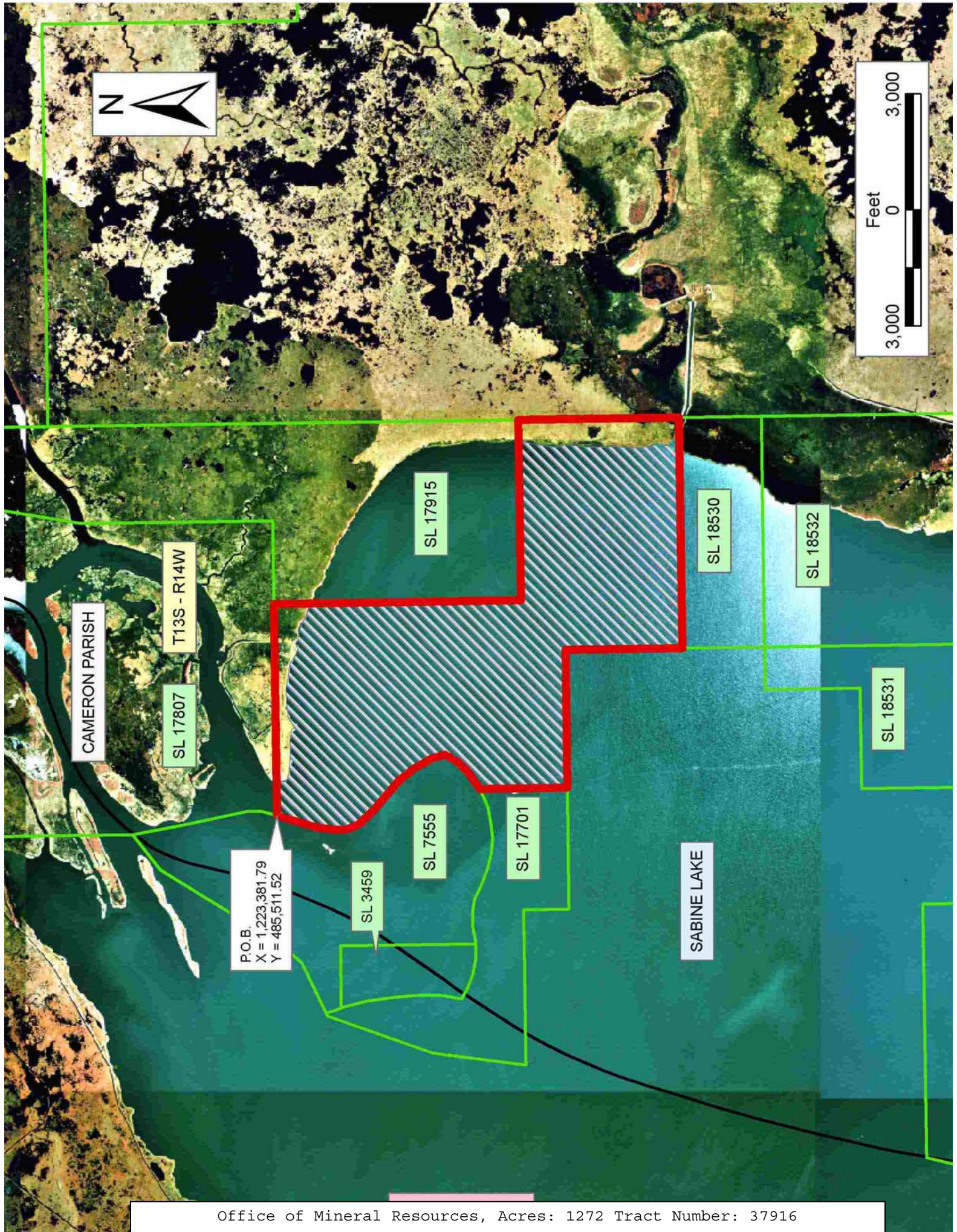
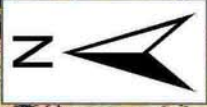
NOTE: The above description of the Tract nominated for lease has been provided and corrected, where required, exclusively by the nomination party. Any mineral lease selected from this Tract and awarded by the Louisiana State Mineral Board shall be without warranty of any kind,

either express, implied, or statutory, including, but not limited to, the implied warranties of merchantability and fitness for a particular purpose. Should the mineral lease awarded by the Louisiana State Mineral Board be subsequently modified, cancelled or abrogated due to the existence of conflicting leases, operating agreements, private claims or other future obligations or conditions which may affect all or any portion of the leased Tract, it shall not relieve the Lessee of the obligation to pay any bonus due thereon to the Louisiana State Mineral Board, nor shall the Louisiana State Mineral Board be obligated to refund any consideration paid by the Lessor prior to such modification, cancellation, or abrogation, including, but not limited to, bonuses, rentals and royalties.

NOTE: The State of Louisiana does hereby reserve, and this lease shall be subject to, the imprescriptible right of surface use in the nature of a servitude in favor of the Department of Natural Resources, including its Offices and Commissions, for the sole purpose of implementing, constructing, servicing and maintaining approved coastal zone management and/or restoration projects. Utilization of any and all rights derived under this lease by the mineral lessee, its agents, successors or assigns, shall not interfere with nor hinder the reasonable surface use by the Department of Natural Resources, its Offices or Commissions, as herein above reserved.

Applicant: SULLY OIL

Bidder	Cash Payment	Price/Acre	Rental	Oil	Gas	Other



CAMERON PARISH

T13S - R14W

SL 17807

P.O.B.
X = 1,223,381.79
Y = 485,511.52

SL 3459

SL 7555

SL 17701

SL 17915

SABINE LAKE

SL 18530

SL 18532

SL 18531

TRACT 37917 - Cameron Parish, Louisiana

All of the lands now or formerly constituting the beds and bottoms of all water bodies of every nature and description the title of which vests in the State of Louisiana, together with all islands arising therein and other lands formed by accretion or by reliction, where allowed by law, excepting tax adjudicated lands, and not presently under mineral lease on November 9, 2005, situated in Cameron Parish, Louisiana, and more particularly described as follows: Beginning at the Southwest corner of State Lease No. 17701, also being a point on the Texas Louisiana Boundary having Coordinates of X = 1,216,843.57 and Y = 479,170.00; thence East 4,016.43 feet along the South line of said State Lease 17701 to an interior corner having Coordinates of X = 1,220,860.00 and Y = 479,170.00; thence South 1170.00 feet along the West line of said State Lease No. 17701 to its most South Southwest corner having Coordinates of X = 1,220,860.00 and Y = 478,000.00; thence South 9,142.88 feet to the Northeast corner of State Lease No. 18721 having Coordinates of X = 1,220,860.00 and Y = 468,857.12; thence West 6,558.50 feet along the North line of said State Lease No. 18721 to its Northwest corner and a point on the said Texas Louisiana boundary having Coordinates of X = 1,214,301.49 and Y = 468,857.12; thence along the said Texas Louisiana boundary the following courses: North 11 degrees 52 minutes 43 seconds East 1,474.45 feet, North 25 degrees 46 minutes 49 seconds East 816.24 feet, North 48 degrees 11 minutes 45 seconds East 697.59 feet, North 13 degrees 32 minutes 16 seconds East 2,648.59 feet and North 08 degrees 18 minutes 12 seconds East 5,148.97 feet to the point of beginning, containing approximately **1187.95 acres, LESS AND EXCEPT** that portion thereof, if any, located West of the boundary line between the States of Texas and Louisiana as determined by the report of the Special Master and adjudicated by the Supreme Court of the United States in litigation styled **Texas v. Louisiana, et al No. 36 Original**, or as otherwise approved by said court, all as more particularly outlined on a plat on file in the Office of Mineral Resources, Department of Natural Resources. All bearings, distances and coordinates are based on Louisiana Coordinate System of 1927, (North or South Zone), where applicable.

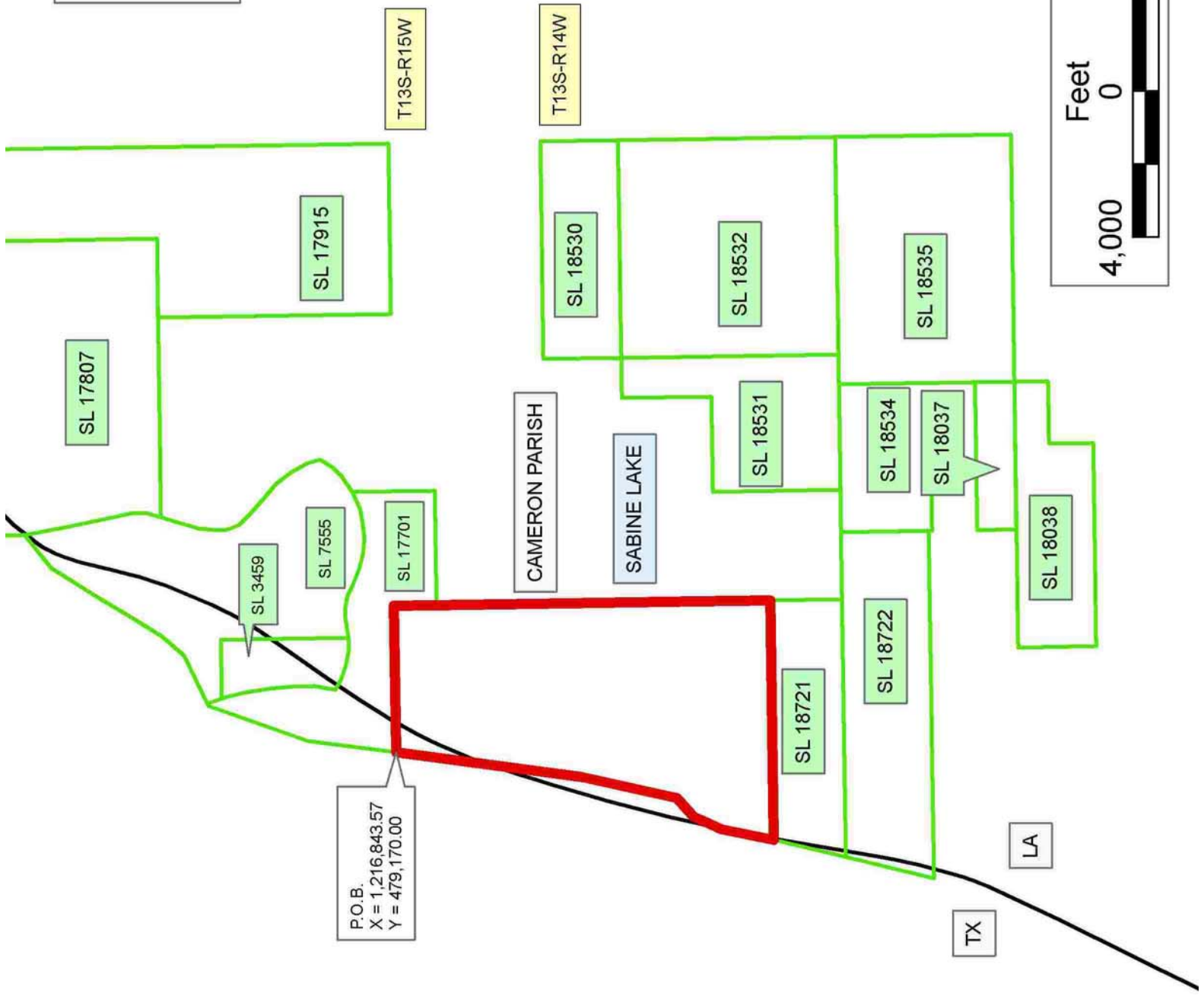
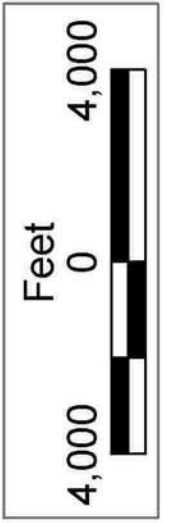
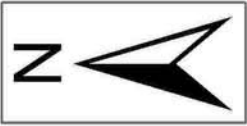
NOTE: The above description of the Tract nominated for lease has been provided and corrected, where required, exclusively by the nomination party. Any mineral lease selected from this Tract and awarded by the Louisiana State Mineral Board shall be without warranty of any kind, either express, implied, or statutory, including, but not limited to, the implied warranties of merchantability and fitness for a particular purpose. Should the mineral lease awarded by the Louisiana State Mineral Board be subsequently modified, cancelled or abrogated due to the existence of conflicting leases, operating agreements, private claims or other future obligations or conditions which may affect all or any portion of the leased Tract, it shall not relieve the Lessee of the obligation to pay any bonus due thereon to the Louisiana State Mineral Board, nor shall the Louisiana State Mineral Board be obligated to refund any consideration

paid by the Lessor prior to such modification, cancellation, or abrogation, including, but not limited to, bonuses, rentals and royalties.

NOTE: The State of Louisiana does hereby reserve, and this lease shall be subject to, the imprescriptible right of surface use in the nature of a servitude in favor of the Department of Natural Resources, including its Offices and Commissions, for the sole purpose of implementing, constructing, servicing and maintaining approved coastal zone management and/or restoration projects. Utilization of any and all rights derived under this lease by the mineral lessee, its agents, successors or assigns, shall not interfere with nor hinder the reasonable surface use by the Department of Natural Resources, its Offices or Commissions, as herein above reserved.

Applicant: SULLY OIL

Bidder	Cash Payment	Price/Acre	Rental	Oil	Gas	Other



P.O.B.
X = 1,216,843.57
Y = 479,170.00

TRACT 37918 - Cameron Parish, Louisiana

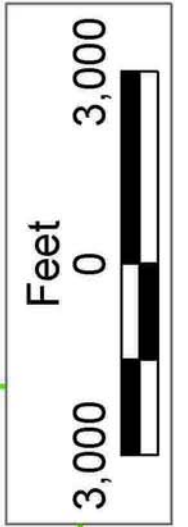
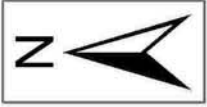
All of the lands now or formerly constituting the beds and bottoms of all water bodies of every nature and description the title of which vests in the State of Louisiana, together with all islands arising therein and other lands formed by accretion or by reliction, where allowed by law, excepting tax adjudicated lands, and not presently under mineral lease on November 9, 2005, situated in Cameron Parish, Louisiana, and more particularly described as follows: Beginning at a Southwest corner of State Lease No. 17701 having Coordinates of X = 1,220,860.00 and Y = 478,000.00; thence East 3,140.00 feet along the South line of said State Lease No. 17701 to its Southeast corner having Coordinates of X = 1,224,000.00 and Y = 478,000.00; thence East 3,563.87 feet to a point having Coordinates of X = 1,227,563.87 and Y = 478,000.00; thence South 3,025.00 feet to the Northwest corner of State Lease No. 18530 having Coordinates of X = 1,227,563.87 and Y = 474,975.00; thence South 2,125.00 feet along the West line of said State Lease No. 18530 to its Southwest corner, the Northwest corner of State Lease No. 18532 and Northeast corner of State Lease 18531 having Coordinates of X = 1,227,563.87 and Y = 472,850.00; thence along the boundary of said State Lease No. 18531 the following: West 1,100.00 feet, South 2,455.76 feet, West 2,600.00 feet and South 3,500.00 feet to its Southwest corner having Coordinates of X = 1,223,863.87 and Y = 466,894.24, also being a point on the North line of State Lease No. 18534; thence West 3,003.87 feet along the North boundaries of said State Lease No. 18534 and State Lease No. 18722 to the Southeast corner of State Lease No. 18721 having Coordinates of X = 1,220,860.00 and Y = 466,894.24; thence North 1,962.88 feet along the East line of said State Lease No. 18721 to its Northeast corner; thence continue North 9,142.88 feet to the point of beginning, containing approximately **1349.87 acres**, all as more particularly outlined on a plat on file in the Office of Mineral Resources, Department of Natural Resources. All bearings, distances and coordinates are based on Louisiana Coordinate System of 1927, (North or South Zone), where applicable.

NOTE: The above description of the Tract nominated for lease has been provided and corrected, where required, exclusively by the nomination party. Any mineral lease selected from this Tract and awarded by the Louisiana State Mineral Board shall be without warranty of any kind, either express, implied, or statutory, including, but not limited to, the implied warranties of merchantability and fitness for a particular purpose. Should the mineral lease awarded by the Louisiana State Mineral Board be subsequently modified, cancelled or abrogated due to the existence of conflicting leases, operating agreements, private claims or other future obligations or conditions which may affect all or any portion of the leased Tract, it shall not relieve the Lessee of the obligation to pay any bonus due thereon to the Louisiana State Mineral Board, nor shall the Louisiana State Mineral Board be obligated to refund any consideration paid by the Lessor prior to such modification, cancellation, or abrogation, including, but not limited to, bonuses, rentals and royalties.

NOTE: The State of Louisiana does hereby reserve, and this lease shall be subject to, the imprescriptible right of surface use in the nature of a servitude in favor of the Department of Natural Resources, including its Offices and Commissions, for the sole purpose of implementing, constructing, servicing and maintaining approved coastal zone management and/or restoration projects. Utilization of any and all rights derived under this lease by the mineral lessee, its agents, successors or assigns, shall not interfere with nor hinder the reasonable surface use by the Department of Natural Resources, its Offices or Commissions, as herein above reserved.

Applicant: SULLY OIL

Bidder	Cash Payment	Price/Acre	Rental	Oil	Gas	Other



P.O.B.
X = 1,220,860.00
Y = 478,000.00

TRACT 37919 - Cameron Parish, Louisiana

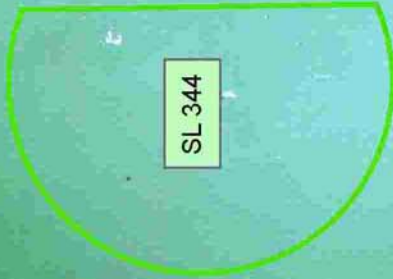
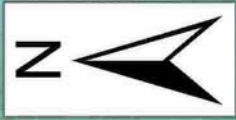
All of the lands now or formerly constituting the beds and bottoms of all water bodies of every nature and description the title of which vests in the State of Louisiana, together with all islands arising therein and other lands formed by accretion or by reliction, where allowed by law, excepting tax adjudicated lands, and not presently under mineral lease on November 9, 2005, situated in Cameron Parish, Louisiana, and more particularly described as follows: Beginning at a point having Coordinates of X = 1,549,933.00 and Y = 451,682.00; thence West 10,435.00 feet to a point having Coordinates of X = 1,539,498.00 and Y = 451,682.00; thence North 11,308.00 feet to a point having Coordinates of X = 1,539,498.00 and Y = 462,990.00; thence East 10,435.00 feet to a point having Coordinates of X = 1,549,933.00 and Y = 462,990.00; thence South 11,308.00 feet to the point of beginning, containing approximately **2,382 acres**, all as more particularly outlined on a plat on file in the Office of Mineral Resources, Department of Natural Resources. All bearings, distances and coordinates are based on Louisiana Coordinate System of 1927, (North or South Zone), where applicable.

NOTE: The above description of the Tract nominated for lease has been provided and corrected, where required, exclusively by the nomination party. Any mineral lease selected from this Tract and awarded by the Louisiana State Mineral Board shall be without warranty of any kind, either express, implied, or statutory, including, but not limited to, the implied warranties of merchantability and fitness for a particular purpose. Should the mineral lease awarded by the Louisiana State Mineral Board be subsequently modified, cancelled or abrogated due to the existence of conflicting leases, operating agreements, private claims or other future obligations or conditions which may affect all or any portion of the leased Tract, it shall not relieve the Lessee of the obligation to pay any bonus due thereon to the Louisiana State Mineral Board, nor shall the Louisiana State Mineral Board be obligated to refund any consideration paid by the Lessor prior to such modification, cancellation, or abrogation, including, but not limited to, bonuses, rentals and royalties.

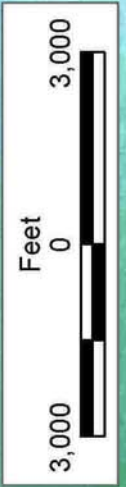
NOTE: The State of Louisiana does hereby reserve, and this lease shall be subject to, the imprescriptible right of surface use in the nature of a servitude in favor of the Department of Natural Resources, including its Offices and Commissions, for the sole purpose of implementing, constructing, servicing and maintaining approved coastal zone management and/or restoration projects. Utilization of any and all rights derived under this lease by the mineral lessee, its agents, successors or assigns, shall not interfere with nor hinder the reasonable surface use by the Department of Natural Resources, its Offices or Commissions, as herein above reserved.

Applicant: HAROLD J. ANDERSON, INC.

Bidder	Cash Payment	Price/Acre	Rental	Oil	Gas	Other



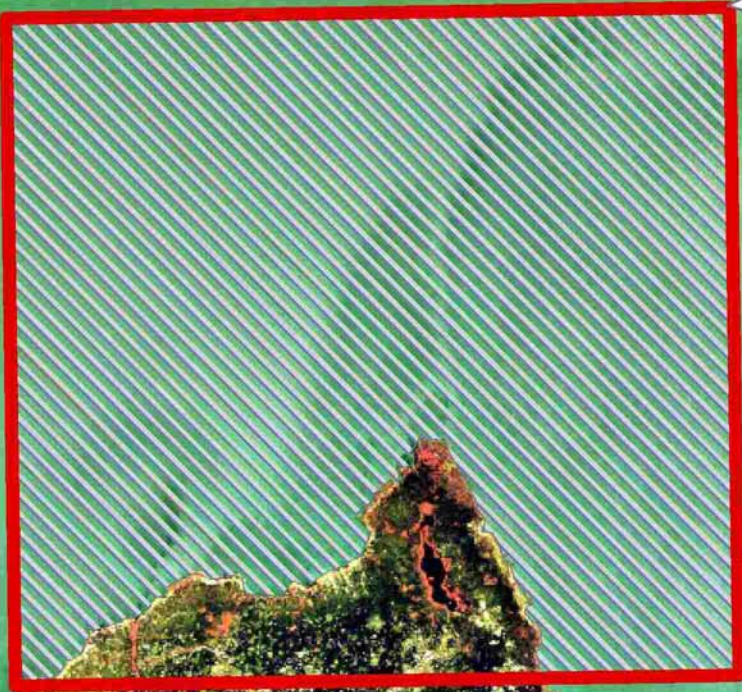
SL 344



P.O.B.
X = 1,549,933.00
Y = 451,682.00

CAMERON PARISH

GRAND LAKE



T13S - R4W