

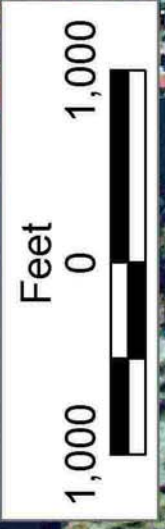
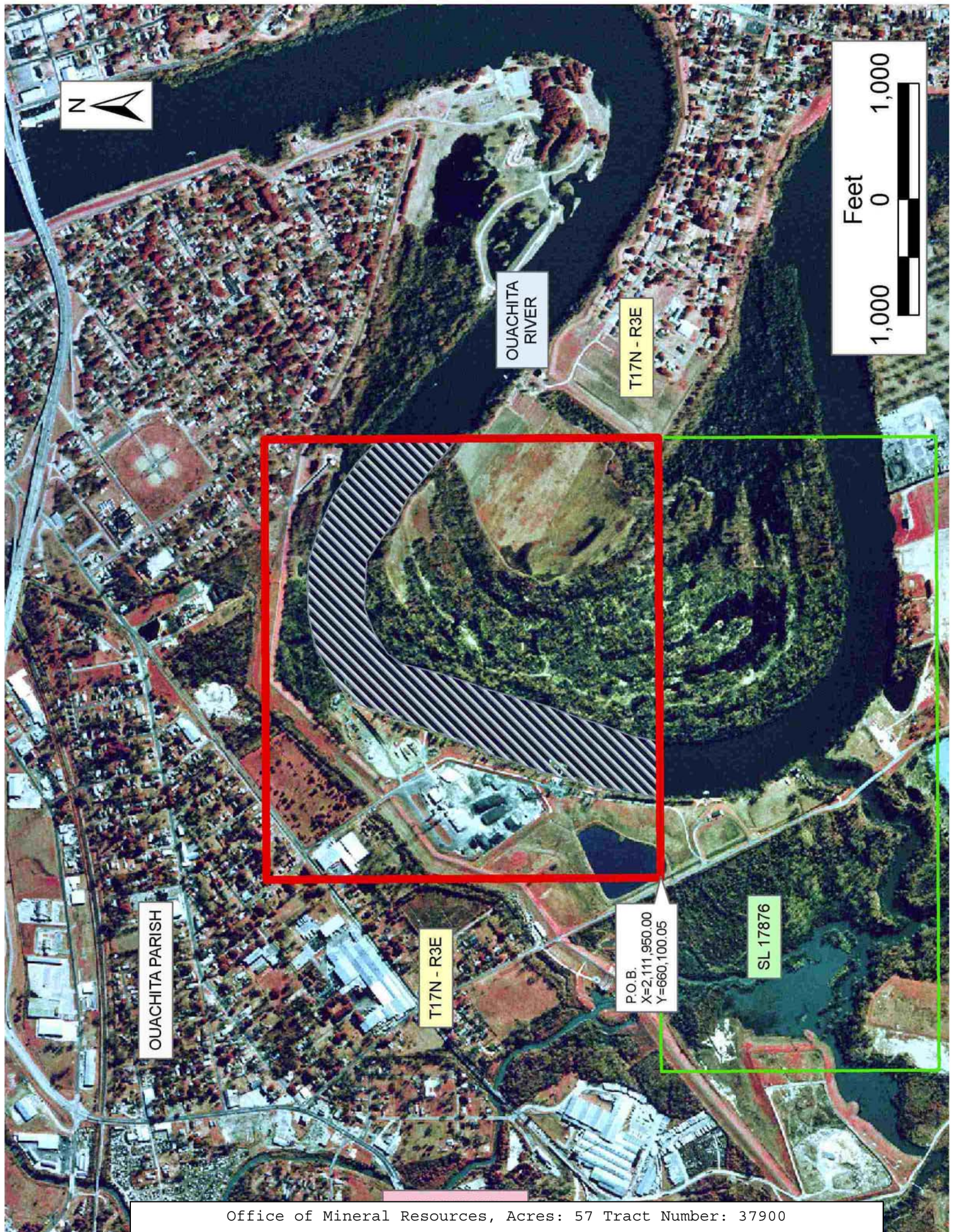
TRACT 37900 - Ouachita Parish, Louisiana

All of the lands now or formerly constituting the beds and bottoms of all water bodies of every nature and description the title of which vests in the State of Louisiana, together with all islands arising therein and other lands formed by accretion or by reliction, where allowed by law, excepting tax adjudicated lands, and not presently under mineral lease on November 9, 2005, situated in Ouachita Parish, Louisiana, and more particularly described as follows: Beginning at a point on the North line of State Lease No. 17876, having Coordinates of X = 2,111,950.00 and Y = 660,100.05; thence North 3,399.95 feet to a point having Coordinates of X = 2,111,950.00 and Y = 663,500.00; thence East 3,800.00 feet to a point having Coordinates of X = 2,115,750.00 and Y = 663,500.00; thence South 00 degrees 00 minutes 01 seconds West 3,399.95 feet to the Northeast corner of said State Lease No. 17876, having Coordinates of X = 2,115,749.98 and Y = 660,100.05; thence West 3,799.98 feet along said North line of said State Lease No. 17876, to the point of beginning, containing approximately **57 acres**, all as more particularly outlined on a plat on file in the Office of Mineral Resources, Department of Natural Resources. All bearings, distances and coordinates are based on Louisiana Coordinate System of 1927, (North or South Zone), where applicable.

NOTE: The above description of the Tract nominated for lease has been provided and corrected, where required, exclusively by the nomination party. Any mineral lease selected from this Tract and awarded by the Louisiana State Mineral Board shall be without warranty of any kind, either express, implied, or statutory, including, but not limited to, the implied warranties of merchantability and fitness for a particular purpose. Should the mineral lease awarded by the Louisiana State Mineral Board be subsequently modified, cancelled or abrogated due to the existence of conflicting leases, operating agreements, private claims or other future obligations or conditions which may affect all or any portion of the leased Tract, it shall not relieve the Lessee of the obligation to pay any bonus due thereon to the Louisiana State Mineral Board, nor shall the Louisiana State Mineral Board be obligated to refund any consideration paid by the Lessor prior to such modification, cancellation, or abrogation, including, but not limited to, bonuses, rentals and royalties.

Applicant: COMSTOCK OIL & GAS - LOUISIANA, LLC

Bidder	Cash Payment	Price/Acre	Rental	Oil	Gas	Other



OUACHITA RIVER

T17N - R3E

OUACHITA PARISH

T17N - R3E

P.O.B.
X=2,111,950.00
Y=660,100.05

SL 17876

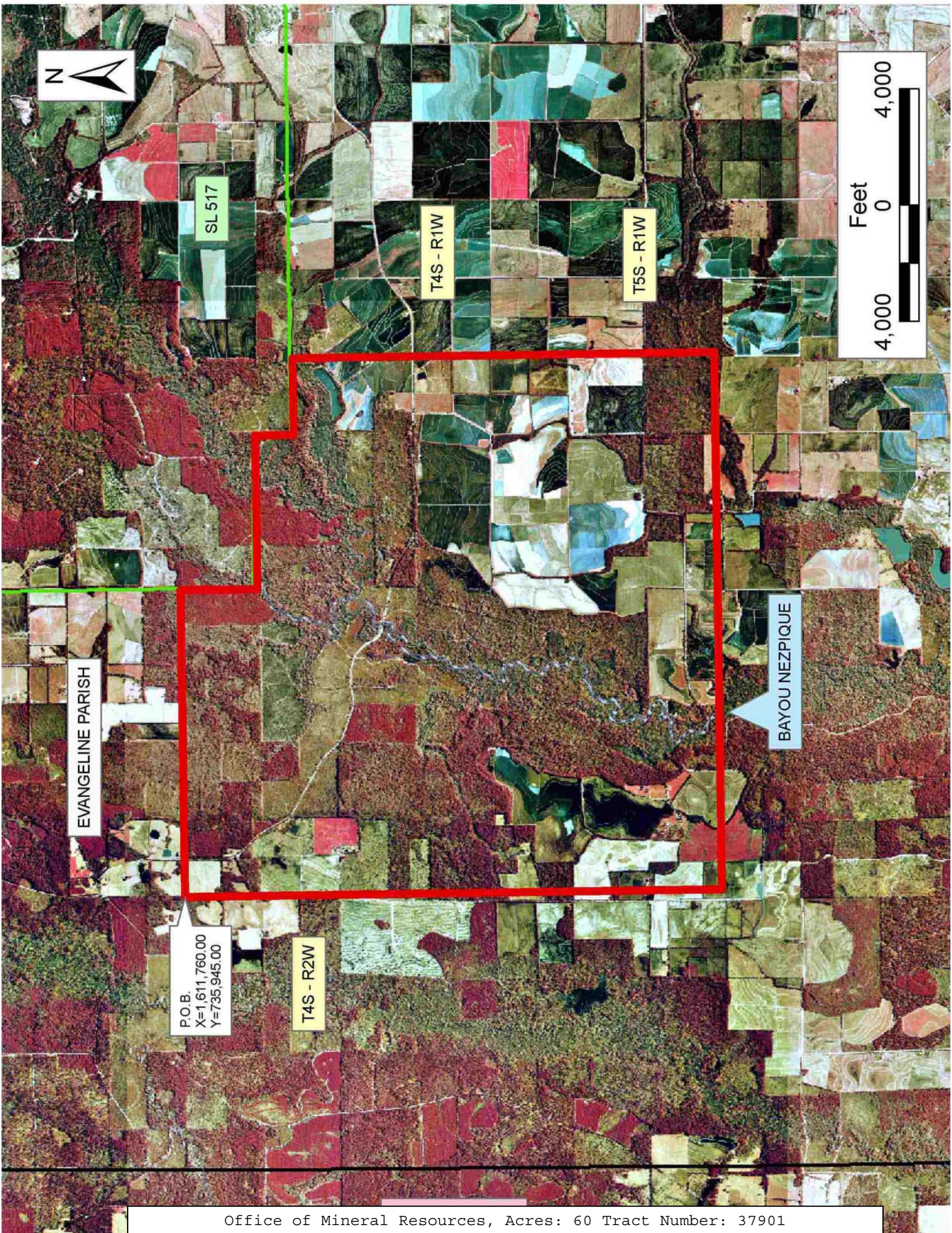
TRACT 37901 - Evangeline Parish, Louisiana

All of the lands now or formerly constituting the beds and bottoms of all water bodies of every nature and description the title of which vests in the State of Louisiana, together with all islands arising therein and other lands formed by accretion or by reliction, where allowed by law, excepting tax adjudicated lands, and not presently under mineral lease on November 9, 2005, situated in Evangeline Parish, Louisiana, and more particularly described as follows: Beginning at a point having Coordinates of X = 1,611,760.00 and Y = 735,945.00; thence East approximately 10,560 feet to a point on the Western boundary of State Lease No. 517, as amended, having a Coordinate of Y = 735,945.00; thence along the boundary of said State Lease No. 517 the following courses: Southerly approximately 2640 feet, Easterly approximately one (1) mile, Southerly approximately one fourth (1/4) mile and Easterly approximately 2,640 feet to a point having a Coordinate of X = 1,630,240.00; thence South approximately 14,520 feet to a point having Coordinates of X = 1,630,240.00 and Y = 717,465.00; thence West 18,480.00 feet to a point having Coordinates of X = 1,611,760.00 and Y = 717,465.00; thence North 18,480.00 feet to the point of beginning, containing approximately **60 acres**, all as more particularly outlined on a plat on file in the Office of Mineral Resources, Department of Natural Resources. All bearings, distances and coordinates are based on Louisiana Coordinate System of 1927, (North or South Zone), where applicable.

NOTE: The above description of the Tract nominated for lease has been provided and corrected, where required, exclusively by the nomination party. Any mineral lease selected from this Tract and awarded by the Louisiana State Mineral Board shall be without warranty of any kind, either express, implied, or statutory, including, but not limited to, the implied warranties of merchantability and fitness for a particular purpose. Should the mineral lease awarded by the Louisiana State Mineral Board be subsequently modified, cancelled or abrogated due to the existence of conflicting leases, operating agreements, private claims or other future obligations or conditions which may affect all or any portion of the leased Tract, it shall not relieve the Lessee of the obligation to pay any bonus due thereon to the Louisiana State Mineral Board, nor shall the Louisiana State Mineral Board be obligated to refund any consideration paid by the Lessor prior to such modification, cancellation, or abrogation, including, but not limited to, bonuses, rentals and royalties.

Applicant: MARIGOLD INTERESTS, L.L.C.

Bidder	Cash Payment	Price/Acre	Rental	Oil	Gas	Other



SL 517

T4S - R1W

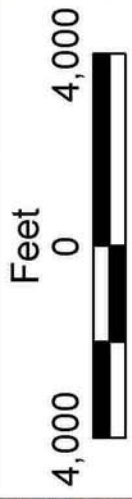
T5S - R1W

EVANGELINE PARISH

BAYOU NEZPIQUE

P.O.B.
X=1,611,760.00
Y=735,945.00

T4S - R2W



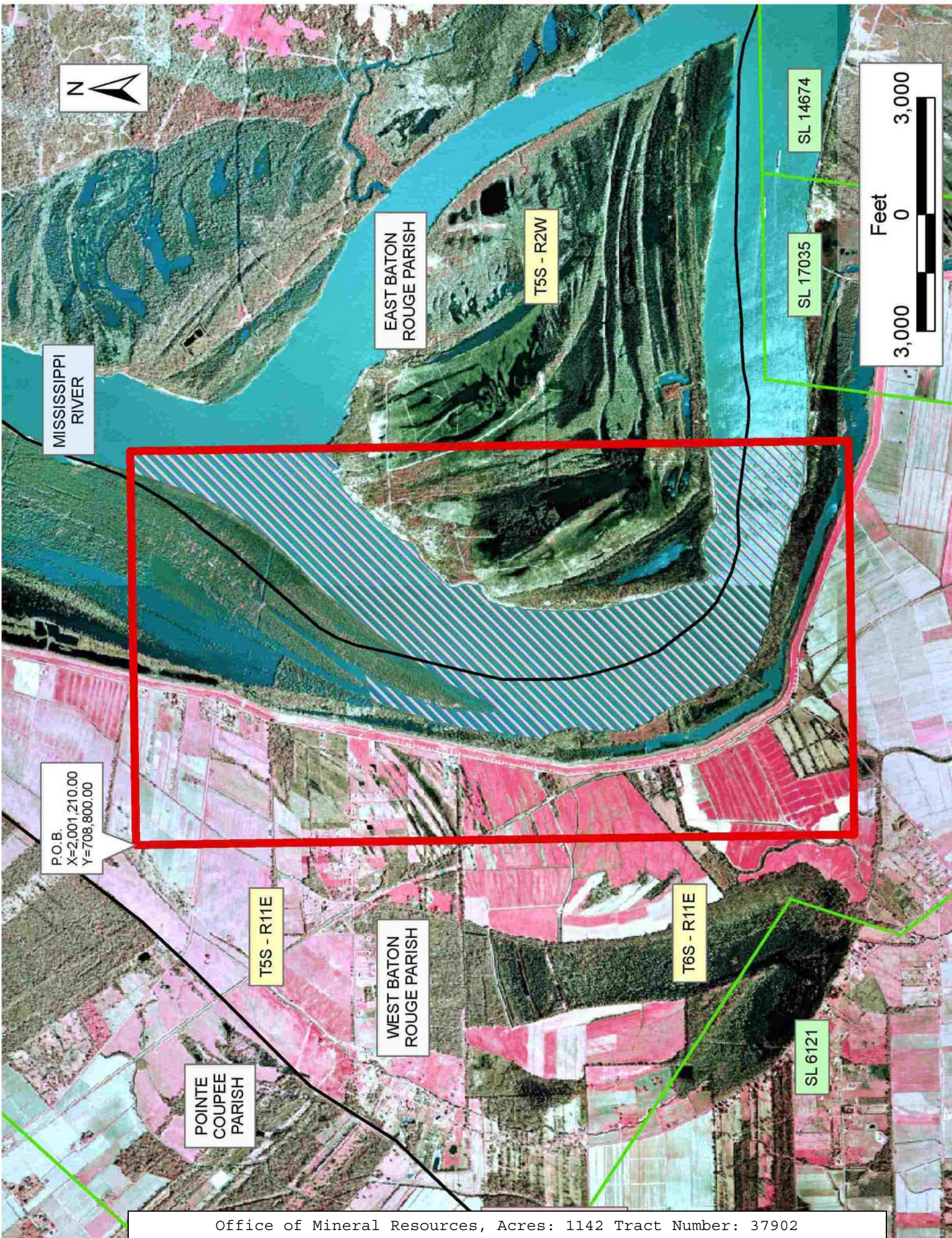
TRACT 37902 - East Baton Rouge and West Baton Rouge Parishes, Louisiana

All of the lands now or formerly constituting the beds and bottoms of all water bodies of every nature and description the title of which vests in the State of Louisiana, together with all islands arising therein and other lands formed by accretion or by reliction, where allowed by law, excepting tax adjudicated lands, and not presently under mineral lease on November 9, 2005, situated in East Baton Rouge and West Baton Rouge Parishes, Louisiana, and more particularly described as follows: Beginning at a point having Coordinates of X = 2,001,210.00 and Y = 708,800.00; thence East 10,121.00 feet to a point having Coordinates of X = 2,011,331.00 and Y = 708,800.00; thence South 18,460.00 feet to a point having Coordinates of X = 2,011,331.00 and Y = 690,340.00; thence West 10,121.00 feet to a point having Coordinates of X = 2,001,210.00 and Y = 690,340.00; thence North 18,460.00 feet to the point of beginning, containing approximately **1,142 acres**, all as more particularly outlined on a plat on file in the Office of Mineral Resources, Department of Natural Resources. All bearings, distances and coordinates are based on Louisiana Coordinate System of 1927, (North or South Zone), where applicable.

NOTE: The above description of the Tract nominated for lease has been provided and corrected, where required, exclusively by the nomination party. Any mineral lease selected from this Tract and awarded by the Louisiana State Mineral Board shall be without warranty of any kind, either express, implied, or statutory, including, but not limited to, the implied warranties of merchantability and fitness for a particular purpose. Should the mineral lease awarded by the Louisiana State Mineral Board be subsequently modified, cancelled or abrogated due to the existence of conflicting leases, operating agreements, private claims or other future obligations or conditions which may affect all or any portion of the leased Tract, it shall not relieve the Lessee of the obligation to pay any bonus due thereon to the Louisiana State Mineral Board, nor shall the Louisiana State Mineral Board be obligated to refund any consideration paid by the Lessor prior to such modification, cancellation, or abrogation, including, but not limited to, bonuses, rentals and royalties.

Applicant: SUNCOAST LAND SERVICES, INC.

Bidder	Cash Payment	Price/Acre	Rental	Oil	Gas	Other



MISSISSIPPI RIVER



EAST BATON ROUGE PARISH

T5S - R2W

SL 14674

SL 17035



P.O.B.
X=2,001,210.00
Y=708,800.00

T5S - R11E

WEST BATON ROUGE PARISH

T6S - R11E

SL 6121

POINTE COUPEE PARISH

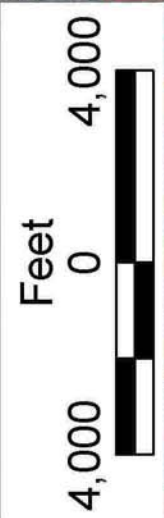
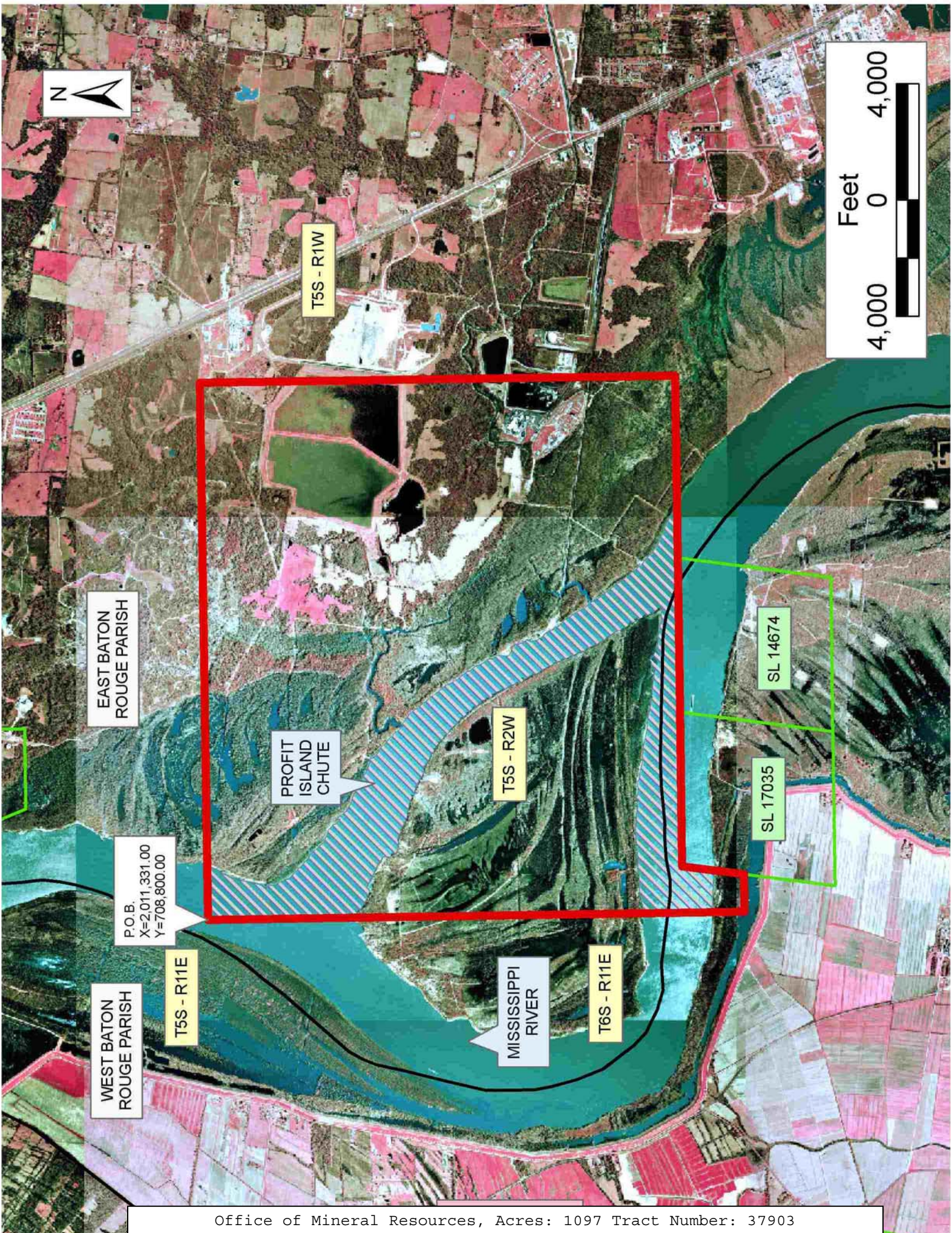
TRACT 37903 - East Baton Rouge and West Baton Rouge Parishes, Louisiana

All of the lands now or formerly constituting the beds and bottoms of all water bodies of every nature and description the title of which vests in the State of Louisiana, together with all islands arising therein and other lands formed by accretion or by reliction, where allowed by law, excepting tax adjudicated lands, and not presently under mineral lease on November 9, 2005, situated in East Baton Rouge and West Baton Rouge Parishes, Louisiana, and more particularly described as follows: Beginning at a point having Coordinates of X = 2,011,331.00 and Y = 708,800.00; thence East 18,480.00 feet to a point having Coordinates of X = 2,029,811.00 and Y = 708,800.00; thence South 16,342.83 feet to a point having Coordinates of X = 2,029,811.00 and Y = 692,457.17; thence West 6,266.00 feet to the Northeast corner of State Lease No. 14674 having Coordinates of X = 2,023,544.99 and Y = 692,457.17; thence West 5,306.64 feet along the North line of said State Lease No. 14674 to its Northwest corner and also the Northeast corner of State Lease No. 17035 having Coordinates of X = 2,018,238.35 and Y = 692,457.17; thence West 5,306.64 feet along the North line of State Lease No. 17035 to its Northwest corner having Coordinates of X = 2,012,931.71 and Y = 692,457.17; thence along the West line of said State Lease No. 17035 South 08 degrees 06 minutes 54 seconds West 2,138.58 feet to a point having Coordinates of X = 2,012,629.83 and Y = 690,340.00; thence West 1,298.83 feet to a point having Coordinates of X = 2,011,331.00 and Y = 690,340.00; thence North 18,460.00 feet to the point of beginning, **LESS AND EXCEPT** any portion of State Lease Nos. 14674 and 17035 which may lie within the above described tract, containing approximately **1,097 acres**, all as more particularly outlined on a plat on file in the Office of Mineral Resources, Department of Natural Resources. All bearings, distances and coordinates are based on Louisiana Coordinate System of 1927, (North or South Zone), where applicable.

NOTE: The above description of the Tract nominated for lease has been provided and corrected, where required, exclusively by the nomination party. Any mineral lease selected from this Tract and awarded by the Louisiana State Mineral Board shall be without warranty of any kind, either express, implied, or statutory, including, but not limited to, the implied warranties of merchantability and fitness for a particular purpose. Should the mineral lease awarded by the Louisiana State Mineral Board be subsequently modified, cancelled or abrogated due to the existence of conflicting leases, operating agreements, private claims or other future obligations or conditions which may affect all or any portion of the leased Tract, it shall not relieve the Lessee of the obligation to pay any bonus due thereon to the Louisiana State Mineral Board, nor shall the Louisiana State Mineral Board be obligated to refund any consideration paid by the Lessor prior to such modification, cancellation, or abrogation, including, but not limited to, bonuses, rentals and royalties.

Applicant: SUNCOAST LAND SERVICES, INC.

Bidder	Cash Payment	Price/Acre	Rental	Oil	Gas	Other



EAST BATON
ROUGE PARISH

P.O.B.
X=2,011,331.00
Y=708,800.00

WEST BATON
ROUGE PARISH

T5S - R11E

PROFIT
ISLAND
CHUTE

T5S - R2W

MISSISSIPPI
RIVER

T6S - R11E

SL 17035

SL 14674

TRACT 37904 - East Baton Rouge and West Baton Rouge Parishes, Louisiana

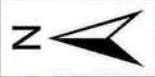
All of the lands now or formerly constituting the beds and bottoms of all water bodies of every nature and description the title of which vests in the State of Louisiana, together with all islands arising therein and other lands formed by accretion or by reliction, where allowed by law, excepting tax adjudicated lands, and not presently under mineral lease on November 9, 2005, situated in East Baton Rouge and West Baton Rouge Parishes, Louisiana, and more particularly described as follows:

Beginning at a point having Coordinates of X = 2,031,560.00 and Y = 692,457.16; thence South 15,705.16 feet to a point having Coordinates of X = 2,031,560.00 and Y = 676,752.00; thence West 18,473.58 feet to a point having Coordinates of X = 2,013,086.41 and Y = 676,752.00; thence North 10,451.67 feet to a point on the South line of State Lease No. 17035 having Coordinates of X = 2,013,086.41 and Y = 687,203.67; thence along the South line of said State Lease No. 17035 East 4,402.85 feet to its Southeast corner having Coordinates of X = 2,017,489.26 and Y = 687,203.67; thence along the East line of said State Lease No. 17035 North 08 degrees 06 minutes 54 seconds East approximately 4,374 feet to a point on the South line of State Lease No. 14674; thence Easterly and Southeasterly along the South line of said State Lease No. 14674 approximately 5,375 feet to its Southeast corner; thence along the East line of said State Lease No. 14674 North 08 degrees 06 minutes 54 seconds East approximately 2,182 feet to a point having Coordinates of X = 2,023,544.79 and Y = 692,457.16; thence East 8,015.20 feet to the point of beginning, **LESS AND EXCEPT** any portion of State Lease Nos. 17035 and 14674 which may lie within the above described tract, containing approximately **1,234 acres**, all as more particularly outlined on a plat on file in the Office of Mineral Resources, Department of Natural Resources. All bearings, distances and coordinates are based on Louisiana Coordinate System of 1927, (North or South Zone), where applicable.

NOTE: The above description of the Tract nominated for lease has been provided and corrected, where required, exclusively by the nomination party. Any mineral lease selected from this Tract and awarded by the Louisiana State Mineral Board shall be without warranty of any kind, either express, implied, or statutory, including, but not limited to, the implied warranties of merchantability and fitness for a particular purpose. Should the mineral lease awarded by the Louisiana State Mineral Board be subsequently modified, cancelled or abrogated due to the existence of conflicting leases, operating agreements, private claims or other future obligations or conditions which may affect all or any portion of the leased Tract, it shall not relieve the Lessee of the obligation to pay any bonus due thereon to the Louisiana State Mineral Board, nor shall the Louisiana State Mineral Board be obligated to refund any consideration paid by the Lessor prior to such modification, cancellation, or abrogation, including, but not limited to, bonuses, rentals and royalties.

Applicant: SUNCOAST LAND SERVICES, INC.

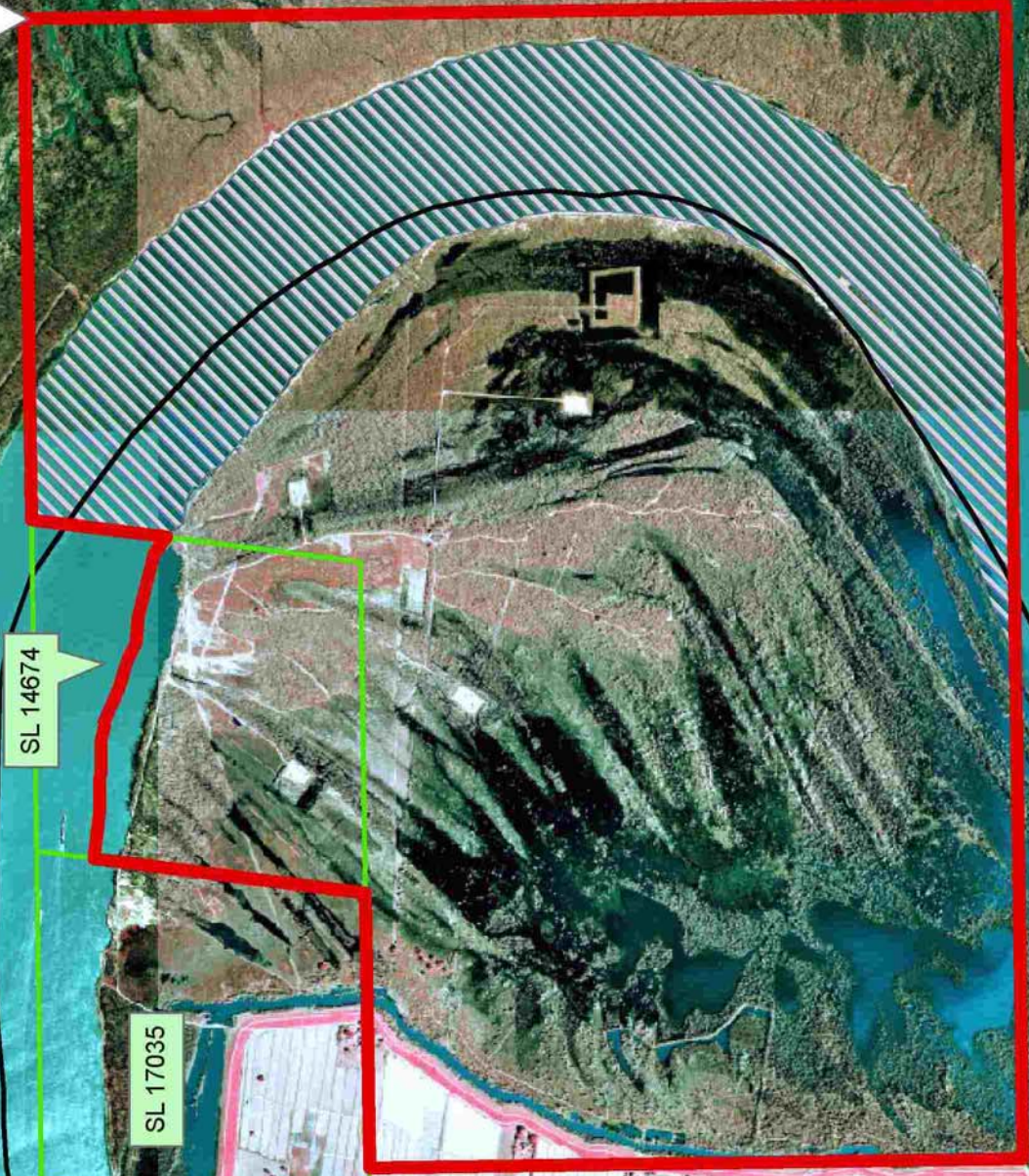
Bidder	Cash Payment	Price/Acre	Rental	Oil	Gas	Other



P.O.B.
X=2,031,560.00
Y=692,457.16

T6S - R1W

EAST BATON
ROUGE PARISH



SL 14674

SL 17035

MISSISSIPPI
RIVER

T6S - R12E

WEST BATON
ROUGE PARISH

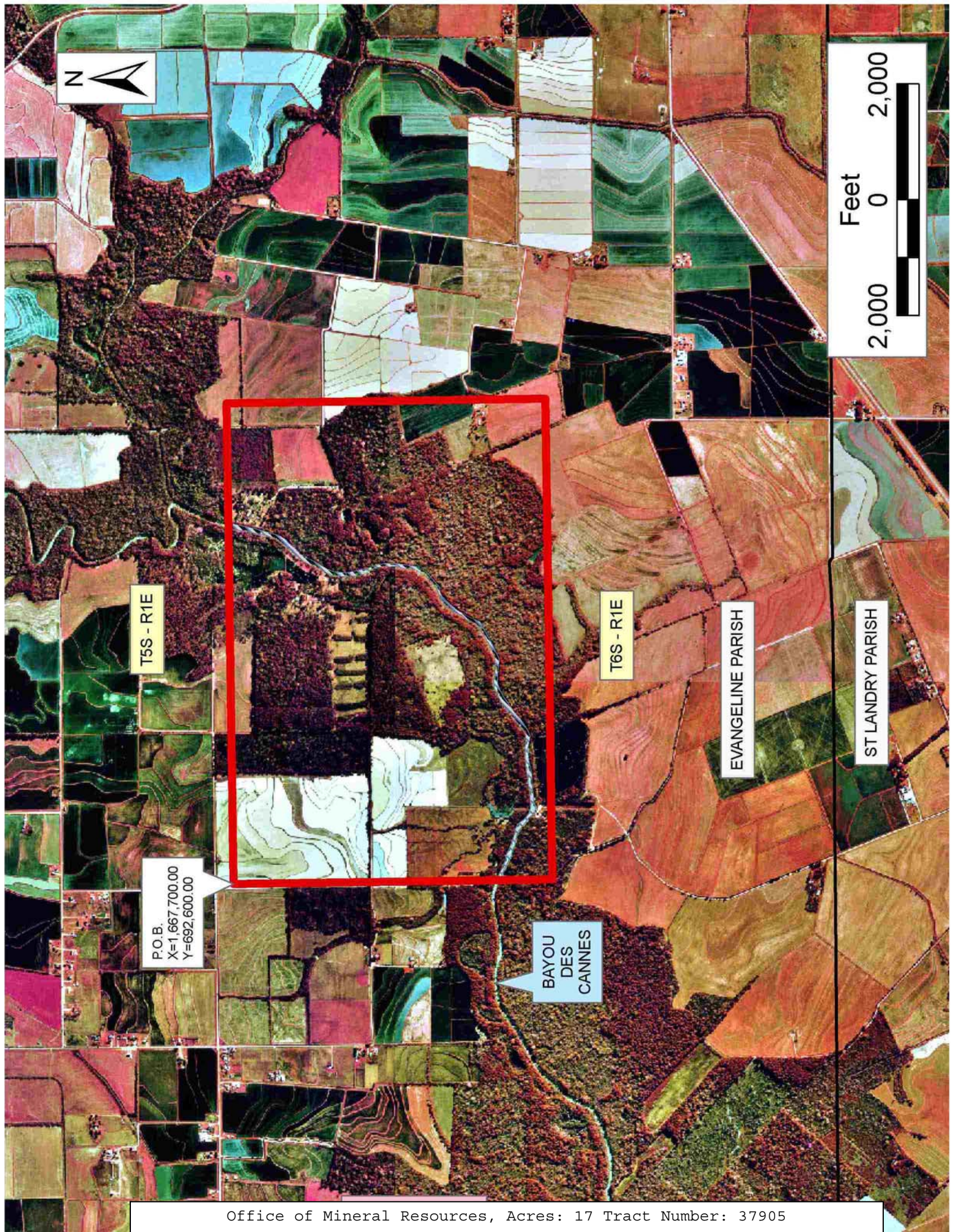
TRACT 37905 - Evangeline Parish, Louisiana

All of the lands now or formerly constituting the beds and bottoms of all water bodies of every nature and description the title of which vests in the State of Louisiana, together with all islands arising therein and other lands formed by accretion or by reliction, where allowed by law, excepting tax adjudicated lands, and not presently under mineral lease on November 9, 2005, situated in Evangeline Parish, Louisiana, and more particularly described as follows: Beginning at a point having Coordinates of X = 1,667,700.00 and Y = 692,600.00; thence East 8,300.00 feet to a point having Coordinates of X = 1,676,000.00 and Y = 692,600.00; thence South 5,500.00 feet to a point having Coordinates of X = 1,676,000.00 and Y = 687,100.00; thence West 8,300.00 feet to a point having Coordinates of X = 1,667,700.00 and Y = 687,100.00; thence North 5,500.00 feet to the Point of Beginning, containing approximately **17 acres**, all as more particularly outlined on a plat on file in the Office of Mineral Resources, Department of Natural Resources. All bearings, distances and coordinates are based on Louisiana Coordinate System of 1927, (North or South Zone), where applicable.

NOTE: The above description of the Tract nominated for lease has been provided and corrected, where required, exclusively by the nomination party. Any mineral lease selected from this Tract and awarded by the Louisiana State Mineral Board shall be without warranty of any kind, either express, implied, or statutory, including, but not limited to, the implied warranties of merchantability and fitness for a particular purpose. Should the mineral lease awarded by the Louisiana State Mineral Board be subsequently modified, cancelled or abrogated due to the existence of conflicting leases, operating agreements, private claims or other future obligations or conditions which may affect all or any portion of the leased Tract, it shall not relieve the Lessee of the obligation to pay any bonus due thereon to the Louisiana State Mineral Board, nor shall the Louisiana State Mineral Board be obligated to refund any consideration paid by the Lessor prior to such modification, cancellation, or abrogation, including, but not limited to, bonuses, rentals and royalties.

Applicant: ZYDECO MINERALS CO.

Bidder	Cash Payment	Price/Acre	Rental	Oil	Gas	Other



T5S - R1E

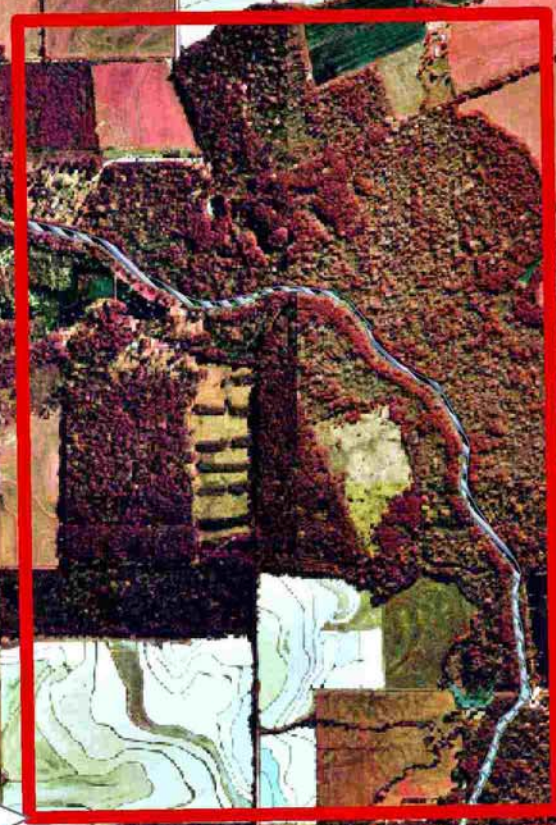
T6S - R1E

EVANGELINE PARISH

ST LANDRY PARISH

P.O.B.
X=1,667,700.00
Y=692,600.00

BAYOU
DES
CANNES



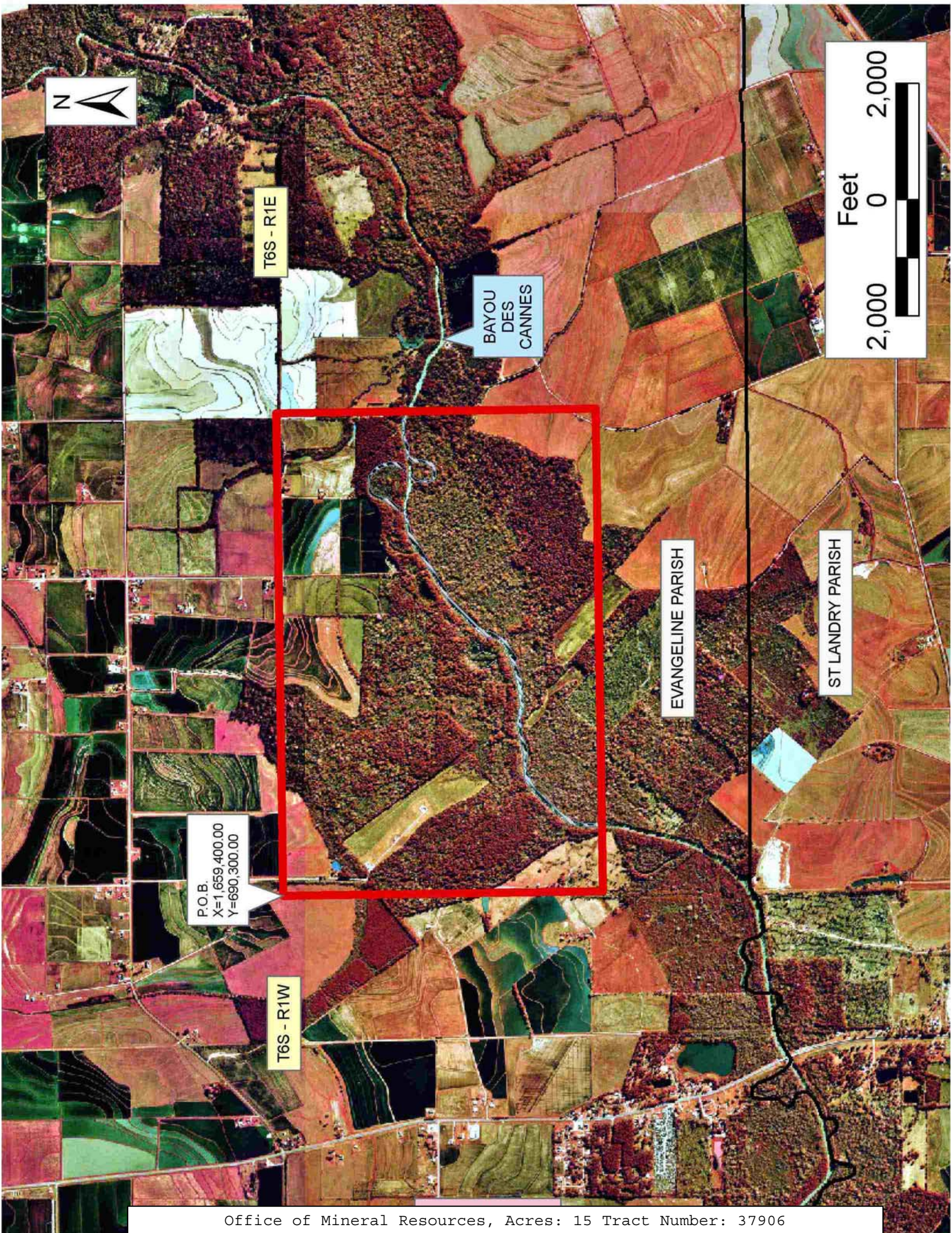
TRACT 37906 - Evangeline Parish, Louisiana

All of the lands now or formerly constituting the beds and bottoms of all water bodies of every nature and description the title of which vests in the State of Louisiana, together with all islands arising therein and other lands formed by accretion or by reliction, where allowed by law, excepting tax adjudicated lands, and not presently under mineral lease on November 9, 2005, situated in Evangeline Parish, Louisiana, and more particularly described as follows: Beginning at a point having Coordinates of X = 1,659,400.00 and Y = 690,300.00; thence East 8,300.00 feet to a point having Coordinates of X = 1,667,700.00 and Y = 690,300.00; thence South 5,500.00 feet to a point having Coordinates of X = 1,667,700.00 and Y = 684,800.00; thence West 8,300.00 feet to a point having Coordinates of X = 1,659,400.00 and Y = 684,800.00; thence North 5,500.00 feet to the Point of Beginning, containing approximately **15 acres**, all as more particularly outlined on a plat on file in the Office of Mineral Resources, Department of Natural Resources. All bearings, distances and coordinates are based on Louisiana Coordinate System of 1927, (North or South Zone), where applicable.

NOTE: The above description of the Tract nominated for lease has been provided and corrected, where required, exclusively by the nomination party. Any mineral lease selected from this Tract and awarded by the Louisiana State Mineral Board shall be without warranty of any kind, either express, implied, or statutory, including, but not limited to, the implied warranties of merchantability and fitness for a particular purpose. Should the mineral lease awarded by the Louisiana State Mineral Board be subsequently modified, cancelled or abrogated due to the existence of conflicting leases, operating agreements, private claims or other future obligations or conditions which may affect all or any portion of the leased Tract, it shall not relieve the Lessee of the obligation to pay any bonus due thereon to the Louisiana State Mineral Board, nor shall the Louisiana State Mineral Board be obligated to refund any consideration paid by the Lessor prior to such modification, cancellation, or abrogation, including, but not limited to, bonuses, rentals and royalties.

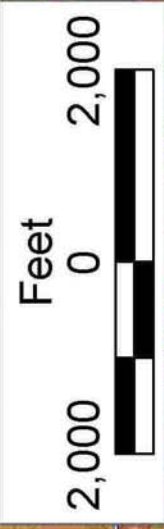
Applicant: ZYDECO MINERALS CO.

Bidder	Cash Payment	Price/Acre	Rental	Oil	Gas	Other



T6S - R1E

BAYOU
DES
CANNES



EVANGELINE PARISH

ST LANDRY PARISH

P.O.B
X=1,659,400.00
Y=690,300.00

T6S - R1W

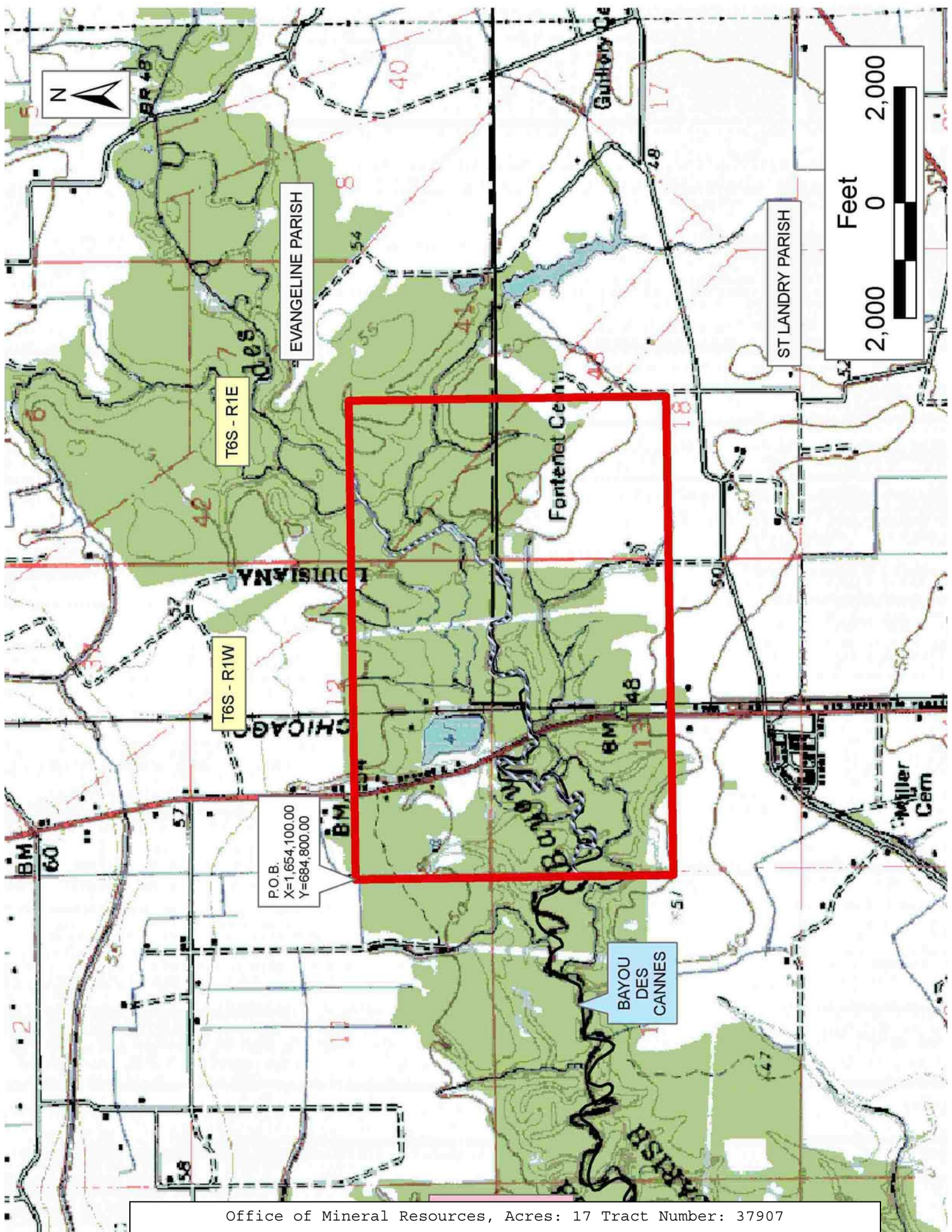
TRACT 37907 - Evangeline and St. Landry Parishes, Louisiana

All of the lands now or formerly constituting the beds and bottoms of all water bodies of every nature and description the title of which vests in the State of Louisiana, together with all islands arising therein and other lands formed by accretion or by reliction, where allowed by law, excepting tax adjudicated lands, and not presently under mineral lease on November 9, 2005, situated in Evangeline and St. Landry Parishes, Louisiana, and more particularly described as follows: Beginning at a point having Coordinates of X = 1,654,100.00 and Y = 684,800.00; thence East 8,300.00 feet to a point having Coordinates of X = 1,662,400.00 and Y = 684,800.00; thence South 5,500.00 feet to a point having Coordinates of X = 1,662,400.00 and Y = 679,300.00; thence West 8,300.00 feet to a point having Coordinates of X = 1,654,100.00 and Y = 679,300.00; thence North 5,500.00 feet to the Point of Beginning, containing approximately **17 acres**, all as more particularly outlined on a plat on file in the Office of Mineral Resources, Department of Natural Resources. All bearings, distances and coordinates are based on Louisiana Coordinate System of 1927, (North or South Zone), where applicable.

NOTE: The above description of the Tract nominated for lease has been provided and corrected, where required, exclusively by the nomination party. Any mineral lease selected from this Tract and awarded by the Louisiana State Mineral Board shall be without warranty of any kind, either express, implied, or statutory, including, but not limited to, the implied warranties of merchantability and fitness for a particular purpose. Should the mineral lease awarded by the Louisiana State Mineral Board be subsequently modified, cancelled or abrogated due to the existence of conflicting leases, operating agreements, private claims or other future obligations or conditions which may affect all or any portion of the leased Tract, it shall not relieve the Lessee of the obligation to pay any bonus due thereon to the Louisiana State Mineral Board, nor shall the Louisiana State Mineral Board be obligated to refund any consideration paid by the Lessor prior to such modification, cancellation, or abrogation, including, but not limited to, bonuses, rentals and royalties.

Applicant: ZYDECO MINERALS CO.

Bidder	Cash Payment	Price/Acre	Rental	Oil	Gas	Other



T6S - R1E

T6S - R1W

P.O.B.
X=1,654,100.00
Y=684,800.00

EVANGELINE PARISH

ST LANDRY PARISH

Fontenot Cem

BAYOU
DES
CANNES

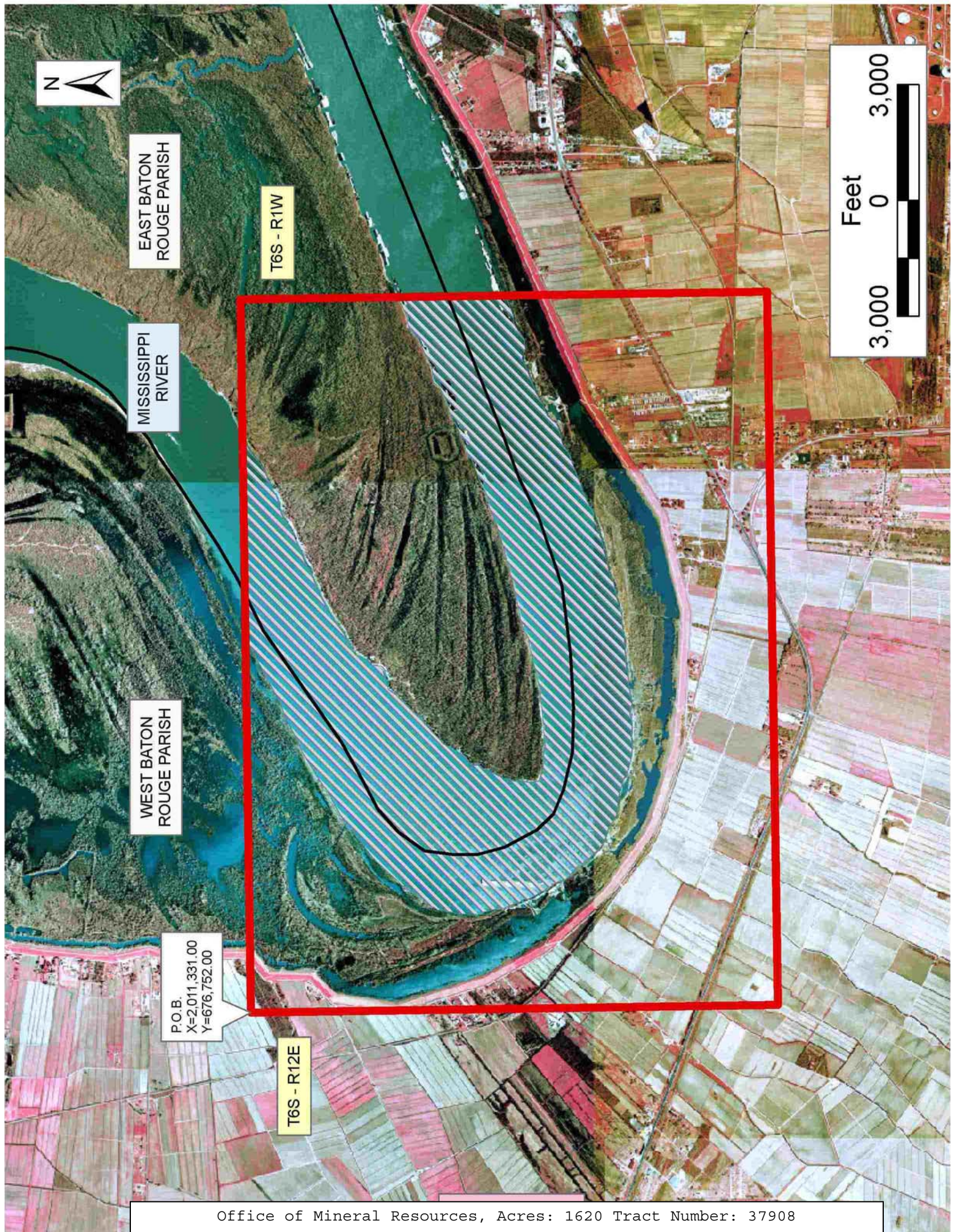
TRACT 37908 - East Baton Rouge and West Baton Rouge Parishes, Louisiana

All of the lands now or formerly constituting the beds and bottoms of all water bodies of every nature and description the title of which vests in the State of Louisiana, together with all islands arising therein and other lands formed by accretion or by reliction, where allowed by law, excepting tax adjudicated lands, and not presently under mineral lease on November 9, 2005, situated in East Baton Rouge and West Baton Rouge Parishes, Louisiana, and more particularly described as follows: Beginning at a point having Coordinates of X = 2,011,331.00 and Y = 676,752.00; thence East 18,480.00 feet to a point having Coordinates of X = 2,029,811.00 and Y = 676,752.00; thence South 13,637.12 feet to a point having Coordinates of X = 2,029,811.00 and Y = 663,114.88; thence West 18,480.00 feet to a point having Coordinates of X = 2,011,331.00 and Y = 663,114.88; thence North 13,637.12 feet to the point of beginning, containing approximately **1,620 acres**, all as more particularly outlined on a plat on file in the Office of Mineral Resources, Department of Natural Resources. All bearings, distances and coordinates are based on Louisiana Coordinate System of 1927, (North or South Zone), where applicable.

NOTE: The above description of the Tract nominated for lease has been provided and corrected, where required, exclusively by the nomination party. Any mineral lease selected from this Tract and awarded by the Louisiana State Mineral Board shall be without warranty of any kind, either express, implied, or statutory, including, but not limited to, the implied warranties of merchantability and fitness for a particular purpose. Should the mineral lease awarded by the Louisiana State Mineral Board be subsequently modified, cancelled or abrogated due to the existence of conflicting leases, operating agreements, private claims or other future obligations or conditions which may affect all or any portion of the leased Tract, it shall not relieve the Lessee of the obligation to pay any bonus due thereon to the Louisiana State Mineral Board, nor shall the Louisiana State Mineral Board be obligated to refund any consideration paid by the Lessor prior to such modification, cancellation, or abrogation, including, but not limited to, bonuses, rentals and royalties.

Applicant: SUNCOAST LAND SERVICES, INC.

Bidder	Cash Payment	Price/Acre	Rental	Oil	Gas	Other



EAST BATON
ROUGE PARISH

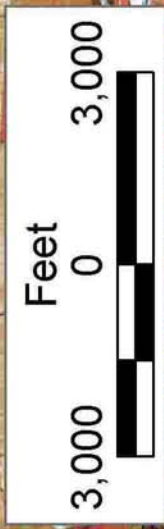
T6S - R11W

MISSISSIPPI
RIVER

WEST BATON
ROUGE PARISH

P.O.B.
X=2,011,331.00
Y=676,752.00

T6S - R12E



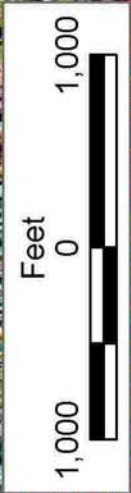
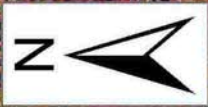
TRACT 37909 - Acadia Parish, Louisiana

All of the lands now or formerly constituting the beds and bottoms of all water bodies of every nature and description the title of which vests in the State of Louisiana, together with all islands arising therein and other lands formed by accretion or by reliction, where allowed by law, excepting tax adjudicated lands, and not presently under mineral lease on November 9, 2005, situated in Acadia Parish, Louisiana, and more particularly described as follows: Beginning at a point having Coordinates of X = 1,615,903.40 and Y = 621,545.57; thence East 3,441.54 feet to a point having Coordinates of X = 1,619,344.94 and Y = 621,545.57; thence South 3,840.52 feet to a point having Coordinates of X = 1,619,344.94 and Y = 617,705.06; thence West 3,441.54 feet to a point having Coordinates of X = 1,615,903.40 and Y = 617,705.06; thence North 3,840.52 feet to the point of beginning, containing approximately **9.46 acres**, all as more particularly outlined on a plat on file in the Office of Mineral Resources, Department of Natural Resources. All bearings, distances and coordinates are based on Louisiana Coordinate System of 1927, (North or South Zone), where applicable.

NOTE: The above description of the Tract nominated for lease has been provided and corrected, where required, exclusively by the nomination party. Any mineral lease selected from this Tract and awarded by the Louisiana State Mineral Board shall be without warranty of any kind, either express, implied, or statutory, including, but not limited to, the implied warranties of merchantability and fitness for a particular purpose. Should the mineral lease awarded by the Louisiana State Mineral Board be subsequently modified, cancelled or abrogated due to the existence of conflicting leases, operating agreements, private claims or other future obligations or conditions which may affect all or any portion of the leased Tract, it shall not relieve the Lessee of the obligation to pay any bonus due thereon to the Louisiana State Mineral Board, nor shall the Louisiana State Mineral Board be obligated to refund any consideration paid by the Lessor prior to such modification, cancellation, or abrogation, including, but not limited to, bonuses, rentals and royalties.

Applicant: PATRICK L. DONOHUE PETROLEUM PROPERTIES, INC.

Bidder	Cash Payment	Price/Acre	Rental	Oil	Gas	Other



ACADIA PARISH

T8S - R2W

BAYOU
DES CANNES



P.O.B.
X = 1,615,903.40
Y = 621,545.57