

**TRACT 37944 - Calcasieu Parish, Louisiana**

A portion of all lands, including the beds and bottoms of all navigable and non-navigable waters within the geographical boundaries of that part of the Sabine Island Wildlife Management Area originally leased from the State of Louisiana by Act dated July 31, 1968 and renewed July 31, 1993 to be effective until July 31, 2018 and recorded in the Conveyance Records of Calcasieu parish, Louisiana, and not under mineral lease to the State as of November 9, 2005, more particularly set forth as follows: Beginning at a point having Coordinates of X = 1,261,572.00 and Y = 572,333.00; thence West 9,868.59 to a point on the East line of State Lease No. 15726, as amended, having Coordinates of X = 1,251,703.41 and Y = 572,333.00; thence North 217.00 feet on the East line of said State Lease No. 15726 to its Northeast corner and the Southeast corner of State Lease No. 15202, as amended, having Coordinates of X = 1,251,703.41 and Y = 572,550.00; thence along the boundary of said State Lease No. 15202 the following courses: North 1,349.80 feet and West 703.41 feet to its Northwest corner and the Northeast corner of State Lease No. 15155, as amended, having Coordinates of X = 1,251,000.00 and Y = 573,899.80; thence along the boundary of said State Lease No. 15155 the following courses: West approximately 2,065 feet and Southwesterly to the point of intersection with an East West line having a Coordinate of Y = 572,333.00; thence West approximately 3,654 feet to a point having Coordinates of X = 1,245,153.00 and Y = 572,333.00; thence North 8,000.00 feet to a point having Coordinates of X = 1,245,153.00 and Y = 580,333.00; thence East 16,419.00 feet to a point having Coordinates of X = 1,261,572.00 and Y = 580,333.00; thence South 8,000.00 feet to the point of beginning, **LESS AND EXCEPT** any portion of the above described tract that lies outside the Sabine Island Wildlife Management Area, containing approximately **1,375 acres**, all as more particularly outlined on a plat on file in the Office of Mineral Resources, Department of Natural Resources. All bearings, distances and coordinates are based on Louisiana Coordinate System of 1927, (South Zone).

NOTE: The Department of Wildlife and Fisheries has mandated that any activity associated with a mineral lease on the above described property be subject to and in accordance with, but not necessarily limited to, the following:

1. No activities will be allowed without written authorization of the Louisiana Department of Wildlife and Fisheries. All projects will be coordinated and approved by the Sabine WMA Supervisor prior to any activities on the Wildlife Management Area.
2. Proposed projects will be evaluated on a case by case basis. Modification to proposed project features including but not limited to access routes, spoil placement, well sites, flowlines and appurtenant structures may be required by the Louisiana Department of Wildlife and Fisheries.
3. Compliance with the Sabine WMA regulations will be required unless otherwise specified by the Department.

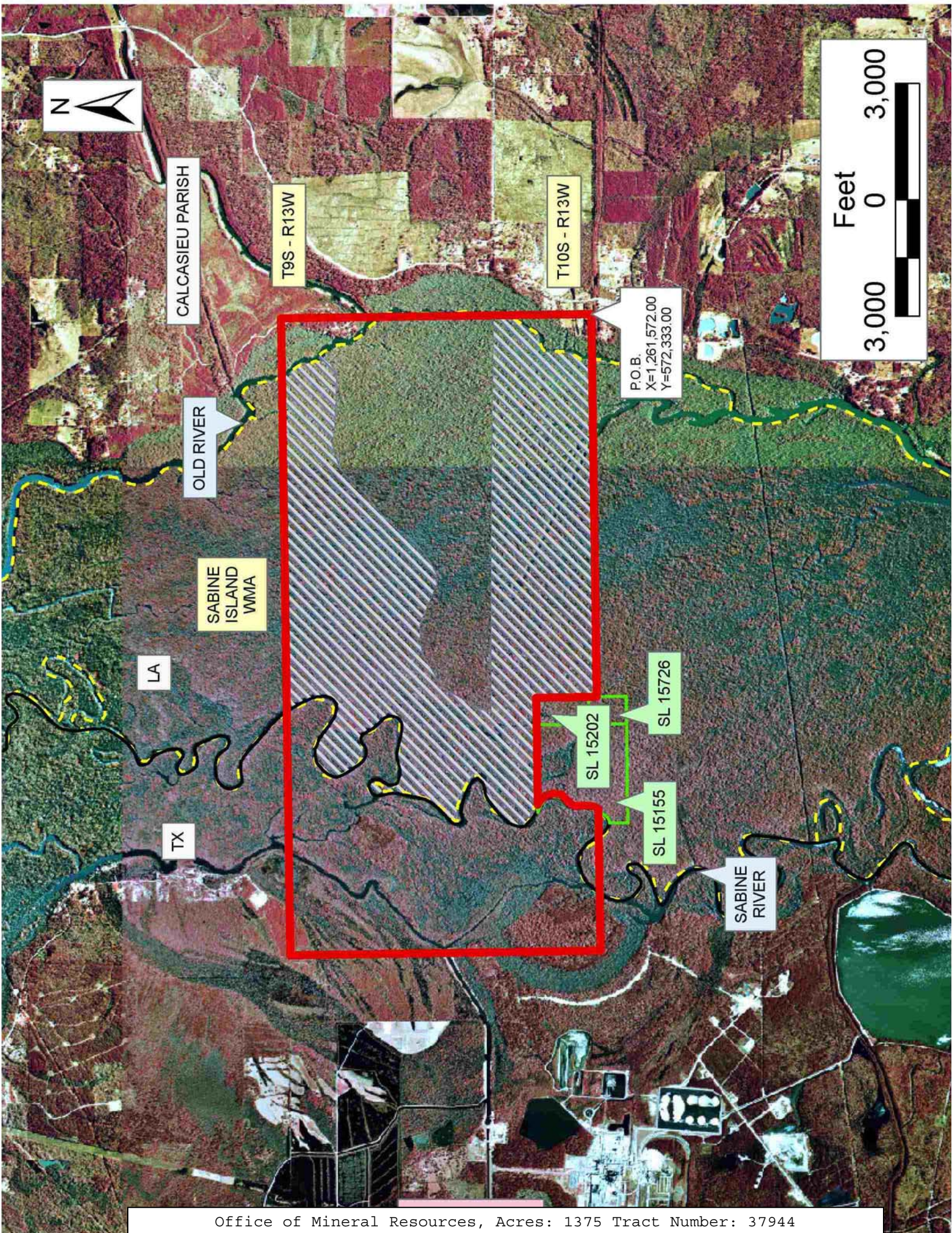
4. Compensatory mitigation will be required to offset unavoidable wetlands impacts.
5. Removal of all structures, facilities and equipment will be required within 120 days of abandonment unless otherwise agreed to in writing by the Louisiana Department of Wildlife and Fisheries.
6. No activities will be allowed during the hunting season unless authorized by the Department.
7. Prior to submitting applications for wetland permits to Federal and State permitting agencies, the leaseholder shall coordinate project details with the Louisiana Department of Wildlife and Fisheries. Contact person for the Department will be Mike Windham at (504) 568-5886.

NOTE: The above description of the Tract nominated for lease has been provided and corrected, where required, exclusively by the nomination party. Any mineral lease selected from this Tract and awarded by the Louisiana State Mineral Board shall be without warranty of any kind, either express, implied, or statutory, including, but not limited to, the implied warranties of merchantability and fitness for a particular purpose. Should the mineral lease awarded by the Louisiana State Mineral Board be subsequently modified, cancelled or abrogated due to the existence of conflicting leases, operating agreements, private claims or other future obligations or conditions which may affect all or any portion of the leased Tract, it shall not relieve the Lessee of the obligation to pay any bonus due thereon to the Louisiana State Mineral Board, nor shall the Louisiana State Mineral Board be obligated to refund any consideration paid by the Lessor prior to such modification, cancellation, or abrogation, including, but not limited to, bonuses, rentals and royalties.

Applicant: FRANZ P. SCHOEFFLER

Bidder	Cash Payment	Price/Acre	Rental	Oil	Gas	Other





CALCASIEU PARISH

T9S - R13W

T10S - R13W

P.O.B.  
X=1,261,572.00  
Y=572,333.00

OLD RIVER

SABINE ISLAND WMA

LA

TX

SL 15202

SL 15155

SL 15726

SABINE RIVER





**TRACT 37945 - Calcasieu Parish, Louisiana**

A portion of all lands, including the beds and bottoms of all navigable and non-navigable waters within the geographical boundaries of that part of the Sabine Island Wildlife Management Area originally leased from the State of Louisiana by Act dated July 31, 1968 and renewed July 31, 1993 to be effective until July 31, 2018 and recorded in the Conveyance Records of Calcasieu parish, Louisiana, and not under mineral lease to the State as of November 9, 2005, more particularly set forth as follows: Beginning at a point having Coordinates of X = 1,261,572.00 and Y = 572,333.00; thence South 7,802.00 feet to a point having Coordinates of X = 1,261,572.00 and Y = 564,531.00; thence West 16,419.00 feet to a point having Coordinates of X = 1,245,153.00 and Y = 564,531.00; thence North 7,802.00 to a point having Coordinates of X = 1,245,153.00 and Y = 572,333.00; thence East approximately 3,654 feet to a point on the boundary of State Lease No. 15155 as amended, having a Coordinate of Y = 572,333.00; thence Southwesterly and Southerly on the boundary of said State Lease No. 15155 to its Southwest corner having Coordinates of X = 1,248,319.91 and Y = 571,579.80; thence East 2,680.09 feet on the South line of said State Lease No. 15155 to its Southeast corner and the Southwest corner of State Lease No. 15726, as amended having Coordinates of X = 1,251,000.00 and Y = 571,579.80; thence along the boundary of said State Lease No. 15726 the following courses: East 703.41 feet and North 753.20 feet to a point having Coordinates of X = 1,251,703.41 and Y = 572,333.00; thence East 9,868.59 feet to the point of beginning, **LESS AND EXCEPT** any portion of the above described tract that lies outside the Sabine Island Wildlife Management Area, containing approximately **2,122 acres**, all as more particularly outlined on a plat on file in the Office of Mineral Resources, Department of Natural Resources. All bearings, distances and coordinates are based on Louisiana Coordinate System of 1927, (South Zone).

NOTE: The Department of Wildlife and Fisheries has mandated that any activity associated with a mineral lease on the above described property be subject to and in accordance with, but not necessarily limited to, the following:

1. No activities will be allowed without written authorization of the Louisiana Department of Wildlife and Fisheries. All projects will be coordinated and approved by the Sabine WMA Supervisor prior to any activities on the Wildlife Management Area.
2. Proposed projects will be evaluated on a case by case basis. Modification to proposed project features including but not limited to access routes, spoil placement, well sites, flowlines and appurtenant structures may be required by the Louisiana Department of Wildlife and Fisheries.
3. Compliance with the Sabine WMA regulations will be required unless otherwise specified by the Department.
4. Compensatory mitigation will be required to offset unavoidable wetlands impacts.

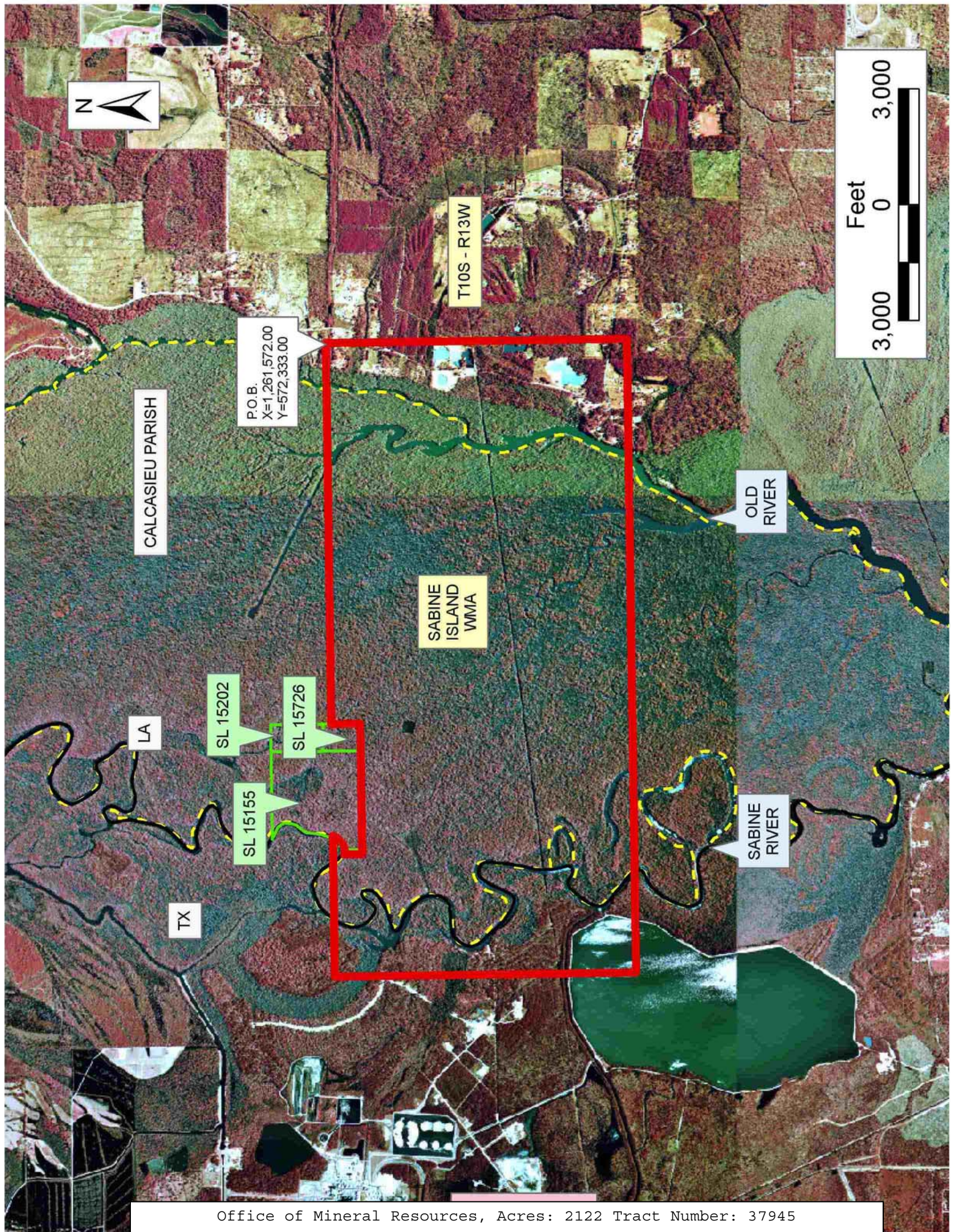
5. Removal of all structures, facilities and equipment will be required within 120 days of abandonment unless otherwise agreed to in writing by the Louisiana Department of Wildlife and Fisheries.
6. No activities will be allowed during the hunting season unless authorized by the Department.
7. Prior to submitting applications for wetland permits to Federal and State permitting agencies, the leaseholder shall coordinate project details with the Louisiana Department of Wildlife and Fisheries. Contact person for the Department will be Mike Windham at (504) 568-5886.

NOTE: The above description of the Tract nominated for lease has been provided and corrected, where required, exclusively by the nomination party. Any mineral lease selected from this Tract and awarded by the Louisiana State Mineral Board shall be without warranty of any kind, either express, implied, or statutory, including, but not limited to, the implied warranties of merchantability and fitness for a particular purpose. Should the mineral lease awarded by the Louisiana State Mineral Board be subsequently modified, cancelled or abrogated due to the existence of conflicting leases, operating agreements, private claims or other future obligations or conditions which may affect all or any portion of the leased Tract, it shall not relieve the Lessee of the obligation to pay any bonus due thereon to the Louisiana State Mineral Board, nor shall the Louisiana State Mineral Board be obligated to refund any consideration paid by the Lessor prior to such modification, cancellation, or abrogation, including, but not limited to, bonuses, rentals and royalties.

Applicant: FRANZ P. SCHOEFFLER

Bidder	Cash Payment	Price/Acre	Rental	Oil	Gas	Other





CALCASIEU PARISH

P.O.B.  
X=1,261,572.00  
Y=572,333.00

SABINE ISLAND WMA

T10S - R13W

OLD RIVER

SABINE RIVER

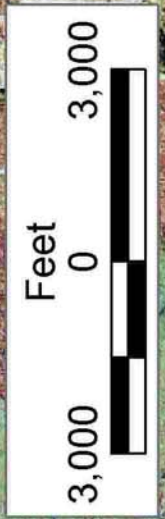
LA

SL 15202

SL 15726

SL 15155

TX





**TRACT 37946 - Calcasieu Parish, Louisiana**

A portion of all lands, including the beds and bottoms of all navigable and non-navigable waters within the geographical boundaries of that part of the Sabine Island Wildlife Management Area originally leased from the State of Louisiana by Act dated July 31, 1968 and renewed July 31, 1993 to be effective until July 31, 2018 and recorded in the Conveyance Records of Calcasieu parish, Louisiana, and not under mineral lease to the State as of November 9, 2005, more particularly set forth as follows: Beginning at a point having Coordinates of X = 1,261,572.00 and Y = 554,960.00; thence West 16,419.00 feet to a point having Coordinates of X = 1,245,153.00 and Y = 554,960.00; thence North 9,571.00 feet to a point having Coordinates of X = 1,245,153.00 and Y = 564,531.00; thence East 16,419.00 feet to a point having Coordinates of X = 1,261,572.00 and Y = 564,531.00; thence South 9,571.00 feet to the point of beginning, **LESS AND EXCEPT** any portion of the above described tract that lies outside the Sabine Island Wildlife Management Area, and **LESS AND EXCEPT** all of Section 16, Township 10 South, Range 13 West, containing approximately **879 acres**, all as more particularly outlined on a plat on file in the Office of Mineral Resources, Department of Natural Resources. All bearings, distances and coordinates are based on Louisiana Coordinate System of 1927, (South Zone).

NOTE: The Department of Wildlife and Fisheries has mandated that any activity associated with a mineral lease on the above described property be subject to and in accordance with, but not necessarily limited to, the following:

1. No activities will be allowed without written authorization of the Louisiana Department of Wildlife and Fisheries. All projects will be coordinated and approved by the Sabine WMA Supervisor prior to any activities on the Wildlife Management Area.
2. Proposed projects will be evaluated on a case by case basis. Modification to proposed project features including but not limited to access routes, spoil placement, well sites, flowlines and appurtenant structures may be required by the Louisiana Department of Wildlife and Fisheries.
3. Compliance with the Sabine WMA regulations will be required unless otherwise specified by the Department.
4. Compensatory mitigation will be required to offset unavoidable wetlands impacts.
5. Removal of all structures, facilities and equipment will be required within 120 days of abandonment unless otherwise agreed to in writing by the Louisiana Department of Wildlife and Fisheries.
6. No activities will be allowed during the hunting season unless authorized by the Department.
7. Prior to submitting applications for wetland permits to Federal and State permitting agencies, the leaseholder shall coordinate project details with the Louisiana Department of Wildlife and Fisheries.

Contact person for the Department will be Mike Windham at (504) 568-5886.

NOTE: The above description of the Tract nominated for lease has been provided and corrected, where required, exclusively by the nomination party. Any mineral lease selected from this Tract and awarded by the Louisiana State Mineral Board shall be without warranty of any kind, either express, implied, or statutory, including, but not limited to, the implied warranties of merchantability and fitness for a particular purpose. Should the mineral lease awarded by the Louisiana State Mineral Board be subsequently modified, cancelled or abrogated due to the existence of conflicting leases, operating agreements, private claims or other future obligations or conditions which may affect all or any portion of the leased Tract, it shall not relieve the Lessee of the obligation to pay any bonus due thereon to the Louisiana State Mineral Board, nor shall the Louisiana State Mineral Board be obligated to refund any consideration paid by the Lessor prior to such modification, cancellation, or abrogation, including, but not limited to, bonuses, rentals and royalties.

Applicant: FRANZ P. SCHOEFFLER

Bidder	Cash Payment	Price/Acre	Rental	Oil	Gas	Other





CALCASIEU PARISH

T10S - R13W

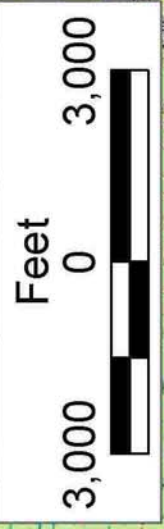
OLD RIVER

SABINE ISLAND WMA

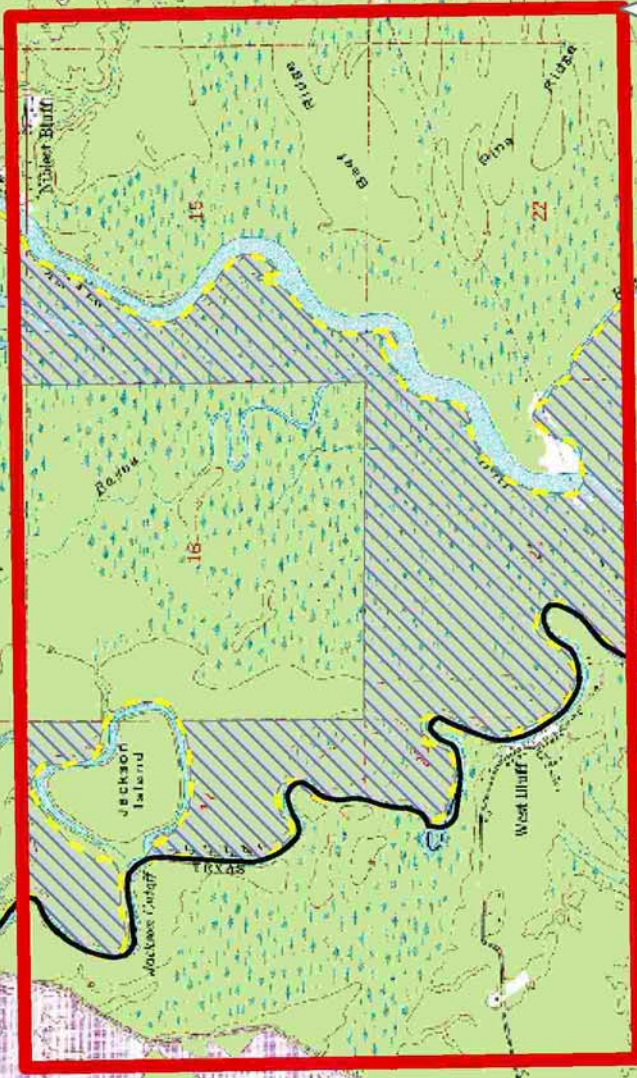
LA

TX

P.O.B.  
X=1,261,572.00  
Y=554,960.00



SABINE RIVER





**TRACT 37947 - Calcasieu Parish, Louisiana**

A portion of all lands, including the beds and bottoms of all navigable and non-navigable waters within the geographical boundaries of that part of the Sabine Island Wildlife Management Area originally leased from the State of Louisiana by Act dated July 31, 1968 and renewed July 31, 1993 to be effective until July 31, 2018 and recorded in the Conveyance Records of Calcasieu parish, Louisiana, and not under mineral lease to the State as of November 9, 2005, more particularly set forth as follows: Beginning at a point having Coordinates of X = 1,261,572.00 and Y = 554,960.00; thence South 12,111.00 feet to a point having Coordinates of X = 1,261,572.00 and Y = 542,849.00; thence West 16,419.00 feet to a point having Coordinates X = 1,245,153.00 and Y = 542,849.00; thence North 12,111.00 feet to a point having Coordinates of X = 1,245,153.00 and Y = 554,960.00; thence East 16,419.00 feet to the point of beginning, **LESS AND EXCEPT** any portion of the above described tract that lies outside the Sabine Island Wildlife Management Area, containing approximately **1,090 acres**, all as more particularly outlined on a plat on file in the Office of Mineral Resources, Department of Natural Resources. All bearings, distances and coordinates are based on Louisiana Coordinate System of 1927, (South Zone).

NOTE: The Department of Wildlife and Fisheries has mandated that any activity associated with a mineral lease on the above described property be subject to and in accordance with, but not necessarily limited to, the following:

1. No activities will be allowed without written authorization of the Louisiana Department of Wildlife and Fisheries. All projects will be coordinated and approved by the Sabine WMA Supervisor prior to any activities on the Wildlife Management Area.
2. Proposed projects will be evaluated on a case by case basis. Modification to proposed project features including but not limited to access routes, spoil placement, well sites, flowlines and appurtenant structures may be required by the Louisiana Department of Wildlife and Fisheries.
3. Compliance with the Sabine WMA regulations will be required unless otherwise specified by the Department.
4. Compensatory mitigation will be required to offset unavoidable wetlands impacts.
5. Removal of all structures, facilities and equipment will be required within 120 days of abandonment unless otherwise agreed to in writing by the Louisiana Department of Wildlife and Fisheries.
6. No activities will be allowed during the hunting season unless authorized by the Department.
7. Prior to submitting applications for wetland permits to Federal and State permitting agencies, the leaseholder shall coordinate project details with the Louisiana Department of Wildlife and Fisheries. Contact person for the Department will be Mike Windham at (504) 568-5886.

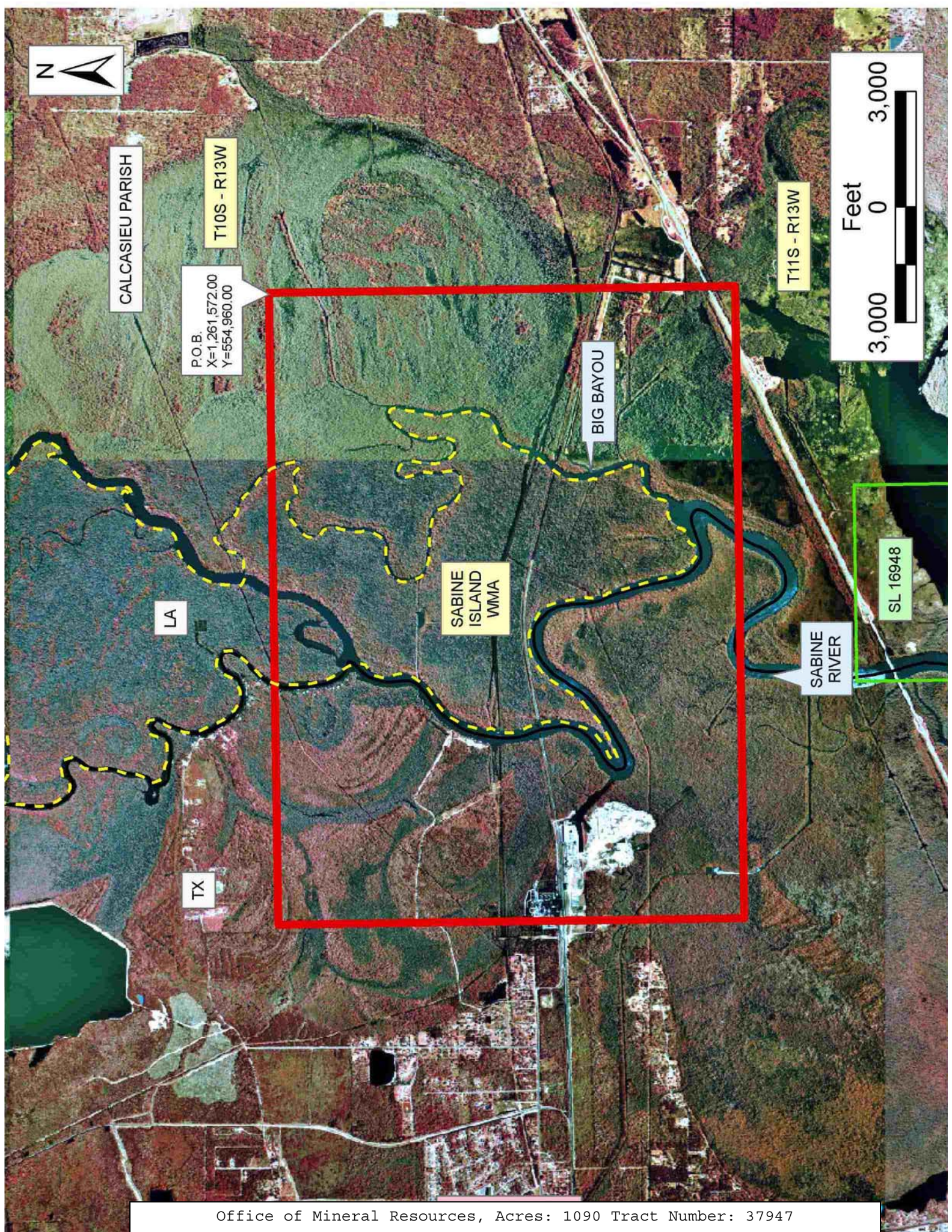


NOTE: The above description of the Tract nominated for lease has been provided and corrected, where required, exclusively by the nomination party. Any mineral lease selected from this Tract and awarded by the Louisiana State Mineral Board shall be without warranty of any kind, either express, implied, or statutory, including, but not limited to, the implied warranties of merchantability and fitness for a particular purpose. Should the mineral lease awarded by the Louisiana State Mineral Board be subsequently modified, cancelled or abrogated due to the existence of conflicting leases, operating agreements, private claims or other future obligations or conditions which may affect all or any portion of the leased Tract, it shall not relieve the Lessee of the obligation to pay any bonus due thereon to the Louisiana State Mineral Board, nor shall the Louisiana State Mineral Board be obligated to refund any consideration paid by the Lessor prior to such modification, cancellation, or abrogation, including, but not limited to, bonuses, rentals and royalties.

Applicant: FRANZ P. SCHOEFFLER

Bidder	Cash Payment	Price/Acre	Rental	Oil	Gas	Other



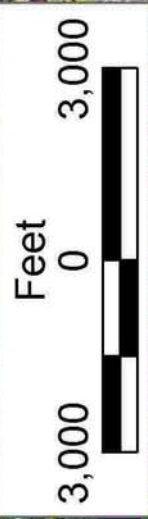


CALCASIEU PARISH

T10S - R13W

P.O.B.  
X=1,261,572.00  
Y=554,960.00

T11S - R13W



LA

SABINE ISLAND WMA

BIG BAYOU

SABINE RIVER

SL 16948

TX