

TRACT 37894 - Portion of Block 10, West Cameron Area, Revised, Cameron Parish, Louisiana

The beds and bottoms of all water bodies belonging to the State of Louisiana located in Block 10, West Cameron Area, Revised, together with any present lands formed by accretion to the shoreline or islands formed therein, located in Cameron Parish, Louisiana, owned by and not presently under mineral lease as of November 9, 2005, from the State of Louisiana, the geographical area of which is more fully described as follows: Beginning at the Northeast corner of Block 10, West Cameron Area, Revised, having Coordinates of X = 1,302,903.42 and Y = 405,754.67; thence along the Northern boundary of said Block 10 the following courses: Southwesterly on a straight line to a point having Coordinates of X = 1,296,747 and Y = 405,049, Southwesterly on a straight line to a point having Coordinates of X = 1,291,413 and Y = 404,205 and Southwesterly on a straight line to the Northwest corner of said Block 10 having Coordinates of X = 1,288,145.38 and Y = 403,746.45; thence South 2,577.18 feet along the West line of said Block 10 to a point having Coordinates of X = 1,288,145.38 and Y = 401,169.27; thence East 14,758.04 feet to a point on the East line of said Block 10 having Coordinates of X = 1,302,903.42 and Y = 401,169.27; thence North 4,585.40 feet along the East line of said Block 10 to the point of beginning, containing approximately **1,232.13 acres**, all as more particularly outlined on a plat on file in the Office of Mineral Resources, Department of Natural Resources. All bearings, distances and coordinates are based on Louisiana Coordinate System of 1927, (North or South Zone).

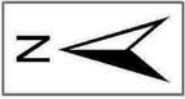
NOTE: The above description of the Tract nominated for lease has been provided and corrected, where required, exclusively by the nomination party. Any mineral lease selected from this Tract and awarded by the Louisiana State Mineral Board shall be without warranty of any kind, either express, implied, or statutory, including, but not limited to, the implied warranties of merchantability and fitness for a particular purpose. Should the mineral lease awarded by the Louisiana State Mineral Board be subsequently modified, cancelled or abrogated due to the existence of conflicting leases, operating agreements, private claims or other future obligations or conditions which may affect all or any portion of the leased Tract, it shall not relieve the Lessee of the obligation to pay any bonus due thereon to the Louisiana State Mineral Board, nor shall the Louisiana State Mineral Board be obligated to refund any consideration paid by the Lessor prior to such modification, cancellation, or abrogation, including, but not limited to, bonuses, rentals and royalties.

NOTE: The State of Louisiana does hereby reserve, and this lease shall be subject to, the imprescriptible right of surface use in the nature of a servitude in favor of the Department of Natural Resources, including its Offices and Commissions, for the sole purpose of implementing, constructing, servicing and maintaining approved coastal zone management and/or restoration projects. Utilization of any and all rights derived under this lease by the mineral lessee, its agents, successors or assigns,

shall not interfere with nor hinder the reasonable surface use by the Department of Natural Resources, its Offices or Commissions, as herein above reserved.

Applicant: PATRICK L. DONOHUE PETROLEUM PROPERTIES, INC.

Bidder	Cash Payment	Price/Acre	Rental	Oil	Gas	Other



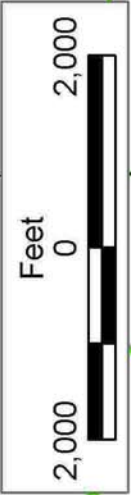
CAMERON PARISH

P.O.B.
X = 1,302,903.42
Y = 405,754.67

BLOCK
WC0009

BLOCK WC0010

WEST CAMERON AREA, REVISED



SL 18259

SL 18260

SL 18235

SL 18361

SL 17307

SL 18362

BLOCK WC0011

TRACT 37895 - Portion of Block 5, West Cameron Area, Revised, Cameron Parish, Louisiana

The beds and bottoms of all water bodies belonging to the State of Louisiana located in Block 5, West Cameron Area, Revised, together with any present lands formed by accretion to the shoreline or islands formed therein, located in Cameron Parish, Louisiana, owned by and not presently under mineral lease as of November 9, 2005, from the State of Louisiana, the geographical area of which is more fully described as follows: Beginning at the Southeast corner of Block 5, West Cameron Area, Revised, having Coordinates of X = 1,377,295.42 and Y = 393,790.24; thence West 15,359.80 feet along the South line of said Block 5 to its Southwest corner having Coordinates of X = 1,361,935.62 and Y = 393,790.24; thence North 3,390.76 feet along the West line of said Block 5 to a point, also being the Southwest corner of State Lease No. 18358 having Coordinates of X = 1,361,935.62 and Y = 397,181.00; thence along the boundary of said State Lease No. 18358 the following courses and distances: East 6,807.80 feet and North 06 degrees 48 minutes 34 seconds West 944.87 feet to a point on the East line of said State Lease No. 18358, also being the Southwest corner of State Lease No. 18389 having Coordinates of X = 1,368,631.39 and Y = 398,119.20; thence North 78 degrees 53 minutes 42 seconds East 7,730.20 feet along the South line of said State Lease No. 18389 to its Southeast corner, also being a point on the South line of State Lease No. 17634 having Coordinates of X = 1,376,216.85 and Y = 399,608.11; thence South 70 degrees 56 minutes 28 seconds East 1,141.12 feet along the South line of said State Lease No. 17634 to its Southeast corner, also being a point on the East line of said Block 5 having Coordinates of X = 1,377,295.42 and Y = 399,235.49; thence South 5,445.25 feet along the East line of said Block 5 to the point of beginning, containing approximately **1,542.92 acres**, all as more particularly outlined on a plat on file in the Office of Mineral Resources, Department of Natural Resources. All bearings, distances and coordinates are based on Louisiana Coordinate System of 1927, (North or South Zone).

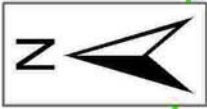
NOTE: The above description of the Tract nominated for lease has been provided and corrected, where required, exclusively by the nomination party. Any mineral lease selected from this Tract and awarded by the Louisiana State Mineral Board shall be without warranty of any kind, either express, implied, or statutory, including, but not limited to, the implied warranties of merchantability and fitness for a particular purpose. Should the mineral lease awarded by the Louisiana State Mineral Board be subsequently modified, cancelled or abrogated due to the existence of conflicting leases, operating agreements, private claims or other future obligations or conditions which may affect all or any portion of the leased Tract, it shall not relieve the Lessee of the obligation to pay any bonus due thereon to the Louisiana State Mineral Board, nor shall the Louisiana State Mineral Board be obligated to refund any consideration paid by the Lessor prior to such modification, cancellation, or abrogation, including, but not limited to, bonuses, rentals and royalties.

NOTE: The State of Louisiana does hereby reserve, and this lease shall be subject to, the imprescriptible right of surface use in the nature of a servitude in favor of the Department of Natural Resources, including its Offices and Commissions, for the sole purpose of implementing, constructing, servicing and maintaining approved coastal zone management and/or restoration projects. Utilization of any and all rights derived under this lease by the mineral lessee, its agents, successors or assigns, shall not interfere with nor hinder the reasonable surface use by the Department of Natural Resources, its Offices or Commissions, as herein above reserved.

NOTE: It appears, according to our records, that a portion of this Tract is located within the restrictive safety fairway area as set out by the Corps of Engineers, U.S. Army and/or the restrictive anchorage area as set out by the U.S. Coast Guard.

Applicant: LENNOX OIL & GAS INTERESTS

Bidder	Cash Payment	Price/Acre	Rental	Oil	Gas	Other



P.O.B.
X = 1,377,295.42
Y = 393,790.24

LA
US

WEST CAMERON AREA, REVISED

CAMERON PARISH

SL 17635

SL 17637

BLOCK WC0004

SL 17633

SL 17634

SL 18389

BLOCK WC0005

BLOCK WC0026

SL 18358

SL 18538

SL 18359

SL 18545

BLOCK WC0006

SL 18526

BLOCK WC0025

SL 18527

TRACT 37896 - Portion of Block 25, West Cameron Area, Revised, Cameron Parish, Louisiana

The beds and bottoms of all water bodies belonging to the State of Louisiana located in Block 25, West Cameron Area, Revised, together with any present lands formed by accretion to the shoreline or islands formed therein, located in Cameron Parish, Louisiana, owned by and not presently under mineral lease as of November 9, 2005, from the State of Louisiana, the geographical area of which is more fully described as follows: Beginning at the Northwest corner of Block 25, West Cameron Area, Revised, also being the Northwest corner of State Lease No. 18547 having Coordinates of X = 1,347,177.57 and Y = 393,790.24; thence South 63 degrees 37 minutes 10 seconds East 7,470.17 feet along the boundary of said State Lease No. 18547 to its most Southerly corner, also being a point on the boundary of State Lease No. 18527 having Coordinates of X = 1,353,869.82 and Y = 390,471.02; thence along the boundary of said State Lease No. 18527 the following courses and distances: South 44 degrees 50 minutes 37 seconds West 1,424.92 feet, South 2,693.75 feet and East 4,257.00 feet to a corner on the Southern boundary of said State Lease No. 18527 having Coordinates of X = 1,357,122.00 and Y = 386,766.95; thence South 6,400.76 feet to a point having Coordinates of X = 1,357,122.00 and Y = 380,366.19; thence along an arc having a radius of 18,240.60 feet and a center at X = 1,362,416 and Y = 397,822 to a point having Coordinates of X = 1,348,021 and Y = 386,619; thence Northwesterly on a straight line to a point having Coordinates of X = 1,347,740 and Y = 386,685; thence Northwesterly on a straight line to a point on the West line of said Block 25 having Coordinates of X = 1,347,177.57 and Y = 386,766.95; thence North 7,023.29 feet along the West line of said Block 26 to the point of beginning, containing approximately **1,580.91 acres, LESS AND EXCEPT** that portion thereof, if any, lying seaward of the line three nautical miles from the coast line of Louisiana, as said three mile line has been decreed by the Supreme Court of the United States, as determined by a Special Master appointed therein, in litigation styled **United States v. State of Louisiana et al No. 9 Original**, in 1975, all as more particularly outlined on a plat in the Office of Mineral Resources, Department of Natural Resources. All bearings, distances and coordinates are based on the Louisiana Coordinate System of 1927, (South Zone).

NOTE: The above description of the Tract nominated for lease has been provided and corrected, where required, exclusively by the nomination party. Any mineral lease selected from this Tract and awarded by the Louisiana State Mineral Board shall be without warranty of any kind, either express, implied, or statutory, including, but not limited to, the implied warranties of merchantability and fitness for a particular purpose. Should the mineral lease awarded by the Louisiana State Mineral Board be subsequently modified, cancelled or abrogated due to the existence of conflicting leases, operating agreements, private claims or other future obligations or conditions which may affect all or any portion of the leased Tract, it shall not relieve the Lessee of the obligation to pay any bonus due thereon to the Louisiana State Mineral Board, nor shall

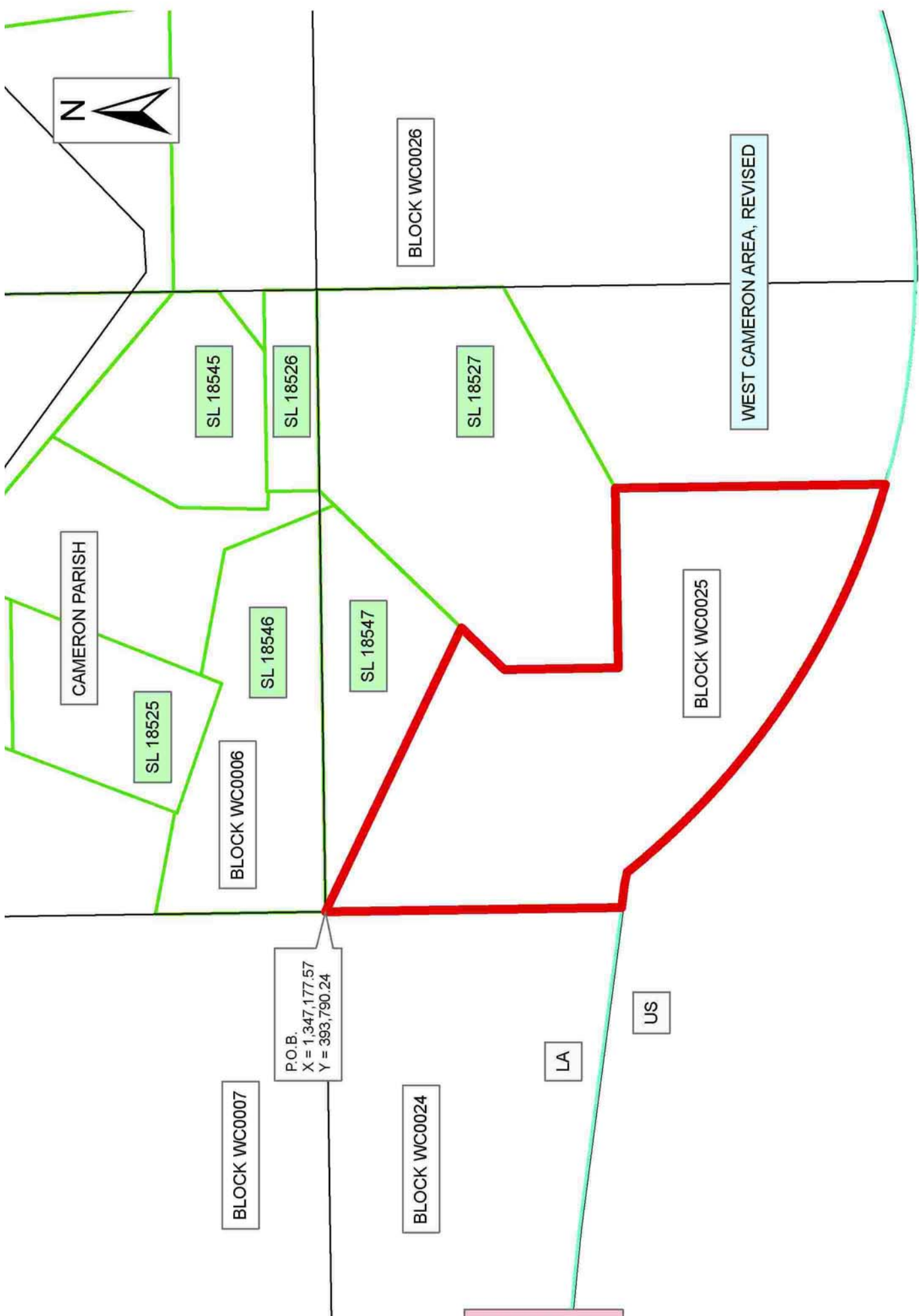
the Louisiana State Mineral Board be obligated to refund any consideration paid by the Lessor prior to such modification, cancellation, or abrogation, including, but not limited to, bonuses, rentals and royalties.

NOTE: The State of Louisiana does hereby reserve, and this lease shall be subject to, the imprescriptible right of surface use in the nature of a servitude in favor of the Department of Natural Resources, including its Offices and Commissions, for the sole purpose of implementing, constructing, servicing and maintaining approved coastal zone management and/or restoration projects. Utilization of any and all rights derived under this lease by the mineral lessee, its agents, successors or assigns, shall not interfere with nor hinder the reasonable surface use by the Department of Natural Resources, its Offices or Commissions, as herein above reserved.

NOTE: It appears, according to our records, that a portion of this Tract is located within the restrictive safety fairway area as set out by the Corps of Engineers, U.S. Army and/or the restrictive anchorage area as set out by the U.S. Coast Guard.

Applicant: LENNOX OIL & GAS INTERESTS

Bidder	Cash Payment	Price/Acre	Rental	Oil	Gas	Other



P.O.B.
 X = 1,347,177.57
 Y = 393,790.24

TRACT 37897 - Portion of Block 26, West Cameron Area, Revised, Cameron Parish, Louisiana

The beds and bottoms of all water bodies belonging to the State of Louisiana located in Block 26, West Cameron Area, Revised, together with any present lands formed by accretion to the shoreline or islands formed therein, located in Cameron Parish, Louisiana, owned by and not presently under mineral lease as of November 9, 2005, from the State of Louisiana, the geographical area of which is more fully described as follows: Beginning at the Northeast corner of Block 26, West Cameron Area, Revised having Coordinates of X = 1,376,693.66 and Y = 393,790.24; thence South 4,426.54 feet along the East line of said Block 26 to a point having Coordinates of X = 1,376,693.66 and Y = 389,363.70; thence West 14,758.04 feet to a point on the West line of said Block 26 having Coordinates of X = 1,361,935.62 and Y = 389,363.70; thence North 4,426.54 feet along the West line of said Block 26 to its Northwest corner having Coordinates of X = 1,361,935.62 and Y = 393,790.24; thence East 14,758.04 feet along the North line of said Block 26 to the point of beginning, containing approximately **1,499.70 acres**, all as more particularly outlined on a plat on file in the Office of Mineral Resources, Department of Natural Resources. All bearings, distances and coordinates are based on Louisiana Coordinate System of 1927, (North or South Zone).

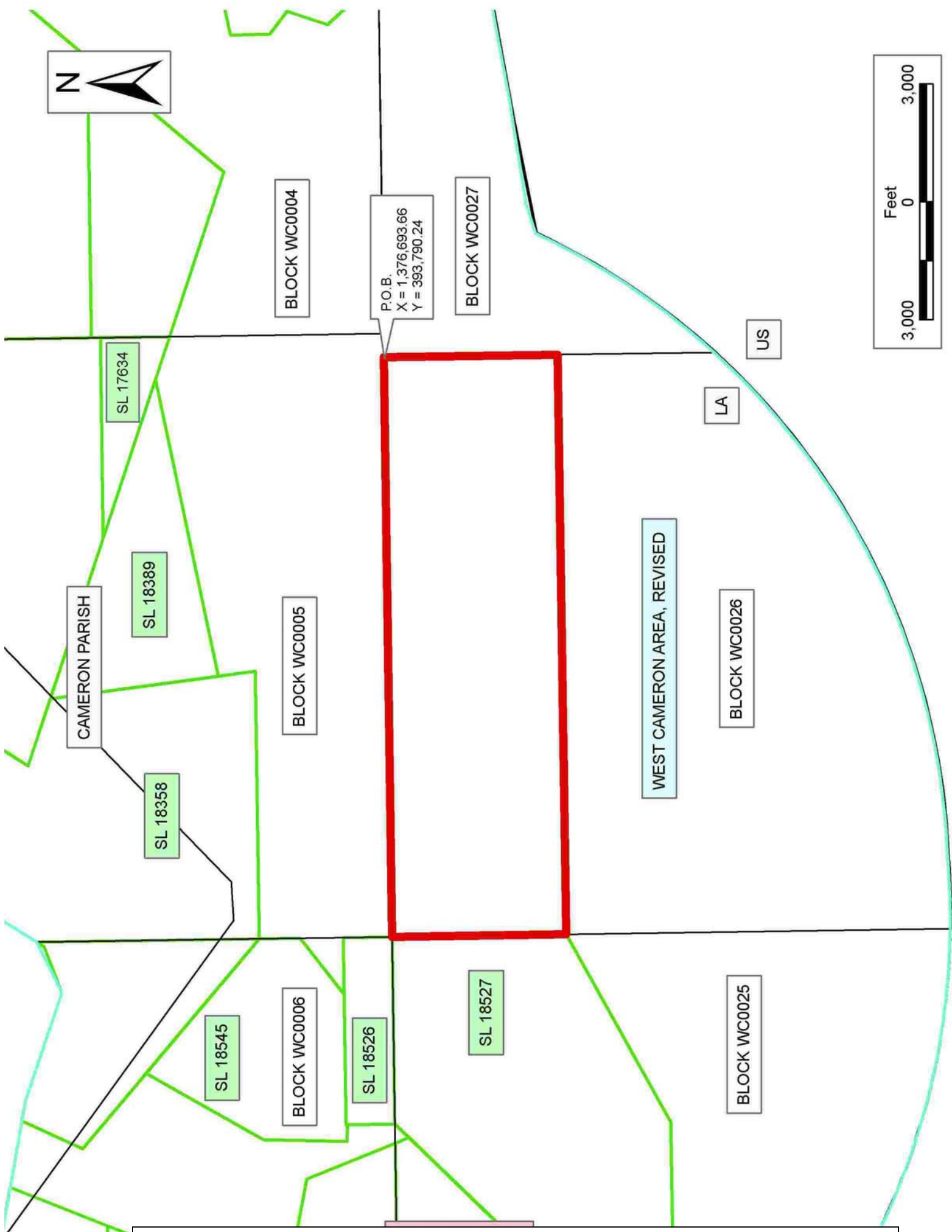
NOTE: The above description of the Tract nominated for lease has been provided and corrected, where required, exclusively by the nomination party. Any mineral lease selected from this Tract and awarded by the Louisiana State Mineral Board shall be without warranty of any kind, either express, implied, or statutory, including, but not limited to, the implied warranties of merchantability and fitness for a particular purpose. Should the mineral lease awarded by the Louisiana State Mineral Board be subsequently modified, cancelled or abrogated due to the existence of conflicting leases, operating agreements, private claims or other future obligations or conditions which may affect all or any portion of the leased Tract, it shall not relieve the Lessee of the obligation to pay any bonus due thereon to the Louisiana State Mineral Board, nor shall the Louisiana State Mineral Board be obligated to refund any consideration paid by the Lessor prior to such modification, cancellation, or abrogation, including, but not limited to, bonuses, rentals and royalties.

NOTE: The State of Louisiana does hereby reserve, and this lease shall be subject to, the imprescriptible right of surface use in the nature of a servitude in favor of the Department of Natural Resources, including its Offices and Commissions, for the sole purpose of implementing, constructing, servicing and maintaining approved coastal zone management and/or restoration projects. Utilization of any and all rights derived under this lease by the mineral lessee, its agents, successors or assigns, shall not interfere with nor hinder the reasonable surface use by the Department of Natural Resources, its Offices or Commissions, as herein above reserved.

NOTE: It appears, according to our records, that a portion of this Tract is located within the restrictive safety fairway area as set out by the Corps of Engineers, U.S. Army and/or the restrictive anchorage area as set out by the U.S. Coast Guard.

Applicant: LENNOX OIL & GAS INTERESTS

Bidder	Cash Payment	Price/Acre	Rental	Oil	Gas	Other



P.O.B.
X = 1,376,693.66
Y = 393,790.24

BLOCK WC0004

BLOCK WC0027

SL 17634

SL 18389

SL 18358

BLOCK WC0005

LA

US

CAMERON PARISH

WEST CAMERON AREA, REVISED

BLOCK WC0026

SL 18545

BLOCK WC0006

SL 18526

SL 18527

BLOCK WC0025

TRACT 37898 - Portion of Blocks 25, and 26, West Cameron Area, Revised, Cameron Parish, Louisiana

The beds and bottoms of all water bodies belonging to the State of Louisiana located in Blocks 25, and 26, West Cameron Area, Revised, together with any present lands formed by accretion to the shoreline or islands formed therein, located in Cameron Parish, Louisiana, owned by and not presently under mineral lease as of November 9, 2005, from the State of Louisiana, the geographical area of which is more fully described as follows: Beginning at a point located within Block 26, West Cameron Area, Revised, having Coordinates of X = 1,369,252.00 and Y = 389,363.70; thence South 8,767.75 feet to a point having Coordinates of X = 1,369,252.00 and Y = 380,595.95; thence along an arc having a radius of 18,240.60 feet and a center at X = 1,363,392 and Y = 397,870 to a point having Coordinates of X = 1,364,288 and Y = 379,651; thence Southwesterly on a straight line to a point having Coordinates of X = 1,363,312 and Y = 379,603; thence along an arc having a radius of 18,240.60 feet and a center at X = 1,362,416 and Y = 397,822 to a point within Block 25, having Coordinates of X = 1,357,122.00 and Y = 380,366.19; thence North 6,400.76 feet to the most Southerly Southeast corner of State Lease No. 18527 having Coordinates of X = 1,357,122.00 and Y = 386,766.95; thence North 61 degrees 39 minutes 18 seconds East 5,469.37 feet along the boundary of said State Lease No. 18527 to its most Easterly Southeast corner, also being a point on the East line of Block 25 and a point on the West line of said Block 26, having Coordinates of X = 1,361,935.62 and Y = 389,363.70; thence East 7,316.38 feet to the point of beginning, containing approximately **2,499.76 acres, LESS AND EXCEPT** that portion thereof, if any, lying seaward of the line three nautical miles from the coast line of Louisiana, as said three mile line has been decreed by the Supreme Court of the United States, as determined by a Special Master appointed therein, in litigation styled **United States v. State of Louisiana et al No. 9 Original**, in 1975, all as more particularly outlined on a plat in the Office of Mineral Resources, Department of Natural Resources. All bearings, distances and coordinates are based on the Louisiana Coordinate System of 1927, (South Zone).

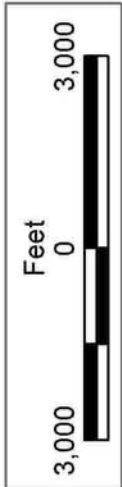
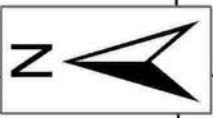
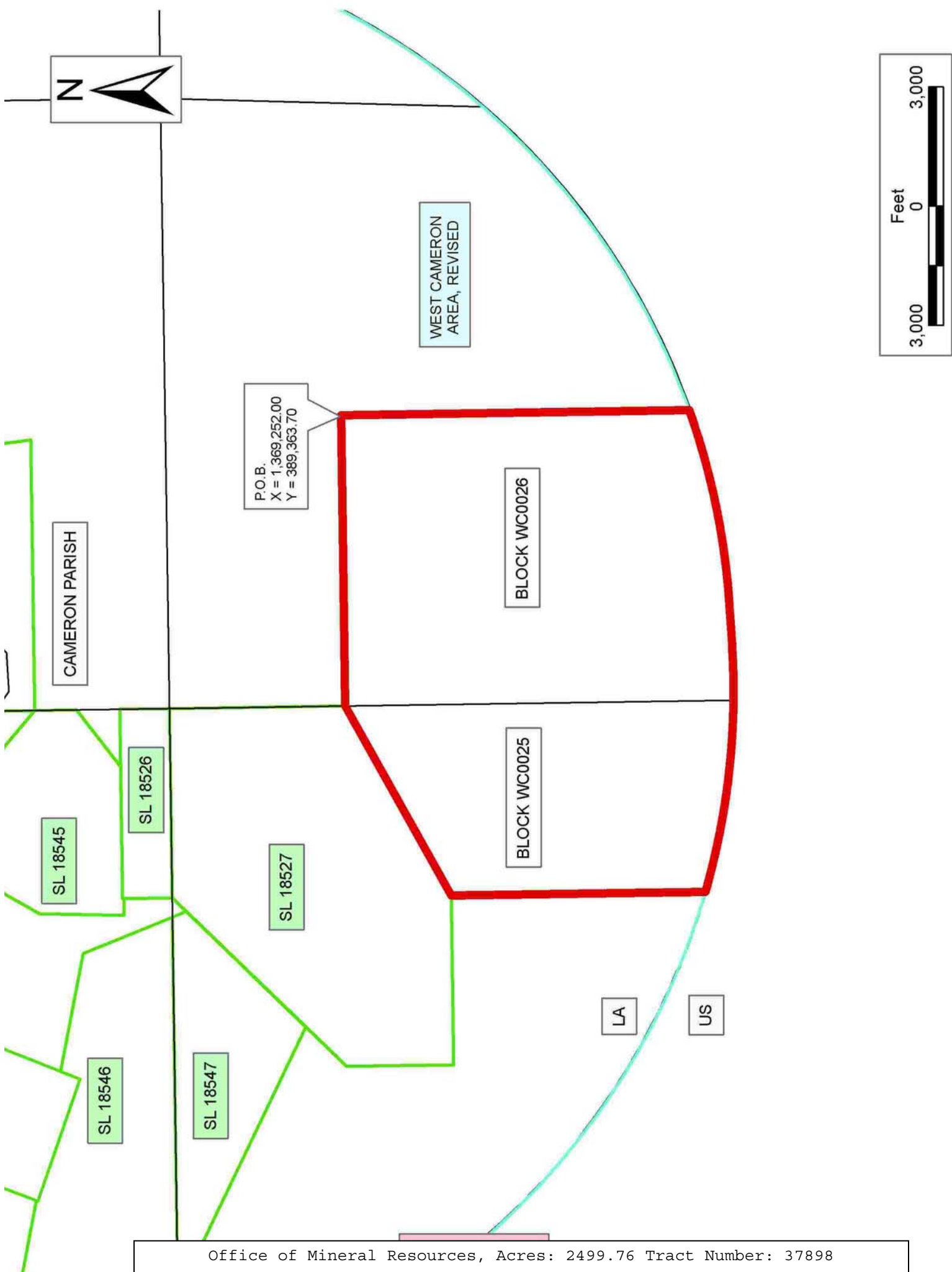
NOTE: The above description of the Tract nominated for lease has been provided and corrected, where required, exclusively by the nomination party. Any mineral lease selected from this Tract and awarded by the Louisiana State Mineral Board shall be without warranty of any kind, either express, implied, or statutory, including, but not limited to, the implied warranties of merchantability and fitness for a particular purpose. Should the mineral lease awarded by the Louisiana State Mineral Board be subsequently modified, cancelled or abrogated due to the existence of conflicting leases, operating agreements, private claims or other future obligations or conditions which may affect all or any portion of the leased Tract, it shall not relieve the Lessee of the obligation to pay any bonus due thereon to the Louisiana State Mineral Board, nor shall the Louisiana State Mineral Board be obligated to refund any consideration paid by the Lessor prior to such modification, cancellation, or abrogation, including, but not limited to, bonuses, rentals and royalties.

NOTE: The State of Louisiana does hereby reserve, and this lease shall be subject to, the imprescriptible right of surface use in the nature of a servitude in favor of the Department of Natural Resources, including its Offices and Commissions, for the sole purpose of implementing, constructing, servicing and maintaining approved coastal zone management and/or restoration projects. Utilization of any and all rights derived under this lease by the mineral lessee, its agents, successors or assigns, shall not interfere with nor hinder the reasonable surface use by the Department of Natural Resources, its Offices or Commissions, as herein above reserved.

NOTE: It appears, according to our records, that a portion of this Tract is located within the restrictive safety fairway area as set out by the Corps of Engineers, U.S. Army and/or the restrictive anchorage area as set out by the U.S. Coast Guard.

Applicant: LENNOX OIL & GAS INTERESTS

Bidder	Cash Payment	Price/Acre	Rental	Oil	Gas	Other



P.O.I.
X = 1,369,252.00
Y = 389,363.70

WEST CAMERON
AREA, REVISED

BLOCK WC0026

BLOCK WC0025

CAMERON PARISH

LA

US

SL 18545

SL 18526

SL 18527

SL 18546

SL 18547

TRACT 37899 - Portion of Block 26, West Cameron Area, Revised, Cameron Parish, Louisiana

The beds and bottoms of all water bodies belonging to the State of Louisiana located in Block 26, West Cameron Area, Revised, together with any present lands formed by accretion to the shoreline or islands formed therein, located in Cameron Parish, Louisiana, owned by and not presently under mineral lease as of November 9, 2005, from the State of Louisiana, the geographical area of which is more fully described as follows: Beginning at a point located within Block 26, West Cameron Area, Revised, having Coordinates of X = 1,369,252.00 and Y = 389,363.70; thence East 7,441.66 feet to a point on the East line of said Block 26 having Coordinates of X = 1,376,693.66 and Y = 389,363.70; thence South 3,975.36 feet along the East line of said Block 26 to a point having Coordinates of X = 1,376,693.66 and Y = 385,388.34; thence along an arc having a radius of 18,240.60 feet and a center at X = 1,363,392 and Y = 397,870 to a point having Coordinates of X = 1,369,252.00 and Y = 380,595.95; thence North 8,767.75 feet to the point of beginning, containing approximately **1,162.55 acres, LESS AND EXCEPT** that portion thereof, if any, lying seaward of the line three nautical miles from the coast line of Louisiana, as said three mile line has been decreed by the Supreme Court of the United States, as determined by a Special Master appointed therein, in litigation styled **United States v. State of Louisiana et al No. 9 Original**, in 1975, all as more particularly outlined on a plat in the Office of Mineral Resources, Department of Natural Resources. All bearings, distances and coordinates are based on the Louisiana Coordinate System of 1927, (South Zone).

NOTE: The above description of the Tract nominated for lease has been provided and corrected, where required, exclusively by the nomination party. Any mineral lease selected from this Tract and awarded by the Louisiana State Mineral Board shall be without warranty of any kind, either express, implied, or statutory, including, but not limited to, the implied warranties of merchantability and fitness for a particular purpose. Should the mineral lease awarded by the Louisiana State Mineral Board be subsequently modified, cancelled or abrogated due to the existence of conflicting leases, operating agreements, private claims or other future obligations or conditions which may affect all or any portion of the leased Tract, it shall not relieve the Lessee of the obligation to pay any bonus due thereon to the Louisiana State Mineral Board, nor shall the Louisiana State Mineral Board be obligated to refund any consideration paid by the Lessor prior to such modification, cancellation, or abrogation, including, but not limited to, bonuses, rentals and royalties.

NOTE: The State of Louisiana does hereby reserve, and this lease shall be subject to, the imprescriptible right of surface use in the nature of a servitude in favor of the Department of Natural Resources, including its Offices and Commissions, for the sole purpose of implementing, constructing, servicing and maintaining approved coastal zone management and/or restoration projects. Utilization of any and all rights derived under this lease by the mineral lessee, its agents, successors or assigns,

shall not interfere with nor hinder the reasonable surface use by the Department of Natural Resources, its Offices or Commissions, as herein above reserved.

NOTE: It appears, according to our records, that a portion of this Tract is located within the restrictive safety fairway area as set out by the Corps of Engineers, U.S. Army and/or the restrictive anchorage area as set out by the U.S. Coast Guard.

Applicant: LENNOX OIL & GAS INTERESTS

Bidder	Cash Payment	Price/Acre	Rental	Oil	Gas	Other

