

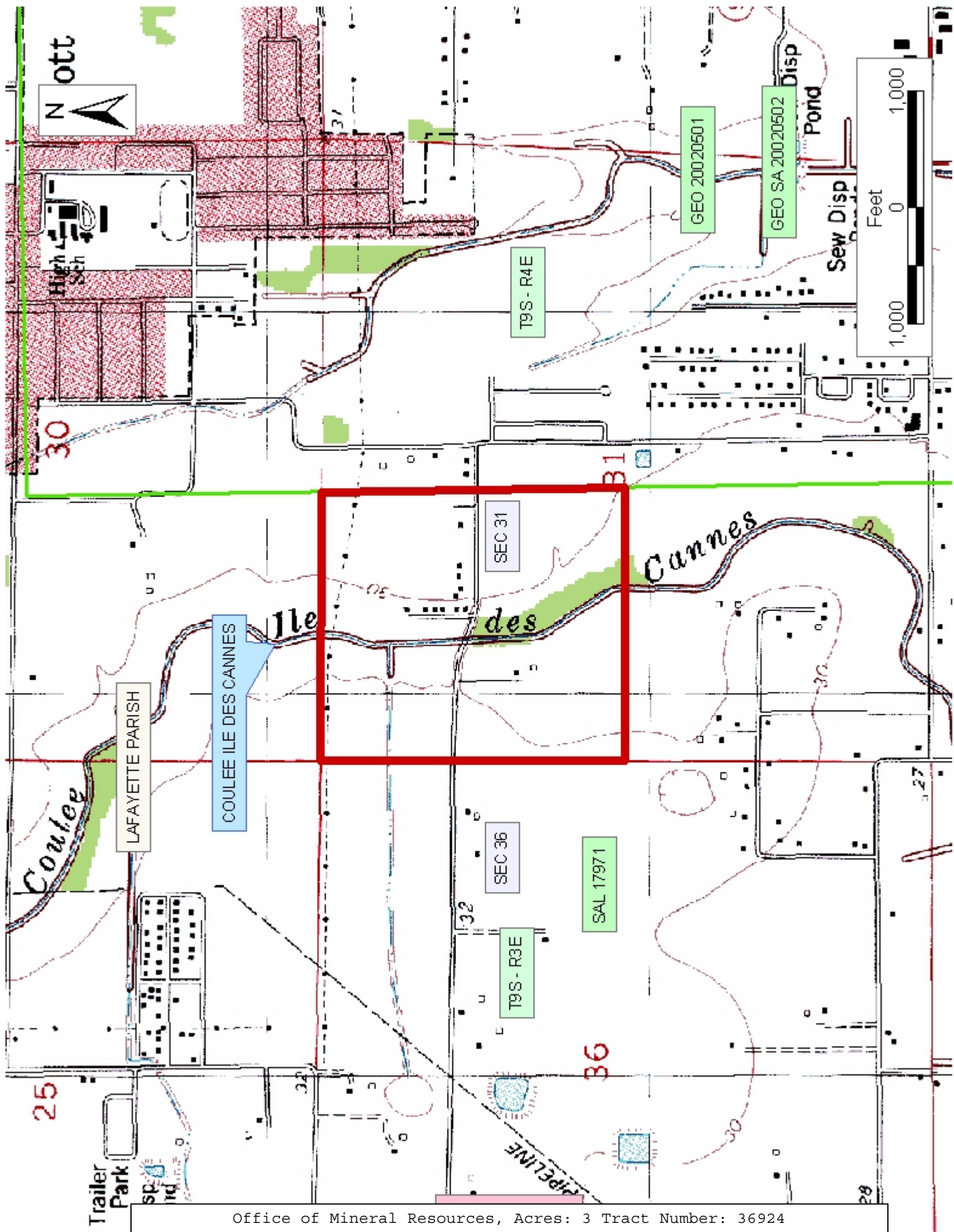
**TRACT 36924 - Lafayette Parish, Louisiana**

A certain Tract of land, excluding the beds and bottoms of all navigable waters, belonging to and not presently under mineral lease from Lafayette Consolidated Government on November 10, 2004, being more fully described as follows: A certain tract of land, excluding the beds and bottoms of all navigable waters, belonging to and not presently under mineral lease from Lafayette City Parish Consolidated Government on November 10, 2004 being more fully described as follows: All roads, streets and highways lying in the North Half (N/2) of Section 31, Township 9 South Range 4 East, Lafayette, Parish LA., being bounded on the West by a portion of State Lease No. 17971 and on the East by SA GEO 20020502 and GEO 20020501, containing approximately **3.000 acres**, all as more particularly outlined on a plat on file in the Office of Mineral Resources, Department of Natural Resources. The description is based on information provided by the State Agency regarding location and ownership of surface and mineral rights. All bearings, distances and coordinates, if applicable, are based on Louisiana Coordinate System of 1927, (North or South Zone).

NOTE: The above description of the Tract nominated for lease has been provided and corrected, where required, exclusively by the nomination party. Any mineral lease selected from this Tract and awarded by the Louisiana State Mineral Board shall be without warranty of any kind, either express, implied, or statutory, including, but not limited to, the implied warranties of merchantability and fitness for a particular purpose. Should the mineral lease awarded by the Louisiana State Mineral Board be subsequently modified, cancelled or abrogated due to the existence of conflicting leases, operating agreements, private claims or other future obligations or conditions which may affect all or any portion of the leased Tract, it shall not relieve the Lessee of the obligation to pay any bonus due thereon to the Louisiana State Mineral Board, nor shall the Louisiana State Mineral Board be obligated to refund any consideration paid by the Lessor prior to such modification, cancellation, or abrogation, including, but not limited to, bonuses, rentals and royalties.

Applicant: Janus Exploration, Inc. to Agency and by Resolution from the Lafayette Consolidated Government authorizing the Mineral Board to act in its behalf

Bidder	Cash Payment	Price/Acre	Rental	Oil	Gas	Other



**TRACT 36925 - Vermilion Parish, Louisiana**

A certain Tract of land, excluding the beds and bottoms of all navigable waters, belonging to and not presently under mineral lease from Vermilion Parish Consolidated Gravity Drainage Dist. No. 1 on November 10, 2004, being more fully described as follows: Beginning at a point having Coordinates of X = 1,770,591.60 and Y = 500,136.11; thence North 89 degrees 58 minutes 26 seconds East 2,779.95 feet to a point having Coordinates of X = 1,773,371.56 and Y = 500,137.38; thence South 07 degrees 58 minutes 08 seconds East 834.93 feet to a point having Coordinates of X = 1,773,487.31 and Y = 499,310.52; thence North 89 degrees 46 minutes 50 seconds West 2,855.23 feet to a point having Coordinates of X = 1,770,632.09 and Y = 499,321.45; thence North 4 degrees 35 minutes 34 seconds West 505.83 feet to a point having Coordinates of X = 1,770,591.59 and Y = 499,825.65; thence North 0 degrees 0 minutes 6 seconds East 310.45 feet to the point of beginning, containing approximately **2.87 acres**, all as more particularly outlined on a plat on file in the Office of Mineral Resources, Department of Natural Resources. The description is based on information provided by the State Agency regarding location and ownership of surface and mineral rights. All bearings, distances and coordinates, if applicable, are based on Louisiana Coordinate System of 1927, (North or South Zone).

NOTE: The above description of the Tract nominated for lease has been provided and corrected, where required, exclusively by the nomination party. Any mineral lease selected from this Tract and awarded by the Louisiana State Mineral Board shall be without warranty of any kind, either express, implied, or statutory, including, but not limited to, the implied warranties of merchantability and fitness for a particular purpose. Should the mineral lease awarded by the Louisiana State Mineral Board be subsequently modified, cancelled or abrogated due to the existence of conflicting leases, operating agreements, private claims or other future obligations or conditions which may affect all or any portion of the leased Tract, it shall not relieve the Lessee of the obligation to pay any bonus due thereon to the Louisiana State Mineral Board, nor shall the Louisiana State Mineral Board be obligated to refund any consideration paid by the Lessor prior to such modification, cancellation, or abrogation, including, but not limited to, bonuses, rentals and royalties.

NOTE: The State of Louisiana does hereby reserve, and this lease shall be subject to, the imprescriptible right of surface use in the nature of a servitude in favor of the Department of Natural Resources, including its Offices and Commissions, for the sole purpose of implementing, constructing, servicing and maintaining approved coastal zone management and/or restoration projects. Utilization of any and all rights derived under this lease by the mineral lessee, its agents, successors or assigns, shall not interfere with nor hinder the reasonable surface use by the Department of Natural Resources, its Offices or Commissions, as herein above reserved.

Applicant: Acadian Land Services, L.L.C. to Agency and by Resolution from the Vermilion Parish Consolidated Gravity Drainage Dist. No. 1 authorizing the Mineral Board to act in its behalf

Bidder	Cash Payment	Price/Acre	Rental	Oil	Gas	Other

