

TRACT 36911 - Jefferson Parish, Louisiana

All of the lands now or formerly constituting the beds and bottoms of all water bodies of every nature and description the title of which vests in the State of Louisiana, together with all islands arising therein and other lands formed by accretion or by reliction, where allowed by law, excepting tax adjudicated lands, and not presently under mineral lease on November 10, 2004, situated in Jefferson Parish, Louisiana, and more particularly described as follows: Beginning at a point having Coordinates of X = 2,363,772.00 and Y = 322,573.00; thence North 3,937.00 feet to a point having Coordinates of X = 2,363,772.00 and Y = 326,510.00; thence East 3,809.00 feet to a point having Coordinates of X = 2,367,581.00 and Y = 326,510.00; thence South 3,937.00 feet to a point having Coordinates of X = 2,367,581.00 and Y = 322,573.00; thence West 3,809.00 feet to the point of beginning, containing approximately **344.26 acres**, all as more particularly outlined on a plat on file in the Office of Mineral Resources, Department of Natural Resources. All bearings, distances and coordinates are based on Louisiana Coordinate System of 1927, (North or South Zone), where applicable.

NOTE: The above description of the Tract nominated for lease has been provided and corrected, where required, exclusively by the nomination party. Any mineral lease selected from this Tract and awarded by the Louisiana State Mineral Board shall be without warranty of any kind, either express, implied, or statutory, including, but not limited to, the implied warranties of merchantability and fitness for a particular purpose. Should the mineral lease awarded by the Louisiana State Mineral Board be subsequently modified, cancelled or abrogated due to the existence of conflicting leases, operating agreements, private claims or other future obligations or conditions which may affect all or any portion of the leased Tract, it shall not relieve the Lessee of the obligation to pay any bonus due thereon to the Louisiana State Mineral Board, nor shall the Louisiana State Mineral Board be obligated to refund any consideration paid by the Lessor prior to such modification, cancellation, or abrogation, including, but not limited to, bonuses, rentals and royalties.

NOTE: The State of Louisiana does hereby reserve, and this lease shall be subject to, the imprescriptible right of surface use in the nature of a servitude in favor of the Department of Natural Resources, including its Offices and Commissions, for the sole purpose of implementing, constructing, servicing and maintaining approved coastal zone management and/or restoration projects. Utilization of any and all rights derived under this lease by the mineral lessee, its agents, successors or assigns, shall not interfere with nor hinder the reasonable surface use by the Department of Natural Resources, its Offices or Commissions, as herein above reserved.

NOTE: The Department of Wildlife and Fisheries has designated certain areas in the coastal waters of the State of Louisiana as Oyster Seed Bed Areas. The exact location of those Seed Bed Areas must be obtained from

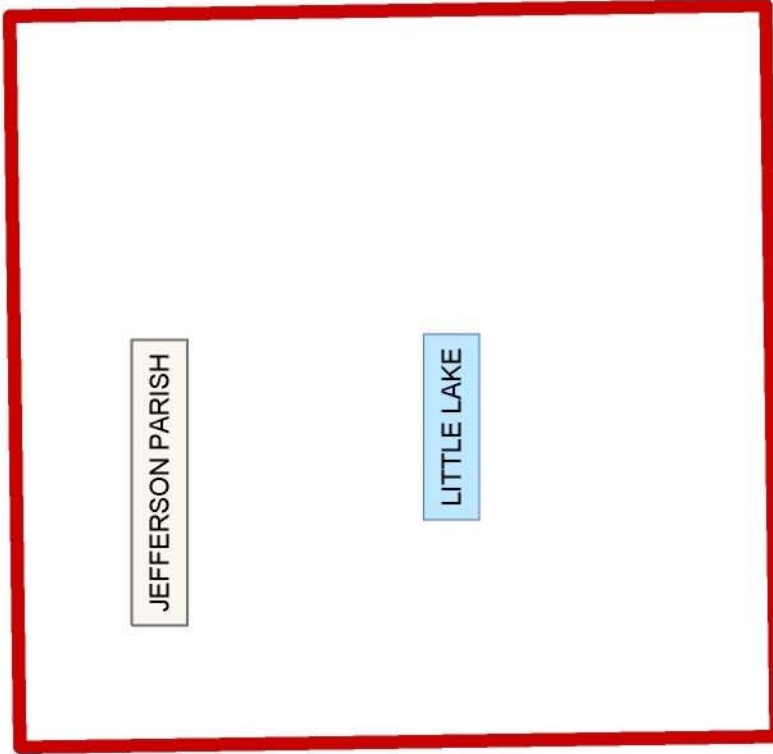
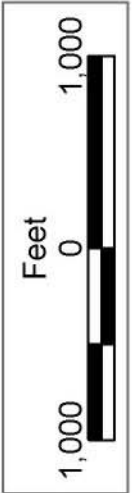
the Department of Wildlife and Fisheries and any work done under a mineral lease from the State of Louisiana may necessarily be conducted in conformity with the rules and regulations promulgated by the said Department of Wildlife and Fisheries for Oyster Seed Bed Areas.

Applicant: Cypress Energy Corporation

Bidder	Cash Payment	Price/Acre	Rental	Oil	Gas	Other



SL 1972



JEFFERSON PARISH

LITTLE LAKE

P.O.B.
X=2,363,772.00
Y=322,573.00

LAFOURCHE PARISH

TRACT 36912 - Lafourche Parish, Louisiana

All of the lands now or formerly constituting the beds and bottoms of all water bodies of every nature and description the title of which vests in the State of Louisiana, together with all islands arising therein and other lands formed by accretion or by reliction, where allowed by law, excepting tax adjudicated lands, and not presently under mineral lease on November 10, 2004, situated in Lafourche Parish, Louisiana, and more particularly described as follows: Beginning at a point having Coordinates of X = 2,359,963.00 and Y = 322,573.00; thence West 3,809.00 feet to a point having Coordinates of X = 2,356,154.00 and Y = 322,573.00; thence North 3,937.00 feet to a point having Coordinates of X = 2,356,154.00 and Y = 326,510.00; thence East 3,809.00 feet to a point having Coordinates of X = 2,359,963.00 and Y = 326,510.00; thence South 3,937.00 feet to the point of beginning, containing approximately **343 acres**, all as more particularly outlined on a plat on file in the Office of Mineral Resources, Department of Natural Resources. All bearings, distances and coordinates are based on Louisiana Coordinate System of 1927, (North or South Zone), where applicable.

NOTE: The above description of the Tract nominated for lease has been provided and corrected, where required, exclusively by the nomination party. Any mineral lease selected from this Tract and awarded by the Louisiana State Mineral Board shall be without warranty of any kind, either express, implied, or statutory, including, but not limited to, the implied warranties of merchantability and fitness for a particular purpose. Should the mineral lease awarded by the Louisiana State Mineral Board be subsequently modified, cancelled or abrogated due to the existence of conflicting leases, operating agreements, private claims or other future obligations or conditions which may affect all or any portion of the leased Tract, it shall not relieve the Lessee of the obligation to pay any bonus due thereon to the Louisiana State Mineral Board, nor shall the Louisiana State Mineral Board be obligated to refund any consideration paid by the Lessor prior to such modification, cancellation, or abrogation, including, but not limited to, bonuses, rentals and royalties.

NOTE: The State of Louisiana does hereby reserve, and this lease shall be subject to, the imprescriptible right of surface use in the nature of a servitude in favor of the Department of Natural Resources, including its Offices and Commissions, for the sole purpose of implementing, constructing, servicing and maintaining approved coastal zone management and/or restoration projects. Utilization of any and all rights derived under this lease by the mineral lessee, its agents, successors or assigns, shall not interfere with nor hinder the reasonable surface use by the Department of Natural Resources, its Offices or Commissions, as herein above reserved.

Applicant: Cypress Energy Corporation

Bidder	Cash Payment	Price/Acre	Rental	Oil	Gas	Other



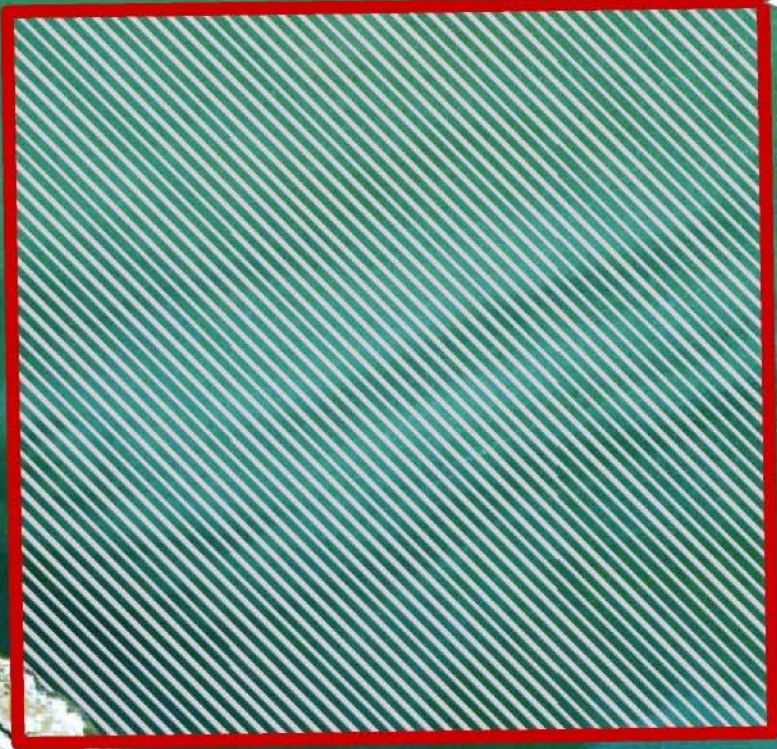
JEFFERSON
PARISH

LITTLE LAKE

LAFOURCHE PARISH



P.O.B.
X=2,359,963.00
Y=322,573.00



T17S - R22E

T18S - R22E

TRACT 36913 - Jefferson and Lafourche Parishes, Louisiana

All of the lands now or formerly constituting the beds and bottoms of all water bodies of every nature and description the title of which vests in the State of Louisiana, together with all islands arising therein and other lands formed by accretion or by reliction, where allowed by law, excepting tax adjudicated lands, and not presently under mineral lease on November 10, 2004, situated in Jefferson and Lafourche Parishes, Louisiana, and more particularly described as follows: Beginning at a point having Coordinates of X = 2,363,772.00 and Y = 322,573.00; thence West 3,809.00 feet to a point having Coordinates of X = 2,359,963.00 and Y = 322,573.00; thence North 3,937.00 feet to a point having Coordinates of X = 2,359,963.00 and Y = 326,510.00; thence East 3,809.00 feet to a point having Coordinates of X = 2,363,772.00 and Y = 326,510.00; thence South 3,937.00 feet to the point of beginning, containing approximately **344.26 acres**, all as more particularly outlined on a plat on file in the Office of Mineral Resources, Department of Natural Resources. All bearings, distances and coordinates are based on Louisiana Coordinate System of 1927, (North or South Zone), where applicable.

NOTE: The above description of the Tract nominated for lease has been provided and corrected, where required, exclusively by the nomination party. Any mineral lease selected from this Tract and awarded by the Louisiana State Mineral Board shall be without warranty of any kind, either express, implied, or statutory, including, but not limited to, the implied warranties of merchantability and fitness for a particular purpose. Should the mineral lease awarded by the Louisiana State Mineral Board be subsequently modified, cancelled or abrogated due to the existence of conflicting leases, operating agreements, private claims or other future obligations or conditions which may affect all or any portion of the leased Tract, it shall not relieve the Lessee of the obligation to pay any bonus due thereon to the Louisiana State Mineral Board, nor shall the Louisiana State Mineral Board be obligated to refund any consideration paid by the Lessor prior to such modification, cancellation, or abrogation, including, but not limited to, bonuses, rentals and royalties.

NOTE: The State of Louisiana does hereby reserve, and this lease shall be subject to, the imprescriptible right of surface use in the nature of a servitude in favor of the Department of Natural Resources, including its Offices and Commissions, for the sole purpose of implementing, constructing, servicing and maintaining approved coastal zone management and/or restoration projects. Utilization of any and all rights derived under this lease by the mineral lessee, its agents, successors or assigns, shall not interfere with nor hinder the reasonable surface use by the Department of Natural Resources, its Offices or Commissions, as herein above reserved.

NOTE: The Department of Wildlife and Fisheries has designated certain areas in the coastal waters of the State of Louisiana as Oyster Seed Bed Areas. The exact location of those Seed Bed Areas must be obtained from

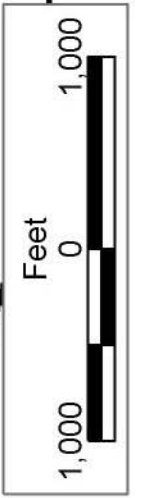
the Department of Wildlife and Fisheries and any work done under a mineral lease from the State of Louisiana may necessarily be conducted in conformity with the rules and regulations promulgated by the said Department of Wildlife and Fisheries for Oyster Seed Bed Areas.

Applicant: Cypress Energy Corporation

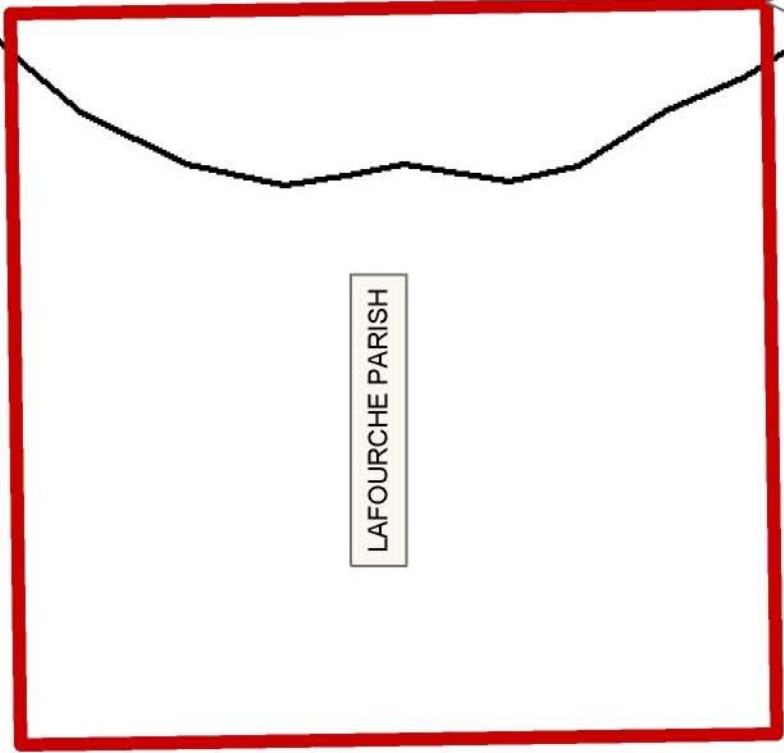
Bidder	Cash Payment	Price/Acre	Rental	Oil	Gas	Other



JEFFERSON PARISH



P.O.B.
X=2,363,772.00
Y=322,573.00



LAFOURCHE PARISH

LITTLE LAKE

TRACT 36914 - Lafourche Parish, Louisiana

All of the lands now or formerly constituting the beds and bottoms of all water bodies of every nature and description the title of which vests in the State of Louisiana, together with all islands arising therein and other lands formed by accretion or by reliction, where allowed by law, excepting tax adjudicated lands, and not presently under mineral lease on November 10, 2004, situated in Lafourche Parish, Louisiana, and more particularly described as follows: Beginning at a point having Coordinates of X = 2,359,963.00 and Y = 322,573.00; thence South 3,937.00 feet to a point having Coordinates of X = 2,359,963.00 and Y = 318,636.00; thence West 3,809.00 feet to a point having Coordinates of X = 2,356,154.00 and Y = 318,636.00; thence North 3,937.00 feet to a point having Coordinates of X = 2,356,154.00 and Y = 322,573.00; thence East 3,809.00 feet to the point of beginning, containing approximately **344.26 acres**, all as more particularly outlined on a plat on file in the Office of Mineral Resources, Department of Natural Resources. All bearings, distances and coordinates are based on Louisiana Coordinate System of 1927, (North or South Zone), where applicable.

NOTE: The above description of the Tract nominated for lease has been provided and corrected, where required, exclusively by the nomination party. Any mineral lease selected from this Tract and awarded by the Louisiana State Mineral Board shall be without warranty of any kind, either express, implied, or statutory, including, but not limited to, the implied warranties of merchantability and fitness for a particular purpose. Should the mineral lease awarded by the Louisiana State Mineral Board be subsequently modified, cancelled or abrogated due to the existence of conflicting leases, operating agreements, private claims or other future obligations or conditions which may affect all or any portion of the leased Tract, it shall not relieve the Lessee of the obligation to pay any bonus due thereon to the Louisiana State Mineral Board, nor shall the Louisiana State Mineral Board be obligated to refund any consideration paid by the Lessor prior to such modification, cancellation, or abrogation, including, but not limited to, bonuses, rentals and royalties.

NOTE: The State of Louisiana does hereby reserve, and this lease shall be subject to, the imprescriptible right of surface use in the nature of a servitude in favor of the Department of Natural Resources, including its Offices and Commissions, for the sole purpose of implementing, constructing, servicing and maintaining approved coastal zone management and/or restoration projects. Utilization of any and all rights derived under this lease by the mineral lessee, its agents, successors or assigns, shall not interfere with nor hinder the reasonable surface use by the Department of Natural Resources, its Offices or Commissions, as herein above reserved.

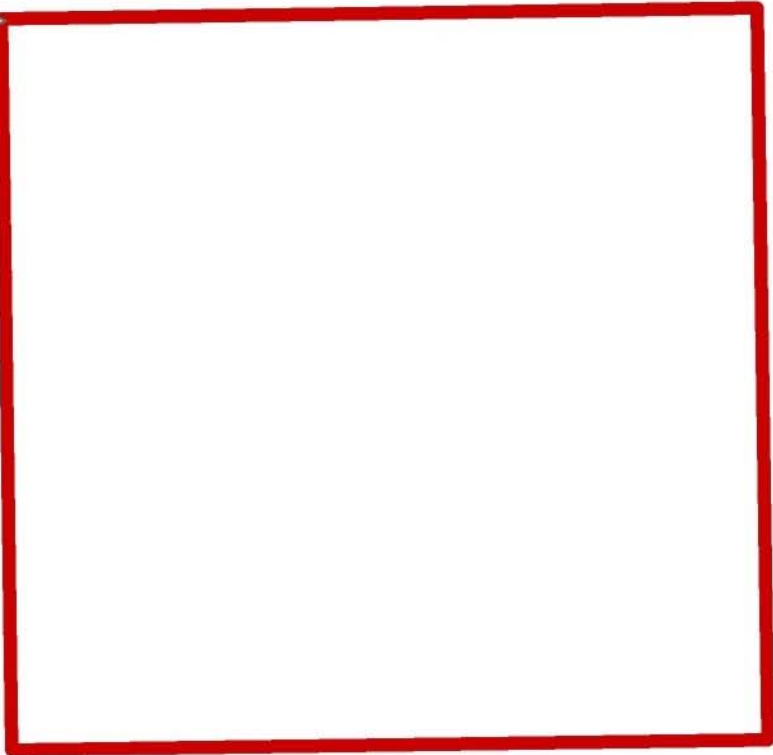
Applicant: Cyprss Energy Corporation

Bidder	Cash Payment	Price/Acre	Rental	Oil	Gas	Other



JEFFERSON
PARISH

P.O.B.
X=2,359,963.00
Y=322,573.00



LITTLE LAKE

LAFOURCHE PARISH



TRACT 36915 - Jefferson and Lafourche Parishes, Louisiana

All of the lands now or formerly constituting the beds and bottoms of all water bodies of every nature and description the title of which vests in the State of Louisiana, together with all islands arising therein and other lands formed by accretion or by reliction, where allowed by law, excepting tax adjudicated lands, and not presently under mineral lease on November 10, 2004, situated in Jefferson and Lafourche Parishes, Louisiana, and more particularly described as follows: Beginning at a point having Coordinates of X = 2,363,772.00 and Y = 322,573.00; thence South 3,937.00 feet to a point having Coordinates of X = 2,363,772.00 and Y = 318,636.00; thence West 3,809.00 feet to a point having Coordinates of X = 2,359,963.00 and Y = 318,636.00; thence North 3,937.00 feet to a point having Coordinates of X = 2,359,963.00 and Y = 322,573.00; thence East 3,809.00 feet to the point of beginning, containing approximately **344.26 acres**, all as more particularly outlined on a plat on file in the Office of Mineral Resources, Department of Natural Resources. All bearings, distances and coordinates are based on Louisiana Coordinate System of 1927, (North or South Zone), where applicable.

NOTE: The above description of the Tract nominated for lease has been provided and corrected, where required, exclusively by the nomination party. Any mineral lease selected from this Tract and awarded by the Louisiana State Mineral Board shall be without warranty of any kind, either express, implied, or statutory, including, but not limited to, the implied warranties of merchantability and fitness for a particular purpose. Should the mineral lease awarded by the Louisiana State Mineral Board be subsequently modified, cancelled or abrogated due to the existence of conflicting leases, operating agreements, private claims or other future obligations or conditions which may affect all or any portion of the leased Tract, it shall not relieve the Lessee of the obligation to pay any bonus due thereon to the Louisiana State Mineral Board, nor shall the Louisiana State Mineral Board be obligated to refund any consideration paid by the Lessor prior to such modification, cancellation, or abrogation, including, but not limited to, bonuses, rentals and royalties.

NOTE: The State of Louisiana does hereby reserve, and this lease shall be subject to, the imprescriptible right of surface use in the nature of a servitude in favor of the Department of Natural Resources, including its Offices and Commissions, for the sole purpose of implementing, constructing, servicing and maintaining approved coastal zone management and/or restoration projects. Utilization of any and all rights derived under this lease by the mineral lessee, its agents, successors or assigns, shall not interfere with nor hinder the reasonable surface use by the Department of Natural Resources, its Offices or Commissions, as herein above reserved.

NOTE: The Department of Wildlife and Fisheries has designated certain areas in the coastal waters of the State of Louisiana as Oyster Seed Bed Areas. The exact location of those Seed Bed Areas must be obtained from

the Department of Wildlife and Fisheries and any work done under a mineral lease from the State of Louisiana may necessarily be conducted in conformity with the rules and regulations promulgated by the said Department of Wildlife and Fisheries for Oyster Seed Bed Areas.

Applicant: Cypress Energy Corporation

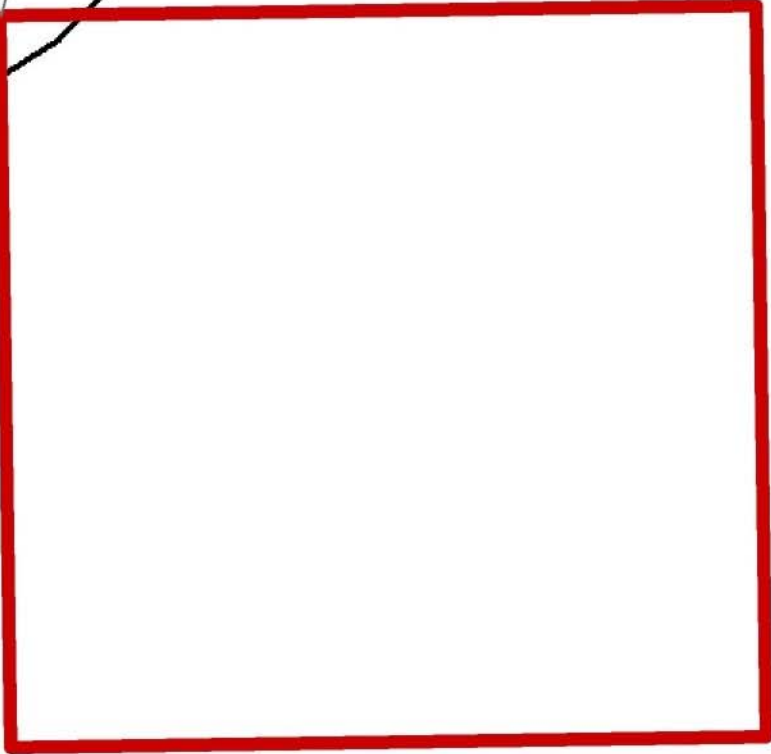
Bidder	Cash Payment	Price/Acre	Rental	Oil	Gas	Other



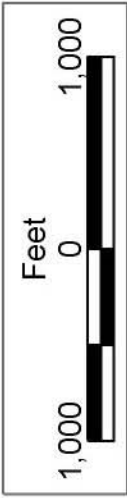
JEFFERSON PARISH

LAFOURCHE PARISH

P.O.B.
X=2,363,772.00
Y=322,573.00



LITTLE LAKE



TRACT 36916 - Jefferson and Lafourche Parishes, Louisiana

All of the lands now or formerly constituting the beds and bottoms of all water bodies of every nature and description the title of which vests in the State of Louisiana, together with all islands arising therein and other lands formed by accretion or by reliction, where allowed by law, excepting tax adjudicated lands, and not presently under mineral lease on November 10, 2004, situated in Jefferson and Lafourche Parishes, Louisiana, and more particularly described as follows: Beginning at a point having Coordinates of X = 2,363,772.00 and Y = 322,573.00; thence East 3,809.00 feet to a point having Coordinates of X = 2,367,581.00 and Y = 322,573.00; thence South 3,937.00 feet to a point having Coordinates of X = 2,367,581.00 and Y = 318,636.00; thence West 3,809.00 feet to a point having Coordinates of X = 2,363,772.00 and Y = 318,636.00; thence North 3,937.00 feet to the point of beginning, containing approximately **344.26 acres**, all as more particularly outlined on a plat on file in the Office of Mineral Resources, Department of Natural Resources. All bearings, distances and coordinates are based on Louisiana Coordinate System of 1927, (North or South Zone), where applicable.

NOTE: The above description of the Tract nominated for lease has been provided and corrected, where required, exclusively by the nomination party. Any mineral lease selected from this Tract and awarded by the Louisiana State Mineral Board shall be without warranty of any kind, either express, implied, or statutory, including, but not limited to, the implied warranties of merchantability and fitness for a particular purpose. Should the mineral lease awarded by the Louisiana State Mineral Board be subsequently modified, cancelled or abrogated due to the existence of conflicting leases, operating agreements, private claims or other future obligations or conditions which may affect all or any portion of the leased Tract, it shall not relieve the Lessee of the obligation to pay any bonus due thereon to the Louisiana State Mineral Board, nor shall the Louisiana State Mineral Board be obligated to refund any consideration paid by the Lessor prior to such modification, cancellation, or abrogation, including, but not limited to, bonuses, rentals and royalties.

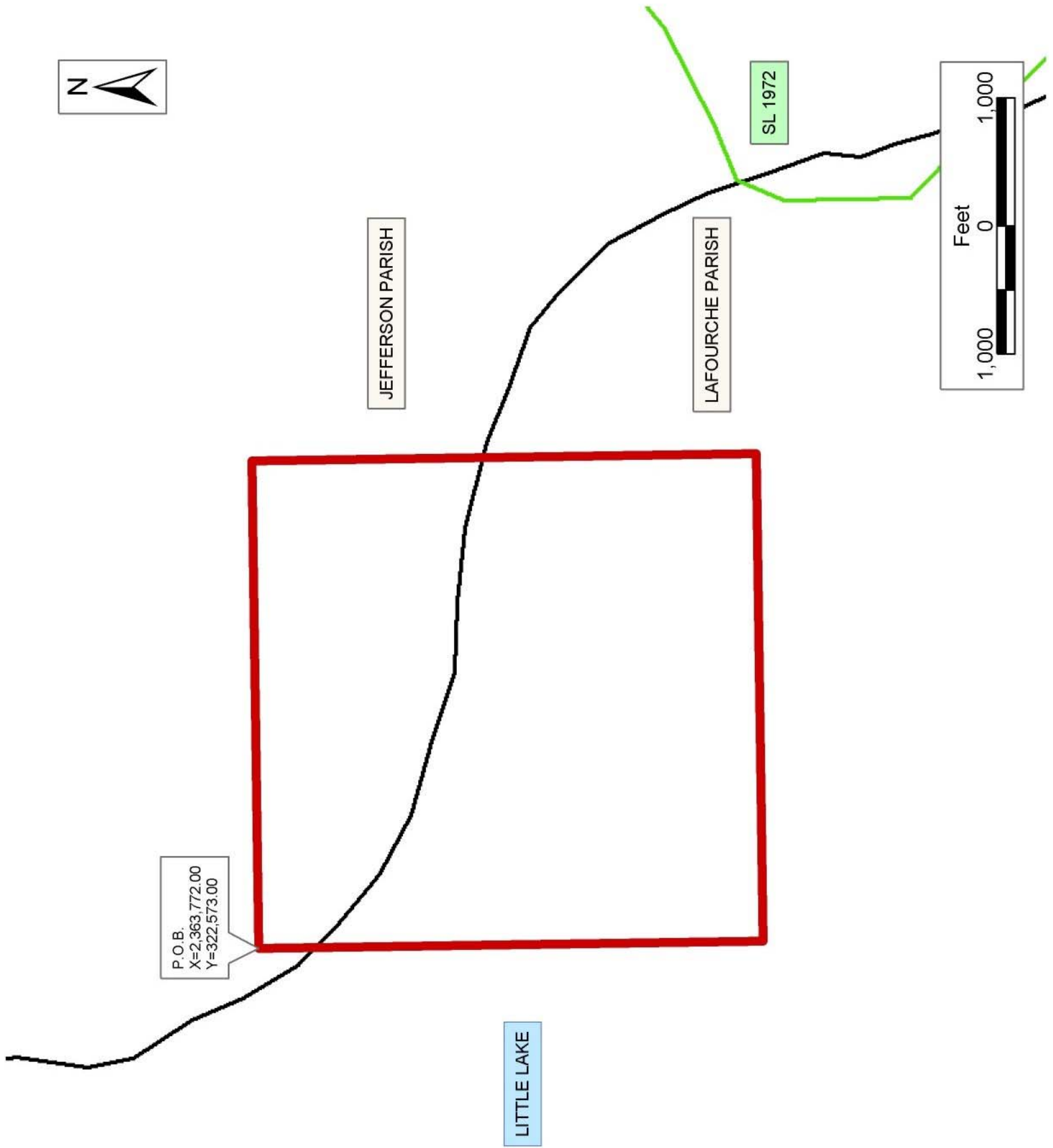
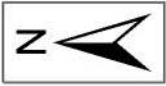
NOTE: The State of Louisiana does hereby reserve, and this lease shall be subject to, the imprescriptible right of surface use in the nature of a servitude in favor of the Department of Natural Resources, including its Offices and Commissions, for the sole purpose of implementing, constructing, servicing and maintaining approved coastal zone management and/or restoration projects. Utilization of any and all rights derived under this lease by the mineral lessee, its agents, successors or assigns, shall not interfere with nor hinder the reasonable surface use by the Department of Natural Resources, its Offices or Commissions, as herein above reserved.

NOTE: The Department of Wildlife and Fisheries has designated certain areas in the coastal waters of the State of Louisiana as Oyster Seed Bed Areas. The exact location of those Seed Bed Areas must be obtained from

the Department of Wildlife and Fisheries and any work done under a mineral lease from the State of Louisiana may necessarily be conducted in conformity with the rules and regulations promulgated by the said Department of Wildlife and Fisheries for Oyster Seed Bed Areas.

Applicant: Cypress Energy Corporation

Bidder	Cash Payment	Price/Acre	Rental	Oil	Gas	Other



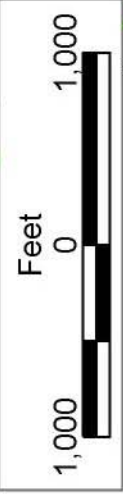
P.O.B.
X=2,363,772.00
Y=322,573.00

JEFFERSON PARISH

LAFOURCHE PARISH

SL 1972

LITTLE LAKE



TRACT 36917 - Terrebonne Parish, Louisiana

All of the lands now or formerly constituting the beds and bottoms of all water bodies of every nature and description the title of which vests in the State of Louisiana, together with all islands arising therein and other lands formed by accretion or by reliction, where allowed by law, excepting tax adjudicated lands, and not presently under mineral lease on November 10, 2004, situated in Terrebonne Parish, Louisiana, and more particularly described as follows: Beginning at a point having Coordinates of X = 2,060,240.00 and Y = 322,638.69; thence East 2,471.65 feet to a point having Coordinates of X = 2,062,711.65 and Y = 322,638.69; thence South 01 degree 00 minutes 00 seconds East 5,209.48 feet to a point having Coordinates of X = 2,062,802.58 and Y = 317,430.00; thence East 1,862.91 feet to a point having Coordinates of X = 2,064,665.49 and Y = 317,430.00; thence North 89 degrees 31 minutes 15 seconds East 655.71 feet to a point on the West boundary of State Lease No. 14927, as amended, having Coordinates of X = 2,065,321.17 and Y = 317,435.48; thence along the boundaries of said State Lease No. 14927 the following: South 01 degree 34 minutes 38 seconds East 1324.97 feet, North 89 degrees 30 minutes 59 seconds East 5,409.79 feet, North 01 degree 31 minutes 06 seconds West 1,324.60, South 89 degrees 31 minutes 15 seconds West 1,366.45 feet, North 01 degree 00 minutes 00 seconds West 1,311.07 and South 89 degree 28 minutes 44 seconds West 3,942.25 feet to its most North Northwest corner having Coordinates of X = 2,065,400.77 and Y = 318,744.40; thence North 01 degree 00 minutes 04 seconds West 3,924.48 feet to a point having Coordinates of X = 2,065,332.20 and Y = 322,668.28; thence North 89 degrees 18 minutes 24 seconds East 10,884.50 feet to a point having Coordinates of X = 2,076,215.91 and Y = 322,800.00; thence South 5,272.92 feet to a point on the North boundary of State Lease No. 16363, having Coordinates of X = 2,076,215.91 and Y = 317,527.08; thence South 89 degrees 31 minutes 15 seconds West 2,640.00 feet along the North boundary of said State Lease No. 16363 to its Northwest corner having Coordinates of X = 2,073,576.00 and Y = 317,505.00; thence South 5,345.00 feet along the West boundary of said State lease No. 16363 to a corner having Coordinates of X = 2,073,576.00 and Y = 312,160.00; thence South 89 degrees 45 minutes 49 seconds West 13,336.11 feet to the Southeast corner of State Lease No. 18044 having Coordinates of X = 2,060,240.00 and Y = 312,105.00; thence North 5,065.00 feet along the East boundary of said State Lease No. 18044 to its Northeast corner having Coordinates of X = 2,060,240.00 and Y = 317,170.00; thence North 5,468.69 feet to the point of beginning, **LESS AND EXCEPT** all those portions of State Lease No. 13346 and State Lease No. 14927, as amended, that may lie within the boundaries of the above describe tract, containing approximately **66 acres**, all as more particularly outlined on a plat on file in the Office of Mineral Resources, Department of Natural Resources. All bearings, distances and coordinates are based on Louisiana Coordinate System of 1927, (North or South Zone), where applicable.

NOTE: The above description of the Tract nominated for lease has been provided and corrected, where required, exclusively by the nomination

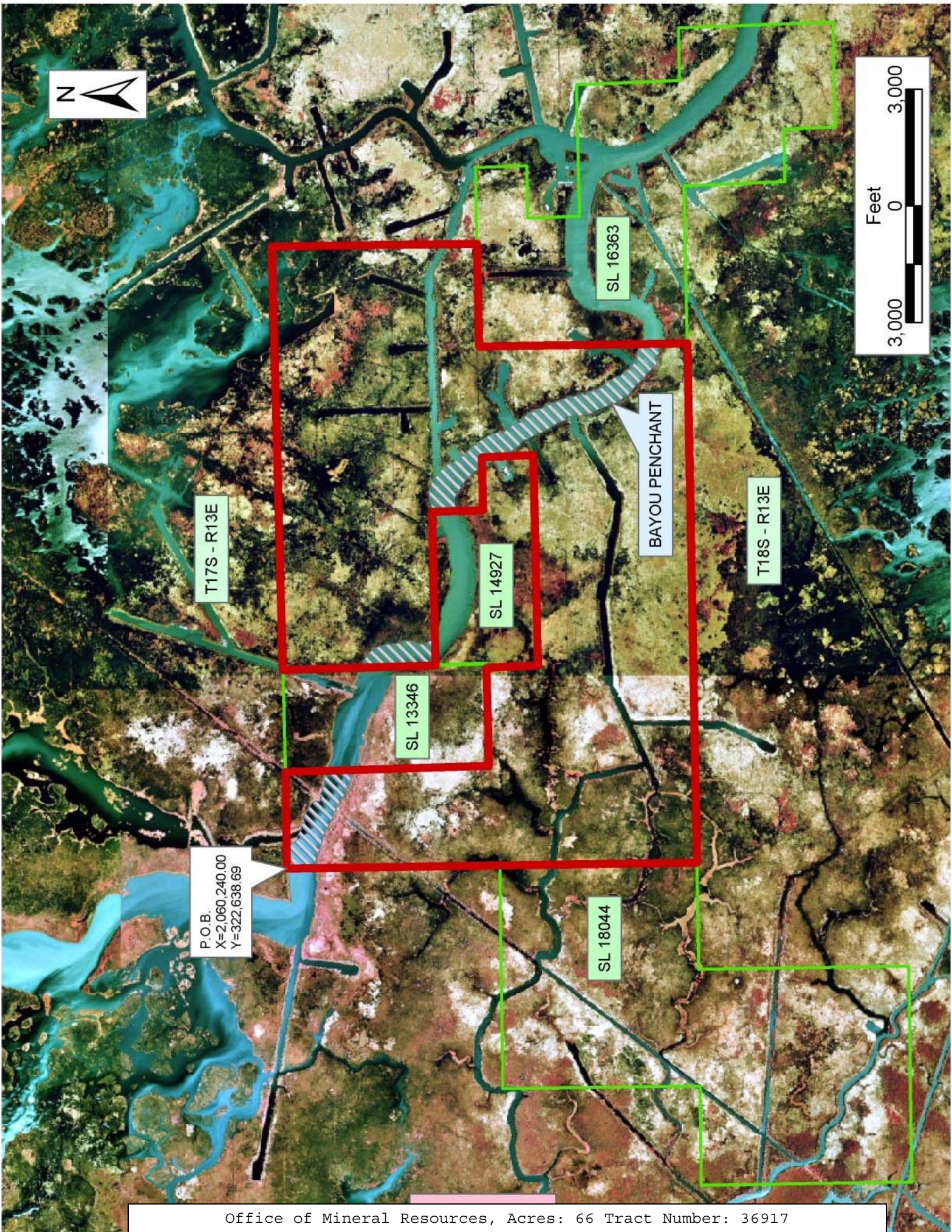
party. Any mineral lease selected from this Tract and awarded by the Louisiana State Mineral Board shall be without warranty of any kind, either express, implied, or statutory, including, but not limited to, the implied warranties of merchantability and fitness for a particular purpose. Should the mineral lease awarded by the Louisiana State Mineral Board be subsequently modified, cancelled or abrogated due to the existence of conflicting leases, operating agreements, private claims or other future obligations or conditions which may affect all or any portion of the leased Tract, it shall not relieve the Lessee of the obligation to pay any bonus due thereon to the Louisiana State Mineral Board, nor shall the Louisiana State Mineral Board be obligated to refund any consideration paid by the Lessor prior to such modification, cancellation, or abrogation, including, but not limited to, bonuses, rentals and royalties.

NOTE: The State of Louisiana does hereby reserve, and this lease shall be subject to, the imprescriptible right of surface use in the nature of a servitude in favor of the Department of Natural Resources, including its Offices and Commissions, for the sole purpose of implementing, constructing, servicing and maintaining approved coastal zone management and/or restoration projects. Utilization of any and all rights derived under this lease by the mineral lessee, its agents, successors or assigns, shall not interfere with nor hinder the reasonable surface use by the Department of Natural Resources, its Offices or Commissions, as herein above reserved.

NOTE: The above Tract is located upon a restricted scenic river and all operations in this area must be conducted in strict conformity with the regulations of the Corps of Engineers, U.S. Army.

Applicant: Theophilus Oil, Gas & Land Services, LLC

Bidder	Cash Payment	Price/Acre	Rental	Oil	Gas	Other



TRACT 36918 - Terrebonne Parish, Louisiana

All of the lands now or formerly constituting the beds and bottoms of all water bodies of every nature and description the title of which vests in the State of Louisiana, together with all islands arising therein and other lands formed by accretion or by reliction, where allowed by law, excepting tax adjudicated lands, and not presently under mineral lease on November 10, 2004, situated in Terrebonne Parish, Louisiana, and more particularly described as follows: Beginning at a point having Coordinates of X = 2,195,809.97 and Y = 188,907.07; thence North 00 degrees 20 minutes 05 seconds West 5,280.00 feet to a point having Coordinates of X = 2,195,779.12 and Y = 194,186.98; thence South 89 degrees 39 minutes 52 seconds West 1,588.00 feet to a point having Coordinates of X = 2,194,191.15 and Y = 194,177.68; thence North 00 degrees 20 minutes 05 seconds West approximately 1,128 feet to the Southwest corner of the Northern portion of State Lease No. 15785, as amended; thence along the boundary of said State Lease No. 15785 the following courses: North 52 degrees 33 minutes 08 seconds East 388.18 feet, North 55 degrees 43 minutes 00 seconds East 597.85 feet, North 57 degrees 26 minutes 32 seconds East 1,049.08 feet, North 60 degrees 29 minutes 10 seconds East 598.14 feet, North 65 degrees 10 minutes 10 seconds East 364.05 feet, North 69 degrees 56 minutes 22 seconds East 430.07 feet, North 74 degrees 11 minutes 18 seconds East 373.98 feet, North 76 degrees 08 minutes 56 seconds East 336.38 feet, North 80 degrees 48 minutes 55 seconds East 150.92 feet, North 10 degrees 23 minutes 05 seconds East 181.74 feet, North 83 degrees 36 minutes 24 seconds East 153.84 feet, North 78 degrees 40 minutes 19 seconds East 253.99 feet, North 22 degrees 12 minutes 57 seconds East 328.72 feet, North 26 degrees 43 minutes 55 seconds East 197.81 feet, North 33 degrees 21 minutes 56 seconds East 165.61 feet, North 39 degrees 12 minutes 29 seconds East 165.44 feet, North 44 degrees 21 minutes 18 seconds East 212.30 feet, North 48 degrees 56 minutes 49 seconds East 138.68 feet, and North 53 degrees 46 minutes 29 seconds East 199.59 feet to its Northeast corner; thence Easterly approximately 5,275 feet to a point having Coordinates of X = 2,204,494.11 and Y = 198,629.97; thence Southerly approximately 3,203 feet to a Northwest corner of State Lease No. 199, as amended; thence Southerly approximately 593 feet on the Western boundary of said State Lease No. 199 to the Northeast corner of the Southern portion of said State Lease No. 15785; thence along the boundary of said State Lease No. 15785 the following courses: South 74 degrees 23 minutes 20 seconds West 194.42 feet, South 68 degrees 10 minutes 28 seconds West 1,373.91 feet; South 71 degrees 59 minutes 41 seconds West 405.14 feet, South 72 degrees 58 minutes 11 seconds West 1,205.97 feet, North 39 degrees 06 minutes 59 seconds West 92.50 feet, South 79 degrees 22 minutes 08 seconds West 565.44 feet, South 74 degrees 46 minutes 10 seconds West 214.23 feet, South 64 degrees 39 minutes 17 seconds West 233.40 feet, and South 55 degrees 53 minutes 00 seconds West 258.17 feet to its Southwest corner and a point on the North line of State Lease No. 16790; thence along the boundary of said State Lease No. 16790 the following courses: Westerly approximately 1,651 feet, South 00 degrees 20 minutes 05 seconds East 313.00 feet, South 89 degrees 39 minutes 55

seconds West 700.00 feet, South 00 degrees 20 minutes 05 seconds East 2,700.00 feet, South 89 degrees 39 minutes 55 seconds West 1,000.00 feet, South 00 degrees 20 minutes 05 seconds East 1,200.00 feet, South 89 degrees 39 minutes 55 seconds West 200.00 feet, South 00 degrees 20 minutes 05 seconds East 280.00 feet, and South 89 degrees 39 minutes 55 seconds West 969.99 feet to the point of beginning, **LESS AND EXCEPT** any portions of State Lease No. 199, as amended, State Lease No. 15785, as amended, State Lease No. 16790 and State lease No. 15398, as amended, that may lie within the above described tract, containing approximately **313 acres**, all as more particularly outlined on a plat on file in the Office of Mineral Resources, Department of Natural Resources. All bearings, distances and coordinates are based on Louisiana Coordinate System of 1927, (North or South Zone), where applicable.

NOTE: The above description of the Tract nominated for lease has been provided and corrected, where required, exclusively by the nomination party. Any mineral lease selected from this Tract and awarded by the Louisiana State Mineral Board shall be without warranty of any kind, either express, implied, or statutory, including, but not limited to, the implied warranties of merchantability and fitness for a particular purpose. Should the mineral lease awarded by the Louisiana State Mineral Board be subsequently modified, cancelled or abrogated due to the existence of conflicting leases, operating agreements, private claims or other future obligations or conditions which may affect all or any portion of the leased Tract, it shall not relieve the Lessee of the obligation to pay any bonus due thereon to the Louisiana State Mineral Board, nor shall the Louisiana State Mineral Board be obligated to refund any consideration paid by the Lessor prior to such modification, cancellation, or abrogation, including, but not limited to, bonuses, rentals and royalties.

NOTE: The State of Louisiana does hereby reserve, and this lease shall be subject to, the imprescriptible right of surface use in the nature of a servitude in favor of the Department of Natural Resources, including its Offices and Commissions, for the sole purpose of implementing, constructing, servicing and maintaining approved coastal zone management and/or restoration projects. Utilization of any and all rights derived under this lease by the mineral lessee, its agents, successors or assigns, shall not interfere with nor hinder the reasonable surface use by the Department of Natural Resources, its Offices or Commissions, as herein above reserved.

NOTE: The Department of Wildlife and Fisheries has designated certain areas in the coastal waters of the State of Louisiana as Oyster Seed Bed Areas. The exact location of those Seed Bed Areas must be obtained from the Department of Wildlife and Fisheries and any work done under a mineral lease from the State of Louisiana may necessarily be conducted in conformity with the rules and regulations promulgated by the said Department of Wildlife and Fisheries for Oyster Seed Bed Areas.

Applicant: The Louisiana Land And Exploration Company

Bidder	Cash Payment	Price/Acre	Rental	Oil	Gas	Other



TRACT 36919 - Terrebonne Parish, Louisiana

All of the lands now or formerly constituting the beds and bottoms of all water bodies of every nature and description the title of which vests in the State of Louisiana, together with all islands arising therein and other lands formed by accretion or by reliction, where allowed by law, excepting tax adjudicated lands, and not presently under mineral lease on November 10, 2004, situated in Terrebonne Parish, Louisiana, and more particularly described as follows: Beginning at a point having Coordinates of X = 2,195,809.97 and Y = 188,907.07; thence North 89 degrees 39 minutes 55 seconds East 969.99 feet to a point on the boundary of State Lease No. 16790 having Coordinates of X = 2,196,779.95 and Y = 188,912.74; thence along the boundary of said State Lease No. 16790 the following courses: South 00 degrees 20 minutes 05 seconds East 420.00 feet, South 89 degrees 39 minutes 55 seconds West 800.00 feet, South 00 degrees 20 minutes 05 seconds East 276.79 feet, and North 88 degrees 57 minutes 20 seconds East approximately 8,664 feet to its Southeast corner and a point on the Western boundary of State Lease No. 199, as amended; thence Southerly approximately 15,251 feet on the Western boundary of said State Lease No. 199 to the point of intersection with a line having a bearing of North 89 degrees 39 minutes 55 seconds East, commencing from a point having Coordinates of X = 2,195,902.50 and Y = 173,067.34; thence South 89 degrees 39 minutes 55 seconds West approximately 8,965 feet along said line to said point having Coordinates of X = 2,195,902.50 and Y = 173,067.34; thence North 00 degrees 20 minutes 05 seconds West 15,840.00 feet to the point of beginning, **LESS AND EXCEPT** any portions of State Lease No. 199, as amended that may lie within the above described tract, containing approximately **1250 acres**, all as more particularly outlined on a plat on file in the Office of Mineral Resources, Department of Natural Resources. All bearings, distances and coordinates are based on Louisiana Coordinate System of 1927, (North or South Zone), where applicable.

NOTE: The above description of the Tract nominated for lease has been provided and corrected, where required, exclusively by the nomination party. Any mineral lease selected from this Tract and awarded by the Louisiana State Mineral Board shall be without warranty of any kind, either express, implied, or statutory, including, but not limited to, the implied warranties of merchantability and fitness for a particular purpose. Should the mineral lease awarded by the Louisiana State Mineral Board be subsequently modified, cancelled or abrogated due to the existence of conflicting leases, operating agreements, private claims or other future obligations or conditions which may affect all or any portion of the leased Tract, it shall not relieve the Lessee of the obligation to pay any bonus due thereon to the Louisiana State Mineral Board, nor shall the Louisiana State Mineral Board be obligated to refund any consideration paid by the Lessor prior to such modification, cancellation, or abrogation, including, but not limited to, bonuses, rentals and royalties.

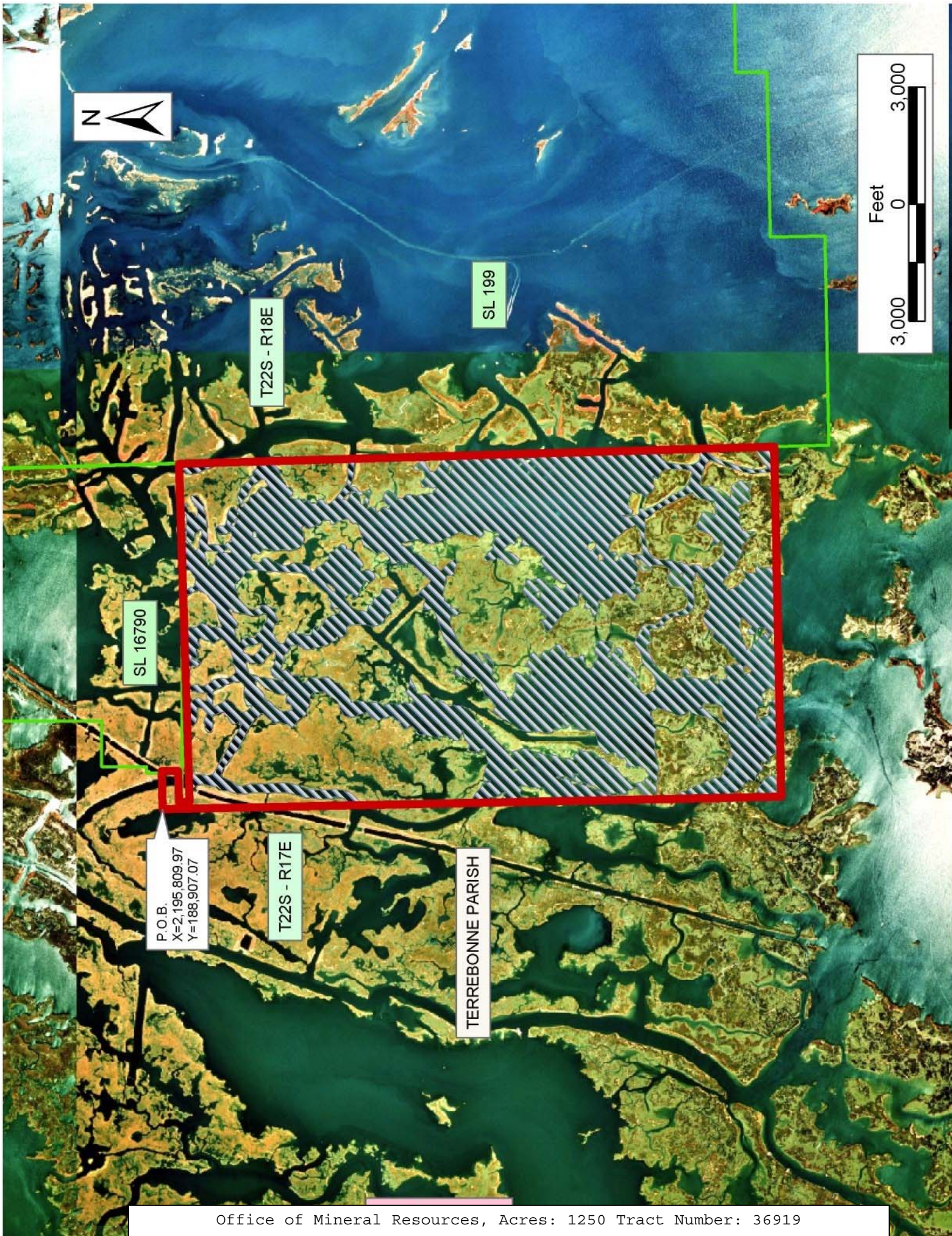
NOTE: The State of Louisiana does hereby reserve, and this lease shall be subject to, the imprescriptible right of surface use in the nature of a

servitude in favor of the Department of Natural Resources, including its Offices and Commissions, for the sole purpose of implementing, constructing, servicing and maintaining approved coastal zone management and/or restoration projects. Utilization of any and all rights derived under this lease by the mineral lessee, its agents, successors or assigns, shall not interfere with nor hinder the reasonable surface use by the Department of Natural Resources, its Offices or Commissions, as herein above reserved.

NOTE: The Department of Wildlife and Fisheries has designated certain areas in the coastal waters of the State of Louisiana as Oyster Seed Bed Areas. The exact location of those Seed Bed Areas must be obtained from the Department of Wildlife and Fisheries and any work done under a mineral lease from the State of Louisiana may necessarily be conducted in conformity with the rules and regulations promulgated by the said Department of Wildlife and Fisheries for Oyster Seed Bed Areas.

Applicant: The Louisiana Land And Exploration Company

Bidder	Cash Payment	Price/Acre	Rental	Oil	Gas	Other



P.O.B.
X=2,195,809.97
Y=188,907.07

T22S - R18E

SL 199

SL 16790

T22S - R17E

TERREBONNE PARISH

TRACT 36920 - Portion of Block 51, West Delta Area, Plaquemines Parish, Louisiana

All of the lands now or formerly constituting the beds and bottoms of all water bodies of every nature and description the title of which vests in the State of Louisiana, together with all islands arising therein and other lands formed by accretion or by reliction, where allowed by law, excepting tax adjudicated lands, and not presently under mineral lease on November 10, 2004, situated in Plaquemines Parish, Louisiana, and more particularly described as follows: Beginning at the Northwest corner of State Lease No. 17932 being a point in Block 51, West Delta Area, having Coordinates of X = 2,615,454.59 and Y = 149,731.16; thence North 00 degrees 01 minutes 58 seconds West 4,964.81 feet to a point on the North line of said Block 51, having Coordinates of X = 2,615,451.75 and Y = 154,695.97; thence North 89 degrees 03 minutes 12 seconds East 5,450.99 feet along the North line of said Block 51 to the Northeast corner of said Block 51, having Coordinates of X = 2,620,902.00 and Y = 154,786.02; thence South 5,054.86 feet along the East line of said Block 51 to the Northeast corner of said State Lease No. 17932 having Coordinates of X = 2,620,902.00 and Y = 149,731.16; thence West 5,447.41 feet along the North line of said State Lease No. 17932 to the point of beginning, **LESS AND EXCEPT** all that portion of State Lease No. 192, as amended, that may lie within the above described tract, containing approximately **626.67 acres**, all as more particularly outlined on a plat on file in the Office of Mineral Resources, Department of Natural Resources. All bearings, distances and coordinates are based on Louisiana Coordinate System of 1927, (North or South Zone), where applicable.

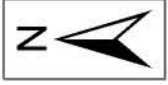
NOTE: The above description of the Tract nominated for lease has been provided and corrected, where required, exclusively by the nomination party. Any mineral lease selected from this Tract and awarded by the Louisiana State Mineral Board shall be without warranty of any kind, either express, implied, or statutory, including, but not limited to, the implied warranties of merchantability and fitness for a particular purpose. Should the mineral lease awarded by the Louisiana State Mineral Board be subsequently modified, cancelled or abrogated due to the existence of conflicting leases, operating agreements, private claims or other future obligations or conditions which may affect all or any portion of the leased Tract, it shall not relieve the Lessee of the obligation to pay any bonus due thereon to the Louisiana State Mineral Board, nor shall the Louisiana State Mineral Board be obligated to refund any consideration paid by the Lessor prior to such modification, cancellation, or abrogation, including, but not limited to, bonuses, rentals and royalties.

NOTE: The State of Louisiana does hereby reserve, and this lease shall be subject to, the imprescriptible right of surface use in the nature of a servitude in favor of the Department of Natural Resources, including its Offices and Commissions, for the sole purpose of implementing, constructing, servicing and maintaining approved coastal zone management and/or restoration projects. Utilization of any and all rights derived

under this lease by the mineral lessee, its agents, successors or assigns, shall not interfere with nor hinder the reasonable surface use by the Department of Natural Resources, its Offices or Commissions, as herein above reserved.

Applicant: Cypress Energy Corporation

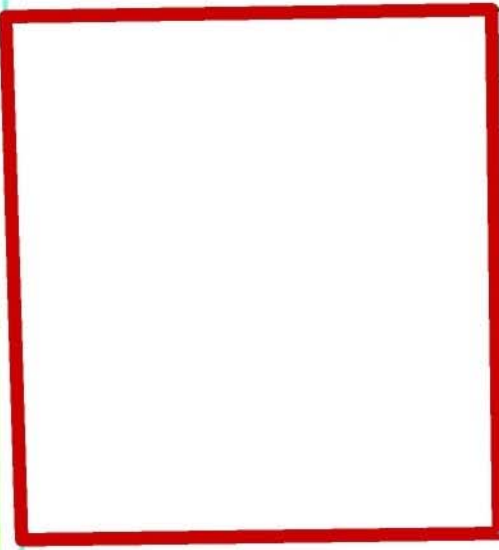
Bidder	Cash Payment	Price/Acre	Rental	Oil	Gas	Other



SL 192

WEST DELTA AREA

BLOCK WD0052



BLOCK WD0051

SL 17932

P.O.B.
X=2,615,454.59
Y=149,731.16

PLAQUEMINES PARISH

BLOCK WD0051

