

TRACT 36901 - Portion of Block 18, Chandeleur Sound Area, St. Bernard Parish, Louisiana

All of the lands now or formerly constituting the beds and bottoms of all water bodies of every nature and description the title of which vests in the State of Louisiana, together with all islands arising therein and other lands formed by accretion or by reliction, where allowed by law, excepting tax adjudicated lands, and not presently under mineral lease on November 10, 2004, situated in St. Bernard Parish, Louisiana, and more particularly described as follows: Beginning at the Southwest corner of Block 18, Chandeleur Sound Area having Coordinates of X = 2,679,600.00 and Y = 440,330.00; thence North 7,375.00 feet along the West line of said Block 18 to a point having Coordinates of X = 2,679,600.00 and Y = 447,705.00; thence East 14,750.00 feet to a point on the East line of said Block 18 having Coordinates of X = 2,694,350.00 and Y = 447,705.00; thence South 7,375.00 feet along the East line of said Block 18 to its Southeast corner having Coordinates of X = 2,694,350.00 and Y = 440,330.00; thence West 14,750.00 feet along the South line of said Block 18 to the point of beginning, containing approximately **2,497.27 acres**, all as more particularly outlined on a plat on file in the Office of Mineral Resources, Department of Natural Resources. All bearings, distances and coordinates are based on Louisiana Coordinate System of 1927, (North or South Zone), where applicable.

NOTE: The above description of the Tract nominated for lease has been provided and corrected, where required, exclusively by the nomination party. Any mineral lease selected from this Tract and awarded by the Louisiana State Mineral Board shall be without warranty of any kind, either express, implied, or statutory, including, but not limited to, the implied warranties of merchantability and fitness for a particular purpose. Should the mineral lease awarded by the Louisiana State Mineral Board be subsequently modified, cancelled or abrogated due to the existence of conflicting leases, operating agreements, private claims or other future obligations or conditions which may affect all or any portion of the leased Tract, it shall not relieve the Lessee of the obligation to pay any bonus due thereon to the Louisiana State Mineral Board, nor shall the Louisiana State Mineral Board be obligated to refund any consideration paid by the Lessor prior to such modification, cancellation, or abrogation, including, but not limited to, bonuses, rentals and royalties.

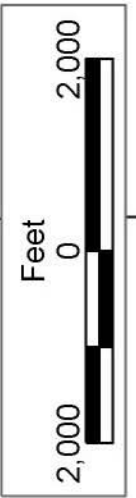
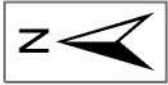
NOTE: The Office of Mineral Resources will require a minimum bonus of \$230 per acre and a minimum royalty of 23%.

NOTE: The State of Louisiana does hereby reserve, and this lease shall be subject to, the imprescriptible right of surface use in the nature of a servitude in favor of the Department of Natural Resources, including its Offices and Commissions, for the sole purpose of implementing, constructing, servicing and maintaining approved coastal zone management and/or restoration projects. Utilization of any and all rights derived under this lease by the mineral lessee, its agents, successors or assigns,

shall not interfere with nor hinder the reasonable surface use by the Department of Natural Resources, its Offices or Commissions, as herein above reserved.

Applicant: Kare-Sue Energy, Inc.

Bidder	Cash Payment	Price/ Acre	Rental	Oil	Gas	Other



ST BERNARD PARISH

CHANDELEUR SOUND AREA

BLOCK CS0018

BLOCK CS0027

P.O.B.
X=2,679,600.00
Y=440,330.00

TRACT 36902 - Portion of Block 47, Chandeleur Sound Area, St. Bernard Parish, Louisiana

All of the lands now or formerly constituting the beds and bottoms of all water bodies of every nature and description the title of which vests in the State of Louisiana, together with all islands arising therein and other lands formed by accretion or by reliction, where allowed by law, excepting tax adjudicated lands, and not presently under mineral lease on November 10, 2004, situated in St. Bernard Parish, Louisiana, and more particularly described as follows: Beginning at a point within Block 47, Chandeleur Sound Area, also being the Southeast corner of State Lease No. 18186 having Coordinates of X = 2,594,877.51 and Y = 399,785.00; thence South 3,705.00 feet to a point on the South line of said Block 47 having Coordinates of X = 2,594,877.51 and Y = 396,080.00; thence West 3,597.49 feet on the South line of said Block 47 to a point on the East line of State Lease No. 18073 having Coordinates of X = 2,591,280.02 and Y = 396,080.00; thence along the boundary of said State Lease No. 18073 the following courses: North 02 degrees 02 minutes 40 seconds West 1,151.18 feet and South 89 degrees 45 minutes 21 seconds West 138.95 feet to a point on the West line of said Block 47 having Coordinates of X = 2,591,100.00 and Y = 397,229.86; thence South 89 degrees 45 minutes 21 seconds West 3,400.03 feet on the North line of said State Lease No. 18073 to the Southeast corner of State Lease No. 18072 having Coordinates of X = 2,587,700.00 and Y = 397,215.38; thence North 1,114.72 feet on the East line of said State Lease No. 18072 to the Southwest corner of State Lease No. 18185 having Coordinates of X = 2,587,700.00 and Y = 398,330.10; thence East 3,400.00 feet on the South line of said State Lease No. 18185 to its Southeast corner and a point on the West line of said Block 47 having Coordinates of X = 2,591,100.00 and Y = 398,330.10; thence North 1,454.90 feet on the East line of said State Lease No. 18185 and the East line of said Block 47 to the Southwest corner of said State Lease No. 18186 having Coordinates of X = 2,591,100.00 and Y = 399,785.00; thence East 3,777.51 feet on the South line of said State Lease No. 18186 to the point of beginning, containing approximately **313 acres**, all as more particularly outlined on a plat on file in the Office of Mineral Resources, Department of Natural Resources. All bearings, distances and coordinates are based on Louisiana Coordinate System of 1927, (North or South Zone), where applicable.

NOTE: The above description of the Tract nominated for lease has been provided and corrected, where required, exclusively by the nomination party. Any mineral lease selected from this Tract and awarded by the Louisiana State Mineral Board shall be without warranty of any kind, either express, implied, or statutory, including, but not limited to, the implied warranties of merchantability and fitness for a particular purpose. Should the mineral lease awarded by the Louisiana State Mineral Board be subsequently modified, cancelled or abrogated due to the existence of conflicting leases, operating agreements, private claims or other future obligations or conditions which may affect all or any portion of the leased Tract, it shall not relieve the Lessee of the obligation to

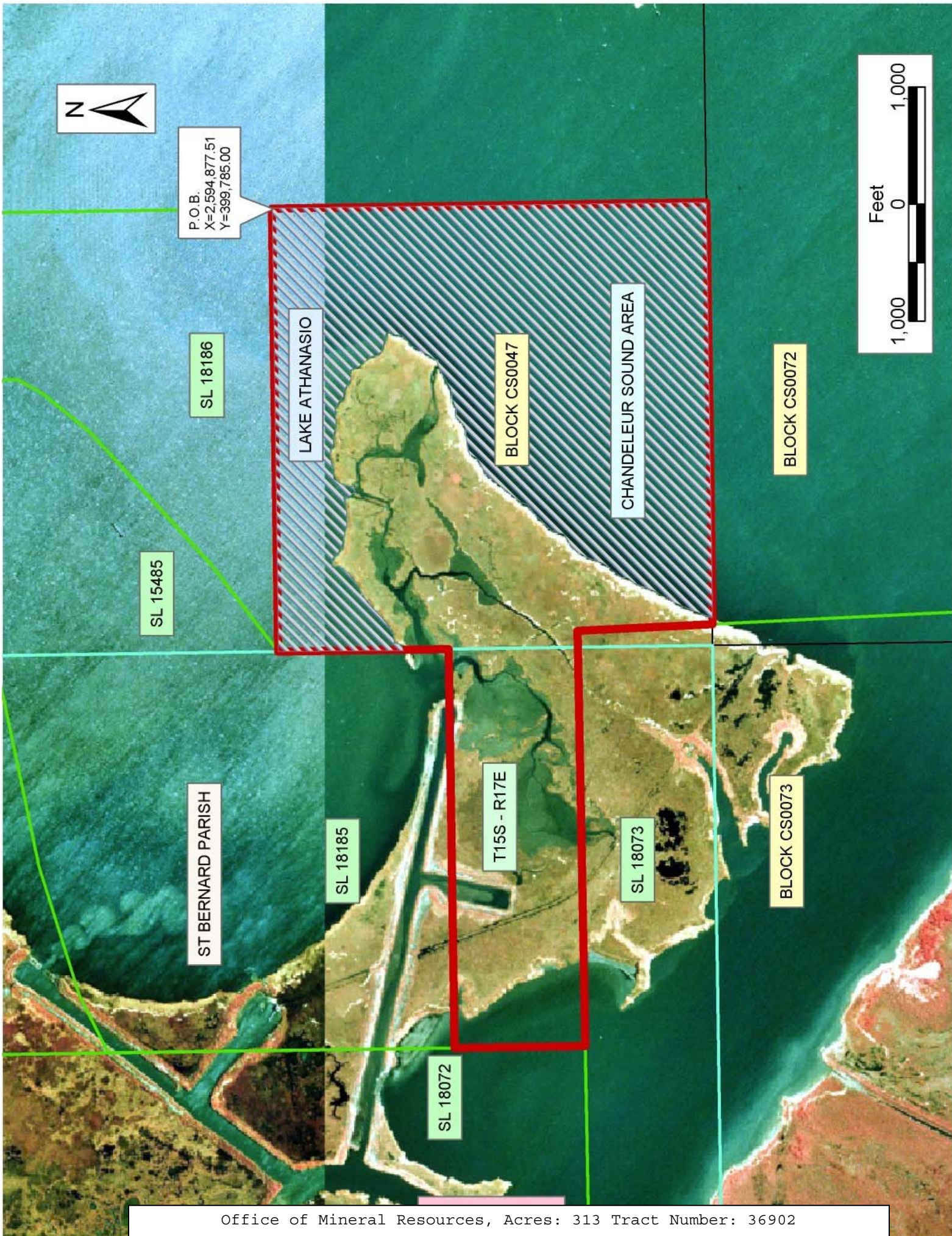
pay any bonus due thereon to the Louisiana State Mineral Board, nor shall the Louisiana State Mineral Board be obligated to refund any consideration paid by the Lessor prior to such modification, cancellation, or abrogation, including, but not limited to, bonuses, rentals and royalties.

NOTE: The State of Louisiana does hereby reserve, and this lease shall be subject to, the imprescriptible right of surface use in the nature of a servitude in favor of the Department of Natural Resources, including its Offices and Commissions, for the sole purpose of implementing, constructing, servicing and maintaining approved coastal zone management and/or restoration projects. Utilization of any and all rights derived under this lease by the mineral lessee, its agents, successors or assigns, shall not interfere with nor hinder the reasonable surface use by the Department of Natural Resources, its Offices or Commissions, as herein above reserved.

NOTE: The Department of Wildlife and Fisheries has designated certain areas in the coastal waters of the State of Louisiana as Oyster Seed Bed Areas. The exact location of those Seed Bed Areas must be obtained from the Department of Wildlife and Fisheries and any work done under a mineral lease from the State of Louisiana may necessarily be conducted in conformity with the rules and regulations promulgated by the said Department of Wildlife and Fisheries for Oyster Seed Bed Areas.

Applicant: Kare-Sue Energy, Inc.

Bidder	Cash Payment	Price/ Acre	Rental	Oil	Gas	Other



TRACT 36903 - St. Martin and St. Mary Parishes, Louisiana

All of the lands now or formerly constituting the beds and bottoms of all water bodies of every nature and description the title of which vests in the State of Louisiana, together with all islands arising therein and other lands formed by accretion or by reliction, where allowed by law, excepting tax adjudicated lands, and not presently under mineral lease on November 10, 2004, situated in St. Martin and St. Mary Parishes, Louisiana, and more particularly described as follows: Beginning at a point having Coordinates of X = 2,057,480.00 and Y = 383,022.00; Thence North 13,723.00 feet to a point having Coordinates of X = 2,057,480.00 and Y = 396,745.00; Thence East 6,605.00 feet to a point having Coordinates of X = 2,064,085.00 and Y = 396,745.00; Thence South 2,315.00 feet to a point on the Northern boundary of State Lease No. 17599, having Coordinates of X = 2,064,085.00 and Y = 394,430.00; Thence along the boundary of State Lease No. 17599 the following courses and distances, to wit: West 401.00 feet to a point having Coordinates of X = 2,063,684.00 and Y = 394,430.00; South 1,435.00 feet to a point having Coordinates of X = 2,063,684.00 and Y = 392,995.00; and South 58 degrees 06 minutes 43 seconds East 780.35 to a point on the North boundary of State Lease No. 17753, having Coordinates of X = 2,064,346.58 and Y = 392,582.77; thence along the boundary of State Lease No. 17753 the following courses and distances to wit: South 32 degrees 20 minutes 51 seconds East 62.46 feet to a point having Coordinates of X = 2,064,380.00 and Y = 392,530.00; South 15 degrees 15 minutes 18 seconds East 114.02 feet to a point having Coordinates of X = 2,064,410.00 and Y = 392,420.00; South 16 degrees 23 minutes 22 seconds West 177.20 feet to a point having Coordinates of X = 2,064,360.00 and Y = 392,250.00; South 45 degrees 00 minutes 00 seconds West 410.12 feet to a point having Coordinates of X = 2,064,070.00 and Y = 391,960.00; South 35 degrees 54 minutes 35 seconds West 358.05 feet to a point having Coordinates of X = 2,063,860.00 and Y = 391,670.00; South 36 degrees 23 minutes 04 seconds West 236.01 feet to a point having Coordinates of X = 2,063,720.00 and Y = 391,480.00; South 25 degrees 01 minutes 01 seconds West 331.06 feet to a point having Coordinates of X = 2,063,580.00 and Y = 391,180.00; South 18 degrees 48 minutes 00 seconds West 496.49 feet to a point having Coordinates of X = 2,063,420.00 and Y = 390,710.00; South 13 degrees 09 minutes 57 seconds West 1,756.16 feet to a point having Coordinates of X = 2,063,020.00 and Y = 389,000.00; South 14 degrees 34 minutes 27 seconds West 516.62 feet to a point having Coordinates of X = 2,062,890.00 and Y = 388,500.00; South 08 degrees 21 minutes 57 seconds West 343.66 feet to a point having Coordinates of X = 2,062,840.00 and Y = 388,160.00; and North 82 degrees 06 minutes 15 seconds East 1,918.19 feet to its Southeast corner, also being a point on the West line of State Lease No. 17599, having Coordinates of X = 2,064,740.00 and Y = 388,423.50; Thence South 309.50 feet along the West line of State Lease No. 17599, to its Southwest corner, having Coordinates of X = 2,064,740.00 and Y = 388,114.00; Thence East 1,930.00 feet along the South line of State Lease No. 17599, to a point having Coordinates of X = 2,066,670.00 and Y = 388,114.00; Thence South 5,092.00 feet to a point having Coordinates of X = 2,066,670.00 and Y = 383,022.00; Thence West 9,190.00

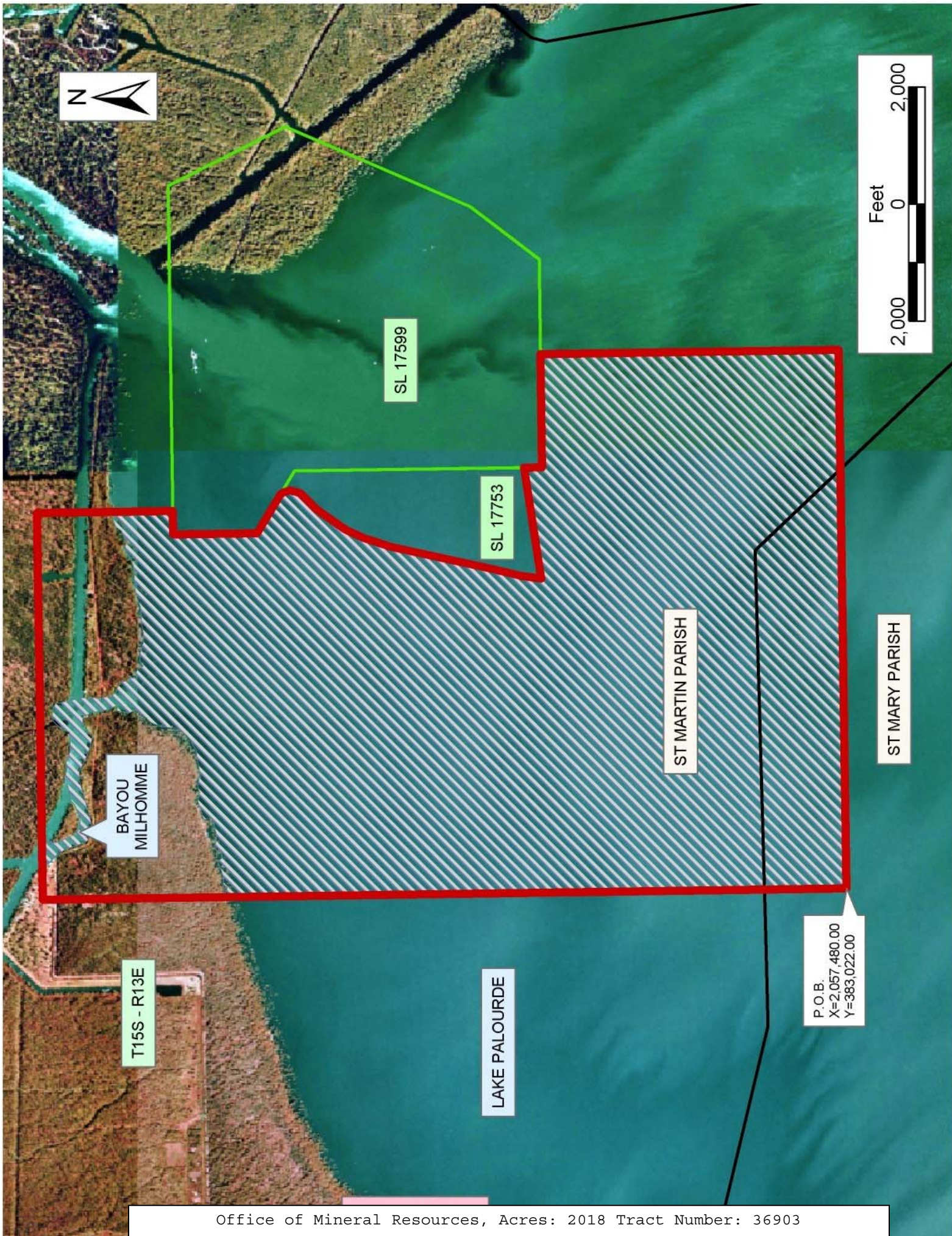
feet to the point of beginning, containing approximately **2,018 acres**, all as more particularly outlined on a plat on file in the Office of Mineral Resources, Department of Natural Resources. All bearings, distances and coordinates are based on Louisiana Coordinate System of 1927, (North or South Zone), where applicable.

NOTE: The above description of the Tract nominated for lease has been provided and corrected, where required, exclusively by the nomination party. Any mineral lease selected from this Tract and awarded by the Louisiana State Mineral Board shall be without warranty of any kind, either express, implied, or statutory, including, but not limited to, the implied warranties of merchantability and fitness for a particular purpose. Should the mineral lease awarded by the Louisiana State Mineral Board be subsequently modified, cancelled or abrogated due to the existence of conflicting leases, operating agreements, private claims or other future obligations or conditions which may affect all or any portion of the leased Tract, it shall not relieve the Lessee of the obligation to pay any bonus due thereon to the Louisiana State Mineral Board, nor shall the Louisiana State Mineral Board be obligated to refund any consideration paid by the Lessor prior to such modification, cancellation, or abrogation, including, but not limited to, bonuses, rentals and royalties.

NOTE: The State of Louisiana does hereby reserve, and this lease shall be subject to, the imprescriptible right of surface use in the nature of a servitude in favor of the Department of Natural Resources, including its Offices and Commissions, for the sole purpose of implementing, constructing, servicing and maintaining approved coastal zone management and/or restoration projects. Utilization of any and all rights derived under this lease by the mineral lessee, its agents, successors or assigns, shall not interfere with nor hinder the reasonable surface use by the Department of Natural Resources, its Offices or Commissions, as herein above reserved.

Applicant: W.B. Crews

Bidder	Cash Payment	Price/Acre	Rental	Oil	Gas	Other



TRACT 36904 - Vermilion Parish, Louisiana

All of the lands now or formerly constituting the beds and bottoms of all water bodies of every nature and description the title of which vests in the State of Louisiana, together with all islands arising therein and other lands formed by accretion or by reliction, where allowed by law, excepting tax adjudicated lands, and not presently under mineral lease on November 10, 2004, situated in Vermilion Parish, Louisiana, and more particularly described as follows: Beginning at the Northwest corner of State Lease No. 18074 having Coordinates of X = 1,729,430.00 and Y = 393,900.00; thence along the boundary of said State Lease No. 18074 the following courses: South 1,200.00 feet, South 46 degrees 45 minutes 59 seconds East 1,605.89 feet, South 2,140.00 feet and East 2,576.00 feet to the most Southerly Southeast corner of said State Lease No. 18074, also being a point on the West line of State Lease No. 17832 having Coordinates of X = 1,733,176.00 and Y = 389,460.00; thence South along the West line of said State Lease No. 17832 a distance of 1,407.00 feet to the Southwest corner of said State Lease No. 17832 also being the Northwest corner of State Lease No. 17827 having Coordinates of X = 1,733,176.00 and Y = 388,053.00; thence South along the West line of said State Lease No. 17827 a distance of 2,061.10 feet to the Southwest corner of said State Lease No. 17827 having Coordinates of X = 1,733,176.00 and Y = 385,991.90; thence South 89 degrees 31 minutes 39 seconds East along the South line of said State Lease No. 17827 a distance of 4,000.00 feet to a point having Coordinates of X = 1,737,175.86 and Y = 385,958.92; thence South 3,000.00 feet to a point having Coordinates of X = 1,737,175.86 and Y = 382,958.92; thence West 9,000.00 feet to a point having Coordinates of X = 1,728,175.86 and Y = 382,958.92; thence North 50 degrees 16 minutes 26 seconds West 4,745.57 feet to a point having Coordinates of X = 1,724,526.00 and Y = 385,991.90; thence West 1,850.00 feet to a point having Coordinates of X = 1,722,676.00 and Y = 385,991.90; thence North 12,000.00 feet to a point having Coordinates of X = 1,722,676.00 and Y = 397,991.90; thence East 6,754.00 feet to a point having Coordinates of X = 1,729,430.00 and Y = 397,991.90; thence South 4,091.90 feet to the point of beginning, containing approximately **2,380 acres**, all as more particularly outlined on a plat on file in the Office of Mineral Resources, Department of Natural Resources. All bearings, distances and coordinates are based on Louisiana Coordinate System of 1927, (North or South Zone), where applicable.

NOTE: The above description of the Tract nominated for lease has been provided and corrected, where required, exclusively by the nomination party. Any mineral lease selected from this Tract and awarded by the Louisiana State Mineral Board shall be without warranty of any kind, either express, implied, or statutory, including, but not limited to, the implied warranties of merchantability and fitness for a particular purpose. Should the mineral lease awarded by the Louisiana State Mineral Board be subsequently modified, cancelled or abrogated due to the existence of conflicting leases, operating agreements, private claims or other future obligations or conditions which may affect all or any portion

of the leased Tract, it shall not relieve the Lessee of the obligation to pay any bonus due thereon to the Louisiana State Mineral Board, nor shall the Louisiana State Mineral Board be obligated to refund any consideration paid by the Lessor prior to such modification, cancellation, or abrogation, including, but not limited to, bonuses, rentals and royalties.

NOTE: The State of Louisiana does hereby reserve, and this lease shall be subject to, the imprescriptible right of surface use in the nature of a servitude in favor of the Department of Natural Resources, including its Offices and Commissions, for the sole purpose of implementing, constructing, servicing and maintaining approved coastal zone management and/or restoration projects. Utilization of any and all rights derived under this lease by the mineral lessee, its agents, successors or assigns, shall not interfere with nor hinder the reasonable surface use by the Department of Natural Resources, its Offices or Commissions, as herein above reserved.

NOTE: The Department of Wildlife and Fisheries has designated certain areas in the coastal waters of the State of Louisiana as Oyster Seed Bed Areas. The exact location of those Seed Bed Areas must be obtained from the Department of Wildlife and Fisheries and any work done under a mineral lease from the State of Louisiana may necessarily be conducted in conformity with the rules and regulations promulgated by the said Department of Wildlife and Fisheries for Oyster Seed Bed Areas.

Applicant: Taylex, Inc.

Bidder	Cash Payment	Price/ Acre	Rental	Oil	Gas	Other



VERMILION PARISH

T15S - R3E

P.O.B.
X=1,729,430.00
Y=393,900.00

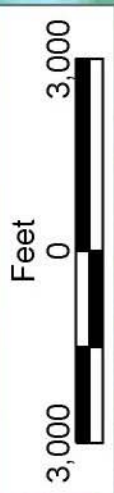
SL 18074

SL 17832

SL 17827

VERMILION BAY

T15S - R2E



TRACT 36905 - Vermilion Parish, Louisiana

All of the lands now or formerly constituting the beds and bottoms of all water bodies of every nature and description the title of which vests in the State of Louisiana, together with all islands arising therein and other lands formed by accretion or by reliction, where allowed by law, excepting tax adjudicated lands, and not presently under mineral lease on November 10, 2004, situated in Vermilion Parish, Louisiana, and more particularly described as follows: Beginning at a point having Coordinates of X = 1,767,500.00 and Y = 378,100.00; thence North 7,400.00 feet to a point having Coordinates of X = 1,767,500.00 and Y = 385,500.00; thence East 14,700.00 feet to a point having Coordinates of X = 1,782,200.00 and Y = 385,500.00; thence South 7,400.00 feet to a point having Coordinates of X = 1,782,200.00 and Y = 378,100.00; thence West 14,700.00 feet to the point of beginning, containing approximately **2,497.25 acres**, all as more particularly outlined on a plat on file in the Office of Mineral Resources, Department of Natural Resources. All bearings, distances and coordinates are based on Louisiana Coordinate System of 1927, (North or South Zone), where applicable.

NOTE: The above description of the Tract nominated for lease has been provided and corrected, where required, exclusively by the nomination party. Any mineral lease selected from this Tract and awarded by the Louisiana State Mineral Board shall be without warranty of any kind, either express, implied, or statutory, including, but not limited to, the implied warranties of merchantability and fitness for a particular purpose. Should the mineral lease awarded by the Louisiana State Mineral Board be subsequently modified, cancelled or abrogated due to the existence of conflicting leases, operating agreements, private claims or other future obligations or conditions which may affect all or any portion of the leased Tract, it shall not relieve the Lessee of the obligation to pay any bonus due thereon to the Louisiana State Mineral Board, nor shall the Louisiana State Mineral Board be obligated to refund any consideration paid by the Lessor prior to such modification, cancellation, or abrogation, including, but not limited to, bonuses, rentals and royalties.

NOTE: The State of Louisiana does hereby reserve, and this lease shall be subject to, the imprescriptible right of surface use in the nature of a servitude in favor of the Department of Natural Resources, including its Offices and Commissions, for the sole purpose of implementing, constructing, servicing and maintaining approved coastal zone management and/or restoration projects. Utilization of any and all rights derived under this lease by the mineral lessee, its agents, successors or assigns, shall not interfere with nor hinder the reasonable surface use by the Department of Natural Resources, its Offices or Commissions, as herein above reserved.

NOTE: The Department of Wildlife and Fisheries has designated certain areas in the coastal waters of the State of Louisiana as Oyster Seed Bed Areas. The exact location of those Seed Bed Areas must be obtained from

the Department of Wildlife and Fisheries and any work done under a mineral lease from the State of Louisiana may necessarily be conducted in conformity with the rules and regulations promulgated by the said Department of Wildlife and Fisheries for Oyster Seed Bed Areas.

Applicant: Saur Minerals, L.L.C.

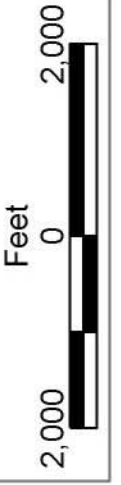
Bidder	Cash Payment	Price/ Acre	Rental	Oil	Gas	Other



VERMILION PARISH

VERMILION BAY

P.O.B.
X=1,767,500.00
Y=378,100.00



TRACT 36906 - Vermilion Parish, Louisiana

All of the lands now or formerly constituting the beds and bottoms of all water bodies of every nature and description the title of which vests in the State of Louisiana, together with all islands arising therein and other lands formed by accretion or by reliction, where allowed by law, excepting tax adjudicated lands, and not presently under mineral lease on November 10, 2004, situated in Vermilion Parish, Louisiana, and more particularly described as follows: Beginning at a point having Coordinates of X = 1,767,500.00 and Y = 378,100.00; thence West 11,500.00 feet to a point having Coordinates of X = 1,756,000.00 and Y = 378,100.00; thence North 7,400.00 feet to a point having Coordinates of X = 1,756,000.00 and Y = 385,500.00; thence East 11,500.00 feet to a point having Coordinates of X = 1,767,500.00 and Y = 385,500.00; thence South 7,400.00 feet to the point of beginning, containing approximately **1,953.63 acres**, all as more particularly outlined on a plat on file in the Office of Mineral Resources, Department of Natural Resources. All bearings, distances and coordinates are based on Louisiana Coordinate System of 1927, (North or South Zone), where applicable.

NOTE: The above description of the Tract nominated for lease has been provided and corrected, where required, exclusively by the nomination party. Any mineral lease selected from this Tract and awarded by the Louisiana State Mineral Board shall be without warranty of any kind, either express, implied, or statutory, including, but not limited to, the implied warranties of merchantability and fitness for a particular purpose. Should the mineral lease awarded by the Louisiana State Mineral Board be subsequently modified, cancelled or abrogated due to the existence of conflicting leases, operating agreements, private claims or other future obligations or conditions which may affect all or any portion of the leased Tract, it shall not relieve the Lessee of the obligation to pay any bonus due thereon to the Louisiana State Mineral Board, nor shall the Louisiana State Mineral Board be obligated to refund any consideration paid by the Lessor prior to such modification, cancellation, or abrogation, including, but not limited to, bonuses, rentals and royalties.

NOTE: The State of Louisiana does hereby reserve, and this lease shall be subject to, the imprescriptible right of surface use in the nature of a servitude in favor of the Department of Natural Resources, including its Offices and Commissions, for the sole purpose of implementing, constructing, servicing and maintaining approved coastal zone management and/or restoration projects. Utilization of any and all rights derived under this lease by the mineral lessee, its agents, successors or assigns, shall not interfere with nor hinder the reasonable surface use by the Department of Natural Resources, its Offices or Commissions, as herein above reserved.

NOTE: The Department of Wildlife and Fisheries has designated certain areas in the coastal waters of the State of Louisiana as Oyster Seed Bed Areas. The exact location of those Seed Bed Areas must be obtained from

the Department of Wildlife and Fisheries and any work done under a mineral lease from the State of Louisiana may necessarily be conducted in conformity with the rules and regulations promulgated by the said Department of Wildlife and Fisheries for Oyster Seed Bed Areas.

Applicant: Saur Minerals, L.L.C.

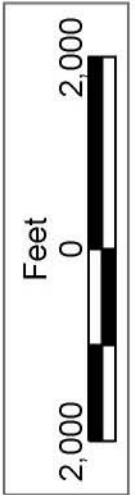
Bidder	Cash Payment	Price/ Acre	Rental	Oil	Gas	Other



VERMILION PARISH

VERMILION BAY

P.O.B.
X=1,767,500.00
Y=378,100.00



TRACT 36907 - Vermilion Parish, Louisiana

All of the lands now or formerly constituting the beds and bottoms of all water bodies of every nature and description the title of which vests in the State of Louisiana, together with all islands arising therein and other lands formed by accretion or by reliction, where allowed by law, excepting tax adjudicated lands, and not presently under mineral lease on November 10, 2004, situated in Vermilion Parish, Louisiana, and more particularly described as follows: Beginning at a point having Coordinates of X = 1,767,500.00 and Y = 378,100.00; thence South 2,840.80 feet to a point on the Northern boundary of State Lease No. 4011, as amended, having Coordinates of X = 1,767,500.00 and Y = 375,259.20; thence along the boundary of said State Lease No. 4011, as amended, the following courses: West 668.68 feet to a point having Coordinates of X = 1,766,831.32 and Y = 375,259.20; South 501.51 feet to a point having Coordinates of X = 1,766,831.32 and Y = 374,757.69; West 721.75 feet to a point having Coordinates of X = 1,766,109.57 and Y = 374,757.69; South 4,256.59 feet to a point having Coordinates of X = 1,766,109.57 and Y = 370,501.10; West 5,812.65 feet to a point having Coordinates of X = 1,760,296.92 and Y = 370,501.10; and South 5,187.25 feet to its Southwest corner having Coordinates of X = 1,760,296.92 and Y = 365,313.85; thence West 4,296.92 feet to a point having Coordinates of X = 1,756,000.00 and Y = 365,313.85; thence North 12,786.15 feet to a point having Coordinates of X = 1,756,000.00 and Y = 378,100.00; thence East 11,500.00 feet to the point of beginning, containing approximately **2,374.26 acres**, all as more particularly outlined on a plat on file in the Office of Mineral Resources, Department of Natural Resources. All bearings, distances and coordinates are based on Louisiana Coordinate System of 1927, (North or South Zone), where applicable.

NOTE: The above description of the Tract nominated for lease has been provided and corrected, where required, exclusively by the nomination party. Any mineral lease selected from this Tract and awarded by the Louisiana State Mineral Board shall be without warranty of any kind, either express, implied, or statutory, including, but not limited to, the implied warranties of merchantability and fitness for a particular purpose. Should the mineral lease awarded by the Louisiana State Mineral Board be subsequently modified, cancelled or abrogated due to the existence of conflicting leases, operating agreements, private claims or other future obligations or conditions which may affect all or any portion of the leased Tract, it shall not relieve the Lessee of the obligation to pay any bonus due thereon to the Louisiana State Mineral Board, nor shall the Louisiana State Mineral Board be obligated to refund any consideration paid by the Lessor prior to such modification, cancellation, or abrogation, including, but not limited to, bonuses, rentals and royalties.

NOTE: The State of Louisiana does hereby reserve, and this lease shall be subject to, the imprescriptible right of surface use in the nature of a servitude in favor of the Department of Natural Resources, including its Offices and Commissions, for the sole purpose of implementing,

constructing, servicing and maintaining approved coastal zone management and/or restoration projects. Utilization of any and all rights derived under this lease by the mineral lessee, its agents, successors or assigns, shall not interfere with nor hinder the reasonable surface use by the Department of Natural Resources, its Offices or Commissions, as herein above reserved.

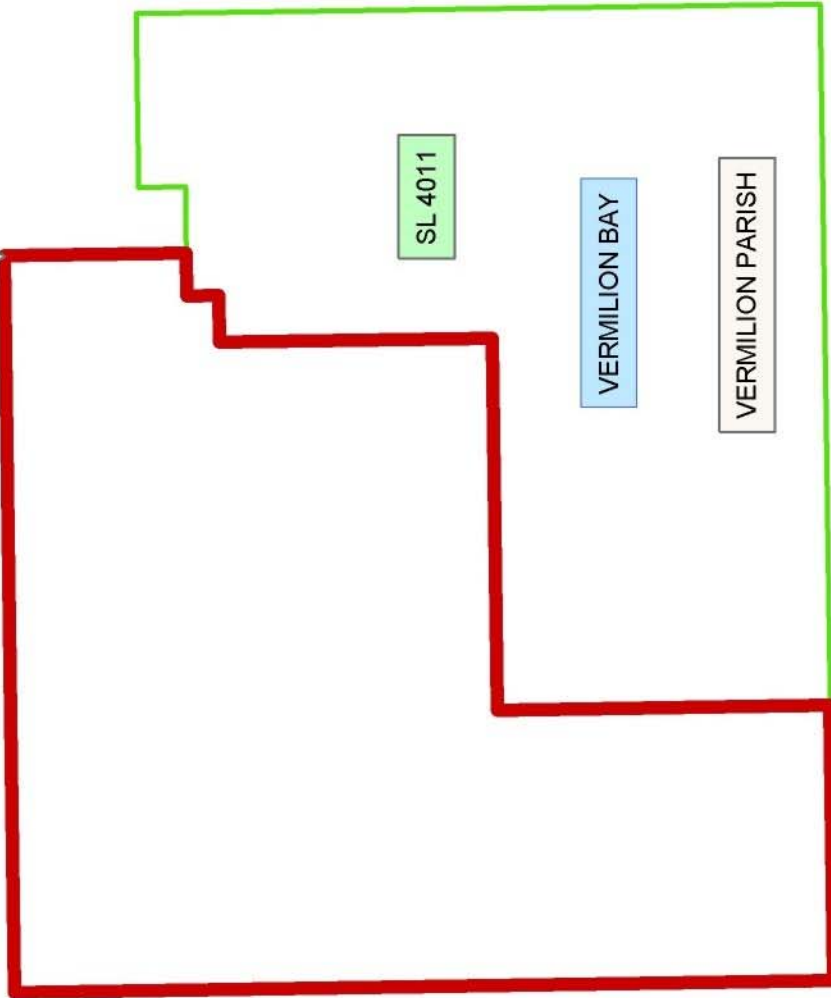
NOTE: The Department of Wildlife and Fisheries has designated certain areas in the coastal waters of the State of Louisiana as Oyster Seed Bed Areas. The exact location of those Seed Bed Areas must be obtained from the Department of Wildlife and Fisheries and any work done under a mineral lease from the State of Louisiana may necessarily be conducted in conformity with the rules and regulations promulgated by the said Department of Wildlife and Fisheries for Oyster Seed Bed Areas.

Applicant: Saur Minerals, L.L.C.

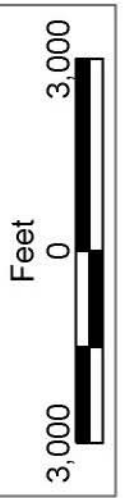
Bidder	Cash Payment	Price/ Acre	Rental	Oil	Gas	Other



P.O.B.
X=1,767,500.00
Y=378,100.00



T15S - R3E



TRACT 36908 - Vermilion Parish, Louisiana

All of the lands now or formerly constituting the beds and bottoms of all water bodies of every nature and description the title of which vests in the State of Louisiana, together with all islands arising therein and other lands formed by accretion or by reliction, where allowed by law, excepting tax adjudicated lands, and not presently under mineral lease on November 10, 2004, situated in Vermilion Parish, Louisiana, and more particularly described as follows: Beginning at a point having Coordinates of X = 1,767,500.00 and Y = 378,100.00; thence East 14,700.00 feet to a point having Coordinates of X = 1,782,200.00 and Y = 378,100.00; thence South 875.00 feet to a point on the North line of Geophysical Agreement No. 20031001 having Coordinates of X = 1,782,200.00 and Y = 377,225.00; thence West 8,684.00 feet along the North line of said Geophysical Agreement No. 20031001 to its Northwest corner having Coordinates of X = 1,773,516.00 and Y = 377,225.00; thence South 587.73 feet along the West line of said Geophysical Agreement No. 20031001 to a point on the North line of State Lease No. 17751, as amended, having Coordinates of X = 1,773,516.00 and Y = 376,637.27; thence along the boundary of said State Lease No. 17751, as amended, the following courses: North 82 degrees 08 minutes 27 seconds West 56.53 feet to a point having Coordinates of X = 1,773,460.00 and Y = 376,645.00; and South 40 degrees 00 minutes 49 seconds West 504.31 feet to a point on the North line of State Lease No. 3306, as amended, having Coordinates of X = 1,773,135.74 and Y = 376,258.75; thence West 1,893.92 feet along the North line of said State Lease No. 3306, as amended, to its Northwest corner having Coordinates of X = 1,771,241.82 and Y = 376,258.75; thence South 274.55 feet along the West line of said State Lease No. 3306, as amended, to the Northeast corner of State Lease No. 4011, as amended, having Coordinates of X = 1,771,241.82 and Y = 375,984.20; thence along the Northern boundary of said State Lease No. 4011, as amended, the following courses: West 2,710.50 feet to a point having Coordinates of X = 1,768,531.32 and Y = 375,984.20; South 725.00 feet to a point having Coordinates of X = 1,768,531.32 and Y = 375,259.20; and West 1,031.32 feet to a point having Coordinates of X = 1,767,500.00 and Y = 375,259.20; thence North 2,840.80 feet to the point of beginning, containing approximately **467.55 acres**, all as more particularly outlined on a plat on file in the Office of Mineral Resources, Department of Natural Resources. All bearings, distances and coordinates are based on Louisiana Coordinate System of 1927, (North or South Zone), where applicable.

NOTE: The above description of the Tract nominated for lease has been provided and corrected, where required, exclusively by the nomination party. Any mineral lease selected from this Tract and awarded by the Louisiana State Mineral Board shall be without warranty of any kind, either express, implied, or statutory, including, but not limited to, the implied warranties of merchantability and fitness for a particular purpose. Should the mineral lease awarded by the Louisiana State Mineral Board be subsequently modified, cancelled or abrogated due to the existence of conflicting leases, operating agreements, private claims or

other future obligations or conditions which may affect all or any portion of the leased Tract, it shall not relieve the Lessee of the obligation to pay any bonus due thereon to the Louisiana State Mineral Board, nor shall the Louisiana State Mineral Board be obligated to refund any consideration paid by the Lessor prior to such modification, cancellation, or abrogation, including, but not limited to, bonuses, rentals and royalties.

NOTE: The State of Louisiana does hereby reserve, and this lease shall be subject to, the imprescriptible right of surface use in the nature of a servitude in favor of the Department of Natural Resources, including its Offices and Commissions, for the sole purpose of implementing, constructing, servicing and maintaining approved coastal zone management and/or restoration projects. Utilization of any and all rights derived under this lease by the mineral lessee, its agents, successors or assigns, shall not interfere with nor hinder the reasonable surface use by the Department of Natural Resources, its Offices or Commissions, as herein above reserved.

NOTE: The Department of Wildlife and Fisheries has designated certain areas in the coastal waters of the State of Louisiana as Oyster Seed Bed Areas. The exact location of those Seed Bed Areas must be obtained from the Department of Wildlife and Fisheries and any work done under a mineral lease from the State of Louisiana may necessarily be conducted in conformity with the rules and regulations promulgated by the said Department of Wildlife and Fisheries for Oyster Seed Bed Areas.

Applicant: Saur Minerals, L.L.C.

Bidder	Cash Payment	Price/ Acre	Rental	Oil	Gas	Other



VERMILION BAY

VERMILION PARISH

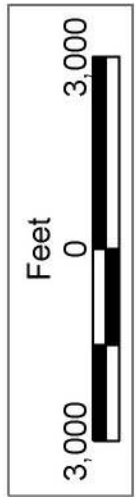
P.O.B.
X=1,767,500.00
Y=378,100.00

SL 17751

SL 3306

SL 4011

GEO 20031001



TRACT 36909 - Assumption and Terrebonne Parishes, Louisiana

All of the lands now or formerly constituting the beds and bottoms of all water bodies of every nature and description the title of which vests in the State of Louisiana, together with all islands arising therein and other lands formed by accretion or by reliction, where allowed by law, excepting tax adjudicated lands, and not presently under mineral lease on November 10, 2004, situated in Assumption and Terrebonne Parishes, Louisiana, and more particularly described as follows: Beginning at a point having Coordinates of X = 2,080,194.75 and Y = 354,380.43; thence North 89 degrees 26 minutes 54 seconds East 1,582.84 feet to a point having Coordinates of X = 2,081,777.52 and Y = 354,395.66; thence North 48 degrees 51 minutes 26 seconds East 1,051.84 feet to a point having Coordinates of X = 2,082,569.64 and Y = 355,087.71; thence South 86 degrees 46 minutes 47 seconds East 9,475.43 feet to a point having Coordinates of X = 2,092,030.10 and Y = 354,555.45; thence North 88 degrees 43 minutes 25 seconds East 8,513.62 feet to a point having Coordinates of X = 2,100,541.61 and Y = 354,745.10; thence South 55 degrees 58 minutes 37 seconds West 1,961.09 feet to a point having Coordinates of X = 2,098,916.24 and Y = 353,647.82; thence South 56 degrees 44 minutes 18 seconds West 1,842.24 feet to a point having Coordinates of X = 2,097,375.80 and Y = 352,637.42; thence South 46 degrees 00 minutes 54 seconds West 1,203.13 feet to a point having Coordinates of X = 2,096,510.12 and Y = 351,801.89; thence South 13 degrees 56 minutes 22 seconds West 983.57 feet to a point having Coordinates of X = 2,096,273.19 and Y = 350,847.28; thence South 01 degree 20 minutes 49 seconds East 752.48 feet to a point having Coordinates of X = 2,096,290.88 and Y = 350,095.01; thence South 08 degrees 45 minutes 58 seconds East 830.03 feet to a point having Coordinates of X = 2,096,417.37 and Y = 349,274.67; thence South 00 degrees 16 minutes 51 seconds East 5,281.55 feet to a point having Coordinates of X = 2,096,443.27 and Y = 343,993.19; thence South 88 degrees 51 minutes 32 seconds West 15,978.58 feet to a point having Coordinates of X = 2,080,467.86 and Y = 343,674.94; thence North 01 degree 27 minutes 41 seconds West 5,453.69 feet to a point on the South line of State Lease No. 16051 having Coordinates of X = 2,080,328.77 and Y = 349,126.86; thence along the boundary of said State Lease No. 16051 the following courses: North 89 degrees 28 minutes 07 seconds East 113.63 feet to a point having Coordinates of X = 2,080,442.40 and Y = 349,127.91; North 88 degrees 07 minutes 55 seconds East 1,857.96 feet to a point having Coordinates of X = 2,082,299.37 and Y = 349,188.48; North 88 degrees 07 minutes 54 seconds East 821.01 feet to a point having Coordinates of X = 2,083,119.94 and Y = 349,215.24; North 89 degrees 06 minutes 22 seconds East 2,640.00 feet to a point having Coordinates of X = 2,085,759.62 and Y = 349,256.43; North 89 degrees 06 minutes 22 seconds East 140.40 feet to the Southeast corner of State Lease No. 16051 having Coordinates of X = 2,085,900.00 and Y = 349,258.62; thence North 3,141.38 feet to a point being the Northeast corner of State Lease No. 16051 having Coordinates of X = 2,085,900.00 and Y = 352,400.00; thence along the boundary of State Lease No. 16051 the following courses: West 3,642.66 feet to a point having Coordinates of X = 2,082,257.34 and Y = 352,400.00;

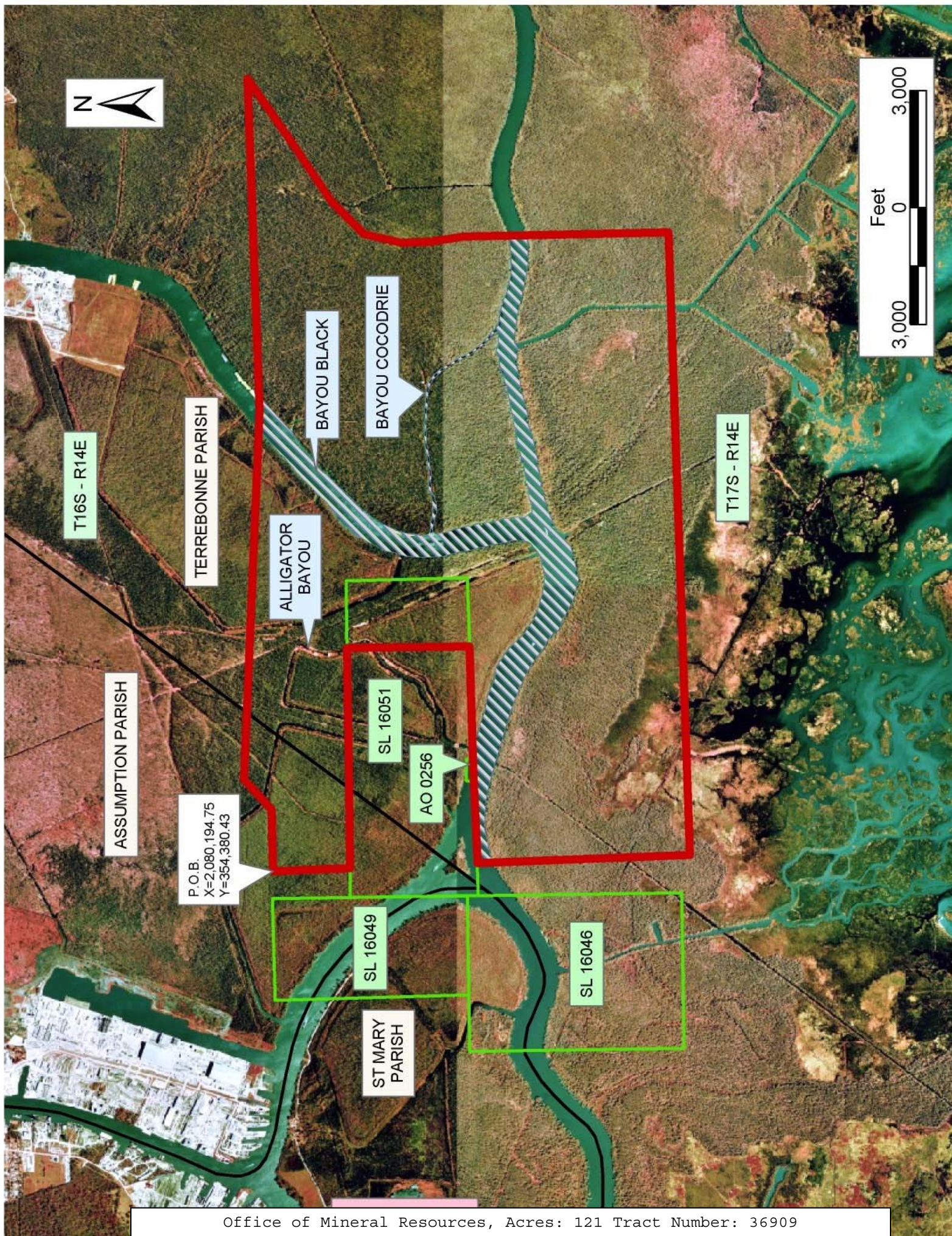
West 2,012.06 feet to a point having Coordinates of X = 2,080,245.27 and Y = 352,400.00; thence North 01 degree 27 minutes 41 seconds West 1,981.07 feet to the point of beginning, **LESS AND EXCEPT** that portion ,if any, which may lie within Operating Agreement 0256, containing approximately **121 acres**, all as more particularly outlined on a plat on file in the Office of Mineral Resources, Department of Natural Resources. All bearings, distances and coordinates are based on Louisiana Coordinate System of 1927, (North or South Zone), where applicable.

NOTE: The above description of the Tract nominated for lease has been provided and corrected, where required, exclusively by the nomination party. Any mineral lease selected from this Tract and awarded by the Louisiana State Mineral Board shall be without warranty of any kind, either express, implied, or statutory, including, but not limited to, the implied warranties of merchantability and fitness for a particular purpose. Should the mineral lease awarded by the Louisiana State Mineral Board be subsequently modified, cancelled or abrogated due to the existence of conflicting leases, operating agreements, private claims or other future obligations or conditions which may affect all or any portion of the leased Tract, it shall not relieve the Lessee of the obligation to pay any bonus due thereon to the Louisiana State Mineral Board, nor shall the Louisiana State Mineral Board be obligated to refund any consideration paid by the Lessor prior to such modification, cancellation, or abrogation, including, but not limited to, bonuses, rentals and royalties.

NOTE: The State of Louisiana does hereby reserve, and this lease shall be subject to, the imprescriptible right of surface use in the nature of a servitude in favor of the Department of Natural Resources, including its Offices and Commissions, for the sole purpose of implementing, constructing, servicing and maintaining approved coastal zone management and/or restoration projects. Utilization of any and all rights derived under this lease by the mineral lessee, its agents, successors or assigns, shall not interfere with nor hinder the reasonable surface use by the Department of Natural Resources, its Offices or Commissions, as herein above reserved.

Applicant: Acadian Land Services, L.L.C.

Bidder	Cash Payment	Price/ Acre	Rental	Oil	Gas	Other



TRACT 36910 - Terrebonne Parish, Louisiana

All of the lands now or formerly constituting the beds and bottoms of all water bodies of every nature and description the title of which vests in the State of Louisiana, together with all islands arising therein and other lands formed by accretion or by reliction, where allowed by law, excepting tax adjudicated lands, and not presently under mineral lease on November 10, 2004, situated in Terrebonne Parish, Louisiana, and more particularly described as follows: Beginning at a point having Coordinates of X = 2,119,000.00 and Y = 329,200.00; thence North 7,000.00 feet to a point having Coordinates of X = 2,119,000.00 and Y = 336,200.00; thence East 10,000.00 feet to a point having Coordinates of X = 2,129,000.00 and Y = 336,200.00; thence South 7,000.00 feet to a point having Coordinates of X = 2,129,000.00 and Y = 329,200.00; thence West 10,000.00 feet to the point of beginning, containing approximately **304 acres**, all as more particularly outlined on a plat on file in the Office of Mineral Resources, Department of Natural Resources. All bearings, distances and coordinates are based on Louisiana Coordinate System of 1927, (North or South Zone), where applicable.

NOTE: The above description of the Tract nominated for lease has been provided and corrected, where required, exclusively by the nomination party. Any mineral lease selected from this Tract and awarded by the Louisiana State Mineral Board shall be without warranty of any kind, either express, implied, or statutory, including, but not limited to, the implied warranties of merchantability and fitness for a particular purpose. Should the mineral lease awarded by the Louisiana State Mineral Board be subsequently modified, cancelled or abrogated due to the existence of conflicting leases, operating agreements, private claims or other future obligations or conditions which may affect all or any portion of the leased Tract, it shall not relieve the Lessee of the obligation to pay any bonus due thereon to the Louisiana State Mineral Board, nor shall the Louisiana State Mineral Board be obligated to refund any consideration paid by the Lessor prior to such modification, cancellation, or abrogation, including, but not limited to, bonuses, rentals and royalties.

NOTE: The State of Louisiana does hereby reserve, and this lease shall be subject to, the imprescriptible right of surface use in the nature of a servitude in favor of the Department of Natural Resources, including its Offices and Commissions, for the sole purpose of implementing, constructing, servicing and maintaining approved coastal zone management and/or restoration projects. Utilization of any and all rights derived under this lease by the mineral lessee, its agents, successors or assigns, shall not interfere with nor hinder the reasonable surface use by the Department of Natural Resources, its Offices or Commissions, as herein above reserved.

Applicant: Saur Minerals, L.L.C.

Bidder	Cash Payment	Price/ Acre	Rental	Oil	Gas	Other

