

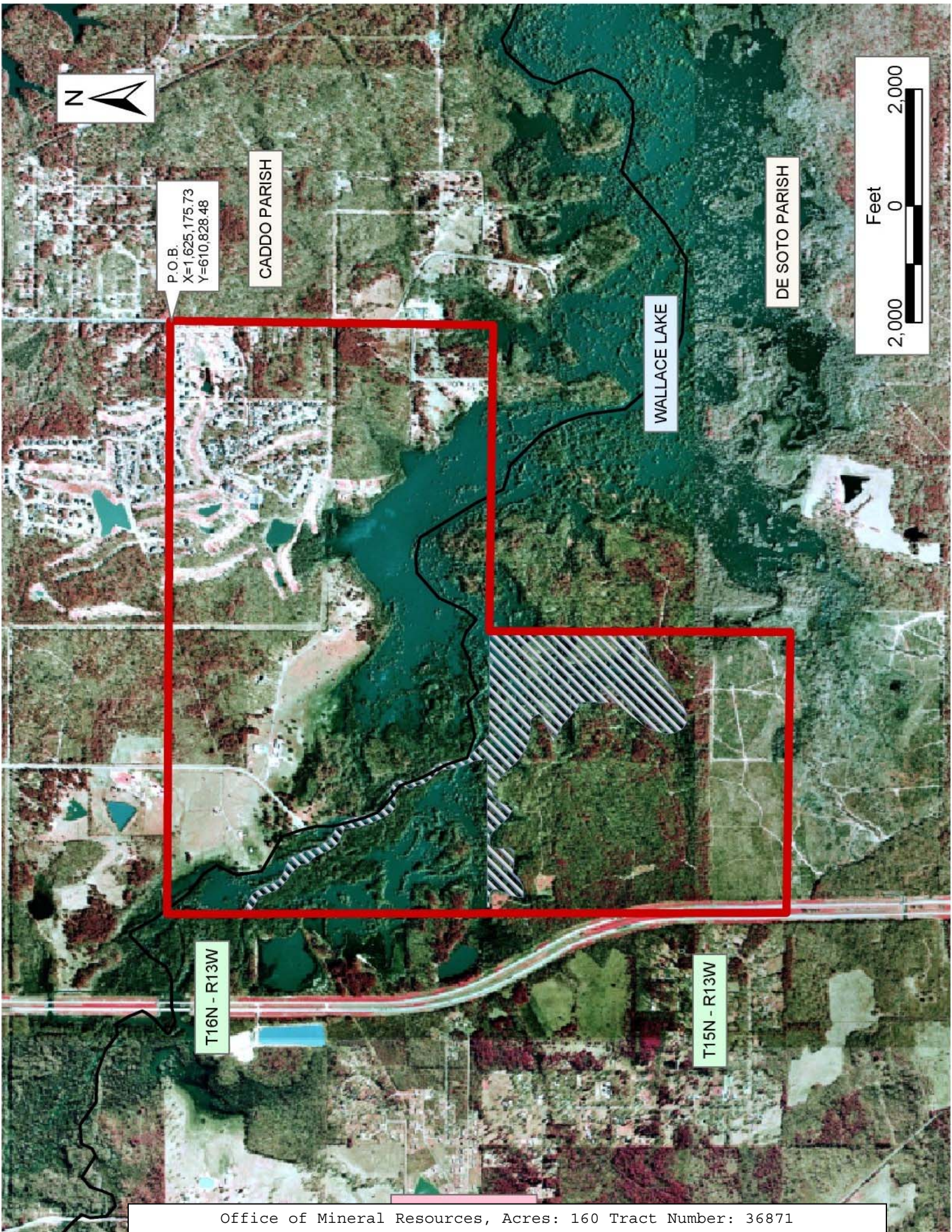
**TRACT 36871 - Caddo and De Soto Parishes, Louisiana**

All of the lands now or formerly constituting the beds and bottoms of all water bodies of every nature and description the title of which vests in the State of Louisiana, together with all islands arising therein and other lands formed by accretion or by reliction, where allowed by law, excepting tax adjudicated lands, and not presently under mineral lease on November 10, 2004, situated in Caddo and De Soto Parishes, Louisiana, and more particularly described as follows: Beginning at a point having Coordinates of X = 1,625,175.73 and Y = 610,828.48; thence South 00 degrees 57 minutes 49 seconds West 5,531.76 feet to a point having Coordinates of X = 1,625,082.70 and Y = 605,297.50; thence North 89 degrees 03 minutes 50 seconds West 5,244.85 feet to a point having Coordinates of X = 1,619,838.55 and Y = 605,383.20; thence South 00 degrees 26 minutes 51 seconds West 5,153.28 feet to a point having Coordinates of X = 1,619,798.31 and Y = 600,230.07; thence North 89 degrees 00 minutes 08 seconds West 4,808.85 feet to a point having Coordinates of X = 1,614,990.19 and Y = 600,313.81; thence North 00 degrees 07 minutes 56 seconds East 10,611.67 feet to a point having Coordinates of X = 1,615,014.68 and Y = 610,925.45; thence South 89 degrees 27 minutes 12 seconds East 10,161.51 feet to the point of beginning, containing approximately **160 acres**, all as more particularly outlined on a plat on file in the Office of Mineral Resources, Department of Natural Resources. All bearings, distances and coordinates are based on Louisiana Coordinate System of 1927, (North or South Zone), where applicable.

NOTE: The above description of the Tract nominated for lease has been provided and corrected, where required, exclusively by the nomination party. Any mineral lease selected from this Tract and awarded by the Louisiana State Mineral Board shall be without warranty of any kind, either express, implied, or statutory, including, but not limited to, the implied warranties of merchantability and fitness for a particular purpose. Should the mineral lease awarded by the Louisiana State Mineral Board be subsequently modified, cancelled or abrogated due to the existence of conflicting leases, operating agreements, private claims or other future obligations or conditions which may affect all or any portion of the leased Tract, it shall not relieve the Lessee of the obligation to pay any bonus due thereon to the Louisiana State Mineral Board, nor shall the Louisiana State Mineral Board be obligated to refund any consideration paid by the Lessor prior to such modification, cancellation, or abrogation, including, but not limited to, bonuses, rentals and royalties.

Bidder	Cash Payment	Price/Acre	Rental	Oil	Gas	Other


Applicant: Woods Resources

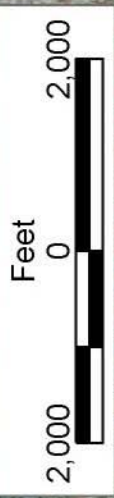


P.O.B.  
X=1,025,175.73  
Y=610,828.48

CADDO PARISH

WALLACE LAKE

DE SOTO PARISH



T16N - R13W

T15N - R13W

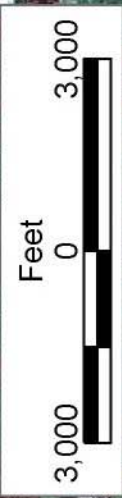
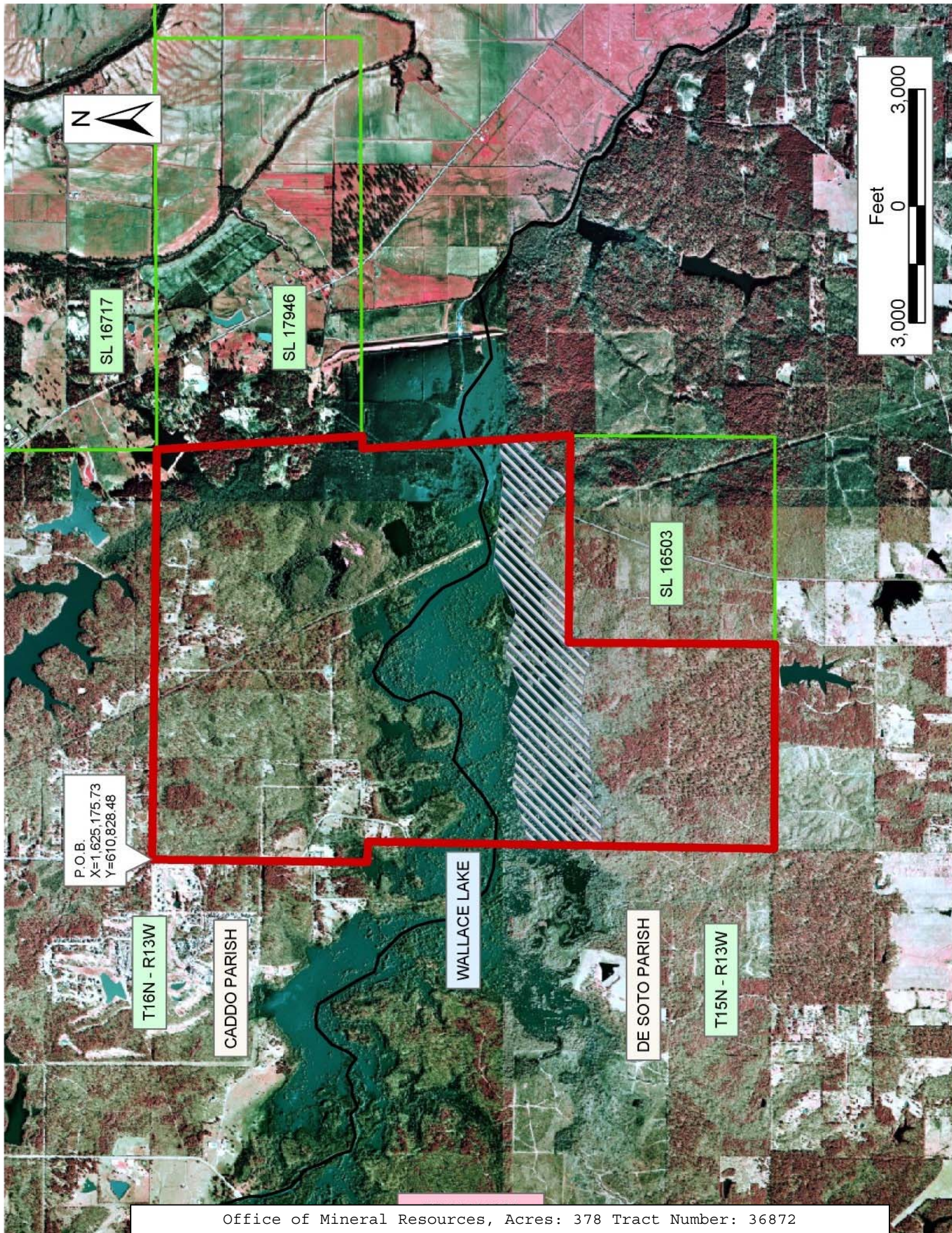
**TRACT 36872 - Caddo and De Soto Parishes, Louisiana**

All of the lands now or formerly constituting the beds and bottoms of all water bodies of every nature and description the title of which vests in the State of Louisiana, together with all islands arising therein and other lands formed by accretion or by reliction, where allowed by law, excepting tax adjudicated lands, and not presently under mineral lease on November 10, 2004, situated in Caddo and De Soto Parishes, Louisiana, and more particularly described as follows: Beginning at a point having Coordinates of X = 1,625,175.73 and Y = 610,828.48; thence South 89 degrees 04 minutes 58 seconds East 10,525.62 feet to the Northwest corner of State Lease No. 17946 having Coordinates of X = 1,635,700.00 and Y = 610,660.00; thence South 5,280.00 feet on the West line of said State Lease No. 17946 to its Southwest corner having Coordinates of X = 1,635,700.00 and Y = 605,380.00; thence East 323.51 feet on the South line of said State Lease No. 17946 to a point having Coordinates of X = 1,636,023.51 and Y = 605,380.00; thence Southerly approximately 5,338 feet to the Northeast corner of State Lease No. 16503; thence Westerly and Southerly along the boundary of said State Lease No. 16503 to its Southwest corner; thence Westerly approximately 5,260 feet to a point having Coordinates of X = 1,625,373.03 and Y = 594,854.37; thence North 01 degrees 19 minutes 37 seconds East 10,437.23 feet to a point having Coordinates of X = 1,625,614.75 and Y = 605,288.81; thence North 89 degrees 03 minutes 50 seconds West 532.13 feet to a point having Coordinates of X = 1,625,082.70 and Y = 605,297.50; thence North 00 degrees 57 minutes 49 seconds East 5,531.76 feet to the point of beginning, containing approximately **378 acres**, all as more particularly outlined on a plat on file in the Office of Mineral Resources, Department of Natural Resources. All bearings, distances and coordinates are based on Louisiana Coordinate System of 1927, (North or South Zone), where applicable.

NOTE: The above description of the Tract nominated for lease has been provided and corrected, where required, exclusively by the nomination party. Any mineral lease selected from this Tract and awarded by the Louisiana State Mineral Board shall be without warranty of any kind, either express, implied, or statutory, including, but not limited to, the implied warranties of merchantability and fitness for a particular purpose. Should the mineral lease awarded by the Louisiana State Mineral Board be subsequently modified, cancelled or abrogated due to the existence of conflicting leases, operating agreements, private claims or other future obligations or conditions which may affect all or any portion of the leased Tract, it shall not relieve the Lessee of the obligation to pay any bonus due thereon to the Louisiana State Mineral Board, nor shall the Louisiana State Mineral Board be obligated to refund any consideration paid by the Lessor prior to such modification, cancellation, or abrogation, including, but not limited to, bonuses, rentals and royalties.

Applicant: Woods Resources

Bidder	Cash Payment	Price/Acre	Rental	Oil	Gas	Other



SL 16717

SL 17946

SL 16503

WALLACE LAKE

CADDO PARISH

DE SOTO PARISH

T16N - R13W

T15N - R13W

P.O.B.  
X=1,625,175.73  
Y=610,828.48

**TRACT 36873 - Bossier and Caddo Parishes, Louisiana**

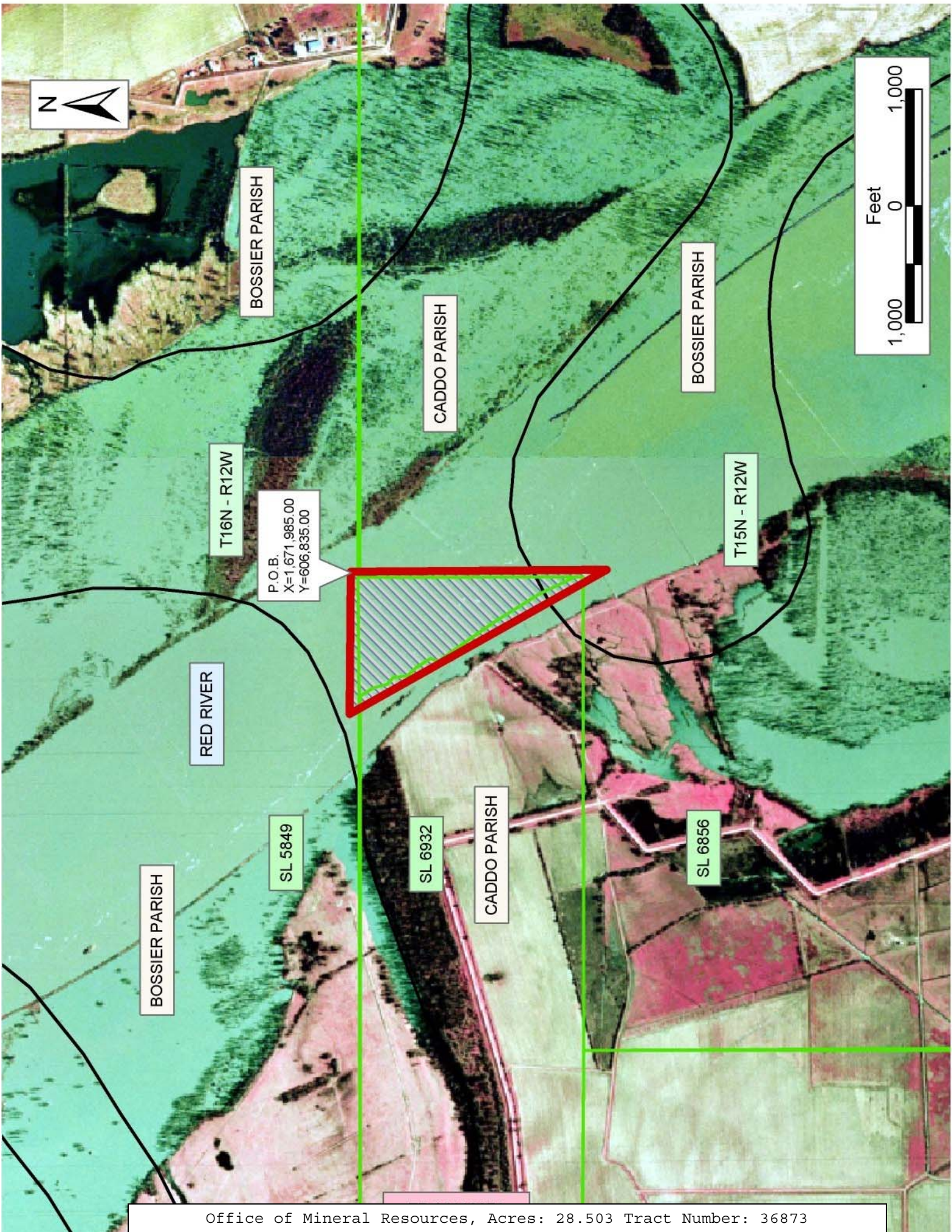
All of the lands now or formerly constituting the beds and bottoms of all water bodies of every nature and description the title of which vests in the State of Louisiana, together with all islands arising therein and other lands formed by accretion or by reliction, where allowed by law, excepting tax adjudicated lands, and not presently under mineral lease on November 10, 2004, situated in Bossier and Caddo Parishes, Louisiana, and more particularly described as follows: Beginning at a point having Coordinates of X = 1,671,985.00 and Y = 606,835.00: thence South 2,200.00 feet to a point having Coordinates of X = 1,671,985.00 and Y = 604,635.00; thence North 29 degrees 24 minutes 26 seconds West 2,525.39 feet to a point having Coordinates of X = 1,670,745.00 and Y = 606,835.00; thence East 1,240.00 feet to the point of beginning, **LESS AND EXCEPT** all those portions of State Lease No. 5849, State Lease No. 6856 and State Lease No. 6932 that lies within the boundaries of the above described tract, containing approximately **28.503 acres**, all as more particularly outlined on a plat on file in the Office of Mineral Resources, Department of Natural Resources. All bearings, distances and coordinates are based on Louisiana Coordinate System of 1927, (North or South Zone), where applicable.

NOTE: The above description of the Tract nominated for lease has been provided and corrected, where required, exclusively by the nomination party. Any mineral lease selected from this Tract and awarded by the Louisiana State Mineral Board shall be without warranty of any kind, either express, implied, or statutory, including, but not limited to, the implied warranties of merchantability and fitness for a particular purpose. Should the mineral lease awarded by the Louisiana State Mineral Board be subsequently modified, cancelled or abrogated due to the existence of conflicting leases, operating agreements, private claims or other future obligations or conditions which may affect all or any portion of the leased Tract, it shall not relieve the Lessee of the obligation to pay any bonus due thereon to the Louisiana State Mineral Board, nor shall the Louisiana State Mineral Board be obligated to refund any consideration paid by the Lessor prior to such modification, cancellation, or abrogation, including, but not limited to, bonuses, rentals and royalties.

Bidder	Cash Payment	Price/Acre	Rental	Oil	Gas	Other

Applicant: W.M. Beasley, Jr.





**TRACT 36874 - Caddo and De Soto Parishes, Louisiana**

All of the lands now or formerly constituting the beds and bottoms of all water bodies of every nature and description the title of which vests in the State of Louisiana, together with all islands arising therein and other lands formed by accretion or by reliction, where allowed by law, excepting tax adjudicated lands, and not presently under mineral lease on November 10, 2004, situated in Caddo and De Soto Parishes, Louisiana, and more particularly described as follows: Beginning at a point having Coordinates of X = 1,614,891.38 and Y = 595,001.22; thence North 01 degrees 03 minutes 56 seconds East 5,313.51 feet to a point having Coordinates of X = 1,614,990.19 and Y = 600,313.81; thence South 89 degrees 00 minutes 08 seconds East 4,808.85 feet to a point having Coordinates of X = 1,619,798.31 and Y = 600,230.07; thence North 00 degrees 26 minutes 51 seconds East 5,153.28 feet to a point having Coordinates of X = 1,619,838.55 and Y = 605,383.20; thence South 89 degrees 03 minutes 50 seconds East 5,776.98 feet to a point having Coordinates of X = 1,625,614.75 and Y = 605,288.81; thence South 01 degrees 19 minutes 37 seconds West 10,437.23 feet to a point having Coordinates of X = 1,625,373.03 and Y = 594,854.37; thence North 89 degrees 11 minutes 51 seconds West 10,482.68 feet to the point of beginning, containing approximately **629 acres**, all as more particularly outlined on a plat on file in the Office of Mineral Resources, Department of Natural Resources. All bearings, distances and coordinates are based on Louisiana Coordinate System of 1927, (North or South Zone), where applicable.

NOTE: The above description of the Tract nominated for lease has been provided and corrected, where required, exclusively by the nomination party. Any mineral lease selected from this Tract and awarded by the Louisiana State Mineral Board shall be without warranty of any kind, either express, implied, or statutory, including, but not limited to, the implied warranties of merchantability and fitness for a particular purpose. Should the mineral lease awarded by the Louisiana State Mineral Board be subsequently modified, cancelled or abrogated due to the existence of conflicting leases, operating agreements, private claims or other future obligations or conditions which may affect all or any portion of the leased Tract, it shall not relieve the Lessee of the obligation to pay any bonus due thereon to the Louisiana State Mineral Board, nor shall the Louisiana State Mineral Board be obligated to refund any consideration paid by the Lessor prior to such modification, cancellation, or abrogation, including, but not limited to, bonuses, rentals and royalties.

Applicant: Woods Resources

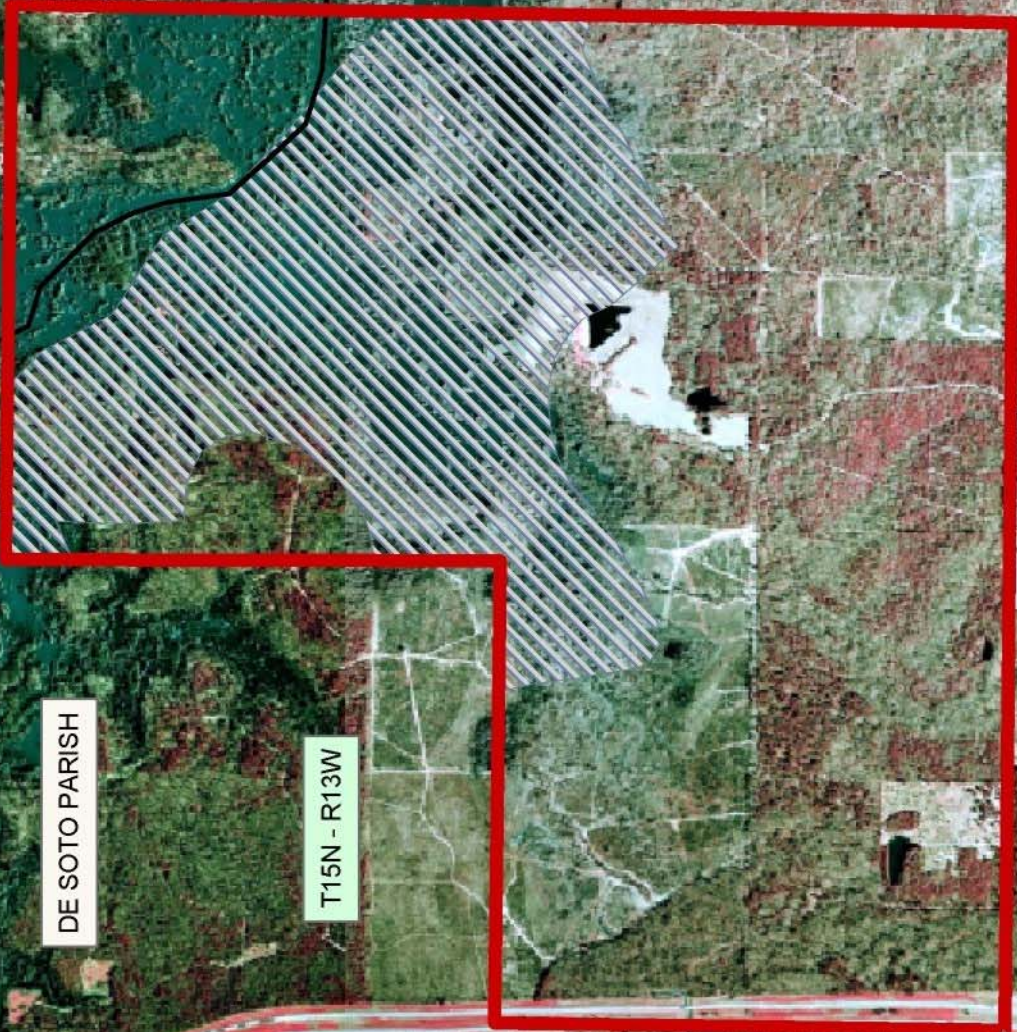
Bidder	Cash Payment	Price/Acre	Rental	Oil	Gas	Other



WALLACE LAKE



CADDO PARISH



DE SOTO PARISH

T15N - R13W

P.O.B.  
X=1614.891.38  
Y=595.001.22

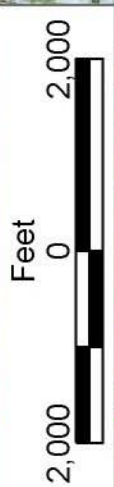
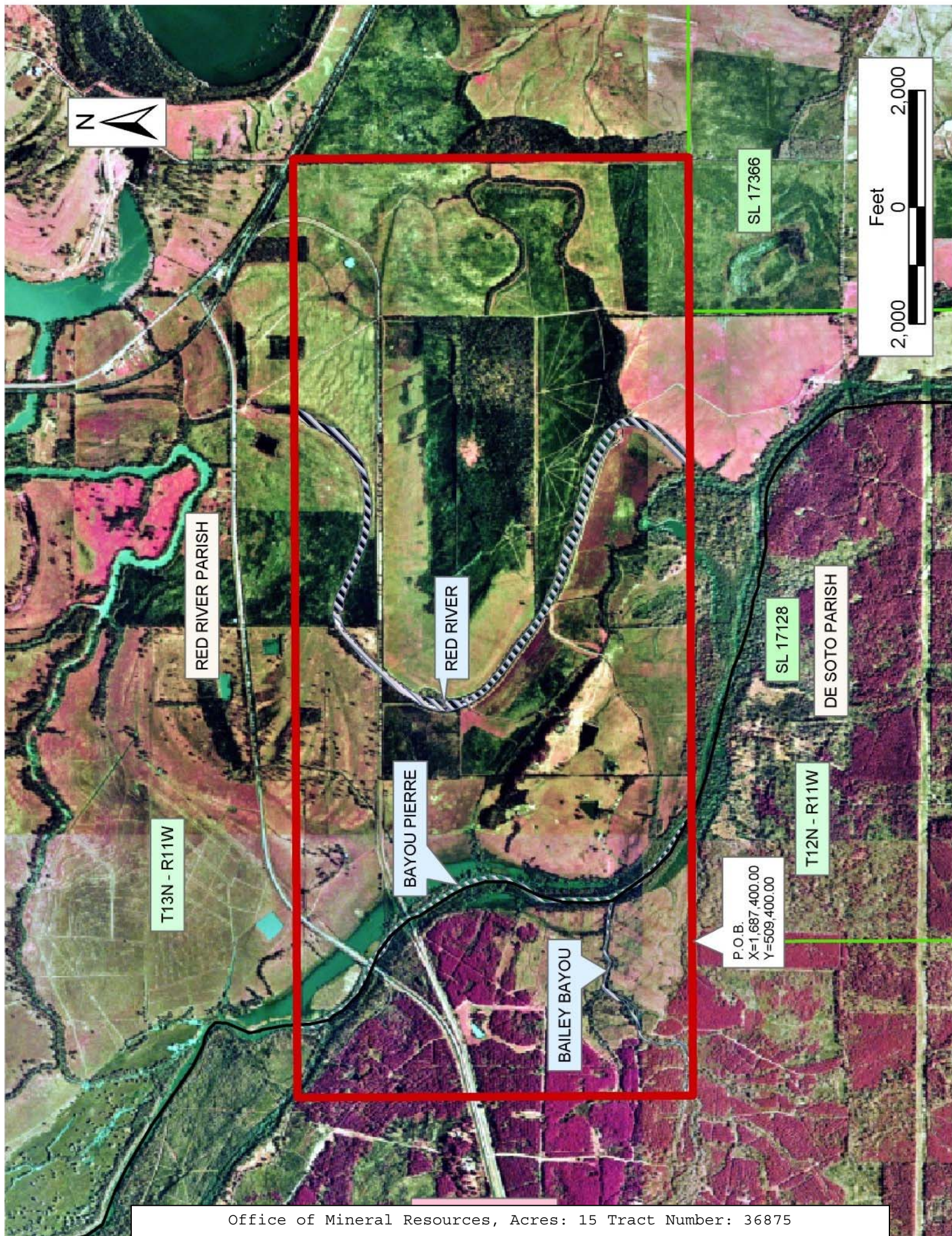
**TRACT 36875 - De Soto and Red River Parishes, Louisiana**

All of the lands now or formerly constituting the beds and bottoms of all water bodies of every nature and description the title of which vests in the State of Louisiana, together with all islands arising therein and other lands formed by accretion or by reliction, where allowed by law, excepting tax adjudicated lands, and not presently under mineral lease on November 10, 2004, situated in De Soto and Red River Parishes, Louisiana, and more particularly described as follows: Beginning at a point having Coordinates of X = 1,687,400.00 and Y = 509,400.00; thence East 10,800 feet to the Northwest corner of State Lease No. 17366, having Coordinates of X = 1,698,200.00 and Y = 509,400.00; thence East 2,640 feet along the Northern boundary of said State Lease No. 17366 to a point having Coordinates of X = 1,700,840.00 and Y = 509,400.00; thence North 6,772 feet to a point having Coordinates of X = 1,700,840.00 and Y = 516,172.00; thence West 16,080 feet to a point having Coordinates of X = 1,684,760.00 and Y = 516,172.00; thence South 6,772 feet to a point having Coordinates of X = 1,684,760.00 and Y = 509,400.00; thence East 2,640 feet to the point of beginning, containing approximately **15 acres**, all as more particularly outlined on a plat on file in the Office of Mineral Resources, Department of Natural Resources. All bearings, distances and coordinates are based on Louisiana Coordinate System of 1927, (North or South Zone), where applicable.

NOTE: The above description of the Tract nominated for lease has been provided and corrected, where required, exclusively by the nomination party. Any mineral lease selected from this Tract and awarded by the Louisiana State Mineral Board shall be without warranty of any kind, either express, implied, or statutory, including, but not limited to, the implied warranties of merchantability and fitness for a particular purpose. Should the mineral lease awarded by the Louisiana State Mineral Board be subsequently modified, cancelled or abrogated due to the existence of conflicting leases, operating agreements, private claims or other future obligations or conditions which may affect all or any portion of the leased Tract, it shall not relieve the Lessee of the obligation to pay any bonus due thereon to the Louisiana State Mineral Board, nor shall the Louisiana State Mineral Board be obligated to refund any consideration paid by the Lessor prior to such modification, cancellation, or abrogation, including, but not limited to, bonuses, rentals and royalties.

Applicant: Kevin J. Severson

Bidder	Cash Payment	Price/Acre	Rental	Oil	Gas	Other



RED RIVER PARISH

RED RIVER

DE SOTO PARISH

T13N - R11W

BAYOU PIERRE

SL 17128

T12N - R11W

BAILEY BAYOU

P.O.B.  
X=1,687,400.00  
Y=509,400.00

SL 17366

**TRACT 36876 - Beauregard and Calcasieu Parishes, Louisiana**

All of the lands now or formerly constituting the beds and bottoms of all water bodies of every nature and description the title of which vests in the State of Louisiana, together with all islands arising therein and other lands formed by accretion or by reliction, where allowed by law, excepting tax adjudicated lands, and not presently under mineral lease on November 10, 2004, situated in Beauregard and Calcasieu Parishes, Louisiana, and more particularly described as follows: Beginning at a point on the North boundary of State Lease No. 17677 having Coordinates of X = 1,377,160.00 and Y = 631,429.88; thence North 5,300.00 feet to a point having Coordinates of X = 1,377,160.00 and Y = 636,729.88; thence East 10,620.00 feet to a point having Coordinates of X = 1,387,780.00 and Y = 636,729.88; thence South 5,500.00 feet to a point having Coordinates of X = 1,387,780.00 and Y = 631,229.88; thence West 2,722.36 feet to a point on the East boundary of said State Lease No. 17677, having Coordinates of X = 1,385,057.64 and Y = 631,229.88; thence North 200.00 feet along the East boundary of said State Lease No. 17677 to its Northeast corner having Coordinates of X = 1,385,057.64 and Y = 631,429.88; thence West 7,897.64 feet to the point of beginning, containing approximately **16 acres**, all as more particularly outlined on a plat on file in the Office of Mineral Resources, Department of Natural Resources. All bearings, distances and coordinates are based on Louisiana Coordinate System of 1927, (North or South Zone), where applicable.

NOTE: The above description of the Tract nominated for lease has been provided and corrected, where required, exclusively by the nomination party. Any mineral lease selected from this Tract and awarded by the Louisiana State Mineral Board shall be without warranty of any kind, either express, implied, or statutory, including, but not limited to, the implied warranties of merchantability and fitness for a particular purpose. Should the mineral lease awarded by the Louisiana State Mineral Board be subsequently modified, cancelled or abrogated due to the existence of conflicting leases, operating agreements, private claims or other future obligations or conditions which may affect all or any portion of the leased Tract, it shall not relieve the Lessee of the obligation to pay any bonus due thereon to the Louisiana State Mineral Board, nor shall the Louisiana State Mineral Board be obligated to refund any consideration paid by the Lessor prior to such modification, cancellation, or abrogation, including, but not limited to, bonuses, rentals and royalties.



Applicant: Theophilus Oil, Gas & Land Services, LLC

Bidder	Cash Payment	Price/Acre	Rental	Oil	Gas	Other



T7S - R9W

T8S - R9W

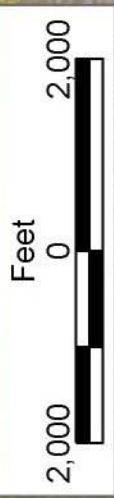
HICKORY BRANCH

BEAUREGARD PARISH

CALCASIEU PARISH

SL 17677

P.O.B.  
X=1,377,160.00  
Y=631,429.88



**TRACT 36877 - Calcasieu Parish, Louisiana**

All of the lands now or formerly constituting the beds and bottoms of all water bodies of every nature and description the title of which vests in the State of Louisiana, together with all islands arising therein and other lands formed by accretion or by reliction, where allowed by law, excepting tax adjudicated lands, and not presently under mineral lease on November 10, 2004, situated in Calcasieu Parish, Louisiana, and more particularly described as follows: Beginning at the Southeast corner of State Lease No. 17677 having Coordinates of X = 1,385,057.64 and Y = 623,509.88; thence South 00 degrees 19 minutes 27 seconds West 10,184.49 feet to the Northeast corner of State Lease No. 16561, as amended, having Coordinates of X = 1,385,000.00 and Y = 613,325.56; thence West 2,761.71 feet along the North boundary to it's Northwest corner having Coordinates of X = 1,382,238.29 and Y = 613,325.56; thence West 8,184.83 feet to a point having Coordinates of X = 1,374,053.46 and Y = 613,325.56; thence North 10,184.40 feet to the Southwest corner of said State Lease No. 17677 having Coordinates of X = 1,374,053.46 and Y = 623,509.96; thence East 11,004.18 feet to the point of beginning, containing approximately **41 acres**, all as more particularly outlined on a plat on file in the Office of Mineral Resources, Department of Natural Resources. All bearings, distances and coordinates are based on Louisiana Coordinate System of 1927, (North or South Zone), where applicable.

NOTE: The above description of the Tract nominated for lease has been provided and corrected, where required, exclusively by the nomination party. Any mineral lease selected from this Tract and awarded by the Louisiana State Mineral Board shall be without warranty of any kind, either express, implied, or statutory, including, but not limited to, the implied warranties of merchantability and fitness for a particular purpose. Should the mineral lease awarded by the Louisiana State Mineral Board be subsequently modified, cancelled or abrogated due to the existence of conflicting leases, operating agreements, private claims or other future obligations or conditions which may affect all or any portion of the leased Tract, it shall not relieve the Lessee of the obligation to pay any bonus due thereon to the Louisiana State Mineral Board, nor shall the Louisiana State Mineral Board be obligated to refund any consideration paid by the Lessor prior to such modification, cancellation, or abrogation, including, but not limited to, bonuses, rentals and royalties.

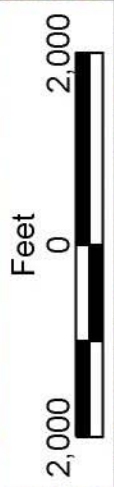
Applicant: Theophilus Oil, Gas & Land Services, LLC

Bidder	Cash Payment	Price/Acre	Rental	Oil	Gas	Other



P.O.B.  
X=1,385,057.64  
Y=623,509.88

T8S - R9W



SL 16561

SL 17677

WEST FORK CALCASIEU RIVER

CALCASIEU PARISH

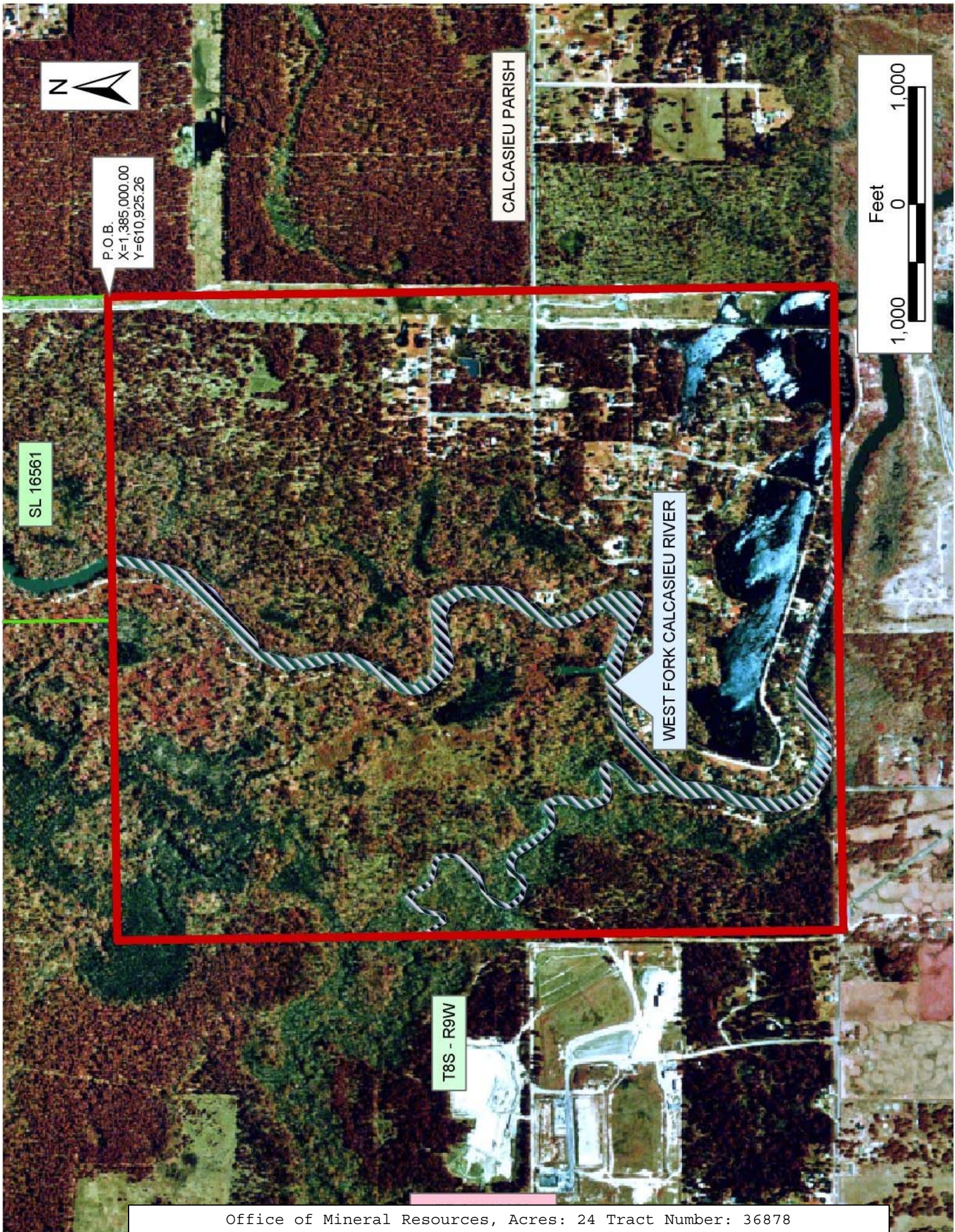
**TRACT 36878 - Calcasieu Parish, Louisiana**

All of the lands now or formerly constituting the beds and bottoms of all water bodies of every nature and description the title of which vests in the State of Louisiana, together with all islands arising therein and other lands formed by accretion or by reliction, where allowed by law, excepting tax adjudicated lands, and not presently under mineral lease on November 10, 2004, situated in Calcasieu Parish, Louisiana, and more particularly described as follows: Beginning at the Southeast corner of State Lease No. 16561, as amended, having Coordinates of X = 1,385,000.00 and Y = 610,925.26; thence South 6,200.00 feet to a point having Coordinates of X = 1,385,000.00 and Y = 604,725.26; thence West 5,500.00 feet to a point having Coordinates of X = 1,379,500.00 and Y = 604,725.26; thence North 6,200.00 feet to a point having Coordinates of X = 1,379,500.00 and Y = 610,925.26; thence East 2,738.29 feet to the Southwest corner of said State Lease No. 16561 having Coordinates of X = 1,382,238.29 and Y = 610,925.26; thence East 2,761.71 feet along the South boundary of said State Lease No. 16561 to the point of beginning, containing approximately **24 acres**, all as more particularly outlined on a plat on file in the Office of Mineral Resources, Department of Natural Resources. All bearings, distances and coordinates are based on Louisiana Coordinate System of 1927, (North or South Zone), where applicable.

NOTE: The above description of the Tract nominated for lease has been provided and corrected, where required, exclusively by the nomination party. Any mineral lease selected from this Tract and awarded by the Louisiana State Mineral Board shall be without warranty of any kind, either express, implied, or statutory, including, but not limited to, the implied warranties of merchantability and fitness for a particular purpose. Should the mineral lease awarded by the Louisiana State Mineral Board be subsequently modified, cancelled or abrogated due to the existence of conflicting leases, operating agreements, private claims or other future obligations or conditions which may affect all or any portion of the leased Tract, it shall not relieve the Lessee of the obligation to pay any bonus due thereon to the Louisiana State Mineral Board, nor shall the Louisiana State Mineral Board be obligated to refund any consideration paid by the Lessor prior to such modification, cancellation, or abrogation, including, but not limited to, bonuses, rentals and royalties.

Bidder	Cash Payment	Price/Acre	Rental	Oil	Gas	Other

Applicant: Theophilus Oil, Gas & Land Services, LLC



P.O.B.  
X=1,385,000.00  
Y=610,925.26

CALCASIEU PARISH

Feet  
0  
1,000  
1,000

SL 16561

WEST FORK CALCASIEU RIVER

T8S - R9W



**TRACT 36879 - Calcasieu Parish, Louisiana**

All of the lands now or formerly constituting the beds and bottoms of all water bodies of every nature and description the title of which vests in the State of Louisiana, together with all islands arising therein and other lands formed by accretion or by reliction, where allowed by law, excepting tax adjudicated lands, and not presently under mineral lease on November 10, 2004, situated in Calcasieu Parish, Louisiana, and more particularly described as follows: Beginning at a point having Coordinates of X = 1,379,500.00 and Y = 604,725.26; thence East 5,500.00 feet to a point having Coordinates of X = 1,385,000.00 and Y = 604,725.26; thence South 89 degrees 00 minutes 21 seconds East 12,981.95 feet to a point having Coordinates of X = 1,397,980.00 and Y = 604,500.00; thence South 10,600.00 feet to a point having Coordinates of X = 1,397,980.00 and Y = 593,900.00; thence North 89 degrees 01 minutes 50 seconds West 13,311.91 feet to a point having Coordinates of X = 1,384,670.00 and Y = 594,125.26, thence West 5,500.00 feet to a point having Coordinates of X = 1,379,170.00 and Y = 594,125.26; thence North 01 degrees 46 minutes 59 seconds East 10,605.14 feet to the point of beginning, containing approximately **186 acres**, all as more particularly outlined on a plat on file in the Office of Mineral Resources, Department of Natural Resources. All bearings, distances and coordinates are based on Louisiana Coordinate System of 1927, (North or South Zone), where applicable.

NOTE: The above description of the Tract nominated for lease has been provided and corrected, where required, exclusively by the nomination party. Any mineral lease selected from this Tract and awarded by the Louisiana State Mineral Board shall be without warranty of any kind, either express, implied, or statutory, including, but not limited to, the implied warranties of merchantability and fitness for a particular purpose. Should the mineral lease awarded by the Louisiana State Mineral Board be subsequently modified, cancelled or abrogated due to the existence of conflicting leases, operating agreements, private claims or other future obligations or conditions which may affect all or any portion of the leased Tract, it shall not relieve the Lessee of the obligation to pay any bonus due thereon to the Louisiana State Mineral Board, nor shall the Louisiana State Mineral Board be obligated to refund any consideration paid by the Lessor prior to such modification, cancellation, or abrogation, including, but not limited to, bonuses, rentals and royalties.

Applicant: Theophilus Oil, Gas & Land Services, LLC

Bidder	Cash Payment	Price/Acre	Rental	Oil	Gas	Other



T8S - R9W

P.O.B.  
X=1,379,500.00  
Y=604,725.26

CALCASIEU PARISH

T9S - R9W

WEST FORK CALCASIEU RIVER

HOUSTON RIVER



**TRACT 36880 - Portion of Block 27, Chandeleur Sound Area Addition, Revised, St. Bernard Parish, Louisiana**

All of the lands now or formerly constituting the beds and bottoms of all water bodies of every nature and description the title of which vests in the State of Louisiana, together with all islands arising therein and other lands formed by accretion or by reliction, where allowed by law, excepting tax adjudicated lands, and not presently under mineral lease on November 10, 2004, situated in St. Bernard Parish, Louisiana, and more particularly described as follows: Beginning at the Northeast corner of Block 27, Chandeleur Sound Area Addition, Revised having Coordinates of X = 2,694,350.00 and Y = 514,080.00; thence South 7,375.00 feet along the East line of said Block 27 to a point having Coordinates of X = 2,694,350.00 and Y = 506,705.00; thence West 14,750.00 feet to a point on the West line of said Block 27 having Coordinates of X = 2,679,600.00 and Y = 506,705.00; thence North 5,048.66 feet along the West line of said Block 27 to a point, also being the Southwest corner of State Lease No. 17387 having Coordinates of X = 2,679,600.00 and Y = 511,753.66; thence along the boundary of said State Lease No. 17387 the following courses: South 45 degrees 04 minutes 42 seconds East 4,304.19 feet, East 5,907.26 feet, North 1,736.78 feet and North 51 degrees 30 minutes 32 seconds West 5,830.61 feet to the Northeast corner of said State Lease No. 17387, also being a point on the North line of said Block 27 having Coordinates of X = 2,683,991.29 and Y = 514,080.00; thence East 10,358.71 feet along the North line of said Block 27 to the point of beginning, containing approximately **1,682 acres**, all as more particularly outlined on a plat on file in the Office of Mineral Resources, Department of Natural Resources. All bearings, distances and coordinates are based on Louisiana Coordinate System of 1927, (North or South Zone), where applicable.

NOTE: The above description of the Tract nominated for lease has been provided and corrected, where required, exclusively by the nomination party. Any mineral lease selected from this Tract and awarded by the Louisiana State Mineral Board shall be without warranty of any kind, either express, implied, or statutory, including, but not limited to, the implied warranties of merchantability and fitness for a particular purpose. Should the mineral lease awarded by the Louisiana State Mineral Board be subsequently modified, cancelled or abrogated due to the existence of conflicting leases, operating agreements, private claims or other future obligations or conditions which may affect all or any portion of the leased Tract, it shall not relieve the Lessee of the obligation to pay any bonus due thereon to the Louisiana State Mineral Board, nor shall the Louisiana State Mineral Board be obligated to refund any consideration paid by the Lessor prior to such modification, cancellation, or abrogation, including, but not limited to, bonuses, rentals and royalties.

NOTE: The Office of Mineral Resources will require a minimum bonus of \$230 per acre and a minimum royalty of 23%.

NOTE: The State of Louisiana does hereby reserve, and this lease shall be subject to, the imprescriptible right of surface use in the nature of a servitude in favor of the Department of Natural Resources, including its Offices and Commissions, for the sole purpose of implementing, constructing, servicing and maintaining approved coastal zone management and/or restoration projects. Utilization of any and all rights derived under this lease by the mineral lessee, its agents, successors or assigns, shall not interfere with nor hinder the reasonable surface use by the Department of Natural Resources, its Offices or Commissions, as herein above reserved.

NOTE: The Department of Wildlife and Fisheries has designated certain areas in the coastal waters of the State of Louisiana as Oyster Seed Bed Areas. The exact location of those Seed Bed Areas must be obtained from the Department of Wildlife and Fisheries and any work done under a mineral lease from the State of Louisiana may necessarily be conducted in conformity with the rules and regulations promulgated by the said Department of Wildlife and Fisheries for Oyster Seed Bed Areas.

Applicant: Kare-Sue Energy, Inc.

Bidder	Cash Payment	Price/Acre	Rental	Oil	Gas	Other



P.O.B.  
X=2,694,350.00  
Y=514,080.00

ST BERNARD PARISH

BLOCK CX0018

SL 17386

SL 17387

CHANDELEUR SOUND AREA ADDITION, REVISED

BLOCK CX0027

