

**TRACT 36865 - Portion of Block 26, West Cameron Area, Revised, Cameron Parish, Louisiana**

The beds and bottoms of all water bodies belonging to the State of Louisiana located in Block 26, West Cameron Area, Revised, together with any present lands formed by accretion to the shoreline or islands formed therein, located in Cameron Parish, Louisiana, owned by and not presently under mineral lease as of November 10, 2004, from the State of Louisiana, the geographical area of which is more fully described as follows: Beginning at the Northeast Corner of Block 26, West Cameron Area, Revised, having Coordinates of X = 1,376,693.66 and Y = 393,790.24; Thence South 6,856.24 feet along the East Boundary of said Block 26 to a point having Coordinates of X = 1,376,693.66 and Y = 386,934.00; Thence West 14,758.04 feet to a point on the West Boundary of said Block 26 having Coordinates of X = 1,361,935.62 and Y = 386,934.00; Thence North 6,856.24 feet along the West Boundary of said Block 26 to its Northwest Corner having Coordinates of X = 1,361,935.62 and Y = 393,790.24; Thence East 14,758.04 feet along the Northern Boundary of said Block 26 to the point of beginning, containing approximately **2,322.88 acres**, all as more particularly outlined on a plat on file in the Office of Mineral Resources, Department of Natural Resources. All bearings, distances and coordinates are based on Louisiana Coordinate System of 1927, (North or South Zone).

NOTE: The above description of the Tract nominated for lease has been provided and corrected, where required, exclusively by the nomination party. Any mineral lease selected from this Tract and awarded by the Louisiana State Mineral Board shall be without warranty of any kind, either express, implied, or statutory, including, but not limited to, the implied warranties of merchantability and fitness for a particular purpose. Should the mineral lease awarded by the Louisiana State Mineral Board be subsequently modified, cancelled or abrogated due to the existence of conflicting leases, operating agreements, private claims or other future obligations or conditions which may affect all or any portion of the leased Tract, it shall not relieve the Lessee of the obligation to pay any bonus due thereon to the Louisiana State Mineral Board, nor shall the Louisiana State Mineral Board be obligated to refund any consideration paid by the Lessor prior to such modification, cancellation, or abrogation, including, but not limited to, bonuses, rentals and royalties.

NOTE: The State of Louisiana does hereby reserve, and this lease shall be subject to, the imprescriptible right of surface use in the nature of a servitude in favor of the Department of Natural Resources, including its Offices and Commissions, for the sole purpose of implementing, constructing, servicing and maintaining approved coastal zone management and/or restoration projects. Utilization of any and all rights derived under this lease by the mineral lessee, its agents, successors or assigns, shall not interfere with nor hinder the reasonable surface use by the Department of Natural Resources, its Offices or Commissions, as herein above reserved.

NOTE: It appears, according to our records, that a portion of this Tract is located within the restrictive safety fairway area as set out by the Corps of Engineers, U.S. Army and/or the restrictive anchorage area as set out by the U.S. Coast Guard.

Applicant: Energy Partners, Inc.

Bidder	Cash Payment	Price/Acre	Rental	Oil	Gas	Other



P.O.B.  
X=1,376,693.66  
Y=393,790.24

CAMERON PARISH

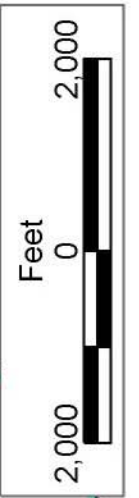
BLOCK WC0005

BLOCK WC0026

WEST CAMERON AREA, REVISED

LA

US



**TRACT 36866 - Portion of Block 15, Grand Isle Area, Jefferson Parish, Louisiana**

The beds and bottoms of all water bodies belonging to the State of Louisiana located in Block 15, Grand Isle Area, together with any present lands formed by accretion to the shoreline or islands formed therein, located in Jefferson Parish, Louisiana, owned by and not presently under mineral lease as of November 10, 2004, from the State of Louisiana, the geographical area of which is more fully described as follows: Beginning at a point on the West line of Block 15, Grand Isle Area having Coordinates of X = 2,398,627.73 and Y = 178,156.37; thence North 4,585.70 feet along the West line of said Block 15 to a point having Coordinates of X = 2,398,627.73 and Y = 182,742.07; thence Northeasterly on a straight line to a point on the North line of said Block 15 having Coordinates of X = 2,401,929.03 and Y = 185,535.39; thence East 11,456.74 feet along the North line of said Block 15 to its Northeast corner having Coordinates of X = 2,413,385.77 and Y = 185,535.39; thence South 7,379.02 feet along the East line of said Block 15 to a point having Coordinates of X = 2,413,385.77 and Y = 178,156.37; thence West 14,758.04 feet to the point of beginning, containing approximately **2,394.15 acres**, all as more particularly outlined on a plat on file in the Office of Mineral Resources, Department of Natural Resources. All bearings, distances and coordinates are based on Louisiana Coordinate System of 1927, (North or South Zone).

NOTE: The above description of the Tract nominated for lease has been provided and corrected, where required, exclusively by the nomination party. Any mineral lease selected from this Tract and awarded by the Louisiana State Mineral Board shall be without warranty of any kind, either express, implied, or statutory, including, but not limited to, the implied warranties of merchantability and fitness for a particular purpose. Should the mineral lease awarded by the Louisiana State Mineral Board be subsequently modified, cancelled or abrogated due to the existence of conflicting leases, operating agreements, private claims or other future obligations or conditions which may affect all or any portion of the leased Tract, it shall not relieve the Lessee of the obligation to pay any bonus due thereon to the Louisiana State Mineral Board, nor shall the Louisiana State Mineral Board be obligated to refund any consideration paid by the Lessor prior to such modification, cancellation, or abrogation, including, but not limited to, bonuses, rentals and royalties.

NOTE: The State of Louisiana does hereby reserve, and this lease shall be subject to, the imprescriptible right of surface use in the nature of a servitude in favor of the Department of Natural Resources, including its Offices and Commissions, for the sole purpose of implementing, constructing, servicing and maintaining approved coastal zone management and/or restoration projects. Utilization of any and all rights derived under this lease by the mineral lessee, its agents, successors or assigns, shall not interfere with nor hinder the reasonable surface use by the

Department of Natural Resources, its Offices or Commissions, as herein above reserved.

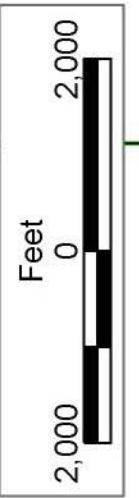
NOTE: The Department of Wildlife and Fisheries has designated certain areas in the coastal waters of the State of Louisiana as Oyster Seed Bed Areas. The exact location of those Seed Bed Areas must be obtained from the Department of Wildlife and Fisheries and any work done under a mineral lease from the State of Louisiana may necessarily be conducted in conformity with the rules and regulations promulgated by the said Department of Wildlife and Fisheries for Oyster Seed Bed Areas.

Applicant: Harold J. Anderson, Inc.

Bidder	Cash Payment	Price/Acre	Rental	Oil	Gas	Other



SL 799



BLOCK GI0015

GRAND ISLE AREA

JEFFERSON PARISH

LAFOURCHE PARISH

P.O.B.  
X=2,398,627.73  
Y=178,156.37

**TRACT 36867 - Portion of Block 15, Grand Isle Area, Jefferson Parish, Louisiana**

The beds and bottoms of all water bodies belonging to the State of Louisiana located in Block 15, Grand Isle Area, together with any present lands formed by accretion to the shoreline or islands formed therein, located in Jefferson Parish, Louisiana, owned by and not presently under mineral lease as of November 10, 2004, from the State of Louisiana, the geographical area of which is more fully described as follows: Beginning at a point on the West line of Block 15, Grand Isle Area having Coordinates of X = 2,398,627.73 and Y = 178,156.37; thence East 14,758.04 feet to a point on the East line of said Block 15 having Coordinates of X = 2,413,385.77 and Y = 178,156.37; thence South 6,821.20 feet along the East line of said Block 15 to a point having Coordinates of X = 2,413,385.77 and Y = 171,335.17; thence Southwesterly on a straight line to a point on the South line of said Block 15 having Coordinates of X = 2,412,726.47 and Y = 170,777.35; thence West 14,098.74 feet along the South line of said Block 15 to its Southwest corner having Coordinates of X = 2,398,627.73 and Y = 170,777.35; thence North 7,379.02 feet along the West line of said Block 15 to the point of beginning, containing approximately **2,495.78 acres, LESS AND EXCEPT** that portion thereof, if any, lying seaward of the line three nautical miles from the coast line of Louisiana, as said three mile line has been decreed by the Supreme Court of the United States, as determined by a Special Master appointed therein, in litigation styled **United States v. State of Louisiana et al No. 9 Original**, in 1975, all as more particularly outlined on a plat in the Office of Mineral Resources, Department of Natural Resources. All bearings, distances and coordinates are based on the Louisiana Coordinate System of 1927, (South Zone).

NOTE: The above description of the Tract nominated for lease has been provided and corrected, where required, exclusively by the nomination party. Any mineral lease selected from this Tract and awarded by the Louisiana State Mineral Board shall be without warranty of any kind, either express, implied, or statutory, including, but not limited to, the implied warranties of merchantability and fitness for a particular purpose. Should the mineral lease awarded by the Louisiana State Mineral Board be subsequently modified, cancelled or abrogated due to the existence of conflicting leases, operating agreements, private claims or other future obligations or conditions which may affect all or any portion of the leased Tract, it shall not relieve the Lessee of the obligation to pay any bonus due thereon to the Louisiana State Mineral Board, nor shall the Louisiana State Mineral Board be obligated to refund any consideration paid by the Lessor prior to such modification, cancellation, or abrogation, including, but not limited to, bonuses, rentals and royalties.

NOTE: The State of Louisiana does hereby reserve, and this lease shall be subject to, the imprescriptible right of surface use in the nature of a servitude in favor of the Department of Natural Resources, including its Offices and Commissions, for the sole purpose of implementing,

constructing, servicing and maintaining approved coastal zone management and/or restoration projects. Utilization of any and all rights derived under this lease by the mineral lessee, its agents, successors or assigns, shall not interfere with nor hinder the reasonable surface use by the Department of Natural Resources, its Offices or Commissions, as herein above reserved.

NOTE: The Department of Wildlife and Fisheries has designated certain areas in the coastal waters of the State of Louisiana as Oyster Seed Bed Areas. The exact location of those Seed Bed Areas must be obtained from the Department of Wildlife and Fisheries and any work done under a mineral lease from the State of Louisiana may necessarily be conducted in conformity with the rules and regulations promulgated by the said Department of Wildlife and Fisheries for Oyster Seed Bed Areas.

Applicant: Harold J. Anderson, Inc.

Bidder	Cash Payment	Price/Acre	Rental	Oil	Gas	Other

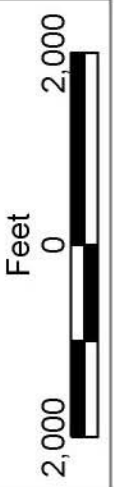




SL 799

US

LA



JEFFERSON PARISH

GRAND ISLE AREA

BLOCK GI0015

BLOCK GI0024

P.O.B.  
X=2,398,627.73  
Y=178,156.37

**TRACT 36868 - Portion of Block 24, Grand Isle Area, Jefferson Parish, Louisiana**

The beds and bottoms of all water bodies belonging to the State of Louisiana located in Block 24, Grand Isle Area, together with any present lands formed by accretion to the shoreline or islands formed therein, located in Jefferson Parish, Louisiana, owned by and not presently under mineral lease as of November 10, 2004, from the State of Louisiana, the geographical area of which is more fully described as follows: Beginning at the Northwest corner of Block 24, Grand Isle Area having Coordinates of X = 2,398,627.73 and Y = 170,777.35; thence East 14,098.74 feet along the North line of said Block 24 to a point having Coordinates of X = 2,412,726.47 and Y = 170,777.35; thence Southwesterly on a straight line to a point having Coordinates of X = 2,410,270.00 and Y = 168,699.00; thence Southwesterly on a straight line to a point having Coordinates of X = 2,406,006.00 and Y = 164,749.00; thence Southwesterly on an arc having a radius of 18,240.60 feet and a center at X = 2,393,606.00 and Y = 178,126.00 to a point having Coordinates of X = 2,404,972.00 and Y = 163,860.00; thence Southwesterly on a straight line to a point on the West line of said Block 24 having Coordinates of X = 2,398,627.73 and Y = 158,808.73; thence North 3,368.57 feet along the West line of said Block 24 to a point, also being a point on the East line of State Lease No. 18004 having Coordinates of X = 2,398,627.73 and Y = 162,177.30; thence along the boundary of said State Lease No. 18004 the following courses and distances: North 20 degrees 21 minutes 01 seconds East 1,335.03 feet and West 464.27 feet to a point on the North line of said State Lease No. 18004, also being a point on the West line of said Block 24 having Coordinates of X = 2,398,627.73 and Y = 163,429.00; thence North 7,348.35 feet along the West line of said Block 24 to the point of beginning, containing approximately **1,977.94 acres, LESS AND EXCEPT** that portion thereof, if any, lying seaward of the line three nautical miles from the coast line of Louisiana, as said three mile line has been decreed by the Supreme Court of the United States, as determined by a Special Master appointed therein, in litigation styled **United States v. State of Louisiana et al No. 9 Original**, in 1975, all as more particularly outlined on a plat in the Office of Mineral Resources, Department of Natural Resources. All bearings, distances and coordinates are based on the Louisiana Coordinate System of 1927, (South Zone).

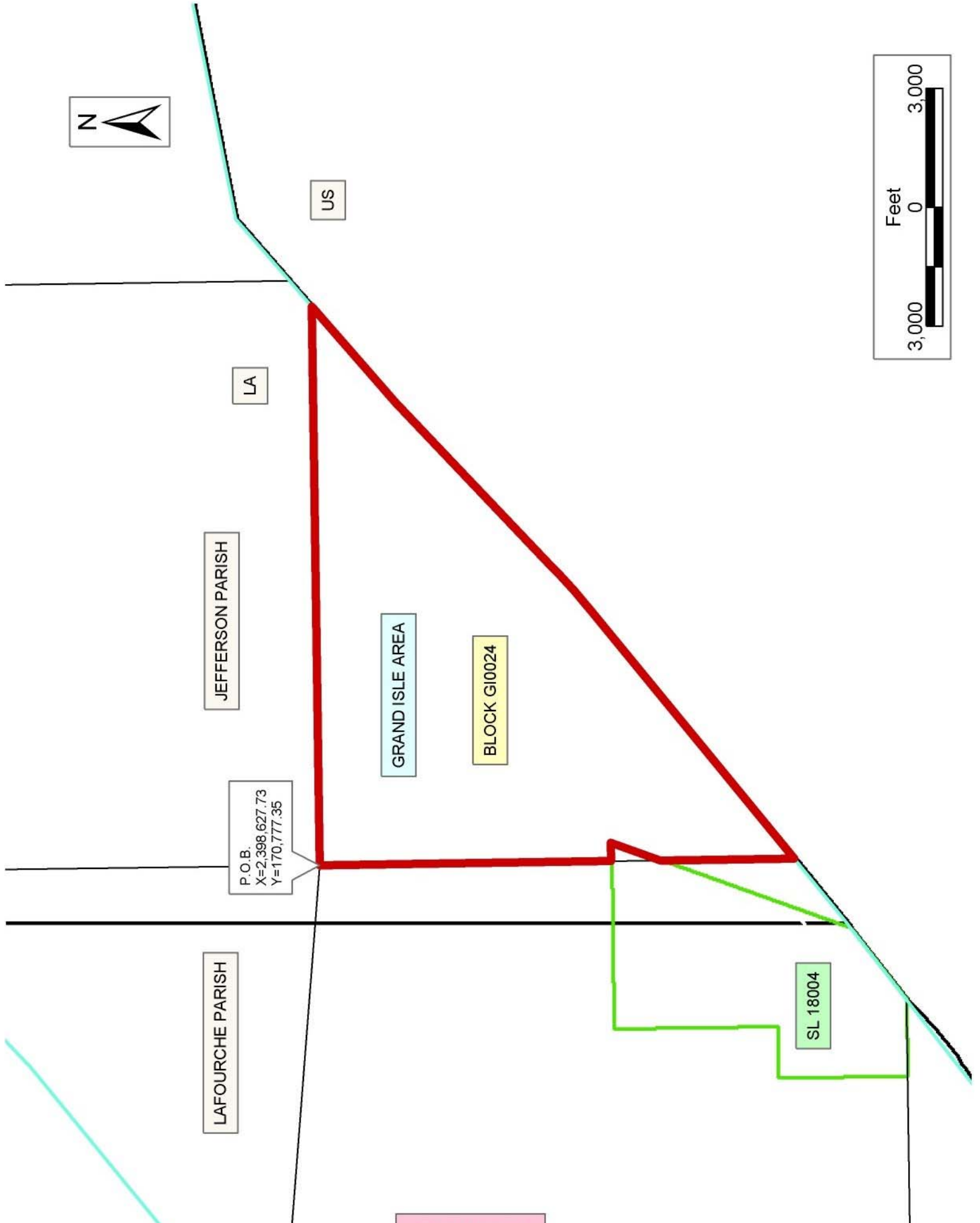
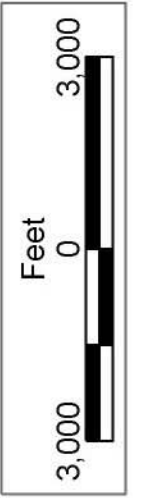
NOTE: The above description of the Tract nominated for lease has been provided and corrected, where required, exclusively by the nomination party. Any mineral lease selected from this Tract and awarded by the Louisiana State Mineral Board shall be without warranty of any kind, either express, implied, or statutory, including, but not limited to, the implied warranties of merchantability and fitness for a particular purpose. Should the mineral lease awarded by the Louisiana State Mineral Board be subsequently modified, cancelled or abrogated due to the existence of conflicting leases, operating agreements, private claims or other future obligations or conditions which may affect all or any portion of the leased Tract, it shall not relieve the Lessee of the obligation to

pay any bonus due thereon to the Louisiana State Mineral Board, nor shall the Louisiana State Mineral Board be obligated to refund any consideration paid by the Lessor prior to such modification, cancellation, or abrogation, including, but not limited to, bonuses, rentals and royalties.

NOTE: The State of Louisiana does hereby reserve, and this lease shall be subject to, the imprescriptible right of surface use in the nature of a servitude in favor of the Department of Natural Resources, including its Offices and Commissions, for the sole purpose of implementing, constructing, servicing and maintaining approved coastal zone management and/or restoration projects. Utilization of any and all rights derived under this lease by the mineral lessee, its agents, successors or assigns, shall not interfere with nor hinder the reasonable surface use by the Department of Natural Resources, its Offices or Commissions, as herein above reserved.

Applicant: Harold J. Anderson, Inc.

Bidder	Cash Payment	Price/Acre	Rental	Oil	Gas	Other



JEFFERSON PARISH

LA

US

GRAND ISLE AREA

BLOCK GI0024

P.O.B.  
X=2,398,627.73  
Y=170,777.35

LAFOURCHE PARISH

SL 18004

**TRACT 36869 - Portion of Block 51, West Delta Area, Plaquemines Parish, Louisiana**

The beds and bottoms of all water bodies belonging to the State of Louisiana located in Block 51, West Delta Area, together with any present lands formed by accretion to the shoreline or islands formed therein, located in Plaquemines Parish, Louisiana, owned by and not presently under mineral lease as of November 10, 2004, from the State of Louisiana, the geographical area of which is more fully described as follows: Beginning at the Northwest corner of State Lease No. 2549 and a point on the South line of Block 51, West Delta Area, having Coordinates of X = 2,605,477.93 and Y = 144,676.30; thence North 9,854.86 feet to a point on the North line of said Block 51, having Coordinates of X = 2,605,477.93 and Y = 154,531.16; thence North 89 degrees 03 minutes 12 seconds East 9,975.18 feet along the North line of said Block 51 to a point having Coordinates of X = 2,615,451.75 and Y = 154,695.97; thence Southerly on a straight line to the Northwest corner of State Lease No. 17932 having Coordinates of X = 2,615,454.59 and Y = 149,731.16; thence continue Southerly on a straight line along the West line of said State Lease No. 17932 to its Southwest corner, a point on the North line of said State Lease No. 2549 and a point on the South line of said Block 51, having Coordinates of X = 2,615,457.47 and Y = 144,676.30; thence West 9,979.54 feet along the North line of said State Lease No. 2549 and the South line of said Block 51 to the point of beginning, **LESS AND EXCEPT** all that portion of State Lease No. 192, as amended, that may lie within the above described tract, containing approximately **2,275.97 acres**, all as more particularly outlined on a plat on file in the Office of Mineral Resources, Department of Natural Resources. All bearings, distances and coordinates are based on Louisiana Coordinate System of 1927, (North or South Zone).

NOTE: The above description of the Tract nominated for lease has been provided and corrected, where required, exclusively by the nomination party. Any mineral lease selected from this Tract and awarded by the Louisiana State Mineral Board shall be without warranty of any kind, either express, implied, or statutory, including, but not limited to, the implied warranties of merchantability and fitness for a particular purpose. Should the mineral lease awarded by the Louisiana State Mineral Board be subsequently modified, cancelled or abrogated due to the existence of conflicting leases, operating agreements, private claims or other future obligations or conditions which may affect all or any portion of the leased Tract, it shall not relieve the Lessee of the obligation to pay any bonus due thereon to the Louisiana State Mineral Board, nor shall the Louisiana State Mineral Board be obligated to refund any consideration paid by the Lessor prior to such modification, cancellation, or abrogation, including, but not limited to, bonuses, rentals and royalties.

NOTE: The State of Louisiana does hereby reserve, and this lease shall be subject to, the imprescriptible right of surface use in the nature of a servitude in favor of the Department of Natural Resources, including its Offices and Commissions, for the sole purpose of implementing,

constructing, servicing and maintaining approved coastal zone management and/or restoration projects. Utilization of any and all rights derived under this lease by the mineral lessee, its agents, successors or assigns, shall not interfere with nor hinder the reasonable surface use by the Department of Natural Resources, its Offices or Commissions, as herein above reserved.

Applicant: Cypress Energy Corporation

Bidder	Cash Payment	Price/Acre	Rental	Oil	Gas	Other



SL 192

BLOCK WD0051

SL 17932

BLOCK WD0051

PLAQUEMINES PARISH

WEST DELTA AREA

SL 2549

P.O.B.  
X=2,605,477.93  
Y=144,676.30



**TRACT 36870 - Portion of Block 5, Bay Marchand Area, Lafourche Parish, Louisiana**

The beds and bottoms of all water bodies belonging to the State of Louisiana located in Block 5, Bay Marchand Area, together with any present lands formed by accretion to the shoreline or islands formed therein, located in Lafourche Parish, Louisiana, owned by and not presently under mineral lease as of November 10, 2004, from the State of Louisiana, the geographical area of which is more fully described as follows: Beginning at the Northeast corner of Block 5, Bay Marchand Area, having Coordinates of X = 2,354,677.73 and Y = 152,992.44; thence South 6,553.91 feet to a point on the East line of said Block 5, also being the Northeast corner of State Lease No. 15970, having Coordinates of X = 2,354,677.73 and Y = 146,438.53; thence West 1,216.74 feet along the North line of State Lease No. 15970 to its Northwest corner, also being a point on the East line of State Lease No. 6430, having Coordinates of X = 2,353,460.99 and Y = 146,438.53; thence along the boundary of State Lease No. 6430, the following courses: North 3,362.88 feet to a point having Coordinates of X = 2,353,460.99 and Y = 149,801.41 and North 10 degrees 39 minutes 51 seconds East 2,871.09 feet to a point on the North line of said Block 5 having Coordinates of X = 2,353,992.29 and Y = 152,622.91; thence Southeasterly in a straight line to a point having Coordinates of X = 2,354,070.00 and Y = 152,599.00; thence Northeasterly in a straight line to the point of beginning, containing approximately **157.93 acres**, all as more particularly outlined on a plat on file in the Office of Mineral Resources, Department of Natural Resources. All bearings, distances and coordinates are based on Louisiana Coordinate System of 1927, (North or South Zone).

NOTE: The above description of the Tract nominated for lease has been provided and corrected, where required, exclusively by the nomination party. Any mineral lease selected from this Tract and awarded by the Louisiana State Mineral Board shall be without warranty of any kind, either express, implied, or statutory, including, but not limited to, the implied warranties of merchantability and fitness for a particular purpose. Should the mineral lease awarded by the Louisiana State Mineral Board be subsequently modified, cancelled or abrogated due to the existence of conflicting leases, operating agreements, private claims or other future obligations or conditions which may affect all or any portion of the leased Tract, it shall not relieve the Lessee of the obligation to pay any bonus due thereon to the Louisiana State Mineral Board, nor shall the Louisiana State Mineral Board be obligated to refund any consideration paid by the Lessor prior to such modification, cancellation, or abrogation, including, but not limited to, bonuses, rentals and royalties.

NOTE: The State of Louisiana does hereby reserve, and this lease shall be subject to, the imprescriptible right of surface use in the nature of a servitude in favor of the Department of Natural Resources, including its Offices and Commissions, for the sole purpose of implementing, constructing, servicing and maintaining approved coastal zone management



and/or restoration projects. Utilization of any and all rights derived under this lease by the mineral lessee, its agents, successors or assigns, shall not interfere with nor hinder the reasonable surface use by the Department of Natural Resources, its Offices or Commissions, as herein above reserved.

NOTE: It appears, according to our records, that a portion of this Tract is located within the restrictive safety fairway area as set out by the Corps of Engineers, U.S. Army and/or the restrictive anchorage area as set out by the U.S. Coast Guard.

NOTE: The Department of Wildlife and Fisheries has designated certain areas in the coastal waters of the State of Louisiana as Oyster Seed Bed Areas. The exact location of those Seed Bed Areas must be obtained from the Department of Wildlife and Fisheries and any work done under a mineral lease from the State of Louisiana may necessarily be conducted in conformity with the rules and regulations promulgated by the said Department of Wildlife and Fisheries for Oyster Seed Bed Areas.

Applicant: Anchor Land & Exploration Company, L.L.C.

Bidder	Cash Payment	Price/Acre	Rental	Oil	Gas	Other



P.O.B.  
X=2,354,677.73  
Y=152,992.44

