

TRACT 36855 - Portion of Blocks 3, and 4, West Cameron Area, Revised, Cameron Parish, Louisiana

The beds and bottoms of all water bodies belonging to the State of Louisiana located in Blocks 3, and 4, West Cameron Area, Revised, together with any present lands formed by accretion to the shoreline or islands formed therein, located in Cameron Parish, Louisiana, owned by and not presently under mineral lease as of November 10, 2004, from the State of Louisiana, the geographical area of which is more fully described as follows: Beginning at a point within Block 3, West Cameron Area, Revised, having Coordinates of X = 1,393,830.00 and Y = 399,565.81; thence West 2,378.29 feet to a point on the common boundary line between said Block 3 and Block 4, West Cameron Area, having Coordinates of X = 1,391,451.71 and Y = 399,565.81; thence West 290.71 feet to the Northeast corner of State Lease No. 17636 having Coordinates of X = 1,391,161.00 and Y = 399,565.81; thence North 88 degrees 12 minutes 15 seconds West 3,088.52 feet along the North line of said State Lease No. 17636 to its Northwest corner having Coordinates of X = 1,388,074.00 and Y = 399,662.60; thence North 66 degrees 49 minutes 21 seconds West 3,961.91 feet to the Northeast corner of State Lease No. 17637, said corner also being the Southeast corner of State Lease No. 17635, having Coordinates of X = 1,384,431.86 and Y = 401,221.93; thence along the boundary of said State Lease No. 17635 the following courses: North 40 degrees 53 minutes 03 seconds East 4,580.58 feet to its Northeast corner having Coordinates of X = 1,387,430.00 and Y = 404,685.00 and North 82 degrees 20 minutes 36 seconds West 10,225.75 feet to its Northwest corner, said corner also being a point on the West line of said Block 4, having Coordinates of X = 1,377,295.42 and Y = 406,047.46; thence North 2,030.57 feet along the West line of said Block 4 to its Northwest corner having Coordinates of X = 1,377,295.42 and Y = 408,078.03; thence along the North line of said Block 4 the following courses: Northeasterly on a straight line to a point having Coordinates of X = 1,380,235 and Y = 408,500, Northeasterly along a straight line to a point having Coordinates of X = 1,383,990 and Y = 409,136, Easterly along a straight line to a point having Coordinates of X = 1,386,636 and Y = 409,216 and Easterly on a straight line to its Northeast corner, said corner also being the Northwest corner of said Block 3, having Coordinates of X = 1,391,451.71 and Y = 409,240.45; thence along the North line of said Block 3 the following courses: Easterly on a straight line to a point having Coordinates of X = 1,391,954 and Y = 409,243, Southeasterly on a straight line to a point having Coordinates of X = 1,392,000 and Y = 409,180 and Southeasterly on a straight line to a point having Coordinates of X = 1,393,830.00 and Y = 409,071.32; thence South 9,505.51 feet to the point of beginning, containing approximately **2,368.53 acres**, all as more particularly outlined on a plat on file in the Office of Mineral Resources, Department of Natural Resources. All bearings, distances and coordinates are based on Louisiana Coordinate System of 1927, (North or South Zone).

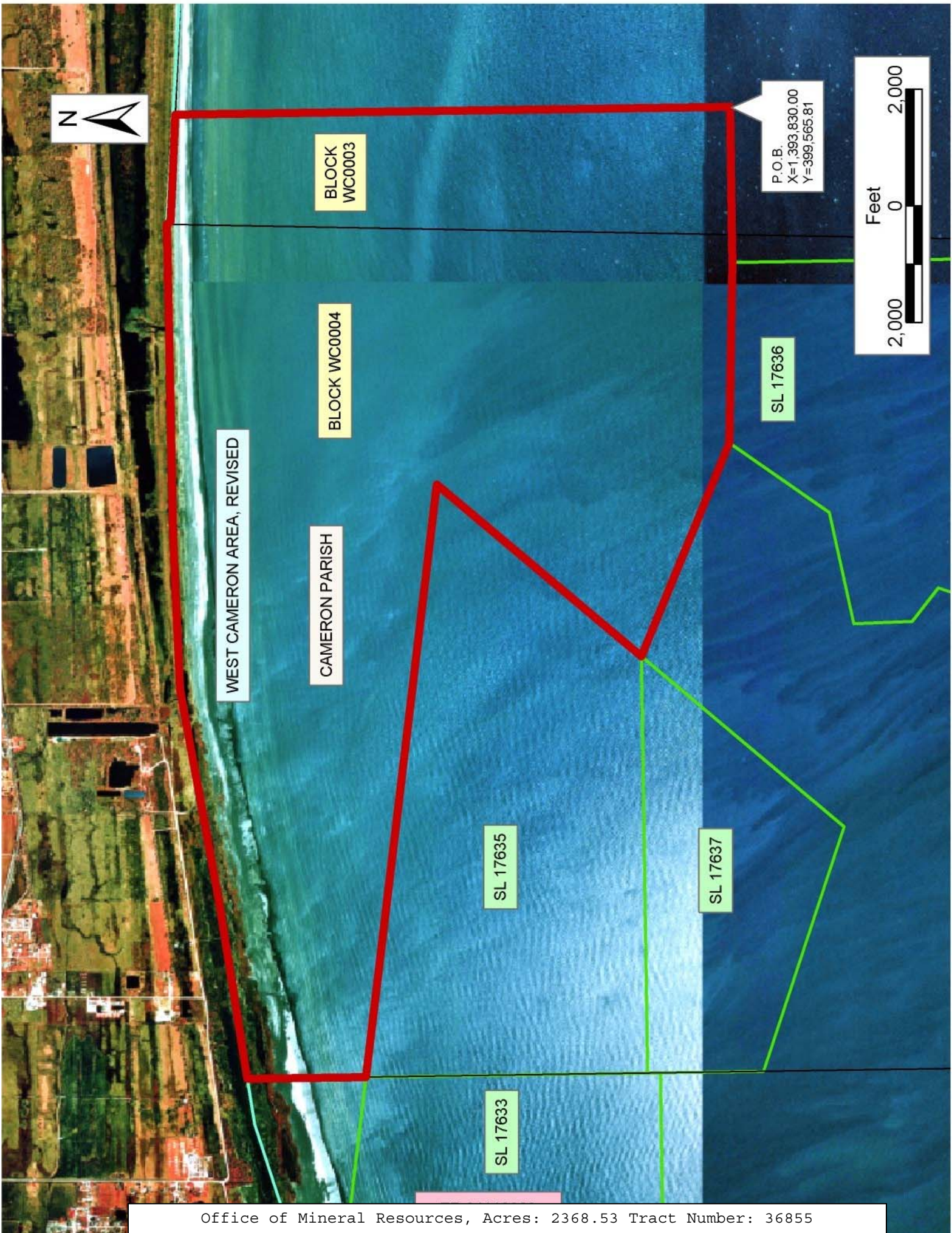
NOTE: The above description of the Tract nominated for lease has been provided and corrected, where required, exclusively by the nomination

party. Any mineral lease selected from this Tract and awarded by the Louisiana State Mineral Board shall be without warranty of any kind, either express, implied, or statutory, including, but not limited to, the implied warranties of merchantability and fitness for a particular purpose. Should the mineral lease awarded by the Louisiana State Mineral Board be subsequently modified, cancelled or abrogated due to the existence of conflicting leases, operating agreements, private claims or other future obligations or conditions which may affect all or any portion of the leased Tract, it shall not relieve the Lessee of the obligation to pay any bonus due thereon to the Louisiana State Mineral Board, nor shall the Louisiana State Mineral Board be obligated to refund any consideration paid by the Lessor prior to such modification, cancellation, or abrogation, including, but not limited to, bonuses, rentals and royalties.

NOTE: The State of Louisiana does hereby reserve, and this lease shall be subject to, the imprescriptible right of surface use in the nature of a servitude in favor of the Department of Natural Resources, including its Offices and Commissions, for the sole purpose of implementing, constructing, servicing and maintaining approved coastal zone management and/or restoration projects. Utilization of any and all rights derived under this lease by the mineral lessee, its agents, successors or assigns, shall not interfere with nor hinder the reasonable surface use by the Department of Natural Resources, its Offices or Commissions, as herein above reserved.

Applicant: Rozo Resources

Bidder	Cash Payment	Price/ Acre	Rental	Oil	Gas	Other



TRACT 36856 - Portion of Block 5, West Cameron Area, Revised, Cameron Parish, Louisiana

The beds and bottoms of all water bodies belonging to the State of Louisiana located in Block 5, West Cameron Area, Revised, together with any present lands formed by accretion to the shoreline or islands formed therein, located in Cameron Parish, Louisiana, owned by and not presently under mineral lease as of November 10, 2004, from the State of Louisiana, the geographical area of which is more fully described as follows: Beginning at a point on the East Boundary of Block 5, West Cameron Area, Revised, said point is also the Northeast Corner of State Lease No. 17633, amended, having Coordinates of X = 1,377,295.42 and Y = 406,047.46; Thence North 82 degrees 20 minutes 35 seconds West 5,079.14 feet along the North Boundary of said State Lease No. 17633 to its intersection with the Coastline as defined by the report of the Special Master and set forth in the judgment decree in June 1975 by the Supreme Court of the United States in the litigation styled United States vs. Louisiana, et al No. 9 Original, said point having Coordinates of X = 1,372,261.57 and Y = 406,724.20; Thence along said Coastline the following courses: Northeasterly in a straight line to a point having Coordinates of X = 1,372,945.00 and Y = 406,862.00; Northeasterly in a straight line to a point having Coordinates of X = 1,376,515.00 and Y = 407,966.00; Northeasterly in a straight line to a point having Coordinates of X = 1,377,295.42 and Y = 408,078.03, said point is also the intersection of said Coastline and the East Boundary of said Block 5, West Cameron Area, Revised; Thence South 2,030.57 feet along the East Boundary of said Block 5, West Cameron Area, Revised to the point of beginning, containing approximately **119.97 acres**, all as more particularly outlined on a plat on file in the Office of Mineral Resources, Department of Natural Resources. All bearings, distances and coordinates are based on Louisiana Coordinate System of 1927, (North or South Zone).

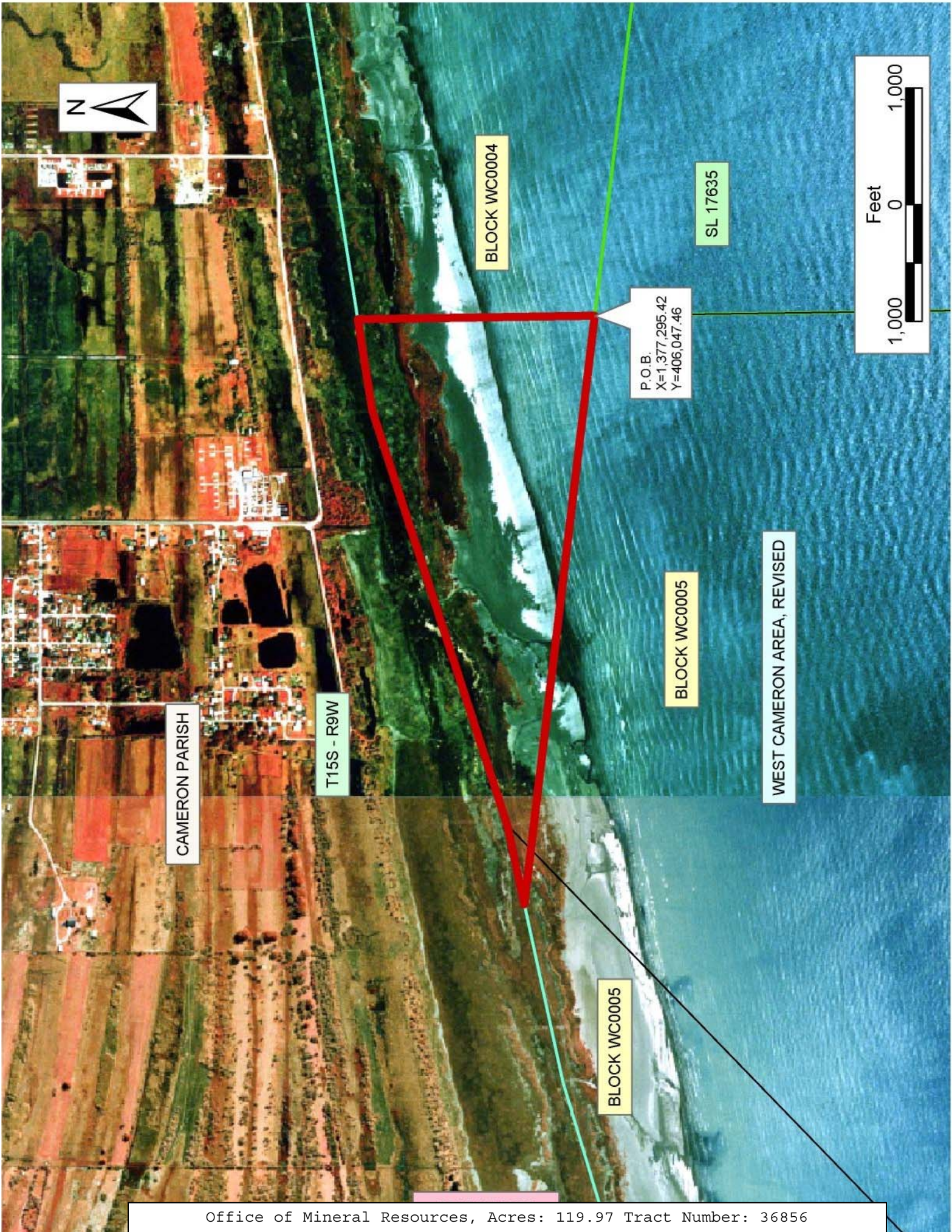
NOTE: The above description of the Tract nominated for lease has been provided and corrected, where required, exclusively by the nomination party. Any mineral lease selected from this Tract and awarded by the Louisiana State Mineral Board shall be without warranty of any kind, either express, implied, or statutory, including, but not limited to, the implied warranties of merchantability and fitness for a particular purpose. Should the mineral lease awarded by the Louisiana State Mineral Board be subsequently modified, cancelled or abrogated due to the existence of conflicting leases, operating agreements, private claims or other future obligations or conditions which may affect all or any portion of the leased Tract, it shall not relieve the Lessee of the obligation to pay any bonus due thereon to the Louisiana State Mineral Board, nor shall the Louisiana State Mineral Board be obligated to refund any consideration paid by the Lessor prior to such modification, cancellation, or abrogation, including, but not limited to, bonuses, rentals and royalties.

NOTE: The State of Louisiana does hereby reserve, and this lease shall be subject to, the imprescriptible right of surface use in the nature of a

servitude in favor of the Department of Natural Resources, including its Offices and Commissions, for the sole purpose of implementing, constructing, servicing and maintaining approved coastal zone management and/or restoration projects. Utilization of any and all rights derived under this lease by the mineral lessee, its agents, successors or assigns, shall not interfere with nor hinder the reasonable surface use by the Department of Natural Resources, its Offices or Commissions, as herein above reserved.

Applicant: Energy Partners, Inc.

Bidder	Cash Payment	Price/ Acre	Rental	Oil	Gas	Other



TRACT 36857 - Portion of Block 5, West Cameron Area, Revised, Cameron Parish, Louisiana

The beds and bottoms of all water bodies belonging to the State of Louisiana located in Block 5, West Cameron Area, Revised, together with any present lands formed by accretion to the shoreline or islands formed therein, located in Cameron Parish, Louisiana, owned by and not presently under mineral lease as of November 10, 2004, from the State of Louisiana, the geographical area of which is more fully described as follows: Beginning at a point on the East Boundary of Block 5, West Cameron Area, Revised, having Coordinates of X = 1,377,295.42 and Y = 397,181.00; Thence West 15,359.80 feet to a point on the West Boundary of said Block 5 having Coordinates of X = 1,361,935.62 and Y = 397,181.00; Thence North 5,664.97 feet along the West Boundary of said Block 5 to a point on the Coastline as defined by the report of the Special Master and set forth in the judgment decree in June 1975 by the Supreme Court of the United States in the litigation styled United States vs. Louisiana, et al No. 9 Original, having Coordinates of X = 1,361,935.62 and Y = 402,845.97; Thence along said Coastline the following courses: Northeasterly in a straight line to a point having Coordinates of X = 1,362,688.00 and Y = 403,999.00; Northeasterly in a straight line to a point having Coordinates of X = 1,366,193.00 and Y = 405,206.00; Northeasterly in a straight line to a point having Coordinates of X = 1,367,814.00 and Y = 405,588.00; Northeasterly in a straight line to the Northwest Corner of State Lease No. 17633, as amended, having Coordinates of X = 1,368,196.28 and Y = 405,696.38; Thence along the boundary of said State Lease No. 17633 the following courses: South 33 degrees 16 minutes 05 seconds West 3,234.46 feet to a point having Coordinates of X = 1,366,422.00 and Y = 402,992.00; South 70 degrees 56 minutes 28 seconds East 6,100.35 feet to the Northwest Corner of State Lease No. 17634, having Coordinates of X = 1,372,187.95 and Y = 401,000.00; Thence South 70 degrees 56 minutes 28 seconds East 5,403.68 feet along the South Boundary of said State Lease No. 17634 to its intersection with the East Boundary of said Block 5, having Coordinates of X = 1,377,295.42 and Y = 399,235.49; Thence South 2,054.49 feet along the East boundary of said Block 5 to the point of beginning, containing approximately **1,774.88 acres**, all as more particularly outlined on a plat on file in the Office of Mineral Resources, Department of Natural Resources. All bearings, distances and coordinates are based on Louisiana Coordinate System of 1927, (North or South Zone).

NOTE: The above description of the Tract nominated for lease has been provided and corrected, where required, exclusively by the nomination party. Any mineral lease selected from this Tract and awarded by the Louisiana State Mineral Board shall be without warranty of any kind, either express, implied, or statutory, including, but not limited to, the implied warranties of merchantability and fitness for a particular purpose. Should the mineral lease awarded by the Louisiana State Mineral Board be subsequently modified, cancelled or abrogated due to the existence of conflicting leases, operating agreements, private claims or other future obligations or conditions which may affect all or any portion

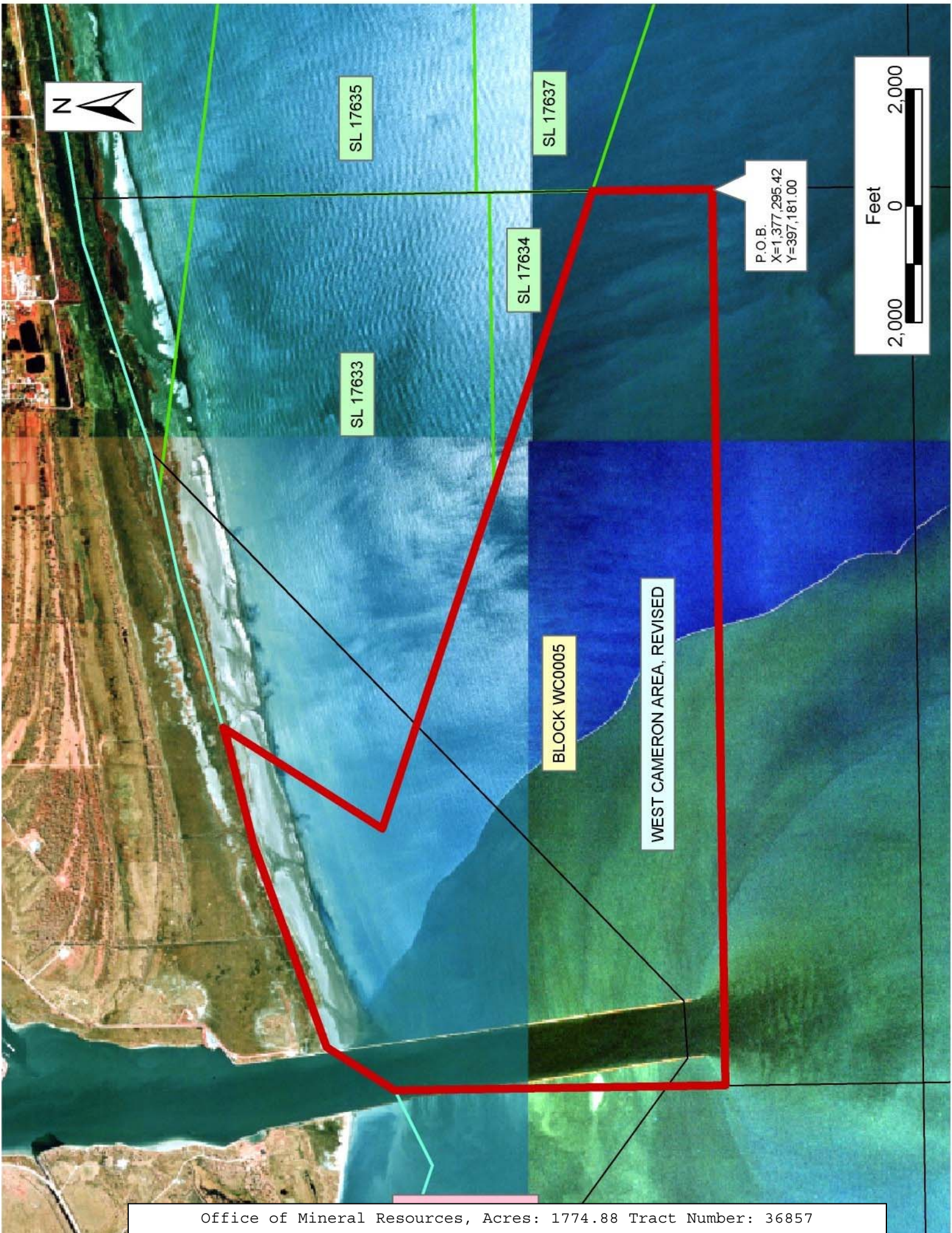
of the leased Tract, it shall not relieve the Lessee of the obligation to pay any bonus due thereon to the Louisiana State Mineral Board, nor shall the Louisiana State Mineral Board be obligated to refund any consideration paid by the Lessor prior to such modification, cancellation, or abrogation, including, but not limited to, bonuses, rentals and royalties.

NOTE: The State of Louisiana does hereby reserve, and this lease shall be subject to, the imprescriptible right of surface use in the nature of a servitude in favor of the Department of Natural Resources, including its Offices and Commissions, for the sole purpose of implementing, constructing, servicing and maintaining approved coastal zone management and/or restoration projects. Utilization of any and all rights derived under this lease by the mineral lessee, its agents, successors or assigns, shall not interfere with nor hinder the reasonable surface use by the Department of Natural Resources, its Offices or Commissions, as herein above reserved.

NOTE: It appears, according to our records, that a portion of this Tract is located within the restrictive safety fairway area as set out by the Corps of Engineers, U.S. Army and/or the restrictive anchorage area as set out by the U.S. Coast Guard.

Applicant: Energy Partners, Inc.

Bidder	Cash Payment	Price/ Acre	Rental	Oil	Gas	Other



TRACT 36858 - Portion of Block 6, West Cameron Area, Revised, Cameron Parish, Louisiana

The beds and bottoms of all water bodies belonging to the State of Louisiana located in Block 6, West Cameron Area, Revised, together with any present lands formed by accretion to the shoreline or islands formed therein, located in Cameron Parish, Louisiana, owned by and not presently under mineral lease as of November 10, 2004, from the State of Louisiana, the geographical area of which is more fully described as follows: Beginning at a point on the East Boundary of Block 6, West Cameron Area, Revised, having Coordinates of X = 1,361,935.62 and Y = 397,181.00; Thence South 78 degrees 00 minutes 26 seconds West 8,465.39 feet to a point having Coordinates of X = 1,353,655.00 and Y = 395,422.00; Thence North 25 degrees 22 minutes 33 seconds East 8,701.29 feet to a point on the Coastline as defined by the report of the Special Master and set forth in the judgment decree in June 1975 by the Supreme Court of the United States in the litigation styled United States vs. Louisiana, et al No. 9 Original, having Coordinates of X = 1,357,383.96 and Y = 403,283.76; Thence along said Coastline the following courses: Northeasterly in a straight line to a point having Coordinates of X = 1,357,913.00 and Y = 403,182.00; Northeasterly in a straight line to a point having Coordinates of X = 1,360,638.00 and Y = 402,221.00; Northeasterly in a straight line to a point having Coordinates of X = 1,361,811.00 and Y = 402,655.00; Northeasterly in a straight line to its intersection with the East Boundary of said block 6, having Coordinates of X = 1,361,935.62 and Y = 402,845.97; Thence South 5,664.97 feet along the East Boundary of said Block 6 to the point of beginning, containing approximately **929.46 acres**, all as more particularly outlined on a plat on file in the Office of Mineral Resources, Department of Natural Resources. All bearings, distances and coordinates are based on Louisiana Coordinate System of 1927, (North or South Zone).

NOTE: The above description of the Tract nominated for lease has been provided and corrected, where required, exclusively by the nomination party. Any mineral lease selected from this Tract and awarded by the Louisiana State Mineral Board shall be without warranty of any kind, either express, implied, or statutory, including, but not limited to, the implied warranties of merchantability and fitness for a particular purpose. Should the mineral lease awarded by the Louisiana State Mineral Board be subsequently modified, cancelled or abrogated due to the existence of conflicting leases, operating agreements, private claims or other future obligations or conditions which may affect all or any portion of the leased Tract, it shall not relieve the Lessee of the obligation to pay any bonus due thereon to the Louisiana State Mineral Board, nor shall the Louisiana State Mineral Board be obligated to refund any consideration paid by the Lessor prior to such modification, cancellation, or abrogation, including, but not limited to, bonuses, rentals and royalties.

NOTE: The State of Louisiana does hereby reserve, and this lease shall be subject to, the imprescriptible right of surface use in the nature of a

servitude in favor of the Department of Natural Resources, including its Offices and Commissions, for the sole purpose of implementing, constructing, servicing and maintaining approved coastal zone management and/or restoration projects. Utilization of any and all rights derived under this lease by the mineral lessee, its agents, successors or assigns, shall not interfere with nor hinder the reasonable surface use by the Department of Natural Resources, its Offices or Commissions, as herein above reserved.

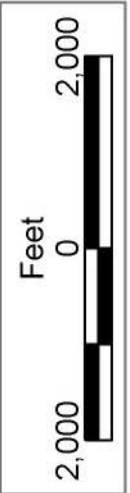
NOTE: It appears, according to our records, that a portion of this Tract is located within the restrictive safety fairway area as set out by the Corps of Engineers, U.S. Army and/or the restrictive anchorage area as set out by the U.S. Coast Guard.

Applicant: Energy Partners, Inc.

Bidder	Cash Payment	Price/ Acre	Rental	Oil	Gas	Other



SL 17633



P.O.B.
X=1,361,935.62
Y=397,181.00

BLOCK WC0006

WEST CAMERON AREA, REVISED

CAMERON PARISH

TRACT 36859 - Portion of Blocks 27, 28, 3, and 4, West Cameron Area, Revised, Cameron Parish, Louisiana

The beds and bottoms of all water bodies belonging to the State of Louisiana located in that portion of Blocks 27, 28, 3, and 4, West Cameron Area, Revised, together with any present lands formed by accretion to the shoreline, or islands formed therein, located in Cameron Parish, Louisiana, and not presently under mineral lease as of November 10, 2004, from the State of Louisiana, the geographical area of which is more fully described as follows: Beginning at a point within Block 3, West Cameron Area, Revised, having Coordinates of $X = 1,393,830.00$ and $Y = 399,565.81$; thence South 3,800.81 feet to the Northwest corner of State Lease No. 17842 having Coordinates of $X = 1,393,830.00$ and $Y = 395,765.00$; thence South 1,974.76 feet along the West line of said State Lease No. 17842 to its Southwest corner, said corner also being the Northwest corner of State Lease No. 17845, having Coordinates of $X = 1,393,830.00$ and $Y = 393,790.24$; thence along the boundary of said State Lease No. 17845 the following courses: South 1,590.24 feet to a point having Coordinates of $X = 1,393,830.00$ and $Y = 392,200.00$, West 2,378.29 feet to a point on the West line of Block 28, West Cameron Area, having Coordinates of $X = 1,391,451.71$ and $Y = 392,200.00$ and South 1,260.55 feet along the West line of said Block 28 to the most Westerly Southwest corner of said State Lease No. 17845, said corner also being a point on the Three Mile Decree line derived from the June 16, 1975 Decree in the United States vs. Louisiana No. 9 Original, having Coordinates of $X = 1,391,451.71$ and $Y = 390,939.45$; thence along said Three Mile Decree line the following courses: Westerly along a straight line to a point within Block 27, having Coordinates of $X = 1,390,919$ and $Y = 390,971$, Westerly along an arc with a center point at $X = 1,392,000$ and $Y = 409,180$ and a radius of 18,240.60 feet to a point having Coordinates of $X = 1,390,575$ and $Y = 390,995$, Westerly along a straight line to a point having Coordinates of $X = 1,386,958$ and $Y = 390,977$, Westerly along a straight line to a point having Coordinates of $X = 1,385,797$ and $Y = 390,942$, Southwesterly along a straight line to a point having Coordinates of $X = 1,383,281$ and $Y = 390,516$, Southwesterly along an arc with a center point at $X = 1,380,235$ and $Y = 408,500$ and a radius of 18,240.60 feet to a point having Coordinates of $X = 1,382,827$ and $Y = 390,444$ and Southwesterly along a straight line to a point having Coordinates of $X = 1,381,465.00$ and $Y = 390,248.92$; thence North 3,541.32 feet to a point on the North line of said Block 27, said point also located on the South line of Block 4, having Coordinates of $X = 1,381,465.00$ and $Y = 393,790.24$; thence North 4,004.76 feet to the Southeast corner of State Lease No. 17637 having Coordinates of $X = 1,381,465.00$ and $Y = 397,795.00$; thence North 40 degrees 53 minutes 04 seconds East 4,532.78 feet along the Eastern boundary of said State Lease No. 17637 to its Northeast corner, said corner also being the Southeast corner of State Lease No. 17635, having Coordinates of $X = 1,384,431.86$ and $Y = 401,221.93$; thence South 66 degrees 49 minutes 21 seconds East 3,961.91 feet to the most Northerly Northwest corner of State Lease No. 17636 having Coordinates of $X = 1,388,074.00$ and $Y = 399,662.60$; thence along the boundaries of said State

Lease No. 17636 the following courses: South 35 degrees 40 minutes 29 seconds West 2,088.53 feet to a point having Coordinates of X = 1,386,856.00 and Y = 397,966.00, South 78 degrees 27 minutes 14 seconds West 1,951.49 feet to a point having Coordinates of X = 1,384,944.00 and Y = 397,575.40, South 01 degrees 12 minutes 10 seconds East 1,000.52 feet to a point having Coordinates of X = 1,384,965.00 and Y = 396,575.10, South 51 degrees 08 minutes 58 seconds East 726.77 feet to a point having Coordinates of X = 1,385,531.00 and Y = 396,119.20; South 18 degrees 46 minutes 55 seconds West 1,080.86 feet to a point having Coordinates of X = 1,385,183.00 and Y = 395,095.90, South 41 degrees 53 minutes 28 seconds East 584.08 feet to a point having Coordinates of X = 1,385,573.00 and Y = 394,661.10, South 80 degrees 17 minutes 04 seconds East 1,413.27 feet to a point having Coordinates of X = 1,386,966.00 and Y = 394,422.60, North 61 degrees 52 minutes 53 seconds East 1,428.61 feet to a point having Coordinates of X = 1,388,226.00 and Y = 395,095.90, North 82 degrees 08 minutes 43 seconds East 2,962.80 feet to a point having Coordinates of X = 1,391,161.00 and Y = 395,500.80 and North 4,065.01 to its Northeast corner having Coordinates of X = 1,391,161.00 and Y = 399,565.81; thence East 290.71 feet to a point on the East line of said Block 4 having Coordinates of X = 1,391,451.71 and Y = 399,565.81; thence East 2,378.29 feet to the point of beginning, containing **1,939.02 acres, LESS AND EXCEPT** that portion thereof, if any, lying seaward of the line three nautical miles from the coast line of Louisiana, as said three mile line has been decreed by the Supreme Court of the United States, as determined by a Special Master appointed therein, in litigation styled **United States v. State of Louisiana et al No. 9 Original**, in 1975, all as more particularly outlined on a plat in the Office of Mineral Resources, Department of Natural Resources. All bearings, distances and coordinates are based on the Louisiana Coordinate System of 1927, (South Zone).

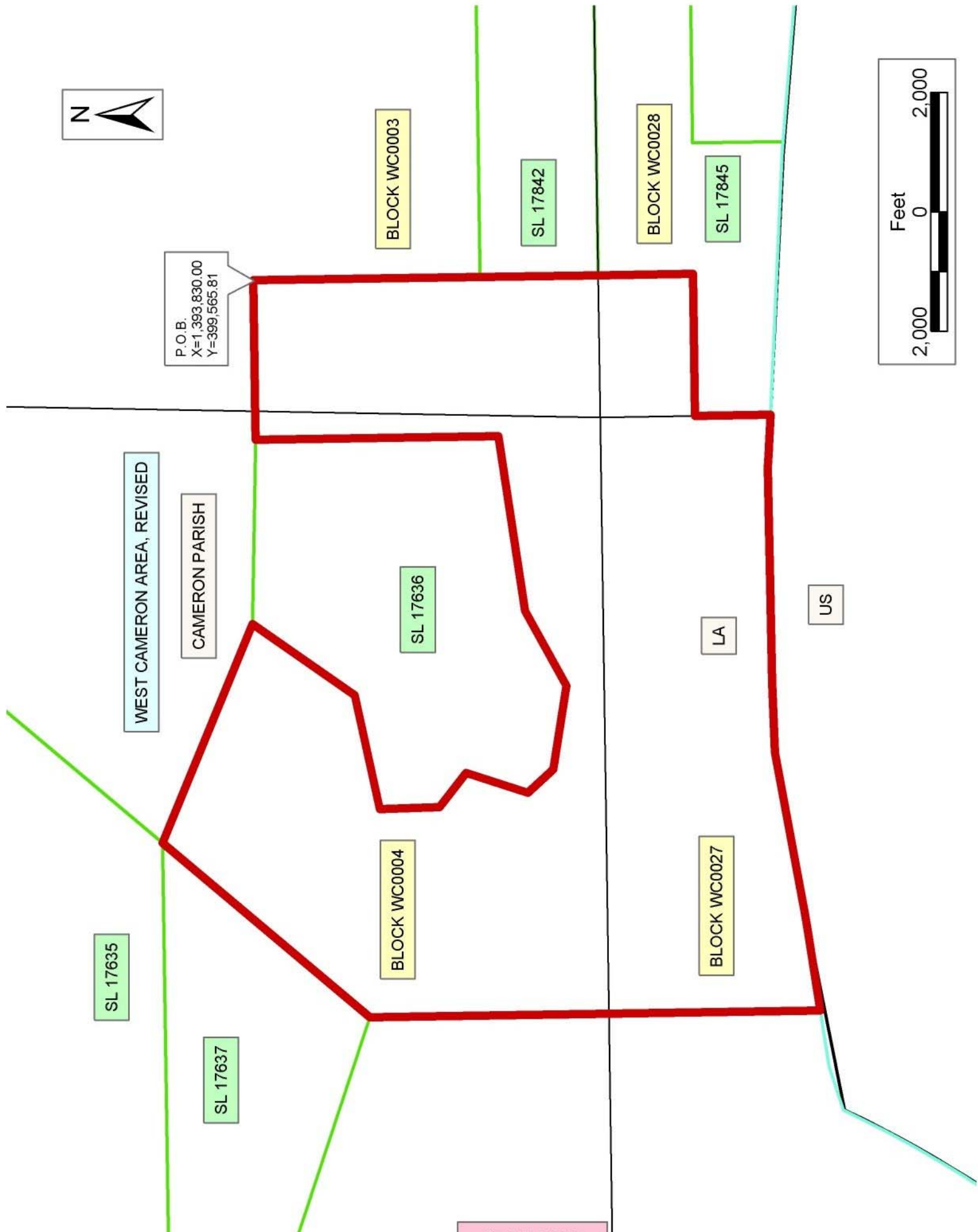
NOTE: The above description of the Tract nominated for lease has been provided and corrected, where required, exclusively by the nomination party. Any mineral lease selected from this Tract and awarded by the Louisiana State Mineral Board shall be without warranty of any kind, either express, implied, or statutory, including, but not limited to, the implied warranties of merchantability and fitness for a particular purpose. Should the mineral lease awarded by the Louisiana State Mineral Board be subsequently modified, cancelled or abrogated due to the existence of conflicting leases, operating agreements, private claims or other future obligations or conditions which may affect all or any portion of the leased Tract, it shall not relieve the Lessee of the obligation to pay any bonus due thereon to the Louisiana State Mineral Board, nor shall the Louisiana State Mineral Board be obligated to refund any consideration paid by the Lessor prior to such modification, cancellation, or abrogation, including, but not limited to, bonuses, rentals and royalties.

NOTE: The State of Louisiana does hereby reserve, and this lease shall be subject to, the imprescriptible right of surface use in the nature of a servitude in favor of the Department of Natural Resources, including its

Offices and Commissions, for the sole purpose of implementing, constructing, servicing and maintaining approved coastal zone management and/or restoration projects. Utilization of any and all rights derived under this lease by the mineral lessee, its agents, successors or assigns, shall not interfere with nor hinder the reasonable surface use by the Department of Natural Resources, its Offices or Commissions, as herein above reserved.

Applicant: Rozo Resources

Bidder	Cash Payment	Price/ Acre	Rental	Oil	Gas	Other



TRACT 36860 - Portion of Block 11, West Cameron Area, Revised, Cameron Parish, Louisiana

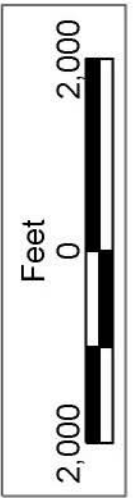
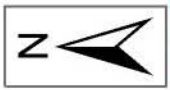
The beds and bottoms of all water bodies belonging to the State of Louisiana located in Block 11, West Cameron Area, Revised, together with any present lands formed by accretion to the shoreline or islands formed therein, located in Cameron Parish, Louisiana, owned by and not presently under mineral lease as of November 10, 2004, from the State of Louisiana, the geographical area of which is more fully described as follows: Beginning at a point on the East line of Block 11, West Cameron Area, Revised, having Coordinates of X = 1,288,145.38 and Y = 401,169.00; thence South 2,922.55 feet along the East line of Block 11 to a point having Coordinates of X = 1,288,145.38 and Y = 398,246.45; thence North 42 degrees 01 minutes 18 seconds West 2,987.70 feet to a point having Coordinates of X = 1,286,145.38 and Y = 400,465.99; thence North 703.01 feet to a point having Coordinates of X = 1,286,145.38 and Y = 401,169.00; thence East 2,000.00 feet to the point of beginning, containing approximately **83.23 acres**, all as more particularly outlined on a plat on file in the Office of Mineral Resources, Department of Natural Resources. All bearings, distances and coordinates are based on Louisiana Coordinate System of 1927, (North or South Zone).

NOTE: The above description of the Tract nominated for lease has been provided and corrected, where required, exclusively by the nomination party. Any mineral lease selected from this Tract and awarded by the Louisiana State Mineral Board shall be without warranty of any kind, either express, implied, or statutory, including, but not limited to, the implied warranties of merchantability and fitness for a particular purpose. Should the mineral lease awarded by the Louisiana State Mineral Board be subsequently modified, cancelled or abrogated due to the existence of conflicting leases, operating agreements, private claims or other future obligations or conditions which may affect all or any portion of the leased Tract, it shall not relieve the Lessee of the obligation to pay any bonus due thereon to the Louisiana State Mineral Board, nor shall the Louisiana State Mineral Board be obligated to refund any consideration paid by the Lessor prior to such modification, cancellation, or abrogation, including, but not limited to, bonuses, rentals and royalties.

NOTE: The State of Louisiana does hereby reserve, and this lease shall be subject to, the imprescriptible right of surface use in the nature of a servitude in favor of the Department of Natural Resources, including its Offices and Commissions, for the sole purpose of implementing, constructing, servicing and maintaining approved coastal zone management and/or restoration projects. Utilization of any and all rights derived under this lease by the mineral lessee, its agents, successors or assigns, shall not interfere with nor hinder the reasonable surface use by the Department of Natural Resources, its Offices or Commissions, as herein above reserved.

Applicant: Patrick L. Donohue Petroleum Properties, Inc.

Bidder	Cash Payment	Price/ Acre	Rental	Oil	Gas	Other



P.O.B.
X=1,288,145.38
Y=401,169.00

SL 16803

SL 17307

BLOCK WC0010

CAMERON PARISH

WEST CAMERON AREA, REVISED

BLOCK WC0011

TRACT 36861 - Portion of Block 10, West Cameron Area, Revised, Cameron Parish, Louisiana

The beds and bottoms of all water bodies belonging to the State of Louisiana located in Block 10, West Cameron Area, Revised, together with any present lands formed by accretion to the shoreline or islands formed therein, located in Cameron Parish, Louisiana, owned by and not presently under mineral lease as of November 10, 2004, from the State of Louisiana, the geographical area of which is more fully described as follows: Beginning at a point on the West line of Block 10, West Cameron Area, Revised, also being the Southwest corner of State Lease No. 16803 and the Northwest corner of State Lease No. 17307, having Coordinates of X = 1,288,145.38 and Y = 401,169.27; thence South 39 degrees 51 minutes 49 seconds East 7,776.80 feet on the West boundary of State Lease No. 17307 to its Southwest corner having Coordinates of X = 1,293,130.00 and Y = 395,200.00; thence North 58 degrees 33 minutes 57 seconds West 5,842.00 feet to a point on the West line of Block 10 having Coordinates of X = 1,288,145.38 and Y = 398,246.72; thence North 2,922.55 feet on the West line of Block 10 to the point of beginning, containing approximately **167.22 acres**, all as more particularly outlined on a plat on file in the Office of Mineral Resources, Department of Natural Resources. All bearings, distances and coordinates are based on Louisiana Coordinate System of 1927, (North or South Zone).

NOTE: The above description of the Tract nominated for lease has been provided and corrected, where required, exclusively by the nomination party. Any mineral lease selected from this Tract and awarded by the Louisiana State Mineral Board shall be without warranty of any kind, either express, implied, or statutory, including, but not limited to, the implied warranties of merchantability and fitness for a particular purpose. Should the mineral lease awarded by the Louisiana State Mineral Board be subsequently modified, cancelled or abrogated due to the existence of conflicting leases, operating agreements, private claims or other future obligations or conditions which may affect all or any portion of the leased Tract, it shall not relieve the Lessee of the obligation to pay any bonus due thereon to the Louisiana State Mineral Board, nor shall the Louisiana State Mineral Board be obligated to refund any consideration paid by the Lessor prior to such modification, cancellation, or abrogation, including, but not limited to, bonuses, rentals and royalties.

NOTE: The State of Louisiana does hereby reserve, and this lease shall be subject to, the imprescriptible right of surface use in the nature of a servitude in favor of the Department of Natural Resources, including its Offices and Commissions, for the sole purpose of implementing, constructing, servicing and maintaining approved coastal zone management and/or restoration projects. Utilization of any and all rights derived under this lease by the mineral lessee, its agents, successors or assigns, shall not interfere with nor hinder the reasonable surface use by the Department of Natural Resources, its Offices or Commissions, as herein above reserved.

Applicant: Patrick L. Donohue Petroleum Properties, Inc.

Bidder	Cash Payment	Price/ Acre	Rental	Oil	Gas	Other



BLOCK WC0010

SL 17307

SL 16803

P.O.B.
X=1,288,145.38
Y=401,169.27

BLOCK WC0011

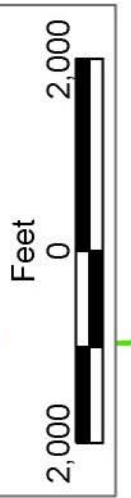
CAMERON PARISH

WEST CAMERON AREA, REVISED

BLOCK WC0021

SL 17774

BLOCK WC0020



TRACT 36862 - Portion of Block 4, West Cameron Area, Revised, Cameron Parish, Louisiana

The beds and bottoms of all water bodies belonging to the State of Louisiana located in Block 4, West Cameron Area, Revised, together with any present lands formed by accretion to the shoreline or islands formed therein, located in Cameron Parish, Louisiana, owned by and not presently under mineral lease as of November 10, 2004, from the State of Louisiana, the geographical area of which is more fully described as follows: Beginning at a point on the South Boundary of Block 4, West Cameron Area, Revised, having Coordinates of X = 1,381,465.00 and Y = 393,790.24; Thence West 4,169.58 feet along the South Boundary of said Block 4, West Cameron Area, Revised, to its Southwest Corner having Coordinates of X = 1,377,295.42 and Y = 393,790.24; Thence North 5,445.25 feet along the West Boundary of said Block 4, West Cameron Area, Revised, to its intersection with the South Boundary of State Lease No. 17637, as amended, point having Coordinates of X = 1,377,295.42 and Y = 399,235.49; Thence South 70 degrees 56 minutes 28 seconds East 4,411.40 feet along the South Boundary of said State Lease No. 17637, as amended, point having Coordinates of X = 1,381,465.00 and Y = 397,795.00; Thence South 4,004.76 feet to a point of beginning, containing approximately **452.28 acres**, all as more particularly outlined on a plat on file in the Office of Mineral Resources, Department of Natural Resources. All bearings, distances and coordinates are based on Louisiana Coordinate System of 1927, (North or South Zone).

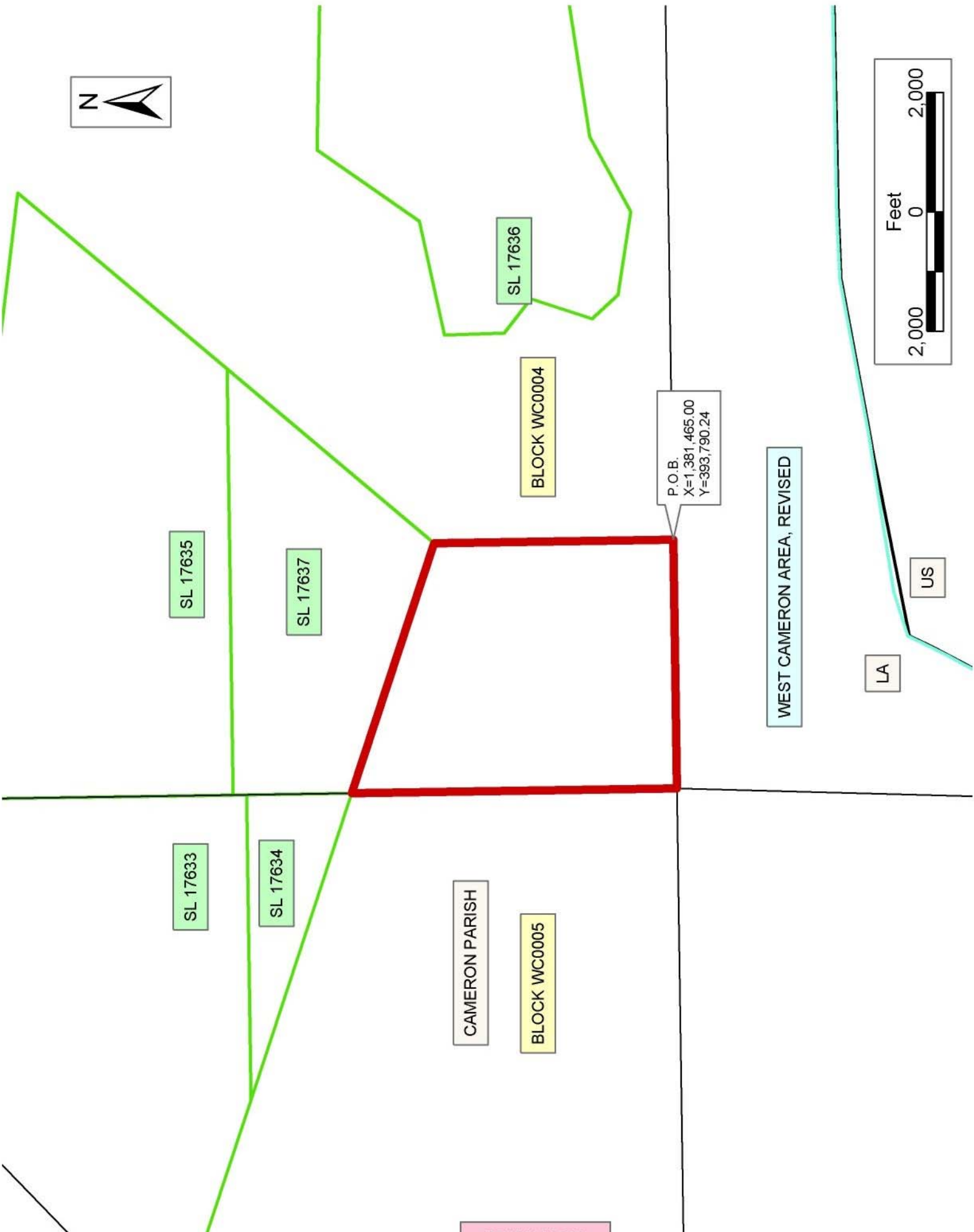
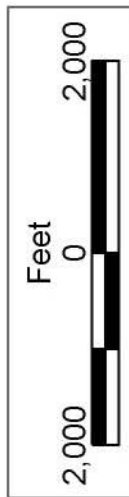
NOTE: The above description of the Tract nominated for lease has been provided and corrected, where required, exclusively by the nomination party. Any mineral lease selected from this Tract and awarded by the Louisiana State Mineral Board shall be without warranty of any kind, either express, implied, or statutory, including, but not limited to, the implied warranties of merchantability and fitness for a particular purpose. Should the mineral lease awarded by the Louisiana State Mineral Board be subsequently modified, cancelled or abrogated due to the existence of conflicting leases, operating agreements, private claims or other future obligations or conditions which may affect all or any portion of the leased Tract, it shall not relieve the Lessee of the obligation to pay any bonus due thereon to the Louisiana State Mineral Board, nor shall the Louisiana State Mineral Board be obligated to refund any consideration paid by the Lessor prior to such modification, cancellation, or abrogation, including, but not limited to, bonuses, rentals and royalties.

NOTE: The State of Louisiana does hereby reserve, and this lease shall be subject to, the imprescriptible right of surface use in the nature of a servitude in favor of the Department of Natural Resources, including its Offices and Commissions, for the sole purpose of implementing, constructing, servicing and maintaining approved coastal zone management and/or restoration projects. Utilization of any and all rights derived under this lease by the mineral lessee, its agents, successors or assigns, shall not interfere with nor hinder the reasonable surface use by the

Department of Natural Resources, its Offices or Commissions, as herein above reserved.

Applicant: Energy Partners, Inc.

Bidder	Cash Payment	Price/ Acre	Rental	Oil	Gas	Other



TRACT 36863 - Portion of Block 5, West Cameron Area, Revised, Cameron Parish, Louisiana

The beds and bottoms of all water bodies belonging to the State of Louisiana located in Block 5, West Cameron Area, Revised, together with any present lands formed by accretion to the shoreline or islands formed therein, located in Cameron Parish, Louisiana, owned by and not presently under mineral lease as of November 10, 2004, from the State of Louisiana, the geographical area of which is more fully described as follows: Beginning at the Southeast Corner of Block 5, West Cameron Area, Revised, having Coordinates of X = 1,377,295.42 and Y = 393,790.24; Thence West 15,359.80 feet along the South Boundary of said Block 5 to its Southwest Corner, having Coordinates of X = 1,361,935.62 and Y = 393,790.24; Thence North 3,390.76 feet along the West Boundary of said Block 5 to a point having Coordinates of X = 1,361,935.62 and Y = 397,181.00; Thence East 15,359.80 feet to a point on the East Boundary of said Block 5 having Coordinates of X = 1,377,295.42 and Y = 397,181.00; Thence South 3,390.76 feet to the point of beginning, containing approximately **1,195.62 acres**, all as more particularly outlined on a plat on file in the Office of Mineral Resources, Department of Natural Resources. All bearings, distances and coordinates are based on Louisiana Coordinate System of 1927, (North or South Zone).

NOTE: The above description of the Tract nominated for lease has been provided and corrected, where required, exclusively by the nomination party. Any mineral lease selected from this Tract and awarded by the Louisiana State Mineral Board shall be without warranty of any kind, either express, implied, or statutory, including, but not limited to, the implied warranties of merchantability and fitness for a particular purpose. Should the mineral lease awarded by the Louisiana State Mineral Board be subsequently modified, cancelled or abrogated due to the existence of conflicting leases, operating agreements, private claims or other future obligations or conditions which may affect all or any portion of the leased Tract, it shall not relieve the Lessee of the obligation to pay any bonus due thereon to the Louisiana State Mineral Board, nor shall the Louisiana State Mineral Board be obligated to refund any consideration paid by the Lessor prior to such modification, cancellation, or abrogation, including, but not limited to, bonuses, rentals and royalties.

NOTE: The State of Louisiana does hereby reserve, and this lease shall be subject to, the imprescriptible right of surface use in the nature of a servitude in favor of the Department of Natural Resources, including its Offices and Commissions, for the sole purpose of implementing, constructing, servicing and maintaining approved coastal zone management and/or restoration projects. Utilization of any and all rights derived under this lease by the mineral lessee, its agents, successors or assigns, shall not interfere with nor hinder the reasonable surface use by the Department of Natural Resources, its Offices or Commissions, as herein above reserved.

NOTE: It appears, according to our records, that a portion of this Tract is located within the restrictive safety fairway area as set out by the Corps of Engineers, U.S. Army and/or the restrictive anchorage area as set out by the U.S. Coast Guard.

Applicant: Energy Partners, Inc.

Bidder	Cash Payment	Price/ Acre	Rental	Oil	Gas	Other



SL 17635

SL 17637

SL 17634

SL 17633

CAMERON PARISH

BLOCK WC0005

WEST CAMERON AREA, REVISED

BLOCK WC0026

P.O.B.
X=1,377,295.42
Y=393,790.24



TRACT 36864 - Portion of Blocks 26, and 27, West Cameron Area, Revised, Cameron Parish, Louisiana

The beds and bottoms of all water bodies belonging to the State of Louisiana located in Blocks 26, and 27, West Cameron Area, Revised, together with any present lands formed by accretion to the shoreline or islands formed therein, located in Cameron Parish, Louisiana, owned by and not presently under mineral lease as of November 10, 2004, from the State of Louisiana, the geographical area of which is more fully described as follows: Beginning at a on the North boundary of Block 27, West Cameron Area, Revised, having Coordinates of X = 1,381,465.00 and Y = 393,790.24; Thence South 3,541.32 feet to a point on the Three mile line as established by the 1975 Court Decree, having Coordinates of X = 1,381,465.00 and Y = 390,248.92; Thence along said Three mile line the following courses: Southwesterly in a straight line to a point having Coordinates of X = 1,380,530.00 and Y = 390,115.00; Southwesterly in a straight line to a point having Coordinates of X = 1,379,793.00 and Y = 389,887.00; Southwesterly on an arc having a radius of 18,240.60 feet and a center at X = 1,363,392.00 and Y = 397,870.00 to a point having Coordinates of X = 1,376,693.66 and Y = 385,388.60; Thence North 8,401.64 feet along the West boundary of said Block 27, West Cameron Area, Revised, to its Northwest corner having Coordinates of X = 1,376,693.66 and Y = 393,790.24; Thence East 4,771.34 feet along the North boundary of said Block 27 to the point of beginning, containing approximately **596.53 acres, LESS AND EXCEPT** that portion thereof, if any, lying seaward of the line three nautical miles from the coast line of Louisiana, as said three mile line has been decreed by the Supreme Court of the United States, as determined by a Special Master appointed therein, in litigation styled **United States v. State of Louisiana et al No. 9 Original**, in 1975, all as more particularly outlined on a plat in the Office of Mineral Resources, Department of Natural Resources. All bearings, distances and coordinates are based on the Louisiana Coordinate System of 1927, (South Zone).

NOTE: The above description of the Tract nominated for lease has been provided and corrected, where required, exclusively by the nomination party. Any mineral lease selected from this Tract and awarded by the Louisiana State Mineral Board shall be without warranty of any kind, either express, implied, or statutory, including, but not limited to, the implied warranties of merchantability and fitness for a particular purpose. Should the mineral lease awarded by the Louisiana State Mineral Board be subsequently modified, cancelled or abrogated due to the existence of conflicting leases, operating agreements, private claims or other future obligations or conditions which may affect all or any portion of the leased Tract, it shall not relieve the Lessee of the obligation to pay any bonus due thereon to the Louisiana State Mineral Board, nor shall the Louisiana State Mineral Board be obligated to refund any consideration paid by the Lessor prior to such modification, cancellation, or abrogation, including, but not limited to, bonuses, rentals and royalties.

NOTE: The State of Louisiana does hereby reserve, and this lease shall be subject to, the imprescriptible right of surface use in the nature of a servitude in favor of the Department of Natural Resources, including its Offices and Commissions, for the sole purpose of implementing, constructing, servicing and maintaining approved coastal zone management and/or restoration projects. Utilization of any and all rights derived under this lease by the mineral lessee, its agents, successors or assigns, shall not interfere with nor hinder the reasonable surface use by the Department of Natural Resources, its Offices or Commissions, as herein above reserved.

Applicant: Energy Partners, Inc.

Bidder	Cash Payment	Price/ Acre	Rental	Oil	Gas	Other

