

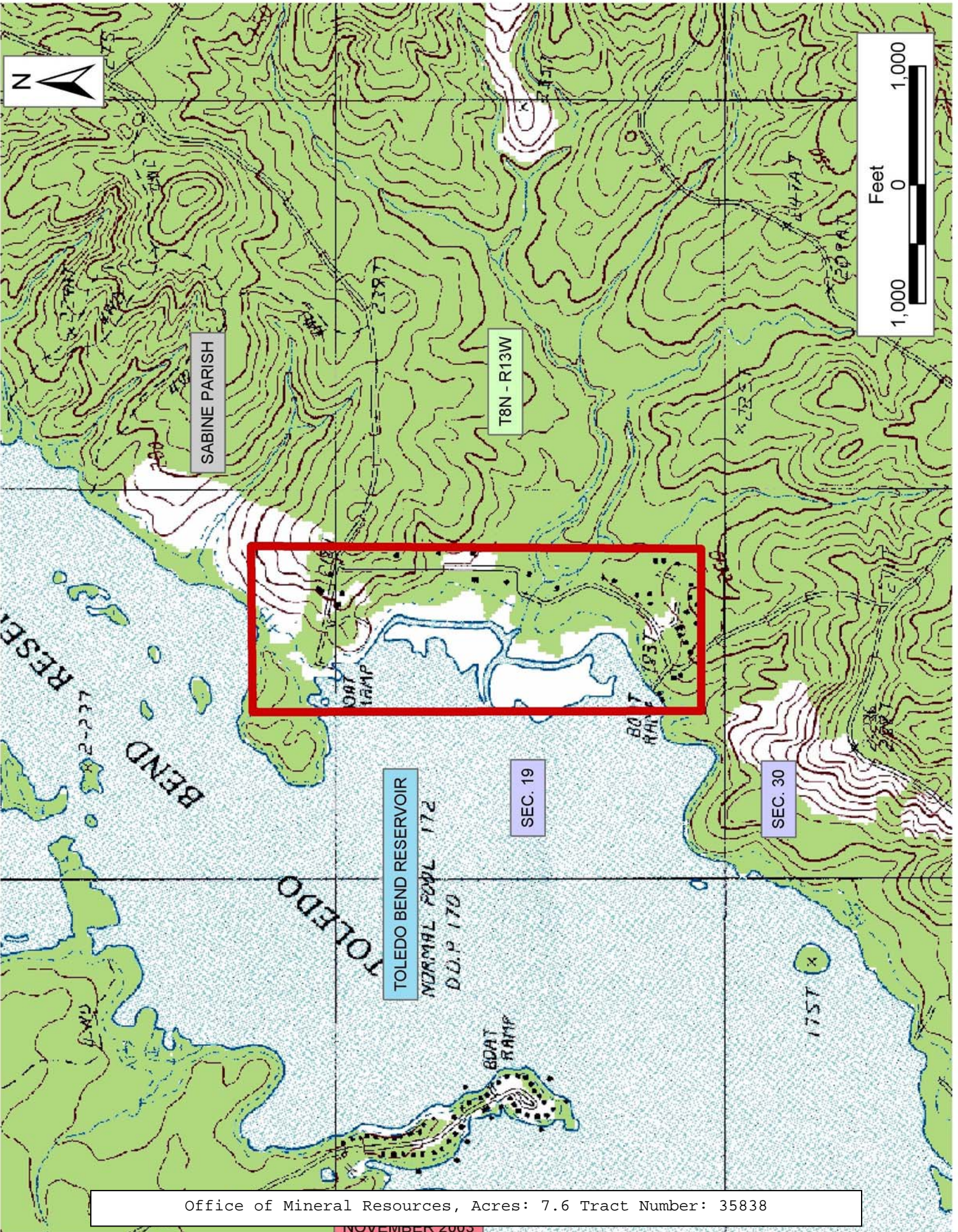
TRACT 35838 - Sabine Parish, Louisiana

A certain Tract of land, excluding the beds and bottoms of all navigable waters, belonging to and not presently under mineral lease from Sabine Parish Police Jury on November 12, 2003, being more fully described as follows: TRACT 1: All of the dedicated streets, alleys, walks, parks and other open spaces as shown on Plat for the Evergreen acres Subdivision, located in the East 1/2 of South East 1/4 of Section 19, Township 8 North, Range 13 West, Sabine Parish, Louisiana, containing **4.1 acres**, more or less; said Plat being recorded in Plat Cabinet 1, Plat Jacket 16 of the Records of the Clerk of the Court, Sabine Parish, Louisiana. TRACT 2: All of the dedicated streets, alleys, walks, parks and other open spaces as shown on Plat for the La Plaza Subdivision, located in the North East 1/4 of the North East 1/4 of Section 30, Township 8 North, Range 13 West, Sabine Parish, Louisiana, containing **3.5 acres**, more or less, containing an aggregate **7.6 acres**, all as more particularly outlined on a plat on file in the Office of Mineral Resources, Department of Natural Resources. The description is based on information provided by the State Agency regarding location and ownership of surface and mineral rights. All distances, bearing and coordinates, if applicable, are based on the Louisiana Coordinate System of 1927, (North or South Zone).

NOTE: The above description of the Tract nominated for lease has been provided and corrected, where required, exclusively by the nomination party. Any mineral lease selected from this Tract and awarded by the Louisiana State Mineral Board shall be without warranty of any kind, either express, implied, or statutory, including, but not limited to, the implied warranties of merchantability and fitness for a particular purpose. Should the mineral lease awarded by the Louisiana State Mineral Board be subsequently modified, cancelled or abrogated due to the existence of conflicting leases, operating agreements, private claims or other future obligations or conditions which may affect all or any portion of the leased Tract, it shall not relieve the Lessee of the obligation to pay any bonus due thereon to the Louisiana State Mineral Board, nor shall the Louisiana State Mineral Board be obligated to refund any consideration paid by the Lessor prior to such modification, cancellation, or abrogation, including, but not limited to, bonuses, rentals and royalties.

Applicant: Suncoast Technical Services, Inc. to Agency and by Resolution from the Sabine Parish Police Jury authorizing the Mineral Board to act in its behalf

Bidder	Cash Payment	Price/Acre	Rental	Oil	Gas	Other



SABINE PARISH

T8N - R13W



TOLEDO BEND RESERVOIR

NORMAL POOL 172
D.O.P. 170

SEC. 19

SEC. 30

Office of Mineral Resources, Acres: 7.6 Tract Number: 35838

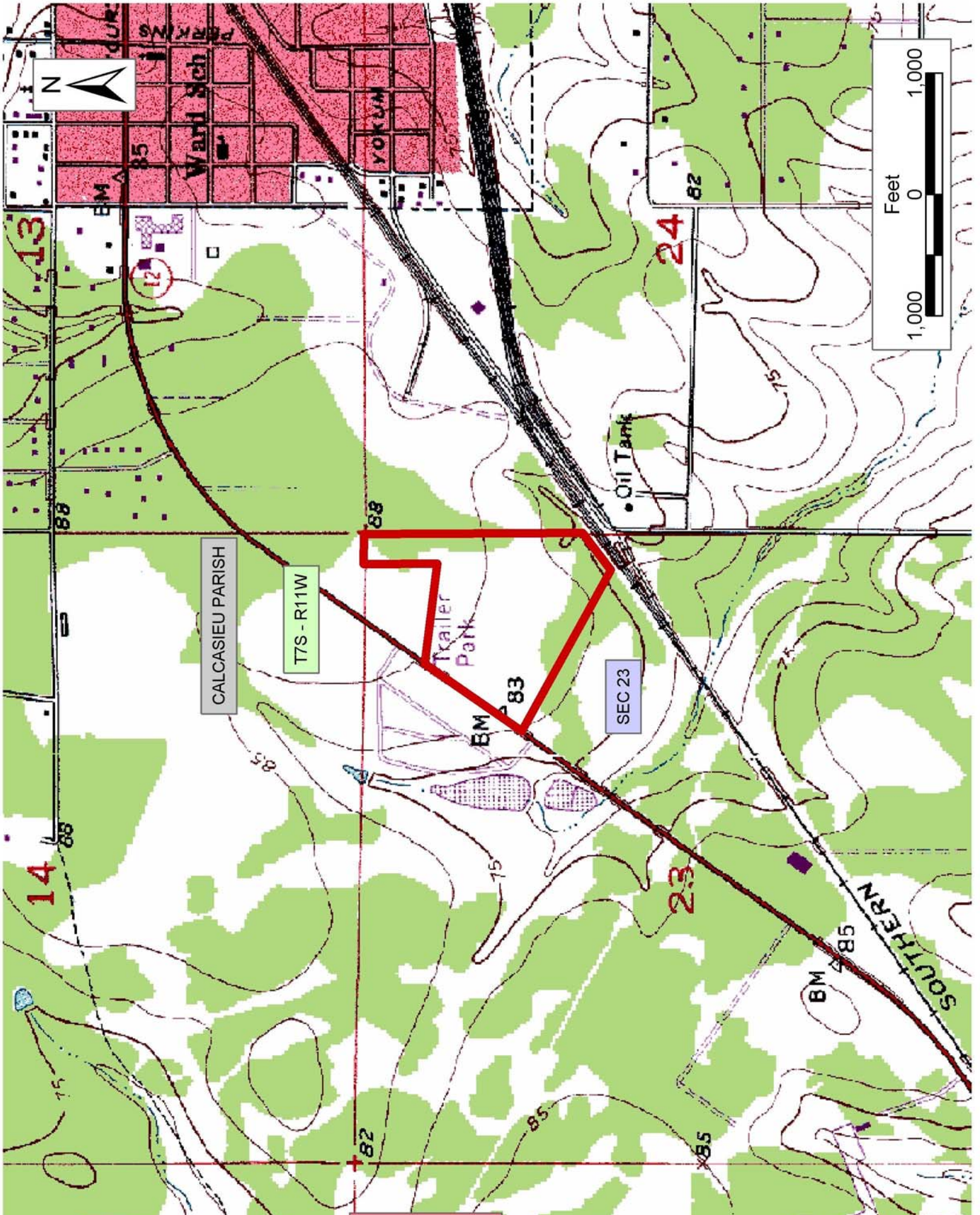
TRACT 35839 - Calcasieu Parish, Louisiana

A certain Tract of land, excluding the beds and bottoms of all navigable waters, belonging to and not presently under mineral lease from Calcasieu Parish School Board on November 12, 2003, being more fully described as follows: Beginning at the Northeast Corner of said Section 23, Township 7 South, Range 11 West; thence North 89 degrees 50 minutes 22 seconds West a distance of 312.10 feet, and corner; thence South 00 degrees 05 minutes East 605.73 feet and corner; thence North 82 degrees 27 minutes 37 seconds West a distance of 779.35 feet to the East right of way of Louisiana State Highway No. 12, thence South 34 degrees 47 minutes 54 seconds West along the right of way of Louisiana State Highway 12 a distance of 413.00 feet and corner; thence South 56 degrees 35 minutes 22 seconds East a distance of 830.16 feet along North right of way of proposed road location; thence North 89 degrees 51 minutes 42 seconds East a distance of 627.81 feet to the East line of said Section 23 and corner; thence North along the said East line of Section 23, Township 7 South, Range 11 West, a distance of 1,299.80 feet to point of beginning, containing approximately **22.28 acres**, all as more particularly outlined on a plat on file in the Office of Mineral Resources, Department of Natural Resources. The description is based on information provided by the State Agency regarding location and ownership of surface and mineral rights. All distances, bearing and coordinates, if applicable, are based on the Louisiana Coordinate System of 1927, (North or South Zone).

NOTE: The above description of the Tract nominated for lease has been provided and corrected, where required, exclusively by the nomination party. Any mineral lease selected from this Tract and awarded by the Louisiana State Mineral Board shall be without warranty of any kind, either express, implied, or statutory, including, but not limited to, the implied warranties of merchantability and fitness for a particular purpose. Should the mineral lease awarded by the Louisiana State Mineral Board be subsequently modified, cancelled or abrogated due to the existence of conflicting leases, operating agreements, private claims or other future obligations or conditions which may affect all or any portion of the leased Tract, it shall not relieve the Lessee of the obligation to pay any bonus due thereon to the Louisiana State Mineral Board, nor shall the Louisiana State Mineral Board be obligated to refund any consideration paid by the Lessor prior to such modification, cancellation, or abrogation, including, but not limited to, bonuses, rentals and royalties.

Applicant: Suncoast Land Services, Inc. to Agency and by Resolution from the Calcasieu Parish School Board authorizing the Mineral Board to act in its behalf

Bidder	Cash Payment	Price/Acre	Rental	Oil	Gas	Other



Office of Mineral Resources, Acres: 22.28 Tract Number: 35839

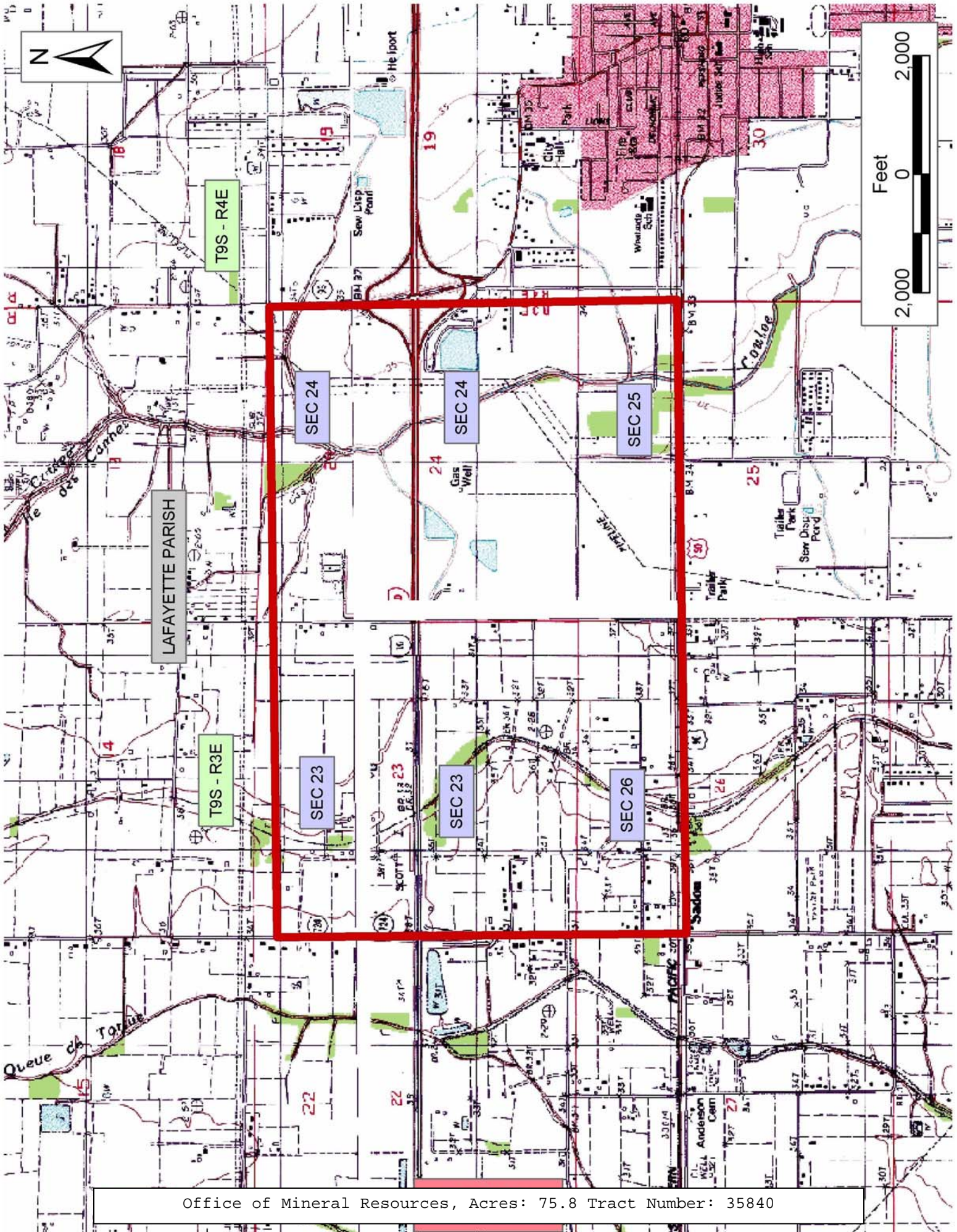
TRACT 35840 - Lafayette Parish, Louisiana

A certain Tract of land, excluding the beds and bottoms of all navigable waters, belonging to and not presently under mineral lease from Lafayette City-Parish Consolidated Government on November 12, 2003, being more fully described as follows: All roads, streets and highways lying in all of Sections 23 and 24, and North of United States Highway Ninety (90) in Sections 25 and 26, Township 9 South, Range 3 East, Lafayette Parish, Louisiana, containing approximately **75.80 acres**, all as more particularly outlined on a plat on file in the Office of Mineral Resources, Department of Natural Resources. The description is based on information provided by the State Agency regarding location and ownership of surface and mineral rights. All distances, bearing and coordinates, if applicable, are based on the Louisiana Coordinate System of 1927, (North or South Zone).

NOTE: The above description of the Tract nominated for lease has been provided and corrected, where required, exclusively by the nomination party. Any mineral lease selected from this Tract and awarded by the Louisiana State Mineral Board shall be without warranty of any kind, either express, implied, or statutory, including, but not limited to, the implied warranties of merchantability and fitness for a particular purpose. Should the mineral lease awarded by the Louisiana State Mineral Board be subsequently modified, cancelled or abrogated due to the existence of conflicting leases, operating agreements, private claims or other future obligations or conditions which may affect all or any portion of the leased Tract, it shall not relieve the Lessee of the obligation to pay any bonus due thereon to the Louisiana State Mineral Board, nor shall the Louisiana State Mineral Board be obligated to refund any consideration paid by the Lessor prior to such modification, cancellation, or abrogation, including, but not limited to, bonuses, rentals and royalties.

Applicant: Alpha Land Services, Inc. to Agency and by Resolution from the Lafayette City-Parish Consolidated Government authorizing the Mineral Board to act in its behalf

Bidder	Cash Payment	Price/Acre	Rental	Oil	Gas	Other



Office of Mineral Resources, Acres: 75.8 Tract Number: 35840

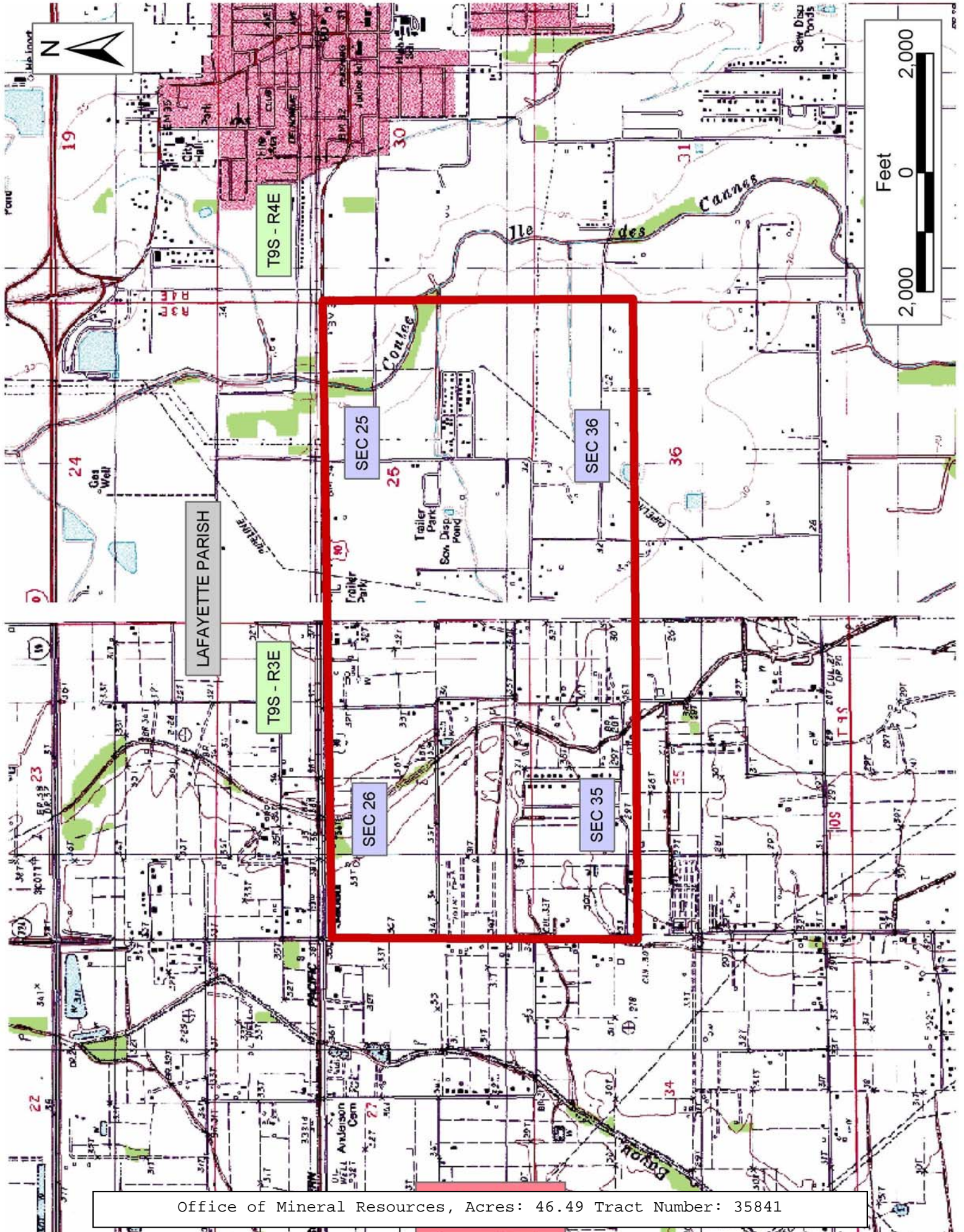
TRACT 35841 - Lafayette Parish, Louisiana

A certain Tract of land, excluding the beds and bottoms of all navigable waters, belonging to and not presently under mineral lease from Lafayette City-Parish Consolidated Government on November 12, 2003, being more fully described as follows: All roads, streets and highways lying in Sections 25 and 26, lying South of United States Highway Ninety (90), and in the North Half of the North Half of Sections 35 and 36, Township 9 South, Range 3 East, Lafayette Parish, Louisiana, containing approximately **46.49 acres**, all as more particularly outlined on a plat on file in the Office of Mineral Resources, Department of Natural Resources. The description is based on information provided by the State Agency regarding location and ownership of surface and mineral rights. All distances, bearing and coordinates, if applicable, are based on the Louisiana Coordinate System of 1927, (North or South Zone).

NOTE: The above description of the Tract nominated for lease has been provided and corrected, where required, exclusively by the nomination party. Any mineral lease selected from this Tract and awarded by the Louisiana State Mineral Board shall be without warranty of any kind, either express, implied, or statutory, including, but not limited to, the implied warranties of merchantability and fitness for a particular purpose. Should the mineral lease awarded by the Louisiana State Mineral Board be subsequently modified, cancelled or abrogated due to the existence of conflicting leases, operating agreements, private claims or other future obligations or conditions which may affect all or any portion of the leased Tract, it shall not relieve the Lessee of the obligation to pay any bonus due thereon to the Louisiana State Mineral Board, nor shall the Louisiana State Mineral Board be obligated to refund any consideration paid by the Lessor prior to such modification, cancellation, or abrogation, including, but not limited to, bonuses, rentals and royalties.

Applicant: Alpha Land Services, Inc. to Agency and by Resolution from the Lafayette City-Parish Consolidated Government authorizing the Mineral Board to act in its behalf

Bidder	Cash Payment	Price/Acre	Rental	Oil	Gas	Other



Office of Mineral Resources, Acres: 46.49 Tract Number: 35841

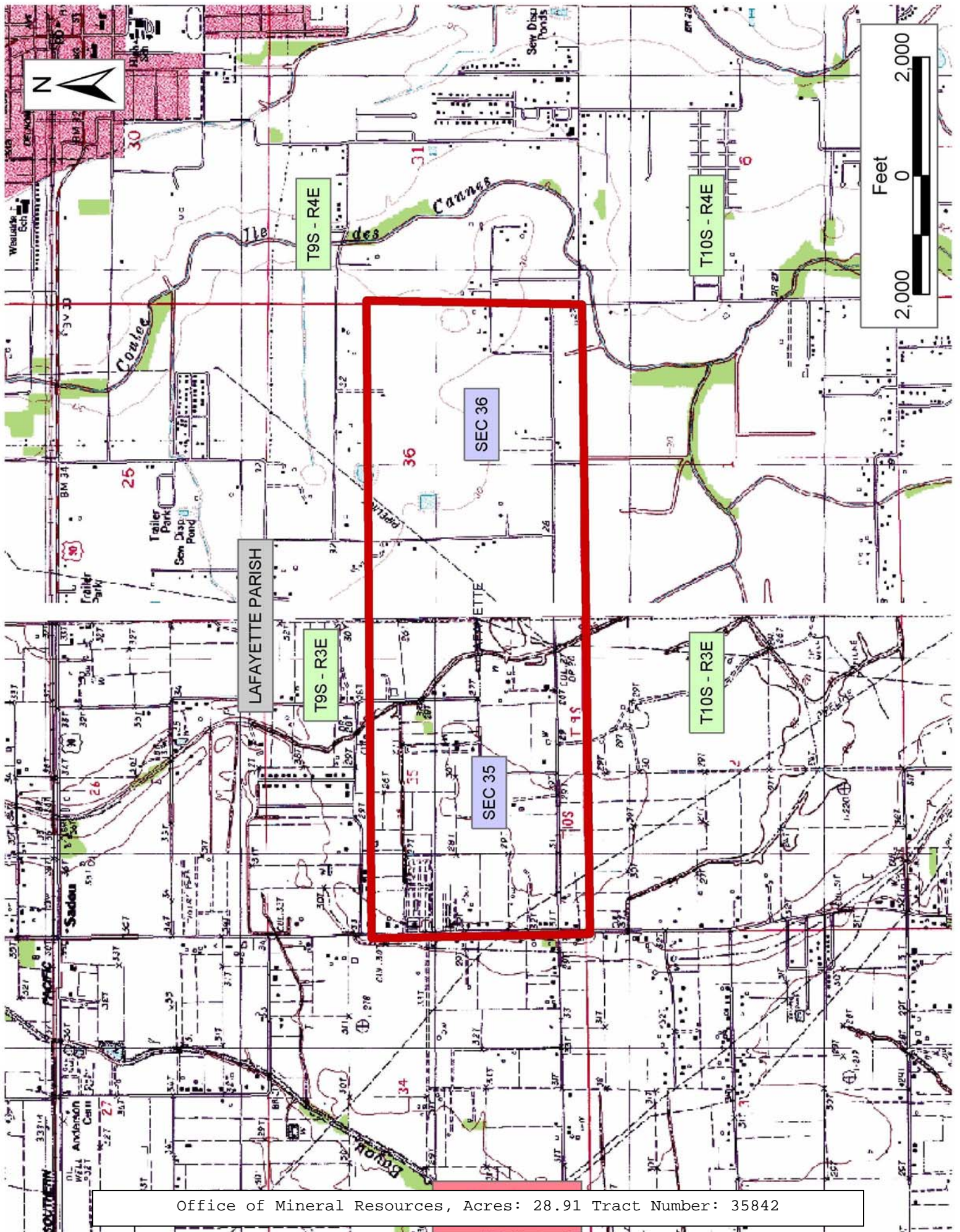
TRACT 35842 - Lafayette Parish, Louisiana

A certain Tract of land, excluding the beds and bottoms of all navigable waters, belonging to and not presently under mineral lease from Lafayette City-Parish Consolidated Government on November 12, 2003, being more fully described as follows: TRACT LAFAYETTE CONSOLIDATED GOVERNMENT LAFAYETTE PARISH, LOUISIANA All roads, streets and highways lying in the South Half of the North Half of Sections 35 and 36, and in the South Half of Sections 35 and 36, Township 9 South, Range 3 East, Lafayette Parish, Louisiana, containing approximately **28.91 acres**, all as more particularly outlined on a plat on file in the Office of Mineral Resources, Department of Natural Resources. The description is based on information provided by the State Agency regarding location and ownership of surface and mineral rights. All distances, bearing and coordinates, if applicable, are based on the Louisiana Coordinate System of 1927, (North or South Zone).

NOTE: The above description of the Tract nominated for lease has been provided and corrected, where required, exclusively by the nomination party. Any mineral lease selected from this Tract and awarded by the Louisiana State Mineral Board shall be without warranty of any kind, either express, implied, or statutory, including, but not limited to, the implied warranties of merchantability and fitness for a particular purpose. Should the mineral lease awarded by the Louisiana State Mineral Board be subsequently modified, cancelled or abrogated due to the existence of conflicting leases, operating agreements, private claims or other future obligations or conditions which may affect all or any portion of the leased Tract, it shall not relieve the Lessee of the obligation to pay any bonus due thereon to the Louisiana State Mineral Board, nor shall the Louisiana State Mineral Board be obligated to refund any consideration paid by the Lessor prior to such modification, cancellation, or abrogation, including, but not limited to, bonuses, rentals and royalties.

Applicant: Alpha Land Services, Inc. to Agency and by Resolution from the Lafayette City-Parish Consolidated Government authorizing the Mineral Board to act in its behalf

Bidder	Cash Payment	Price/Acre	Rental	Oil	Gas	Other



Office of Mineral Resources, Acres: 28.91 Tract Number: 35842

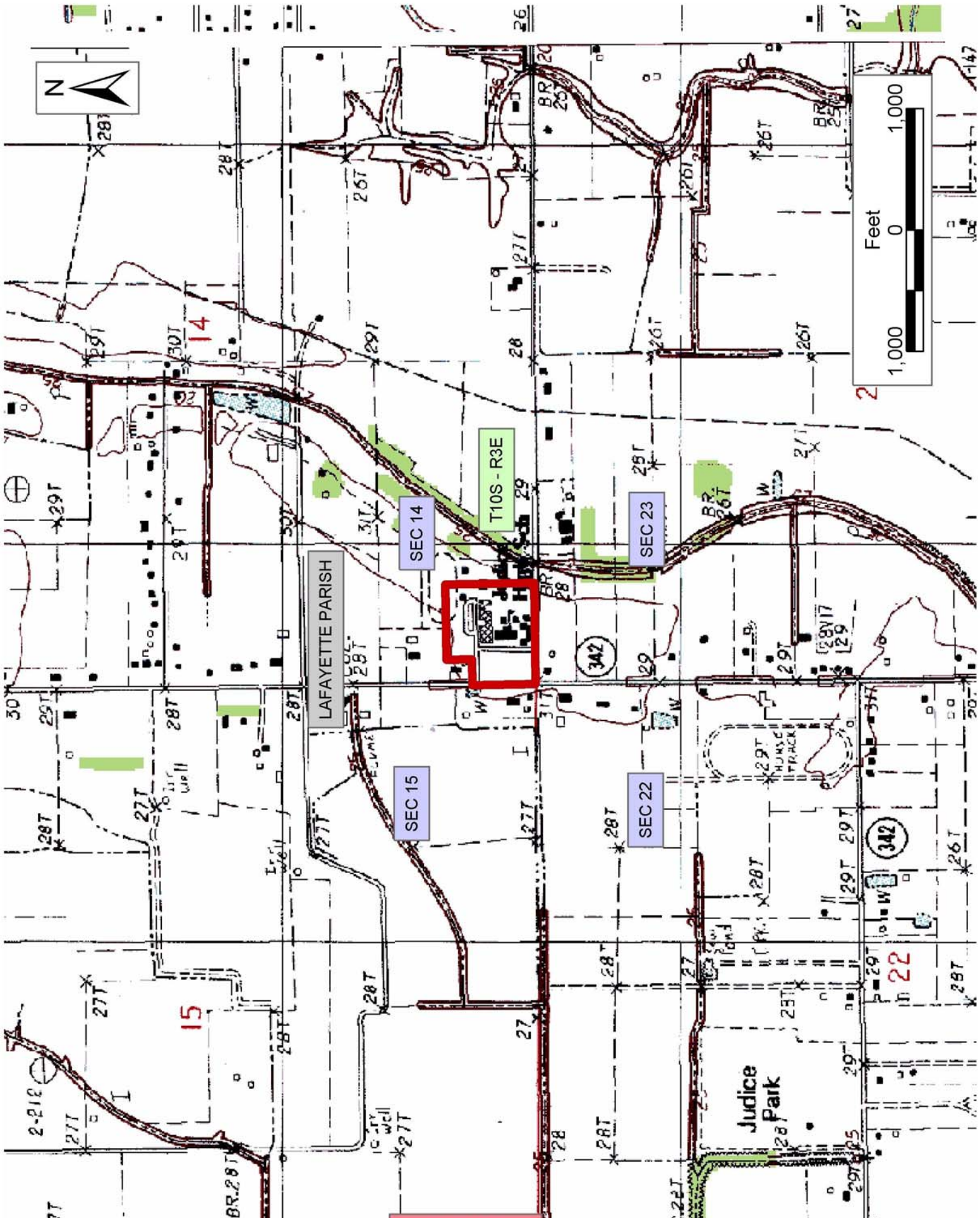
TRACT 35843 - Lafayette Parish, Louisiana

A certain Tract of land, excluding the beds and bottoms of all navigable waters, belonging to and not presently under mineral lease from Lafayette Parish School Board on November 12, 2003, being more fully described as follows: Beginning at the Southwest corner of the Southwest Quarter (SW/C of SW/4) of said Section 14, Township 10 South, Range 3 East, thence North 00 degrees 08 minutes 29 seconds West 519.81 feet, thence East 212.87 feet, thence North 212.97 feet, thence North 89 degrees 57 minutes 30 seconds East 620.55 feet, thence South 00 degrees 06 minutes 07 seconds East 734.23 feet, thence North 89 degrees 55 minutes 55 seconds West 833.45 feet to the point of beginning, being the same property acquired by the Lafayette Parish School Board by Act of Sale dated August 18, 1928, and by Act of Sale dated December 10, 1956, and recorded in the Conveyance Records of Lafayette Parish under Entry Numbers 86819 and 346461, containing approximately **13 acres**, all as more particularly outlined on a plat on file in the Office of Mineral Resources, Department of Natural Resources. The description is based on information provided by the State Agency regarding location and ownership of surface and mineral rights. All distances, bearing and coordinates, if applicable, are based on the Louisiana Coordinate System of 1927, (North or South Zone).

NOTE: The above description of the Tract nominated for lease has been provided and corrected, where required, exclusively by the nomination party. Any mineral lease selected from this Tract and awarded by the Louisiana State Mineral Board shall be without warranty of any kind, either express, implied, or statutory, including, but not limited to, the implied warranties of merchantability and fitness for a particular purpose. Should the mineral lease awarded by the Louisiana State Mineral Board be subsequently modified, cancelled or abrogated due to the existence of conflicting leases, operating agreements, private claims or other future obligations or conditions which may affect all or any portion of the leased Tract, it shall not relieve the Lessee of the obligation to pay any bonus due thereon to the Louisiana State Mineral Board, nor shall the Louisiana State Mineral Board be obligated to refund any consideration paid by the Lessor prior to such modification, cancellation, or abrogation, including, but not limited to, bonuses, rentals and royalties.

Applicant: F. J. Francis to Agency and by Resolution from the Lafayette Parish School Board authorizing the Mineral Board to act in its behalf

Bidder	Cash Payment	Price/ Acre	Rental	Oil	Gas	Other



Office of Mineral Resources, Acres: 13 Tract Number: 35843

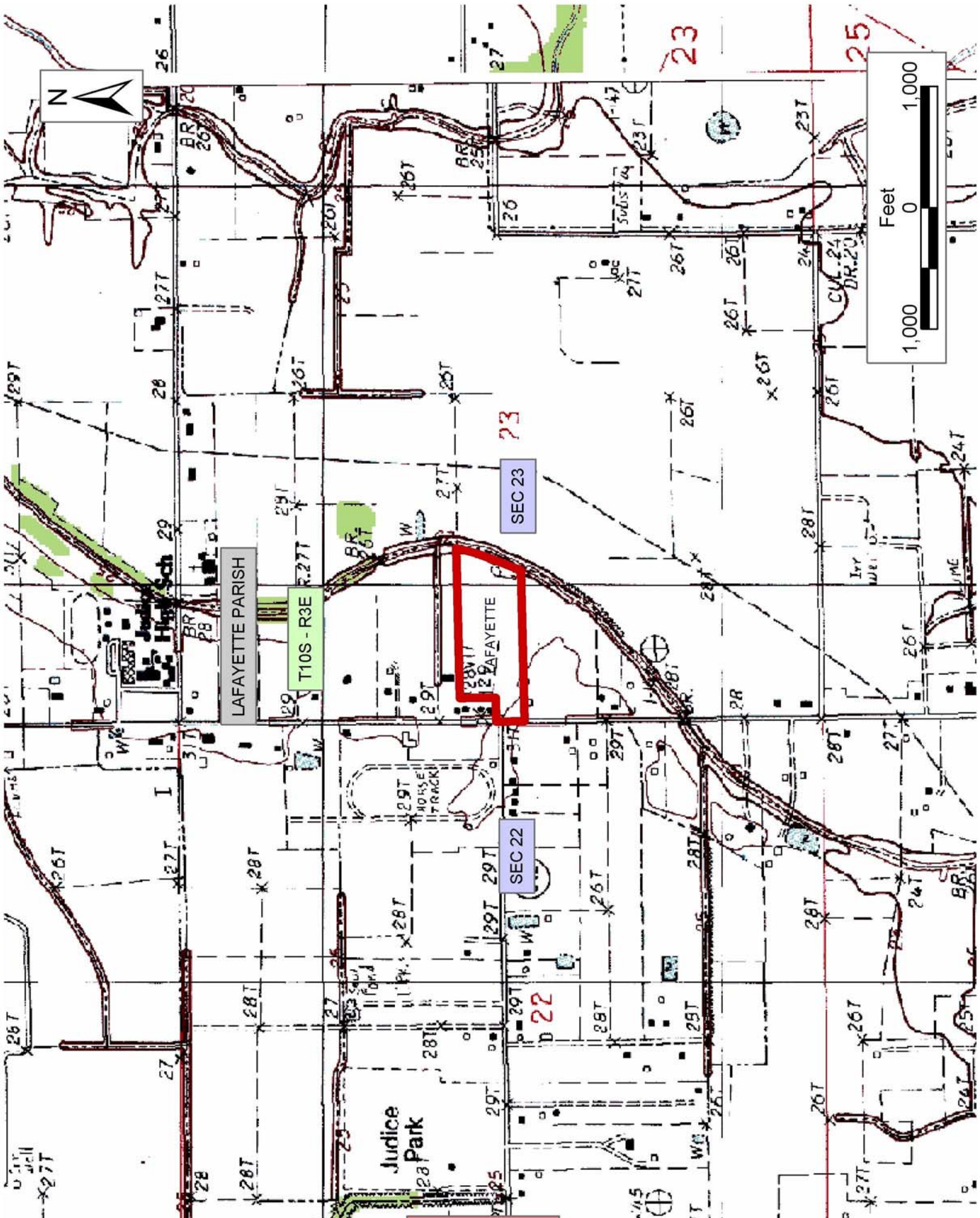
TRACT 35844 - Lafayette Parish, Louisiana

A certain Tract of land, excluding the beds and bottoms of all navigable waters, belonging to and not presently under mineral lease from Lafayette Parish School Board on November 12, 2003, being more fully described as follows: Commencing at the Northwest Corner of the Northwest Quarter (NW/C of NW/4) of Section 23, Township 10 South, Range 3 East, thence South 00 degrees 24 minutes 45 seconds West 2600.18 feet, to the point of beginning, thence North 89 degrees 45 minutes 21 seconds East 200.20 feet, thence North 00 degrees 09 minutes 51 seconds East 298 feet, thence North 89 degrees 31 minutes 00 seconds East 1,237.22 feet, thence South 13 degrees 22 minutes 54 seconds West 154.81 feet, thence South 20 degrees 00 minutes 22 seconds West 112.95 feet, thence South 24 degrees 35 minutes 58 seconds West 126.29 feet, thence South 22 degrees 25 minutes 55 seconds West 171.67 feet, thence South 89 degrees 31 minutes 00 seconds West 1,243.68 feet, thence North 00 degrees 05 minutes 42 seconds East 231.52 feet to the point of beginning; being the same property acquired by the Lafayette Parish School Board by Act of Sale and Donation dated November 13, 1980, and recorded in the Conveyance Records of Lafayette Parish under Entry Number 80 25810, and also identified between the letters A,B,C,D,E,F,G,H,I,J,A on plat of survey filed under Entry No. 80 025808, in the Conveyance Records of Lafayette Parish, Louisiana, containing approximately **15 acres**, all as more particularly outlined on a plat on file in the Office of Mineral Resources, Department of Natural Resources. The description is based on information provided by the State Agency regarding location and ownership of surface and mineral rights. All distances, bearing and coordinates, if applicable, are based on the Louisiana Coordinate System of 1927, (North or South Zone).

NOTE: The above description of the Tract nominated for lease has been provided and corrected, where required, exclusively by the nomination party. Any mineral lease selected from this Tract and awarded by the Louisiana State Mineral Board shall be without warranty of any kind, either express, implied, or statutory, including, but not limited to, the implied warranties of merchantability and fitness for a particular purpose. Should the mineral lease awarded by the Louisiana State Mineral Board be subsequently modified, cancelled or abrogated due to the existence of conflicting leases, operating agreements, private claims or other future obligations or conditions which may affect all or any portion of the leased Tract, it shall not relieve the Lessee of the obligation to pay any bonus due thereon to the Louisiana State Mineral Board, nor shall the Louisiana State Mineral Board be obligated to refund any consideration paid by the Lessor prior to such modification, cancellation, or abrogation, including, but not limited to, bonuses, rentals and royalties.

Applicant: F. J. Francis to Agency and by Resolution from the Lafayette Parish School Board authorizing the Mineral Board to act in its behalf

Bidder	Cash Payment	Price/Acre	Rental	Oil	Gas	Other



Office of Mineral Resources, Acres: 15 Tract Number: 35844