

TRACT 35754 - Portion of Block 37, Breton Sound Area, Plaquemines Parish, Louisiana

The beds and bottoms of all water bodies belonging to the State of Louisiana located in that portion of Block 37, Breton Sound Area, together with any present lands formed by accretion to the shoreline, located in Plaquemines Parish, Louisiana, and not presently under mineral lease on November 12, 2003, the geographical area of which is more fully described as follows: Beginning at a point having Coordinates of X = 2,694,350.00 and Y = 307,580.00, said point also being the Southwest corner of Block 37, Breton Sound Area; thence North 2,912.12 feet on and along the West line of said Block 37, to a point having Coordinates of X = 2,694,350.00 and Y = 310,492.12; thence North 71 degrees 03 minutes 12 seconds East 15,594.91 feet to a point having Coordinates of X = 2,709,100.00 and Y = 315,555.59, said point being on the East line of said Block 37; thence South 7,975.59 feet on and along said East line of said Block 37, to a point having Coordinates of X = 2,709,100.00 and Y = 307,580.00, said point also being the Southeast corner of said Block 37; thence West 14,750.00 feet on and along the South line of said Block 37, to the point of beginning, containing approximately **1,843.36 acres**, all as more particularly outlined on a plat on file in the Office of Mineral Resources, Department of Natural Resources. All bearings, distances and coordinates are based on Louisiana Coordinate System of 1927, (North or South Zone).

NOTE: The above description of the Tract nominated for lease has been provided and corrected, where required, exclusively by the nomination party. Any mineral lease selected from this Tract and awarded by the Louisiana State Mineral Board shall be without warranty of any kind, either express, implied, or statutory, including, but not limited to, the implied warranties of merchantability and fitness for a particular purpose. Should the mineral lease awarded by the Louisiana State Mineral Board be subsequently modified, cancelled or abrogated due to the existence of conflicting leases, operating agreements, private claims or other future obligations or conditions which may affect all or any portion of the leased Tract, it shall not relieve the Lessee of the obligation to pay any bonus due thereon to the Louisiana State Mineral Board, nor shall the Louisiana State Mineral Board be obligated to refund any consideration paid by the Lessor prior to such modification, cancellation, or abrogation, including, but not limited to, bonuses, rentals and royalties.

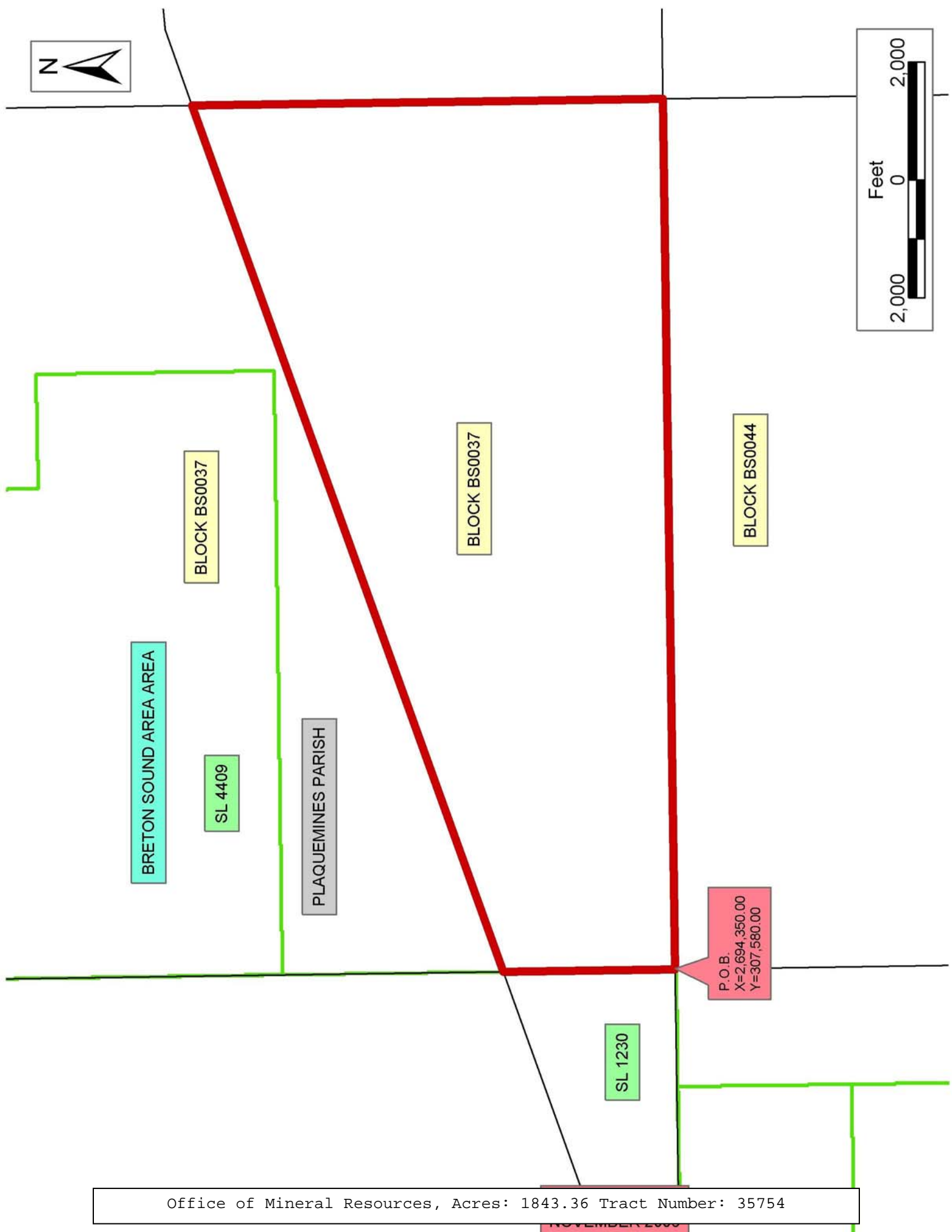
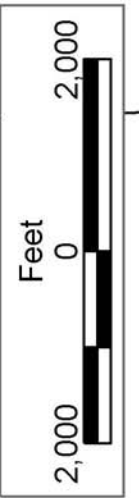
NOTE: The State of Louisiana does hereby reserve, and this lease shall be subject to, the imprescriptible right of surface use in the nature of a servitude in favor of the Department of Natural Resources, including its Offices and Commissions, for the sole purpose of implementing, constructing, servicing and maintaining approved coastal zone management and/or restoration projects. Utilization of any and all rights derived under this lease by the mineral lessee, its agents, successors or assigns, shall not interfere with nor hinder the reasonable surface use by the

Department of Natural Resources, its Offices or Commissions, as herein above reserved.

NOTE: It appears, according to our records, that a portion of this Tract is located within the restrictive safety fairway area as set out by the Corps of Engineers, U.S. Army and/or the restrictive anchorage area as set out by the U.S. Coast Guard.

Applicant: Robert A. Schroeder, Inc.

Bidder	Cash Payment	Price/Acre	Rental	Oil	Gas	Other



Office of Mineral Resources, Acres: 1843.36 Tract Number: 35754

TRACT 35755 - Portion of Block 45, Breton Sound Area, Plaquemines Parish, Louisiana

The beds and bottoms of all water bodies belonging to the State of Louisiana located in that portion of Block 45, Breton Sound Area, together with any present lands formed by accretion to the shoreline, located in Plaquemines Parish, Louisiana, and not presently under mineral lease on November 12, 2003, the geographical area of which is more fully described as follows: Beginning at a point having Coordinates of X = 2,694,350.00 and Y = 307,580.00, said point being the northeast corner of Block 45, Breton Sound Area; Thence South 7,900.00 feet on and along the east line of said Block 45, Breton Sound Area, to a point having Coordinates of X = 2,694,350.00 and Y = 299,680.00, said point being on a western boundary of State of Louisiana State Lease No. 16735; Thence on and along said western boundary of said State of Louisiana State Lease No. 16735, on and along the northern and western boundaries of State of Louisiana State Lease No. 15683, and on and along the northern boundary of State of Louisiana State Lease No. 17674 the following courses and distances, to wit: South 29 degrees 33 minutes 37 seconds West 3,851.30 feet to a point having Coordinates of X = 2,692,450.00 and Y = 296,330.00; West 850.00 feet to a point having Coordinates of X = 2,691,600.00 and Y = 296,330.00; South 50 degrees 31 minutes 39 seconds West 4,210.22 feet to a point having Coordinates of X = 2,688,350.00 and Y = 293,653.53; and South 82 degrees 36 minutes 38 seconds West 6,403.18 feet to a point having Coordinates of X = 2,682,000.00 and Y = 292,830.00, said point being on the south line of said Block 45, Breton Sound Area; Thence West 2,400.00 feet on and along said south line of said Block 45, Breton Sound Area, to a point having Coordinates of X = 2,679,600.00 and Y = 292,830.00, said point being the southwest corner of said Block 45, Breton Sound Area; Thence North 1,813.81 feet on and along the west line of said Block 45, Breton Sound Area, to a point having Coordinates of X = 2,679,600.00 and Y = 294,643.81; Thence North 77 degrees 54 minutes 34 seconds East 1,309.04 feet to a point having Coordinates of X = 2,680,880.00 and Y = 294,918.00; Thence North 64 degrees 13 minutes 43 seconds East 2,097.60 feet to a point having Coordinates of X = 2,682,768.97 and Y = 295,830.00, said point being on a southern boundary of State of Louisiana State Lease No. 17691; Thence North 64 degrees 13 minutes 43 seconds East 256.55 feet on and along said southern boundary of said State of Louisiana State Lease No. 17691 to a point having Coordinates of X = 2,683,000.00 and Y = 295,941.54; Thence North 64 degrees 13 minutes 43 seconds East 293.16 feet to a point having Coordinates of X = 2,683,264.00 and Y = 296,069.00; Thence North 50 degrees 01 minutes 31 seconds East 2,341.04 feet to a point having Coordinates of X = 2,685,058.00 and Y = 297,573.00; Thence North 38 degrees 15 minutes 07 seconds East 3,159.32 feet to a point having Coordinates of X = 2,687,014.00 and Y = 300,054.00; Thence North 20 degrees 30 minutes 03 seconds East 1,701.78 feet to a point having Coordinates of X = 2,687,610.00 and Y = 301,648.00; Thence North 15 degrees 04 minutes 09 seconds East 59.03 feet to a point having Coordinates of X = 2,687,625.35 and Y = 301,705.00, said point being on a southern boundary of State of Louisiana State Lease No. 2001, as amended;

Thence on and along the southern and eastern boundaries of said State of Louisiana State Lease No. 2001, as amended, and on and along the eastern boundary of State of Louisiana State Lease No. 1237, as amended, the following courses and distances, to wit: East 4,724.65 feet to a point having Coordinates of X = 2,692,350.00 and Y = 301,705.00; North 2,925.00 feet to a point having Coordinates of X = 2,692,350.00 and Y = 304,630.00; and North 2,950 feet to a point having Coordinates of X = 2,692,350.00 and Y = 307,580.00, said point being on the north line of said Block 45, Breton Sound Area; Thence East 2,000.00 feet on and along said north line of said Block 45, Breton Sound Area, to the point of beginning, containing approximately **1,873.51 acres**, all as more particularly outlined on a plat on file in the Office of Mineral Resources, Department of Natural Resources. All bearings, distances and coordinates are based on Louisiana Coordinate System of 1927, (North or South Zone).

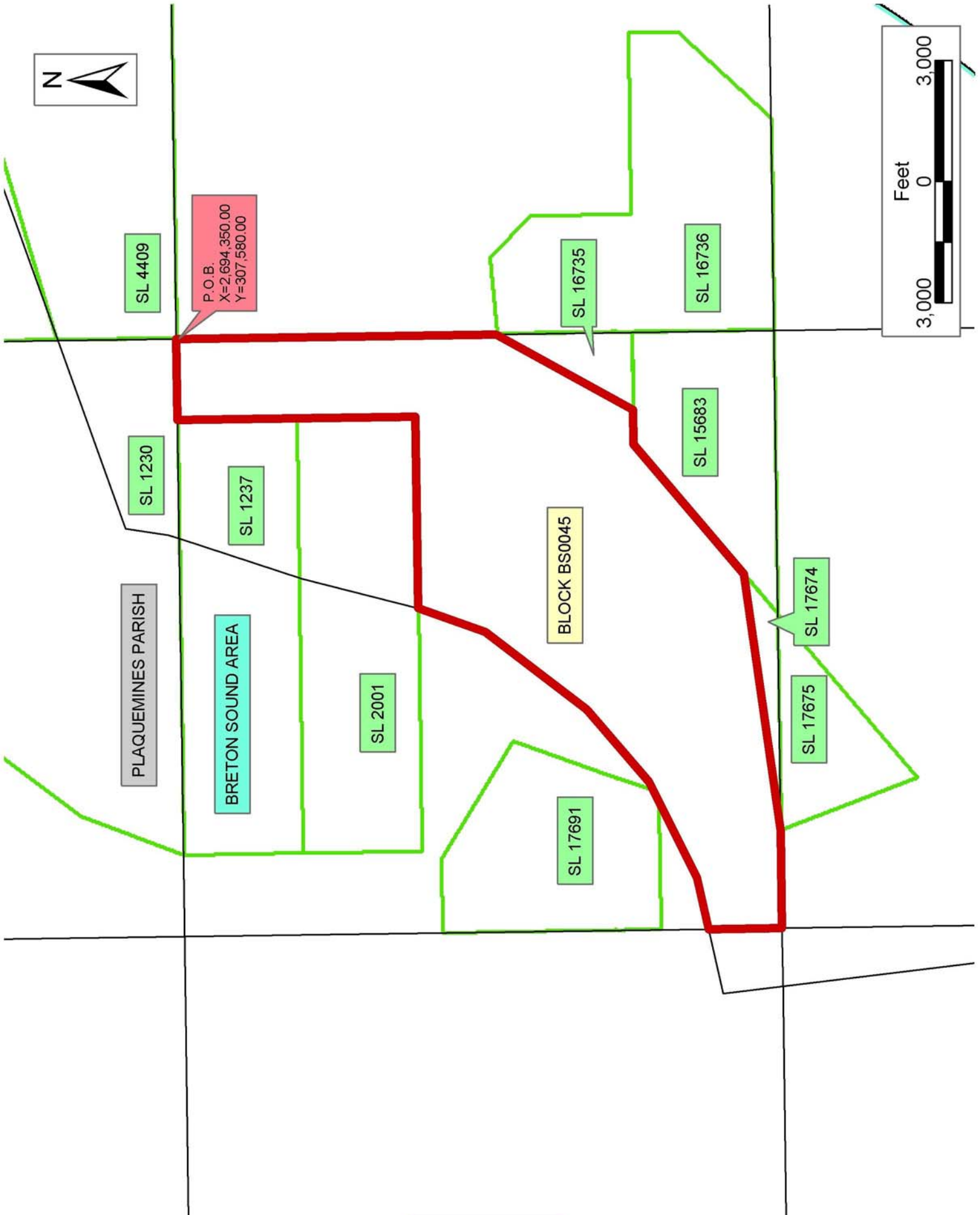
NOTE: The above description of the Tract nominated for lease has been provided and corrected, where required, exclusively by the nomination party. Any mineral lease selected from this Tract and awarded by the Louisiana State Mineral Board shall be without warranty of any kind, either express, implied, or statutory, including, but not limited to, the implied warranties of merchantability and fitness for a particular purpose. Should the mineral lease awarded by the Louisiana State Mineral Board be subsequently modified, cancelled or abrogated due to the existence of conflicting leases, operating agreements, private claims or other future obligations or conditions which may affect all or any portion of the leased Tract, it shall not relieve the Lessee of the obligation to pay any bonus due thereon to the Louisiana State Mineral Board, nor shall the Louisiana State Mineral Board be obligated to refund any consideration paid by the Lessor prior to such modification, cancellation, or abrogation, including, but not limited to, bonuses, rentals and royalties.

NOTE: The State of Louisiana does hereby reserve, and this lease shall be subject to, the imprescriptible right of surface use in the nature of a servitude in favor of the Department of Natural Resources, including its Offices and Commissions, for the sole purpose of implementing, constructing, servicing and maintaining approved coastal zone management and/or restoration projects. Utilization of any and all rights derived under this lease by the mineral lessee, its agents, successors or assigns, shall not interfere with nor hinder the reasonable surface use by the Department of Natural Resources, its Offices or Commissions, as herein above reserved.

NOTE: It appears, according to our records, that a portion of this Tract is located within the restrictive safety fairway area as set out by the Corps of Engineers, U.S. Army and/or the restrictive anchorage area as set out by the U.S. Coast Guard.

Applicant: Robert A. Schroeder, Inc.

Bidder	Cash Payment	Price/Acre	Rental	Oil	Gas	Other



PLAQUEMINES PARISH

BRETON SOUND AREA

BLOCK BS0045

SL 4409

SL 1230

SL 1237

SL 2001

SL 17691

SL 17675

SL 17674

SL 15683

SL 16735

SL 16736

P.O.B.
X=2,694,350.00
Y=307,580.00



TRACT 35756 - Portion of Block 44, Breton Sound Area, Plaquemines Parish, Louisiana

The beds and bottoms of all water bodies belonging to the State of Louisiana located in that portion of Block 44, Breton Sound Area, together with any present lands formed by accretion to the shoreline, located in Plaquemines Parish, Louisiana, and not presently under mineral lease on November 12, 2003, the geographical area of which is more fully described as follows: Beginning at a point having Coordinates of X = 2,694,350.00 and Y = 307,580.00, said point being the Northwest corner of Block 44, Breton Sound Area; thence East 7,375.00 feet on and along the North line of said Block 44, to a point having Coordinates of X = 2,701,725.00 and Y = 307,580.00; thence South 11,250.00 feet to a point having Coordinates of X = 2,701,725.00 and Y = 296,330.00, said point being on the Northern boundary of State Lease No. 16736; thence on and along the Northern and Eastern boundaries of said State Lease No. 16736, the following courses and distances, to wit: West 4,475.00 feet to a point having Coordinates of X = 2,697,250.00 and Y = 296,330.00; North 2,500.00 feet to a point having Coordinates of X = 2,697,250.00 and Y = 298,830.00; North 46 degrees 23 minutes 50 seconds West 1,450.00 feet to a point having Coordinates of X = 2,696,200.00 and Y = 299,830.00; and South 85 degrees 21 minutes 52 seconds West 1,856.07 feet to a point having Coordinates of X = 2,694,350.00 and Y = 299,680.00, said point being on the West line of said Block 44; thence North 7,900.00 feet on and along said West line of said Block 44, to the point of beginning, containing approximately **1,686.93 acres**, all as more particularly outlined on a plat on file in the Office of Mineral Resources, Department of Natural Resources. All bearings, distances and coordinates are based on Louisiana Coordinate System of 1927, (North or South Zone).

NOTE: The above description of the Tract nominated for lease has been provided and corrected, where required, exclusively by the nomination party. Any mineral lease selected from this Tract and awarded by the Louisiana State Mineral Board shall be without warranty of any kind, either express, implied, or statutory, including, but not limited to, the implied warranties of merchantability and fitness for a particular purpose. Should the mineral lease awarded by the Louisiana State Mineral Board be subsequently modified, cancelled or abrogated due to the existence of conflicting leases, operating agreements, private claims or other future obligations or conditions which may affect all or any portion of the leased Tract, it shall not relieve the Lessee of the obligation to pay any bonus due thereon to the Louisiana State Mineral Board, nor shall the Louisiana State Mineral Board be obligated to refund any consideration paid by the Lessor prior to such modification, cancellation, or abrogation, including, but not limited to, bonuses, rentals and royalties.

NOTE: The State of Louisiana does hereby reserve, and this lease shall be subject to, the imprescriptible right of surface use in the nature of a servitude in favor of the Department of Natural Resources, including its Offices and Commissions, for the sole purpose of implementing,

constructing, servicing and maintaining approved coastal zone management and/or restoration projects. Utilization of any and all rights derived under this lease by the mineral lessee, its agents, successors or assigns, shall not interfere with nor hinder the reasonable surface use by the Department of Natural Resources, its Offices or Commissions, as herein above reserved.

NOTE: It appears, according to our records, that a portion of this Tract is located within the restrictive safety fairway area as set out by the Corps of Engineers, U.S. Army and/or the restrictive anchorage area as set out by the U.S. Coast Guard.

Applicant: Robert A. Schroeder, Inc.

Bidder	Cash Payment	Price/Acre	Rental	Oil	Gas	Other



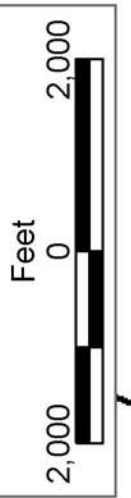
PLAQUEMINES PARISH

BRETON SOUND AREA

BLOCK BS0044

LA

US



SL 1230

P.O.B.
X=2,694,350.00
Y=307,580.00

SL 1237

SL 2001

SL 16735

SL 15683

SL 16736

Office of Mineral Resources, Acres: 1686.93 Tract Number: 35756

NOVEMBER 2003

TRACT 35757 - Portion of Block 44, Breton Sound Area, Plaquemines Parish, Louisiana

The beds and bottoms of all water bodies belonging to the State of Louisiana located in that portion of Block 44, Breton Sound Area, together with any present lands formed by accretion to the shoreline, located in Plaquemines Parish, Louisiana, and not presently under mineral lease on November 12, 2003, the geographical area of which is more fully described as follows: Beginning at a point having Coordinates of X = 2,709,100.00 and Y = 307,580.00, said point being the Northeast corner of Block 44, Breton Sound Area; thence South 11,309.92 feet on and along the East line of said Block 44, to a point having Coordinates of X = 2,709,100.00 and Y = 296,270.08; thence South 71 degrees 03 minutes 08 seconds West 4,884.68 feet to a point having Coordinates of X = 2,704,480.00 and Y = 294,684.00; thence South 20 degrees 31 minutes 09 seconds West 1,086.96 feet to a point having Coordinates of X = 2,704,099.00 and Y = 293,666.00; thence Southwesterly 901.04 feet on a non tangent curve to the right having a radius of 18,240.60 feet to a point having Coordinates of X = 2,703,763.13 and Y = 292,830.00, said point being on the South line of said Block 44; thence West 4,200.09 feet on and along said South line of said Block 44, to a point having Coordinates of X = 2,699,563.04 and Y = 292,830.00, said point being on the Eastern boundary of State Lease No. 16736; thence on and along said Eastern boundary of said State Lease No. 16736, the following courses and distances, to wit: North 43 degrees 43 minutes 37 seconds East 3,127.73 feet to a point having Coordinates of X = 2,701,725.00 and Y = 295,090.23; and North 1,239.77 feet to a point having Coordinates of X = 2,701,725.00 and Y = 296,330.00; thence North 11,250.00 feet to a point having Coordinates of X = 2,701,725.00 and Y = 307,580.00, said point being on the North line of said Block 44; thence East 7,375.00 feet on and along said North line of said Block 44, to the point of beginning, containing approximately **2,257.71 acres, LESS AND EXCEPT** that portion thereof, if any, lying seaward of the line three nautical miles from the coast line of Louisiana, as said three mile line has been decreed by the Supreme Court of the United States, as determined by a Special Master appointed therein, in litigation styled **United States v. State of Louisiana et al No. 9 Original**, in 1975, all as more particularly outlined on a plat in the Office of Mineral Resources, Department of Natural Resources. All bearings, distances and coordinates are based on the Louisiana Coordinate System of 1927, (South Zone).

NOTE: The above description of the Tract nominated for lease has been provided and corrected, where required, exclusively by the nomination party. Any mineral lease selected from this Tract and awarded by the Louisiana State Mineral Board shall be without warranty of any kind, either express, implied, or statutory, including, but not limited to, the implied warranties of merchantability and fitness for a particular purpose. Should the mineral lease awarded by the Louisiana State Mineral Board be subsequently modified, cancelled or abrogated due to the existence of conflicting leases, operating agreements, private claims or other future obligations or conditions which may affect all or any portion

of the leased Tract, it shall not relieve the Lessee of the obligation to pay any bonus due thereon to the Louisiana State Mineral Board, nor shall the Louisiana State Mineral Board be obligated to refund any consideration paid by the Lessor prior to such modification, cancellation, or abrogation, including, but not limited to, bonuses, rentals and royalties.

NOTE: The State of Louisiana does hereby reserve, and this lease shall be subject to, the imprescriptible right of surface use in the nature of a servitude in favor of the Department of Natural Resources, including its Offices and Commissions, for the sole purpose of implementing, constructing, servicing and maintaining approved coastal zone management and/or restoration projects. Utilization of any and all rights derived under this lease by the mineral lessee, its agents, successors or assigns, shall not interfere with nor hinder the reasonable surface use by the Department of Natural Resources, its Offices or Commissions, as herein above reserved.

NOTE: It appears, according to our records, that a portion of this Tract is located within the restrictive safety fairway area as set out by the Corps of Engineers, U.S. Army and/or the restrictive anchorage area as set out by the U.S. Coast Guard.

Applicant: Robert A. Schroeder, Inc.

Bidder	Cash Payment	Price/Acre	Rental	Oil	Gas	Other

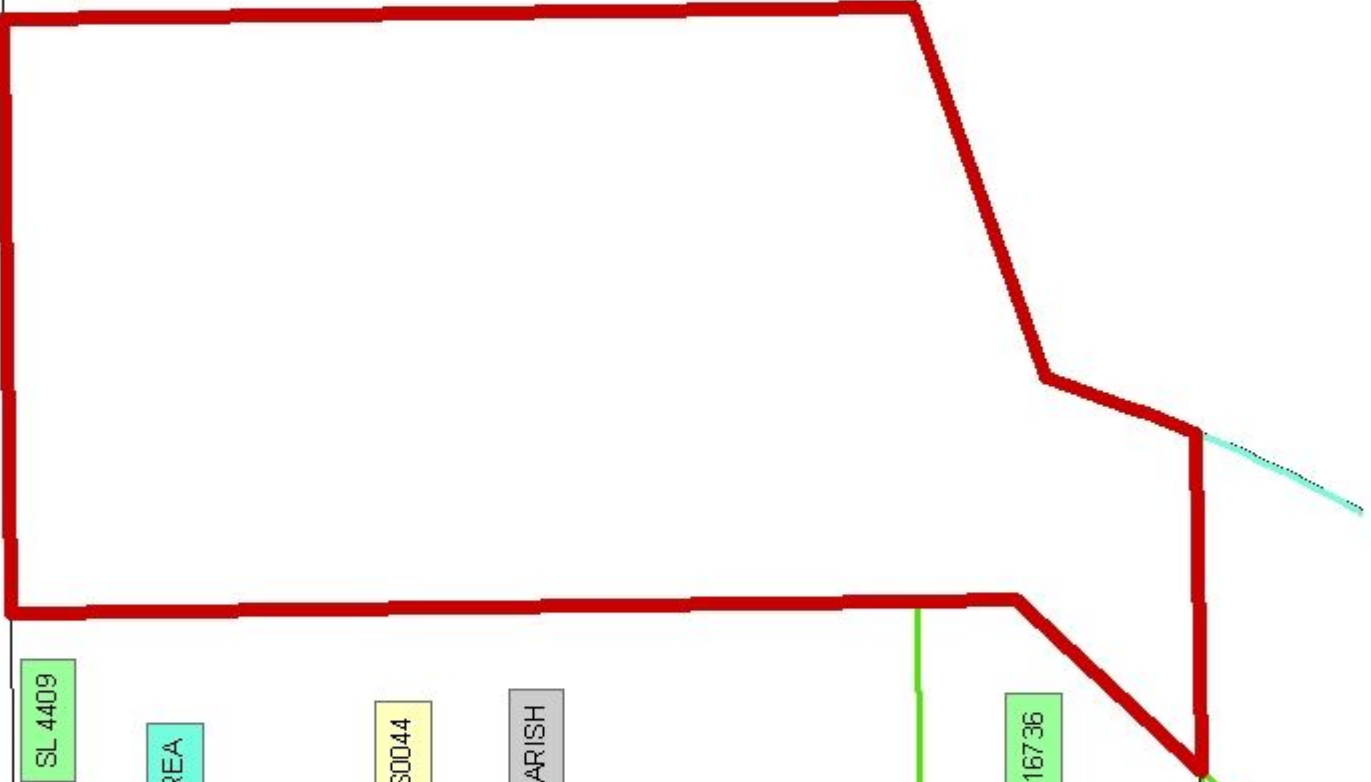
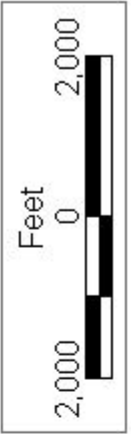


P.O.B.
X=2,709,100.00
Y=307,580.00

BLOCK BS0043

LA

US



SL 4409

BRETON SOUND AREA

BLOCK BS0044

PLAQUEMINES PARISH

SL 16736

SL 16738

TR 03110103
NOVEMBER 2003

TRACT 35758 - Portion of Block 53, Breton Sound Area, Plaquemines Parish, Louisiana

The beds and bottoms of all water bodies belonging to the State of Louisiana located in that portion of Block 53, Breton Sound Area, together with any present lands formed by accretion to the shoreline, located in Plaquemines Parish, Louisiana, and not presently under mineral lease on November 12, 2003, the geographical area of which is more fully described as follows: Beginning at a point having Coordinates of X = 2,699,563.04 and Y = 292,830.00, said point being on the North line of Block 53, Breton Sound Area, said point also being on the Eastern boundary of State Lease No. 16738; thence East 4,200.09 feet on and along said North line of said Block 53, to a point having Coordinates of X = 2,703,763.13 and Y = 292,830.00; thence Southwesterly 4,750.29 feet on a non tangent curve to the right having a radius of 18,240.60 feet to a point having Coordinates of X = 2,701,338.00 and Y = 288,761.00; thence South 38 degrees 15 minutes 07 seconds West 1,918.85 feet to a point having Coordinates of X = 2,700,150.00 and Y = 287,254.14, said point being on the Northern boundary of State Lease No. 3770, as amended; thence on and along the Northern and Eastern boundaries of said State Lease No. 3770, as amended, and on and along said Eastern boundary of said State Lease No. 16738 the following courses and distances, to wit: West 5,000.00 feet to a point having Coordinates of X = 2,695,150.00 and Y = 287,254.14; North 46 degrees 44 minutes 26 seconds East 5,217.93 feet to a point having Coordinates of X = 2,698,950.00 and Y = 290,830.00; West 1,300.00 feet to a point having Coordinates of X = 2,697,650.00 and Y = 290,830.00; and North 43 degrees 43 minutes 37 seconds East 2,767.62 feet to the point of beginning, containing approximately **581.34 acres, LESS AND EXCEPT** that portion thereof, if any, lying seaward of the line three nautical miles from the coast line of Louisiana, as said three mile line has been decreed by the Supreme Court of the United States, as determined by a Special Master appointed therein, in litigation styled **United States v. State of Louisiana et al No. 9 Original**, in 1975, all as more particularly outlined on a plat in the Office of Mineral Resources, Department of Natural Resources. All bearings, distances and coordinates are based on the Louisiana Coordinate System of 1927, (South Zone).

NOTE: The above description of the Tract nominated for lease has been provided and corrected, where required, exclusively by the nomination party. Any mineral lease selected from this Tract and awarded by the Louisiana State Mineral Board shall be without warranty of any kind, either express, implied, or statutory, including, but not limited to, the implied warranties of merchantability and fitness for a particular purpose. Should the mineral lease awarded by the Louisiana State Mineral Board be subsequently modified, cancelled or abrogated due to the existence of conflicting leases, operating agreements, private claims or other future obligations or conditions which may affect all or any portion of the leased Tract, it shall not relieve the Lessee of the obligation to pay any bonus due thereon to the Louisiana State Mineral Board, nor shall the Louisiana State Mineral Board be obligated to refund any consideration

paid by the Lessor prior to such modification, cancellation, or abrogation, including, but not limited to, bonuses, rentals and royalties.

NOTE: The State of Louisiana does hereby reserve, and this lease shall be subject to, the imprescriptible right of surface use in the nature of a servitude in favor of the Department of Natural Resources, including its Offices and Commissions, for the sole purpose of implementing, constructing, servicing and maintaining approved coastal zone management and/or restoration projects. Utilization of any and all rights derived under this lease by the mineral lessee, its agents, successors or assigns, shall not interfere with nor hinder the reasonable surface use by the Department of Natural Resources, its Offices or Commissions, as herein above reserved.

Applicant: Robert A. Schroeder, Inc.

Bidder	Cash Payment	Price/Acre	Rental	Oil	Gas	Other

