

TRACT 35831 - Portion of Block 34, Breton Sound Area, Plaquemines Parish, Louisiana

All of the lands now or formerly constituting the beds and bottoms of all water bodies of every nature and description the title of which vests in the State of Louisiana, together with all islands arising therein and other lands formed by accretion or by reliction, where allowed by law, excepting tax adjudicated lands, and not presently under mineral lease on November 12, 2003, situated in Plaquemines Parish, Louisiana, and more particularly described as follows: Beginning at the Southeast corner of Block 34, Breton Sound Area, having Coordinates of X = 2,664,850.00 and Y = 307,580.00; thence West 14,750.00 feet along the South line of said Block 34 to its Southwest corner, having Coordinates of X = 2,650,100.00 and Y = 307,580.00; thence North 995.79 feet along the West line of said Block 34 to a point, also being the Southwest corner of State Lease No. 14560, as amended, having Coordinates of X = 2,650,100.00 and Y = 308,575.79; thence along the boundary of said State Lease No. 14560 the following courses: East 4,590.00 feet and North 2,691.71 feet to the Northeast corner of said State Lease No. 14560, also being the Southeast corner of State Lease No. 14216, as amended, having Coordinates of X = 2,654,690.00 and Y = 311,267.50; thence along the boundary of said State Lease No. 14216 the following courses: North 1,750.00 feet and North 48 degrees 50 minutes 59 seconds East 2,944.37 feet to the Northeast corner of said State Lease No. 14216, also being the Southeast corner of the Western part of State Lease No. 14217, as amended, having Coordinates of X = 2,656,907.07 and Y = 314,955.00; thence North 48 degrees 50 minutes 59 seconds East 1,588.06 feet along the East line of said Western part of said State Lease No. 14217 to a point, also being the most Westerly corner of State Lease No. 17767, having Coordinates of X = 2,658,102.86 and Y = 316,000.00; thence along the boundary of said State Lease No. 17767 the following courses: South 41 degrees 09 minutes 01 seconds East 1,492.54 feet, South 4,171.14 feet, East 1,930.00 feet and North 5,131.48 feet to the most Easterly Northeast corner of said State Lease No. 17767, also being a point on the South line of the Eastern part of said State Lease No. 14217, having Coordinates of X = 2,661,015.00 and Y = 315,836.48; thence East 3,835.00 feet along the South line of said Eastern part of said State Lease No. 14217 to its Southeast corner, also being a point on the East line of said Block 34, having Coordinates of X = 2,664,850.00 and Y = 315,836.48; thence South 8,256.48 feet along the East line of said Block 34 to the point of beginning, containing approximately **1,690.31 acres**, all as more particularly outlined on a plat on file in the Office of Mineral Resources, Department of Natural Resources. All bearings, distances and coordinates are based on Louisiana Coordinate System of 1927, (North or South Zone), where applicable.

NOTE: The above description of the Tract nominated for lease has been provided and corrected, where required, exclusively by the nomination party. Any mineral lease selected from this Tract and awarded by the Louisiana State Mineral Board shall be without warranty of any kind, either express, implied, or statutory, including, but not limited to, the

implied warranties of merchantability and fitness for a particular purpose. Should the mineral lease awarded by the Louisiana State Mineral Board be subsequently modified, cancelled or abrogated due to the existence of conflicting leases, operating agreements, private claims or other future obligations or conditions which may affect all or any portion of the leased Tract, it shall not relieve the Lessee of the obligation to pay any bonus due thereon to the Louisiana State Mineral Board, nor shall the Louisiana State Mineral Board be obligated to refund any consideration paid by the Lessor prior to such modification, cancellation, or abrogation, including, but not limited to, bonuses, rentals and royalties.

NOTE: The State of Louisiana does hereby reserve, and this lease shall be subject to, the imprescriptible right of surface use in the nature of a servitude in favor of the Department of Natural Resources, including its Offices and Commissions, for the sole purpose of implementing, constructing, servicing and maintaining approved coastal zone management and/or restoration projects. Utilization of any and all rights derived under this lease by the mineral lessee, its agents, successors or assigns, shall not interfere with nor hinder the reasonable surface use by the Department of Natural Resources, its Offices or Commissions, as herein above reserved.

Applicant: Petro-Land Resources, Inc.

Bidder	Cash Payment	Price/Acre	Rental	Oil	Gas	Other



SL 14561

SL 14217

SL 17767

SL 14217

BRETON SOUND AREA

SL 14216

SL 14560

SL 16298

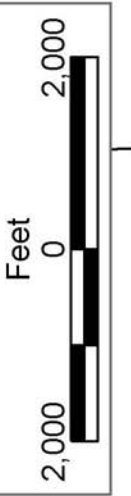
SL 16795

BLOCK BS0034

BLOCK BS0047

PLAQUEMINES PARISH

P.O.B.
X=2,664,850.00
Y=307,580.00



TRACT 35832 - Jefferson Parish, Louisiana

All of the lands now or formerly constituting the beds and bottoms of all water bodies of every nature and description the title of which vests in the State of Louisiana, together with all islands arising therein and other lands formed by accretion or by reliction, where allowed by law, excepting tax adjudicated lands, and not presently under mineral lease on November 12, 2003, situated in Jefferson Parish, Louisiana, and more particularly described as follows: Beginning at a point having Coordinates of X = 2,411,910.00 and Y = 313,270.00; thence South 7,840.00 feet to a point having Coordinates of X = 2,411,910.00 and Y = 305,430.00; thence West 12,720.00 feet to a point having Coordinates of X = 2,399,190.00 and Y = 305,430.00; thence North 7,840.00 feet to a point having Coordinates of X = 2,399,190.00 and Y = 313,270.00; thence East 12,720.00 feet to the point of beginning, containing approximately **695 acres**, all as more particularly outlined on a plat on file in the Office of Mineral Resources, Department of Natural Resources. All bearings, distances and coordinates are based on Louisiana Coordinate System of 1927, (North or South Zone), where applicable.

NOTE: The above description of the Tract nominated for lease has been provided and corrected, where required, exclusively by the nomination party. Any mineral lease selected from this Tract and awarded by the Louisiana State Mineral Board shall be without warranty of any kind, either express, implied, or statutory, including, but not limited to, the implied warranties of merchantability and fitness for a particular purpose. Should the mineral lease awarded by the Louisiana State Mineral Board be subsequently modified, cancelled or abrogated due to the existence of conflicting leases, operating agreements, private claims or other future obligations or conditions which may affect all or any portion of the leased Tract, it shall not relieve the Lessee of the obligation to pay any bonus due thereon to the Louisiana State Mineral Board, nor shall the Louisiana State Mineral Board be obligated to refund any consideration paid by the Lessor prior to such modification, cancellation, or abrogation, including, but not limited to, bonuses, rentals and royalties.

NOTE: The State of Louisiana does hereby reserve, and this lease shall be subject to, the imprescriptible right of surface use in the nature of a servitude in favor of the Department of Natural Resources, including its Offices and Commissions, for the sole purpose of implementing, constructing, servicing and maintaining approved coastal zone management and/or restoration projects. Utilization of any and all rights derived under this lease by the mineral lessee, its agents, successors or assigns, shall not interfere with nor hinder the reasonable surface use by the Department of Natural Resources, its Offices or Commissions, as herein above reserved.

NOTE: The Department of Wildlife and Fisheries has designated certain areas in the coastal waters of the State of Louisiana as Oyster Seed Bed Areas. The exact location of those Seed Bed Areas must be obtained from

the Department of Wildlife and Fisheries and any work done under a mineral lease from the State of Louisiana may necessarily be conducted in conformity with the rules and regulations promulgated by the said Department of Wildlife and Fisheries for Oyster Seed Bed Areas.

Applicant: Stone Energy Corporation

Bidder	Cash Payment	Price/Acre	Rental	Oil	Gas	Other



P.O.B.
X=2,411,910.00
Y=313,270.00

JEFFERSON PARISH

BAYOU ST. DENIS

T18S - R24E



Office of Mineral Resources, Acres: 695 Tract Number: 35832

NOVEMBER 2003

TRACT 35833 - Portion of Block 45, Breton Sound Area, Plaquemines Parish, Louisiana

All of the lands now or formerly constituting the beds and bottoms of all water bodies of every nature and description the title of which vests in the State of Louisiana, together with all islands arising therein and other lands formed by accretion or by reliction, where allowed by law, excepting tax adjudicated lands, and not presently under mineral lease on November 12, 2003, situated in Plaquemines Parish, Louisiana, and more particularly described as follows: Beginning at a point having Coordinates of X = 2,679,600.00 and Y = 307,580.00, said point being the Northwest corner of Block 45, Breton Sound Area; thence East 2,000.00 feet on and along the North line of said Block 45, to a point having Coordinates of X = 2,681,600.00 and Y = 307,580.00, said point being on the Western boundary of State Lease No. 1237, as amended; thence on and along said Western boundary of said State Lease No. 1237, as amended, and on and along the Eastern and southern boundaries of State Lease No. 2001, as amended, the following courses and distances, to wit: South 2,950.00 feet to a point having Coordinates of X = 2,681,600.00 and Y = 304,630.00; South 2,925.00 feet to a point having Coordinates of X = 2,681,600.00 and Y = 301,705.00; and East 6,025.35 feet to a point having Coordinates of X = 2,687,625.35 and Y = 301,705.00; thence South 15 degrees 04 minutes 09 seconds West 59.03 feet to a point having Coordinates of X = 2,687,610.00 and Y = 301,648.00; thence South 20 degrees 30 minutes 03 seconds West 1,701.78 feet to a point having Coordinates of X = 2,687,014.00 and Y = 300,054.00; thence South 38 degrees 15 minutes 07 seconds West 3,159.32 feet to a point having Coordinates of X = 2,685,058.00 and Y = 297,573.00; thence South 50 degrees 01 minutes 31 seconds West 2,341.04 feet to a point having Coordinates of X = 2,683,264.00 and Y = 296,069.00; thence South 64 degrees 13 minutes 43 seconds West 293.16 feet to a point having Coordinates of X = 2,683,000.00 and Y = 295,941.54, said point being on the Eastern boundary of State Lease No. 17691; thence on and along the Eastern and Northern boundaries of said State Lease No. 17691, the following courses and distances, to wit: North 20 degrees 26 minutes 18 seconds East 3,722.81 feet to a point having Coordinates of X = 2,684,300.00 and Y = 299,430.00; North 58 degrees 10 minutes 21 seconds West 3,413.21 feet to a point having Coordinates of X = 2,681,400.00 and Y = 301,230.00; and West 1,800.00 feet to a point having Coordinates of X = 2,679,600.00 and Y = 301,230.00, said point being on the West line of said Block 45; thence North 6,350.00 feet on and along said West line of said Block 45, to the point of beginning, containing approximately **638.19 acres**, all as more particularly outlined on a plat on file in the Office of Mineral Resources, Department of Natural Resources. All bearings, distances and coordinates are based on Louisiana Coordinate System of 1927, (North or South Zone), where applicable.

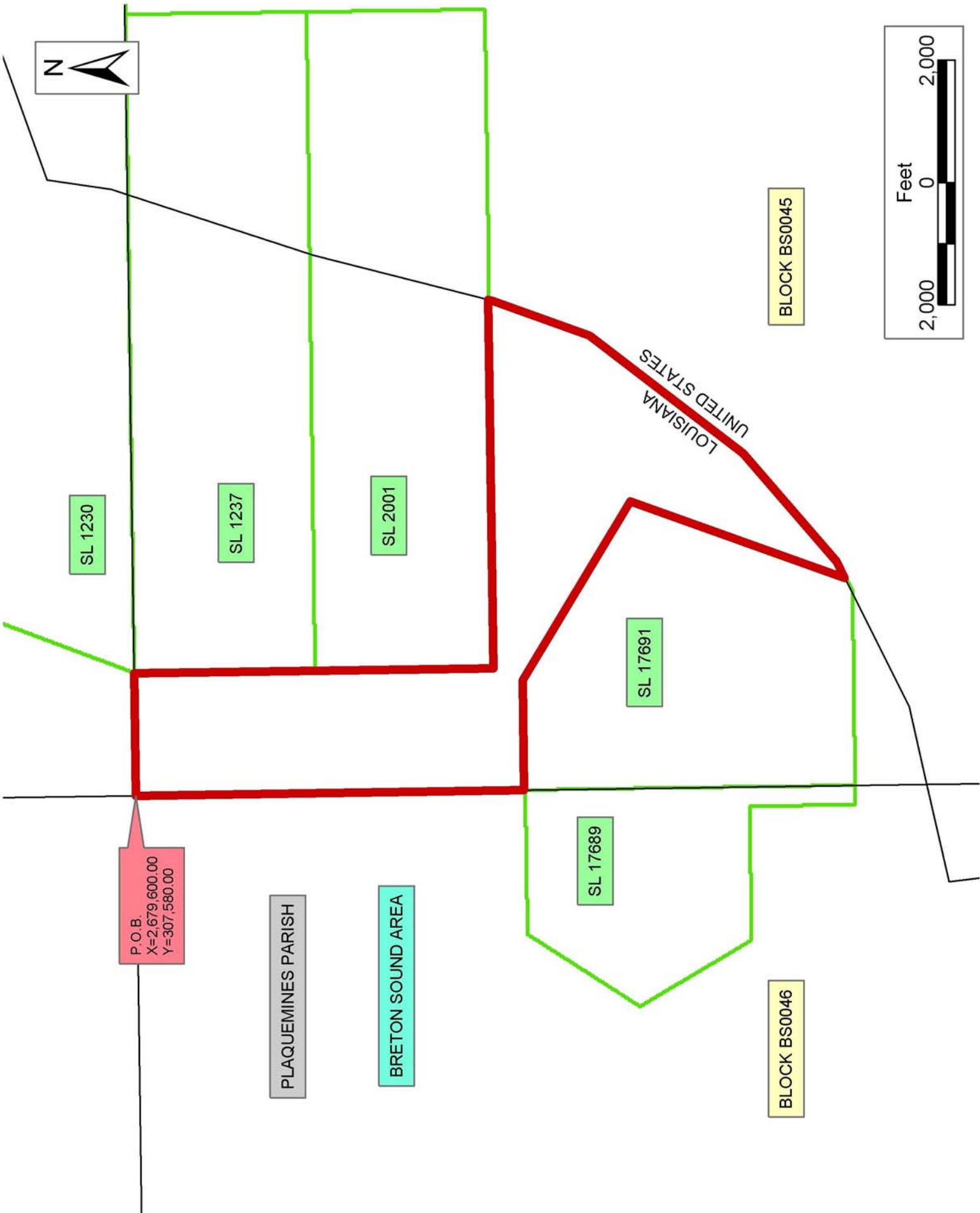
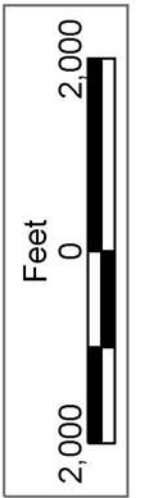
NOTE: The above description of the Tract nominated for lease has been provided and corrected, where required, exclusively by the nomination party. Any mineral lease selected from this Tract and awarded by the Louisiana State Mineral Board shall be without warranty of any kind,

either express, implied, or statutory, including, but not limited to, the implied warranties of merchantability and fitness for a particular purpose. Should the mineral lease awarded by the Louisiana State Mineral Board be subsequently modified, cancelled or abrogated due to the existence of conflicting leases, operating agreements, private claims or other future obligations or conditions which may affect all or any portion of the leased Tract, it shall not relieve the Lessee of the obligation to pay any bonus due thereon to the Louisiana State Mineral Board, nor shall the Louisiana State Mineral Board be obligated to refund any consideration paid by the Lessor prior to such modification, cancellation, or abrogation, including, but not limited to, bonuses, rentals and royalties.

NOTE: The State of Louisiana does hereby reserve, and this lease shall be subject to, the imprescriptible right of surface use in the nature of a servitude in favor of the Department of Natural Resources, including its Offices and Commissions, for the sole purpose of implementing, constructing, servicing and maintaining approved coastal zone management and/or restoration projects. Utilization of any and all rights derived under this lease by the mineral lessee, its agents, successors or assigns, shall not interfere with nor hinder the reasonable surface use by the Department of Natural Resources, its Offices or Commissions, as herein above reserved.

Applicant: Robert A. Schroeder, Inc.

Bidder	Cash Payment	Price/Acre	Rental	Oil	Gas	Other



P.O.B.
X=2,679,600.00
Y=307,580.00

PLAQUEMINES PARISH

BRETON SOUND AREA

BLOCK BS0045

BLOCK BS0046

LOUISIANA
UNITED STATES

SL 1230

SL 1237

SL 2001

SL 17689

SL 17691

TRACT 35834 - Portion of Block 45, Breton Sound Area, Plaquemines Parish, Louisiana

All of the lands now or formerly constituting the beds and bottoms of all water bodies of every nature and description the title of which vests in the State of Louisiana, together with all islands arising therein and other lands formed by accretion or by reliction, where allowed by law, excepting tax adjudicated lands, and not presently under mineral lease on November 12, 2003, situated in Plaquemines Parish, Louisiana, and more particularly described as follows: Beginning at a point having Coordinates of X = 2,679,600.00 and Y = 294,643.81, said point being on the West line of Block 45, Breton Sound Area; thence North 1,186.19 feet on and along said West line of said Block 45, to a point having Coordinates of X = 2,679,600.00 and Y = 295,830.00, said point also being on the Southern boundary of State Lease No. 17691; thence East 3,168.97 feet on and along said Southern boundary of said State Lease No. 17691, to a point having Coordinates of X = 2,682,768.97 and Y = 295,830.00; thence South 64 degrees 13 minutes 43 seconds West 2,097.61 feet to a point having Coordinates of X = 2,680,880.00 and Y = 294,918.00; thence South 77 degrees 54 minutes 34 seconds West 1,309.04 feet to the point of beginning, containing approximately **50.60 acres**, all as more particularly outlined on a plat on file in the Office of Mineral Resources, Department of Natural Resources. All bearings, distances and coordinates are based on Louisiana Coordinate System of 1927, (North or South Zone), where applicable.

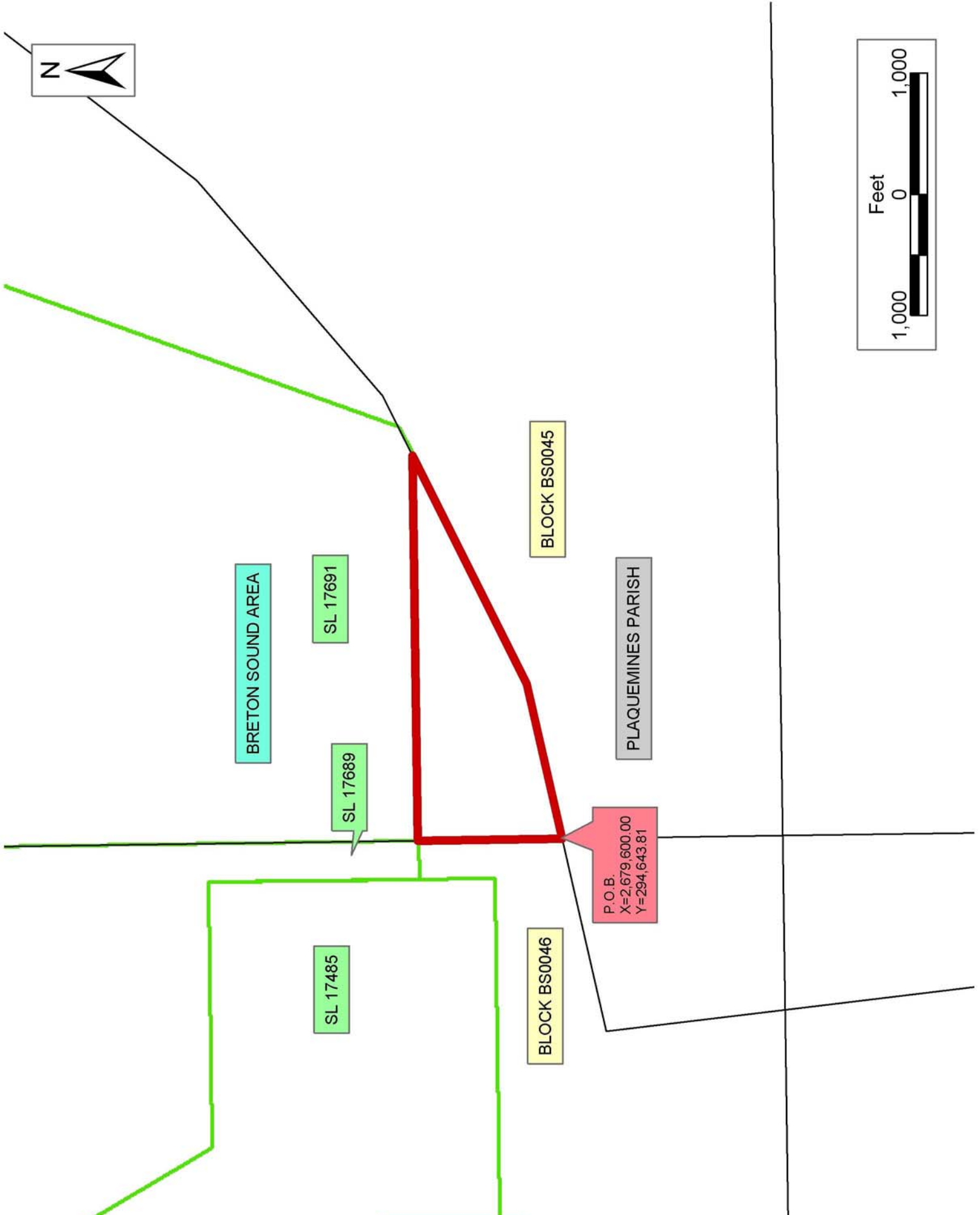
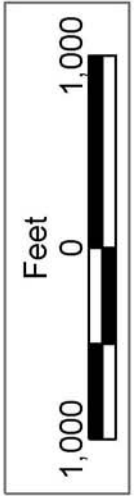
NOTE: The above description of the Tract nominated for lease has been provided and corrected, where required, exclusively by the nomination party. Any mineral lease selected from this Tract and awarded by the Louisiana State Mineral Board shall be without warranty of any kind, either express, implied, or statutory, including, but not limited to, the implied warranties of merchantability and fitness for a particular purpose. Should the mineral lease awarded by the Louisiana State Mineral Board be subsequently modified, cancelled or abrogated due to the existence of conflicting leases, operating agreements, private claims or other future obligations or conditions which may affect all or any portion of the leased Tract, it shall not relieve the Lessee of the obligation to pay any bonus due thereon to the Louisiana State Mineral Board, nor shall the Louisiana State Mineral Board be obligated to refund any consideration paid by the Lessor prior to such modification, cancellation, or abrogation, including, but not limited to, bonuses, rentals and royalties.

NOTE: The State of Louisiana does hereby reserve, and this lease shall be subject to, the imprescriptible right of surface use in the nature of a servitude in favor of the Department of Natural Resources, including its Offices and Commissions, for the sole purpose of implementing, constructing, servicing and maintaining approved coastal zone management and/or restoration projects. Utilization of any and all rights derived under this lease by the mineral lessee, its agents, successors or assigns, shall not interfere with nor hinder the reasonable surface use by the

Department of Natural Resources, its Offices or Commissions, as herein above reserved.

Applicant: Robert A. Schroeder, Inc.

Bidder	Cash Payment	Price/Acre	Rental	Oil	Gas	Other



Office of Mineral Resources, Acres: 50.6 Tract Number: 35834

TRACT 35835 - Terrebonne Parish, Louisiana

All of the lands now or formerly constituting the beds and bottoms of all water bodies of every nature and description the title of which vests in the State of Louisiana, together with all islands arising therein and other lands formed by accretion or by reliction, where allowed by law, excepting tax adjudicated lands, and not presently under mineral lease on November 12, 2003, situated in Terrebonne Parish, Louisiana, and more particularly described as follows: Beginning at a point having Coordinates of X = 2,206,420.00 and Y = 273,904.14; thence North 11,655.86 feet to a point having Coordinates of X = 2,206,420.00 and Y = 285,560.00; thence East 14,620.00 feet to a point having Coordinates of X = 2,221,040.00 and Y = 285,560.00; thence South 7,710.00 feet to a point on the North line of State Lease No. 5351, as amended having Coordinates of X = 2,221,040.00 and Y = 277,850.00; thence along the boundary of said State Lease No. 5351 the following courses: West 2,349.00 feet and South 21 degrees 37 minutes 43 seconds West 784.58 feet to the Northeast corner of State Lease No. 17754 having Coordinates of X = 2,218,401.81 and Y = 277,120.66; thence along the boundary of said State Lease No. 17754 the following courses: North 65 degrees 53 minutes 24 seconds West 6,079.65 feet and South 5,700.00 to its Southwest corner having Coordinates of X = 2,212,852.54 and Y = 273,904.14; thence West 6,432.54 feet to the point of beginning, containing approximately **658 acres**, all as more particularly outlined on a plat on file in the Office of Mineral Resources, Department of Natural Resources. All bearings, distances and coordinates are based on Louisiana Coordinate System of 1927, (North or South Zone), where applicable.

NOTE: The above description of the Tract nominated for lease has been provided and corrected, where required, exclusively by the nomination party. Any mineral lease selected from this Tract and awarded by the Louisiana State Mineral Board shall be without warranty of any kind, either express, implied, or statutory, including, but not limited to, the implied warranties of merchantability and fitness for a particular purpose. Should the mineral lease awarded by the Louisiana State Mineral Board be subsequently modified, cancelled or abrogated due to the existence of conflicting leases, operating agreements, private claims or other future obligations or conditions which may affect all or any portion of the leased Tract, it shall not relieve the Lessee of the obligation to pay any bonus due thereon to the Louisiana State Mineral Board, nor shall the Louisiana State Mineral Board be obligated to refund any consideration paid by the Lessor prior to such modification, cancellation, or abrogation, including, but not limited to, bonuses, rentals and royalties.

NOTE: The State of Louisiana does hereby reserve, and this lease shall be subject to, the imprescriptible right of surface use in the nature of a servitude in favor of the Department of Natural Resources, including its Offices and Commissions, for the sole purpose of implementing, constructing, servicing and maintaining approved coastal zone management and/or restoration projects. Utilization of any and all rights derived under this lease by the mineral lessee, its agents, successors or assigns,

shall not interfere with nor hinder the reasonable surface use by the Department of Natural Resources, its Offices or Commissions, as herein above reserved.

NOTE: The Department of Wildlife and Fisheries has designated certain areas in the coastal waters of the State of Louisiana as Oyster Seed Bed Areas. The exact location of those Seed Bed Areas must be obtained from the Department of Wildlife and Fisheries and any work done under a mineral lease from the State of Louisiana may necessarily be conducted in conformity with the rules and regulations promulgated by the said Department of Wildlife and Fisheries for Oyster Seed Bed Areas.

Applicant: Bradley Broussard Land Services, Inc.

Bidder	Cash Payment	Price/Acre	Rental	Oil	Gas	Other



TERREBONNE PARISH

LAKE BOUDREAU



SL 5351

SL 17754

T19S - R18E

T19S - R17E

P.O.B.
X=2,206,420.00
Y=273,904.14

03110095

TRACT 35836 - Terrebonne Parish, Louisiana

All of the lands now or formerly constituting the beds and bottoms of all water bodies of every nature and description the title of which vests in the State of Louisiana, together with all islands arising therein and other lands formed by accretion or by reliction, where allowed by law, excepting tax adjudicated lands, and not presently under mineral lease on November 12, 2003, situated in Terrebonne Parish, Louisiana, and more particularly described as follows: Beginning at a point having Coordinates of X = 2,206,420.00 and Y = 273,904.14; thence East 6,432.54 feet to the Southwest corner of State Lease No. 17754 having Coordinates of X = 2,212,852.54 and Y = 273,904.14; thence East 4,273.90 feet on the South line of said State Lease No. 17754 to its Southeast corner and a point on the West line of State Lease No. 5351, as amended having Coordinates of X = 2,217,126.44 and Y = 273,904.14; thence along the boundary of said State Lease No. 5351 the following courses: South 21 degrees 37 minutes 43 seconds West 4,683.92 feet and North 84 degrees 00 minutes 13 seconds East 1,680.52 feet to the Northwest corner of State Lease No. 17755 having Coordinates of X = 2,217,071.33 and Y = 269,725.56; thence along the boundary of said State Lease No. 17755 the following courses: South 1,906.42 feet and North 84 degrees 00 minutes 13 seconds East 2,592.86 feet to its Southeast corner and the Southwest corner of State Lease No. 17535 having Coordinates of X = 2,219,650.00 and Y = 268,090.00; thence East 3,090.00 feet on the South line of said State Lease No. 17535 to its Southeast corner having Coordinates of X = 2,222,740.00 and Y = 268,090.00; thence East 920.00 feet to a point having Coordinates of X = 2,223,660.00 and Y = 268,090.00; thence South 1,800.00 feet to a point having Coordinates of X = 2,223,660.00 and Y = 266,290.00; thence West 17,240.00 feet to a point having Coordinates of X = 2,206,420.00 and Y = 266,290.00; thence North 7,614.14 feet to the point of beginning, containing approximately **1,791 acres**, all as more particularly outlined on a plat on file in the Office of Mineral Resources, Department of Natural Resources. All bearings, distances and coordinates are based on Louisiana Coordinate System of 1927, (North or South Zone), where applicable.

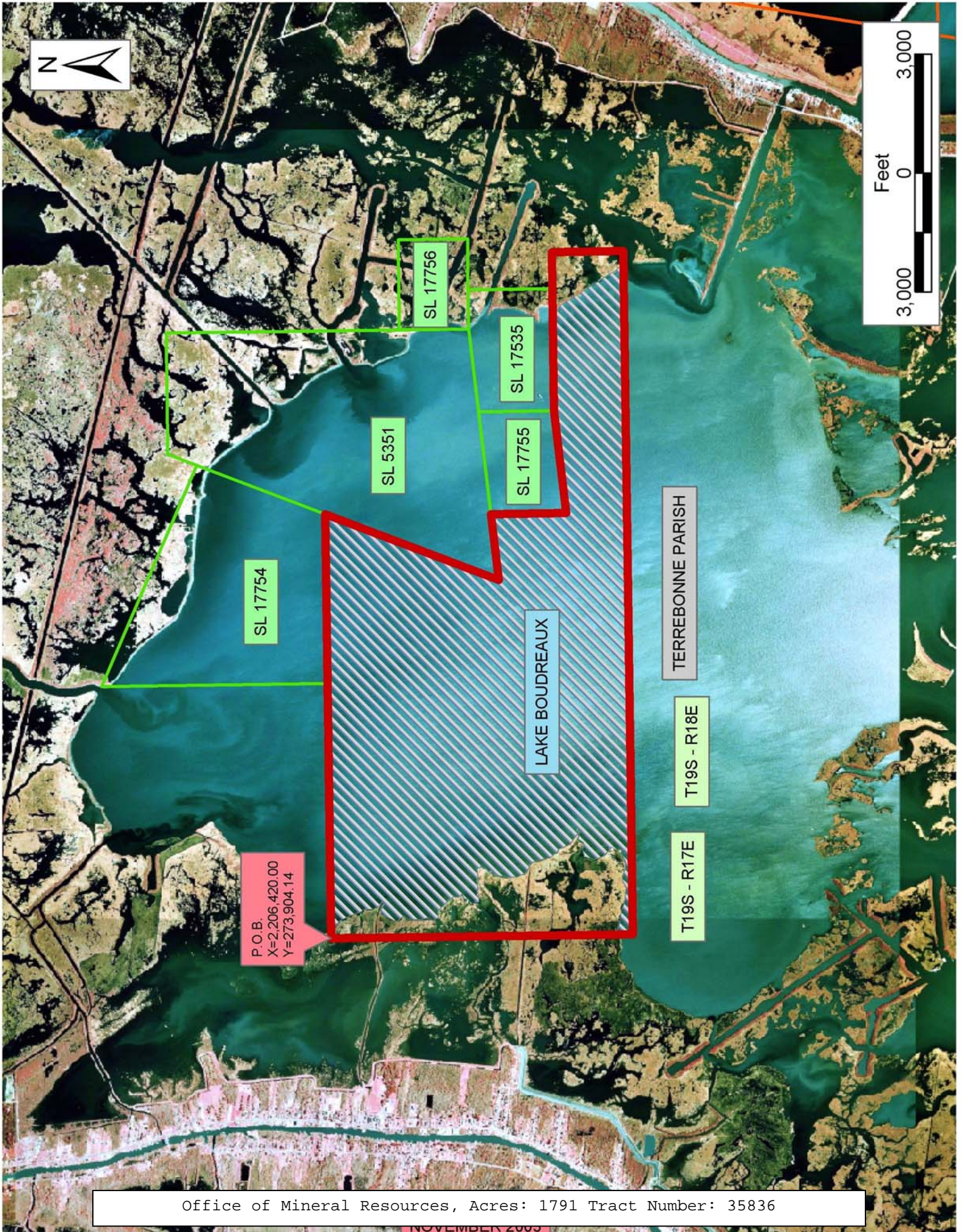
NOTE: The above description of the Tract nominated for lease has been provided and corrected, where required, exclusively by the nomination party. Any mineral lease selected from this Tract and awarded by the Louisiana State Mineral Board shall be without warranty of any kind, either express, implied, or statutory, including, but not limited to, the implied warranties of merchantability and fitness for a particular purpose. Should the mineral lease awarded by the Louisiana State Mineral Board be subsequently modified, cancelled or abrogated due to the existence of conflicting leases, operating agreements, private claims or other future obligations or conditions which may affect all or any portion of the leased Tract, it shall not relieve the Lessee of the obligation to pay any bonus due thereon to the Louisiana State Mineral Board, nor shall the Louisiana State Mineral Board be obligated to refund any consideration paid by the Lessor prior to such modification, cancellation, or abrogation, including, but not limited to, bonuses, rentals and royalties.

NOTE: The State of Louisiana does hereby reserve, and this lease shall be subject to, the imprescriptible right of surface use in the nature of a servitude in favor of the Department of Natural Resources, including its Offices and Commissions, for the sole purpose of implementing, constructing, servicing and maintaining approved coastal zone management and/or restoration projects. Utilization of any and all rights derived under this lease by the mineral lessee, its agents, successors or assigns, shall not interfere with nor hinder the reasonable surface use by the Department of Natural Resources, its Offices or Commissions, as herein above reserved.

NOTE: The Department of Wildlife and Fisheries has designated certain areas in the coastal waters of the State of Louisiana as Oyster Seed Bed Areas. The exact location of those Seed Bed Areas must be obtained from the Department of Wildlife and Fisheries and any work done under a mineral lease from the State of Louisiana may necessarily be conducted in conformity with the rules and regulations promulgated by the said Department of Wildlife and Fisheries for Oyster Seed Bed Areas.

Applicant: Bradley Broussard Land Services, Inc.

Bidder	Cash Payment	Price/Acre	Rental	Oil	Gas	Other



TRACT 35837 - Terrebonne Parish, Louisiana

All of the lands now or formerly constituting the beds and bottoms of all water bodies of every nature and description the title of which vests in the State of Louisiana, together with all islands arising therein and other lands formed by accretion or by reliction, where allowed by law, excepting tax adjudicated lands, and not presently under mineral lease on November 12, 2003, situated in Terrebonne Parish, Louisiana, and more particularly described as follows: Beginning at a point having Coordinates of X = 2,206,420.00 and Y = 266,290.00; thence East 17,240.00 feet to a point having Coordinates of X = 2,223,660.00 and Y = 266,290.00; thence South 7,000.00 feet to a point having Coordinates of X = 2,223,660.00 and Y = 259,290.00; thence West 17,240.00 feet to a point having Coordinates of X = 2,206,420.00 and Y = 259,290.00; thence North 7,000.00 feet to the point of beginning, **LESS AND EXCEPT** Operating Agreements AO 115 and AO 116 that lie within the above described tract, containing approximately **2,077 acres**, all as more particularly outlined on a plat on file in the Office of Mineral Resources, Department of Natural Resources. All bearings, distances and coordinates are based on Louisiana Coordinate System of 1927, (North or South Zone), where applicable.

NOTE: The above description of the Tract nominated for lease has been provided and corrected, where required, exclusively by the nomination party. Any mineral lease selected from this Tract and awarded by the Louisiana State Mineral Board shall be without warranty of any kind, either express, implied, or statutory, including, but not limited to, the implied warranties of merchantability and fitness for a particular purpose. Should the mineral lease awarded by the Louisiana State Mineral Board be subsequently modified, cancelled or abrogated due to the existence of conflicting leases, operating agreements, private claims or other future obligations or conditions which may affect all or any portion of the leased Tract, it shall not relieve the Lessee of the obligation to pay any bonus due thereon to the Louisiana State Mineral Board, nor shall the Louisiana State Mineral Board be obligated to refund any consideration paid by the Lessor prior to such modification, cancellation, or abrogation, including, but not limited to, bonuses, rentals and royalties.

NOTE: The State of Louisiana does hereby reserve, and this lease shall be subject to, the imprescriptible right of surface use in the nature of a servitude in favor of the Department of Natural Resources, including its Offices and Commissions, for the sole purpose of implementing, constructing, servicing and maintaining approved coastal zone management and/or restoration projects. Utilization of any and all rights derived under this lease by the mineral lessee, its agents, successors or assigns, shall not interfere with nor hinder the reasonable surface use by the Department of Natural Resources, its Offices or Commissions, as herein above reserved.

NOTE: The Department of Wildlife and Fisheries has designated certain areas in the coastal waters of the State of Louisiana as Oyster Seed Bed

Areas. The exact location of those Seed Bed Areas must be obtained from the Department of Wildlife and Fisheries and any work done under a mineral lease from the State of Louisiana may necessarily be conducted in conformity with the rules and regulations promulgated by the said Department of Wildlife and Fisheries for Oyster Seed Bed Areas.

Applicant: Bradley Broussard Land Services, Inc.

Bidder	Cash Payment	Price/Acre	Rental	Oil	Gas	Other

