

TRACT 35770 - St. Bernard Parish, Louisiana

All of the lands now or formerly constituting the beds and bottoms of all water bodies of every nature and description the title of which vests in the State of Louisiana, together with all islands arising therein and other lands formed by accretion or by reliction, where allowed by law, excepting tax adjudicated lands, and not presently under mineral lease on November 12, 2003, situated in St. Bernard Parish, Louisiana, and more particularly described as follows: Beginning at a point having Coordinates of X = 2,588,451.26 and Y = 496,636.00; thence South 11,170.88 feet to a point on the boundary of the Biloxi Wildlife Management Area having Coordinates of X = 2,588,451.26 and Y = 485,465.12; thence along the boundary of said Biloxi Wildlife Management Area the following courses and distances: South 90.89 feet, South 01 degrees 43 minutes 35 seconds East 909.19 feet, South 01 degrees 53 minutes 34 seconds East 1,316.57 feet, South 01 degrees 55 minutes 23 seconds East 318.24 feet, South 88 degrees 25 minutes 43 seconds West 1,307.65 feet, South 88 degrees 28 minutes 04 seconds West 1,308.47 feet, South 88 degrees 28 minutes 04 seconds West 1,308.47 feet, South 88 degrees 28 minutes 06 seconds West 1,310.20 feet, North 01 degrees 05 minutes 52 seconds West 461.83 feet, North 01 degrees 00 minutes 18 seconds West 2,134.58 feet, North 01 degrees 38 minutes 25 seconds West 1,007.37 feet, North 02 degrees 10 minutes 58 seconds West 287.35 feet, North 01 degrees 34 minutes 45 seconds West 825.52 feet, North 01 degrees 26 minutes 03 seconds West 352.75 feet, North 02 degrees 58 minutes 47 seconds West 2,114.13 feet, North 02 degrees 30 minutes 16 seconds West 229.18 feet, North 03 degrees 02 minutes 11 seconds West 600.41 feet, South 88 degrees 14 minutes 02 seconds West 3,194.24 feet and South 86 degrees 30 minutes 57 seconds West 2,027.90 feet to a point on the East line of State Lease No. 17769 and a point on the boundary of said Biloxi Wildlife Management Area having Coordinates of X = 2,577,813.68 and Y = 490,476.73; thence along the boundary of said State Lease No. 17769 and said boundary of Biloxi Wildlife Management Area the following courses and distances: North 02 degrees 52 minutes 58 seconds West 5,341.39 feet and North 03 degrees 50 minutes 37 seconds West 123.80 feet to the Northeast corner of said State Lease No. 17769 and a point on the boundary of said Biloxi Wildlife Management Area having Coordinates of X = 2,577,536.76 and Y = 495,934.88; thence along the boundary of said Biloxi Wildlife Management Area the following courses and distances: North 86 degrees 30 minutes 25 seconds East 161.58 feet, North 87 degrees 27 minutes 15 seconds East 1,149.34 feet, North 87 degrees 25 minutes 44 seconds East 503.43 feet, North 87 degrees 33 minutes 11 seconds East 816.84 feet, North 87 degrees 02 minutes 54 seconds East 307.19 feet, North 87 degrees 07 minutes 21 seconds East 2,340.25 feet and North 14 degrees 01 minutes 03 seconds West 463.25 feet to a point on the boundary of said Biloxi Wildlife Management Area having Coordinates of X = 2,582,697.14 and Y = 496,636.00; thence East 5,754.12 feet to the point of beginning, **LESS AND EXCEPT** any portion of the above described tract that may lie within the boundaries of the Biloxi Wildlife Management Area, containing approximately **1,320 acres**, all as more particularly outlined on a plat on file in the Office of Mineral Resources, Department of Natural

Resources. All bearings, distances and coordinates are based on Louisiana Coordinate System of 1927, (North or South Zone), where applicable.

NOTE: The Office of Mineral Resources will require a minimum bonus of \$230 per acre and a minimum royalty of 23%.

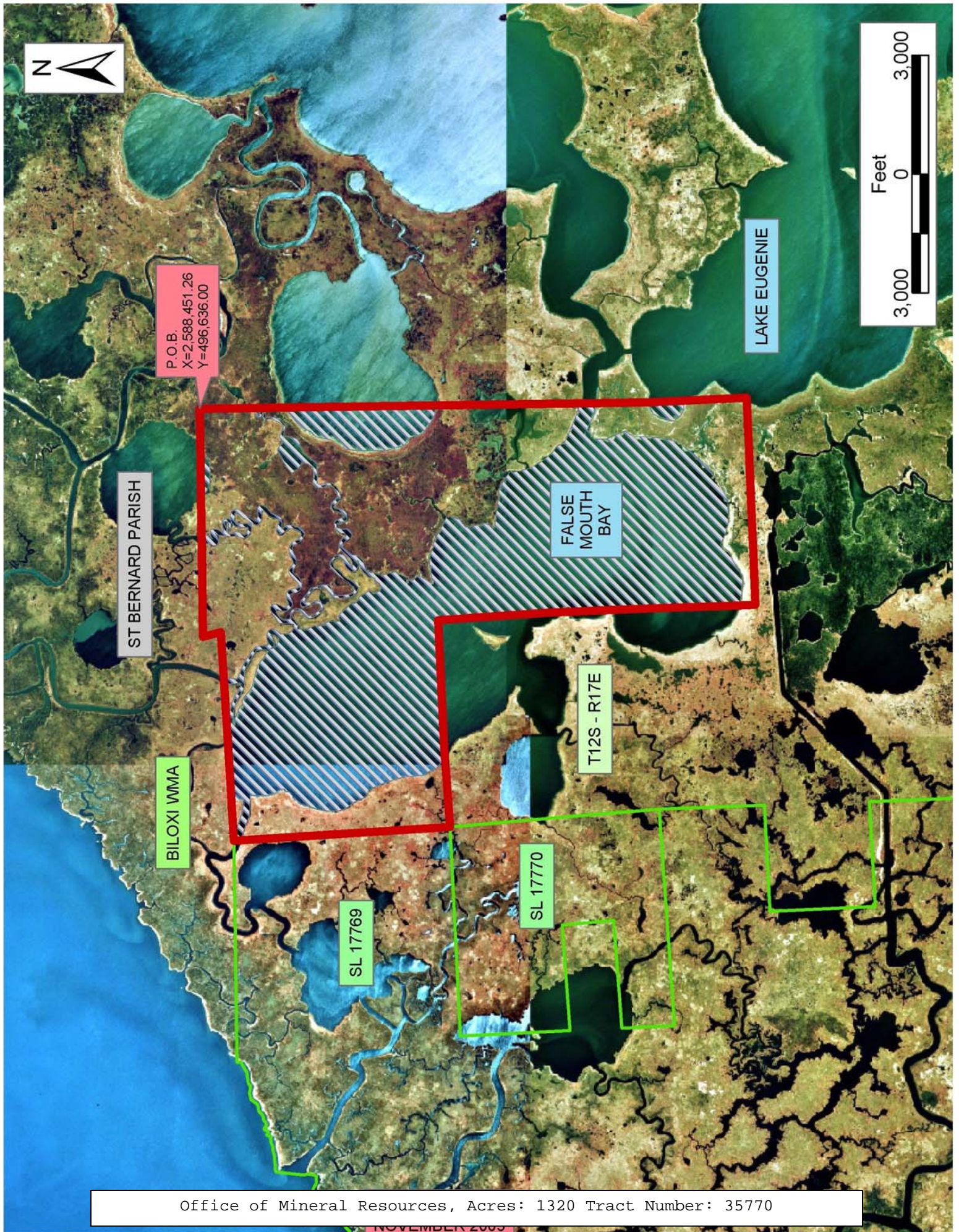
NOTE: The above description of the Tract nominated for lease has been provided and corrected, where required, exclusively by the nomination party. Any mineral lease selected from this Tract and awarded by the Louisiana State Mineral Board shall be without warranty of any kind, either express, implied, or statutory, including, but not limited to, the implied warranties of merchantability and fitness for a particular purpose. Should the mineral lease awarded by the Louisiana State Mineral Board be subsequently modified, cancelled or abrogated due to the existence of conflicting leases, operating agreements, private claims or other future obligations or conditions which may affect all or any portion of the leased Tract, it shall not relieve the Lessee of the obligation to pay any bonus due thereon to the Louisiana State Mineral Board, nor shall the Louisiana State Mineral Board be obligated to refund any consideration paid by the Lessor prior to such modification, cancellation, or abrogation, including, but not limited to, bonuses, rentals and royalties.

NOTE: The State of Louisiana does hereby reserve, and this lease shall be subject to, the imprescriptible right of surface use in the nature of a servitude in favor of the Department of Natural Resources, including its Offices and Commissions, for the sole purpose of implementing, constructing, servicing and maintaining approved coastal zone management and/or restoration projects. Utilization of any and all rights derived under this lease by the mineral lessee, its agents, successors or assigns, shall not interfere with nor hinder the reasonable surface use by the Department of Natural Resources, its Offices or Commissions, as herein above reserved.

NOTE: The Department of Wildlife and Fisheries has designated certain areas in the coastal waters of the State of Louisiana as Oyster Seed Bed Areas. The exact location of those Seed Bed Areas must be obtained from the Department of Wildlife and Fisheries and any work done under a mineral lease from the State of Louisiana may necessarily be conducted in conformity with the rules and regulations promulgated by the said Department of Wildlife and Fisheries for Oyster Seed Bed Areas.

Applicant: Kare-Sue Energy, Inc.

Bidder	Cash Payment	Price/ Acre	Rental	Oil	Gas	Other



TRACT 35771 - St. Bernard Parish, Louisiana

All of the lands now or formerly constituting the beds and bottoms of all water bodies of every nature and description the title of which vests in the State of Louisiana, together with all islands arising therein and other lands formed by accretion or by reliction, where allowed by law, excepting tax adjudicated lands, and not presently under mineral lease on November 12, 2003, situated in St. Bernard Parish, Louisiana, and more particularly described as follows: Beginning at a point having Coordinates of X = 2,598,758.00 and Y = 496,636.00; thence South 5,266.89 feet to a point on the Northern boundary line of Biloxi Wildlife Management Area having Coordinates of X = 2,598,758.00 and Y = 491,369.11; thence along the boundary of said Biloxi Wildlife Management Area the following courses and distances: South 87 degrees 44 minutes 54 seconds West 5,086.08 feet, South 00 degrees 49 minutes 40 seconds East 1,643.66 feet, South 00 degrees 20 minutes 35 seconds East 1,832.86 feet, South 00 degrees 20 minutes 22 seconds East 1,821.95 feet, South 00 degrees 24 minutes 22 seconds East 341.84 feet, South 89 degrees 16 minutes 09 seconds West 3,064.58 feet, South 89 degrees 18 minutes 29 seconds West 1,741.24 feet and South 89 degrees 30 minutes 44 seconds West 467.09 feet to a point on the Northern boundary line of said Biloxi Wildlife Management Area having Coordinates of X = 2,588,451.26 and Y = 485,465.12; thence North 11,170.88 feet to a point having Coordinates of X = 2,588,451.26 and Y = 496,636.00; thence East 10,306.74 feet to the point of beginning, **LESS AND EXCEPT** any portion of the Biloxi Wildlife Management Area that may lie within the above described tract, containing approximately **903 acres**, all as more particularly outlined on a plat on file in the Office of Mineral Resources, Department of Natural Resources. All bearings, distances and coordinates are based on Louisiana Coordinate System of 1927, (North or South Zone), where applicable.

NOTE: The Office of Mineral Resources will require a minimum bonus of \$230 per acre and a minimum royalty of 23%.

NOTE: The above description of the Tract nominated for lease has been provided and corrected, where required, exclusively by the nomination party. Any mineral lease selected from this Tract and awarded by the Louisiana State Mineral Board shall be without warranty of any kind, either express, implied, or statutory, including, but not limited to, the implied warranties of merchantability and fitness for a particular purpose. Should the mineral lease awarded by the Louisiana State Mineral Board be subsequently modified, cancelled or abrogated due to the existence of conflicting leases, operating agreements, private claims or other future obligations or conditions which may affect all or any portion of the leased Tract, it shall not relieve the Lessee of the obligation to pay any bonus due thereon to the Louisiana State Mineral Board, nor shall the Louisiana State Mineral Board be obligated to refund any consideration paid by the Lessor prior to such modification, cancellation, or abrogation, including, but not limited to, bonuses, rentals and royalties.

NOTE: The State of Louisiana does hereby reserve, and this lease shall be subject to, the imprescriptible right of surface use in the nature of a servitude in favor of the Department of Natural Resources, including its Offices and Commissions, for the sole purpose of implementing, constructing, servicing and maintaining approved coastal zone management and/or restoration projects. Utilization of any and all rights derived under this lease by the mineral lessee, its agents, successors or assigns, shall not interfere with nor hinder the reasonable surface use by the Department of Natural Resources, its Offices or Commissions, as herein above reserved.

NOTE: The Department of Wildlife and Fisheries has designated certain areas in the coastal waters of the State of Louisiana as Oyster Seed Bed Areas. The exact location of those Seed Bed Areas must be obtained from the Department of Wildlife and Fisheries and any work done under a mineral lease from the State of Louisiana may necessarily be conducted in conformity with the rules and regulations promulgated by the said Department of Wildlife and Fisheries for Oyster Seed Bed Areas.

Applicant: Kare-Sue Energy, Inc.

Bidder	Cash Payment	Price/ Acre	Rental	Oil	Gas	Other



P.O.B.
X=2,598,758.00
Y=496,636.00

FALSE MOUTH BAY

ST BERNARD PARISH

T12S - R17E

T12S - R18E

BILOXI VMA



TRACT 35772 - St. Bernard Parish, Louisiana

All of the lands now or formerly constituting the beds and bottoms of all water bodies of every nature and description the title of which vests in the State of Louisiana, together with all islands arising therein and other lands formed by accretion or by reliction, where allowed by law, excepting tax adjudicated lands, and not presently under mineral lease on November 12, 2003, situated in St. Bernard Parish, Louisiana, and more particularly described as follows: Beginning at a point having Coordinates of X = 2,604,121.00 and Y = 491,047.00; thence East 10,395.00 feet to a point having Coordinates of X = 2,614,516.00 and Y = 491,047.00; thence South 5,589.00 feet to a point having Coordinates of X = 2,614,516.00 and Y = 485,458.00; thence West 10,395.00 feet to a point having Coordinates of X = 2,604,121.00 and Y = 485,458.00; thence North 5,589.00 feet to the point of beginning, containing approximately **1,330 acres**, all as more particularly outlined on a plat on file in the Office of Mineral Resources, Department of Natural Resources. All bearings, distances and coordinates are based on Louisiana Coordinate System of 1927, (North or South Zone), where applicable.

NOTE: The Office of Mineral Resources will require a minimum bonus of \$230 per acre and a minimum royalty of 23%.

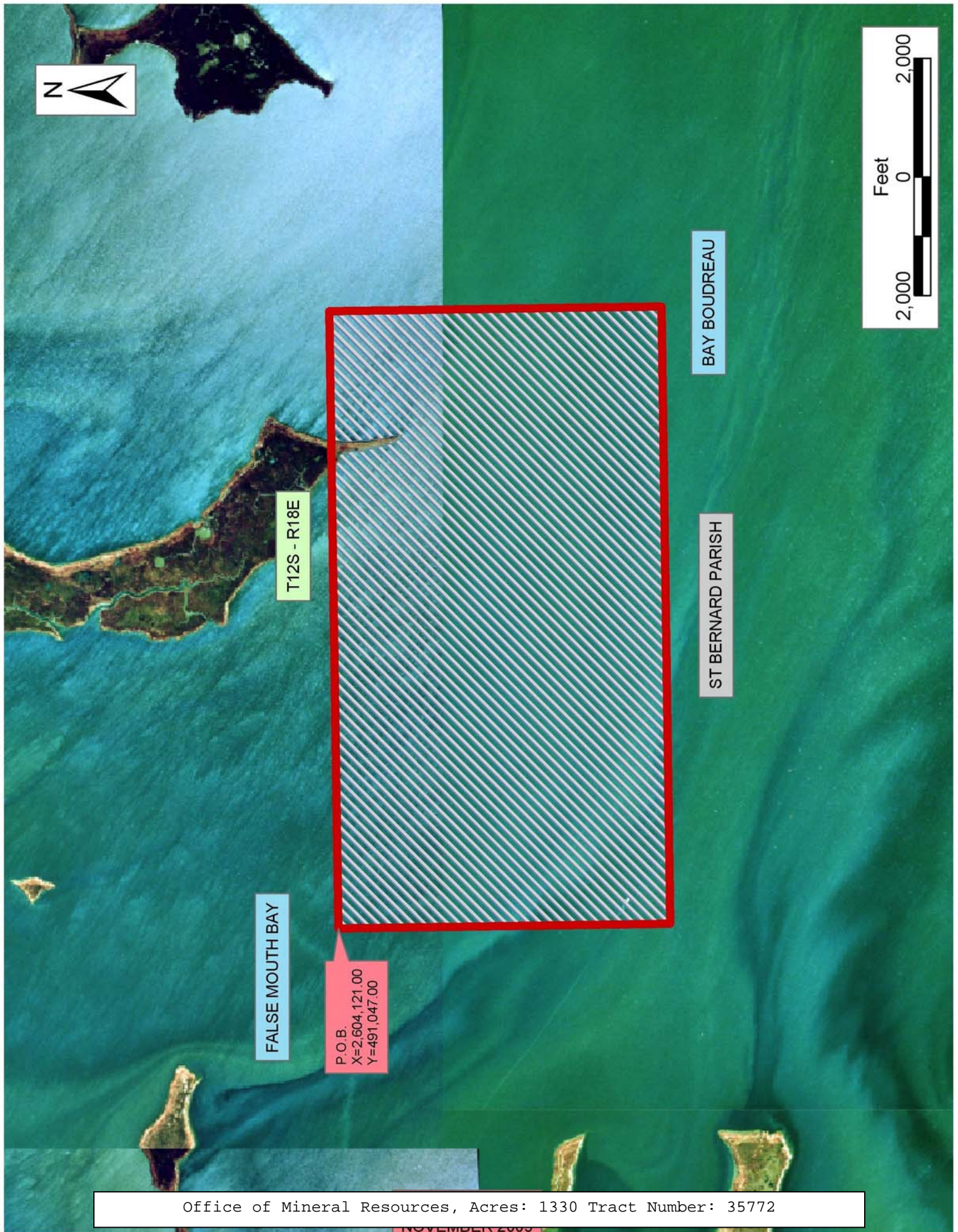
NOTE: The above description of the Tract nominated for lease has been provided and corrected, where required, exclusively by the nomination party. Any mineral lease selected from this Tract and awarded by the Louisiana State Mineral Board shall be without warranty of any kind, either express, implied, or statutory, including, but not limited to, the implied warranties of merchantability and fitness for a particular purpose. Should the mineral lease awarded by the Louisiana State Mineral Board be subsequently modified, cancelled or abrogated due to the existence of conflicting leases, operating agreements, private claims or other future obligations or conditions which may affect all or any portion of the leased Tract, it shall not relieve the Lessee of the obligation to pay any bonus due thereon to the Louisiana State Mineral Board, nor shall the Louisiana State Mineral Board be obligated to refund any consideration paid by the Lessor prior to such modification, cancellation, or abrogation, including, but not limited to, bonuses, rentals and royalties.

NOTE: The State of Louisiana does hereby reserve, and this lease shall be subject to, the imprescriptible right of surface use in the nature of a servitude in favor of the Department of Natural Resources, including its Offices and Commissions, for the sole purpose of implementing, constructing, servicing and maintaining approved coastal zone management and/or restoration projects. Utilization of any and all rights derived under this lease by the mineral lessee, its agents, successors or assigns, shall not interfere with nor hinder the reasonable surface use by the Department of Natural Resources, its Offices or Commissions, as herein above reserved.

NOTE: The Department of Wildlife and Fisheries has designated certain areas in the coastal waters of the State of Louisiana as Oyster Seed Bed Areas. The exact location of those Seed Bed Areas must be obtained from the Department of Wildlife and Fisheries and any work done under a mineral lease from the State of Louisiana may necessarily be conducted in conformity with the rules and regulations promulgated by the said Department of Wildlife and Fisheries for Oyster Seed Bed Areas.

Applicant: Kare-Sue Energy, Inc.

Bidder	Cash Payment	Price/ Acre	Rental	Oil	Gas	Other



T12S - R18E

FALSE MOUTH BAY

P.O.B.
X=2,604,121.00
Y=491,047.00

BAY BOUDREAU

ST BERNARD PARISH

TRACT 35773 - Portion of Block 46, Chandeleur Sound Area Add, Revised, St. Bernard Parish, Louisiana

All of the lands now or formerly constituting the beds and bottoms of all water bodies of every nature and description the title of which vests in the State of Louisiana, together with all islands arising therein and other lands formed by accretion or by reliction, where allowed by law, excepting tax adjudicated lands, and not presently under mineral lease on November 12, 2003, situated in St. Bernard Parish, Louisiana, and more particularly described as follows: Beginning at a point within Block 46, Chandeleur Sound Area Addition, Revised, having Coordinates of X = 2,630,274.00 and Y = 491,047.00; thence South 5,589.00 feet to a point having Coordinates of X = 2,630,274.00 and Y = 485,458.00; thence West 15,758.00 feet to a point having Coordinates of X = 2,614,516.00 and Y = 485,458.00; thence North 5,589.00 feet to a point having Coordinates of X = 2,614,516.00 and Y = 491,047.00; thence East 15,758.00 feet to the point of beginning, containing approximately **2,012 acres**, all as more particularly outlined on a plat on file in the Office of Mineral Resources, Department of Natural Resources. All bearings, distances and coordinates are based on Louisiana Coordinate System of 1927, (North or South Zone), where applicable.

NOTE: The Office of Mineral Resources will require a minimum bonus of \$230 per acre and a minimum royalty of 23%.

NOTE: The above description of the Tract nominated for lease has been provided and corrected, where required, exclusively by the nomination party. Any mineral lease selected from this Tract and awarded by the Louisiana State Mineral Board shall be without warranty of any kind, either express, implied, or statutory, including, but not limited to, the implied warranties of merchantability and fitness for a particular purpose. Should the mineral lease awarded by the Louisiana State Mineral Board be subsequently modified, cancelled or abrogated due to the existence of conflicting leases, operating agreements, private claims or other future obligations or conditions which may affect all or any portion of the leased Tract, it shall not relieve the Lessee of the obligation to pay any bonus due thereon to the Louisiana State Mineral Board, nor shall the Louisiana State Mineral Board be obligated to refund any consideration paid by the Lessor prior to such modification, cancellation, or abrogation, including, but not limited to, bonuses, rentals and royalties.

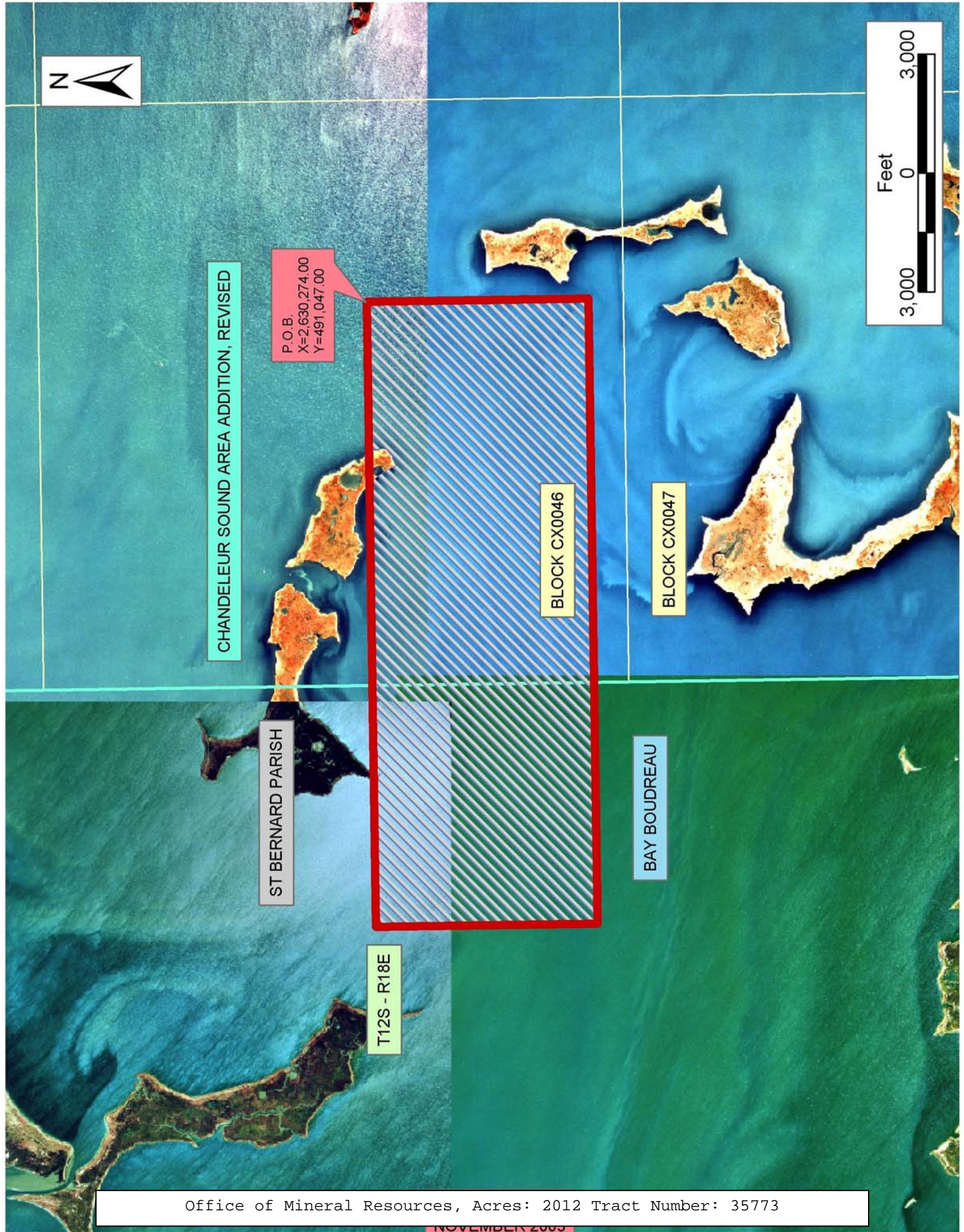
NOTE: The State of Louisiana does hereby reserve, and this lease shall be subject to, the imprescriptible right of surface use in the nature of a servitude in favor of the Department of Natural Resources, including its Offices and Commissions, for the sole purpose of implementing, constructing, servicing and maintaining approved coastal zone management and/or restoration projects. Utilization of any and all rights derived under this lease by the mineral lessee, its agents, successors or assigns, shall not interfere with nor hinder the reasonable surface use by the

Department of Natural Resources, its Offices or Commissions, as herein above reserved.

NOTE: The Department of Wildlife and Fisheries has designated certain areas in the coastal waters of the State of Louisiana as Oyster Seed Bed Areas. The exact location of those Seed Bed Areas must be obtained from the Department of Wildlife and Fisheries and any work done under a mineral lease from the State of Louisiana may necessarily be conducted in conformity with the rules and regulations promulgated by the said Department of Wildlife and Fisheries for Oyster Seed Bed Areas.

Applicant: Kare-Sue Energy, Inc.

Bidder	Cash Payment	Price/ Acre	Rental	Oil	Gas	Other



TRACT 35774 - St. Bernard Parish, Louisiana

All of the lands now or formerly constituting the beds and bottoms of all water bodies of every nature and description the title of which vests in the State of Louisiana, together with all islands arising therein and other lands formed by accretion or by reliction, where allowed by law, excepting tax adjudicated lands, and not presently under mineral lease on November 12, 2003, situated in St. Bernard Parish, Louisiana, and more particularly described as follows: Beginning at a point having Coordinates of X = 2,604,121.00 and Y = 491,047.00; thence South 11,178.00 feet to a point having Coordinates of X = 2,604,121.00 and Y = 479,869.00; thence West 4,594.77 feet to a point on the Eastern boundary line of the Biloxi Wildlife Management Area having Coordinates of X = 2,599,526.23 and Y = 479,869.00; thence along the boundary of said Biloxi Wildlife Management Area the following courses and distances: North 01 degrees 45 minutes 04 seconds West 463.89 feet, South 89 degrees 43 minutes 31 seconds West 5,620.61 feet, North 01 degrees 50 minutes 38 seconds West 2,600.36 feet, North 01 degrees 50 minutes 05 seconds West 2,625.82 feet, North 88 degrees 52 minutes 34 seconds East 4,555.71 feet, North 88 degrees 51 minutes 44 seconds East 1,082.73 feet, North 02 degrees 49 minutes 18 seconds West 1,837.38 feet, North 02 degrees 58 minutes 50 seconds West 356.59 feet and North 02 degrees 47 minutes 00 seconds West 3,219.46 feet to a point on the East line of said Biloxi Wildlife Management Area having Coordinates of X = 2,599,095.81 and Y = 491,047.00; thence East 5,025.19 feet to the point of beginning, **LESS AND EXCEPT** any portion of the Biloxi Wildlife Management Area that may lie within the above described tract, containing approximately **1,589 acres**, all as more particularly outlined on a plat on file in the Office of Mineral Resources, Department of Natural Resources. All bearings, distances and coordinates are based on Louisiana Coordinate System of 1927, (North or South Zone), where applicable.

NOTE: The Office of Mineral Resources will require a minimum bonus of \$230 per acre and a minimum royalty of 23%.

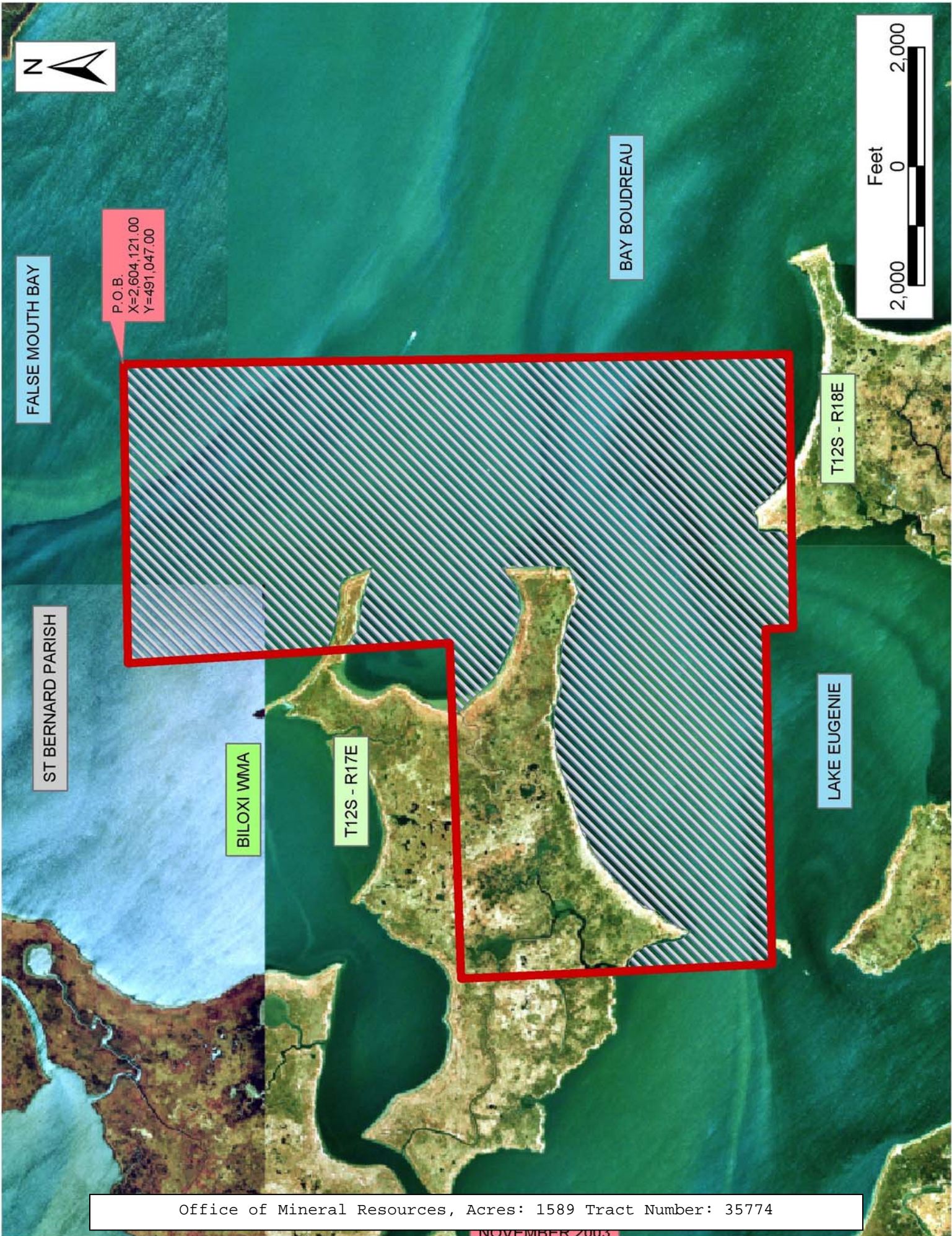
NOTE: The above description of the Tract nominated for lease has been provided and corrected, where required, exclusively by the nomination party. Any mineral lease selected from this Tract and awarded by the Louisiana State Mineral Board shall be without warranty of any kind, either express, implied, or statutory, including, but not limited to, the implied warranties of merchantability and fitness for a particular purpose. Should the mineral lease awarded by the Louisiana State Mineral Board be subsequently modified, cancelled or abrogated due to the existence of conflicting leases, operating agreements, private claims or other future obligations or conditions which may affect all or any portion of the leased Tract, it shall not relieve the Lessee of the obligation to pay any bonus due thereon to the Louisiana State Mineral Board, nor shall the Louisiana State Mineral Board be obligated to refund any consideration paid by the Lessor prior to such modification, cancellation, or abrogation, including, but not limited to, bonuses, rentals and royalties.

NOTE: The State of Louisiana does hereby reserve, and this lease shall be subject to, the imprescriptible right of surface use in the nature of a servitude in favor of the Department of Natural Resources, including its Offices and Commissions, for the sole purpose of implementing, constructing, servicing and maintaining approved coastal zone management and/or restoration projects. Utilization of any and all rights derived under this lease by the mineral lessee, its agents, successors or assigns, shall not interfere with nor hinder the reasonable surface use by the Department of Natural Resources, its Offices or Commissions, as herein above reserved.

NOTE: The Department of Wildlife and Fisheries has designated certain areas in the coastal waters of the State of Louisiana as Oyster Seed Bed Areas. The exact location of those Seed Bed Areas must be obtained from the Department of Wildlife and Fisheries and any work done under a mineral lease from the State of Louisiana may necessarily be conducted in conformity with the rules and regulations promulgated by the said Department of Wildlife and Fisheries for Oyster Seed Bed Areas.

Applicant: Kare-Sue Energy, Inc.

Bidder	Cash Payment	Price/ Acre	Rental	Oil	Gas	Other



Office of Mineral Resources, Acres: 1589 Tract Number: 35774

NOVEMBER 2003

TRACT 35775 - St. Bernard Parish, Louisiana

All of the lands now or formerly constituting the beds and bottoms of all water bodies of every nature and description the title of which vests in the State of Louisiana, together with all islands arising therein and other lands formed by accretion or by reliction, where allowed by law, excepting tax adjudicated lands, and not presently under mineral lease on November 12, 2003, situated in St. Bernard Parish, Louisiana, and more particularly described as follows: Beginning at a point having Coordinates of X = 2,614,516.00 and Y = 479,869.00; thence West 10,395.00 feet to a point having Coordinates of X = 2,604,121.00 and Y = 479,869.00; thence North 5,589.00 feet to a point having Coordinates of X = 2,604,121.00 and Y = 485,458.00; thence East 10,395.00 feet to a point having Coordinates of X = 2,614,516.00 and Y = 485,458.00; thence South 5,589.00 feet to the point of beginning, containing approximately **1,334 acres**, all as more particularly outlined on a plat on file in the Office of Mineral Resources, Department of Natural Resources. All bearings, distances and coordinates are based on Louisiana Coordinate System of 1927, (North or South Zone), where applicable.

NOTE: The Office of Mineral Resources will require a minimum bonus of \$230 per acre and a minimum royalty of 23%.

NOTE: The above description of the Tract nominated for lease has been provided and corrected, where required, exclusively by the nomination party. Any mineral lease selected from this Tract and awarded by the Louisiana State Mineral Board shall be without warranty of any kind, either express, implied, or statutory, including, but not limited to, the implied warranties of merchantability and fitness for a particular purpose. Should the mineral lease awarded by the Louisiana State Mineral Board be subsequently modified, cancelled or abrogated due to the existence of conflicting leases, operating agreements, private claims or other future obligations or conditions which may affect all or any portion of the leased Tract, it shall not relieve the Lessee of the obligation to pay any bonus due thereon to the Louisiana State Mineral Board, nor shall the Louisiana State Mineral Board be obligated to refund any consideration paid by the Lessor prior to such modification, cancellation, or abrogation, including, but not limited to, bonuses, rentals and royalties.

NOTE: The State of Louisiana does hereby reserve, and this lease shall be subject to, the imprescriptible right of surface use in the nature of a servitude in favor of the Department of Natural Resources, including its Offices and Commissions, for the sole purpose of implementing, constructing, servicing and maintaining approved coastal zone management and/or restoration projects. Utilization of any and all rights derived under this lease by the mineral lessee, its agents, successors or assigns, shall not interfere with nor hinder the reasonable surface use by the Department of Natural Resources, its Offices or Commissions, as herein above reserved.

NOTE: The Department of Wildlife and Fisheries has designated certain areas in the coastal waters of the State of Louisiana as Oyster Seed Bed Areas. The exact location of those Seed Bed Areas must be obtained from the Department of Wildlife and Fisheries and any work done under a mineral lease from the State of Louisiana may necessarily be conducted in conformity with the rules and regulations promulgated by the said Department of Wildlife and Fisheries for Oyster Seed Bed Areas.

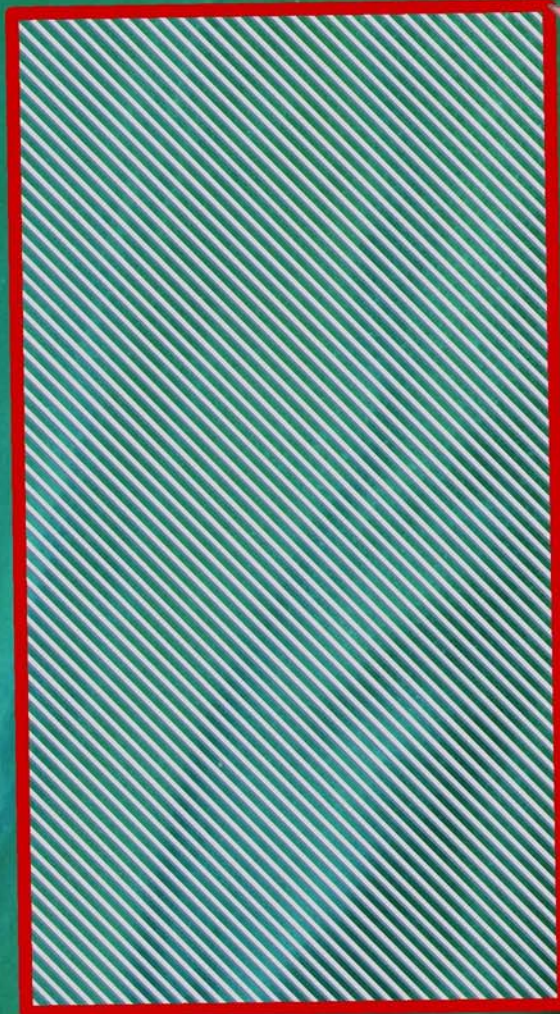
Applicant: Kare-Sue Energy, Inc.

Bidder	Cash Payment	Price/ Acre	Rental	Oil	Gas	Other



BAY BOUDREAU

ST BERNARD PARISH



P.O.B.
X=2,614,516.00
Y=479,869.00

T12S - R18E



TRACT 35776 - Portion of Blocks 46, and 47, Chandeleur Sound Area Add, Revised, St. Bernard Parish, Louisiana

All of the lands now or formerly constituting the beds and bottoms of all water bodies of every nature and description the title of which vests in the State of Louisiana, together with all islands arising therein and other lands formed by accretion or by reliction, where allowed by law, excepting tax adjudicated lands, and not presently under mineral lease on November 12, 2003, situated in St. Bernard Parish, Louisiana, and more particularly described as follows: Beginning at a point within Block 47, Chandeleur Sound Area Addition, Revised having Coordinates of X = 2,630,274.00 and Y = 479,869.00; thence West 15,758.00 feet to a point having Coordinates of X = 2,614,516.00 and Y = 479,869.00; thence North 5,589.00 feet to a point having Coordinates of X = 2,614,516.00 and Y = 485,458.00; thence East 15,758.00 feet to a point within Block 46, Chandeleur Sound Area Addition, Revised having Coordinates of X = 2,630,274.00 and Y = 485,458.00; thence South 5,589.00 feet to the point of beginning, containing approximately **1,812 acres**, all as more particularly outlined on a plat on file in the Office of Mineral Resources, Department of Natural Resources. All bearings, distances and coordinates are based on Louisiana Coordinate System of 1927, (North or South Zone), where applicable.

NOTE: The Office of Mineral Resources will require a minimum bonus of \$230 per acre and a minimum royalty of 23%.

NOTE: The above description of the Tract nominated for lease has been provided and corrected, where required, exclusively by the nomination party. Any mineral lease selected from this Tract and awarded by the Louisiana State Mineral Board shall be without warranty of any kind, either express, implied, or statutory, including, but not limited to, the implied warranties of merchantability and fitness for a particular purpose. Should the mineral lease awarded by the Louisiana State Mineral Board be subsequently modified, cancelled or abrogated due to the existence of conflicting leases, operating agreements, private claims or other future obligations or conditions which may affect all or any portion of the leased Tract, it shall not relieve the Lessee of the obligation to pay any bonus due thereon to the Louisiana State Mineral Board, nor shall the Louisiana State Mineral Board be obligated to refund any consideration paid by the Lessor prior to such modification, cancellation, or abrogation, including, but not limited to, bonuses, rentals and royalties.

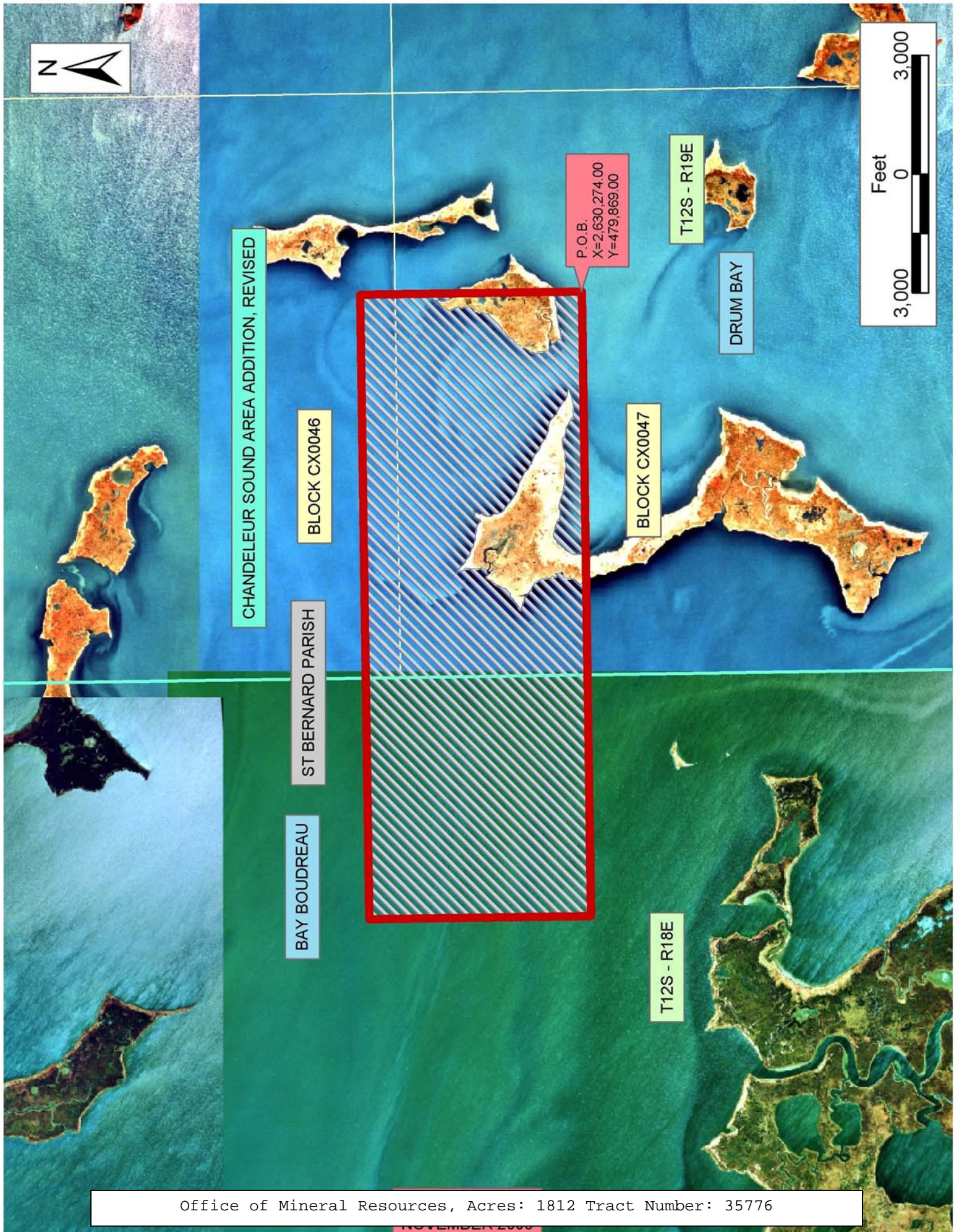
NOTE: The State of Louisiana does hereby reserve, and this lease shall be subject to, the imprescriptible right of surface use in the nature of a servitude in favor of the Department of Natural Resources, including its Offices and Commissions, for the sole purpose of implementing, constructing, servicing and maintaining approved coastal zone management and/or restoration projects. Utilization of any and all rights derived under this lease by the mineral lessee, its agents, successors or assigns, shall not interfere with nor hinder the reasonable surface use by the

Department of Natural Resources, its Offices or Commissions, as herein above reserved.

NOTE: The Department of Wildlife and Fisheries has designated certain areas in the coastal waters of the State of Louisiana as Oyster Seed Bed Areas. The exact location of those Seed Bed Areas must be obtained from the Department of Wildlife and Fisheries and any work done under a mineral lease from the State of Louisiana may necessarily be conducted in conformity with the rules and regulations promulgated by the said Department of Wildlife and Fisheries for Oyster Seed Bed Areas.

Applicant: Kare-Sue Energy, Inc.

Bidder	Cash Payment	Price/ Acre	Rental	Oil	Gas	Other



TRACT 35777 - Assumption and Iberia Parishes, Louisiana

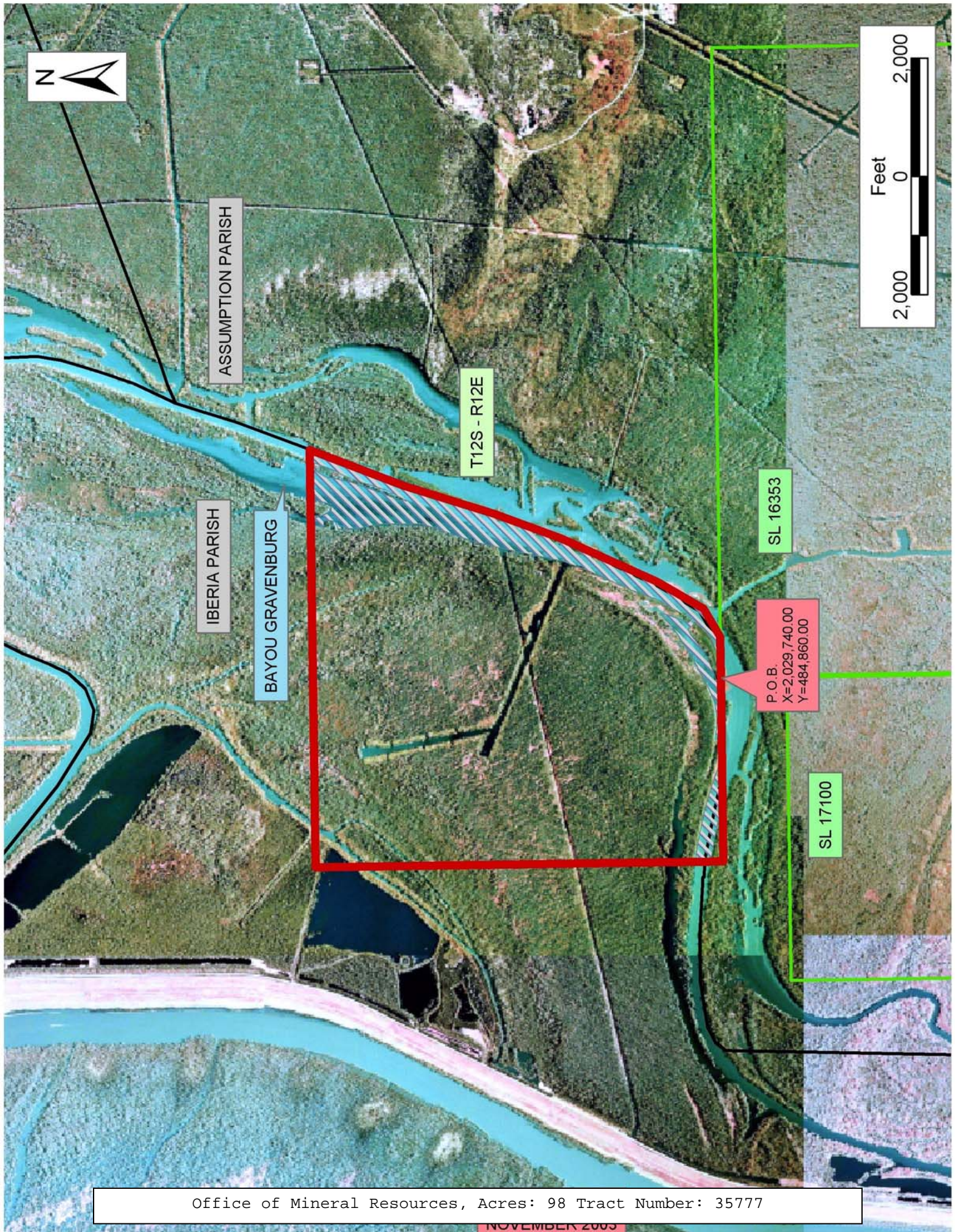
All of the lands now or formerly constituting the beds and bottoms of all water bodies of every nature and description the title of which vests in the State of Louisiana, together with all islands arising therein and other lands formed by accretion or by reliction, where allowed by law, excepting tax adjudicated lands, and not presently under mineral lease on November 12, 2003, situated in Assumption and Iberia Parishes, Louisiana, and more particularly described as follows: Beginning at the Northwest corner of State Lease No. 16353 having Coordinates of X = 2,029,740.00 and Y = 484,860.00; thence West 3,100.00 feet to a point having Coordinates of X = 2,026,640.00 and Y = 484,860.00; thence North 6,900.00 feet to a point having Coordinates of X = 2,026,640.00 and Y = 491,760.00; thence East 7,060.00 feet to a point having Coordinates of 2,033,700.00 and Y = 491,760.00; thence South 21 degrees 48 minutes 05 seconds West 1,700.00 feet to a point having Coordinates of X = 2,033,068.64 and Y = 490,181.59; thence South 18 degrees 00 minutes 00 seconds West 1,600.00 feet to a point having Coordinates of X = 2,032,574.21 and Y = 488,659.90; thence South 21 degrees 00 minutes 00 seconds West 1,200.00 feet to a point having Coordinates of X = 2,032,144.17 and Y = 487,539.60; thence South 25 degrees 00 minutes 00 seconds West 1,800.00 feet to a point having Coordinates of X = 2,031,383.45 and Y = 485,908.25; thence South 31 degrees 00 minutes 00 seconds West 900.00 feet to a point having Coordinates of X = 2,030,919.92 and Y = 485,136.80; thence South 60 degrees 00 minutes 00 seconds West 553.60 feet to a point on the North line of said State Lease No. 16353 having Coordinates of X = 2,030,440.49 and Y = 484,860.00; thence West 700.49 feet on the North line of said State Lease No. 16353 to the point of beginning containing approximately **98 acres**, all as more particularly outlined on a plat on file in the Office of Mineral Resources, Department of Natural Resources. All bearings, distances and coordinates are based on Louisiana Coordinate System of 1927, (North or South Zone), where applicable.

NOTE: The above description of the Tract nominated for lease has been provided and corrected, where required, exclusively by the nomination party. Any mineral lease selected from this Tract and awarded by the Louisiana State Mineral Board shall be without warranty of any kind, either express, implied, or statutory, including, but not limited to, the implied warranties of merchantability and fitness for a particular purpose. Should the mineral lease awarded by the Louisiana State Mineral Board be subsequently modified, cancelled or abrogated due to the existence of conflicting leases, operating agreements, private claims or other future obligations or conditions which may affect all or any portion of the leased Tract, it shall not relieve the Lessee of the obligation to pay any bonus due thereon to the Louisiana State Mineral Board, nor shall the Louisiana State Mineral Board be obligated to refund any consideration paid by the Lessor prior to such modification, cancellation, or abrogation, including, but not limited to, bonuses, rentals and royalties.

NOTE: The State of Louisiana does hereby reserve, and this lease shall be subject to, the imprescriptible right of surface use in the nature of a servitude in favor of the Department of Natural Resources, including its Offices and Commissions, for the sole purpose of implementing, constructing, servicing and maintaining approved coastal zone management and/or restoration projects. Utilization of any and all rights derived under this lease by the mineral lessee, its agents, successors or assigns, shall not interfere with nor hinder the reasonable surface use by the Department of Natural Resources, its Offices or Commissions, as herein above reserved.

Applicant: Theophilus Oil Gas & Land Services, LLC

Bidder	Cash Payment	Price/ Acre	Rental	Oil	Gas	Other



TRACT 35778 - St. Bernard Parish, Louisiana

All of the lands now or formerly constituting the beds and bottoms of all water bodies of every nature and description the title of which vests in the State of Louisiana, together with all islands arising therein and other lands formed by accretion or by reliction, where allowed by law, excepting tax adjudicated lands, and not presently under mineral lease on November 12, 2003, situated in St. Bernard Parish, Louisiana, and more particularly described as follows: Beginning at a point on the boundary of the Biloxi Wildlife Management Area having Coordinates of X = 2,583,678.60 and Y = 469,476.73; thence along the boundary of said Biloxi Wildlife Management Area the following courses and distances: North 01 degrees 55 minutes 06 seconds West 727.39 feet, North 00 degrees 55 minutes 13 seconds West 127.27 feet, North 01 degrees 46 minutes 24 seconds West 1,276.52 feet, North 02 degrees 18 minutes 22 seconds West 130.95 feet, North 01 degrees 42 minutes 48 seconds West 2,974.86 feet, North 01 degrees 49 minutes 30 seconds West 1,346.53 feet, North 01 degrees 47 minutes 12 seconds West 1,346.54 feet, South 88 degrees 12 minutes 33 seconds West 1,263.95 feet, South 88 degrees 10 minutes 18 seconds West 1,264.41 feet, North 01 degrees 46 minutes 00 seconds West 1,333.49 feet, North 01 degrees 46 minutes 00 seconds West 1,333.49 feet, North 87 degrees 35 minutes 56 seconds East 2,527.57 feet, North 88 degrees 52 minutes 39 seconds East 1,318.00 feet, North 88 degrees 52 minutes 39 seconds East 1,317.99 feet, North 88 degrees 52 minutes 39 seconds East 1,317.99 feet, North 88 degrees 52 minutes 39 seconds East 1,317.98 feet, North 87 degrees 30 minutes 16 seconds East 133.04 feet, North 88 degrees 51 minutes 50 seconds East 5,138.98 feet, South 02 degrees 31 minutes 05 seconds East 1,262.32 feet, South 02 degrees 27 minutes 15 seconds East 956.71 feet, South 02 degrees 31 minutes 00 seconds East 2,182.67 feet, South 02 degrees 30 minutes 44 seconds East 1,036.77 feet, South 89 degrees 03 minutes 45 seconds West 221.68 feet, South 88 degrees 38 minutes 15 seconds West 978.57 feet, South 88 degrees 28 minutes 18 seconds West 351.53 feet, South 88 degrees 40 minutes 46 seconds West 2,688.68 feet, South 88 degrees 40 minutes 03 seconds West 1,035.57 feet, South 01 degrees 48 minutes 42 seconds East 410.96 feet, South 01 degrees 49 minutes 50 seconds East 1,207.44 feet and South 01 degrees 56 minutes 27 seconds East 3,586.05 feet to a point on the boundary of said Biloxi Wildlife Management Area having Coordinates of X = 2,589,027.63 and Y = 469,548.58; thence South 89 degrees 13 minutes 50 seconds West 5,349.52 feet to the point of beginning, **LESS AND EXCEPT** any portion of the Biloxi Wildlife Management Area that may lie within the above described tract, containing approximately **576 acres**, all as more particularly outlined on a plat on file in the Office of Mineral Resources, Department of Natural Resources. All bearings, distances and coordinates are based on Louisiana Coordinate System of 1927, (North or South Zone), where applicable.

NOTE: The Office of Mineral Resources will require a minimum bonus of \$230 per acre and a minimum royalty of 23%.

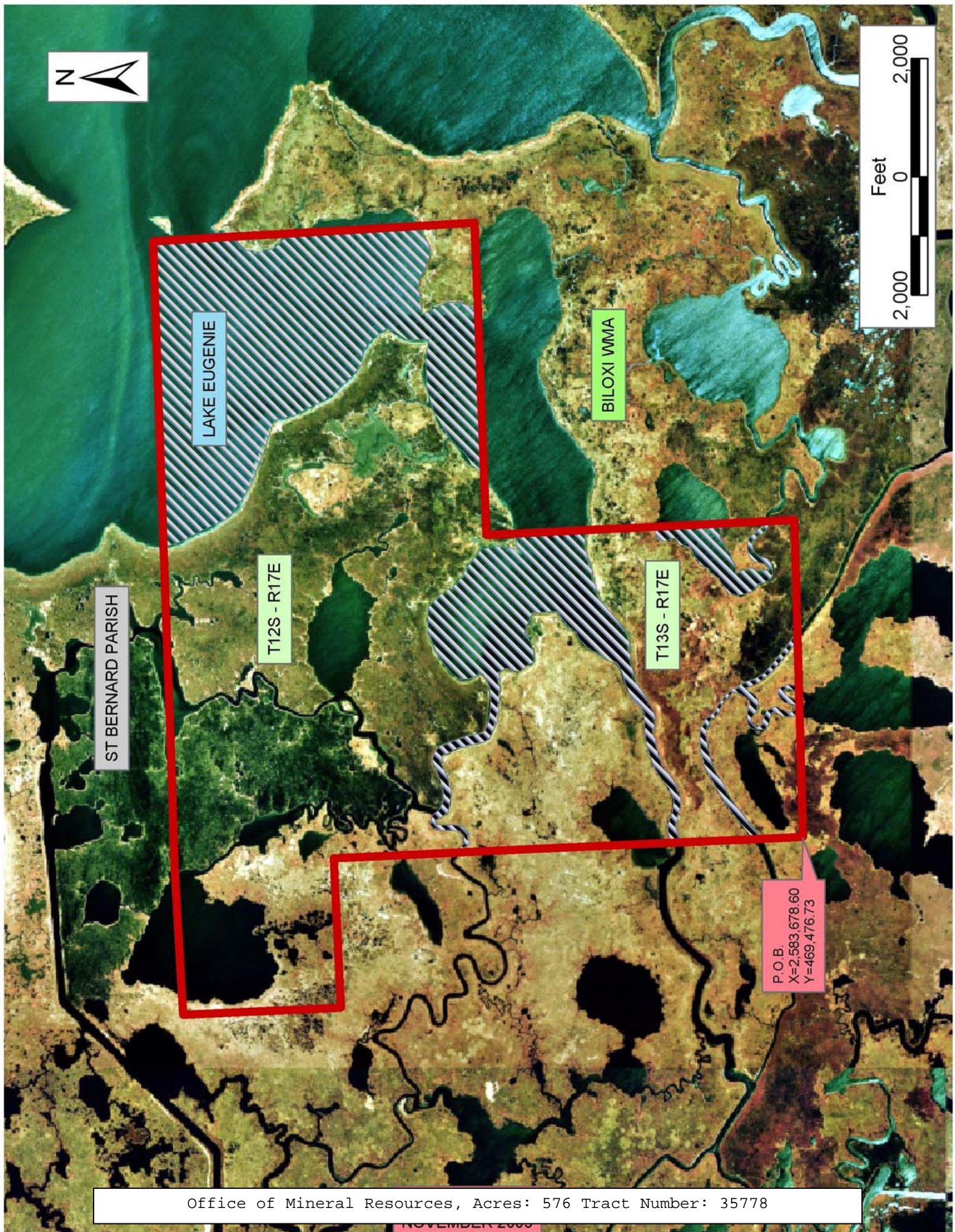
NOTE: The above description of the Tract nominated for lease has been provided and corrected, where required, exclusively by the nomination party. Any mineral lease selected from this Tract and awarded by the Louisiana State Mineral Board shall be without warranty of any kind, either express, implied, or statutory, including, but not limited to, the implied warranties of merchantability and fitness for a particular purpose. Should the mineral lease awarded by the Louisiana State Mineral Board be subsequently modified, cancelled or abrogated due to the existence of conflicting leases, operating agreements, private claims or other future obligations or conditions which may affect all or any portion of the leased Tract, it shall not relieve the Lessee of the obligation to pay any bonus due thereon to the Louisiana State Mineral Board, nor shall the Louisiana State Mineral Board be obligated to refund any consideration paid by the Lessor prior to such modification, cancellation, or abrogation, including, but not limited to, bonuses, rentals and royalties.

NOTE: The State of Louisiana does hereby reserve, and this lease shall be subject to, the imprescriptible right of surface use in the nature of a servitude in favor of the Department of Natural Resources, including its Offices and Commissions, for the sole purpose of implementing, constructing, servicing and maintaining approved coastal zone management and/or restoration projects. Utilization of any and all rights derived under this lease by the mineral lessee, its agents, successors or assigns, shall not interfere with nor hinder the reasonable surface use by the Department of Natural Resources, its Offices or Commissions, as herein above reserved.

NOTE: The Department of Wildlife and Fisheries has designated certain areas in the coastal waters of the State of Louisiana as Oyster Seed Bed Areas. The exact location of those Seed Bed Areas must be obtained from the Department of Wildlife and Fisheries and any work done under a mineral lease from the State of Louisiana may necessarily be conducted in conformity with the rules and regulations promulgated by the said Department of Wildlife and Fisheries for Oyster Seed Bed Areas.

Applicant: Kare-Sue Energy, Inc.

Bidder	Cash Payment	Price/ Acre	Rental	Oil	Gas	Other



ST BERNARD PARISH

LAKE EUGENIE

T12S - R17E

BILOXI WMA

T13S - R17E

P.O.B.
X=2,583,678.60
Y=469,476.73

TRACT 35779 - St. Bernard Parish, Louisiana

All of the lands now or formerly constituting the beds and bottoms of all water bodies of every nature and description the title of which vests in the State of Louisiana, together with all islands arising therein and other lands formed by accretion or by reliction, where allowed by law, excepting tax adjudicated lands, and not presently under mineral lease on November 12, 2003, situated in St. Bernard Parish, Louisiana, and more particularly described as follows: Beginning at a point having Coordinates of X = 2,614,516.00 and Y = 479,869.00; thence South 11,178.00 feet to a point having Coordinates of X = 2,614,516.00 and Y = 468,691.00; thence West 14,551.17 feet to a point on the East boundary line of the Biloxi Wildlife Management Area having Coordinates of X = 2,599,964.83 and Y = 468,691.00; thence along the boundary of said Biloxi Wildlife Management Area the following courses and distances: North 01 degrees 25 minutes 01 seconds East 1,132.04 feet, North 03 degrees 29 minutes 43 seconds West 5,197.92 feet, North 01 degrees 49 minutes 58 seconds West 818.29 feet and North 01 degrees 45 minutes 04 seconds West 4,042.06 feet to a point on the East line of said Biloxi Wildlife Management Area having Coordinates of X = 2,599,526.23 and Y = 479,869.00; thence East 14,989.77 feet to the point of beginning, **LESS AND EXCEPT** any portion of the Biloxi Wildlife Management Area that may lie within the above described tract, containing approximately **1,905 acres**, all as more particularly outlined on a plat on file in the Office of Mineral Resources, Department of Natural Resources. All bearings, distances and coordinates are based on Louisiana Coordinate System of 1927, (North or South Zone), where applicable.

NOTE: The Office of Mineral Resources will require a minimum bonus of \$230 per acre and a minimum royalty of 23%.

NOTE: The above description of the Tract nominated for lease has been provided and corrected, where required, exclusively by the nomination party. Any mineral lease selected from this Tract and awarded by the Louisiana State Mineral Board shall be without warranty of any kind, either express, implied, or statutory, including, but not limited to, the implied warranties of merchantability and fitness for a particular purpose. Should the mineral lease awarded by the Louisiana State Mineral Board be subsequently modified, cancelled or abrogated due to the existence of conflicting leases, operating agreements, private claims or other future obligations or conditions which may affect all or any portion of the leased Tract, it shall not relieve the Lessee of the obligation to pay any bonus due thereon to the Louisiana State Mineral Board, nor shall the Louisiana State Mineral Board be obligated to refund any consideration paid by the Lessor prior to such modification, cancellation, or abrogation, including, but not limited to, bonuses, rentals and royalties.

NOTE: The State of Louisiana does hereby reserve, and this lease shall be subject to, the imprescriptible right of surface use in the nature of a servitude in favor of the Department of Natural Resources, including its Offices and Commissions, for the sole purpose of implementing,

constructing, servicing and maintaining approved coastal zone management and/or restoration projects. Utilization of any and all rights derived under this lease by the mineral lessee, its agents, successors or assigns, shall not interfere with nor hinder the reasonable surface use by the Department of Natural Resources, its Offices or Commissions, as herein above reserved.

NOTE: The Department of Wildlife and Fisheries has designated certain areas in the coastal waters of the State of Louisiana as Oyster Seed Bed Areas. The exact location of those Seed Bed Areas must be obtained from the Department of Wildlife and Fisheries and any work done under a mineral lease from the State of Louisiana may necessarily be conducted in conformity with the rules and regulations promulgated by the said Department of Wildlife and Fisheries for Oyster Seed Bed Areas.

Applicant: Kare-Sue Energy, Inc.

Bidder	Cash Payment	Price/ Acre	Rental	Oil	Gas	Other

