

TRACT 35066 - Portion of Block 5, Chandeleur Sound Area, St. Bernard Parish, Louisiana

All of the lands now or formerly constituting the beds and bottoms of all water bodies of every nature and description, and all islands and other lands formed by accretion, where allowed by law, or by reliction, and excepting tax adjudicated lands, belonging to the State of Louisiana and not presently under mineral lease on November 13, 2002, situated in St. Bernard Parish, Louisiana, and more particularly described as follows: Beginning at a point being the Northeast corner of Block 5, Chandeleur Sound Area, having Coordinates of X = 2,694,350.00 and Y = 469,830.00; thence South 7,375.00 feet to a point having Coordinates of X = 2,694,350.00 and Y = 462,455.00; thence West 14,750.00 feet to a point having Coordinates of X = 2,679,600.00 and Y = 462,455.00; thence North 7,375.00 feet to the Northwest corner of Block 5 having Coordinates of X = 2,679,600.00 and Y = 469,830.00; thence East 14,750.00 feet to the point of beginning, containing approximately **2,497.27 acres**, all as more particularly outlined on a plat on file in the Office of Mineral Resources, Department of Natural Resources, as provided by the applicant. All bearings, distances and coordinates are based on Louisiana Coordinate System of 1927, (North or South Zone), where applicable.

NOTE: The above description of the Tract nominated for lease has been provided and corrected, where required, exclusively by the nomination party. Any mineral lease selected from this Tract and awarded by the Louisiana State Mineral Board shall be without warranty of any kind, either express, implied, or statutory, including, but not limited to, the implied warranties of merchantability and fitness for a particular purpose. Should the mineral lease awarded by the Louisiana State Mineral Board be subsequently modified, cancelled or abrogated due to the existence of conflicting leases, operating agreements, private claims or other future obligations or conditions which may affect all or any portion of the leased Tract, it shall not relieve the Lessee of the obligation to pay any bonus due thereon to the Louisiana State Mineral Board, nor shall the Louisiana State Mineral Board be obligated to refund any consideration paid by the Lessor prior to such modification, cancellation, or abrogation, including, but not limited to, bonuses, rentals and royalties.

NOTE: The Office of Mineral Resources will require a minimum bonus of \$130 per acre and a minimum royalty of 21%.

NOTE: The Department of Wildlife and Fisheries has designated certain areas in the coastal waters of the State of Louisiana as Oyster Seed Bed Areas. The exact location of those Seed Bed Areas must be obtained from the Department of Wildlife and Fisheries and any work done under a mineral lease from the State of Louisiana may necessarily be conducted in conformity with the rules and regulations promulgated by the said Department of Wildlife and Fisheries for Oyster Seed Bed Areas.

NOTE: The State of Louisiana does hereby reserve, and this lease shall be subject to, the imprescriptible right of surface use in the nature of a servitude in favor of the Department of Natural Resources, including its Offices and Commissions, for the sole purpose of implementing, constructing, servicing and maintaining approved coastal zone management and/or restoration projects. Utilization of any and all rights derived under this lease by the mineral lessee, its agents, successors or assigns, shall not interfere with nor hinder the reasonable surface use by the Department of Natural Resources, its Offices or Commissions, as herein above reserved.

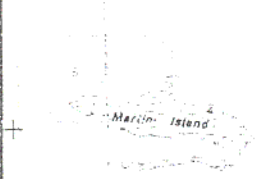
Applicant: Crawford Energy

Bidder	Cash Payment	Price / Acre	Rental	Oil	Gas	Other

S
O
U
N
D

00051

OXO



P.O.B.

X=2,694,350.00

Y= 469,830.00

X = 2,679,600.00

Y = 469,830.00

X = 2,694,350.00

Y = 469,830.00

TR 35066
2,497.27 ± ACS.
NOV., 2002

N
D

004

030005

CS

BLOCK 5

X = 2,679,600.00

Y = 455,080.00

X = 2,694,350.00

Y = 455,080.00



CHANDELEUR SOUND AREA
ST. BERNARD PARISH, LOUISIANA

SCALE: 1" = 4000'

TRACT 35067 - Portion of Block 5, Chandeleur Sound Area, St. Bernard Parish, Louisiana

All of the lands now or formerly constituting the beds and bottoms of all water bodies of every nature and description, and all islands and other lands formed by accretion, where allowed by law, or by reliction, and excepting tax adjudicated lands, belonging to the State of Louisiana and not presently under mineral lease on November 13, 2002, situated in St. Bernard Parish, Louisiana, and more particularly described as follows: Beginning at a point being the Southeast corner of Block 5, Chandeleur Sound Area, having Coordinates of X = 2,694,350.00 and Y = 455,080.00; thence West 14,750.00 feet to the Southwest corner of Block 5 to a point having Coordinates of X = 2,679,600.00 and Y = 455,080.00; thence North 7,375.00 feet to a point having Coordinates of X = 2,679,600.00 and Y = 462,455.00; thence East 14,750.00 feet to a point having Coordinates of X = 2,694,350.00 and Y = 462,455.00; thence South 7,375.00 feet to the point of beginning, containing approximately **2,497.27 acres**, all as more particularly outlined on a plat on file in the Office of Mineral Resources, Department of Natural Resources, as provided by the applicant. All bearings, distances and coordinates are based on Louisiana Coordinate System of 1927, (North or South Zone), where applicable.

NOTE: The above description of the Tract nominated for lease has been provided and corrected, where required, exclusively by the nomination party. Any mineral lease selected from this Tract and awarded by the Louisiana State Mineral Board shall be without warranty of any kind, either express, implied, or statutory, including, but not limited to, the implied warranties of merchantability and fitness for a particular purpose. Should the mineral lease awarded by the Louisiana State Mineral Board be subsequently modified, cancelled or abrogated due to the existence of conflicting leases, operating agreements, private claims or other future obligations or conditions which may affect all or any portion of the leased Tract, it shall not relieve the Lessee of the obligation to pay any bonus due thereon to the Louisiana State Mineral Board, nor shall the Louisiana State Mineral Board be obligated to refund any consideration paid by the Lessor prior to such modification, cancellation, or abrogation, including, but not limited to, bonuses, rentals and royalties.

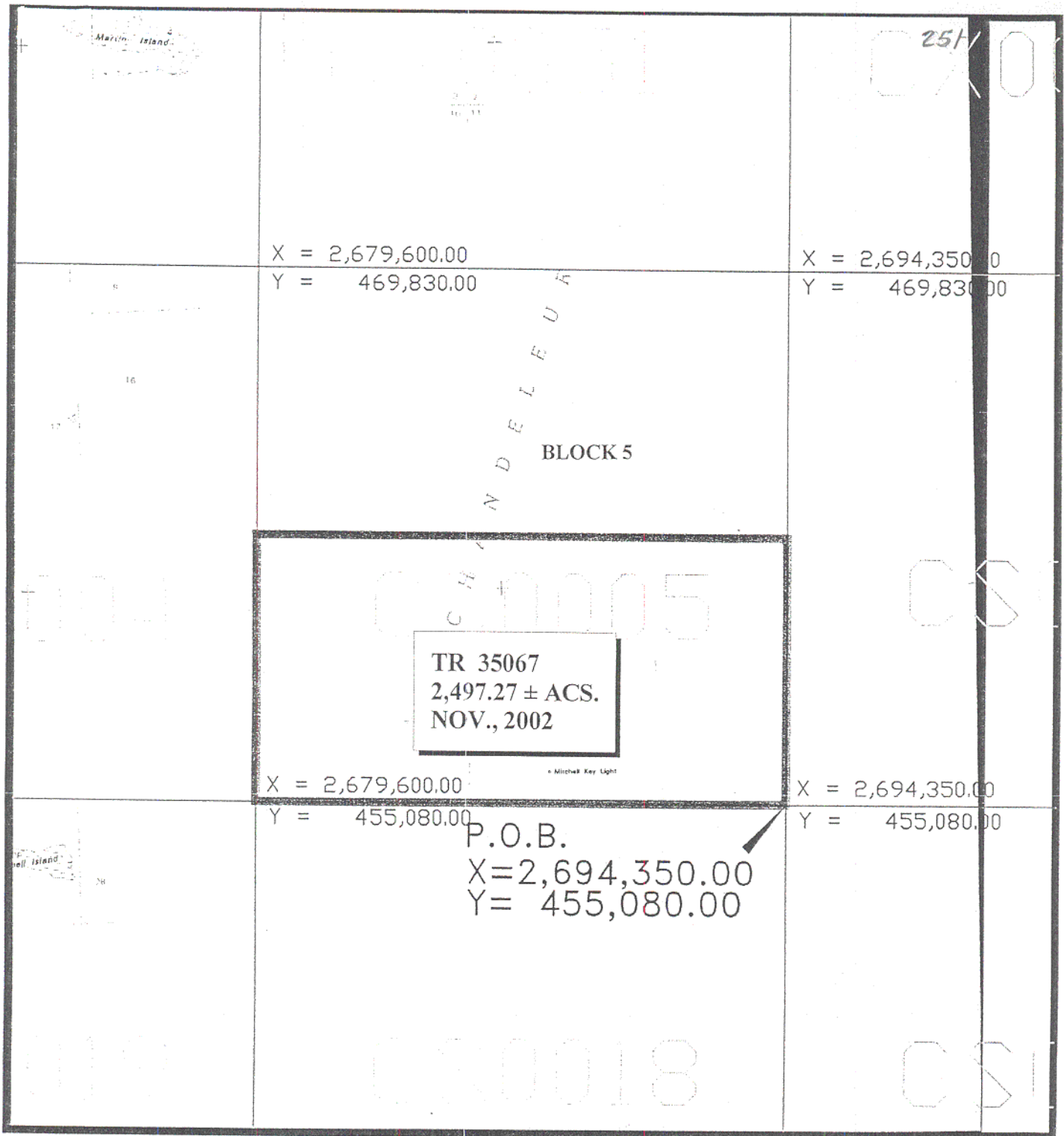
NOTE: The Office of Mineral Resources will require a minimum bonus of \$130 per acre and a minimum royalty of 21%.

NOTE: The Department of Wildlife and Fisheries has designated certain areas in the coastal waters of the State of Louisiana as Oyster Seed Bed Areas. The exact location of those Seed Bed Areas must be obtained from the Department of Wildlife and Fisheries and any work done under a mineral lease from the State of Louisiana may necessarily be conducted in conformity with the rules and regulations promulgated by the said Department of Wildlife and Fisheries for Oyster Seed Bed Areas.

NOTE: The State of Louisiana does hereby reserve, and this lease shall be subject to, the imprescriptible right of surface use in the nature of a servitude in favor of the Department of Natural Resources, including its Offices and Commissions, for the sole purpose of implementing, constructing, servicing and maintaining approved coastal zone management and/or restoration projects. Utilization of any and all rights derived under this lease by the mineral lessee, its agents, successors or assigns, shall not interfere with nor hinder the reasonable surface use by the Department of Natural Resources, its Offices or Commissions, as herein above reserved.

Applicant: Crawford Energy

Bidder	Cash Payment	Price / Acre	Rental	Oil	Gas	Other



CHANDELEUR SOUND AREA
ST. BERNARD PARISH, LOUISIANA

SCALE: 1" = 4000'

TRACT 35068 - Portion of Block 18, Chandeleur Sound Area, St. Bernard Parish, Louisiana

All of the lands now or formerly constituting the beds and bottoms of all water bodies of every nature and description, and all islands and other lands formed by accretion, where allowed by law, or by reliction, and excepting tax adjudicated lands, belonging to the State of Louisiana and not presently under mineral lease on November 13, 2002, situated in St. Bernard Parish, Louisiana, and more particularly described as follows: Beginning at the Northeast corner of Block 18, Chandeleur Sound Area, having Coordinates of X = 2,694,350.00 and Y = 455,080.00; thence South 7,375.00 feet to a point having Coordinates of X = 2,694,350.00 and Y = 447,705.00; thence West 14,750.00 feet to a point having Coordinates of X = 2,679,600.00 and Y = 447,705.00; thence North 7,375.00 feet to the Northwest corner of Block 18, having Coordinates of X = 2,679,600.00 and Y = 455,080.00; thence East 14,750.00 feet to the point of beginning, containing approximately **2,497.27 acres**, all as more particularly outlined on a plat on file in the Office of Mineral Resources, Department of Natural Resources, as provided by the applicant. All bearings, distances and coordinates are based on Louisiana Coordinate System of 1927, (North or South Zone), where applicable.

NOTE: The above description of the Tract nominated for lease has been provided and corrected, where required, exclusively by the nomination party. Any mineral lease selected from this Tract and awarded by the Louisiana State Mineral Board shall be without warranty of any kind, either express, implied, or statutory, including, but not limited to, the implied warranties of merchantability and fitness for a particular purpose. Should the mineral lease awarded by the Louisiana State Mineral Board be subsequently modified, cancelled or abrogated due to the existence of conflicting leases, operating agreements, private claims or other future obligations or conditions which may affect all or any portion of the leased Tract, it shall not relieve the Lessee of the obligation to pay any bonus due thereon to the Louisiana State Mineral Board, nor shall the Louisiana State Mineral Board be obligated to refund any consideration paid by the Lessor prior to such modification, cancellation, or abrogation, including, but not limited to, bonuses, rentals and royalties.

NOTE: The Office of Mineral Resources will require a minimum bonus of \$230 per acre and a minimum royalty of 23%.

NOTE: The Department of Wildlife and Fisheries has designated certain areas in the coastal waters of the State of Louisiana as Oyster Seed Bed Areas. The exact location of those Seed Bed Areas must be obtained from the Department of Wildlife and Fisheries and any work done under a mineral lease from the State of Louisiana may necessarily be conducted in conformity with the rules and regulations promulgated by the said Department of Wildlife and Fisheries for Oyster Seed Bed Areas.

NOTE: The State of Louisiana does hereby reserve, and this lease shall be subject to, the imprescriptible right of surface use in the nature of a servitude in favor of the Department of Natural Resources, including its Offices and Commissions, for the sole purpose of implementing, constructing, servicing and maintaining approved coastal zone management and/or restoration projects. Utilization of any and all rights derived under this lease by the mineral lessee, its agents, successors or assigns, shall not interfere with nor hinder the reasonable surface use by the Department of Natural Resources, its Offices or Commissions, as herein above reserved.

Applicant: Crawford Energy

Bidder	Cash Payment	Price / Acre	Rental	Oil	Gas	Other

254

C H A N D E L E U R

004

CS0005

CS0

P.O.B.²⁵

X = 2,694,350.00

Y = 455,080.00

X = 2,679,600.00

Y = 455,080.00

X = 2,694,350.00

Y = 455,080.00

TR 35068
2,497.27 ± ACS.
NOV., 2002

019

CS0018

CS0

X = 2,679,600.00

Y = 440,330.00

X = 2,694,350.00

Y = 440,330.00

SL 17394



CHANDELEUR SOUND AREA
ST. BERNARD PARISH, LOUISIANA

SCALE: 1" = 4000'

TRACT 35069 - Portion of Block 13, Chandeleur Sound Area, St. Bernard Parish, Louisiana

All of the lands now or formerly constituting the beds and bottoms of all water bodies of every nature and description, and all islands and other lands formed by accretion, where allowed by law, or by reliction, and excepting tax adjudicated lands, belonging to the State of Louisiana and not presently under mineral lease on November 13, 2002, situated in St. Bernard Parish, Louisiana, and more particularly described as follows: Beginning at a point on the North line of Block 13, Chandeleur Sound Area, having Coordinates of X = 2,760,725.00 and Y = 455,080.00; thence South 14,750.00 feet to a point on the South line of said Block 13 having Coordinates of X = 2,760,725.00 and Y = 440,330.00; thence West 7,375.00 feet along the South line of said Block 13 to its Southwest corner having Coordinates of X = 2,753,350.00 and Y = 440,330.00; thence North 14,750.00 feet along the West line of said Block 13 to its Northwest corner having Coordinates of X = 2,753,350.00 and Y = 455,080.00; thence East 7,375.00 feet along the North line of said Block 13 to the point of beginning, containing approximately **2,497.27 acres**, all as more particularly outlined on a plat on file in the Office of Mineral Resources, Department of Natural Resources, as provided by the applicant. All bearings, distances and coordinates are based on Louisiana Coordinate System of 1927, (North or South Zone), where applicable.

NOTE: The above description of the Tract nominated for lease has been provided and corrected, where required, exclusively by the nomination party. Any mineral lease selected from this Tract and awarded by the Louisiana State Mineral Board shall be without warranty of any kind, either express, implied, or statutory, including, but not limited to, the implied warranties of merchantability and fitness for a particular purpose. Should the mineral lease awarded by the Louisiana State Mineral Board be subsequently modified, cancelled or abrogated due to the existence of conflicting leases, operating agreements, private claims or other future obligations or conditions which may affect all or any portion of the leased Tract, it shall not relieve the Lessee of the obligation to pay any bonus due thereon to the Louisiana State Mineral Board, nor shall the Louisiana State Mineral Board be obligated to refund any consideration paid by the Lessor prior to such modification, cancellation, or abrogation, including, but not limited to, bonuses, rentals and royalties.

NOTE: The Office of Mineral Resources will require a minimum bonus of \$230 per acre and a minimum royalty of 23%.

NOTE: The State of Louisiana does hereby reserve, and this lease shall be subject to, the imprescriptible right of surface use in the nature of a servitude in favor of the Department of Natural Resources, including its Offices and Commissions, for the sole purpose of implementing, constructing, servicing and maintaining approved coastal zone management

and/or restoration projects. Utilization of any and all rights derived under this lease by the mineral lessee, its agents, successors or assigns, shall not interfere with nor hinder the reasonable surface use by the Department of Natural Resources, its Offices or Commissions, as herein above reserved.

Applicant: Crawford Energy

Bidder	Cash Payment	Price / Acre	Rental	Oil	Gas	Other

257

BIK. 11

BIK. 9

BIK. 10

BIK. 14

TR 35069
2,497.27 ± ACS.
NOV., 2002

P. O. B.
X=2,760,725.00
Y= 455,080.00

BIK. 13

BIK. 12

BIK. 31

BIK. 32

BIK. 33

CHANDELEUR SOUND AREA
GULF OF MEXICO

St. Bernard Parish, Louisiana

4000' 0' 4000'

NAD 27
LAMBERT LA. SOUTH ZONE

TRACT 35070 - Portion of Block 13, Chandeleur Sound Area, St. Bernard Parish, Louisiana

All of the lands now or formerly constituting the beds and bottoms of all water bodies of every nature and description, and all islands and other lands formed by accretion, where allowed by law, or by reliction, and excepting tax adjudicated lands, belonging to the State of Louisiana and not presently under mineral lease on November 13, 2002, situated in St. Mary Parish, Louisiana, and more particularly described as follows: Beginning at a point on the North line of Block 13, Chandeleur Sound Area, having Coordinates of X = 2,670,725.00 and Y = 455,080.00; thence East 7,375.00 feet along the North line of said Block 13 to its Northeast corner having Coordinates of X = 2,768,100.00 and Y = 455,080.00; thence South 14,750.00 feet along the East line of said Block 13 to its Southeast corner having Coordinates of X = 2,678,100.00 and Y = 440,330.00; thence West 7,375.00 feet along the South line of said Block 13 to a point having Coordinates of X = 2,670,725.00 and Y = 440,330.00; thence North 14,750.00 feet to the point of beginning, containing approximately **2,497.27 acres**, all as more particularly outlined on a plat on file in the Office of Mineral Resources, Department of Natural Resources, as provided by the applicant. All bearings, distances and coordinates are based on Louisiana Coordinate System of 1927, (North or South Zone), where applicable.

NOTE: The above description of the Tract nominated for lease has been provided and corrected, where required, exclusively by the nomination party. Any mineral lease selected from this Tract and awarded by the Louisiana State Mineral Board shall be without warranty of any kind, either express, implied, or statutory, including, but not limited to, the implied warranties of merchantability and fitness for a particular purpose. Should the mineral lease awarded by the Louisiana State Mineral Board be subsequently modified, cancelled or abrogated due to the existence of conflicting leases, operating agreements, private claims or other future obligations or conditions which may affect all or any portion of the leased Tract, it shall not relieve the Lessee of the obligation to pay any bonus due thereon to the Louisiana State Mineral Board, nor shall the Louisiana State Mineral Board be obligated to refund any consideration paid by the Lessor prior to such modification, cancellation, or abrogation, including, but not limited to, bonuses, rentals and royalties.

NOTE: The Office of Mineral Resources will require a minimum bonus of \$230 per acre and a minimum royalty of 23%.

NOTE: The State of Louisiana does hereby reserve, and this lease shall be subject to, the imprescriptible right of surface use in the nature of a servitude in favor of the Department of Natural Resources, including its Offices and Commissions, for the sole purpose of implementing, constructing, servicing and maintaining approved coastal zone management and/or restoration projects. Utilization of any and all rights derived

under this lease by the mineral lessee, its agents, successors or assigns, shall not interfere with nor hinder the reasonable surface use by the Department of Natural Resources, its Offices or Commissions, as herein above reserved.

Applicant: Crawford Energy

Bidder	Cash Payment	Price / Acre	Rental	Oil	Gas	Other

260

BIK. 11

BIK. 9

BIK. 10

BIK. 14

BIK. 13

P. O. B.
X=2,760,725.00
Y= 455,080.00

TR 35070
2,497.27 ± ACS.
NOV., 2002

BIK. 12

BIK. 31

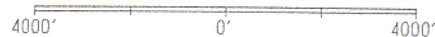
BIK. 32

BIK. 33

CHANDELEUR SOUND AREA
GULF OF MEXICO

NAD 27 LAMBERT LA. SOUTH ZONE

St. Bernard Parish, Louisiana



TRACT 35071 - Portion of Block 71, Chandeleur Sound Area, St. Bernard Parish, Louisiana

All of the lands now or formerly constituting the beds and bottoms of all water bodies of every nature and description, and all islands and other lands formed by accretion, where allowed by law, or by reliction, and excepting tax adjudicated lands, belonging to the State of Louisiana and not presently under mineral lease on November 13, 2002, situated in St. Bernard Parish, Louisiana, and more particularly described as follows: Beginning at a point within Block 11, Chandeleur Sound Area, being the Northwest corner of State Lease No. 17276 having Coordinates of X = 2,616,150.00 and Y = 386,030.00; thence South 29 degrees 03 minutes 17 seconds East 3,088.69 feet along the West boundary of said State Lease No. 17276 to its Southwest corner, said corner also being a point on the North boundary of State Lease No. 16712, having Coordinates of X = 2,617,650.00 and Y = 383,330.00; thence West 3,150.00 feet along the North boundary of said State Lease No. 16712 to its Northwest corner having Coordinates of X = 2,614,500.00 and Y = 383,330.00; thence South 400.56 feet along the West boundary of said State Lease No. 16712 to its Northernmost Southwest corner, said corner is also a point on the Northern boundary of State Lease No. 6618, as amended, having Coordinates of X = 2,614,500.00 and Y = 382,929.44; thence along the said Northern boundary of said State Lease No. 6618 the following courses: South 76 degrees 05 minutes 21 seconds West 641.73 feet to point having Coordinates of X = 2,613,877.09 and Y = 382,775.16, South 70 degrees 26 minutes 28 seconds West 631.71 feet to a point having Coordinates of X = 2,613,281.83 and Y = 382,563.68, South 62 degrees 58 minutes 10 seconds West 1,572.46 feet to a point having Coordinates of X = 2,611,881.14 and Y = 381,849.05, South 56 degrees 54 minutes 48 seconds West 950.81 feet to its Southwest corner, said corner also being a point on the South boundary of said Block 71 having Coordinates of X = 2,611,084.51 and Y = 381,330.00; thence West 1,959.51 feet along the said South boundary of said Block 71 to a point having Coordinates of X = 2,609,125.00 and Y = 381,330.00; thence North 1,200.58 feet to a point having Coordinates of X = 2,609,125.00 and Y = 382,530.58; thence North 63 degrees 31 minutes 13 seconds East 7,848.35 feet to the point of beginning, containing approximately **373.53 acres**, all as more particularly outlined on a plat on file in the Office of Mineral Resources, Department of Natural Resources, as provided by the applicant. All bearings, distances and coordinates are based on Louisiana Coordinate System of 1927, (North or South Zone), where applicable.

NOTE: The above description of the Tract nominated for lease has been provided and corrected, where required, exclusively by the nomination party. Any mineral lease selected from this Tract and awarded by the Louisiana State Mineral Board shall be without warranty of any kind, either express, implied, or statutory, including, but not limited to, the implied warranties of merchantability and fitness for a particular purpose. Should the mineral lease awarded by the Louisiana State Mineral

Board be subsequently modified, cancelled or abrogated due to the existence of conflicting leases, operating agreements, private claims or other future obligations or conditions which may affect all or any portion of the leased Tract, it shall not relieve the Lessee of the obligation to pay any bonus due thereon to the Louisiana State Mineral Board, not shall the Louisiana State Mineral Board be obligated to refund any consideration paid by the Lessor prior to such modification, cancellation, or abrogation, including, but not limited to, bonuses, rentals and royalties.

NOTE: The Department of Wildlife and Fisheries has designated certain areas in the coastal waters of the State of Louisiana as Oyster Seed Bed Areas. The exact location of those Seed Bed Areas must be obtained from the Department of Wildlife and Fisheries and any work done under a mineral lease from the State of Louisiana may necessarily be conducted in conformity with the rules and regulations promulgated by the said Department of Wildlife and Fisheries for Oyster Seed Bed Areas.

NOTE: It appears, according to our records, that a portion of this Tract is located within the restrictive safety fairway area as set out by the Corps of Engineers, U.S. Army and/or the restrictive anchorage area as set out by the U.S. Coast Guard.

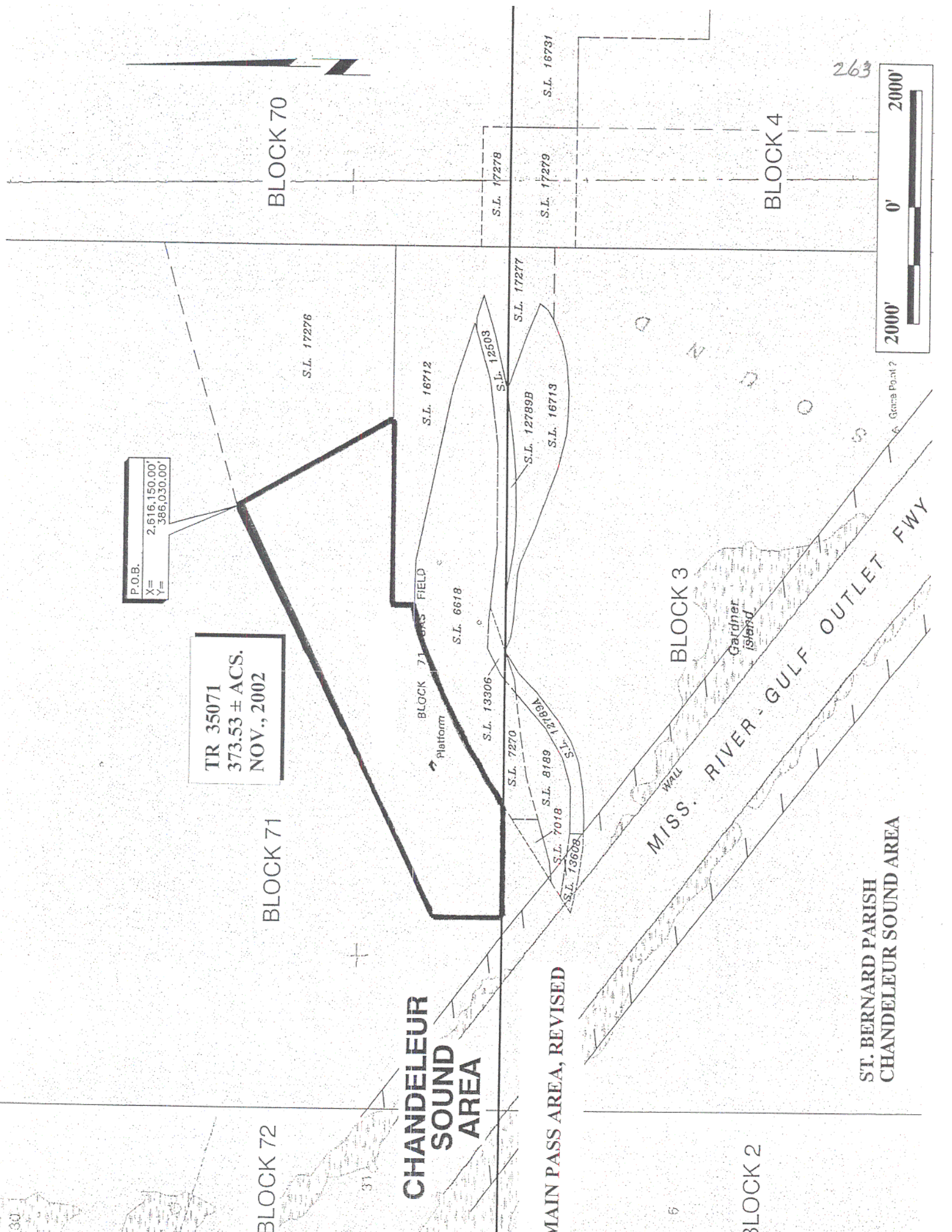
NOTE: The State of Louisiana does hereby reserve, and this lease shall be subject to, the imprescriptible right of surface use in the nature of a servitude in favor of the Department of Natural Resources, including its Offices and Commissions, for the sole purpose of implementing, constructing, servicing and maintaining approved coastal zone management and/or restoration projects. Utilization of any and all rights derived under this lease by the mineral lessee, its agents, successors or assigns, shall not interfere with nor hinder the reasonable surface use by the Department of Natural Resources, its Offices or Commissions, as herein above reserved.

Applicant: Stephen M. Jenkins & Associates

Bidder	Cash Payment	Price / Acre	Rental	Oil	Gas	Other

P.O.B.	
X=	2,616,150.00
Y=	386,030.00

TR 35071
 373.53 ± ACS.
 NOV., 2002



BLOCK 72

BLOCK 71

BLOCK 70

**CHANDELEUR
 SOUND
 AREA**

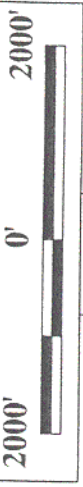
MAIN PASS AREA, REVISED

BLOCK 2

BLOCK 3

BLOCK 4

**ST. BERNARD PARISH
 CHANDELEUR SOUND AREA**



General Page 1?

TRACT 35072 - Portion of Block 3, Main Pass Area, Revised, St. Bernard Parish, Louisiana

All of the lands now or formerly constituting the beds and bottoms of all water bodies of every nature and description, and all islands and other lands formed by accretion, where allowed by law, or by reliction, and excepting tax adjudicated lands, belonging to the State of Louisiana and not presently under mineral lease on November 13, 2002, situated in St. Bernard Parish, Louisiana, and more particularly described as follows: Beginning at a point on the Northern boundary of Block 3, Main Pass Area, Revised, being the Northernmost Northwest corner of State Lease No. 7270, as amended, having Coordinates of X = 2,611,084.51 and Y = 381,330.00; thence South 56 degrees 54 minutes 46 seconds West 279.90 feet along the Northwest boundary of said State Lease No. 7270 to its Westernmost Northwest corner, said corner also being the Northeast corner of State Lease No. 7018, as amended, having Coordinates of X = 2,610,850.00 and Y = 381,177.20; thence South 56 degrees 54 minutes 48 seconds West 1,283.22 feet along the Northwest boundary of said State Lease No. 7018 to its Southwest corner, said corner also being the Northwest corner of State Lease No. 8189, as amended, having Coordinates of X = 2,609,774.86 and Y = 380,476.68; thence South 56 degrees 54 minutes 53 seconds West 307.15 feet along the Western boundary of said State Lease No. 8189 to its Southwest corner, said corner also being the Northwest corner of State Lease No. 13608, as amended, having Coordinates of X = 2,609,517.51 and Y = 380,309.01; thence South 56 degrees 54 minutes 41 seconds West 328.92 feet along the Western boundary of said State Lease No. 13608 to its Southwest corner having Coordinates of X = 2,609,241.93 and Y = 380,129.44; thence South 78 degrees 39 minutes 03 seconds East 599.69 feet along the Southern boundary of said State Lease No. 13608 to a point having Coordinates of X = 2,609,829.89 and Y = 380,011.43; thence South 81 degrees 33 minutes 07 seconds East 516.57 feet along the Southern boundary of said State Lease No. 13608 to a point having Coordinates of X = 2,610,340.85 and Y = 379,935.54; thence South 88 degrees 46 minutes 36 seconds East 273.04 feet along the said Southern boundary of said State Lease No. 13608 to its Southeast corner, said corner also being the Southwest corner of the Western portion of State Lease No. 12789, as amended, having Coordinates of X = 2,610,613.83 and Y = 379,929.71; thence South 88 degrees 46 minutes 30 seconds East 231.51 feet along the Southern boundary of said Western portion of State Lease No. 12789 to a point having Coordinates of X = 2,610,845.29 and Y = 379,924.76; thence North 87 degrees 53 minutes 02 seconds East 243.75 feet along the Southern boundary of said Western portion of State Lease No. 12789 to a point having Coordinates of X = 2,611,088.87 and Y = 379,933.76; thence South 299.59 feet to a point having Coordinates of X = 2,611,088.87 and Y = 379,634.17; thence West 1,963.87 feet to a point having Coordinates of X = 2,609,125.00 and Y = 379,634.17; thence North 1,695.83 feet to a point on the Northern boundary of said Block 3 having Coordinates of X = 2,609,125.00 and Y = 381,330.00; thence East 1,959.51 feet to the point of beginning, containing

approximately **44.89 acres**, all as more particularly outlined on a plat on file in the Office of Mineral Resources, Department of Natural Resources, as provided by the applicant. All bearings, distances and coordinates are based on Louisiana Coordinate System of 1927, (North or South Zone), where applicable.

NOTE: The above description of the Tract nominated for lease has been provided and corrected, where required, exclusively by the nomination party. Any mineral lease selected from this Tract and awarded by the Louisiana State Mineral Board shall be without warranty of any kind, either express, implied, or statutory, including, but not limited to, the implied warranties of merchantability and fitness for a particular purpose. Should the mineral lease awarded by the Louisiana State Mineral Board be subsequently modified, cancelled or abrogated due to the existence of conflicting leases, operating agreements, private claims or other future obligations or conditions which may affect all or any portion of the leased Tract, it shall not relieve the Lessee of the obligation to pay any bonus due thereon to the Louisiana State Mineral Board, nor shall the Louisiana State Mineral Board be obligated to refund any consideration paid by the Lessor prior to such modification, cancellation, or abrogation, including, but not limited to, bonuses, rentals and royalties.

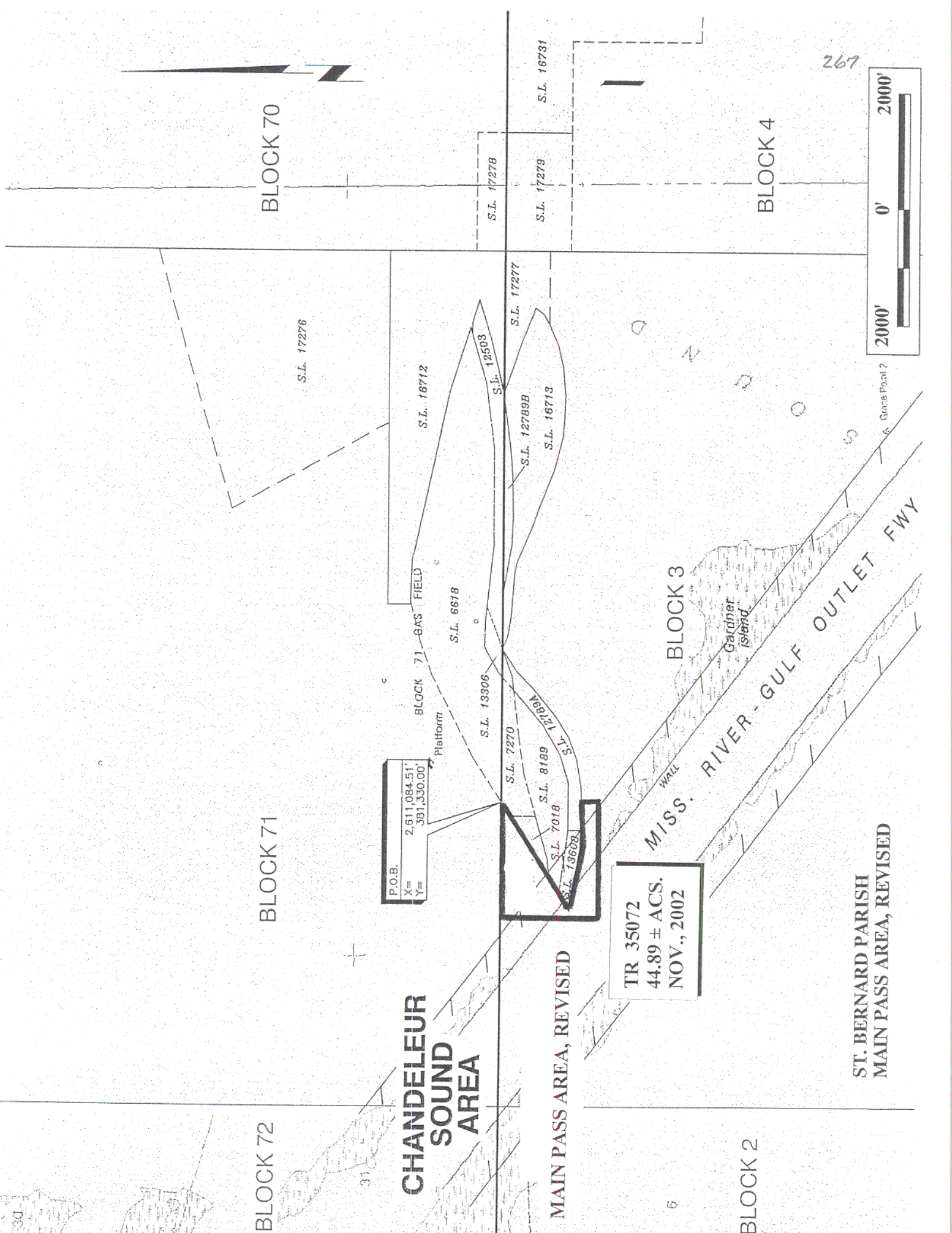
NOTE: The Department of Wildlife and Fisheries has designated certain areas in the coastal waters of the State of Louisiana as Oyster Seed Bed Areas. The exact location of those Seed Bed Areas must be obtained from the Department of Wildlife and Fisheries and any work done under a mineral lease from the State of Louisiana may necessarily be conducted in conformity with the rules and regulations promulgated by the said Department of Wildlife and Fisheries for Oyster Seed Bed Areas.

NOTE: It appears, according to our records, that a portion of this Tract is located within the restrictive safety fairway area as set out by the Corps of Engineers, U.S. Army and/or the restrictive anchorage area as set out by the U.S. Coast Guard.

NOTE: The State of Louisiana does hereby reserve, and this lease shall be subject to, the imprescriptible right of surface use in the nature of a servitude in favor of the Department of Natural Resources, including its Offices and Commissions, for the sole purpose of implementing, constructing, servicing and maintaining approved coastal zone management and/or restoration projects. Utilization of any and all rights derived under this lease by the mineral lessee, its agents, successors or assigns, shall not interfere with nor hinder the reasonable surface use by the Department of Natural Resources, its Offices or Commissions, as herein above reserved.

Applicant: Stephen M. Jenkins & Associates, Inc.

Bidder	Cash Payment	Price / Acre	Rental	Oil	Gas	Other



TRACT 35073 - Portion of Block 3, Main Pass Area, Revised, St. Bernard Parish, Louisiana

All of the lands now or formerly constituting the beds and bottoms of all water bodies of every nature and description, and all islands and other lands formed by accretion, where allowed by law, or by reliction, and excepting tax adjudicated lands, belonging to the State of Louisiana and not presently under mineral lease on November 13, 2002, situated in St. Bernard Parish, Louisiana, and more particularly described as follows: Beginning at a point within Block 3, Main Pass Area, Revised, being a point on the Southern boundary of the Western portion of State Lease No. 12789, as amended, having Coordinates of X = 2,611,088.87 and Y = 379,933.76; thence along the Southern boundary of the Western portion of said State Lease No. 12789 the following courses: North 87 degrees 52 minutes 57 seconds East 252.24 feet to a point having Coordinates of X = 2,611,340.94 and Y = 379,943.08, North 80 degrees 09 minutes 19 seconds East 488.31 feet to a point having Coordinates of X = 2,611,822.06 and Y = 380,026.57, North 70 degrees 28 minutes 05 seconds East 404.69 feet to a point having Coordinates of X = 2,612,203.46 and Y = 380,161.87, North 57 degrees 52 minutes 49 seconds East 403.75 feet to a point having Coordinates of X = 2,612,545.41 and Y = 380,376.54, North 51 degrees 03 minutes 30 seconds East 605.99 feet to a point having Coordinates of X = 2,613,016.74 and Y = 380,757.42, North 45 degrees 20 minutes 30 seconds East 465.03 feet to a point having Coordinates of X = 2,613,347.52 and Y = 381,084.28, North 56 degrees 35 minutes 16 seconds East 446.23 feet to its Northeast corner, said corner also being a point on the North boundary of said Block 3 having Coordinates of X = 2,613,720.00 and Y = 381,330.00; thence East 0.08 feet on the North boundary of said Block 3 to the Northwest corner of State Lease No. 16173 having Coordinates of X = 2,613,720.08 and Y = 381,330.00; thence along the Southern boundary of said State Lease No. 16173 the following courses: South 68 degrees 47 minutes 43 seconds East 253.58 feet to a point having Coordinates of X = 2,613,956.49 and Y = 381,238.28, South 80 degrees 39 minutes 45 seconds East 302.86 feet to a point having Coordinates of X = 2,614,255.34 and Y = 381,189.14, South 86 degrees 04 minutes 59 seconds East 502.83 feet to a point having Coordinates of X = 2,614,757.00 and Y = 381,154.79, South 85 degrees 50 minutes 00 seconds East 294.26 feet to a point having Coordinates of X = 2,615,050.48 and Y = 381,133.41, South 77 degrees 06 minutes 37 seconds East 205.35 feet to a point having Coordinates of X = 2,615,250.66 and Y = 381,087.60, South 66 degrees 28 minutes 57 seconds East 620.98 feet to a point having Coordinates of X = 2,615,820.06 and Y = 380,839.81, South 69 degrees 52 minutes 05 seconds East 405.34 feet to a point having Coordinates of X = 2,616,200.63 and Y = 380,700.30, South 68 degrees 24 minutes 17 seconds East 687.82 feet to a point having Coordinates of X = 2,616,840.17 and Y = 380,447.15; thence South 812.98 feet to a point having Coordinates of X = 2,616,840.17 and Y = 379,634.17; thence West 5,751.30 feet to a point having Coordinates of X = 2,611,088.87 and Y = 379,634.17; North 299.59 feet to the point of

beginning, containing approximately **143.52 acres**, all as more particularly outlined on a plat on file in the Office of Mineral Resources, Department of Natural Resources, as provided by the applicant. All bearings, distances and coordinates are based on Louisiana Coordinate System of 1927, (North or South Zone), where applicable.

NOTE: The above description of the Tract nominated for lease has been provided and corrected, where required, exclusively by the nomination party. Any mineral lease selected from this Tract and awarded by the Louisiana State Mineral Board shall be without warranty of any kind, either express, implied, or statutory, including, but not limited to, the implied warranties of merchantability and fitness for a particular purpose. Should the mineral lease awarded by the Louisiana State Mineral Board be subsequently modified, cancelled or abrogated due to the existence of conflicting leases, operating agreements, private claims or other future obligations or conditions which may affect all or any portion of the leased Tract, it shall not relieve the Lessee of the obligation to pay any bonus due thereon to the Louisiana State Mineral Board, nor shall the Louisiana State Mineral Board be obligated to refund any consideration paid by the Lessor prior to such modification, cancellation, or abrogation, including, but not limited to, bonuses, rentals and royalties.

NOTE: The Department of Wildlife and Fisheries has designated certain areas in the coastal waters of the State of Louisiana as Oyster Seed Bed Areas. The exact location of those Seed Bed Areas must be obtained from the Department of Wildlife and Fisheries and any work done under a mineral lease from the State of Louisiana may necessarily be conducted in conformity with the rules and regulations promulgated by the said Department of Wildlife and Fisheries for Oyster Seed Bed Areas.

NOTE: It appears, according to our records, that a portion of this Tract is located within the restrictive safety fairway area as set out by the Corps of Engineers, U.S. Army and/or the restrictive anchorage area as set out by the U.S. Coast Guard.

NOTE: The State of Louisiana does hereby reserve, and this lease shall be subject to, the imprescriptible right of surface use in the nature of a servitude in favor of the Department of Natural Resources, including its Offices and Commissions, for the sole purpose of implementing, constructing, servicing and maintaining approved coastal zone management and/or restoration projects. Utilization of any and all rights derived under this lease by the mineral lessee, its agents, successors or assigns, shall not interfere with nor hinder the reasonable surface use by the Department of Natural Resources, its Offices or Commissions, as herein above reserved.

Applicant: Stephen M. Jenkins & Associates, Inc.

Bidder	Cash Payment	Price / Acre	Rental	Oil	Gas	Other



BLOCK 72

BLOCK 71

BLOCK 70

CHANDELEUR SOUND AREA

MAIN PASS AREA, REVISED

BLOCK 2

BLOCK 3

BLOCK 4

ST. BERNARD PARISH
MAIN PASS AREA, REVISED

BLOCK 71 GAS FIELD

Platform

Gardner Island

MISS. RIVER - GULF OUTLET FWY

Graves Point?

S.L. 17276

S.L. 16712

S.L. 6618

S.L. 13306

S.L. 7270

S.L. 8189

S.L. 7018

S.L. 13608

S.L. 17277

S.L. 12503

S.L. 12789B

S.L. 16713

S.L. 17278

S.L. 17279

S.L. 16731

TR 35073
143.52 ± ACS.
NOV., 2002

P.O.B.
X= 2,611,088.87
Y= 379,933.76



271

31

6

TRACT 35074 - Portion of Block 3, Main Pass Area, Revised, St. Bernard Parish, Louisiana

All of the lands now or formerly constituting the beds and bottoms of all water bodies of every nature and description, and all islands and other lands formed by accretion, where allowed by law, or by reliction, and excepting tax adjudicated lands, belonging to the State of Louisiana and not presently under mineral lease on November 13, 2002, situated in St. Bernard Parish, Louisiana, and more particularly described as follows: Beginning at the Southeast corner of State Lease No.17277, said corner also being a point on the East boundary of Block 3, Main Pass Area, Revised, having Coordinates of X = 2,620,600.00 and Y = 380,547.34; thence South 2,481.99 feet along the said East boundary of said Block 3 to a point having Coordinates of X = 2,620,600.00 and Y = 378,065.35; thence North 67 degrees 21 minutes 05 seconds West 4,074.01 feet to a point having Coordinates of X = 2,616,840.17 and Y = 379,634.17; thence North 812.98 feet to a point on the Southern boundary of State Lease No. 16713 having Coordinates of X = 2,616,840.17 and Y = 380,447.15; thence along the said Southern boundary of State Lease No. 16713 the following courses: South 74 degrees 19 minutes 53 seconds East 292.18 feet to a point having Coordinates of X = 2,617,121.49 and Y = 380,368.24, South 77 degrees 03 minutes 21 seconds East 300.22 feet to a point having Coordinates of X = 2,617,414.08 and Y = 380,300.99, South 84 degrees 27 minutes 51 seconds East 304.86 feet to a point having Coordinates of X = 2,617,717.52 and Y = 380,271.58, South 87 degrees 56 minutes 22 seconds East 406.62 feet to a point having Coordinates of X = 2,618,123.88 and Y = 380,256.96, North 84 degrees 45 minutes 05 seconds East 479.47 feet to a point having Coordinates of X = 2,618,601.34 and Y = 380,300.82, North 77 degrees 42 minutes 12 seconds East 390.80 feet to a point having Coordinates of X = 2,618,983.17 and Y = 380,384.05, North 66 degrees 13 minutes 35 seconds East 405.06 feet to a point, said point also being the Southwest corner of State Lease No. 17277 having Coordinates of X = 2,619,353.86 and Y = 380,547.34; thence East 1,246.14 feet along the South boundary of said State Lease No. 17277 to the point of beginning, containing approximately **134.30 acres**, all as more particularly outlined on a plat on file in the Office of Mineral Resources, Department of Natural Resources, as provided by the applicant. All bearings, distances and coordinates are based on Louisiana Coordinate System of 1927, (North or South Zone), where applicable.

NOTE: The above description of the Tract nominated for lease has been provided and corrected, where required, exclusively by the nomination party. Any mineral lease selected from this Tract and awarded by the Louisiana State Mineral Board shall be without warranty of any kind, either express, implied, or statutory, including, but not limited to, the implied warranties of merchantability and fitness for a particular purpose. Should the mineral lease awarded by the Louisiana State Mineral Board be subsequently modified, cancelled or abrogated due to the

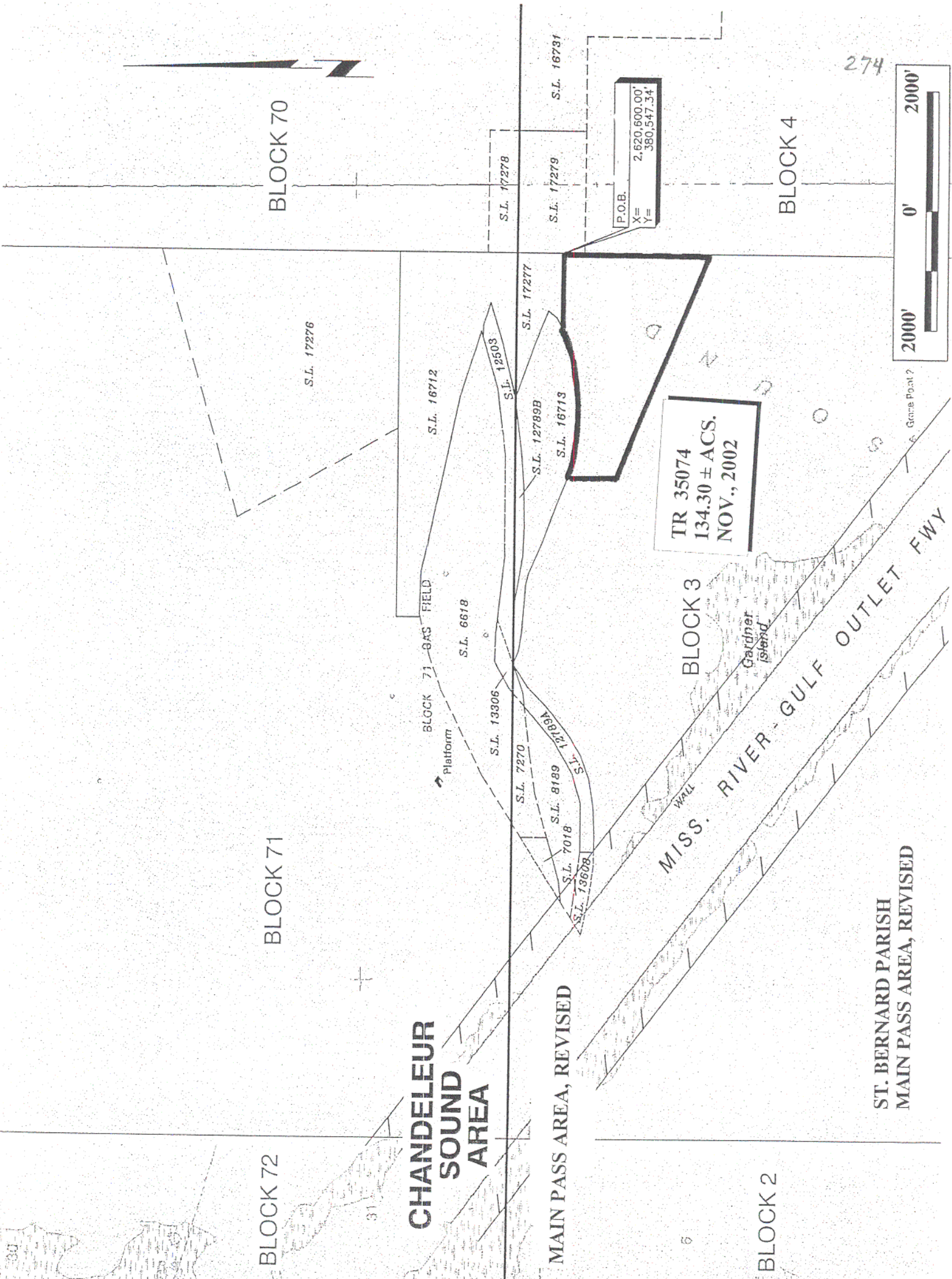
existence of conflicting leases, operating agreements, private claims or other future obligations or conditions which may affect all or any portion of the leased Tract, it shall not relieve the Lessee of the obligation to pay any bonus due thereon to the Louisiana State Mineral Board, not shall the Louisiana State Mineral Board be obligated to refund any consideration paid by the Lessor prior to such modification, cancellation, or abrogation, including, but not limited to, bonuses, rentals and royalties.

NOTE: The Department of Wildlife and Fisheries has designated certain areas in the coastal waters of the State of Louisiana as Oyster Seed Bed Areas. The exact location of those Seed Bed Areas must be obtained from the Department of Wildlife and Fisheries and any work done under a mineral lease from the State of Louisiana may necessarily be conducted in conformity with the rules and regulations promulgated by the said Department of Wildlife and Fisheries for Oyster Seed Bed Areas.

NOTE: The State of Louisiana does hereby reserve, and this lease shall be subject to, the imprescriptible right of surface use in the nature of a servitude in favor of the Department of Natural Resources, including its Offices and Commissions, for the sole purpose of implementing, constructing, servicing and maintaining approved coastal zone management and/or restoration projects. Utilization of any and all rights derived under this lease by the mineral lessee, its agents, successors or assigns, shall not interfere with nor hinder the reasonable surface use by the Department of Natural Resources, its Offices or Commissions, as herein above reserved.

Applicant: Stephen M. Jenkins & Associates, Inc.

Bidder	Cash Payment	Price / Acre	Rental	Oil	Gas	Other



BLOCK 70

BLOCK 4

BLOCK 71

BLOCK 3

BLOCK 72

BLOCK 2

**CHANDELEUR
SOUND
AREA**

MAIN PASS AREA, REVISED

ST. BERNARD PARISH
MAIN PASS AREA, REVISED

TR 35074
134.30 ± ACS.
NOV., 2002

P.O.B.
X= 2,620,600.00
Y= 380,547.34



Game Point?

274

BLOCK 71 GAS FIELD

Platform

Gardner Island

MISS. RIVER GULF OUTLET FWY WALL

S.L. 17276

S.L. 16712

S.L. 6618

S.L. 13306

S.L. 7270

S.L. 8189

S.L. 7018

S.L. 13608

S.L. 12784

S.L. 12789B

S.L. 16713

S.L. 17277

S.L. 12503

S.L. 17278

S.L. 17279

S.L. 16731

TRACT 35075 - Portion of Block 28, Breton Sound Area, Plaquemines Parish, Louisiana

All of the lands now or formerly constituting the beds and bottoms of all water bodies of every nature and description, and all islands and other lands formed by accretion, where allowed by law, or by reliction, and excepting tax adjudicated lands, belonging to the State of Louisiana and not presently under mineral lease on November 13, 2002, situated in Plaquemines Parish, Louisiana, and more particularly described as follows: Beginning at a point having Coordinates of X = 2,709,100.00 and Y = 322,330.00, said point also being the Southeast corner of Block 28, Breton Sound Area; thence West 6,460.00 feet on and along the South line of said Block 28 to a point having Coordinates of X = 2,702,640.00 and Y = 322,330.00, said point also being on an Eastern boundary of State Lease No. 1999, as amended; thence on and along the Eastern and Southern boundaries of said State Lease No. 1999 the following courses and distances, to-wit: North 5,200.00 feet to a point having Coordinates of X = 2,702,640.00 and Y = 327,530.00; and East 6,460.00 feet to a point having Coordinates of X = 2,709,100.00 and Y = 327,530.00, said point also being on the East line of said Block 28; thence South 5,200.00 feet on and along said East line of said Block 28 to the point of beginning, containing approximately **771.17 acres**, all as more particularly outlined on a plat on file in the Office of Mineral Resources, Department of Natural Resources, as provided by the applicant. All bearings, distances and coordinates are based on Louisiana Coordinate System of 1927, (North or South Zone), where applicable.

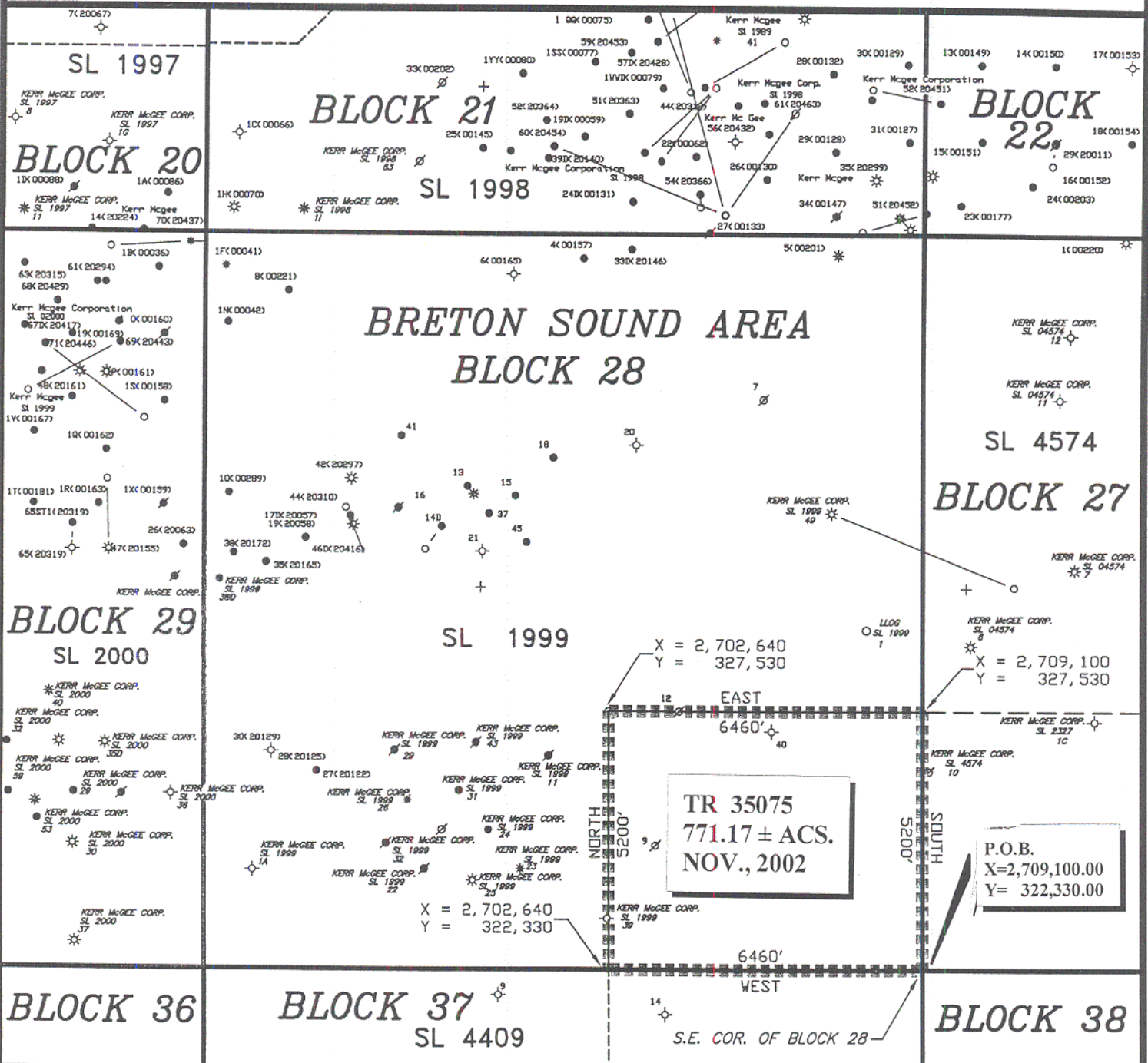
NOTE: The above description of the Tract nominated for lease has been provided and corrected, where required, exclusively by the nomination party. Any mineral lease selected from this Tract and awarded by the Louisiana State Mineral Board shall be without warranty of any kind, either express, implied, or statutory, including, but not limited to, the implied warranties of merchantability and fitness for a particular purpose. Should the mineral lease awarded by the Louisiana State Mineral Board be subsequently modified, cancelled or abrogated due to the existence of conflicting leases, operating agreements, private claims or other future obligations or conditions which may affect all or any portion of the leased Tract, it shall not relieve the Lessee of the obligation to pay any bonus due thereon to the Louisiana State Mineral Board, nor shall the Louisiana State Mineral Board be obligated to refund any consideration paid by the Lessor prior to such modification, cancellation, or abrogation, including, but not limited to, bonuses, rentals and royalties.

NOTE: The State of Louisiana does hereby reserve, and this lease shall be subject to, the imprescriptible right of surface use in the nature of a servitude in favor of the Department of Natural Resources, including its Offices and Commissions, for the sole purpose of implementing, constructing, servicing and maintaining approved coastal zone management

and/or restoration projects. Utilization of any and all rights derived under this lease by the mineral lessee, its agents, successors or assigns, shall not interfere with nor hinder the reasonable surface use by the Department of Natural Resources, its Offices or Commissions, as herein above reserved.

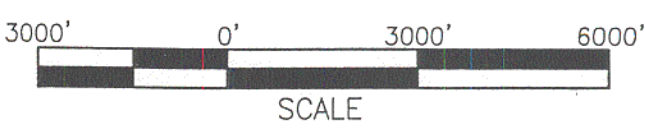
Applicant: Robert A. Schroeder

Bidder	Cash Payment	Price / Acre	Rental	Oil	Gas	Other



ALL COORDINATES, BEARINGS AND DISTANCES ARE GRID, AND ARE ON THE LOUISIANA LAMBERT PLANE COORDINATE SYSTEM, SOUTH ZONE, 1927 NORTH AMERICAN DATUM.

BLOCK 28
BRETON SOUND AREA
PLAQUEMINES PARISH, LOUISIANA
SCALE 1" = 3000'



TRACT 35076 - Portion of Block 27, Breton Sound Area, Plaquemines Parish, Louisiana

All of the lands now or formerly constituting the beds and bottoms of all water bodies of every nature and description, and all islands and other lands formed by accretion, where allowed by law, or by reliction, and excepting tax adjudicated lands, belonging to the State of Louisiana and not presently under mineral lease on November 13, 2002, situated in Plaquemines Parish, Louisiana, and more particularly described as follows: Beginning at a point having Coordinates of X = 2,709,100.00 and Y = 322,330.00, said point also being the Southwest corner of Block 27, Breton Sound Area; thence North 5,200.00 feet on and along the West line of said Block 27 to a point having Coordinates of X = 2,709,100.00 and Y = 327,530.00, said point also being on a Southern boundary of State Lease No. 4574, as amended; thence on and along the Southern and Eastern boundaries of said State Lease No. 4574 and on and along the Southern and Eastern boundaries of State Lease No. 15958 the following courses and distances, to-wit: East 7,500.00 feet to a point having Coordinates of X = 2,716,600.00 and Y = 327,530.00, said point also being the Southwest corner of said State Lease No. 15958; East 3,600.00 feet to a point having Coordinates of X = 2,720,200.00 and Y = 327,530.00, said point also being the Southeast corner of said State Lease No. 15958; North 5,500.00 feet to a point having Coordinates of X = 2,720,200.00 and Y = 333,030.00, said point also being the Northeast corner of said State Lease No. 15958; North 28 degrees 30 minutes 40 seconds East 4,608.95 feet to a point having Coordinates of X = 2,722,400.00 and Y = 337,080.00, said point also being on the North line of said Block 27; thence East 1,450.00 feet on and along said North line of said Block 27 to a point having Coordinates of X = 2,723,850.00 and Y = 337,080.00, said point also being the Northeast corner of said Block 27; thence South 6,340.17 feet on and along said East line of said Block 27 to a point having Coordinates of X = 2,723,850.00 and Y = 330,739.83; thence South 44 degrees 16 minutes 54 seconds West 2,189.96 feet to a point having Coordinates of X = 2,722,321.00 and Y = 329,172.00; thence South 34 degrees 10 minutes 44 seconds West 2,892.59 feet to a point having Coordinates of X = 2,720,696.00 and Y = 326,779.00; thence South 31 degrees 07 minutes 15 seconds West 5,196.95 feet to a point having Coordinates of X = 2,718,009.98 and Y = 322,330.00, said point also being on the South line of said Block 27; thence West 8,909.98 feet on and along said South line of said Block 27 to the point of beginning, containing approximately **1,843.29 acres**, all as more particularly outlined on a plat on file in the Office of Mineral Resources, Department of Natural Resources, as provided by the applicant. All bearings, distances and coordinates are based on Louisiana Coordinate System of 1927, (North or South Zone), where applicable.

NOTE: The above description of the Tract nominated for lease has been provided and corrected, where required, exclusively by the nomination party. Any mineral lease selected from this Tract and awarded by the

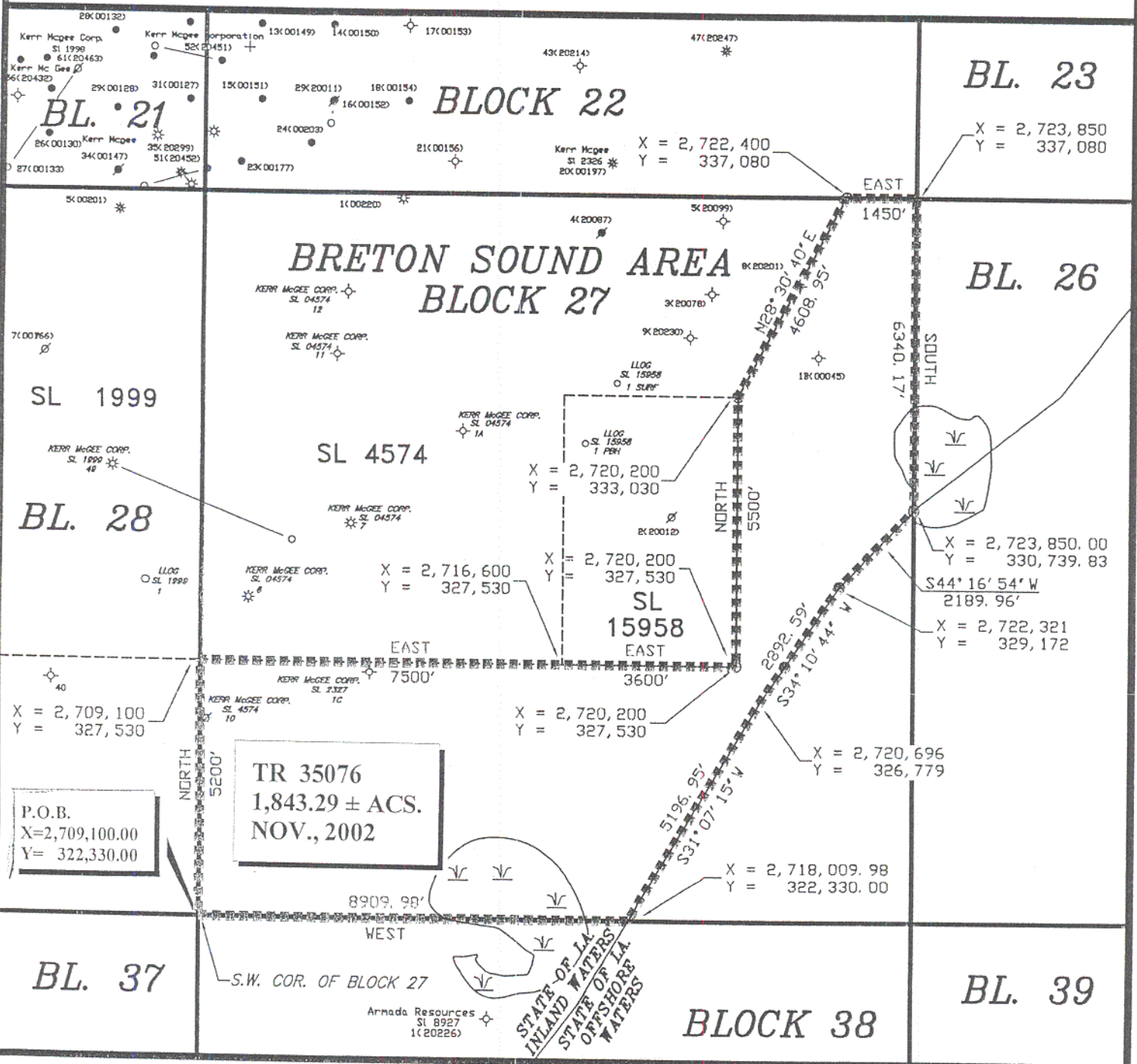
Louisiana State Mineral Board shall be without warranty of any kind, either express, implied, or statutory, including, but not limited to, the implied warranties of merchantability and fitness for a particular purpose. Should the mineral lease awarded by the Louisiana State Mineral Board be subsequently modified, cancelled or abrogated due to the existence of conflicting leases, operating agreements, private claims or other future obligations or conditions which may affect all or any portion of the leased Tract, it shall not relieve the Lessee of the obligation to pay any bonus due thereon to the Louisiana State Mineral Board, nor shall the Louisiana State Mineral Board be obligated to refund any consideration paid by the Lessor prior to such modification, cancellation, or abrogation, including, but not limited to, bonuses, rentals and royalties.

NOTE: The Department of Wildlife and Fisheries has designated certain areas in the coastal waters of the State of Louisiana as Oyster Seed Bed Areas. The exact location of those Seed Bed Areas must be obtained from the Department of Wildlife and Fisheries and any work done under a mineral lease from the State of Louisiana may necessarily be conducted in conformity with the rules and regulations promulgated by the said Department of Wildlife and Fisheries for Oyster Seed Bed Areas.

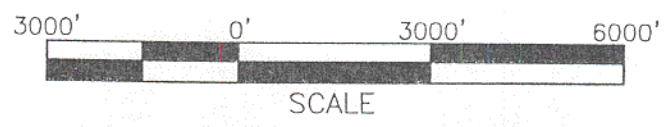
NOTE: The State of Louisiana does hereby reserve, and this lease shall be subject to, the imprescriptible right of surface use in the nature of a servitude in favor of the Department of Natural Resources, including its Offices and Commissions, for the sole purpose of implementing, constructing, servicing and maintaining approved coastal zone management and/or restoration projects. Utilization of any and all rights derived under this lease by the mineral lessee, its agents, successors or assigns, shall not interfere with nor hinder the reasonable surface use by the Department of Natural Resources, its Offices or Commissions, as herein above reserved.

Applicant: Robert A. Schroeder, Inc.

Bidder	Cash Payment	Price / Acre	Rental	Oil	Gas	Other



LOCATED IN
 BLOCK 27
 BRETON SOUND AREA
 PLAQUEMINES PARISH, LOUISIANA
 SCALE 1" = 3000'



ALL COORDINATES, BEARINGS AND DISTANCES ARE GRID, AND ARE ON THE LOUISIANA LAMBERT PLANE COORDINATE SYSTEM, SOUTH ZONE, 1927 NORTH AMERICAN DATUM.

TRACT 35077 - Portion of Block 52, Main Pass Area, Revised, Plaquemines Parish, Louisiana

All of the lands now or formerly constituting the beds and bottoms of all water bodies of every nature and description, and all islands and other lands formed by accretion, where allowed by law, or by reliction, and excepting tax adjudicated lands, belonging to the State of Louisiana and not presently under mineral lease on November 13, 2002, situated in Plaquemines Parish, Louisiana, and more particularly described as follows: Beginning at a point on the East boundary of State Lease No. 14646 and the Southwest corner of State Lease No. 16977 having Coordinates of X = 2,652,750.00 and Y = 261,271.20; thence along the South boundary of said State Lease No. 16977 East 4,154.00 feet to its Southeast corner, the most South Southwest corner of State Lease No. 16664 and the Northwest corner of State Lease No. 16849 having Coordinates of X = 2,656,904.00 and Y = 261,271.20; thence along the boundaries of said State Lease No. 16849 the following: South 02 degrees 59 minutes 38 seconds East 1,404.82 feet and Southeast to the Northwest corner of State Lease No. 16850; thence along the South boundary of said State Lease No. 16850 South 54 degrees 11 minutes 51 seconds East 2,363.88 feet its Southeast corner and the Northeast corner of State Lease No. 11188, as amended, having Coordinates of X = 2,664,850.00 and Y = 257,700.00; thence along the West boundary of said State Lease No. 11188 South 37 degrees 23 minutes 49 seconds West 1,349.60 feet to the Northeast corner of State Lease No. 16976 having Coordinates of X = 2,664,030.34 and Y = 256,627.81; thence along the boundaries of said State Lease No. 16976 the following: North 78 degrees 00 minutes 00 seconds West 5,101.83 feet, West 2,000.00 feet and South approximately 1,091.00 feet to a point on the Southern boundary of said Block 52 and the North boundary of State Lease No. 195, Grand Bay Area, as amended; thence Northwesterly and Westerly along the Southern boundary of said Block 52 and the Northern boundary of said State Lease No. 195 to the Southeast corner of said State Lease No. 14646; thence North approximately 881.26 feet on the East boundary of State Lease No. 14646 to the point of beginning, **LESS AND EXCEPT**, if any, that portion of State Lease No. 195, as amended, that may lie within the above described tract, containing approximately **602.42 acres**, all as more particularly outlined on a plat on file in the Office of Mineral Resources, Department of Natural Resources, as provided by the applicant. All bearings, distances and coordinates are based on Louisiana Coordinate System of 1927, (North or South Zone), where applicable.

NOTE: The above description of the Tract nominated for lease has been provided and corrected, where required, exclusively by the nomination party. Any mineral lease selected from this Tract and awarded by the Louisiana State Mineral Board shall be without warranty of any kind, either express, implied, or statutory, including, but not limited to, the implied warranties of merchantability and fitness for a particular purpose. Should the mineral lease awarded by the Louisiana State Mineral

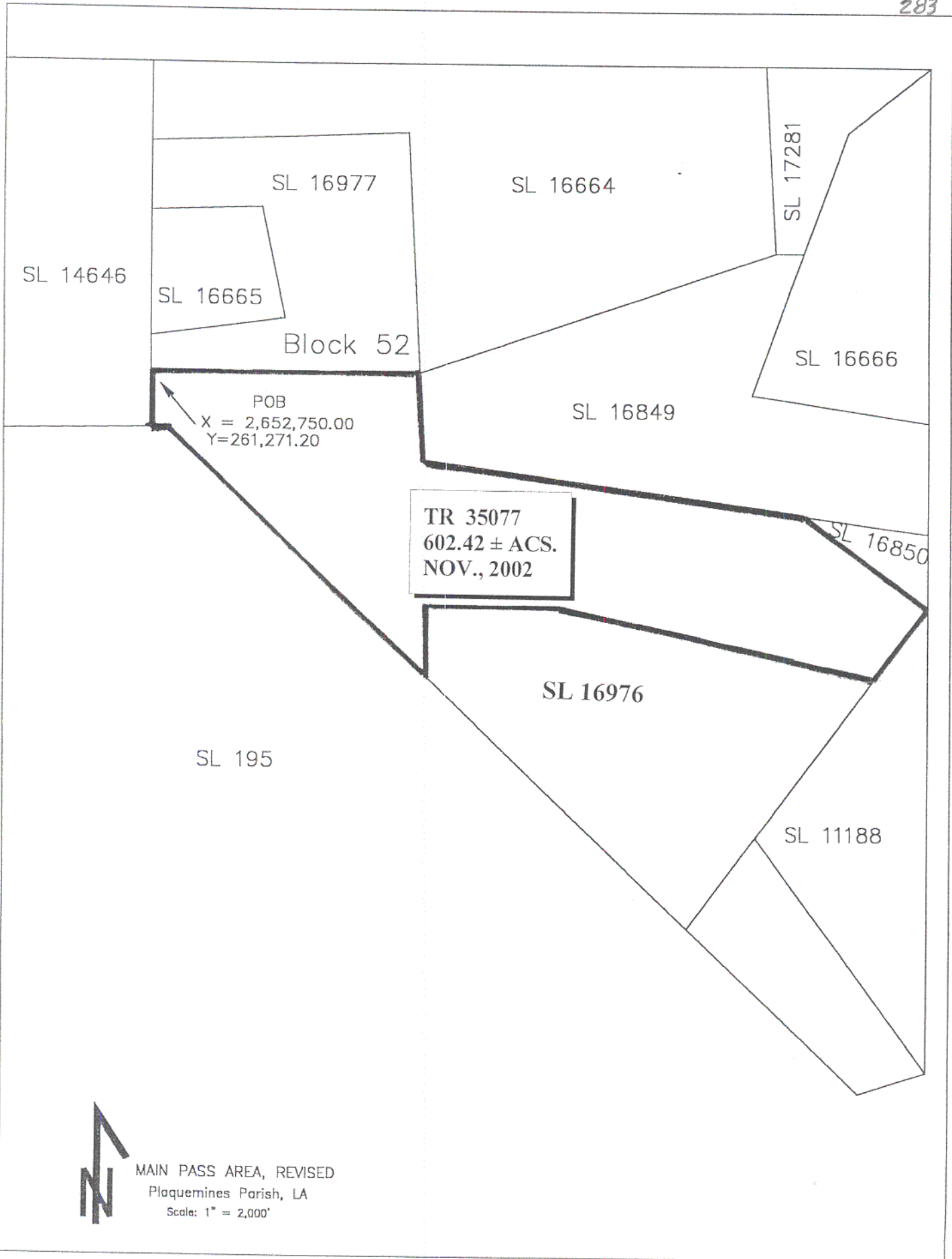
Board be subsequently modified, cancelled or abrogated due to the existence of conflicting leases, operating agreements, private claims or other future obligations or conditions which may affect all or any portion of the leased Tract, it shall not relieve the Lessee of the obligation to pay any bonus due thereon to the Louisiana State Mineral Board, not shall the Louisiana State Mineral Board be obligated to refund any consideration paid by the Lessor prior to such modification, cancellation, or abrogation, including, but not limited to, bonuses, rentals and royalties.

NOTE: The Department of Wildlife and Fisheries has designated certain areas in the coastal waters of the State of Louisiana as Oyster Seed Bed Areas. The exact location of those Seed Bed Areas must be obtained from the Department of Wildlife and Fisheries and any work done under a mineral lease from the State of Louisiana may necessarily be conducted in conformity with the rules and regulations promulgated by the said Department of Wildlife and Fisheries for Oyster Seed Bed Areas.

NOTE: The State of Louisiana does hereby reserve, and this lease shall be subject to, the imprescriptible right of surface use in the nature of a servitude in favor of the Department of Natural Resources, including its Offices and Commissions, for the sole purpose of implementing, constructing, servicing and maintaining approved coastal zone management and/or restoration projects. Utilization of any and all rights derived under this lease by the mineral lessee, its agents, successors or assigns, shall not interfere with nor hinder the reasonable surface use by the Department of Natural Resources, its Offices or Commissions, as herein above reserved.

Applicant: McGregor Oil & Gas, Inc.

Bidder	Cash Payment	Price / Acre	Rental	Oil	Gas	Other



TRACT 35078 - Portion of Block 52, Main Pass Area, Revised, Plaquemines Parish, Louisiana

All of the lands now or formerly constituting the beds and bottoms of all water bodies of every nature and description, and all islands and other lands formed by accretion, where allowed by law, or by reliction, and excepting tax adjudicated lands, belonging to the State of Louisiana and not presently under mineral lease on November 13, 2002, situated in Plaquemines Parish, Louisiana, and more particularly described as follows: Beginning at a point within Block 52, Main Pass Area, Revised, being on the East boundary of State Lease No. 16976 and the most Western point of State Lease No. 11188, as amended, having Coordinates of X = 2,662,165.59 and Y = 254,188.54; thence along the West boundary of said State Lease No. 11188 South 36 degrees 47 minutes 09 seconds East approximately 4,483 feet to its most Southern tip and a point on the North boundary of State Lease No. 195, Grand Bay Area, as amended, and the South boundary of said Block 52; thence along the boundaries of said State Lease No. 195 and said Block 52 Southwesterly and Northwesterly to the Southeast corner of said State Lease No. 16976 at an intersection of a line having a bearing of North 37 degrees 23 minutes 49 seconds East; thence along the East boundary of said State Lease No. 16976 North 37 degrees 23 minutes 49 seconds East approximately 1,758 feet to the point of beginning, containing approximately **128 acres**, all as more particularly outlined on a plat on file in the Office of Mineral Resources, Department of Natural Resources, as provided by the applicant. All bearings, distances and coordinates are based on Louisiana Coordinate System of 1927, (North or South Zone), where applicable.

NOTE: The above description of the Tract nominated for lease has been provided and corrected, where required, exclusively by the nomination party. Any mineral lease selected from this Tract and awarded by the Louisiana State Mineral Board shall be without warranty of any kind, either express, implied, or statutory, including, but not limited to, the implied warranties of merchantability and fitness for a particular purpose. Should the mineral lease awarded by the Louisiana State Mineral Board be subsequently modified, cancelled or abrogated due to the existence of conflicting leases, operating agreements, private claims or other future obligations or conditions which may affect all or any portion of the leased Tract, it shall not relieve the Lessee of the obligation to pay any bonus due thereon to the Louisiana State Mineral Board, nor shall the Louisiana State Mineral Board be obligated to refund any consideration paid by the Lessor prior to such modification, cancellation, or abrogation, including, but not limited to, bonuses, rentals and royalties.

NOTE: The Department of Wildlife and Fisheries has designated certain areas in the coastal waters of the State of Louisiana as Oyster Seed Bed Areas. The exact location of those Seed Bed Areas must be obtained from the Department of Wildlife and Fisheries and any work done under a mineral

lease from the State of Louisiana may necessarily be conducted in conformity with the rules and regulations promulgated by the said Department of Wildlife and Fisheries for Oyster Seed Bed Areas.

NOTE: The State of Louisiana does hereby reserve, and this lease shall be subject to, the imprescriptible right of surface use in the nature of a servitude in favor of the Department of Natural Resources, including its Offices and Commissions, for the sole purpose of implementing, constructing, servicing and maintaining approved coastal zone management and/or restoration projects. Utilization of any and all rights derived under this lease by the mineral lessee, its agents, successors or assigns, shall not interfere with nor hinder the reasonable surface use by the Department of Natural Resources, its Offices or Commissions, as herein above reserved.

Applicant: Cypress Energy Corporation

Bidder	Cash Payment	Price / Acre	Rental	Oil	Gas	Other

Block 52

SL 16976

SL 11188

POB
X = 2,662,165.59
Y = 254,188.54

SL 195

TR 35078
128 ± ACS.
NOV., 2002

MAIN PASS AREA, REVISED
Plaquemines Parish, LA



Scale: 1" = 2,000'

