

TRACT 35040 - Lake Borgne Area, St. Bernard Parish, Louisiana

All of the lands now or formerly constituting the beds and bottoms of all water bodies of every nature and description, and all islands and other lands formed by accretion, where allowed by law, or by reliction, and excepting tax adjudicated lands, belonging to the State of Louisiana and not presently under mineral lease on November 13, 2002, situated in St. Bernard Parish, Louisiana, and more particularly described as follows: Beginning at a point having Coordinates of X = 2,539,491.95 and Y = 520,958.70; thence South 14,758.05 feet to a point having Coordinates of X = 2,539,491.95 and Y = 506,200.65; thence West 7,379.02 feet to a point having Coordinates of X = 2,532,112.93 and Y = 506,200.65; thence North 14,758.05 feet to a point having Coordinates of X = 2,532,112.93 and Y = 520,958.70; thence East 7,379.02 feet to the point of beginning, containing approximately **2,500.00 acres**, all as more particularly outlined on a plat on file in the Office of Mineral Resources, Department of Natural Resources, as provided by the applicant. All bearings, distances and coordinates are based on Louisiana Coordinate System of 1927, (North or South Zone), where applicable.

NOTE: The above description of the Tract nominated for lease has been provided and corrected, where required, exclusively by the nomination party. Any mineral lease selected from this Tract and awarded by the Louisiana State Mineral Board shall be without warranty of any kind, either express, implied, or statutory, including, but not limited to, the implied warranties of merchantability and fitness for a particular purpose. Should the mineral lease awarded by the Louisiana State Mineral Board be subsequently modified, cancelled or abrogated due to the existence of conflicting leases, operating agreements, private claims or other future obligations or conditions which may affect all or any portion of the leased Tract, it shall not relieve the Lessee of the obligation to pay any bonus due thereon to the Louisiana State Mineral Board, nor shall the Louisiana State Mineral Board be obligated to refund any consideration paid by the Lessor prior to such modification, cancellation, or abrogation, including, but not limited to, bonuses, rentals and royalties.

NOTE: The Office of Mineral Resources will require a minimum bonus of \$230 per acre and a minimum royalty of 23%.

NOTE: The Department of Wildlife and Fisheries has designated certain areas in the coastal waters of the State of Louisiana as Oyster Seed Bed Areas. The exact location of those Seed Bed Areas must be obtained from the Department of Wildlife and Fisheries and any work done under a mineral lease from the State of Louisiana may necessarily be conducted in conformity with the rules and regulations promulgated by the said Department of Wildlife and Fisheries for Oyster Seed Bed Areas.

NOTE: The State of Louisiana does hereby reserve, and this lease shall be subject to, the imprescriptible right of surface use in the nature of a servitude in favor of the Department of Natural Resources, including its Offices and Commissions, for the sole purpose of implementing, constructing, servicing and maintaining approved coastal zone management and/or restoration projects. Utilization of any and all rights derived under this lease by the mineral lessee, its agents, successors or assigns, shall not interfere with nor hinder the reasonable surface use by the Department of Natural Resources, its Offices or Commissions, as herein above reserved.

Applicant: Noxxe Energy

Bidder	Cash Payment	Price / Acre	Rental	Oil	Gas	Other

P.O.B.
X = 2,539,491.95
Y = 520,958.70

GAS FIELD

TR 35040
2,500.00 ± ACS.
NOV., 2002

LAKE BORGNE

SL 17142
LAKE BORGNE
GAS FIELD



TRACT 35041 - Lake Borgne Area, St. Bernard Parish, Louisiana

All of the lands now or formerly constituting the beds and bottoms of all water bodies of every nature and description, and all islands and other lands formed by accretion, where allowed by law, or by reliction, and excepting tax adjudicated lands, belonging to the State of Louisiana and not presently under mineral lease on November 13, 2002, situated in St. Bernard Parish, Louisiana, and more particularly described as follows: Beginning at a point having Coordinates of X = 2,539,491.95 and Y = 506,200.65; thence South 7,379.02 feet to a point having Coordinates of X = 2,539,491.95 and Y = 498,821.63; thence West 14,758.05 feet to a point having Coordinates of X = 2,524,733.90 and Y = 498,821.63; thence North 7,379.02 feet to a point having Coordinates of X = 2,524,733.90 and Y = 506,200.65; thence East 14,758.05 feet to the point of beginning, containing approximately **2,500.00 acres**, all as more particularly outlined on a plat on file in the Office of Mineral Resources, Department of Natural Resources, as provided by the applicant. All bearings, distances and coordinates are based on Louisiana Coordinate System of 1927, (North or South Zone), where applicable.

NOTE: The above description of the Tract nominated for lease has been provided and corrected, where required, exclusively by the nomination party. Any mineral lease selected from this Tract and awarded by the Louisiana State Mineral Board shall be without warranty of any kind, either express, implied, or statutory, including, but not limited to, the implied warranties of merchantability and fitness for a particular purpose. Should the mineral lease awarded by the Louisiana State Mineral Board be subsequently modified, cancelled or abrogated due to the existence of conflicting leases, operating agreements, private claims or other future obligations or conditions which may affect all or any portion of the leased Tract, it shall not relieve the Lessee of the obligation to pay any bonus due thereon to the Louisiana State Mineral Board, nor shall the Louisiana State Mineral Board be obligated to refund any consideration paid by the Lessor prior to such modification, cancellation, or abrogation, including, but not limited to, bonuses, rentals and royalties.

NOTE: The Office of Mineral Resources will require a minimum bonus of \$230 per acre and a minimum royalty of 23%.

NOTE: The Department of Wildlife and Fisheries has designated certain areas in the coastal waters of the State of Louisiana as Oyster Seed Bed Areas. The exact location of those Seed Bed Areas must be obtained from the Department of Wildlife and Fisheries and any work done under a mineral lease from the State of Louisiana may necessarily be conducted in conformity with the rules and regulations promulgated by the said Department of Wildlife and Fisheries for Oyster Seed Bed Areas.

NOTE: The State of Louisiana does hereby reserve, and this lease shall be subject to, the imprescriptible right of surface use in the nature of a servitude in favor of the Department of Natural Resources, including its Offices and Commissions, for the sole purpose of implementing, constructing, servicing and maintaining approved coastal zone management and/or restoration projects. Utilization of any and all rights derived under this lease by the mineral lessee, its agents, successors or assigns, shall not interfere with nor hinder the reasonable surface use by the Department of Natural Resources, its Offices or Commissions, as herein above reserved.

Applicant: Noxxe Energy

Bidder	Cash Payment	Price / Acre	Rental	Oil	Gas	Other

LAKE BORGNE

173

SL 17141

SL 17142

LAKE BORGNE
GAS FIELD

P.O.B.
X = 2,539,491.95
Y = 506,200.65

TR 35041
2,500.00 ± ACS.
NOV., 2002

074



0' SCALE 3000'

ST. BERNARD PARISH, LA

TRACT 35042 - Lake Borgne Area, St. Bernard Parish, Louisiana

All of the lands now or formerly constituting the beds and bottoms of all water bodies of every nature and description, and all islands and other lands formed by accretion, where allowed by law, or by reliction, and excepting tax adjudicated lands, belonging to the State of Louisiana and not presently under mineral lease on November 13, 2002, situated in St. Bernard Parish, Louisiana, and more particularly described as follows: Beginning at a point having Coordinates of X = 2,539,491.95 and Y = 498,821.63; thence South 7,379.03 feet to a point having Coordinates of X = 2,539,491.95 and Y = 491,442.60; thence West 7,863.56 feet to a point being the Northeast corner of State Lease No. 17075 having Coordinates of X = 2,531,628.39 and Y = 491,442.60; thence West 2,207.67 feet along the North line of said State Lease No. 17075 to its Northwest corner having Coordinates of X = 2,529,420.72 and Y = 491,442.60; thence West 4,686.82 feet to a point having Coordinates of X = 2,524,733.90 and Y = 491,442.60; thence North 7,379.03 feet to a point having Coordinates of X = 2,524,733.90 and Y = 498,821.63; thence East 14,758.05 feet to the point of beginning, containing approximately **2,500.00 acres**, all as more particularly outlined on a plat on file in the Office of Mineral Resources, Department of Natural Resources, as provided by the applicant. All bearings, distances and coordinates are based on Louisiana Coordinate System of 1927, (North or South Zone), where applicable.

NOTE: The above description of the Tract nominated for lease has been provided and corrected, where required, exclusively by the nomination party. Any mineral lease selected from this Tract and awarded by the Louisiana State Mineral Board shall be without warranty of any kind, either express, implied, or statutory, including, but not limited to, the implied warranties of merchantability and fitness for a particular purpose. Should the mineral lease awarded by the Louisiana State Mineral Board be subsequently modified, cancelled or abrogated due to the existence of conflicting leases, operating agreements, private claims or other future obligations or conditions which may affect all or any portion of the leased Tract, it shall not relieve the Lessee of the obligation to pay any bonus due thereon to the Louisiana State Mineral Board, nor shall the Louisiana State Mineral Board be obligated to refund any consideration paid by the Lessor prior to such modification, cancellation, or abrogation, including, but not limited to, bonuses, rentals and royalties.

NOTE: The Office of Mineral Resources will require a minimum bonus of \$230 per acre and a minimum royalty of 23%.

NOTE: The Department of Wildlife and Fisheries has designated certain areas in the coastal waters of the State of Louisiana as Oyster Seed Bed Areas. The exact location of those Seed Bed Areas must be obtained from the Department of Wildlife and Fisheries and any work done under a mineral lease from the State of Louisiana may necessarily be conducted in

conformity with the rules and regulations promulgated by the said Department of Wildlife and Fisheries for Oyster Seed Bed Areas.

NOTE: The State of Louisiana does hereby reserve, and this lease shall be subject to, the imprescriptible right of surface use in the nature of a servitude in favor of the Department of Natural Resources, including its Offices and Commissions, for the sole purpose of implementing, constructing, servicing and maintaining approved coastal zone management and/or restoration projects. Utilization of any and all rights derived under this lease by the mineral lessee, its agents, successors or assigns, shall not interfere with nor hinder the reasonable surface use by the Department of Natural Resources, its Offices or Commissions, as herein above reserved.

Applicant: Noxxe Energy

Bidder	Cash Payment	Price / Acre	Rental	Oil	Gas	Other

SL 17141

SL 17142

LAKE BORGNE
GAS FIELD

LAKE BORGNE

7074

P.O.B.
X = 2,539,491.95
Y = 498,821.63

TR 35042
2,500.00 ± ACS.
NOV., 2002



0' SCALE 3000'

TRACT 35043 - Portion of Block 21, North Lake Borgne Area, St. Bernard Parish, Louisiana

All of the lands now or formerly constituting the beds and bottoms of all water bodies of every nature and description, and all islands and other lands formed by accretion, where allowed by law, or by reliction, and excepting tax adjudicated lands, belonging to the State of Louisiana and not presently under mineral lease on November 13, 2002, situated in St. Bernard Parish, Louisiana, and more particularly described as follows: Beginning at the Northwest corner of Block 21, North Lake Borgne Area, having Coordinates of X = 2,536,250.00 and Y = 529,958.70; thence East 9,000.00 feet to a point having Coordinates of X = 2,545,250.00 and Y = 529,958.70; thence South 9,000.00 feet to a point having Coordinates of X = 2,545,250.00 and Y = 520,958.70; thence West 9,000.00 feet to a point having Coordinates of X = 2,536,250.00 and Y = 520,958.70; thence North 9,000.00 feet to the point of beginning, containing approximately **1,859.50 acres**, all as more particularly outlined on a plat on file in the Office of Mineral Resources, Department of Natural Resources, as provided by the applicant. All bearings, distances and coordinates are based on Louisiana Coordinate System of 1927, (North or South Zone), where applicable.

NOTE: The above description of the Tract nominated for lease has been provided and corrected, where required, exclusively by the nomination party. Any mineral lease selected from this Tract and awarded by the Louisiana State Mineral Board shall be without warranty of any kind, either express, implied, or statutory, including, but not limited to, the implied warranties of merchantability and fitness for a particular purpose. Should the mineral lease awarded by the Louisiana State Mineral Board be subsequently modified, cancelled or abrogated due to the existence of conflicting leases, operating agreements, private claims or other future obligations or conditions which may affect all or any portion of the leased Tract, it shall not relieve the Lessee of the obligation to pay any bonus due thereon to the Louisiana State Mineral Board, nor shall the Louisiana State Mineral Board be obligated to refund any consideration paid by the Lessor prior to such modification, cancellation, or abrogation, including, but not limited to, bonuses, rentals and royalties.

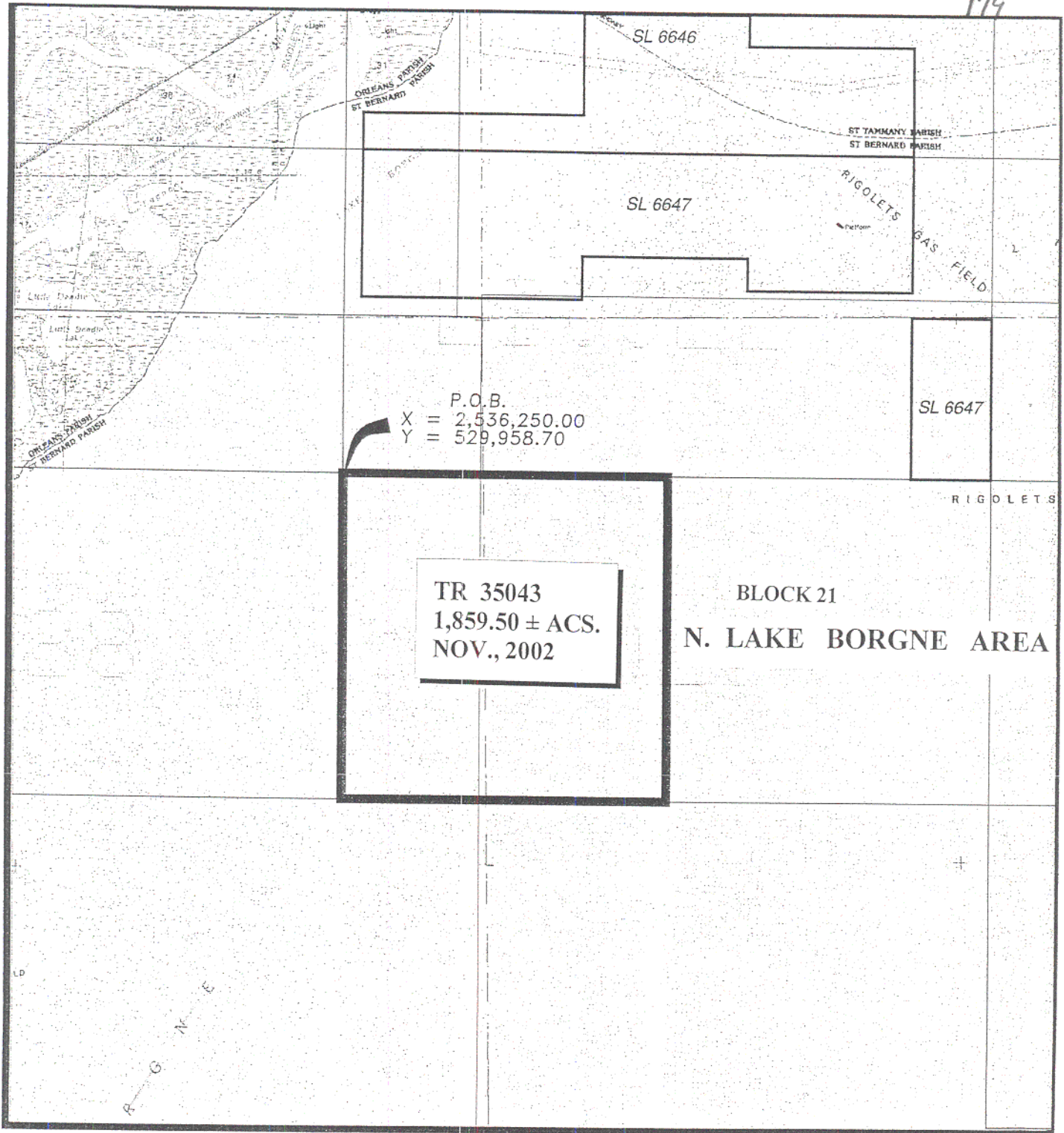
NOTE: The Office of Mineral Resources will require a minimum bonus of \$230 per acre and a minimum royalty of 23%.

NOTE: The Department of Wildlife and Fisheries has designated certain areas in the coastal waters of the State of Louisiana as Oyster Seed Bed Areas. The exact location of those Seed Bed Areas must be obtained from the Department of Wildlife and Fisheries and any work done under a mineral lease from the State of Louisiana may necessarily be conducted in conformity with the rules and regulations promulgated by the said Department of Wildlife and Fisheries for Oyster Seed Bed Areas.

NOTE: The State of Louisiana does hereby reserve, and this lease shall be subject to, the imprescriptible right of surface use in the nature of a servitude in favor of the Department of Natural Resources, including its Offices and Commissions, for the sole purpose of implementing, constructing, servicing and maintaining approved coastal zone management and/or restoration projects. Utilization of any and all rights derived under this lease by the mineral lessee, its agents, successors or assigns, shall not interfere with nor hinder the reasonable surface use by the Department of Natural Resources, its Offices or Commissions, as herein above reserved.

Applicant: Noxxe Energy

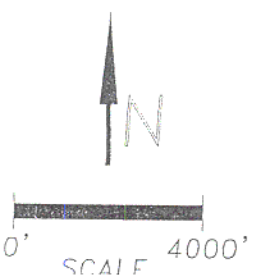
Bidder	Cash Payment	Price / Acre	Rental	Oil	Gas	Other



P.O.B.
 X = 2,536,250.00
 Y = 529,958.70

TR 35043
1,859.50 ± ACS.
NOV., 2002

BLOCK 21
N. LAKE BORGNE AREA



TRACT 35044 - Lake Borgne Area, St. Bernard Parish, Louisiana

All of the lands now or formerly constituting the beds and bottoms of all water bodies of every nature and description, and all islands and other lands formed by accretion, where allowed by law, or by reliction, and excepting tax adjudicated lands, belonging to the State of Louisiana and not presently under mineral lease on November 13, 2002, situated in St. Bernard Parish, Louisiana, and more particularly described as follows: Beginning at a point having Coordinates of X = 2,539,491.95 and Y = 520,958.70; thence East 7,379.03 feet to a point having Coordinates of X = 2,546,870.98 and Y = 520,958.70; thence South 14,758.05 feet to a point having Coordinates of X = 2,546,870.98 and Y = 506,200.65; thence West 7,379.03 feet to a point having Coordinates of X = 2,539,491.95 and Y = 506,200.65; thence North 14,758.05 feet to the point of beginning, containing approximately **2,500.00 acres**, all as more particularly outlined on a plat on file in the Office of Mineral Resources, Department of Natural Resources, as provided by the applicant. All bearings, distances and coordinates are based on Louisiana Coordinate System of 1927, (North or South Zone), where applicable.

NOTE: The above description of the Tract nominated for lease has been provided and corrected, where required, exclusively by the nomination party. Any mineral lease selected from this Tract and awarded by the Louisiana State Mineral Board shall be without warranty of any kind, either express, implied, or statutory, including, but not limited to, the implied warranties of merchantability and fitness for a particular purpose. Should the mineral lease awarded by the Louisiana State Mineral Board be subsequently modified, cancelled or abrogated due to the existence of conflicting leases, operating agreements, private claims or other future obligations or conditions which may affect all or any portion of the leased Tract, it shall not relieve the Lessee of the obligation to pay any bonus due thereon to the Louisiana State Mineral Board, nor shall the Louisiana State Mineral Board be obligated to refund any consideration paid by the Lessor prior to such modification, cancellation, or abrogation, including, but not limited to, bonuses, rentals and royalties.

NOTE: The Office of Mineral Resources will require a minimum bonus of \$230 per acre and a minimum royalty of 23%.

NOTE: The Department of Wildlife and Fisheries has designated certain areas in the coastal waters of the State of Louisiana as Oyster Seed Bed Areas. The exact location of those Seed Bed Areas must be obtained from the Department of Wildlife and Fisheries and any work done under a mineral lease from the State of Louisiana may necessarily be conducted in conformity with the rules and regulations promulgated by the said Department of Wildlife and Fisheries for Oyster Seed Bed Areas.

NOTE: The State of Louisiana does hereby reserve, and this lease shall be subject to, the imprescriptible right of surface use in the nature of a servitude in favor of the Department of Natural Resources, including its Offices and Commissions, for the sole purpose of implementing, constructing, servicing and maintaining approved coastal zone management and/or restoration projects. Utilization of any and all rights derived under this lease by the mineral lessee, its agents, successors or assigns, shall not interfere with nor hinder the reasonable surface use by the Department of Natural Resources, its Offices or Commissions, as herein above reserved.

Applicant: Noxxe Energy

Bidder	Cash Payment	Price / Acre	Rental	Oil	Gas	Other

P.O.B.
X = 2,539,491.95
Y = 520,958.70

LAKE BORGNE

TR 35044
2,500.00 ± ACS.
NOV., 2002



0' SCALE 3000'

TRACT 35045 - Portion of Block 21, North Lake Borgne Area, St. Bernard Parish, Louisiana

All of the lands now or formerly constituting the beds and bottoms of all water bodies of every nature and description, and all islands and other lands formed by accretion, where allowed by law, or by reliction, and excepting tax adjudicated lands, belonging to the State of Louisiana and not presently under mineral lease on November 13, 2002, situated in St. Bernard Parish, Louisiana, and more particularly described as follows: Beginning at the Northeast corner of Block 21, North Lake Borgne Area, having Coordinates of X = 2,554,250.00 and Y = 529,958.70; thence South 9,000.00 feet to a point having Coordinates of X = 2,554,250.00 and Y = 520,958.70; thence West 9,000.00 feet to a point having Coordinates of X = 2,545,250.00 and Y = 520,958.70; thence North 9,000.00 feet to a point having Coordinates of X = 2,545,250.00 and Y = 529,958.70; thence East 9,000.00 feet to the point of beginning, containing approximately **1,859.50 acres**, all as more particularly outlined on a plat on file in the Office of Mineral Resources, Department of Natural Resources, as provided by the applicant. All bearings, distances and coordinates are based on Louisiana Coordinate System of 1927, (North or South Zone), where applicable.

NOTE: The above description of the Tract nominated for lease has been provided and corrected, where required, exclusively by the nomination party. Any mineral lease selected from this Tract and awarded by the Louisiana State Mineral Board shall be without warranty of any kind, either express, implied, or statutory, including, but not limited to, the implied warranties of merchantability and fitness for a particular purpose. Should the mineral lease awarded by the Louisiana State Mineral Board be subsequently modified, cancelled or abrogated due to the existence of conflicting leases, operating agreements, private claims or other future obligations or conditions which may affect all or any portion of the leased Tract, it shall not relieve the Lessee of the obligation to pay any bonus due thereon to the Louisiana State Mineral Board, nor shall the Louisiana State Mineral Board be obligated to refund any consideration paid by the Lessor prior to such modification, cancellation, or abrogation, including, but not limited to, bonuses, rentals and royalties.

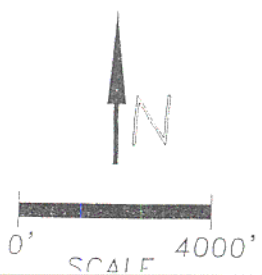
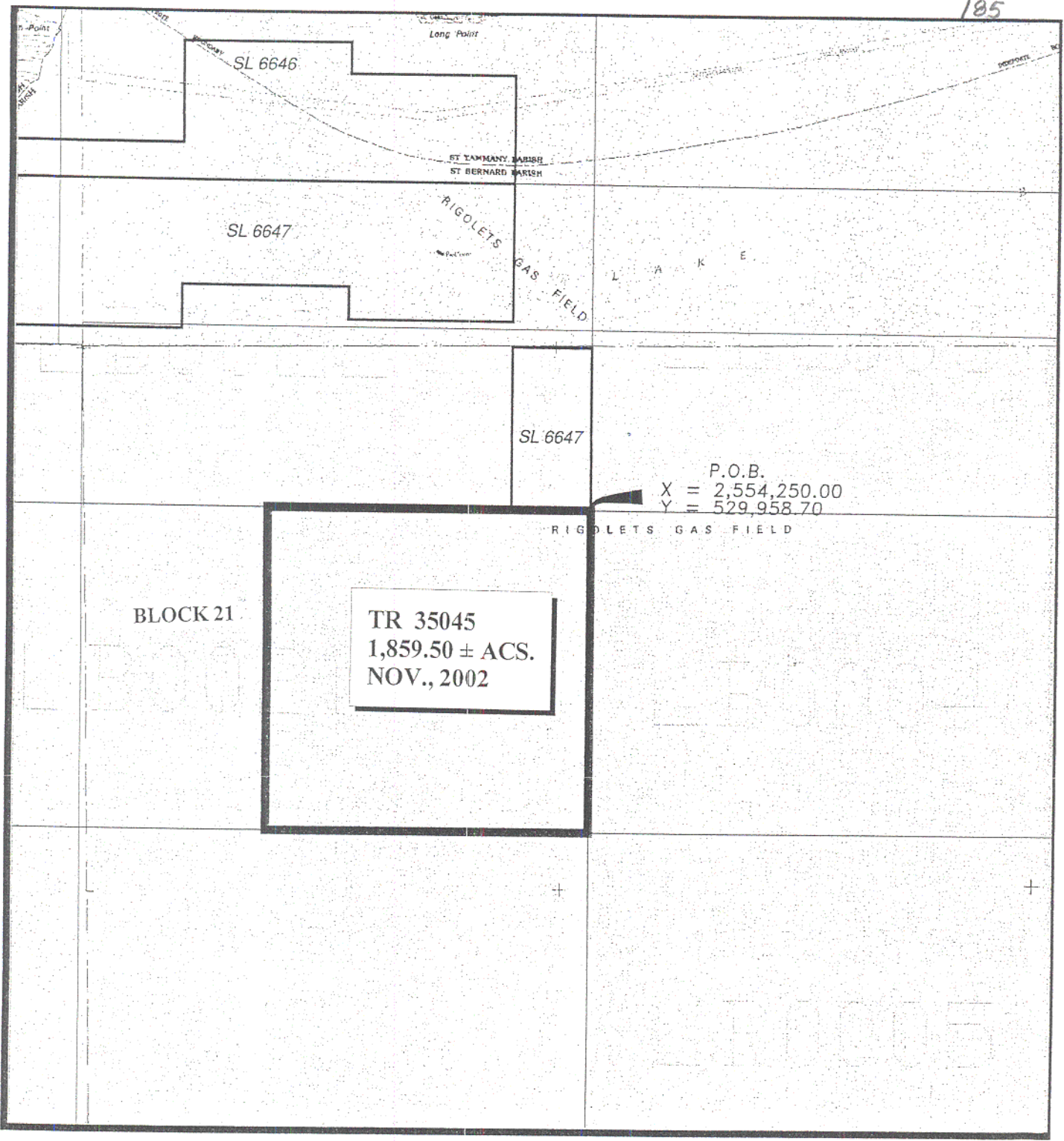
NOTE: The Office of Mineral Resources will require a minimum bonus of \$230 per acre and a minimum royalty of 23%.

NOTE: The Department of Wildlife and Fisheries has designated certain areas in the coastal waters of the State of Louisiana as Oyster Seed Bed Areas. The exact location of those Seed Bed Areas must be obtained from the Department of Wildlife and Fisheries and any work done under a mineral lease from the State of Louisiana may necessarily be conducted in conformity with the rules and regulations promulgated by the said Department of Wildlife and Fisheries for Oyster Seed Bed Areas.

NOTE: The State of Louisiana does hereby reserve, and this lease shall be subject to, the imprescriptible right of surface use in the nature of a servitude in favor of the Department of Natural Resources, including its Offices and Commissions, for the sole purpose of implementing, constructing, servicing and maintaining approved coastal zone management and/or restoration projects. Utilization of any and all rights derived under this lease by the mineral lessee, its agents, successors or assigns, shall not interfere with nor hinder the reasonable surface use by the Department of Natural Resources, its Offices or Commissions, as herein above reserved.

Applicant: Noxxe Energy

Bidder	Cash Payment	Price / Acre	Rental	Oil	Gas	Other



ST. BERNARD PARISH , LA

North Lake Borgne Area

TRACT 35046 - Lake Borgne Area, St. Bernard Parish, Louisiana

All of the lands now or formerly constituting the beds and bottoms of all water bodies of every nature and description, and all islands and other lands formed by accretion, where allowed by law, or by reliction, and excepting tax adjudicated lands, belonging to the State of Louisiana and not presently under mineral lease on November 13, 2002, situated in St. Bernard Parish, Louisiana, and more particularly described as follows: Beginning at a point having Coordinates of X = 2,554,250.00 and Y = 520,958.70; thence South 14,758.05 feet to a point having Coordinates of X = 2,554,250.00 and Y = 506,200.65; thence West 7,379.02 feet to a point having Coordinates of X = 2,546,870.98 and Y = 506,200.65; thence North 14,758.05 feet to a point having Coordinates of X = 2,546,870.98 and Y = 520,958.70; thence East 7,379.02 feet to the point of beginning, containing approximately **2,500.00 acres**, all as more particularly outlined on a plat on file in the Office of Mineral Resources, Department of Natural Resources, as provided by the applicant. All bearings, distances and coordinates are based on Louisiana Coordinate System of 1927, (North or South Zone), where applicable.

NOTE: The above description of the Tract nominated for lease has been provided and corrected, where required, exclusively by the nomination party. Any mineral lease selected from this Tract and awarded by the Louisiana State Mineral Board shall be without warranty of any kind, either express, implied, or statutory, including, but not limited to, the implied warranties of merchantability and fitness for a particular purpose. Should the mineral lease awarded by the Louisiana State Mineral Board be subsequently modified, cancelled or abrogated due to the existence of conflicting leases, operating agreements, private claims or other future obligations or conditions which may affect all or any portion of the leased Tract, it shall not relieve the Lessee of the obligation to pay any bonus due thereon to the Louisiana State Mineral Board, nor shall the Louisiana State Mineral Board be obligated to refund any consideration paid by the Lessor prior to such modification, cancellation, or abrogation, including, but not limited to, bonuses, rentals and royalties.

NOTE: The Office of Mineral Resources will require a minimum bonus of \$230 per acre and a minimum royalty of 23%.

NOTE: The Department of Wildlife and Fisheries has designated certain areas in the coastal waters of the State of Louisiana as Oyster Seed Bed Areas. The exact location of those Seed Bed Areas must be obtained from the Department of Wildlife and Fisheries and any work done under a mineral lease from the State of Louisiana may necessarily be conducted in conformity with the rules and regulations promulgated by the said Department of Wildlife and Fisheries for Oyster Seed Bed Areas.

NOTE: The State of Louisiana does hereby reserve, and this lease shall be subject to, the imprescriptible right of surface use in the nature of a servitude in favor of the Department of Natural Resources, including its Offices and Commissions, for the sole purpose of implementing, constructing, servicing and maintaining approved coastal zone management and/or restoration projects. Utilization of any and all rights derived under this lease by the mineral lessee, its agents, successors or assigns, shall not interfere with nor hinder the reasonable surface use by the Department of Natural Resources, its Offices or Commissions, as herein above reserved.

Applicant: Noxxe Energy

Bidder	Cash Payment	Price / Acre	Rental	Oil	Gas	Other

188

P.O.B.
X = 2,554,250.00
Y = 520,958.70

+

LAKE BORGNE

TR 35046
2,500.00 ± ACS.
NOV., 2002

B



0' SCALE 3000'

TRACT 35047 - Portion of Block 19, Chandeleur Sound Area, Addition, Revised, St. Bernard Parish, Louisiana

All of the lands now or formerly constituting the beds and bottoms of all water bodies of every nature and description, and all islands and other lands formed by accretion, where allowed by law, or by reliction, and excepting tax adjudicated lands, belonging to the State of Louisiana and not presently under mineral lease on November 13, 2002, situated in St. Bernard Parish, Louisiana, and more particularly described as follows: Beginning at the Northeast corner of Block 19, Chandeleur Sound Area, Addition, Revised, having Coordinates of X = 2,679,600.00 and Y = 528,830.00; thence South 14,750.00 feet along the East line of said Block 19 to its Southeast corner having Coordinates of X = 2,679,600.00 and Y = 514,080.00; thence West 7,375.00 feet along the South line of said Block 19 to a point having Coordinates of X = 2,672,225.00 and Y = 514,080.00; thence North 14,750.00 feet to a point on the North line of said Block 19 having Coordinates of X = 2,672,225.00 and Y = 528,830.00; thence East 7,375.00 feet along the North line of said Block 19 to the point of beginning, containing approximately **2,449 acres**, all as more particularly outlined on a plat on file in the Office of Mineral Resources, Department of Natural Resources, as provided by the applicant. All bearings, distances and coordinates are based on Louisiana Coordinate System of 1927, (North or South Zone), where applicable.

NOTE: The above description of the Tract nominated for lease has been provided and corrected, where required, exclusively by the nomination party. Any mineral lease selected from this Tract and awarded by the Louisiana State Mineral Board shall be without warranty of any kind, either express, implied, or statutory, including, but not limited to, the implied warranties of merchantability and fitness for a particular purpose. Should the mineral lease awarded by the Louisiana State Mineral Board be subsequently modified, cancelled or abrogated due to the existence of conflicting leases, operating agreements, private claims or other future obligations or conditions which may affect all or any portion of the leased Tract, it shall not relieve the Lessee of the obligation to pay any bonus due thereon to the Louisiana State Mineral Board, nor shall the Louisiana State Mineral Board be obligated to refund any consideration paid by the Lessor prior to such modification, cancellation, or abrogation, including, but not limited to, bonuses, rentals and royalties.

NOTE: The Office of Mineral Resources will require a minimum bonus of \$130 per acre and a minimum royalty of 21%.

NOTE: The Department of Wildlife and Fisheries has designated certain areas in the coastal waters of the State of Louisiana as Oyster Seed Bed Areas. The exact location of those Seed Bed Areas must be obtained from the Department of Wildlife and Fisheries and any work done under a mineral lease from the State of Louisiana may necessarily be conducted in

conformity with the rules and regulations promulgated by the said Department of Wildlife and Fisheries for Oyster Seed Bed Areas.

NOTE: The State of Louisiana does hereby reserve, and this lease shall be subject to, the imprescriptible right of surface use in the nature of a servitude in favor of the Department of Natural Resources, including its Offices and Commissions, for the sole purpose of implementing, constructing, servicing and maintaining approved coastal zone management and/or restoration projects. Utilization of any and all rights derived under this lease by the mineral lessee, its agents, successors or assigns, shall not interfere with nor hinder the reasonable surface use by the Department of Natural Resources, its Offices or Commissions, as herein above reserved.

Applicant: Crawford Energy

Bidder	Cash Payment	Price / Acre	Rental	Oil	Gas	Other

EXHIBIT B

191

BIK. 7

BIK. 8

BIK. 9

OYSTER
BAY

16

17

P. O. B.
X=2,679,600.00
Y= 528,830.00

BIK. 20

BIK. 19

TR 35047
2,449 ± ACS.
NOV., 2002

BIK. 18

SL
17386

BIK. 25

CHANDELEUR SOUND AREA ADDITION, REVISED

SL 17387

GULF OF MEXICO

BIK. 27

BIK. 26

NAD 27
LAMBERT LA. SOUTH ZONE

St. Bernard Parish, Louisiana

4000' 0' 4000'

TRACT 35048 - Portion of Block 26, Chandeleur Sound Area, Addition, Revised, St. Bernard Parish, Louisiana

All of the lands now or formerly constituting the beds and bottoms of all water bodies of every nature and description, and all islands and other lands formed by accretion, where allowed by law, or by reliction, and excepting tax adjudicated lands, belonging to the State of Louisiana and not presently under mineral lease on November 13, 2002, situated in St. Bernard Parish, Louisiana, and more particularly described as follows: Beginning at the Southeast corner of Block 26, Chandeleur Sound Area, Addition, Revised, having Coordinates of X = 2,679,600.00 and Y = 499,330.00; thence West 7,375.00 feet along the South line of said Block 26 to a point having Coordinates of X = 2,672,225.00 and Y = 499,330.00; thence North 14,750.00 feet to a point on the North line of said Block 26 having Coordinates of X = 2,672,225.00 and Y = 514,080.00; thence East 7,375.00 feet along the North line of said Block 26 to its Northeast corner having Coordinates of X = 2,679,600.00 and Y = 514,080.00; thence South 14,750.00 feet along the East line of said Block 26 to the point of beginning, containing approximately **1,761 acres**, all as more particularly outlined on a plat on file in the Office of Mineral Resources, Department of Natural Resources, as provided by the applicant. All bearings, distances and coordinates are based on Louisiana Coordinate System of 1927, (North or South Zone), where applicable.

NOTE: The above description of the Tract nominated for lease has been provided and corrected, where required, exclusively by the nomination party. Any mineral lease selected from this Tract and awarded by the Louisiana State Mineral Board shall be without warranty of any kind, either express, implied, or statutory, including, but not limited to, the implied warranties of merchantability and fitness for a particular purpose. Should the mineral lease awarded by the Louisiana State Mineral Board be subsequently modified, cancelled or abrogated due to the existence of conflicting leases, operating agreements, private claims or other future obligations or conditions which may affect all or any portion of the leased Tract, it shall not relieve the Lessee of the obligation to pay any bonus due thereon to the Louisiana State Mineral Board, nor shall the Louisiana State Mineral Board be obligated to refund any consideration paid by the Lessor prior to such modification, cancellation, or abrogation, including, but not limited to, bonuses, rentals and royalties.

NOTE: The Office of Mineral Resources will require a minimum bonus of \$130 per acre and a minimum royalty of 21%.

NOTE: The Department of Wildlife and Fisheries has designated certain areas in the coastal waters of the State of Louisiana as Oyster Seed Bed Areas. The exact location of those Seed Bed Areas must be obtained from the Department of Wildlife and Fisheries and any work done under a mineral lease from the State of Louisiana may necessarily be conducted in

conformity with the rules and regulations promulgated by the said Department of Wildlife and Fisheries for Oyster Seed Bed Areas.

NOTE: The State of Louisiana does hereby reserve, and this lease shall be subject to, the imprescriptible right of surface use in the nature of a servitude in favor of the Department of Natural Resources, including its Offices and Commissions, for the sole purpose of implementing, constructing, servicing and maintaining approved coastal zone management and/or restoration projects. Utilization of any and all rights derived under this lease by the mineral lessee, its agents, successors or assigns, shall not interfere with nor hinder the reasonable surface use by the Department of Natural Resources, its Offices or Commissions, as herein above reserved.

Applicant: Crawford Energy

Bidder	Cash Payment	Price / Acre	Rental	Oil	Gas	Other

EXHIBIT B

1944

BIK. 20

BIK. 19

BIK. 18

BIK. 25

BIK. 26

BIK. 27

BIK. 44

CHANDELEUR SOUND AREA ADDITION, REVISED

GULF OF MEXICO

BIK. 42

BIK. 43

TR 35048
1,761 ± ACS.
NOV., 2002

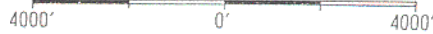
P. O. B.
X=2,679,600.00
Y= 499,330.00

SL 17386

SL 17387

NAD 27 LAMBERT L.A. SOUTH ZONE

St. Bernard Parish, Louisiana



TRACT 35049 - Portion of Block 43, Chandeleur Sound Area, Addition, Revised, St. Bernard Parish, Louisiana

All of the lands now or formerly constituting the beds and bottoms of all water bodies of every nature and description, and all islands and other lands formed by accretion, where allowed by law, or by reliction, and excepting tax adjudicated lands, belonging to the State of Louisiana and not presently under mineral lease on November 13, 2002, situated in St. Bernard Parish, Louisiana, and more particularly described as follows: Beginning at the Northeast corner of Block 43, Chandeleur Sound Area, Addition, Revised, having Coordinates of X = 2,679,600.00 and Y = 499,330.00; thence South 14,750.00 feet along the East line of said Block 43 to its Southeast corner having Coordinates of X = 2,679,600.00 and Y = 484,580.00; thence West 7,375.00 feet along the South line of said Block 43 to a point having Coordinates of X = 2,672,225.00 and Y = 484,580.00; thence North 14,750.00 feet to a point on the North line of said Block 43 having Coordinates of X = 2,672,225.00 and Y = 499,330.00; thence East 7,375.00 feet along the North line of said Block 43 to the point of beginning, containing approximately **2,459 acres**, all as more particularly outlined on a plat on file in the Office of Mineral Resources, Department of Natural Resources, as provided by the applicant. All bearings, distances and coordinates are based on Louisiana Coordinate System of 1927, (North or South Zone), where applicable.

NOTE: The above description of the Tract nominated for lease has been provided and corrected, where required, exclusively by the nomination party. Any mineral lease selected from this Tract and awarded by the Louisiana State Mineral Board shall be without warranty of any kind, either express, implied, or statutory, including, but not limited to, the implied warranties of merchantability and fitness for a particular purpose. Should the mineral lease awarded by the Louisiana State Mineral Board be subsequently modified, cancelled or abrogated due to the existence of conflicting leases, operating agreements, private claims or other future obligations or conditions which may affect all or any portion of the leased Tract, it shall not relieve the Lessee of the obligation to pay any bonus due thereon to the Louisiana State Mineral Board, nor shall the Louisiana State Mineral Board be obligated to refund any consideration paid by the Lessor prior to such modification, cancellation, or abrogation, including, but not limited to, bonuses, rentals and royalties.

NOTE: The Office of Mineral Resources will require a minimum bonus of \$130 per acre and a minimum royalty of 21%.

NOTE: The Department of Wildlife and Fisheries has designated certain areas in the coastal waters of the State of Louisiana as Oyster Seed Bed Areas. The exact location of those Seed Bed Areas must be obtained from the Department of Wildlife and Fisheries and any work done under a mineral lease from the State of Louisiana may necessarily be conducted in

conformity with the rules and regulations promulgated by the said Department of Wildlife and Fisheries for Oyster Seed Bed Areas.

NOTE: The State of Louisiana does hereby reserve, and this lease shall be subject to, the imprescriptible right of surface use in the nature of a servitude in favor of the Department of Natural Resources, including its Offices and Commissions, for the sole purpose of implementing, constructing, servicing and maintaining approved coastal zone management and/or restoration projects. Utilization of any and all rights derived under this lease by the mineral lessee, its agents, successors or assigns, shall not interfere with nor hinder the reasonable surface use by the Department of Natural Resources, its Offices or Commissions, as herein above reserved.

Applicant: Crawford Energy

Bidder	Cash Payment	Price / Acre	Rental	Oil	Gas	Other

EXHIBIT B

197

BIK. 25

BIK. 26

BIK. 27

BIK. 44

BIK. 43

BIK. 42

P. O. B.
X=2,679,600.00
Y=499,330.00

TR 35049
2,459 ± ACS.
NOV., 2002

BIK. 49

CHANDELEUR SOUND AREA ADDITION, REVISED

BIK. 51

GULF OF MEXICO

BIK. 50

St. Bernard Parish, Louisiana

4000' 0' 4000'

NAD 27 LAMBERT LA. SOUTH ZONE

TRACT 35050 - Portion of Block 50, Chandeleur Sound Area, Addition, Revised, St. Bernard Parish, Louisiana

All of the lands now or formerly constituting the beds and bottoms of all water bodies of every nature and description, and all islands and other lands formed by accretion, where allowed by law, or by reliction, and excepting tax adjudicated lands, belonging to the State of Louisiana and not presently under mineral lease on November 13, 2002, situated in St. Bernard Parish, Louisiana, and more particularly described as follows: Beginning at the Southeast corner of Block 50, Chandeleur Sound Area, Addition, Revised, having Coordinates of X = 2,679,600.00 and Y = 469,830.00; thence West 7,375.00 feet along the South line of said Block 50 to a point having Coordinates of X = 2,672,225.00 and Y = 469,830.00; thence North 14,750.00 feet to a point on the North line of said Block 50 having Coordinates of X = 2,672,225.00 and Y = 484,580.00; thence East 7,375.00 feet along the North line of said Block 50 to its Northeast corner having Coordinates of X = 2,679,600.00 and Y = 484,580.00; thence South 14,750.00 feet along the East line of said Block 50 to the point of beginning, containing approximately **2,448 acres**, all as more particularly outlined on a plat on file in the Office of Mineral Resources, Department of Natural Resources, as provided by the applicant. All bearings, distances and coordinates are based on Louisiana Coordinate System of 1927, (North or South Zone), where applicable.

NOTE: The above description of the Tract nominated for lease has been provided and corrected, where required, exclusively by the nomination party. Any mineral lease selected from this Tract and awarded by the Louisiana State Mineral Board shall be without warranty of any kind, either express, implied, or statutory, including, but not limited to, the implied warranties of merchantability and fitness for a particular purpose. Should the mineral lease awarded by the Louisiana State Mineral Board be subsequently modified, cancelled or abrogated due to the existence of conflicting leases, operating agreements, private claims or other future obligations or conditions which may affect all or any portion of the leased Tract, it shall not relieve the Lessee of the obligation to pay any bonus due thereon to the Louisiana State Mineral Board, nor shall the Louisiana State Mineral Board be obligated to refund any consideration paid by the Lessor prior to such modification, cancellation, or abrogation, including, but not limited to, bonuses, rentals and royalties.

NOTE: The Office of Mineral Resources will require a minimum bonus of \$130 per acre and a minimum royalty of 21%.

NOTE: The Department of Wildlife and Fisheries has designated certain areas in the coastal waters of the State of Louisiana as Oyster Seed Bed Areas. The exact location of those Seed Bed Areas must be obtained from the Department of Wildlife and Fisheries and any work done under a mineral lease from the State of Louisiana may necessarily be conducted in

conformity with the rules and regulations promulgated by the said Department of Wildlife and Fisheries for Oyster Seed Bed Areas.

NOTE: The State of Louisiana does hereby reserve, and this lease shall be subject to, the imprescriptible right of surface use in the nature of a servitude in favor of the Department of Natural Resources, including its Offices and Commissions, for the sole purpose of implementing, constructing, servicing and maintaining approved coastal zone management and/or restoration projects. Utilization of any and all rights derived under this lease by the mineral lessee, its agents, successors or assigns, shall not interfere with nor hinder the reasonable surface use by the Department of Natural Resources, its Offices or Commissions, as herein above reserved.

Applicant: Crawford Energy

Bidder	Cash Payment	Price / Acre	Rental	Oil	Gas	Other

200

BIK. 44

BIK. 43

BIK. 42

BIK. 49

BIK. 50

TR 35050
2,448 ± ACS.
NOV., 2002

BIK. 51

CHANDELEUR SOUND AREA,
ADDITION, REVISED

P. O. B.
X=2,679,600.00
Y= 469,830.00

CHANDELEUR SOUND AREA

BIK. 3

BIK. 4

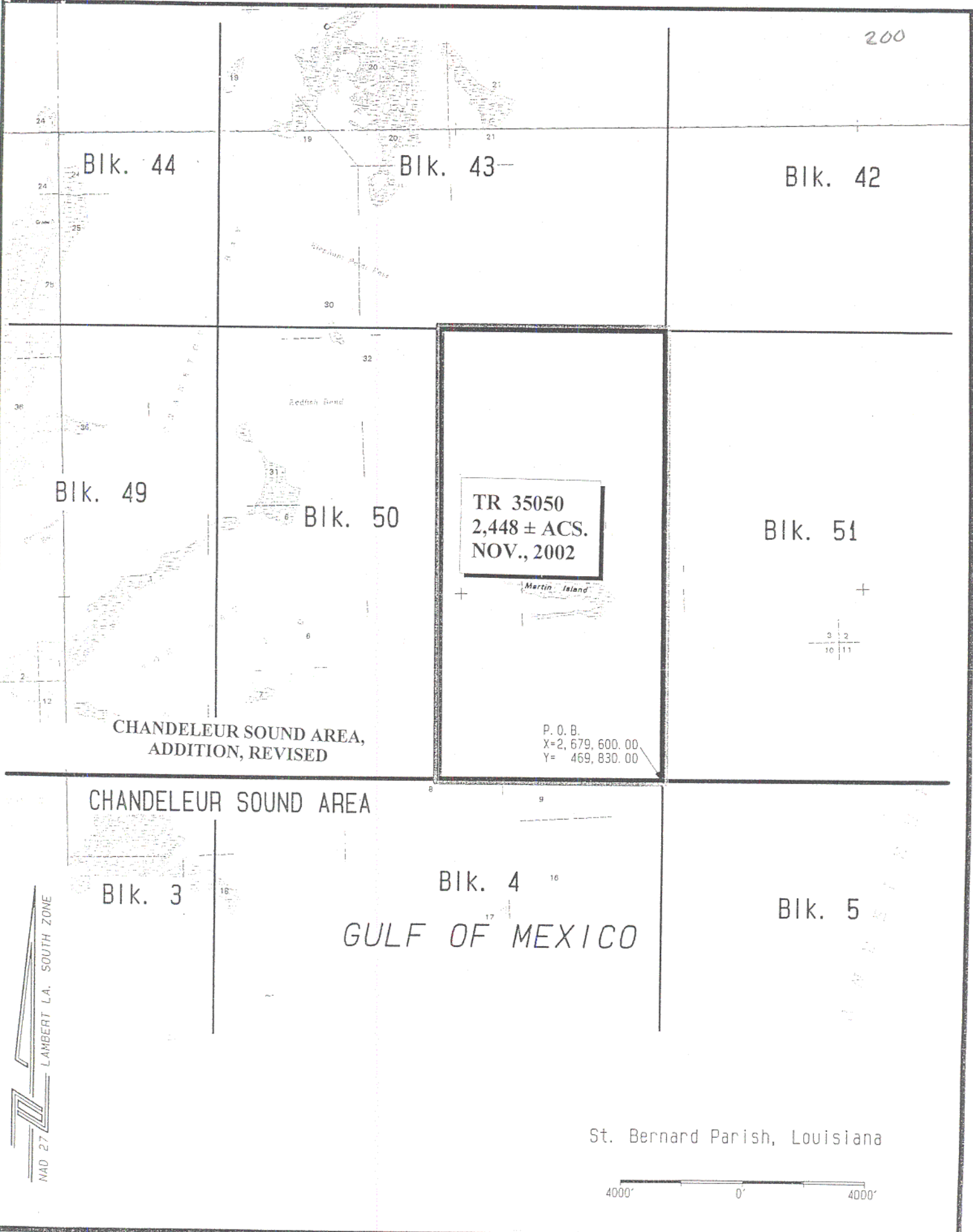
BIK. 5

GULF OF MEXICO

St. Bernard Parish, Louisiana



NAD 27 LAMBERT L.A. SOUTH ZONE



TRACT 35051 - Portion of Block 49, Chandeleur Sound Area, Addition, Revised, St. Bernard Parish, Louisiana

All of the lands now or formerly constituting the beds and bottoms of all water bodies of every nature and description, and all islands and other lands formed by accretion, where allowed by law, or by reliction, and excepting tax adjudicated lands, belonging to the State of Louisiana and not presently under mineral lease on November 13, 2002, situated in St. Bernard Parish, Louisiana, and more particularly described as follows: Beginning at the Southeast corner of Block 49, Chandeleur Sound Area, Addition, Revised, having Coordinates of X = 2,664,850.00 and Y = 469,830.00; thence West 7,375.00 feet along the South line of said Block 49 to a point having Coordinates of X = 2,657,475.00 and Y = 469,830.00; thence North 7,375.00 feet to a point having Coordinates of X = 2,657,475.00 and Y = 477,205.00; thence East 7,375.00 feet to a point on the East line of said Block 49 having Coordinates of X = 2,664,850.00 and Y = 477,205.00; thence South 7,375.00 feet along the East line of said Block 49 to the point of beginning, containing approximately **1,021 acres**, all as more particularly outlined on a plat on file in the Office of Mineral Resources, Department of Natural Resources, as provided by the applicant. All bearings, distances and coordinates are based on Louisiana Coordinate System of 1927, (North or South Zone), where applicable.

NOTE: The above description of the Tract nominated for lease has been provided and corrected, where required, exclusively by the nomination party. Any mineral lease selected from this Tract and awarded by the Louisiana State Mineral Board shall be without warranty of any kind, either express, implied, or statutory, including, but not limited to, the implied warranties of merchantability and fitness for a particular purpose. Should the mineral lease awarded by the Louisiana State Mineral Board be subsequently modified, cancelled or abrogated due to the existence of conflicting leases, operating agreements, private claims or other future obligations or conditions which may affect all or any portion of the leased Tract, it shall not relieve the Lessee of the obligation to pay any bonus due thereon to the Louisiana State Mineral Board, nor shall the Louisiana State Mineral Board be obligated to refund any consideration paid by the Lessor prior to such modification, cancellation, or abrogation, including, but not limited to, bonuses, rentals and royalties.

NOTE: The Office of Mineral Resources will require a minimum bonus of \$130 per acre and a minimum royalty of 21%.

NOTE: The Department of Wildlife and Fisheries has designated certain areas in the coastal waters of the State of Louisiana as Oyster Seed Bed Areas. The exact location of those Seed Bed Areas must be obtained from the Department of Wildlife and Fisheries and any work done under a mineral lease from the State of Louisiana may necessarily be conducted in

conformity with the rules and regulations promulgated by the said Department of Wildlife and Fisheries for Oyster Seed Bed Areas.

NOTE: The State of Louisiana does hereby reserve, and this lease shall be subject to, the imprescriptible right of surface use in the nature of a servitude in favor of the Department of Natural Resources, including its Offices and Commissions, for the sole purpose of implementing, constructing, servicing and maintaining approved coastal zone management and/or restoration projects. Utilization of any and all rights derived under this lease by the mineral lessee, its agents, successors or assigns, shall not interfere with nor hinder the reasonable surface use by the Department of Natural Resources, its Offices or Commissions, as herein above reserved.

Applicant: Crawford Energy

Bidder	Cash Payment	Price / Acre	Rental	Oil	Gas	Other

EXHIBIT B

203

BIK. 44

BIK. 43

BIK. 49

BIK. 50

TR 35051
1,021 ± ACS.
NOV., 2002

CHANDELEUR SOUND AREA ADDITION, REVISED

CHANDELEUR SOUND AREA

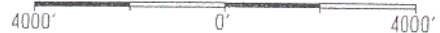
P. O. B.
X=2,664,850.00
Y= 469,830.00

GULF OF MEXICO

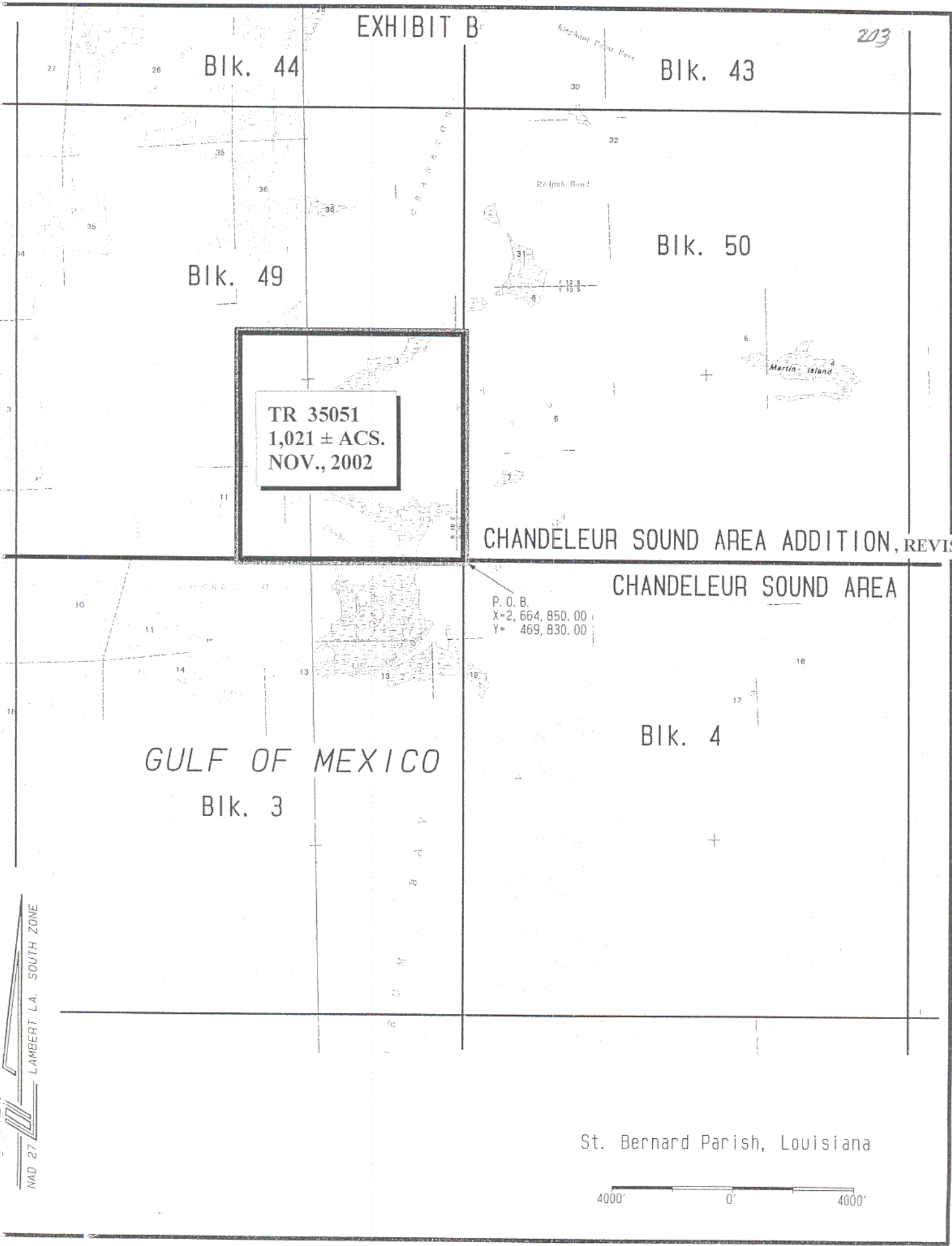
BIK. 3

BIK. 4

St. Bernard Parish, Louisiana



NAD 27 LAMBERT L.A. SOUTH ZONE



TRACT 35052 - Portion of Block 50, Chandeleur Sound Area, Addition, Revised, St. Bernard Parish, Louisiana

All of the lands now or formerly constituting the beds and bottoms of all water bodies of every nature and description, and all islands and other lands formed by accretion, where allowed by law, or by reliction, and excepting tax adjudicated lands, belonging to the State of Louisiana and not presently under mineral lease on November 13, 2002, situated in St. Bernard Parish, Louisiana, and more particularly described as follows: Beginning at the Southwest corner of Block 50, Chandeleur Sound Area, Addition, Revised, having Coordinates of X = 2,664,850.00 and Y = 469,830.00; thence North 7,375.00 feet along the West line of said Block 50 to a point having Coordinates of X = 2,664,850.00 and Y = 477,205.00; thence East 7,375.00 feet to a point having Coordinates of X = 2,672,225.00 and Y = 477,205.00; thence South 7,375.00 feet to a point on the South line of said Block 50 having Coordinates of X = 2,672,225.00 and Y = 469,830.00; thence West 7,375.00 feet along the South line of said Block 50 to the point of beginning, containing approximately **1,245 acres**, all as more particularly outlined on a plat on file in the Office of Mineral Resources, Department of Natural Resources, as provided by the applicant. All bearings, distances and coordinates are based on Louisiana Coordinate System of 1927, (North or South Zone), where applicable.

NOTE: The above description of the Tract nominated for lease has been provided and corrected, where required, exclusively by the nomination party. Any mineral lease selected from this Tract and awarded by the Louisiana State Mineral Board shall be without warranty of any kind, either express, implied, or statutory, including, but not limited to, the implied warranties of merchantability and fitness for a particular purpose. Should the mineral lease awarded by the Louisiana State Mineral Board be subsequently modified, cancelled or abrogated due to the existence of conflicting leases, operating agreements, private claims or other future obligations or conditions which may affect all or any portion of the leased Tract, it shall not relieve the Lessee of the obligation to pay any bonus due thereon to the Louisiana State Mineral Board, nor shall the Louisiana State Mineral Board be obligated to refund any consideration paid by the Lessor prior to such modification, cancellation, or abrogation, including, but not limited to, bonuses, rentals and royalties.

NOTE: The Office of Mineral Resources will require a minimum bonus of \$130 per acre and a minimum royalty of 21%.

NOTE: The Department of Wildlife and Fisheries has designated certain areas in the coastal waters of the State of Louisiana as Oyster Seed Bed Areas. The exact location of those Seed Bed Areas must be obtained from the Department of Wildlife and Fisheries and any work done under a mineral lease from the State of Louisiana may necessarily be conducted in

conformity with the rules and regulations promulgated by the said Department of Wildlife and Fisheries for Oyster Seed Bed Areas.

NOTE: The State of Louisiana does hereby reserve, and this lease shall be subject to, the imprescriptible right of surface use in the nature of a servitude in favor of the Department of Natural Resources, including its Offices and Commissions, for the sole purpose of implementing, constructing, servicing and maintaining approved coastal zone management and/or restoration projects. Utilization of any and all rights derived under this lease by the mineral lessee, its agents, successors or assigns, shall not interfere with nor hinder the reasonable surface use by the Department of Natural Resources, its Offices or Commissions, as herein above reserved.

Applicant: Crawford Energy

Bidder	Cash Payment	Price / Acre	Rental	Oil	Gas	Other

206

BIK. 44

BIK. 43

CHANDELEUR SOUND AREA ADDITION, REVISED

BIK. 50

BIK. 49

TR 35052
1,245 ± ACS.
NOV., 2002

CHANDELEUR SOUND AREA

P. O. B.
X= 2,664,850.00
Y= 469,830.00

BIK. 4

BIK. 3

GULF OF MEXICO

St. Bernard Parish, Louisiana



NAD 27 LAMBERT LA. SOUTH ZONE

