

TRACT 35027 - Orleans and St. Bernard Parishes, Louisiana

All of the lands now or formerly constituting the beds and bottoms of all water bodies of every nature and description, and all islands and other lands formed by accretion, where allowed by law, or by reliction, and excepting tax adjudicated lands, belonging to the State of Louisiana and not presently under mineral lease on November 13, 2002, situated in Orleans and St. Bernard Parishes, Louisiana, and more particularly described as follows: Beginning at a point having Coordinates of X = 2,509,975.86 and Y = 511,958.70; thence North 9,000.00 feet to a point on the South line of Block 29, North Lake Borgne Area, having Coordinates of X = 2,509,975.86 and Y = 520,958.70; thence East 8,274.14 feet on the South line of said Block 29 to its Southeast corner, also being the Southwest corner of Block 28, North Lake Borgne Area, having Coordinates of X = 2,518,250.00 and Y = 520,958.70; thence East 6,483.90 feet on the South line of said Block 28 to a point having Coordinates of X = 2,524,733.90 and Y = 520,958.70; thence South 9,000.00 feet to a point having Coordinates of X = 2,524,733.90 and Y = 511,958.70; thence West 14,758.04 feet to the point of beginning, containing approximately **1,370 acres**, all as more particularly outlined on a plat on file in the Office of Mineral Resources, Department of Natural Resources, as provided by the applicant. All bearings, distances and coordinates are based on Louisiana Coordinate System of 1927, (North or South Zone), where applicable.

NOTE: The above description of the Tract nominated for lease has been provided and corrected, where required, exclusively by the nomination party. Any mineral lease selected from this Tract and awarded by the Louisiana State Mineral Board shall be without warranty of any kind, either express, implied, or statutory, including, but not limited to, the implied warranties of merchantability and fitness for a particular purpose. Should the mineral lease awarded by the Louisiana State Mineral Board be subsequently modified, cancelled or abrogated due to the existence of conflicting leases, operating agreements, private claims or other future obligations or conditions which may affect all or any portion of the leased Tract, it shall not relieve the Lessee of the obligation to pay any bonus due thereon to the Louisiana State Mineral Board, nor shall the Louisiana State Mineral Board be obligated to refund any consideration paid by the Lessor prior to such modification, cancellation, or abrogation, including, but not limited to, bonuses, rentals and royalties.

NOTE: The Office of Mineral Resources will require a minimum bonus of \$230 per acre and a minimum royalty of 23%.

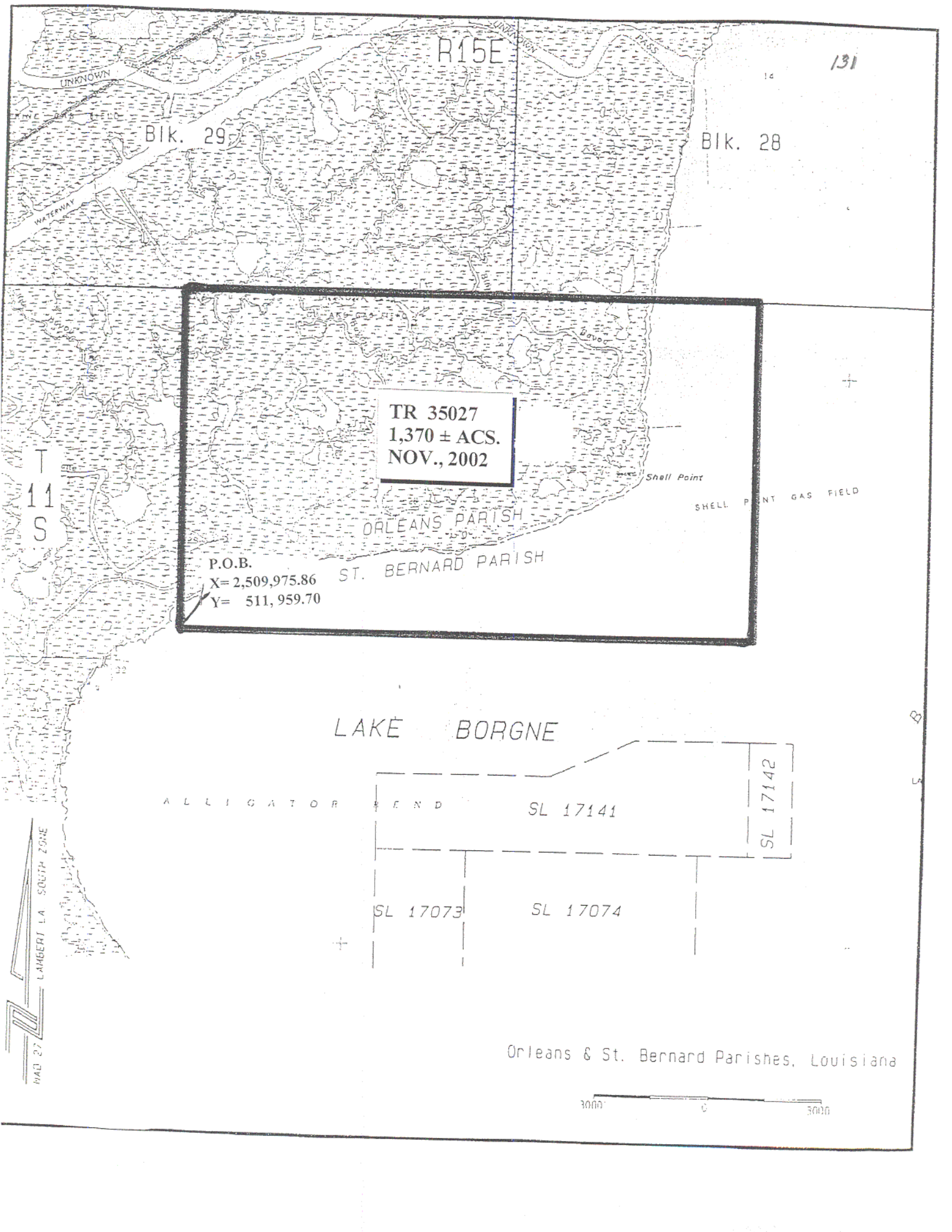
NOTE: The Department of Wildlife and Fisheries has designated certain areas in the coastal waters of the State of Louisiana as Oyster Seed Bed Areas. The exact location of those Seed Bed Areas must be obtained from the Department of Wildlife and Fisheries and any work done under a mineral lease from the State of Louisiana may necessarily be conducted in

conformity with the rules and regulations promulgated by the said Department of Wildlife and Fisheries for Oyster Seed Bed Areas.

NOTE: The State of Louisiana does hereby reserve, and this lease shall be subject to, the imprescriptible right of surface use in the nature of a servitude in favor of the Department of Natural Resources, including its Offices and Commissions, for the sole purpose of implementing, constructing, servicing and maintaining approved coastal zone management and/or restoration projects. Utilization of any and all rights derived under this lease by the mineral lessee, its agents, successors or assigns, shall not interfere with nor hinder the reasonable surface use by the Department of Natural Resources, its Offices or Commissions, as herein above reserved.

Applicant: Noxxe Energy

Bidder	Cash Payment	Price / Acre	Rental	Oil	Gas	Other



TR 35027
1,370 ± ACS.
NOV., 2002

P.O.B.
X= 2,509,975.86
Y= 511, 959.70

ORLEANS PARISH
ST. BERNARD PARISH

LAKE BORGNE

ALLIGATOR BEND

SL 17141

SL 17142

SL 17073

SL 17074

Orleans & St. Bernard Parishes, Louisiana



MAP 27
LAMBERT LA SOUTH ZONE

TRACT 35028 - Lake Borgne Area, St. Bernard Parish, Louisiana

All of the lands now or formerly constituting the beds and bottoms of all water bodies of every nature and description, and all islands and other lands formed by accretion, where allowed by law, or by reliction, and excepting tax adjudicated lands, belonging to the State of Louisiana and not presently under mineral lease on November 13, 2002, situated in St. Bernard Parish, Louisiana, and more particularly described as follows: Beginning at a point having Coordinates of X = 2,509,975.86 and Y = 511,958.70; thence East 14,758.04 feet to a point having Coordinates of X = 2,524,733.90 and Y = 511,958.70; thence South 2,758.05 feet to a point being the Northeast corner of State Lease No. 17141 and the Northwest corner of State Lease No. 17142 having Coordinates of X = 2,524,733.90 and Y = 509,200.65; thence along the North and West boundary of said State Lease No. 17141 the following courses: West 2,961.97 feet to a point having Coordinates of X = 2,521,771.93 and Y = 509,200.65, South 66 degrees 02 minutes 38 seconds West 2,462.83 feet to a point having Coordinates of X = 2,519,521.26 and Y = 508,200.65, West 4,501.33 feet to a point having Coordinates of X = 2,515,019.93 and Y = 508,200.65 and South 2,000.00 feet to a point being the Southwest corner of said State Lease No. 17141 and the Northernmost Northwest corner of State Lease No. 17073 having Coordinates of X = 2,515,019.93 and Y = 506,200.65; thence West 5,044.07 feet to a point having Coordinates of X = 2,509,975.86 and Y = 506,200.65; thence North 5,758.05 feet to the point of beginning, containing approximately **1,410.98 acres**, all as more particularly outlined on a plat on file in the Office of Mineral Resources, Department of Natural Resources, as provided by the applicant. All bearings, distances and coordinates are based on Louisiana Coordinate System of 1927, (North or South Zone), where applicable.

NOTE: The above description of the Tract nominated for lease has been provided and corrected, where required, exclusively by the nomination party. Any mineral lease selected from this Tract and awarded by the Louisiana State Mineral Board shall be without warranty of any kind, either express, implied, or statutory, including, but not limited to, the implied warranties of merchantability and fitness for a particular purpose. Should the mineral lease awarded by the Louisiana State Mineral Board be subsequently modified, cancelled or abrogated due to the existence of conflicting leases, operating agreements, private claims or other future obligations or conditions which may affect all or any portion of the leased Tract, it shall not relieve the Lessee of the obligation to pay any bonus due thereon to the Louisiana State Mineral Board, nor shall the Louisiana State Mineral Board be obligated to refund any consideration paid by the Lessor prior to such modification, cancellation, or abrogation, including, but not limited to, bonuses, rentals and royalties.

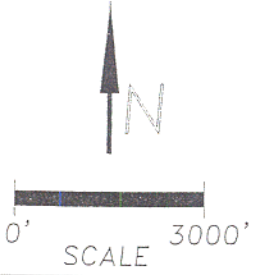
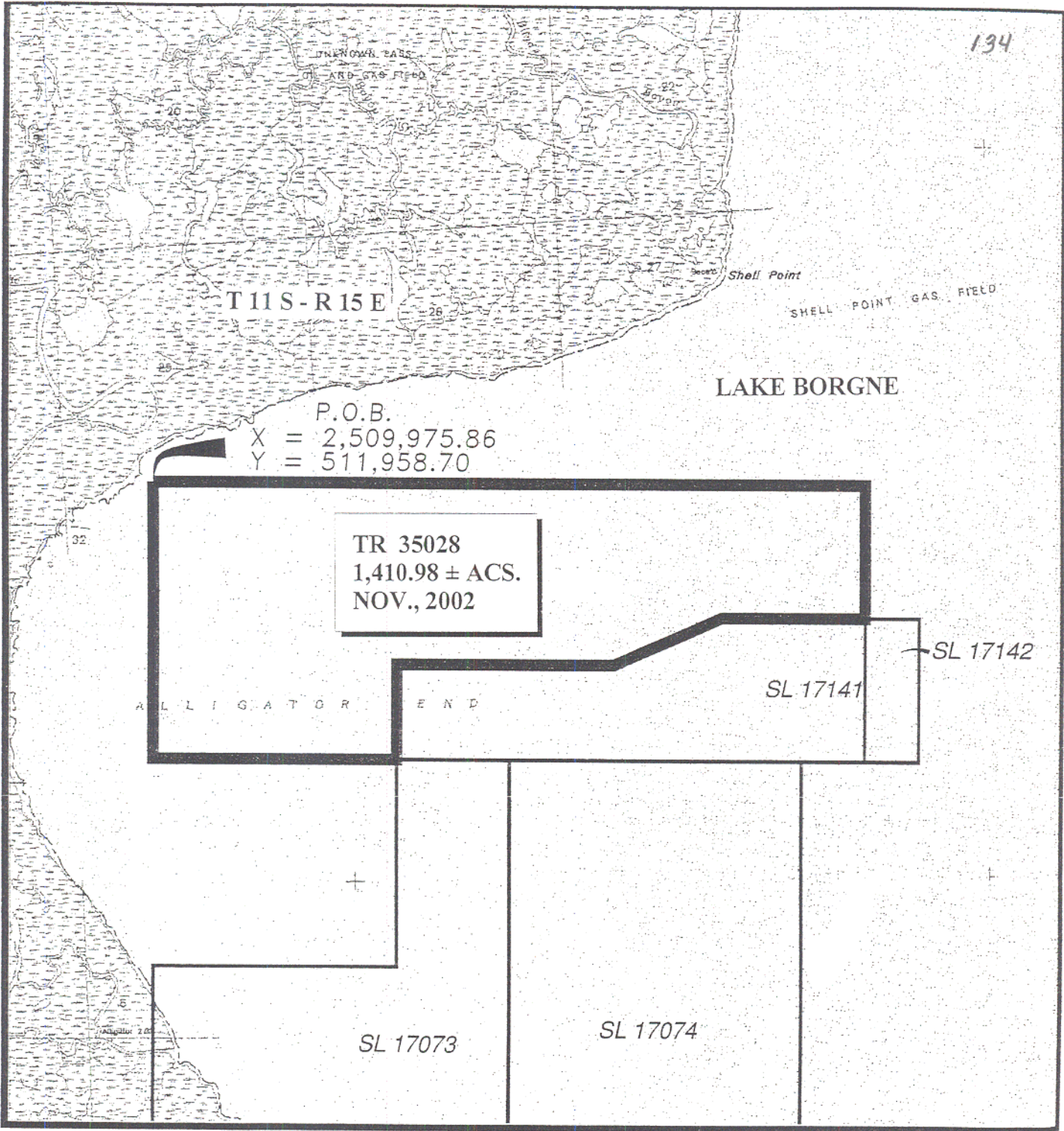
NOTE: The Office of Mineral Resources will require a minimum bonus of \$230 per acre and a minimum royalty of 23%.

NOTE: The Department of Wildlife and Fisheries has designated certain areas in the coastal waters of the State of Louisiana as Oyster Seed Bed Areas. The exact location of those Seed Bed Areas must be obtained from the Department of Wildlife and Fisheries and any work done under a mineral lease from the State of Louisiana may necessarily be conducted in conformity with the rules and regulations promulgated by the said Department of Wildlife and Fisheries for Oyster Seed Bed Areas.

NOTE: The State of Louisiana does hereby reserve, and this lease shall be subject to, the imprescriptible right of surface use in the nature of a servitude in favor of the Department of Natural Resources, including its Offices and Commissions, for the sole purpose of implementing, constructing, servicing and maintaining approved coastal zone management and/or restoration projects. Utilization of any and all rights derived under this lease by the mineral lessee, its agents, successors or assigns, shall not interfere with nor hinder the reasonable surface use by the Department of Natural Resources, its Offices or Commissions, as herein above reserved.

Applicant: Noxxe Energy

Bidder	Cash Payment	Price / Acre	Rental	Oil	Gas	Other



ST. BERNARD PARISH, LA

St. Bernard Parish, LA

TRACT 35029 - Lake Borgne Area, St. Bernard Parish, Louisiana

All of the lands now or formerly constituting the beds and bottoms of all water bodies of every nature and description, and all islands and other lands formed by accretion, where allowed by law, or by reliction, and excepting tax adjudicated lands, belonging to the State of Louisiana and not presently under mineral lease on November 13, 2002, situated in St. Bernard Parish, Louisiana, and more particularly described as follows: Beginning at a point having Coordinates of X = 2,509,975.86 and Y = 506,200.65; thence East 5,044.07 feet to a point being the northernmost Northwest corner of State Lease No. 17073 having Coordinates of X = 2,515,019.93 and Y = 506,200.65; thence along said State Lease No. 17073 the following courses: South 4,314.58 feet to a point having Coordinates of X = 2,515,019.93 and Y = 501,886.07 and West 5,044.07 feet to a point having Coordinates of X = 2,509,975.86 and Y = 501,886.07; thence North 4,314.58 feet to the point of beginning, containing approximately **499.61 acres**, all as more particularly outlined on a plat on file in the Office of Mineral Resources, Department of Natural Resources, as provided by the applicant. All bearings, distances and coordinates are based on Louisiana Coordinate System of 1927, (North or South Zone), where applicable.

NOTE: The above description of the Tract nominated for lease has been provided and corrected, where required, exclusively by the nomination party. Any mineral lease selected from this Tract and awarded by the Louisiana State Mineral Board shall be without warranty of any kind, either express, implied, or statutory, including, but not limited to, the implied warranties of merchantability and fitness for a particular purpose. Should the mineral lease awarded by the Louisiana State Mineral Board be subsequently modified, cancelled or abrogated due to the existence of conflicting leases, operating agreements, private claims or other future obligations or conditions which may affect all or any portion of the leased Tract, it shall not relieve the Lessee of the obligation to pay any bonus due thereon to the Louisiana State Mineral Board, nor shall the Louisiana State Mineral Board be obligated to refund any consideration paid by the Lessor prior to such modification, cancellation, or abrogation, including, but not limited to, bonuses, rentals and royalties.

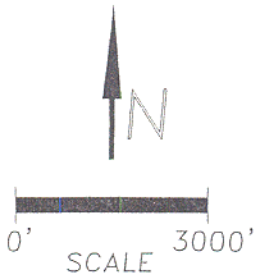
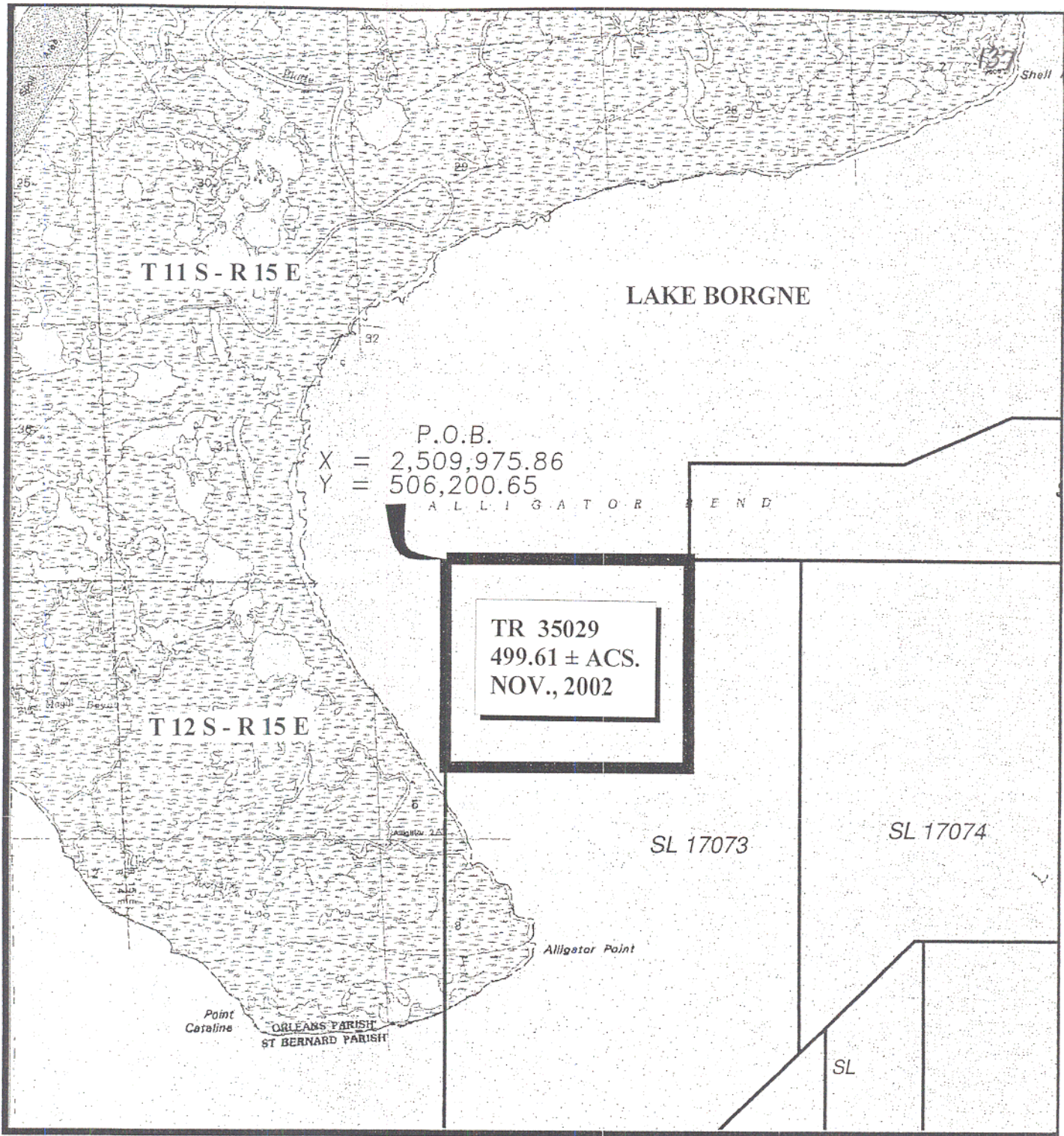
NOTE: The Office of Mineral Resources will require a minimum bonus of \$230 per acre and a minimum royalty of 23%.

NOTE: The Department of Wildlife and Fisheries has designated certain areas in the coastal waters of the State of Louisiana as Oyster Seed Bed Areas. The exact location of those Seed Bed Areas must be obtained from the Department of Wildlife and Fisheries and any work done under a mineral lease from the State of Louisiana may necessarily be conducted in conformity with the rules and regulations promulgated by the said Department of Wildlife and Fisheries for Oyster Seed Bed Areas.

NOTE: The State of Louisiana does hereby reserve, and this lease shall be subject to, the imprescriptible right of surface use in the nature of a servitude in favor of the Department of Natural Resources, including its Offices and Commissions, for the sole purpose of implementing, constructing, servicing and maintaining approved coastal zone management and/or restoration projects. Utilization of any and all rights derived under this lease by the mineral lessee, its agents, successors or assigns, shall not interfere with nor hinder the reasonable surface use by the Department of Natural Resources, its Offices or Commissions, as herein above reserved.

Applicant: Noxxe Energy

Bidder	Cash Payment	Price / Acre	Rental	Oil	Gas	Other



TRACT 35030 - Lake Borgne Area, St. Bernard Parish, Louisiana

All of the lands now or formerly constituting the beds and bottoms of all water bodies of every nature and description, and all islands and other lands formed by accretion, where allowed by law, or by reliction, and excepting tax adjudicated lands, belonging to the State of Louisiana and not presently under mineral lease on November 13, 2002, situated in St. Bernard Parish, Louisiana, and more particularly described as follows: Beginning at a point being the Southeast corner of State Lease No. 17141 and the Southwest corner of State Lease No. 17142 having Coordinates of X = 2,524,733.90 and Y = 506,200.65; thence South 14,758.05 feet to a point having Coordinates of X = 2,524,733.90 and Y = 491,442.60; thence West 9,665.15 feet to a point being the Northeast corner of State Lease No. 17546 and the Southeast corner of State Lease No. 17545 having Coordinates of X = 2,515,068.75 and Y = 491,442.60; thence North 11 degrees 55 minutes 54 seconds East 2,990.91 feet along the East boundary of State Lease No. 17545 to a point on the South line of State Lease No. 17073 having Coordinates of X = 2,515,687.10 and Y = 494,368.89; thence North 46 degrees 10 minutes 29 seconds East 2,311.69 feet along the Southeast boundary of State Lease No. 17073 to its Northernmost Southeast corner and the Southernmost corner of State Lease No. 17074 having Coordinates of X = 2,517,354.88 and Y = 495,969.65; thence Northeasterly along the Southern boundary of State Lease No. 17074 to the Northwest corner of State Lease No. 17544 having a Coordinate of X = 2,517,910.54; thence along the boundaries of State Lease No. 17544 the following courses: South approximately 3,035 feet, East approximately 2,068 feet and North approximately 4,850 feet to the Northeast corner of State Lease No. 17544 having a Coordinate of X = 2,519,978.73; thence Easterly approximately 3,441 feet along the South boundary of State Lease No. 17074 to its Southeast corner having Coordinates of X = 2,523,419.50 and Y = 498,318.07; thence North 7,882.58 feet to the Northeast corner of said State Lease No. 17074 to a point on the South boundary of State Lease No. 17141 having Coordinates of X = 2,523,419.50 and Y = 506,200.65; thence East 1,314.40 feet along the South boundary of said State Lease No. 17141 to the point of beginning, **LESS AND EXCEPT** all that portion of State Lease No. 17074 that may lie within the above described tract, containing approximately **1,309.22 acres**, all as more particularly outlined on a plat on file in the Office of Mineral Resources, Department of Natural Resources, as provided by the applicant. All bearings, distances and coordinates are based on Louisiana Coordinate System of 1927, (North or South Zone), where applicable.

NOTE: The above description of the Tract nominated for lease has been provided and corrected, where required, exclusively by the nomination party. Any mineral lease selected from this Tract and awarded by the Louisiana State Mineral Board shall be without warranty of any kind, either express, implied, or statutory, including, but not limited to, the implied warranties of merchantability and fitness for a particular

purpose. Should the mineral lease awarded by the Louisiana State Mineral Board be subsequently modified, cancelled or abrogated due to the existence of conflicting leases, operating agreements, private claims or other future obligations or conditions which may affect all or any portion of the leased Tract, it shall not relieve the Lessee of the obligation to pay any bonus due thereon to the Louisiana State Mineral Board, not shall the Louisiana State Mineral Board be obligated to refund any consideration paid by the Lessor prior to such modification, cancellation, or abrogation, including, but not limited to, bonuses, rentals and royalties.

NOTE: The Office of Mineral Resources will require a minimum bonus of \$230 per acre and a minimum royalty of 23%.

NOTE: The Department of Wildlife and Fisheries has designated certain areas in the coastal waters of the State of Louisiana as Oyster Seed Bed Areas. The exact location of those Seed Bed Areas must be obtained from the Department of Wildlife and Fisheries and any work done under a mineral lease from the State of Louisiana may necessarily be conducted in conformity with the rules and regulations promulgated by the said Department of Wildlife and Fisheries for Oyster Seed Bed Areas.

NOTE: The State of Louisiana does hereby reserve, and this lease shall be subject to, the imprescriptible right of surface use in the nature of a servitude in favor of the Department of Natural Resources, including its Offices and Commissions, for the sole purpose of implementing, constructing, servicing and maintaining approved coastal zone management and/or restoration projects. Utilization of any and all rights derived under this lease by the mineral lessee, its agents, successors or assigns, shall not interfere with nor hinder the reasonable surface use by the Department of Natural Resources, its Offices or Commissions, as herein above reserved.

Applicant: Noxxe Energy

Bidder	Cash Payment	Price / Acre	Rental	Oil	Gas	Other

140

SL 17142

LAKE BORGNE
GAS FIELD

SL 17141

ALLIGATOR POINT

P.O.B.
X = 2,524,733.90
Y = 506,200.65

+

SL 17073

SL 17074

LAKE BORGNE



Alligator Point

SL 17544

TR 35030
1,309.22 ± ACS.
NOV., 2002

SL 17545

SL 17546

SL 17143



0' SCALE 3000'

TRACT 35031 - Lake Borgne Area, St. Bernard Parish, Louisiana

All of the lands now or formerly constituting the beds and bottoms of all water bodies of every nature and description, and all islands and other lands formed by accretion, where allowed by law, or by reliction, and excepting tax adjudicated lands, belonging to the State of Louisiana and not presently under mineral lease on November 13, 2002, situated in St. Bernard Parish, Louisiana, and more particularly described as follows: Beginning at a point having Coordinates of X = 2,524,733.90 and Y = 491,442.60; thence South 7,379.02 feet to a point having Coordinates of X = 2,524,733.90 and Y = 484,063.58; thence West 11,875.26 feet to a point being the southernmost Southeast corner of State Lease No. 17143 and the Northeast corner of State Lease No. 17144 having Coordinates of X = 2,512,858.64 and Y = 484,063.58; thence along said State Lease No. 17143 the following courses: North 1,906.12 feet, East 587.01 feet, North 1,893.05 feet, and North 31 degrees 42 minutes 19 seconds East 1,121.76 feet to the Northeast corner of said State Lease No. 17143 and the Southeast corner of State Lease No. 17546 having Coordinates of X = 2,514,035.19 and Y = 488.817.10; thence along State Lease No. 17546 the following courses: North 31 degrees 42 minutes 18 seconds East 822.52 feet, South 55 degrees 17 minutes 23 seconds East 206.25 and North 11 degrees 55 minutes 54 seconds East 2,088.30 feet to a point being the Northeast corner of State Lease No. 17546 and the Southeast corner of State Lease No. 17545 having Coordinates of X = 2,515,068.75 and Y = 491,442.60; thence East 9,665.15 feet to the point of beginning, containing approximately **1,855.48 acres**, all as more particularly outlined on a plat on file in the Office of Mineral Resources, Department of Natural Resources, as provided by the applicant. All bearings, distances and coordinates are based on Louisiana Coordinate System of 1927, (North or South Zone), where applicable.

NOTE: The above description of the Tract nominated for lease has been provided and corrected, where required, exclusively by the nomination party. Any mineral lease selected from this Tract and awarded by the Louisiana State Mineral Board shall be without warranty of any kind, either express, implied, or statutory, including, but not limited to, the implied warranties of merchantability and fitness for a particular purpose. Should the mineral lease awarded by the Louisiana State Mineral Board be subsequently modified, cancelled or abrogated due to the existence of conflicting leases, operating agreements, private claims or other future obligations or conditions which may affect all or any portion of the leased Tract, it shall not relieve the Lessee of the obligation to pay any bonus due thereon to the Louisiana State Mineral Board, nor shall the Louisiana State Mineral Board be obligated to refund any consideration paid by the Lessor prior to such modification, cancellation, or abrogation, including, but not limited to, bonuses, rentals and royalties.

NOTE: The Office of Mineral Resources will require a minimum bonus of \$230 per acre and a minimum royalty of 23%.

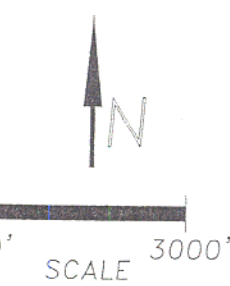
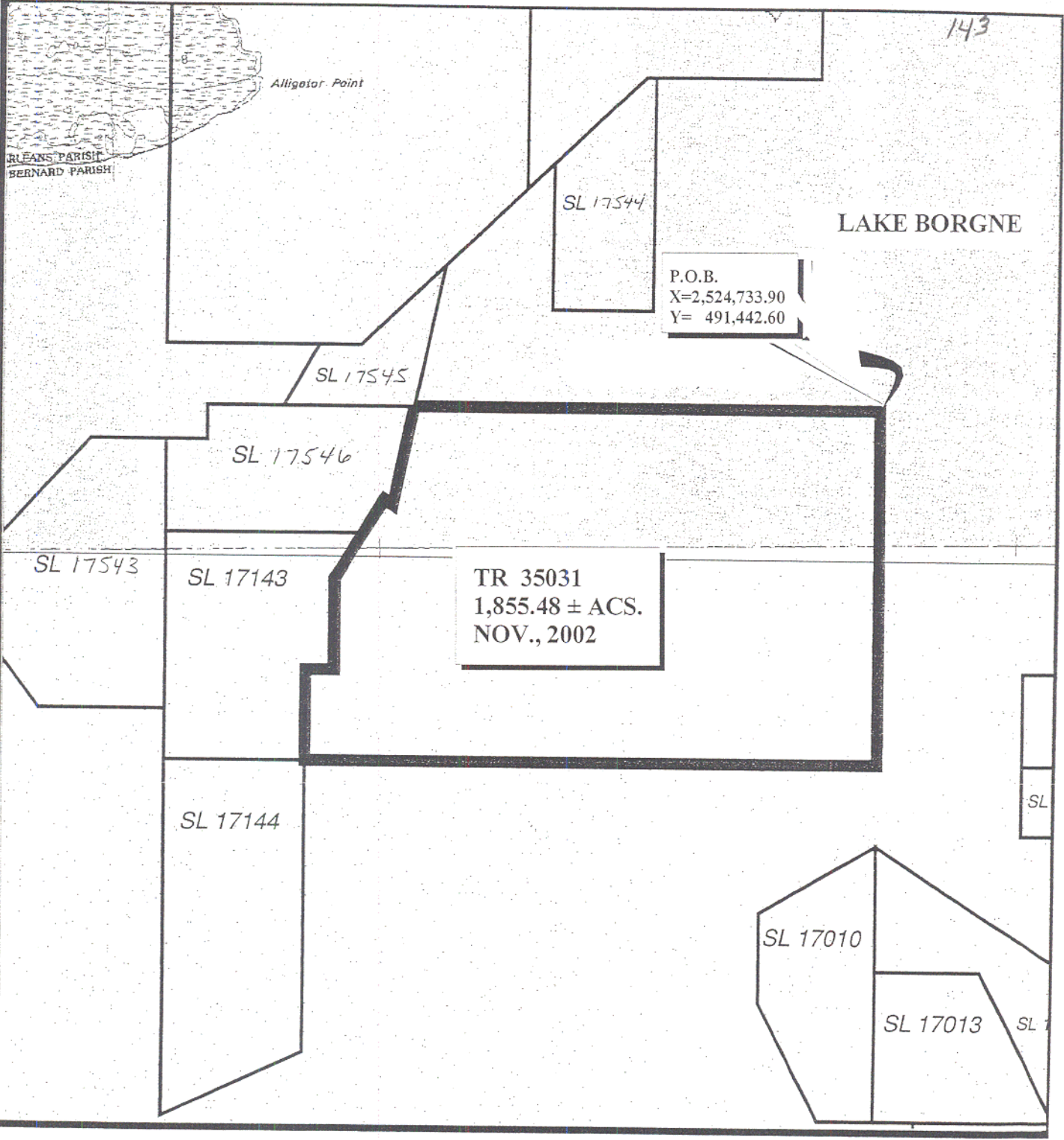
NOTE: The Department of Wildlife and Fisheries has designated certain areas in the coastal waters of the State of Louisiana as Oyster Seed Bed Areas. The exact location of those Seed Bed Areas must be obtained from the Department of Wildlife and Fisheries and any work done under a mineral lease from the State of Louisiana may necessarily be conducted in conformity with the rules and regulations promulgated by the said Department of Wildlife and Fisheries for Oyster Seed Bed Areas.

NOTE: The State of Louisiana does hereby reserve, and this lease shall be subject to, the imprescriptible right of surface use in the nature of a servitude in favor of the Department of Natural Resources, including its Offices and Commissions, for the sole purpose of implementing, constructing, servicing and maintaining approved coastal zone management and/or restoration projects. Utilization of any and all rights derived under this lease by the mineral lessee, its agents, successors or assigns, shall not interfere with nor hinder the reasonable surface use by the Department of Natural Resources, its Offices or Commissions, as herein above reserved.

Applicant: Noxxe Energy

Bidder	Cash Payment	Price / Acre	Rental	Oil	Gas	Other

143



TRACT 35032 - Lake Borgne Area, St. Bernard Parish, Louisiana

All of the lands now or formerly constituting the beds and bottoms of all water bodies of every nature and description, and all islands and other lands formed by accretion, where allowed by law, or by reliction, and excepting tax adjudicated lands, belonging to the State of Louisiana and not presently under mineral lease on November 13, 2002, situated in St. Bernard Parish, Louisiana, and more particularly described as follows: Beginning at a point being the Southwest corner of State Lease No. 17010 having Coordinates of X = 2,523,581.51 and Y = 476,684.56; thence West 13,605.65 feet to a point being the Southwest corner of State Lease No. 17144 having Coordinates of X = 2,509,975.86 and Y = 476,684.56; thence along said State Lease No. 17144 the following courses: North 65 degrees 07 minutes 30 seconds East 3,177.57 feet to a point having Coordinates of X = 2,512,858.64 and Y = 478,021.17 and North 6,042.41 feet to a point being the Northeast corner of said State Lease No. 17144 and the Southeast corner of State Lease No. 17143 having Coordinates of X = 2,512,858.64 and Y = 484,063.58; thence East 11,875.26 feet to a point having Coordinates of X = 2,524,733.90 and Y = 484,063.58; thence South 1,684.66 feet to a point being the Northern point of State Lease No. 17010 and the Northern point of State Lease No. 17076 having Coordinates of X = 2,524,733.90 and Y = 482,378.92; thence along said State Lease No. 17010 the following courses: South 59 degrees 57 minutes 36 seconds West 2,798.27 feet to a point having Coordinates of X = 2,522,311.51 and Y = 480,978.09, South 1,864.84 feet to a point having Coordinates of X = 2,522,311.51 and Y = 479,113.25 and South 27 degrees 36 minutes 21 seconds East 2,740.70 feet to the point of beginning, containing approximately **1,813.58 acres**, all as more particularly outlined on a plat on file in the Office of Mineral Resources, Department of Natural Resources, as provided by the applicant. All bearings, distances and coordinates are based on Louisiana Coordinate System of 1927, (North or South Zone), where applicable.

NOTE: The above description of the Tract nominated for lease has been provided and corrected, where required, exclusively by the nomination party. Any mineral lease selected from this Tract and awarded by the Louisiana State Mineral Board shall be without warranty of any kind, either express, implied, or statutory, including, but not limited to, the implied warranties of merchantability and fitness for a particular purpose. Should the mineral lease awarded by the Louisiana State Mineral Board be subsequently modified, cancelled or abrogated due to the existence of conflicting leases, operating agreements, private claims or other future obligations or conditions which may affect all or any portion of the leased Tract, it shall not relieve the Lessee of the obligation to pay any bonus due thereon to the Louisiana State Mineral Board, nor shall the Louisiana State Mineral Board be obligated to refund any consideration paid by the Lessor prior to such modification, cancellation, or abrogation, including, but not limited to, bonuses, rentals and royalties.

NOTE: The Office of Mineral Resources will require a minimum bonus of \$230 per acre and a minimum royalty of 23%.

NOTE: The Department of Wildlife and Fisheries has designated certain areas in the coastal waters of the State of Louisiana as Oyster Seed Bed Areas. The exact location of those Seed Bed Areas must be obtained from the Department of Wildlife and Fisheries and any work done under a mineral lease from the State of Louisiana may necessarily be conducted in conformity with the rules and regulations promulgated by the said Department of Wildlife and Fisheries for Oyster Seed Bed Areas.

NOTE: The State of Louisiana does hereby reserve, and this lease shall be subject to, the imprescriptible right of surface use in the nature of a servitude in favor of the Department of Natural Resources, including its Offices and Commissions, for the sole purpose of implementing, constructing, servicing and maintaining approved coastal zone management and/or restoration projects. Utilization of any and all rights derived under this lease by the mineral lessee, its agents, successors or assigns, shall not interfere with nor hinder the reasonable surface use by the Department of Natural Resources, its Offices or Commissions, as herein above reserved.

Applicant: Noxxe Energy

Bidder	Cash Payment	Price / Acre	Rental	Oil	Gas	Other

146

SL 17545

SL 17546

LAKE BORGNE

SL 17543

SL 17143

SL 17144

TR 35032
1,813.58 ± ACS.
NOV., 2002

SL 17010

SL

P.O.B.
X= 2,523,581.51
Y= 476,684.56

+

Proctor's Point 5/9

SL 17145

L



0' SCALE 3000'

ST. BERNARD PARISH, LA

TRACT 35033 - Lake Borgne Area, St. Bernard Parish, Louisiana

All of the lands now or formerly constituting the beds and bottoms of all water bodies of every nature and description, and all islands and other lands formed by accretion, where allowed by law, or by reliction, and excepting tax adjudicated lands, belonging to the State of Louisiana and not presently under mineral lease on November 13, 2002, situated in St. Bernard Parish, Louisiana, and more particularly described as follows: Beginning at a point having Coordinates of X = 2,509,975.86 and Y = 476,684.56; thence East 7,379.02 feet to a point having Coordinates of X = 2,517,354.88 and Y = 476,684.56; thence South 5,550.56 feet to a point being the Northeast corner of State Lease No. 17145 having Coordinates of X = 2,517,354.88 and Y = 471,134.00; thence along said State Lease No. 17145 the following courses: North 73 degrees 19 minutes 34 seconds West 5,248.82 feet to a point having Coordinates of X = 2,512,326.75 and Y = 472,640.01 and South 1,475.77 feet to the Northernmost Southwest corner of said State Lease No. 17145 and the most Northern point of State Lease No. 17011 having Coordinates of X = 2,512,326.75 and Y = 471,164.24; thence along said State Lease No. 17011 the following courses: South 12 degrees 15 minutes 39 seconds West 2,506.34 feet to a point having Coordinates of X = 2,511,794.50 and Y = 468,715.07, South 15 degrees 15 minutes 51 seconds East 3,359.74 feet to a point having Coordinates of X = 2,512,679.02 and Y = 465,473.86 and East 1,689.35 feet along the Southern boundary of said State Lease No. 17011 to a point being the Northwest corner of State Lease No. 17145 having Coordinates of X = 2,514,368.37 and Y = 465,473.86; thence along said State Lease No. 17145 the following courses: South 55 degrees 06 minutes 44 seconds East 1,384.45 feet to a point having Coordinates of X = 2,515,504.00 and Y = 464,682.00 and East 1,850.88 feet to the Southeast corner of said State Lease No. 17145 having Coordinates of X = 2,517,354.88 and Y = 464,682.00; thence South 2,755.49 feet to a point having Coordinates of X = 2,517,354.88 and Y = 461,926.51; thence West 7,379.02 feet to a point having Coordinates of X = 2,509,975.86 and Y = 461,926.51; thence North 14,758.05 feet to the point of beginning, containing approximately **1,600 acres**, all as more particularly outlined on a plat on file in the Office of Mineral Resources, Department of Natural Resources, as provided by the applicant. All bearings, distances and coordinates are based on Louisiana Coordinate System of 1927, (North or South Zone), where applicable.

NOTE: The above description of the Tract nominated for lease has been provided and corrected, where required, exclusively by the nomination party. Any mineral lease selected from this Tract and awarded by the Louisiana State Mineral Board shall be without warranty of any kind, either express, implied, or statutory, including, but not limited to, the implied warranties of merchantability and fitness for a particular purpose. Should the mineral lease awarded by the Louisiana State Mineral Board be subsequently modified, cancelled or abrogated due to the existence of conflicting leases, operating agreements, private claims or

other future obligations or conditions which may affect all or any portion of the leased Tract, it shall not relieve the Lessee of the obligation to pay any bonus due thereon to the Louisiana State Mineral Board, not shall the Louisiana State Mineral Board be obligated to refund any consideration paid by the Lessor prior to such modification, cancellation, or abrogation, including, but not limited to, bonuses, rentals and royalties.

NOTE: The Office of Mineral Resources will require a minimum bonus of \$230 per acre and a minimum royalty of 23%.

NOTE: The Department of Wildlife and Fisheries has designated certain areas in the coastal waters of the State of Louisiana as Oyster Seed Bed Areas. The exact location of those Seed Bed Areas must be obtained from the Department of Wildlife and Fisheries and any work done under a mineral lease from the State of Louisiana may necessarily be conducted in conformity with the rules and regulations promulgated by the said Department of Wildlife and Fisheries for Oyster Seed Bed Areas.

NOTE: The State of Louisiana does hereby reserve, and this lease shall be subject to, the imprescriptible right of surface use in the nature of a servitude in favor of the Department of Natural Resources, including its Offices and Commissions, for the sole purpose of implementing, constructing, servicing and maintaining approved coastal zone management and/or restoration projects. Utilization of any and all rights derived under this lease by the mineral lessee, its agents, successors or assigns, shall not interfere with nor hinder the reasonable surface use by the Department of Natural Resources, its Offices or Commissions, as herein above reserved.

Applicant: Noxxe Energy

Bidder	Cash Payment	Price / Acre	Rental	Oil	Gas	Other

149

SL 170

LAKE BORGNE

P.O.B.
X = 2,509,975.86
Y = 476,684.56

TR 35033
1,600 ± ACS.
NOV., 2002

SL 17145

SL 17011

Proctor Point

SL 17146

SL 17012

T 13 S



0' 3000'
SCALE

ST. BERNARD PARISH, LA

TRACT 35034 - Lake Borgne Area, St. Bernard Parish, Louisiana

All of the lands now or formerly constituting the beds and bottoms of all water bodies of every nature and description, and all islands and other lands formed by accretion, where allowed by law, or by reliction, and excepting tax adjudicated lands, belonging to the State of Louisiana and not presently under mineral lease on November 13, 2002, situated in St. Bernard Parish, Louisiana, and more particularly described as follows: Beginning at a point being the Southeast corner of State Lease No. 17010 having Coordinates of X = 2,524,733.90 and Y = 476,684.56; thence South 8,120.88 feet to a point having Coordinates of X = 2,524,733.90 and Y = 468,563.68; thence West 1,019.86 feet to the Southeast corner of State Lease No. 17146 and the Northeast corner of State Lease No. 17012 having Coordinates of X = 2,523,714.04 and Y = 468,563.68; thence along said State Lease No. 17146 the following courses: North 1,200.00 feet to Coordinates of X = 2,523,714.04 and Y = 469,763.68, West 2,196.21 feet to Coordinates of X = 2,521,517.83 and Y = 469,763.68, and South 1,200.00 feet to a point being the Southwest corner of State Lease No. 17146 and the Northwest corner of State Lease No. 17012 having Coordinates of X = 2,521,517.83 and Y = 468,563.68; thence West 4,162.95 feet to a point on the East boundary of State Lease No. 17145 having Coordinates of X = 2,517,354.88 and Y = 468,563.68; thence North 2,570.32 feet along the East boundary of said State Lease No. 17145 to a point having Coordinates of X = 2,517,354.88 and Y = 471,134.00; thence North 5,550.56 feet to a point having Coordinates of X = 2,517,354.88 and Y = 476,684.56; thence East 1,436.12 feet to the Southwest corner of State Lease No. 17009 having Coordinates of X = 2,518,791.00 and Y = 476,684.56; thence East 3,190.00 feet along the South boundary and to a point being the Southeast corner of said State Lease No. 17009 having Coordinates of X = 2,521,981.00 and Y = 476,684.56; thence East 1,600.51 feet to the Southwest corner of State Lease No. 17010 having Coordinates of X = 2,523,581.51 and Y = 476,684.56; thence East 1,152.39 feet along the South boundary of said State Lease No. 17010 to the point of beginning, containing approximately **1,315.17 acres**, all as more particularly outlined on a plat on file in the Office of Mineral Resources, Department of Natural Resources, as provided by the applicant. All bearings, distances and coordinates are based on Louisiana Coordinate System of 1927, (North or South Zone), where applicable.

NOTE: The above description of the Tract nominated for lease has been provided and corrected, where required, exclusively by the nomination party. Any mineral lease selected from this Tract and awarded by the Louisiana State Mineral Board shall be without warranty of any kind, either express, implied, or statutory, including, but not limited to, the implied warranties of merchantability and fitness for a particular purpose. Should the mineral lease awarded by the Louisiana State Mineral Board be subsequently modified, cancelled or abrogated due to the existence of conflicting leases, operating agreements, private claims or other future obligations or conditions which may affect all or any portion

of the leased Tract, it shall not relieve the Lessee of the obligation to pay any bonus due thereon to the Louisiana State Mineral Board, nor shall the Louisiana State Mineral Board be obligated to refund any consideration paid by the Lessor prior to such modification, cancellation, or abrogation, including, but not limited to, bonuses, rentals and royalties.

NOTE: The Office of Mineral Resources will require a minimum bonus of \$230 per acre and a minimum royalty of 23%.

NOTE: The Department of Wildlife and Fisheries has designated certain areas in the coastal waters of the State of Louisiana as Oyster Seed Bed Areas. The exact location of those Seed Bed Areas must be obtained from the Department of Wildlife and Fisheries and any work done under a mineral lease from the State of Louisiana may necessarily be conducted in conformity with the rules and regulations promulgated by the said Department of Wildlife and Fisheries for Oyster Seed Bed Areas.

NOTE: The State of Louisiana does hereby reserve, and this lease shall be subject to, the imprescriptible right of surface use in the nature of a servitude in favor of the Department of Natural Resources, including its Offices and Commissions, for the sole purpose of implementing, constructing, servicing and maintaining approved coastal zone management and/or restoration projects. Utilization of any and all rights derived under this lease by the mineral lessee, its agents, successors or assigns, shall not interfere with nor hinder the reasonable surface use by the Department of Natural Resources, its Offices or Commissions, as herein above reserved.

Applicant: Noxxe Energy

Bidder	Cash Payment	Price / Acre	Rental	Oil	Gas	Other

152

SL 17010

SL 17013

SL 17076

P.O.B.
X = 2,524,733.90
Y = 476,684.56

SL 17147

TR 35034
1,315.17 ± ACS.
NOV., 2002

SL 17145

SL 17011

Proctor Point

SL 17146

SL 17014

SL 17012

LAKE BORGNE



0' SCALE 3000'

ST. BERNARD PARISH, LA

TRACT 35035 - Lake Borgne Area, St. Bernard Parish, Louisiana

All of the lands now or formerly constituting the beds and bottoms of all water bodies of every nature and description, and all islands and other lands formed by accretion, where allowed by law, or by reliction, and excepting tax adjudicated lands, belonging to the State of Louisiana and not presently under mineral lease on November 13, 2002, situated in St. Bernard Parish, Louisiana, and more particularly described as follows: Beginning at a point having Coordinates of X = 2,524,733.90 and Y = 461,926.51; thence West 7,379.02 feet to a point having Coordinates of X = 2,517,354.88 and Y = 461,926.51; thence North 2,755.49 feet to the Southeast corner of State Lease No. 17145 having Coordinates of X = 2,517,354.88 and Y = 464,682.00; thence North 3,881.68 feet along the East boundary of said State Lease No. 17145 to a point having Coordinates of X = 2,517,354.88 and Y = 468,563.68; thence East 4,162.95 feet to a point being the Southwest corner of State Lease No. 17146 and the Northwest corner of State Lease No. 17012 having Coordinates of X = 2,521,517.83 and Y = 468,563.68; thence along said State Lease No. 17012 the following courses: South 2,561.32 to Coordinates of X = 2,521,517.83 and Y = 466,002.36, East 2,196.21 feet to Coordinates of X = 2,523,714.04 and Y = 466,002.36, and North 2,561.32 feet to a point being the Southeast corner of said State Lease No. 17146 and the Northeast corner of said State Lease No. 17012 having Coordinates of X = 2,523,714.04 and Y = 468,563.68; thence East 1,019.86 feet to a point having Coordinates of X = 2,524,733.90 and Y = 468,563.68; thence South 6,637.17 feet to the point of beginning, containing approximately **995.19 acres**, all as more particularly outlined on a plat on file in the Office of Mineral Resources, Department of Natural Resources, as provided by the applicant. All bearings, distances and coordinates are based on Louisiana Coordinate System of 1927, (North or South Zone), where applicable.

NOTE: The above description of the Tract nominated for lease has been provided and corrected, where required, exclusively by the nomination party. Any mineral lease selected from this Tract and awarded by the Louisiana State Mineral Board shall be without warranty of any kind, either express, implied, or statutory, including, but not limited to, the implied warranties of merchantability and fitness for a particular purpose. Should the mineral lease awarded by the Louisiana State Mineral Board be subsequently modified, cancelled or abrogated due to the existence of conflicting leases, operating agreements, private claims or other future obligations or conditions which may affect all or any portion of the leased Tract, it shall not relieve the Lessee of the obligation to pay any bonus due thereon to the Louisiana State Mineral Board, nor shall the Louisiana State Mineral Board be obligated to refund any consideration paid by the Lessor prior to such modification, cancellation, or abrogation, including, but not limited to, bonuses, rentals and royalties.

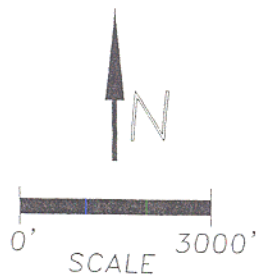
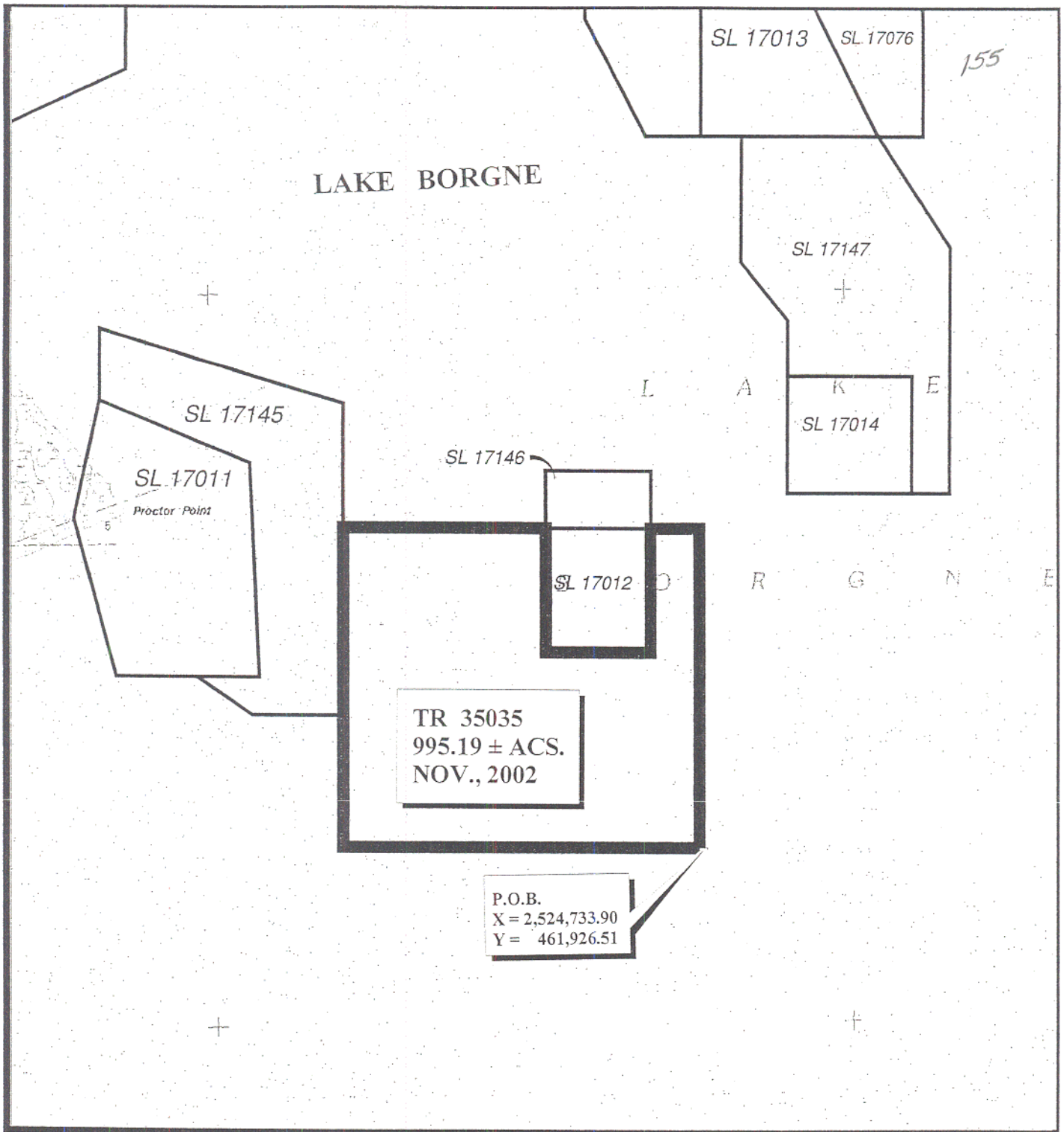
NOTE: The Office of Mineral Resources will require a minimum bonus of \$230 per acre and a minimum royalty of 23%.

NOTE: The Department of Wildlife and Fisheries has designated certain areas in the coastal waters of the State of Louisiana as Oyster Seed Bed Areas. The exact location of those Seed Bed Areas must be obtained from the Department of Wildlife and Fisheries and any work done under a mineral lease from the State of Louisiana may necessarily be conducted in conformity with the rules and regulations promulgated by the said Department of Wildlife and Fisheries for Oyster Seed Bed Areas.

NOTE: The State of Louisiana does hereby reserve, and this lease shall be subject to, the imprescriptible right of surface use in the nature of a servitude in favor of the Department of Natural Resources, including its Offices and Commissions, for the sole purpose of implementing, constructing, servicing and maintaining approved coastal zone management and/or restoration projects. Utilization of any and all rights derived under this lease by the mineral lessee, its agents, successors or assigns, shall not interfere with nor hinder the reasonable surface use by the Department of Natural Resources, its Offices or Commissions, as herein above reserved.

Applicant: Noxxe Energy

Bidder	Cash Payment	Price / Acre	Rental	Oil	Gas	Other



TRACT 35036 - Lake Borgne Area, St. Bernard Parish, Louisiana

All of the lands now or formerly constituting the beds and bottoms of all water bodies of every nature and description, and all islands and other lands formed by accretion, where allowed by law, or by reliction, and excepting tax adjudicated lands, belonging to the State of Louisiana and not presently under mineral lease on November 13, 2002, situated in St. Bernard Parish, Louisiana, and more particularly described as follows: Beginning at a point having Coordinates of X = 2,524,733.90 and Y = 461,926.51; thence South 7,379.03 feet to a point having Coordinates of X = 2,524,733.90 and Y = 454,547.48; thence West 14,758.04 feet to a point having Coordinates of X = 2,509,975.86 and Y = 454,547.48; thence North 7,379.03 feet to a point having Coordinates of X = 2,509,975.86 and Y = 461,926.51; thence East 14,758.04 feet to the point of beginning, containing approximately **2,500.00 acres**, all as more particularly outlined on a plat on file in the Office of Mineral Resources, Department of Natural Resources, as provided by the applicant. All bearings, distances and coordinates are based on Louisiana Coordinate System of 1927, (North or South Zone), where applicable.

NOTE: The above description of the Tract nominated for lease has been provided and corrected, where required, exclusively by the nomination party. Any mineral lease selected from this Tract and awarded by the Louisiana State Mineral Board shall be without warranty of any kind, either express, implied, or statutory, including, but not limited to, the implied warranties of merchantability and fitness for a particular purpose. Should the mineral lease awarded by the Louisiana State Mineral Board be subsequently modified, cancelled or abrogated due to the existence of conflicting leases, operating agreements, private claims or other future obligations or conditions which may affect all or any portion of the leased Tract, it shall not relieve the Lessee of the obligation to pay any bonus due thereon to the Louisiana State Mineral Board, nor shall the Louisiana State Mineral Board be obligated to refund any consideration paid by the Lessor prior to such modification, cancellation, or abrogation, including, but not limited to, bonuses, rentals and royalties.

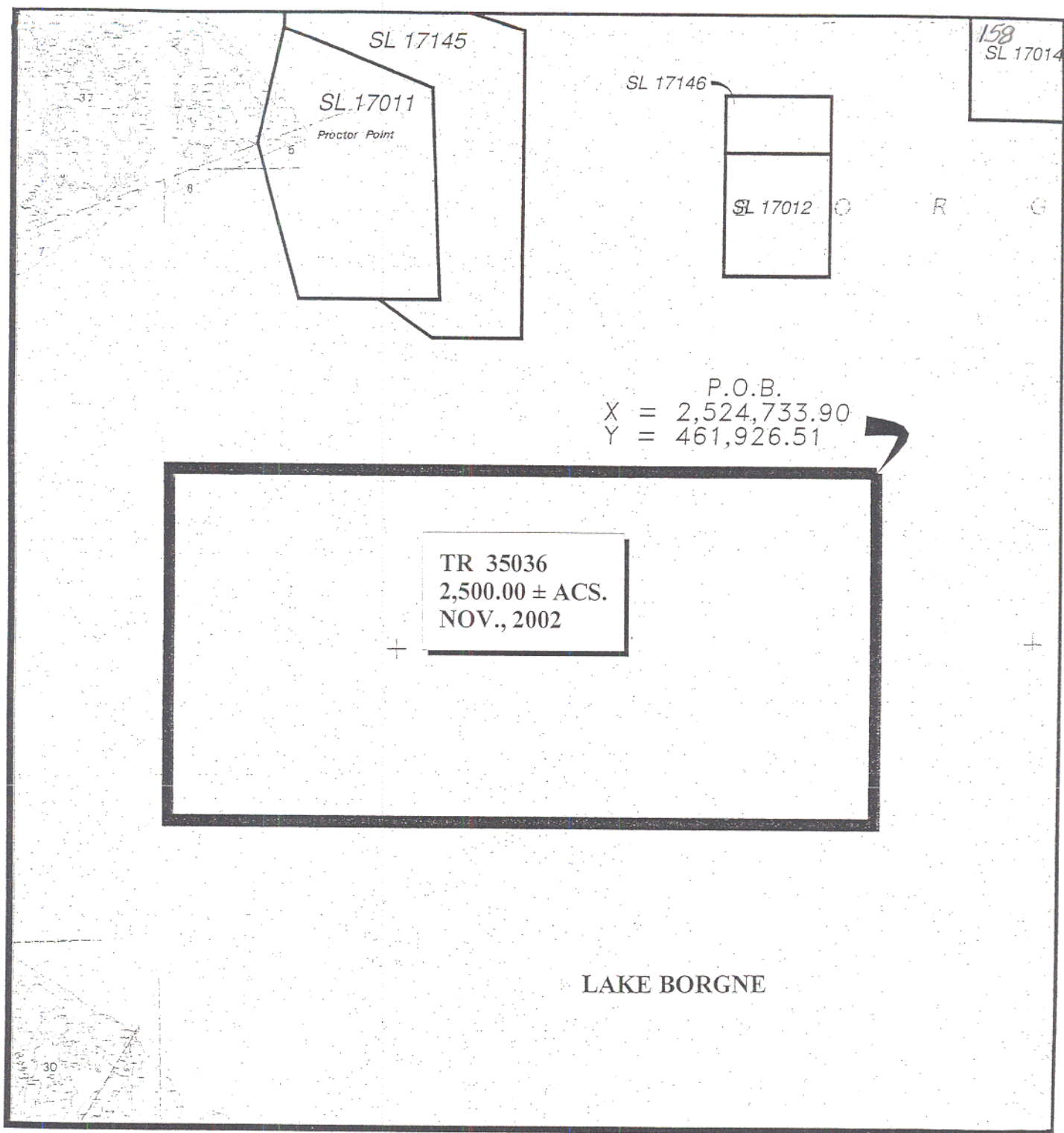
NOTE: The Office of Mineral Resources will require a minimum bonus of \$230 per acre and a minimum royalty of 23%.

NOTE: The Department of Wildlife and Fisheries has designated certain areas in the coastal waters of the State of Louisiana as Oyster Seed Bed Areas. The exact location of those Seed Bed Areas must be obtained from the Department of Wildlife and Fisheries and any work done under a mineral lease from the State of Louisiana may necessarily be conducted in conformity with the rules and regulations promulgated by the said Department of Wildlife and Fisheries for Oyster Seed Bed Areas.

NOTE: The State of Louisiana does hereby reserve, and this lease shall be subject to, the imprescriptible right of surface use in the nature of a servitude in favor of the Department of Natural Resources, including its Offices and Commissions, for the sole purpose of implementing, constructing, servicing and maintaining approved coastal zone management and/or restoration projects. Utilization of any and all rights derived under this lease by the mineral lessee, its agents, successors or assigns, shall not interfere with nor hinder the reasonable surface use by the Department of Natural Resources, its Offices or Commissions, as herein above reserved.

Applicant: Noxxe Energy

Bidder	Cash Payment	Price / Acre	Rental	Oil	Gas	Other



SL 17145

SL 17011

Proctor Point

SL 17146

SL 17012

158
SL 17014

P.O.B.
X = 2,524,733.90
Y = 461,926.51

TR 35036
2,500.00 ± ACS.
NOV., 2002

LAKE BORGNE



0' 3000'
SCALE

ST. BERNARD PARISH , LA

TRACT 35037 - Lake Borgne Area, St. Bernard Parish, Louisiana

All of the lands now or formerly constituting the beds and bottoms of all water bodies of every nature and description, and all islands and other lands formed by accretion, where allowed by law, or by reliction, and excepting tax adjudicated lands, belonging to the State of Louisiana and not presently under mineral lease on November 13, 2002, situated in St. Bernard Parish, Louisiana, and more particularly described as follows: Beginning at a point having Coordinates of X = 2,524,733.90 and Y = 447,168.46; thence West 14,758.04 feet to a point having Coordinates of X = 2,509,975.86 and Y = 447,168.46; thence North 7,379.02 feet to a point having Coordinates of X = 2,509,975.86 and Y = 454,547.48; thence East 14,758.04 feet to a point having Coordinates of X = 2,524,733.90 and Y = 454,547.48; thence South 7,379.02 feet to the point of beginning, containing approximately **2,453 acres**, all as more particularly outlined on a plat on file in the Office of Mineral Resources, Department of Natural Resources, as provided by the applicant. All bearings, distances and coordinates are based on Louisiana Coordinate System of 1927, (North or South Zone), where applicable.

NOTE: The above description of the Tract nominated for lease has been provided and corrected, where required, exclusively by the nomination party. Any mineral lease selected from this Tract and awarded by the Louisiana State Mineral Board shall be without warranty of any kind, either express, implied, or statutory, including, but not limited to, the implied warranties of merchantability and fitness for a particular purpose. Should the mineral lease awarded by the Louisiana State Mineral Board be subsequently modified, cancelled or abrogated due to the existence of conflicting leases, operating agreements, private claims or other future obligations or conditions which may affect all or any portion of the leased Tract, it shall not relieve the Lessee of the obligation to pay any bonus due thereon to the Louisiana State Mineral Board, nor shall the Louisiana State Mineral Board be obligated to refund any consideration paid by the Lessor prior to such modification, cancellation, or abrogation, including, but not limited to, bonuses, rentals and royalties.

NOTE: The Office of Mineral Resources will require a minimum bonus of \$230 per acre and a minimum royalty of 23%.

NOTE: The Department of Wildlife and Fisheries has designated certain areas in the coastal waters of the State of Louisiana as Oyster Seed Bed Areas. The exact location of those Seed Bed Areas must be obtained from the Department of Wildlife and Fisheries and any work done under a mineral lease from the State of Louisiana may necessarily be conducted in conformity with the rules and regulations promulgated by the said Department of Wildlife and Fisheries for Oyster Seed Bed Areas.

NOTE: The State of Louisiana does hereby reserve, and this lease shall be subject to, the imprescriptible right of surface use in the nature of a servitude in favor of the Department of Natural Resources, including its Offices and Commissions, for the sole purpose of implementing, constructing, servicing and maintaining approved coastal zone management and/or restoration projects. Utilization of any and all rights derived under this lease by the mineral lessee, its agents, successors or assigns, shall not interfere with nor hinder the reasonable surface use by the Department of Natural Resources, its Offices or Commissions, as herein above reserved.

Applicant: Noxxe Energy

Bidder	Cash Payment	Price / Acre	Rental	Oil	Gas	Other

LAKE BORGNE

TR 35037
2,453 ± ACS.
NOV., 2002

ACC.

T 13 S - R 15 E

P.O.B.
X = 2,524,733.90
Y = 447,168.46



0' SCALE 3000'

TRACT 35038 - Portion of Block 28, North Lake Borgne Area, Orleans and St. Bernard Parishes, Louisiana

All of the lands now or formerly constituting the beds and bottoms of all water bodies of every nature and description, and all islands and other lands formed by accretion, where allowed by law, or by reliction, and excepting tax adjudicated lands, belonging to the State of Louisiana and not presently under mineral lease on November 13, 2002, situated in Orleans and St. Bernard Parishes, Louisiana, and more particularly described as follows: Beginning at the Southeast corner of Block 28, North Lake Borgne Area, having Coordinates of X = 2,536,250.00 and Y = 520,958.70; thence West 12,440.00 feet on the South line of said Block 28 to a point having Coordinates of X = 2,523,810.00 and Y = 520,958.70; thence North 9,000.00 feet to a point on the North line of said Block 28 having Coordinates of X = 2,523,810.00 and Y = 529,958.70; thence East 12,440.00 feet on the North line of said Block 28 to its Northeast corner having Coordinates of X = 2,536,250.00 and Y = 529,958.70; thence South 9,000.00 feet on the East line of said Block 28 to the point of beginning, containing approximately **2,498 acres**, all as more particularly outlined on a plat on file in the Office of Mineral Resources, Department of Natural Resources, as provided by the applicant. All bearings, distances and coordinates are based on Louisiana Coordinate System of 1927, (North or South Zone), where applicable.

NOTE: The above description of the Tract nominated for lease has been provided and corrected, where required, exclusively by the nomination party. Any mineral lease selected from this Tract and awarded by the Louisiana State Mineral Board shall be without warranty of any kind, either express, implied, or statutory, including, but not limited to, the implied warranties of merchantability and fitness for a particular purpose. Should the mineral lease awarded by the Louisiana State Mineral Board be subsequently modified, cancelled or abrogated due to the existence of conflicting leases, operating agreements, private claims or other future obligations or conditions which may affect all or any portion of the leased Tract, it shall not relieve the Lessee of the obligation to pay any bonus due thereon to the Louisiana State Mineral Board, nor shall the Louisiana State Mineral Board be obligated to refund any consideration paid by the Lessor prior to such modification, cancellation, or abrogation, including, but not limited to, bonuses, rentals and royalties.

NOTE: The Office of Mineral Resources will require a minimum bonus of \$230 per acre and a minimum royalty of 23%.

NOTE: The Department of Wildlife and Fisheries has designated certain areas in the coastal waters of the State of Louisiana as Oyster Seed Bed Areas. The exact location of those Seed Bed Areas must be obtained from the Department of Wildlife and Fisheries and any work done under a mineral lease from the State of Louisiana may necessarily be conducted in

conformity with the rules and regulations promulgated by the said Department of Wildlife and Fisheries for Oyster Seed Bed Areas.

NOTE: The State of Louisiana does hereby reserve, and this lease shall be subject to, the imprescriptible right of surface use in the nature of a servitude in favor of the Department of Natural Resources, including its Offices and Commissions, for the sole purpose of implementing, constructing, servicing and maintaining approved coastal zone management and/or restoration projects. Utilization of any and all rights derived under this lease by the mineral lessee, its agents, successors or assigns, shall not interfere with nor hinder the reasonable surface use by the Department of Natural Resources, its Offices or Commissions, as herein above reserved.

Applicant: Noxxe Energy

Bidder	Cash Payment	Price / Acre	Rental	Oil	Gas	Other

164

R15E

BIK. 27

BIK. 22

Little Deedie Lake

Leeds Lake

Big Deedie Lake

N. LAKE BORGNE AREA

INTRACOASTAL WATERWAY

T
11
S

ORLEANS PARISH
ST. BERNARD PARISH

BIK. 28

TR 35038
2,498 ± ACS.
NOV., 2002

BIK. 21

P. O. B.
X = 2,536,250.00
Y = 520,958.70

LAKE BORGNE

Shell Point

SHELL POINT GAS FIELD

R
G
N
E

Orleans & St. Bernard Parishes, Louisiana

NWD 27
LANGBERT LA SOUTH ZONE

3000 0 3000

TRACT 35039 - Lake Borgne Area, St. Bernard Parish, Louisiana

All of the lands now or formerly constituting the beds and bottoms of all water bodies of every nature and description, and all islands and other lands formed by accretion, where allowed by law, or by reliction, and excepting tax adjudicated lands, belonging to the State of Louisiana and not presently under mineral lease on November 13, 2002, situated in St. Bernard Parish, Louisiana, and more particularly described as follows: Beginning at a point having Coordinates of X = 2,524,733.90 and Y = 520,958.70; thence East 7,379.03 feet to a point having Coordinates of X = 2,532,112.93 and Y = 520,958.70; thence South 14,758.05 feet to a point having Coordinates of X = 2,532,112.93 and Y = 506,200.65; thence West 6,234.93 feet to a point being the Southeast corner of State Lease No. 17142 having Coordinates of X = 2,525,878.00 and Y = 506,200.65; thence along said State Lease No. 17142 the following courses: North 3,000.00 feet to a point having Coordinates of X = 2,525,878.00 and Y = 509,200.65 and West 1,144.10 feet to a point being the Northwest corner of said State Lease No. 17142 having Coordinates of X = 2,524,733.90 and Y = 509,200.65; thence North 11,758.05 feet to the point of beginning, containing approximately **2,421.21 acres**, all as more particularly outlined on a plat on file in the Office of Mineral Resources, Department of Natural Resources, as provided by the applicant. All bearings, distances and coordinates are based on Louisiana Coordinate System of 1927, (North or South Zone), where applicable.

NOTE: The above description of the Tract nominated for lease has been provided and corrected, where required, exclusively by the nomination party. Any mineral lease selected from this Tract and awarded by the Louisiana State Mineral Board shall be without warranty of any kind, either express, implied, or statutory, including, but not limited to, the implied warranties of merchantability and fitness for a particular purpose. Should the mineral lease awarded by the Louisiana State Mineral Board be subsequently modified, cancelled or abrogated due to the existence of conflicting leases, operating agreements, private claims or other future obligations or conditions which may affect all or any portion of the leased Tract, it shall not relieve the Lessee of the obligation to pay any bonus due thereon to the Louisiana State Mineral Board, nor shall the Louisiana State Mineral Board be obligated to refund any consideration paid by the Lessor prior to such modification, cancellation, or abrogation, including, but not limited to, bonuses, rentals and royalties.

NOTE: The Office of Mineral Resources will require a minimum bonus of \$230 per acre and a minimum royalty of 23%.

NOTE: The Department of Wildlife and Fisheries has designated certain areas in the coastal waters of the State of Louisiana as Oyster Seed Bed Areas. The exact location of those Seed Bed Areas must be obtained from the Department of Wildlife and Fisheries and any work done under a mineral

lease from the State of Louisiana may necessarily be conducted in conformity with the rules and regulations promulgated by the said Department of Wildlife and Fisheries for Oyster Seed Bed Areas.

NOTE: The State of Louisiana does hereby reserve, and this lease shall be subject to, the imprescriptible right of surface use in the nature of a servitude in favor of the Department of Natural Resources, including its Offices and Commissions, for the sole purpose of implementing, constructing, servicing and maintaining approved coastal zone management and/or restoration projects. Utilization of any and all rights derived under this lease by the mineral lessee, its agents, successors or assigns, shall not interfere with nor hinder the reasonable surface use by the Department of Natural Resources, its Offices or Commissions, as herein above reserved.

Applicant: Noxxe Energy

Bidder	Cash Payment	Price / Acre	Rental	Oil	Gas	Other

P.O.B.
X = 2,524,733.90
Y = 520,958.70

T 11 S - R 15 E

LAKE BORGNE

Shell Point

SHELL POINT GAS FIELD

TR 35039
2,421.21 ± ACS.
NOV., 2002

SL 17141

SL 17142

LAKE BORGNE
GAS FIELD



0' 3000'