

TRACT 35014 - Lake Borgne Area, St. Bernard Parish, Louisiana

All of the lands now or formerly constituting the beds and bottoms of all water bodies of every nature and description, and all islands and other lands formed by accretion, where allowed by law, or by reliction, and excepting tax adjudicated lands, belonging to the State of Louisiana and not presently under mineral lease on November 13, 2002, situated in St. Bernard Parish, Louisiana, and more particularly described as follows: Beginning at a point having Coordinates of X = 2,480,459.75 and Y = 491,442.60; thence East 7,995.88 feet to a point having Coordinates of X = 2,488,455.63 and Y = 491,442.60; thence South 2,754.60 feet to the most Northerly point of State Lease No. 17539 having Coordinates of X = 2,488,455.63 and Y = 488,688.00; thence along the boundaries of State Lease No. 17539 the following courses: South 50 degrees 21 minutes 33 seconds West 3,136.76 feet, South 2,623.26 feet and East 2,440.43 feet along the South boundary of said State Lease No. 17539 to the Northwest corner of State Lease No. 17540 having Coordinates of X = 2,488,480.57 and Y = 484,063.58; thence South 1,010.68 feet along the West line of State Lease No. 17540 to the Northeast corner of State Lease No. 17541 having Coordinates of X = 2,488,480.57 and Y = 483,052.90; thence along the boundaries of State Lease No. 17541 the following courses: West 2,946.29 feet and South 6,368.34 feet to the Southwest corner of State Lease No. 17541 having Coordinates of X = 2,485,534.28 and Y = 476,684.56; thence West 5,074.53 feet to a point having Coordinates of X = 2,480,459.75 and Y = 476,684.56; thence North 14,758.04 feet to the point of beginning, containing approximately **2,081.52 acres**, all as more particularly outlined on a plat on file in the Office of Mineral Resources, Department of Natural Resources, as provided by the applicant. All bearings, distances and coordinates are based on Louisiana Coordinate System of 1927, (North or South Zone), where applicable.

NOTE: The above description of the Tract nominated for lease has been provided and corrected, where required, exclusively by the nomination party. Any mineral lease selected from this Tract and awarded by the Louisiana State Mineral Board shall be without warranty of any kind, either express, implied, or statutory, including, but not limited to, the implied warranties of merchantability and fitness for a particular purpose. Should the mineral lease awarded by the Louisiana State Mineral Board be subsequently modified, cancelled or abrogated due to the existence of conflicting leases, operating agreements, private claims or other future obligations or conditions which may affect all or any portion of the leased Tract, it shall not relieve the Lessee of the obligation to pay any bonus due thereon to the Louisiana State Mineral Board, nor shall the Louisiana State Mineral Board be obligated to refund any consideration paid by the Lessor prior to such modification, cancellation, or abrogation, including, but not limited to, bonuses, rentals and royalties.

NOTE: The Office of Mineral Resources will require a minimum bonus of \$230 per acre and a minimum royalty of 23%.

NOTE: The Department of Wildlife and Fisheries has designated certain areas in the coastal waters of the State of Louisiana as Oyster Seed Bed Areas. The exact location of those Seed Bed Areas must be obtained from the Department of Wildlife and Fisheries and any work done under a mineral lease from the State of Louisiana may necessarily be conducted in conformity with the rules and regulations promulgated by the said Department of Wildlife and Fisheries for Oyster Seed Bed Areas.

NOTE: The State of Louisiana does hereby reserve, and this lease shall be subject to, the imprescriptible right of surface use in the nature of a servitude in favor of the Department of Natural Resources, including its Offices and Commissions, for the sole purpose of implementing, constructing, servicing and maintaining approved coastal zone management and/or restoration projects. Utilization of any and all rights derived under this lease by the mineral lessee, its agents, successors or assigns, shall not interfere with nor hinder the reasonable surface use by the Department of Natural Resources, its Offices or Commissions, as herein above reserved.

Applicant: Noxxe Energy

Bidder	Cash Payment	Price / Acre	Rental	Oil	Gas	Other

B O R G N E

L A K E

P.O.B.
X = 2,480,459.75
Y = 491,442.60

TR 35014
2,081.52 ± ACS.
NOV., 2002

SL 17539

SL 17540

SL 17541

L A K E B O R G N E



0' SCALE 3000'

ST. BERNARD PARISH , LA

TRACT 35015 - St. Bernard Parish, Louisiana

All of the lands now or formerly constituting the beds and bottoms of all water bodies of every nature and description, and all islands and other lands formed by accretion, where allowed by law, or by reliction, and excepting tax adjudicated lands, belonging to the State of Louisiana and not presently under mineral lease on November 13, 2002, situated in St. Bernard Parish, Louisiana, and more particularly described as follows: Beginning at a point having Coordinates of X = 2,495,217.80 and Y = 491,442.60; thence South 14,758.04 feet to a point having Coordinates of X = 2,495,217.80 and Y = 476,684.56; thence West 7,852.07 feet to the Southeast corner of State Lease No. 17541 having Coordinates of X = 2,487,365.73 and Y = 476,684.56; thence North 12 degrees 53 minutes 44 seconds East 4,994.34 feet along the East boundary of State Lease No. 17541 to the Southwest corner of State Lease No. 17540 having Coordinates of X = 2,488,480.57 and Y = 481,552.88; thence along the boundaries of said State Lease No. 17540 the following courses: East 2,118.53 feet, North 1,322.48 feet, East 2,157.40 feet and North 1,188.22 feet to the Northeast corner of said State Lease No. 17540 and the Southeast corner of State Lease No. 17539 having Coordinates of X = 2,492,756.50 and Y = 484,063.58; thence along the boundaries of said State Lease No. 17539 the following courses: North 2,594.86 feet, North 64 degrees 44 minutes 15 seconds West 4,755.69 feet to the most Northerly point of said State Lease No. 17539 having Coordinates of X = 2,488,455.63 and Y = 488,688.00; thence North 2,754.60 feet to a point having Coordinates of X = 2,488,455.63 and Y = 491,442.60; thence East 6,762.17 feet to the point of beginning, containing approximately **1,811.73 acres**, all as more particularly outlined on a plat on file in the Office of Mineral Resources, Department of Natural Resources, as provided by the applicant. All bearings, distances and coordinates are based on Louisiana Coordinate System of 1927, (North or South Zone), where applicable.

NOTE: The above description of the Tract nominated for lease has been provided and corrected, where required, exclusively by the nomination party. Any mineral lease selected from this Tract and awarded by the Louisiana State Mineral Board shall be without warranty of any kind, either express, implied, or statutory, including, but not limited to, the implied warranties of merchantability and fitness for a particular purpose. Should the mineral lease awarded by the Louisiana State Mineral Board be subsequently modified, cancelled or abrogated due to the existence of conflicting leases, operating agreements, private claims or other future obligations or conditions which may affect all or any portion of the leased Tract, it shall not relieve the Lessee of the obligation to pay any bonus due thereon to the Louisiana State Mineral Board, nor shall the Louisiana State Mineral Board be obligated to refund any consideration paid by the Lessor prior to such modification, cancellation, or abrogation, including, but not limited to, bonuses, rentals and royalties.

NOTE: The Office of Mineral Resources will require a minimum bonus of \$230 per acre and a minimum royalty of 23%.

NOTE: The Department of Wildlife and Fisheries has designated certain areas in the coastal waters of the State of Louisiana as Oyster Seed Bed Areas. The exact location of those Seed Bed Areas must be obtained from the Department of Wildlife and Fisheries and any work done under a mineral lease from the State of Louisiana may necessarily be conducted in conformity with the rules and regulations promulgated by the said Department of Wildlife and Fisheries for Oyster Seed Bed Areas.

NOTE: The State of Louisiana does hereby reserve, and this lease shall be subject to, the imprescriptible right of surface use in the nature of a servitude in favor of the Department of Natural Resources, including its Offices and Commissions, for the sole purpose of implementing, constructing, servicing and maintaining approved coastal zone management and/or restoration projects. Utilization of any and all rights derived under this lease by the mineral lessee, its agents, successors or assigns, shall not interfere with nor hinder the reasonable surface use by the Department of Natural Resources, its Offices or Commissions, as herein above reserved.

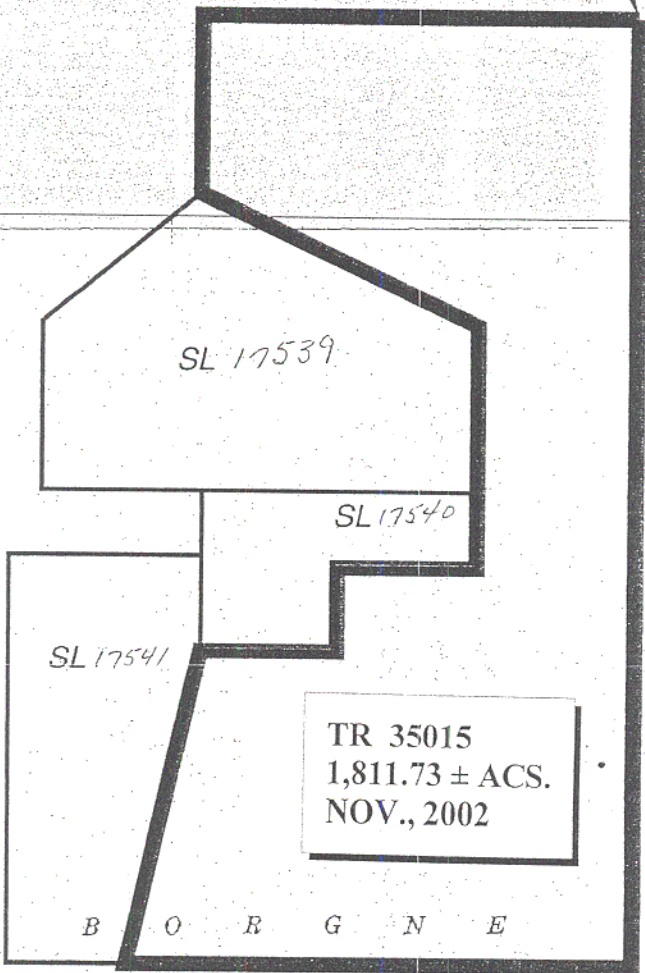
Applicant: Noxxe Energy

Bidder	Cash Payment	Price / Acre	Rental	Oil	Gas	Other

L A K E

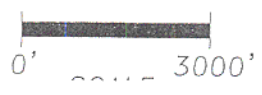
B O R G N E

P.O.B.
X = 2,495,217.80
Y = 491,442.60



A K E

B O R G N E



TRACT 35016 - Lake Borgne Area, St. Bernard Parish, Louisiana

All of the lands now or formerly constituting the beds and bottoms of all water bodies of every nature and description, and all islands and other lands formed by accretion, where allowed by law, or by reliction, and excepting tax adjudicated lands, belonging to the State of Louisiana and not presently under mineral lease on November 13, 2002, situated in St. Bernard Parish, Louisiana, and more particularly described as follows: Beginning at a point having Coordinates of X = 2,495,217.80 and Y = 476,684.56; thence South 7,379.03 feet to a point having Coordinates of X = 2,495,217.80 and Y = 469,305.53; thence West 14,758.05 feet to a point having Coordinates of X = 2,480,459.75 and Y = 469,305.53; thence North 7,379.03 feet to a point having Coordinates of X = 2,480,459.75 and Y = 476,684.56; thence East 5,074.53 feet to the Southwest corner of State Lease No. 17541 having Coordinates of X = 2,485,534.28 and Y = 476,684.56; thence East 1,831.45 feet along the South boundary of State Lease No. 17541 to its Southeast corner having Coordinates of X = 2,487,365.73 and Y = 476,684.56; thence East 7,852.07 feet to the point of beginning, containing approximately **2,500.00 acres**, all as more particularly outlined on a plat on file in the Office of Mineral Resources, Department of Natural Resources, as provided by the applicant. All bearings, distances and coordinates are based on Louisiana Coordinate System of 1927, (North or South Zone), where applicable.

NOTE: The above description of the Tract nominated for lease has been provided and corrected, where required, exclusively by the nomination party. Any mineral lease selected from this Tract and awarded by the Louisiana State Mineral Board shall be without warranty of any kind, either express, implied, or statutory, including, but not limited to, the implied warranties of merchantability and fitness for a particular purpose. Should the mineral lease awarded by the Louisiana State Mineral Board be subsequently modified, cancelled or abrogated due to the existence of conflicting leases, operating agreements, private claims or other future obligations or conditions which may affect all or any portion of the leased Tract, it shall not relieve the Lessee of the obligation to pay any bonus due thereon to the Louisiana State Mineral Board, nor shall the Louisiana State Mineral Board be obligated to refund any consideration paid by the Lessor prior to such modification, cancellation, or abrogation, including, but not limited to, bonuses, rentals and royalties.

NOTE: The Office of Mineral Resources will require a minimum bonus of \$230 per acre and a minimum royalty of 23%.

NOTE: The Department of Wildlife and Fisheries has designated certain areas in the coastal waters of the State of Louisiana as Oyster Seed Bed Areas. The exact location of those Seed Bed Areas must be obtained from the Department of Wildlife and Fisheries and any work done under a mineral lease from the State of Louisiana may necessarily be conducted in

conformity with the rules and regulations promulgated by the said Department of Wildlife and Fisheries for Oyster Seed Bed Areas.

NOTE: The State of Louisiana does hereby reserve, and this lease shall be subject to, the imprescriptible right of surface use in the nature of a servitude in favor of the Department of Natural Resources, including its Offices and Commissions, for the sole purpose of implementing, constructing, servicing and maintaining approved coastal zone management and/or restoration projects. Utilization of any and all rights derived under this lease by the mineral lessee, its agents, successors or assigns, shall not interfere with nor hinder the reasonable surface use by the Department of Natural Resources, its Offices or Commissions, as herein above reserved.

Applicant: Noxxe Energy

Bidder	Cash Payment	Price / Acre	Rental	Oil	Gas	Other

SL-17540

SL 17541

L A K E

B O R E

P.O.B.
X = 2,495,217.80
Y = 476,684.56

TR 35016
2,500.00 ± ACS.
NOV., 2002

Light

SL 17538

SL 17542

Shoal Beach Bogon

Bogon



0' 3000'
SCAIF

TRACT 35017 - Lake Borgne Area, St. Bernard Parish, Louisiana

All of the lands now or formerly constituting the beds and bottoms of all water bodies of every nature and description, and all islands and other lands formed by accretion, where allowed by law, or by reliction, and excepting tax adjudicated lands, belonging to the State of Louisiana and not presently under mineral lease on November 13, 2002, situated in St. Bernard Parish, Louisiana, and more particularly described as follows: Beginning at a point having Coordinates of X = 2,495,217.80 and Y = 461,926.51; thence West 14,758.05 feet to a point having Coordinates of X = 2,480,459.75 and Y = 461,926.51; thence North 312.78 feet to the most Southern point of State Lease No. 17542 having Coordinates of X = 2,480,459.75 and Y = 462,239.29; thence along the boundaries of State Lease No. 17542 the following courses: North 36 degrees 53 minutes 25 seconds East 1,068.75 feet, South 89 degrees 18 minutes 04 seconds East 2,609.79 feet, North 26 degrees 42 minutes 39 seconds East 1,242.97 feet, North 04 degrees 26 minutes 54 seconds East 2,234.47 feet, North 35 degrees 09 minutes 48 seconds West 1,449.01 feet, North 37 degrees 23 minutes 17 seconds West 1,490.92 feet, North 73 degrees 09 minutes 48 seconds West 1,562.68 feet, North 85 degrees 13 minutes 23 seconds West 750.26 feet to the most Northerly point of State Lease No. 17542 having Coordinates of X = 2,480,459.75 and Y = 469,284.59; thence North 20.94 feet to a point having Coordinates of X = 2,480,459.75 and Y = 469,305.53; thence East 14,758.05 to a point having Coordinates of X = 2,495,217.80 and Y = 469,305.53; thence South 7,379.02 feet to the point of beginning, containing approximately **1,391 acres**, all as more particularly outlined on a plat on file in the Office of Mineral Resources, Department of Natural Resources, as provided by the applicant. All bearings, distances and coordinates are based on Louisiana Coordinate System of 1927, (North or South Zone), where applicable.

NOTE: The above description of the Tract nominated for lease has been provided and corrected, where required, exclusively by the nomination party. Any mineral lease selected from this Tract and awarded by the Louisiana State Mineral Board shall be without warranty of any kind, either express, implied, or statutory, including, but not limited to, the implied warranties of merchantability and fitness for a particular purpose. Should the mineral lease awarded by the Louisiana State Mineral Board be subsequently modified, cancelled or abrogated due to the existence of conflicting leases, operating agreements, private claims or other future obligations or conditions which may affect all or any portion of the leased Tract, it shall not relieve the Lessee of the obligation to pay any bonus due thereon to the Louisiana State Mineral Board, nor shall the Louisiana State Mineral Board be obligated to refund any consideration paid by the Lessor prior to such modification, cancellation, or abrogation, including, but not limited to, bonuses, rentals and royalties.

NOTE: The Office of Mineral Resources will require a minimum bonus of \$230 per acre and a minimum royalty of 23%.

NOTE: The Department of Wildlife and Fisheries has designated certain areas in the coastal waters of the State of Louisiana as Oyster Seed Bed Areas. The exact location of those Seed Bed Areas must be obtained from the Department of Wildlife and Fisheries and any work done under a mineral lease from the State of Louisiana may necessarily be conducted in conformity with the rules and regulations promulgated by the said Department of Wildlife and Fisheries for Oyster Seed Bed Areas.

NOTE: The State of Louisiana does hereby reserve, and this lease shall be subject to, the imprescriptible right of surface use in the nature of a servitude in favor of the Department of Natural Resources, including its Offices and Commissions, for the sole purpose of implementing, constructing, servicing and maintaining approved coastal zone management and/or restoration projects. Utilization of any and all rights derived under this lease by the mineral lessee, its agents, successors or assigns, shall not interfere with nor hinder the reasonable surface use by the Department of Natural Resources, its Offices or Commissions, as herein above reserved.

Applicant: Noxxe Energy

Bidder	Cash Payment	Price / Acre	Rental	Oil	Gas	Other

LAKE BORGNE



Light

SL 17542

TR 35017
1,391 ± ACS.
NOV., 2002

Sh. Beach Bo

Bayou

78

P.O.B.
X = 2,495,217.80
Y = 461,926.51

BAYOU

Lights

CAMP

GRAND

BAYOU

Light



0' SCALE 3000'

ST. BERNARD PARISH , LA

TRACT 35018 - St. Bernard Parish, Louisiana

All of the lands now or formerly constituting the beds and bottoms of all water bodies of every nature and description, and all islands and other lands formed by accretion, where allowed by law, or by reliction, and excepting tax adjudicated lands, belonging to the State of Louisiana and not presently under mineral lease on November 13, 2002, situated in St. Bernard Parish, Louisiana, and more particularly described as follows: Beginning at a point having Coordinates of X = 2,495,217.80 and Y = 461,926.51; thence South 14,758.05 feet to a point having Coordinates of X = 2,495,217.80 and Y = 447,168.46; thence West 14,758.05 feet to a point having Coordinates of X = 2,480,459.75 and Y = 447,168.46; thence North 14,758.05 feet to a point having Coordinates of X = 2,480,459.75 and Y = 461,926.51; thence East 14,758.05 feet to the point of beginning, containing approximately **52 acres**, all as more particularly outlined on a plat on file in the Office of Mineral Resources, Department of Natural Resources, as provided by the applicant. All bearings, distances and coordinates are based on Louisiana Coordinate System of 1927, (North or South Zone), where applicable.

NOTE: The above description of the Tract nominated for lease has been provided and corrected, where required, exclusively by the nomination party. Any mineral lease selected from this Tract and awarded by the Louisiana State Mineral Board shall be without warranty of any kind, either express, implied, or statutory, including, but not limited to, the implied warranties of merchantability and fitness for a particular purpose. Should the mineral lease awarded by the Louisiana State Mineral Board be subsequently modified, cancelled or abrogated due to the existence of conflicting leases, operating agreements, private claims or other future obligations or conditions which may affect all or any portion of the leased Tract, it shall not relieve the Lessee of the obligation to pay any bonus due thereon to the Louisiana State Mineral Board, nor shall the Louisiana State Mineral Board be obligated to refund any consideration paid by the Lessor prior to such modification, cancellation, or abrogation, including, but not limited to, bonuses, rentals and royalties.

NOTE: The Office of Mineral Resources will require a minimum bonus of \$230 per acre and a minimum royalty of 23%.

NOTE: The above Tract is located upon a restricted scenic river and all operations in this area must be conducted in strict conformity with the regulations of the Corps of Engineers, U.S. Army.

NOTE: The Department of Wildlife and Fisheries has designated certain areas in the coastal waters of the State of Louisiana as Oyster Seed Bed Areas. The exact location of those Seed Bed Areas must be obtained from the Department of Wildlife and Fisheries and any work done under a mineral lease from the State of Louisiana may necessarily be conducted in

conformity with the rules and regulations promulgated by the said Department of Wildlife and Fisheries for Oyster Seed Bed Areas.

NOTE: The State of Louisiana does hereby reserve, and this lease shall be subject to, the imprescriptible right of surface use in the nature of a servitude in favor of the Department of Natural Resources, including its Offices and Commissions, for the sole purpose of implementing, constructing, servicing and maintaining approved coastal zone management and/or restoration projects. Utilization of any and all rights derived under this lease by the mineral lessee, its agents, successors or assigns, shall not interfere with nor hinder the reasonable surface use by the Department of Natural Resources, its Offices or Commissions, as herein above reserved.

Applicant: Noxxe Energy

Bidder	Cash Payment	Price / Acre	Rental	Oil	Gas	Other

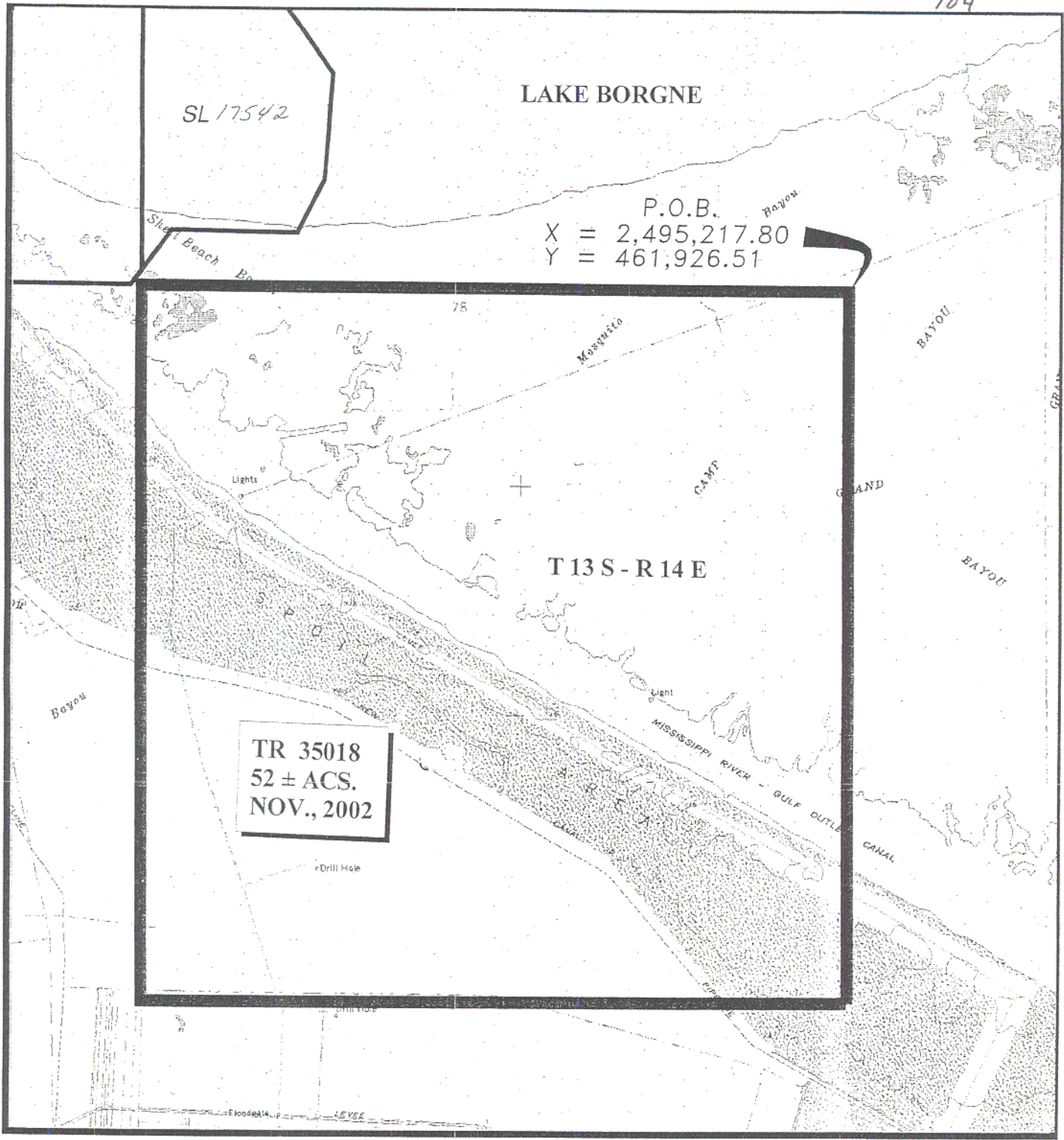
SL 17542

LAKE BORGNE

P.O.B.
X = 2,495,217.80
Y = 461,926.51

T 13 S - R 14 E

TR 35018
52 ± ACS.
NOV., 2002



TRACT 35019 - Orleans and St. Bernard Parishes, Louisiana

All of the lands now or formerly constituting the beds and bottoms of all water bodies of every nature and description, and all islands and other lands formed by accretion, where allowed by law, or by reliction, and excepting tax adjudicated lands, belonging to the State of Louisiana and not presently under mineral lease on November 13, 2002, situated in Orleans and St. Bernard Parishes, Louisiana, and more particularly described as follows: Beginning at a point having Coordinates of X = 2,495,217.80 and Y = 513,550.46; thence East 14,758.06 feet to a point having Coordinates of X = 2,509,975.86 and Y = 513,550.46; thence South 7,349.81 feet to a point having Coordinates of X = 2,509,975.86 and Y = 506,200.65; thence West 14,758.06 feet to a point having Coordinates of X = 2,495,217.80 and Y = 506,200.65; thence North 7,349.81 feet to the point of beginning, containing approximately **440 acres**, all as more particularly outlined on a plat on file in the Office of Mineral Resources, Department of Natural Resources, as provided by the applicant. All bearings, distances and coordinates are based on Louisiana Coordinate System of 1927, (North or South Zone), where applicable.

NOTE: The above description of the Tract nominated for lease has been provided and corrected, where required, exclusively by the nomination party. Any mineral lease selected from this Tract and awarded by the Louisiana State Mineral Board shall be without warranty of any kind, either express, implied, or statutory, including, but not limited to, the implied warranties of merchantability and fitness for a particular purpose. Should the mineral lease awarded by the Louisiana State Mineral Board be subsequently modified, cancelled or abrogated due to the existence of conflicting leases, operating agreements, private claims or other future obligations or conditions which may affect all or any portion of the leased Tract, it shall not relieve the Lessee of the obligation to pay any bonus due thereon to the Louisiana State Mineral Board, nor shall the Louisiana State Mineral Board be obligated to refund any consideration paid by the Lessor prior to such modification, cancellation, or abrogation, including, but not limited to, bonuses, rentals and royalties.

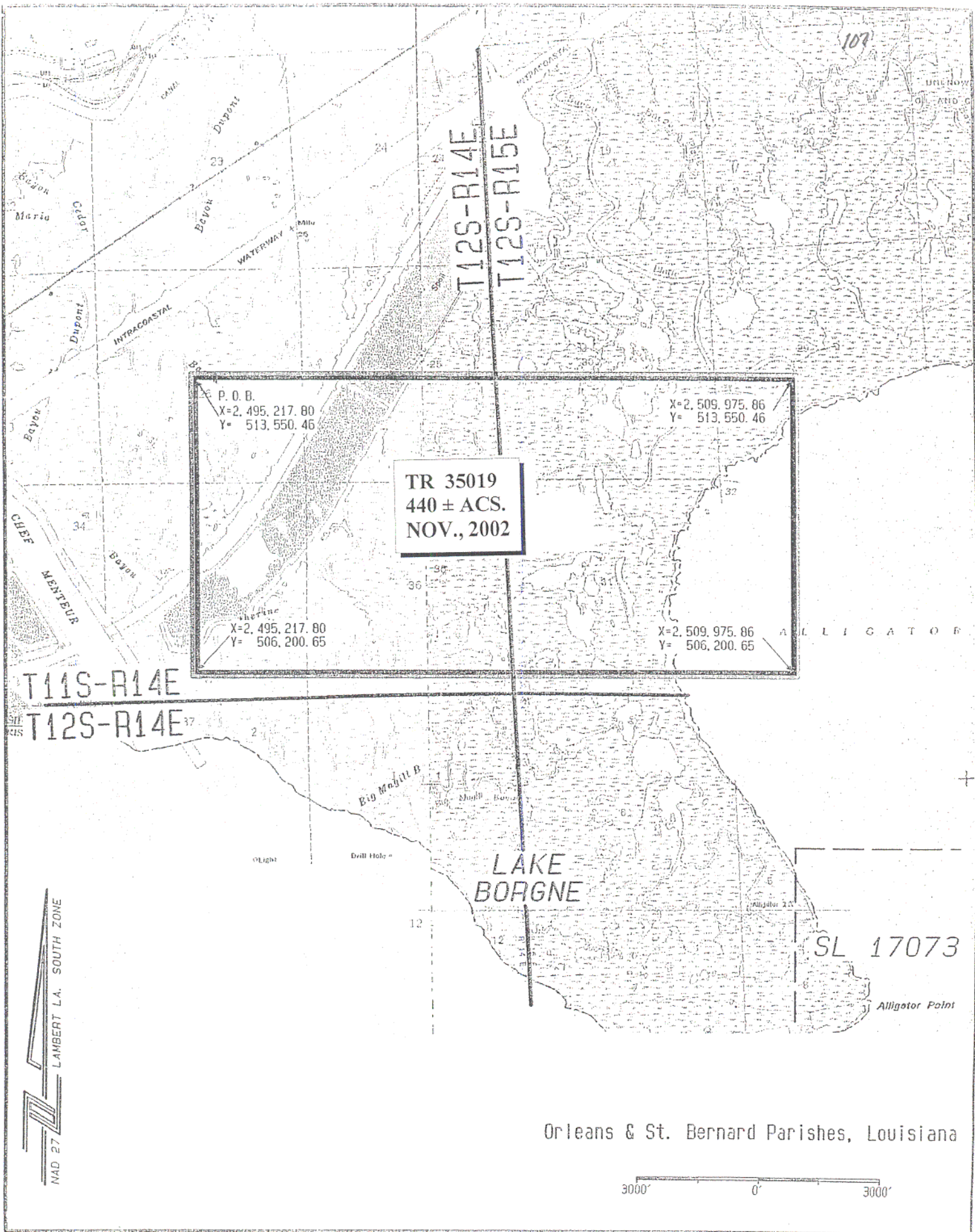
NOTE: The Office of Mineral Resources will require a minimum bonus of \$230 per acre and a minimum royalty of 23%.

NOTE: The Department of Wildlife and Fisheries has designated certain areas in the coastal waters of the State of Louisiana as Oyster Seed Bed Areas. The exact location of those Seed Bed Areas must be obtained from the Department of Wildlife and Fisheries and any work done under a mineral lease from the State of Louisiana may necessarily be conducted in conformity with the rules and regulations promulgated by the said Department of Wildlife and Fisheries for Oyster Seed Bed Areas.

NOTE: The State of Louisiana does hereby reserve, and this lease shall be subject to, the imprescriptible right of surface use in the nature of a servitude in favor of the Department of Natural Resources, including its Offices and Commissions, for the sole purpose of implementing, constructing, servicing and maintaining approved coastal zone management and/or restoration projects. Utilization of any and all rights derived under this lease by the mineral lessee, its agents, successors or assigns, shall not interfere with nor hinder the reasonable surface use by the Department of Natural Resources, its Offices or Commissions, as herein above reserved.

Applicant: Noxxe Energy

Bidder	Cash Payment	Price / Acre	Rental	Oil	Gas	Other



P. O. B.
X=2,495,217.80
Y= 513,550.46

X=2,509,975.86
Y= 513,550.46

TR 35019
440 ± ACS.
NOV., 2002

X=2,495,217.80
Y= 506,200.65

X=2,509,975.86
Y= 506,200.65

NAD 27 LAMBERT L.A. SOUTH ZONE

Orleans & St. Bernard Parishes, Louisiana

3000' 0' 3000'

TRACT 35020 - Orleans and St. Bernard Parishes, Louisiana

All of the lands now or formerly constituting the beds and bottoms of all water bodies of every nature and description, and all islands and other lands formed by accretion, where allowed by law, or by reliction, and excepting tax adjudicated lands, belonging to the State of Louisiana and not presently under mineral lease on November 13, 2002, situated in Orleans and St. Bernard Parishes, Louisiana, and more particularly described as follows: Beginning at a point having Coordinates of X = 2,495,217.80 and Y = 498,821.63; thence North 7,379.02 feet to a point having Coordinates of X = 2,495,217.80 and Y = 506,200.65; thence East 14,758.06 feet to a point having Coordinates of X = 2,509,975.86 and Y = 506,200.65; thence South 4,314.58 feet to the Northwest corner of State Lease No. 17073 having Coordinates of X = 2,509,975.86 and Y = 501,886.07; thence South 3,064.44 feet along the West line of said State Lease No. 17073 to a point having Coordinates of X = 2,509,975.86 and Y = 498,821.63; thence West 14,758.06 feet to the point of beginning, containing approximately **949 acres**, all as more particularly outlined on a plat on file in the Office of Mineral Resources, Department of Natural Resources, as provided by the applicant. All bearings, distances and coordinates are based on Louisiana Coordinate System of 1927, (North or South Zone), where applicable.

NOTE: The above description of the Tract nominated for lease has been provided and corrected, where required, exclusively by the nomination party. Any mineral lease selected from this Tract and awarded by the Louisiana State Mineral Board shall be without warranty of any kind, either express, implied, or statutory, including, but not limited to, the implied warranties of merchantability and fitness for a particular purpose. Should the mineral lease awarded by the Louisiana State Mineral Board be subsequently modified, cancelled or abrogated due to the existence of conflicting leases, operating agreements, private claims or other future obligations or conditions which may affect all or any portion of the leased Tract, it shall not relieve the Lessee of the obligation to pay any bonus due thereon to the Louisiana State Mineral Board, nor shall the Louisiana State Mineral Board be obligated to refund any consideration paid by the Lessor prior to such modification, cancellation, or abrogation, including, but not limited to, bonuses, rentals and royalties.

NOTE: The Office of Mineral Resources will require a minimum bonus of \$230 per acre and a minimum royalty of 23%.

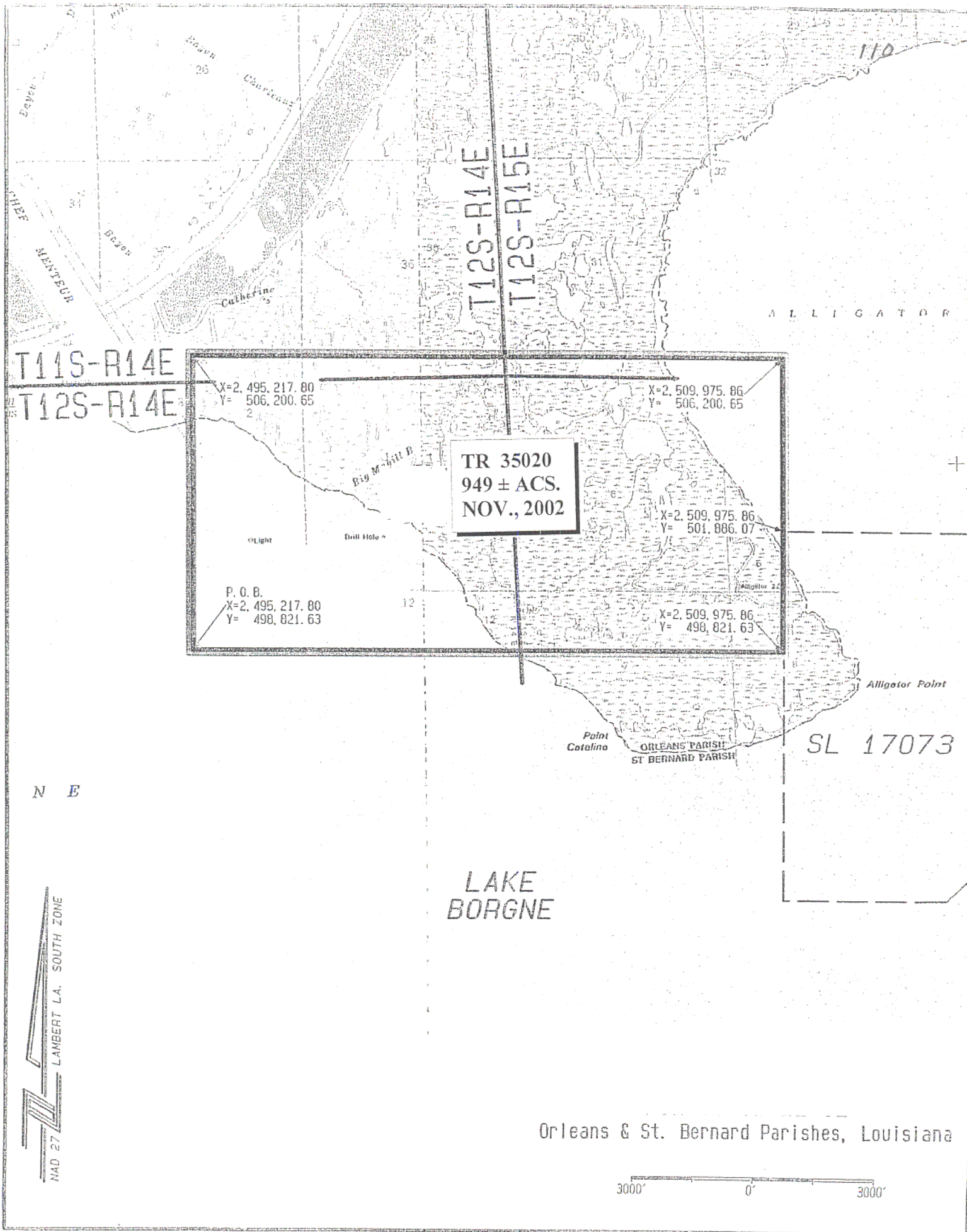
NOTE: The Department of Wildlife and Fisheries has designated certain areas in the coastal waters of the State of Louisiana as Oyster Seed Bed Areas. The exact location of those Seed Bed Areas must be obtained from the Department of Wildlife and Fisheries and any work done under a mineral lease from the State of Louisiana may necessarily be conducted in

conformity with the rules and regulations promulgated by the said Department of Wildlife and Fisheries for Oyster Seed Bed Areas.

NOTE: The State of Louisiana does hereby reserve, and this lease shall be subject to, the imprescriptible right of surface use in the nature of a servitude in favor of the Department of Natural Resources, including its Offices and Commissions, for the sole purpose of implementing, constructing, servicing and maintaining approved coastal zone management and/or restoration projects. Utilization of any and all rights derived under this lease by the mineral lessee, its agents, successors or assigns, shall not interfere with nor hinder the reasonable surface use by the Department of Natural Resources, its Offices or Commissions, as herein above reserved.

Applicant: Noxxe Energy

Bidder	Cash Payment	Price / Acre	Rental	Oil	Gas	Other



T11S-R14E

T12S-R14E

T12S-R14E

T12S-R15E

TR 35020
949 ± ACS.
NOV., 2002

X=2,495,217.80
Y= 506,200.65

X=2,509,975.86
Y= 506,200.65

P. O. B.
X=2,495,217.80
Y= 498,821.63

X=2,509,975.86
Y= 501,886.07

X=2,509,975.86
Y= 498,821.63

SL 17073

LAKE
BORGNE

Orleans & St. Bernard Parishes, Louisiana

3000' 0' 3000'

NAD 27 LAMBERT LA. SOUTH ZONE

N E

TRACT 35021 - Orleans and St. Bernard Parishes, Louisiana

All of the lands now or formerly constituting the beds and bottoms of all water bodies of every nature and description, and all islands and other lands formed by accretion, where allowed by law, or by reliction, and excepting tax adjudicated lands, belonging to the State of Louisiana and not presently under mineral lease on November 13, 2002, situated in Orleans and St. Bernard Parishes, Louisiana, and more particularly described as follows: Beginning at a point having Coordinates of X = 2,495,217.80 and Y = 498,821.63; thence East 14,758.06 feet to a point on the West line of State Lease No. 17073 having Coordinates of X = 2,509,975.86 and Y = 498,821.63; thence South 6,113.18 feet along the West line of said State Lease No. 17073 to its Southwest corner having Coordinates of X = 2,509,975.86 and Y = 492,708.45; thence South 1,265.85 feet to a point having Coordinates of X = 2,509,975.86 and Y = 491,442.60; thence West 14,758.06 feet to a point having Coordinates of X = 2,495,217.80 and Y = 491,442.60; thence North 7,379.03 feet to the point of beginning, containing approximately **2,247 acres**, all as more particularly outlined on a plat on file in the Office of Mineral Resources, Department of Natural Resources, as provided by the applicant. All bearings, distances and coordinates are based on Louisiana Coordinate System of 1927, (North or South Zone), where applicable.

NOTE: The above description of the Tract nominated for lease has been provided and corrected, where required, exclusively by the nomination party. Any mineral lease selected from this Tract and awarded by the Louisiana State Mineral Board shall be without warranty of any kind, either express, implied, or statutory, including, but not limited to, the implied warranties of merchantability and fitness for a particular purpose. Should the mineral lease awarded by the Louisiana State Mineral Board be subsequently modified, cancelled or abrogated due to the existence of conflicting leases, operating agreements, private claims or other future obligations or conditions which may affect all or any portion of the leased Tract, it shall not relieve the Lessee of the obligation to pay any bonus due thereon to the Louisiana State Mineral Board, nor shall the Louisiana State Mineral Board be obligated to refund any consideration paid by the Lessor prior to such modification, cancellation, or abrogation, including, but not limited to, bonuses, rentals and royalties.

NOTE: The Office of Mineral Resources will require a minimum bonus of \$230 per acre and a minimum royalty of 23%.

NOTE: The Department of Wildlife and Fisheries has designated certain areas in the coastal waters of the State of Louisiana as Oyster Seed Bed Areas. The exact location of those Seed Bed Areas must be obtained from the Department of Wildlife and Fisheries and any work done under a mineral lease from the State of Louisiana may necessarily be conducted in

conformity with the rules and regulations promulgated by the said Department of Wildlife and Fisheries for Oyster Seed Bed Areas.

NOTE: The State of Louisiana does hereby reserve, and this lease shall be subject to, the imprescriptible right of surface use in the nature of a servitude in favor of the Department of Natural Resources, including its Offices and Commissions, for the sole purpose of implementing, constructing, servicing and maintaining approved coastal zone management and/or restoration projects. Utilization of any and all rights derived under this lease by the mineral lessee, its agents, successors or assigns, shall not interfere with nor hinder the reasonable surface use by the Department of Natural Resources, its Offices or Commissions, as herein above reserved.

Applicant: Noxxe Energy

Bidder	Cash Payment	Price / Acre	Rental	Oil	Gas	Other

T11S-R14E

113

MISSISSIPPI PARISH T12S-R14E

Big Mouth P.

T12S-R14E

T12S-R15E

Light

Drill Hole

12

SL 17073

P. O. B.
X=2,495,217.80
Y= 498,821.63

X=2,509,975.86
Y= 498,821.63

Alligator Point

Point Catalina

ORLEANS PARISH
ST BERNARD PARISH

G N E

TR 35021
2,247 ± ACS.
NOV., 2002

X=2,495,217.80
Y= 491,442.60

X=2,509,975.86
Y= 492,708.45

X=2,509,975.86
Y= 491,442.60

LAKE BORGNE

SL 17143

SL 17144

HAD 27 LAMBERT L.A. SOUTH ZONE

Orleans & St. Bernard Parishes, Louisiana

3000' 0' 3000'

TRACT 35022 - Lake Borgne Area, St. Bernard Parish, Louisiana

All of the lands now or formerly constituting the beds and bottoms of all water bodies of every nature and description, and all islands and other lands formed by accretion, where allowed by law, or by reliction, and excepting tax adjudicated lands, belonging to the State of Louisiana and not presently under mineral lease on November 13, 2002, situated in St. Bernard Parish, Louisiana, and more particularly described as follows: Beginning at a point having Coordinates of X = 2,509,975.86 and Y = 491,442.60; thence South 711.77 feet to the Northeast corner of State Lease No. 17543 and the Northwest corner of State Lease No. 17546 having Coordinates of X = 2,509,975.86 and Y = 490,730.83; thence along the boundaries of State Lease No. 17543 the following courses: West 1,578.37 feet, South 43 degrees 26 minutes 43 seconds West 3,338.16 feet, South 1,587.16 feet, South 37 degrees 35 seconds 48 minutes East 2,002.38 feet, East 2,652.24 feet to the Southeast corner of State Lease No. 17543 having Coordinates of X = 2,509,975.86 and Y = 485,133.55; thence South 1,070.00 feet along the West line of State Lease No. 17143 to its Southwest corner, also being the Northwest corner of State Lease No. 17144, having Coordinates of X = 2,509,975.86 and Y = 484,063.58; thence West 14,758.06 feet to a point having Coordinates of X = 2,495,217.80 and Y = 484,063.58; thence North 7,379.02 feet to a point having Coordinates of X = 2,495,217.80 and Y = 491,442.60; thence East 14,758.06 feet to the point of beginning, containing approximately **2,088.33 acres**, all as more particularly outlined on a plat on file in the Office of Mineral Resources, Department of Natural Resources, as provided by the applicant. All bearings, distances and coordinates are based on Louisiana Coordinate System of 1927, (North or South Zone), where applicable.

NOTE: The above description of the Tract nominated for lease has been provided and corrected, where required, exclusively by the nomination party. Any mineral lease selected from this Tract and awarded by the Louisiana State Mineral Board shall be without warranty of any kind, either express, implied, or statutory, including, but not limited to, the implied warranties of merchantability and fitness for a particular purpose. Should the mineral lease awarded by the Louisiana State Mineral Board be subsequently modified, cancelled or abrogated due to the existence of conflicting leases, operating agreements, private claims or other future obligations or conditions which may affect all or any portion of the leased Tract, it shall not relieve the Lessee of the obligation to pay any bonus due thereon to the Louisiana State Mineral Board, nor shall the Louisiana State Mineral Board be obligated to refund any consideration paid by the Lessor prior to such modification, cancellation, or abrogation, including, but not limited to, bonuses, rentals and royalties.

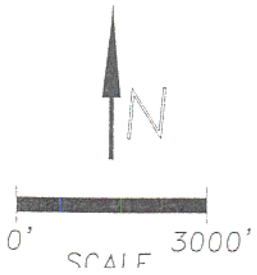
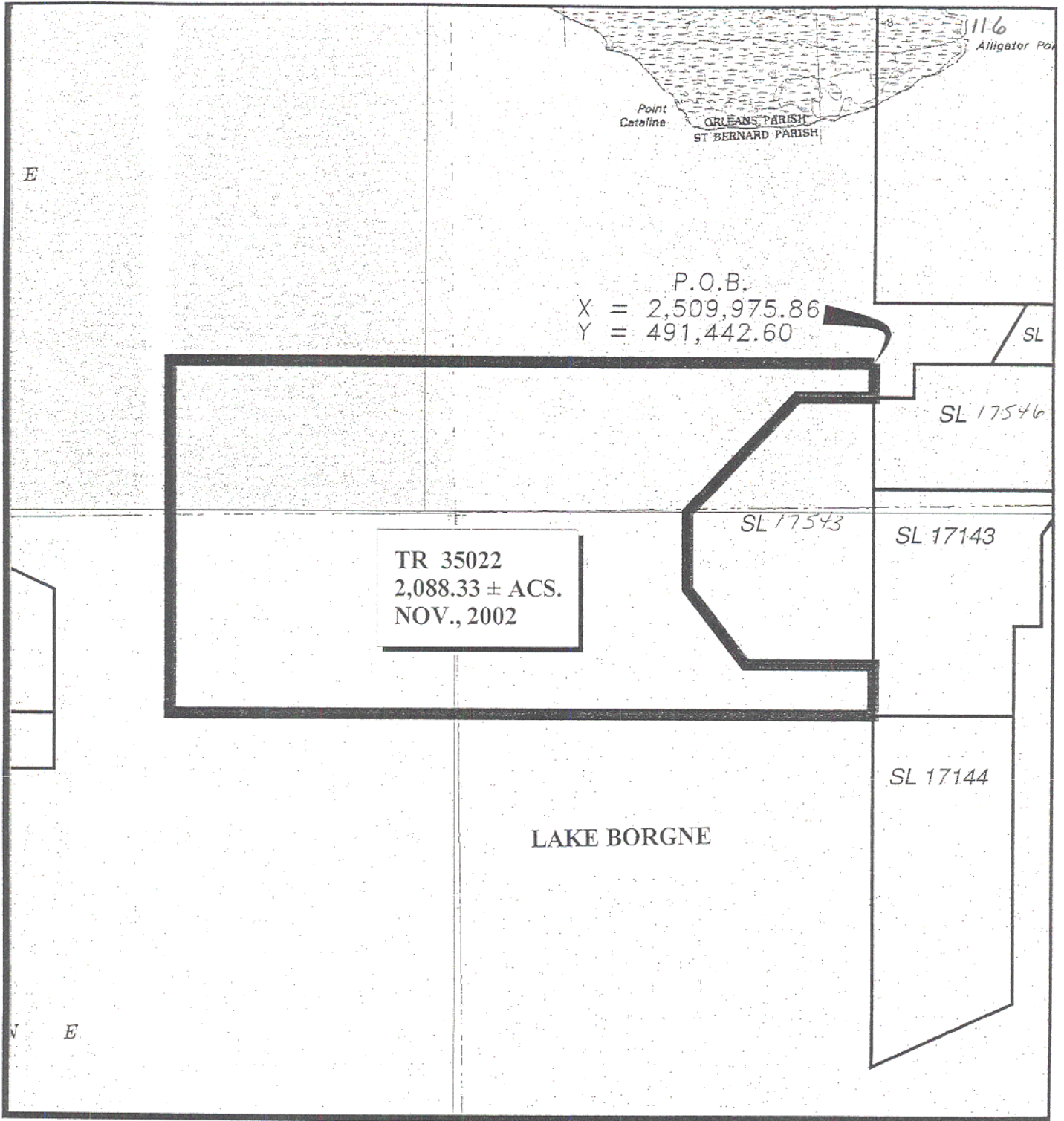
NOTE: The Office of Mineral Resources will require a minimum bonus of \$230 per acre and a minimum royalty of 23%.

NOTE: The Department of Wildlife and Fisheries has designated certain areas in the coastal waters of the State of Louisiana as Oyster Seed Bed Areas. The exact location of those Seed Bed Areas must be obtained from the Department of Wildlife and Fisheries and any work done under a mineral lease from the State of Louisiana may necessarily be conducted in conformity with the rules and regulations promulgated by the said Department of Wildlife and Fisheries for Oyster Seed Bed Areas.

NOTE: The State of Louisiana does hereby reserve, and this lease shall be subject to, the imprescriptible right of surface use in the nature of a servitude in favor of the Department of Natural Resources, including its Offices and Commissions, for the sole purpose of implementing, constructing, servicing and maintaining approved coastal zone management and/or restoration projects. Utilization of any and all rights derived under this lease by the mineral lessee, its agents, successors or assigns, shall not interfere with nor hinder the reasonable surface use by the Department of Natural Resources, its Offices or Commissions, as herein above reserved.

Applicant: Noxxe Energy

Bidder	Cash Payment	Price / Acre	Rental	Oil	Gas	Other



ST. BERNARD PARISH, LA

TRACT 35023 - Lake Borgne Area, St. Bernard Parish, Louisiana

All of the lands now or formerly constituting the beds and bottoms of all water bodies of every nature and description, and all islands and other lands formed by accretion, where allowed by law, or by reliction, and excepting tax adjudicated lands, belonging to the State of Louisiana and not presently under mineral lease on November 13, 2002, situated in St. Bernard Parish, Louisiana, and more particularly described as follows: Beginning at a point having Coordinates of X = 2,509,975.86 and Y = 476,684.56; thence West 14,758.06 feet to a point having Coordinates of X = 2,495,217.80 and Y = 476,684.56; thence North 7,379.02 feet to a point having Coordinates of X = 2,495,217.80 and Y = 484,063.58; thence East 14,758.06 feet to a point being the Southwest corner State Lease No. 17143 and the Northwest corner of State Lease No. 17144 having Coordinates of X = 2,509,975.86 and Y = 484,063.58; thence South 7,379.02 feet along said State Lease No. 17144 to the point of beginning, containing approximately **2,500.00 acres**, all as more particularly outlined on a plat on file in the Office of Mineral Resources, Department of Natural Resources, as provided by the applicant. All bearings, distances and coordinates are based on Louisiana Coordinate System of 1927, (North or South Zone), where applicable.

NOTE: The above description of the Tract nominated for lease has been provided and corrected, where required, exclusively by the nomination party. Any mineral lease selected from this Tract and awarded by the Louisiana State Mineral Board shall be without warranty of any kind, either express, implied, or statutory, including, but not limited to, the implied warranties of merchantability and fitness for a particular purpose. Should the mineral lease awarded by the Louisiana State Mineral Board be subsequently modified, cancelled or abrogated due to the existence of conflicting leases, operating agreements, private claims or other future obligations or conditions which may affect all or any portion of the leased Tract, it shall not relieve the Lessee of the obligation to pay any bonus due thereon to the Louisiana State Mineral Board, nor shall the Louisiana State Mineral Board be obligated to refund any consideration paid by the Lessor prior to such modification, cancellation, or abrogation, including, but not limited to, bonuses, rentals and royalties.

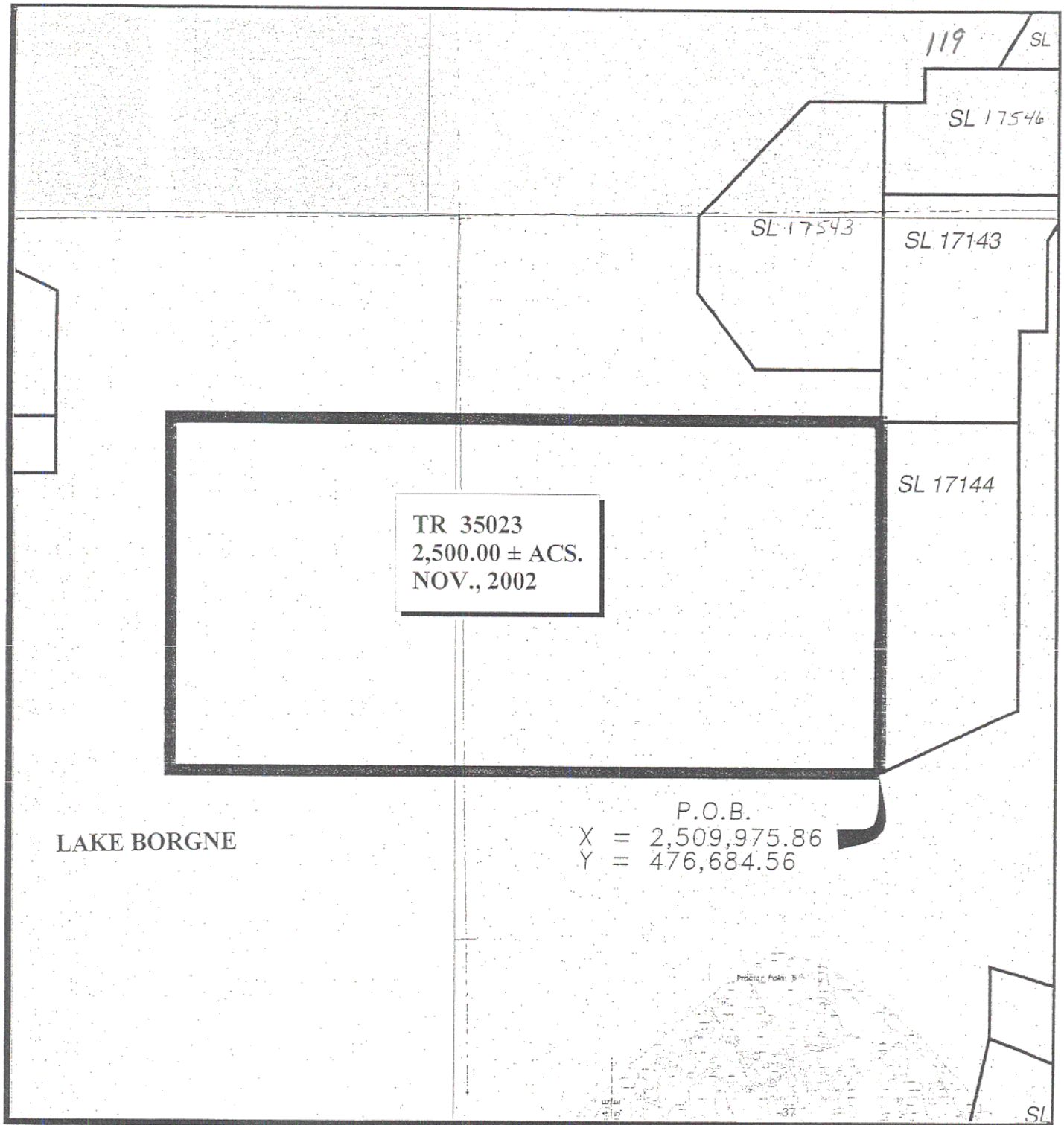
NOTE: The Office of Mineral Resources will require a minimum bonus of \$230 per acre and a minimum royalty of 23%.

NOTE: The Department of Wildlife and Fisheries has designated certain areas in the coastal waters of the State of Louisiana as Oyster Seed Bed Areas. The exact location of those Seed Bed Areas must be obtained from the Department of Wildlife and Fisheries and any work done under a mineral lease from the State of Louisiana may necessarily be conducted in conformity with the rules and regulations promulgated by the said Department of Wildlife and Fisheries for Oyster Seed Bed Areas.

NOTE: The State of Louisiana does hereby reserve, and this lease shall be subject to, the imprescriptible right of surface use in the nature of a servitude in favor of the Department of Natural Resources, including its Offices and Commissions, for the sole purpose of implementing, constructing, servicing and maintaining approved coastal zone management and/or restoration projects. Utilization of any and all rights derived under this lease by the mineral lessee, its agents, successors or assigns, shall not interfere with nor hinder the reasonable surface use by the Department of Natural Resources, its Offices or Commissions, as herein above reserved.

Applicant: Noxxe Energy

Bidder	Cash Payment	Price / Acre	Rental	Oil	Gas	Other



0' SCALE 3000'

TRACT 35024 - St. Bernard Parish, Louisiana

All of the lands now or formerly constituting the beds and bottoms of all water bodies of every nature and description, and all islands and other lands formed by accretion, where allowed by law, or by reliction, and excepting tax adjudicated lands, belonging to the State of Louisiana and not presently under mineral lease on November 13, 2002, situated in St. Bernard Parish, Louisiana, and more particularly described as follows: Beginning at a point having Coordinates of X = 2,495,217.80 and Y = 476,684.56; thence East 14,758.06 feet to the Southwest corner of State Lease No. 17144 having Coordinates of X = 2,509,975.86 and Y = 476,684.56; thence South 7,379.03 feet to a point having Coordinates of X = 2,509,975.86 and Y = 469,305.53; thence West 14,758.06 feet to a point having Coordinates of X = 2,495,217.80 and Y = 469,305.53; thence North 7,379.03 feet to the point of beginning, containing approximately **2,150 acres**, all as more particularly outlined on a plat on file in the Office of Mineral Resources, Department of Natural Resources, as provided by the applicant. All bearings, distances and coordinates are based on Louisiana Coordinate System of 1927, (North or South Zone), where applicable.

NOTE: The above description of the Tract nominated for lease has been provided and corrected, where required, exclusively by the nomination party. Any mineral lease selected from this Tract and awarded by the Louisiana State Mineral Board shall be without warranty of any kind, either express, implied, or statutory, including, but not limited to, the implied warranties of merchantability and fitness for a particular purpose. Should the mineral lease awarded by the Louisiana State Mineral Board be subsequently modified, cancelled or abrogated due to the existence of conflicting leases, operating agreements, private claims or other future obligations or conditions which may affect all or any portion of the leased Tract, it shall not relieve the Lessee of the obligation to pay any bonus due thereon to the Louisiana State Mineral Board, nor shall the Louisiana State Mineral Board be obligated to refund any consideration paid by the Lessor prior to such modification, cancellation, or abrogation, including, but not limited to, bonuses, rentals and royalties.

NOTE: The Office of Mineral Resources will require a minimum bonus of \$230 per acre and a minimum royalty of 23%.

NOTE: The Department of Wildlife and Fisheries has designated certain areas in the coastal waters of the State of Louisiana as Oyster Seed Bed Areas. The exact location of those Seed Bed Areas must be obtained from the Department of Wildlife and Fisheries and any work done under a mineral lease from the State of Louisiana may necessarily be conducted in conformity with the rules and regulations promulgated by the said Department of Wildlife and Fisheries for Oyster Seed Bed Areas.

NOTE: The State of Louisiana does hereby reserve, and this lease shall be subject to, the imprescriptible right of surface use in the nature of a servitude in favor of the Department of Natural Resources, including its Offices and Commissions, for the sole purpose of implementing, constructing, servicing and maintaining approved coastal zone management and/or restoration projects. Utilization of any and all rights derived under this lease by the mineral lessee, its agents, successors or assigns, shall not interfere with nor hinder the reasonable surface use by the Department of Natural Resources, its Offices or Commissions, as herein above reserved.

Applicant: Noxxe Energy

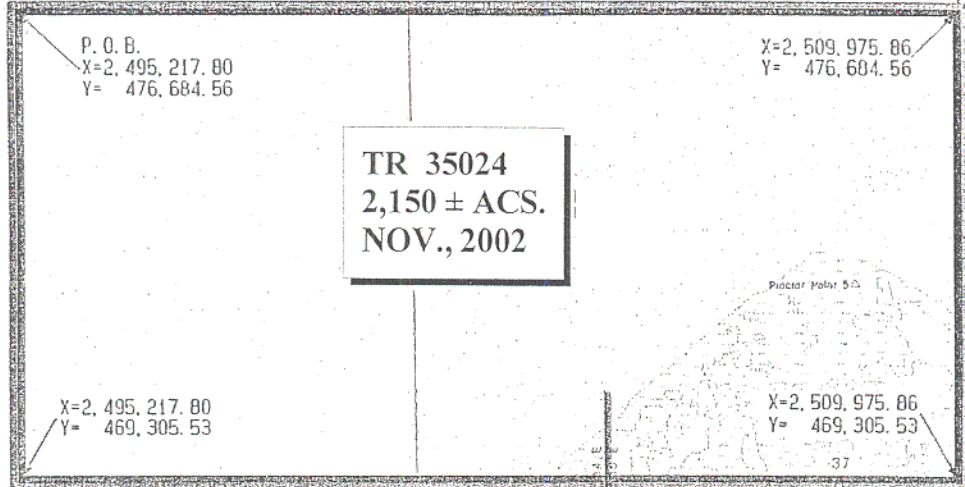
Bidder	Cash Payment	Price / Acre	Rental	Oil	Gas	Other

SL¹²²
17143

SL
17144

LAKE
BORGNE

N E



SL 17145

SL
17011

T13S-R14E
T13S-R15E

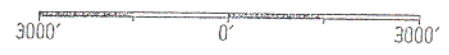
NAD 27
LAMBERT LA. SOUTH ZONE

BAYOU

BAYOU

BAYOU

St. Bernard Parish, Louisiana



TRACT 35025 - St. Bernard Parish, Louisiana

All of the lands now or formerly constituting the beds and bottoms of all water bodies of every nature and description, and all islands and other lands formed by accretion, where allowed by law, or by reliction, and excepting tax adjudicated lands, belonging to the State of Louisiana and not presently under mineral lease on November 13, 2002, situated in St. Bernard Parish, Louisiana, and more particularly described as follows: Beginning at a point having Coordinates of X = 2,495,217.80 and Y = 461,926.51; thence North 7,379.02 feet to a point having Coordinates of X = 2,495,217.80 and Y = 469,305.53; thence East 14,758.06 feet to a point having Coordinates of X = 2,509,975.86 and Y = 469,305.53; thence South 7,379.02 feet to a point having Coordinates of X = 2,509,975.86 and Y = 461,926.51; thence West 14,758.06 feet to the point of beginning, containing approximately **1,094 acres**, all as more particularly outlined on a plat on file in the Office of Mineral Resources, Department of Natural Resources, as provided by the applicant. All bearings, distances and coordinates are based on Louisiana Coordinate System of 1927, (North or South Zone), where applicable.

NOTE: The above description of the Tract nominated for lease has been provided and corrected, where required, exclusively by the nomination party. Any mineral lease selected from this Tract and awarded by the Louisiana State Mineral Board shall be without warranty of any kind, either express, implied, or statutory, including, but not limited to, the implied warranties of merchantability and fitness for a particular purpose. Should the mineral lease awarded by the Louisiana State Mineral Board be subsequently modified, cancelled or abrogated due to the existence of conflicting leases, operating agreements, private claims or other future obligations or conditions which may affect all or any portion of the leased Tract, it shall not relieve the Lessee of the obligation to pay any bonus due thereon to the Louisiana State Mineral Board, nor shall the Louisiana State Mineral Board be obligated to refund any consideration paid by the Lessor prior to such modification, cancellation, or abrogation, including, but not limited to, bonuses, rentals and royalties.

NOTE: The Office of Mineral Resources will require a minimum bonus of \$230 per acre and a minimum royalty of 23%.

NOTE: The State of Louisiana does hereby reserve, and this lease shall be subject to, the imprescriptible right of surface use in the nature of a servitude in favor of the Department of Natural Resources, including its Offices and Commissions, for the sole purpose of implementing, constructing, servicing and maintaining approved coastal zone management and/or restoration projects. Utilization of any and all rights derived under this lease by the mineral lessee, its agents, successors or assigns, shall not interfere with nor hinder the reasonable surface use by the

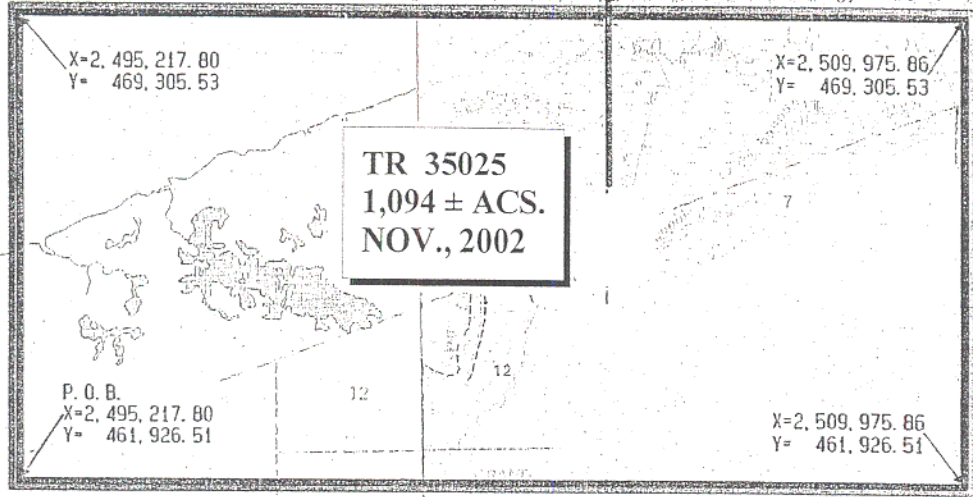
Department of Natural Resources, its Offices or Commissions, as herein above reserved.

Applicant: Noxxe Energy

Bidder	Cash Payment	Price / Acre	Rental	Oil	Gas	Other

SL 17145

Proctor Point Sta.



TR 35025
1,094 ± ACS.
NOV., 2002

X=2,495,217.80
 Y= 469,305.53

X=2,509,975.86
 Y= 469,305.53

P. O. B.
 X=2,495,217.80
 Y= 461,926.51

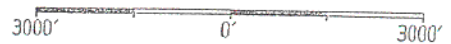
X=2,509,975.86
 Y= 461,926.51

SL 17011

LAKE BORGNE

T13S-R14E
 T13S-R15E

St. Bernard Parish, Louisiana



NAD 27 LAMBERT LA. SOUTH ZONE



TRACT 35026 - St. Bernard Parish, Louisiana

All of the lands now or formerly constituting the beds and bottoms of all water bodies of every nature and description, and all islands and other lands formed by accretion, where allowed by law, or by reliction, and excepting tax adjudicated lands, belonging to the State of Louisiana and not presently under mineral lease on November 13, 2002, situated in St. Bernard Parish, Louisiana, and more particularly described as follows: Beginning at a point having Coordinates of X = 2,495,217.80 and Y = 461,926.51; thence East 14,758.06 feet to a point having Coordinates of X = 2,509,975.86 and Y = 461,926.51; thence South 14,758.05 feet to a point having Coordinates of X = 2,509,975.86 and Y = 447,168.46; thence West 14,758.06 feet to a point having Coordinates of X = 2,495,217.80 and Y = 447,168.46; thence North 14,758.05 feet to the point of beginning, containing approximately **1,819 acres**, all as more particularly outlined on a plat on file in the Office of Mineral Resources, Department of Natural Resources, as provided by the applicant. All bearings, distances and coordinates are based on Louisiana Coordinate System of 1927, (North or South Zone), where applicable.

NOTE: The above description of the Tract nominated for lease has been provided and corrected, where required, exclusively by the nomination party. Any mineral lease selected from this Tract and awarded by the Louisiana State Mineral Board shall be without warranty of any kind, either express, implied, or statutory, including, but not limited to, the implied warranties of merchantability and fitness for a particular purpose. Should the mineral lease awarded by the Louisiana State Mineral Board be subsequently modified, cancelled or abrogated due to the existence of conflicting leases, operating agreements, private claims or other future obligations or conditions which may affect all or any portion of the leased Tract, it shall not relieve the Lessee of the obligation to pay any bonus due thereon to the Louisiana State Mineral Board, nor shall the Louisiana State Mineral Board be obligated to refund any consideration paid by the Lessor prior to such modification, cancellation, or abrogation, including, but not limited to, bonuses, rentals and royalties.

NOTE: The Office of Mineral Resources will require a minimum bonus of \$230 per acre and a minimum royalty of 23%.

NOTE: The Department of Wildlife and Fisheries has designated certain areas in the coastal waters of the State of Louisiana as Oyster Seed Bed Areas. The exact location of those Seed Bed Areas must be obtained from the Department of Wildlife and Fisheries and any work done under a mineral lease from the State of Louisiana may necessarily be conducted in conformity with the rules and regulations promulgated by the said Department of Wildlife and Fisheries for Oyster Seed Bed Areas.

NOTE: The State of Louisiana does hereby reserve, and this lease shall be subject to, the imprescriptible right of surface use in the nature of a servitude in favor of the Department of Natural Resources, including its Offices and Commissions, for the sole purpose of implementing, constructing, servicing and maintaining approved coastal zone management and/or restoration projects. Utilization of any and all rights derived under this lease by the mineral lessee, its agents, successors or assigns, shall not interfere with nor hinder the reasonable surface use by the Department of Natural Resources, its Offices or Commissions, as herein above reserved.

Applicant: Noxxe Energy

Bidder	Cash Payment	Price / Acre	Rental	Oil	Gas	Other

SL
128 17011

P. O. B.
X=2,495,217.80
Y= 461,926.51

X=2,509,975.86
Y= 461,926.51

LAKE
BORGNE

TR 35026
1,819 ± ACS.
NOV., 2002

X=2,495,217.80
Y= 447,168.46

X=2,509,975.86
Y= 447,168.46

T13S-R14E
T13S-R15E

NAD 27 LAMBERT LA. SOUTH ZONE

St. Bernard Parish, Louisiana

