

**TRACT 35003 - Orleans and St. Bernard Parishes, Louisiana**

All of the lands now or formerly constituting the beds and bottoms of all water bodies of every nature and description, and all islands and other lands formed by accretion, where allowed by law, or by reliction, and excepting tax adjudicated lands, belonging to the State of Louisiana and not presently under mineral lease on November 13, 2002, situated in Orleans and St. Bernard Parishes, Louisiana, and more particularly described as follows: Beginning at a point having Coordinates of X = 2,465,701.70 and Y = 476,684.56; thence West 8,950.70 feet to a point having Coordinates of X = 2,456,751.00 and Y = 476,684.56; thence North 18,433.00 feet to a point having Coordinates of X = 2,456,751.00 and Y = 495,117.56; thence East 8,950.70 feet to a point having Coordinates of X = 2,465,701.70 and Y = 495,117.56; thence South 3,674.96 feet to the Northwest corner of State Lease No. 17537 having Coordinates of X = 2,465,701.70 and Y = 491,442.60; thence South 3,894.60 feet along the West line of said State Lease No. 17537 to its most Westerly Southwest corner having Coordinates of X = 2,465,701.70 and Y = 487,548.00; thence South 10,863.44 feet to the point of beginning, containing approximately **166 acres**, all as more particularly outlined on a plat on file in the Office of Mineral Resources, Department of Natural Resources, as provided by the applicant. All bearings, distances and coordinates are based on Louisiana Coordinate System of 1927, (North or South Zone), where applicable.

NOTE: The above description of the Tract nominated for lease has been provided and corrected, where required, exclusively by the nomination party. Any mineral lease selected from this Tract and awarded by the Louisiana State Mineral Board shall be without warranty of any kind, either express, implied, or statutory, including, but not limited to, the implied warranties of merchantability and fitness for a particular purpose. Should the mineral lease awarded by the Louisiana State Mineral Board be subsequently modified, cancelled or abrogated due to the existence of conflicting leases, operating agreements, private claims or other future obligations or conditions which may affect all or any portion of the leased Tract, it shall not relieve the Lessee of the obligation to pay any bonus due thereon to the Louisiana State Mineral Board, nor shall the Louisiana State Mineral Board be obligated to refund any consideration paid by the Lessor prior to such modification, cancellation, or abrogation, including, but not limited to, bonuses, rentals and royalties.

NOTE: The Office of Mineral Resources will require a minimum bonus of \$230 per acre and a minimum royalty of 23%.

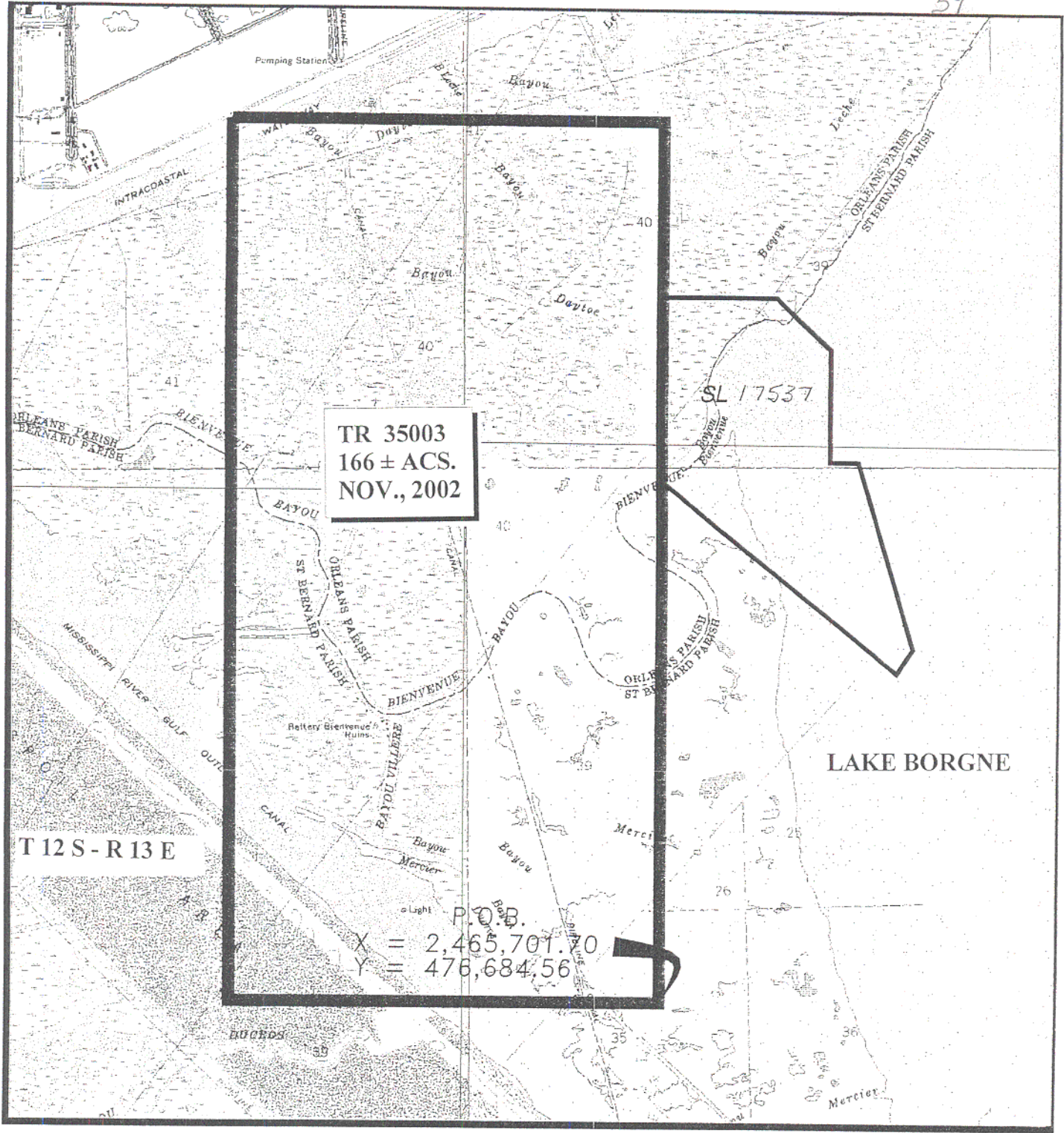
NOTE: The Department of Wildlife and Fisheries has designated certain areas in the coastal waters of the State of Louisiana as Oyster Seed Bed Areas. The exact location of those Seed Bed Areas must be obtained from the Department of Wildlife and Fisheries and any work done under a mineral lease from the State of Louisiana may necessarily be conducted in

conformity with the rules and regulations promulgated by the said Department of Wildlife and Fisheries for Oyster Seed Bed Areas.

NOTE: The State of Louisiana does hereby reserve, and this lease shall be subject to, the imprescriptible right of surface use in the nature of a servitude in favor of the Department of Natural Resources, including its Offices and Commissions, for the sole purpose of implementing, constructing, servicing and maintaining approved coastal zone management and/or restoration projects. Utilization of any and all rights derived under this lease by the mineral lessee, its agents, successors or assigns, shall not interfere with nor hinder the reasonable surface use by the Department of Natural Resources, its Offices or Commissions, as herein above reserved.

Applicant: Noxxe Energy

Bidder	Cash Payment	Price / Acre	Rental	Oil	Gas	Other



TR 35003  
 166 ± ACS.  
 NOV., 2002

SL 17537

P.O.B.  
 X = 2,465,701.70  
 Y = 476,684.56

LAKE BORGNE

T 12 S - R 13 E



0' SCALE 3000'

**TRACT 35004 - St. Bernard Parish, Louisiana**

All of the lands now or formerly constituting the beds and bottoms of all water bodies of every nature and description, and all islands and other lands formed by accretion, where allowed by law, or by reliction, and excepting tax adjudicated lands, belonging to the State of Louisiana and not presently under mineral lease on November 13, 2002, situated in St. Bernard Parish, Louisiana, and more particularly described as follows: Beginning at a point having Coordinates of X = 2,465,701.70 and Y = 461,926.51; thence West 8,950.70 feet to a point having Coordinates of X = 2,456,751.00 and Y = 461,926.51; thence North 14,758.05 feet to a point having Coordinates of X = 2,456,751.00 and Y = 476,684.56; thence East 8,950.70 feet to a point having Coordinates of X = 2,465,701.70 and Y = 476,684.56; thence South 14,758.05 feet to the point of beginning, containing approximately **6 acres**, all as more particularly outlined on a plat on file in the Office of Mineral Resources, Department of Natural Resources, as provided by the applicant. All bearings, distances and coordinates are based on Louisiana Coordinate System of 1927, (North or South Zone), where applicable.

NOTE: The above description of the Tract nominated for lease has been provided and corrected, where required, exclusively by the nomination party. Any mineral lease selected from this Tract and awarded by the Louisiana State Mineral Board shall be without warranty of any kind, either express, implied, or statutory, including, but not limited to, the implied warranties of merchantability and fitness for a particular purpose. Should the mineral lease awarded by the Louisiana State Mineral Board be subsequently modified, cancelled or abrogated due to the existence of conflicting leases, operating agreements, private claims or other future obligations or conditions which may affect all or any portion of the leased Tract, it shall not relieve the Lessee of the obligation to pay any bonus due thereon to the Louisiana State Mineral Board, nor shall the Louisiana State Mineral Board be obligated to refund any consideration paid by the Lessor prior to such modification, cancellation, or abrogation, including, but not limited to, bonuses, rentals and royalties.

NOTE: The Office of Mineral Resources will require a minimum bonus of \$230 per acre and a minimum royalty of 23%.

NOTE: The State of Louisiana does hereby reserve, and this lease shall be subject to, the imprescriptible right of surface use in the nature of a servitude in favor of the Department of Natural Resources, including its Offices and Commissions, for the sole purpose of implementing, constructing, servicing and maintaining approved coastal zone management and/or restoration projects. Utilization of any and all rights derived under this lease by the mineral lessee, its agents, successors or assigns, shall not interfere with nor hinder the reasonable surface use by the

Department of Natural Resources, its Offices or Commissions, as herein above reserved.

Applicant: Noxxe Energy

Bidder	Cash Payment	Price / Acre	Rental	Oil	Gas	Other

LAKE BORGNE

TR 35004  
6 ± ACS.  
NOV., 2002

X=2,456,751.00  
Y= 476,684.56

X=2,465,701.70  
Y= 476,684.56

X=2,456,751.00  
Y= 461,926.51

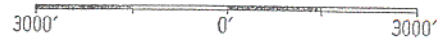
P. O. B.  
X=2,465,701.70  
Y= 461,926.51

T12S-R13E  
T13S-R13E

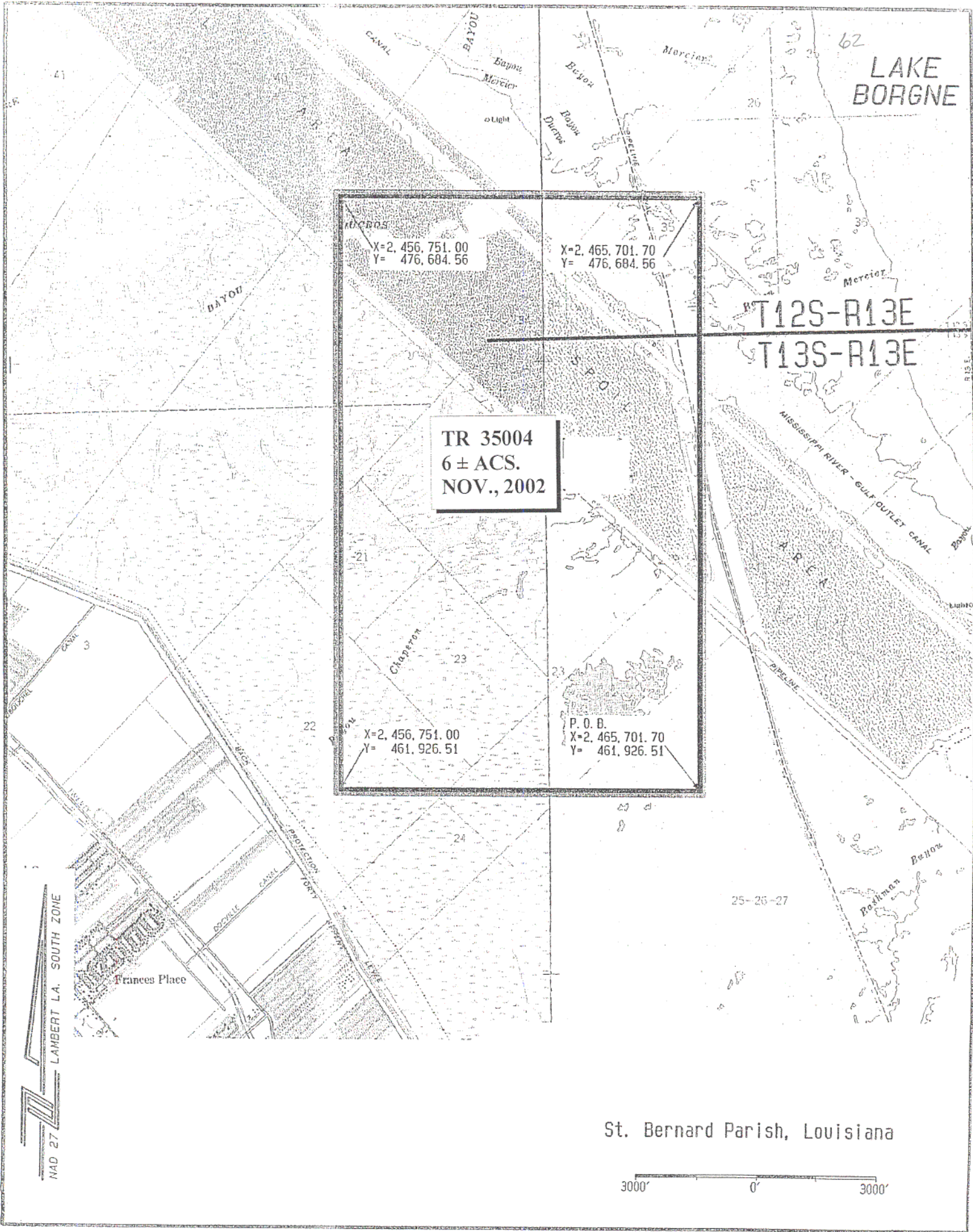
25-26-27

Frances Place

St. Bernard Parish, Louisiana



NAD 27 LAMBERT LA. SOUTH ZONE



**TRACT 35005 - Orleans Parish, Louisiana**

All of the lands now or formerly constituting the beds and bottoms of all water bodies of every nature and description, and all islands and other lands formed by accretion, where allowed by law, or by reliction, and excepting tax adjudicated lands, belonging to the State of Louisiana and not presently under mineral lease on November 13, 2002, situated in Orleans Parish, Louisiana, and more particularly described as follows: Beginning at a point having Coordinates of X = 2,465,701.70 and Y = 513,550.46; thence East 14,758.05 feet to a point having Coordinates of X = 2,480,459.75 and Y = 513,550.46; thence South 7,349.81 feet to a point having Coordinates of X = 2,480,459.75 and Y = 506,200.65; thence West 14,758.05 feet to a point having Coordinates of X = 2,465,701.70 and Y = 506,200.65; thence North 7,349.81 feet to the point of beginning, containing approximately **48 acres**, all as more particularly outlined on a plat on file in the Office of Mineral Resources, Department of Natural Resources, as provided by the applicant. All bearings, distances and coordinates are based on Louisiana Coordinate System of 1927, (North or South Zone), where applicable.

NOTE: The above description of the Tract nominated for lease has been provided and corrected, where required, exclusively by the nomination party. Any mineral lease selected from this Tract and awarded by the Louisiana State Mineral Board shall be without warranty of any kind, either express, implied, or statutory, including, but not limited to, the implied warranties of merchantability and fitness for a particular purpose. Should the mineral lease awarded by the Louisiana State Mineral Board be subsequently modified, cancelled or abrogated due to the existence of conflicting leases, operating agreements, private claims or other future obligations or conditions which may affect all or any portion of the leased Tract, it shall not relieve the Lessee of the obligation to pay any bonus due thereon to the Louisiana State Mineral Board, nor shall the Louisiana State Mineral Board be obligated to refund any consideration paid by the Lessor prior to such modification, cancellation, or abrogation, including, but not limited to, bonuses, rentals and royalties.

NOTE: The Office of Mineral Resources will require a minimum bonus of \$230 per acre and a minimum royalty of 23%.

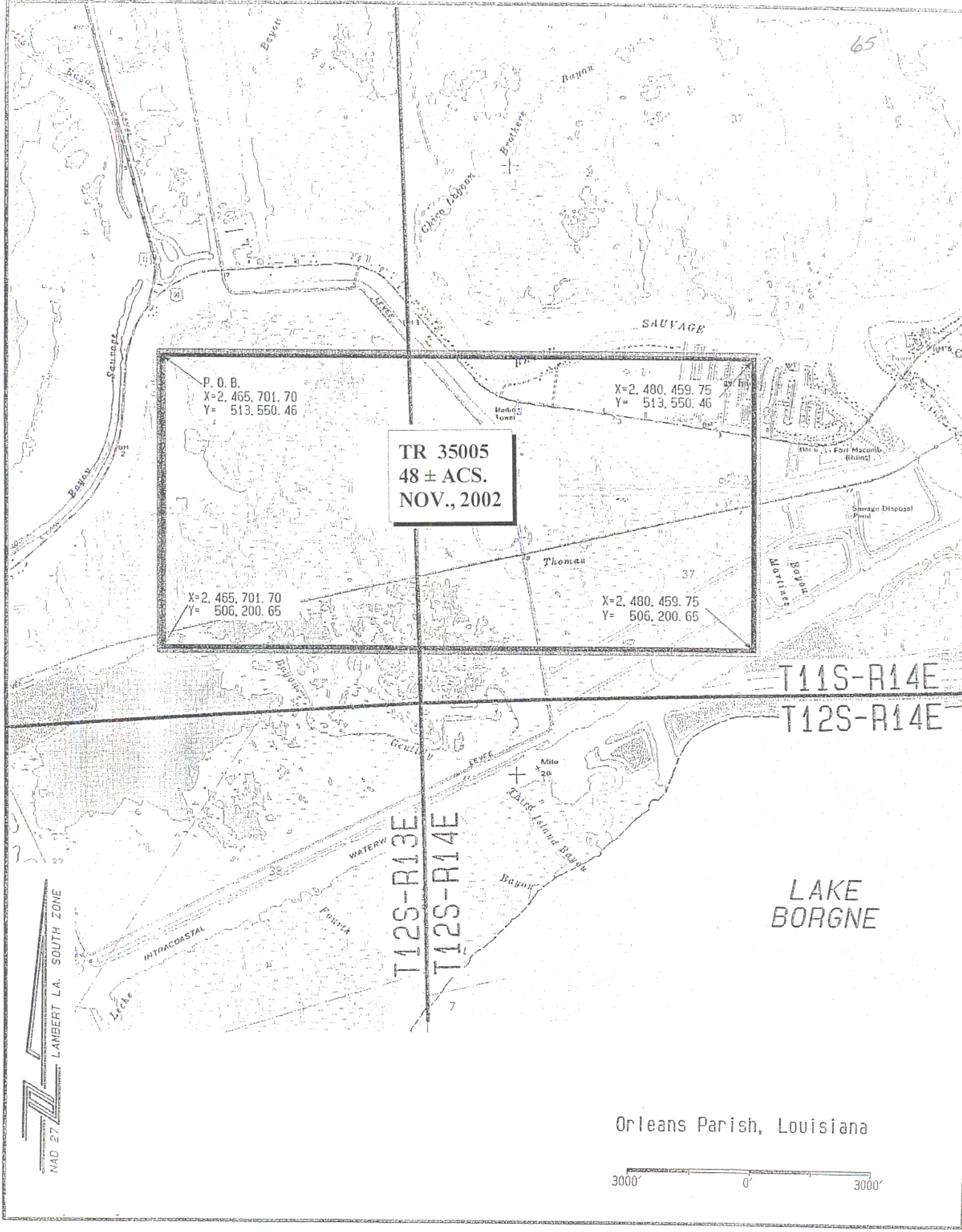
NOTE: The Department of Wildlife and Fisheries has designated certain areas in the coastal waters of the State of Louisiana as Oyster Seed Bed Areas. The exact location of those Seed Bed Areas must be obtained from the Department of Wildlife and Fisheries and any work done under a mineral lease from the State of Louisiana may necessarily be conducted in conformity with the rules and regulations promulgated by the said Department of Wildlife and Fisheries for Oyster Seed Bed Areas.

NOTE: The State of Louisiana does hereby reserve, and this lease shall be subject to, the imprescriptible right of surface use in the nature of a servitude in favor of the Department of Natural Resources, including its Offices and Commissions, for the sole purpose of implementing, constructing, servicing and maintaining approved coastal zone management and/or restoration projects. Utilization of any and all rights derived under this lease by the mineral lessee, its agents, successors or assigns, shall not interfere with nor hinder the reasonable surface use by the Department of Natural Resources, its Offices or Commissions, as herein above reserved.

Applicant: Noxxe Energy

Bidder	Cash Payment	Price / Acre	Rental	Oil	Gas	Other





TR 35005  
48 ± ACS.  
NOV., 2002

P. O. B.  
X=2,465,701.70  
Y= 513,550.46

X=2,480,459.75  
Y= 513,550.46

X=2,465,701.70  
Y= 506,200.65

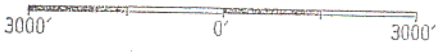
X=2,480,459.75  
Y= 506,200.65

T11S-R14E  
T12S-R14E

T12S-R13E  
T12S-R14E

LAKE  
BORGNE

Orleans Parish, Louisiana



NAD 27 LAMBERT LA. SOUTH ZONE

**TRACT 35006 - Orleans and St. Bernard Parishes, Louisiana**

All of the lands now or formerly constituting the beds and bottoms of all water bodies of every nature and description, and all islands and other lands formed by accretion, where allowed by law, or by reliction, and excepting tax adjudicated lands, belonging to the State of Louisiana and not presently under mineral lease on November 13, 2002, situated in Orleans and St. Bernard Parishes, Louisiana, and more particularly described as follows: Beginning at a point having Coordinates of X = 2,480,459.75 and Y = 506,200.65; thence South 14,758.05 feet to a point having Coordinates of X = 2,480,459.75 and Y = 491,442.60; thence West 12,382.60 feet to the Northeast corner of State Lease No. 17537 having Coordinates of X = 2,468,077.15 and Y = 491,442.60; thence West 2,375.45 feet along the North boundary of said State Lease No. 17537 to its Northwest corner having Coordinates of X = 2,465,701.70 and Y = 491,442.60; thence North 14,758.05 feet to a point having Coordinates of X = 2,465,701.70 and Y = 506,200.65; thence East 14,758.05 feet to the point of beginning, containing approximately **2,106 acres**, all as more particularly outlined on a plat on file in the Office of Mineral Resources, Department of Natural Resources, as provided by the applicant. All bearings, distances and coordinates are based on Louisiana Coordinate System of 1927, (North or South Zone), where applicable.

NOTE: The above description of the Tract nominated for lease has been provided and corrected, where required, exclusively by the nomination party. Any mineral lease selected from this Tract and awarded by the Louisiana State Mineral Board shall be without warranty of any kind, either express, implied, or statutory, including, but not limited to, the implied warranties of merchantability and fitness for a particular purpose. Should the mineral lease awarded by the Louisiana State Mineral Board be subsequently modified, cancelled or abrogated due to the existence of conflicting leases, operating agreements, private claims or other future obligations or conditions which may affect all or any portion of the leased Tract, it shall not relieve the Lessee of the obligation to pay any bonus due thereon to the Louisiana State Mineral Board, nor shall the Louisiana State Mineral Board be obligated to refund any consideration paid by the Lessor prior to such modification, cancellation, or abrogation, including, but not limited to, bonuses, rentals and royalties.

NOTE: The Office of Mineral Resources will require a minimum bonus of \$230 per acre and a minimum royalty of 23%.

NOTE: The Department of Wildlife and Fisheries has designated certain areas in the coastal waters of the State of Louisiana as Oyster Seed Bed Areas. The exact location of those Seed Bed Areas must be obtained from the Department of Wildlife and Fisheries and any work done under a mineral lease from the State of Louisiana may necessarily be conducted in

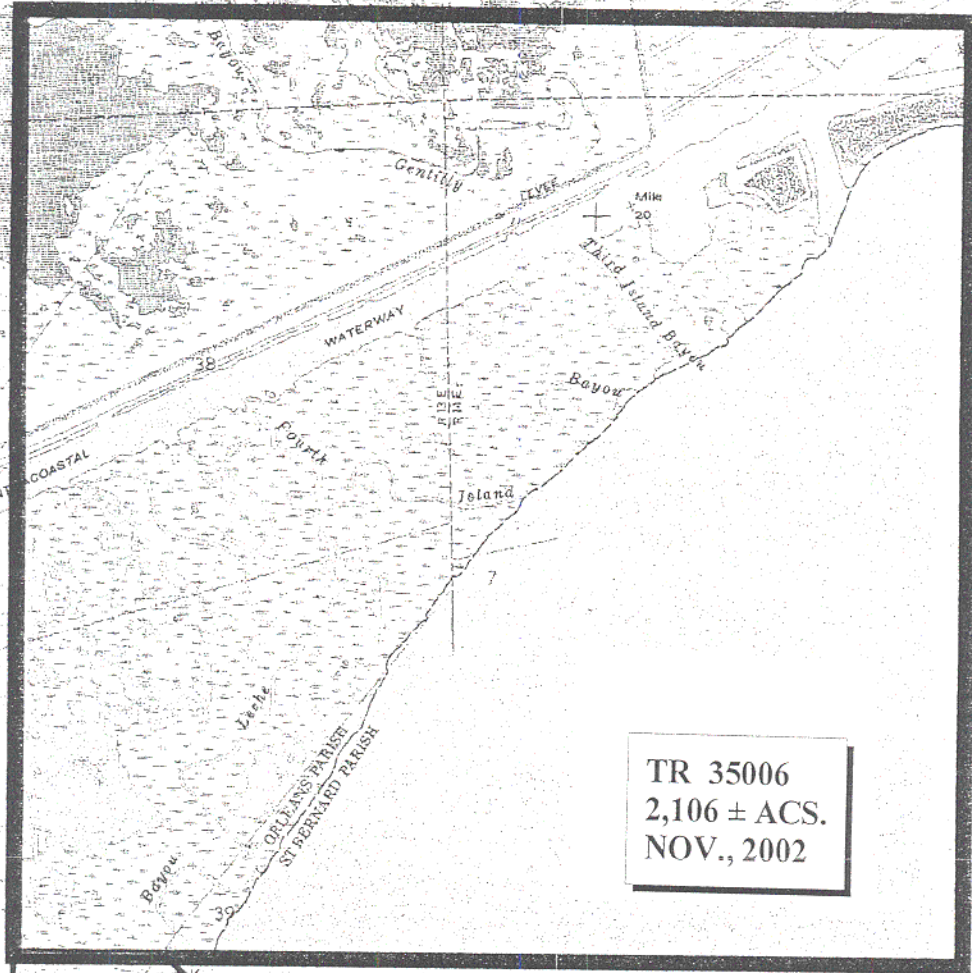
conformity with the rules and regulations promulgated by the said Department of Wildlife and Fisheries for Oyster Seed Bed Areas.

NOTE: The State of Louisiana does hereby reserve, and this lease shall be subject to, the imprescriptible right of surface use in the nature of a servitude in favor of the Department of Natural Resources, including its Offices and Commissions, for the sole purpose of implementing, constructing, servicing and maintaining approved coastal zone management and/or restoration projects. Utilization of any and all rights derived under this lease by the mineral lessee, its agents, successors or assigns, shall not interfere with nor hinder the reasonable surface use by the Department of Natural Resources, its Offices or Commissions, as herein above reserved.

Applicant: Noxxe Energy

Bidder	Cash Payment	Price / Acre	Rental	Oil	Gas	Other

P.O.B.  
X = 2,480,459.75  
Y = 506,200.65



TR 35006  
2,106 ± ACS.  
NOV., 2002

SL 17537

LAKE BORGNE



**TRACT 35007 - Orleans and St. Bernard Parishes, Louisiana**

All of the lands now or formerly constituting the beds and bottoms of all water bodies of every nature and description, and all islands and other lands formed by accretion, where allowed by law, or by reliction, and excepting tax adjudicated lands, belonging to the State of Louisiana and not presently under mineral lease on November 13, 2002, situated in Orleans and St. Bernard Parishes, Louisiana, and more particularly described as follows: Beginning at the most Northerly Northeast corner of State Lease No. 17537 having Coordinates of X = 2,468,077.15 and Y = 491,442.60; thence East 5,003.58 feet to a point having Coordinates of X = 2,473,080.73 and Y = 491,442.60; thence South 14,758.04 feet to a point having Coordinates of X = 2,473,080.73 and Y = 476,684.56; thence West 7,379.03 feet to a point having Coordinates of X = 2,465,701.70 and Y = 476,684.56; thence North 10,863.44 feet to the most Westerly Southwest corner of said State Lease No. 17537 having Coordinates of X = 2,465,701.70 and Y = 487,548.00; thence along the boundaries of said State Lease No. 17537 the following courses: South 50 degrees 55 minutes 00 seconds East 6,323.86 feet, North 33 degrees 42 minutes 01 seconds East 605.41 feet, North 16 degrees 31 minutes 03 seconds West 4,086.01 feet, West 587.84 feet, North 2,392.41 feet, North 46 degrees 21 minutes 14 seconds West 1,547.38 feet to the point of beginning, containing approximately **1,369.00 acres**, all as more particularly outlined on a plat on file in the Office of Mineral Resources, Department of Natural Resources, as provided by the applicant. All bearings, distances and coordinates are based on Louisiana Coordinate System of 1927, (North or South Zone), where applicable.

NOTE: The above description of the Tract nominated for lease has been provided and corrected, where required, exclusively by the nomination party. Any mineral lease selected from this Tract and awarded by the Louisiana State Mineral Board shall be without warranty of any kind, either express, implied, or statutory, including, but not limited to, the implied warranties of merchantability and fitness for a particular purpose. Should the mineral lease awarded by the Louisiana State Mineral Board be subsequently modified, cancelled or abrogated due to the existence of conflicting leases, operating agreements, private claims or other future obligations or conditions which may affect all or any portion of the leased Tract, it shall not relieve the Lessee of the obligation to pay any bonus due thereon to the Louisiana State Mineral Board, nor shall the Louisiana State Mineral Board be obligated to refund any consideration paid by the Lessor prior to such modification, cancellation, or abrogation, including, but not limited to, bonuses, rentals and royalties.

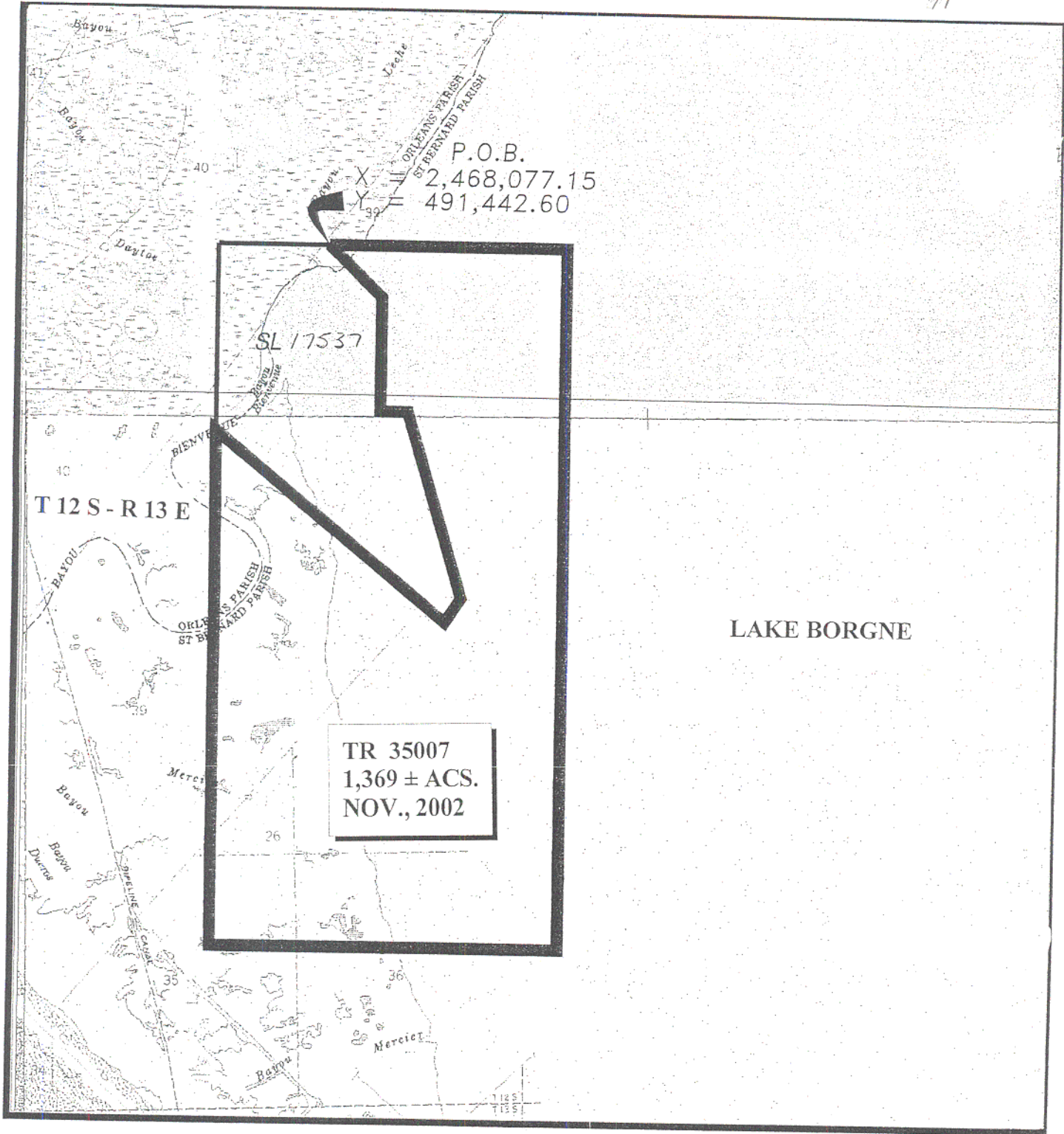
NOTE: The Office of Mineral Resources will require a minimum bonus of \$230 per acre and a minimum royalty of 23%.

NOTE: The Department of Wildlife and Fisheries has designated certain areas in the coastal waters of the State of Louisiana as Oyster Seed Bed Areas. The exact location of those Seed Bed Areas must be obtained from the Department of Wildlife and Fisheries and any work done under a mineral lease from the State of Louisiana may necessarily be conducted in conformity with the rules and regulations promulgated by the said Department of Wildlife and Fisheries for Oyster Seed Bed Areas.

NOTE: The State of Louisiana does hereby reserve, and this lease shall be subject to, the imprescriptible right of surface use in the nature of a servitude in favor of the Department of Natural Resources, including its Offices and Commissions, for the sole purpose of implementing, constructing, servicing and maintaining approved coastal zone management and/or restoration projects. Utilization of any and all rights derived under this lease by the mineral lessee, its agents, successors or assigns, shall not interfere with nor hinder the reasonable surface use by the Department of Natural Resources, its Offices or Commissions, as herein above reserved.

Applicant: Noxxe Energy

Bidder	Cash Payment	Price / Acre	Rental	Oil	Gas	Other



TR 35007  
 1,369 ± ACS.  
 NOV., 2002

P.O.B.  
 X = 2,468,077.15  
 Y = 491,442.60

SL 17537

T 12 S - R 13 E

LAKE BORGNE



0' SCALE 3000'

**TRACT 35008 - Lake Borgne Area, St. Bernard Parish, Louisiana**

All of the lands now or formerly constituting the beds and bottoms of all water bodies of every nature and description, and all islands and other lands formed by accretion, where allowed by law, or by reliction, and excepting tax adjudicated lands, belonging to the State of Louisiana and not presently under mineral lease on November 13, 2002, situated in St. Bernard Parish, Louisiana, and more particularly described as follows: Beginning at a point having Coordinates of X = 2,480,459.75 and Y = 491,442.60; thence South 14,758.04 feet to a point having Coordinates of X = 2,480,459.75 and Y = 476,684.56; thence West 7,379.02 feet to a point having Coordinates of X = 2,473,080.73 and Y = 476,684.56; thence North 14,758.04 feet to a point having Coordinates of X = 2,473,080.73 and Y = 491,442.60; thence East 7,379.02 feet to the point of beginning, containing approximately **2,500.00 acres**, all as more particularly outlined on a plat on file in the Office of Mineral Resources, Department of Natural Resources, as provided by the applicant. All bearings, distances and coordinates are based on Louisiana Coordinate System of 1927, (North or South Zone), where applicable.

NOTE: The above description of the Tract nominated for lease has been provided and corrected, where required, exclusively by the nomination party. Any mineral lease selected from this Tract and awarded by the Louisiana State Mineral Board shall be without warranty of any kind, either express, implied, or statutory, including, but not limited to, the implied warranties of merchantability and fitness for a particular purpose. Should the mineral lease awarded by the Louisiana State Mineral Board be subsequently modified, cancelled or abrogated due to the existence of conflicting leases, operating agreements, private claims or other future obligations or conditions which may affect all or any portion of the leased Tract, it shall not relieve the Lessee of the obligation to pay any bonus due thereon to the Louisiana State Mineral Board, nor shall the Louisiana State Mineral Board be obligated to refund any consideration paid by the Lessor prior to such modification, cancellation, or abrogation, including, but not limited to, bonuses, rentals and royalties.

NOTE: The Office of Mineral Resources will require a minimum bonus of \$230 per acre and a minimum royalty of 23%.

NOTE: The Department of Wildlife and Fisheries has designated certain areas in the coastal waters of the State of Louisiana as Oyster Seed Bed Areas. The exact location of those Seed Bed Areas must be obtained from the Department of Wildlife and Fisheries and any work done under a mineral lease from the State of Louisiana may necessarily be conducted in conformity with the rules and regulations promulgated by the said Department of Wildlife and Fisheries for Oyster Seed Bed Areas.



NOTE: The State of Louisiana does hereby reserve, and this lease shall be subject to, the imprescriptible right of surface use in the nature of a servitude in favor of the Department of Natural Resources, including its Offices and Commissions, for the sole purpose of implementing, constructing, servicing and maintaining approved coastal zone management and/or restoration projects. Utilization of any and all rights derived under this lease by the mineral lessee, its agents, successors or assigns, shall not interfere with nor hinder the reasonable surface use by the Department of Natural Resources, its Offices or Commissions, as herein above reserved.

Applicant: Noxxe Energy

Bidder	Cash Payment	Price / Acre	Rental	Oil	Gas	Other

P.O.B.  
X = 2,480,459.75  
Y = 491,442.60

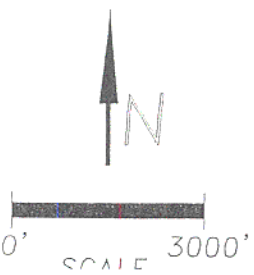
LAKE BORGNE

SL 17537

TR 35008  
2,500.00 ± ACS.  
NOV., 2002

SL 17541

B



**TRACT 35009 - Lake Borgne Area, St. Bernard Parish, Louisiana**

All of the lands now or formerly constituting the beds and bottoms of all water bodies of every nature and description, and all islands and other lands formed by accretion, where allowed by law, or by reliction, and excepting tax adjudicated lands, belonging to the State of Louisiana and not presently under mineral lease on November 13, 2002, situated in St. Bernard Parish, Louisiana, and more particularly described as follows: Beginning at a point having Coordinates of X = 2,480,459.75 and Y = 476,684.56; thence South 7,399.97 feet to a point being the Northeast corner of State Lease No. 17538 and the Northwest corner of State Lease No. 17542 having Coordinates of X = 2,480,459.75 and Y = 469,284.59; thence along the boundaries of State Lease No. 17538 the following courses: North 85 degrees 13 minutes 23 seconds West 2,986.22 feet, South 69 degrees 40 minutes 48 seconds West 2,413.29 feet, South 30 degrees 45 minutes 16 seconds West 1,493.66 feet, South 20 degrees 50 minutes 50 seconds West 1,381.10 feet, South 29 degrees 47 minutes 54 seconds East 1,401.75 feet, South 05 degrees 48 minutes 21 seconds West 1,713.19 feet, South 02 degrees 10 minutes 04 seconds West 1,274.54 feet to a point being the Southwest corner of State Lease No. 17538 having Coordinates of X = 2,474,440.59 and Y = 461,926.51; thence West 8,738.89 feet to a point having Coordinates of X = 2,465,701.70 and Y = 461,926.51; thence North 14,758.05 feet to a point having Coordinates of X = 2,465,701.70 and Y = 476,684.56; thence East 14,758.05 feet to the point of beginning, containing approximately **1,750 acres**, all as more particularly outlined on a plat on file in the Office of Mineral Resources, Department of Natural Resources, as provided by the applicant. All bearings, distances and coordinates are based on Louisiana Coordinate System of 1927, (North or South Zone), where applicable.

NOTE: The above description of the Tract nominated for lease has been provided and corrected, where required, exclusively by the nomination party. Any mineral lease selected from this Tract and awarded by the Louisiana State Mineral Board shall be without warranty of any kind, either express, implied, or statutory, including, but not limited to, the implied warranties of merchantability and fitness for a particular purpose. Should the mineral lease awarded by the Louisiana State Mineral Board be subsequently modified, cancelled or abrogated due to the existence of conflicting leases, operating agreements, private claims or other future obligations or conditions which may affect all or any portion of the leased Tract, it shall not relieve the Lessee of the obligation to pay any bonus due thereon to the Louisiana State Mineral Board, nor shall the Louisiana State Mineral Board be obligated to refund any consideration paid by the Lessor prior to such modification, cancellation, or abrogation, including, but not limited to, bonuses, rentals and royalties.

NOTE: The Office of Mineral Resources will require a minimum bonus of \$230 per acre and a minimum royalty of 23%.

NOTE: The Department of Wildlife and Fisheries has designated certain areas in the coastal waters of the State of Louisiana as Oyster Seed Bed Areas. The exact location of those Seed Bed Areas must be obtained from the Department of Wildlife and Fisheries and any work done under a mineral lease from the State of Louisiana may necessarily be conducted in conformity with the rules and regulations promulgated by the said Department of Wildlife and Fisheries for Oyster Seed Bed Areas.

NOTE: The State of Louisiana does hereby reserve, and this lease shall be subject to, the imprescriptible right of surface use in the nature of a servitude in favor of the Department of Natural Resources, including its Offices and Commissions, for the sole purpose of implementing, constructing, servicing and maintaining approved coastal zone management and/or restoration projects. Utilization of any and all rights derived under this lease by the mineral lessee, its agents, successors or assigns, shall not interfere with nor hinder the reasonable surface use by the Department of Natural Resources, its Offices or Commissions, as herein above reserved.

Applicant: Noxxe Energy

Bidder	Cash Payment	Price / Acre	Rental	Oil	Gas	Other

P.O.B.  
X = 2,480,459.75  
Y = 476,684.56

L A K E

LAKE BORGNE

TR 35009  
1,750 ± ACS.  
NOV., 2002

Light

CHANNEL

MARTELLO CASTLE

SL 17538

SL 17542

Silver Beach Bayou

Brashers Bayou

25-26-27



0' 3000'

**TRACT 35010 - St. Bernard Parish, Louisiana**

All of the lands now or formerly constituting the beds and bottoms of all water bodies of every nature and description, and all islands and other lands formed by accretion, where allowed by law, or by reliction, and excepting tax adjudicated lands, belonging to the State of Louisiana and not presently under mineral lease on November 13, 2002, situated in St. Bernard Parish, Louisiana, and more particularly described as follows: Beginning at a point having Coordinates of X = 2,465,701.70 and Y = 461,926.51; thence East 8,738.89 feet to the Southwest corner of State Lease No. 17538 having Coordinates of X = 2,474,440.59 and Y = 461,926.51; thence East 5,784.31 feet along the South line of State Lease No. 17538 to its Southeast corner having Coordinates of X = 2,480,224.90 and Y = 461,926.51; thence East 234.85 feet to a point having Coordinates of X = 2,480,459.75 and Y = 461,926.51; thence South 14,758.05 feet to a point having Coordinates of X = 2,480,459.75 and Y = 447,168.46; thence West 14,758.05 feet to a point having Coordinates of X = 2,465,701.70 and Y = 447,168.46; thence North 14,758.05 feet to the point of beginning, containing approximately **48 acres**, all as more particularly outlined on a plat on file in the Office of Mineral Resources, Department of Natural Resources, as provided by the applicant. All bearings, distances and coordinates are based on Louisiana Coordinate System of 1927, (North or South Zone), where applicable.

NOTE: The above description of the Tract nominated for lease has been provided and corrected, where required, exclusively by the nomination party. Any mineral lease selected from this Tract and awarded by the Louisiana State Mineral Board shall be without warranty of any kind, either express, implied, or statutory, including, but not limited to, the implied warranties of merchantability and fitness for a particular purpose. Should the mineral lease awarded by the Louisiana State Mineral Board be subsequently modified, cancelled or abrogated due to the existence of conflicting leases, operating agreements, private claims or other future obligations or conditions which may affect all or any portion of the leased Tract, it shall not relieve the Lessee of the obligation to pay any bonus due thereon to the Louisiana State Mineral Board, nor shall the Louisiana State Mineral Board be obligated to refund any consideration paid by the Lessor prior to such modification, cancellation, or abrogation, including, but not limited to, bonuses, rentals and royalties.

NOTE: The Office of Mineral Resources will require a minimum bonus of \$230 per acre and a minimum royalty of 23%.

NOTE: The above Tract is located upon a restricted scenic river and all operations in this area must be conducted in strict conformity with the regulations of the Corps of Engineers, U.S. Army.

NOTE: The State of Louisiana does hereby reserve, and this lease shall be subject to, the imprescriptible right of surface use in the nature of a servitude in favor of the Department of Natural Resources, including its Offices and Commissions, for the sole purpose of implementing, constructing, servicing and maintaining approved coastal zone management and/or restoration projects. Utilization of any and all rights derived under this lease by the mineral lessee, its agents, successors or assigns, shall not interfere with nor hinder the reasonable surface use by the Department of Natural Resources, its Offices or Commissions, as herein above reserved.

Applicant: Noxxe Energy

Bidder	Cash Payment	Price / Acre	Rental	Oil	Gas	Other

PORTELLO CASTLE

LAKE BORGNE

SL 17538

SL

Sho. Bea

P.O.B.

X = 2,465,701.70  
Y = 461,926.51

25-26-21

TR 35010  
48 ± ACS.  
NOV., 2002

Bashman Bayou

RAYOU

Terre-Beau Bayou

Bayou

Pirouque

Bayou

T 13 S - R 13 E

T 13 S - R 14 E

67

10



0' SCALE 3000'



**TRACT 35011 - Orleans Parish, Louisiana**

All of the lands now or formerly constituting the beds and bottoms of all water bodies of every nature and description, and all islands and other lands formed by accretion, where allowed by law, or by reliction, and excepting tax adjudicated lands, belonging to the State of Louisiana and not presently under mineral lease on November 13, 2002, situated in Orleans Parish, Louisiana, and more particularly described as follows: Beginning at a point having Coordinates of X = 2,495,217.80 and Y = 513,550.46; thence South 7,349.81 feet to a point having Coordinates of X = 2,495,217.80 and Y = 506,200.65; thence West 14,758.05 feet to a point having Coordinates of X = 2,480,459.75 and Y = 506,200.65; thence North 7,349.81 feet to a point having Coordinates of X = 2,480,459.75 and Y = 513,550.46; thence East 14,758.05 feet to the point of beginning, containing approximately **285 acres**, all as more particularly outlined on a plat on file in the Office of Mineral Resources, Department of Natural Resources, as provided by the applicant. All bearings, distances and coordinates are based on Louisiana Coordinate System of 1927, (North or South Zone), where applicable.

NOTE: The above description of the Tract nominated for lease has been provided and corrected, where required, exclusively by the nomination party. Any mineral lease selected from this Tract and awarded by the Louisiana State Mineral Board shall be without warranty of any kind, either express, implied, or statutory, including, but not limited to, the implied warranties of merchantability and fitness for a particular purpose. Should the mineral lease awarded by the Louisiana State Mineral Board be subsequently modified, cancelled or abrogated due to the existence of conflicting leases, operating agreements, private claims or other future obligations or conditions which may affect all or any portion of the leased Tract, it shall not relieve the Lessee of the obligation to pay any bonus due thereon to the Louisiana State Mineral Board, nor shall the Louisiana State Mineral Board be obligated to refund any consideration paid by the Lessor prior to such modification, cancellation, or abrogation, including, but not limited to, bonuses, rentals and royalties.

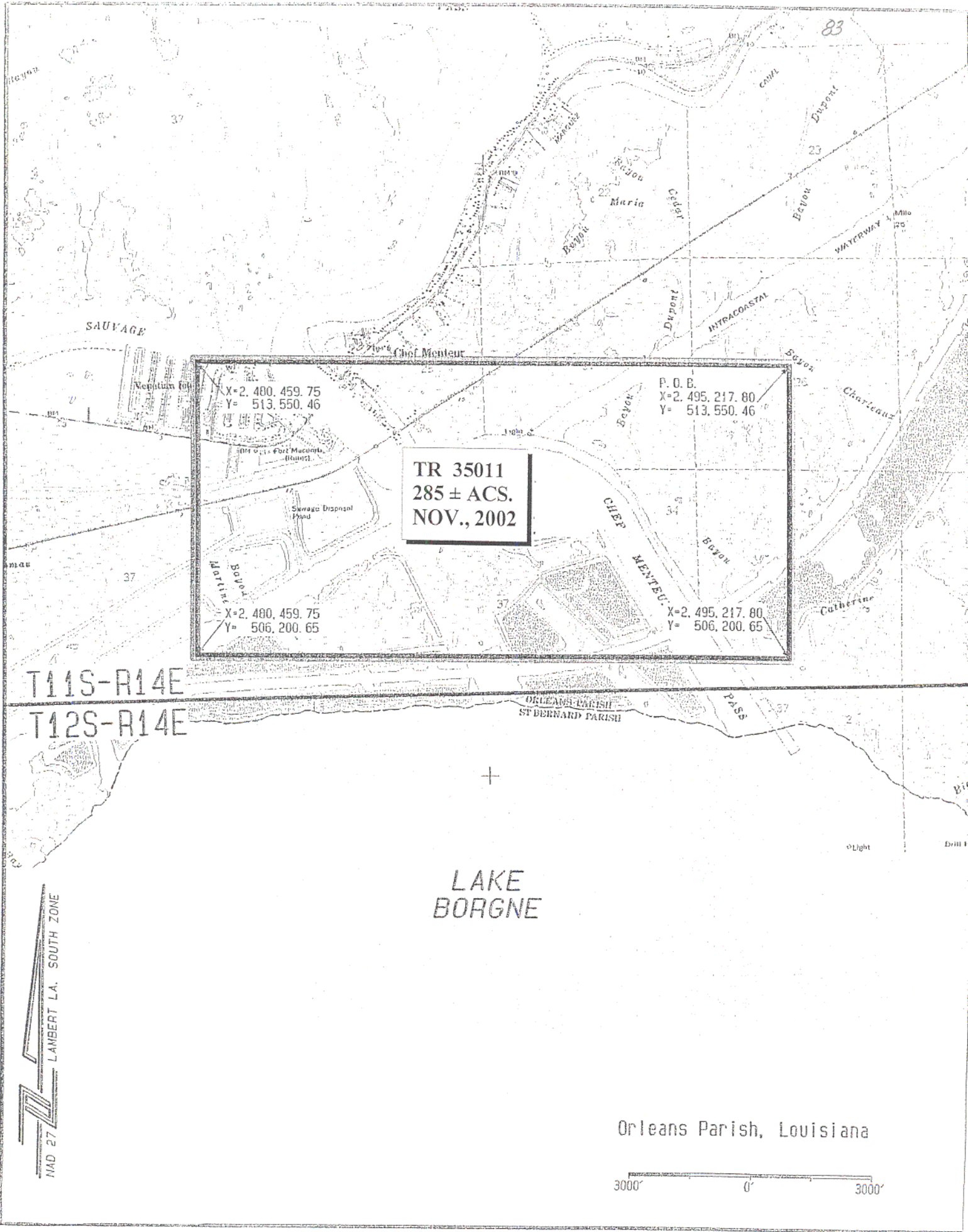
NOTE: The Office of Mineral Resources will require a minimum bonus of \$230 per acre and a minimum royalty of 23%.

NOTE: The Department of Wildlife and Fisheries has designated certain areas in the coastal waters of the State of Louisiana as Oyster Seed Bed Areas. The exact location of those Seed Bed Areas must be obtained from the Department of Wildlife and Fisheries and any work done under a mineral lease from the State of Louisiana may necessarily be conducted in conformity with the rules and regulations promulgated by the said Department of Wildlife and Fisheries for Oyster Seed Bed Areas.

NOTE: The State of Louisiana does hereby reserve, and this lease shall be subject to, the imprescriptible right of surface use in the nature of a servitude in favor of the Department of Natural Resources, including its Offices and Commissions, for the sole purpose of implementing, constructing, servicing and maintaining approved coastal zone management and/or restoration projects. Utilization of any and all rights derived under this lease by the mineral lessee, its agents, successors or assigns, shall not interfere with nor hinder the reasonable surface use by the Department of Natural Resources, its Offices or Commissions, as herein above reserved.

Applicant: Noxxe Energy

Bidder	Cash Payment	Price / Acre	Rental	Oil	Gas	Other



**TR 35011**  
**285 ± ACS.**  
**NOV., 2002**

<p>X=2,480,459.75 Y=513,550.46</p>	<p>P. O. B. X=2,495,217.80 Y=513,550.46</p>
<p>X=2,480,459.75 Y=506,200.65</p>	<p>X=2,495,217.80 Y=506,200.65</p>

T11S-R14E  
T12S-R14E

ORLEANS PARISH  
ST BERNARD PARISH

+  
**LAKE**  
**BORGNE**

Orleans Parish, Louisiana



NAD 87 LAMBERT LA. SOUTH ZONE

**TRACT 35012 - Orleans and St. Bernard Parishes, Louisiana**

All of the lands now or formerly constituting the beds and bottoms of all water bodies of every nature and description, and all islands and other lands formed by accretion, where allowed by law, or by reliction, and excepting tax adjudicated lands, belonging to the State of Louisiana and not presently under mineral lease on November 13, 2002, situated in Orleans and St. Bernard Parishes, Louisiana, and more particularly described as follows: Beginning at a point having Coordinates of X = 2,495,217.80 and Y = 498,821.63; thence West 14,758.05 feet to a point having Coordinates of X = 2,480,459.75 and Y = 498,821.63; thence North 7,379.02 feet to a point having Coordinates of X = 2,480,459.75 and Y = 506,200.65; thence East 14,758.05 feet to a point having Coordinates of X = 2,495,217.80 and Y = 506,200.65; thence South 7,379.02 feet to the point of beginning, containing approximately **2,118 acres**, all as more particularly outlined on a plat on file in the Office of Mineral Resources, Department of Natural Resources, as provided by the applicant. All bearings, distances and coordinates are based on Louisiana Coordinate System of 1927, (North or South Zone), where applicable.

NOTE: The above description of the Tract nominated for lease has been provided and corrected, where required, exclusively by the nomination party. Any mineral lease selected from this Tract and awarded by the Louisiana State Mineral Board shall be without warranty of any kind, either express, implied, or statutory, including, but not limited to, the implied warranties of merchantability and fitness for a particular purpose. Should the mineral lease awarded by the Louisiana State Mineral Board be subsequently modified, cancelled or abrogated due to the existence of conflicting leases, operating agreements, private claims or other future obligations or conditions which may affect all or any portion of the leased Tract, it shall not relieve the Lessee of the obligation to pay any bonus due thereon to the Louisiana State Mineral Board, nor shall the Louisiana State Mineral Board be obligated to refund any consideration paid by the Lessor prior to such modification, cancellation, or abrogation, including, but not limited to, bonuses, rentals and royalties.

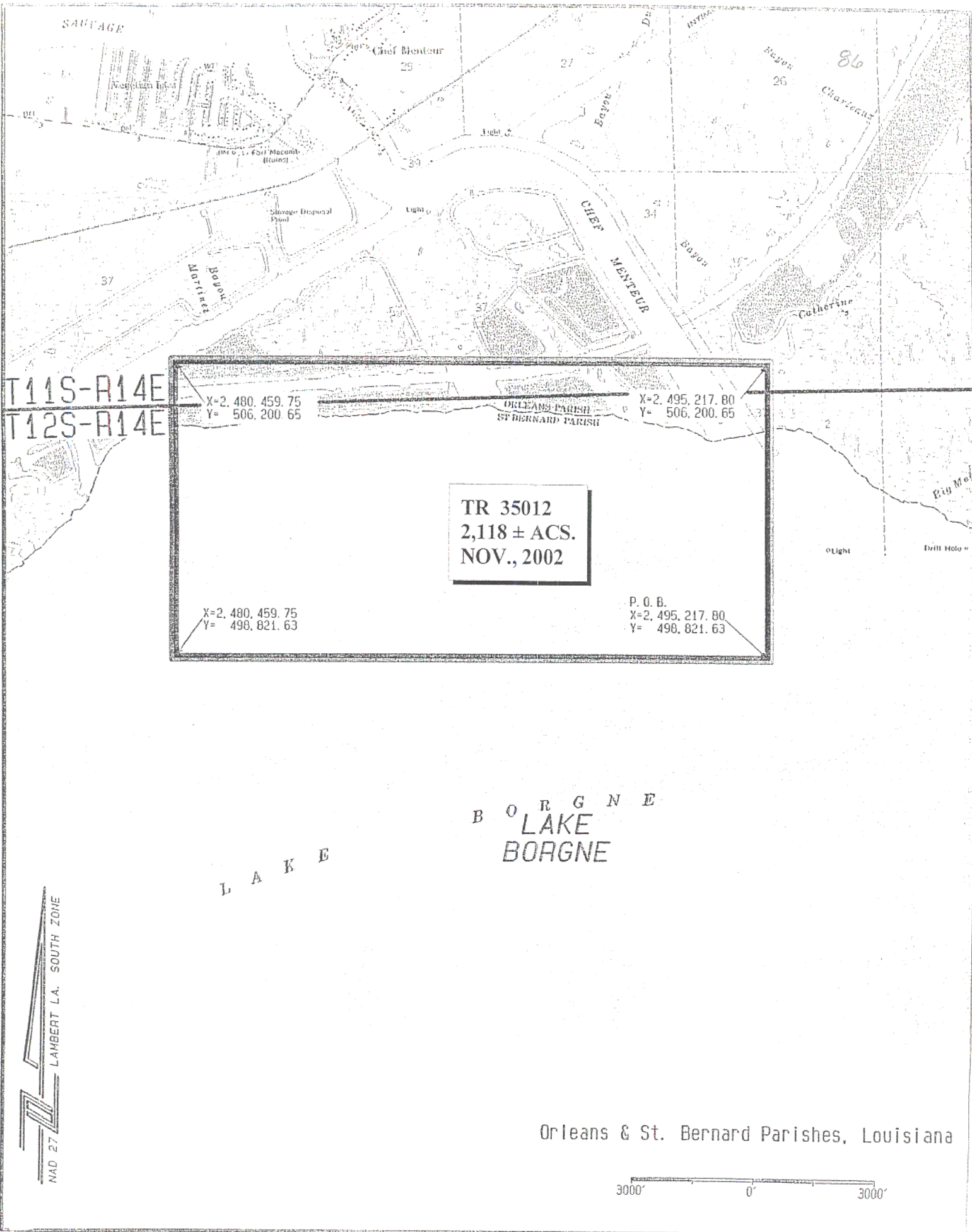
NOTE: The Office of Mineral Resources will require a minimum bonus of \$230 per acre and a minimum royalty of 23%.

NOTE: The Department of Wildlife and Fisheries has designated certain areas in the coastal waters of the State of Louisiana as Oyster Seed Bed Areas. The exact location of those Seed Bed Areas must be obtained from the Department of Wildlife and Fisheries and any work done under a mineral lease from the State of Louisiana may necessarily be conducted in conformity with the rules and regulations promulgated by the said Department of Wildlife and Fisheries for Oyster Seed Bed Areas.

NOTE: The State of Louisiana does hereby reserve, and this lease shall be subject to, the imprescriptible right of surface use in the nature of a servitude in favor of the Department of Natural Resources, including its Offices and Commissions, for the sole purpose of implementing, constructing, servicing and maintaining approved coastal zone management and/or restoration projects. Utilization of any and all rights derived under this lease by the mineral lessee, its agents, successors or assigns, shall not interfere with nor hinder the reasonable surface use by the Department of Natural Resources, its Offices or Commissions, as herein above reserved.

Applicant: Noxxe Energy

Bidder	Cash Payment	Price / Acre	Rental	Oil	Gas	Other



T11S-R14E  
T12S-R14E

X=2,480,459.75  
Y=506,200.65

X=2,495,217.80  
Y=506,200.65

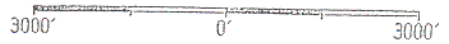
TR 35012  
2,118 ± ACS.  
NOV., 2002

X=2,480,459.75  
Y=498,821.63

P. O. B.  
X=2,495,217.80  
Y=498,821.63

B O R G N E  
LAKE  
BORGNE

Orleans & St. Bernard Parishes, Louisiana



NAD 27  
LAMBERT LA. SOUTH ZONE

**TRACT 35013 - Lake Borgne Area, St. Bernard Parish, Louisiana**

All of the lands now or formerly constituting the beds and bottoms of all water bodies of every nature and description, and all islands and other lands formed by accretion, where allowed by law, or by reliction, and excepting tax adjudicated lands, belonging to the State of Louisiana and not presently under mineral lease on November 13, 2002, situated in St. Bernard Parish, Louisiana, and more particularly described as follows: Beginning at a point having Coordinates of X = 2,495,217.80 and Y = 498,821.63; thence South 7,379.03 feet to a point having Coordinates of X = 2,495,217.80 and Y = 491,442.60; thence West 14,758.05 feet to a point having Coordinates of X = 2,480,459.75 and Y = 491,442.60; thence North 7,379.03 feet to a point having Coordinates of X = 2,480,459.75 and Y = 498,821.63; thence East 14,758.05 feet to the point of beginning, containing approximately **2,500.00 acres**, all as more particularly outlined on a plat on file in the Office of Mineral Resources, Department of Natural Resources, as provided by the applicant. All bearings, distances and coordinates are based on Louisiana Coordinate System of 1927, (North or South Zone), where applicable.

NOTE: The above description of the Tract nominated for lease has been provided and corrected, where required, exclusively by the nomination party. Any mineral lease selected from this Tract and awarded by the Louisiana State Mineral Board shall be without warranty of any kind, either express, implied, or statutory, including, but not limited to, the implied warranties of merchantability and fitness for a particular purpose. Should the mineral lease awarded by the Louisiana State Mineral Board be subsequently modified, cancelled or abrogated due to the existence of conflicting leases, operating agreements, private claims or other future obligations or conditions which may affect all or any portion of the leased Tract, it shall not relieve the Lessee of the obligation to pay any bonus due thereon to the Louisiana State Mineral Board, nor shall the Louisiana State Mineral Board be obligated to refund any consideration paid by the Lessor prior to such modification, cancellation, or abrogation, including, but not limited to, bonuses, rentals and royalties.

NOTE: The Office of Mineral Resources will require a minimum bonus of \$230 per acre and a minimum royalty of 23%.

NOTE: The Department of Wildlife and Fisheries has designated certain areas in the coastal waters of the State of Louisiana as Oyster Seed Bed Areas. The exact location of those Seed Bed Areas must be obtained from the Department of Wildlife and Fisheries and any work done under a mineral lease from the State of Louisiana may necessarily be conducted in conformity with the rules and regulations promulgated by the said Department of Wildlife and Fisheries for Oyster Seed Bed Areas.

NOTE: The State of Louisiana does hereby reserve, and this lease shall be subject to, the imprescriptible right of surface use in the nature of a servitude in favor of the Department of Natural Resources, including its Offices and Commissions, for the sole purpose of implementing, constructing, servicing and maintaining approved coastal zone management and/or restoration projects. Utilization of any and all rights derived under this lease by the mineral lessee, its agents, successors or assigns, shall not interfere with nor hinder the reasonable surface use by the Department of Natural Resources, its Offices or Commissions, as herein above reserved.

Applicant: Noxxe Energy

Bidder	Cash Payment	Price / Acre	Rental	Oil	Gas	Other



ORIGANS PARISH  
ST BERNARD PARISH

LAKE BORGNE

P.O.B.  
X = 2,495,217.80  
Y = 498,821.63

TR 35013  
2,500.00 ± ACS.  
NOV., 2002

SL 17539



0' SCALE 3000'