

Resources, Department of Natural Resources, as provided by the applicant. All bearings, distances and coordinates are based on Louisiana Coordinate System of 1927 (South Zone).

NOTE: The above description of the tract nominated for lease has been provided exclusively by the party nominating the tract for lease. The Louisiana State Mineral Board makes no representation as to the accuracy of the description of the nominated tract or its suitability for lease. The Louisiana State Mineral Board has made no inspection of the nominated tract for the existence of conflicting leases, operating agreements, private claims or other existing or future obligations or conditions which may affect all or any portion of the nominated tract or its suitability for lease.

Maps depicting the nominated tract, containing the bearings, distances and coordinates of the nominated tract based on the Louisiana Coordinate System of 1927, North or South Zone, as applicable, are available for public inspection and review at the offices of the Louisiana State Mineral Board from 10:00 a.m. to 3:00 p.m. Monday - Friday.

In the event of conflict between the description of the nominated tract set forth above and the description of the nominated property as contained on the maps maintained at the offices of the Louisiana State Mineral Board, the Louisiana State Mineral Board maps shall prevail and shall provide the final property description of the lease to be awarded of the nominated tract.

Any mineral lease of the nominated tract by the Louisiana State Mineral Board shall be without warranty of any kind, either express, implied, or statutory, including, but not limited to, the implied warranties or merchantability and fitness for a particular purpose. Should the mineral lease of the nominated tract awarded by the Louisiana State Mineral Board be subsequently modified, cancelled or abrogated due to the existence of conflicting leases, operating agreements, private claims or other existing or future obligations or conditions which may affect all or any portion of the leased tract, it shall not relieve the Lessee of the obligation to pay any bonus due thereon to the Louisiana State Mineral Board, nor shall the Louisiana State Mineral Board be obligated to refund any consideration paid by the Lessee prior to such modification, cancellation, or abrogation, including, but not limited to, bonuses, rents and royalties.

NOTE: The above tract is located in or near an oyster restricted area and all operations in such area must be conducted in strict conformity with the stipulations and/or regulations of the Louisiana Department of Wildlife and Fisheries.

NOTE: The above described tract is in the vicinity of existing shell reefs where drilling and dredging operations must be conducted in strict conformity with the regulations adopted by the Louisiana Department of Wildlife and Fisheries and/or the U.S. Corps of Engineers, U.S. Army.

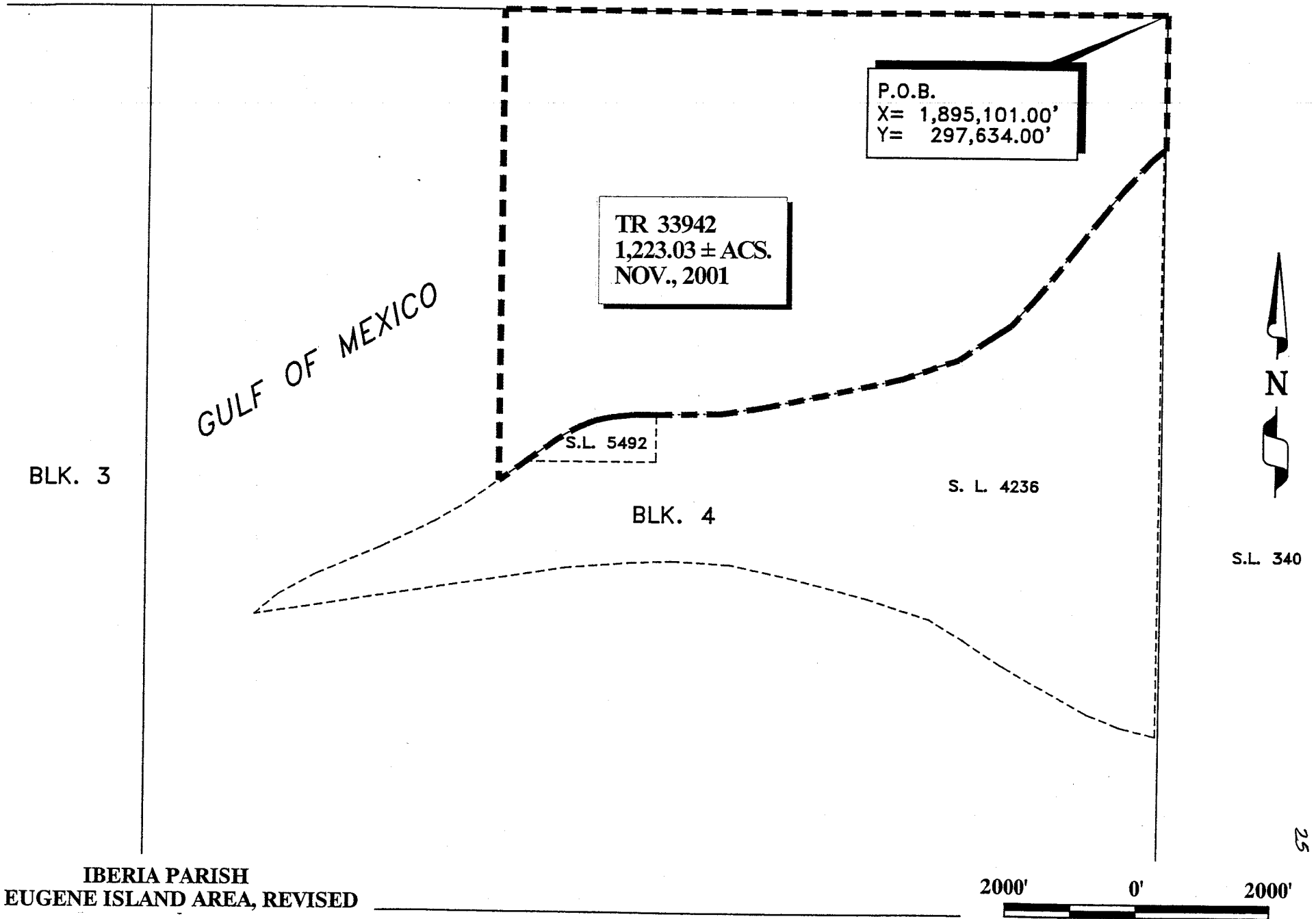
NOTE: The State of Louisiana does hereby reserve, and this lease shall be

subject to, the imprescriptible right of surface use in the nature of a servitude in favor of the Department of Natural Resources, including its Offices and Commissions, for the sole purpose of implementing, constructing, servicing and maintaining approved coastal zone management and/or restoration projects. Utilization of any and all rights derived under this lease by the mineral lessee, its agents, successors or assigns, shall not interfere with nor hinder the reasonable surface use by the Department of Natural Resources, its Offices or Commissions, as hereinabove reserved.

Applicant: Mineral Services, Inc.

Bidder	Cash Payment	Price / Acre	Rental	Oil	Gas	Other

EAST COTE BLANCHE BAY



TRACT 33943 - PORTION OF BLOCK 4, EUGENE ISLAND AREA, REVISED, Iberia Parish, Louisiana

That portion of Block 4, Eugene Island Area, Revised, Iberia Parish, Louisiana, belonging to the State of Louisiana and not under mineral lease on November 14, 2001, described as follows: Beginning at the Southwest corner of Block 4, Eugene Island Area, Revised, having Coordinates of X = 1,879,822.72 and Y = 283,905.06; thence North 6,563.02 feet along the West boundary of said Block 4, Eugene Island Area, Revised, to a point having Coordinates of X = 1,879,822.72 and Y = 290,468.08; thence East 5,278.28 feet to a point on the Northern boundary of State Lease No. 4236, as amended, having Coordinates of X = 1,885,101.00 and Y = 290,468.08; thence along the Northern and Southern boundaries of said State Lease No. 4236, as amended, the following courses: South 52 degrees 55 minutes 41 seconds West 527.65 feet to a point having Coordinates of X = 1,884,680.00 and Y = 290,150.01; South 59 degrees 02 minutes 10 seconds West 583.10 feet to a point having Coordinates of X = 1,884,180.00 and Y = 289,850.00; South 63 degrees 42 minutes 42 seconds West 925.74 feet to a point having Coordinates of X = 1,883,350.00 and Y = 289,440.00; South 66 degrees 48 minutes 05 seconds West 1,066.21 feet to a point having Coordinates of X = 1,882,370.00 and Y = 289,020.00; South 60 degrees 35 minutes 34 seconds West 631.35 feet to a point having Coordinates of X = 1,881,820.00 and Y = 288,710.00; South 50 degrees 02 minutes 33 seconds West 482.70 feet to a point having Coordinates of X = 1,881,450.00 and Y = 288,400.00; North 80 degrees 56 minutes 01 seconds East 4,759.46 feet to a point having Coordinates of X = 1,886,149.98 and Y = 289,150.01; North 85 degrees 29 minutes 10 seconds East 952.96 feet to a point having Coordinates of X = 1,887,099.98 and Y = 289,225.01; North 87 degrees 36 minutes 51 seconds East 600.52 feet to a point having Coordinates of X = 1,887,699.98 and Y = 289,250.01; South 86 degrees 44 minutes 53 seconds East 881.42 feet to a point having Coordinates of X = 1,888,579.98 and Y = 289,200.01; South 77 degrees 44 minutes 07 seconds East 760.09 feet to a point having Coordinates of X = 1,889,322.72 and Y = 289,038.55; thence South 5,133.49 feet to a point on the South boundary of said Block 4, Eugene Island Area, Revised, having Coordinates of X = 1,889,322.72 and Y = 283,905.06; thence West 9,500.00 feet along the said South boundary of Block 4, Eugene Island Area, Revised, to the point of beginning, containing approximately 1,242.60 acres, as shown outlined on a plat on file in the Office of Mineral Resources, Department of Natural Resources, as provided by the applicant. All bearings, distances and coordinates are based on Louisiana Coordinate System of 1927 (South Zone).

NOTE: The above description of the tract nominated for lease has been provided exclusively by the party nominating the tract for lease. The Louisiana State Mineral Board makes no representation as to the accuracy of the description of the nominated tract or its suitability for lease. The Louisiana State Mineral Board has made no inspection of the nominated tract for the existence of conflicting leases, operating agreements, private claims or other existing or future obligations or conditions which may affect all or any portion of the nominated tract or its suitability for lease.

Maps depicting the nominated tract, containing the bearings, distances and coordinates of the nominated tract based on the Louisiana Coordinate System of 1927, North or South Zone, as applicable, are available for public inspection and review at the

offices of the Louisiana State Mineral Board from 10:00 a.m. to 3:00 p.m. Monday - Friday.

In the event of conflict between the description of the nominated tract set forth above and the description of the nominated property as contained on the maps maintained at the offices of the Louisiana State Mineral Board, the Louisiana State Mineral Board maps shall prevail and shall provide the final property description of the lease to be awarded of the nominated tract.

Any mineral lease of the nominated tract by the Louisiana State Mineral Board shall be without warranty of any kind, either express, implied, or statutory, including, but not limited to, the implied warranties or merchantability and fitness for a particular purpose. Should the mineral lease of the nominated tract awarded by the Louisiana State Mineral Board be subsequently modified, cancelled or abrogated due to the existence of conflicting leases, operating agreements, private claims or other existing or future obligations or conditions which may affect all or any portion of the leased tract, it shall not relieve the Lessee of the obligation to pay any bonus due thereon to the Louisiana State Mineral Board, nor shall the Louisiana State Mineral Board be obligated to refund any consideration paid by the Lessee prior to such modification, cancellation, or abrogation, including, but not limited to, bonuses, rents and royalties.

NOTE: The above tract is located in or near an oyster restricted area and all operations in such area must be conducted in strict conformity with the stipulations and/or regulations of the Louisiana Department of Wildlife and Fisheries.

NOTE: The above described tract is in the vicinity of existing shell reefs where drilling and dredging operations must be conducted in strict conformity with the regulations adopted by the Louisiana Department of Wildlife and Fisheries and/or the U.S. Corps of Engineers, U.S. Army.

NOTE: The State of Louisiana does hereby reserve, and this lease shall be subject to, the imprescriptible right of surface use in the nature of a servitude in favor of the Department of Natural Resources, including its Offices and Commissions, for the sole purpose of implementing, constructing, servicing and maintaining approved coastal zone management and/or restoration projects. Utilization of any and all rights derived under this lease by the mineral lessee, its agents, successors or assigns, shall not interfere with nor hinder the reasonable surface use by the Department of Natural Resources, its Offices or Commissions, as hereinabove reserved.

Applicant: Mineral Services, Inc.

Bidder	Cash Payment	Price / Acre	Rental	Oil	Gas	Other

GULF OF MEXICO

BLK. 3

BLK. 4

S. L. 4236

TR 33943
1,242.60 ± ACS.
NOV., 2001

P.O.B.
X= 1,879,822.72'
Y= 283,905.06'

BLK. 6

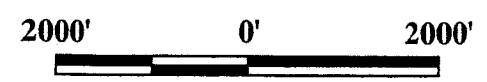
BLK. 5

S.L. 340



29

IBERIA PARISH
EUGENE ISLAND AREA, REVISED



TRACT 33944 - PORTION OF BLOCK 4, EUGENE ISLAND AREA, REVISED, Iberia Parish, Louisiana

That portion of Block 4, Eugene Island Area, Revised, Iberia Parish, Louisiana, belonging to the State of Louisiana and not under mineral lease on November 14, 2001, described as follows: Beginning at the Southeast corner of Block 4, Eugene Island Area, Revised, having Coordinates of X = 1,895,101.00 and Y = 283,905.06; thence West 5,778.28 feet along the South boundary of said Block 4, Eugene Island Area, Revised, to a point having Coordinates of X = 1,889,322.72 and Y = 283,905.06; thence North 5,133.49 feet to a point on the Southern boundary of State Lease No. 4236, as amended, having Coordinates of X = 1,889,322.72 and Y = 289,038.55; thence along the Southern boundary of said State Lease No. 4236, as amended, the following courses: South 77 degrees 44 minutes 07 seconds East 181.41 feet to a point having Coordinates of X = 1,889,499.99 and Y = 289,000.01; South 75 degrees 22 minutes 45 seconds East 1,188.49 feet to a point having Coordinates of X = 1,890,649.99 and Y = 288,700.01; South 72 degrees 28 minutes 28 seconds East 996.24 feet to a point having Coordinates of X = 1,891,599.99 and Y = 288,400.01; South 59 degrees 02 minutes 10 seconds East 583.10 feet to a point having Coordinates of X = 1,892,099.99 and Y = 288,100.01; South 57 degrees 10 minutes 17 seconds East 737.84 feet to a point having Coordinates of X = 1,892,719.99 and Y = 287,700.00; South 61 degrees 19 minutes 37 seconds East 1,458.90 feet to a point having Coordinates of X = 1,893,999.99 and Y = 287,000.01; South 68 degrees 57 minutes 45 seconds East 557.14 feet to a point having Coordinates of X = 1,894,520.00 and Y = 286,800.01; South 76 degrees 40 minutes 32 seconds East 550.69 feet to the Southeast corner of said State Lease No. 4236, as amended, having Coordinates of X = 1,895,055.86 and Y = 286,673.09; thence East 45.14 feet to a point on the East boundary of said Block 4, Eugene Island Area, Revised, having Coordinates of X = 1,895,101.00 and Y = 286,673.09; thence South 2,768.03 feet along the said East boundary of Block 4, Eugene Island Area, Revised, to the point of beginning, containing approximately **534.08 acres**, as shown outlined on a plat on file in the Office of Mineral Resources, Department of Natural Resources, as provided by the applicant. All bearings, distances and coordinates are based on Louisiana Coordinate System of 1927 (South Zone).

NOTE: The above description of the tract nominated for lease has been provided exclusively by the party nominating the tract for lease. The Louisiana State Mineral Board makes no representation as to the accuracy of the description of the nominated tract or its suitability for lease. The Louisiana State Mineral Board has made no inspection of the nominated tract for the existence of conflicting leases, operating agreements, private claims or other existing or future obligations or conditions which may affect all or any portion of the nominated tract or its suitability for lease.

Maps depicting the nominated tract, containing the bearings, distances and coordinates of the nominated tract based on the Louisiana Coordinate System of 1927, North or South Zone, as applicable, are available for public inspection and review at the offices of the Louisiana State Mineral Board from 10:00 a.m. to 3:00 p.m. Monday - Friday.

In the event of conflict between the description of the nominated tract set forth above and the description of the nominated property as contained on the maps maintained at the offices of the Louisiana