

GULF OF MEXICO

BLK. 7

BLK. 6

TR 33939  
2,496.82 ± ACS.  
NOV., 2001

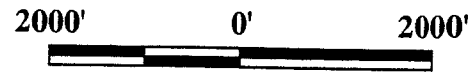
S.L. 16194

P.O.B.  
X= 1,864,800.56'  
Y= 269,892.58'

IBERIA PARISH  
EUGENE ISLAND AREA, REVISED

BLK. 10

BLK. 11



15

**TRACT 33940 - PORTION OF BLOCK 6, EUGENE ISLAND AREA, REVISED, Iberia Parish, Louisiana**

That portion of Block 6, Eugene Island Area, Revised, Iberia Parish, Louisiana, belonging to the State of Louisiana and not under mineral lease on November 14, 2001, described as follows: Beginning at the Northeast corner of Block 6, Eugene Island Area, Revised, having Coordinates of X = 1,879,822.72 and Y = 284,391.16; thence South 14,498.58 feet along the East boundary of said Block 6, Eugene Island Area, Revised, to its Southeast corner having Coordinates of X = 1,879,822.72 and Y = 269,892.58; thence West 5,522.16 feet along the South boundary of said Block 6, Eugene Island Area, Revised to a point having Coordinates of X = 1,874,300.56 and Y = 269,892.58; thence North 14,498.58 feet to a point on the North boundary of said Block 6, Eugene Island Area, Revised, having Coordinates of X = 1,874,300.56 and Y = 284,391.16; thence East 5,522.16 feet along the said North boundary of Block 6, Eugene Island Area, Revised, to the point of beginning, containing approximately **1,838.00 acres**, as shown outlined on a plat on file in the Office of Mineral Resources, Department of Natural Resources, as provided by the applicant. All bearings, distances and coordinates are based on Louisiana Coordinate System of 1927 (South Zone).

NOTE: The above description of the tract nominated for lease has been provided exclusively by the party nominating the tract for lease. The Louisiana State Mineral Board makes no representation as to the accuracy of the description of the nominated tract or its suitability for lease. The Louisiana State Mineral Board has made no inspection of the nominated tract for the existence of conflicting leases, operating agreements, private claims or other existing or future obligations or conditions which may affect all or any portion of the nominated tract or its suitability for lease.

Maps depicting the nominated tract, containing the bearings, distances and coordinates of the nominated tract based on the Louisiana Coordinate System of 1927, North or South Zone, as applicable, are available for public inspection and review at the offices of the Louisiana State Mineral Board from 10:00 a.m. to 3:00 p.m. Monday - Friday.

In the event of conflict between the description of the nominated tract set forth above and the description of the nominated property as contained on the maps maintained at the offices of the Louisiana State Mineral Board, the Louisiana State Mineral Board maps shall prevail and shall provide the final property description of the lease to be awarded of the nominated tract.

Any mineral lease of the nominated tract by the Louisiana State Mineral Board shall be without warranty of any kind, either express, implied, or statutory, including, but not limited to, the implied warranties or merchantability and fitness for a particular purpose. Should the mineral lease of the nominated tract awarded by the Louisiana State Mineral Board be subsequently modified, cancelled or abrogated due to the existence of conflicting leases, operating agreements, private claims or other existing of future obligations or conditions which may affect all or any portion of the leased tract, it shall not relieve the Lessee of the obligation to pay any bonus due thereon to the Louisiana State Mineral Board, nor shall the Louisiana State Mineral Board be obligated to refund any

consideration paid by the Lessee prior to such modification, cancellation, or abrogation, including, but not limited to, bonuses, rents and royalties.

NOTE: The above tract is located in or near an oyster restricted area and all operations in such area must be conducted in strict conformity with the stipulations and/or regulations of the Louisiana Department of Wildlife and Fisheries.

NOTE: The above described tract is in the vicinity of existing shell reefs where drilling and dredging operations must be conducted in strict conformity with the regulations adopted by the Louisiana Department of Wildlife and Fisheries and/or the U.S. Corps of Engineers, U.S. Army.

NOTE: The State of Louisiana does hereby reserve, and this lease shall be subject to, the imprescriptible right of surface use in the nature of a servitude in favor of the Department of Natural Resources, including its Offices and Commissions, for the sole purpose of implementing, constructing, servicing and maintaining approved coastal zone management and/or restoration projects. Utilization of any and all rights derived under this lease by the mineral lessee, its agents, successors or assigns, shall not interfere with nor hinder the reasonable surface use by the Department of Natural Resources, its Offices or Commissions, as hereinabove reserved.

Applicant: Mineral Services, Inc.

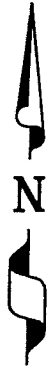
Bidder	Cash Payment	Price / Acre	Rental	Oil	Gas	Other

BLK. 3

BLK. 4

P.O.B.  
X= 1,879,822.72'  
Y= 284,391.16'

GULF OF MEXICO



BLK. 6

TR 33940  
1,838.00 ± ACS.  
NOV., 2001

BLK. 5

IBERIA PARISH  
EUGENE ISLAND AREA, REVISED

BLK. 11

BLK. 12

2000'

0'

2000'



81

**TRACT 33941 - Iberia Parish, Louisiana**

All of the lands now or formerly constituting the beds and bottoms of all water bodies of every nature and description and all islands and other lands formed by accretion or reliction, except tax lands, owned by and not under mineral lease from the State of Louisiana on November 14, 2001, situated in Iberia Parish, Louisiana, within the following described boundaries: Beginning at the Northeast corner of Block 4, Eugene Island Area, Revised, having Coordinates of X = 1,895,101.00 and Y = 297,634.00; thence West 10,000.00 feet along the North boundary of said Block 4, Eugene Island Area, Revised, to a point having Coordinates of X = 1,885,101.00 and Y = 297,634.00; thence North 8,000.00 feet to a point having Coordinates of X = 1,885,101.00 and Y = 305,634.00; thence East 10,000.00 feet to a point having Coordinates of X = 1,895,101.00 and Y = 305,634.00; thence South 8,000.00 feet to the point of beginning, containing approximately 1,836.55 acres, as shown outlined on a plat on file in the Office of Mineral Resources, Department of Natural Resources, as provided by the applicant. All bearings, distances and coordinates are based on Louisiana Coordinate System of 1927 (South Zone).

NOTE: The above description of the tract nominated for lease has been provided exclusively by the party nominating the tract for lease. The Louisiana State Mineral Board makes no representation as to the accuracy of the description of the nominated tract or its suitability for lease. The Louisiana State Mineral Board has made no inspection of the nominated tract for the existence of conflicting leases, operating agreements, private claims or other existing or future obligations or conditions which may affect all or any portion of the nominated tract or its suitability for lease.

Maps depicting the nominated tract, containing the bearings, distances and coordinates of the nominated tract based on the Louisiana Coordinate System of 1927, North or South Zone, as applicable, are available for public inspection and review at the offices of the Louisiana State Mineral Board from 10:00 a.m. to 3:00 p.m. Monday - Friday.

In the event of conflict between the description of the nominated tract set forth above and the description of the nominated property as contained on the maps maintained at the offices of the Louisiana State Mineral Board, the Louisiana State Mineral Board maps shall prevail and shall provide the final property description of the lease to be awarded of the nominated tract.

Any mineral lease of the nominated tract by the Louisiana State Mineral Board shall be without warranty of any kind, either express, implied, or statutory, including, but not limited to, the implied warranties or merchantability and fitness for a particular purpose. Should the mineral lease of the nominated tract awarded by the Louisiana State Mineral Board be subsequently modified, cancelled or abrogated due to the existence of conflicting leases, operating agreements, private claims or other existing of future obligations or conditions which may affect all or any portion of the leased tract, it shall not relieve the Lessee of the obligation to pay any bonus due thereon to the Louisiana State Mineral Board, nor shall the Louisiana State Mineral Board be obligated to refund any consideration paid by the Lessee prior to such modification,

cancellation, or abrogation, including, but not limited to, bonuses, rents and royalties.

NOTE: The above tract is located in or near an oyster restricted area and all operations in such area must be conducted in strict conformity with the stipulations and/or regulations of the Louisiana Department of Wildlife and Fisheries.

NOTE: The above described tract is in the vicinity of existing shell reefs where drilling and dredging operations must be conducted in strict conformity with the regulations adopted by the Louisiana Department of Wildlife and Fisheries and/or the U.S. Corps of Engineers, U.S. Army.

NOTE: The State of Louisiana does hereby reserve, and this lease shall be subject to, the imprescriptible right of surface use in the nature of a servitude in favor of the Department of Natural Resources, including its Offices and Commissions, for the sole purpose of implementing, constructing, servicing and maintaining approved coastal zone management and/or restoration projects. Utilization of any and all rights derived under this lease by the mineral lessee, its agents, successors or assigns, shall not interfere with nor hinder the reasonable surface use by the Department of Natural Resources, its Offices or Commissions, as hereinabove reserved.

Applicant: Mineral Services, Inc.

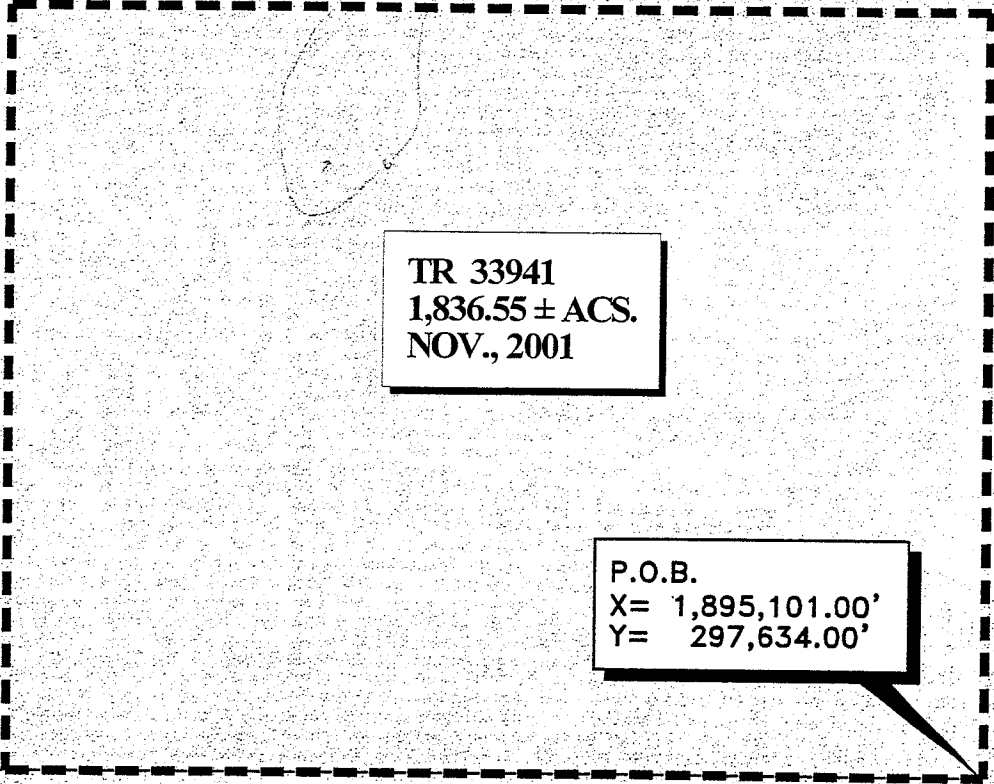
Bidder	Cash Payment	Price / Acre	Rental	Oil	Gas	Other

EAST COTE BLANCHE BAY

Shell Reefs

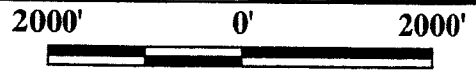
TR 33941  
1,836.55 ± ACS.  
NOV., 2001

P.O.B.  
X= 1,895,101.00'  
Y= 297,634.00'



EUGENE AREA, REVISED, BLOCK 4

IBERIA PARISH



21

**TRACT 33942 - PORTION OF BLOCK 4, EUGENE ISLAND AREA, REVISED, Iberia Parish, Louisiana**

That portion of Block 4, Eugene Island Area, Revised, Iberia Parish, Louisiana, belonging to the State of Louisiana and not under mineral lease on November 14, 2001, described as follows: Beginning at the Northeast corner of Block 4, Eugene Island Area, Revised, having Coordinates of X = 1,895,101.00 and Y = 297,634.00; thence South 2,040.69 feet along the East boundary of said Block 4, Eugene Island Area, Revised, to a point having Coordinates of X = 1,895,101.00 and Y = 295,593.31; thence West 24.38 feet to the Northeast corner of State Lease No. 4236, as amended, having Coordinates of X = 1,895,076.62 and Y = 295,593.31; thence along the North boundary of said State Lease No. 4236, as amended, the following courses: South 49 degrees 58 minutes 56 seconds West 230.63 feet to a point having Coordinates of X = 1,894,899.99 and Y = 295,445.01; South 41 degrees 57 minutes 06 seconds West 598.35 feet to a point having Coordinates of X = 1,894,499.99 and Y = 295,000.01; South 40 degrees 21 minutes 52 seconds West 524.98 feet to a point having Coordinates of X = 1,894,159.99 and Y = 294,600.00; South 38 degrees 12 minutes 40 seconds West 598.16 feet to a point having Coordinates of X = 1,893,789.99 and Y = 294,130.01; South 38 degrees 24 minutes 12 seconds West 1,046.38 feet to a point having Coordinates of X = 1,893,139.99 and Y = 293,310.00; South 42 degrees 42 minutes 34 seconds West 530.75 feet to a point having Coordinates of X = 1,892,779.99 and Y = 292,920.01; South 55 degrees 24 minutes 28 seconds West 352.28 feet to a point having Coordinates of X = 1,892,489.99 and Y = 292,720.01; South 56 degrees 02 minutes 27 seconds West 590.76 feet to a point having Coordinates of X = 1,891,999.99 and Y = 292,390.01; South 70 degrees 23 minutes 16 seconds West 923.58 feet to a point having Coordinates of X = 1,891,129.99 and Y = 292,080.01; South 77 degrees 35 minutes 14 seconds West 2,140.02 feet to a point having Coordinates of X = 1,889,040.00 and Y = 291,620.00; South 80 degrees 50 minutes 16 seconds West 628.01 feet to a point having Coordinates of X = 1,888,420.00 and Y = 291,520.00; South 88 degrees 48 minutes 15 seconds West 958.35 feet to the Northeast corner of State Lease No. 5492, as amended, having Coordinates of X = 1,887,461.87 and Y = 291,500.00; thence along the Northern boundary of said State Lease No. 5492, as amended, the following courses: West 361.86 feet to a point having Coordinates of X = 1,887,100.00 and Y = 291,500.00; South 83 degrees 05 minutes 20 seconds West 332.42 feet to a point having Coordinates of X = 1,886,770.00 and Y = 291,460.00; South 77 degrees 00 minutes 19 seconds West 266.83 feet to a point having Coordinates of X = 1,886,510.00 and Y = 291,400.00; South 66 degrees 30 minutes 05 seconds West 250.80 feet to a point having Coordinates of X = 1,886,280.00 and Y = 291,300.00; South 58 degrees 46 minutes 54 seconds West 385.88 feet to a point having Coordinates of X = 1,885,950.00 and Y = 291,100.00; South 53 degrees 42 minutes 26 seconds West 558.31 feet to the most Westerly corner of said State Lease No. 5492, as amended, having Coordinates of X = 1,885,500.00 and Y = 290,769.53; thence South 52 degrees 55 minutes 41 seconds West 500.07 feet along the Northern boundary of said State Lease No. 4236, as amended, to a point having Coordinates of X = 1,885,101.00 and Y = 290,468.08; thence North 7,165.92 feet to a point on the North boundary of said Block 4, Eugene Island Area, Revised, having Coordinates of X = 1,885,101.00 and Y = 297,634.00; thence East 10,000.00 feet along the said North boundary of Block 4, Eugene Island Area, Revised, to the point of beginning, containing approximately **1,223.03 acres**, as shown outlined on a plat on file in the Office of Mineral