

seconds East - 2,143.64 feet along the South line of said State Lease No. 16928 to its Southeast corner having Coordinates of X = 2,630,018.00 and Y = 306,955.00; thence North 13 degrees 13 minutes 42 seconds West - 642.04 feet along the East line of said State Lease No. 16928 to its Northeast corner, said corner also being a point on the North line of said Block 31, Main Pass Area, Revised, having Coordinates of X = 2,629,871.08 and Y = 307,580.00; thence East - 5,478.92 feet along the North line of said Block 31, Main Pass Area, Revised, to the point of beginning, **LESS AND EXCEPT** all of State Lease No. 16927 that may lie within the above described tract, containing approximately 1,615.67 acres, as shown outlined on a plat on file in the Office of Mineral Resources, Department of Natural Resources, as provided by the applicant. All bearings, distances and coordinates are based on Louisiana Coordinate System of 1927 (South Zone).

NOTE: The above description of the tract nominated for lease has been provided exclusively by the party nominating the tract for lease. The Louisiana State Mineral Board makes no representation as to the accuracy of the description of the nominated tract or its suitability for lease. The Louisiana State Mineral Board has made no inspection of the nominated tract for the existence of conflicting leases, operating agreements, private claims or other existing or future obligations or conditions which may affect all or any portion of the nominated tract or its suitability for lease.

Maps depicting the nominated tract, containing the bearings, distances and coordinates of the nominated tract based on the Louisiana Coordinate System of 1927, North or South Zone, as applicable, are available for public inspection and review at the offices of the Louisiana State Mineral Board from 10:00 a.m. to 3:00 p.m. Monday - Friday.

In the event of conflict between the description of the nominated tract set forth above and the description of the nominated property as contained on the maps maintained at the offices of the Louisiana State Mineral Board, the Louisiana State Mineral Board maps shall prevail and shall provide the final property description of the lease to be awarded of the nominated tract.

Any mineral lease of the nominated tract by the Louisiana State Mineral Board shall be without warranty of any kind, either express, implied, or statutory, including, but not limited to, the implied warranties or merchantability and fitness for a particular purpose. Should the mineral lease of the nominated tract awarded by the Louisiana State Mineral Board be subsequently modified, cancelled or abrogated due to the existence of conflicting leases, operating agreements, private claims or other existing or future obligations or conditions which may affect all or any portion of the leased tract, it shall not relieve the Lessee of the obligation to pay any bonus due thereon to the Louisiana State Mineral Board, nor shall the Louisiana State Mineral Board be obligated to refund any consideration paid by the Lessee prior to such modification, cancellation, or abrogation, including, but not limited to, bonuses, rents and royalties.

NOTE: The State of Louisiana does hereby reserve, and this lease shall be subject to, the imprescriptible right of surface use in the nature

of a servitude in favor of the Department of Natural Resources, including its Offices and Commissions, for the sole purpose of implementing, constructing, servicing and maintaining approved coastal zone management and/or restoration projects. Utilization of any and all rights derived under this lease by the mineral lessee, its agents, successors or assigns, shall not interfere with nor hinder the reasonable surface use by the Department of Natural Resources, its Offices or Commissions, as hereinabove reserved.

Applicant: Clark W. Rider and Associates, Inc.

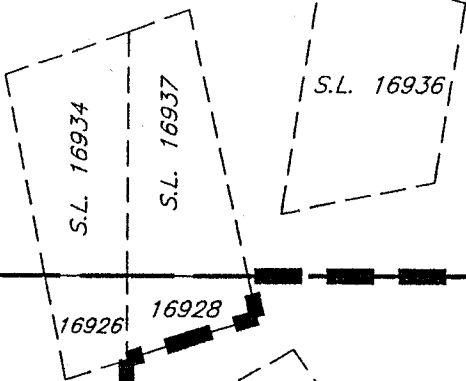
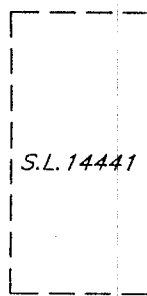
Bidder	Cash Payment	Price / Acre	Rental	Oil	Gas	Other

Blk. 25

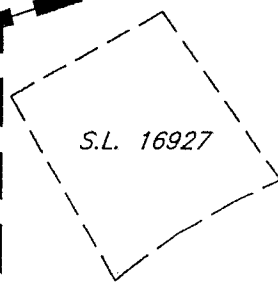
Blk. 26

Blk. 33

<b>P.O.B.</b>
X = 2,635,350.00
Y = 307,580.00



16926 16928



Blk. 32

<b>TR 33966</b>
<b>1,615.67 ± ACS.</b>
<b>NOV., 2001</b>

Blk. 31

48

S.L. 1958  
(AS AMENDED)

S.L. 2125

OF

S.L. 12002  
(AS AMENDED)

MEXICO

MAIN PASS AREA, REVISED  
BRETON SOUND AREA, REVISED

NAD 1927 (South Zone)

Blk. 35

GULF

Blk. 36

S.L. 16929

S.L. 16930

Blk. 49

**TRACT 33967 - PORTION OF BLOCK 36, MAIN PASS AREA, REVISED, Plaquemines Parish, Louisiana**

All of the lands now or formerly constituting the beds and bottoms of all water bodies of every nature and description and all islands and other lands formed by accretion or reliction, except tax lands, belonging to the State of Louisiana and not under mineral lease on November 14, 2001, situated in Plaquemines Parish, Louisiana, and more particularly described as follows: Beginning at the Northwest corner of Block 36, Main Pass Area, Revised having Coordinates of X = 2,620,600.00 and Y = 292,830.00; thence East - 9,507.63 feet along the North line of said Block 36, Main Pass Area, Revised, to the most Northerly Northeast corner of State Lease No. 16930 having Coordinates of X = 2,630,107.63 and Y = 292,830.00; thence South 18 degrees 00 minutes 42 seconds West - 1,201.34 feet along the boundary of said State Lease No. 16930 to a corner having Coordinates of X = 2,629,736.16 and Y = 291,687.53; thence South 36 degrees 47 minutes 02 seconds West - 927.12 feet along the boundary of said State Lease No. 16930 to a corner having Coordinates of X = 2,629,181.00 and Y = 290,945.00; thence South 58 degrees 55 minutes 29 seconds East - 1,763.01 feet along the boundary of said State Lease No. 16930 to a corner having Coordinates of X = 2,630,691.00 and Y = 290,035.00; thence South 19 degrees 34 minutes 55 seconds East - 805.59 feet along the boundary of said State Lease No. 16930 to a corner having Coordinates of X = 2,630,961.00 and Y = 289,276.00; thence South 69 degrees 26 minutes 38 seconds East - 2,392.32 feet along the boundary of said State Lease No. 16930 to a corner having Coordinates of X = 2,633,201.00 and Y = 288,436.00; thence North 48 degrees 24 minutes 10 seconds East - 1,310.46 feet along the boundary of said State Lease No. 16930 to a corner having Coordinates of X = 2,634,181.00 and Y = 289,306.00; thence North 86 degrees 34 minutes 24 seconds East - 1,171.09 feet along the boundary of said State Lease No. 16930 to its most Easterly Southeast corner, said corner also being a point on the East line of said Block 36, Main Pass Area, Revised, having Coordinates of X = 2,635,350.00 and Y = 289,376.00; thence South - 11,296.00 feet along the East line of said Block 36, Main Pass Area, Revised, to its Southeast corner having Coordinates of X = 2,635,350.00 and Y = 278,080.00; thence West - 766.48 feet along the South line of said Block 36, Main Pass Area, Revised, to the Southeast corner of State Lease No. 14964, as amended, having Coordinates of X = 2,634,583.52 and Y = 278,080.00; thence North - 5,933.52 feet along the East line of said State Lease No. 14964, as amended, to its Northeast corner having Coordinates of X = 2,634,583.52 and Y = 284,013.52; thence West - 7,467.05 feet along the North line of said State Lease No. 14964, as amended, to its Northwest corner, said corner also being a point on the East line of State Lease No. 16766, having Coordinates of X = 2,627,116.47 and Y = 284,013.52; thence North - 1,441.48 feet along the East line of said State Lease No. 16766 to its Northeast corner having Coordinates of X = 2,627,116.47 and Y = 285,455.00; thence West - 5,916.47 feet along the North line of said State Lease No. 16766 to its Northwest corner having Coordinates of X = 2,621,200.00 and Y = 285,455.00; thence West - 600.00 feet to a point on the West line of said Block 36, Main Pass Area, Revised, having Coordinates of X = 2,620,600.00 and Y = 285,455.00; thence North - 7,375.00 feet along the West line of said Block 36, Main Pass Area, Revised, to the point of beginning, containing approximately **2,410.45 acres**, as shown outlined on a plat on file in the Office of Mineral Resources, Department of Natural Resources, as provided by the applicant. All bearings, distances and coordinates are based on Louisiana Coordinate System of 1927 (South Zone).

NOTE: The above description of the tract nominated for lease has been provided exclusively by the party nominating the tract for lease. The Louisiana State Mineral Board makes no representation as to the accuracy of the description of the nominated tract or its suitability for lease. The Louisiana State Mineral Board has made no inspection of the nominated tract for the existence of conflicting leases, operating agreements, private claims or other existing or future obligations or conditions which may affect all or any portion of the nominated tract or its suitability for lease.

Maps depicting the nominated tract, containing the bearings, distances and coordinates of the nominated tract based on the Louisiana Coordinate System of 1927, North or South Zone, as applicable, are available for public inspection and review at the offices of the Louisiana State Mineral Board from 10:00 a.m. to 3:00 p.m. Monday - Friday.

In the event of conflict between the description of the nominated tract set forth above and the description of the nominated property as contained on the maps maintained at the offices of the Louisiana State Mineral Board, the Louisiana State Mineral Board maps shall prevail and shall provide the final property description of the lease to be awarded of the nominated tract.

Any mineral lease of the nominated tract by the Louisiana State Mineral Board shall be without warranty of any kind, either express, implied, or statutory, including, but not limited to, the implied warranties or merchantability and fitness for a particular purpose. Should the mineral lease of the nominated tract awarded by the Louisiana State Mineral Board be subsequently modified, cancelled or abrogated due to the existence of conflicting leases, operating agreements, private claims or other existing of future obligations or conditions which may affect all or any portion of the leased tract, it shall not relieve the Lessee of the obligation to pay any bonus due thereon to the Louisiana State Mineral Board, nor shall the Louisiana State Mineral Board be obligated to refund any consideration paid by the Lessee prior to such modification, cancellation, or abrogation, including, but not limited to, bonuses, rents and royalties.

NOTE: The State of Louisiana does hereby reserve, and this lease shall be subject to, the imprescriptible right of surface use in the nature of a servitude in favor of the Department of Natural Resources, including its Offices and Commissions, for the sole purpose of implementing, constructing, servicing and maintaining approved coastal zone management and/or restoration projects. Utilization of any and all rights derived under this lease by the mineral lessee, its agents, successors or assigns, shall not interfere with nor hinder the reasonable surface use by the Department of Natural Resources, its Offices or Commissions, as hereinabove reserved.

Applicant: Clark W. Rider and Associates, Inc.

Bidder	Cash Payment	Price / Acre	Rental	Oil	Gas	Other

107

S.L. 12002 (AS AMENDED)

**Blk. 32**

S.L. 1958  
(AS AMENDED)

S.L. 2125

**Blk. 31**

**Blk. 48**

S.L. 16929

S.L. 16930

**M A I N P A S S A R E A, R E V I S E D**

**B R E T T O N S O U N D A R E A, R E V I S E D**

**P.O.B.**  
X = 2,620,600.00  
Y = 292,830.00

**TR 33967**  
**2,410.45 ± ACS.**  
**NOV., 2001**

**Blk. 35**

**Blk. 36**

**49**

S.L. 16766

S.L. 14964 (AS AMENDED)

S.L. 14959 (AS AMENDED)

S.L. 16771

**Blk. 50**

S.L. 13382

**Blk. 49**

**Blk. 48**

NAD 1927 (South Zone)

PLAQUEMINES PARISH, LOUISIANA

SCALE : 1" = 3000'

**TRACT 33968 - PORTION OF BLOCK 48, BRETON SOUND AREA, Plaquemines Parish, Louisiana**

All of the lands now or formerly constituting the beds and bottoms of all water bodies of every nature and description and all islands and other lands formed by accretion or reliction, except tax lands, belonging to the State of Louisiana and not under mineral lease on November 14, 2001, situated in Plaquemines Parish, Louisiana, and more particularly described as follows: Beginning at a point having Coordinates of X = 2,635,350.00 and Y = 292,830.00, said point also being the Southwest corner of Block 48, Breton Sound Area; thence North 14,750.00 feet on and along the West line of said Block 48, Breton Sound Area, to a point having Coordinates of X = 2,635,350.00 and Y = 307,580.00, said point also being the Northwest corner of said Block 48, Breton Sound Area; thence East 7,375.00 feet on and along the North line of said Block 48, Breton Sound Area, to a point having Coordinates of X = 2,642,725.00 and Y = 307,580.00; thence South 14,750.00 feet to a point having Coordinates of X = 2,642,725.00 and Y = 292,830.00, said point also being on the South line of said Block 48, Breton Sound Area; thence West 7,375.00 feet on and along said South line of said Block 48, Breton Sound Area, to the point of beginning, containing approximately **2,497.27 acres**, as shown outlined on a plat on file in the Office of Mineral Resources, Department of Natural Resources, as provided by the applicant. All bearings, distances and coordinates are based on Louisiana Coordinate System of 1927 (South Zone).

NOTE: The above description of the tract nominated for lease has been provided exclusively by the party nominating the tract for lease. The Louisiana State Mineral Board makes no representation as to the accuracy of the description of the nominated tract or its suitability for lease. The Louisiana State Mineral Board has made no inspection of the nominated tract for the existence of conflicting leases, operating agreements, private claims or other existing or future obligations or conditions which may affect all or any portion of the nominated tract or its suitability for lease.

Maps depicting the nominated tract, containing the bearings, distances and coordinates of the nominated tract based on the Louisiana Coordinate System of 1927, North or South Zone, as applicable, are available for public inspection and review at the offices of the Louisiana State Mineral Board from 10:00 a.m. to 3:00 p.m. Monday - Friday.

In the event of conflict between the description of the nominated tract set forth above and the description of the nominated property as contained on the maps maintained at the offices of the Louisiana State Mineral Board, the Louisiana State Mineral Board maps shall prevail and shall provide the final property description of the lease to be awarded of the nominated tract.

Any mineral lease of the nominated tract by the Louisiana State Mineral Board shall be without warranty of any kind, either express, implied, or statutory, including, but not limited to, the implied warranties or merchantability and fitness for a particular purpose. Should the mineral lease of the nominated tract awarded by the Louisiana State Mineral Board be subsequently modified, cancelled or abrogated due to the existence of conflicting leases, operating agreements, private claims or other existing of future obligations