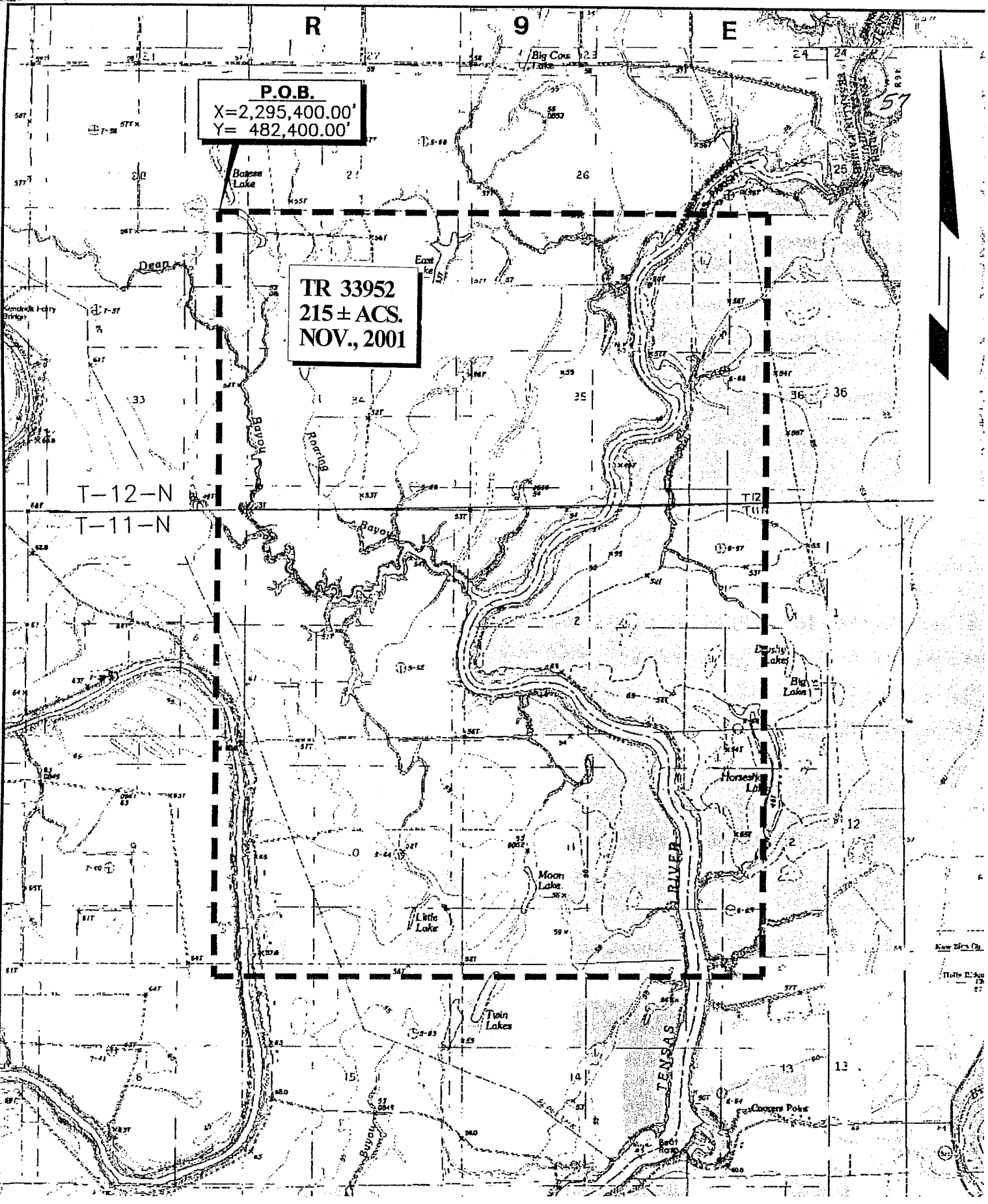


R 9 E

P.O.B.
X=2,295,400.00'
Y= 482,400.00'

TR 33952
215 ± ACS.
NOV., 2001

T-12-N
T-11-N



FRANKLIN & TENSAS PARISHES, LOUISIANA/
SCALE : 1" = 3000'

TRACT 33953 - Vermilion Parish, Louisiana

All of the lands now or formerly constituting the beds and bottoms of all water bodies of every nature and description and all islands and other lands formed by accretion or reliction, except tax lands, owned by and not under mineral lease from the State of Louisiana on November 14, 2001, situated in Vermilion Parish, Louisiana, within the following described boundaries: Beginning at a point being the Southeast corner of State Lease No. 16140 and the Southwest corner of State Lease No. 16143 having Coordinates of X = 1,765,977.00 and Y = 363,690.88; thence East 5,264.82 feet along the South line of said State Lease No. 16143 to its Southeast corner, also being the Southwest corner of State Lease No. 16145 having Coordinates of X = 1,771,241.82 and Y = 363,690.88; thence South 9,057.13 feet to the Northeast corner of State Lease No. 16142 having Coordinates of X = 1,771,241.82 and Y = 354,633.75; thence West 5,264.82 feet along the North line of said State Lease No. 16142 to its Northwest corner, also being a point on the East line of State Lease No. 16141 having Coordinates of X = 1,765,977.00 and Y = 354,633.75; thence North 6,566.25 feet along the East line of said State Lease No. 16141 to its Northeast corner having Coordinates of X = 1,765,977.00 and Y = 361,200.00; thence North 2,490.88 feet to the point of beginning, containing approximately **1,094.68 acres**, as shown outlined on a plat on file in the Office of Mineral Resources, Department of Natural Resources, as provided by the applicant. All bearings, distances and coordinates are based on Louisiana Coordinate System of 1927 (South Zone).

NOTE: The above description of the tract nominated for lease has been provided exclusively by the party nominating the tract for lease. The Louisiana State Mineral Board makes no representation as to the accuracy of the description of the nominated tract or its suitability for lease. The Louisiana State Mineral Board has made no inspection of the nominated tract for the existence of conflicting leases, operating agreements, private claims or other existing or future obligations or conditions which may affect all or any portion of the nominated tract or its suitability for lease.

Maps depicting the nominated tract, containing the bearings, distances and coordinates of the nominated tract based on the Louisiana Coordinate System of 1927, North or South Zone, as applicable, are available for public inspection and review at the offices of the Louisiana State Mineral Board from 10:00 a.m. to 3:00 p.m. Monday - Friday.

In the event of conflict between the description of the nominated tract set forth above and the description of the nominated property as contained on the maps maintained at the offices of the Louisiana State Mineral Board, the Louisiana State Mineral Board maps shall prevail and shall provide the final property description of the lease to be awarded of the nominated tract.

Any mineral lease of the nominated tract by the Louisiana State Mineral Board shall be without warranty of any kind, either express, implied, or statutory, including, but not limited to, the implied warranties or merchantability and fitness for a particular purpose. Should the mineral lease of the nominated tract awarded by the Louisiana State Mineral Board be subsequently modified, cancelled or abrogated due to the existence of conflicting leases, operating agreements, private claims or other existing of future obligations

or conditions which may affect all or any portion of the leased tract, it shall not relieve the Lessee of the obligation to pay any bonus due thereon to the Louisiana State Mineral Board, nor shall the Louisiana State Mineral Board be obligated to refund any consideration paid by the Lessee prior to such modification, cancellation, or abrogation, including, but not limited to, bonuses, rents and royalties.

NOTE: The above tract is located in or near an oyster restricted area and all operations in such area must be conducted in strict conformity with the stipulations and/or regulations of the Louisiana Department of Wildlife and Fisheries.

NOTE: The State of Louisiana does hereby reserve, and this lease shall be subject to, the imprescriptible right of surface use in the nature of a servitude in favor of the Department of Natural Resources, including its Offices and Commissions, for the sole purpose of implementing, constructing, servicing and maintaining approved coastal zone management and/or restoration projects. Utilization of any and all rights derived under this lease by the mineral lessee, its agents, successors or assigns, shall not interfere with nor hinder the reasonable surface use by the Department of Natural Resources, its Offices or Commissions, as hereinabove reserved.

Applicant: Angelle & Donohue Oil & Gas Properties, Inc.

Bidder	Cash Payment	Price / Acre	Rental	Oil	Gas	Other

S. L. 4011

S. L. 3306

S. L. 16140

S. L. 16143

S. L. 16145

60

P.O.B.
 X = 1,765,977.00
 Y = 363,690.88

1000' Well

TR 33953
1,094.68 ± ACS.
NOV., 2001

S. L. 16141

MAY 1927 (South Zone)

S. L. 16142

Indian Point

21

PAUL WILSON

28

DAY

30

28

VERMILION PARISH, LOUISIANA

SCALE : 1" = 2000'

TRACT 33954 - St. Mary Parish, Louisiana

All of the lands now or formerly constituting the beds and bottoms of all water bodies of every nature and description and all islands and other lands formed by accretion or reliction, except tax lands, owned by and not under mineral lease from the State of Louisiana on November 14, 2001, situated in St. Mary Parish, Louisiana, within the following described boundaries: Beginning at a point having Coordinates of X = 1,899,428.08 and Y = 371,100.79; thence East a distance of 2,330.90 feet to a point on the Northwest corner of State Lease No. 8091 having Coordinates of X = 1,901,767.98 and Y = 371,100.79; thence South 08 degrees 31 minutes 46 seconds East along the Western boundary of State Lease No. 8091 a distance of 2,528.76 feet to a point at the intersection of Southwest corner of State Lease No. 8091 and the Northwest corner of State Lease No. 9410 having Coordinates of X = 1,902,143.04 and Y = 368,600.00; thence South 08 degrees 31 minutes 46 seconds East along the Western boundary of State Lease No. 9410 a distance of 2,968.29 feet to a point having Coordinates of X = 1,902,583.30 and y = 365,664.54; thence South 87 degrees 05 minutes 16 seconds East along the Southern boundary of State Lease No. 9410 a distance of 4,505.87 feet to a point on the Southeast corner of State Lease No. 9410 having Coordinates of X = 1,907,083.35 and Y = 365,435.61; thence North 00 degrees 12 minutes 33 seconds East along State Lease No. 9410 a distance of 809.39 feet to the Southwest corner of State Lease No. 13470 having Coordinates of X = 1,907,086.31 and Y = 366,245.00; thence East along State Lease No. 13470 a distance of 811.52 feet to a point on the Southeast corner of State Lease No. 13470 having Coordinates of X = 1,907,897.83 and Y = 366,245.00; thence the following bearings and distances along State Lease No. 13470: North 12 degrees 36 minutes 02 seconds West a distance of 242.21 feet; North 10 degrees 23 minutes 57 seconds East a distance of 407.14 feet; North 27 degrees 53 minutes 01 seconds West a distance of 296.17 feet; North 12 degrees 47 minutes 06 seconds East a distance of 81.52 feet; North 44 degrees 15 minutes 39 seconds West a distance of 160.06 feet; North 89 degrees 17 minutes 40 seconds West a distance of 148.61 feet; North 48 degrees 12 minutes 02 seconds West a distance of 87.51; North 15 degrees 53 minutes 47 West a distance of 65.83 feet; North 33 degrees 03 minutes 35 seconds East a distance of 135.38 feet; North 20 degrees 52 minutes 57 seconds East a distance of 170.46 feet; North 09 degrees 45 minutes 21 seconds West a distance of 126.76 feet; North 05 degrees 51 minutes 28 seconds East a distance of 372.72 feet; North 06 degrees 02 minutes 22 seconds East a distance of 183.91 feet; North 17 degrees 51 minutes 36 seconds West a distance of 531.97 feet; North 09 degrees 56 minutes 29 seconds East a distance of 242.24 feet; North 37 degrees 58 minutes 58 seconds West a distance of 154.89 feet; North 01 degrees 46 minutes 17 seconds West a distance of 172.42 feet; north 46 degrees 20 minutes 45 seconds East a distance of 84.90 feet; North 07 degrees 17 minutes 19 seconds West a distance of 242.22; North 35 degrees 05 minutes 59 seconds East a distance of 227.96 feet; North 31 degrees 52 minutes 38 seconds East a distance of 118.01 feet; North 21 degrees 17 minutes 34 seconds East a distance of 284.41 feet; North 29 degrees 24 minutes 22 seconds East a distance of 217.09 feet; North 01 degrees 06 minutes 03 seconds West a distance of 178.03 feet; north 51 degrees 27 minutes 04 seconds East a distance of 55.63 feet to a point having Coordinates of X = 1,907,877.02 and Y = 370,704.25; thence South 73 degrees 52 minutes 36 seconds East along the Southern line of State Lease No. 5176 a distance of 1,727.43 feet to the Southeast corner of State Lease No. 5176

having Coordinates of X = 1,910,893.21 and Y = 369,832.33; thence South 73 degrees 52 minutes 36 seconds East a distance of 1,412.25 feet to a point having Coordinates of X = 1,910,893.21 and Y = 369,832.33; thence South 01 degrees 12 minutes 34 seconds West a distance of 14,535.57 feet to the Northern line of State Lease No. 16585 having Coordinates of X = 1,910,586.40 and Y = 355,300.00; thence West along the Northern line of State Lease No. 16585 a distance of 1,306.40 feet to the intersection of the Southwest corner of State Lease No. 16585 and the Northeast corner of State Lease No. 16584 having Coordinates of X = 1,909,280.00 and Y = 355,300.00; thence West along the Northern line of State Lease No. 16584 a distance of 3,340.00 feet to the Northwest corner of State Lease No. 16584 having Coordinates of X = 1,905,940.00 and Y = 355,300.00; thence West a distance of 6,511.92 feet to a point having Coordinates of X = 1,899,428.08 and Y = 355,300.00; thence North a distance of 15,800.79 feet to the point of beginning, containing approximately 1,996 acres, as shown outlined on a plat on file in the Office of Mineral Resources, Department of Natural Resources, as provided by the applicant. All bearings, distances and coordinates are based on Louisiana Coordinate System of 1927 (South Zone).

NOTE: The above description of the tract nominated for lease has been provided exclusively by the party nominating the tract for lease. The Louisiana State Mineral Board makes no representation as to the accuracy of the description of the nominated tract or its suitability for lease. The Louisiana State Mineral Board has made no inspection of the nominated tract for the existence of conflicting leases, operating agreements, private claims or other existing or future obligations or conditions which may affect all or any portion of the nominated tract or its suitability for lease.

Maps depicting the nominated tract, containing the bearings, distances and coordinates of the nominated tract based on the Louisiana Coordinate System of 1927, North or South Zone, as applicable, are available for public inspection and review at the offices of the Louisiana State Mineral Board from 10:00 a.m. to 3:00 p.m. Monday - Friday.

In the event of conflict between the description of the nominated tract set forth above and the description of the nominated property as contained on the maps maintained at the offices of the Louisiana State Mineral Board, the Louisiana State Mineral Board maps shall prevail and shall provide the final property description of the lease to be awarded of the nominated tract.

Any mineral lease of the nominated tract by the Louisiana State Mineral Board shall be without warranty of any kind, either express, implied, or statutory, including, but not limited to, the implied warranties or merchantability and fitness for a particular purpose. Should the mineral lease of the nominated tract awarded by the Louisiana State Mineral Board be subsequently modified, cancelled or abrogated due to the existence of conflicting leases, operating agreements, private claims or other existing of future obligations or conditions which may affect all or any portion of the leased tract, it shall not relieve the Lessee of the obligation to pay any bonus due thereon to the Louisiana State Mineral Board, nor shall the Louisiana State Mineral Board be obligated to refund any consideration paid by the Lessee prior to such modification,

cancellation, or abrogation, including, but not limited to, bonuses, rents and royalties.

NOTE: The above tract is located in or near an oyster restricted area and all operations in such area must be conducted in strict conformity with the stipulations and/or regulations of the Louisiana Department of Wildlife and Fisheries.

NOTE: The State of Louisiana does hereby reserve, and this lease shall be subject to, the imprescriptible right of surface use in the nature of a servitude in favor of the Department of Natural Resources, including its Offices and Commissions, for the sole purpose of implementing, constructing, servicing and maintaining approved coastal zone management and/or restoration projects. Utilization of any and all rights derived under this lease by the mineral lessee, its agents, successors or assigns, shall not interfere with nor hinder the reasonable surface use by the Department of Natural Resources, its Offices or Commissions, as hereinabove reserved.

Applicant: Kevin Caliva & Associates, Ltd.

Bidder	Cash Payment	Price / Acre	Rental	Oil	Gas	Other

ST. MARY PARISH, LOUISIANA

64

P.O.B.
X=1,899,428.08
Y=371,100.79

EAST 2,339.90'

X=1,901,767.98
Y=371,100.79

S83°31'46"E 2,528.76'

STATE LEASE 8091

STATE LEASE 5176
Gas Well

STATE LEASE 13470

SEC 35

SEC 36

T15S-R8

T16S-R8

X=1,910,893.21
Y=369,832.33

S73°52'36"E 1,727.43'
S73°52'36"E 1,412.25'

X=1,907,877.02
Y=370,704.25

X=1,910,893.21
Y=369,832.33

X=1,902,143.04
Y=368,600.00

S83°31'46"E 2,968.29'

STATE LEASE 9410

X=1,907,086.31
Y=366,245.00

X=1,907,897.83
Y=366,245.00

SEC 2

SEC 1

BAYOU GARLIN FIELD

X=1,902,583.30
Y=365,664.54

S87°05'16"E 4,505.67' Well

EAST 811.52'

N0°12'33"E 809.39'

X=1,907,083.35
Y=365,435.61

NORTH 15,800.79'

WEST COTE BLANCHE BAY

TR 33954
1,996 ± ACS.
NOV., 2001

SEC 11

SEC 12

S112°34'W 14,535.57'

SEC 15

SEC 14

SEC 13

X=1,899,428.08
Y=355,300.00

WEST 6,511.92'

WEST 3,340.00'

WEST 1,306.40'

X=1,905,940.00
Y=355,300.00

X=1,909,280.00
Y=355,300.00

STATE LEASE 16584

STATE LEASE 16585

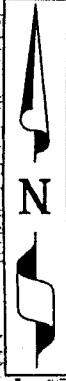
Drill Hole

Scale: 1" = 2,000'

SEC 22

SEC 23

SEC 24



TRACT 33955 - St. Mary Parish, Louisiana

All of the lands now or formerly constituting the beds and bottoms of all water bodies of every nature and description and all islands and other lands formed by accretion or reliction, except tax lands, owned by and not under mineral lease from the State of Louisiana on November 14, 2001, situated in St. Mary Parish, Louisiana, within the following described boundaries: Beginning at a point having Coordinates of X = 1,899,428.08 and Y = 355,300.00; thence East a distance of 6,511.92 feet to a point on the Northwest corner of State Lease No. 16584 having Coordinates of X = 1,905,940.00 and Y = 355,300.00; thence South along the Western boundary line of State Lease No. 16584 a distance of 3,160.00 feet to a point on the Southwest corner of State Lease No. 16584 having Coordinates of X = 1,905,940.00 and Y = 352,140.00; thence East a distance of 3,340.00 feet to a point at the intersection of the Southeast corner of State Lease No. 16584 and the Southwest corner of State Lease No. 16585 having Coordinates of X = 1,909,280.00 and Y = 352,140.00; thence South a distance of 2,340.00 feet to a point on the Northwest corner of State Lease No. 16586 having Coordinates of X = 1,909,380.00 and Y = 349,800.00; thence South along the Western boundary line of State Lease No. 16586 a distance of 5,700.00 feet to a point on the Southwest corner of State Lease No. 16586 having Coordinates of X = 1,909,280.00 and Y = 344,100.00; thence South a distance of 1,600.00 feet to a point on the Northern boundary line of State Lease No. 16381 having Coordinates of X = 1,909,280.00 and Y = 342,500.00; thence West along the Northern boundary line of State Lease No. 16381 a distance of 6,280.00 feet to a point on the Northeast corner of State Lease No. 16381 having Coordinates of X = 1,903,000.00 and Y = 342,500.00; thence West a distance of 3,571.92 feet to a point having Coordinates of X = 1,899,428.08 and Y = 342,500.00; thence North 12,800.00 feet to the point of beginning, containing approximately 2,034 acres, as shown outlined on a plat on file in the Office of Mineral Resources, Department of Natural Resources, as provided by the applicant. All bearings, distances and coordinates are based on Louisiana Coordinate System of 1927 (South Zone).

NOTE: The above description of the tract nominated for lease has been provided exclusively by the party nominating the tract for lease. The Louisiana State Mineral Board makes no representation as to the accuracy of the description of the nominated tract or its suitability for lease. The Louisiana State Mineral Board has made no inspection of the nominated tract for the existence of conflicting leases, operating agreements, private claims or other existing or future obligations or conditions which may affect all or any portion of the nominated tract or its suitability for lease.

Maps depicting the nominated tract, containing the bearings, distances and coordinates of the nominated tract based on the Louisiana Coordinate System of 1927, North or South Zone, as applicable, are available for public inspection and review at the offices of the Louisiana State Mineral Board from 10:00 a.m. to 3:00 p.m. Monday - Friday.

In the event of conflict between the description of the nominated tract set forth above and the description of the nominated property as contained on the maps maintained at the offices of the Louisiana State Mineral Board, the Louisiana State Mineral Board maps shall prevail and shall provide the final property description of the lease