

CALDWELL PARISH, LOUISIANA

T13N - R3E: Section 1  
T13N - R4E: Sections 5, 6, 7, 38,  
40, 41 & 45

310 acres

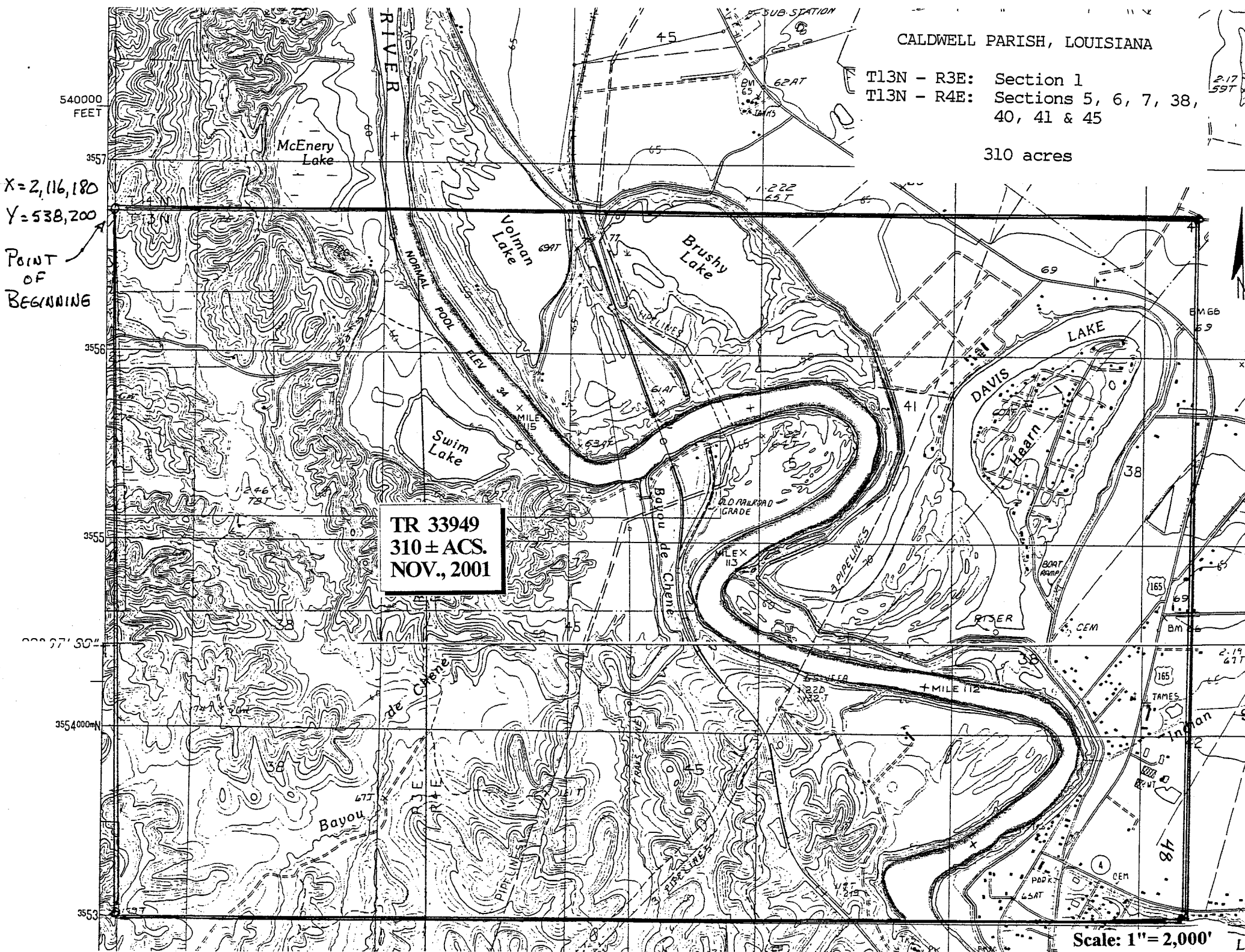
540000  
FEET

X=2,116,180  
Y=538,200

POINT  
OF  
BEGINNING

TR 33949  
310 ± ACS.  
NOV., 2001

Scale: 1"=2,000'



**TRACT 33950 - Franklin and Tensas Parishes, Louisiana**

All of the lands now or formerly constituting the beds and bottoms of all water bodies of every nature and description and all islands and other lands formed by accretion or reliction, except tax lands, owned by and not under mineral lease from the State of Louisiana on November 14, 2001, situated in Franklin and Tensas Parishes, Louisiana, within the following described boundaries: Beginning at a point having Coordinates of X = 2,295,600.00 and Y = 518,400.00; thence East 18,000.00 feet to a point having Coordinates of X = 2,313,600.00 and Y = 500,400.00; thence West 18,000.00 feet to a point having Coordinates of X = 2,295,600.00 and Y = 500,400.00; thence North 18,000.00 feet to the point of beginning, containing approximately **163 acres**, as shown outlined on a plat on file in the Office of Mineral Resources, Department of Natural Resources, as provided by the applicant. All bearings, distances and coordinates are based on Louisiana Coordinate System of 1927 (South Zone).

NOTE: The above description of the tract nominated for lease has been provided exclusively by the party nominating the tract for lease. The Louisiana State Mineral Board makes no representation as to the accuracy of the description of the nominated tract or its suitability for lease. The Louisiana State Mineral Board has made no inspection of the nominated tract for the existence of conflicting leases, operating agreements, private claims or other existing or future obligations or conditions which may affect all or any portion of the nominated tract or its suitability for lease.

Maps depicting the nominated tract, containing the bearings, distances and coordinates of the nominated tract based on the Louisiana Coordinate System of 1927, North or South Zone, as applicable, are available for public inspection and review at the offices of the Louisiana State Mineral Board from 10:00 a.m. to 3:00 p.m. Monday - Friday.

In the event of conflict between the description of the nominated tract set forth above and the description of the nominated property as contained on the maps maintained at the offices of the Louisiana State Mineral Board, the Louisiana State Mineral Board maps shall prevail and shall provide the final property description of the lease to be awarded of the nominated tract.

Any mineral lease of the nominated tract by the Louisiana State Mineral Board shall be without warranty of any kind, either express, implied, or statutory, including, but not limited to, the implied warranties or merchantability and fitness for a particular purpose. Should the mineral lease of the nominated tract awarded by the Louisiana State Mineral Board be subsequently modified, cancelled or abrogated due to the existence of conflicting leases, operating agreements, private claims or other existing of future obligations or conditions which may affect all or any portion of the leased tract, it shall not relieve the Lessee of the obligation to pay any bonus due thereon to the Louisiana State Mineral Board, nor shall the Louisiana State Mineral Board be obligated to refund any consideration paid by the Lessee prior to such modification, cancellation, or abrogation, including, but not limited to, bonuses, rents and royalties.

Applicant: G.M. McFly

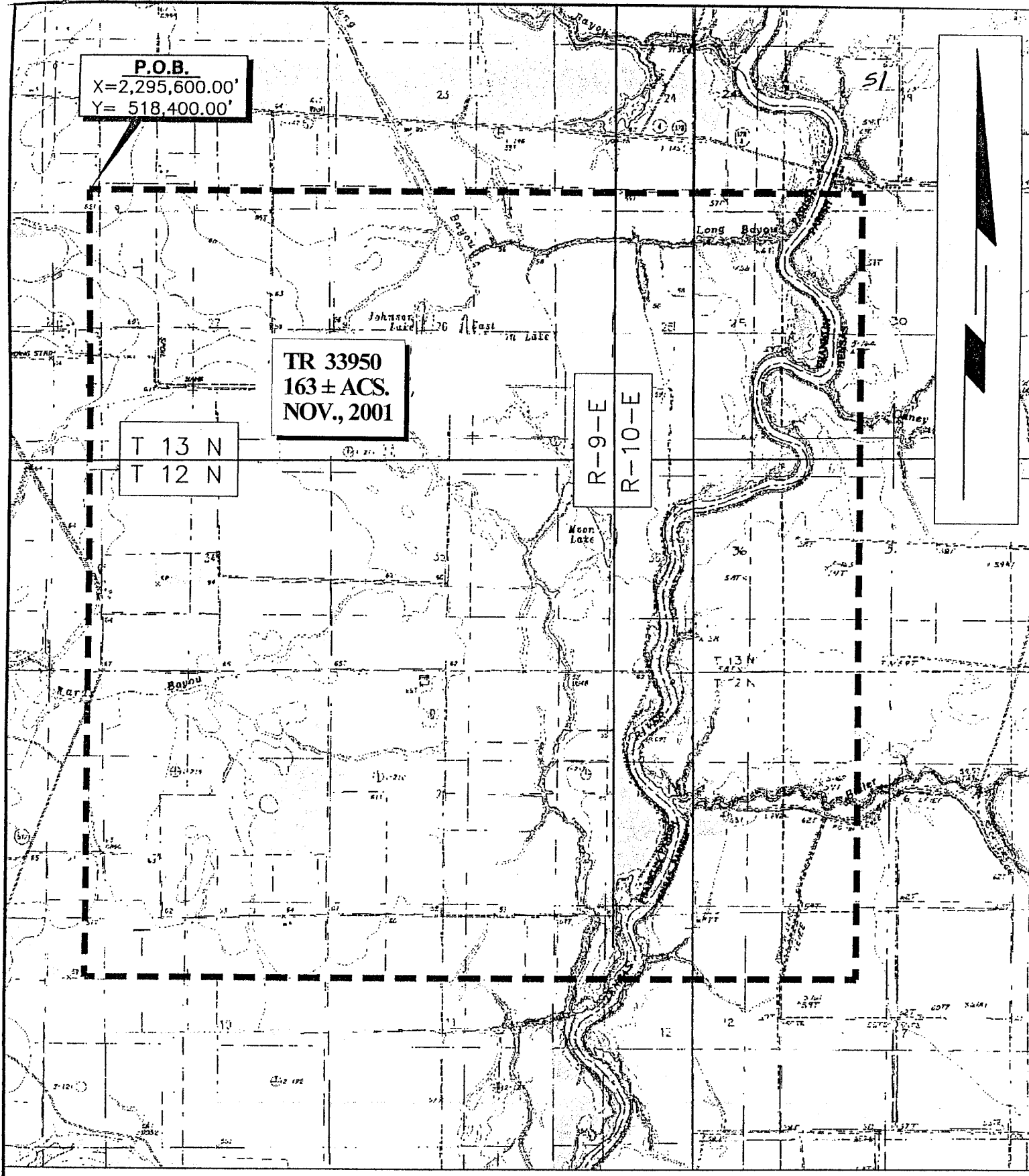
Bidder	Cash Payment	Price / Acre	Rental	Oil	Gas	Other

**P.O.B.**  
X=2,295,600.00'  
Y= 518,400.00'

**TR 33950**  
**163 ± ACS.**  
**NOV., 2001**

T 13 N  
T 12 N

R-9-E  
R-10-E



**TRACT 33951 - Franklin and Tensas Parishes, Louisiana**

All of the lands now or formerly constituting the beds and bottoms of all water bodies of every nature and description and all islands and other lands formed by accretion or reliction, except tax lands, owned by and not under mineral lease from the State of Louisiana on November 14, 2001, situated in Franklin and Tensas Parishes, Louisiana, within the following described boundaries: Beginning at a point having Coordinates of X = 2,294,700.00 and Y = 500,400.00; thence East 18,000.00 feet to a point having Coordinates of X = 2,312,700.00 and Y = 500,400.00; thence South 18,000.00 feet to a point having Coordinates of X = 2,312,700.00 and Y = 482,400.00; thence West 18,000.00 feet to a point having Coordinates of X = 2,294,700.00 and Y = 482,400.00; thence North 18,000.00 feet to the point of beginning, containing approximately **173 acres**, as shown outlined on a plat on file in the Office of Mineral Resources, Department of Natural Resources, as provided by the applicant. All bearings, distances and coordinates are based on Louisiana Coordinate System of 1927 (South Zone).

NOTE: The above description of the tract nominated for lease has been provided exclusively by the party nominating the tract for lease. The Louisiana State Mineral Board makes no representation as to the accuracy of the description of the nominated tract or its suitability for lease. The Louisiana State Mineral Board has made no inspection of the nominated tract for the existence of conflicting leases, operating agreements, private claims or other existing or future obligations or conditions which may affect all or any portion of the nominated tract or its suitability for lease.

Maps depicting the nominated tract, containing the bearings, distances and coordinates of the nominated tract based on the Louisiana Coordinate System of 1927, North or South Zone, as applicable, are available for public inspection and review at the offices of the Louisiana State Mineral Board from 10:00 a.m. to 3:00 p.m. Monday - Friday.

In the event of conflict between the description of the nominated tract set forth above and the description of the nominated property as contained on the maps maintained at the offices of the Louisiana State Mineral Board, the Louisiana State Mineral Board maps shall prevail and shall provide the final property description of the lease to be awarded of the nominated tract.

Any mineral lease of the nominated tract by the Louisiana State Mineral Board shall be without warranty of any kind, either express, implied, or statutory, including, but not limited to, the implied warranties or merchantability and fitness for a particular purpose. Should the mineral lease of the nominated tract awarded by the Louisiana State Mineral Board be subsequently modified, cancelled or abrogated due to the existence of conflicting leases, operating agreements, private claims or other existing of future obligations or conditions which may affect all or any portion of the leased tract, it shall not relieve the Lessee of the obligation to pay any bonus due thereon to the Louisiana State Mineral Board, nor shall the Louisiana State Mineral Board be obligated to refund any consideration paid by the Lessee prior to such modification, cancellation, or abrogation, including, but not limited to, bonuses, rents and royalties.

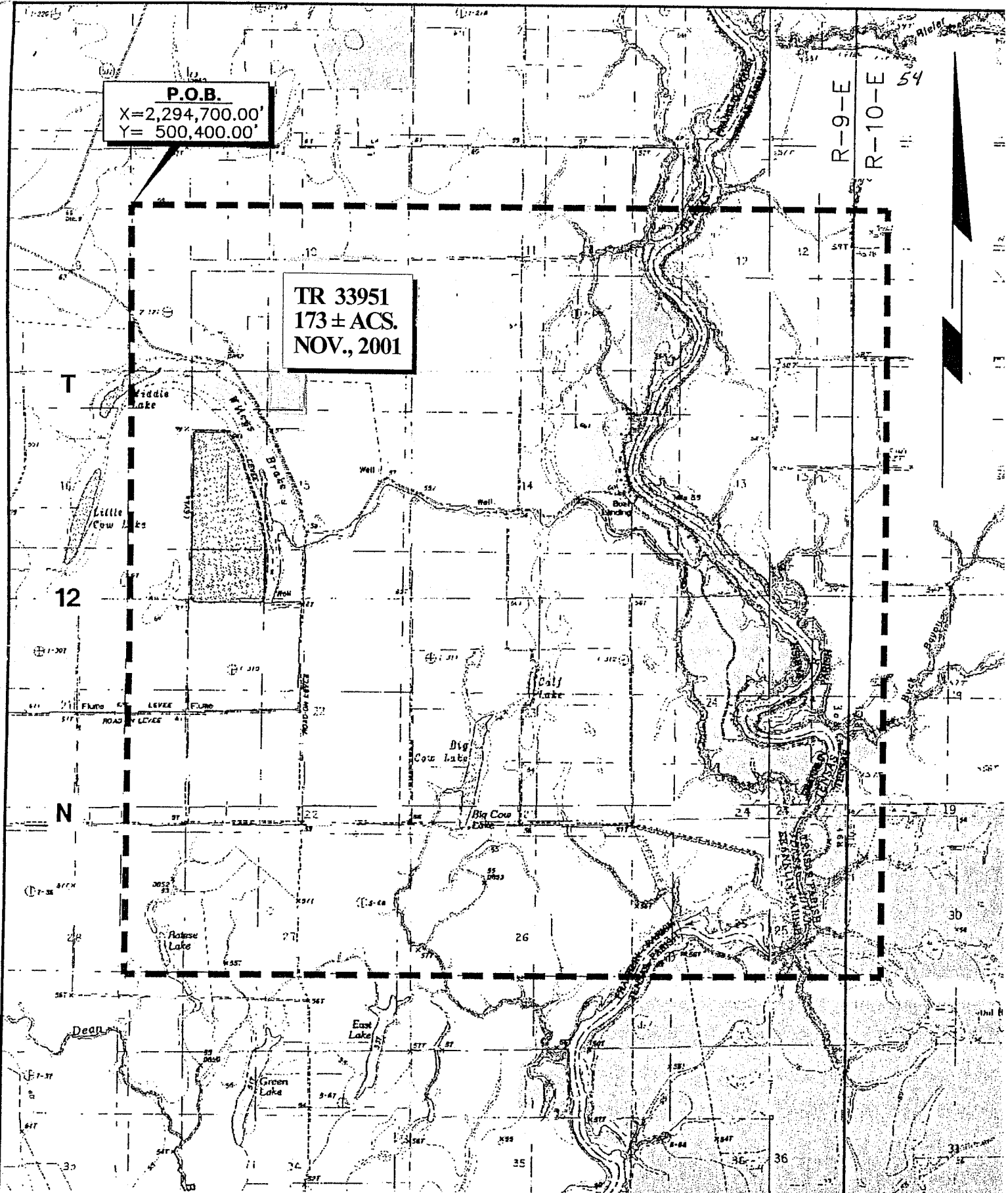
Applicant: G.M. McFly

Bidder	Cash Payment	Price / Acre	Rental	Oil	Gas	Other

**P.O.B.**  
X=2,294,700.00'  
Y= 500,400.00'

**TR 33951**  
173 ± ACS.  
NOV., 2001

R-9-E  
R-10-E  
54



**TRACT 33952 - Franklin and Tensas Parishes, Louisiana**

All of the lands now or formerly constituting the beds and bottoms of all water bodies of every nature and description and all islands and other lands formed by accretion or reliction, except tax lands, owned by and not under mineral lease from the State of Louisiana on November 14, 2001, situated in Franklin and Tensas Parishes, Louisiana, within the following described boundaries: Beginning at a point having Coordinates of X = 2,295,400.00 and Y = 482,400.00; thence East 13,200.00 feet to a point having Coordinates of X = 2,308,600.00 and Y = 482,400.00; thence South 18,000.00 feet to a point having Coordinates of X = 2,308,600.00 and Y = 464,400.00; thence West 13,200.00 feet to a point having Coordinates of X = 2,295,400.00 and Y = 464,400.00; thence North 18,000.00 feet to the point of beginning, containing approximately **215 acres**, as shown outlined on a plat on file in the Office of Mineral Resources, Department of Natural Resources, as provided by the applicant. All bearings, distances and coordinates are based on Louisiana Coordinate System of 1927 (South Zone).

NOTE: The above description of the tract nominated for lease has been provided exclusively by the party nominating the tract for lease. The Louisiana State Mineral Board makes no representation as to the accuracy of the description of the nominated tract or its suitability for lease. The Louisiana State Mineral Board has made no inspection of the nominated tract for the existence of conflicting leases, operating agreements, private claims or other existing or future obligations or conditions which may affect all or any portion of the nominated tract or its suitability for lease.

Maps depicting the nominated tract, containing the bearings, distances and coordinates of the nominated tract based on the Louisiana Coordinate System of 1927, North or South Zone, as applicable, are available for public inspection and review at the offices of the Louisiana State Mineral Board from 10:00 a.m. to 3:00 p.m. Monday - Friday.

In the event of conflict between the description of the nominated tract set forth above and the description of the nominated property as contained on the maps maintained at the offices of the Louisiana State Mineral Board, the Louisiana State Mineral Board maps shall prevail and shall provide the final property description of the lease to be awarded of the nominated tract.

Any mineral lease of the nominated tract by the Louisiana State Mineral Board shall be without warranty of any kind, either express, implied, or statutory, including, but not limited to, the implied warranties or merchantability and fitness for a particular purpose. Should the mineral lease of the nominated tract awarded by the Louisiana State Mineral Board be subsequently modified, cancelled or abrogated due to the existence of conflicting leases, operating agreements, private claims or other existing of future obligations or conditions which may affect all or any portion of the leased tract, it shall not relieve the Lessee of the obligation to pay any bonus due thereon to the Louisiana State Mineral Board, nor shall the Louisiana State Mineral Board be obligated to refund any consideration paid by the Lessee prior to such modification, cancellation, or abrogation, including, but not limited to, bonuses, rents and royalties.



Applicant: G.M. McFly

Bidder	Cash Payment	Price / Acre	Rental	Oil	Gas	Other