

TR 33983
299.13 ± ACS.
NOV., 2001

P.O.B.
X = 2,676,550.00
Y = 278,080.00

157

Blk. 50

Blk. 51

Blk. 52

BRETON SOUND AREA

MAIN PASS AREA, REVISED

S.L. 17110

S.L. 2726
(AS AMENDED)

S.L. 2726
(AS AMENDED)

S.L. 17052

S.L. 17053

Blk. 47

Blk. 46

S.L. 16848

S.L. 16847

S.L. 2726
(AS AMENDED)

45

S.L. 15906

NAD 1927 (South Zone)

Blk. 52

Blk. 53

Blk. 54

PLAT TO BE ATTACHED
TO LEASE PROPOSAL

PLAQUEMINES PARISH, LOUISIANA

SCALE : 1" = 3000'

TRACT 33984 - PORTION OF BLOCK 32, BRETON SOUND AREA, Plaquemines Parish, Louisiana

All of the lands now or formerly constituting the beds and bottoms of all water bodies of every nature and description and all islands and other lands formed by accretion or reliction, except tax lands, belonging to the State of Louisiana and not under mineral lease on November 14, 2001, situated in Plaquemines Parish, Louisiana, and more particularly described as follows: Beginning at a point having Coordinates of X = 2,635,350.00 and Y = 337,080.00, said point also being the Northwest corner of Block 32, Breton Sound Area; thence East 4,000.00 feet on and along the North line of said Block 32, Breton Sound Area, to a point having Coordinates of X = 2,639,350.00 and Y = 337,080.00, said point also being on a Western boundary of State of Louisiana - State Lease No. 1227, as amended; thence South 3,000.00 feet on and along said Western boundary of said State of Louisiana - State Lease No. 1227, as amended, to a point having Coordinates of X = 2,639,350.00 and Y = 334,080.00, said point also being on a Northern boundary of said State of Louisiana - State Lease No. 1227, as amended; thence West 4,000.00 feet on and along said Northern boundary of said State of Louisiana - State Lease No. 1227, as amended, to a point having Coordinates of X = 2,635,350.00 and Y = 334,080.00, said point also being on the West line of said Block 32, Breton Sound Area; thence North 3,000.00 feet on and along said West line of said Block 32, Breton Sound Area, to the point of beginning, containing approximately **275.48 acres**, as shown outlined on a plat on file in the Office of Mineral Resources, Department of Natural Resources, as provided by the applicant. All bearings, distances and coordinates are based on Louisiana Coordinate System of 1927 (South Zone).

NOTE: The above description of the tract nominated for lease has been provided exclusively by the party nominating the tract for lease. The Louisiana State Mineral Board makes no representation as to the accuracy of the description of the nominated tract or its suitability for lease. The Louisiana State Mineral Board has made no inspection of the nominated tract for the existence of conflicting leases, operating agreements, private claims or other existing or future obligations or conditions which may affect all or any portion of the nominated tract or its suitability for lease.

Maps depicting the nominated tract, containing the bearings, distances and coordinates of the nominated tract based on the Louisiana Coordinate System of 1927, North or South Zone, as applicable, are available for public inspection and review at the offices of the Louisiana State Mineral Board from 10:00 a.m. to 3:00 p.m. Monday - Friday.

In the event of conflict between the description of the nominated tract set forth above and the description of the nominated property as contained on the maps maintained at the offices of the Louisiana State Mineral Board, the Louisiana State Mineral Board maps shall prevail and shall provide the final property description of the lease to be awarded of the nominated tract.

Any mineral lease of the nominated tract by the Louisiana State Mineral Board shall be without warranty of any kind, either express, implied, or statutory, including, but not limited to, the implied warranties or merchantability and fitness for a particular purpose. Should the mineral lease of the nominated tract awarded by the

Louisiana State Mineral Board be subsequently modified, cancelled or abrogated due to the existence of conflicting leases, operating agreements, private claims or other existing or future obligations or conditions which may affect all or any portion of the leased tract, it shall not relieve the Lessee of the obligation to pay any bonus due thereon to the Louisiana State Mineral Board, nor shall the Louisiana State Mineral Board be obligated to refund any consideration paid by the Lessee prior to such modification, cancellation, or abrogation, including, but not limited to, bonuses, rents and royalties.

NOTE: The above tract is located in or near an oyster restricted area and all operations in such area must be conducted in strict conformity with the stipulations and/or regulations of the Louisiana Department of Wildlife and Fisheries.

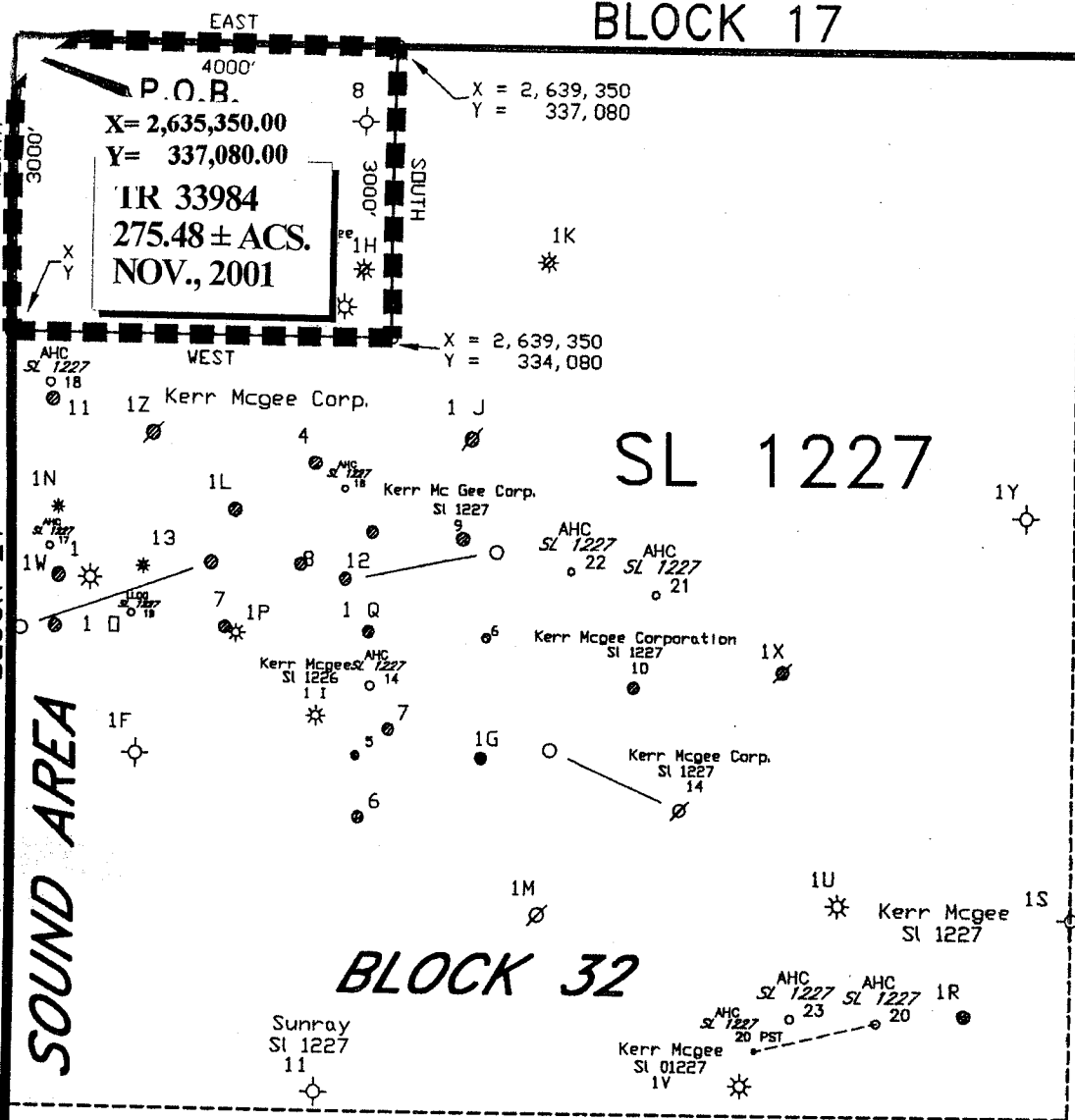
NOTE: The State of Louisiana does hereby reserve, and this lease shall be subject to, the imprescriptible right of surface use in the nature of a servitude in favor of the Department of Natural Resources, including its Offices and Commissions, for the sole purpose of implementing, constructing, servicing and maintaining approved coastal zone management and/or restoration projects. Utilization of any and all rights derived under this lease by the mineral lessee, its agents, successors or assigns, shall not interfere with nor hinder the reasonable surface use by the Department of Natural Resources, its Offices or Commissions, as hereinabove reserved.

Applicant: Robert A. Schroeder, Inc.

Bidder	Cash Payment	Price / Acre	Rental	Oil	Gas	Other

BLOCK 17

Kerr Mcgee
SI 1218



160

SL 1227

BLOCK 32

BRETON SOUND

SOUND AREA

**PLAT FOR
STATE LEASE NOMINATION**

LOCATED IN
BLOCK 32
BRETON SOUND AREA
PLAQUEMINES PARISH, LOUISIANA
SCALE 1" = 2000'



ALL COORDINATES, BEARINGS AND DISTANCES
ARE GRID, AND ARE ON THE LOUISIANA
LAMBERT PLANE COORDINATE SYSTEM,
SOUTH ZONE, 1927 NORTH AMERICAN
DATUM.

TRACT 33985 - PORTION OF BLOCK 1, BRETON SOUND AREA, St. Bernard Parish, Louisiana

All of the lands now or formerly constituting the beds and bottoms of all water bodies of every nature and description and all islands and other lands formed by accretion or reliction, except tax lands, belonging to the State of Louisiana and not under mineral lease on November 14, 2001, situated in St. Bernard Parish, Louisiana, and more particularly described as follows: Beginning at the Northwest corner of Block 1, Breton Sound Area, having Coordinates of X = 2,635,350.00 and Y = 381,330.00; thence East 1,636.00 feet along the North boundary of said Block 1, Breton Sound Area to a point having Coordinates of X = 2,636,986.00 and Y = 381,330.00; thence South 1,626.00 feet to a point having Coordinates of X = 2,636,986.00 and Y = 379,704.00; thence West 1,636.00 feet to a point on the West boundary of said Block 1, Breton Sound Area having Coordinates of X = 2,635,350.00 and Y = 379,704.00; thence North 1,626.00 feet along the said West boundary of Block 1, Breton Sound Area to the point of beginning, containing approximately **61.07 acres**, as shown outlined on a plat on file in the Office of Mineral Resources, Department of Natural Resources, as provided by the applicant. All bearings, distances and coordinates are based on Louisiana Coordinate System of 1927 (South Zone).

NOTE: The above description of the tract nominated for lease has been provided exclusively by the party nominating the tract for lease. The Louisiana State Mineral Board makes no representation as to the accuracy of the description of the nominated tract or its suitability for lease. The Louisiana State Mineral Board has made no inspection of the nominated tract for the existence of conflicting leases, operating agreements, private claims or other existing or future obligations or conditions which may affect all or any portion of the nominated tract or its suitability for lease.

Maps depicting the nominated tract, containing the bearings, distances and coordinates of the nominated tract based on the Louisiana Coordinate System of 1927, North or South Zone, as applicable, are available for public inspection and review at the offices of the Louisiana State Mineral Board from 10:00 a.m. to 3:00 p.m. Monday - Friday.

In the event of conflict between the description of the nominated tract set forth above and the description of the nominated property as contained on the maps maintained at the offices of the Louisiana State Mineral Board, the Louisiana State Mineral Board maps shall prevail and shall provide the final property description of the lease to be awarded of the nominated tract.

Any mineral lease of the nominated tract by the Louisiana State Mineral Board shall be without warranty of any kind, either express, implied, or statutory, including, but not limited to, the implied warranties or merchantability and fitness for a particular purpose. Should the mineral lease of the nominated tract awarded by the Louisiana State Mineral Board be subsequently modified, cancelled or abrogated due to the existence of conflicting leases, operating agreements, private claims or other existing of future obligations or conditions which may affect all or any portion of the leased tract, it shall not relieve the Lessee of the obligation to pay any bonus due thereon to the Louisiana State Mineral Board, nor shall the

Louisiana State Mineral Board be obligated to refund any consideration paid by the Lessee prior to such modification, cancellation, or abrogation, including, but not limited to, bonuses, rents and royalties.

NOTE: The above tract is located in or near an oyster restricted area and all operations in such area must be conducted in strict conformity with the stipulations and/or regulations of the Louisiana Department of Wildlife and Fisheries.

NOTE: The State of Louisiana does hereby reserve, and this lease shall be subject to, the imprescriptible right of surface use in the nature of a servitude in favor of the Department of Natural Resources, including its Offices and Commissions, for the sole purpose of implementing, constructing, servicing and maintaining approved coastal zone management and/or restoration projects. Utilization of any and all rights derived under this lease by the mineral lessee, its agents, successors or assigns, shall not interfere with nor hinder the reasonable surface use by the Department of Natural Resources, its Offices or Commissions, as hereinabove reserved.

Applicant: Energy Partners, Inc.

Bidder	Cash Payment	Price / Acre	Rental	Oil	Gas	Other

CHANDELEUR ¹⁶³
SOUND
AREA

BLOCK 69
CS 69

CHANDELEUR
SOUND
AREA

BLOCK 70
CS 70

S.L. 16799

P.O.B.
X= 2,635,350.00'
Y= 381,330.00'

S.L. 16010

S.L. 17003

S.L. 17005

S.L. 16011

TR 33985
61.07 ± ACS.
NOV., 2001

S.L. 16170

S.L. 16300

S.L. 16299

S.L. 16732

BRETON
SOUND
AREA

BLOCK 1
BS1

MAIN PASS
AREA

BLOCK 4
MP 4

GULF OF MEXICO



ST. BERNARD PARISH



TRACT 33986 - PORTION OF BLOCK 16, BRETON SOUND AREA, St. Bernard Parish, Louisiana

All of the lands now or formerly constituting the beds and bottoms of all water bodies of every nature and description and all islands and other lands formed by accretion or reliction, except tax lands, belonging to the State of Louisiana and not under mineral lease on November 14, 2001, situated in St. Bernard Parish, Louisiana, and more particularly described as follows: Beginning at a point having Coordinates of X = 2,635,350.00 and Y = 366,580.00, said point also being the Northwest corner of Block 16, Breton Sound Area; thence East 14,750.00 feet on and along the North line of said Block 16, Breton Sound Area, to a point having Coordinates of X = 2,650,100.00 and Y = 366,580.00, said point also being the Northeast corner of said Block 16, Breton Sound Area; thence South 7,375.00 feet on and along the East line of said Block 16, Breton Sound Area, to a point having Coordinates of X = 2,650,100.00 and Y = 359,205.00; thence West 14,750.00 feet to a point having Coordinates of X = 2,635,350.00 and Y = 359,205.00, said point also being on the West line of said Block 16, Breton Sound Area; thence North 7,375.00 feet on and along said West line of said Block 16, Breton Sound Area, to the point of beginning, containing approximately **2,497.27 acres**, as shown outlined on a plat on file in the Office of Mineral Resources, Department of Natural Resources, as provided by the applicant. All bearings, distances and coordinates are based on Louisiana Coordinate System of 1927 (South Zone).

NOTE: The above description of the tract nominated for lease has been provided exclusively by the party nominating the tract for lease. The Louisiana State Mineral Board makes no representation as to the accuracy of the description of the nominated tract or its suitability for lease. The Louisiana State Mineral Board has made no inspection of the nominated tract for the existence of conflicting leases, operating agreements, private claims or other existing or future obligations or conditions which may affect all or any portion of the nominated tract or its suitability for lease.

Maps depicting the nominated tract, containing the bearings, distances and coordinates of the nominated tract based on the Louisiana Coordinate System of 1927, North or South Zone, as applicable, are available for public inspection and review at the offices of the Louisiana State Mineral Board from 10:00 a.m. to 3:00 p.m. Monday - Friday.

In the event of conflict between the description of the nominated tract set forth above and the description of the nominated property as contained on the maps maintained at the offices of the Louisiana State Mineral Board, the Louisiana State Mineral Board maps shall prevail and shall provide the final property description of the lease to be awarded of the nominated tract.

Any mineral lease of the nominated tract by the Louisiana State Mineral Board shall be without warranty of any kind, either express, implied, or statutory, including, but not limited to, the implied warranties or merchantability and fitness for a particular purpose. Should the mineral lease of the nominated tract awarded by the Louisiana State Mineral Board be subsequently modified, cancelled or abrogated due to the existence of conflicting leases, operating agreements, private claims or other existing of future obligations