

TRACT 33974 - PORTION OF BLOCK 50, BRETON SOUND AREA, Plaquemines Parish, Louisiana

All of the lands now or formerly constituting the beds and bottoms of all water bodies of every nature and description and all islands and other lands formed by accretion or reliction, except tax lands, belonging to the State of Louisiana and not under mineral lease on November 14, 2001, situated in Plaquemines Parish, Louisiana, and more particularly described as follows: Beginning at the Southeast corner of Block 50, Breton Sound Area, having Coordinates of X = 2,664,850.00 and Y = 278,080.00; thence West - 10,500.00 feet along the South line of said Block 50, Breton Sound Area, to the Southeast corner of State Lease No. 16393 having Coordinates of X = 2,654,350.00 and Y = 278,080.00; thence North - 2,000.00 feet along the East line of said State Lease No. 16393 to its Northeast corner having Coordinates of X = 2,654,350.00 and Y = 280,080.00; thence West - 3,800.00 feet along the North line of said State Lease No. 13693 to its Northwest corner having Coordinates of X = 2,650,550.00 and Y = 280,080.00; thence South - 2,000.00 feet along the West line of said State Lease No. 16393 to its Southwest corner, said corner also being a point on the South line of said Block 50, Breton Sound Area, having Coordinates of X = 2,650,550.00 and Y = 278,080.00; thence West - 450.00 feet along the South line of said Block 50, Breton Sound Area, to its Southwest corner having Coordinates of X = 2,650,100.00 and Y = 278,080.00; thence North - 7,375.00 feet along the West line of said Block 50, Breton Sound Area, to a point having Coordinates of X = 2,650,100.00 and Y = 285,455.00; thence East - 14,750.00 feet to a point on the East line of said Block 50, Breton Sound Area, having Coordinates of X = 2,664,850.00 and Y = 285,455.00; thence South - 7,375.00 feet along the East line of said Block 50, Breton Sound Area, to the point of beginning, containing approximately **2,322.80 acres**, as shown outlined on a plat on file in the Office of Mineral Resources, Department of Natural Resources, as provided by the applicant. All bearings, distances and coordinates are based on Louisiana Coordinate System of 1927 (South Zone).

NOTE: The above description of the tract nominated for lease has been provided exclusively by the party nominating the tract for lease. The Louisiana State Mineral Board makes no representation as to the accuracy of the description of the nominated tract or its suitability for lease. The Louisiana State Mineral Board has made no inspection of the nominated tract for the existence of conflicting leases, operating agreements, private claims or other existing or future obligations or conditions which may affect all or any portion of the nominated tract or its suitability for lease.

Maps depicting the nominated tract, containing the bearings, distances and coordinates of the nominated tract based on the Louisiana Coordinate System of 1927, North or South Zone, as applicable, are available for public inspection and review at the offices of the Louisiana State Mineral Board from 10:00 a.m. to 3:00 p.m. Monday - Friday.

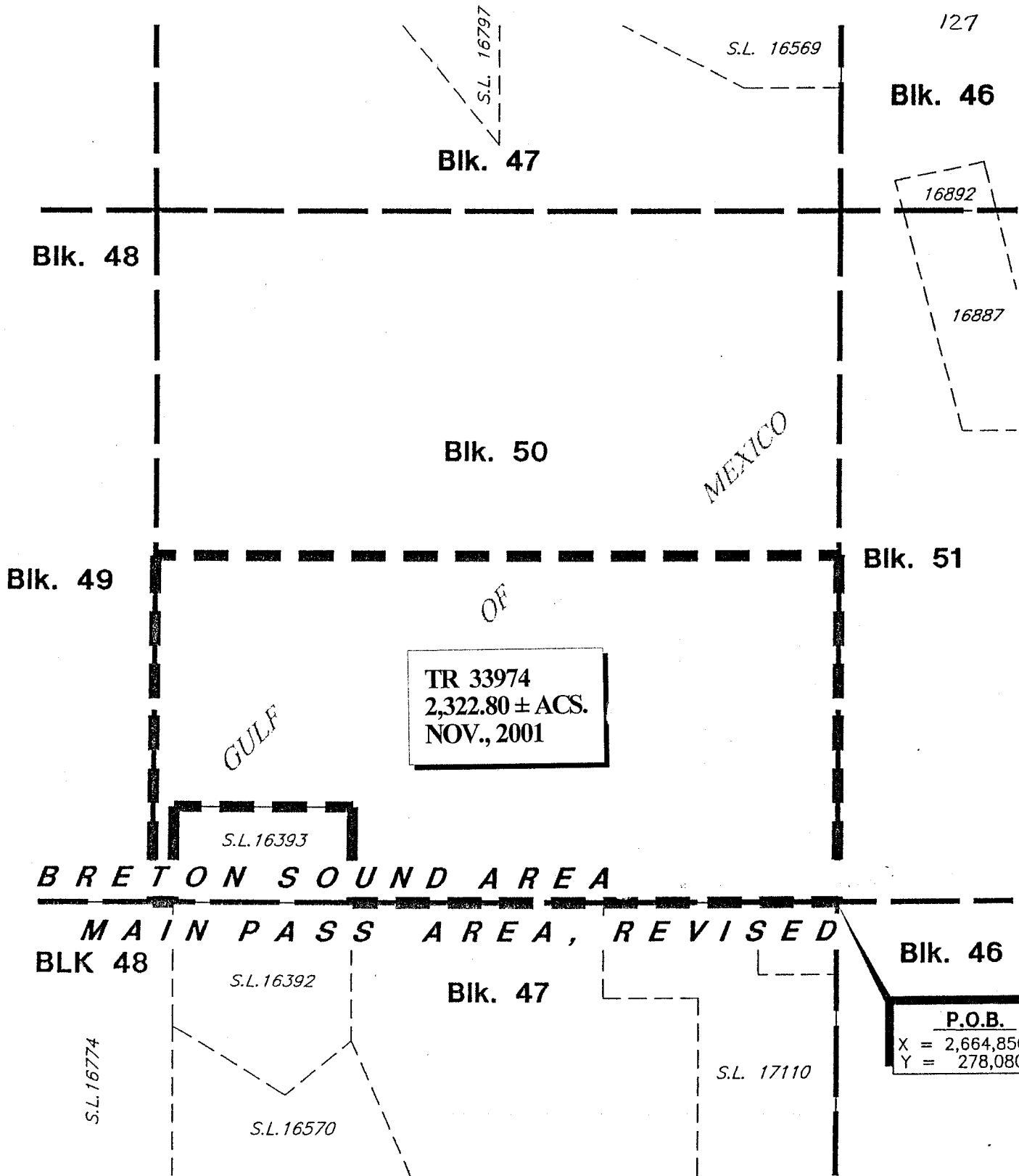
In the event of conflict between the description of the nominated tract set forth above and the description of the nominated property as contained on the maps maintained at the offices of the Louisiana State Mineral Board, the Louisiana State Mineral Board maps shall prevail and shall provide the final property description of the lease to be awarded of the nominated tract.

Any mineral lease of the nominated tract by the Louisiana State Mineral Board shall be without warranty of any kind, either express, implied, or statutory, including, but not limited to, the implied warranties or merchantability and fitness for a particular purpose. Should the mineral lease of the nominated tract awarded by the Louisiana State Mineral Board be subsequently modified, cancelled or abrogated due to the existence of conflicting leases, operating agreements, private claims or other existing or future obligations or conditions which may affect all or any portion of the leased tract, it shall not relieve the Lessee of the obligation to pay any bonus due thereon to the Louisiana State Mineral Board, nor shall the Louisiana State Mineral Board be obligated to refund any consideration paid by the Lessee prior to such modification, cancellation, or abrogation, including, but not limited to, bonuses, rents and royalties.

NOTE: The State of Louisiana does hereby reserve, and this lease shall be subject to, the imprescriptible right of surface use in the nature of a servitude in favor of the Department of Natural Resources, including its Offices and Commissions, for the sole purpose of implementing, constructing, servicing and maintaining approved coastal zone management and/or restoration projects. Utilization of any and all rights derived under this lease by the mineral lessee, its agents, successors or assigns, shall not interfere with nor hinder the reasonable surface use by the Department of Natural Resources, its Offices or Commissions, as hereinabove reserved.

Applicant: Clark W. Rider and Associates, Inc.

Bidder	Cash Payment	Price / Acre	Rental	Oil	Gas	Other



TR 33974
 2,322.80 ± ACS.
 NOV., 2001

P.O.B.
 X = 2,664,850.00
 Y = 278,080.00

BRETON SOUND AREA
MAIN PASS AREA, REVISED

**PLAT TO BE ATTACHED
 TO LEASE PROPOSAL**

PLAQUEMINES PARISH, LOUISIANA

SCALE : 1" = 3000'

TRACT 33975 - PORTION OF BLOCK 47, BRETON SOUND AREA, Plaquemines Parish, Louisiana

All of the lands now or formerly constituting the beds and bottoms of all water bodies of every nature and description and all islands and other lands formed by accretion or reliction, except tax lands, belonging to the State of Louisiana and not under mineral lease on November 14, 2001, situated in Plaquemines Parish, Louisiana, and more particularly described as follows: Beginning at the Northeast corner of Block 47, Breton Sound Area, having Coordinates of X = 2,664,850.00 and Y = 307,580.00; thence South 8,300.00 feet along the East line of said Block 47, Breton Sound Area, to the Northeast corner of State Lease No. 16569 having Coordinates of X = 2,664,850.00 and Y = 299,280.00; thence North 75 degrees 24 minutes 12 seconds West 4,960.09 feet along the Northern boundary of said State Lease No. 16569 to a corner having Coordinates of X = 2,660,050.00 and Y = 300,530.00; thence West 2,575.00 feet along the Northern boundary of said State Lease No. 16569 to its Northwest corner having Coordinates of X = 2,657,475.00 and Y = 300,530.00; thence North 7,050.00 feet to a point on the North line of said Block 47, Breton Sound Area, having Coordinates of X = 2,657,475.00 and Y = 307,580.00; thence East 7,375.00 feet to the point of beginning, containing approximately **1,262.48 acres**, as shown outlined on a plat on file in the Office of Mineral Resources, Department of Natural Resources, as provided by the applicant. All bearings, distances and coordinates are based on Louisiana Coordinate System of 1927 (South Zone).

NOTE: The above description of the tract nominated for lease has been provided exclusively by the party nominating the tract for lease. The Louisiana State Mineral Board makes no representation as to the accuracy of the description of the nominated tract or its suitability for lease. The Louisiana State Mineral Board has made no inspection of the nominated tract for the existence of conflicting leases, operating agreements, private claims or other existing or future obligations or conditions which may affect all or any portion of the nominated tract or its suitability for lease.

Maps depicting the nominated tract, containing the bearings, distances and coordinates of the nominated tract based on the Louisiana Coordinate System of 1927, North or South Zone, as applicable, are available for public inspection and review at the offices of the Louisiana State Mineral Board from 10:00 a.m. to 3:00 p.m. Monday - Friday.

In the event of conflict between the description of the nominated tract set forth above and the description of the nominated property as contained on the maps maintained at the offices of the Louisiana State Mineral Board, the Louisiana State Mineral Board maps shall prevail and shall provide the final property description of the lease to be awarded of the nominated tract.

Any mineral lease of the nominated tract by the Louisiana State Mineral Board shall be without warranty of any kind, either express, implied, or statutory, including, but not limited to, the implied warranties or merchantability and fitness for a particular purpose. Should the mineral lease of the nominated tract awarded by the Louisiana State Mineral Board be subsequently modified, cancelled or abrogated due to the existence of conflicting leases, operating agreements, private claims or other existing of future obligations

or conditions which may affect all or any portion of the leased tract, it shall not relieve the Lessee of the obligation to pay any bonus due thereon to the Louisiana State Mineral Board, nor shall the Louisiana State Mineral Board be obligated to refund any consideration paid by the Lessee prior to such modification, cancellation, or abrogation, including, but not limited to, bonuses, rents and royalties.

NOTE: The State of Louisiana does hereby reserve, and this lease shall be subject to, the imprescriptible right of surface use in the nature of a servitude in favor of the Department of Natural Resources, including its Offices and Commissions, for the sole purpose of implementing, constructing, servicing and maintaining approved coastal zone management and/or restoration projects. Utilization of any and all rights derived under this lease by the mineral lessee, its agents, successors or assigns, shall not interfere with nor hinder the reasonable surface use by the Department of Natural Resources, its Offices or Commissions, as hereinabove reserved.

Applicant: Clark W. Rider and Associates, Inc.

Bidder	Cash Payment	Price / Acre	Rental	Oil	Gas	Other

BRETON SOUND AREA

130

P.O.B.
X = 2,664,850.00
Y = 307,580.00

33

Blk. 34

S.L. 15129

S.L. 14560

Blk. 35

S.L. 16796

MEXICO

TR 33975
1,262.48 ± ACS.
NOV., 2001

NAD 1927 (South Zone)

Blk. 47

48

Blk. 46

S.L. 16797

S.L. 16569

49

GULF

Blk. 50

Blk. 51

16892

16887

PLAT TO BE ATTACHED
TO LEASE PROPOSAL

PLAQUEMINES PARISH, LOUISIANA

SCALE : 1" = 3000'

TRACT 33976 - PORTION OF BLOCK 47, BRETON SOUND AREA, Plaquemines Parish, Louisiana

All of the lands now or formerly constituting the beds and bottoms of all water bodies of every nature and description and all islands and other lands formed by accretion or reliction, except tax lands, belonging to the State of Louisiana and not under mineral lease on November 14, 2001, situated in Plaquemines Parish, Louisiana, and more particularly described as follows: Beginning at the Southeast corner of Block 47, Breton Sound Area, having Coordinates of X = 2,664,850.00 and Y = 292,830.00; thence West 7,375.00 feet along the South line of said Block 47, Breton Sound Area, to a point having Coordinates of X = 2,657,475.00 and Y = 292,830.00; thence North 1,415.00 feet to the Southern corner of State Lease No. 16797 having Coordinates of X = 2,657,475.00 and Y = 294,245.00; thence North 3,835.00 feet along the East line of said State Lease No. 16797 to the most Westerly Southwest corner of State Lease No. 16569 having Coordinates of X = 2,657,475.00 and Y = 298,080.00; thence South 63 degrees 19 minutes 35 seconds East 5,903.23 feet along the Southern boundary of said State Lease No. 16569 to a corner having Coordinates of X = 2,662,750.00 and Y = 295,430.00; thence East 2,100.00 feet along the Southern boundary of said State Lease No. 16569 to its Southeast corner, said corner also being a point on the East line of said Block 47, Breton Sound Area, having Coordinates of X = 2,664,850.00 and Y = 295,430.00; thence South 2,600.00 feet along the East line of said Block 47, Breton Sound Area, to the point of beginning, containing approximately **600.65 acres**, as shown outlined on a plat on file in the Office of Mineral Resources, Department of Natural Resources, as provided by the applicant. All bearings, distances and coordinates are based on Louisiana Coordinate System of 1927 (South Zone).

NOTE: The above description of the tract nominated for lease has been provided exclusively by the party nominating the tract for lease. The Louisiana State Mineral Board makes no representation as to the accuracy of the description of the nominated tract or its suitability for lease. The Louisiana State Mineral Board has made no inspection of the nominated tract for the existence of conflicting leases, operating agreements, private claims or other existing or future obligations or conditions which may affect all or any portion of the nominated tract or its suitability for lease.

Maps depicting the nominated tract, containing the bearings, distances and coordinates of the nominated tract based on the Louisiana Coordinate System of 1927, North or South Zone, as applicable, are available for public inspection and review at the offices of the Louisiana State Mineral Board from 10:00 a.m. to 3:00 p.m. Monday - Friday.

In the event of conflict between the description of the nominated tract set forth above and the description of the nominated property as contained on the maps maintained at the offices of the Louisiana State Mineral Board, the Louisiana State Mineral Board maps shall prevail and shall provide the final property description of the lease to be awarded of the nominated tract.

Any mineral lease of the nominated tract by the Louisiana State Mineral Board shall be without warranty of any kind, either express, implied, or statutory, including, but not limited to, the implied warranties or merchantability and fitness for a particular purpose.

Should the mineral lease of the nominated tract awarded by the Louisiana State Mineral Board be subsequently modified, cancelled or abrogated due to the existence of conflicting leases, operating agreements, private claims or other existing or future obligations or conditions which may affect all or any portion of the leased tract, it shall not relieve the Lessee of the obligation to pay any bonus due thereon to the Louisiana State Mineral Board, nor shall the Louisiana State Mineral Board be obligated to refund any consideration paid by the Lessee prior to such modification, cancellation, or abrogation, including, but not limited to, bonuses, rents and royalties.

NOTE: The State of Louisiana does hereby reserve, and this lease shall be subject to, the imprescriptible right of surface use in the nature of a servitude in favor of the Department of Natural Resources, including its Offices and Commissions, for the sole purpose of implementing, constructing, servicing and maintaining approved coastal zone management and/or restoration projects. Utilization of any and all rights derived under this lease by the mineral lessee, its agents, successors or assigns, shall not interfere with nor hinder the reasonable surface use by the Department of Natural Resources, its Offices or Commissions, as hereinabove reserved.

Applicant: Clark W. Rider and Associates, Inc.

Bidder	Cash Payment	Price / Acre	Rental	Oil	Gas	Other