

INLAND

TRACTS

TRACT 33947 - Caldwell Parish, Louisiana

All of the lands, now or formerly constituting the beds and bottoms of all water bodies of every nature and description and all islands and other lands formed by accretion or reliction, except tax lands, owned by and not under mineral lease from the State of Louisiana on November 14, 2001, situated in Caldwell Parish, Louisiana, within the following described boundaries: Beginning at a point having Coordinates of X = 2,110,970 and Y = 553,980; thence North 15,950 feet to a point having Coordinates of X = 2,111,160 and Y = 569,930; thence East 10,740 feet to a point having Coordinates of X = 2,121,900 and Y = 570,000; thence South 15,950 feet to a point having Coordinates of X = 2,121,630 and Y = 554,050; thence West 10,660 feet to the point of beginning, containing approximately 366 acres, as shown outlined on a plat on file in the Office of Mineral Resources, Department of Natural Resources, as provided by the applicant. All bearings, distances and coordinates are based on Louisiana Coordinate System of 1927 (North Zone).

NOTE: The above description of the tract nominated for lease has been provided exclusively by the party nominating the tract for lease. The Louisiana State Mineral Board makes no representation as to the accuracy of the description of the nominated tract or its suitability for lease. The Louisiana State Mineral Board has made no inspection of the nominated tract for the existence of conflicting leases, operating agreements, private claims or other existing or future obligations or conditions which may affect all or any portion of the nominated tract or its suitability for lease.

Maps depicting the nominated tract, containing the bearings, distances and coordinates of the nominated tract based on the Louisiana Coordinate System of 1927, North or South Zone, as applicable, are available for public inspection and review at the offices of the Louisiana State Mineral Board from 10:00 a.m. to 3:00 p.m. Monday - Friday.

In the event of conflict between the description of the nominated tract set forth above and the description of the nominated property as contained on the maps maintained at the offices of the Louisiana State Mineral Board, the Louisiana State Mineral Board maps shall prevail and shall provide the final property description of the lease to be awarded of the nominated tract.

Any mineral lease of the nominated tract by the Louisiana State Mineral Board shall be without warranty of any kind, either express, implied, or statutory, including, but not limited to, the implied warranties or merchantability and fitness for a particular purpose. Should the mineral lease of the nominated tract awarded by the Louisiana State Mineral Board be subsequently modified, cancelled or abrogated due to the existence of conflicting leases, operating agreements, private claims or other existing of future obligations or conditions which may affect all or any portion of the leased tract, it shall not relieve the Lessee of the obligation to pay any bonus due thereon to the Louisiana State Mineral Board, nor shall the Louisiana State Mineral Board be obligated to refund any consideration paid by the Lessee prior to such modification, cancellation, or abrogation, including, but not limited to, bonuses, rents and royalties.

Applicant: Mark V Petroleum Company

Bidder	Cash Payment	Price / Acre	Rental	Oil	Gas	Other

Blankston

CALDWELL PARISH, LOUISIANA

T14N - R3E: Sections 1, 2, 11, 12, 13, 14, 37, 38, 39, 40, 41, 42, 43 & 47

366 acres

OUACHITA RIVER

OUACHITA RIVER

OUACHITA RIVER

TR 33947
366 ± ACS.
NOV., 2001

Ferrand Lake

Corey

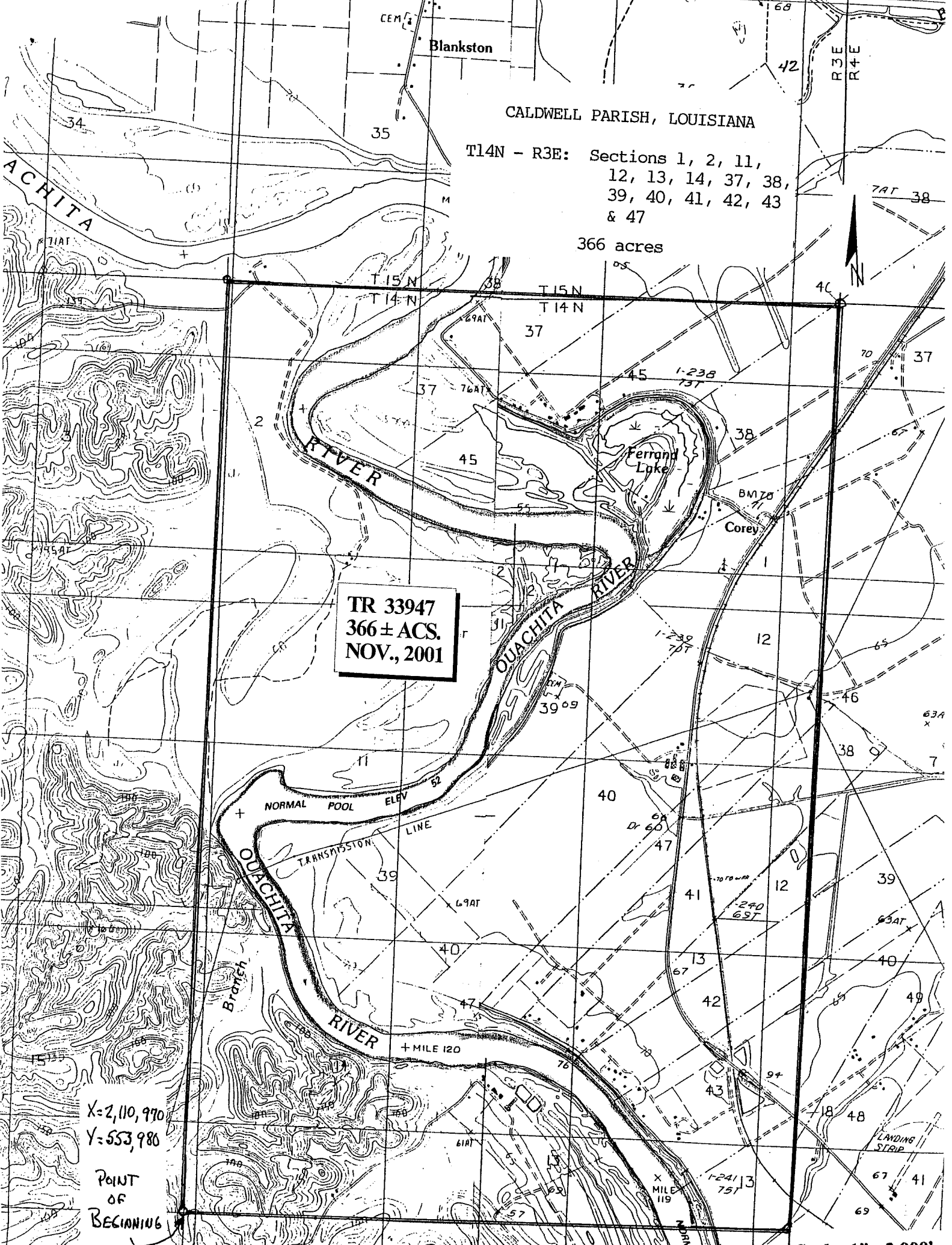
NORMAL POOL

TRANSMISSION LINE

MILE 120

X=2,110,970
Y=553,980

POINT OF BEGINNING



TRACT 33948 - Caldwell Parish, Louisiana

All of the lands now or formerly constituting the beds and bottoms of all water bodies of every nature and description and all islands and other lands formed by accretion or reliction, except tax lands, owned by and not under mineral lease from the State of Louisiana on November 14, 2001, situated in Caldwell Parish, Louisiana, within the following described boundaries: Beginning at a point having Coordinates of X = 2,116,180 and Y = 538,200; thence North 15,780 feet to a point having Coordinates of X = 2,116,140 and Y = 553,980; thence East 11,010 feet to a point having Coordinates of X = 2,127,150 and Y = 554,050; thence South 15,730 feet to a point having Coordinates of X = 2,127,180 and Y = 538,220; thence West 11,000 feet to the point of beginning, containing approximately 304 acres, as shown outlined on a plat on file in the Office of Mineral Resources, Department of Natural Resources, as provided by the applicant. All bearings, distances and coordinates are based on Louisiana Coordinate System of 1927 (North Zone).

NOTE: The above description of the tract nominated for lease has been provided exclusively by the party nominating the tract for lease. The Louisiana State Mineral Board makes no representation as to the accuracy of the description of the nominated tract or its suitability for lease. The Louisiana State Mineral Board has made no inspection of the nominated tract for the existence of conflicting leases, operating agreements, private claims or other existing or future obligations or conditions which may affect all or any portion of the nominated tract or its suitability for lease.

Maps depicting the nominated tract, containing the bearings, distances and coordinates of the nominated tract based on the Louisiana Coordinate System of 1927, North or South Zone, as applicable, are available for public inspection and review at the offices of the Louisiana State Mineral Board from 10:00 a.m. to 3:00 p.m. Monday - Friday.

In the event of conflict between the description of the nominated tract set forth above and the description of the nominated property as contained on the maps maintained at the offices of the Louisiana State Mineral Board, the Louisiana State Mineral Board maps shall prevail and shall provide the final property description of the lease to be awarded of the nominated tract.

Any mineral lease of the nominated tract by the Louisiana State Mineral Board shall be without warranty of any kind, either express, implied, or statutory, including, but not limited to, the implied warranties or merchantability and fitness for a particular purpose. Should the mineral lease of the nominated tract awarded by the Louisiana State Mineral Board be subsequently modified, cancelled or abrogated due to the existence of conflicting leases, operating agreements, private claims or other existing of future obligations or conditions which may affect all or any portion of the leased tract, it shall not relieve the Lessee of the obligation to pay any bonus due thereon to the Louisiana State Mineral Board, nor shall the Louisiana State Mineral Board be obligated to refund any consideration paid by the Lessee prior to such modification, cancellation, or abrogation, including, but not limited to, bonuses, rents and royalties.

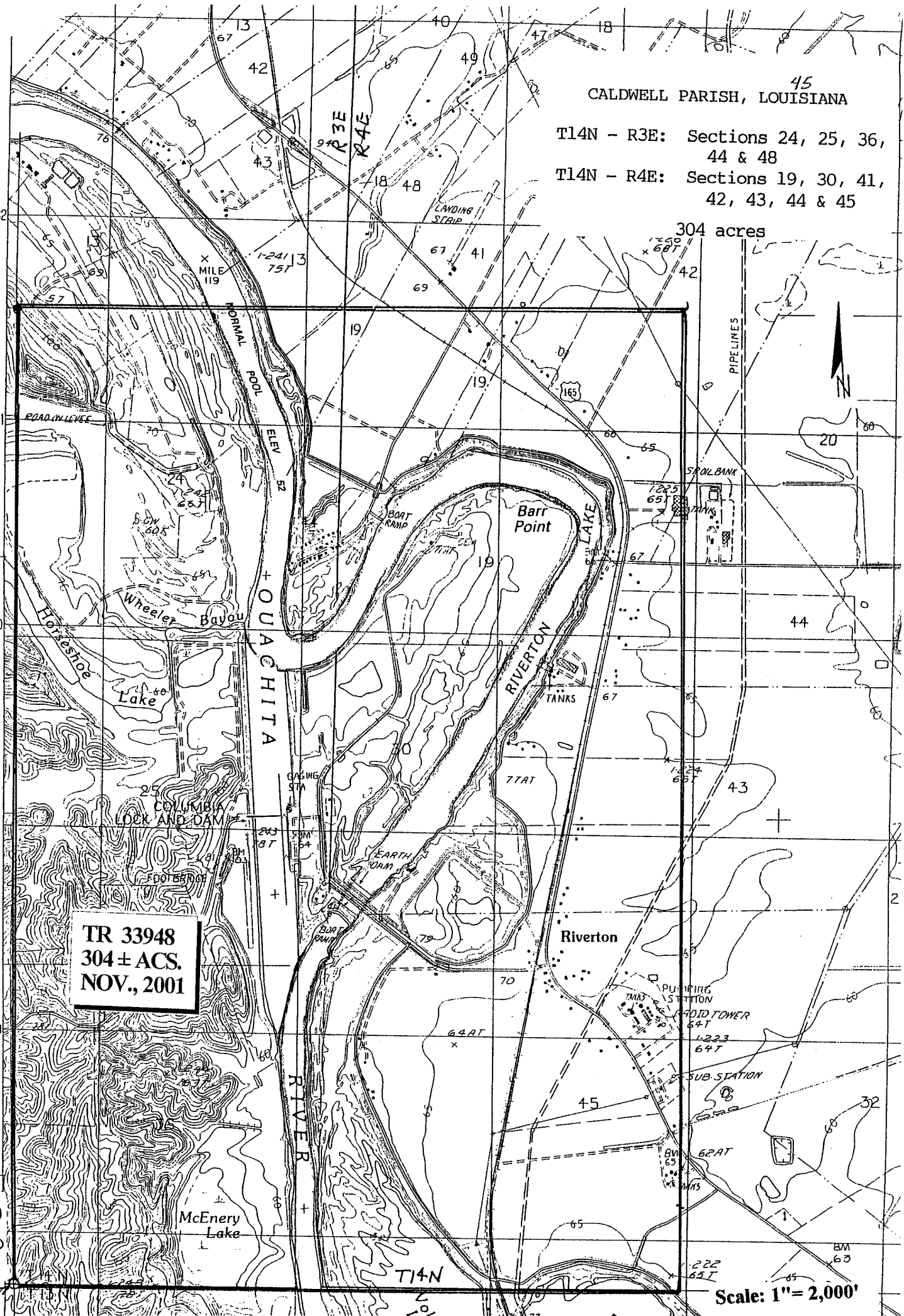
Applicant: Mark V Petroleum Company

Bidder	Cash Payment	Price / Acre	Rental	Oil	Gas	Other

45
CALDWELL PARISH, LOUISIANA

T14N - R3E: Sections 24, 25, 36,
44 & 48
T14N - R4E: Sections 19, 30, 41,
42, 43, 44 & 45

304 acres



TR 33948
304 ± ACS.
NOV., 2001

540000
FEET
X = 2,116,180
Y = 538,200

POINT OF
RECORDING

Scale: 1" = 2,000'

TRACT 33949 - Caldwell Parish, Louisiana

All of the lands now or formerly constituting the beds and bottoms of all water bodies of every nature and description and all islands and other lands formed by accretion or reliction, except tax lands, owned by and not under mineral lease from the State of Louisiana on November 14, 2001, situated in Caldwell Parish, Louisiana, within the following described boundaries: Beginning at a point having Coordinates of X = 2,116,180 and Y = 538,200; thence South 12,300 feet to a point having Coordinates of X = 2,116,400 and Y = 525,900; thence East 18,450 feet to a point having Coordinates of X = 2,134,850 and Y = 526,000; thence North 12,180 feet to a point having Coordinates of X = 2,134,660 and Y = 538,180; thence West 18,480 feet to the point of beginning, containing approximately 310 acres, as shown outlined on a plat on file in the Office of Mineral Resources, Department of Natural Resources, as provided by the applicant. All bearings, distances and coordinates are based on Louisiana Coordinate System of 1927 (North Zone).

NOTE: The above description of the tract nominated for lease has been provided exclusively by the party nominating the tract for lease. The Louisiana State Mineral Board makes no representation as to the accuracy of the description of the nominated tract or its suitability for lease. The Louisiana State Mineral Board has made no inspection of the nominated tract for the existence of conflicting leases, operating agreements, private claims or other existing or future obligations or conditions which may affect all or any portion of the nominated tract or its suitability for lease.

Maps depicting the nominated tract, containing the bearings, distances and coordinates of the nominated tract based on the Louisiana Coordinate System of 1927, North or South Zone, as applicable, are available for public inspection and review at the offices of the Louisiana State Mineral Board from 10:00 a.m. to 3:00 p.m. Monday - Friday.

In the event of conflict between the description of the nominated tract set forth above and the description of the nominated property as contained on the maps maintained at the offices of the Louisiana State Mineral Board, the Louisiana State Mineral Board maps shall prevail and shall provide the final property description of the lease to be awarded of the nominated tract.

Any mineral lease of the nominated tract by the Louisiana State Mineral Board shall be without warranty of any kind, either express, implied, or statutory, including, but not limited to, the implied warranties or merchantability and fitness for a particular purpose. Should the mineral lease of the nominated tract awarded by the Louisiana State Mineral Board be subsequently modified, cancelled or abrogated due to the existence of conflicting leases, operating agreements, private claims or other existing of future obligations or conditions which may affect all or any portion of the leased tract, it shall not relieve the Lessee of the obligation to pay any bonus due thereon to the Louisiana State Mineral Board, nor shall the Louisiana State Mineral Board be obligated to refund any consideration paid by the Lessee prior to such modification, cancellation, or abrogation, including, but not limited to, bonuses, rents and royalties.

Applicant: Mark V Petroleum Company

Bidder	Cash Payment	Price / Acre	Rental	Oil	Gas	Other