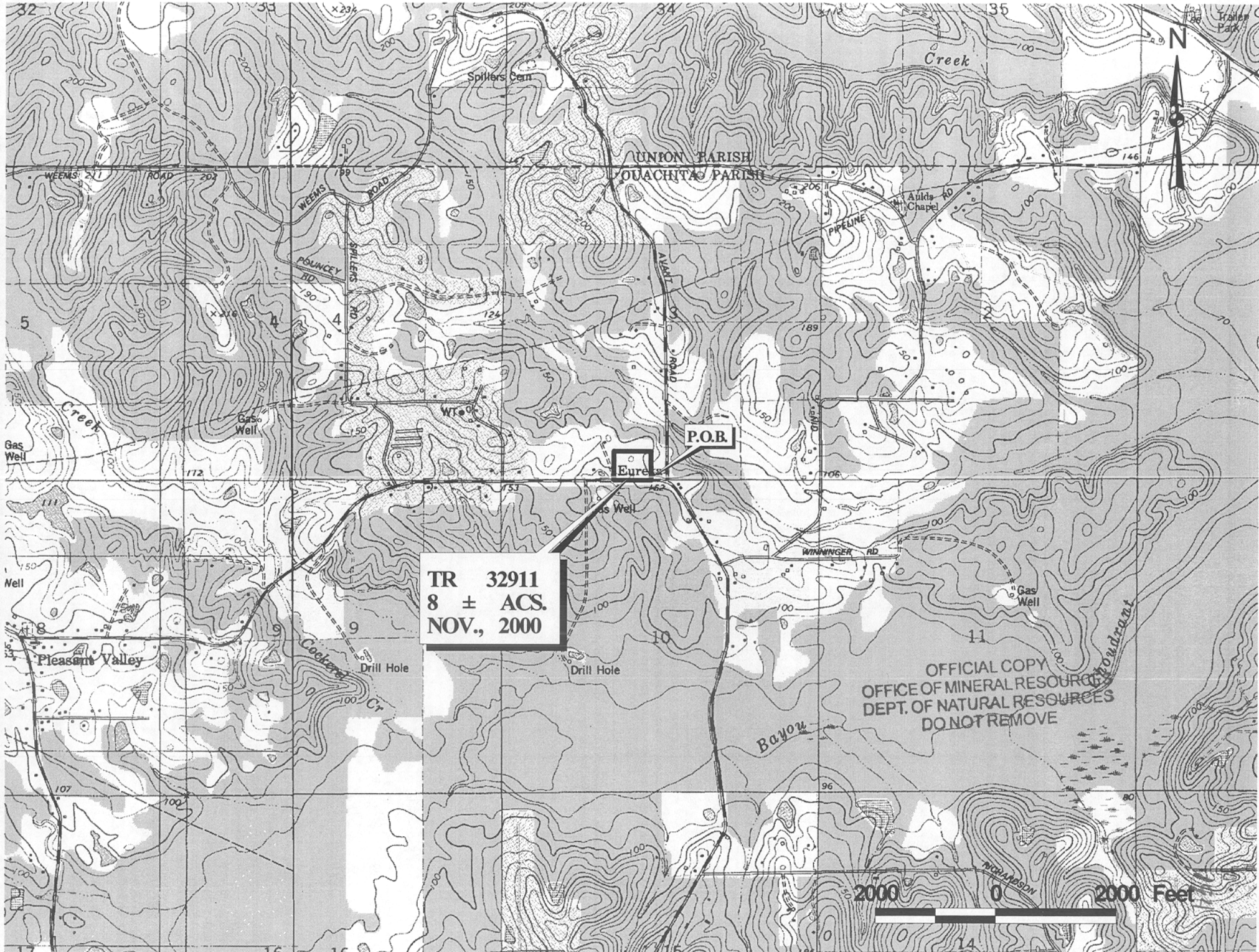


TRACT 32911 - STATE AGENCY - Ouachita Parish, Louisiana

A certain tract of land belonging to and not under mineral lease from the Ouachita Parish School Board, on November 8, 2000, being more fully described as follows: The Southeast Quarter of the Southwest Quarter of Section 3, Township 18 North, Range 1 East, Ouachita Parish, Louisiana, more particularly described as follows: Beginning at a point on the South line of the above described forty acres of land two hundred twenty-five feet (225') West of the Southeast corner of said forty; thence running back in a Northerly direction at right angles to said South line of said forty, and parallel to the East line of said forty a distance of 553 feet; thence running in a Westerly direction in a line parallel to the South line of said forty a distance of 630 feet to an iron pin; thence running in a Southerly direction perpendicular to the South line of said forty a distance of 553 feet; thence running in an Easterly direction along the South line of said forty, a distance of 630 feet to the point of beginning, excluding beds and bottoms of all navigable waters, containing approximately **8 acres**, as shown outlined in red on a plat on file in the Office of Mineral Resources, Department of Natural Resources. All bearings, distances and coordinates are based on Louisiana Coordinate System of 1927 (South Zone).

Applicant: Broyles Oil & Gas, Inc. to Agency and by Resolution from the Ouachita Parish School Board authorizing the Mineral Board to act in its behalf.

Bidder	Cash Payment	Price / Acre	Rental	Oil	Gas	Other



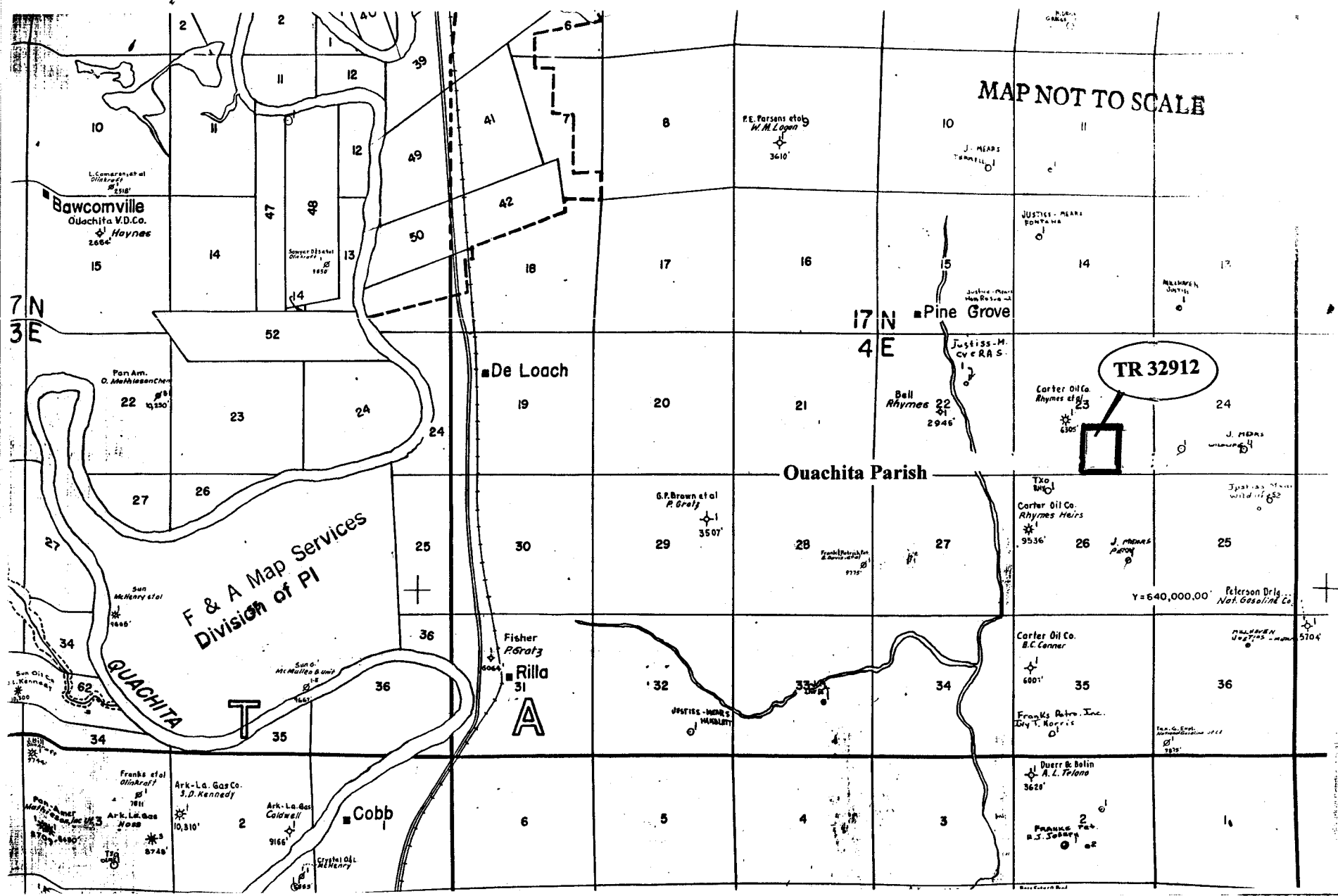
TR 32911
8 ± ACS.
NOV., 2000

OFFICIAL COPY
OFFICE OF MINERAL RESOURCES
DEPT. OF NATURAL RESOURCES
DO NOT REMOVE

2000 0 2000 Feet

NOT TO BE USED WITH A PORTION BID
FOR INFORMATIONAL PURPOSES ONLY!

MAP NOT TO SCALE



TR 32912

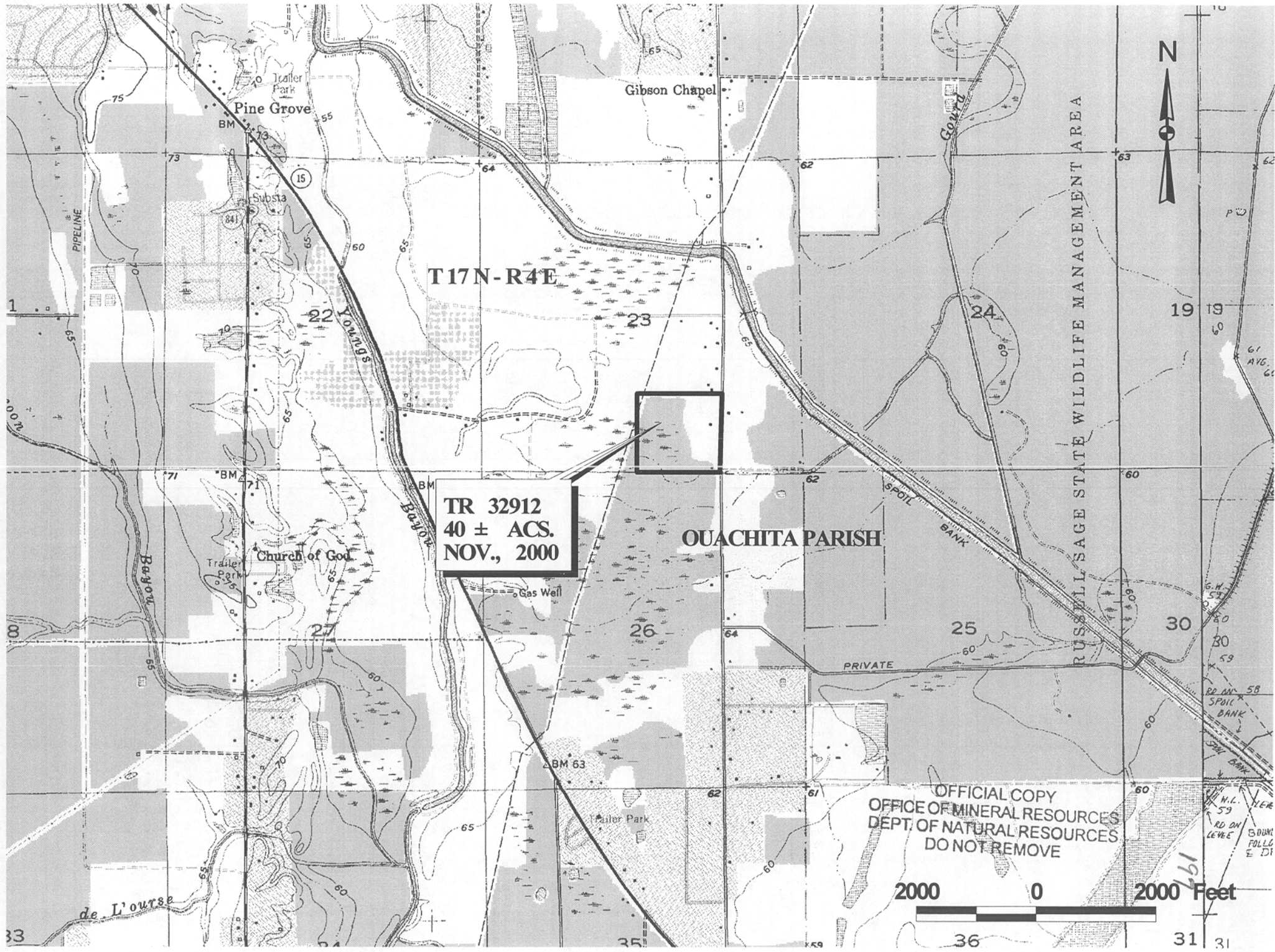
195

TRACT 32912 - STATE AGENCY - Ouachita Parish, Louisiana

A certain tract of land belonging to and not under mineral lease from the Ouachita Parish Police Jury, on November 8, 2000, being more fully described as follows: The Southwest Quarter of the Southeast Quarter, Township 17 North, Range 4 East, Ouachita Parish, Louisiana, excluding beds and bottoms of all navigable waters, containing approximately 40 acres, as shown outlined in red on a plat on file in the Office of Mineral Resources, Department of Natural Resources.

Applicant: Hershel Floyd, Jr. to Agency and by Resolution from the Ouachita Parish Police Jury authorizing the Mineral Board to act in its behalf.

Bidder	Cash Payment	Price / Acre	Rental	Oil	Gas	Other



T17N-R4E

TR 32912
40 ± ACS.
NOV., 2000

OUACHITA PARISH

RUSSELL SAGE STATE WILDLIFE MANAGEMENT AREA

OFFICIAL COPY
OFFICE OF MINERAL RESOURCES
DEPT. OF NATURAL RESOURCES
DO NOT REMOVE

