

TRACT 32863 - PORTION OF BLOCK 37, BRETON SOUND AREA, Plaquemines Parish, Louisiana

That portion of Block 37, Breton Sound Area, Plaquemines Parish, Louisiana, belonging to the State of Louisiana and not under mineral lease on November 8, 2000, described as follows: Beginning at the Southeast corner of Block 37, Breton Sound Area, having Coordinates of X = 2,709,100.00 and Y = 307,580.00; thence West 7,375.00 feet along the South line of said Block 37 to a point having Coordinates of X = 2,701,725.00 and Y = 307,580.00; thence North 5,059.78 feet to a point on the South line of State Lease No. 4409, as amended, having Coordinates of X = 2,701,725.00 and Y = 312,639.78; thence along the boundary of State Lease No. 4409 the following courses: North 73 degrees 47 minutes 09 seconds East 2,973.26 feet to a point having Coordinates of X = 2,704,580.00 and Y = 313,470.00; thence North 4,800.00 feet to a point having Coordinates of X = 2,704,580.00 and Y = 318,270.00; thence West 1,940.00 feet to a point having Coordinates of X = 2,702,640.00 and Y = 318,270.00; thence North 4,060.00 feet to the Northeast corner of said State Lease No. 4409 which lies on the North line of said Block 37 having Coordinates of X = 2,702,640.00 and Y = 322,330.00; thence East 6,460.00 feet along said North line of said Block 37 to its Northeast corner having Coordinates of X = 2,709,100.00 and Y = 322,330.00; thence South 14,750.00 feet along the East line of said Block 37 to the point of beginning, containing approximately **2,070.18 acres**, as shown outlined in red on a plat on file in the Office of Mineral Resources, Department of Natural Resources. All bearings, distances and coordinates are based on Louisiana Coordinate System of 1927 (South Zone).

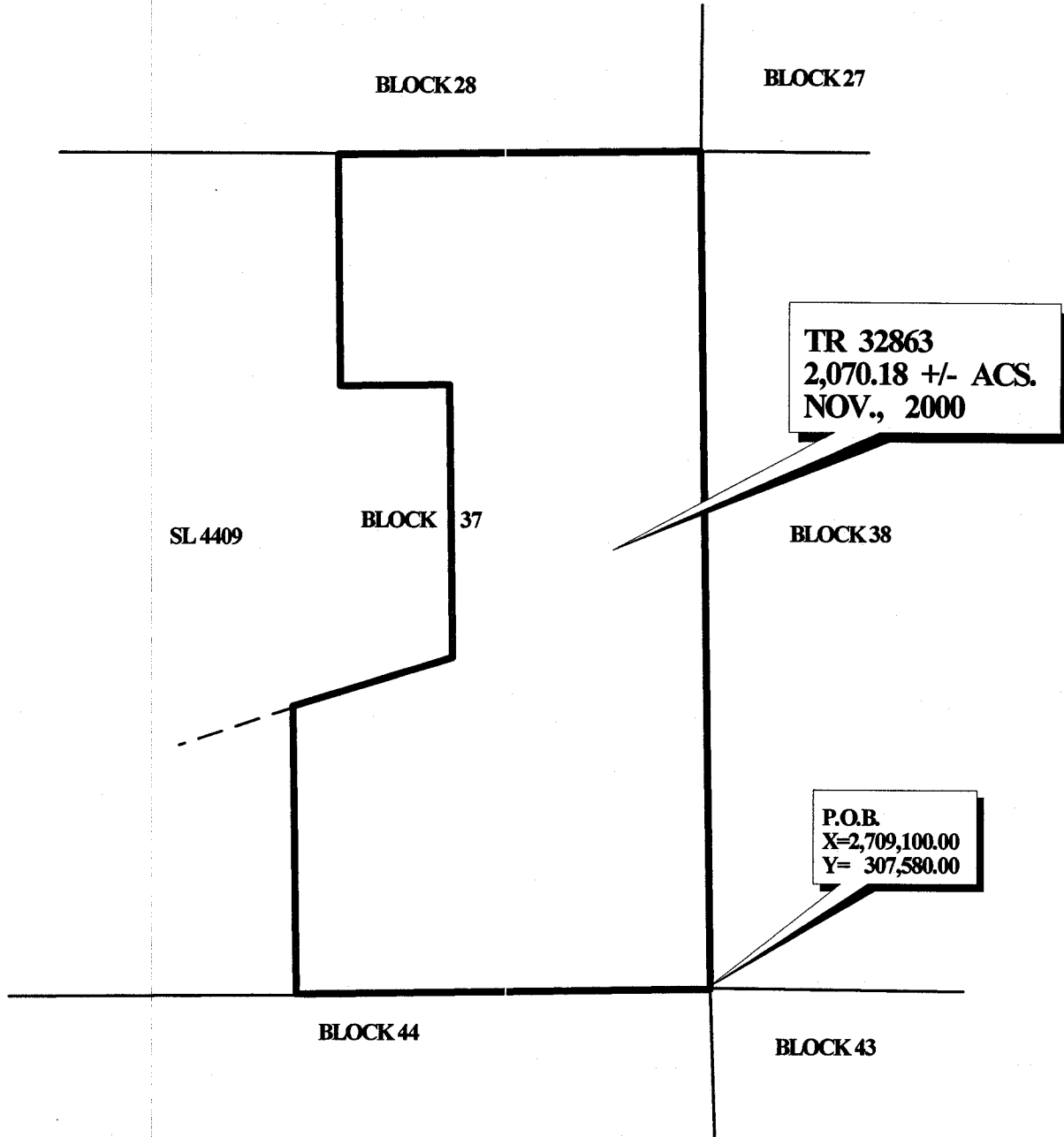
NOTE: It appears, according to our records, that a portion of this tract is located within the restrictive safety fairway area as set out by the Corps of Engineers, U.S. Army.

NOTE: The State of Louisiana does hereby reserve, and this lease shall be subject to, the imprescriptible right of surface use in the nature of a servitude in favor of the Department of Natural Resources, including its Offices and Commissions, for the sole purpose of implementing, constructing, servicing and maintaining approved coastal zone management and/or restoration projects. Utilization of any and all rights derived under this lease by the mineral lessee, its agents, successors or assigns, shall not interfere with nor hinder the reasonable surface use by the Department of Natural Resources, its Offices or Commissions, as hereinabove reserved.

Applicant: Robert A. Schroeder, Inc.

Bidder	Cash Payment	Price / Acre	Rental	Oil	Gas	Other

OFFICIAL COPY
OFFICE OF MINERAL RESOURCES
DEPT. OF NATURAL RESOURCES
DO NOT REMOVE



BRETON SOUND AREA
PLAQUEMINES PARISH



TRACT 32864 - PORTION OF BLOCK 38, BRETON SOUND AREA, Plaquemines Parish, Louisiana

That portion of Block 38, Breton Sound Area, Plaquemines Parish, Louisiana, belonging to the State of Louisiana and not under mineral lease on November 8, 2000, described as follows: Beginning at the Southwest corner of Block 38, Breton Sound Area, having Coordinates of X = 2,709,100.00 and Y = 307,580.00; thence North 14,750.00 feet along the West line of said Block 38 to its Northwest corner having Coordinates of X = 2,709,100.00 and Y = 322,330.00; thence East 7,375.00 feet along the North line of said Block 38 to a point having Coordinates of X = 2,716,475.00 and Y = 322,330.00; thence South 14,750.00 feet to a point on the North line of said Block 38 having Coordinates of X = 2,716,475.00 and Y = 307,580.00; thence West 7,375.00 feet along said South line of said Block 38 to the point of beginning, containing approximately **2,481 acres**, as shown outlined in red on a plat on file in the Office of Mineral Resources, Department of Natural Resources. All bearings, distances and coordinates are based on Louisiana Coordinate System of 1927 (South Zone).

NOTE: The State of Louisiana does hereby reserve, and this lease shall be subject to, the imprescriptible right of surface use in the nature of a servitude in favor of the Department of Natural Resources, including its Offices and Commissions, for the sole purpose of implementing, constructing, servicing and maintaining approved coastal zone management and/or restoration projects. Utilization of any and all rights derived under this lease by the mineral lessee, its agents, successors or assigns, shall not interfere with nor hinder the reasonable surface use by the Department of Natural Resources, its Offices or Commissions, as hereinabove reserved.

Applicant: Robert A. Schroeder, Inc.

Bidder	Cash Payment	Price / Acre	Rental	Oil	Gas	Other

BLOCK 28

BLOCK 37

BLOCK 27

BLOCK 38

BLOCK 44

BLOCK 43

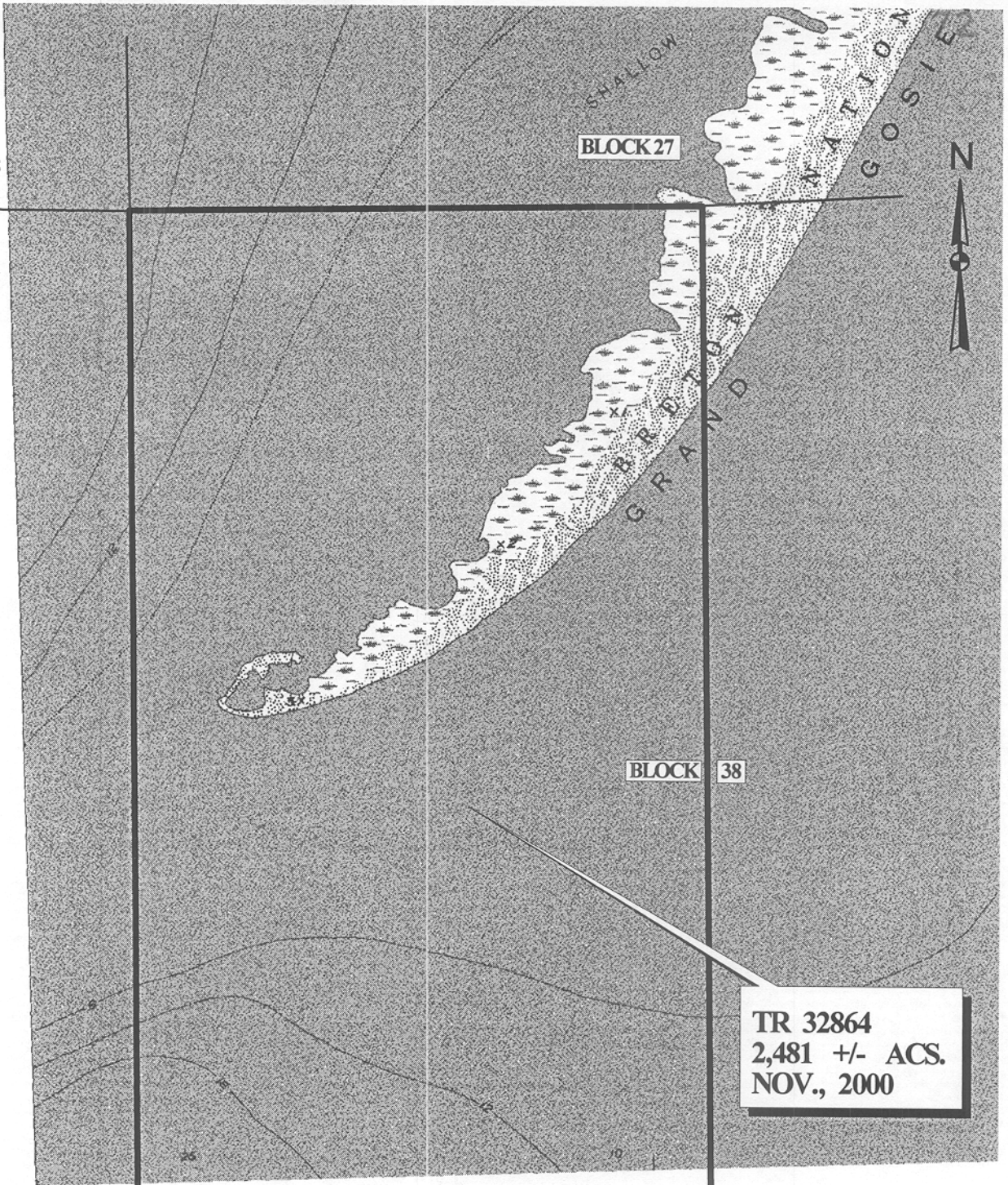
P.O.B.
X=2,709,100.00
Y= 307,580.00

TR 32864
2,481 +/- ACS.
NOV., 2000

BRETON SOUND AREA
PLAQUEMINES PARISH

OFFICIAL COPY
OFFICE OF MINERAL RESOURCES
DEPT. OF NATURAL RESOURCES
DO NOT REMOVE

2000 0 2000 Feet



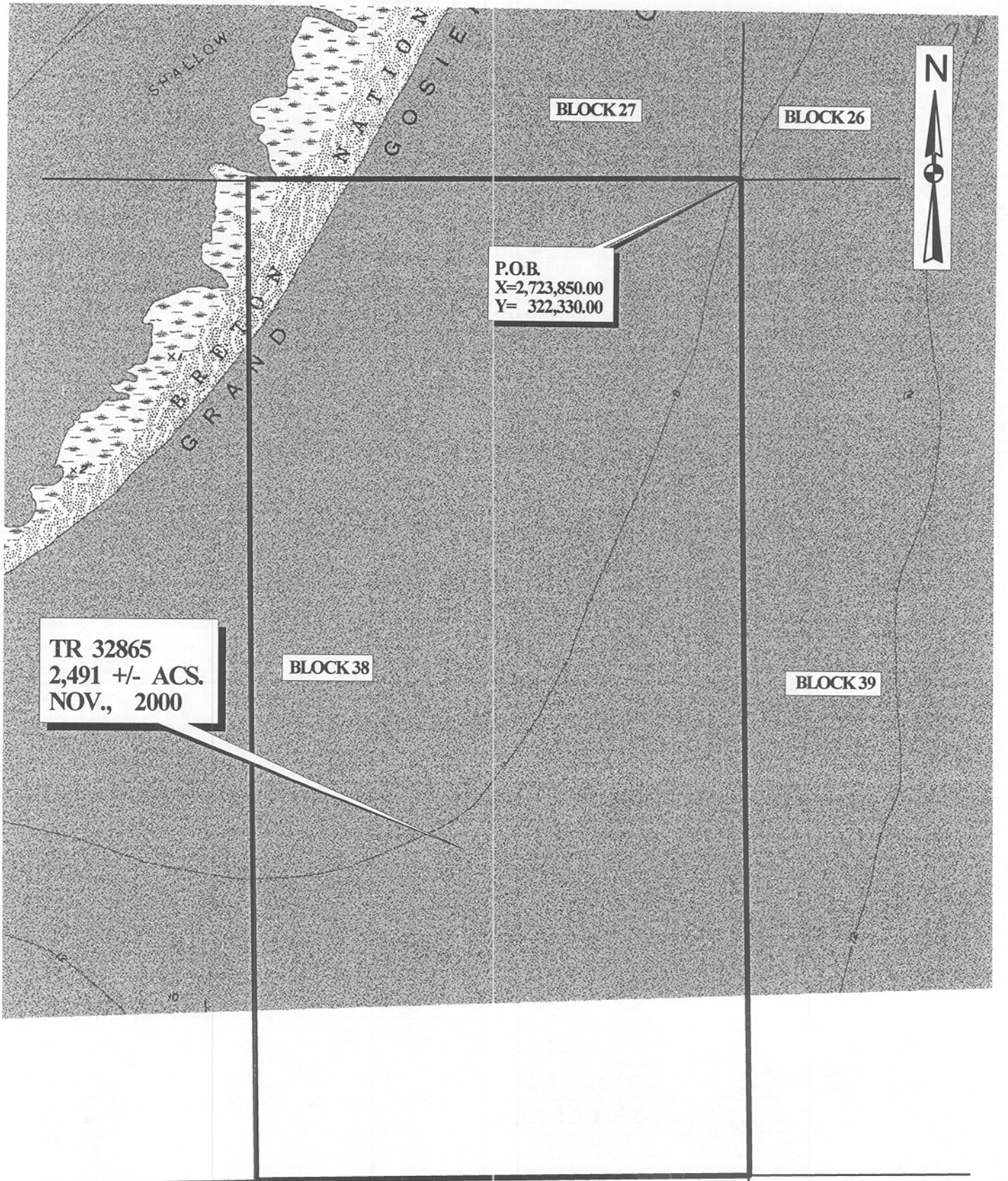
TRACT 32865 - PORTION OF BLOCK 38, BRETON SOUND AREA, Plaquemines Parish, Louisiana

That portion of Block 38, Breton Sound Area, Plaquemines Parish, Louisiana, belonging to the State of Louisiana and not under mineral lease on November 8, 2000, described as follows: Beginning at the Northeast corner of Block 38, Breton Sound Area, having Coordinates of X = 2,723,850.00 and Y = 322,330.00; thence South 14,750.00 feet along the East line of said Block 38 to its Southeast corner having Coordinates of X = 2,723,850.00 and Y = 307,580.00; thence West 7,375.00 feet along the South line of said Block 38 to a point having Coordinates of X = 2,716,475.00 and Y = 307,580.00; thence North 14,750.00 feet to a point on the North line of said Block 38 having Coordinates of X = 2,716,475.00 and Y = 322,330.00; thence East 7,375.00 feet along said North line of said Block 38 to the point of beginning, containing approximately **2,491 acres**, as shown outlined in red on a plat on file in the Office of Mineral Resources, Department of Natural Resources. All bearings, distances and coordinates are based on Louisiana Coordinate System of 1927 (South Zone).

NOTE: The State of Louisiana does hereby reserve, and this lease shall be subject to, the imprescriptible right of surface use in the nature of a servitude in favor of the Department of Natural Resources, including its Offices and Commissions, for the sole purpose of implementing, constructing, servicing and maintaining approved coastal zone management and/or restoration projects. Utilization of any and all rights derived under this lease by the mineral lessee, its agents, successors or assigns, shall not interfere with nor hinder the reasonable surface use by the Department of Natural Resources, its Offices or Commissions, as hereinabove reserved.

Applicant: Robert A. Schroeder, Inc.

Bidder	Cash Payment	Price / Acre	Rental	Oil	Gas	Other



TR 32865
2,491 +/- ACS.
NOV., 2000

BLOCK 38

BLOCK 27

BLOCK 26

P.O.B.
X=2,723,850.00
Y= 322,330.00

BLOCK 39

BLOCK 43

BLOCK 42

BRETON SOUND AREA
PLAQUEMINES PARISH

OFFICIAL COPY
OFFICE OF MINERAL RESOURCES
DEPT. OF NATURAL RESOURCES
DO NOT REMOVE

2000 0 2000 Feet