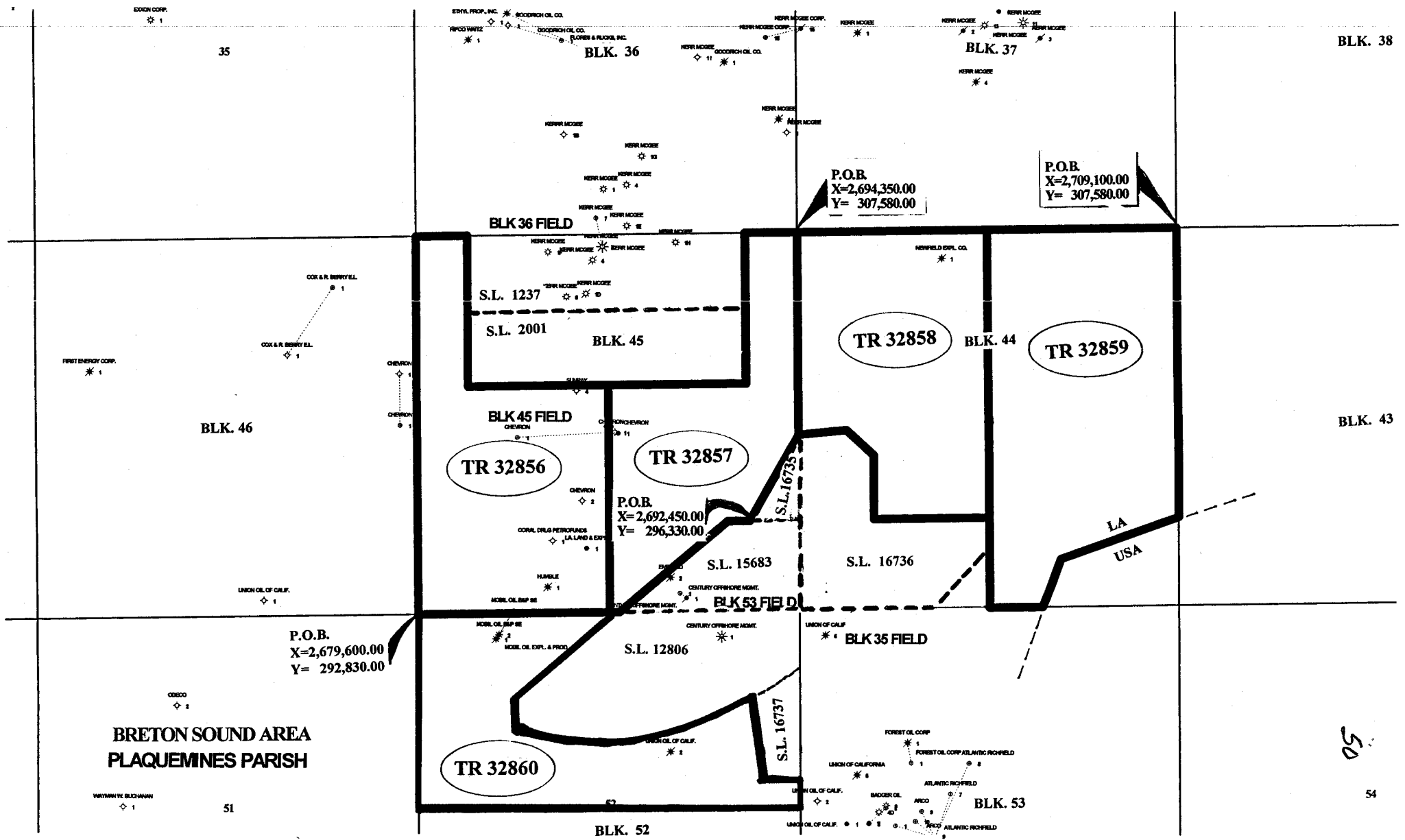


**NOT TO BE USED WITH A PORTION BID
FOR INFORMATIONAL PURPOSES ONLY!**

MAP NOT TO SCALE



BLK. 38

35

BLK. 36

BLK. 37

BLK 36 FIELD

S.L. 1237

S.L. 2001

BLK. 45

TR 32858

BLK. 44

TR 32859

BLK. 46

TR 32856

TR 32857

P.O.B.
X=2,692,450.00
Y=296,330.00

S.L. 15683

S.L. 16736

LA
USA

BLK. 43

P.O.B.
X=2,679,600.00
Y=292,830.00

BLK 53 FIELD

S.L. 12806

BLK 35 FIELD

BRETON SOUND AREA
PLAQUEMINES PARISH

TR 32860

S.L. 16737

BLK. 53

BLK. 52

50

54

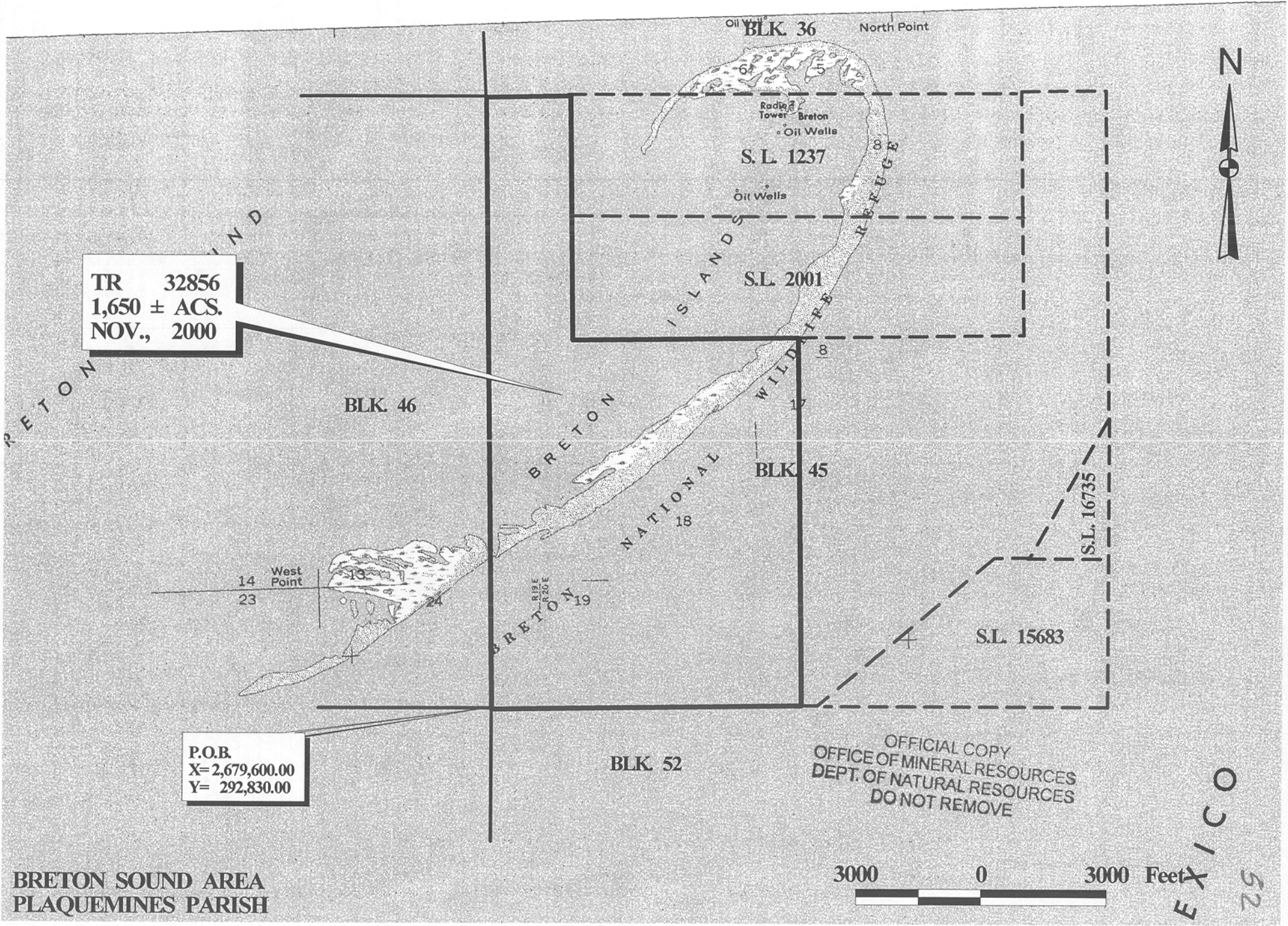
TRACT 32856 - PORTION OF BLOCK 45, BRETON SOUND AREA, Plaquemines Parish, Louisiana

That portion of Block 45, Breton Sound Area, Plaquemines Parish, Louisiana, belonging to the State of Louisiana and not under mineral lease on November 8, 2000, described as follows: Beginning at the Southwest corner of Block 45, Breton Sound Area, having Coordinates of X = 2,679,600.00 and Y = 292,830.00; thence North 14,750.00 feet on the West line of said Block 45 to its Northwest corner having Coordinates of X = 2,679,600.00 and Y = 307,580.00; thence East 2,000.00 feet on the North line of said Block 45 to the Northwest corner of State Lease No. 1237, as amended, having Coordinates of X = 2,681,600.00 and Y = 307,580.00; thence South 2,950.00 feet on the West line of said State Lease No. 1237 to its Southwest corner, also being the Northwest corner of State Lease No. 2001, as amended, having Coordinates of X = 2,681,600.00 and Y = 304,630.00; thence South 2,925.00 feet on the West line of said State Lease No. 2001 to its Southwest corner having Coordinates of X = 2,681,600.00 and Y = 301,705.00; thence East 5,375.00 feet on the South line of said State Lease No. 2001 to a point having Coordinates of X = 2,686,975.00 and Y = 301,705.00; thence South 8,875.00 feet to a point on the South line of said Block 45 having Coordinates of X = 2,686,975.00 and Y = 292,830.00; thence West 7,375.00 feet on the South line of said Block 45 to the point of beginning, containing approximately 1,650 acres, as shown outlined in red on a plat on file in the Office of Mineral Resources, Department of Natural Resources. All bearings, distances and coordinates are based on Louisiana Coordinate System of 1927 (South Zone).

NOTE: The State of Louisiana does hereby reserve, and this lease shall be subject to, the imprescriptible right of surface use in the nature of a servitude in favor of the Department of Natural Resources, including its Offices and Commissions, for the sole purpose of implementing, constructing, servicing and maintaining approved coastal zone management and/or restoration projects. Utilization of any and all rights derived under this lease by the mineral lessee, its agents, successors or assigns, shall not interfere with nor hinder the reasonable surface use by the Department of Natural Resources, its Offices or Commissions, as hereinabove reserved.

Applicant: Robert A. Schroeder, Inc.

Bidder	Cash Payment	Price / Acre	Rental	Oil	Gas	Other



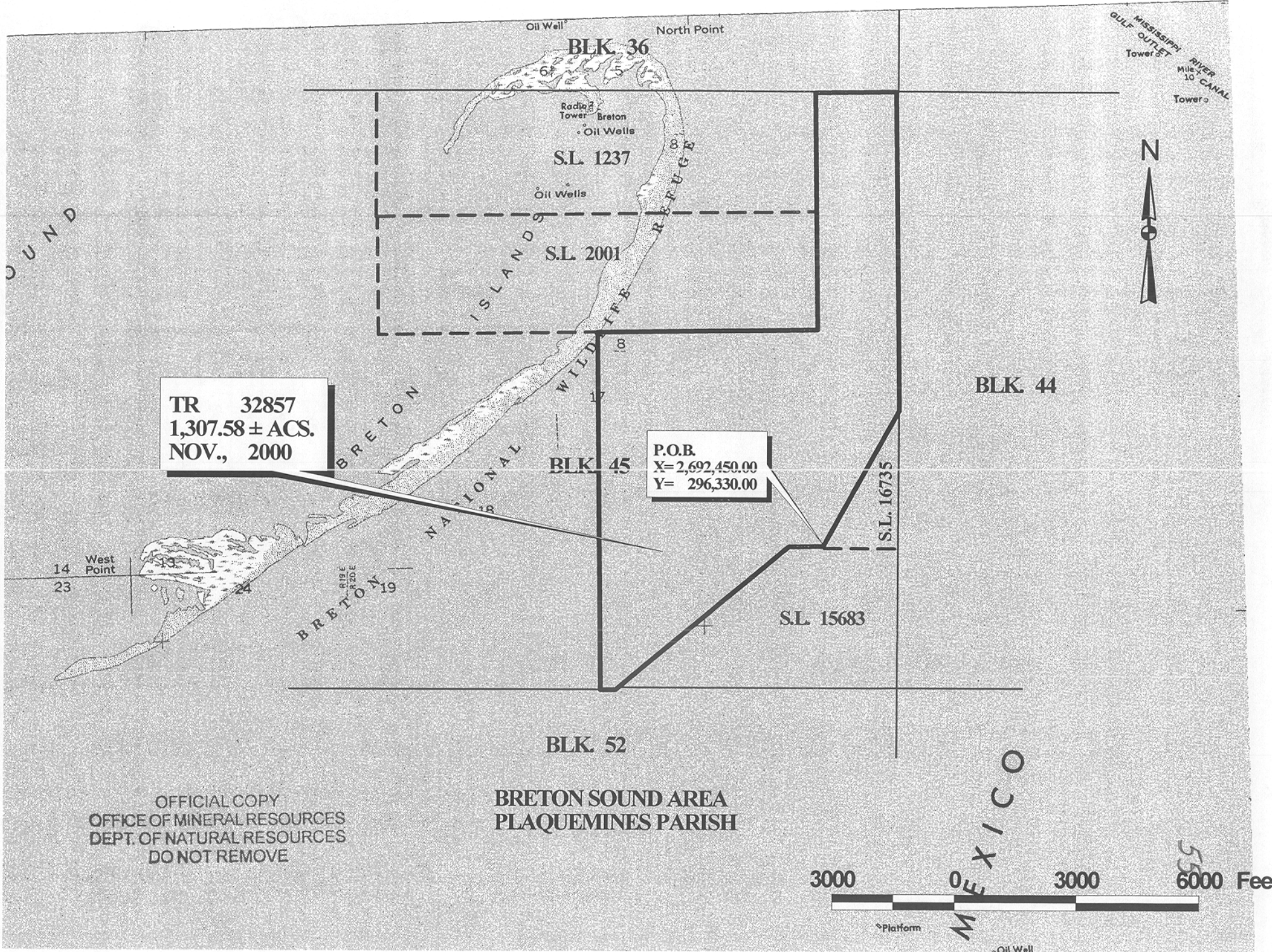
TRACT 32857 - PORTION OF BLOCK 45, BRETON SOUND AREA, Plaquemines Parish, Louisiana

That portion of Block 45, Breton Sound Area, Plaquemines Parish, Louisiana, belonging to the State of Louisiana and not under mineral lease on November 8, 2000, described as follows: Beginning at the Southwest corner of State Lease NO. 16735 which lies inside Block 45, Breton Sound Area, on the North line of State Lease No. 15683 having Coordinates of X = 2,692,450.00 and Y = 296,330.00; thence West 850.00 feet on said North line of said State Lease No. 15683 to its Northwest corner having Coordinates of X = 2,691,600.00 and Y = 296,330.00; thence South 50 degrees 31 minutes 39 seconds West 5,505.68 feet on the Northwest line of said State Lease No. 15683 to its Southwest corner located on the South line of said Block 45 having Coordinates of X = 2,687,350.00 and Y = 292,830.00; thence West 375.00 feet on the South line of said Block 45 to a point having Coordinates of X = 2,686,975.00 and Y = 292,830.00; thence North 8,875.00 feet to a point on the South line of State Lease No. 2001, as amended, having Coordinates of X = 2,686,975.00 and Y = 301,705.00; thence East 5,375.00 feet on the South line of said State Lease No. 2001 to its Southwest corner having Coordinates of X = 2,692,350.00 and Y = 301,705.00; thence North 2,925.00 feet on the East line of said State Lease No. 2001 to its Northeast corner, also being the Southeast corner of State Lease No. 1237, as amended, having Coordinates of X = 2,692,350.00 and Y = 304,630.00; thence North 2,950.00 feet on the East line of said State Lease No. 1237 to its Northeast corner located on the North line of said Block 45 having Coordinates of X = 2,692,350.00 and Y = 307,580.00 feet; thence East 2,000.00 feet on the North line of said Block 45 to its Northeast corner having Coordinates of X = 2,694,350.00 and Y = 307,580.00; thence South 7,900.00 feet on the East line of said Block 45 to the North corner of said State Lease No. 16735 having Coordinates of X = 2,694,350.00 and Y = 299,680.00; thence South 29 degrees 33 minutes 37 seconds West 3,851.30 feet along the West line of said State Lease No. 16735 to the point of beginning, containing approximately 1,307.58 acres, as shown outlined in red on a plat on file in the Office of Mineral Resources, Department of Natural Resources. All bearings, distances and coordinates are based on Louisiana Coordinate System of 1927 (South Zone).

NOTE: The State of Louisiana does hereby reserve, and this lease shall be subject to, the imprescriptible right of surface use in the nature of a servitude in favor of the Department of Natural Resources, including its Offices and Commissions, for the sole purpose of implementing, constructing, servicing and maintaining approved coastal zone management and/or restoration projects. Utilization of any and all rights derived under this lease by the mineral lessee, its agents, successors or assigns, shall not interfere with nor hinder the reasonable surface use by the Department of Natural Resources, its Offices or Commissions, as hereinabove reserved.

Applicant: Robert A. Schroeder, Inc.

Bidder	Cash Payment	Price / Acre	Rental	Oil	Gas	Other



TR 32857
1,307.58 ± ACS.
NOV., 2000

P.O.B.
X= 2,692,450.00
Y= 296,330.00

OFFICIAL COPY
 OFFICE OF MINERAL RESOURCES
 DEPT. OF NATURAL RESOURCES
 DO NOT REMOVE

BRETON SOUND AREA
PLAQUEMINES PARISH

