

P.O.B.  
X=2,615,928.00  
Y= 82,150.00

TR 32845  
2,120.02 +/- ACS.  
NOV., 2000

OFFICIAL COPY  
OFFICE OF MINERAL RESOURCES  
DEPT. OF NATURAL RESOURCES  
DO NOT REMOVE

BLOCK 41

BLOCK 43

BLOCK 58

BLOCK 57

BLOCK 56

SL 12967

BLOCK 42

LA  
USA

SOUTH PASS AREA  
PLAQUEMINES PARISH



**TRACT 32846 - PORTION OF BLOCK 43, SOUTH PASS AREA, Plaquemines Parish,  
Louisiana**

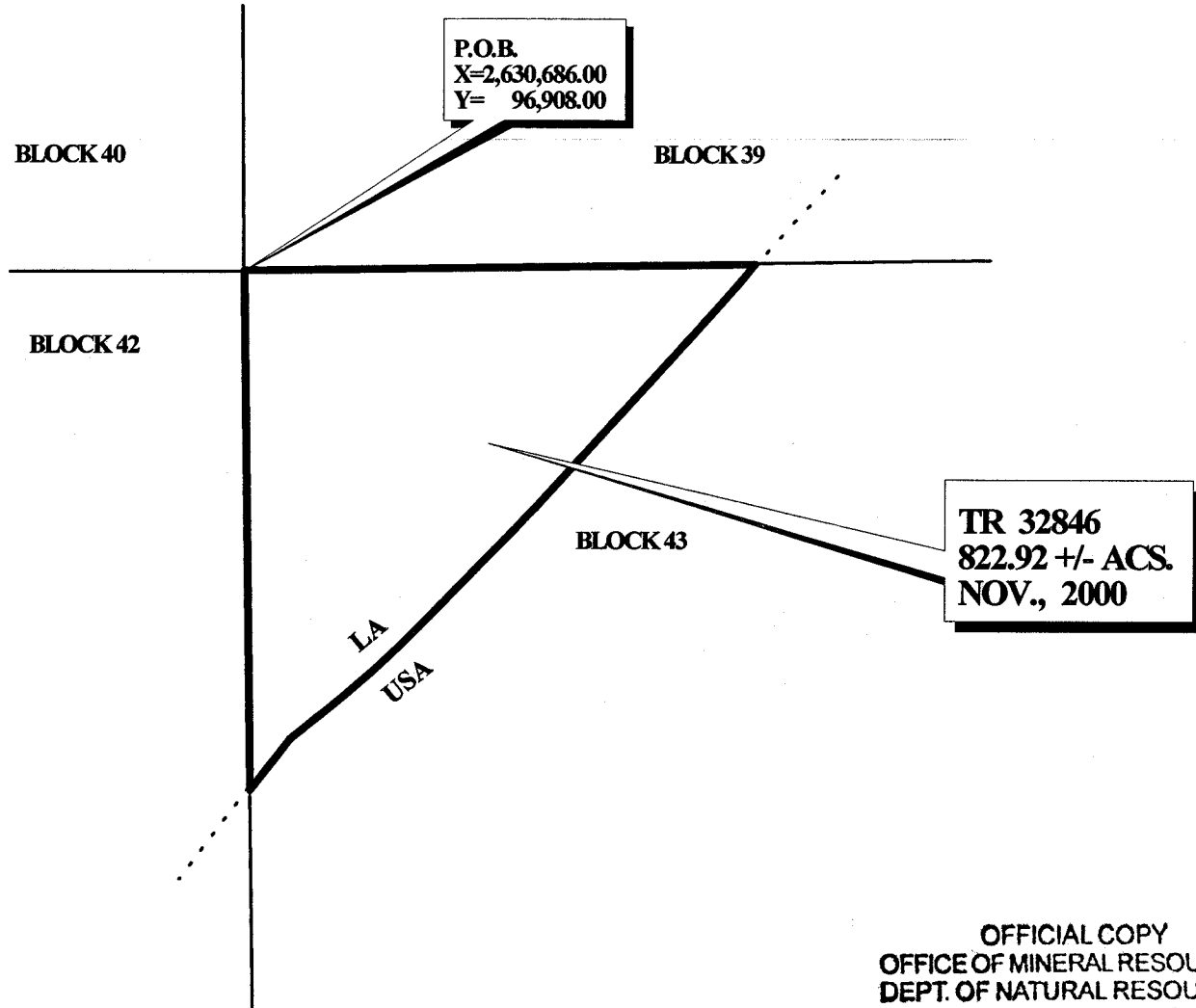
That portion of Block 43, South Pass Area, Plaquemines Parish, Louisiana, belonging to the State of Louisiana and not under mineral lease on November 8, 2000, described as follows: Beginning at the Northwest corner of Block 43, South Pass Area, having Coordinates of X = 2,630,686.00 and Y = 96,908.00; thence East 8,225.00 feet on the North line of said Block 43 to a point having Coordinates of X = 2,638,911.00 and Y = 96,908.00; thence Southwesterly on an arc having a radius of 18,240.60 feet and a center at X = 2,624,995 and Y = 108,700 to a point having Coordinates of X = 2,638,408 and Y = 96,339; thence Southwesterly on a straight line to a point having Coordinates of X = 2,638,408 and Y = 96,339; thence Southwesterly on a straight line to a point having Coordinates of X = 2,638,210 and Y = 96,123; thence Southwesterly on a straight line to a point having Coordinates of X = 2,637,530 and Y = 95,377; thence Southwesterly on an arc having a radius of 18,240.60 feet and a center at X = 2,624,045 and Y = 107,660 to a point having Coordinates of X = 2,637,471 and Y = 95,312; thence Southwesterly on a straight line to a point having Coordinates of X = 2,635,351 and Y = 93,007; thence Southwesterly on an arc having a radius of 18,240.60 feet and a center at X = 2,621,925 and Y = 105,355 to a point having Coordinates of X = 2,634,923 and Y = 92,558; thence Southwesterly on a straight line to a point having Coordinates of X = 2,633,653 and Y = 91,268; thence Southwesterly on an arc having a radius of 18,240.60 feet and a center at X = 2,620,655 and Y = 104,065 to a point having Coordinates of X = 2,631,973 and Y = 89,760; thence Southwesterly on a straight line to a point having Coordinates of X = 2,631,344 and Y = 89,262; thence Southwesterly on a straight line to the intersection with the West line of said Block 43 having Coordinates of X = 2,630,686.00 and Y = 88,435.62; thence North 8,472.38 feet on said West line of said Block 43 to the point of beginning, containing approximately **822.92 acres**, as shown outlined in red on a plat on file in the Office of Mineral Resources, Department of Natural Resources, **LESS AND EXCEPT** that portion thereof, if any, which is more than three nautical miles from the coast line as determined by the Report of the Special Master in the litigation in the Supreme Court of the United States styled United States v. State of Louisiana et al No. 9 Original, said three mile line as set out in the June, 1975, decree of the Supreme Court. All bearings, distances and coordinates are based on Louisiana Coordinate System of 1927 (South Zone).

NOTE: It appears, according to our records, that a portion of this tract is located within the restrictive anchorage area as set out by the U. S. Coast Guard.

NOTE: The State of Louisiana does hereby reserve, and this lease shall be subject to, the imprescriptible right of surface use in the nature of a servitude in favor of the Department of Natural Resources, including its Offices and Commissions, for the sole purpose of implementing, constructing, servicing and maintaining approved coastal zone management and/or restoration projects. Utilization of any and all rights derived under this lease by the mineral lessee, its agents, successors or assigns, shall not interfere with nor hinder the reasonable surface use by the Department of Natural Resources, its Offices or Commissions, as hereinabove reserved.

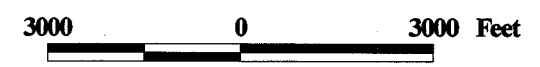
Applicant: Acadian Land Services, Inc.

Bidder	Cash Payment	Price / Acre	Rental	Oil	Gas	Other



OFFICIAL COPY  
OFFICE OF MINERAL RESOURCES  
DEPT. OF NATURAL RESOURCES  
DO NOT REMOVE

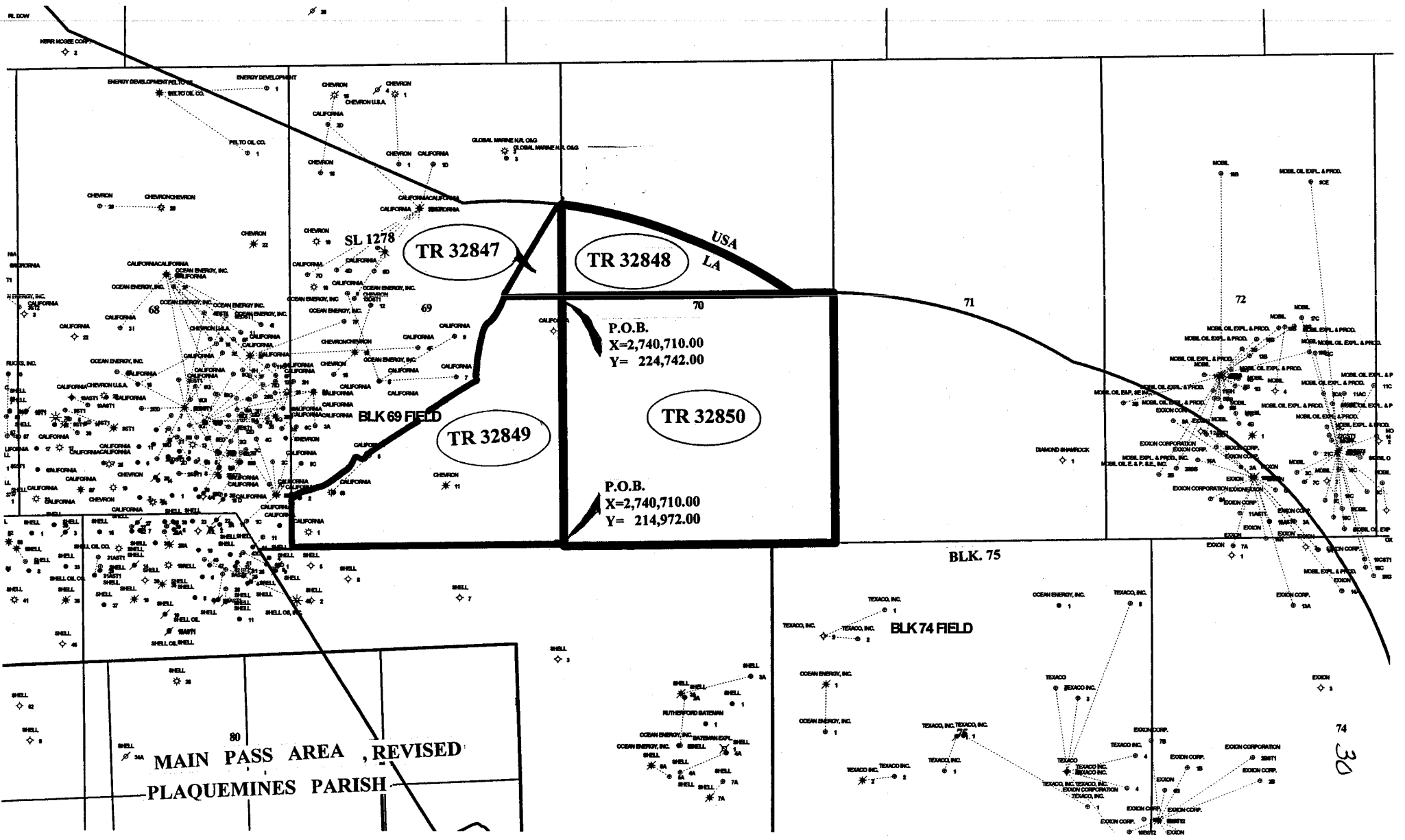
SOUTH PASS AREA  
PLAQUEMINES PARISH



NOT TO BE USED WITH A PORTION BID  
FOR INFORMATIONAL PURPOSES ONLY!

F & A Map Services  
Division of PI

MAP NOT TO SCALE



TR 32847

TR 32848

TR 32849

TR 32850

P.O.B.  
X=2,740,710.00  
Y= 224,742.00

P.O.B.  
X=2,740,710.00  
Y= 214,972.00

MAIN PASS AREA, REVISED  
PLAQUEMINES PARISH

BLK 74 FIELD

BLK. 75

74  
30

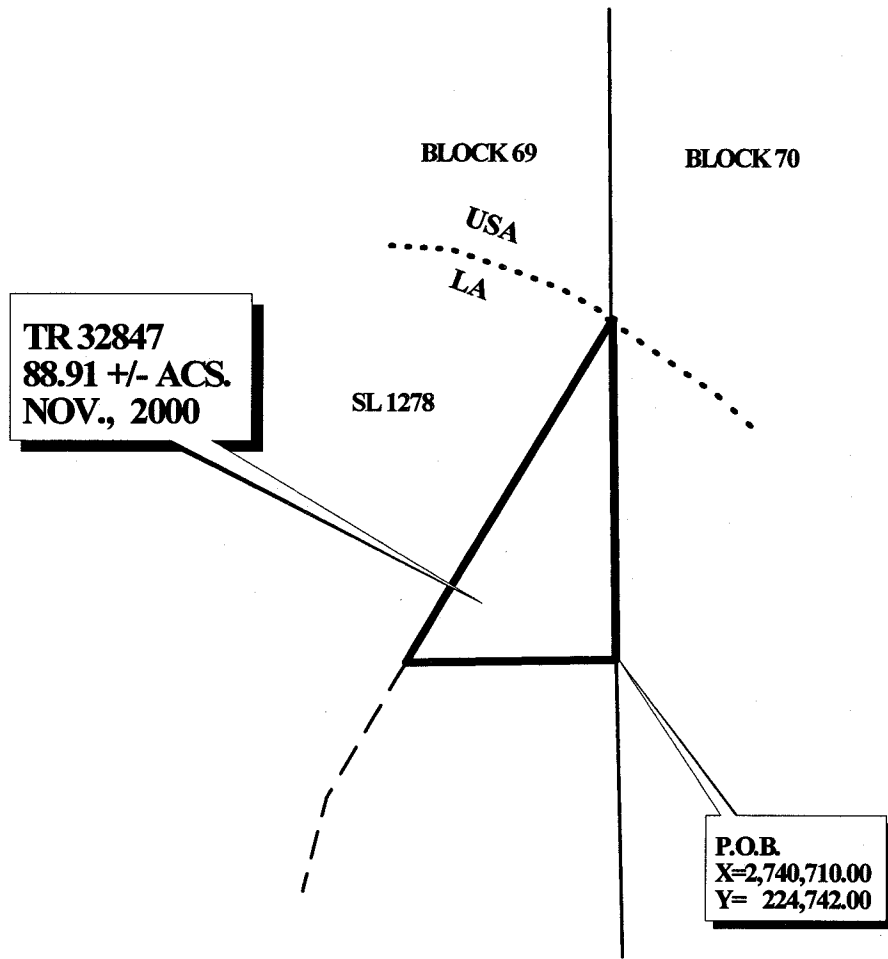
**TRACT 32847 - PORTION OF BLOCK 69, MAIN PASS AREA, REVISED, Plaquemines Parish, Louisiana**

That portion of Block 69, Main Pass Area, Revised, Plaquemines Parish, Louisiana, belonging to the State of Louisiana and not under mineral lease on November 8, 2000, described as follows: Beginning at a point on the East line of Block 69, Main Pass Area, Revised, having Coordinates of X = 2,740,710.00 and Y = 224,742.00; thence West approximately 2,169 feet to a point on the Southeasterly boundary of State Lease No. 1278, as amended, having a Coordinate of Y = 224,742.00; thence North 31 degrees 16 minutes 17 seconds East 4,178.39 feet to the Northeast corner of said Block 69 having Coordinates of X = 2,740,710.00 and Y = 228,313.35; thence South 3,571.35 feet along the East line of said Block 69 to the point of beginning, containing approximately **88.91 acres**, as shown outlined in red on a plat on file in the Office of Mineral Resources, Department of Natural Resources, **LESS AND EXCEPT** that portion thereof, if any, which is more than three nautical miles from the coast line as determined by the Report of the Special Master in the litigation in the Supreme Court of the United States styled United States v. State of Louisiana et al No. 9 Original, said three mile line as set out in the June, 1975, decree of the Supreme Court. All bearings, distances and coordinates are based on Louisiana Coordinate System of 1927 (South Zone).

NOTE: The State of Louisiana does hereby reserve, and this lease shall be subject to, the imprescriptible right of surface use in the nature of a servitude in favor of the Department of Natural Resources, including its Offices and Commissions, for the sole purpose of implementing, constructing, servicing and maintaining approved coastal zone management and/or restoration projects. Utilization of any and all rights derived under this lease by the mineral lessee, its agents, successors or assigns, shall not interfere with nor hinder the reasonable surface use by the Department of Natural Resources, its Offices or Commissions, as hereinabove reserved.

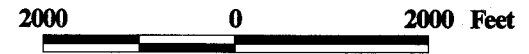
Applicant: Cypress Energy Corporation

Bidder	Cash Payment	Price / Acre	Rental	Oil	Gas	Other



OFFICIAL COPY  
OFFICE OF MINERAL RESOURCES  
DEPT. OF NATURAL RESOURCES  
DO NOT REMOVE

MAIN PASS AREA, REVISED  
PLAQUEMINES PARISH



32

**TRACT 32848 - PORTION OF BLOCK 70, MAIN PASS AREA, REVISED, Plaquemines Parish, Louisiana**

That portion of Block 70, Main Pass Area, Revised, Plaquemines Parish, Louisiana, belonging to the State of Louisiana and not under mineral lease on November 8, 2000, described as follows: Beginning at a point on the West line of Block 70, Main Pass Area, Revised, having Coordinates of X = 2,740,710.00 and Y = 224,742.00; thence North 3,571.35 feet to a point on the Three Mile Line set out in the June, 1975, decree of the Supreme Court having Coordinates of x = 2,740,710.00 and Y = 228,313.35; thence Southeasterly along an arc having a radius of 18,240.60 feet and a center at X = 2,738,320 and Y = 210,230; thence Southeasterly along an arc having a radius of 18,240.60 and a center at X = 2,738,938 and Y = 209,975; thence West 8,936.00 feet to the point of beginning, containing approximately **451.54 acres**, as shown outlined in red on a plat on file in the Office of Mineral Resources, Department of Natural Resources. All bearings, distances and coordinates are based on Louisiana Coordinate System of 1927 (South Zone).

NOTE: The State of Louisiana does hereby reserve, and this lease shall be subject to, the imprescriptible right of surface use in the nature of a servitude in favor of the Department of Natural Resources, including its Offices and Commissions, for the sole purpose of implementing, constructing, servicing and maintaining approved coastal zone management and/or restoration projects. Utilization of any and all rights derived under this lease by the mineral lessee, its agents, successors or assigns, shall not interfere with nor hinder the reasonable surface use by the Department of Natural Resources, its Offices or Commissions, as hereinabove reserved.

Applicant: Cypress Energy Corporation

Bidder	Cash Payment	Price / Acre	Rental	Oil	Gas	Other





BLOCK 69

BLOCK 70

USA

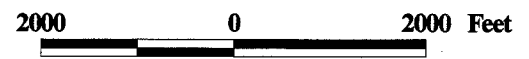
LA

TR 32848  
451.54 +/- ACS.  
NOV., 2000

P.O.B.  
X=2,740,710.00  
Y= 224,742.00

OFFICIAL COPY  
OFFICE OF MINERAL RESOURCES  
DEPT. OF NATURAL RESOURCES  
DO NOT REMOVE

MAIN PASS AREA, REVISED  
PLAQUEMINES PARISH



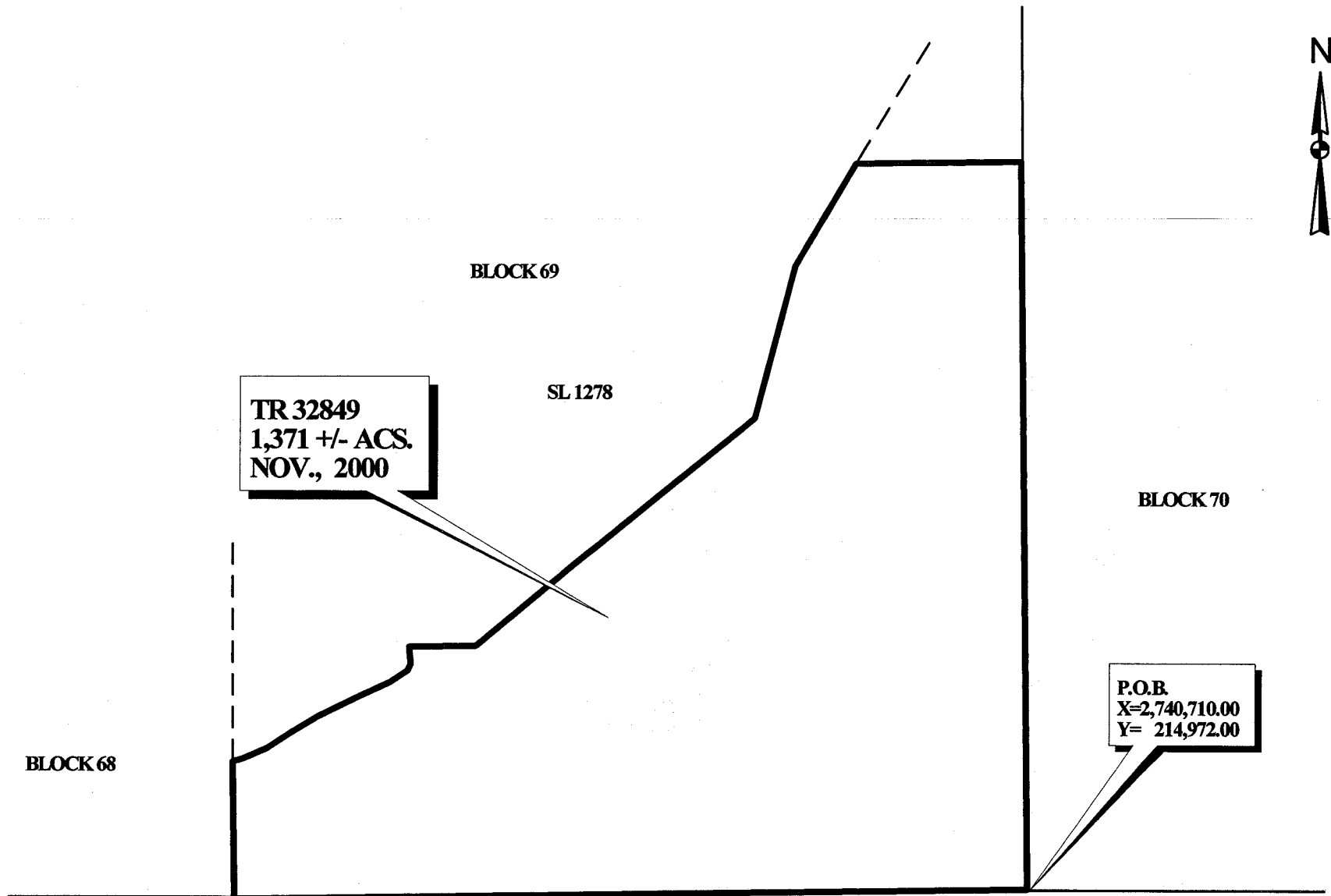
**TRACT 32849 - PORTION OF BLOCK 69, MAIN PASS AREA, REVISED, Plaquemines Parish, Louisiana**

That portion of Block 69, Main Pass Area, Revised, Plaquemines Parish, Louisiana, belonging to the State of Louisiana and not under mineral lease on November 8, 2000, described as follows: Beginning at the Southeast corner of Block 69, Main Pass Area, Revised, having Coordinates of X = 2,740,710.00 and Y = 214,972.00; thence West 10,535.00 feet along the South line of said Block 69 to its Southwest corner having Coordinates of X = 2,730,175.00 and Y = 214,972.00; thence North 1,843.00 feet along the West line of said Block 69 to the Southwest corner of State Lease No. 1278, as amended, having Coordinates of X = 2,730,175.00 and Y = 216,815.00; thence along the Southeasterly boundary of said State Lease No. 1278 the following courses and distances: North 75 degrees 04 minutes 07 seconds East 155.24 feet, North 66 degrees 34 minutes 17 seconds East 326.96 feet, North 57 degrees 38 minutes 00 seconds East 420.30 feet, North 59 degrees 18 minutes 01 seconds East 372.16 feet, North 64 degrees 08 minutes 53 seconds East 538.93 feet, North 65 degrees 22 minutes 35 seconds East 528.02 feet, North 56 degrees 53 minutes 19 seconds East 274.59 feet, North 25 degrees 12 minutes 04 seconds East 93.94 feet, North 03 degrees 39 minutes 08 seconds West 235.48 feet, East 890.55 feet, North 51 degrees 07 minutes 12 seconds East 4,809.68 feet, North 15 degrees 18 minutes 46 seconds East 2,102.65 feet, West 1.00 feet and Northeasterly approximately 1,603 feet to a point having a Coordinate of Y = 224,742.00; thence West approximately 2,169 feet to a point on the East line of said Block 69 having Coordinates of X = 2,740,710.00 and Y = 224,742.00; thence South 9,770.00 feet along the East line of said Block 69 to the point of beginning, containing approximately **1,371 acres**, as shown outlined in red on a plat on file in the Office of Mineral Resources, Department of Natural Resources. All bearings, distances and coordinates are based on Louisiana Coordinate System of 1927 (South Zone).

NOTE: The State of Louisiana does hereby reserve, and this lease shall be subject to, the imprescriptible right of surface use in the nature of a servitude in favor of the Department of Natural Resources, including its Offices and Commissions, for the sole purpose of implementing, constructing, servicing and maintaining approved coastal zone management and/or restoration projects. Utilization of any and all rights derived under this lease by the mineral lessee, its agents, successors or assigns, shall not interfere with nor hinder the reasonable surface use by the Department of Natural Resources, its Offices or Commissions, as hereinabove reserved.

Applicant: Cypress Energy Corporation

Bidder	Cash Payment	Price / Acre	Rental	Oil	Gas	Other



**TR 32849**  
**1,371 +/- ACS.**  
**NOV., 2000**

SL 1278

**P.O.B.**  
**X=2,740,710.00**  
**Y= 214,972.00**

**MAIN PASS AREA, REVISED**  
**PLAQUEMINES PARISH**

OFFICIAL COPY  
OFFICE OF MINERAL RESOURCES  
DEPT. OF NATURAL RESOURCES  
DO NOT REMOVE

2000 0 2000 Feet

**TRACT 32850 - PORTION OF BLOCK 70, MAIN PASS AREA, REVISED, Plaquemines Parish, Louisiana**

That portion of Block 70, Main Pass Area, Revised, Plaquemines Parish, Louisiana, belonging to the State of Louisiana and not under mineral lease on November 8, 2000, described as follows: Beginning at the Southwest corner of Block 70, Main Pass Area, Revised, having Coordinates of X = 2,740,710.00 and Y = 214,972.00; thence North 9,770.00 feet on the West line of said Block 70 to a point having Coordinates of X = 2,740,710.00 and Y = 224,742.00; thence East 8,936.00 feet to a point having Coordinates of X = 2,749,646 and Y = 224,742; thence Easterly on an arc having a radius of 18,240.60 feet and a center at X = 2,750,755 and Y = 206,535 to a point on the East line of said Block 70 having Coordinates of X = 2,751,245.00 and Y = 224,769.02; thence South 9,797.02 feet along the East line of said Block 70 to its Southeast corner having Coordinates of X = 2,751,245.00 and Y = 214,972.00; thence West 10,535.00 feet to the point of beginning, containing approximately **2,363.81 acres**, as shown outlined in red on a plat on file in the Office of Mineral Resources, Department of Natural Resources. All bearings, distances and coordinates are based on Louisiana Coordinate System of 1927 (South Zone).

NOTE: The State of Louisiana does hereby reserve, and this lease shall be subject to, the imprescriptible right of surface use in the nature of a servitude in favor of the Department of Natural Resources, including its Offices and Commissions, for the sole purpose of implementing, constructing, servicing and maintaining approved coastal zone management and/or restoration projects. Utilization of any and all rights derived under this lease by the mineral lessee, its agents, successors or assigns, shall not interfere with nor hinder the reasonable surface use by the Department of Natural Resources, its Offices or Commissions, as hereinabove reserved.

Applicant: Cypress Energy Corporation

Bidder	Cash Payment	Price / Acre	Rental	Oil	Gas	Other



USA  
LA

BLOCK 69

BLOCK 70

TR 32850  
2,363.81 +/- ACS.  
NOV., 2000

P.O.B.  
X=2,740,710.00  
Y= 214,972.00

MAIN PASS AREA, REVISED

SOUTH PASS AREA

BLOCK 1

PLAQUEMINES PARISH

OFFICIAL COPY  
OFFICE OF MINERAL RESOURCES  
DEPT. OF NATURAL RESOURCES  
DO NOT REMOVE

2000 0 2000 Feet

38